

ANALYTIC PERSPECTIVE

Open Access

Effect of an armed conflict on relative socioeconomic position of rural households: case study from western Côte d'Ivoire

Thomas Fürst^{1,2*†}, Andres B Tschannen^{3†}, Giovanna Raso^{1,2,3,4,5}, Cinthia A Acka⁶, Don de Savigny^{1,2}, Olivier Girardin⁷, Eliézer K N'Goran^{3,8}, Jürg Utzinger^{1,2}

Abstract

Background: Current conceptual frameworks on the interrelationship between armed conflict and poverty are based primarily on aggregated macro-level data and/or qualitative evidence and usually focus on adherents of warring factions. In contrast, there is a paucity of quantitative studies about the socioeconomic consequences of armed conflict at the micro-level, i.e., noncommitted local households and civilians.

Methods: We conducted a secondary analysis of data pertaining to risk factors for malaria and neglected tropical diseases. Standardized questionnaires were administered to 182 households in a rural part of western Côte d'Ivoire in August 2002 and again in early 2004. Between the two surveys, the area was subject to intensive fighting in the Ivorian civil war. Principal component analysis was applied at the two time points for constructing an asset-based wealth-index and categorizing the households in wealth quintiles. Based on quintile changes, the households were labeled as 'worse-off', 'even' or 'better-off'. Statistical analysis tested for significant associations between the socioeconomic fates of households and head of household characteristics, household composition, village characteristics and self-reported events associated with the armed conflict. Most-poor/least-poor ratios and concentration indices were calculated to assess equity changes in households' asset possession.

Results: Of 203 households initially included in the first survey, 21 were lost to follow-up. The population in the remaining 182 households shrunk from 1,749 to 1,625 persons due to migration and natural population changes. However, only weak socioeconomic dynamics were observed; every seventh household was defined as 'worse-off' or 'better-off' despite the war-time circumstances. Analysis of other reported demographic and economic characteristics did not clearly identify more or less resilient households, and only subtle equity shifts were noted. However, the results indicate significant changes in livelihood strategies with a significant return to agricultural production and a decrease in the diversity of socioeconomic activities.

Conclusion: Situational constraints and methodological obstacles are inherent in conflict settings and hamper conflict-related socioeconomic research. Furthermore, sensitive methods to assess and meaningfully interpret longitudinal micro-level wealth data from low-income countries are lacking. Despite compelling evidence of socioeconomic dynamics triggered by armed conflicts at the macro-level, we could not identify similar effects at the micro-level. A deeper understanding of household profiles that are more resilient to armed conflict could help to better prevent and/or alleviate adverse conflict-related and increasingly civilian-borne socioeconomic effects.

* Correspondence: thomas.fuerst@unibas.ch

† Contributed equally

¹Department of Epidemiology and Public Health, Swiss Tropical and Public Health Institute, Basel, Switzerland

Full list of author information is available at the end of the article

Introduction

The importance of local, national and international efforts to halve extreme poverty on a global scale by 2015—one of the eight United Nations (UN) Millennium Development Goals (MDGs)—is partially driven by poverty's spurring effect on armed conflict and war (see endnote 1). Simultaneously, armed conflict and war have an undisputed effect on poverty itself. Consequently, poverty is a *cause* and a *consequence* of armed conflict and war.

Current conceptual frameworks for analyzing the interrelationship between armed conflict and war and poverty are mainly based on three legs; namely (i) cost of conflict, (ii) grievance and (iii) greed. The idea that armed conflict and war induce broad socioeconomic losses, and hence exacerbate poverty is widely accepted and supported by various cost of conflict analyses [1]. Cost of conflict analyses range from direct economic losses due to decreased growth rates of a nation's gross domestic product (GDP) [2-5] to direct and indirect costs on human health [6-12].

Additionally, there are less apparent costs due to human rights violations [13] and ecological damage [14,15].

There is less agreement, however, about the reverse theory: poverty *causing* armed conflict and war [1]. According to the grievance approach, unbalanced societal development leads to inequality, exclusion, and poverty, which in turn contribute to growing grievances that might lead to violent conflict [1,16-18]. Recent economic research challenges this grievance approach, as it might oversimplify the reality [19]. Neoclassical economic theory stresses that there are not only costs incurred by armed conflict and war, but also benefits, at least for certain population groups. Supporters of this theory argue that rather than just grievance, opportunities for predatory accumulation—namely greed—tends to cause conflict and war [20-23].

The aforementioned concepts are based principally on aggregated macro-level and/or qualitative evidence and focus on adherents of warring factions. Despite a rich body of literature on collateral micro-level health consequences of armed conflict [24-26], quantitative studies about the socioeconomic consequences of armed conflict and war at the micro-level (e.g. on trapped local households and non-committed civilians) are scarce [27]. In a recent article, we highlighted how armed conflict, health and wealth may be interlinked with the physical, social and socioeconomic environment [28]. An additional issue is that—while methodological difficulties regarding the interpretation of longitudinal socioeconomic micro-level data remain—theories aimed at the macro-level lack a solid foundation without sound

micro-level data, and important micro-level information remains neglected. For example, both causes and consequences of armed conflict and war are not shared equally amongst adherents of warring factions or non-committed civilians over an entire country and a longer period.

In order to contribute to a better understanding of micro-level socioeconomic consequences of armed conflict and war on civilians, we took the rare opportunity to have access to reliable longitudinal data on households located in a region of armed conflict in rural western Côte d'Ivoire. In a secondary analysis of two datasets, one obtained prior to the armed conflict and the other after military hostilities had ended, we applied the standard technique of principal component analysis (PCA) to construct an asset-based wealth index and investigate the impact of the armed conflict on relative socioeconomic position (SEP) of the households. Based on the results, we identified 'better-off', 'even' and 'worse-off' households. This outcome was then compared with other household characteristics and statements about the most important problems encountered during the conflict in order to check for distinct qualities of households that were socioeconomically more or less successful. Furthermore, concentration indices (CIs) and most poor/least poor (MP/LP) ratios were calculated to analyze changes in asset accumulation. We expected strong dynamics in socioeconomic indicators and this hypothesis is discussed in the light of the study design, methods and key findings.

Methods

Armed conflict in Côte d'Ivoire

In recent years, West Africa has witnessed growing political unrest, armed conflict, civil war and riots. Côte d'Ivoire, the economic powerhouse of the West African Monetary Union (UMEOA), has suffered increasingly violent conflict, starting with a coup d'état towards the end of 1999 that proceeded to a full-fledged armed conflict in 2002. This armed conflict officially ended in July 2003, but violence still flared up occasionally (e.g. during a break of cease-fire in November 2004). This tumultuous period left the country divided into a rebel-held North and a government-held South. The conflict had far reaching political implications and its resolution was on the agenda of international stakeholders, including the UN, the African Union (AU), France and a host of African presidents [29].

While the origins of the armed conflict in Côte d'Ivoire are still debated, possible causes include problems related to government services, legal issues about land tenure and other scarce natural resources, political bias on eligibility to stand for election, ethnic

discrimination and racism [30-33]. Several attempts have been made to study the consequences of the Ivorian conflict. For example, it is estimated that foreign direct investments in Côte d'Ivoire dropped by more than 60% (roughly 100 billion Franc CFA) during the sociopolitical crisis, which preceded the armed conflict [34]. The subsequent armed conflict left many research efforts in tatters [35], led to approximately 750,000 internally displaced persons (IDPs) and 500,000 refugees [36], caused a reduction in health staff of over 75% and an abandonment of health facilities of 80% [37].

Study area

The present study was carried out in the region of Man, western Côte d'Ivoire, between August 2002 and February 2004. The area belongs to the Ivorian rainforest zone, which is part of the Western African forest belt, but the forests have come under increased pressure of exploitation over the last decades [38,39].

Before the outbreak of the 2002 armed conflict, about 250,000 people lived in the region of Man, with approximately half living in the regional capital Man [40-42]. Local rural dwellers were mainly engaged in subsistence farming, cultivating upland and paddy rice, cassava, maize, plantain and yam. The most important cash crops were rice, coffee and cocoa, and the region also had a small timber industry [40]. Additionally, goats, cattle and poultry were kept as meat animals and these food sources were complemented by inland fish farming [42,43]. During the armed conflict, the area belonged to the rebel-held North and was subjected to intensive fighting as it was close to the military frontlines. The conflict had a deteriorating effect on the regional economy and there were reports of looting (e.g. the local fingerling production). In one survey, the percentage of households mentioning a permanent workplace decreased from 85% to 69% [44]. The population's vulnerability in terms of nutrition increased; household's reported disposable daily food budgets were almost halved and the number of meals per day dropped from an average of 2.5 to 1.7 [44]. Also, substantial forced migration occurred in the area, as estimates suggest every eighth person was displaced [44], and some villages were temporarily cut off from the outside world [45]. Schools were closed and physical infrastructure destroyed [37,45]. Public health programs in western Côte d'Ivoire suffered disproportionately with a loss of 88% of all trained health staff and 90% of all health facilities [37].

Questionnaire-based data collection

Since the mid-1990s, the Centre Suisse de Recherches Scientifiques en Côte d'Ivoire (CSRS) and the Université de Cocody-Abidjan—in collaboration with the Swiss

Tropical and Public Health Institute (Swiss TPH)—has carried out research and integrated control of infectious diseases (mainly malaria, schistosomiasis and soil-transmitted helminthiasis) in the study area (see endnote 2). These efforts have led to the development of a comprehensive database that, created before the armed conflict erupted, offered a unique baseline for any subsequent war-related impact analyses at the micro-level.

Baseline data for the present study were obtained from a household-based survey that was initially designed for assessing risk factors for malaria, schistosomiasis and soil-transmitted helminthiasis. This first household survey was conducted in August 2002, just one month before the armed conflict erupted. For data collection, a standardized questionnaire was developed, pretested and then administered by trained assistants who interviewed the respective heads of randomly selected households. The questionnaire included sections about general household characteristics (e.g. head of households' demographics and educational level; number, age and sex of all household members; main source of household income), health, hygiene, environmental risk factors, use of information media and a socioeconomic part comprising an asset list for the calculation of wealth indices. The asset list consisted of information on different household assets, including dwelling characteristics, house and land possession, electronic devices, sanitary and personal protective products (e.g. insecticide-treated bednets) and transport means. Notably lacking were questions related to investment assets and public goods other than access to the power grid. Prior to this study, similar asset lists have been used for evaluating the socioeconomic status in the study area [41,42,46-49].

After an official ceasefire in July 2003, researchers returned to the Man region under the auspices of a new project to integrate existing knowledge on intestinal parasites, but also to attempt to further the peace process and national reconciliation at a grass-roots level. The project was complemented by humanitarian aid activities through the provision of village and/or school-level first-aid kits and deworming of approximately 130,000 school-aged children and other high-risk groups (see endnote 3).

During this process, the same households from the previously mentioned August 2002 survey were traced according to (i) location and (ii) household members. In order to obtain informed consent for the secondary analysis, the purpose and procedures of the follow-up survey were discussed with local authorities and study participants. As the majority of the study participants were illiterate, oral informed consent was sought in the presence of district and regional health and education authorities, with detailed explanations given in the local

language by trained field assistants and local witnesses. This is the usual procedure when administering questionnaires without concurrent collection of biological samples (e.g. blood, stool or urine) in Côte d'Ivoire, and the whole process was approved by the institutional research commissions of CSRS and Swiss TPH and cleared by the national health and education authorities of Côte d'Ivoire. Subsequently, the consenting heads of households were interviewed again and, in order to allow for longitudinal comparison in a secondary analysis, were asked exactly the same questions as in the first survey. Additional questions about births, deaths, migration and the impact of the conflict were included in the second survey.

Operational details and community description

Operational details and a description of participating households' demographic profiles have been presented elsewhere (see endnote 4). In brief, the first survey included 7-9 randomly selected households from each of the 25 villages in the region of Man (total 203 households). This sample size represented approximately 5-10% of all households in the respective villages. The 25 villages were located within 4-40 km air-line distance around the regional capital of Man. Ten villages were accessible via main streets, 7 via minor streets and 8 only via gravel roads. Population estimates for the 25 villages ranged from 200 to 2,000 individuals. Interviews indicated that subsistence farming and agricultural production for markets were the two most important economic activities in all villages before the armed conflict, which is in accordance with the previously described regional economic structure. In addition, trade and fishing were other important activities in 10 villages, wood processing in 4 villages and artisanry in one village.

Between the first and the second survey and based on information from their neighbors, the members of 8 households fled because of the armed conflict, 7 households remained but their members were absent during the second survey, and 2 households each were in hide-out near the village, abandoned, or disappeared with unknown destiny. Consequently, the final study sample consisted of 182 households in 25 villages that have been interviewed twice (see Figure 1).

The number of inhabitants of the 182 studied households decreased from 1,749 to 1,625 between the first and second survey. This decrease was due to a negative migration balance ($n = -74$) and a negative natural population change ($n = -59$). These figures include an error due to misreporting of +9 individuals, which equals 0.5% of the original population. According to the heads of households, 66% of the absent household members had migrated to urban settings nearby or farther away. Furthermore, our data implied a lowered birth

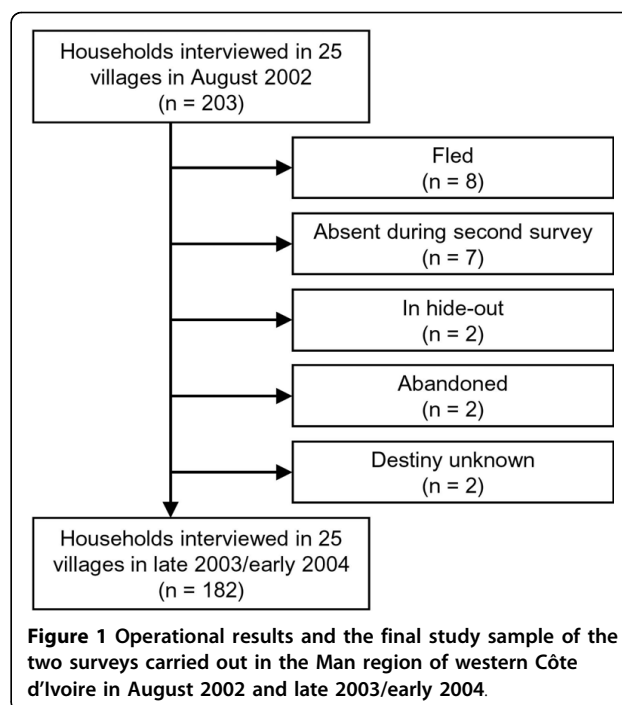


Figure 1 Operational results and the final study sample of the two surveys carried out in the Man region of western Côte d'Ivoire in August 2002 and late 2003/early 2004.

rate and an increased death rate. However, age and sex distribution did not vary significantly between the two surveys, and we can only speculate about the impact of the armed conflict on these findings (see Table 1 and endnote 4).

Analyses

Questionnaire data were double entered and cross-checked using EpiInfo v.6.04 (Centers for Disease Control and Prevention; Atlanta, GA, USA). Statistical analyses were performed with STATA v.9.1 (STATA Corporation; College Station, TX, USA). All statistical tests were carried out at a 5% significance level.

Data analysis was restricted to households with both complete baseline and follow-up data. For calculating a household's socioeconomic status, an asset-based index was constructed for each survey separately, according to a method described by Filmer and Pritchett [50]. In short, the applied method assigns a weighted sum as a proxy for socioeconomic wealth to each household, based on the following formula (1):

$$A_j = \sum_k \left[\left(a_{jk} - \bar{a}_k \right) / s_k * f_k \right] \quad (1)$$

A_j is the asset score of household j , a_{jk} is a binary variable of asset k for household j (0 = household does not have asset; 1 = household has asset; the only exception is the number of people per sleeping room where decimal numbers were used), \bar{a}_k and s_k are the unweighted sample mean and standard deviation (SD)

Table 1 Population, migration and natural population changes in the 182 households included in the August 2002 and late 2003/early 2004 surveys, stratified by sex and two age groups

Demographic characteristics	Total no.	% of original population	Sex ratio male:female	% under 16 years
Population 1 st survey (August 2002)	1,749	100.0	1.05	50.3
Migration				
Immigration	+64	+3.7	1.13	26.6
Emigration	-138	-7.9	1.23	39.1
Natural population changes				
Births	+36	+2.0	1.25	—
Deaths	-95	-5.4	1.07	25.3
Population 2 nd survey (late 2003/early 2004)	1,625 ^a	92.9 ^a	1.07	52.6
Population change	-124	-7.1	+0.02	+2.3

^a Includes a misreporting of +9 persons, which equals +0.5% of the original population

of asset k over all households and, finally, f_k is the so called 'raw' asset factor of asset k . This 'raw' asset factor is defined as the first component of the eigenvector of the respective asset and is derived by using PCA. According to formula (1), the possession of an asset increases A_j if the asset's eigenvector is positive. Hence, a positive eigenvector implies that an asset is a 'good' and its possession is associated with a higher SEP. In case of a negative eigenvector, an asset is considered a 'bad' and its possession is associated with a lower SEP. This method allows for ranking of the households according to their achieved weighted sum, A_j , in the two surveys and subsequent division into wealth quintiles. The whole procedure is further explained and illustrated in technical notes provided by the HNP/Poverty Thematic Group of the World Bank [51] and elsewhere [52] (see endnote 5).

For longitudinal analysis of socioeconomic wealth changes, households which are scaled down by more than one quintile between the two surveys were labeled as 'worse-off' and households which are scaled up by more than one quintile as 'better-off'. Fisher's exact test, Kruskal-Wallis test, and McNemar's χ^2 test were used as appropriate to find significant associations between the households' socioeconomic fates and other characteristics that were obtained by questionnaires.

MP/LP ratios and CIs were calculated in order to measure equity changes in households' asset possession [53,54]. Computation and analysis of CIs were carried out according to the convenient covariance and the convenient regression method for the micro-data case as described elsewhere [52] (see endnote 5).

All first survey characteristics of the 21 households lost to follow-up were compared with those of the 182

re-identified households in an attrition analysis. No significant differences were found, and hence potential selection bias considered as unlikely.

Results

Assets and asset score characteristics

Tables 2 and 3 give an overview of the asset possession of the 182 households in each survey, the calculated unweighted means and SD, the first component of the eigenvectors, and the scores obtained. Moreover, they show the distribution of all included assets over the computed wealth quintiles.

The first components of the eigenvectors explained 16.1% of the variability in asset possession in the first and 17.7% in the second survey. In both surveys, highest values were assigned to the possession of a video (standardized asset scores of 0.85 and 1.26, respectively). Lowest values were assigned to having only wooden walls in the first survey (-0.97) and to having no soap in the second survey (-0.55).

Longitudinal analysis of relative SEP

Plotting the calculated individual household scores of the first survey against the scores of the second survey in a scatter plot reveals the dynamics in relative SEP of the studied households. In Figure 2, households with improved relative SEP over the length of study were plotted closer to the upper left corner (greenish) and households with worsened relative SEP ended up in the lower right corner (reddish). In contrast, households which experienced a relatively stable socioeconomic period, be it on a high level (upper right corner) or on a low level (lower left corner), are situated close to the diagonal. According to this reasoning,

Table 2 Overview of included assets, household asset possession and asset scores in the first survey (before the armed conflict in Côte d'Ivoire, August 2002)

Asset variable	Proportion of households possessing the asset						Mean (\bar{a}_k)	SD (s_k)	Eigenvector (f_{ik})	Household score if household			
	Wealth quintiles					Total				Unweighted	First component (= 'raw' asset factor)	Has asset	Does not have asset
	Most poor	Very poor	Poor	Less poor	Least poor								
Possession of land	0.97	0.97	0.95	0.92	0.81	0.92	0.923	0.267	-0.1024	-0.0295	0.3538		
Possession of house	1.00	0.94	0.97	0.97	0.92	0.96	0.962	0.193	-0.0463	-0.0092	0.2309		
People per sleeping room ^a	4.5 ^a	4.3 ^a	2.5 ^a	2.6 ^a	2.9 ^a	2.7 ^a	2.662	2.255	-0.1580	— ^b	— ^b		
Type of wall													
Wood	0.05	0.00	0.00	0.00	0.00	0.01	0.011	0.105	-0.1021	-0.9663	0.0107		
Mud/clay	0.87	0.33	0.27	0.25	0.00	0.35	0.346	0.477	-0.2723	-0.3731	0.1976		
Cement	0.08	0.67	0.73	0.75	1.00	0.64	0.643	0.481	0.2926	0.2175	-0.3915		
Type of roof													
Thatch	0.60	0.06	0.03	0.03	0.00	0.14	0.143	0.351	-0.2789	-0.6812	0.1136		
Tiles	0.03	0.00	0.05	0.08	0.03	0.04	0.039	0.193	0.0424	0.2115	-0.0085		
Corrugated sheets	0.38	0.94	0.92	0.89	0.97	0.82	0.819	0.386	0.2321	0.1089	-0.4919		
Energy source for cooking													
Wood	1.00	0.97	1.00	0.97	0.94	0.98	0.978	0.147	-0.0606	-0.0091	0.4032		
Coal	0.00	0.03	0.00	0.03	0.08	0.03	0.027	0.164	0.0782	0.4640	-0.0129		
Electronic devices													
Electricity in house	0.05	0.17	0.49	0.86	1.00	0.51	0.511	0.501	0.3419	0.3335	-0.3485		
Refrigerator	0.00	0.00	0.00	0.03	0.22	0.05	0.050	0.217	0.1376	0.6016	-0.0313		
Radio	0.35	0.50	0.65	0.86	0.92	0.65	0.654	0.477	0.2211	0.1604	-0.3030		
Television	0.00	0.00	0.14	0.36	0.86	0.27	0.269	0.445	0.3287	0.5400	-0.1989		
Ventilator	0.00	0.00	0.03	0.11	0.44	0.12	0.115	0.320	0.2143	0.5917	-0.0772		
Video	0.00	0.00	0.00	0.00	0.03	0.01	0.005	0.074	0.0633	0.8511	-0.0043		
Sanitation infrastructure and personal protection													
No toilet	0.73	0.81	0.19	0.14	0.11	0.40	0.396	0.490	-0.2762	-0.3405	0.2232		
Uncemented toilet	0.16	0.11	0.11	0.03	0.06	0.09	0.093	0.292	-0.0693	-0.2153	0.0221		
Cemented toilet	0.11	0.08	0.68	0.81	0.81	0.49	0.494	0.501	0.3028	0.3058	-0.2986		
Soap	1.00	0.97	1.00	1.00	0.97	0.99	0.989	0.105	0.0189	0.0020	-0.1780		
Insecticide spray	0.11	0.06	0.05	0.39	0.39	0.20	0.198	0.399	0.1516	0.3047	-0.0752		
Mosquito net	0.16	0.22	0.19	0.19	0.39	0.23	0.231	0.422	0.0743	0.1354	-0.0407		
Main mean of transportation													
Feet/walking	1.00	0.97	0.84	0.67	0.50	0.80	0.797	0.404	-0.2331	-0.1174	0.4601		
Bicycle	0.00	0.03	0.03	0.25	0.33	0.13	0.126	0.333	0.1985	0.5204	-0.0753		
Car/motorbike	0.00	0.00	0.14	0.08	0.17	0.08	0.077	0.267	0.1044	0.3607	-0.0300		
Number of households	37	36	37	36	36	182							

^a Reports the average number of people per sleeping room in the respective wealth quintile

^b Computed score for one additional person per sleeping room: -0.0701

increasingly reddish or greenish areas in Figure 2 indicate higher household mobility with respect to their relative SEP. The dotted lines that are vertical to the axis and define the different rectangles represent the wealth quintile cut-off points in the respective surveys.

Table 4 shows that the relative SEP of 88 households (48.4%) changed between the first and second surveys. Overall, between the two time periods, 26 households (14.3%) rose or dropped by more than one quintile and twelve households (6.6%) could be classified as 'better-off' and 14 households (7.7%) as 'worse-off'.

Table 3 Overview of included assets, household asset possession and asset scores in the second survey (after the armed conflict in Côte d'Ivoire, late 2003/early 2004)

Asset variable	Proportion of households possessing the asset						Mean (\bar{a}_k)	SD (s_k)	Eigenvector (f_k)	Household score if household	
	Wealth quintiles									Unweighted	First component (= 'raw' asset factor)
	Most poor	Very poor	Poor	Less poor	Least poor	Total					
Possession of land	0.97	1.00	1.00	1.00	0.86	0.97	0.967	0.179	-0.1590	-0.0293	0.8590
Possession of house	0.97	1.00	1.00	0.97	0.86	0.96	0.962	0.193	-0.1403	-0.0280	0.6997
People per sleeping room ^a	3.9 ^a	4.4 ^a	2.4 ^a	2.6 ^a	3.1 ^a	2.7 ^a	2.663	2.508	-0.0582	— ^b	— ^b
Type of wall											
Wood	0.05	0.03	0.00	0.00	0.00	0.02	0.017	0.128	-0.0659	-0.5075	0.0085
Mud/clay	0.78	0.28	0.14	0.03	0.00	0.25	0.247	0.433	-0.2679	-0.4661	0.1531
Cement	0.16	0.69	0.87	0.97	1.00	0.74	0.736	0.442	0.2813	0.1679	-0.4687
Type of roof											
Thatch	0.51	0.17	0.00	0.00	0.00	0.14	0.137	0.345	-0.2176	-0.5437	0.0866
Tiles	0.03	0.08	0.08	0.03	0.03	0.05	0.050	0.217	-0.0094	-0.0411	0.0021
Corrugated sheets	0.46	0.75	0.92	0.97	0.97	0.81	0.813	0.391	0.1975	0.0944	-0.4110
Energy source for cooking											
Wood	1.00	0.97	0.97	1.00	0.92	0.97	0.973	0.164	-0.1405	-0.0231	0.8336
Coal	0.00	0.03	0.03	0.00	0.06	0.02	0.022	0.147	0.0990	0.6587	-0.0148
Electronic devices											
Electricity in house	0.16	0.31	0.54	0.83	0.89	0.54	0.544	0.499	0.2510	0.2292	-0.2734
Refrigerator	0.00	0.00	0.00	0.00	0.33	0.07	0.066	0.249	0.2047	0.7682	-0.0542
Radio	0.22	0.39	0.43	0.78	1.00	0.56	0.560	0.498	0.2582	0.2281	-0.2907
Television	0.00	0.00	0.14	0.31	0.81	0.25	0.247	0.433	0.3151	0.5483	-0.1801
Ventilator	0.00	0.00	0.03	0.11	0.50	0.13	0.126	0.333	0.2680	0.7027	-0.1017
Video	0.00	0.00	0.00	0.00	0.14	0.03	0.027	0.164	0.2122	1.2590	-0.0349
Sanitation infrastructure and personal protection											
No toilet	0.95	0.75	0.62	0.22	0.08	0.53	0.527	0.501	-0.2719	-0.2567	0.2860
Uncemented toilet	0.05	0.08	0.16	0.22	0.14	0.13	0.132	0.339	0.0335	0.0858	-0.0130
Cemented toilet	0.00	0.17	0.22	0.56	0.78	0.34	0.341	0.475	0.2625	0.3642	-0.1884
Soap	0.84	1.00	0.97	1.00	1.00	0.96	0.962	0.193	0.1105	0.0218	-0.5508
Insecticide spray	0.05	0.11	0.05	0.08	0.08	0.08	0.077	0.267	0.0653	0.2257	-0.0188
Mosquito net	0.03	0.03	0.11	0.14	0.44	0.15	0.148	0.356	0.2083	0.4985	-0.0866
Main mean of transportation											
Feet/walking	0.97	0.94	0.89	0.81	0.47	0.82	0.819	0.386	-0.2108	-0.0989	0.4468
Bicycle	0.03	0.06	0.08	0.11	0.33	0.12	0.121	0.327	0.1252	0.3367	-0.0463
Car/motorbike	0.00	0.00	0.03	0.08	0.19	0.06	0.060	0.239	0.1696	0.6670	-0.0426
Number of households	37	36	37	36	36	182					

^a Reports the average number of people per sleeping room in the respective wealth quintile

^b Computed score for one additional person per sleeping room: -0.0232

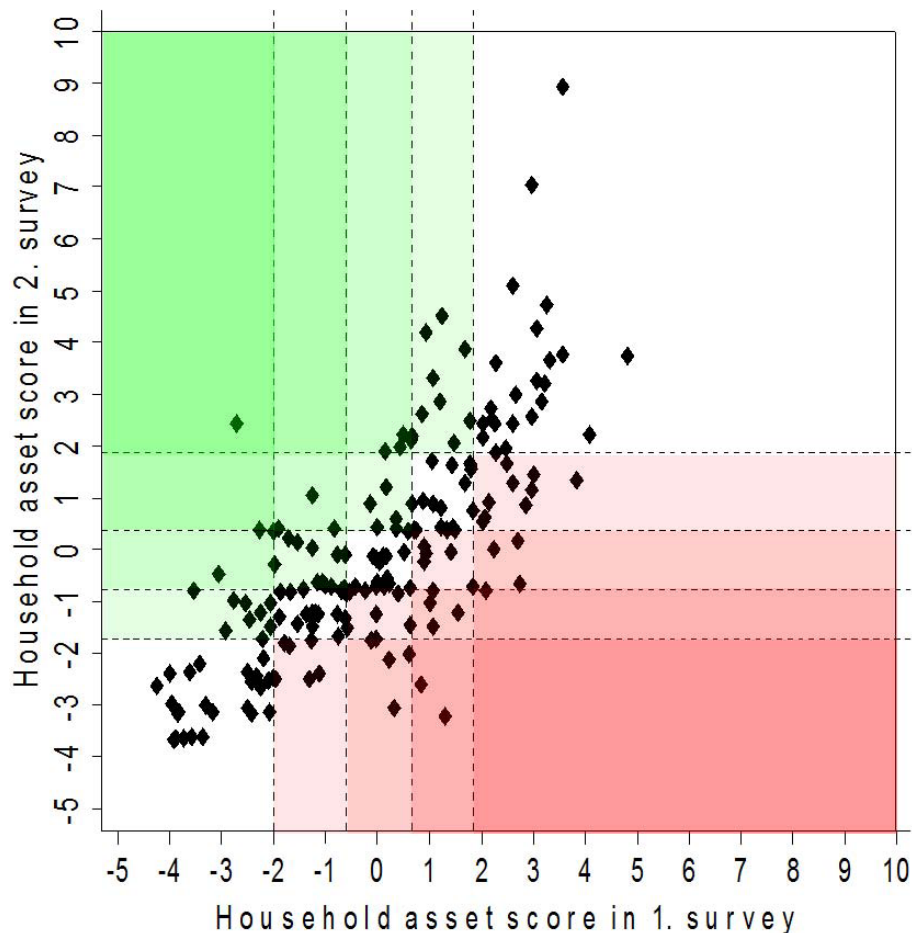


Figure 2 Scatter plot showing the individual household asset scores of the first survey (August 2002) against the scores of the second survey (late 2003/early 2004), with dotted lines vertical to the axis defining the respective wealth quintile cut-off points.

Characteristics of 'better-off', 'even' and 'worse-off' households

Tables 5 and 6 present an overview of the households' socioeconomic fates and other characteristics, which were reported in the two surveys. We found no statistically significant associations between the socioeconomic fates of households and reported characteristics of their respective heads of households, households' compositions

and accessibility, migrational or natural population changes, severe cases of illness, and important economic activities in the respective village of residence. The only significant associations found were related to problems reported since the beginning of the armed conflict. 'Even' households mentioned more often health-related problems than 'worse-off' or 'better-off' households ($p = 0.022$). Additionally, 'better-off' households complained

Table 4 Cross tabulation of the number of households in the different wealth quintiles in the two surveys, August 2002 and late 2003/early 2004

Wealth quintile in the 2 nd survey	Wealth quintile in the 1 st survey					Total
	Most poor	Very poor	Poor	Less poor	Least poor	
Least poor	1	0	5	8	22	36
Less poor	1	3	6	16	10	36
Poor	2	11	15	6	3	37
Very poor	8	16	7	4	1	36
Most poor	25	6	4	2	0	37
Total	37	36	37	36	36	182

Table 5 Household characteristics at the onset of the armed conflict in Côte d'Ivoire (first survey, August 2002) and households' socioeconomic fate during the armed conflict

Characteristics	Socioeconomic fate			p-value
	'Worse-off'	'Even'	'Better-off'	
Head of household (% of households with the same socioeconomic fate)				
Sex: male	92.9	89.7	91.7	
Sex: female	7.1	10.3	8.3	0.999*
Education: no	78.6	55.8	66.7	
Education: primary	21.4	32.1	25.0	
Education: higher	0.0	12.2	8.3	0.559*
Occupation: farmer	100.0	85.3	100.0	
Occupation: merchant	0.0	2.6	0.0	
Occupation: retiree	0.0	5.8	0.0	
Occupation: teacher	0.0	1.9	0.0	
Occupation: others	0.0	4.5	0.0	0.999*
Household composition (averages based on counts)				
Average no. of inhabitants	10.6	9.6	8.3	0.872**
Average no. of males	4.7	5.0	4.25	0.804**
Average no. children (< 16 years)	5.6	4.8	3.8	0.804**
Accessibility (% of households with the same socioeconomic fate)				
Gravel road	7.1	35.3	25.0	
Minor road	50.0	26.3	33.3	
Main road	42.9	38.5	41.7	0.162*
Located in village with the following economic activities (% of households with the same socioeconomic fate)				
Subsistence farming	100.0	100.0	100.0	1.000*
Agricultural production	100.0	100.0	100.0	1.000*
Trade	42.9	40.4	33.3	0.899*
Fishing	28.6	40.4	41.7	0.765*
Wood processing	28.6	14.7	16.7	0.765*
Artisanry	0.0	4.5	8.3	0.765*

* Based on Fisher's exact test

** Based on Kruskal-Wallis test

more often about the interruption of public services ($p = 0.050$) and the lack of food ($p = 0.001$) than their 'even' or 'worse-off' counterparts.

Comparison of the households' characteristics between the first and the second survey, irrespective of the households' socioeconomic fates, indicated a change in livelihood strategies. Significantly more heads of household were mainly engaged in farming in late 2003/early 2004 than in 2002 (McNemar's χ^2 test: $p < 0.001$). At the same time, the number of merchants increased and the number of teachers decreased, but neither trend was statistically significant (McNemar's χ^2 test: $p = 0.527$ and $p = 0.083$, respectively). However, the number of retirees (McNemar's χ^2 test: $p = 0.003$) and all other occupations (McNemar's χ^2 test: $p = 0.008$) significantly decreased (see Tables 5 and 6 and Figure 3). These findings are supported by reports of the unchanged importance of the agricultural sector in the villages of residence and increased importance of trade (McNemar's χ^2 test: $p < 0.001$), whereas wood processing

(McNemar's χ^2 test: $p < 0.001$) and artisanry (McNemar's χ^2 test: $p = 0.005$) completely disappeared and only fishing remained (McNemar's χ^2 test: $p = 0.895$).

Longitudinal analysis of equity shifts

Table 7 summarizes the MP/LP ratios and the CIs. As indicated by MP/LP ratios >1 , possession of land and house, higher numbers of people per sleeping room, low quality housing, cooking with wood, poor sanitation and walking as the main mean of transportation are 'bads' and are observed more often in the 'most poor' than in the 'least poor' households. Conversely, good quality housing, cooking with coal, possession of electronic devices, good sanitation and protective measures and mechanical means of transportation are 'goods' and are observed more often in the 'least poor' than in the 'most poor' households.

The CIs largely confirmed the findings from MP/LP ratios by assigning negative values to 'bads' and positive values to 'goods'. Neither indicator demonstrates

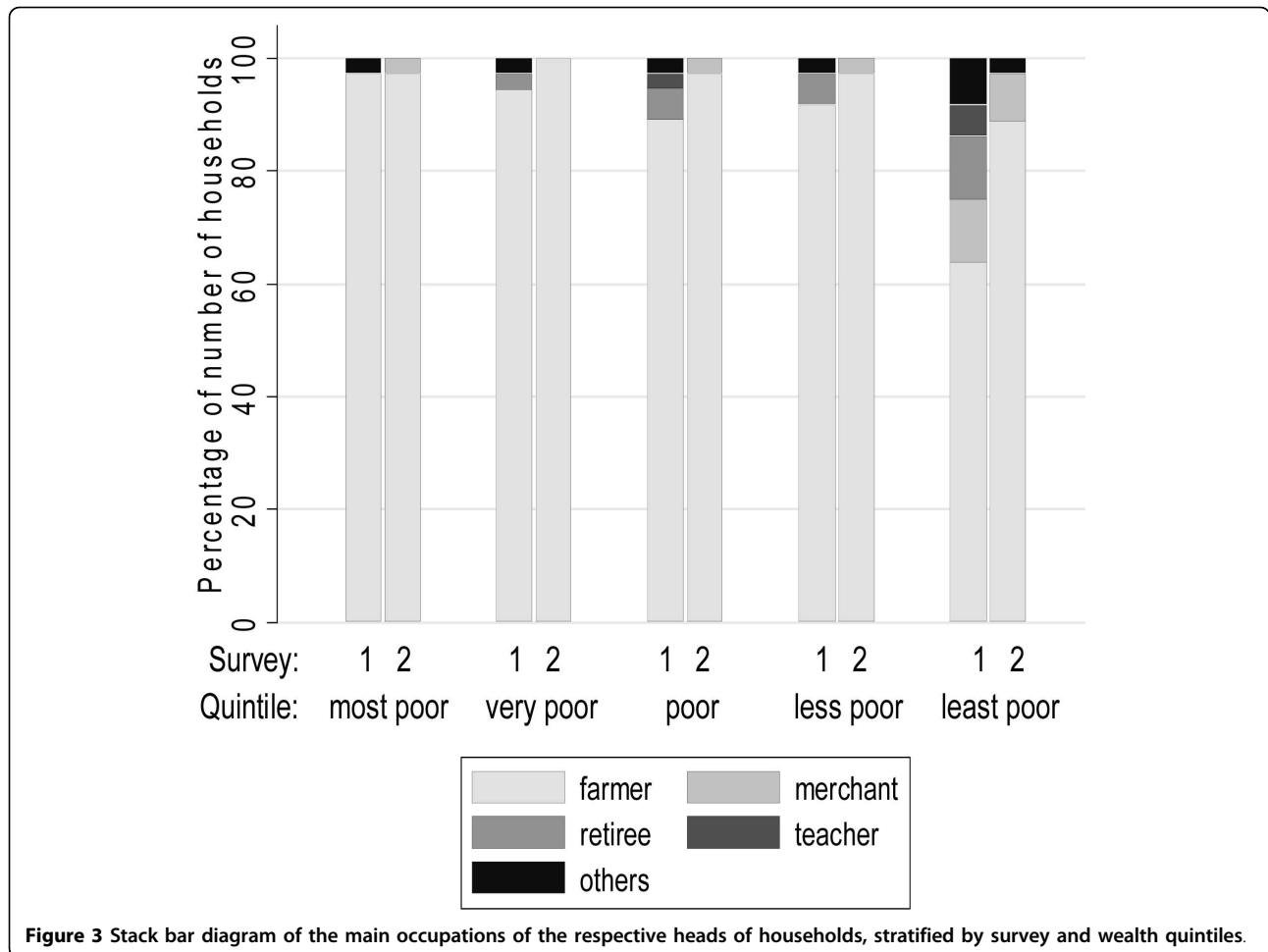
Table 6 Household characteristics after the armed conflict in Côte d'Ivoire (second survey, late 2003/early 2004) and households' socioeconomic fate during the armed conflict

Characteristics	Socioeconomic fate			p-value
	'Worse off'	'Even'	'Better off'	
Head of household (% of households with the same socioeconomic fate)				
Sex: male	85.7	87.8	91.7	
Sex: female	14.3	12.2	8.3	0.887*
Education: no	71.4	60.3	50.0	
Education: primary	28.6	24.4	41.7	
Education: higher	0.0	15.4	8.3	0.390*
Occupation: farmer	100.0	96.2	91.7	
Occupation: merchant	0.0	3.2	8.3	
Occupation: retiree	0.0	0.0	0.0	
Occupation: teacher	0.0	0.0	0.0	
Occupation: others	0.0	0.6	0.0	0.391*
Household composition (averages based on counts)				
Average no. of inhabitants	8.6	9.0	8.9	0.995**
Average no. of males	4.9	4.6	4.0	0.695**
Average no. children (< 16 years)	5.5	4.5	6.6	0.502**
Accessibility (% of households with the same socioeconomic fate)				
Gravel road	7.1	35.3	25.0	
Minor road	50.0	26.3	33.3	
Main road	42.9	38.5	41.7	0.162*
Located in village with following economic activities (% of households with the same socioeconomic fate)				
Subsistence farming	100.0	100.0	100.0	1.000*
Agricultural production	100.0	100.0	100.0	1.000*
Trade	42.9	60.9	66.7	0.380*
Fishing	57.1	39.1	33.3	0.380*
Wood processing	0.0	0.0	0.0	1.000*
Artisanry	0.0	0.0	0.0	1.000*
Migration change during the armed conflict (% of households with the same socioeconomic fate)				
< 0	21.4	24.4	50.0	
0	64.3	64.1	41.7	
> 0	14.3	11.5	8.3	0.383*
Natural population change during the armed conflict (% of households with the same socioeconomic fate)				
Births: 0	78.6	83.3	83.3	
Births: 1	21.4	13.5	16.7	
Births: 2	0.0	3.2	0.0	0.812*
Deaths: 0	64.3	62.8	75.0	
Deaths: 1	28.6	24.4	25.0	
Deaths: >1	7.1	12.8	0.0	0.835*
Heavy cases of illness during the armed conflict (% of households with the same socioeconomic fate)				
0	21.4	37.8	41.7	
1	28.6	33.3	16.7	
> 1	50.0	28.8	41.7	0.376*
Reported problems during the armed conflict (% of households with the same socioeconomic fate)				
Socioeconomic difficulty	50.0	72.4	83.3	0.134*
Health-related problems	21.4	52.6	25.0	0.022*#
IDPs/refugees	0.0	10.9	8.3	0.568*
Public services interrupted	0.0	12.8	33.3	0.050*#
Lack of food	14.3	26.9	75.0	0.001*#
Insecurity and threats	0.0	12.8	0.0	0.285*

* Based on Fisher's exact test

** Based on Kruskal-Wallis test

Significant at 95% significance level



exceptional equity shifts between the two surveys. The only statistically significant shift was an increased concentration of mosquito nets in wealthier households, as shown by the 95% confidence intervals of the CIs for 2002 and 2004 (see endnote 4).

Discussion

Micro-level data on relative SEP of households and its dynamics in the context of an armed conflict have been presented. Our data stem from two cross-sectional household surveys, the first carried out just before, and the second one and a half years after the outbreak of an armed conflict in Côte d'Ivoire.

Our secondary data analysis revealed consistency of the underlying data, illustrated by the high recapture rate of households (89.7%), and the accuracy of population data (potential misreporting of only 0.5% of the original population in the second survey). The reliability of the data, methods, and the constructed wealth index was confirmed by the algebraic sign assigned to each asset. The only exceptions were the negative values assigned to the variables for house possession and land

tenure. However, the absence of house and land ownership could be interpreted as proxies for employed work, which plausibly could be associated with higher wealth in the rural setting under investigation. In fact, households which did not possess land or housing were significantly more often engaged in non-agricultural work than other households ($p < 0.001$ for land and housing in both surveys). This exception has also been identified, and has been explained accordingly, in other rural settings when utilizing the same asset-based approach for wealth assessment (see for example reference [55]).

Despite the exceptional circumstances and the fact that 130 households (71.4%) mentioned socioeconomic difficulties, our analyses revealed weak socioeconomic dynamics with only every seventh household (14.3%) being labeled 'worse-off' or 'better-off' between the two surveys. Furthermore, no dramatic equity shifts were found. Total asset possession of all households varied little over the length of the study, with extremes of -15% for disposing of working cemented toilets and +13% for not having a toilet at all (see Tables 2 and 3 and endnote 4).

Table 7 Equity indicators of the studied households in the first (August 2002) and second (late 2003/early 2004) survey

Asset variable	MP/LP*		CI** [Conf. Int.***]	
	August 2002	Late 2003/early 2004	August 2002	Late 2003/early 2004
Possession of land	1.21	1.13	-0.03 (-0.06, -0.01)	-0.02 (-0.05, 0.00)
Possession of house	1.09	1.13	-0.01 (-0.03, 0.01)	-0.02 (-0.05, 0.00)
People per sleeping room	1.55	1.26	-0.12 (-0.18, -0.06)	-0.08 (-0.15, 0.00)
Type of wall				
Wood	n.s. ^a	n.s. ^a	-0.97 (-1 ^c , 0.32)	-0.72 (-1 ^c , 0.08)
Mud/clay	n.s. ^a	n.s. ^a	-0.44 (-0.52, -0.35)	-0.64 (-0.77, -0.52)
Cement	0.08	0.16	0.25 (0.21, 0.30)	0.23 (0.19, 0.27)
Type of roof				
Thatch	n.s. ^a	n.s. ^a	-0.75 (-1 ^c , -0.49)	-0.74 (-1 ^c , -0.48)
Tiles	0.96	0.96	0.26 (-0.12, 0.64)	-0.06 (-0.37, 0.26)
Corrugated sheets	0.39	0.47	0.12 (0.07, 0.17)	0.13 (0.08, 0.17)
Energy source for cooking				
Wood	1.06	1.09	-0.01 (-0.03, 0.00)	-0.01 (-0.04, 0.01)
Coal	0 ^b	0 ^b	0.57 (-0.09, 1 ^c)	0.40 (-0.27, 1 ^c)
Electronic devices				
Electricity in house	0.05	0.18	0.41 (0.36, 0.45)	0.30 (0.24, 0.36)
Refrigerator	0 ^b	0 ^b	0.72 (0.25, 1 ^c)	0.87 (0.40, 1 ^c)
Radio	0.38	0.22	0.19 (0.14, 0.25)	0.29 (0.24, 0.35)
Television	0 ^b	0 ^b	0.66 (0.55, 0.77)	0.65 (0.54, 0.77)
Ventilator	0 ^b	0 ^b	0.70 (0.42, 0.99)	0.77 (0.51, 1 ^c)
Video	0 ^b	0 ^b	0.96 (-0.88, 1 ^c)	0.96 (-0.02, 1 ^c)
Sanitation infrastructure and personal protection				
No toilet	6.58	11.40	-0.41 (-0.49, -0.33)	-0.34 (-0.39, -0.29)
Uncemented toilet	2.89	0.39	-0.25 (-0.52, 0.02)	0.17 (-0.02, 0.35)
Cemented toilet	0.13	0 ^b	0.37 (0.31, 0.42)	0.46 (0.37, 0.55)
Soap	1.03	0.84	0.00 (-0.01, 0.01)	0.03 (0.01, 0.05)
Insecticide spray	0.28	0.65	0.38 (0.19, 0.57)	0.11 (-0.22, 0.45)
Mosquito net	0.42	0.06	0.15 (-0.01, 0.31)	0.55 (0.33, 0.76) [#]
Main mean of transportation				
Feet/walking	2.00	2.06	-0.14 (-0.18, -0.10)	-0.12 (-0.15, -0.08)
Bicycle	0 ^b	0.08	0.62 (0.36, 0.88)	0.45 (0.23, 0.67)
Car/motorbike	0 ^b	0 ^b	0.43 (0.16, 0.70)	0.68 (0.33, 1 ^c)

* Most poor-least poor ratio (adjusted for the difference in total number of households in the two quintiles)

** Concentration index

*** 95% confidence interval of CI

Statistically significant equity shifts

a Not specified as division by zero is mathematically not defined

b Dividend is 0, indicating that no household of the most poor quintile owned the respective asset

c The calculated confidence interval by using the "convenient regression method" includes values larger than 1 or smaller than -1. As CI is only defined in the interval (-1,1), the values in the table are adjusted accordingly.

An attrition analysis of the 21 households which were interviewed in the first survey but could not be revisited in the second survey (see Figure 1) gave no indication of a selection bias, as the excluded households were symmetrically distributed over the wealthier and poorer wealth quintiles. Furthermore, there was no significant difference in the reported characteristics between those households included and those lost to follow-up. While we cannot exclude the possibility that households lost to

follow-up lost all their assets or were banished as a consequence of the armed conflict, by the same token it is possible that they became wealthier or could improve their social status and decided to migrate for these reasons. Reports from those households that remained in the area and participated in the follow-up survey revealed that among households lost to follow-up, 5 out of 21 (23.8%) migrated to rebel-controlled areas and another 5 (23.8%) moved to government-controlled

territories. This anecdotal evidence suggests that motivations and causes to migrate were diverse. A possible bias due to the operation of humanitarian aid projects in the area is also considered unlikely as the second round of household interviews took place before these humanitarian activities were fully implemented. Furthermore, the humanitarian aid projects were targeted on community rather than household or individual level. Hence, it is plausible that the observed dynamics are neither a matter of systematic asset in- or outflow nor a simple methodological artifact. Rather, the fluctuations in relative SEP seem to be the result of a limited reallocation of the always present assets among the studied households, without remarkable equity shifts.

The weak socioeconomic dynamics may at least partly explain why, except for the self-reported problems encountered since the beginning of the armed conflict, no significant associations were identified between the households' socioeconomic fate and other characteristics. As shown in Table 6, 'even' households mentioned significantly more often health-related problems than 'worse-off' or 'better-off' households. This finding is difficult to interpret, but the fact that 'better-off' households complained more often about the interruption of public services and the lack of food than their 'worse-off' or 'even' counterparts may reflect that they are not used to have any difficulties in these domains. Previous research in the same study area also observed that schoolchildren from wealthier households complained more often about suffering from disease symptoms than their less wealthy but equally healthy peers [46]. This pattern was identified in other epidemiological settings as well [56,57] and explained with higher expectations of the 'better-off', which makes them more sensitive to distress and consequently also more likely to complain.

Our findings of changed livelihood strategies are consistent with results from other reports [37,44]. One study carried out in central, north and west Côte d'Ivoire investigated the effect of the same armed conflict on human resources and the functioning of the health system. Significant reductions of well-trained staff in both the public and the private sector were observed, along with a collapse of the health system and other components of public infrastructure [37]. In the current investigation, we recognized a significant return to primary production of the interviewed heads of households. Nevertheless, we found no statistically significant associations between a household's socioeconomic fate and its main occupation or other important economic activities in the village of residence.

However, several particularities of the study design and the methodological approach applied may have influenced the outcome of the analyses. First, our sample size is small and therefore confidence intervals are large. This

fact may partially explain why most changes and associations were insignificant. Second, due to the potentially low level of wealth before the outbreak of the armed conflict, even a small change in asset possession may have been sufficient for a change in the wealth quintile classification. Furthermore, a certain degree of elusiveness was inevitable as we had to rely on a secondary analysis of self-reported information and could not investigate all relevant indicators. For example, the insignificant associations between the households' socioeconomic fates and certain household characteristics may simply highlight that the usual characterization of households (e.g. age, sex, education, occupation, changes in household composition, accessibility or illness) does not capture the most important factors of what made households 'better-off' and 'worse-off' after the armed conflict. Local power structure, ethnic group, family feuds, and rivalry may be even more important than usual during an armed conflict, as implied by informal comments of the study participants regarding trafficking of drugs and other illegal and stolen goods (see endnote 6).

Certain weaknesses in the study design are partly owed to the very nature of the study, since working in conflict areas is a challenging task with many unforeseeable events. Access to, and movement of, populations may lead to a selection bias, as discussed above. Furthermore, war-related research cannot rely on any experimental design and instead must depend upon observational studies, which are limited in their ability to address causality. The timing of any war-related research is particularly difficult. Social tensions and sporadic physical violence may precede and only slowly wane after a fully fledged armed conflict. Hence, it is difficult to obtain reliable 'pre-conflict' baseline and 'post-conflict' follow-up data. Often, it is uncertain whether the observed dynamics were just the near completion of a process that already began years ago (i.e. before baseline survey) or whether many serious consequences might still occur in the future (i.e. after follow-up survey) (see endnote 1).

Methodologically, household asset-based approaches for estimating relative SEP have proven to be valid in rural Côte d'Ivoire, as well as in other African settings [58]. This is especially true for the method applied here, which has been adapted and widely used for health surveys in various locations including the present study area [41,42,46-49]. Hence, the methodological approach seems to be adequate for analyzing the effects of an armed conflict on relative SEP of households. However, a study from southeast Nigeria found some indication that the reliability of asset-based wealth indices is only moderate [59], so we cannot exclude the possibility that a few of the identified changes in relative SEP were simply due to measurement errors.

Asset-based socioeconomic indices were calculated to estimate the households' relative SEPs in "a pragmatic response to data constraints" [50]. Asset possession was measured only as a binary socioeconomic indicator, irrespective of quantity or quality. Assets were not valued at current monetary market prices, but weighted with 'raw' asset factors originating from PCA. These 'raw' asset factors were re-calculated for both surveys, which may seem quite arbitrary, even though they changed only slightly in our study. However, at times of an armed conflict, relative importance of assets may change rapidly. Therefore, we adopted an approach with flexible weights (see endnote 7). Nevertheless, computed household scores represented ordinal values, which allowed for ranking the involved households, as opposed to cardinal values (e.g. monetary values), which would also provide information about changes in absolute wealth.

The idea that "(asset) weights should be allowed to vary over time" [60] is in line with a statement by Sahn and Stifel (2000). However, in their aggregate analysis of poverty over time and across African countries, they used fixed weights based on the results of pooled wealth indicators. They evaluated socioeconomic dynamics by setting fixed poverty lines at 25% and 40% as anchor points, and subsequently counted households to see whether more or less fall below these anchor points at certain places or points in time [60]. Hence, their approach is more rigid, but allows for direct temporal and regional comparison.

The focus on relative wealth dynamics seems appropriate as people tend to evaluate their living conditions by comparing their current with their previous circumstances or with the circumstances of people in their surroundings. This fact may also explain the findings of Goodhand (2003) that "absolute measures of poverty may be less significant (...) as triggers to violence" and that "transient poverty is likely to have a more significant influence on the dynamics of war and peace than chronic poverty" [1].

However, given the analytical approach, which is self-contained and not open as opposed to income or consumption studies, households have limited options for mobility. Only households in intermediate quintiles can truly rise and fall in the frame set by asset scores and wealth quintiles. In general, it is possible that asset-based wealth indices are more stable than other SEP indicators (e.g. absolute poverty in monetary terms, income or consumption). In times of economic hardship, households may draw upon other resources before selling their assets. Likewise, in prosperous periods, it may take some time until economic success is reflected in asset possession and an associated wealth index.

As substantial negative consequences of the armed conflict in Côte d'Ivoire are demonstrated in other

micro- and macro-level reports, and even by some of our own indicators, it is likely that our PCA-based analysis failed to detect at least some of the socioeconomic dynamics and associated predictors. Hence, it could be worthwhile to use a more comprehensive livelihood framework to assess the impact of armed conflicts in future investigations (see endnote 8). Furthermore, it would be useful to compare our results with other war-torn as well as peaceful settings in order to get a better idea about the threats and opportunities imposed on households by armed conflict as well as to further verify causality. In fact, high-quality data for comparison might be readily available from a growing number of demographic surveillance systems (DSS; see <http://www.indepth-network.org>; accessed 23 August 2010) or the comparatively new Household in Conflict Network (see <http://www.hicn.org>; accessed 23 August 2010).

In conclusion, we emphasize that more micro-level research on the measurement of SEP in low-income countries as well as on the impact of armed conflict and war is warranted. In general, methods to assess and meaningfully interpret longitudinal micro-level wealth data should be further developed. Recent methodological reviews demonstrated that all actual approaches for measuring SEP in low-income countries have their drawbacks. Furthermore, the results of the different methods showed only limited agreement and have restrictions for further processing [59,61-64]. Along with previous research undertaken in conflict zones elsewhere in Africa [37,65-76], the present study can be considered as additional evidence of the feasibility of research even in troubled times and zones. Knowledge about the profiles of households that are more resilient to armed conflict could help to better prevent and/or alleviate adverse conflict-related and increasingly civilian-borne socioeconomic effects. Consequently, we would like to reinforce Tam and colleagues' "call to arms" [77] in order to boost research related to armed conflict and war.

Competing interests

The authors declare that they have no competing interests.

Endnotes

1. For the purpose of this paper, the term "armed conflict" refers to the warlike events in Côte d'Ivoire between August 2002 and early 2004, and can be defined as a "contested incompatibility, which concerns government and/or territory where the use of armed force between two parties, of which at least one is the government of a state, results in at least 25 battle-related deaths" [78]. However, this definition is not comprehensive as it does not include, for example, conflict between non-state actors or social violence. Furthermore, one should be aware of the fact that "the distinction between war, predatory violence, and crime are becoming increasingly blurred" [1]. In our own analyses, we looked at the armed conflict as defined above, and considered the social tensions and sporadic physical violence, which preceded and followed the fully-fledged armed conflict, only in the interpretation of our findings in the discussion.

2. For further reading see references [37,40-43,45-49,79-90].
3. The project "Programme d'appui de la DDC à la réconciliation en Côte d'Ivoire" was supported by the Swiss Agency for Development and Cooperation (SDC) from 2003-2006. Using the concept of valorizing both research results and social trust earned in longstanding scientific partnerships, it comprised activities in three socio-cultural zones of Côte d'Ivoire to foster reconciliation and community cohesion in the period after the armed conflict. For this sociopolitical motive, the project also drew on the conservation of the Tai National Park and food security based on production, processing and post-harvest storage of yam and cassava (for further reading see references [45,91]).
4. For more details on operational results, households' demographic profiles and a comprehensive secondary analysis of the impact of the armed conflict on risk factors for malaria and neglected tropical diseases (NTDs), the reader is referred to reference [28].
5. The book by O'Donnell and colleagues (2008) can be downloaded at <http://go.worldbank.org/LVSSZJX900> (accessed 23 August 2010). It is an aggregation and revision of the technical notes, originally put forth by the World Bank's Poverty Reduction and Economic Management (PREM) web site (<http://www1.worldbank.org/prem/poverty/health/wbact>; accessed 26 September 2007; however, no longer accessible).
6. We have anecdotal evidence of "mercenaries carrying away truckloads of corrugated sheets and electronic goods". Consequently, some households seemed to hesitate to invest in new assets because of the fear of looting and because increased asset possession could pose an additional health threat to household members due to violence. While we cannot prove looting in the surveyed area, we assume that its frequent occurrence elsewhere also had a backlash on our findings.
7. In fact, the household rankings barely changed, whether we used 'raw' asset factors based only on first survey data for weighting both surveys (Spearman's rank correlation coefficient for first survey indices: 1.00, $p < 0.001$; and 0.99, $p < 0.001$ for second survey indices), or 'raw' asset factors based only on second survey data for weighting both surveys (0.99, $p < 0.001$; and 1.00, $p < 0.001$), or 'raw' asset factors based on pooled data (0.98, $p < 0.001$; and 0.99, $p < 0.001$). These findings are also in line with a paper by Sahn and Stifel (2000) (see their Note 17 in reference [60]).
8. See, for example, the comprehensive livelihood framework elaborated by the United Kingdom's Department for International Development (DFID), which includes the relevant context of vulnerability, the different livelihood assets and strategies, and the transforming structures and processes [92].

Authors' contributions

TF analyzed and interpreted the data and drafted the manuscript. ABT conceptualized and designed the study and was also involved in data analysis, data interpretation and article drafting. GR, CAA, OG and EKN contributed to the study conceptualization and design as well as data acquisition. DdS assisted in data analysis and interpretation. JU supervised TF and was involved in conceptualization and design of the study, data analysis and data interpretation. All authors were involved in critical review and revision of the manuscript, and read and approved its final version for publication.

Acknowledgements

We thank the Ministry of Higher Education and Research of Côte d'Ivoire for authorizing this study; the regional and district health and education authorities of Man for facilitating our return to the conflict afflicted region; the community authorities of the 25 villages selected in this survey; and the household heads who responded to our questionnaire surveys. We also thank Dr. Goh-Denis whose knowledge of Yacouba and work as enumerator was invaluable during the survey phase after the armed conflict. This study received financial support from the Swiss Agency for Development and Cooperation (SDC) for a project entitled "Contribution du CSRS au processus de réconciliation en Côte d'Ivoire" in the frame of the "Programme d'appui de la DDC à la réconciliation en Côte d'Ivoire" by SDC. T. Fürst (project no. PDFMP3-123185) and J. Utzinger (project no. PPOOB-102883, PPOOB-119129) are grateful to the Swiss National Science Foundation, and G. Raso acknowledges financial support by the University of Queensland for a fellowship.

Author details

¹Department of Epidemiology and Public Health, Swiss Tropical and Public Health Institute, Basel, Switzerland. ²University of Basel, Basel, Switzerland.

³Centre Suisse de Recherches Scientifiques en Côte d'Ivoire, Abidjan, Côte d'Ivoire. ⁴Molecular Parasitology Laboratory, Queensland Institute of Medical Research, Brisbane, Australia. ⁵School of Population Health, University of Queensland, Brisbane, Australia. ⁶Département de Sociologie, Université de Cocody-Abidjan, Abidjan, Côte d'Ivoire. ⁷Fondation Rurale Interjurassienne, Courtemelon, Courtételle, Switzerland. ⁸UFR Biosciences, Université de Cocody-Abidjan, Abidjan, Côte d'Ivoire.

Received: 3 December 2008 Accepted: 31 August 2010

Published: 31 August 2010

References

1. Goodhand J: **Enduring disorder and persistent poverty: a review of the linkages between war and chronic poverty.** *World Dev* 2003, **31**:629-646.
2. **The causes of conflict in sub-Saharan Africa.** 2010 [<http://www.dfid.gov.uk/pubs/files/conflictsaharanfrica.pdf>], accessed 23 August.
3. Collier P: **On the economic consequences of civil war.** *Oxf Econ Pap* 1999, **51**:168-183.
4. **Africa's missing billions—international arms flows and the cost of conflict.** 2010 [<http://www.oxfam.org/sites/www.oxfam.org/files/africas%20missing%20bils.pdf>], accessed 23 August.
5. Stewart F, Fitzgerald V: **War and underdevelopment.** *The economic and social consequences of conflict* Oxford: Oxford University Press 2000, **1**.
6. Dodge CP: **Health implications of war in Uganda and Sudan.** *Soc Sci Med* 1990, **31**:691-698.
7. Zwi A, Ugalde A: **Political violence in the Third World: a public health issue.** *Health Policy Plan* 1991, **6**:203-217.
8. Toole MJ, Waldman RJ: **The public health aspects of complex emergencies and refugee situations.** *Annu Rev Public Health* 1997, **18**:283-312.
9. Garfield RM, Neugut AI: **The human consequences of war.** In *War and public health. Updated edition.* Edited by: Levy BS, Sidel VW. Washington DC: Oxford University Press; 2000:27-38.
10. O'Dempsey TJ, Munslow B: **Globalisation, complex humanitarian emergencies and health.** *Ann Trop Med Parasitol* 2006, **100**:501-515.
11. Accorsi S, Fabiani M, Nattabi B, Corrado B, Iriso R, Ayella EO, Pido B, Onok PA, Ogwang M, Declich S: **The disease profile of poverty: morbidity and mortality in northern Uganda in the context of war, population displacement and HIV/AIDS.** *Trans R Soc Trop Med Hyg* 2005, **99**:226-233.
12. Gayer M, Legros D, Formenty P, Connolly MA: **Conflict and emerging infectious diseases.** *Emerg Infect Dis* 2007, **13**:1625-1631.
13. Geiger JH: **The impact of war on human rights.** In *War and public health. Updated edition.* Edited by: Levy BS, Sidel VW. Washington DC: Oxford University Press; 2000:39-50.
14. Levy BS, Shahi GS, Lee C: **The environmental consequences of war.** In *War and public health. Updated edition.* Edited by: Levy BS, Sidel VW. Washington DC: Oxford University Press; 2000:51-62.
15. de Merode E, Smith KH, Homewood K, Pettifor R, Rowcliffe M, Cowlishaw G: **The impact of armed conflict on protected-area efficacy in Central Africa.** *Biol Lett* 2007, **3**:299-301.
16. Booth JA: **Socioeconomic and political roots of national revolts in Central America.** *Lat Am Res Rev* 1991, **26**:33-74.
17. Homer-Dixon TF: *Environment, scarcity and violence* Princeton: Princeton University Press 1999.
18. Nafziger EW, Auvinen J: **Economic development, inequality, war, and state violence.** *World Dev* 2002, **30**:153-163.
19. Cramer C: *Civil war is not a stupid thing: exploring growth, distribution and conflict linkages* London: School of Oriental and African Studies (SOAS) 1997.
20. Hirshleifer J: **The dark side of force.** *Econ Inquiry* 1994, **32**:1-10.
21. Collier P: **Doing well out of war. An economic perspective.** In *Greed and grievance: economic agendas in civil wars.* Edited by: Berdal M, Malone D. Boulder: Lynne Rienner; 2000:91-112.
22. **Economic causes of civil conflict and their implications for policy.** 2010 [http://reference.kfupm.edu.sa/content/e/c/economic_causes_of_civil_conflict_and_th_98193.pdf], accessed 23 August.
23. de Soysa I: **The resource curse: are civil wars driven by rapacity or paucity?** In *Greed and grievance: economic agendas in civil wars.* Edited by: Berdal M, Malone D. Boulder: Lynne Rienner; 2000:113-136.
24. Assefa F, Jabarkhil MZ, Salama P, Spiegel P: **Malnutrition and mortality in Kohistan district, Afghanistan, April 2001.** *JAMA* 2001, **286**:2723-2728.

25. Lee TJ, Mullany LC, Richards AK, Kuiper HK, Maung C, Beyrer C: **Mortality rates in conflict zones in Karen, Karenni, and Mon states in eastern Burma.** *Trop Med Int Health* 2006, **11**:1119-1127.
26. Mackay DM: **The effects of civil war on the health of a rural community in Bangladesh.** *J Trop Med Hyg* 1974, **77**:120-127.
27. **Causes and consequences of civil strife: micro-level evidence from Uganda.** 2010 [http://www-wds.worldbank.org/external/default/WDSContentServer/WDSP/IB/2003/06/06/000094946_03052404044188/Rendered/PDF/multi0page.pdf], accessed 23 August.
28. Fürst T, Raso G, Acka CA, Tschannen AB, N'Goran EK, Utzinger J: **Dynamics of socioeconomic risk factors for neglected tropical diseases and malaria in an armed conflict.** *PLoS Negl Trop Dis* 2009, **3**:e513.
29. Mehler A: **Côte d'Ivoire: Chirac allein zu Haus?** Hamburg: Institut für Afrika-Kunde (IAK) 2004.
30. Woods D: **The tragedy of the cocoa pod: rent-seeking, land and ethnic conflict in Ivory Coast.** *J Mod Afr Stud* 2003, **41**:641-655.
31. Akindès F: **The roots of the military-political crisis in Côte d'Ivoire** Uppsala: Nordiska Afrikainstitutet 2004.
32. Blé Kessé A: **La Côte d'Ivoire en guerre. Le sens de l'imposture française** Paris: L'Harmattan 2005.
33. Bouquet C: **Géopolitique de la Côte d'Ivoire** Paris: A. Colin 2005.
34. **Regional impact of Côte d'Ivoire's 1999-2000 sociopolitical crisis: an assessment.** 2010 [http://www.imf.org/external/pubs/ft/wp/2003/wp0385.pdf], accessed 23 August.
35. Degen M: **Civil war leaves Ivory Coast research in tatters.** *Nature* 2003, **421**:680.
36. Martone G: **The crisis in West Africa.** *Am J Nurs* 2003, **103**:32-40.
37. Betsi NA, Koudou BG, Cissé G, Tschannen AB, Pignol AM, Ouattara Y, Madougou Z, Tanner M, Utzinger J: **Effect of an armed conflict on human resources and health systems in Côte d'Ivoire: prevention of and care for people with HIV/AIDS.** *AIDS Care* 2006, **18**:356-365.
38. Châtelain C, Gautier L, Spichiger R: **A recent history of forest fragmentation in southwestern Ivory Coast.** *Biodiversity Conserv* 1996, **5**:37-53.
39. **State of the world's forests 2003.** 2010 [http://www.fao.org/docrep/005/y7581e/y7581e00.htm#TopOfPage], accessed 23 August.
40. Utzinger J, N'Goran EK, Ossey YA, Booth M, Traoré M, Lohourignon KL, Allangba A, Ahiba LA, Tanner M, Lengeler C: **Rapid screening for *Schistosoma mansoni* in western Côte d'Ivoire using a simple school questionnaire.** *Bull World Health Organ* 2000, **78**:389-398.
41. Raso G, Matthys B, N'Goran EK, Tanner M, Vounatsou P, Utzinger J: **Spatial risk prediction and mapping of *Schistosoma mansoni* infections among schoolchildren living in western Côte d'Ivoire.** *Parasitology* 2005, **131**:97-108.
42. Matthys B, Vounatsou P, Raso G, Tschannen AB, Becket EG, Gosoniou L, Cissé G, Tanner M, N'Goran EK, Utzinger J: **Urban farming and malaria risk factors in a medium-sized town in Côte d'Ivoire.** *Am J Trop Med Hyg* 2006, **75**:1223-1231.
43. Matthys B, N'Goran EK, Kone M, Koudou BG, Vounatsou P, Cissé G, Tschannen AB, Tanner M, Utzinger J: **Urban agricultural land use and characterization of mosquito larval habitats in a medium-sized town of Côte d'Ivoire.** *J Vector Ecol* 2006, **31**:319-333.
44. Ministère de la Santé de la Côte d'Ivoire, UNICEF, WHO: **Enquête nutrition, santé et mortalité dans l'ouest de la Côte d'Ivoire.** 2004.
45. Tschannen AB, Utzinger J, Cissé G, Girardin O, Tanner M, N'Goran EK: **Un rôle salubre pour la recherche scientifique: appui au processus de réconciliation et à la reconstruction post-conflit du secteur sanitaire dans l'Ouest de la Côte d'Ivoire.** *Bulletin Medicus Mundi Schweiz* 2005, **98**:42-45.
46. Raso G, Utzinger J, Silué KD, Ouattara M, Yapi A, Toty A, Matthys B, Vounatsou P, Tanner M, N'Goran EK: **Disparities in parasitic infections, perceived ill health and access to health care among poorer and less poor schoolchildren of rural Côte d'Ivoire.** *Trop Med Int Health* 2005, **10**:42-57.
47. Raso G, Vounatsou P, Gosoniou L, Tanner M, N'Goran EK, Utzinger J: **Risk factors and spatial patterns of hookworm infection among schoolchildren in a rural area of western Côte d'Ivoire.** *Int J Parasitol* 2006, **36**:201-210.
48. Raso G, Vounatsou P, Singer BH, N'Goran EK, Tanner M, Utzinger J: **An integrated approach for risk profiling and spatial prediction of *Schistosoma mansoni*-hookworm coinfection.** *Proc Natl Acad Sci USA* 2006, **103**:6934-6939.
49. Matthys B, Tschannen AB, Tian-Bi NT, Comoé H, Diabaté S, Traoré M, Vounatsou P, Raso G, Gosoniou L, Tanner M, et al: **Risk factors for *Schistosoma mansoni* and hookworm in urban farming communities in western Côte d'Ivoire.** *Trop Med Int Health* 2007, **12**:709-723.
50. Filmer D, Pritchett LH: **Estimating wealth effects without expenditure data--or tears: an application to educational enrollments in states of India.** *Demography* 2001, **38**:115-132.
51. Gwatkin DR, Rustein S, Johnson K, Pande R, Wagstaff A: **Socio-economic differences in health, nutrition, and population in the Côte d'Ivoire** Washington DC: World Bank 2000.
52. O'Donnell O, Van Doorslaer E, Wagstaff A, Lindelow M: **Analyzing health equity using household survey data. A guide to techniques and their implementation** Washington DC: World Bank 2008.
53. Wagstaff A, Paci P, van Doorslaer E: **On the measurement of inequalities in health.** *Soc Sci Med* 1991, **33**:545-557.
54. Kakwani N, Wagstaff A, Van Doorslaer E: **Socioeconomic inequalities in health: measurement, computation, and statistical inference.** *J Econom* 1997, **77**:87-103.
55. Mwangi E, Masanja H, Juma Z, Momburi D, Mkilindi Y, Mbuya C, Kasale H, Reid G, de Savigny D: **Socio-economic status and health inequalities in rural Tanzania: evidence from the Rufiji demographic surveillance system. In *Measuring health equity in small areas: findings from demographic surveillance systems.*** Edited by: INDEPTH Network. Aldershot: Ashgate Publishing; 2005:19-32.
56. van Doorslaer E, Gerdtham UG: **Does inequality in self-assessed health predict inequality in survival by income? Evidence from Swedish data.** *Soc Sci Med* 2003, **57**:1621-1629.
57. Zere E, McIntyre D: **Equity in self-reported adult illness and use of health service in South Africa: inter-temporal comparison.** *J Health Popul Nutr* 2003, **21**:205-215.
58. Morris SS, Carletto C, Hoddinott J, Christiaensen LJ: **Validity of rapid estimates of household wealth and income for health surveys in rural Africa.** *J Epidemiol Community Health* 2000, **54**:381-387.
59. Onwujekwe O, Hanson K, Fox-Rushby J: **Some indicators of socio-economic status may not be reliable and use of indices with these data could worsen equity.** *Health Econ* 2006, **15**:639-644.
60. Sahn DE, Stifel DC: **Poverty comparisons over time and across countries in Africa.** *World Dev* 2000, **28**:2123-2155.
61. Vyas S, Kumaranayake L: **Constructing socio-economic status indices: how to use principal components analysis.** *Health Policy Plan* 2006, **21**:459-468.
62. Hargreaves JR, Morison LA, Gear JS, Kim JC, Makhubele MB, Porter JD, Watts C, Pronyk PM: **Assessing household wealth in health studies in developing countries: a comparison of participatory wealth ranking and survey techniques from rural South Africa.** *Emerg Themes Epidemiol* 2007, **4**:4.
63. Howe LD, Hargreaves JR, Huttly SR: **Issues in the construction of wealth indices for the measurement of socio-economic position in low-income countries.** *Emerg Themes Epidemiol* 2008, **5**:3.
64. Howe LD, Hargreaves JR, Gabrysch S, Huttly SR: **Is the wealth index a proxy for consumption expenditure? A systematic review.** *J Epidemiol Community Health* 2009, **63**:871-877.
65. Aaby P, Gomes J, Fernandes M, Djana Q, Lisse I, Jensen H: **Nutritional status and mortality of refugee and resident children in a non-camp setting during conflict: follow up study in Guinea-Bissau.** *BMJ* 1999, **319**:878-881.
66. Aaby P, Jensen H, Garly ML, Bale C, Martins C, Lisse I: **Routine vaccinations and child survival in a war situation with high mortality: effect of gender.** *Vaccine* 2002, **21**:15-20.
67. Tangermann RH, Hull HF, Jafari H, Nkwane B, Everts H, Aylward RB: **Eradication of poliomyelitis in countries affected by conflict.** *Bull World Health Organ* 2000, **78**:330-338.
68. Gustafson P, Gomes VF, Vieira CS, Jensen H, Seng R, Norberg R, Samb B, Naucier A, Aaby P: **Tuberculosis mortality during a civil war in Guinea-Bissau.** *JAMA* 2001, **286**:599-603.
69. Ahuka OL, Chabikuli N, Ogunbanjo GA: **The effects of armed conflict on pregnancy outcomes in the Congo.** *Int J Gynaecol Obstet* 2004, **84**:91-92.
70. Ahuka OL, Toko RM, Omanga FU, Tshimpanga BJ: **Congenital malformations in the North-Eastern Democratic Republic of Congo during civil war.** *East Afr Med J* 2006, **83**:95-99.

71. DeLargy P, Alakbarov R: **Thinking ahead about reproductive health: contingency planning and emergency preparedness in crisis situations (Iraq and West Africa).** *Disasters* 2004, **28**:340-350.
72. Larsen MM, Sartie MT, Musa T, Casey SE, Tommy J, Saldinger M: **Changes in HIV/AIDS/STI knowledge, attitudes and practices among commercial sex workers and military forces in Port Loko, Sierra Leone.** *Disasters* 2004, **28**:239-254.
73. Nielsen J, Valentiner-Branth P, Martins C, Cabral F, Aaby P: **Malnourished children and supplementary feeding during the war emergency in Guinea-Bissau in 1998-1999.** *Am J Clin Nutr* 2004, **80**:1036-1042.
74. Nielsen J, Benn CS, Bale C, Martins C, Aaby P: **Vitamin A supplementation during war-emergency in Guinea-Bissau 1998-1999.** *Acta Trop* 2005, **93**:275-282.
75. Nielsen J, Jensen H, Andersen PK, Aaby P: **Mortality patterns during a war in Guinea-Bissau 1998-99: changes in risk factors?** *Int J Epidemiol* 2006, **35**:438-446.
76. Sodemann M, Veirum J, Biai S, Nielsen J, Bale C, Skytte Jakobsen M, Gustafson P, Aaby P: **Reduced case fatality among hospitalized children during a war in Guinea-Bissau: a lesson in equity.** *Acta Paediatr* 2004, **93**:959-964.
77. Tam CC, Lopman BA, Bornemisza O, Sondorp E: **Epidemiology in conflict—a call to arms.** *Emerg Themes Epidemiol* 2004, **1**:5.
78. Wallenstein P, Sollenberg M: **Armed conflict, 1989-2000.** *J Peace Res* 2001, **38**:629-644.
79. Utzinger J, N'Goran EK, Esse Aya CM, Acka Adjoua C, Lohourignon KL, Tanner M, Lengeler C: **Schistosoma mansoni, intestinal parasites and perceived morbidity indicators in schoolchildren in a rural endemic area of western Côte d'Ivoire.** *Trop Med Int Health* 1998, **3**:711-720.
80. Utzinger J, N'Goran EK, Marti HP, Tanner M, Lengeler C: **Intestinal amoebiasis, giardiasis and geohelminthiasis: their association with other intestinal parasites and reported intestinal symptoms.** *Trans R Soc Trop Med Hyg* 1999, **93**:137-141.
81. Utzinger J, N'Goran EK, N'Dri A, Lengeler C, Tanner M: **Efficacy of praziquantel against Schistosoma mansoni with particular consideration for intensity of infection.** *Trop Med Int Health* 2000, **5**:771-778.
82. Utzinger J, N'Goran EK, N'Dri A, Lengeler C, Xiao SH, Tanner M: **Oral artemether for prevention of Schistosoma mansoni infection: randomised controlled trial.** *Lancet* 2000, **355**:1320-1325.
83. Utzinger J, N'Goran EK, Tanner M, Lengeler C: **Simple anamnestic questions and recalled water-contact patterns for self-diagnosis of Schistosoma mansoni infection among schoolchildren in western Côte d'Ivoire.** *Am J Trop Med Hyg* 2000, **62**:649-655.
84. Utzinger J, Vounatsou P, N'Goran EK, Tanner M, Booth M: **Reduction in the prevalence and intensity of hookworm infections after praziquantel treatment for schistosomiasis infection.** *Int J Parasitol* 2002, **32**:759-765.
85. Keiser J, N'Goran EK, Singer BH, Lengeler C, Tanner M, Utzinger J: **Association between Schistosoma mansoni and hookworm infections among schoolchildren in Côte d'Ivoire.** *Acta Trop* 2002, **84**:31-41.
86. Keiser J, N'Goran EK, Traoré M, Lohourignon KL, Singer BH, Lengeler C, Tanner M, Utzinger J: **Polyparasitism with Schistosoma mansoni, geohelminths, and intestinal protozoa in rural Côte d'Ivoire.** *J Parasitol* 2002, **88**:461-466.
87. Booth M, Vounatsou P, N'Goran EK, Tanner M, Utzinger J: **The influence of sampling effort and the performance of the Kato-Katz technique in diagnosing Schistosoma mansoni and hookworm co-infections in rural Côte d'Ivoire.** *Parasitology* 2003, **127**:525-531.
88. Raso G, Luginbühl A, Adjoua CA, Tian-Bi NT, Silué KD, Matthys B, Vounatsou P, Wang Y, Dumas ME, Holmes E, et al: **Multiple parasite infections and their relationship to self-reported morbidity in a community of rural Côte d'Ivoire.** *Int J Epidemiol* 2004, **33**:1092-1102.
89. Raso G, N'Goran EK, Toty A, Luginbühl A, Adjoua CA, Tian-Bi NT, Bogoch I, Vounatsou P, Tanner M, Utzinger J: **Efficacy and side effects of praziquantel against Schistosoma mansoni in a community of western Côte d'Ivoire.** *Trans R Soc Trop Med Hyg* 2004, **98**:18-27.
90. Beck-Wörner C, Raso G, Vounatsou P, N'Goran EK, Rigo G, Parlow E, Utzinger J: **Bayesian spatial risk prediction of Schistosoma mansoni infection in western Côte d'Ivoire using a remotely-sensed digital elevation model.** *Am J Trop Med Hyg* 2007, **76**:956-963.
91. Tchuem Tchuenté LA, N'Goran EK: **Schistosomiasis and soil-transmitted helminthiasis control in Cameroon and Côte d'Ivoire: implementing control on a limited budget.** *Parasitology* 2009, **136**:1739-1745.
92. **Sustainable livelihoods guidance sheets.** 2010 [http://www.livelihoods.org/info/info_guidancesheets.html], accessed 23 August.

doi:10.1186/1742-7622-7-6

Cite this article as: Fürst et al.: Effect of an armed conflict on relative socioeconomic position of rural households: case study from western Côte d'Ivoire. *Emerging Themes in Epidemiology* 2010 **7**:6.

Submit your next manuscript to BioMed Central and take full advantage of:

- Convenient online submission
- Thorough peer review
- No space constraints or color figure charges
- Immediate publication on acceptance
- Inclusion in PubMed, CAS, Scopus and Google Scholar
- Research which is freely available for redistribution

Submit your manuscript at
www.biomedcentral.com/submit

