

RESEARCH

Open Access

Buccal mucosa carcinoma: surgical margin less than 3 mm, not 5 mm, predicts locoregional recurrence

Wen-Yen Chiou¹, Hon-Yi Lin^{1,2}, Feng-Chun Hsu¹, Moon-Sing Lee^{1,2}, Hsu-Chueh Ho³, Yu-Chieh Su⁴, Ching-Chih Lee³, Chen-Hsi Hsieh⁵, Yao-Ching Wang^{6,7*}, Shih-Kai Hung^{1,2*}

Abstract

Background: Most treatment failure of buccal mucosal cancer post surgery is locoregional recurrence. We tried to figure out how close the surgical margin being unsafe and needed further adjuvant treatment.

Methods: Between August 2000 and June 2008, a total of 110 patients with buccal mucosa carcinoma (25 with stage I, 31 with stage II, 11 with stage III, and 43 with Stage IV classified according to the American Joint Committee on Cancer 6th edition) were treated with surgery alone ($n = 32$), surgery plus postoperative radiotherapy ($n = 38$) or surgery plus adjuvant concurrent chemoradiotherapy ($n = 40$).

Main outcome measures: The primary endpoint was locoregional disease control.

Results: The median follow-up time at analysis was 25 months (range, 4-104 months). The 3-year locoregional control rates were significantly different when a 3-mm surgical margin (≤ 3 versus > 3 mm, 71% versus 95%, $p = 0.04$) but not a 5-mm margin (75% versus 92%, $p = 0.22$) was used as the cut-off level. We also found a quantitative correlation between surgical margin and locoregional failure (hazard ratio, 2.16; 95% confidence interval, 1.14 - 4.11; $p = 0.019$). Multivariate analysis identified pN classification and surgical margin as independent factors affecting disease-free survival and locoregional control.

Conclusions: Narrow surgical margin ≤ 3 mm, but not 5 mm, is associated with high risk for locoregional recurrence of buccal mucosa carcinoma. More aggressive treatment after surgery is suggested.

Background

The incidence of buccal mucosa carcinoma has rapidly increased in Taiwan in recent decades; major risk factors for this disease are smoking, alcohol drinking, and betel nut chewing[1-3]. In patients with buccal mucosa carcinoma, locoregional recurrence (rate, 30-80%) is the main cause of treatment failure[4,5]. Several predictive factors for locoregional recurrence have been reported: bone erosion or invasion, positive surgical margin, perineural infiltration or invasion, vascular invasion, lymph node involvement, and extracapsular extension of tumor from the involved lymph node[6].

To reduce the risk of locoregional recurrence, radical surgery plus postoperative radiotherapy (RT) has been recommended for locoregionally advanced disease [7-9]. More recently, two large-scale randomized trials by the Radiation Therapy Oncology Group (RTOG) and the European Organization for Research Treatment of Cancer (EORTC) have demonstrated definitive benefits of post-operative concurrent chemoradiotherapy (CCRT) after radical surgery in patients with high-risk head-and-neck cancers [10,11]. National Comprehensive Cancer Network treatment guidelines recommend post-operative CCRT for patients with positive surgical margin or nodal extracapsular extension. However, in our limited treatment experience, patients with close surgical margins still have a high risk of locoregional recurrence. In the literature, close surgical margins less than 3 mm[12] or 5 mm[13-15] have been reported to associate with a

* Correspondence: jaunty01@yahoo.com.tw; oncology158@yahoo.com.tw

¹Department of Radiation Oncology, Buddhist Dalin Tzu Chi General Hospital, Chiayi, Taiwan

⁶Department of Radiation Oncology, China Medical University Hospital, Taichung, Taiwan

Full list of author information is available at the end of the article

high risk of cancer recurrence. However, there is still no universally agreed on definition of close surgical margin in buccal mucosa carcinoma.

Hence, we conducted this study to explore the effect of close surgical margin on outcome in patients with buccal mucosa carcinoma; and more importantly, to define close surgical margins in these patients. The primary endpoint was locoregional disease control and the secondary endpoints were disease-free survival, disease-specific survival, distant-metastatic survival, and overall survival. Other prognostic factors were also analyzed.

Methods

Ethical considerations

The procedures we followed were in accordance with the ethical standards of the committee on human experimentation of our institution and with the Helsinki Declaration of 1975, as revised in 1983. This study was approved by the Institutional Review Board at Buddhist Dalin Tzu Chi General Hospital before this study was performed.

Patients and stage classification

The records of 134 patients with buccal mucosa carcinoma, treated from August 2000 to June 2008, were retrospectively reviewed. All patients received definitive treatments and had no distant metastasis. Twenty-four patients treated with CCRT alone ($n = 7$), RT alone ($n = 5$), neoadjuvant therapy plus surgery ($n = 6$), or who had a synchronous second primary ($n = 6$) were excluded. Thus, the remaining 110 patients who underwent radical surgery with or without adjuvant treatments were analyzed. Cancer staging was classified according to the American Joint Committee on Cancer, the 6th edition[16].

Treatment modality

Radical surgery consisted of wide excision with or without flap reconstruction for primary tumor and of unilateral or bilateral radical neck dissection for neck disease management. Pathology reports were reviewed for prognostic factor analysis. Adjuvant treatments were started 4-6 weeks after surgery, if indicated. Adjuvant CCRT was indicated for positive margin, extracapsular nodal spread, or combined any other 2 risk factors, including perineural invasion, vascular permeation, pT3, pT4 or N (+) nodal disease. Adjuvant RT was indicated for single risk factor except positive margin and extracapsular nodal spread.

For 78 irradiated patients, post-operative Intensity Modulated Radiotherapy (IMRT) was carried out using an inverse planning system (PLATO, Nucletron Inc., Veenendaal, The Netherlands). The radiation field encompassed the surgical bed of the primary tumor and

neck. The critical normal structures used for optimization included the brain stem, spinal cord, parotid glands, optic nerves, optic chiasm, lenses, and eyeballs. During RT, electronic portal imaging was performed weekly for verification. The prescribed doses delivered by external beam RT were as follows: 70-72 Gy to the gross tumor volume; 60-66 Gy to the high risk nodal region; and, 50-60 Gy to the low risk nodal region. Conventional RT fractionation was given, namely 1.8-2.0 Gy per day and 5 days per week for 6-7 weeks. The spinal cord dose was limited to 45 Gy.

Chemotherapy was given concurrently with and after RT, if indicated. The chemotherapy protocol consisted of a concurrent two-month course of cisplatin and fluorouracil (5-FU) followed by another 2-month course after RT, with regimens of cisplatin (60-100 mg/m²/day) on day 1 and 5-FU (1000 mg/m²/day) on days 1-5. We evaluated treatment toxicities by using the common toxicity criteria of the National Cancer Institute, V2.0[17].

Statistical methods and definitions

Survival and follow-up times were calculated from the day of pathological diagnosis to the day of last follow-up or death. We used commercial statistical software (SPSS version 12.0; SPSS Inc., Chicago, IL, USA) to conduct statistical analyses, as follows: the Kaplan-Meier method to cumulatively estimate survival and disease-control rates; the log-rank test to assess curve difference between groups; Pearson's χ^2 test to evaluate differences between variables; and, Cox proportional hazard regression to perform multivariate analysis for hazard ratio (HR) assessment. For estimating the effective size, HR was provided with a 95% confidence interval (CI) in addition to a conventional p value. All tests were two-tailed and considered to be statistically significant when $p < 0.05$.

Surgical margin was defined as the distance between the outer edge of the tumor and the cut edge of the specimen under a microscope.

Results

Characteristics of patients

For all 110 patients, most patients were men (93.6%, 103/110), and 93 patients (84.5%) had a history of betel nut chewing. The treatment modalities were as follows: surgery alone (S), 29.1% (32/110); surgery plus post-operative RT (S + RT), 34.5% (38/110); and, surgery plus CCRT (S + CCRT), 36.4% (40/110). Table 1 shows the characteristics of the study participants and their tumors, and Table 2 shows the cancer stage distribution. After surgery, 56 patients had pathological stage I-II disease and 54 patients had stage III-IV disease. The incidences of neck nodal involvement were: 24% in all 110 patients, 20.0% in 70 pT1-2 patients, and 30% in 40 pT3-4 patients.

Table 1 Characteristics of 110 patients with buccal mucosa carcinoma

Variable	Number of patients	%
Age		
≤50	44	40.0
>50	66	60.0
Gender		
Male	103	93.6
Female	7	6.4
pT		
pT1-2	70	63.6
pT3-4	40	36.4
pN		
pN0	84	76.4
pN1-3	26	23.6
Pathology stage		
I-II	56	50.9
III-IV	54	49.1
Histologic differentiation		
Well	6	5.5
Moderately	90	81.8
Poorly	12	10.9
NOS	2	1.8
Surgical margin		
Positive	6	5.5
Negative	104	94.5
Treatment		
S	32	29.1
S+RT	38	34.5
S+CCRT	40	36.4
Smoking		
No	16	14.5
Yes	93	84.5
Unknown	1	1.0
Betel nut chewing		
No	15	13.6
Yes	93	84.5
Unknown	2	1.8

Abbreviations: S, surgery alone; S+RT, surgery+radiotherapy; S + CCRT, surgery + concurrent chemoradiotherapy; NOS, not otherwise specified.

Table 2 Stage distribution in 110 patients with buccal mucosa carcinoma, n (%)

Pathology stage (n, %)		pN0	pN1	pN2	pN3
I (25, 22.7%)	pT1	25 (22.7)	1 (0.9)	1 (0.9)	0
II (31, 28.2%)	pT2	31 (28.2)	0	12 (10.9)	0
III (11, 10.0%)	pT3	9 (8.2)	1 (0.9)	4 (3.6)	0
IV (43, 39.1%)	pT4	19 (17.3)	2 (1.8)	5 (4.5)	0

Locoregional control and survival

The median follow-up time was 25 months (range, 4-104 months). The mean age was 53.7 years (range, 26-82 years). Surgical margin affected locoregional control: the narrower the surgical margin, the greater the difference in locoregional control after treatment (Figures 1, 2, 3 and 4; Table 3). Patients with surgical margin ≤3 mm had a statistically significantly higher risk for locoregional failure than those with surgical margin more than 3 mm; the 3-year locoregional control rates were 71% and 95%, respectively ($p = 0.04$). In multivariate analysis, surgical margin had a quantitative effect on locoregional control (hazard ratio [HR], 2.16; 95% confidence interval [CI], 1.14 - 4.11).

For all patients, the rates of 3-year locoregional control, disease-free survival, disease-specific survival, distant metastasis-free survival, and overall survival were 73%, 70%, 84%, 96%, and 82%, respectively.

Prognostic factors

For univariate analysis, pathology stage, pN classification, surgical margin, and nodal extracapsular spreading (ECS) were significantly associated with survival (Table 4). The pN classification and surgical margin also significantly affected locoregional control. The pN classification (pN0 versus pN1-3) and surgical margin (≤2 versus >2 mm) were the two most significant factors affecting clinical outcome. However, for surgical margin (cut off at 3 mm), the statistical significance of its association with locoregional control was only found at the clinical end point of 3 years.

In multivariate analysis, both pN classification and surgical margin independently affected disease-free survival and locoregional control. Furthermore pN classification also affected overall and disease-specific survivals (Table 5).

Discussion

Synopsis of key findings

In this study, two major findings indicated that surgical margin ≤3 mm, not 5 mm, was a useful pathological parameter for predicting locoregional recurrence in patients with buccal mucosa carcinoma treated surgically. First, the 3-year locoregional control rates were significantly different at the cut-off value of 3 mm (≤3 versus >3 mm, 71% versus 95%, $p = 0.04$), but not at 5 mm (75% versus 92%, $p = 0.22$). Second, we found a quantitative correlation between surgical margin and locoregional failure (HR, 2.16; 95% C.I., 1.14 - 4.11; $p = 0.019$), which suggested that every 1 mm decrease in surgical margin significantly increased the rate of locoregional failure by 116%.

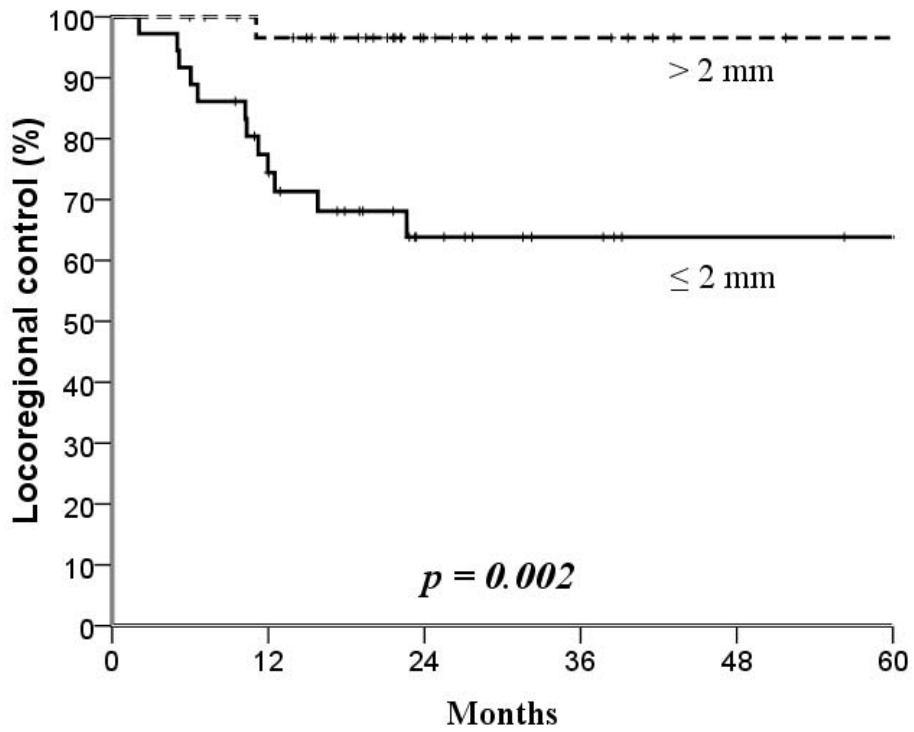


Figure 1 Kaplan-Meier estimates of locoregional control over a 5-year period according to 2 mm cut-off surgical margins.

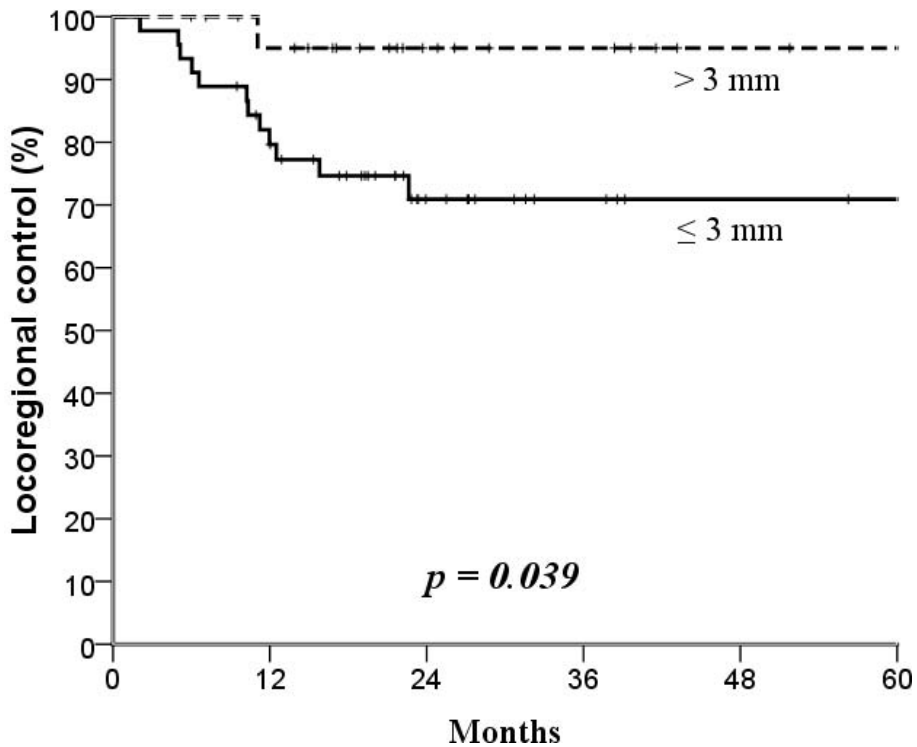


Figure 2 Kaplan-Meier estimates of locoregional control over a 5-year period according to 3 mm cut-off surgical margins.

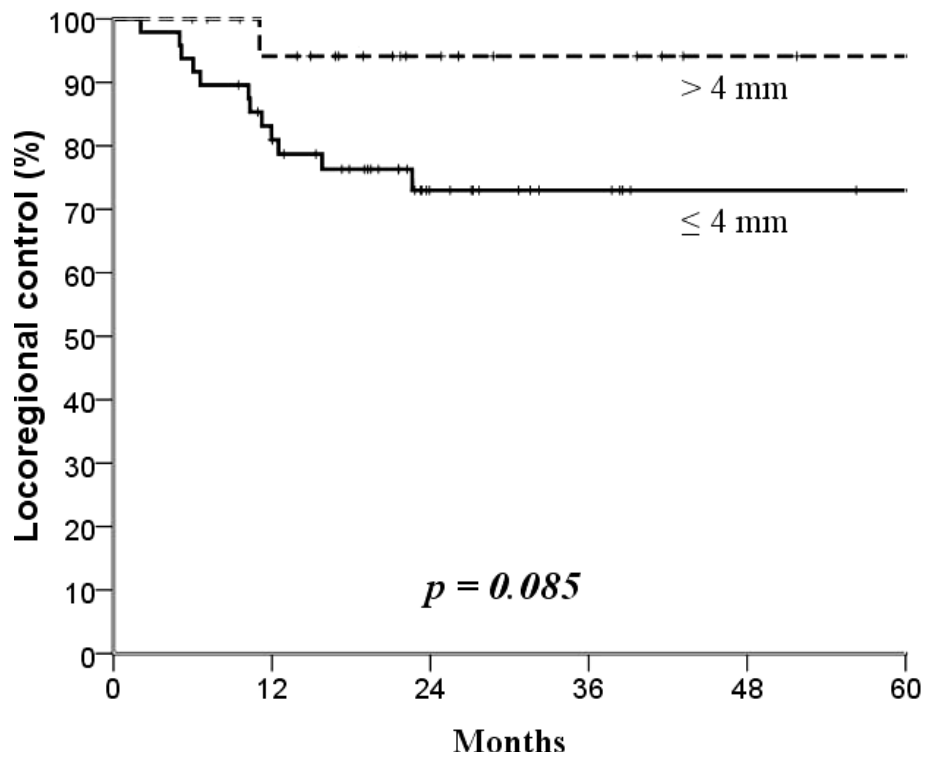


Figure 3 Kaplan-Meier estimates of locoregional control over a 5-year period according to 4 mm cut-off surgical margins.

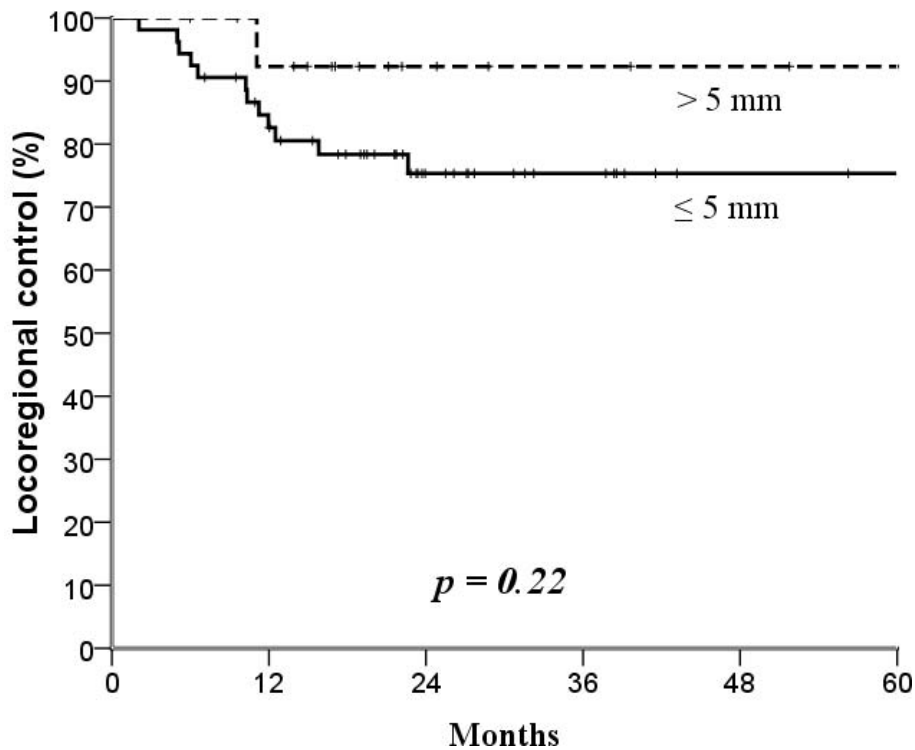


Figure 4 Kaplan-Meier estimates of locoregional control over a 5-year period according to 5 mm cut-off surgical margins.

Table 3 The 3-year disease-free survival and locoregional control according to surgical margins

Surgical margin	Disease-free survival (%)	<i>p</i>	Locoregional control (%)	<i>p</i>
1 mm				
≤1 mm	56	0.02*	59	<0.01*
>1 mm	77		81	
HR, univariate	0.4 (95% CI, 0.19-0.86)	0.02	0.4 (95% CI, 0.16-0.80)	0.01
HR, multivariate	0.2 (95% CI, 0.06-0.72)	0.02	0.2 (95% CI, 0.05-0.67)	0.01
2 mm				
≤2 mm	59	<0.01*	64	<0.01*
>2 mm	93		97	
HR, univariate	0.1 (95% CI, 0.03-0.62)	<0.01	0.1 (95% CI, 0.01-0.64)	0.02
HR, multivariate	0.1 (95% CI, 0.01-0.60)	0.01	0.1 (95% CI, 0.01-0.72)	0.02
3 mm				
≤3 mm	67	0.06*	71	0.04*
>3 mm	91		95	
HR, univariate	0.3 (95% CI, 0.06-1.16)	0.08	0.2 (95% CI, 0.02-1.19)	0.07
HR, multivariate	0.2 (95% CI, 0.03-1.86)	0.17	0.3 (95% CI, 0.03-2.12)	0.21
4 mm				
≤4 mm	69	0.13*	73	0.09*
>4 mm	89		94	
HR, univariate	0.3 (95% CI, 0.08-1.49)	0.15	0.2 (95% CI, 0.03-1.53)	0.12
HR, multivariate	0.3 (95% CI, 0.04-2.16)	0.22	0.3 (95% CI, 0.04-2.52)	0.28
5 mm				
≤5 mm	72	0.36*	75	0.22*
>5 mm	86		92	
HR, univariate	0.5 (95% CI, 0.12-2.22)	0.37	0.3 (95% CI, 0.04-2.30)	0.25
HR, multivariate	0.5 (95% CI, 0.07-4.22)	0.56	0.6 (95% CI, 0.08-4.80)	0.63

Abbreviation: HR, hazard ratio; 95% CI, 95% confidence interval.

*, *p* values were calculated by using Kaplan-Meier method; other non-specified *p* values were calculated by using Cox proportional hazard regression.

Clinical applicability and comparison with other studies

For patients with buccal mucosa carcinoma and positive surgical margins, postoperative clinical outcome is poor [18,19]. For patients with close surgical margins, the risk for cancer recurrence is high [12,13,15]. However, how many millimeters between the tumor and edge of the specimen define a close surgical margin? More importantly, can this definition be used to make a treatment recommendation after surgery? The answers to these questions are still controversial. A previous study suggested 3 mm was adequate to reduce the risk of cancer recurrence [12], but most studies recommended 5 mm [13-15]. In our study, surgical margin ≤3 mm tightly associated with high locoregional recurrence rate in patients with buccal mucosa carcinoma. Considering survival as the endpoint, overall survival was significantly poorer in patients with surgical margin ≤2 mm than in those with margin >2 mm (Table 4). In our study, we also adjusted treatment modality. The treatment results did not have significant difference. For a close margin of ≤3 mm, more effective and safe drugs, re-surgery or higher doses of radiotherapy should be considered into multi-modal treatment strategy.

Thus, we would suggest that *for locoregional control*, surgical margin of 3 mm, not 5 mm, may be a suitable cut-off point to use for post-operative adjuvant therapy decision making; however, *for survival*, surgical margin of 2 mm may be the cut-off point at which stronger post-operative treatment is recommended.

Several other post-operative prognostic factors were evaluated in our study. In agreement with other studies [9,19-21], our study found that pN classification was the most important prognostic factor for both survival and locoregional control. The 3-year overall survival and locoregional control rates in patients with pN0 and pN1-3 diseases were 96%/33% and 81%/46%, respectively (both *p* values < 0.001; Tables 4 and 5), suggesting that intense post-operative adjuvant therapy should be given to patients with pN1-3 disease, and CCRT with or without targeted therapy in a clinical trial setting should be considered.

ECS of involved lymph nodes has been found to be a poor prognostic factor. Patients with both ECS and a positive surgical margin had significantly poorer overall survival than those without these risk factors [10,11,15]. In our study, ECS significantly associated with poor survival only in univariate but not in multivariate analysis.

Table 4 The 3-year clinical outcomes according to prognostic factors

Factor	Overall survival (%)	<i>p</i>	Disease-specific survival (%)	<i>p</i>	Disease-free survival (%)	<i>p</i>	Locoregional control (%)	<i>p</i>	Distant metastasis-free survival (%)	<i>p</i>
Age										
≤50/ >50	78/85	0.61	78/89	0.24	66/72	0.59	72/74	0.97	93/98	0.18
Gender										
Male/ Female	84/51	0.1	86/60	0.32	71/42	0.51	74/56	0.9	97/80	0.14
pT										
pT1-2/ pT3-4	87/75	0.08	89/79	0.15	72/66	0.65	73/73	0.88	98/92	0.13
pN										
pN0/ pN1-3	96/33*	a	98/34*	a	81/32*	a	81/46*	a	100/79*	A
Pathology stage										
I-II/III-IV	98/66*	a	100/69*	a	81/58*	0.01	81/65	0.07	100/92*	0.04
Grade										
1/2+3	83/81	0.99	100/83	0.35	100/67	0.17	100/71	0.2	100/96	0.63
Surgical margin										
(+)/(-)	63/83	0.26	63/86	0.16	44/71	0.21	44/75	0.12	100/96	0.63
≤2/>2 (mm)	64/94*	0.02	66/97*	0.01	59/93*	b	64/97*	b	91/97	0.37
≤3/>3 (mm)	70/91	0.18	71/95	0.09	67/91	0.06	71/95*	0.04	93/95	0.74
ECS										
(+)/(-)	25/77*	a	33/77*	b	50/71*	0.01	75/73	0.62	75/76	0.02
PNI										
(+)/(-)	72/85	0.23	72/80	0.15	64/71	0.32	73/73	0.64	91/96	0.41
Bone invasion										
(+)/(-)	85/91	0.2	85/91	0.2	55/70	0.46	55/74	0.3	100/98	0.63
Skin invasion										
(+)/(-)	76/94	0.19	82/94	0.48	56/64	0.78	67/64	0.27	84/100	0.05

*, Statistically significant difference; a, *p* < 0.001; b, *p* < 0.01; PNI, perineural invasion; ECS, extracapsular spread; (+), positive; (-), negative.

Table 5 Prognostic factors affecting clinical outcome in multivariate analysis

Factor	HR (95% CI)	<i>p</i>
Overall survival		
Nodal status (pN0 vs. pN1-3)	27.1 (3.19-229.32)	<0.01
Disease-specific survival		
Nodal status (pN0 vs. pN1-3)	28.3 (3.33-241.53)	<0.01
Disease-free survival		
Nodal status (pN0 vs. pN1-3)	7.3 (2.11-25.44)	<0.01
Surgical margin (≤2 mm vs. >2 mm)	0.1 (0.01-0.60)	0.02
Locoregional control		
Nodal status (pN0 vs. pN1-3)	5.9 (1.59-21.92)	<0.01
Surgical margin (≤2 mm vs. >2 mm)	0.1 (0.01-0.72)	0.02

Abbreviations: HR, hazard ratio; 95% CI, 95% confidence interval.

Strengths of this study

The main strength of this study is that the medical and surgical records were complete and the pathologies were well defined for all 110 patients included with buccal mucosa carcinoma treated with radical surgery; the homogeneity of this study population increases the clinical applicability of our results to such patients.

Limitations of this study

This study had two main limitations: a retrospective design and small number of cases. Thus, the conclusions of this study should be confirmed by further investigations. Despite these limitations, our data showed that a surgical margin of more than 3 mm may be relatively

safe margin in patients surgically-treated for buccal mucosa carcinoma.

Conclusion

More aggressive post-operative therapy is suggested for patients with buccal mucosa carcinoma excised with a close margin of ≤ 3 mm.

Author details

¹Department of Radiation Oncology, Buddhist Dalin Tzu Chi General Hospital, Chiayi, Taiwan. ²School of Medicine, Tzu Chi University, Hualien, Taiwan. ³Department of Otolaryngology, Buddhist Dalin Tzu Chi General Hospital, Chiayi, Taiwan. ⁴Department of Hematological Oncology, Buddhist Dalin Tzu Chi General Hospital, Chiayi, Taiwan. ⁵Department of Radiation Oncology, Far Eastern Memorial Hospital, Taipei, Taiwan. ⁶Department of Radiation Oncology, China Medical University Hospital, Taichung, Taiwan. ⁷School of Medicine, Graduate Institute of clinical Medical Science, China Medical University, Taichung, Taiwan.

Authors' contributions

CWY, WYC and HSK developed the ideas for these experiments, performed much of the work, and drafted the manuscript. LHY, HFC, LMS, HHC, HCH and SYC designed the study, collected the data and interpreted the data. LCC performed the statistical analysis. All authors read and approved the final manuscript.

Competing interests

The authors declare that they have no competing interests.

Received: 11 June 2010 Accepted: 15 September 2010

Published: 15 September 2010

References

1. Franceschi S, Talamini R, Barra S, Baron AE, Negri E, Bidoli E, Serraino D, La Vecchia C: Smoking and drinking in relation to cancers of the oral cavity, pharynx, larynx, and esophagus in northern Italy. *Cancer Res* 1990, **50**:6502-6507.
2. Lin LM, Chen YK, Lai DR, Huang YL, Chen HR: Cancer-promoting effect of Taiwan betel quid in hamster buccal pouch carcinogenesis. *Oral Dis* 1997, **3**:232-235.
3. Lin YS, Jen YM, Wang BB, Lee JC, Kang BH: Epidemiology of oral cavity cancer in taiwan with emphasis on the role of betel nut chewing. *ORL J Otorhinolaryngol Relat Spec* 2005, **67**:230-236.
4. Lapeyre M, Peiffert D, Malissard L, Hoffstetter S, Pernot M: An original technique of brachytherapy in the treatment of epidermoid carcinomas of the buccal mucosa. *Int J Radiat Oncol Biol Phys* 1995, **33**:447-454.
5. Strome SE, To W, Strawderman M, Gersten K, Devaney KO, Bradford CR, Esclamado RM: Squamous cell carcinoma of the buccal mucosa. *Otolaryngol Head Neck Surg* 1999, **120**:375-379.
6. Hinerman RW, Mendenhall WM, Morris CG, Amdur RJ, Werning JW, Villaret DB: Postoperative irradiation for squamous cell carcinoma of the oral cavity: 35-year experience. *Head Neck* 2004, **26**:984-994.
7. Cherian T, Sebastian P, Ahamed MI, Jayakumar KL, Sivaramakrishnan P, Jeevy G, Sankaranarayanan R, Nair MK: Evaluation of salvage surgery in heavily irradiated cancer of the buccal mucosa. *Cancer* 1991, **68**:295-299.
8. Mishra RC, Singh DN, Mishra TK: Post-operative radiotherapy in carcinoma of buccal mucosa, a prospective randomized trial. *Eur J Surg Oncol* 1996, **22**:502-504.
9. Lin CS, Jen YM, Cheng MF, Lin YS, Su WF, Hwang JM, Chang LP, Chao HL, Liu DW, Lin HY, Shum WY: Squamous cell carcinoma of the buccal mucosa: an aggressive cancer requiring multimodality treatment. *Head Neck* 2006, **28**:150-157.
10. Bernier J, Dommange C, Ozsahin M, Matuszewski K, Lefebvre JL, Greiner RH, Giralt J, Maingon P, Rolland F, Bolla M, et al: Postoperative irradiation with or without concomitant chemotherapy for locally advanced head and neck cancer. *N Engl J Med* 2004, **350**:1945-1952.
11. Cooper JS, Pajak TF, Forastiere AA, Jacobs J, Campbell BH, Saxman SB, Kish JA, Kim HE, Cmelak AJ, Rotman M, et al: Postoperative concurrent

12. Nason RW, Binahmed A, Pathak KA, Abdoh AA, Sandor GK: What is the adequate margin of surgical resection in oral cancer? *Oral Surg Oral Med Oral Pathol Oral Radiol Endod*. 2009, **107**:625-629.
13. Brandwein-Gensler M, Teixeira MS, Lewis CM, Lee B, Rolnitzky L, Hille JJ, Genden E, Urken ML, Wang BY: Oral squamous cell carcinoma: histologic risk assessment, but not margin status, is strongly predictive of local disease-free and overall survival. *Am J Surg Pathol* 2005, **29**:167-178.
14. Meier JD, Oliver DA, Varvares MA: Surgical margin determination in head and neck oncology: current clinical practice. The results of an International American Head and Neck Society Member Survey. *Head Neck* 2005, **27**:952-958.
15. Bernier J, Cooper JS, Pajak TF, van Glabbeke M, Bourhis J, Forastiere A, Ozsahin EM, Jacobs JR, Jassem J, Ang KK, Lefebvre JL: Defining risk levels in locally advanced head and neck cancers: a comparative analysis of concurrent postoperative radiation plus chemotherapy trials of the EORTC(#22931) and RTOG (# 9501). *Head Neck* 2005, **27**:843-850.
16. Greene FL, Page DL, Fleming ID, AG F: *AJCC Cancer Staging Manual*. New York: Springer-Verlag 2002, 23-32.
17. DCTD, NCI, NIH, DHHS: *Cancer Therapy Evaluation Program Common Toxicity Criteria, Version 2.0*. 1999, 1-32.
18. Fang FM, Leung SW, Huang CC, Liu YT, Wang CJ, Chen HC, Sun LM, Huang DT: Combined-modality therapy for squamous carcinoma of the buccal mucosa: treatment results and prognostic factors. *Head Neck* 1997, **19**:506-512.
19. Lin CY, Lee LY, Huang SF, Kang CJ, Fan KH, Wang HM, Chen EY, Chen IH, Liao CT, Cheng AJ, Chang JT: Treatment outcome of combined modalities for buccal cancers: unilateral or bilateral neck radiation? *Int J Radiat Oncol Biol Phys* 2008, **70**:1373-1381.
20. Diaz EM Jr, Holsinger FC, Zuniga ER, Roberts DB, Sorensen DM: Squamous cell carcinoma of the buccal mucosa: one institution's experience with 119 previously untreated patients. *Head Neck* 2003, **25**:267-273.
21. Ghoshal S, Mallick I, Panda N, Sharma SC: Carcinoma of the buccal mucosa: analysis of clinical presentation, outcome and prognostic factors. *Oral Oncol* 2006, **42**:533-539.

doi:10.1186/1748-717X-5-79

Cite this article as: Chiou et al.: Buccal mucosa carcinoma: surgical margin less than 3 mm, not 5 mm, predicts locoregional recurrence. *Radiation Oncology* 2010 **5**:79.

Submit your next manuscript to BioMed Central and take full advantage of:

- Convenient online submission
- Thorough peer review
- No space constraints or color figure charges
- Immediate publication on acceptance
- Inclusion in PubMed, CAS, Scopus and Google Scholar
- Research which is freely available for redistribution

Submit your manuscript at
www.biomedcentral.com/submit

