

RESEARCH

Open Access

Alterations in hippocampal serotonergic and INSR function in streptozotocin induced diabetic rats exposed to stress: neuroprotective role of pyridoxine and *Aegle marmelose*

Pretty Mary Abraham, Korah P Kuruvilla, Jobin Mathew, Anitha Malat, Shilpa Joy, CS Paulose*

Abstract

Diabetes and stress stimulate hippocampal 5-HT synthesis, metabolism and release. The present study was carried out to find the effects of insulin, *Aegle marmelose* alone and in combination with pyridoxine on the hippocampal 5-HT, 5-HT_{2A} receptor subtype, gene expression studies on 5-HT_{2A}, 5-HTT, INSR, immunohistochemical studies and elevated plus maze in streptozotocin induced diabetic rats. 5-HT content showed a significant decrease ($p < 0.001$) and a significant increase ($p < 0.001$) in 5-HIAA in hippocampus of diabetic rats compared to control. 5-HT receptor binding parameters B_{max} and K_d showed a significant decrease ($p < 0.001$) whereas 5-HT_{2A} receptor binding parameters B_{max} showed a significant decrease ($p < 0.001$) with a significant increase ($p < 0.05$) in K_d in hippocampus of diabetic rats compared to control. Gene expression studies of 5-HT_{2A}, 5-HTT and INSR in hippocampus showed a significant down regulation ($p < 0.001$) in diabetic rats compared to control. Pyridoxine treated in combination with insulin and *A. marmelose* to diabetic rats reversed the 5-HT content, B_{max} , K_d of 5-HT, 5-HT_{2A} and gene expression of 5-HT_{2A}, 5-HTT and INSR in hippocampus to near control. The gene expression of 5-HT_{2A} and 5-HTT were confirmed by immunohistochemical studies. Behavioural studies using elevated plus maze showed that serotonin through its transporter significantly increased ($p < 0.001$) anxiety-related traits in diabetic rats which were corrected by combination therapy. Our results suggest that pyridoxine treated in combination with insulin and *A. marmelose* has a role in the regulation of insulin synthesis and release, normalising diabetic related stress and anxiety through hippocampal serotonergic function. This has clinical significance in the management of diabetes.

Background

Diabetes is associated with several adverse effects on the brain, which results primarily from direct consequences of chronic hyperglycemia. Diabetes induces impairments in hippocampal synaptic plasticity, neurogenesis and associated cognitive deficits. Intrahippocampal insulin [1] or activation of insulin signalling pathways [2] block the effects of stress on learning and memory. In control rats, hippocampus dependent learning is correlated with a decrease in extracellular glucose, and intrahippocampal injection of glucose improves performance [3]. Learning-induced changes

in hippocampal glucose metabolism have been demonstrated in diabetic rats [4]. Hippocampus is particularly susceptible to the negative consequences of diabetes [5]. Individuals with diabetes suffer from reduced motor activity and are at increased risk of dementia and cognitive dysfunction [6]. 5-HT innervations of the hippocampus originate from the raphe nuclei in the midbrain [7]. 5-HT is released into the extracellular space and *via* synapses [8]. Direct effects of 5-HT on principal cells occur through its release in extracellular space. 5-HT_{2A} receptors are involved in a diversity of physiological functions such as the control of nociception, motor behaviour, endocrine secretion, thermoregulation and modulation of appetite [9].

There is a need to explore diabetes and its complications to reduce the mechanisms by which oxidative

* Correspondence: cspaulose@cusat.ac.in

Molecular Neurobiology and Cell Biology Unit, Centre for Neuroscience,
Department of Biotechnology, Cochin University of Science and Technology,
Cochin- 682 022, Kerala, India

stress develop diabetic complications. In an effort to expand the treatment, *Aegle marmelose* (L.) Correa ex Roxb. an ayurvedic medicinal tree, growing throughout the deciduous forest of India is reported to have anti-diabetic effect in rats. In the brain, L-tryptophan is converted to 5-HT in the presence of the co-enzyme pyridoxine [10]. 5-HT decrease has been reported in hypothyroidism and hypertension [9,11]. Pyridoxine supplementation is used for cognitive impairment or dementia [12].

In the current study, the effect of leaf extract of *Aegle marmelose* and insulin alone and in combination with pyridoxine in diabetic rats on the hippocampal 5-HT through 5HT_{2A} receptor subtype - 5HT_{2A}, 5-HTT and INSR gene expression and immunohistochemical studies using confocal microscope was carried out. Behavioural studies using elevated plus maze was also done to elucidate the anxiety-related traits in these rats.

Materials and methods

Animals

Adult Male Wistar rats 200 - 250 g body weight were purchased from Amrita Institute of Medical Sciences, Cochin and used for all experiments. They were housed in separate cages under 12 hours light and 12 hours dark periods and were maintained on standard food pellets, water *ad libitum* and room temperature. They were housed for 1 to 2 weeks before experiments were performed. All animal care and procedures were in accordance with Institutional and National Institute of Health guidelines.

Induction of Diabetes

The animals were randomly divided into control (C), diabetic (D), insulin treated diabetic (D+I), diabetic treated with insulin + pyridoxine (DIP), diabetic treated with pyridoxine alone (D+P), diabetic treated with *Aegle marmelose* (D+A) and diabetic treated with *Aegle marmelose* + pyridoxine (DAP). Each group consisted of 6-8 animals. Values are mean \pm S.E.M of 4-6 rats in each group. Diabetes was induced by a single intrafemoral dose (55 mg/kg body weight) of streptozotocin prepared in citrate buffer, pH 4.5 [13]. The D+I and DIP groups received a daily dose (1 Unit/kg body weight) of Lente and Plain insulin. Pyridoxine injected was 100 mg/kg body weight [14]. Aqueous extract of *Aegle marmelose* was given orally in the dosage of 1 g/Kg body weight [15] at 24 hour intervals. The experimental rats were sacrificed by decapitation after 15 days treatment. The hippocampus was dissected out quickly over ice according to the procedure of [16]. The tissues were stored at -80°C until assay. Glucose was measured by GOD-POD glucose estimation kit (Biolab Diagnostics Pvt. Ltd).

Plant material and Preparation of extract

Specimen of *Aegle marmelose* were collected and voucher specimens was deposited at herbarium of Centre for Neuroscience, Cochin University of Science and Technology, Cochin, Kerala, India. Fresh leaves of *Aegle marmelose* were air dried in shade and powdered. 10 g of leaf powder was mixed with 100 ml of distilled water and stirred for 2 hr. It was kept overnight at 4°C. The supernatant was collected and evaporated to dryness followed by lyophilization in Yamato, Neocool, Japan lyophilizer. This was used as the crude leaf extract to study the antidiabetic effect in streptozotocin induced diabetes.

Quantification of Serotonin

Serotonin content was assayed according to Paulose et al. [17]. The cerebral cortex and brain stem of the experimental groups of rats was homogenized in 0.4 N perchloric acid. The homogenate was centrifuged at 5000 \times g for 10 min at 4°C in a Sigma 3K30 refrigerated centrifuge and the clear supernatant was filtered through 0.22 μ m HPLC grade filters and used for HPLC analysis.

Serotonin (5-HT) and 5-hydroxy indole acetic acid (5-HIAA) contents were determined using high performance liquid chromatography integrated with an electrochemical detector (HPLC-ECD) (Waters, USA) fitted with CLC-ODS reverse phase column of 5 μ m particle size. The mobile phase consisted of 50 mM sodium phosphate dibasic, 0.03 M citric acid, 0.6 mM sodium octyl sulphonate, 0.1 mM EDTA and 15% methanol. The pH was adjusted to 3.25 with orthophosphoric acid, filtered through the 0.22 μ m filter (Millipore) and degassed. A Waters model 515, Milford, USA, pump was used to deliver the solvent at a rate of 1 ml/minute. The neurotransmitters and their metabolites were identified by amperometric detection using an electrochemical detector (Waters, model 2465) with a reduction potential of +0.80 V.

5-HT Receptor Binding Studies Using [³H]

5-Hydroxytryptamine

5-HT receptor assay was done using [³H] 5-hydroxytryptamine binding in crude synaptic membrane preparations of hippocampus by the modified method of [18]. Crude membrane preparation was suspended in 50 mM Tris-HCl buffer, pH 8.5, containing 1.0 μ M paralyline. The incubation mixture contained 0.3-0.4 mg protein. In the saturation binding experiments, assays were done using different concentrations i.e., 1.0 nM-30 nM of [³H] 5-HT was incubated with and without excess of unlabelled 10 μ M 5-HT. Tubes were incubated at 37°C for 15 min. and filtered rapidly through GF/B filters (Whatman). The filters were washed quickly by three

successive washing with 5.0 ml of ice cold 50 mM Tris buffer, pH 8.5. Bound radioactivity was counted with cocktail-T in a Wallac 1409 liquid scintillation counter.

5-HT_{2A} Receptor Binding Studies Using [³H] Ketanserin

5-HT_{2A} receptor assay was done using [³H] Ketanserin binding in crude synaptic membrane preparations of hippocampus by the modified method of [19]. Crude membrane preparation was suspended in 50 mM Tris-HCl buffer, pH 7.6. The incubation mixture contained 0.3-0.4 mg protein. In the saturation binding experiments using different concentrations i.e., 0.1 nM - 2.5 nM of [³H] Ketanserin was incubated with and without excess of unlabelled 10 μM Ketanserin. Tubes were incubated at 37°C for 15 minutes and filtered rapidly through GF/B filters (Whatman). The filters were washed quickly by three successive washing with 5.0 ml of ice cold 50 mM Tris buffer, pH 7.6. Bound radioactivity was counted with cocktail-T in a Wallac 1409 liquid scintillation counter. Protein was measured by the method of Lowry et al. [20] using bovine serum albumin as standard.

Receptor data analysis

The data were analysed according to Scatchard [21]. The binding parameters, maximal binding (B_{max}) and equilibrium dissociation constant (K_d), were derived by linear regression analysis.

Real -Time PCR Assay using 5-HT_{2A}, 5-HTT and INSR

RNA was isolated from the hippocampus of experimental rats using the Tri reagent (MRC, USA). Total cDNA synthesis was performed using ABI PRISM cDNA archive kit in 0.2 ml microfuge tubes. The reaction mixture of 20 μl contained 0.2 μg total RNA, 10 × RT buffer, 25 × dNTP mixture, 10 × random primers, MultiScribe RT (50 U/μl) and RNase free water. The cDNA synthesis reactions were carried out at 25°C for 10 minutes and 37°C for 2 hours using an Eppendorf Personal Cycler. Total cDNA synthesis was performed using ABI PRISM cDNA Archive kit. Real-Time PCR assays were performed in 96-well plates in ABI 7300 Real-Time PCR instrument (Applied Biosystems). PCR analyses were conducted with gene-specific primers and fluorescently labelled Taqman 5-HT receptor subtype (5HT_{2A}; Rn01468302_m1), 5-HT transporter (5HTT; Rn00564737_m1) and Insulin receptor (INSR; Rn00567070)) (designed by Applied Biosystems). Endogenous control (β-actin) was labelled with a report dye (VIC). The real-time data were analyzed with Sequence Detection Systems software version 1.7. All reactions were performed in duplicate.

The $\Delta\Delta CT$ method of relative quantification was used to determine the fold change in expression. This was

done by first normalizing the resulting threshold cycle (CT) values of the target mRNAs to the CT values of the internal control β-actin in the same samples ($\Delta CT = CT_{Target} - CT_{\beta-actin}$). It was further normalized with the control ($\Delta\Delta CT = \Delta CT - CT_{Control}$). The fold change in expression was then obtained ($2^{-\Delta\Delta CT}$).

5-HT_{2A} and 5-HTT Expression Studies in the Hippocampus of control and experimental rats using confocal microscope

Control and experimental rats were anesthetized with ether. The rat was transcardially perfused with PBS, pH 7.4, followed by 4% paraformaldehyde in PBS [22]. After perfusion the brains were dissected and immersion fixed in 4% paraformaldehyde for 1 hr and then equilibrated with 30% sucrose solution in 0.1 M PBS, pH 7.0. 40 μm sections were cut using Cryostat (Leica, CM1510 S). The sections were treated with PBST (PBS in 0.01% Triton X-100) for 20 min. Brain slices were incubated overnight at 4°C with either rat primary antibody for 5-HT_{2A} (No: RA24288 BD Pharmingen™, diluted in PBST at 1: 500 dilution) and 5HTT (No: AB9726 Chemicon Temecula, diluted in PBST at 1: 500 dilution). After overnight incubation, the brain slices were rinsed with PBST and then incubated with appropriate secondary antibody of either FITC (No: AB7130F, Chemicon, diluted in PBST at 1: 1000). The sections were observed and photographed using confocal imaging system (Leica SP 5).

Elevated plus maze

The elevated plus-maze is a widely used animal model of anxiety that is based on two conflicting tendencies; the rodents drive to explore a novel environment and its aversion to heights and open spaces. Four arms were arranged in the shape of a cross. Two arms had side walls and an end wall ("closed arms") - the two other arms had no walls ("open arms"). The open arms were surrounded by small ledges to prevent the animal from falling from the maze. The maze was fastened to a light-weight support frame. Thus "anxious" animals spent most of the time in the closed arms while less anxious animals explored open areas longer.

Procedure

Animals were placed individually into the center of elevated plus-maze consisting of two open arms (38 L × 5 W cm) and two closed arms (38 L × 5 W × 15 H cm), with a central intersection (5 cm × 5 cm) elevated 50 cm above the floor. Behaviour was tested in a dimly lit room with a 40 W bulb hung 60 cm above the central part of the maze. The investigator sitting approximately 2 m apart from the apparatus observed and detected the movements of the rats for a total of 5 minutes. The experimental procedure was similar to that described by [23]. During the 5 min test period the following

parameters were measured to analyze the behavioural changes of the experimental rats using elevated plus-maze: open arm entry, closed arm entry, percentage arm entry, total arm entry, time spent in open arm, time spent in closed arm, percentage of time spent in open arm [24,25]. An entry was defined as entering with all four feet into one arm. A decrease in open arm entries and decrease in time spent in the open arms is indicative of anxiogenic activity shown by experimental rats.

Statistical Analysis

The equality of all the groups was tested by the analysis of variance (ANOVA) technique for different values of p. Further the pair wise comparisons of all the experimental groups were studied using Students-Newman-Keuls test at different significance levels. The testing was performed using GraphPad InStat (Ver. 2.04a, San Diego, USA) computer program.

Results

Estimation of blood glucose

Blood glucose level of all rats before streptozotocin administration was within the normal range. Streptozotocin administration led to a significant increase ($p < 0.001$) in blood glucose level of diabetic rats compared to control rats. Treatment with pyridoxine alone and in combination with *Aegle marmelose* and insulin in diabetic rats was able to significantly reduce ($p < 0.001$) the increased blood glucose level to near the control value compared to diabetic group (Figure-1).

Serotonin and Its Metabolites Content in Hippocampus of control and experimental rats

There was a significant decrease ($p < 0.001$) in 5-HT content in hippocampus of diabetic rats compared to control rats. The decreased 5-HT content was significantly reversed the D+P ($p < 0.01$), D+I ($p < 0.01$), DIP ($p < 0.001$), D+A ($p < 0.01$) and DAP ($p < 0.001$) to near control in diabetic rats treated with pyridoxine alone and in combination with insulin and *Aegle marmelose* leaf extract. The 5-HIAA in the hippocampus was significantly increased ($p < 0.001$) in diabetic rats compared to control. The increased 5-HIAA content was significantly reversed in D+P ($p < 0.01$), D+I ($p < 0.01$), DIP ($p < 0.001$), D+A ($p < 0.01$) and DAP ($p < 0.001$) to near control in diabetic rats treated with pyridoxine alone and in combination with insulin and *Aegle marmelose* leaf extract (Table-1).

5-HT and 5-HT_{2A} receptor binding in the hippocampus of control and experimental rats

Scatchard analysis using [³H] 5-HT binding against 5-HT showed that the B_{max} decreased significantly ($p < 0.001$) in the hippocampus of diabetic rats with significant increase ($p < 0.001$) in the affinity. Treatment with pyridoxine alone and in combination with *Aegle marmelose* and insulin in diabetic rats reversed the B_{max} and K_d to near control compared to diabetic group (Table-2, Figure-2a, b).

Scatchard analysis using [³H] Ketanserin binding against ketanserin showed that the B_{max} decreased

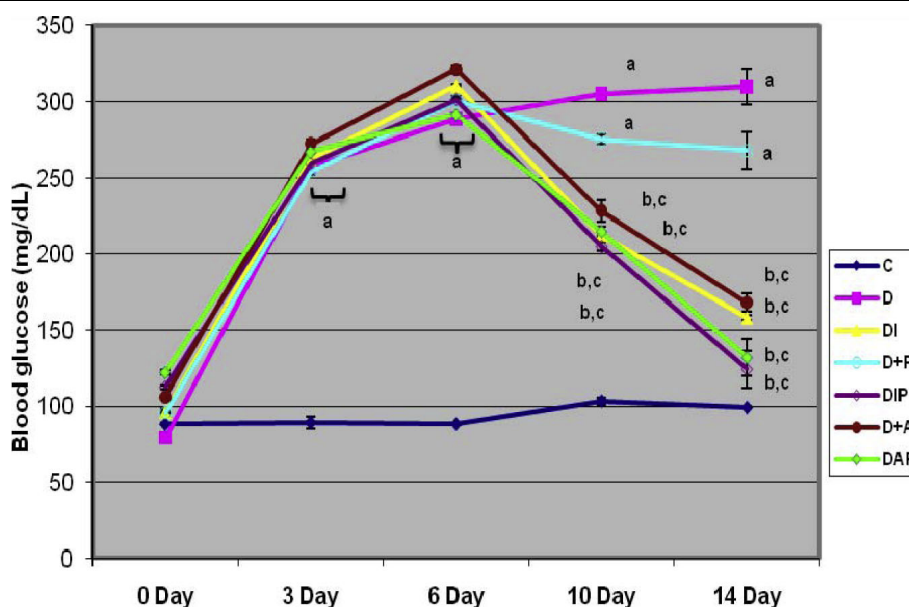


Figure 1 Representative graph showing Blood glucose (mg/dl) level in Control and Experimental rats. Values are mean \pm S.E.M of 4-6 rats in each group. Each group consists of 6-8 rats. ^a $p < 0.001$ when compared to control; ^b $p < 0.001$ when compared to diabetic group; ^c $p < 0.001$ when compared with initial reading.

Table 1 Serotonin and metabolites in the hippocampus of control and experimental rats

Experimental Groups	5-HT (nmoles/g wet wt. of tissue)	5HIAA (nmoles/g wet wt. of tissue)	5-HIAA/ 5-HT
Control	1.56 ± 0.27	1.94 ± 0.22	1.24 ± 0.23
Diabetic	0.89 ± 0.29 ^a	2.93 ± 0.31 ^a	3.29 ± 0.28 ^a
Diabetic+Insulin	1.07 ± 0.19 ^{a, b}	2.29 ± 0.20 ^{a, b}	2.14 ± 0.20 ^a
Diabetic+Pyridoxine	0.98 ± 0.33 ^{a, b}	2.91 ± 0.36 ^a	2.96 ± 0.33 ^a
Diabetic+Insulin+Pyridoxine	1.45 ± 0.35 ^c	1.53 ± 0.29 ^c	1.05 ± 0.31 ^c
Diabetic+A. <i>marmelose</i>	1.10 ± 0.23 ^{a, b}	2.73 ± 0.24 ^{a, b}	2.48 ± 0.21 ^a
Diabetic+A. <i>marmelose</i> +Pyridoxine	1.59 ± 0.22 ^c	1.66 ± 0.22 ^c	1.04 ± 0.21 ^c

Values are mean ± S.E.M of 4-6 separate experiments. Each group consists of 6-8 rats.

^a $p < 0.001$ when compared to control;

^b $p < 0.01$, ^c $p < 0.001$ when compared to diabetic group.

significantly ($p < 0.001$) in the hippocampus of diabetic rats with significant increase ($p < 0.001$) in the affinity. Treatment groups reversed the B_{max} of D+I ($p < 0.001$), DIP ($p < 0.001$), D+A ($p < 0.001$) and DAP ($p < 0.001$) to near control compared to diabetic group (Table-3, Figure-3a, b).

Real Time-PCR analysis of 5-HT_{2A}, 5-HTT and INSR receptor expression in the hippocampus of control and experimental rats

Real Time-PCR analysis showed that the 5-HT_{2A} and 5-HTT mRNA showed a significant down regulation ($p < 0.001$) in diabetic rats when compared to control and it was ($p < 0.001$) reversed to near control level on treatment with pyridoxine alone and in combination therapy with *Aegle marmelose* and insulin in diabetic rats (Figure-4, 5).

Real Time-PCR analysis showed that the INSR mRNA showed a significant down regulation ($p < 0.001$) in diabetic rats when compared to control and it was ($p < 0.001$) reversed to near control level on treatment with pyridoxine alone and in combination

therapy with *Aegle marmelose* and insulin in diabetic rats (Figure-6).

Elevated plus maze test in the control and experimental rats

(i) *Behavioural response in streptozotocin induced diabetic Rats: Effect of insulin and pyridoxine treatment on open and closed arm entry in elevated plus- maze test*

The experimental groups showed a significant increase in the attempt taken for open arm entry- D ($p < 0.001$) compared to C. D+I ($p < 0.001$), D+P ($p < 0.01$), DIP ($p < 0.001$), D+A ($p < 0.001$) and DAP ($p < 0.001$) treated groups showed the open arm entry to near control (Figure-7).

There was a significant increase ($p < 0.001$) in the number of entries made into closed arm by D compared to C. D+I ($p < 0.001$), D+P ($p < 0.01$), DIP ($p < 0.001$), D+A ($p < 0.001$) and DAP ($p < 0.001$) treated groups showed the open arm entry to near control (Figure-7, 8).

(ii) *Behavioural response in streptozotocin induced diabetic Rats: Effects insulin and pyridoxine treatment on time spent in open and closed arms in Elevated plus-maze test*

There was a significant decrease in time spent in open arm by D ($p < 0.001$) compared to C (Figure-7). Time spent in closed arm showed a significant increase in D ($p < 0.001$) when compared to C. D+I ($p < 0.001$), D+P ($p < 0.01$), DIP ($p < 0.001$), D+A ($p < 0.001$) and DAP ($p < 0.001$) treated groups showed the time spent in open and closed arms near to control (Figure-8).

5-HT_{2A} and 5-HTT antibody staining in control and experimental groups of rats

The 5-HT_{2A} receptor antibody staining in the hippocampus showed significant decrease ($p < 0.001$) in the 5-HT_{2A} receptor in diabetic rats compared to control. There was significant reversal of 5-HT_{2A} receptor to near control level in D+I ($p < 0.001$), D+P ($p < 0.05$), DIP ($p < 0.001$), D+A ($p < 0.001$) and DAP ($p < 0.001$)

Table 2 [³H] 5-Hydroxytryptamine binding parameters in the hippocampus of control and experimental rats

Experimental Groups	B_{max} (fmoles/mg protein)	K_d (nM)
Control	212.5 ± 2.11	3.22 ± 0.54
Diabetic	72.4 ± 3.21 ^a	1.94 ± 0.41 ^a
Diabetic + Insulin	62.8 ± 2.06 ^a	1.40 ± 0.29 ^a
Diabetic + Pyridoxine	148.4 ± 2.33 ^{a, c}	2.60 ± 0.49 ^b
Diabetic + Insulin+ Pyridoxine	196.0 ± 1.43 ^c	3.20 ± 0.17 ^c
Diabetic + A. <i>marmelose</i>	140.1 ± 4.33 ^{a, c}	2.57 ± 1.42 ^b
Diabetic + A. <i>marmelose</i> + Pyridoxine	186.4 ± 2.42 ^c	3.05 ± 1.31 ^c

Values are mean ± S.E.M of 6-8 separate experiments. Each group consists of 6-8 rats.

^a $p < 0.001$, ^b $p < 0.05$ when compared to control group; ^c $p < 0.001$ when compared to diabetic group.

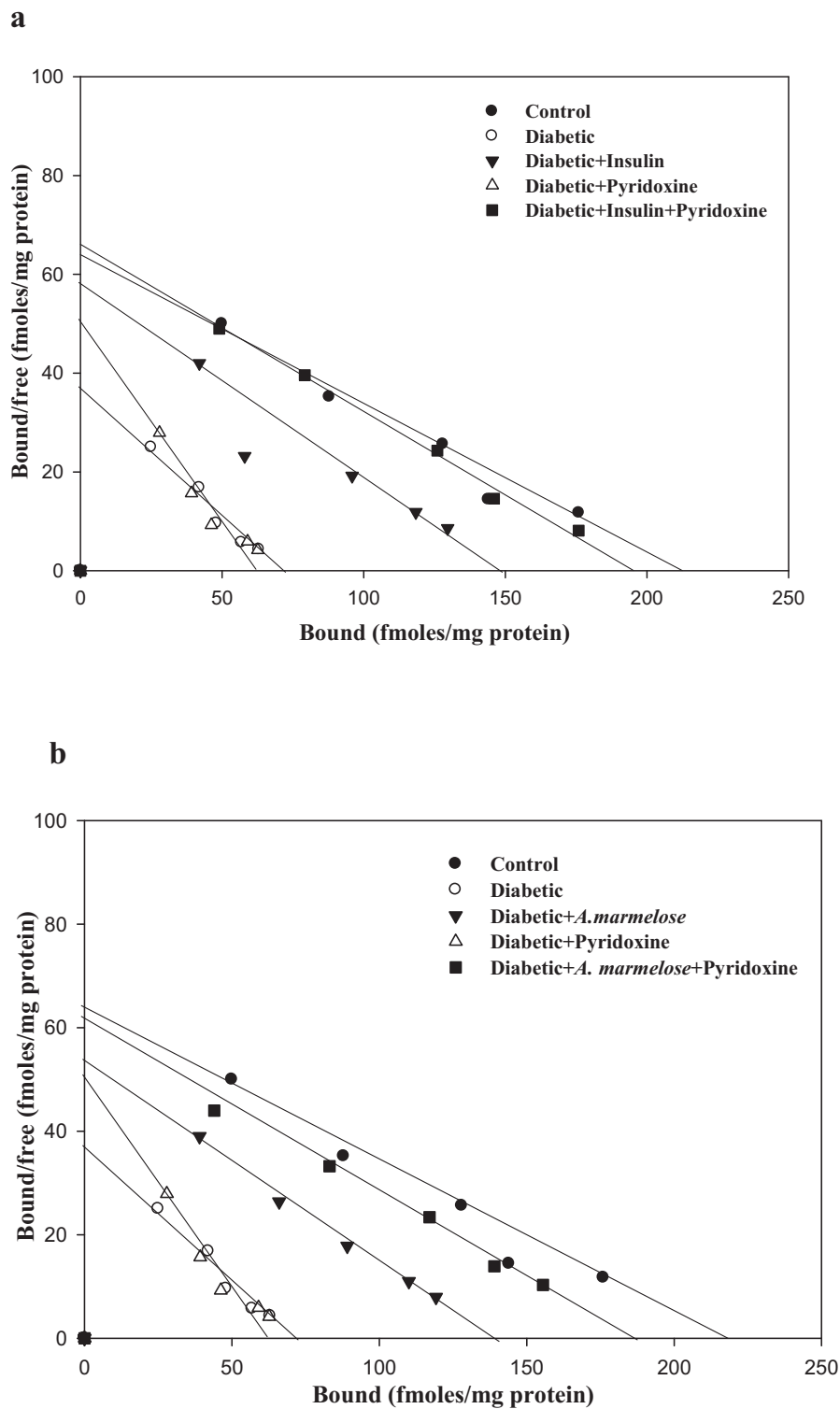


Figure 2 a, b Representative graph showing Scatchard analysis of [³H] 5-HT binding against 5-HT in the hippocampus of control and experimental rats. B_{max} – Maximal Binding (fmol/mg protein), K_d – dissociation constant (nM). Values are Mean \pm S.E.M. of 4-6 separate experiments. Each group consists of 6-8 rats. ^a $p < 0.001$, ^b $p < 0.05$ when compared to control group; ^c $p < 0.001$ when compared to diabetic group. Incubation was done with 1.0 nM-30 nM at 37 °C of [³H] 5-HT in a total incubation volume of 250 μ l. 10 μ M unlabelled 5-HT was used to determine the nonspecific binding. The reaction was stopped by rapid filtration through GF/B filters using ice cold Washing Buffer pH 8.5. Bound radioactivity was counted with cocktail-T in a Wallac 1409 liquid scintillation counter.

Table 3 [³H] Ketanserin binding parameters in the hippocampus of control and experimental rats

Experimental Groups	B _{max} (fmol/mg protein)	K _d (nM)
Control	260.5 ± 0.35	0.68 ± 0.08
Diabetic	176.2 ± 0.19 ^b	0.77 ± 0.17 ^a
Diabetic + Insulin	218.1 ± 0.32 ^d	0.67 ± 0.09 ^c
Diabetic + Pyridoxine	180.6 ± 0.27 ^b	0.70 ± 0.06 ^c
Diabetic + Insulin+ Pyridoxine	244.0 ± 0.26 ^d	0.68 ± 0.11 ^c
Diabetic+A. <i>marmelose</i>	209.3 ± 0.22 ^d	0.68 ± 0.11 ^c
Diabetic+ A. <i>marmelose</i> +Pyridoxine	228.2 ± 0.29 ^d	0.67 ± 0.07 ^c

Values are mean ± S.E.M of 6-8 separate experiments. Each group consists of 6-8 rats.

^a $p < 0.05$, ^b $p < 0.001$ when compared to control;

^c $p < 0.05$, ^d $p < 0.001$ when compared to diabetic group.

of 5-HT_{2A} receptors on treatment with pyridoxine alone and in combination therapy with insulin and *Aegle marmelose* compared to diabetic rats (Figure-9).

The 5-HTT antibody staining in the hippocampus showed significant decrease ($p < 0.001$) in the 5-HTT in diabetic rats compared to control. There was a significant reversal to near control level in expression of D+I ($p < 0.001$), DIP ($p < 0.001$), D+A ($p < 0.001$) and DAP ($p < 0.001$) of 5-HTT on treatment with insulin and *Aegle marmelose* alone and in combination therapy with insulin and *Aegle marmelose* compared to diabetic rat (Figure-10).

Discussion

Maintenance of euglycemia over a lifetime of diabetes cannot be accomplished safely with currently available treatment methods [26]. The effect of hyperglycemic episodes is visible in brain regions associated with memory, especially the hippocampus [27]. Increased blood glucose level observed during diabetes is similar with previous reports as a result of the marked destruction of insulin secreting pancreatic β -cells by streptozotocin [28]. Treatment normalised the increased blood glucose level to control. A decrease in the rate of 5-HT synthesis and changes in 5-HT neurotransmission have demonstrated to reduce 5-HT concentrations [29]. In the brain, serotonergic fibres acts on specific receptors to modulate the activity on autonomic pathways and affects energy expenditure regulated by 5-HT receptors. Serotonergic pathways also directly affect glucose homeostasis through regulation of autonomic efferents and action on peripheral tissues [30].

5-HT has both depolarising and hyperpolarizing effects in the hippocampus, *via* its different receptors. Activation of 5-HT_{2A} receptors found in the hippocampus has been suggested to induce depolarization in the dentate gyrus [31]. 5-HT_{2A} receptor has been found to

enhance Long term potentiation in the hippocampus [32]. The changes in brain 5-HT synthesis rate in diabetic rats are related to the various behavioural and psychological changes. The psychological changes observed in diabetes appear to persist even when the diabetic state is well-controlled with insulin administration [33].

Previous reports showed a decrease in 5-HT in brain regions during diabetes [29]. 5-HIAA/5-HT turnover ratio showed an increase in diabetes. In hippocampus, inactive decarboxylation reaction due to lack of pyridoxal phosphate decreased the conversion to 5-HT. Treatment of rats with moderate doses of pyridoxine results in an increment in brain 5-HT indicating that the tissue 5-HTP decarboxylation responds to the pyridoxine status of the animal [34]. Present study indicates a decreased 5-HT and 5-HT_{2A} receptor binding with increase in affinity in hippocampus of diabetic rats. This decrease in the sympathetic activity thereby decreases the circulating 5-HT level. Treatment of pyridoxine along with *Aegle marmelose* and insulin, resulted in restoring the synthesis of 5-HT in hippocampus of diabetic rats. 5-HT levels reflect the intrasynaptic release indicated by the response of the B_{max} of 5-HT receptor binding to its ligand. The results indicate that the pyridoxal phosphate content in hippocampus regulates the extent of decarboxylation of the 5-HTP, the precursor of 5-HT. Treatment of diabetic rats with pyridoxine reflected the synthesis and secretion into the synaptic cleft of the neurotransmitter 5-HT [35,36]. 5-HT synthesis is increased, possibly as a result of desensitization of receptors [37] and thereby modifying synthesis and release of 5-HT.

5-HTT regulates the entire serotonergic system and its receptors *via* modulation of its expression and function. In brain, 5-HTT is situated both in presynaptic membranes of nerve terminals in proximity to serotonin-containing cell bodies [38]. 5-HTT mediates rapid removal and recycling of released 5-HT following neuronal stimulation. Thus, it has a critical role in the homeostatic regulation of the signals reaching 5-HT receptors. 5-HTT is important in emotion regulation and social behaviour, drawing from an interdisciplinary perspective of behavioural genetics and cognitive neuroscience. Integration of these findings suggest that the 5-HTT gene has an impact on behaviour and have a role in social cognition [39]. 5-HT is packaged into vesicles for synaptic exocytosis. Extracellular 5-HT signals through 5-HT_{2A} receptors. Synaptic 5-HT signaling are motivated by uptake of 5-HT_{2A} from the synapse by 5-HTT.

Recent evidence suggests that a dysfunction of the neuronal insulin receptor signalling cascade, with the subsequent abnormalities in glucose/energy metabolism, affect amyloid precursor protein metabolism and cause

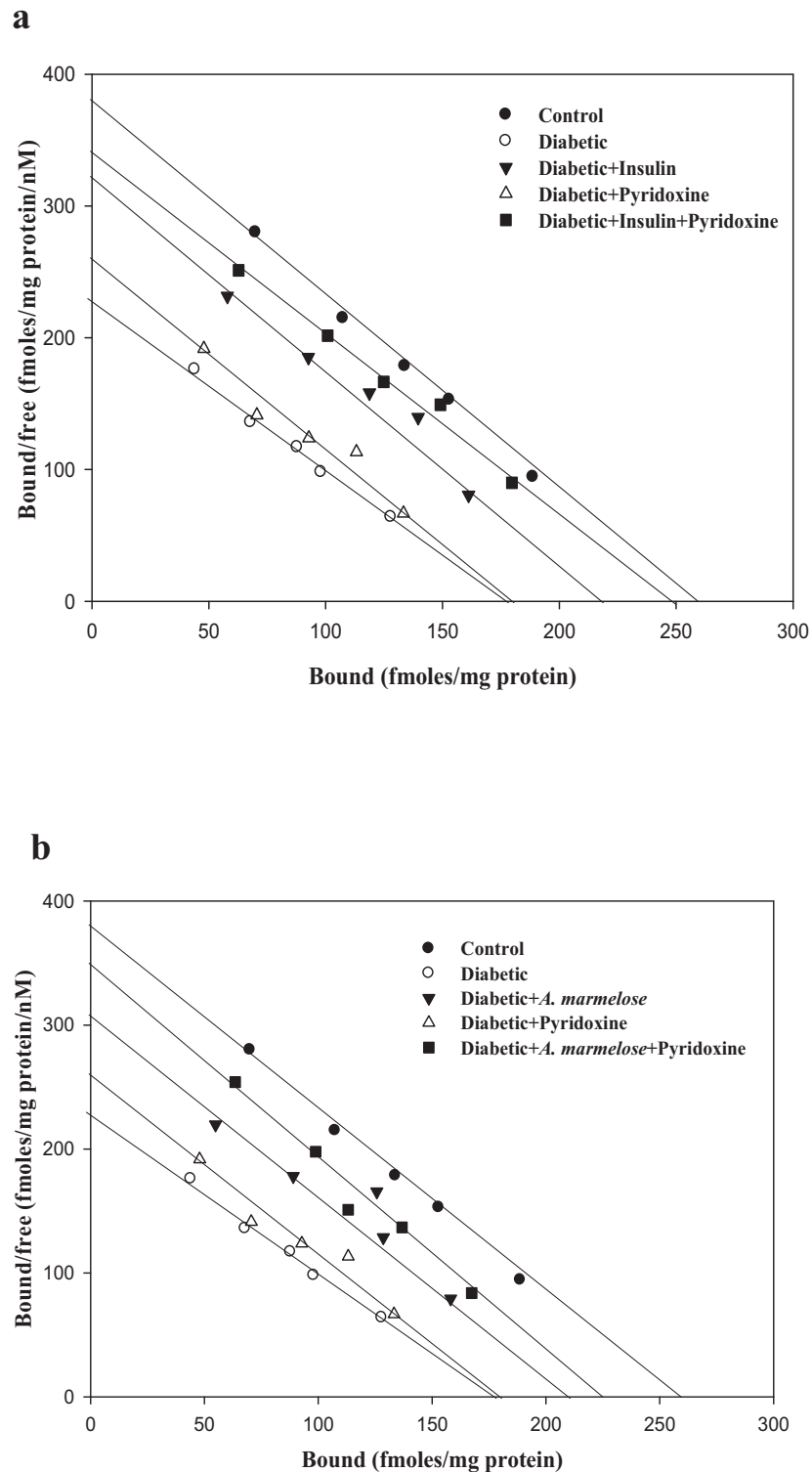


Figure 3 a, b Representative graph showing Scatchard analysis of [³H] Ketanserin binding against ketanserin in the hippocampus of control and experimental rats. B_{max} – Maximal Binding (fmol/mg protein), K_d – dissociation constant (nM). Values are mean \pm S.E.M of 4-6 separate experiments. Each group consists of 6-8 rats. ^a $p < 0.05$, ^b $p < 0.001$ when compared to control; ^c $p < 0.05$, ^d $p < 0.001$ when compared to diabetic group. Incubation was done with 0.1 nM-2.5 nM at 37 °C of [³H] Ketanserin in a total incubation volume of 250 μ l. 10 μ M unlabelled ketanserin was used to determine the nonspecific binding. The reaction was stopped by rapid filtration through GF/B filters using ice cold Washing Buffer pH 7.6. Bound radioactivity was counted with cocktail-T in a Wallac 1409 liquid scintillation counter.

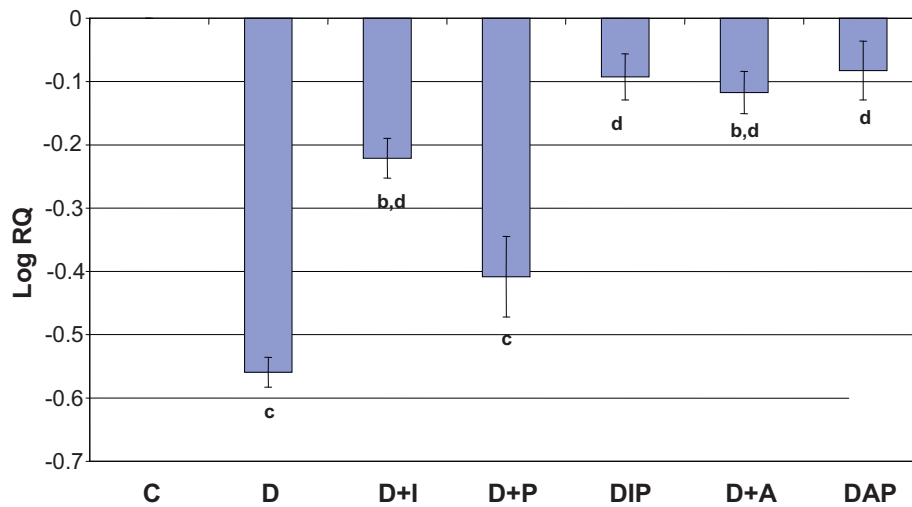


Figure 4 Representative graph showing Real Time amplification of 5-HT_{2A} mRNA from the hippocampus of control and experimental rats. are mean \pm S.E.M of 4-6 rats in each group. Each group consists of 6-8 rats. ^a $p < 0.001$ when compared to control group, ^b $p < 0.001$ when compared to diabetic group. The relative ratios of mRNA levels were calculated using the $\Delta\Delta$ CT method normalized with β -actin CT-value as the internal control and Control CT-value as the calibrator.

insulin dysfunction [40]. In this study the altered expression of insulin receptor expression in the hippocampus of diabetic rats was reversed to near control by treatment with insulin and *Aegle marmelos* alone and in combination with pyridoxine. The distribution of insulin receptors in the brain and the presence of insulin-dependent glucose transporters suggest that brain insulin participate in several cognitive functions, including

learning and memory [41]. In animal models of diabetes, impairments of spatial learning occur in association with distinct changes in hippocampal synaptic plasticity due to defects in insulin action in the brain [42]. Treatment with insulin therefore not only corrects hyperglycaemia, but also directly affects the brain. One problem is that exogenous insulin injection reduces blood glucose and lead to hypoglycaemia that is associated with impaired

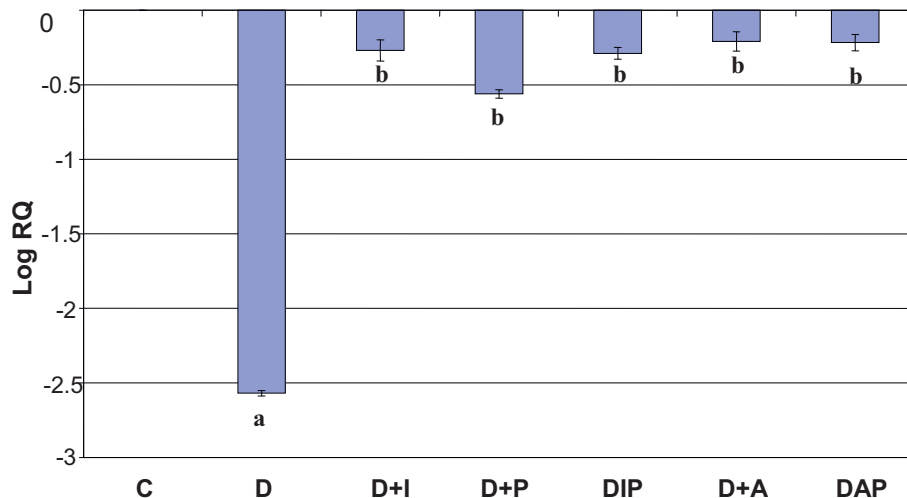


Figure 5 Representative graph showing Real Time amplification of 5-HTT mRNA from the hippocampus of Control and experimental rats. are mean \pm S.E.M of 4-6 rats in each group. Each group consists of 6-8 rats. ^a $p < 0.05$, ^b $p < 0.001$ when compared to control group, ^c $p < 0.001$ when compared to diabetic group. The relative ratios of mRNA levels were calculated using the $\Delta\Delta$ CT method normalized with β -actin CT-value as the internal control and Control CT-value as the calibrator.

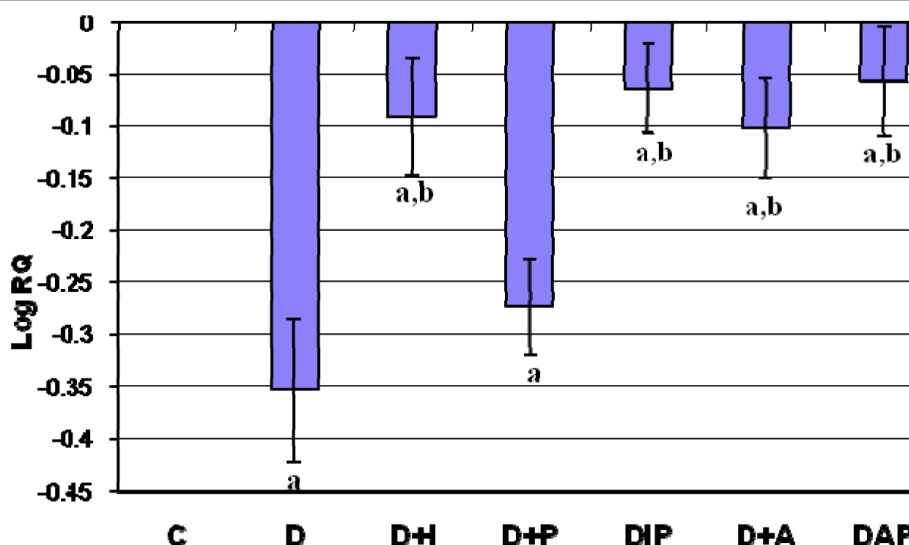


Figure 6 Representative graph showing Real Time amplification of INSR mRNA from the hippocampus of Control and experimental rats. are mean \pm S.E.M of 4-6 rats in each group. Each group consists of 6-8 rats. ^a $p < 0.05$, ^b $p < 0.001$ when compared to control group, ^c $p < 0.001$ when compared to diabetic group. The relative ratios of mRNA levels were calculated using the $\Delta\Delta CT$ method normalized with β -actin CT-value as the internal control and Control CT-value as the calibrator.

memory [43]. Cognitive impairments associated with diabetes caused by inadequate insulin/insulin receptor functions have also been documented [44]. The role of insulin as a regulator for cell proliferation has already been established [45]. It was observed from the earlier studies that administration of pyridoxine along with insulin serves as a control measure for diabetes, regulating GDH activity and glucose level [14]. The reversal of

hyperglycaemic condition in DIP treatment group is due to the effect of pyridoxine and insulin on pancreatic β cells. Treatment with pyridoxine to diabetic rats caused a reversal in the B_{max} of 5-HT_{2A} receptors to near control level. Also, it is evident that pyridoxine along with insulin and *Aegle marmelose* leaf extract has neuroprotective action mediated through the 5-HTT at the transcription level.

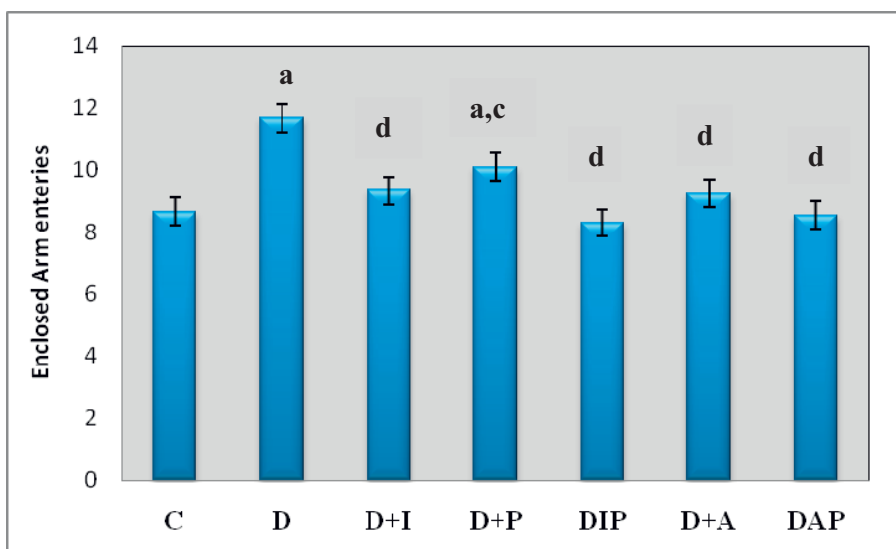


Figure 7 Representative graph showing behavioural response in streptozotocin induced diabetic Rats: Effects of insulin and pyridoxine treatment and Closed Arm Entry attempts (Counts/5 minutes) in Elevated plus- maze test by of control and experimental rats. Values are mean \pm S.E.M of 4-6 separate experiments. Each group consists of 6-8 rats. ^a $p < 0.001$ when compared to control group; ^c $p < 0.01$, ^d $p < 0.001$ when compared to diabetic group.

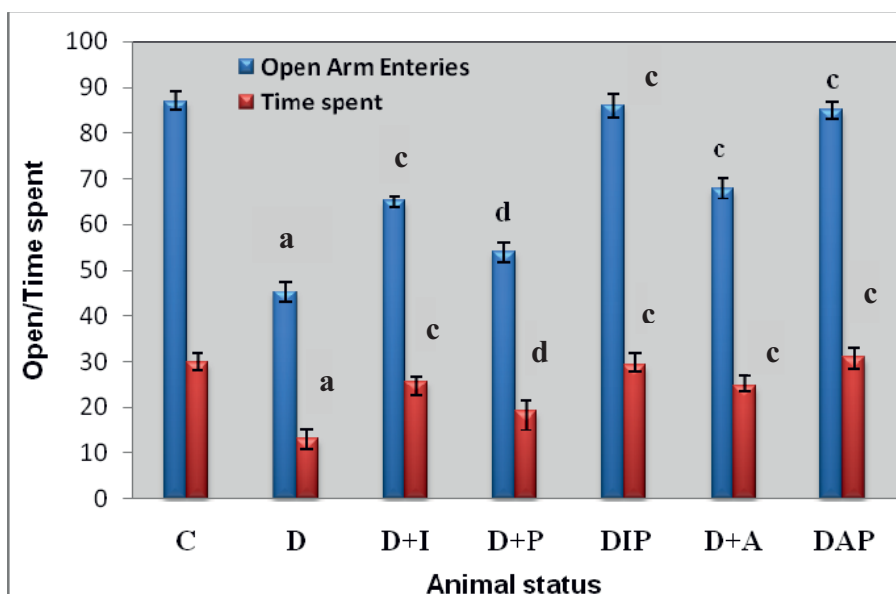


Figure 8 Representative graph showing behavioural response in streptozotocin induced diabetic Rats: Effects of insulin and pyridoxine treatment in Time Spent in Open Arm Entry attempts (Counts/5 minutes) by control and experimental rats in Elevated plus- maze test by of control and experimental rats. Values are mean \pm S.E.M of 4-6 separate experiments. Each group consists of 6-8 rats. ^a $p < 0.001$ when compared to control group; ^c $p < 0.01$, ^d $p < 0.001$ when compared to diabetic group.

Aegle marmelose was comparable to insulin in reversing blood glucose to normal levels. Anandharajan et al. [46] reported that *Aegle marmelose* activate glucose transport in PI3 kinase-dependent fashion. Scopoletin (7-hydroxy-6-methoxy coumarin) isolated from leaves of *Aegle marmelose* was evaluated for its potential to regulate hyperglycemia in rats [47]. Alkaloidal-amide Aegeline isolated from leaves of *Aegle marmelose* is found to have anti-hyperglycemic activity by lowering the blood glucose [46]. The leaf extract treated animals appeared healthier and were less prone to the frequent hypoglycaemic condition observed in their insulin treated counterparts. Previous studies by Sharma et al. [48] the plant extract enhance glucose utilization since it significantly decreased the blood glucose level. This fact attributed to potentiating of insulin effect of plasma by increasing the pancreatic secretion of insulin from existing β -cell or its release from bound insulin intercede by increase in the insulin receptor. Treatment with pyridoxine alone and in combination with insulin and *Aegle marmelose* to diabetic rats caused a reversal in the B_{max} of 5-HT, 5-HT_{2A} receptors and gene expression to near control level. Also, it is evident that *Aegle marmelose* has a role in controlling INSR function. This study demonstrates the involvement of 5-HT_{2A} receptor which has modulating effect on the diabetes stress. Administration of pyridoxine alone and in combination with *Aegle marmelose* and insulin significantly decreased the diabetic associated

stress. Hence the treatment has pharmacological and neurobiological basis.

The change in brain 5-HT synthesis rate in diabetic animals is related to the various behavioural and psychological changes [49]. Anxiety is a neurological problem associated with diabetes mellitus. Muneoka and colleagues [50] revealed the correlation between diabetic anxiety and serotonergic systems. There is a decrease in the serotonergic response to stressful stimuli and the dysfunction of stress-elicited 5-HT release caused the increased expression of fear-related behaviour in diabetic rats [51]. Investigation on elevated plus maze and spontaneous alternation in behaviour paradigm as a measure of anxiety. Our findings support impaired hippocampal plasticity and cognition induced by diabetes. Diabetic rats showed an increased percentage attempt made towards open arm entry and the animal also remained for longer period in closed arms of elevated plus-maze maze thereby causing hypo locomotion in diabetic rats. The treatment reversed the behavioural deficit in diabetic rats to near control. The possible anxiolytic effect is related to its effect on serotonergic transmission [52]. Thus perturbations of the 5-HT receptor system directly modulate stress susceptibility rendering them anxiogenic as well as depressive profile. A decrease in general exploratory activity in an open arena after restraint stress has been previously described [37]. In the elevated plus-maze studies found a decrease in the percentage of open arm entries and/or time spent

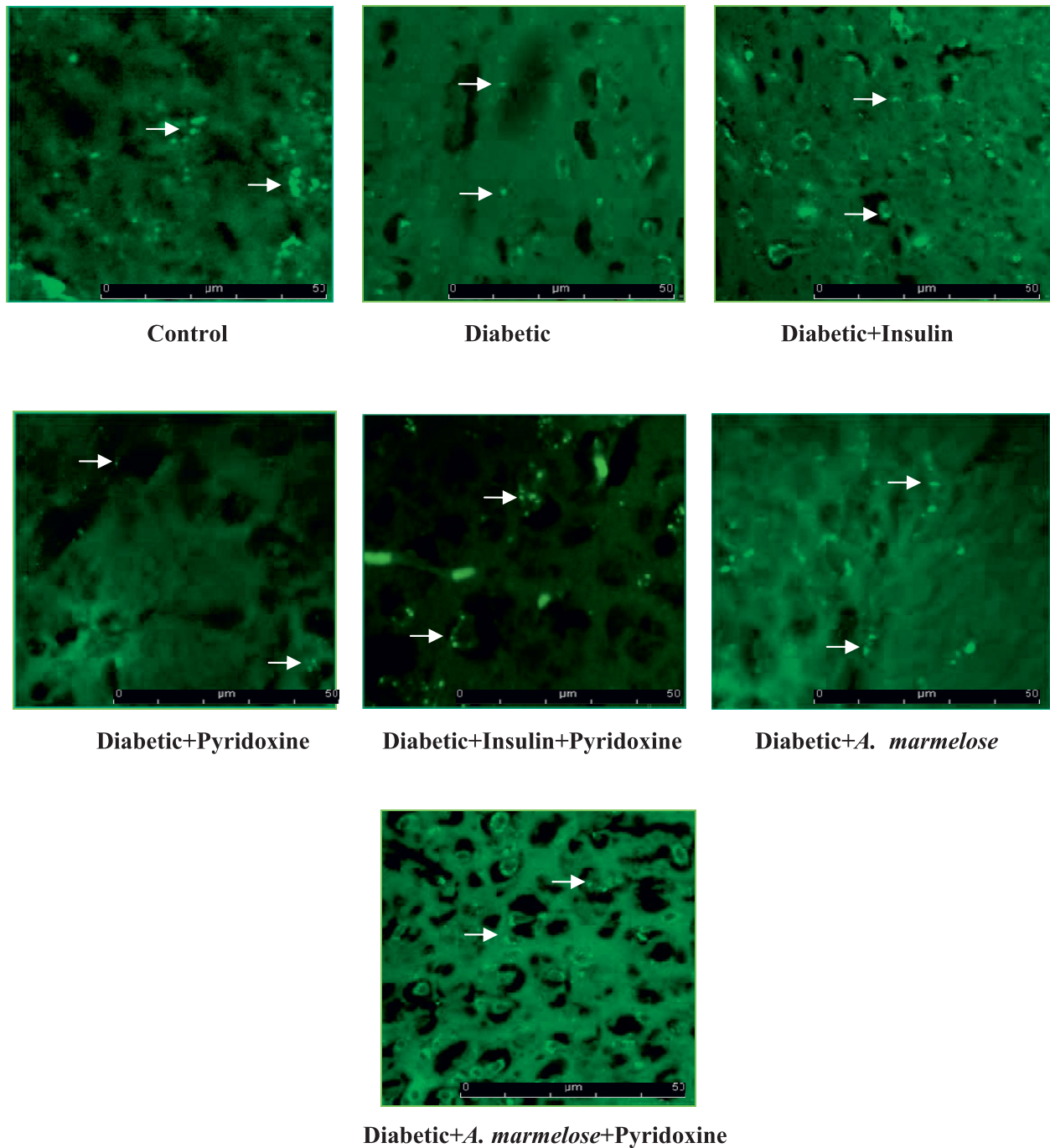


Figure 9 Confocal image of 5-HT_{2A} receptors in the hippocampus of control and Experimental rats using immunofluorescent 5-HT_{2A} receptor specific primary antibody and FITC as secondary antibody. The pixel intensity of The pixel intensity of control - 384132 ± 1454, diabetic - 133475 ± 1431^a, diabetic+Insulin - 229123 ± 1453^{a, c}, diabetic+pyridoxine - 151012 ± 2662^{a, b}, diabetic+insulin+pyridoxine - 398791 ± 2105^c, diabetic+*Aegle marmelose* - 222921 ± 1097^{a, c} and diabetic+*Aegle marmelose*+pyridoxine - 314997 ± 1084^c. Values are mean ± S.E.M of 4-6 rats in each group. Each group consists of 6-8 rats. ^a $p < 0.001$ when compared to control group; ^b $p < 0.05$, ^c $p < 0.001$ when compared to diabetic group. There was significant reversal of 5-HT_{2A} receptor to near control level on treatment with pyridoxine alone and in combination therapy with insulin and *Aegle marmelose* compared to diabetic rats. Arrow in white shows 5-HT_{2A} receptors.

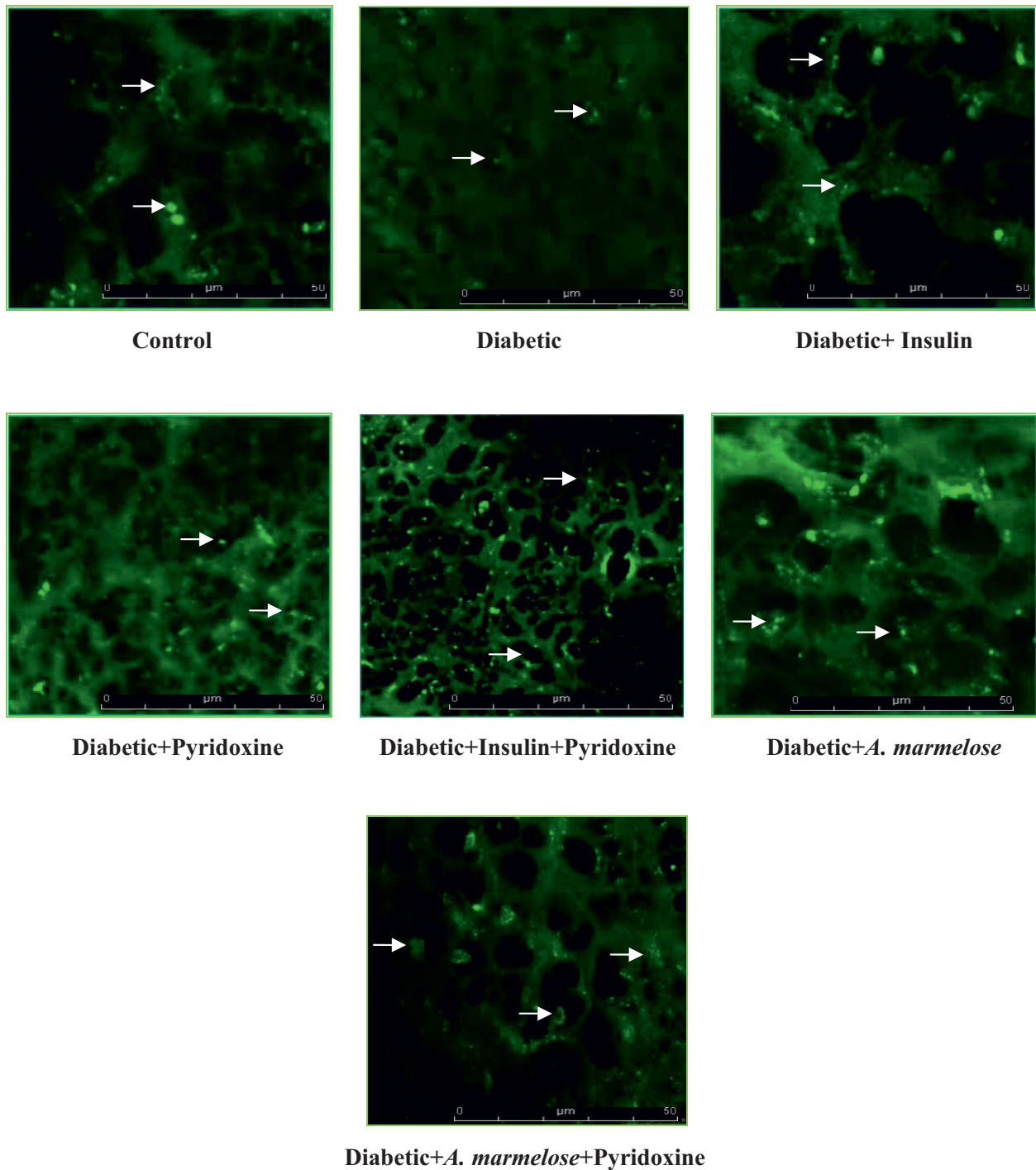


Figure 10 Confocal image of 5-HTT receptors in the hippocampus of control and Experimental rats using immunofluorescent 5-HTT receptor specific primary antibody and FITC as secondary antibody. The pixel intensity of control - 4235653 ± 1960 , diabetic - 2833408 ± 1978^a , diabetic+Insulin - $3964668 \pm 1670^{a,b}$, diabetic+pyridoxine - 2897587 ± 3426^a , diabetic+insulin+pyridoxine - 4121017 ± 2723^b , diabetic +*Aegle marmelose* - $3866844 \pm 1534^{a,b}$ and diabetic+*Aegle marmelose*+pyridoxine - 4098789 ± 2086^b . Values are mean \pm S.E.M of 4-6 rats in each group. Each group consists of 6-8 rats. ^a $p < 0.001$ when compared to control group; ^b $p < 0.001$ when compared to diabetic group. There was significant reversal of 5-HTT receptor to near control level on treatment with pyridoxine alone and in combination therapy with insulin and *Aegle marmelose* compared to diabetic rats. Arrow in white shows 5-HTT.

in them [6,29]. This study demonstrates the involvement of 5-HT receptor which has modulating effect on the diabetes and associated motor defects. Cools et al. [53] suggest that serotonergic receptor function resolve the essential inconsistency in hippocampus associated with depression. Administration of pyridoxine and insulin significantly increased the percentage of open arm entries and the number of total entries. Hence the treatment has pharmacological and neurobiological bases of anxiety.

The prevalence of diabetes among depressed and anxious patients is due to high sensitivity of diabetics to the adverse effects of stress, etiology and course of the disease. Serotonergic system and insulin function play key roles in the regulation of stress-related behaviours. The result of this study has demonstrated the effect of insulin, *Aegle marmelose* leaf extract alone and in combination with pyridoxine has marked to normalize 5-HT, 5-HT_{2A} receptor, gene expression studies along with the Elevated plus test implicate a role in reducing the stress associated with diabetic rats. Thus it is suggested that pyridoxine treated alone and in combination with insulin and *Aegle marmelose* have a functional role through serotonergic receptors regulation in the hippocampus. This represents a possibility for the better management of diabetic mediated neurological complications.

Abbreviations

INSR: Insulin receptor; 5-HT: Serotonin; 5-HIAA: 5-hydroxy indole acetic acid; 5-HTT: 5-HT Transporter; EDTA: Ethylene Diamine Tetra Acetic Acid.

Acknowledgements

This work was supported by research grants from DBT, DST, ICMR, Govt. of India and KSCSTE, Govt. of Kerala to Dr. C. S. Paulose. Pretty Mary Abraham thanks DST, Govt. of India, for SRF.

Authors' contributions

PMA and CSP designed research. PMA, KPK, JM, AM and SJ carried out the experiments and drafted manuscript. All authors read and approved the final manuscript.

Competing interests

The authors declare that they have no competing interests.

Received: 9 August 2010 Accepted: 25 September 2010

Published: 25 September 2010

References

1. Moosavi M, Naghdi N, Maghsoudi N, Zahedi Asl S: **Insulin protects against stress induced impairments in water maze performance.** *Behav Brain Res* 2007, **176**:230-236.
2. Revest JM, Di Blasi F, Kitchener P, Rougé-Pont F, Desmedt A, Turiault M, Tronche F, Piazza PV: **The MAPK pathway and Egr-1 mediate stress-related behavioural effects of glucocorticoids.** *Nat Neurosci* 2005, **8**:664-672.
3. McNay EC, Fries TM, Gold PE: **Decreases in rat extracellular hippocampal glucose concentration associated with cognitive demand during a spatial task.** *Proc Natl Acad Sci USA* 2000, **97**:2881-2885.
4. Reagan LP, Gorovits N, Hoskin EK, Alves S, Katz E, Grillo C, Piroli G: **Localization and regulation of GLUTx1 glucose transporter in the hippocampus of streptozotocin diabetic rats.** *Proc Natl Acad Sci USA* 2001, **98**:2820-2825.
5. Alexis MS, Thiruma V, Roy GC, Kim L, Josephine ME, Mark PM: **Diabetes impairs hippocampal function through glucocorticoid-mediated effects on new and mature neurons.** *Nature neuroscience* 2008, **11**:309-317.
6. Gispen WH, Biessels GJ: **Cognition and synaptic plasticity in diabetes mellitus.** *Trends Neurosci* 2000, **23**:542-549.
7. Wyss JM, Swanson LW, Cowan WM: **A study of subcortical afferents to the hippocampal formation in the rat.** *Neuroscience* 1979, **4**:463-476.
8. Umbriaco D, Garcia S, Beaulieu C, Descarries L: **Relational features of acetylcholine, noradrenaline, serotonin and GABA axon terminals in the stratum radiatum of adult rat hippocampus (CA1).** *Hippocampus* 1995, **5**:605-620.
9. Dakshinamurti K, Sharma SK, Bonke D: **Influence of B Vitamins on Binding Properties of 5-HT Receptors in the CNS of Rats.** *Klin Wochenschr* 1990, **68**:142-145.
10. Calderón-Guzmán D, Hernández-Islas JL, Espitia-Vázquez I, Barragán-Mejía G, Hernández-García E, Santamaría-del AD, Juárez-Olguín H: **Pyridoxine, regardless of serotonin levels, increases production of 5-hydroxytryptophan in rat brain.** *Arch Med Res* 2004, **35**:271-274.
11. Paulose CS, Dakshinamurti K: **Effect of pyridoxine deficiency in young rats on high-affinity serotonin and dopamine receptors.** *J Neurosci Res* 1985, **14**:263-70.
12. La Rue A, Koehler KM, Wayne SJ, Chiulli SJ, Haaland KY, Garry PJ: **Nutritional status and cognitive functioning in a normally aging sample: a 6 years reassessment.** *American Journal of Clinical Nutrition* 1997, **65**:20-29.
13. Jackson J, Paulose CS: **Brain 5HT_{2A} receptor regulation by tryptophan supplementation in streptozotocin diabetic rats.** *J Biochem Mol Biol Biophys* 2000, **5**:1-7.
14. Aswathy RN, Biju MP, Paulose CS: **Effect of pyridoxine and insulin administration on brain glutamate dehydrogenase activity and blood glucose control in streptozotocin-induced diabetic rats.** *Biochimica et Biophysica acta* 1998, **18**:351-354.
15. Ponnachan PTC, Paulose CS, Pannikar KR: **Hypoglycaemic effect of Alkaloids preparation from leaves of *Aegle marmelose*.** *Amala Research Bulletin* 1993, **13**:37-41.
16. Glowinski J, Iversen LL: **Regional studies of catecholamines in the rat brain: The disposition of ³H. Norepinephrine, [³H]. DOPA in various regions of the brain.** *J Neurochem* 1966, **13**:655-669.
17. Paulose CS, Dakshinamurti K, Packer S, Stephen NL: **Sympathetic stimulation and hypertension in pyridoxine deficient adult rat.** *Hypertension* 1988, **11**:387-391.
18. Uzbekov MN, Murphy S, Rose SPR: **Ontogenesis of 5-HT 'receptors' in different regions of rat brain.** *Brain Res* 1979, **168**:195-199.
19. Leysen JE, Neimegeers CJE, Van Nueten JM, Laduron PM: **[³H] Ketanserin, a selective ligand for 5-HT₂ receptor binding sites.** *Mol Pharmacol* 1982, **21**:301-314.
20. Lowry OH, Roserbrough NJ, Farr AL, Randall RJ: **Protein measurements and folin phenol reagent.** *J Biol Chem* 1951, **193**:265-275.
21. Scatchard G: **The attraction of proteins for small molecules and ions.** *Ann NY Acad Sci* 1949, **51**:660-672.
22. Celia SC, Mary A, Johnson R, Flower JS, Bernard RM, Neil LB, Steven A: **Primate Model of Nonarteritic Anterior Ischemic Optic Neuropathy.** *Investigative Ophthalmology and Visual Science* 2008, **49**:2985-2992.
23. Pellow S, Chopin P, Files SE, Briley M: **Validation of open: Closed arm entries in an elevated plus-maze as a measure of anxiety in the rat.** *J Neurosci Methods* 1985, **14**:149-167.
24. Espejo EF: **Effects of weekly or daily exposure to the elevated plus-maze in male mice.** *Behav Brain Res* 1997, **87**:233-238.
25. Guimaraes FS, Del Bel EA, Padovan CM, Mendonça Netto S, Titze-de-Almeida R: **Hippocampal 5-HT receptors and consolidation of stressful memories.** *Beh Brain Res* 1993, **58**:133-139.
26. Cryer PE: **The barrier of hypoglycemia in diabetes.** *Diabetes* 2008, **57**:3169-3176.
27. Fujjoka M, Okuchi K, Hiramatsu KI, Sakaki T, Sakaguchi S, Ishii Y: **Specific changes in human brain after hypoglycemic injury.** *Stroke* 1997, **28**:584-587.
28. Junod A, Lambert AE, Staufferacher W, Renold AE: **Diabetogenic action of Streptozotocin, Relationship of dose to metabolic response.** *J Clin Invest* 1969, **48**:2129-2139.

29. Sandrini M, Vitale G, Vergoni AV, Ottani A, Bertolini A: **Streptozotocin-induced diabetes provokes changes in 5-HT concentration and on 5-HT_{1A} and 5-HT_{2A} receptor in rat brain.** *Life science* 1997, **60**:1393-1397.
30. Daniel DL, Lora KH: **5-HT and energy balance: molecular mechanisms and implications for type 2 diabetes.** *Expert Rev Mol Med* 2007, **9**:1-24.
31. Umbriaco D, Garcia S, Beaulieu C, Descarries L: **Relational features of acetylcholine, noradrenaline, serotonin and GABA axon terminals in the stratum radiatum of adult rat hippocampus (CA1).** *Hippocampus* 1995, **5**:605-620.
32. Wang RY, Arvanov VL: **M-100907, a highly selective 5-HT_{2A} receptor antagonist and a potential atypical antipsychotic drug, facilitates induction of long-term potentiation in area CA1 of the rat hippocampal slice.** *Brain Res* 1998, **779**:309-313.
33. Michael E, Jacob H, Robert GM: **Streptozotocin-induced diabetes reduces brain serotonin synthesis in rats.** *J Neurochem* 1986, **46**:1068-1072.
34. Dakshinamurti K, Sharma SK, Geiger JD: **Neuroprotective actions of pyridoxine.** *Biochim Biophys Acta* 2003, **1647**:225-229.
35. Abraham PM, Paul J, Paulose CS: **Down regulation of cerebellar serotonergic receptors in streptozotocin induced diabetic rats: Effect of pyridoxine and Aegle marmelose.** *Brain Research Bulletin* 2010, **82**:87-94.
36. Abraham PM, Anju TR, Jayanarayanan S, Paulose CS: **Serotonergic receptor functional up regulation in cerebral cortex and down regulation in brain stem of Streptozotocin induced Diabetic Rats: Antagonism by pyridoxine and insulin.** *Neuroscience letters* 2010, **483**:23-27.
37. Lesch KP, Aulakh CS, Tolliver TJ, Hill JL, Murphy DL: **Regulation of G proteins by chronic antidepressant drug treatment in the rat brain: tricyclics but not clorgyline increase G_o subunits.** *Eur J Mol Pharmacol Sect* 1991, **207**:361-364.
38. Dennis L, Murphy AL, Gary R, Klaus-Peter L: **5-HT Transporter: Gene, Genetic Disorders and Pharmacogenetics.** *Molecular Interventions* 2004, **4**:109-123.
39. Turhan C, Klaus-Peter L: **Long story short: the 5-HT transporter in emotion regulation and social cognition.** *Nature Neurosci* 2007, **10**:1103-1109.
40. Santos MS, Pereira EM, Carvalho AP: **Stimulation of immunoreactive insulin release by glucose in rat brain synaptosomes.** *Neurochem Res* 1999, **24**:33-36.
41. Morrison PD, Mackinnon MWB, Bartrup JT, Skett PG, Stone TW: **Changes in adenosine sensitivity in the hippocampus of rats with streptozotocin-induced diabetes.** *Br J Pharmacol* 1992, **105**:1004-1008.
42. Williamson JR, Chang K, Frangos M, Hasan KS, Ido Y, Kawamura T, Nyengaard JR, Enden MV, Kilo C, Tilton RG: **Hyperglycemic pseudohypoxia and diabetic complications.** *Diabetes* 1993, **42**:801-813.
43. Santucci AC, Schroeder H, Riccio DC: **Homeostatic disruption and memory, effect of insulin administration in rats.** *Behav Neural Biol* 1990, **53**:321-333.
44. Hyun-Young P, Hak-Seung L, Hyuk C, Yo-Sik K, Kwang-Ho C: **Association between insulin resistance and cognitive function in mild cognitive impairment.** *Alzheimer's and Dementia* 2009, **5**:289.
45. Paul WM, Sudha B, Paulose CS: **Kinetic parameters of thymidine kinase and DNA Synthesis during Liver regeneration: Role of thyroid hormones.** *Biochem Mol Biol Int* 1996, **40**:1067-1075.
46. Anandharajan R, Jaiganesh S, Shankernarayanan N, Viswakarma R, Balakrishnan A: **In vitro glucose uptake activity of Aegle marmelose and Syzygium cumini by activation of Glut-4, PI3 kinase and PPAR γ in L6 myotubes.** *Phytomedicine* 2006, **13**:434-441.
47. Panda S, Kar A: **Evaluation of the antithyroid, antioxidative and antihyperglycemic activity of scopoletin from Aegle marmelose leaves in hyperthyroid rats.** *Phytother Res* 2006, **20**:1103-1105.
48. Sharma B, Satapathi SK, Roy P: **Hypoglycemic and hypolipidemic effect of Aegle marmelos (L.) leaf extract on streptozotocin induced diabetic mice.** *Int J Pharmacol* 2007, **3**:444-452.
49. Sanders K, Mills J, Martin FIR, Del Horne DJ: **Emotional attitudes in adult insulin-dependent diabetics.** *J Psychonon Res* 1975, **19**:241-246.
50. Muneoka K, Mikuni M, Ogawa T, Kitera K, Kamei K, Takigawa M, Takahashi K: **Prenatal dexamethasone exposure alters brain monoamine metabolism and adrenocortical response in rat offspring.** *Am J Physiol Regulatory Integrative Comp Physiol* 1997, **273**:1669-1675.
51. Miyata S, Yamada N, Hirano S, Tanaka S, Kamei J: **Diabetes attenuates psychological stress-elicited 5-HT secretion in the prefrontal cortex but not in the amygdala of mice.** *Brain Res* 2007, **147**:233-239.
52. Thomas S, Suzanne L, Michael L, Caroline J, Austin W: **Deficits in Radial Arm Maze Performance in Kindled Rats: Evidence for Long-Lasting Memory Dysfunction Induced by Repeated Brief seizures.** *J Neuroscience* 1995, **15**:8295-8301.
53. Cools R, Roberts AC, Robbins TW: **Serotonergic regulation of emotional and behavioural control processes.** *Trends Cogn Sci* 2008, **12**:31-40.

doi:10.1186/1423-0127-17-78

Cite this article as: Abraham et al.: Alterations in hippocampal serotonergic and INSR function in streptozotocin induced diabetic rats exposed to stress: neuroprotective role of pyridoxine and Aegle marmelose. *Journal of Biomedical Science* 2010 **17**:78.

Submit your next manuscript to BioMed Central and take full advantage of:

- Convenient online submission
- Thorough peer review
- No space constraints or color figure charges
- Immediate publication on acceptance
- Inclusion in PubMed, CAS, Scopus and Google Scholar
- Research which is freely available for redistribution

Submit your manuscript at
www.biomedcentral.com/submit

