

Published in final edited form as:

Mol Microbiol. 2005 June ; 56(5): 1274–1286. doi:10.1111/j.1365-2958.2005.04609.x.

A member of the cAMP receptor protein family of transcription regulators in *Mycobacterium tuberculosis* is required for virulence in mice and controls transcription of the *rpfA* gene coding for a resuscitation promoting factor

Lisa Rickman^{1,†}, Colin Scott^{2,‡}, Debbie M. Hunt¹, Thomas Hutchinson², M. Carmen Menéndez^{1,‡}, Rachael Whalan¹, Jason Hinds³, M. Joseph Colston^{1,§}, Jeffrey Green², and Roger S. Buxton^{1,*}

¹Division of Mycobacterial Research, National Institute for Medical Research, Mill Hill, London NW7 1AA, UK

²The Krebs Institute for Biomolecular Research, Department of Molecular Biology and Biotechnology, University of Sheffield, Western Bank, Sheffield S10 2TN, UK

³Bacterial Microarray Group, Department of Medical Microbiology, St. George's Hospital Medical School, Cranmer Terrace, London SW17 0RE, UK

Summary

Deletion of gene Rv3676 in *Mycobacterium tuberculosis* coding for a transcription factor belonging to the cAMP receptor protein (CRP) family caused growth defects in laboratory medium, in bone marrow-derived macrophages and in a mouse model of tuberculosis. Transcript profiling of *M. tuberculosis* grown *in vitro* identified 16 genes with significantly altered expression in the mutant compared with the wild type. Analysis of the DNA sequences upstream of the corresponding open reading frames revealed that 12 possessed sequences related to a consensus CRP binding site that could represent the sites of action of Rv3676. These included *rpfA*, *lprQ*, *whiB1* and *ahpC* among genes with enhanced expression in the wild type, and Rv3616c-Rv3613c, Rv0188 and *lipQ* among genes exhibiting enhanced expression in the mutant. The activity of an *rpfA::lacZ* promoter fusion was lowered in the Rv3676 mutant and by mutation of the predicted Rv3676 binding site. Moreover, the product of Rv3676 (isolated as a TrxA fusion protein) interacted specifically with the *rpfA* promoter, and binding was inhibited by mutation of the Rv3676 site. Although Rv3676 retains four of the six amino acid residues that bind cAMP in *Escherichia coli* CRP addition of cAMP did not enhance Rv3676 binding at the *rpfA* promoter *in vitro*. In summary, it has been shown that Rv3676 is a direct regulator of *rpfA* expression, and because *rpfA* codes for a resuscitation promoting factor this may implicate Rv3676 in reactivation of dormant *M. tuberculosis* infections.

© 2005 Blackwell Publishing Ltd

*For correspondence. rbuxton@nimr.mrc.ac.uk; Tel. (+44) 020 8816 2225; Fax (+44) 020 8906 4477. .

†Present address: The Wellcome Trust Sanger Institute, Wellcome Trust Genome Campus, Hinxton, Cambridge CB10 1SA, UK

‡CSIRO Entomology, Canberra, ACT 2601, Australia

§Departamento de Medicina Preventiva, Facultad de Medicina, Universidad Autonoma de Madrid, Arzobispo Morcillo, s/n. 28029-Madrid, Spain.

§Deceased 20 February 2003.

Introduction

Mycobacterium tuberculosis, the causative agent of tuberculosis (TB), is one of the most successful of human pathogens, currently contributing to the deaths of ~2 million people every year (Dye *et al.*, 1999). A characteristic feature of tuberculosis is that much disease actually occurs through reactivation of existing dormant infections; the lifetime risk of reactivation TB is estimated at 5–10% (Bloom and Murray, 1992). For *M. tuberculosis*, the preferred environment is the interior of the macrophage (Russell, 2001). The interplay between the bacterium and the eukaryotic cell, together with the interaction with the immune system, defines the outcome of the infection (Kaufmann, 2001). Following an initial infection, *M. tuberculosis* can persist for long periods of time in a dormant or non-replicating persistent state from which it may emerge several years later when conditions are more favourable, such as when the infected individual becomes immunocompromised (reviewed by Stewart *et al.*, 2003). As about a third of the world's population is thought to have a latent *M. tuberculosis* infection, the potential for reactivation TB is very large (Dye *et al.*, 1999). Importantly, dormant bacteria are able to resist the effects of the human immune response and chemotherapy (reviewed by Stewart *et al.*, 2003). The nature of the latent state is therefore of much interest and an understanding of mycobacterial persistence is critical to the control of TB.

Sequencing of the *M. tuberculosis* genome has revealed a number of putative regulatory genes, some identified as orthologues of well-known genes in other bacteria (Cole *et al.*, 1998). Defining the functions of these regulators will provide new insights into the mechanisms by which *M. tuberculosis* controls gene expression in response to environmental and metabolic signals when it is present as an intracellular pathogen.

Members of the cAMP receptor protein (CRP)-FNR superfamily of transcription factors regulate a diversity of physiological functions in a wide range of bacteria. Different members of the family control aspects of carbon, sulphur and nitrogen metabolism, denitrification, nitrogen fixation, aerobic and anaerobic respiration, virulence gene expression and bacterial luminescence in response to a variety of environmental and metabolic signals (Green *et al.*, 2001). Members of this large family of transcription regulators are all predicted to be structurally related to CRP. The archetypal CRP fold (Schultz *et al.*, 1991) is a versatile structure that has evolved to accommodate different functional specificities in signal perception, DNA binding and interaction with RNA polymerase to allow different family members to respond to a wide range of signals (Green *et al.*, 2001; Korner *et al.*, 2003). The best-characterized member of the family is CRP itself. *Escherichia coli* CRP controls the expression of numerous genes in response to changes in the intracellular concentration of cAMP (Gosset *et al.*, 2004). Upon binding cAMP, the cAMP:CRP complex binds to promoters containing DNA sequences related to the consensus TGTGANNNNNT CACA (Berg and von Hippel, 1988). Once bound to promoter DNA CRP recruits RNA polymerase and specific protein:protein contacts are established that promote transcription of target genes (reviewed by Busby and Ebright, 1999). Alternatively, at some promoters CRP represses transcription by promoter occlusion.

The *M. tuberculosis* Rv3676 gene is annotated on TubercuList (<http://genolist.pasteur.fr/TubercuList/>) as a 'probable transcriptional regulatory protein (probably CRP/FNR-family)'. Here an Rv3676 null mutant of *M. tuberculosis* is shown to be attenuated in macrophages and in a mouse model of tuberculosis infection. Transcriptome analysis *in vitro* reveals significant transcriptional changes in the Rv3676 mutant compared with the wild type, including altered expression the *rpfA* gene coding for one of five resuscitation promoting factor proteins (Rpfs), which could be involved in the regulation of persistence and reactivation (Mukamolova *et al.*, 2002a). These proteins, originally discovered in

Micrococcus luteus (Mukamolova *et al.*, 1998), are potential regulators of persistence and reactivation and picomolar concentrations of Rpfs are able to stimulate the growth of extended stationary-phase cultures of *Mycobacterium bovis* BCG (Mukamolova *et al.*, 2002a). They may therefore play a role in reactivation of latent infection. Little is yet known about how these genes are regulated. Here it is shown that the upstream region of *rpfA* contains a site similar to the CRP binding site in *E. coli* that is required for Rv3676-mediated regulation of *rpfA* expression. This therefore suggests that Rv3676 is an important transcriptional regulator in the control of *M. tuberculosis* infection and by regulating the expression of *rpfA* is implicated in reactivation during latency.

Results

Rv3676 is a member of the CRP family of transcription regulators

Escherichia coli CRP is the founder member of a superfamily of structurally related transcription regulators and the protein encoded by *M. tuberculosis* Rv3676 is a member of this family. Rv3676 is a deeply branching member related to the CRP and CooA groups of the family (Green *et al.*, 2001; Korner *et al.*, 2003). Thus, Rv3676 is 32% identical (53% similar) to *E. coli* CRP over 189 amino acids (residues 31–213 for Rv3676 and 24–206 for CRP) with most divergence within the N-terminal regions of the proteins. The N-terminal region of *E. coli* CRP contains two residues (His19 and His21) that interact with RNA polymerase and contribute to the activation of transcription from class II promoters (reviewed by Busby and Ebright, 1999). The lack of conserved amino acids in this region might suggest Rv3676 interacts differently with its cognate polymerase. Four of six residues that are involved in cAMP binding in *E. coli* CRP (Schultz *et al.*, 1991) are conserved in Rv3676 (Fig. 1). Moreover, the amino acid residues (Arg180, Glu181 and Arg185) that are directly involved in DNA recognition in *E. coli* CRP (Schultz *et al.*, 1991) are well conserved in Rv3676 with only Arg185 of CRP being replaced by Lys at the corresponding position in Rv3676 (Fig. 1). In contrast to the sustained similarities between CRP and Rv3676, most similarities to CooA are restricted to the C-terminal region (amino acids 140–209 of Rv3676 and 129–198 of CRP) and the amino acids (Pro2 and His77) that act as ligands for the CO-sensing haem cofactor of CooA (Lanzilotta *et al.*, 2000) are not conserved in Rv3676. Therefore, these observations suggest that Rv3676 might share at least some of the functional characteristics of *E. coli* CRP, such as cyclic nucleotide binding and recognition of a similar DNA sequence.

The Rv3676 deletion mutant is attenuated for growth *in vitro* and *in vivo*

To investigate the requirement of Rv3676 for normal *in vitro* growth, the Rv3676 gene was deleted in *M. tuberculosis* H37Rv, and the optical densities of both the Rv3676 mutant and wild-type strains were monitored in rolling culture bottles from inoculation until the cultures reached stationary phase. The Rv3676 mutant grew more slowly than the wild type, the doubling time being approximately 30 h compared with 16 h in the wild type (Fig. 2). In addition, the mutant strain grew very slowly on solid 7H11 agar plates, taking approximately 5 weeks to form colonies, compared with 2–3 weeks for the parental strain.

The observation that the Rv3676 mutant exhibited impaired growth *in vitro* prompted experiments to investigate growth in unactivated mouse bone marrow-derived macrophages. These showed that growth of the Rv3676 knockout was severely impaired compared with the H37Rv wild type (Fig. 3). To ascertain whether the Rv3676 mutant was attenuated *in vivo*, growth of the mutant and wild-type strains in the lungs and spleens of BALB/c mice was determined following intravenous injection of the bacteria (Fig. 4). The Rv3676 mutant exhibited greatly reduced bacterial loads in the mouse lungs and spleen compared with infection by the wild type. It therefore falls within the growth *in vivo* (*giv*) type of mutant

defined by Hingley-Wilson *et al.* (2003). The Rv3676 regulatory system therefore appears to be very important for the normal growth of the bacterium during the multiplication phase in macrophages and in mice, but did not appear necessary for the persistence phase of growth.

To ensure that the phenotypes observed were in fact due to deletion of the Rv3676 gene, the mutation was complemented with the wild-type allele using either a short (pRv3676_{short}) or a longer construct (pRv3676_{long}). Using either construct, the phenotype of the complemented strain in *in vitro* (data not shown), in macrophages (Fig. 3) and in mice (Fig. 4) was very similar to that of the wild-type strain and thus it was concluded that mutation of Rv3676 is the cause of the impaired growth phenotype *in vitro* and *in vivo*.

The Rv3676 mutation causes many transcriptional changes during *in vitro* growth

Whole genome DNA microarrays of *M. tuberculosis* H37Rv were used to identify genes and operons with altered expression in the Rv3676 mutant when grown *in vitro*. A total of seven hybridizations were performed from three replicate exponential phase RNA samples. This identified eight genes whose transcripts were >2.4-fold more abundant in the wild type than the Rv3676 mutant, and eight that were >2.4-fold more abundant in the mutant (Table 1).

Among those transcripts that were more abundant in the wild type was that of the resuscitation promoting factor, Rv0867c (*rpfA*). This difference in *rpfA* expression between the wild type and Rv3676 mutant was confirmed by measuring the amount of *rpfA* mRNA using real-time polymerase chain reaction (PCR), standardizing to the amount of mRNA of a normalizer gene (*sigA*, the primary sigma factor), the expression of which did not change in the array analysis under these conditions and which has previously been shown to exhibit constant expression during exponential growth and so can be used as an internal standard for mRNA quantification (Dubnau *et al.*, 2002). Using primers from the coding region of *rpfA*, 3.86-fold more *rpfA* transcript was detected in the wild type than in the Rv3676 mutant (not shown). From the DNA microarray analysis, other notable genes whose transcription was enhanced in the wild type were *whiB1*, a probable transcriptional regulatory protein, *ahpC*, coding for alkyl hydroperoxide reductase, *lprQ*, a probable conserved lipoprotein LPRQ, and *fadD26*, coding for acyl CoA synthase, and among genes enhanced in the Rv3676 mutant was *fadD10*, a possible fatty acid-CoA ligase, and *lipQ*, a probable carboxyesterase. Therefore, it was concluded that mutation of Rv3676 causes pleiotropic changes in the *M. tuberculosis* transcriptome.

Determination of a possible Rv3676 binding site consensus sequence in *M. tuberculosis*

The intergenic DNA sequences of genes with altered expression profiles in the Rv3676 mutant (Table 1) were analysed to identify the likely binding site for Rv3676 in *M. tuberculosis*. The analysis was guided by the prediction that Rv3676 would recognize a site related to the *E. coli* CRP consensus (TGTGANNNNNTCACA) (reviewed by Busby and Ebright, 1999). This assumption was based upon the conservation of amino acids directly involved in recognizing DNA, and the observation that expression of Rv3676 in *E. coli* inhibits transcription from a CRP-activated promoter, suggesting that CRP and Rv3676 compete for the same binding site (not shown). Possible Rv3676 binding sites associated with the genes differentially expressed in the Rv3676 mutant are listed in Table 1. Only for Rv0099 and Rv1623 was no obvious site resembling the search sequence identified; note that Rv3616c-Rv3613c probably form an operon transcribed from a Rv3676-regulated promoter located upstream of Rv3616c. Alignment of the putative Rv3676 binding sites revealed a binding site consensus consisting of GTGNNANNNNNCACA. Analysis of the intergenic regions of the *M. tuberculosis* genome using the TubercuList (<http://genolist.pasteur.fr/TubercuList/>) website revealed 15 matches to the putative Rv3676 consensus sequence and 242 sequences with one mismatch, suggesting that Rv3676 is a global regulator in *M. tuberculosis*.

Rv3676 directly regulates *rpfA* expression

The transcription profiling experiments suggested that *rpfA* expression is positively controlled by Rv3676 and analysis of the upstream DNA sequence revealed the presence of a putative Rv3676 binding site (Table 1). The site is located ~440 bp upstream of the *rpfA* translational start close to the *moaD2* gene (Fig. 5A). The presence of an abundant *rpfA* transcript was detected using reverse transcription polymerase chain reaction (RT-PCR) with primers located in the *rpfA* coding region (Myc477) and downstream of the predicted Rv3676 binding site (Myc478) (Fig. 5A and B, lane 1). Much less abundant transcripts were detected using Myc477 and primers Myc479, located just upstream of the predicted Rv3676 binding site, or Myc486, located within *moaD2* (Fig. 5A and B, lanes 3 and 5). This suggests that the major *rpfA* transcript initiates downstream of the putative Rv3676 binding site and also that some *moa* transcripts extend into *rpfA*. Accordingly, the activity of an *rpfA::lacZ* promoter fusion consisting of 597 bp DNA from immediately upstream of the *rpfA* translational start (details of co-ordinates in *Experimental Procedures*) was approximately 7.5-fold lower in the Rv3676 mutant strain compared with the parent (Fig. 6A). Moreover, mutation of the predicted Rv3676 binding site in the *rpfA* promoter region (TGTGAcattacCCACA to TGT~~T~~AcattacC~~A~~ACA) lowered *in vivo* transcription of the corresponding *rpfA::lacZ* fusion approximately ninefold (Fig. 6A). These differences are similar to those observed in the DNA microarray (approximately sixfold) and real-time PCR experiments (approximately fourfold) described above. A smaller construct of 335 bp gave similar results although the overall levels of expression were lower (Fig. 6A). The residual β -galactosidase activities observed with Rv3676 mutant, and the reporter with the mutated Rv3676 binding site, could result from the activity of the upstream promoter suggested by the RT-PCR experiments (Fig. 5B, lanes 3 and 5).

To test whether the observed changes in *rpfA* expression are mediated directly by Rv3676, the protein was isolated as a TrxA-His₍₆₎-Rv3676 fusion after overproduction in *E. coli* (Fig. 6B). The presence of the N-terminal His-tag facilitated affinity chromatography on HiTrap Chelating Sepharose to yield a fusion protein with the expected subunit M_r of ~37 000. Band shift assays showed that the Rv3676 fusion protein bound at the native *rpfA* promoter, and that addition of excess unlabelled *rpfA* promoter DNA effectively competed for the labelled promoter (Fig. 6C). The mutation of the predicted *rpfA* Rv3676 binding site (TGTGAcattacCCACA to TGT~~T~~AcattacC~~A~~ACA) that led to lower expression *in vivo* (see above) also abolished Rv3676 binding *in vitro* (Fig. 6C). Furthermore, the mutant *rpfA* promoter DNA was unable to effectively compete with the unaltered promoter (Fig. 6C). Thus, it was concluded that Rv3676-mediated activation of *rpfA* expression is direct and requires interaction with the predicted binding site. For *E. coli* CRP DNA binding is greatly enhanced in the presence of its cognate signal molecule, cAMP. Despite retaining four of the six amino acid residues of *E. coli* CRP that directly contact cAMP, DNA binding of Rv3676 was not enhanced in the presence of cAMP or cGMP (Fig. 6C).

Discussion

Understanding the way in which *M. tuberculosis* regulates the expression of its genome is crucial in analysing the interaction with its environment. One way to do this is through the production and analysis of mutants of regulatory genes. Here it has been shown that *M. tuberculosis* Rv3676 is a member of the CRP family of transcription factors that is required for virulence in a mouse model of tuberculosis. Transcription profiling experiments comparing the wild type and Rv3676 mutant grown *in vitro* identified some of the genes that are regulated, directly or indirectly, by Rv3676 in *M. tuberculosis*. Further analysis of the regulation of one of these genes, *rpfA* coding for a resuscitation promoting factor thought to be involved in the extremely important processes of persistence and reactivation in *M. tuberculosis* infections, indicated that *rpfA* expression was directly regulated by Rv3676.

The *rpfA* gene is one of five genes in *M. tuberculosis* encoding resuscitation promoting factor proteins (Mukamolova *et al.*, 2002a). The Rpf proteins are secreted growth factors that stimulate the growth of aged cultures of *M. tuberculosis*, increasing the viable counts on solid agar by one or two orders of magnitude (Shleeva *et al.*, 2004). Also a subpopulation of either injured or dormant *M. tuberculosis* cells obtained from macrophages, which were unculturable, could be recovered or resuscitated by addition of Rpf proteins in liquid medium (Biketov *et al.*, 2000). The five Rpf proteins in *M. tuberculosis* appear to show functional redundancy, because deletion of any individual gene does not compromise growth (Downing *et al.*, 2004; Tufariello *et al.*, 2004), whereas the single *rpf* gene in *M. luteus* is an essential growth factor (Mukamolova *et al.*, 2002b). Furthermore, there are differences in global gene expression between strains with different *rpf* mutations, so it is likely that they perform different functions and that their expression responds to different effector molecules (Downing *et al.*, 2004). The Rv3676-regulated RpfA protein is the most potent Rpf in *M. tuberculosis* (Mukamolova *et al.*, 2002a) and is among the most highly expressed genes *in vitro* and in infected macrophages (Triccas *et al.*, 2001) and thus Rv3676 may play a key role in regulating the persistence and reactivation of *M. tuberculosis*.

The transcriptional profiling experiments showed that expression of some genes is lower in the mutant compared with the wild type whereas the expression of others is enhanced. This suggests that Rv3676 acts positively on genes such as *rpfA*, but negatively on others, although some of the changes in transcription may result from indirect effects, such as the slow growth of the mutant. Analysis of the *M. tuberculosis* genome sequence using an Rv3676 binding site consensus derived from comparison of the DNA sequences of the upstream regions of the differentially expressed genes listed in Table 1 suggests that all of the genes that are controlled by Rv3676 have not been identified and many may be co-dependent on additional transcription factors that are only activated during an infection. Thus, there are potentially numerous other interesting genes with Rv3676 binding sites that are not represented in the array experiments. For example, the *icl* gene coding for isocitrate lyase has been implicated in persistence (McKinney *et al.*, 2000) and has an Rv3676 binding site upstream of the coding region with only one mismatch from the consensus sequence. Interestingly, in *Corynebacterium glutamicum* a CRP orthologue (GlxR) has been shown to bind to the promoter region of *aceB* (coding for isocitrate lyase) in the presence of cAMP to repress the glyoxylate bypass genes (Kim *et al.*, 2004). Also potential Rv3676 binding sites are present in some genes, e.g. *frdA*, *ndh* and *bioF2*, that are regulated by FNR in *E. coli* (Guest *et al.*, 1996).

The presence of a member of the CRP family of transcription factors in *M. tuberculosis* suggested that Rv3676 might respond to intracellular cAMP concentrations and it seems clear that cyclic nucleotides play a significant role in a number of metabolic processes in mycobacteria. Thus, a decrease in cAMP levels when glucose was added, the hallmark of catabolite repression, has been described for *M. tuberculosis* (Padh and Venkatasubramanian, 1976). It is also interesting to note that it has been reported that cAMP levels are much higher in mycobacteria, including *M. tuberculosis*, than in *E. coli*, and that extracellular cAMP goes on increasing even when stationary phase is reached suggesting that cAMP is continuously excreted into the medium (Padh and Venkatasubramanian, 1976). Certainly it is noteworthy that *M. tuberculosis* has 15 putative adenylate cyclases, implying that signal transduction involving cAMP is important in this bacterium (McCue *et al.*, 2000). Indeed, cAMP has been shown to regulate the expression of galactokinase in *Mycobacterium smegmatis* (Raychaudhuri *et al.*, 1998) and has been implicated in phospholipid synthesis in the same organism (Kaur and Khuller, 1995) and in the present study the expression of a number of genes involved in lipid metabolism was altered in the Rv3676 mutant. Interestingly in terms of infection, it has been reported that ingestion of live but not dead mycobacteria results in elevated cAMP levels which it was suggested could be

the cause of the inhibition of phagosome–lysosome fusion (Lowrie *et al.*, 1975) although evidence for this has not been forthcoming (Lowrie *et al.*, 1979).

Despite the conservation of four of the six residues involved in cAMP binding in *E. coli* CRP (Fig. 1) thus far there is no evidence that cAMP has any effect on the DNA binding activity of Rv3676 *in vitro*. This suggests that the two non-conserved cAMP binding amino acids are crucial for mediating enhanced DNA binding in the presence of cAMP. In *E. coli* CRP Ser129 interacts with N6 of the adenine ring of cAMP and Arg83 interacts with O2P of the cAMP phosphate. These observations do not unequivocally show that Rv3676 does not bind cAMP, as it may do so in a way that does not improve the affinity of Rv3676 for target DNA. This could perhaps explain why a cAMP-binding protein was not found in a previous study (Padh and Venkatasubramanian, 1980). An alternative signal molecule cGMP has been demonstrated in *M. smegmatis* (Bhatnagar *et al.*, 1984) but, like cAMP, cGMP did not improve Rv3676 DNA binding *in vitro*. Thus, the signal perceived by Rv3676 remains mysterious and future work should be directed towards identifying the environmental or metabolic signal perceived by Rv3676.

Experimental procedures

Strains and plasmids

Mycobacterium tuberculosis and *E. coli* strains and plasmids used are listed in Table 2.

Construction of a deletion mutant of Rv3676

Approximately 1.6 kb of DNA sequence from each side of the Rv3676 gene were amplified from *M. tuberculosis* genomic DNA with HotStarTaq (Qiagen) using the following primer pairs: for the 5' side Myc19 (5'-CTGGATCCTGATATTCGGC CATCAC-3') and Myc20 (5'-CTGGATCC-GTGTCGAGCCG TTCTAA-3') (bp 4114738–4116363), and for the 3' side Myc27 (5'-GCGGCCGCTACCGAGTCCGCAGATAGTC-3') and Myc28 (5'-GCGGCCGCTTGCCGGTGACAAGGTG CAG-3') (bp 4117258–4118860). The 5' fragments were cloned into the *Bam*HI site and 3' fragments into the *Not*I site of the suicide gene delivery vector p2NIL which is capable of replication within *E. coli* but lacks a mycobacterial origin of replication (Parish and Stoker, 2000). A hygromycin cassette was cloned into the *Kpn*I site of p2NIL to replace the Rv3676 gene. A *Pac*I fragment from pGOAL19 containing the *lacZ* and *sacB* genes was inserted to give the completed suicide delivery vector pLR2 (Table 2). This vector contains the *sacB* gene from *Bacillus subtilis* that causes lethality when expressed in *M. tuberculosis* making it an effective counterselectable marker, and a *lacZ* gene. The virulent *M. tuberculosis* strain H37Rv was transformed with pLR2 and selection was made for potential single cross-overs as kanamycin- and hygromycin-resistant colonies expressing the *lacZ* gene. These colonies were streaked onto sucrose plates containing hygromycin only. Twelve colonies with the expected phenotype (kanamycin-sensitive, sucrose-resistant and white due to the loss of the *lacZ* gene) were screened for potential double cross-overs by PCR using the following pairs of primers: for the 5' side, Myc166 (5'-TCGTTCTGGC CCTGATG-3') and Myc167 (5'-ACTTCGACGAGTAGGAC-3'), and for the 3' side, Myc168 (5'-CCACGCCTTGGAA GATT-3') and Myc169 (5'-TCACGCGAGACGGTGAA-3'). Southern blot analysis on genomic DNA was performed with probes derived using the following primer pairs: for the 5' side, Myc61 (5'-AATCACCTTGCTCCACA-3') and Myc62 (5'-TTTGGAGCCGTTCCAGCC-3'), and for the 3' side, Myc63 (5'-CAGATGGAACTGCCGAT-3') and Myc64 (5'-CCAATGG CACGCGTTGT-3'). DNA sequencing was performed using the primers Myc36 (5'-ACGTCTGGAGCAGATAC-3') in gene Rv3677 and Myc40 (5'-CCTGCATCGACGTCAAG-3') in gene Rv3675.

Complementation of the Rv3676 deletion mutation

Two complementing constructs were prepared by PCR of genomic DNA, a longer (pRv3676P_{long}: bp 4115784–4117351) one using primers Myc432 (5'-GAATTCAAGTCCAGCTCGCAGTA-3') located in gene Rv3674c and Myc433 (5'-ATCGATTTCGTCGAACACGTCTAC-3') in gene Rv3677c, and a shorter (pRv3676P_{short}: bp 4115784–4116181) one using Myc430 (5'-GAATTCTACGCTCGCTCGGAATG-3') located in gene Rv3675, and Myc433. Fragments were cloned into *Eco*RI and *Clal* sites of pKP186, an integrase-negative derivative of the integrating vector pMV306 (Stover *et al.*, 1992) kindly provided by Dr K.G. Papavinasundaram and sequenced completely to verify the absence of PCR-derived mutations. The plasmids were co-transformed into the Rv3676 null mutant along with plasmid pBS-int (kindly provided by Dr B. Springer) carrying the integrase gene necessary to achieve integration of the plasmid into the chromosome. The pBS-int plasmid lacks a mycobacterial origin of replication and is therefore lost from the bacterium.

In vitro growth determination

This was carried out in 1 l polycarbonate culture bottles (Techmate) in a Bellco roll-in incubator (2 r.p.m.) at 37°C in Dubos broth containing 0.05% (v/v) Tween supplemented with 0.2% (v/v) glycerol and 4% (v/v) Dubos medium albumin. Optical density readings on aliquots removed were taken at 600 nm.

Growth of bacteria in mouse macrophage cell culture

Bone marrow cells were extracted from the hind legs of 8-week-old adult female BALB/c mice as described previously (Tascon *et al.*, 2000). The cells were resuspended in IMDM + 5% FCS, 2 mM L-glutamine, 80 µM β-mercaptoethanol to which was added 10% by volume of supernatant from L929 cells that produce M-CSF. The cells were plated in six-well plates and incubated at 37°C and 5% CO₂ atmosphere. At day 2 the cells were washed with fresh prewarmed medium. Fresh medium was added to the plates containing the adherent bone marrow macrophage cells. The cells were cultured for a further 3 days and at day 5 they were infected for 6 h at a ratio of 2:1 cells:acid fast bacilli. After infection the medium was removed and replaced with fresh medium. The bone marrow macrophages were lysed with 2% saponin and incubated for 1 h at 37°C. Growth was determined by viable counts on Middlebrook 7H11 agar plates containing Middlebrook OADC supplement at days 0 (6 h post infection), 4, 7 and 11 post infection. The numbers of colony forming units (cfu) were determined after the plates had been incubated at 37°C for approximately 20 days for the wild type and after approximately 35 days for the Rv3676 mutant.

In vivo growth characteristics of the Rv3676 mutant in a mouse model of TB infection

The wild type and Rv3676 mutant of *M. tuberculosis* H37Rv were grown as rolling cultures in Dubos broth (as above) to mid-exponential phase. Each strain was diluted in phosphate-buffered saline to give a suspension of approximately 10⁶ cfu ml⁻¹ and 0.2 ml of these suspensions were inoculated intravenously into 6- to 8-week-old female BALB/c mice. The infection was monitored by removing the lungs and spleens of three to five infected mice at intervals. The tissues were homogenized by shaking with 2 mm diameter glass beads in chilled saline with a Mini-Bead Beater (Biospec Products, Bartlesville, Oklahoma). Serial 10-fold dilutions of the resultant suspensions were plated onto Dubos 7H11 agar with Dubos oleic albumin complex supplement (Difco Laboratories, Surrey, UK). The numbers of cfu were determined after the plates had been incubated at 37°C for approximately 20 days for the wild type and after approximately 35 days for the Rv3676 mutant.

Transcription analysis using DNA microarrays

Bacteria were grown in Dubos medium (supplemented with 0.2% v/v glycerol, 4% v/v Dubos medium albumin) in roller bottles at 37°C. Growth was measured at OD₆₀₀ and bacteria were harvested at mid-exponential phase. Total RNA was extracted using a Hybaid RNA isolation kit (Hybaid). RNA was treated twice with RNase-free DNase (Roche) in the presence of 1 unit ml⁻¹ RNasin ribonuclease inhibitor (Promega), 20 mM sodium acetate, 10 mM magnesium chloride and 10 mM sodium chloride, and purified using RNeasy columns (Qiagen) between treatments. RNA was checked for DNA contamination by PCR. DNA microarray experiments were performed using a whole genome microarray of *M. tuberculosis* H37Rv prepared in the laboratory of Dr P. Butcher (St. George's Hospital Medical School, London). Fluorescently labelled cDNA copies of total RNA (5–10 µg) were generated by direct incorporation of Cy3- or Cy5-labelled dCTP (Amersham) using 6 µg of random hexamers together with 500 units Superscript RNase H⁻ reverse transcriptase (GibcoBRL), 1x first-strand buffer, 10 mM DTT, dNTPs (40 µM dCTP, 100 µM each of dATP, dGTP, dTTP) and 1.5 nmol Cy3 or Cy5 labelled dCTP. RNA and random primers were heated at 95°C for 5 min in a final volume of 11 µl, snap cooled before adding the remaining components. Incubation was at 25°C for 10 min, followed by 42°C for 90 min. The two labelled samples to be compared (Cy3 and Cy5) were combined and purified using MinElute columns (Qiagen) and the pellets resuspended in 12.5 µl of water, 4x SSC, 0.3% SDS, heated at 95°C for 2 min. Hybridization of microarray slides was performed under a coverslip as described (Wilson *et al.*, 1999) in hybridization chambers at 60°C for 16–24 h and washed in 1x SSC, 0.005% SDS for 2 min and in 0.06x SSC for 4 min. Microarray slides were scanned for fluorescence with an Axon 4000A microarray scanner, local background subtracted using the GenePix software and normalized equivalent readings were plotted using GeneSpring software (Silicon Genetics). Data were obtained from at least six slides, including dye swaps. To account for dye swap, the signal channel and control channel measurements for dye swap samples were reversed. Each gene's measured intensity (wild type) was divided by its control channel value (mutant) in each sample to give the ratio of expression; if the control channel were below 10 then 10 was used instead. If the control channel and the signal channel were both below 10 then no data was reported. The 50th percentile of all measurements was used as a positive control for each sample; each measurement for each gene was divided by this synthetic positive control. The percentile was calculated using only genes marked present. This normalizes each array so that the 50th percentile/median measurement (ratio) for each array is equal to 1 and ensures that any systematic effects are removed (caused by scanning, labelling, hybridization, etc.), enabling valid comparison between different arrays as each array is scaled/transformed to have the same median value. Genes were defined as being differentially regulated where there was a greater than twofold change in at least four of the hybridizations and where $P < 0.05$ by Student's *t*-test. The *t*-test was conducted on the six experiments as a group. To limit the list of genes it was arbitrarily limited to those with a 2.4-fold increase or decrease in expression.

Real-time quantitative PCR

Real-time quantitative PCR was carried out on the ABI Prism 7700 Sequence Detection system using the Taqman Universal PCR Master Mix (PE Applied Biosystems). The primers and the Taqman probes (carrying both a fluorophore and a quencher) were designed using the Primer Express software (PE Applied Biosystems). The forward *rpfA* primer was Myc562 (5'-CGTAAGCCCACCACATCCA-3'), the reverse primer was Myc563 (5'-CGAGTACTGCGCCGGTAAA-3') and the probe primer was Myc564 (5'-CGTCAGCGTCGCCAAG ATCGC-3'). The forward primer from *sigA*, the normalizer gene, was Myc598 (5'-TCGGTTCGCGCCTACCT-3'), the reverse primer Myc599 (5'-TGGCTAGCTCGACCTCTTCCCT-3') and the probe primer Myc600 (5'-TTGAGCAGCGCTAC CTTGCCG-3').

RT-PCR

Total RNA was used for RT-PCR as described by Papavinasundaram *et al.* (1997) but using Superscript II reverse transcriptase (Invitrogen). The primers used for the region upstream of *rpfA* were Myc477 (5'-TTACGGTGGCGTCCA CTCATA-3'), Myc478 (5'-CTCGCCGATAGCACGCCGAAC-3') and Myc486 (5'-GATAGACGGCCTGTCGGT-3') (see Fig. 5A).

Construction of reporter gene plasmids using the upstream region of *rpfA*

Two regions of the DNA sequence of the region upstream of *rpfA* were generated by PCR from *M. tuberculosis* genomic DNA using the primer pairs Myc486 (5'-TCTAGAGATAGA CGGCCTGTCGGT-3') and Myc487 (5'-AAGCTTGACGAGC CTCCCGAGACG-3') for the short promoter construct (bp 966133–965798), and Myc486 and Myc488 (5'-AAGCTTA CGTTAGGTAATTCCTCT-3') for the long promoter construct (bp 966133–965536). These fragments were cloned into the *Xba*I and *Hind*III sites of the polylinker in the *lacZ* transcriptional reporter plasmid pEJ414 (Papavinasundaram *et al.*, 2001) to make pRB125 (*prpfAP*_{short}) and pRB126 (*prpfAP*_{long}). These were verified by DNA sequencing.

Mutagenesis of CRP binding site in plasmids pRB125 and pRB126

This was performed using the Stratagene Quik Change mutagenesis kit using the primers Myc474 (5'-GCTAAG GCCATGTTACATTACCAACATAACGGAACGATAAC-3') and Myc475 (5'-GTTATCGTTCGGTTATGTTGGTAATGTAACAT GGCCTTAGC-3') to generate pRB127 (from pRB125, *prpfAP*_{short} mutated construct) and pRB128 (from pRB126, *prpfAP*_{long} mutated construct).

Transformation of plasmids into *M. tuberculosis*

Bacteria were grown in rolling bottles at 37°C and electro-competent cells were prepared as described by Papavinasundaram *et al.* (1998). Electroporation was performed as described by Jacobs *et al.* (1991) and colonies were selected on 7H11 agar plates containing kanamycin.

Preparation of cell-free extracts and assay for β -galactosidase reporter enzyme

Mycobacterium tuberculosis cultures were grown in Dubos medium in rolling bottles at 37°C and cell-free extracts and β -galactosidase assays were carried out as described by Papavinasundaram *et al.* (2001). For *E. coli* cultures grown at 37°C in L broth (tryptone, 10 g l⁻¹; yeast extract, 5 g l⁻¹, NaCl, 5 g l⁻¹) for 16 h, β -galactosidase activities were determined as described by Miller (1972).

Overproduction and purification of Rv3676

The Rv3676 open reading frame was amplified by PCR with appropriate primers (Myc249: 5'-GAATTCGTGGACGAGAT CCTGGCCAG-3' and Myc250: 5'-GAATTCCTCGCTCGG CGGGCCAGTC-3') containing 5' *Eco*RI restriction sites. The amplified DNA was ligated into the corresponding sites in pGEX-6P-1 to create pGS1644. The pGS1644 plasmid was then used as a template to amplify the Rv3676 coding region using primers (5'-CTGGGATCCCCGGAATTCCATGGACGA GATCCTG-3' and 5'-CCGTCATACCGAACCTCGAGAAG CTTATCGTCAGTCAG-3') containing engineered *Nco*I and *Xho*I restriction sites to allow ligation into the corresponding sites in pET32a (Novagen). The resulting plasmid (pGS1698; Table 2) encoded a TrxA-His₍₆₎-Rv3676 fusion protein. Incorporation of the *Nco*I restriction site resulted in the alteration of codon 1 of Rv3676 from GTG (Val) to ATG (Met). Expression of the TrxA-His₍₆₎-Rv3676 fusion protein was induced by the addition of IPTG (30 μ g ml⁻¹) to mid-exponential phase

(OD₆₀₀ of 0.4–0.6) aerobic cultures (25 ml) of *E. coli* strain JRG5250 (BL21λDE3 pGS1698; Table 2) in L broth at 37°C. Incubation was continued for a further 2 h at which point the bacteria were collected by centrifugation. The bacteria were suspended in a total volume of 5 ml of 10 mM Tris-HCl (pH 8.0) buffer containing 10 mM NaCl and then lysed by sonication. The lysate was clarified by centrifugation at 20 000 r.p.m. for 1 h and 2 ml aliquots were applied to nickel-loaded HiTrap Chelating Sepharose columns (1 ml) (Amersham). Bound fusion protein was eluted with a gradient of imidazole (0–500 mM, 20 ml in 20 mM sodium phosphate buffer, pH 7.4 containing 0.5 M NaCl).

Band shift assays

Myc657 (5'-GAATTCGACGGGATTGTCGTCCGA-3') and Myc658 (5'-GGATCCCACAATCGCCGGCAAGAA-3') were used for PCR with genomic DNA to generate the region upstream of the *rpfA* gene containing the putative Rv3676 binding site. This 200 bp DNA fragment (bp 966066–965867) was blunt-end cloned into plasmid pCR4Blunt-TOPO (Invitrogen) to produce plasmid pRB129 and verified by DNA sequencing. The Stratagene Quik Change mutagenesis kit with pRB129 as the template and the primers Myc474 (5'-GCTAAGGCCATGTTACATTACCAACATAACGGAACGAT AAC-3') and Myc475 (5'-GTTATCGTTCCGTTATGTTGGTA ATGTAACATGGCCTTAGC-3') was used to mutate the putative Rv3676 binding site in *rpfA* creating pRB130. DNA fragments containing the wild type and mutated *rpfA* promoter regions were generated by PCR amplification from plasmids pRB129 and pRB130, respectively, using oligonucleotide primers Myc657 and Myc658 (see above). The fragments were labelled by the inclusion of 0.5 μl (0.185 MBq) of [α -³²P]-dATP in each reaction; unincorporated radionucleotides were removed using a Qiaquick PCR clean-up kit (Qiagen). Samples of purified TrxA-His₍₆₎-Rv3676 fusion protein were incubated with the appropriate DNA fragment in binding buffer (20 mM Hepes, 5 mM MgCl₂, 50 mM potassium glutamate, 1 mM dithiothreitol, 30 μg ml⁻¹ herring sperm DNA, 500 μg ml⁻¹ bovine serum albumin, pH 8.0) for 10 min before separating free DNA and DNA:protein complexes by electrophoresis on 6% polyacrylamide gels, buffered with TBE. Where indicated a 40-fold molar excess of cold competitor DNA was included in the incubations. Also where indicated cAMP or cGMP was included in the binding reactions and in the polyacrylamide gels and buffers at a final concentration of 100 μM.

Statistical analysis

For *in vitro* growth measurements each point represents the mean ± the standard deviation of the mean of the OD₆₀₀ of the two samples of each strain. For the results from macrophage and mouse infections the results for each time point are the means of cfu determinations performed on organs from three macrophage infections or three mice infections, and the error bars show the standard deviations. The asterisk indicates that the result is statistically significantly different from that of the wild type by the two-tailed Student's *t*-test for groups of unequal variance ($P < 0.01$), as well as by single-factor analysis of variance ($P < 0.01$). For the microarray analysis, genes were defined as being differentially regulated where there was a greater than twofold change in at least four of the hybridizations and where $P < 0.05$ by Student's *t*-test. For the reporter gene assays each bar represent the mean of three assays on each sample ± the standard deviation of the mean.

Supplementary Material

Refer to Web version on PubMed Central for supplementary material.

Acknowledgments

We should like to thank John Guest for initial discussions, Mike Young for numerous consultations on *rpf* genes, Elaine Davis for providing the reporter gene vector pEJ414 and for help with the technique, Tanya Parish for providing plasmids p2NIL and pGOAL, K.G. Papavinasundaram and Bernhard Springer for providing plasmids pKP186 and pBS-int, Peter Artymiuk for discussion on cAMP binding, Natalie Garton for discussion on lipid metabolism, and Vangelis Stavropoulos and John Brennan for their help with infection experiments. We acknowledge BμG@S (the Bacterial Microarray Group at St. George's Hospital Medical School) and especially Philip Butcher, for the supply of the *M. tuberculosis* microarrays and advice, and The Wellcome Trust for funding the multicollaborative microbial pathogen microarray facility under its Functional Genomics Resources Initiative. Lisa Rickman was supported by a Medical Research Council research studentship and Carmen Menéndez by an EU Marie Curie fellowship (Contract No. HPMFCT-2002-016015). This work was supported at NIMR by the Medical Research Council and at Sheffield by the Biotechnology and Biological Science Research Council through a project grant (P19192).

References

- Berg OG, von Hippel PH. Selection of DNA binding sites by regulatory proteins. II. The binding specificity of cyclic AMP receptor protein to recognition sites. *J Mol Biol.* 1988; 200:709–723. [PubMed: 3045325]
- Bhatnagar NB, Bhatnagar R, Venkitasubramanian TA. Characterization and metabolism of cyclic guanosine 3' 5'-monophosphate in *Mycobacterium smegmatis*. *Biochem Biophys Res Commun.* 1984; 121:634–640. [PubMed: 6145417]
- Biketov S, Mukamolova GV, Potapov V, Gilenkov E, Vostroknutova G, Kell DB, et al. Culturability of *Mycobacterium tuberculosis* cells isolated from murine macrophages: a bacterial growth factor promotes recovery. *FEMS Immunol Med Microbiol.* 2000; 29:233–240. [PubMed: 11118902]
- Bloom BR, Murray CJ. Tuberculosis: commentary on a reemergent killer. *Science.* 1992; 257:1055–1064. [PubMed: 1509256]
- Busby S, Ebright RH. Transcription activation by catabolite activator protein (CAP). *J Mol Biol.* 1999; 293:199–213. [PubMed: 10550204]
- Cole ST, Brosch R, Parkhill J, Garnier T, Churcher C, Harris D, et al. Deciphering the biology of *Mycobacterium tuberculosis* from the complete genome sequence. *Nature.* 1998; 393:537–544. [PubMed: 9634230]
- Downing KJ, Betts JC, Young DI, McAdam RA, Kelly F, Young M, Mizrahi V. Global expression profiling of strains harbouring null mutations reveals that the five *rpf*-like genes of *Mycobacterium tuberculosis* show functional redundancy. *Tuberculosis.* 2004; 84:167–179. [PubMed: 15207486]
- Dubnau E, Fontan P, Manganelli R, Soares-Appel S, Smith I. *Mycobacterium tuberculosis* genes induced during infection of human macrophages. *Infect Immun.* 2002; 70:2787–2795. [PubMed: 12010964]
- Dye C, Scheele S, Dolin P, Pathania V, Raviglione MC. Consensus statement. Global burden of tuberculosis: estimated incidence, prevalence, and mortality by country. WHO Global Surveillance and Monitoring Project. *JAMA.* 1999; 282:677–686. [PubMed: 10517722]
- Gosset G, Zhang ZG, Nayyar SN, Cuevas WA, Saier MH. Transcriptome analysis of Crp-dependent catabolite control of gene expression in *Escherichia coli*. *J Bacteriol.* 2004; 186:3516–3524. [PubMed: 15150239]
- Green J, Scott C, Guest J. Functional versatility in the CRP-FNR superfamily of transcription factors: FNR and FLP. *Adv Microb Physiol.* 2001; 44:1–34. [PubMed: 11407111]
- Guest, JR.; Green, J.; Irvine, AS.; Spiro, S. The FNR modulon and FNR-regulated gene expression. In: Lin, EC.; Lynch, AS., editors. *Regulation and Gene Expression in Escherichia coli*. R.G. Landes & Co; Austin, TX: 1996. p. 317-342.
- Hingley-Wilson SM, Sambandamurthy VK, Jacobs WR Jr. Survival perspectives from the world's most successful pathogen, *Mycobacterium tuberculosis*. *Nat Immunol.* 2003; 4:949–955. [PubMed: 14515128]
- Jacobs WR Jr, Kalpana GV, Cirillo JD, Pascopella L, Snapper SB, Udani RA, et al. Genetic systems for mycobacteria. *Methods Enzymol.* 1991; 204:537–555. [PubMed: 1658570]

- Kaufmann SH. How can immunology contribute to the control of tuberculosis? *Nat Rev Immunol.* 2001; 1:20–30. [PubMed: 11905811]
- Kaur H, Khuller GK. Role of cyclic adenosine monophosphate in phospholipid synthesis in *Mycobacterium smegmatis* ATCC 607. *Lipids.* 1995; 30:345–349. [PubMed: 7609603]
- Kim H-J, Kim T-H, Kim Y, Lee H-S. Identification and characterization of *glxR*, a gene involved in regulation of glyoxylate bypass in *Corynebacterium glutamicum*. *J Bacteriol.* 2004; 186:3453–3460. [PubMed: 15150232]
- Korner H, Sofia HJ, Zumft WG. Phylogeny of the bacterial superfamily of Crp-Fnr transcription regulators: exploiting the metabolic spectrum by controlling alternative gene programs. *FEMS Microbiol Rev.* 2003; 27:559–592. [PubMed: 14638413]
- Kubica GP, Kim TH, Dunbar FP. Designation of strain H37Rv as the neotype of *Mycobacterium tuberculosis*. *Int J Syst Bacteriol.* 1972; 22:99–106.
- Lanzilotta WN, Schuller DJ, Thorsteinsson MV, Kerby RL, Roberts GP, Poulos TL. Structure of the CO sensing transcription activator CoxA. *Nat Struct Biol.* 2000; 7:876–880. [PubMed: 11017196]
- Lowrie DB, Jactett PS, Ratcliffe NA. *Mycobacterium microti* may protect itself from intracellular destruction by releasing cyclic AMP into phagosomes. *Nature.* 1975; 254:600–602. [PubMed: 165421]
- Lowrie DB, Aber VR, Jactett PS. Phagosome–lysosome fusion and cyclic adenosine 3′:5′-monophosphate in macrophages infected with *Mycobacterium microti*, *Mycobacterium bovis* BCG or *Mycobacterium lepraemurium*. *J Gen Microbiol.* 1979; 110:431–441. [PubMed: 220379]
- McCue LA, McDonough KA, Lawrence CE. Functional classification of cNMP-binding proteins and nucleotide cyclases with implications for novel regulatory pathways in *Mycobacterium tuberculosis*. *Genome Res.* 2000; 10:204–219. [PubMed: 10673278]
- McKinney JD, Honer zu Bentrup K, Munoz-Elias EJ, Miczak A, Chen B, Chan WT, et al. Persistence of *Mycobacterium tuberculosis* in macrophages and mice requires the glyoxylate shunt enzyme isocitrate lyase. *Nature.* 2000; 406:735–738. [PubMed: 10963599]
- Miller, JH. *Experiments in Molecular Genetics.* Cold Spring Harbor Laboratory Press; Cold Spring Harbor, NY: 1972. Assay of β-galactosidase; p. 352–355.
- Mukamolova GV, Kaprelyants AS, Young DI, Young M, Kell DB. A bacterial cytokine. *Proc Natl Acad Sci USA.* 1998; 95:8916–8921. [PubMed: 9671779]
- Mukamolova GV, Turapov OA, Young DI, Kaprelyants AS, Kell DB, Young M. A family of autocrine growth factors in *Mycobacterium tuberculosis*. *Mol Microbiol.* 2002a; 46:623–635. [PubMed: 12410821]
- Mukamolova GV, Turapov OA, Kazarian K, Telkov M, Kaprelyants AS, Kell DB, Young M. The *rpf* gene of *Micrococcus luteus* encodes an essential secreted growth factor. *Mol Microbiol.* 2002b; 46:611–621. [PubMed: 12410820]
- Padh H, Venkitasubramanian TA. Adenosine 3′,5′-monophosphate in *Mycobacterium phlei* and *Mycobacterium tuberculosis* H37Ra. *Microbios.* 1976; 16:183–189. [PubMed: 196160]
- Padh H, Venkitasubramanian TA. Lack of adenosine-3′,5′-monophosphate receptor protein and apparent lack of expression of adenosine-3′,5′-monophosphate functions in *Mycobacterium smegmatis* CDC 46. *Microbios.* 1980; 27:69–78. [PubMed: 6253767]
- Papavinasundaram KG, Movahedzadeh F, Keer JT, Stoker NG, Colston MJ, Davis EO. *Mycobacterial recA* is cotranscribed with a potential regulatory gene called *recX*. *Mol Microbiol.* 1997; 24:141–153. [PubMed: 9140972]
- Papavinasundaram KG, Colston MJ, Davis EO. Construction and complementation of a *recA* deletion mutant of *Mycobacterium smegmatis* reveals that the intein in *Mycobacterium tuberculosis recA* does not affect RecA function. *Mol Microbiol.* 1998; 30:525–534. [PubMed: 9822818]
- Papavinasundaram KG, Anderson C, Brooks PC, Thomas NA, Movahedzadeh F, Jenner PJ, et al. Slow induction of RecA by DNA damage in *Mycobacterium tuberculosis*. *Microbiology.* 2001; 147:3271–3279. [PubMed: 11739759]
- Parish T, Stoker NG. Use of a flexible cassette method to generate a double unmarked *Mycobacterium tuberculosis tlyA plcABC* mutant by gene replacement. *Microbiology.* 2000; 146:1969–1975. [PubMed: 10931901]

- Raychaudhuri S, Basu M, Mandal NC. Glutamate and cyclic AMP regulate the expression of galactokinase in *Mycobacterium smegmatis*. *Microbiology*. 1998; 144:2131–2140. [PubMed: 9720034]
- Russell DG. *Mycobacterium tuberculosis*: here today, and here tomorrow. *Nat Rev Mol Cell Biol*. 2001; 2:569–577. [PubMed: 11483990]
- Schultz SC, Shields GC, Steitz TA. Crystal structure of a CAP–DNA complex: the DNA is bent by 90 degrees. *Science*. 1991; 253:1001–1007. [PubMed: 1653449]
- Shleeva M, Mukamolova GV, Young M, Williams HD, Kaprelyants AS. Formation of ‘non-culturable’ cells of *Mycobacterium smegmatis* in stationary phase in response to growth under suboptimal conditions and their Rpf-mediated resuscitation. *Microbiology*. 2004; 150:1687–1697. [PubMed: 15184555]
- Stewart GR, Robertson BD, Young DB. Tuberculosis: a problem with persistence. *Nat Rev Microbiol*. 2003; 1:97–105. [PubMed: 15035039]
- Stover CK, de la Cruz VF, Bansal GP, Hanson MS, Fuerst TR, Jacobs WR Jr, Bloom BR. Use of recombinant BCG as a vaccine delivery vehicle. *Adv Exp Med Biol*. 1992; 327:175–182. [PubMed: 1295338]
- Tascon RE, Soares CS, Ragno S, Stavropoulos E, Hirst EM, Colston MJ. *Mycobacterium tuberculosis*-activated dendritic cells induce protective immunity in mice. *Immunology*. 2000; 99:473–480. [PubMed: 10712679]
- Triccas JA, Britton WJ, Gicquel B. Isolation of strong expression signals of *Mycobacterium tuberculosis*. *Microbiology*. 2001; 147:1253–1258. [PubMed: 11320128]
- Tufariello JM, Jacobs WR Jr, Chan J. Individual *Mycobacterium tuberculosis* resuscitation-promoting factor homologues are dispensable for growth *in vitro* and *in vivo*. *Infect Immun*. 2004; 72:515–526. [PubMed: 14688133]
- Wilson M, DeRisi J, Kristensen H-H, Imboden P, Rane S, Brown PO, Schoolnik GK. Exploring drug-induced alterations in gene expression in *Mycobacterium tuberculosis* by microarray hybridization. *Proc Natl Acad Sci USA*. 1999; 96:12833–12838. [PubMed: 10536008]

```

Rv3676: 1 VDEILARAGIFQGVPEPSAIAALTKQLQPVD 30
crp: 1 MVLGKPKQTDPTLEWFLSHCHIHK 23
Rv3676: 31 FPRGHTVFAEGEPGDRLYIIISGKVKIGRRAPDRENLLTIMGPSDMFGLSIFDPGPRT 90
crp: 24 YPSKSTLIHQEKAETLYIYVKGSAVAVLIKDEEGKEMILSYLNQGDFIGLGLFEEGQEE 83
Rv3676: 91 S--ATTITEVRAVSMRDALRSWIADRPEISEQLLRVLARLRRNNNLADLIFTDVP 147
crp: 84 SAWVRAKTACEVAEISYKK--FRQLIQVNPDIILMRLSAQMARLQVSEKVGNLAFLDVT 141
Rv3676: 148 GRVAKQLLQLAQR--FGTQEGGALRVTHDLTQEEIAQLVGASRETVNKALADFAHRGWI 204
crp: 142 GRIAQTLLNLAKQPDAMTHPDGMQIKI----TRQEIGQIVGCSRETVGRILKMLEQNL 197
Rv3676: 205 RLEGKSVLISDSERLARRAR 224
crp: 198 SAHGKTIVVYGTR 210

```

Fig. 1.

Amino acid sequence alignments of the product of gene Rv3676 of *M. tuberculosis* with the CRP of *E. coli*. The highlighted residues are those involved in cyclic nucleotide binding in *E. coli* CRP and those that are conserved in *M. tuberculosis* Rv3676. There is no conservation between the other two cyclic nucleotide binding residues, R83 in *E. coli* (T90 in *M. tuberculosis*) or S129 (N135 in *M. tuberculosis*). The amino acids (Arg180, Glu181 and Arg185) of *E. coli* CRP directly involved in DNA recognition are indicated by underlining.

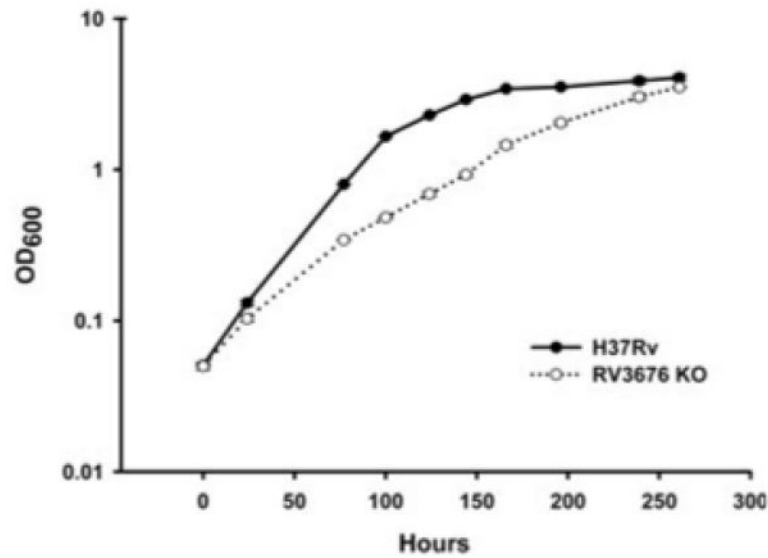


Fig. 2. Growth curves for the Rv3676 null mutant (Rv3676 KO) and the parental strain *M. tuberculosis* H37Rv during *in vitro* liquid culture in rolling bottles at 37°C in Dubos medium. Each strain was grown to an optical density at 600 nm of 0.5, diluted 10-fold into fresh medium, and each strain split into two cultures and growth monitored for each. Each point represents the mean \pm the standard deviation of the mean of the OD₆₀₀ of the two samples of each strain. The growth of the complemented strain containing either the pRv3676_{long} or the pRv3676_{short} plasmid was indistinguishable from that of the wild type (data not shown).

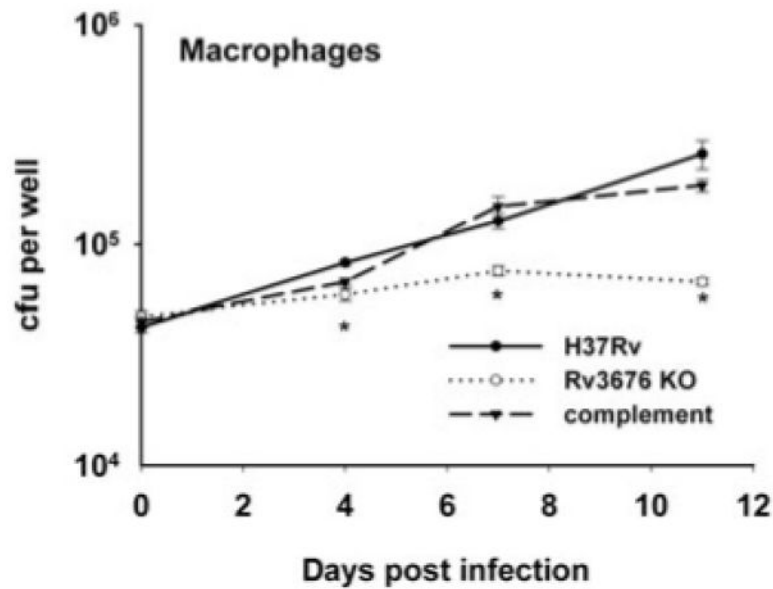


Fig. 3.

Growth of the Rv3676 deletion mutant (Rv3676 KO) is impaired in *in vitro* infections of mouse bone marrow-derived macrophages cells. Macrophages were isolated from BALB/c mice as described in the text and infected at a multiplicity of infection of one bacterium to two macrophages with each strain. The survival and multiplication of the *M. tuberculosis* strains were determined by cfu counts and are shown for the H37Rv wild type, the Rv3676 mutant and the complemented mutant strain. The results shown are with the pRv3676_{long} complement; similar results were obtained with pRv3676_{short}. The experiment was performed twice with similar results; the results of a representative experiment are shown. The results for each time point are the means of cfu determinations performed on triplicate infections, and the error bars show the standard deviations. The asterisk indicates that the result is significantly different from that of the wild type by the two-tailed Student's *t*-test for groups of unequal variance ($P < 0.01$), as well as by single-factor analysis of variance ($P < 0.01$).

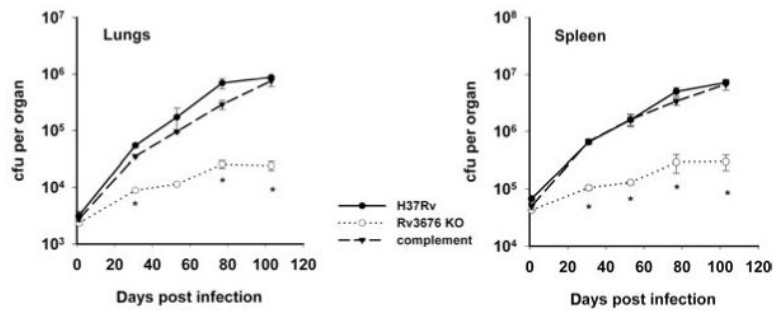


Fig. 4.

Growth of the Rv3676 null mutant (Rv3676 KO) is impaired in a mouse intravenous infection. BALB/c mice were inoculated intravenously with approximately 5×10^5 cfu of each strain. The survival and multiplication of the *M. tuberculosis* strains in the lungs and the spleen were determined by cfu counts and are shown for the wild-type strain H37Rv, the Rv3676 mutant and the complemented mutant strain. The results shown are with the pRv3676_{long} complement; similar results were obtained with pRv3676_{short}. The experiment was performed three times with similar results; the results of a representative experiment are shown. The results for each time point are the means of cfu determinations performed on organs from three mice, and the error bars show the standard deviations. The asterisk indicates that the result is significantly different from that of the wild type by the two-tailed Student's *t*-test for groups of unequal variance ($P < 0.01$), as well as by single-factor analysis of variance ($P < 0.01$).

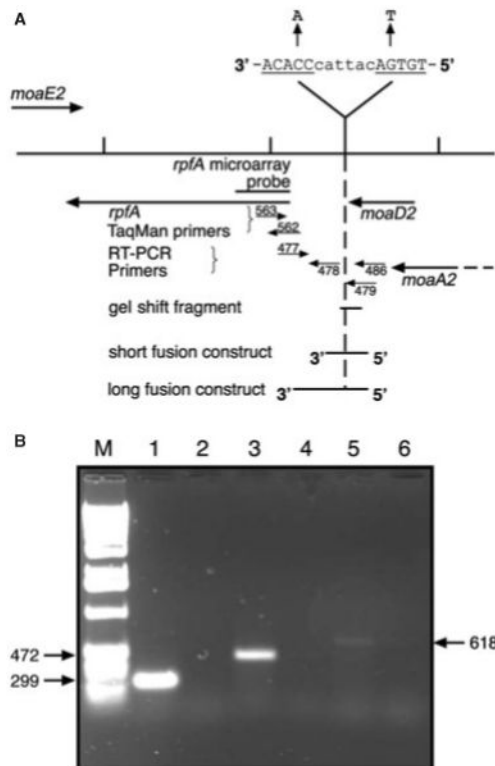


Fig. 5.

A. Diagram of the genomic region of *M. tuberculosis* containing the *rpfA* gene and adjacent genes, showing the position of the probe used for *rpfA* on the DNA microarray, the extent of the DNA fragment used for gel shift assays, and the position of the DNA fragments inserted into the *lacZ* reporter gene vector pEJ414. The numbers refer to the Myc oligonucleotides whose sequences are described in *Experimental procedures*. Also shown is the sequence of the putative Rv3676 binding site and the mutated version.

B. RT-PCR on the region upstream of the *rpfA* gene. This was performed on total RNA using the following primer pairs: lanes 1 and 2: Myc477 and Myc478; lanes 3 and 4: Myc477 and Myc479; lanes 5 and 6: Myc477 and Myc486. The reactions for lanes 2, 4 and 6 lacked reverse transcriptase. Lane M is a 1 kb ladder of molecular weight markers. The sizes of the RT-PCR products are shown in bp.

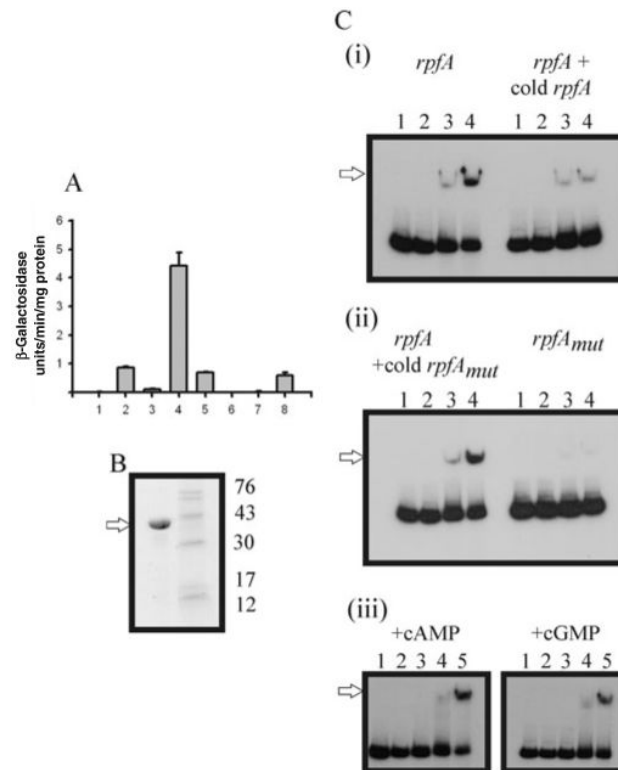


Fig. 6. Interaction of Rv3676 with the *M. tuberculosis rpfA* promoter

A. *In vivo* transcription of *rpfA*. β-Galactosidase assays were performed on cell extracts from *M. tuberculosis* strains containing constructs with the *rpfA* promoter linked to the *lacZ* reporter gene. The plasmid constructs were, in a wild-type strain: (1) pEJ414 vector only; (2) pRB125 (*prpfAP*_{short}); (3) pRB127 (*prpfAP*_{short}: CRP site mutated); (4) pRB126 (*prpfAP*_{long}); (5) pRB128 (*prpfAP*_{long}: CRP site mutated); and in the Rv3676 mutant: (6) pEJ414 empty control plasmid only; (7) pRB125 (*prpfAP*_{short}); (8) pRB126 (*prpfAP*_{long}). B. SDS-PAGE analysis of overproduced Trx-His₍₆₎-Rv3676 fusion protein. Coomassie blue-stained gel showing the isolated Trx-His₍₆₎-Rv3676 fusion protein (5 μg; arrowed) following affinity chromatography. The molecular mass markers and their sizes (kDa) are indicated.

C. Interaction of Rv3676 with the *rpfA* promoter. Radiolabelled unaltered *rpfA* promoter or *rpfA*_{mut} promoter with mutations in the putative Rv3676 binding site (TGTGAcattacCCACA → TGTTAcattacCAACA) was incubated with Trx-His₍₆₎-Rv3676 fusion protein before separation of Rv3676:*rpfA* complexes by gel electrophoresis. Where indicated unlabelled (cold) competitor DNA was present in 40-fold molar excess. When present cAMP or cGMP were added to the binding reactions and the polyacrylamide gels and buffers to a final concentration of 100 μM. Panels (i) and (ii): lanes 1, no Trx-His₍₆₎-Rv3676 fusion; lanes 2, 0.5 μM; lanes 3, 5 μM; lanes 4, 10 μM. Panel (iii): lane 1, no Trx-His₍₆₎-Rv3676 fusion; lane 2, 0.1 μM; lane 3, 0.5 μM; lane 4, 5 μM; lane 5, 10 μM. The Rv3676:*rpfA* complexes are arrowed.

Table 1

Genes with altered expression in the Rv3676 mutant compared with the parent.

ORF	Gene	Gene product	Fold change ^a	P-value	Possible Rv3676 binding site ^b
Rv0099	<i>fadD10</i>	Possible fatty-acid-CoA ligase	-3.00	0.033	
Rv0188		Possible transmembrane protein (upregulated at high temperature)	-6.11	0.047	GGTGGCAGCGAGCCCCA
Rv0483	<i>lprQ</i>	Probable conserved lipoprotein LPRQ	3.04	<0.001	TGTGTTTTGGTATCACA
Rv0867c	<i>rpfA</i>	Probable resuscitation promoting factor	6.36	<0.001	TGTGACATTACCCACA
Rv1387		PPE20 (repressed by low pH)	2.43	<0.001	TGGCAATGGCCGCTCA
Rv1592c		Conserved hypothetical (induced by hypoxia)	2.53	0.009	TCAGGGACCCGATCACC
Rv1623c	<i>cydA</i>	Probable cytochrome <i>d</i> ubiquinol oxidase subunit	-2.55	0.004	
Rv2428	<i>alpC</i>	Alkyl hydroperoxide reductase	3.24	0.01	GGTGTGATAATATCACC
Rv2485c	<i>lipQ</i>	Probable carboxylesterase	-2.46	0.001	TGTGATCCCTCGACACA
Rv2930	<i>fadD26</i>	Acyl CoA synthase	2.91	<0.001	GATGGCTTCAGACACA
Rv3136		PPE	2.79	0.005	TGCCATCGTCGTCGAA
Rv3219	<i>whiB1</i>	Putative regulatory protein	3.41	0.005	AGTGAGATAGCCCCACG
Rv3613c		Hypothetical protein (upregulated after starvation)	-3.14	0.023	
Rv3614c		Hypothetical (upregulated at low pH)	-5.76	0.029	
Rv3615c		Conserved hypothetical protein (upregulated at low pH)	-6.34	0.025	
Rv3616c		Conserved hypothetical protein (upregulated at low pH)	-7.26	0.058	AGTGACACCCGGTCACA

^aPositive values represent genes with enhanced expression in the wild type, negative values represent genes with enhanced expression in the Rv3676 mutant.

^bPutative Rv3676 binding sites located upstream of indicated genes or operons. Conserved bases are highlighted in bold.

Table 2

Bacterial strains and plasmids used in this study

	Relevant genotype or characteristics	Reference or source
Bacterial strain		
<i>M. tuberculosis</i> H37Rv	Wild-type virulent strain	Kubica <i>et al.</i> (1972)
<i>M. tuberculosis</i> Rv3676 H37Rv, deletion of Rv3676		This work
<i>M. tuberculosis</i> Rv3676 short complement	<i>M. tuberculosis</i> Rv3676, pRB131	This work
<i>M. tuberculosis</i> Rv3676 long complement	<i>M. tuberculosis</i> Rv3676, pRB132	This work
<i>E. coli</i> BL21ΔDE3	Lysogen of λDE3 carrying a copy of the T7 RNA polymerase under the control of the IPTG-inducible <i>lacUV5</i> promoter; Ap ^R	Novagen
<i>E. coli</i> JRG5250	BL21ΔDE3 pGS1698	This work
<i>M. tuberculosis</i> shuttle plasmids		
p2NIL	Suicide gene delivery vector, <i>oriE</i> , <i>kan</i>	T. Parish (Parish and Stoker, 2000)
pLR2	Final Rv3676 knock out p2NIL derivative (see <i>Experimental procedures</i>)	This work
pKP186	Integrase-negative derivative of the integrating vector pMV306	K.G. Papavinasandaram (unpublished); Stover <i>et al.</i> (1992)
pBS-int	Integrase-positive plasmid lacking a <i>M. tuberculosis</i> origin of replication	B. Springer (unpublished)
pRB131 (pRv3676 _{short})	Rv3676 complementing derivative of pKP186, short construct	This work
pRB132 (pRV3676 _{long})	Rv3676 complementing derivative of pKP186, long construct	This work
pEJ414	<i>lacZ</i> transcriptional reporter plasmid	E.O. Davis (Papavinasandaram <i>et al.</i> , 2001)
<i>E. coli</i> plasmids		
pET32a	An IPTG-inducible expression vector	Novagen
pCR4Blunt-TOPO	General cloning vector for blunt-ended PCR products; Ap ^R , Kan ^R	Invitrogen
pGS1698	A pET32a derivative encoding <i>M. tuberculosis</i> Rv3676 as a Trx-His ₆ -Rv3676 fusion protein; Ap ^R	This work
pRB129	A pCR4Blunt-TOPO derivative containing the <i>M. tuberculosis</i> <i>tpfA</i> upstream region between Myc657 and Myc658	This work
pRB130	As pRB129, with a mutated CRP binding site	This work
pGOAL19	<i>hyg</i> , P _{hsp60} - <i>sacB</i> , P _{A₆₅₈} - <i>lacZ</i> marker gene cassette, <i>amp</i> , <i>oriE</i>	T. Parish (Parish and Stoker, 2000)
pRB125 (pppAP _{short})	pEJ414 derivative containing the short <i>tpfA</i> upstream region	This work
pRB126 (pppAP _{long})	pEJ414 derivative containing the long <i>tpfA</i> upstream region	This work

	Relevant genotype or characteristics	Reference or source
pRB127	As pRB125, with a mutated CRP binding site	This work
pRB128	As pRB126, with a mutated CRP binding site	This work