

# Autocrine Transforming Growth Factor- $\beta$ 1 Activation Mediated by Integrin $\alpha$ V $\beta$ 3 Regulates Transcriptional Expression of Laminin-332 in Madin-Darby Canine Kidney Epithelial Cells

Jose V. Moyano,\* Patricia G. Greciano,\* Mary M. Buschmann,\* Manuel Koch,<sup>†</sup> and Karl S. Matlin\*

\*Department of Surgery, Committee on Cell Physiology, and Committee on Molecular Pathogenesis and Molecular Medicine, The University of Chicago, Chicago, IL 60637; and <sup>†</sup>Institute for Oral and Musculoskeletal Biology, Dental School/Institute for Biochemistry II and Center for Molecular Medicine Cologne (CMMC) Medical Center, University of Cologne, D-50931 Cologne, Germany

Submitted June 21, 2010; Revised August 23, 2010; Accepted September 2, 2010  
Monitoring Editor: Alpha Yap

Laminin (LM)-332 is an extracellular matrix protein that plays a structural role in normal tissues and is also important in facilitating recovery of epithelia from injury. We have shown that expression of LM-332 is up-regulated during renal epithelial regeneration after ischemic injury, but the molecular signals that control expression are unknown. Here, we demonstrate that in Madin-Darby canine kidney (MDCK) epithelial cells LM-332 expression occurs only in subconfluent cultures and is turned-off after a polarized epithelium has formed. Addition of active transforming growth factor (TGF)- $\beta$ 1 to confluent MDCK monolayers is sufficient to induce transcription of the LM  $\alpha$ 3 gene and LM-332 protein expression via the TGF- $\beta$  type I receptor (T $\beta$ R-I) and the Smad2–Smad4 complex. Significantly, we show that expression of LM-332 in MDCK cells is an autocrine response to endogenous TGF- $\beta$ 1 secretion and activation mediated by integrin  $\alpha$ V $\beta$ 3 because neutralizing antibodies block LM-332 production in subconfluent cells. In confluent cells, latent TGF- $\beta$ 1 is secreted apically, whereas T $\beta$ R-I and integrin  $\alpha$ V $\beta$ 3 are localized basolaterally. Disruption of the epithelial barrier by mechanical injury activates TGF- $\beta$ 1, leading to LM-332 expression. Together, our data suggest a novel mechanism for triggering the production of LM-332 after epithelial injury.

## INTRODUCTION

Epithelial cells form selective barriers between the environment and the internal milieu of organs, including kidney, breast, skin, and intestine (Schock and Perrimon, 2002; Bryant and Mostov, 2008). The most important differentiated characteristic of epithelial cells is their apical–basal polarity. Within an epithelium, each cell is organized along an axis orthogonal to the surface of the epithelium such that the protein and lipid compositions of the apical, lateral, and basal plasma membrane domains are unique and organelles are distributed asymmetrically throughout the cytoplasm. Polarization is driven by the intrinsic activity of three polarization complexes as well as extrinsic spatial cues provided by adhesive interactions between adjacent cells and the underlying extracellular matrix (Jamora and Fuchs, 2002; Nelson, 2003, 2009). In normal epithelia, the matrix underlying the epithelium is organized into a basal lamina composed of interlocking

networks of laminins and collagen type IV, along with contributions from proteoglycans such as perlecan and other molecules (Yurchenco and Patton, 2009; Bruckner, 2010). Indeed, several studies have suggested that signals from assembled laminin are critical for correct orientation of the apical–basal axis and polarization of the cells (Eaton and Simons, 1995; O'Brien *et al.*, 2001; Li *et al.*, 2003; Yu *et al.*, 2005).

Laminins (LM) are a family of large heterotrimeric extracellular matrix proteins consisting of at least 15 members composed of combinations of five  $\alpha$ , three  $\beta$ , and three  $\gamma$  subunits (Miner and Yurchenco, 2004). Most laminins assemble into a prototypical cruciform structure in which the amino-terminal portion of each subunit forms the arms of the cross and a coiled-coil of all three chains forms the stem (Jones *et al.*, 2000; Miner and Yurchenco, 2004; Aumailley *et al.*, 2005). However, a subset of laminin molecules do not form the typical cruciform structure because their individual subunits are “headless,” lacking the amino-terminal polymerization domains (Jones *et al.*, 2000; Miner and Yurchenco, 2004; Aumailley *et al.*, 2005). Chief among these is LM-332 ( $\alpha$ 3 $\beta$ 3 $\gamma$ 2, formerly called laminin 5, kalinin, epiligrin, and nicein) (Miner and Yurchenco, 2004; Marinkovich, 2007). LM-332 consists of two splice variants distinguished by the length of their  $\alpha$  subunits. The  $\alpha$ A subunit has a molecular mass of approximately 190 kDa and lacks an amino-terminal polymerization domain, whereas  $\alpha$ B has a size and structure closer to that of other  $\alpha$  subunits. LM-3A32 (hereinafter referred to as simply LM-332) is more common than LM-3B32 and its functions are better understood (Marinkovich,

This article was published online ahead of print in *MBoC in Press* (<http://www.molbiolcell.org/cgi/doi/10.1091/mbc.E10-06-0523>) on September 15, 2010.

Address correspondence to: Jose V. Moyano ([jvmoyano@uchicago.edu](mailto:jvmoyano@uchicago.edu)).

© 2010 J. V. Moyano *et al.* This article is distributed by The American Society for Cell Biology under license from the author(s). Two months after publication it is available to the public under an Attribution–Noncommercial–Share Alike 3.0 Unported Creative Commons License (<http://creativecommons.org/licenses/by-nc-sa/3.0>).

2007). The  $\beta$ 3 subunit does contain a globular amino terminus resembling the polymerization domains of other more typical laminins, but there is conflicting evidence about its capacity to participate in intermolecular associations (Cheng *et al.*, 1997; Odenthal *et al.*, 2004; Yurchenco and Patton, 2009; Yurchenco and Wadsworth, 2004). The  $\gamma$ 2 subunit completely lacks a polymerization domain and is significantly shorter than the  $\gamma$ 1 laminin subunit found in most typical laminins. The  $\alpha$ 3,  $\gamma$ 2, and possibly  $\beta$ 3 subunits are sometimes proteolytically processed after secretion, influencing their functions (Ghosh and Stack, 2000; Goldfinger *et al.*, 2000; Aumailley *et al.*, 2003; Marinkovich, 2007).

LM-332 plays multiple roles in tissues. In normal skin, for example, LM-332 is a structural molecule linking the epidermis to the dermis through interactions with integrin  $\alpha$ 6 $\beta$ 4 in hemidesmosomes (Jones *et al.*, 1998). It has similar functions in other tissues subjected to mechanical strain including other stratified squamous epithelia, the amnion, and the cornea (Marinkovich, 2007). Absence of LM-332 in the skin due to mutation leads to the severe blistering disease junctional epidermolysis bullosa (Masunaga, 2006). Under conditions of epithelial injury, LM-332 has more dynamic functions that include stimulating migration of epithelial cells into damaged areas (Nguyen *et al.*, 2000; Frank and Carter, 2004; Marinkovich, 2007). This process has been most extensively studied in keratinocytes, where the stable adhesions mediated through integrin  $\alpha$ 6 $\beta$ 4 are modulated by additional interactions of LM-332 with integrin  $\alpha$ 3 $\beta$ 1 (Hamill and McLean, 2005; Sehgal *et al.*, 2006; Margadant *et al.*, 2009). The latter localizes to focal complexes and focal adhesions where it facilitates migration through small Rho-family GTPase signaling and interaction with the actin cytoskeleton (Hamelers *et al.*, 2005). In the kidney, our laboratory observed the induction of LM-332 along with the integrin  $\alpha$ 3 subunit during tubular epithelial regeneration after ischemic injury, but the signals regulating reexpression and direct role of LM-332 in the regenerative process are not understood (Zuk and Matlin, 2002). In addition to these functions in normal epithelia, LM-332 expression is up-regulated in a variety of carcinomas, including those of the skin and stratified squamous epithelium of the oral mucosa, as well as the epithelia of the digestive tract, respiratory tract, and cervix; and down-regulated in others, including carcinomas of the breast and prostate (Marinkovich, 2007). In at least some of these cases, aberrant regulation of LM-332 expression is correlated with tumor progression (Giannelli and Antonaci, 2000; Marinkovich, 2007; Guess and Quaranta, 2009).

Our laboratory is interested in deciphering how laminins and laminin assembly affect the polar morphogenesis of epithelial cells. We recently reported that, in addition to the network-forming laminin-511, Madin-Darby canine kidney (MDCK) cells synthesize, secrete, and deposit LM-332 only when subconfluent and incompletely polarized and then cease synthesis as soon as confluence and full polarity are achieved (Mak *et al.*, 2006). Here, we explore the control of LM-332 synthesis in MDCK cells and report that expression is transcriptionally regulated by endogenous TGF- $\beta$ 1 through activation and signaling mechanisms dependent upon the epithelial barrier.

## MATERIALS AND METHODS

### Cell Culture

Stock cultures of MDCK cells (type II, Heidelberg isolate, passages 7–35) were cultured in Dulbecco's minimal essential medium (high glucose; Invitrogen, Carlsbad, CA) supplemented with 5% (vol/vol) fetal bovine serum (FBS; Hyclone-Fisher, Rockford, IL) and 10 mM HEPES-KOH, pH 7.3, as described previously (Matlin *et al.*, 1981). For studies under serum-free conditions, stock

cultures were adapted over four passages in successively higher proportions of ExCell hormone-supplemented MDCK cell medium (M3803; Sigma-Aldrich, St. Louis, MO) containing 10 mM L-glutamine, 10 mM HEPES-KOH, pH 7.3, and 1 $\times$  antibiotic/antimycotic mixture (15240-104; Invitrogen). For passaging of cells in serum-free medium, trypsin was neutralized with 1 mg of soybean trypsin inhibitor per ml of trypsin (25300; Invitrogen) in ExCell. The absence of TGF- $\beta$ 1 in the ExCell medium was confirmed by enzyme-linked immunosorbent assay (ELISA; see *Results*).

For most experiments, MDCK cells were grown on Transwell permeable supports (2.4 cm in diameter, 0.4- $\mu$ m pore size; 3412, Corning Life Sciences, Lowell, MA) at a seeding density of  $8 \times 10^4$  cells/cm<sup>2</sup> with 1.5 ml of medium in the upper chamber and 2.5 ml in the lower chamber. Under these conditions, initial confluence was achieved after 2–3-d culture and saturation density after 4 d.

For wound-healing experiments, confluent MDCK monolayers grown on Transwell supports were scratched multiple times with a plastic pipet tip, taking care not to break the filter; cells were then rinsed with media and placed in an incubator at 37°C for an additional 6 h before analysis.

### Antibodies and Reagents

Antibodies used in this study are listed in Table 1.

Recombinant human TGF- $\beta$ 1 was purchased from PeproTech (100-21, Rocky Hill, NJ) reconstituted in 10 mM citric acid, pH 3.0, at a final stock concentration of 1  $\mu$ g/ml according to the manufacturer's instructions, and stored at –20°C. Under these conditions, ELISA confirmed that it was completely activated (see *Results*). SB431542, a selective inhibitor of the TGF- $\beta$  type I receptor (T $\beta$ R-I) kinase (activin receptor-like kinases ALK4, -5, and -7) was purchased from Tocris Bioscience (1614; Ellisville, MO) and was stored at a concentration of 5  $\mu$ M in dimethyl sulfoxide (DMSO) at –20°C. All other chemicals were of reagent grade.

### Extraction and Analysis of Endogenous Extracellular Matrix

For analysis of endogenous extracellular matrix proteins deposited by MDCK cells, cells were cultured on Transwell supports for various times, washed twice with phosphate-buffered saline (PBS) without divalent cations (PBS–), and removed from the substratum by incubation with 20 mM NH<sub>4</sub>OH for ~20 min at 37°C. The residual extracellular matrix attached to the support was washed extensively with PBS– and then extracted with Laemmli sample buffer [60 mM Tris-HCl, pH 6.8, 10% sucrose (wt/vol), 2% SDS, and 0.08% bromophenol blue], reduced with 50 mM dithiothreitol (DTT), heated at 95°C for 3 min, and alkylated with 5  $\mu$ l of 0.5 M iodoacetamide per ~30- $\mu$ l sample for 20 min at 37°C before gel electrophoresis. Sample loading on SDS gels was normalized to culture surface area. Separated proteins were transferred to polyvinylidene difluoride (PVDF) membranes and analyzed by Western blotting (see below).

### Cell Surface Biotinylation

The polarity of the T $\beta$ R-I was determined by differential biotinylation of apical and basolateral surfaces. MDCK cells grown on filters to confluence (day 4) were washed twice with PBS supplemented with 0.5 mM MgCl<sub>2</sub> and 0.9 mM CaCl<sub>2</sub> (PBS+) and then once with biotinylation buffer (BTB; 10 mM triethanolamine, 150 mM NaCl, 2 mM CaCl<sub>2</sub>, and 0.5 mM MgCl<sub>2</sub>, pH 9.0) (Gottardi *et al.*, 1995). Either the apical or the basolateral membrane was labeled by incubation with 0.5 mg of sulfo-NHS-biotin/ml BTB (21217; Pierce Chemical, Rockford, IL) in PBS+ on ice for 30 min. Cultures were then washed twice with DMEM followed by two washes with PBS+ and extracted with radioimmunoprecipitation assay buffer (50 mM Tris, pH 7.5, 150 mM NaCl, 1% IGEPAL-CA630, 0.5% deoxycholate, and 0.1% SDS) supplemented with protease (11836153001; Roche Diagnostics, Indianapolis, IN) and phosphatase (P5726; Sigma-Aldrich) inhibitor cocktails and 10 mM glycine. Extracts were clarified by brief microcentrifugation, and the protein concentration in the supernatants was determined by bicinchoninic acid assay (23227; Pierce Chemical). Equal amounts of protein were incubated overnight with 60  $\mu$ l of a 1:1 (vol/vol) slurry of streptavidin-agarose beads (20347; Pierce Chemical) in RIPA buffer. The beads were then washed three times with RIPA buffer, and bound biotinylated proteins were solubilized by adding 2 $\times$  Laemmli sample buffer, reducing with DTT, and heating at 95°C for 3 min. Samples were resolved by SDS gel electrophoresis and Western blotted with a 1:1000 dilution of anti-T $\beta$ R-I antibody (see below; Table 1).

### Analysis of Newly Synthesized Proteins by Metabolic Labeling

Biosynthesis of LM-332 chains was measured by metabolic labeling of cultures with 100  $\mu$ Ci of [<sup>35</sup>S]Met/Cys (NEG072; Perkin Elmer Life and Analytical Sciences, Boston, MA) in DMEM without L-Met/Cys (D0422; Sigma-Aldrich) for 20 min at 37°C. Cells were then extracted with RIPA buffer supplemented with protease and phosphatase inhibitor cocktails. Extracts were clarified by brief microcentrifugation, and supernatants were immunoprecipitated with a 1:100 dilution of anti-LM-332 (9LN5; Table 1) followed by incubation with protein A-Trisacryl beads (20338; Pierce Chemical). Immune complexes were extracted from the beads with 2 $\times$  Laemmli sample buffer, reduced, and heated at 95°C for 3 min before gel electrophoresis and autoradiography.

**Table 1.** Antibodies

Antigen	Name	Species	Conc ( $\mu\text{g/ml}$ )	Source/catalog no.
LM-332	9LN5	Rabbit polyclonal	4.0	M. Koch <sup>a</sup>
LM-332	4104	Rabbit polyclonal	4.0	M. Koch <sup>a</sup>
Laminin $\beta$ 3	Anti-Kalinin B1	Mouse monoclonal	0.5–1.25	BD Biosciences (San Diego, CA), 610423 <sup>b</sup>
Smad 2	Anti-Smad 2	Rabbit polyclonal	1.25	Invitrogen, 51-1300
Smad 3	Anti-Smad 3	Rabbit polyclonal	1.25	Invitrogen, 51-1500
Phospho-Smad 2 (Ser465/467)	Anti-phospho Smad2 A5S	Rabbit monoclonal	1:1000 (supernatant)	Millipore, 04-953
Phospho-Smad 3 (P-Ser423/425)	Anti-phospho Smad 3	Rabbit monoclonal	0.2–0.5	Cell Signaling Technology (Danvers, MA), 9520
Smad 4	Anti-Smad 4 (clone B.8)	Mouse monoclonal	1–8	Santa Cruz, 7966
T $\beta$ R-I	Anti-T $\beta$ R-I (H-100)	Rabbit polyclonal	0.2–1	Santa Cruz, 9048
T $\beta$ R-I	Anti-T $\beta$ R-I	Rabbit polyclonal	0.1	Cell Signaling Technology, 3712
Integrin $\alpha$ V $\beta$ 3	LM609	Mouse monoclonal	10	Millipore, mAb 1976Z
Tubulin (ascites)	Anti-tubulin (clone TUB2.1)	Mouse monoclonal (ascites)	1:10,000	Sigma-Aldrich, T4026
Mouse IgG	Anti-mouse IgG-HRP	Goat polyclonal	0.4	Jackson Laboratories (West Grove, PA)
Rabbit IgG	Anti-rabbit IgG-HRP	Goat polyclonal	0.4	Jackson Laboratories
Mouse IgG	Anti-mouse IgG-Alexa 488	Goat polyclonal	4	Invitrogen
Mouse IgG	Anti-mouse IgG-Alexa 555	Goat polyclonal	4	Invitrogen
Rabbit IgG	Anti-rabbit IgG-Alexa 488	Goat polyclonal	4	Invitrogen
Rabbit IgG	Anti-rabbit IgG-Alexa 555	Goat polyclonal	4	Invitrogen

<sup>a</sup> University of Cologne, Germany.

<sup>b</sup> Discontinued by manufacturer.

### Western Blotting

For Western blotting, SDS gels were transferred to PVDF membranes (IPVH00010; Millipore, Billerica, MA) with a semidry apparatus (Bio-Rad Laboratories, Hercules, CA) at 15 V for 60 min. Membranes were blocked with 5% nonfat dry milk or 3% bovine serum albumin (BSA; for detection of phosphorylated proteins) in 10 mM Tris-Cl, pH 7.4, 150 mM NaCl, and 0.1% Tween 20 (TBS/T), and incubated with primary antibodies for 2 h at room temperature (RT). After 3 washes with TBS/T, membranes were incubated for an additional 1 h with a 1:1000 dilution with horseradish peroxidase-conjugated secondary antibodies (Table 1). Peroxidase was detected by chemiluminescence (170-5040; Bio-Rad Laboratories) on x-ray films (Denville Scientific, Metuchen, NJ). Bands were quantified by scanning and analyzed using ImageJ software (<http://rsbweb.nih.gov/ij/index.html>).

### Quantitative Real-Time Polymerase Chain Reaction (PCR)

Expressions of the  $\alpha$ 3,  $\beta$ 3, and  $\gamma$ 2 subunits of LM-332 mRNA and the  $\alpha$ 5 subunit of LM-511 mRNA were determined by quantitative real-time reverse transcriptase-PCR (qRT-PCR). Total RNA from cell lysates was extracted and purified using the RNeasy kit (QIAGEN, Valencia, CA), quantified by absorbance measurements, and checked for integrity by formaldehyde agarose gel electrophoresis. After DNase digestion using DNase I amplification grade (18068-015; Invitrogen), 900 ng of RNA was used as template for reverse-transcription PCR (RT-PCR) using random hexamer primers and the SuperScript III First-Strand kit (18080-400; Invitrogen). The resulting cDNAs were treated with RNase H (18201-071; Invitrogen), and 4  $\mu$ l was used for qRT-PCR using specific primers for the canine  $\alpha$ 3,  $\beta$ 3, and  $\gamma$ 2 LM chain sequences (QIAGEN) and a SYBR-Green master mix (QIAGEN). Amplification was carried out with a DNA Engine Opticon 2 thermal cycler (Bio-Rad Laboratories) using the following cycling conditions: 95°C for 15 min, 35 cycles of 94°C for 15 s, 55°C for 30 s, and 72°C for 40 s. Amplified PCR products corresponding to subconfluent cells were cloned into the TOPO 2.1 vector (K4500-01; Invitrogen), and entire amplicon sequences including the PCR primers determined by automated sequencing using primers flanking the cloning site. Location and identity of the amplicons in the canine genome were then verified by BLAST analysis. Serial dilutions of plasmids containing the cloned PCR products were used to establish a standard curve for quantification of unknown samples by interpolation. Samples and standards were analyzed in triplicate and in duplicate, respectively, in at least two separate experiments, and values were averaged.

### Transient Expression of SMAD Constructs

Recombinant constructs of dominant-negative (DN) Smad2, Smad3, and Smad4 cloned into the pRK5 vector (BD Biosciences Pharmingen, San Diego, CA) were provided by Dr. Rik Derynck (University of California, San Francisco, CA; Addgene plasmids 12624, 12626, and 12628, respectively; Zhang *et al.*, 1996). Subconfluent cultures of MDCK cells were trypsinized, and  $1 \times 10^6$

cells were transfected in suspension with 4  $\mu$ g of each plasmid by using an AMAXA nucleofector (Program A-024) according to the manufacturer's instructions (Lonza AG, Cologne, Germany). Transfection efficiency as estimated by parallel transfection of a green fluorescent protein expression construct was ~60%. After transfection, cells were plated at standard subconfluent density on permeable supports and analyzed for expression of LM-332 subunits by qRT-PCR and Western blotting.

### Immunofluorescence

Cells grown on permeable supports were washed twice with PBS+ and fixed with 3% formaldehyde (FA) for 20 min at RT. Fixed cells were washed twice with PBS-, and unreacted FA was quenched with fresh 0.1% NaBH<sub>4</sub>/PBS- for 15 min at RT. After washing twice with PBS-, cells were permeabilized with cold 0.1% (wt/vol) Triton X-100/PBS- for 4 min and again washed twice with PBS-. Nonspecific binding sites were blocked with 10% (vol/vol) goat serum in PBS- for at least 1 h at RT and washed twice with PBS-. At this stage, the permeable membranes were sliced out of the plastic support and cut into four pieces. Primary antibodies (Table 1) were diluted in blocking solution and briefly centrifuged. Cells were incubated with antibody by pipetting 100- $\mu$ l drops of the diluted antibody solution onto a sheet of Parafilm, placing the membrane pieces on top of the drops with the cells upright, and then adding an additional 100  $\mu$ l of dilute antibody to the top. Incubation was carried out for 2 h at RT in a moist chamber. Membranes were then transferred to 24-well plates, washed four times with PBS- (2 min each), and then incubated with secondary antibodies for 1 h as described above. After three washes with PBS-, filters were mounted in Mowiol-based mounting media (81381; Fluka, Buchs, Switzerland) containing 0.6% (wt/vol) DABCO as antifade agent and DAPI (4,6-diamidino-2-phenylindole; 1  $\mu$ g/ml) within a well formed on glass slides with dried nail polish. Samples were observed with a 63 $\times$  1.2W numerical aperture C-Apochromat UV-VIS objective using an LSM510 confocal microscope Carl Zeiss, Jena, Germany). Digital images were collected with AIM software (Carl Zeiss) and optimized with Photoshop (Adobe Systems, Mountain View, CA).

### Flow Cytometry

MDCK cells plated under subconfluent or confluent conditions in normal growth medium were washed twice with PBS- and detached by incubation with 4 mM EDTA, 1 mM EGTA in PBS- at 37°C. Cells were centrifuged at 250  $\times$  g and 4°C and washed twice with 1% BSA/PBS-. After counting, aliquots containing  $5 \times 10^5$  cells were incubated with 100  $\mu$ l of dilute anti- $\alpha$ V $\beta$ 3 integrin LM609 or nonspecific mouse antibodies for 30 min on ice. Cells were washed twice with 1% BSA/PBS-, resuspended in 100  $\mu$ l of 1% BSA/PBS containing anti-mouse immunoglobulin (Ig)G-Alexa-488 (1:200), and incubated on ice for 30 min. Cells were then washed twice with 1% BSA/PBS- and resuspended in 200  $\mu$ l of PBS-. The cell suspension was analyzed using a BD LSRII flow cytometer at the University of Chicago Flow Cytometry Facility (Chicago, IL).

### Chromatin Immunoprecipitation (ChIP)

MDCK stock cells were plated in T-75 flasks and cultured in normal growth medium for 6 h (subconfluent) or 4 d (confluent). The medium was then removed, and cells were fixed for 15 min at RT with 10 ml of DMEM containing 1% formaldehyde, followed by quenching with 125 mM glycine for 10 min. After two washes with cold PBS<sup>-</sup>, the fixed cells were scraped from the dish in 5 ml of PBS<sup>-</sup> containing 0.01% BSA (wt/vol) and 0.1 mM phenylmethylsulfonyl fluoride (PMSF). Samples corresponding to  $2 \times 10^6$  cells were centrifuged at  $200 \times g$  for 5 min at 4°C, resuspended in 500  $\mu$ l of "swelling buffer" (25 mM HEPES, pH 7.8, 1.5 mM MgCl<sub>2</sub>, 10 mM KCl, 0.1% IGEPAL-CA630, 1 mM DTT, and 0.5 mM PMSF, supplemented with protease and phosphatase inhibitor cocktails), and incubated on ice for 10 min. The resulting cell suspension was centrifuged at  $400 \times g$  for 10 min at 4°C and resuspended in 500  $\mu$ l of "sonication buffer" (50 mM HEPES, pH 7.9, 140 mM NaCl, 1 mM EDTA, 1% Triton X-100, 0.1% sodium deoxycholate, 0.1% SDS, and 0.5 mM PMSF, supplemented with protease and phosphatase inhibitor cocktails), and sonicated using a Misonix S4000 ultrasonic processor set at 30% amplitude (microtip) and 10 cycles of 20 s "on"/40 s "off." Subsequent steps were based on standard EZ-ChIP kit (17-371; Millipore) procedures, with the following modifications. Precleared chromatin:protein cross-linked complexes were incubated with 4  $\mu$ g of anti-Smad4-X (Santa Cruz Biotechnology, Santa Cruz, CA; Table 1), anti-RNA polymerase II, or control IgG overnight at 4°C on a rotary shaker. Cross-linking of eluted chromatin:protein complexes was reversed by incubation for 4.5 h at 65°C in a water bath and treated with proteinase K. The resulting free, fragmented chromatin was column purified, and 8  $\mu$ l of the eluted DNA was amplified by touchdown-PCR (Korbie and Mattick, 2008) with a manual hot-start (using the primers described in Table 2) as follows: 95°C for 1.5 min followed by addition of 1  $\mu$ l of Ampliqaq polymerase (Invitrogen); 1.5 min at 95°C, amplification phase 1 consisting of 10 cycles: 95°C for 30 s, 64°C for 45 s (decreasing the annealing temperature 1°C every cycle; final temperature 54°C), and 72°C for 60 s; amplification phase 2 consisting of 25 cycles of 95°C for 30 s, 54 and 72°C for 60 s; and finally a termination phase at 72°C for 5 min. Ten microliters of the PCR products was mixed with 6 $\times$  loading sample buffer, resolved by 2% agarose gel electrophoresis and analyzed using a GelDoc (Bio-Rad Laboratories). Positive samples were sequenced at the University of Chicago Cancer Research Center DNA Sequencing Facility.

### Treatment with Blocking Antibodies and Peptides

Cells grown in ExCell were detached and  $1 \times 10^6$  cell aliquots were preincubated with 1  $\mu$ g of LM609 (anti- $\alpha$ V $\beta$ 3 integrin), nTGF- $\beta$ 1 (neutralizing active TGF- $\beta$ 1), or nonspecific mouse IgG in 300  $\mu$ l of ExCell medium for 30 min at RT on a rotary shaker. Cells were plated on Transwell permeable supports as described above in the presence of an additional 1  $\mu$ g of antibody in both the upper and lower chambers and incubated at 37°C. For peptide treatment, cells were preincubated as described above in the presence of 1 mM GRGDS peptide (RGD; 03-34-0027; EMD Chemicals, Gibbstown, NJ) or RGES (RGE; A5686; Sigma-Aldrich) and then for the entire experiment.

### Measurement of TGF- $\beta$ 1 Levels

The concentration of active and total TGF- $\beta$ 1 in culture media was determined by sandwich ELISA using the ELISA E<sub>max</sub> kit purchased from Promega (G7590; Madison, WI) in 96-well enzyme immunoassay/radioimmunoassay high-binding plates (3590; Corning Life Sciences) according to the manufacturer's instructions with the following modifications. Samples of culture media were collected in sterile tubes, briefly microcentrifuged, passed through a 0.45- $\mu$ m filter to remove cell debris, and snap-frozen until analysis.

**Table 2.** Oligonucleotides used for PCR and qRT-PCR

LM $\alpha$ 3-Fwd <sup>a</sup> & Rev <sup>b</sup>	QuantiTect Primer Assay QT01465975*
LM $\beta$ 3-Fwd & Rev	QuantiTect Primer Assay QT01116472*
LM $\gamma$ 2-Fwd & Rev	QuantiTect Primer Assay QT00898541*
LM $\alpha$ 5-Fwd & Rev	QuantiTect Primer Assay QT01450638*
SBE-Fwd	5'-ATG TAG GGA AAC TTC AGA CAT GC-3'
SBE-Rev	5'-ACT TCC TAC CTG ACA TGA GTC ACC-3'
GAPDH <sup>c</sup> -Fwd	5'-ACA GTC AAG GCT GAG AAC G-3'
GAPDH-Rev	5'-GGC ATT GCT GAC AAT CTT G-3'

\* Qiagen.

<sup>a</sup> Forward.

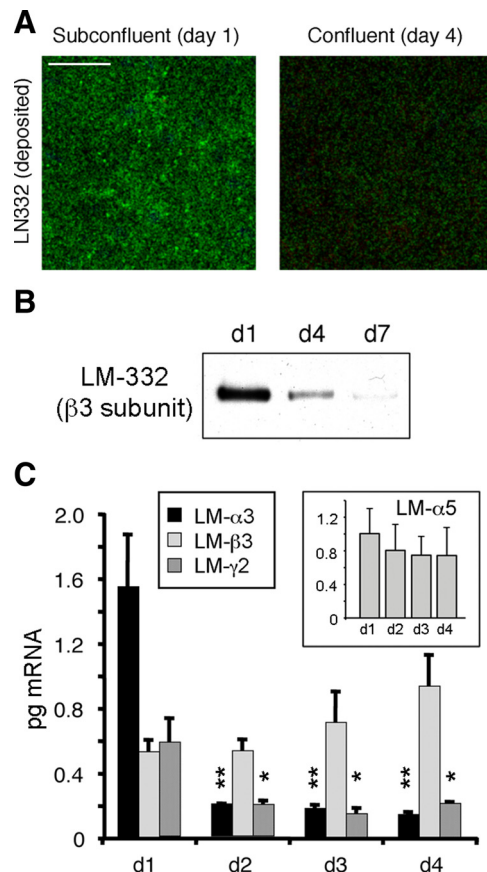
<sup>b</sup> Reverse.

<sup>c</sup> Glyceraldehyde-3-phosphate dehydrogenase.

The day of the assay, samples were divided in two, and one half was acidified with HCl to pH  $\sim$ 3.0 for 30 min at RT to activate TGF- $\beta$ 1 and then neutralized to pH  $\sim$ 7.5–8.0 with NaOH. Samples were then diluted 1:2–1:4 in the provided sample buffer and incubated for 2 h at RT with gentle shaking. The remainder of the assay was performed according to the ELISA kit protocol. Differential measurement of active and total TGF- $\beta$ 1 was accomplished by analyzing samples before and after the activating acidification, as this kit uses an antibody specific for the active form of TGF- $\beta$ 1. The amount of latent TGF- $\beta$ 1 was determined by subtracting the active fraction from the total fraction. Plates were read in a SpectraMax M5 plate reader (Molecular Devices, Sunnyvale, CA) at 450 nm.

### Statistical Analysis

Statistical significance was determined by one-way analysis of variance with Tukey's post hoc test for multiple comparisons, and a two-tailed unpaired *t*



**Figure 1.** Laminin-332 (LM-332) expression is regulated as a function of confluence. (A) LM-332 deposition only occurs in subconfluent cells. Subconfluent (day 1) or confluent (day 4) MDCK cells cultured on 0.4- $\mu$ m Transwell supports were immunostained for LM-332 with an anti- $\beta$ 3 subunit mAb (green). Confocal sections corresponding to the basal plane (deposited extracellular matrix [ECM]) are shown. Bar, 10  $\mu$ m. (B) Significant amounts of LM-332 are deposited into the substratum only in subconfluent (day 1) cultures. Cells plated on Transwell supports were removed by treatment with 20 mM NH<sub>4</sub>OH at the indicated time points (days 1–7). Deposited ECM proteins were extracted, resolved by SDS-polyacrylamide gel electrophoresis and Western-blotted for LM-332 with an anti- $\beta$ 3 mAb. (C) Laminin  $\alpha$ 3 and  $\gamma$ 2 subunit expression is transcriptionally regulated as a function of cell confluence. RNA from Transwell cultures was isolated at different time points (days 1–4) and analyzed by qRT-PCR using canine-specific primers. Inset, qRT-PCR for the  $\alpha$ 5 subunit of LM-511 (LM- $\alpha$ 5). The histograms represent the average abundance of mRNAs from three independent experiments expressed in picograms  $\pm$  SD. \*\**p* < 0.01 or \**p* < 0.05 relative to day 1 (d1) levels.

test for single comparisons using the Instat application (GraphPad Software, San Diego, CA). *P* values <0.05 were considered significant.

## RESULTS

### *LM-332 Expression Is Transcriptionally Regulated in MDCK Cells as a Function of Confluence*

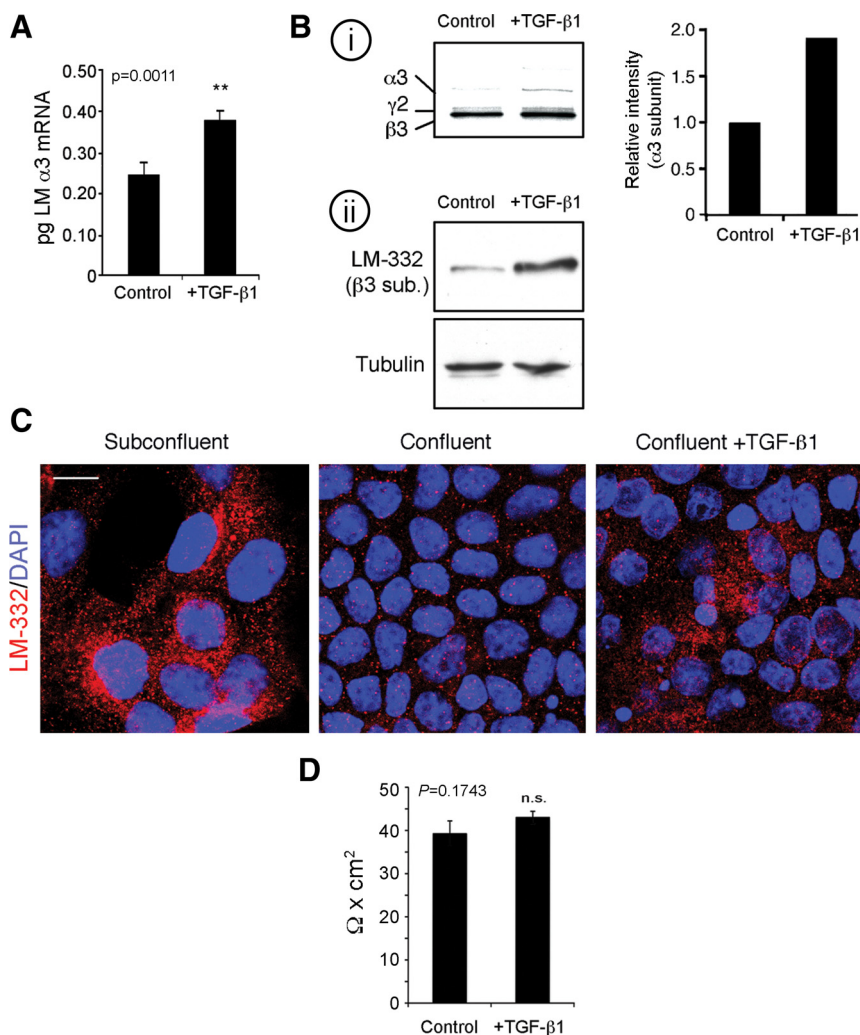
Previous results from our laboratory demonstrated that MDCK cell cultures synthesized and deposited LM-332 only when subconfluent, with little or no synthesis occurring once confluence was achieved (Mak *et al.*, 2006). To confirm and extend these findings, we examined MDCK cells cultured on Transwell permeable supports under conditions in which cultures are subconfluent 1 d after plating and reach full confluence after 3–4 d of growth.

As shown in Figure 1, LM-332 was visible in a basal optical section by confocal immunofluorescence microscopy only in a subconfluent (day 1) culture but not in a confluent (day 4) culture (Figure 1A). Similarly, LM-332 (as detected by Western blotting with an antibody against the  $\beta$ 3 subunit) was deposited onto the permeable support in significant amounts at day 1 of culture but was present in diminishing amounts at day 4 and, to an even lesser extent, at day 7, suggesting that not only was secretion and deposition of LM-332 reduced as confluence was achieved but also that any residual LM-332 was removed (Figure 1B).

To determine whether decreased production of LM-332 was regulated at the transcriptional level, RNA extracted from cultures at different degrees of confluence was examined by qRT-PCR using primers specific for the canine  $\alpha$ 3,  $\beta$ 3, and  $\gamma$ 2 laminin subunit mRNAs. As shown in Figure 1C, mRNAs for all three subunits were expressed at day 1, with levels of  $\alpha$ 3 mRNA the highest. By day 2, however, amounts of both the  $\alpha$ 3 and  $\gamma$ 2 mRNAs had significantly declined and remained low through day 4. Curiously, amounts of the  $\beta$ 3 mRNA, as well as the  $\alpha$ 5 subunit mRNA of LM-511, continued to be produced at approximately the same level independently of confluence. These observations not only demonstrated that expression of LM-332 is transcriptionally regulated as a function of confluence but confirm previous protein biosynthesis data indicating that only the  $\alpha$ 3 and  $\gamma$ 2 subunits are down-regulated as confluence is achieved, whereas the  $\beta$ 3 subunit continues to be synthesized (Mak *et al.*, 2006).

### *Exogenous TGF- $\beta$ 1 Stimulates LM-332 Expression in Confluent Cultures*

Analysis of the promoter region of the human laminin  $\alpha$ 3A gene identified previously several transcriptional regulatory elements including three AP1 (Fra2/JunD) binding sites, a TGF- $\beta$  response element, two KLF4 sites, and a noncanonical E-box that binds USF-1 (Virolle *et al.*,



**Figure 2.** Exogenous active TGF- $\beta$ 1 is sufficient to induce LM-332 expression in confluent cells. (A) TGF- $\beta$ 1 induces transcription of the laminin  $\alpha$ 3 subunit gene. Confluent MDCK cells untreated (control) or treated with 5 ng/ml active TGF- $\beta$ 1 for 6 h in serum-free medium (+TGF- $\beta$ 1) were collected and analyzed for laminin  $\alpha$ 3 subunit mRNA by q-RT-PCR. \*\**p* = 0.0011 (B) TGF- $\beta$ 1 induces LM-332 protein synthesis. i, untreated control (control) or TGF- $\beta$ 1-treated (+TGF- $\beta$ 1) confluent cultures were metabolically labeled with [<sup>35</sup>S]Met/Cys for 20 min and extracted with RIPA buffer. The extracts were immunoprecipitated with a polyclonal antibody against LM-332, and the immunoprecipitates were resolved by SDS-polyacrylamide gel electrophoresis and detected by autoradiography. The graph represents the intensities of the  $\alpha$ 3 bands in this experiment. ii, equal amounts of total protein from RIPA lysates were analyzed by Western blot for LM-332 using a mAb against the  $\beta$ 3 subunit with immunoblotting for tubulin as loading control. (C) Confocal immunofluorescence localization of LM-332 after TGF- $\beta$ 1 treatment. Subconfluent and confluent MDCK cell cultures without added exogenous TGF- $\beta$ 1, and TGF- $\beta$ 1-treated confluent MDCK cells were immunostained with a polyclonal antibody against LM-332 (red) and optical sections of a mid/basal plane visualized. Nuclei were stained with DAPI (blue). Bar, 10  $\mu$ m. (D) Trans epithelial resistance of MDCK cells is not affected by TGF- $\beta$ 1 treatment. Trans epithelial electrical resistance of confluent MDCK cultures grown on Transwell supports in either the absence or presence of exogenous active TGF- $\beta$ 1 was measured with a Millicell-ERS device. The experiment was repeated four times, and the average is shown. n.s., not statistically significant, *p* = 0.1743.

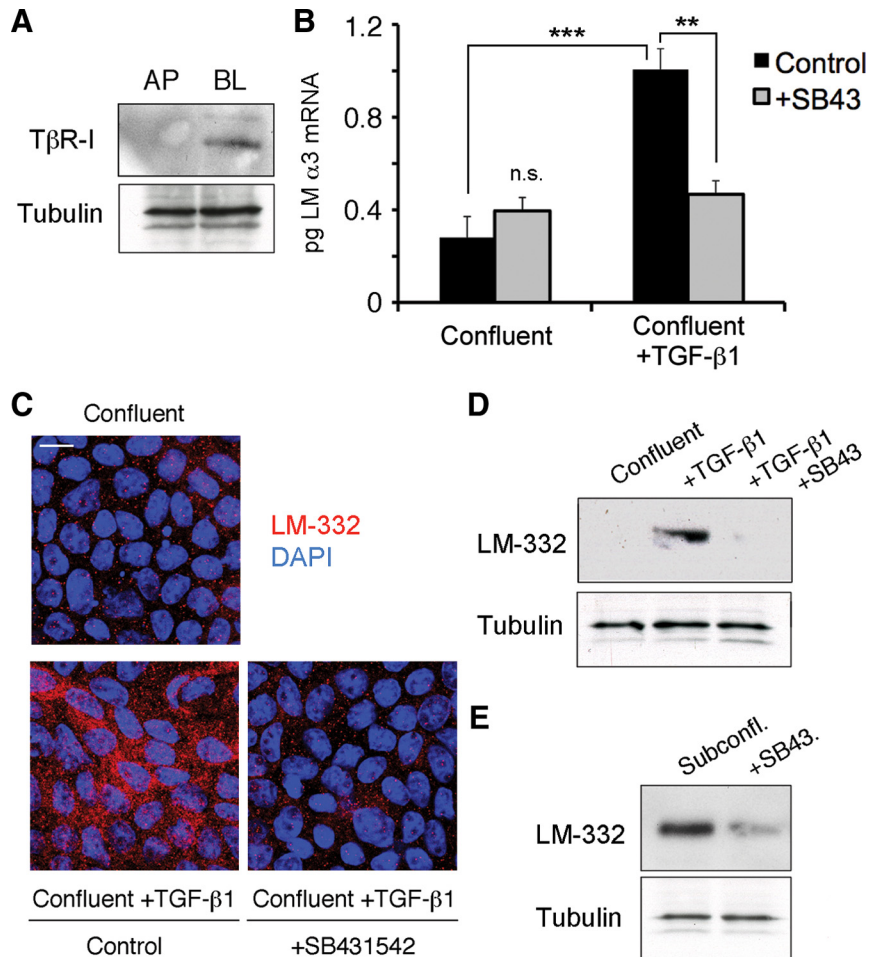
1998, 2002; Aberdam *et al.*, 2000; Miller *et al.*, 2001; Fitsialis *et al.*, 2008). Of these, the TGF- $\beta$  response element stood out because TGF- $\beta$  is well known as a regulator of extracellular matrix gene expression and elevated levels of TGF- $\beta$  have been observed in the kidney in response to ischemic injury, conditions where expression of LM-332 is also known to be increased (Basile *et al.*, 1998; Ledbetter *et al.*, 2000).

To test the involvement of TGF- $\beta$ 1 in regulation of LM-332 production in MDCK cells, exogenous activated TGF- $\beta$ 1 was added both apically and basolaterally to confluent (day 4) cultures of MDCK cells that normally do not express LM-332 (Figure 1). As illustrated in Figure 2A, addition of TGF- $\beta$ 1 for 6 h stimulated transcription of mRNA for the  $\alpha$ 3 subunit. In addition, increased synthesis of LM-332 was also evident in similarly treated cultures when analyzed either by metabolic-labeling and immunoprecipitation or Western blotting (Figure 2B). These findings were further supported by detection of LM-332 in treated cells by immunofluorescence (Figure 2C). Treatment with exogenous TGF- $\beta$ 1 did not compromise the epithelial barrier, as determined by measurement of transepithelial resistance (Figure 2D). Thus, under conditions in which MDCK cells do not normally express LM-332, TGF- $\beta$ 1 treatment induces LM-332 mRNA transcription and protein synthesis, suggesting a possible physiological role for TGF- $\beta$ 1 in the regulation of LM-332 expression.

### Activin-like Kinase Activity of T $\beta$ R-I Is Required for LM-332 Expression

TGF- $\beta$  normally signals through type I and II receptors that are believed to form a heterotetramer on the cell surface when ligated (Wrana *et al.*, 2008). In MDCK cells, the T $\beta$ R-I receptor was expressed on the basolateral surface of confluent cultures, as determined by domain-selective biotinylation and Western blotting (Figure 3A), confirming previous results (Murphy *et al.*, 2004). To ascertain whether this receptor is used by MDCK cells in the expression of LM-332, cells were preincubated with SB431542, a selective inhibitor of activin receptor-like kinase (ALK) superfamily members, including T $\beta$ R-I (Inman *et al.*, 2002), for 30 min before addition of exogenous activated TGF- $\beta$ 1 for 6 h to both the apical and basolateral chambers of a confluent Transwell culture of MDCK cells. As shown in Figure 3B, transcription of the laminin  $\alpha$ 3 gene, as determined by qRT-PCR, and synthesis of LM-332, as determined by immunofluorescence and Western blotting, was nearly abolished in samples treated with exogenous TGF- $\beta$ 1 and the T $\beta$ R-I receptor inhibitor relative to control cultures treated only with TGF- $\beta$ 1 and vehicle (Figure 3, B–D). Furthermore, when subconfluent cultures of MDCK cells, which synthesize LM-332 in the absence of exogenous TGF- $\beta$ 1 stimulation, were treated with the inhibitor under the same conditions, LM-332 synthesis was significantly diminished (Figure 3E). Overall, these results strongly suggest that the TGF- $\beta$ 1 receptor T $\beta$ R-I is

**Figure 3.** Kinase activity of the TGF- $\beta$  receptor type I (T $\beta$ R-I) is required for LM-332 expression. (A) T $\beta$ R-I is localized basolaterally in polarized MDCK cells. Confluent cultures of MDCK cells grown on permeable supports were biotinylated either apically (AP) or basolaterally (BL). Biotinylated proteins were captured on streptavidin-conjugated beads and immunoblotted with anti-T $\beta$ R-I antibodies. The unbound protein fraction was used for immunoblotting with an mAb against tubulin as loading control. These experiments were repeated twice with similar results. (B) Inhibition of T $\beta$ R-I signaling abolishes laminin  $\alpha$ 3 subunit mRNA expression. Confluent MDCK cells were pretreated with DMSO (control) or with 5  $\mu$ M T $\beta$ R-I kinase activity inhibitor SB431542 (+SB43) for 30 min. Then, cells were either incubated with or without exogenous TGF- $\beta$ 1 for 6 h and analyzed for laminin  $\alpha$ 3 subunit mRNA expression by qRT-PCR. n.s., not statistically significant; \*\*\* $p$  < 0.001; \*\* $p$  < 0.01 (C) LM-332 protein expression is also diminished after blocking T $\beta$ R-I signaling in TGF- $\beta$ 1-treated confluent MDCK cells. Confluent cultures of MDCK cells untreated or pretreated with SB431542 were then incubated with or without exogenous TGF- $\beta$ 1 for 6 h, and LM-332 expression was detected by immunofluorescence. Control/confluent, no TGF- $\beta$ 1 or SB431542; control/confluent + TGF- $\beta$ 1, treated with TGF- $\beta$ 1 but no SB431542; +SB431542/confluent+TGF- $\beta$ 1, treated with both TGF- $\beta$ 1 and SB431542. Bar, 10  $\mu$ m. (D) Production of LM-332 was examined by Western blotting of MDCK cell extracts using an anti- $\beta$ 3 subunit monoclonal from cultures treated as described in C. SB43, treated with SB431542. (E) LM-332 expression is also dependent on T $\beta$ R-I signaling in subconfluent cells. Subconfluent MDCK cell cultures without addition of exogenous TGF- $\beta$ 1 were incubated with or without SB431542 (SB43) for 18 h, and extracts were Western blotted for the  $\beta$ 3 subunit of LM-332.



mediating signals leading to the expression of LM-332 in MDCK cells.

**TGF- $\beta$ 1 Signaling through Smad2 and Smad 4 Is Responsible for Stimulating LM-332 Expression**

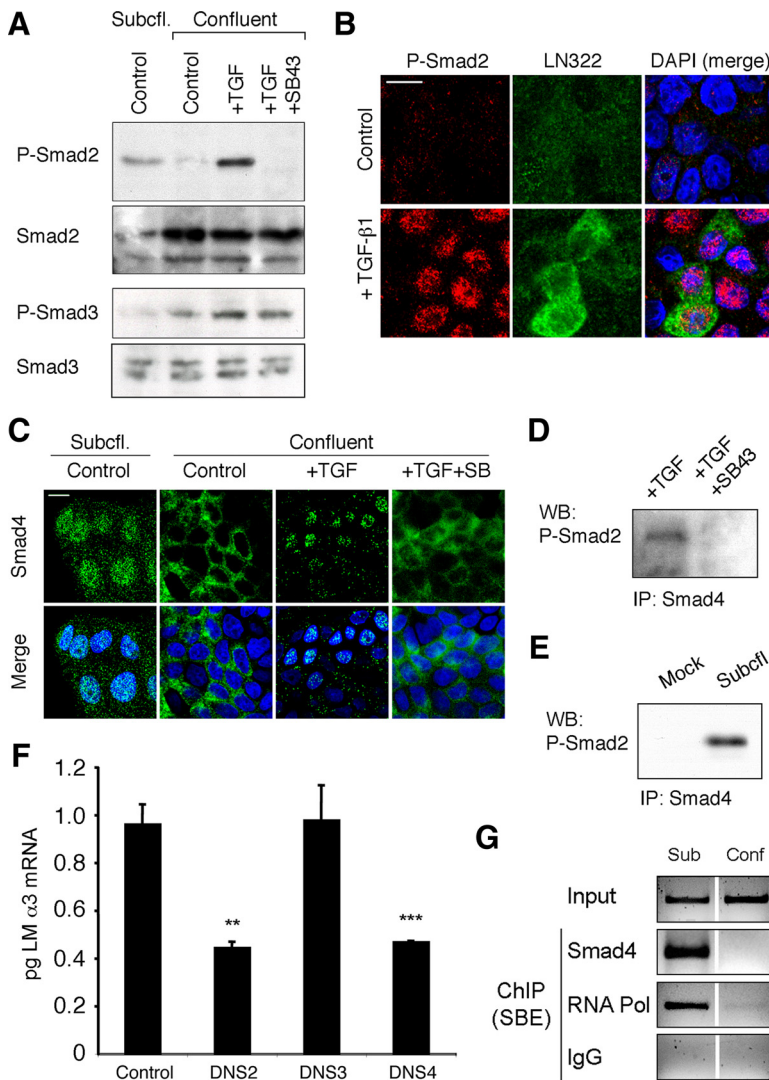
The major signaling pathway downstream of TGF- $\beta$ 1 and its type I and II receptors involves Smad proteins (Schmierer and Hill, 2007; Schilling *et al.*, 2008). However, TGF- $\beta$ 1 and its receptors are also known to signal through a variety of Rho-family small GTPases, several mitogen-activated protein kinase pathways, including those leading to extracellular signal-regulated kinase, p38, and c-Jun NH<sub>2</sub>-terminal kinase, and PP2A/p70<sup>S6K</sup> (Schilling *et al.*, 2008). It was therefore important to determine whether Smads are the primary signal transducers involved in TGF- $\beta$ 1-mediated LM-332 expression. To accomplish this, Smad phosphorylation, complex formation, and nuclear localization were examined.

Ligated TGF- $\beta$ 1 type I and II receptors phosphorylate the so-called "receptor-activated" or R-Smads Smad 2 and -3. As shown in Figure 4A, phospho-Smad2 was detected in subconfluent MDCK cell cultures expressing LM-332 but not in confluent cultures. Stimulation of confluent cultures with exogenous activated TGF- $\beta$ 1-stimulated phosphorylation of Smad2, whereas inhibition of T $\beta$ R-I with SB431542 blocked

this phosphorylation. In contrast, Smad3 phosphorylation was low in subconfluent cultures, and baseline levels of Smad3 phosphorylation were only modestly affected by exogenous TGF- $\beta$ 1 and the inhibitor of T $\beta$ R-I in confluent cultures (Figure 4A), suggesting that Smad2 but not Smad3 was involved in TGF- $\beta$ 1 signaling in MDCK cells under these conditions.

Activation of transcription by Smads requires formation of a complex between a phosphorylated R-Smad, such as Smad2 and Smad3, and Smad4, followed by translocation of the complex into the nucleus where it interacts with the promoter region of target genes. As illustrated in Figure 4B, phospho-Smad2 was almost undetectable in confluent MDCK cell cultures by immunofluorescence but increased in intensity and concentrated in nuclei upon stimulation with exogenous TGF- $\beta$ 1. Smad4 was also localized in nuclei in subconfluent cultures of MDCK cells known to express LM-332 and concentrated in nuclei in confluent cultures that had been treated with exogenous TGF- $\beta$ 1 (Figure 4C). This localization was significantly reduced upon preincubation with the T $\beta$ R-I inhibitor (Figure 4C).

To determine whether phospho-Smad2 and Smad4 interacted after TGF- $\beta$ 1 stimulation, cell extracts were immunoprecipitated with anti-Smad4 followed by Western blotting



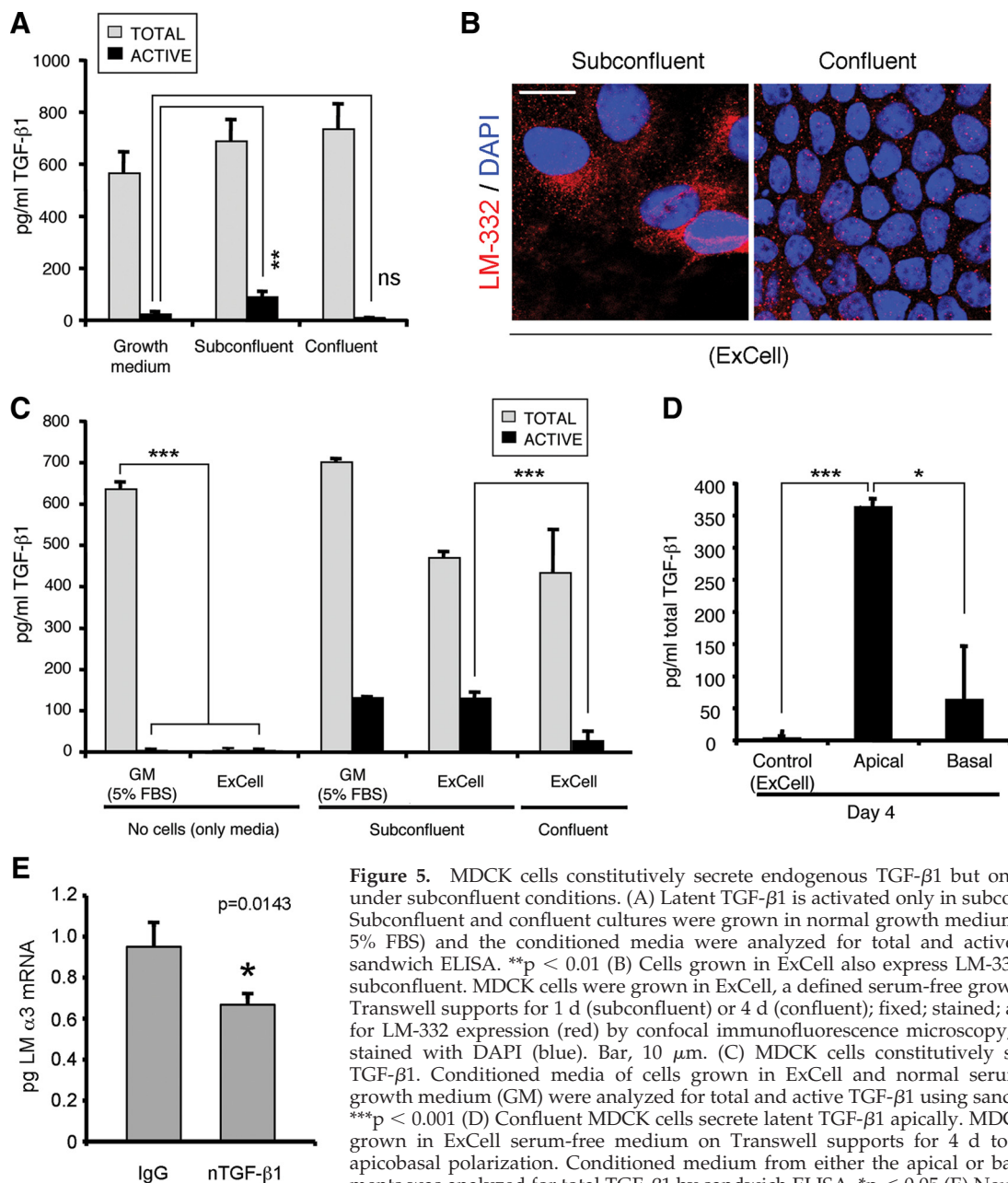
**Figure 4.** Phospho-Smad2 and Smad4 regulate LM  $\alpha$ 3 subunit gene transcription. (A) Differential phosphorylation of Smads. Subconfluent (Subcfl.) or confluent cultures either untreated (control) or treated with 5 ng/ml TGF- $\beta$ 1 for 6 h in the absence or presence of the T $\beta$ R-I inhibitor SB431542 (+TGF- $\beta$ 1 or +TGF- $\beta$ 1+SB43, respectively) were analyzed by Western blotting for phospho-Smad2 (P-Smad2), total Smad2, P-Smad3, and total Smad3. (B) Phospho-Smad2 is localized to the nuclei after TGF- $\beta$ 1 treatment in confluent cells. Untreated (control) or TGF- $\beta$ 1-treated confluent cells (+TGF- $\beta$ 1) were stained with antibodies against P-Smad2 (red) and LM-332 ( $\beta$ 3 subunit; green) and analyzed by confocal fluorescence microscopy. Nuclear staining with DAPI, blue. Bar, 10  $\mu$ m. (C) Smad 4 is also localized to the nuclei in subconfluent and TGF- $\beta$ 1-treated confluent cells. Subconfluent MDCK cell cultures without added exogenous TGF- $\beta$ 1 and confluent cultures either untreated (control) or treated with TGF- $\beta$ 1 in the presence or absence of SB431542 (SB) were stained with antibodies against Smad4 (green) and analyzed by confocal fluorescence microscopy. Nuclear staining with DAPI, blue. Bar, 10  $\mu$ m. (D) Phospho-Smad2 and Smad4 form a complex dependent on T $\beta$ R-I signaling. Confluent cultures treated with TGF- $\beta$ 1 to induce LM-332 expression in the absence or presence of the T $\beta$ R-I inhibitor SB431542 (+TGF or +TGF+SB43, respectively) were extracted in RIPA buffer. Extracts were immunoprecipitated with an anti-Smad4 antibody (mouse) and Western blotted with anti-P-Smad2 antibody (rabbit). (E) P-Smad2 and Smad4 also form a complex in subconfluent cells. Extracts of subconfluent MDCK cell cultures without added exogenous TGF- $\beta$ 1 were immunoprecipitated with a control IgG (mock) or with an anti-Smad4 antibody (mouse), and Western blotted for P-Smad2 (rabbit). (F) DN Smad2 and Smad4, but not Smad3, impairs  $\alpha$ 3 subunit transcription in subconfluent cultures. Subconfluent MDCK cell cultures were transiently transfected with DN-Smad2, DN-Smad3, or DN-Smad4, and  $\alpha$ 3 subunit mRNA expression was analyzed by qRT-PCR after 24 h. \*\*p < 0.05; \*\*\*p < 0.001 (G) Smad4 binds to an Smad binding element in the  $\alpha$ 3 subunit gene promoter. Subconfluent (6 h) or confluent (4 d) MDCK cell extracts were subjected to ChIP with anti-Smad4, RNA-polymerase II, or nonspecific antibodies (IgG). Enrichment of the SBE in the immunoprecipitated chromatin was determined by touch-down-PCR using primers specific for the  $\alpha$ 3 subunit promoter. Products were resolved by agarose gel electrophoresis (negative staining is shown) and compared with whole chromatin lysates (input).

with anti-phospho-Smad2. As shown in Figure 4D, Smad-4 and phospho-Smad2 coimmunoprecipitated upon stimulation of a confluent culture with TGF- $\beta$ 1, and this association was abolished when the culture was pretreated with the T $\beta$ R-I inhibitor. Similarly, coimmunoprecipitated phospho-Smad2 and Smad4 were also evident in subconfluent MDCK cells in the absence of exogenous TGF- $\beta$ 1 (Figure 4E), consistent with a role for Smad2/Smad4 signaling in LM-332 production in subconfluent cultures.

As a final proof that Smad signaling was responsible for TGF- $\beta$ 1-mediated LM-332 expression, dominant-negative constructs of Smad2, Smad3, and Smad4 were transiently expressed in MDCK cells. After culturing the transfected cells overnight under subconfluent conditions, RNA was

extracted and the amount of laminin  $\alpha$ 3 transcripts estimated by qRT-PCR. As shown in Figure 4F, transfection with Smad2 and Smad4 dominant-negative constructs reduced the levels of laminin  $\alpha$ 3 mRNA relative to controls, whereas transfection with dominant-negative Smad3 had no effect.

Previous studies have demonstrated that TGF- $\beta$ 1 activation of laminin  $\alpha$ 3 expression in keratinocytes and carcinoma cell lines occurs via binding of Smad4 to a Smad binding element (SBE) in the  $\alpha$ 3 gene promoter. To confirm that this is also the case in MDCK cells, ChIP was carried out with an antibody against Smad4 and PCR primers demarcating a 246-nucleotide upstream region of the canine laminin  $\alpha$ 3 gene. As shown in Figure 4G, ChIP from chromatin



**Figure 5.** MDCK cells constitutively secrete endogenous TGF- $\beta$ 1 but only activate it under subconfluent conditions. (A) Latent TGF- $\beta$ 1 is activated only in subconfluent cells. Subconfluent and confluent cultures were grown in normal growth medium (containing 5% FBS) and the conditioned media were analyzed for total and active TGF- $\beta$ 1 by sandwich ELISA.  $^{**}p < 0.01$  (B) Cells grown in ExCell also express LM-332 only when subconfluent. MDCK cells were grown in ExCell, a defined serum-free growth media, on Transwell supports for 1 d (subconfluent) or 4 d (confluent); fixed; stained; and analyzed for LM-332 expression (red) by confocal immunofluorescence microscopy; nuclei were stained with DAPI (blue). Bar, 10  $\mu$ m. (C) MDCK cells constitutively secrete latent TGF- $\beta$ 1. Conditioned media of cells grown in ExCell and normal serum-containing growth medium (GM) were analyzed for total and active TGF- $\beta$ 1 using sandwich ELISA.  $^{***}p < 0.001$  (D) Confluent MDCK cells secrete latent TGF- $\beta$ 1 apically. MDCK cells were grown in ExCell serum-free medium on Transwell supports for 4 d to achieve full apicobasal polarization. Conditioned medium from either the apical or basal compartments was analyzed for total TGF- $\beta$ 1 by sandwich ELISA.  $^{*}p < 0.05$  (E) Neutralization of

endogenous active TGF- $\beta$ 1 reduces LM  $\alpha$ 3 subunit expression. Subconfluent MDCK cell cultures grown in ExCell in the presence of 1  $\mu$ g of neutralizing antibody against active TGF- $\beta$ 1 (nTGF- $\beta$ 1) or IgG as negative control were analyzed for  $\alpha$ 3 subunit mRNA levels by qRT-PCR.  $^{*}p = 0.0143$ .



extracted from subconfluent cells that produce LM-332 and immunoprecipitated with anti-Smad4 or anti-RNA-polymerase II yields an appropriately-sized PCR product, whereas chromatin from confluent cells not producing LM-332 and nonspecific IgG controls do not. Sequencing of the PCR product confirmed that the region containing the SBE was immunoprecipitated and amplified (data not shown). Together, the results of this experiment and the analysis of Smad phosphorylation, nuclear localization, complex formation, and dominant-negative Smad expression strongly support the central involvement of Smad2 and Smad4 in TGF- $\beta$ 1-stimulated expression of LM-332.

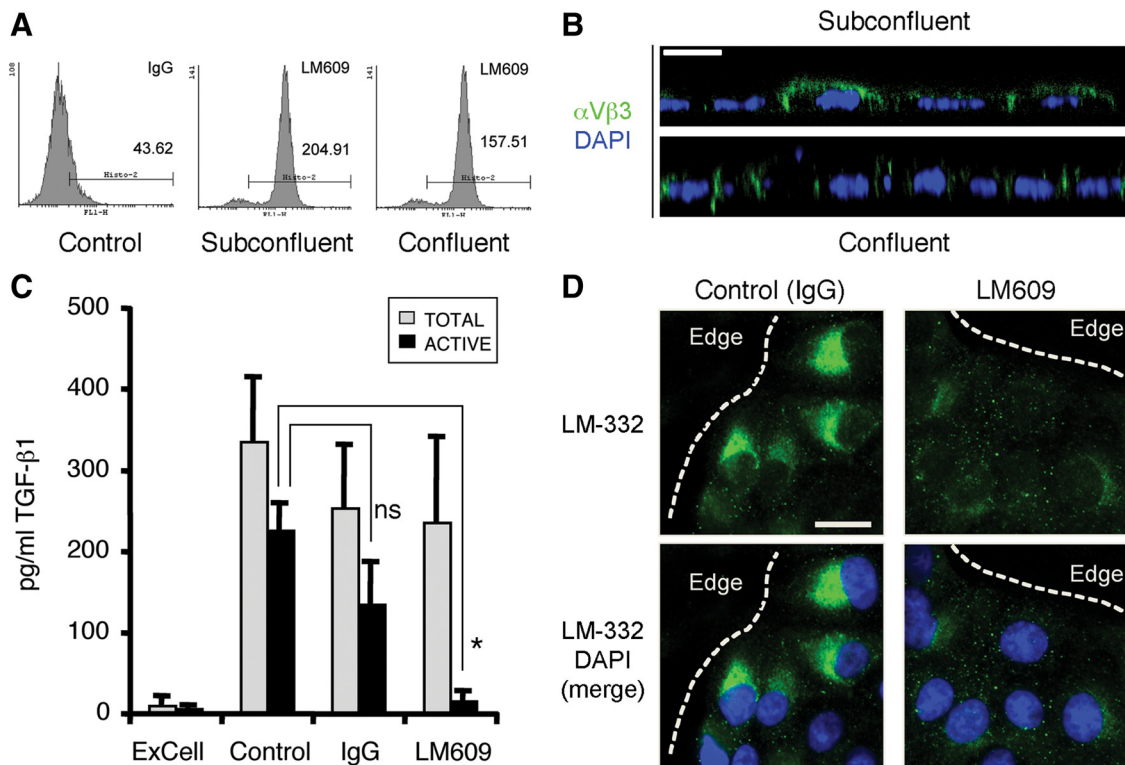
#### MDCK Cells Constitutively Secrete Latent TGF- $\beta$ 1 and Activate It Only under Subconfluent Conditions

In all previous experiments, MDCK cells were cultured in medium containing 5% FBS that presumably contains TGF- $\beta$ 1. Furthermore, this serum-containing medium was present in both the apical and basolateral chambers of Transwell cultures. Despite this, TGF- $\beta$ 1-stimulated expression of LM-332 only occurred under subconfluent conditions or when exogenous activated TGF- $\beta$ 1 was added to confluent cultures. TGF- $\beta$  is an unusual growth factor in that it is secreted in an inactive or "latent" form and must be acti-

vated to enable its binding to cell surface receptors and elicitation of downstream effects. For this reason, it seemed as though TGF- $\beta$ 1 contributed from the serum would have to be differentially activated in MDCK cells as a function of confluence if it was indeed the physiological stimulus of LM-332 expression.

To test this, serum-containing growth medium and conditioned medium from subconfluent and confluent cultures were analyzed by an ELISA capable of distinguishing active from inactive TGF- $\beta$ 1. As shown in Figure 5, TGF- $\beta$ 1 is indeed present in serum-containing MDCK cell growth medium but is almost completely inactive (Figure 5A). In contrast, conditioned medium taken from subconfluent cultures had a significant fraction of activated TGF- $\beta$ 1, whereas the medium from confluent cultures only contained inactive TGF- $\beta$ 1 (Figure 5A).

Although it was conceivable that MDCK cells depended upon exogenous TGF- $\beta$ 1 from serum to stimulate LM-332 expression, it was also possible that TGF- $\beta$ 1 was endogenously produced. To determine this, MDCK cells were grown in a commercial hormone-supplemented serum-free medium (ExCell), and production of LM-332 was analyzed. As shown in Figure 5B, subconfluent but not confluent MDCK cell cultures grown in ExCell in the absence of serum



**Figure 6.**  $\alpha$ V $\beta$ 3 integrins regulate TGF- $\beta$ 1 activation and LM-332 expression. (A) MDCK cells express integrin  $\alpha$ V $\beta$ 3 on the cell surface. Subconfluent and confluent cells were incubated with monoclonal anti- $\alpha$ V $\beta$ 3 (LM609) or mouse IgG (control), and analyzed by flow cytometry to determine cell surface expression levels. (B) Integrin  $\alpha$ V $\beta$ 3 is localized to the apical and lateral plasma membrane in subconfluent cells but is basolaterally polarized in confluent cultures of MDCK cells. Subconfluent and confluent (polarized) MDCK cell cultures grown in ExCell on Transwell supports were stained for  $\alpha$ V $\beta$ 3 integrins with the LM609 (green) and analyzed by confocal microscopy. XZ stacks (lateral views) are shown. Nuclei, blue. Bar, 10  $\mu$ m. (C) Integrin  $\alpha$ V $\beta$ 3 participates in TGF- $\beta$ 1 activation. MDCK cells were pretreated with a nonspecific antibody (IgG) or anti- $\alpha$ V $\beta$ 3 function blocking antibody (LM609) for 30 min and then grown for 18 h in ExCell (subconfluent cultures). The conditioned media was analyzed by sandwich ELISA to determine TGF- $\beta$ 1 activation. IgG, nonspecific immunoglobulin. n.s., not statistically significant; \* $p$  < 0.05 (D) Inhibition of  $\alpha$ V $\beta$ 3 integrin prevents LM-332 expression. Subconfluent MDCK cell cultures grown on Transwell supports in ExCell were pretreated with either anti- $\alpha$ V $\beta$ 3 function blocking antibody (LM609) or a nonspecific antibody (IgG), and after 18 h LM-332 (green) was detected by confocal immunofluorescence. The dotted line indicates the edge of an "island" of cells. Nuclei, blue. Bar, 10  $\mu$ m.

produce LM-332 detectable by immunofluorescence. When analyzed by ELISA, fresh ExCell medium completely lacked TGF- $\beta$ 1. However, conditioned ExCell medium from subconfluent and confluent cultures contained significant amounts of latent TGF- $\beta$ 1 presumably synthesized by MDCK cells (Figure 5C). Furthermore, because the medium analyzed was changed every day, and thus in contact with cells for not >1 d, these results suggested that synthesis of TGF- $\beta$ 1 by MDCK cells was not regulated as a function of confluence but was constitutive at all stages of culture growth. More importantly, ~25% of endogenous TGF- $\beta$ 1 was activated in medium from subconfluent cultures, whereas much less was activated in conditioned medium from confluent cultures (Figure 5C). Because confluent cultures of MDCK cells are fully polarized, with apical and basal chambers of the Transwell supports isolated by tight junctions between the cells, it was of interest to determine whether endogenous TGF- $\beta$ 1 was secreted in a polarized manner. Indeed, ELISA analysis of total TGF- $\beta$ 1 in apical and basal media from confluent ExCell cultures indicated that most TGF- $\beta$ 1 produced by MDCK cells was secreted into the apical chamber, confirming previous observations from others (Figure 5D; Murphy *et al.*, 2004). As a final confirmation that endogenous TGF- $\beta$ 1 was capable of stimulating LM-332 expression, subconfluent MDCK cells grown in ExCell were preincubated with a neutralizing TGF- $\beta$ 1 antibody (nTGF- $\beta$ 1) that specifically blocks the function of the active form, and laminin  $\alpha$ 3 mRNA expression was analyzed by qRT-PCR. As shown in Figure 5E, treatment with nTGF- $\beta$ 1, but not with a control IgG, significantly reduced  $\alpha$ 3 chain mRNA transcription, proving that endogenous active TGF- $\beta$ 1 is required for laminin  $\alpha$ 3 expression in MDCK cells.

Together, the results of the experiments described in this section demonstrate that MDCK cells constitutively synthesize and secrete TGF- $\beta$ 1 at all stages of confluence but only activate it in subconfluent cultures. Furthermore, this endogenous activated TGF- $\beta$ 1 is the physiological stimulator of laminin  $\alpha$ 3 expression.

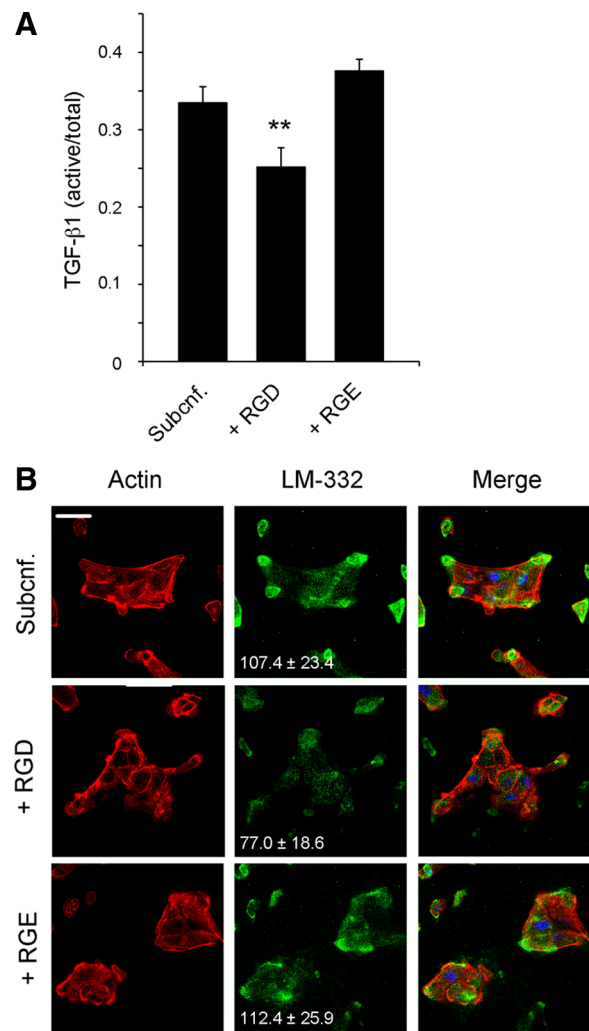
#### MDCK Cells Use Integrin $\alpha$ V $\beta$ 3 to Activate TGF- $\beta$ 1 in Subconfluent Cultures

The latency of TGF- $\beta$ 1 is due to its continued association with its propeptide (latency associated peptide [LAP]) after secretion. Activation has been postulated to occur through a variety of mechanisms including controlled proteolysis of LAP and possibly the latent TGF- $\beta$  binding protein (LTBP) by plasmin or other proteases including matrix metalloendoproteases (MMPs), interaction with thrombospondin, integrin binding, or some combination of these mechanisms (Dabovic and Rifkin, 2008). In particular, the LAP of TGF- $\beta$ 1 contains an integrin RGD binding site, and integrins such as  $\alpha$ V $\beta$ 6 have been implicated in TGF- $\beta$  activation (Dabovic and Rifkin, 2008). Because MDCK cells express integrin  $\alpha$ V $\beta$ 3, an RGD-binding integrin (Schoenenberger *et al.*, 1994), and possibly other  $\alpha$ V containing integrins (Teräsväinen and Manninen, University of Oulu, Oulu, Finland; personal communication), it was conceivable that this receptor was playing a role in TGF- $\beta$ 1 activation.

Initially, expression of  $\alpha$ V $\beta$ 3 was confirmed by flow cytometry and immunofluorescence using the LM609 monoclonal antibody (mAb) specific for the integrin. As shown in Figure 6A, flow cytometry detected  $\alpha$ V $\beta$ 3 on both subconfluent and confluent cells, although levels on confluent cells were slightly reduced (~4.7-fold vs. ~3.6-fold relative to controls). Expression was also evident in orthogonal (xz) sections of subconfluent and confluent cultures generated by

confocal immunofluorescence microscopy. As expected,  $\alpha$ V $\beta$ 3 was localized to the basolateral plasma membrane in confluent cultures, as reported previously (Schoenenberger *et al.*, 1994), but in subconfluent cultures is also present on the apical domain (Figure 6B).

The LM609 antibody is capable of blocking cell adhesion to vitronectin and fibronectin. To determine whether it also had an effect on TGF- $\beta$ 1 activation in MDCK cells, subconfluent ExCell cultures were pretreated with LM609 or a nonspecific IgG for 30 min, and TGF- $\beta$ 1 activation was determined by ELISA after 18 h. Under these conditions, LM609 dramatically inhibited TGF- $\beta$ 1 activation but not secretion (Figure 6C). To find out whether LM609 also blocked expression of LM-332, MDCK cells were cultured in ExCell in the presence of LM609 or control IgG. As shown in



**Figure 7.** TGF- $\beta$ 1 activation and LM-332 expression in subconfluent MDCK cells is regulated by RGD. (A) The RGD peptide inhibits TGF- $\beta$ 1 activation. Subconfluent MDCK cells were grown in ExCell for 18 h in the absence (Subcnf.) or presence of either RGD or RGE peptides (1 mM). The conditioned media were collected and analyzed for TGF- $\beta$ 1 activation by ELISA. Histograms represent the ratio of active versus total TGF- $\beta$ 1. \*\* $p$  < 0.01 (B) RGD inhibits LM-332 expression. Cell cultures corresponding to A were immunostained for LM-332 with a polyclonal antibody (green). Actin, red; nuclei, blue. The numbers indicate relative units of fluorescence ( $\pm$ SD) for the green channel (LM-332). Bar, 10  $\mu$ m.

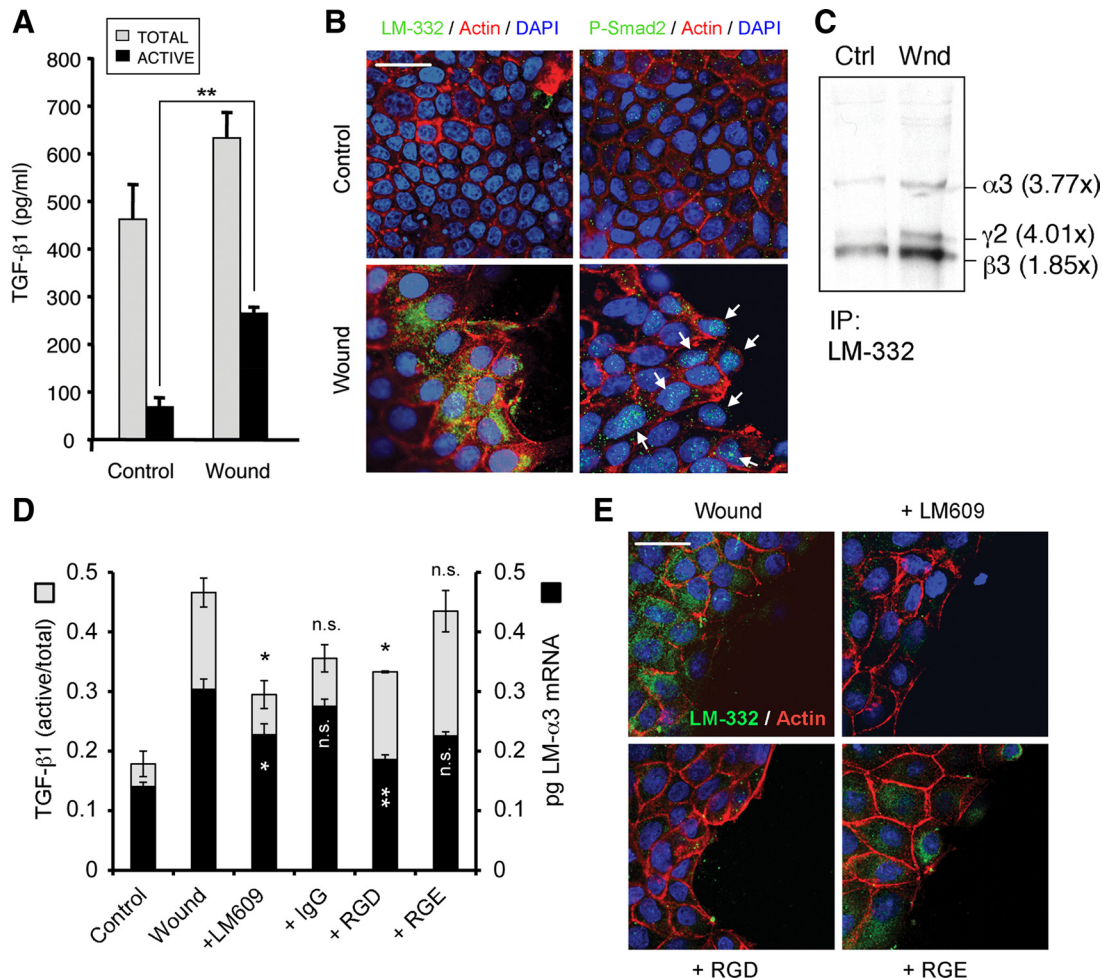
Figure 6D, treatment of subconfluent cultures with LM609 almost completely abrogated LM-332 expression.

Because  $\alpha V\beta 3$  integrin can bind LAP, which is an RGD-containing protein (Ludbrook *et al.*, 2003), we next treated subconfluent MDCK cell cultures with either soluble RGD or RGE peptides and measured TGF- $\beta 1$  activation and LM-332 production. As shown in Figure 7A, the presence of soluble RGD, but not RGE, significantly reduced TGF- $\beta 1$  activation. In a similar way, LM-332 expression was greatly diminished as shown by immunofluorescence (Figure 7B).

Overall, these experiments demonstrate that the RGD-binding integrin  $\alpha V\beta 3$  is essential for the activation of TGF- $\beta 1$  in MDCK cells and confirm that this activation is required for expression of LM-332 in subconfluent cultures.

**Mechanical Wounding of Confluent MDCK Cell Cultures Is Sufficient to Activate TGF- $\beta 1$  and Stimulate LM-332 Expression**

Previous results demonstrated that TGF- $\beta 1$  activation and consequent LM-332 expression occurs exclusively in subconfluent cultures of MDCK cells. Subconfluence is an *in vitro* phenomenon created by plating cells at low density. Epithelia *in vivo* are rendered “subconfluent” by wounding or injury that opens gaps in the continuous epithelium. To determine whether wounding was equivalent to subconfluence with regard to TGF- $\beta 1$  activation and LM-332 expression, confluent cultures of MDCK cells were mechanically wounded by scraping multiple times with a pipette tip and analyzed. As shown in Figure 8, wounding of confluent cultures produced both an apparent



**Figure 8.** Wounded confluent MDCK monolayers express LM-332. (A) Wounded epithelial monolayers activate TGF- $\beta 1$ . Conditioned media from a confluent MDCK cell culture (control) and a culture wounded by scraping with a pipette tip were analyzed by sandwich ELISA for total and active TGF- $\beta 1$ . \*\* $p < 0.01$  (B) LM-332 expression is localized to the cells close to the wound edge. A confluent MDCK cell monolayer (control) and a culture injured by scraping (Wound) were analyzed after 6 h for LM-332 expression (green; left) or P-Smad2 (green/arrows; right). F-actin, red; nuclei, blue. Bar, 25  $\mu$ m. (C) LM-332 synthesis is up-regulated in wounded cultures. Confluent MDCK cell monolayers (Ctrl) or wounded cultures (Wnd) were metabolically labeled with [ $^{35}$ S]Met/Cys for 20 min 6 h after wounding, and synthesized LM-332 was analyzed by immunoprecipitation. Autoradiography revealed increased levels of  $\alpha 3$ ,  $\beta 3$ , and  $\gamma 2$  subunit synthesis in wounded monolayers compared with the unwounded control. The numbers between parentheses indicate fold-increase in band intensity compared with the control. Note that  $\alpha 3$  and  $\gamma 2$  subunits show a similar fold-increase, consistent with coregulation of the  $\alpha 3$  and  $\gamma 2$  mRNAs. (D) Blocking  $\alpha V\beta 3$  integrin with LM609 or RGD prevents TGF- $\beta 1$  activation and LM- $\alpha 3$  mRNA expression. Confluent MDCK cell monolayers were treated with either anti- $\alpha V\beta 3$  function blocking antibody (LM609), a nonspecific antibody (IgG), RGD or RGE peptides in ExCell. After 6 h, the conditioned media were analyzed for TGF- $\beta 1$  activation (gray bars), and the cells were analyzed for LM- $\alpha 3$  mRNA expression by qRT-PCR (black bars). n.s., not statistically significant compared with “wound”; \* $p < 0.05$ ; \*\* $p < 0.01$  (E) Wounded MDCK monolayers treated as described in D were analyzed by immunofluorescence for LM-332 with a polyclonal antibody (green). F-actin, red; nuclei, blue. Bar, 25  $\mu$ m.

increase in the total amount of TGF- $\beta$ 1 in the medium as well as significantly more activation (Figure 8A). Furthermore, increased LM-332 synthesis and phospho-Smad2 were evident by immunofluorescence at the wound edge (Figure 7B) and by immunoprecipitation of LM-332 after metabolic-labeling of the wounded culture (Figure 7C), suggesting that expression of LM-332 is regulated in this situation in a manner identical to that established for subconfluent cultures.

To determine whether the LM609 antibody or RGD peptides were also able to impair TGF- $\beta$ 1 activation and LM-332 expression as in subconfluent cultures, wounded monolayers were treated with either LM609, IgG, RGD, or RGE. As shown in Figure 8D, TGF- $\beta$ 1 activation was significantly diminished by the treatment with LM609 or RGD (compared with their respective controls, IgG and RGE). This reduction in TGF- $\beta$ 1 activation was accompanied with a reduction in  $\alpha$ 3 subunit mRNA expression (Figure 8D) and LM-332 expression shown by immunofluorescence (Figure 8E).

In summary, these experiments clearly show that subconfluent cultures and wounded monolayers similarly activate endogenous TGF- $\beta$ 1, which signal via Smads and stimulate LM-332 production in a mechanism dependent on LM609/RGD.

## DISCUSSION

Previous results from our laboratory demonstrated that MDCK cells synthesize LM-332 only at subconfluent density (Mak *et al.*, 2006). In this study we have explored these observations further to determine the mechanism responsible for regulated synthesis. We report that expression of the  $\alpha$ 3 and  $\gamma$ 2 chains is transcriptionally controlled as a function of confluence and that expression of at least the  $\alpha$ 3 subunit is stimulated by TGF- $\beta$ 1 acting through Smad2/Smad4 binding to an SBE found in the  $\alpha$ 3 promoter. Furthermore, we find that MDCK cells constitutively secrete inactive TGF- $\beta$ 1 independently of state of confluence but only activate it when subconfluent through a mechanism involving integrin  $\alpha$ V $\beta$ 3.

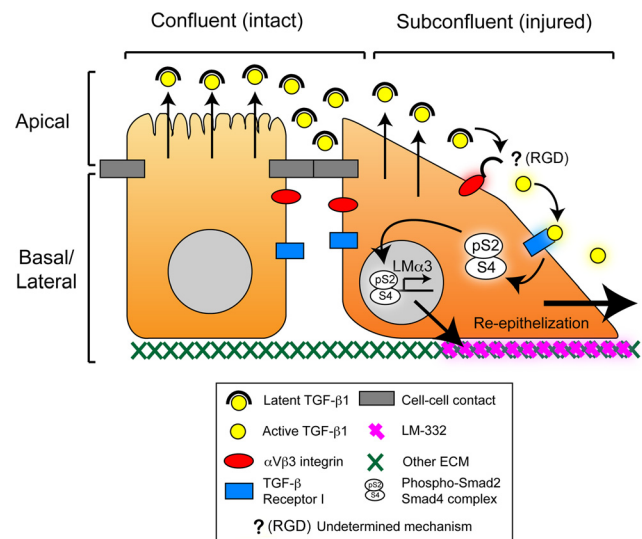
Transcriptional regulation of LM-332 expression is known to be complex. Early work showed that TGF- $\beta$  stimulated LM-332 expression in keratinocytes (Korang *et al.*, 1995), and the laminin  $\alpha$ 3A promoter was found to have three AP-1 sites (linked to stimulation by TGF- $\beta$ ), and an SRE (Virolle *et al.*, 1998). Later work also implicated other factors (Miller *et al.*, 2000, 2001; Virolle *et al.*, 2002; Sathyanarayana *et al.*, 2003a,b; Fitsialos *et al.*, 2008). More recently, Smad4 was shown to regulate the synthesis of all three LM-332 chains (Olsen *et al.*, 2000; Zboralski *et al.*, 2008).

Our results are consistent with a central role for TGF- $\beta$ 1 and Smad signaling in the regulation of LM-332 expression. In confluent cultures of MDCK cells that do not express LM-332, expression is stimulated by the addition of active TGF- $\beta$ 1. This artificially activated expression and normal expression in subconfluent cells is blocked by an inhibitor of the T $\beta$ R-I receptor that also blocks Smad2 phosphorylation, formation of Smad2/Smad4 complexes, and translocation of Smad4 to the nucleus. Transient expression of Smad2 and Smad4 (but not Smad3) dominant-negative constructs suppresses laminin  $\alpha$ 3 transcription, and Smad4, presumably in a complex with phospho-Smad2, binds to an SBE in the laminin  $\alpha$ 3 promoter when LM-332 expression is activated.

We find that confluent MDCK cells secrete inactive TGF- $\beta$ 1 apically, in agreement with Murphy *et al.* (2004). Our work extends these observations by describing an activation mechanism that is dependent on the integrin  $\alpha$ V $\beta$ 3, based on that the specificity of the function blocking anti-

body LM609 (Cheresh and Spiro, 1987; Cheresh *et al.*, 1989; Takagi *et al.*, 1997). Under polarized conditions, inactive TGF- $\beta$ 1 presumably is unable to interact with either the activation machinery dependent on  $\alpha$ V $\beta$ 3 or with its receptors, all of which are on the basolateral surface below the tight junction. Our findings are also potentially consistent with a recent study by Geng *et al.* (2009) who examined TGF- $\beta$  signaling in the mouse proximal tubule cell line BUMPT-306, and concluded that response to exogenous activated TGF- $\beta$ 1, as measured by Smad phosphorylation, declined with confluence (Geng *et al.*, 2009). Given that the cells in this study were grown on solid substrata instead of permeable supports, it is possible that the observed reduction in signaling was due, in part, to the inability of TGF- $\beta$  in the medium above the cells to access its receptors sequestered below the tight junctions.

Several  $\alpha$ V-containing integrins have been implicated in TGF- $\beta$  activation. Particularly,  $\alpha$ V $\beta$ 3 has been shown to bind through an RGD motif the LAP that sequesters TGF- $\beta$  (Ludbrook *et al.*, 2003; Dabovic and Rifkin, 2008; Goodwin and Jenkins, 2009). Our results showing that soluble RGD peptides can block TGF- $\beta$ 1 activation (and thus LM-332 expression) support these findings. Other details about the mechanism of TGF- $\beta$ 1 activation in MDCK cells are unknown at this point. Some studies suggest that integrin-dependent activation of TGF- $\beta$  also requires mechanical stretching of the extracellular matrix-associated LAP, metalloendopeptidases, or a combination to release the active TGF- $\beta$ 1 (Hyytiainen *et al.*, 2004; Dabovic and Rifkin, 2008; Wells and Discher, 2008). Indeed, some matrix metalloendopeptidases are only active in subconfluent MDCK cells (Moyano, Zuk, and Matlin, unpublished), but it is not clear whether they



**Figure 9.** Proposed model for the regulation of LM-332 expression by TGF- $\beta$ 1 and the epithelial barrier. Confluent (polarized) epithelial cells form an intact epithelium with differentiated apical and basolateral domains. Latent TGF- $\beta$ 1 is secreted apically but is separated from the activation machinery (composed at least by integrin  $\alpha$ V $\beta$ 3) and the TGF- $\beta$  Receptor I (T $\beta$ R-I) by intact epithelial junctional complexes. When the epithelium is wounded (cell-cell contacts disrupted), latent TGF- $\beta$ 1 is able to interact with integrin  $\alpha$ V $\beta$ 3 which activates it by an unidentified mechanism dependent on RGD [indicated by “? (RGD)”; see Discussion]. Activated TGF- $\beta$ 1 then binds to T $\beta$ R-I, initiating transcription and expression of LM-332 and facilitating the restoration of a continuous epithelium (reepithelialization).

participate in the activation mechanism. In subconfluent MDCK cells,  $\alpha V\beta 3$  is present on the free surface where it could bind the inactive complex and relocate it to the substratum for activation via mechanical tension caused by cell spreading. Further studies are necessary to discriminate between these possibilities.

Our results indicate that expression of LM-332 occurs primarily through activation of Smad2 and not Smad3. Consistent with this, transient expression of dominant-negative Smad2 but not Smad3 constructs in subconfluent MDCK cells suppresses expression of the laminin  $\alpha 3$  mRNA. In their study of TGF- $\beta$  and its receptors in MDCK cells, Murphy *et al.* (2004) observed activation of both Smad2 and Smad3 when active TGF- $\beta 2$  was added to the basolateral side of polarized cells. The basis for the apparent discrepancy between our results and those of Murphy *et al.* (2004) is unclear.

It is well known that differential activation of Smad2 and Smad3 can occur, but the exact molecular basis for this and downstream consequences are not known (Brown *et al.*, 2007; Fu *et al.*, 2009; Petersen *et al.*, 2010). After binding of TGF- $\beta 1$  to its receptors, phosphorylation of Smads by T $\beta$ R-I is regulated by accessory proteins such as Smad anchor for receptor activation (Wrana *et al.*, 2008). In MDCK cells, it is possible that such proteins are responsible for activation of Smad2 over Smad3 under subconfluent conditions. In MDCK and other renal cells, it is conceivable that activation of Smad2 is more important in injury repair responses, whereas Smad3 is involved in more dramatic alterations in cells leading to epithelial-mesenchymal transformation and fibrosis. In support of this, Phanish *et al.*, 2006 found that Smad2 was responsible for increases in MMP-2 expression in a transformed proximal tubule cell line, whereas changes related to epithelial-mesenchymal transdifferentiation such as loss of E-cadherin were Smad3 dependent.

Our laboratory reported previously that LM-332 expression in the rat kidney is significantly up-regulated during epithelial regeneration after ischemic injury (Zuk and Matlin, 2002). If the *in vitro* results reported here are applied to regenerative events in the rat kidney, then it would be anticipated that TGF- $\beta$  is involved in the up-regulation of LM-332. In fact, Basile *et al.* (1998) reported increased levels of TGF- $\beta 1$  mRNA and its receptors in the rat kidney after ischemic injury, and suggested that TGF- $\beta 1$  was responsible for increased expression of a variety of extracellular matrix-related genes. Expression of laminin isoforms was not examined. Basile's group also injected neutralizing TGF- $\beta 1$  antibodies into the circulation of posts ischemic rats and observed that the rates of renal tubular epithelial repair and improvement in physiological measures of injury were not impacted by the antibody (Spurgeon *et al.*, 2005). Given our findings and others (Murphy *et al.*, 2004) demonstrating that TGF- $\beta 1$  is secreted apically in MDCK cells, it is reasonable to ask whether the circulating anti-TGF- $\beta 1$  antibodies in the Basile experiments, which could only access the tubular epithelium by passing through the interstitial space, were effective in neutralizing TGF- $\beta 1$  at the level of the epithelium. The well-recognized presence of TGF- $\beta$  in the urine of normal individuals suggests that the polarity of the TGF- $\beta$  response described here is not just an *in vitro* phenomenon (Twardzik *et al.*, 1982; Twardzik and Sherwin, 1985; Goumenos *et al.*, 2002).

In summary, our results describe a novel mechanism for regulation of LM-332 expression in epithelial cells (Figure 9). In it, renal epithelial cells, and possibly other epithelial cells, constitutively produce all of the components necessary to initiate LM-332 expression, including latent TGF- $\beta$ , its re-

ceptors, and TGF- $\beta$  activation machinery. When the cells are confluent and polarized, TGF- $\beta$  can neither be activated nor signal because it is separated from the activation machinery and its receptors by the tight junctional barrier. When that barrier is breached, then TGF- $\beta$  signaling ensues and LM-332 expression commences without delay. To our knowledge, this is only the second example of a signaling mechanism whose regulation is dependent in part on the integrity of an epithelial barrier (Vermeer *et al.*, 2003), and the first such instance involving a component of the extracellular matrix. An implication of this proposed mechanism is that production of LM-332 is perhaps *the* most, proximal event after breakdown of the epithelial barrier. As such, it is conceivable that LM-332, acting through its receptors, helps to reprogram injured epithelial cells for restoration of epithelial continuity.

## ACKNOWLEDGMENTS

We thank Drs. Aki Manninen, Jonathan Jones, and Joel Collier for critically reading the manuscript and Drs. Tong-Chuan He, Kameswara Badri, and Lucia Schuger for helpful suggestions. This research was supported by National Institutes of Health [NIH] grant R01 DK-068568 and the Digestive Diseases Research Core Center of the University of Chicago grant NIH P30 DK-42086.

## REFERENCES

- Aberdam, D., Virolle, T., and Simon-Assmann, P. (2000). Transcriptional regulation of laminin gene expression. *Microsc. Res. Tech.* 51, 228–237.
- Aumailley, M., *et al.* (2005). A simplified laminin nomenclature. *Matrix Biol.* 24, 326–332.
- Aumailley, M., El Khal, A., Knoss, N., and Tunggal, L. (2003). Laminin 5 processing and its integration into the ECM. *Matrix Biol.* 22, 49–54.
- Basile, D. P., Martin, D. R., and Hammerman, M. R. (1998). Extracellular matrix-related genes in kidney after ischemic injury: potential role for TGF- $\beta$  in repair. *Am. J. Physiol.* 275, F894–F903.
- Brown, K. A., Pietenpol, J. A., and Moses, H. L. (2007). A tale of two proteins: differential roles and regulation of Smad2 and Smad3 in TGF- $\beta$  signaling. *J. Cell. Biochem.* 101, 9–33.
- Bruckner, P. (2010). Suprastructures of extracellular matrices: paradigms of functions controlled by aggregates rather than molecules. *Cell Tissue Res.* 339, 7–18.
- Bryant, D. M., and Mostov, K. E. (2008). From cells to organs: building polarized tissue. *Nat. Rev. Mol. Cell Biol.* 9, 887–901.
- Cheng, Y. S., Champiaud, M. F., Burgeson, R. E., Marinkovich, M. P., and Yurchenco, P. D. (1997). Self-assembly of laminin isoforms. *J. Biol. Chem.* 272, 31525–31532.
- Cheresh, D. A., Smith, J. W., Cooper, H. M., and Quaranta, V. (1989). A novel vitronectin receptor integrin  $\alpha V\beta 3$  is responsible for distinct adhesive properties of carcinoma cells. *Cell* 57, 59–69.
- Cheresh, D. A., and Spiro, R. C. (1987). Biosynthetic and functional properties of an Arg-Gly-Asp-directed receptor involved in human melanoma cell attachment to vitronectin, fibrinogen, and von Willebrand factor. *J. Biol. Chem.* 262, 17703–17711.
- Dabovic, B., and Rifkin, D. B. (2008). TGF- $\beta$  bioavailability: latency, targeting, and activation. In: *The TGF- $\beta$  Family*, ed. R. Derynck and K. Miyazono, Cold Spring Harbor, NY: Cold Spring Harbor Laboratory Press, 179–202.
- Eaton, S., and Simons, K. (1995). Apical, basal, and lateral cues for epithelial polarization. *Cell* 82, 5–8.
- Fitsialos, G., *et al.* (2008). HIF1 transcription factor regulates laminin-332 expression and keratinocyte migration. *J. Cell Sci.* 121, 2992–3001.
- Frank, D. E., and Carter, W. G. (2004). Laminin 5 deposition regulates keratinocyte polarization and persistent migration. *J. Cell Sci.* 117, 1351–1363.
- Fu, Y., Chang, A., Chang, L., Niessen, K., Eapen, S., Setiadi, A., and Karsan, A. (2009). Differential regulation of transforming growth factor  $\beta$  signaling pathways by Notch in human endothelial cells. *J. Biol. Chem.* 284, 19452–19462.

- Geng, H., *et al.* (2009). Inhibition of autoregulated TGF- $\beta$  signaling simultaneously enhances proliferation and differentiation of kidney epithelium and promotes repair following renal ischemia. *Am. J. Pathol.* 174, 1291–1308.
- Ghosh, S., and Stack, M. S. (2000). Proteolytic modification of laminins: functional consequences. *Microsc. Res. Tech.* 51, 238–246.
- Giannelli, G., and Antonaci, S. (2000). Biological and clinical relevance of Laminin-5 in cancer. *Clin. Exp. Metastasis* 18, 439–443.
- Goldfinger, L. E., Jiang, L., Hopkinson, S. B., Stack, M. S., and Jones, J. C. (2000). Spatial regulation and activity modulation of plasmin by high affinity binding to the G domain of the  $\alpha$ 3 subunit of laminin-5. *J. Biol. Chem.* 275, 34887–34893.
- Goodwin, A., and Jenkins, G. (2009). Role of integrin-mediated TGF- $\beta$  activation in the pathogenesis of pulmonary fibrosis. *Biochem. Soc. Trans.* 37, 849–854.
- Gottardi, C. J., Dunbar, L. A., and Caplan, M. J. (1995). Biotinylation and assessment of membrane polarity: caveats and methodological concerns. *Am. J. Physiol.* 268, F285–F295.
- Goumenos, D. S., Tsakas, S., El Nahas, A. M., Alexandri, S., Oldroyd, S., Kalliakmani, P., and Vlachojannis, J. G. (2002). Transforming growth factor- $\beta$ 1 in the kidney and urine of patients with glomerular disease and proteinuria. *Nephrol. Dial. Transplant.* 17, 2145–2152.
- Guess, C. M., and Quaranta, V. (2009). Defining the role of laminin-332 in carcinoma. *Matrix Biol.* 28, 445–455.
- Hamelers, I. H., Olivo, C., Mertens, A. E., Pegtel, D. M., van der Kammen, R. A., Sonnenberg, A., and Collard, J. G. (2005). The Rac activator Tiam1 is required for  $\alpha$ 3 $\beta$ 1-mediated laminin-5 deposition, cell spreading, and cell migration. *J. Cell Biol.* 171, 871–881.
- Hamill, K. J., and McLean, W. H. (2005). The  $\alpha$ 3 polypeptide chain of laminin 5, insight into wound healing responses from the study of genodermatoses. *Clin. Exp. Dermatol.* 30, 398–404.
- Hyttiainen, M., Penttinen, C., and Keski-Oja, J. (2004). Latent TGF- $\beta$  binding proteins: extracellular matrix association and roles in TGF- $\beta$  activation. *Crit. Rev. Clin. Lab. Sci.* 41, 233–264.
- Inman, G. J., Nicolás, F. J., Callahan, J. F., Harling, J. D., Gaster, L. M., Reith, A. D., Laping, N. J., and Hill, C. S. (2002). SB-431542 is a potent and specific inhibitor of transforming growth factor- $\beta$  superfamily type I activin receptor-like kinase (ALK) receptors ALK4, ALK5, and ALK7. *Mol. Pharmacol.* 62, 65–74.
- Jamora, C., and Fuchs, E. (2002). Intercellular adhesion, signalling and the cytoskeleton. *Nat. Cell Biol.* 4, E101–E108.
- Jones, J. C., Dehart, G. W., Gonzales, M., and Goldfinger, L. E. (2000). Laminins: an overview. *Microsc. Res. Tech.* 51, 211–213.
- Jones, J. C., Hopkinson, S. B., and Goldfinger, L. E. (1998). Structure and assembly of hemidesmosomes. *Bioessays* 20, 488–494.
- Korang, K., Christiano, A. M., Uitto, J., and Mauviel, A. (1995). Differential cytokine modulation of the genes LAMA3, LAMB3, and LAMC2, encoding the constitutive polypeptides,  $\alpha$ 3,  $\beta$ 3, and  $\gamma$ 2, of human laminin 5 in epidermal keratinocytes. *FEBS Lett.* 368, 556–558.
- Korbie, D. J., and Mattick, J. S. (2008). Touchdown PCR for increased specificity and sensitivity in PCR amplification. *Nat. Protoc.* 3, 1452–1456.
- Ledbetter, S., Kurtzberg, L., Doyle, S., and Pratt, B. M. (2000). Renal fibrosis in mice treated with human recombinant transforming growth factor- $\beta$ 2. *Kidney Int.* 58, 2367–2376.
- Li, S., Edgar, D., Fassler, R., Wadsworth, W., and Yurchenco, P. D. (2003). The role of laminin in embryonic cell polarization and tissue organization. *Dev. Cell* 4, 613–624.
- Ludbrook, S. B., Barry, S. T., Delves, C. J., and Horgan, C. M. (2003). The integrin  $\alpha$ V $\beta$ 3 is a receptor for the latency-associated peptides of transforming growth factors  $\beta$ 1 and  $\beta$ 3. *Biochem. J.* 369, 311–318.
- Mak, G. Z., Kavanaugh, G. M., Buschmann, M. M., Stickley, S. M., Koch, M., Goss, K. H., Waechter, H., Zuk, A., and Matlin, K. S. (2006). Regulated synthesis and functions of laminin 5 in polarized Madin-Darby canine kidney epithelial cells. *Mol. Biol. Cell* 17, 3664–3677.
- Margadant, C., Raymond, K., Kreft, M., Sachs, N., Janssen, H., and Sonnenberg, A. (2009). Integrin  $\alpha$ 3 $\beta$ 1 inhibits directional migration and wound re-epithelialization in the skin. *J. Cell Sci.* 122, 278–288.
- Marinkovich, M. P. (2007). Tumour microenvironment: laminin 332 in squamous-cell carcinoma. *Nat. Rev. Cancer* 7, 370–380.
- Masunaga, T. (2006). Epidermal basement membrane: its molecular organization and blistering disorders. *Connect Tissue Res.* 47, 55–66.
- Matlin, K. S., Reggio, H., Helenius, A., and Simons, K. (1981). Infectious entry pathway of influenza virus in a canine kidney cell line. *J. Cell Biol.* 91, 601–613.
- Miller, K. A., Chung, J., Lo, D., Jones, J. C., Thimmapaya, B., and Weitzman, S. A. (2000). Inhibition of laminin-5 production in breast epithelial cells by overexpression of p300. *J. Biol. Chem.* 275, 8176–8182.
- Miller, K. A., Eklund, E. A., Peddinghaus, M. L., Cao, Z., Fernandes, N., Turk, P. W., Thimmapaya, B., and Weitzman, S. A. (2001). Kruppel-like factor 4 regulates laminin  $\alpha$ 3A expression in mammary epithelial cells. *J. Biol. Chem.* 276, 42863–42868.
- Miner, J. H., and Yurchenco, P. D. (2004). Laminin functions in tissue morphogenesis. *Annu. Rev. Cell Dev. Biol.* 20, 255–284.
- Murphy, S. J., Dore, J. J., Edens, M., Coffey, R. J., Barnard, J. A., Mitchell, H., Wilkes, M., and Leof, E. B. (2004). Differential trafficking of transforming growth factor- $\beta$  receptors and ligand in polarized epithelial cells. *Mol. Biol. Cell* 15, 2853–2862.
- Nelson, W. J. (2003). Adaptation of core mechanisms to generate cell polarity. *Nature* 422, 766–774.
- Nelson, W. J. (2009). Remodeling epithelial cell organization: transitions between front-rear and apical-basal polarity. *Cold Spring Harb. Perspect. Biol.* 1, a000513.
- Nguyen, B. P., Ryan, M. C., Gil, S. G., and Carter, W. G. (2000). Deposition of laminin 5 in epidermal wounds regulates integrin signaling and adhesion. *Curr. Opin. Cell Biol.* 12, 554–562.
- O'Brien, L. E., Jou, T. S., Pollack, A. L., Zhang, Q., Hansen, S. H., Yurchenco, P., and Mostov, K. E. (2001). Rac1 orientates epithelial apical polarity through effects on basolateral laminin assembly. *Nat. Cell Biol.* 3, 831–838.
- Odenthal, U., Haehn, S., Tunggal, P., Merkl, B., Schomburg, D., Frie, C., Paulsson, M., and Smyth, N. (2004). Molecular analysis of laminin N-terminal domains mediating self-interactions. *J. Biol. Chem.* 279, 44504–44512.
- Olsen, J., Lefebvre, O., Fritsch, C., Troelsen, J. T., Orian-Rousseau, V., Kedinger, M., and Simon-Assmann, P. (2000). Involvement of activator protein 1 complexes in the epithelium-specific activation of the laminin gamma2-chain gene promoter by hepatocyte growth factor (scatter factor). *Biochem. J.* 347, 407–417.
- Petersen, M., Pardali, E., van der Horst, G., Cheung, H., van den Hoogen, C., van der Pluijm, G., and Ten Dijke, P. (2010). Smad2 and Smad3 have opposing roles in breast cancer bone metastasis by differentially affecting tumor angiogenesis. *Oncogene* 29, 1351–1361.
- Phanish, M. K., Wahab, N. A., Colville-Nash, P., Hendry, B. M., and Dockrell, M. E. (2006). The differential role of Smad2 and Smad3 in the regulation of pro-fibrotic TGF- $\beta$ 1 responses in human proximal-tubule epithelial cells. *Biochem J.* 393, 601–607.
- Sathyanarayana, U. G., Padar, A., Huang, C. X., Suzuki, M., Shigematsu, H., Bekele, B. N., and Gazdar, A. F. (2003a). Aberrant promoter methylation and silencing of laminin-5-encoding genes in breast carcinoma. *Clin. Cancer Res.* 9, 6389–6394.
- Sathyanarayana, U. G., Toyooka, S., Padar, A., Takahashi, T., Brambilla, E., Minna, J. D., and Gazdar, A. F. (2003b). Epigenetic inactivation of laminin-5-encoding genes in lung cancers. *Clin. Cancer Res.* 9, 2665–2672.
- Schilling, S. H., Hjelmeland, A. B., Rich, J. N., and Wang, X.-F. (2008). TGF- $\beta$ : a multipotential cytokine. In: *The TGF- $\beta$  Family*, ed. R. Derynck and K. Miyazono, Cold Spring Harbor, NY: Cold Spring Harbor Laboratory Press, 45–77.
- Schmierer, B., and Hill, C. S. (2007). TGF- $\beta$ -SMAD signal transduction: molecular specificity and functional flexibility. *Nat. Rev. Mol. Cell Biol.* 8, 970–982.
- Schock, F., and Perrimon, N. (2002). Molecular mechanisms of epithelial morphogenesis. *Annu. Rev. Cell Dev. Biol.* 18, 463–493.
- Schoenenberger, C. A., Zuk, A., Zinkl, G. M., Kendall, D., and Matlin, K. S. (1994). Integrin expression and localization in normal MDCK cells and transformed MDCK cells lacking apical polarity. *J. Cell Sci.* 107, 527–541.
- Sehgal, B. U., DeBiase, P. J., Matzno, S., Chew, T. L., Claiborne, J. N., Hopkinson, S. B., Russell, A., Marinkovich, M. P., and Jones, J. C. (2006). Integrin  $\beta$ 4 regulates migratory behavior of keratinocytes by determining laminin-332 organization. *J. Biol. Chem.* 281, 35487–35498.
- Spurgeon, K. R., Donohoe, D. L., and Basile, D. P. (2005). Transforming growth factor- $\beta$  in acute renal failure: receptor expression, effects on proliferation, cellularity, and vascularization after recovery from injury. *Am. J. Physiol. Renal Physiol.* 288, F568–F577.
- Takagi, J., Kamata, T., Meredith, J., Puzon-McLaughlin, W., and Takada, Y. (1997). Changing ligand specificities of  $\alpha$ V $\beta$ 1 and  $\alpha$ V $\beta$ 3 integrins by swapping a short diverse sequence of the  $\beta$  subunit. *J. Biol. Chem.* 272, 19794–19800.

- Twardzik, D. R., and Sherwin, S. A. (1985). Transforming growth factor (TGF) activity in human urine: synergism between TGF- $\beta$  and urogastrone. *J. Cell. Biochem.* 28, 289–297.
- Twardzik, D. R., Sherwin, S. A., Ranchalis, J., and Todaro, G. J. (1982). Transforming growth factors in the urine of normal, pregnant, and tumor-bearing humans. *J. Natl. Cancer Inst.* 69, 793–798.
- Vermeer, P. D., Einwalter, L. A., Moninger, T. O., Rokhlina, T., Kern, J. A., Zabner, J., and Welsh, M. J. (2003). Segregation of receptor and ligand regulates activation of epithelial growth factor receptor. *Nature* 422, 322–326.
- Violle, T., Coraux, C., Ferrigno, O., Cailleteau, L., Ortonne, J. P., Pognonec, P., and Aberdam, D. (2002). Binding of USF to a non-canonical E-box following stress results in a cell-specific derepression of the lama3 gene. *Nucleic Acids Res.* 30, 1789–1798.
- Violle, T., Monthouel, M. N., Djabari, Z., Ortonne, J. P., Meneguzzi, G., and Aberdam, D. (1998). Three activator protein-1-binding sites bound by the Fra-2/JunD complex cooperate for the regulation of murine laminin  $\alpha$ 3A (lama3A) promoter activity by transforming growth factor- $\beta$ . *J. Biol. Chem.* 273, 17318–17325.
- Wells, R. G., and Discher, D. E. (2008). Matrix elasticity, cytoskeletal tension, and TGF- $\beta$ : the insoluble and soluble meet. *Sci. Signal.* 1, pe13.
- Wrana, J. L., Ozdamar, B., Le Roy, C., and Benchabane, H. (2008). Signaling receptors of the TGF- $\beta$  family. In: *The TGF- $\beta$  Family*, ed. R. Derynck and K. Miyazono, Cold Spring Harbor, NY: Cold Spring Harbor Laboratory Press, 151–177.
- Yu, W., Datta, A., Leroy, P., O'Brien, L. E., Mak, G., Jou, T. S., Matlin, K. S., Mostov, K. E., and Zegers, M. M. (2005).  $\beta$ 1-Integrin orients epithelial polarity via Rac1 and laminin. *Mol. Biol. Cell* 16, 433–445.
- Yurchenco, P. D., and Patton, B. L. (2009). Developmental and pathogenic mechanisms of basement membrane assembly. *Curr. Pharm. Des.* 15, 1277–1294.
- Yurchenco, P. D., and Wadsworth, W. G. (2004). Assembly and tissue functions of early embryonic laminins and netrins. *Curr. Opin. Cell Biol.* 16, 572–579.
- Zboralski, D., Bockmann, M., Zapatka, M., Hoppe, S., Schoneck, A., Hahn, S. A., Schmiegel, W., and Schwarte-Waldhoff, I. (2008). Divergent mechanisms underlie Smad4-mediated positive regulation of the three genes encoding the basement membrane component laminin-332 (laminin-5). *BMC Cancer* 8, 215.
- Zhang, Y., Feng, X., We, R., and Derynck, R. (1996). Receptor-associated Smad homologues synergize as effectors of the TGF- $\beta$  response. *Nature* 383, 168–172.
- Zuk, A., and Matlin, K. S. (2002). Induction of a laminin isoform and  $\alpha$ 3 $\beta$ 1 integrin in renal ischemic injury and repair in vivo. *Am. J. Physiol. Renal Physiol.* 283, F971–F984.