

5,5-Dihydroxybarbituric acid 1,4-dioxane hemisolvate

Thomas Gelbrich,* Denise Rossi and Ulrich J. Griesser

Institute of Pharmacy, University of Innsbruck, Innrain 52, 6020 Innsbruck, Austria
Correspondence e-mail: thomas.gelbrich@uibk.ac.at

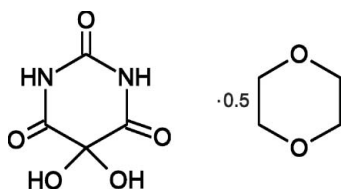
Received 23 April 2010; accepted 26 April 2010

Key indicators: single-crystal X-ray study; $T = 120$ K; mean $\sigma(\text{C}-\text{C}) = 0.003$ Å;
R factor = 0.045; wR factor = 0.131; data-to-parameter ratio = 10.3.

The asymmetric unit of the title compound, $\text{C}_4\text{H}_4\text{N}_2\text{O}_5 \cdot 0.5\text{C}_4\text{H}_8\text{O}_2$, contains one molecule of 5,5-dihydroxybarbituric acid with a nearly planar barbiturate ring and half a molecule of 1,4-dioxane. The geometry of the centrosymmetric dioxane molecule is close to an ideal chair conformation. The crystal structure exhibits a complex three-dimensional hydrogen-bonded network. Barbiturate molecules are connected to one another *via* $\text{N}-\text{H} \cdots \text{O}=\text{C}$, $\text{O}-\text{H} \cdots \text{O}=\text{C}$ and $\text{N}-\text{H} \cdots \text{O}(\text{hydroxy})$ interactions, while the barbituric acid molecule is linked to dioxane by an $\text{O}-\text{H} \cdots \text{O}$ contact.

Related literature

For the crystal structure of unsolvated 5,5-dihydroxybarbituric acid, see: Singh (1965); Harrowfield *et al.* (1989). For the related monohydrate, see Lewis & Tocher (2004a). For the related trihydrate, see Mootz & Jeffrey (1965); Lewis & Tocher (2004b). For hydrogen-bond motifs, see: Bernstein *et al.* (1995).



Experimental

Crystal data

$\text{C}_4\text{H}_4\text{N}_2\text{O}_5 \cdot 0.5\text{C}_4\text{H}_8\text{O}_2$
 $M_r = 204.14$
Triclinic, $P\bar{1}$
 $a = 6.0232$ (3) Å
 $b = 8.3954$ (4) Å
 $c = 8.6858$ (5) Å
 $\alpha = 106.007$ (4)°
 $\beta = 94.459$ (3)°

$\gamma = 110.126$ (3)°
 $V = 389.09$ (3) Å³
 $Z = 2$
Mo $K\alpha$ radiation
 $\mu = 0.16$ mm⁻¹
 $T = 120$ K
0.10 × 0.10 × 0.10 mm

Data collection

Bruker-Nonius Roper CCD camera
on κ -goniostat diffractometer
Absorption correction: multi-scan
(*SADABS*; Sheldrick, 2007)
 $T_{\min} = 0.984$, $T_{\max} = 0.984$
5726 measured reflections
1529 independent reflections
1198 reflections with $I > 2\sigma(I)$
 $R_{\text{int}} = 0.049$

Refinement

$R[F^2 > 2\sigma(F^2)] = 0.045$
 $wR(F^2) = 0.131$
 $S = 1.01$
1529 reflections
148 parameters
4 restraints
H atoms treated by a mixture of independent and constrained refinement
 $\Delta\rho_{\text{max}} = 0.25$ e Å⁻³
 $\Delta\rho_{\text{min}} = -0.29$ e Å⁻³

Table 1
Hydrogen-bond geometry (Å, °).

$D-\text{H} \cdots A$	$D-\text{H}$	$\text{H} \cdots A$	$D \cdots A$	$D-\text{H} \cdots A$
$\text{N1}-\text{H1N} \cdots \text{O6}^i$	0.89 (2)	2.39 (3)	3.068 (2)	134 (3)
$\text{N1}-\text{H1N} \cdots \text{O7}^{ii}$	0.89 (2)	2.44 (2)	3.180 (2)	141 (3)
$\text{N3}-\text{H3N} \cdots \text{O2}^{iii}$	0.88 (2)	1.93 (2)	2.810 (2)	172 (2)
$\text{O7}-\text{H7O} \cdots \text{O1S}$	0.87 (2)	1.87 (2)	2.732 (2)	171 (3)
$\text{O8}-\text{H8O} \cdots \text{O4}^{iv}$	0.83 (2)	1.95 (2)	2.751 (2)	162 (3)

Symmetry codes: (i) $-x+2, -y+2, -z+1$; (ii) $x+1, y, z$; (iii) $-x+1, -y+1, -z$; (iv) $-x, -y+1, -z+1$.

Data collection: *COLLECT* (Hooft, 1998); cell refinement: *DENZO* (Otwinowski & Minor, 1997) and *COLLECT*; data reduction: *DENZO* and *COLLECT*; program(s) used to solve structure: *SHELXS97* (Sheldrick, 2008); program(s) used to refine structure: *SHELXL97* (Sheldrick, 2008); molecular graphics: *XP* in *SHELXTL* (Sheldrick, 2008) and *Mercury* (Macrae *et al.*, 2008); software used to prepare material for publication: *pubCIF* (Westrip, 2010).

TG acknowledges financial support from the Lise Meitner Program of the Austrian Science Fund (FWF, project LM 1135-N17).

Supplementary data and figures for this paper are available from the IUCr electronic archives (Reference: JH2150).

References

- Bernstein, J., Davis, R. E., Shimon, L. & Chang, N.-L. (1995). *Angew. Chem. Int. Ed. Engl.* **34**, 1555–1573.
Harrowfield, J. M., Skelton, B. W., Soudi, A. A. & White, A. H. (1989). *Aust. J. Chem.* **42**, 1795–1798.
Hooft, R. W. W. (1998). *COLLECT*. Nonius BV, Delft, The Netherlands.
Lewis, T. C. & Tocher, D. A. (2004a). *Acta Cryst.* **E60**, o1689–o1690.
Lewis, T. C. & Tocher, D. A. (2004b). *Acta Cryst.* **E60**, o1748–o1750.
Macrae, C. F., Bruno, I. J., Chisholm, J. A., Edgington, P. R., McCabe, P., Pidcock, E., Rodriguez-Monge, L., Taylor, R., van de Streek, J. & Wood, P. A. (2008). *J. Appl. Cryst.* **41**, 466–470.
Mootz, D. & Jeffrey, G. A. (1965). *Acta Cryst.* **19**, 717–725.
Otwinowski, Z. & Minor, W. (1997). *Methods in Enzymology*, Vol. 276, *Macromolecular Crystallography*, Part A, edited by C. W. Carter Jr & R. M. Sweet, pp. 307–326. New York: Academic Press.
Sheldrick, G. M. (2007). *SADABS*. University of Göttingen, Germany.
Sheldrick, G. M. (2008). *Acta Cryst.* **A64**, 112–122.
Singh, C. (1965). *Acta Cryst.* **19**, 759–767.
Westrip, S. P. (2010). *J. Appl. Cryst.* **43**. Submitted.

supplementary materials

Acta Cryst. (2010). E66, o1219 [doi:10.1107/S1600536810015321]

5,5-Dihydroxybarbituric acid 1,4-dioxane hemisolvate

T. Gelbrich, D. Rossi and U. J. Griesser

Comment

The crystal structures of an unsolvated form (Singh, 1965; Harrowfield *et al.*, 1989), a monohydrate (Lewis & Tocher, 2004a) and a trihydrate (Mootz & Jeffrey, 1965; Lewis & Tocher, 2004b) of 5,5-dihydroxybarbituric acid have been reported previously. The asymmetric unit of the title structure consists of one molecule of the barbituric acid derivative and one half of a dioxane moiety (Fig. 1). The six-membered C₄N₂ ring of the former is essentially planar, and its bond distances and angles are in agreement with the parameters observed for the unsolvated and hydrate forms.

This crystal structure is characterized by extensive hydrogen bonding. Each dihydroxybarbituric acid molecule is linked to two molecules of the same kind via two centrosymmetric N—H \cdots O=C double bridges and a double bridge O—H \cdots O=C connects it to a third molecule. Joining these R²₂(8) and R²₂(10) motifs (Bernstein *et al.*, 1995) gives a larger ring of six dihydroxybarbituric acid molecules. Two molecules of each such ring are additionally O—H \cdots O bonded to a dioxane molecule which lies in the centre of the ring. Fig. 2 shows the 2-dimensional H-bonded net parallel to (1 $\bar{2}$ 1) which is obtained from these interactions. Additionally, one NH and one OH group of each dihydroxybarbituric acid molecule are engaged as H-bond donor and acceptor, respectively, in N—H \cdots O(hydroxy) interactions. These particular contacts, indicated by arrows in Fig. 2, connect adjacent H-bonded 2D units of the kind discussed above to one another, and an overall three-dimensional hydrogen bonded network is therefore formed. As expected, the two hydrogen bonds in which the N1—H group is involved exhibit a much less favourable geometry than the single hydrogen bond in which the N3—H group is employed.

Experimental

A solution of 5,5-dibromobarbituric acid (Sigma-Aldrich) in dioxane was filled into an NMR tube for a crystallisation experiment by slow evaporation of the solvent. After four months, an amber-coloured syrup had formed, indicating decomposition of the original compound. This liquid contained a large colourless crystal that proved to be composed of the title compound.

Refinement

All H atoms were identified in a difference map. H atoms bonded to secondary CH₂ (C—H = 0.99 Å) carbon atoms were positioned geometrically, and hydrogen atoms attached to N and O were refined with restrained distances [N—H = 0.88 (2) Å, O—H = 0.82 (2) Å]. The *U*_{iso} parameters of all hydrogen atoms were refined freely.

Figures

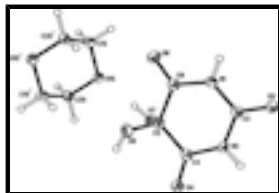


Fig. 1. The molecular structures of (I) with displacement ellipsoids drawn at the 50% probability level. Hydrogen atoms are shown as spheres of arbitrary size. Symmetry code: (i) $-x+1, -y+2, -z+2$.

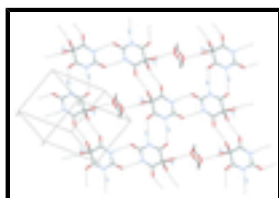


Fig. 2. Portion of a hydrogen bonded sheet parallel to (1-21) showing N—H...O=C and O—H...O=C bonds between barbituric acid molecules and O—H...O bonds between barbituric acid and dioxane. N—H...O(hydroxy) interactions linking to two adjacent sheets are indicated by arrows. Dioxane H atoms are omitted for clarity.

5,5-dihydroxybarbituric acid 1,4-dioxane hemisolvate

Crystal data

$C_4H_4N_2O_5 \cdot 0.5C_4H_8O_2$

$M_r = 204.14$

Triclinic, $P\bar{1}$

Hall symbol: $-P\ 1$

$a = 6.0232\ (3)\ \text{\AA}$

$b = 8.3954\ (4)\ \text{\AA}$

$c = 8.6858\ (5)\ \text{\AA}$

$\alpha = 106.007\ (4)^\circ$

$\beta = 94.459\ (3)^\circ$

$\gamma = 110.126\ (3)^\circ$

$V = 389.09\ (3)\ \text{\AA}^3$

$Z = 2$

$F(000) = 212$

$D_x = 1.742\ \text{Mg m}^{-3}$

Mo $K\alpha$ radiation, $\lambda = 0.71073\ \text{\AA}$

Cell parameters from 3190 reflections

$\theta = 2.9\text{--}26.0^\circ$

$\mu = 0.16\ \text{mm}^{-1}$

$T = 120\ \text{K}$

Block, colourless

$0.10 \times 0.10 \times 0.10\ \text{mm}$

Data collection

Bruker-Nonius Roper CCD camera on κ -goniostat diffractometer

1529 independent reflections

Radiation source: Bruker-Nonius FR591 rotating anode

1198 reflections with $I > 2\sigma(I)$

graphite

$R_{\text{int}} = 0.049$

Detector resolution: $9.091\ \text{pixels mm}^{-1}$

$\theta_{\text{max}} = 26.0^\circ$, $\theta_{\text{min}} = 3.6^\circ$

φ & ω scans

$h = -7 \rightarrow 7$

Absorption correction: multi-scan (SADABS; Sheldrick, 2007)

$k = -10 \rightarrow 10$

$T_{\text{min}} = 0.984$, $T_{\text{max}} = 0.984$

$l = -10 \rightarrow 10$

5726 measured reflections

Refinement

Refinement on F^2

Secondary atom site location: difference Fourier map

Least-squares matrix: full	Hydrogen site location: inferred from neighbouring sites
$R[F^2 > 2\sigma(F^2)] = 0.045$	H atoms treated by a mixture of independent and constrained refinement
$wR(F^2) = 0.131$	$w = 1/[\sigma^2(F_o^2) + (0.0787P)^2 + 0.0767P]$
$S = 1.01$	where $P = (F_o^2 + 2F_c^2)/3$
1529 reflections	$(\Delta/\sigma)_{\max} < 0.001$
148 parameters	$\Delta\rho_{\max} = 0.25 \text{ e } \text{\AA}^{-3}$
4 restraints	$\Delta\rho_{\min} = -0.29 \text{ e } \text{\AA}^{-3}$
Primary atom site location: structure-invariant direct methods	Extinction correction: SHELXL97 (Sheldrick, 2008), $F_c^* = kF_c[1+0.001xF_c^2\lambda^3/\sin(2\theta)]^{-1/4}$
	Extinction coefficient: 0.062 (16)

Special details

Geometry. All esds (except the esd in the dihedral angle between two l.s. planes) are estimated using the full covariance matrix. The cell esds are taken into account individually in the estimation of esds in distances, angles and torsion angles; correlations between esds in cell parameters are only used when they are defined by crystal symmetry. An approximate (isotropic) treatment of cell esds is used for estimating esds involving l.s. planes.

Refinement. Refinement of F^2 against ALL reflections. The weighted R -factor wR and goodness of fit S are based on F^2 , conventional R -factors R are based on F , with F set to zero for negative F^2 . The threshold expression of $F^2 > \sigma(F^2)$ is used only for calculating R -factors(gt) etc. and is not relevant to the choice of reflections for refinement. R -factors based on F^2 are statistically about twice as large as those based on F , and R -factors based on ALL data will be even larger.

Fractional atomic coordinates and isotropic or equivalent isotropic displacement parameters (\AA^2)

	x	y	z	$U_{\text{iso}}^*/U_{\text{eq}}$
N1	0.7757 (3)	0.7817 (2)	0.3822 (2)	0.0204 (4)
H1N	0.934 (3)	0.835 (4)	0.398 (4)	0.061 (10)*
N3	0.4114 (3)	0.5803 (2)	0.2073 (2)	0.0175 (4)
H3N	0.342 (4)	0.506 (3)	0.107 (2)	0.029 (6)*
O2	0.7627 (3)	0.65461 (19)	0.11484 (17)	0.0242 (4)
O4	0.0683 (3)	0.4836 (2)	0.29980 (18)	0.0264 (4)
O6	0.8029 (3)	0.90452 (19)	0.65175 (17)	0.0265 (4)
O7	0.3029 (2)	0.83394 (18)	0.53542 (18)	0.0212 (4)
H7O	0.360 (6)	0.895 (4)	0.638 (2)	0.064 (10)*
O8	0.3738 (3)	0.60819 (19)	0.60882 (17)	0.0221 (4)
H8O	0.228 (3)	0.574 (4)	0.615 (4)	0.060 (10)*
C2	0.6555 (4)	0.6706 (3)	0.2277 (2)	0.0189 (5)
C4	0.2802 (4)	0.5806 (3)	0.3280 (2)	0.0185 (5)
C6	0.6801 (3)	0.8039 (3)	0.5200 (2)	0.0186 (5)
C5	0.4070 (3)	0.7064 (3)	0.5010 (2)	0.0178 (5)
O1S	0.4460 (2)	1.04067 (18)	0.85656 (16)	0.0201 (4)
C1S	0.6766 (4)	1.1366 (3)	0.9647 (3)	0.0218 (5)
H1S1	0.6742	1.2450	1.0457	0.030 (6)*
H1S2	0.8027	1.1755	0.9014	0.013 (5)*

supplementary materials

C2S	0.2647 (3)	0.9800 (3)	0.9481 (2)	0.0213 (5)
H2S1	0.1066	0.9113	0.8733	0.031 (6)*
H2S2	0.2530	1.0848	1.0287	0.036 (7)*

Atomic displacement parameters (\AA^2)

	U^{11}	U^{22}	U^{33}	U^{12}	U^{13}	U^{23}
N1	0.0145 (9)	0.0210 (9)	0.0182 (10)	0.0021 (8)	0.0036 (7)	0.0005 (7)
N3	0.0161 (9)	0.0192 (9)	0.0127 (9)	0.0042 (7)	0.0020 (7)	0.0019 (7)
O2	0.0192 (8)	0.0258 (8)	0.0188 (8)	0.0030 (6)	0.0070 (6)	-0.0003 (6)
O4	0.0159 (8)	0.0307 (8)	0.0211 (8)	0.0004 (7)	0.0042 (6)	0.0016 (6)
O6	0.0191 (8)	0.0319 (9)	0.0186 (8)	0.0056 (7)	0.0014 (6)	-0.0007 (6)
O7	0.0190 (8)	0.0229 (8)	0.0200 (8)	0.0092 (6)	0.0031 (6)	0.0031 (6)
O8	0.0214 (8)	0.0279 (8)	0.0202 (8)	0.0096 (7)	0.0070 (6)	0.0116 (6)
C2	0.0179 (10)	0.0165 (10)	0.0187 (11)	0.0036 (8)	0.0040 (9)	0.0039 (8)
C4	0.0170 (10)	0.0187 (10)	0.0189 (11)	0.0056 (8)	0.0042 (8)	0.0061 (8)
C6	0.0166 (10)	0.0198 (10)	0.0180 (11)	0.0060 (8)	0.0036 (8)	0.0053 (8)
C5	0.0162 (10)	0.0199 (10)	0.0182 (11)	0.0069 (8)	0.0054 (8)	0.0068 (8)
O1S	0.0158 (7)	0.0249 (8)	0.0162 (8)	0.0054 (6)	0.0027 (6)	0.0044 (6)
C1S	0.0152 (10)	0.0225 (10)	0.0205 (11)	0.0019 (8)	-0.0004 (8)	0.0039 (8)
C2S	0.0138 (10)	0.0290 (11)	0.0182 (11)	0.0059 (9)	0.0040 (8)	0.0060 (9)

Geometric parameters (\AA , $^\circ$)

N1—C6	1.362 (3)	O8—H8O	0.834 (18)
N1—C2	1.374 (3)	C4—C5	1.532 (3)
N1—H1N	0.886 (18)	C6—C5	1.536 (3)
N3—C4	1.361 (3)	O1S—C2S	1.435 (2)
N3—C2	1.373 (3)	O1S—C1S	1.439 (2)
N3—H3N	0.883 (17)	C1S—C2S ⁱ	1.504 (3)
O2—C2	1.217 (2)	C1S—H1S1	0.9900
O4—C4	1.216 (2)	C1S—H1S2	0.9900
O6—C6	1.214 (2)	C2S—C1S ⁱ	1.504 (3)
O7—C5	1.394 (2)	C2S—H2S1	0.9900
O7—H7O	0.867 (18)	C2S—H2S2	0.9900
O8—C5	1.392 (2)		
C6—N1—C2	126.66 (17)	O8—C5—C4	109.42 (16)
C6—N1—H1N	115 (2)	O7—C5—C4	105.53 (15)
C2—N1—H1N	118 (2)	O8—C5—C6	106.79 (16)
C4—N3—C2	125.94 (17)	O7—C5—C6	108.58 (15)
C4—N3—H3N	119.4 (16)	C4—C5—C6	114.24 (16)
C2—N3—H3N	114.2 (16)	C2S—O1S—C1S	109.37 (15)
C5—O7—H7O	105 (2)	O1S—C1S—C2S ⁱ	110.63 (16)
C5—O8—H8O	107 (2)	O1S—C1S—H1S1	109.5
O2—C2—N3	122.08 (19)	C2S ⁱ —C1S—H1S1	109.5
O2—C2—N1	120.85 (18)	O1S—C1S—H1S2	109.5
N3—C2—N1	117.07 (17)	C2S ⁱ —C1S—H1S2	109.5
O4—C4—N3	121.06 (19)	H1S1—C1S—H1S2	108.1

O4—C4—C5	120.76 (18)	O1S—C2S—C1S ⁱ	110.95 (16)
N3—C4—C5	118.18 (17)	O1S—C2S—H2S1	109.4
O6—C6—N1	121.57 (18)	C1S ⁱ —C2S—H2S1	109.4
O6—C6—C5	120.87 (17)	O1S—C2S—H2S2	109.4
N1—C6—C5	117.43 (17)	C1S ⁱ —C2S—H2S2	109.4
O8—C5—O7	112.40 (16)	H2S1—C2S—H2S2	108.0
C4—N3—C2—O2	175.20 (18)	N3—C4—C5—O7	112.76 (19)
C4—N3—C2—N1	-5.1 (3)	O4—C4—C5—C6	173.36 (17)
C6—N1—C2—O2	-176.10 (18)	N3—C4—C5—C6	-6.4 (2)
C6—N1—C2—N3	4.2 (3)	O6—C6—C5—O8	-57.3 (2)
C2—N3—C4—O4	-173.22 (18)	N1—C6—C5—O8	126.73 (18)
C2—N3—C4—C5	6.6 (3)	O6—C6—C5—O7	64.2 (2)
C2—N1—C6—O6	179.18 (18)	N1—C6—C5—O7	-111.85 (19)
C2—N1—C6—C5	-4.8 (3)	O6—C6—C5—C4	-178.39 (17)
O4—C4—C5—O8	53.7 (2)	N1—C6—C5—C4	5.6 (2)
N3—C4—C5—O8	-126.09 (18)	C2S—O1S—C1S—C2S ⁱ	57.5 (2)
O4—C4—C5—O7	-67.4 (2)	C1S—O1S—C2S—C1S ⁱ	-57.7 (2)

Symmetry codes: (i) $-x+1, -y+2, -z+2$.

Hydrogen-bond geometry ($\text{\AA}, ^\circ$)

<i>D</i> —H \cdots <i>A</i>	<i>D</i> —H	H \cdots <i>A</i>	<i>D</i> \cdots <i>A</i>	<i>D</i> —H \cdots <i>A</i>
N1—H1N \cdots O6 ⁱⁱ	0.89 (2)	2.39 (3)	3.068 (2)	134 (3)
N1—H1N \cdots O7 ⁱⁱⁱ	0.89 (2)	2.44 (2)	3.180 (2)	141 (3)
N3—H3N \cdots O2 ^{iv}	0.88 (2)	1.93 (2)	2.810 (2)	172 (2)
O7—H7O \cdots O1S	0.87 (2)	1.87 (2)	2.732 (2)	171 (3)
O8—H8O \cdots O4 ^v	0.83 (2)	1.95 (2)	2.751 (2)	162 (3)

Symmetry codes: (ii) $-x+2, -y+2, -z+1$; (iii) $x+1, y, z$; (iv) $-x+1, -y+1, -z$; (v) $-x, -y+1, -z+1$.

Fig. 1

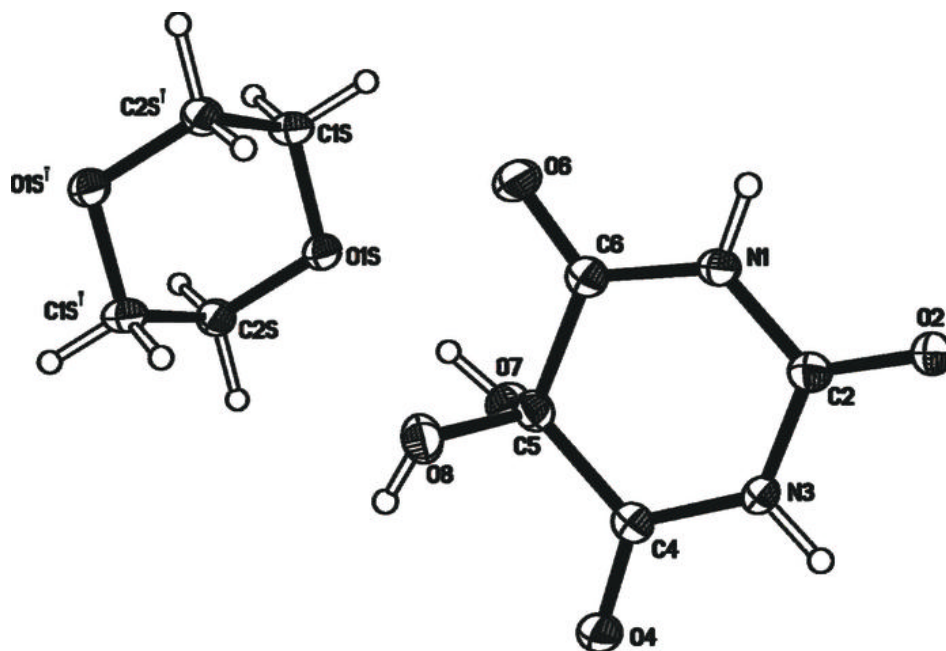


Fig. 2

