



RESEARCH ARTICLE

Open Access

# Rhomboid homologs in mycobacteria: insights from phylogeny and genomic analysis

David P Kateete<sup>1</sup>, Moses Okee<sup>1</sup>, Fred A Katabazi<sup>1</sup>, Alfred Okeng<sup>1</sup>, Jeniffer Asiimwe<sup>2</sup>, Henry W Boom<sup>3</sup>, Kathleen D Eisenach<sup>4</sup>, Moses L Joloba<sup>1\*</sup>

## Abstract

**Background:** Rhomboids are ubiquitous proteins with diverse functions in all life kingdoms, and are emerging as important factors in the biology of some pathogenic apicomplexa and *Providencia stuartii*. Although prokaryotic genomes contain one rhomboid, actinobacteria can have two or more copies whose sequences have not been analyzed for the presence putative rhomboid catalytic signatures. We report detailed phylogenetic and genomic analyses devoted to prokaryotic rhomboids of an important genus, *Mycobacterium*.

**Results:** Many mycobacterial genomes contained two phylogenetically distinct active rhomboids orthologous to Rv0110 (rhomboid protease 1) and Rv1337 (rhomboid protease 2) of *Mycobacterium tuberculosis* H37Rv, which were acquired independently. There was a genome-wide conservation and organization of the orthologs of Rv1337 arranged in proximity with glutamate racemase (*mur1*), while the orthologs of Rv0110 appeared evolutionary unstable and were lost in *Mycobacterium leprae* and the *Mycobacterium avium* complex. The orthologs of Rv0110 clustered with eukaryotic rhomboids and contained eukaryotic motifs, suggesting a possible common lineage. A novel nonsense mutation at the Trp73 codon split the rhomboid of *Mycobacterium avium* subsp. *Paratuberculosis* into two hypothetical proteins (MAP2425c and MAP2426c) that are identical to MAV\_1554 of *Mycobacterium avium*. Mycobacterial rhomboids contain putative rhomboid catalytic signatures, with the protease active site stabilized by Phenylalanine. The topology and transmembrane helices of the Rv0110 orthologs were similar to those of eukaryotic secretase rhomboids, while those of Rv1337 orthologs were unique. Transcription assays indicated that both mycobacterial rhomboids are possibly expressed.

**Conclusions:** Mycobacterial rhomboids are active rhomboid proteases with different evolutionary history. The Rv0110 (rhomboid protease 1) orthologs represent prokaryotic rhomboids whose progenitor may be the ancestors of eukaryotic rhomboids. The Rv1337 (rhomboid protease 2) orthologs appear more stable and are conserved nearly in all mycobacteria, possibly alluding to their importance in mycobacteria. MAP2425c and MAP2426c provide the first evidence for a split homologous rhomboid, contrasting whole orthologs of genetically related species. Although valuable insights to the roles of rhomboids are provided, the data herein only lays a foundation for future investigations for the roles of rhomboids in mycobacteria.

## Background

The genus *Mycobacterium* consists of ~148 species [1], of which some are leading human and animal pathogens. Tuberculosis (TB), the most important mycobacterial disease, is caused by genetically related species commonly referred to as “the *Mycobacterium tuberculosis* Complex” (MTC: *Mycobacterium tuberculosis*;

*M. bovis*, also the causative agent of bovine TB; *M. bovis* BCG; *M. africanum*; *M. carnetti* and *M. microti* [2]). *M. leprae* and *M. ulcerans* are respectively the causative agents for two other important diseases, Leprosy and Buruli ulcer [3,4]. Besides the three major diseases, *M. avium* subsp. *Paratuberculosis* causes John’s disease (a fatal disease of dairy cattle [5]) and is also suspected to cause Crohn’s disease in humans [5]. In addition, *M. avium* and other non-tuberculous mycobacteria (NTM) have become important opportunistic pathogens of immunocompromised humans and animals [6,7].

\* Correspondence: moses.joloba@case.edu

<sup>1</sup>Department of Medical Microbiology, School of Biomedical Sciences, Makerere University College of Health Sciences, Kampala, Uganda  
Full list of author information is available at the end of the article

Mycobacteria have versatile lifestyles and habitats, complexities also mirrored by their physiology. While some can be obligate intracellular pathogens (i.e. the MTC species) [8], others are aquatic inhabitants, which can utilize polycyclic aromatic hydrocarbons (i.e. *M. vanbaalenii*) [9]. The biology of pathogenic mycobacteria remains an enigma, despite their importance in human and veterinary medicine. Except for the mycolactone of *M. ulcerans*, glycolipids (such as PDIMs) and proteins (such as ESAT-6) of MTC species [10,11], largely, in contrast to most bacterial pathogens, pathogenic mycobacteria lack obvious virulence factors and the mechanisms in which they cause diseases are still obscure [12]. Genome sequencing projects have provided invaluable tools that are accelerating the understanding of the biology of pathogenic mycobacteria. As such, genome sequencing data has guided the characterization of genes/pathways for microbial pathogens, accelerating discovery of novel control methods for the intractable mycobacterial diseases [5,13-16].

The rhomboid protein family exists in all life kingdoms and has rapidly progressed to represent a ubiquitous family of novel proteins. The knowledge and the universal distribution of rhomboids was engendered and accelerated by functional genomics [17]. The first rhomboid gene was discovered in *Drosophila melanogaster* as a mutation with an abnormally rhomboid-shaped head skeleton [17,18]. Genome sequencing data later revealed that rhomboids occur widely in both eukaryotes and prokaryotes [17]. Many eukaryotic genomes contain several copies of rhomboid-like genes (seven to fifteen) [19], while most bacteria contain one homolog [19].

Despite biochemical similarity in mechanism and specificity, rhomboid proteins function in diverse processes including mitochondrial membrane fusion, apoptosis and stem cell differentiation in eukaryotes [20]. Rhomboid proteases are also involved in life cycles of some apicomplexan parasites, where they participate in red blood cell invasion [21-25]. Rhomboids are now linked to general human diseases such as early-onset blindness, diabetes and pathways of cancerous cells [20,26,27]. In bacteria, *aarA* of *Providencia stuartii* was the first rhomboid homolog to be characterized, which was shown to mediate a non-canonical type of quorum sensing in this gram negative species [28-30]. Since then, bacterial rhomboids are being characterized, albeit at low rate; *gluP* of *Bacillus subtilis* is involved in cell division and glucose transport [31], while *glpG* of *Escherichia coli* [17,32] was the first rhomboid to be crystallized, paving way for delineation of the mechanisms of action for rhomboid proteases [33,34].

Although universally present in all kingdoms, not all rhomboids are active proteases [19,35]. Lemberg and Freeman [35] defined the rhomboid family as genes identified by sequence homology alone, and the

rhomboid proteases as a subset that includes only genes with all necessary features for predicted proteolytic activity. As such, rhomboid-like genes in eukaryotic genomes are classified into the active rhomboids, inactive rhomboids (known as the iRhoms) and a diverse group of other proteins related in sequence but predicted to be catalytically inert. The eukaryotic active rhomboids are further divided into two subfamilies: the secretase rhomboids that reside in the secretory pathway or plasma membrane, and the PARL subfamily, which are mitochondrial [35].

Despite their presence in virtually all eubacteria, there is a paucity of information about the functions of bacterial rhomboids. Hitherto, full phylogenetic analysis of rhomboids from the complex and populous prokaryotes has not been done; although it can provide important functional and evolutionary insights [17,35], it is a huge and difficult task to perform at once. Many species of mycobacteria contain two copies of rhomboid homologs whose sequences have not been investigated for the presence of functional signatures. Furthermore, actinobacteria can have up to five copies of rhomboids, the significance of which is currently not known. This study aimed at determining the distribution, evolutionary trends and bioinformatic analysis of rhomboids from an important genus -*Mycobacterium*.

Herein we report that mycobacterial rhomboids are active proteases with different evolutionary history, with Rv0110 orthologs representing a group of prokaryotic rhomboids whose progenitor may be the ancestor for eukaryotic rhomboids.

## Results and discussion

A quest for the role(s) of rhomboids in mycobacteria is overshadowed by their diverse functions across kingdoms and even within species. Their presence across kingdoms implies that rhomboids are unusual useful factors that originated early in the evolution of life and have been conserved [20]. However, neither the reason for their implied significance nor the path of their evolution are understood; the key to answering these questions is rooted in understanding not only the sequence distribution of these genes, but more importantly, their functions across evolution [17,20]. This study reports that mycobacterial rhomboids are active rhomboid-serine-proteases with different evolutionary history. Reverse Transcriptase-PCRs on mycobacterial mRNA indicate that both copies of rhomboids are transcribed.

### The distribution of rhomboids in mycobacteria: a nearly conserved rhomboid with unique genome organization across the genus

In determining the distribution of rhomboid homologs in mycobacteria, we used the two rhomboids of *M.*

*tuberculosis* H37Rv, Rv0110 (rhomboid protease 1) and Rv1337 (rhomboid protease 2) as reference and query sequences. Many mycobacterial genomes contained two rhomboids, which were orthologous either to Rv0110 or Rv1337. However, there was only one homolog in the genomes of the MAC (*Mycobacterium avium* complex) species, *M. leprae* and *M. ulcerans*, which were orthologous either to Rv1337 (MAC and *M. leprae* rhomboids) or Rv0110 (*M. ulcerans* rhomboid). *M. ulcerans* was the only mycobacterial species with an ortholog of Rv0110 as a sole rhomboid. Thus, with the exception of *M. ulcerans* which had a rhomboid-like element (MUL\_3926, pseudogene), there is a genome-wide conservation of the rhomboids orthologous to Rv1337 (rhomboid protease 2) in mycobacteria (figure 1).

Despite evolutionary differences across the genus, the Rv1337 mycobacterial orthologs shared a unique genome organization at the rhomboid locus, with many of the rhomboid surrounding genes conserved (figure 1). Typically, upstream and downstream of the rhomboid were *cysM* (cysteine synthetase) and *mur1* (glutamate racemase) encoding genes. Since Rv1337 orthologs are almost inseparable from *mur1* and *cysM*, it is likely that they are co-transcribed (polycistronic) or functional partners. As such, we may consider the cluster containing mycobacterial Rv1337 orthologs as a putative operon. According to Sasseti et al [36,37], many of the rhomboid surrounding genes are essential while others (including rhomboid protease 2, Rv1337) are required for the survival of the tubercle bacillus in macrophages [38].

Despite massive gene decay in *M. leprae*, ML1171 rhomboid had similar genome arrangement observed for mycobacterial species. Upstream of ML1171 were gene elements (pseudogenes) ML1168, ML1169 and ML1170 (the homolog of *cysM* which is conserved downstream most Rv1337 orthologs). Similar to *M. leprae*, the MAC species also had an ortholog of Rv1337 as a sole rhomboid; perhaps the ortholog of Rv0110 was lost in the progenitor for MAC and *M. leprae* (these species are phylogenetically related and appear more ancient in comparison to *M. marinum*, *M. ulcerans* and MTC species [39]). In contrast to most mycobacterial genomes, *cysM* was further upstream the *M. marinum* rhomboid (MMAR\_4059); and despite being genetically related to MTC species [40], MMAR\_4059 does not share much of the genome organization observed for Rv1337 MTC orthologs (figure 1).

The rhomboid-like element of *M. ulcerans* (MUL\_3926, pseudogene) was identical to MMAR\_4059 (~96% similarity to MMAR\_4059) with a 42 bp insertion at the beginning and eight single nucleotide polymorphisms (SNPs). Perhaps the insertion disrupted the open reading frame (ORF) of MUL\_3926, converting it into a pseudogene. Interestingly, MUL\_3926 nearly assumed

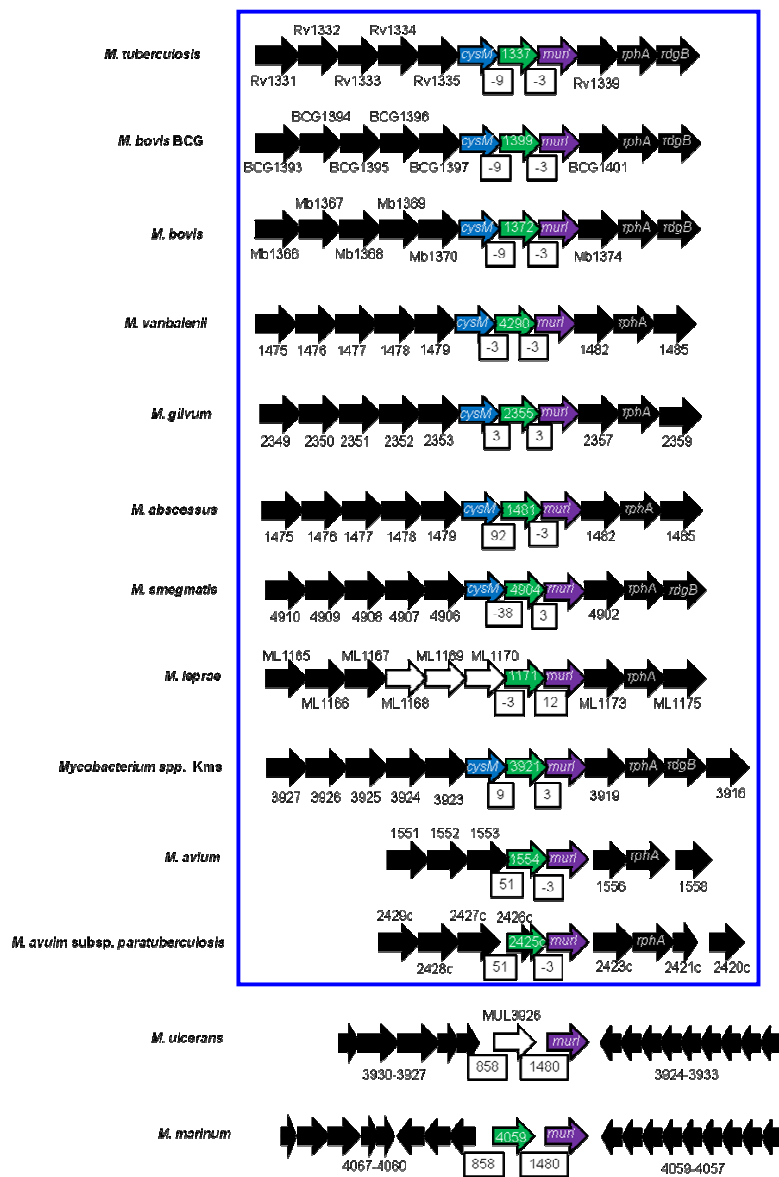
the unique organization observed for mycobacterial orthologs of Rv1337, in which the rhomboid element was upstream of *mur1*.

The functional and evolutionary significance for the unique organization of the Rv1337 orthologs in mycobacteria is not clear. Since physiological roles are not yet ascribed to mycobacterial rhomboids, it is not certain whether MUL\_3926 (pseudogene) would mimic similar roles in that it almost assumed similar genomic organization (note: functions have been ascribed to certain pseudogenes [41-43]). However, the fact that *M. ulcerans* is a new species (recently evolved from *M. marinum* [40]) that has undergone reductive evolution, MUL\_3926 could be a consequence of these recent phenomena [44]. Interestingly, MUL\_3926 was the only rhomboid-like element in mycobacteria.

In contrast, the genome organization for Rv0110 orthologs was not conserved, and mirrored the genetic relatedness of mycobacteria (figure 2). As such, the orthologs from MTC species, *M. marinum* and *M. ulcerans*, which are genetically related and are assumed to have the same *M. marinum*-like progenitor [39,40,45,46] had similar organization for Rv0110 ortholog. Downstream and upstream of the rhomboid were respectively, the transmembrane acyltransferase and the Proline-Glutamate polymorphic GC rich-repetitive sequence (*PE-PGRS*) encoding genes. *PE-PGRS* occurs widely in *M. marinum* and MTC genomes [39] but it was a pseudogene upstream MUL\_4822 of *M. ulcerans*. The distances between MTC Rv0110 orthologs and the neighboring genes were long, in contrast to the short distances between Rv1337 rhomboids and their neighboring genes.

Similarly, the genome organization for the Rv0110 orthologs of *M. gilvum*, *M. vanbaalenii* and *Mycobacterium* species M.Jls, Mkms and Mmcs was also similar. Upstream and downstream the rhomboid was, respectively, the glyoxalase/bleomycin resistance protein/dioxygenase encoding gene and a gene that encodes a hypothetical protein. In contrast to MTC species, the Rv0110 orthologs in these species were close or contiguous with the neighboring genes (figure 2). The genome organization of MAB\_0026 of *M. abscessus* and MSMEG\_5036 of *M. smegmatis* were unique to these species (not shown).

Many bacterial genomes contain a single copy of rhomboid. However, filamentous actinobacteria such as *Streptomyces coelator* and *Streptomyces scabiei* have as many as four or five copies of rhomboid-like genes. Since multi-copy rhomboids in prokaryotic genomes are not yet characterized, it is not certain whether prokaryotic rhomboids can also have diverse functions, similar to multi-copy rhomboids in eukaryotic genomes. Mycobacteria and actinobacteria at large exhibit diverse



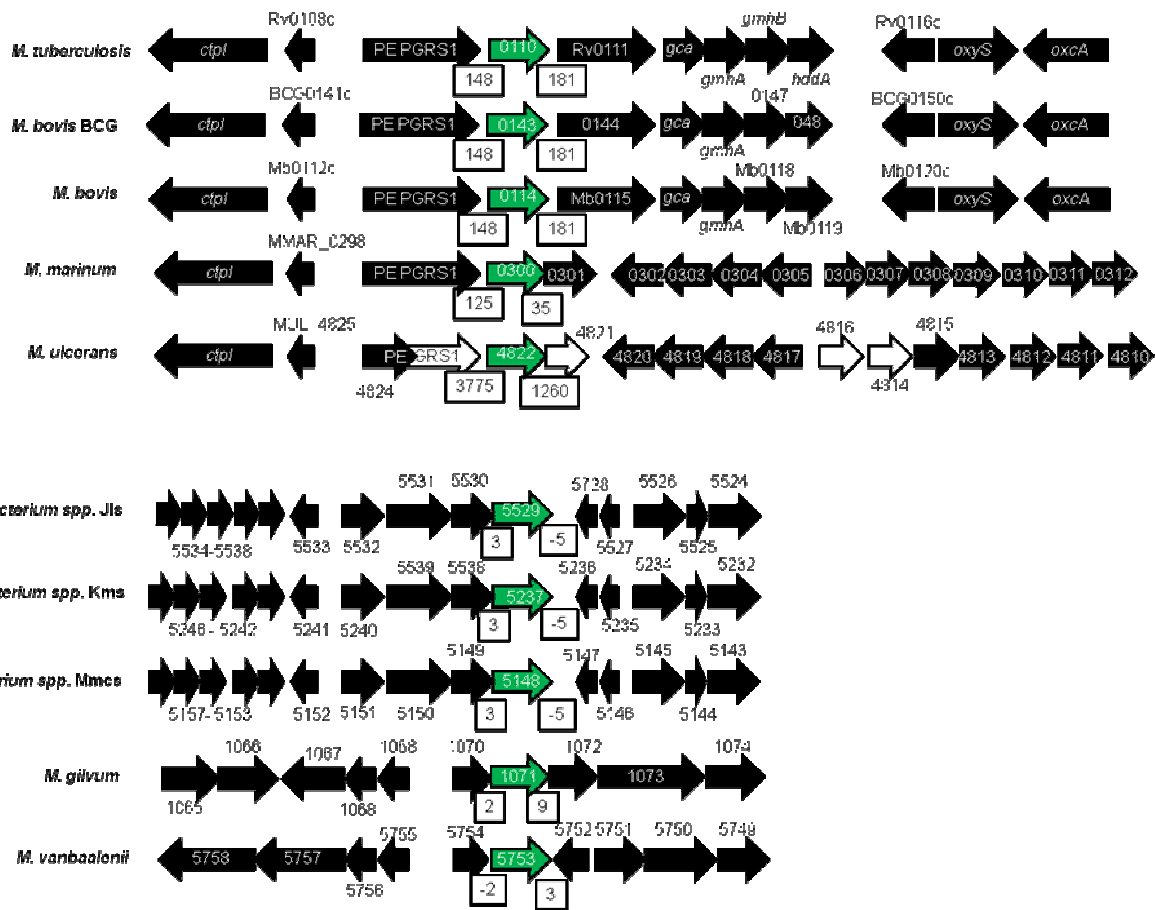
**Figure 1 Genomic arrangement for Rv1337 mycobacterial orthologs.** Unique genome organization occurs for Rv1337 orthologs across the genus. *murI* was downstream and *cysM* upstream of the rhomboids (except *M. marinum* and MAC species). Colored block arrows: blue, *cysM*; green, rhomboid homologs; purple, *murI*; black, rhomboid surrounding genes; white, pseudogene. White boxes indicate distances between rhomboids and upstream and downstream genes. Boxed (blue) are the species with similar arrangement for the rhomboids.

physiological and metabolic properties. It remains to be determined whether the diversity in number, nature and functions of rhomboids can contribute to the complex lifestyles of these organisms [8].

#### Similarity between the two mycobacterial rhomboid paralogs

Across the genus, the similarity between the two mycobacterial rhomboid paralogs was as low as that between prokaryotic and eukaryotic rhomboids (~10-20% identity) [19]. Since paralogs perform biologically distinct

functions [47], the two mycobacterial rhomboids may have distinct roles. Eukaryotic rhomboid paralogs are also dissimilar and differ in functions in a particular species [17]. In contrast, the orthologs had significantly high homology (see table 1), with an average identity of 74%. Rv0110 orthologs within the MTC and MAC species had an identity of ~100% while those from other mycobacterial species had identities ranging from 61 to 78% (table 1). The exception was MAB\_0026 of *M. abscessus*, which shared a significantly low homology with Rv0110 (38% identity at 214 amino acid overlap).



**Figure 2** The genome organization for Rv0110 mycobacterial orthologs not conserved. White open arrows indicate pseudogenes; green solid arrows, Rv0110 orthologs; black solid arrows, rhomboid surrounding genes; open boxes, distances between rhomboids and neighboring genes (which were big except in *M. gilvum*, *M. vanbaalenii*, and *Mycobacterium* spp. JLS, Mks and Mmcs).

This could be due to the large evolutionary distance between *M. abscessus* and other mycobacteria. Since proteins of ~70% identity or more are likely to have similar functions [48], MAB\_0026 may have unique roles.

#### The two mycobacterial rhomboids were acquired independently

To determine evolutionary relationship between the two rhomboid paralogs, phylogenetic analysis was done and included distant eukaryotic and prokaryotic rhomboids. The mycobacterial rhomboids clustered into two distinct clades with high Bootstrap values (99-100%), indicating that the rhomboids could have been acquired independently (figure 3A). Each clade consisted of rhomboids orthologous either to Rv0110 or Rv1337, grouped according to genetic relatedness of mycobacteria [39], with MAB\_0026 of *M. abscessus* appearing the most distant. The phylogenetic analysis confirmed that the two mycobacterial rhomboids are paralogs, but their

progenitor could not be determined. Thus, the mycobacterial rhomboid paralogs may be “outparalogs” (i.e. they could have resulted from duplication(s) preceding a speciation event [47]), while the orthologs could have originated from a single ancestral gene in the last common ancestor [47]). The Neighbor-Joining and Minimum Evolution phylogenetic trees were compared and gave almost comparable results.

The Rv0110 (rhomboid protease 1) mycobacterial orthologs (boxed blue) clustered with eukaryotic secretase and PARL rhomboids with a high Bootstrap value (85%, figure 3A). When grouped with eukaryotic iRhoms, the Bootstrap value for this clade increased to 90%, with iRhoms forming a distinct clade (not shown). The Rv0110 mycobacterial orthologs may represent prokaryotic rhomboids with similar lineage or progenitor for eukaryotic active rhomboids. This was previously noted by Koonin et al [19], who hinted on a subfamily of eukaryotic rhomboids that clustered with rhomboids of Gram positive bacteria. Indeed, the Rv0110

**Table 1 The distribution and similarity<sup>a</sup> of mycobacterial rhomboids**

Orthologs of Rv0110 (rhomboid protease 1)						
Species/ strain	Rhomboid	Length	Query: Rv0110		Query: Rv1337	
			% Identity	E- value	% Identity	E- value
<sup>b</sup> H37Rv	Rv0110	284	100	5e-143	26	3e-06
<sup>c</sup> BCG Tokyo	JTY_0114	284	100	3e-143	26	3e-06
<i>M. bovis</i>	Mb0114	284	100	3e-143	26	3e-06
<i>M. ulcerans</i> <sup>†</sup>	MUL_4822	254	78	5e-104	27	1e-04
<i>M. marinum</i>	MMAR_0300	289	77	1e-103	26	2e-06
<sup>d</sup> M.sp. JLS	Mjls_5529	289	67	7e-97	NS	5e-06
<sup>e</sup> M.sp. Kms	Mkms_5237	289	66	2e-96	NS	3e-06
<i>M. smegmatis</i>	MSMEG_5036	250	64	8e-90	NS	7e-09
<i>M. vanbaalenii</i>	Mvan_5753	290	61	6e-77	NS	6e-08
<i>M. gilvum</i>	Mflv_1071	279	61	7e-73	NS	2e-06
<i>M. abscessus</i>	MAB_0026	287	38	7e-38	NS	1e-04
Orthologs of Rv1337 (rhomboid protease 2)						
H37Rv	Rv1337	240	27	7e-06	100	7e-137
BCG Tokyo	JTY_1373	240	27	7e-06	100	7e-137
<i>M. bovis</i>	Mb1372	240	27	7e-06	100	7e-137
<i>M. marinum</i>	MMAR_4059	222	26	8e-07	83	2e-106
<i>M. avium</i> <sup>†</sup>	MAV_1554	223	28	9e-05	75	7e-95
<i>M. leprae</i> <sup>†</sup>	ML1171	238	27	1e-04	73	7e-94
<sup>f</sup> MAP <sup>†</sup>	MAP2425c	223	NS	1e-04	74	6e-91
<i>M. smegmatis</i>	MSMEG_4904	219	NS	1e-05	73	9e-89
M.sp. JLS	Mjls_3833	229	26	1e-04	67	7e-81
M.sp. Kms	Mkms_3921	229	26	1e-04	67	7e-81
<i>M. vanbaalenii</i>	Mvan_4290	225	NS	4e-05	67	9e-77
<i>M. gilvum</i>	Mflv_2355	225	27	7e-04	66	9e-68
<i>M. abscessus</i>	MAB_1481	225	NS	8e-05	61	4e-67

<sup>a</sup>: In comparison to Rv0110 and Rv1337 of *M. tuberculosis* H37Rv; lengths refer to number of amino acids.

<sup>b</sup>: *Mycobacterium tuberculosis*.

<sup>c</sup>: *Mycobacterium bovis*.

<sup>d</sup>: *Mycobacterium* species Jls.

<sup>e</sup>: *Mycobacterium* species Kms.

<sup>f</sup>: *Mycobacterium avium* subspecies *Paratuberculosis*.

<sup>†</sup>: Species with one rhomboid.

NS: Not Significant (< 10% identity).

mycobacterial orthologs contained extra eukaryotic motifs and have topologies similar to that of rho-1 of drosophila. Koonin et al [19] alluded that rhomboids could have emerged in a bacterial lineage and were eventually widely disseminated (to other life kingdoms) by horizontal transfer [19]. Conversely, the Rv1337 mycobacterial orthologs (boxed red) formed a distinct clade, different from Rv0110 mycobacterial orthologs. These rhomboids appeared evolutionary stable and did not cluster with eukaryotic rhomboids.

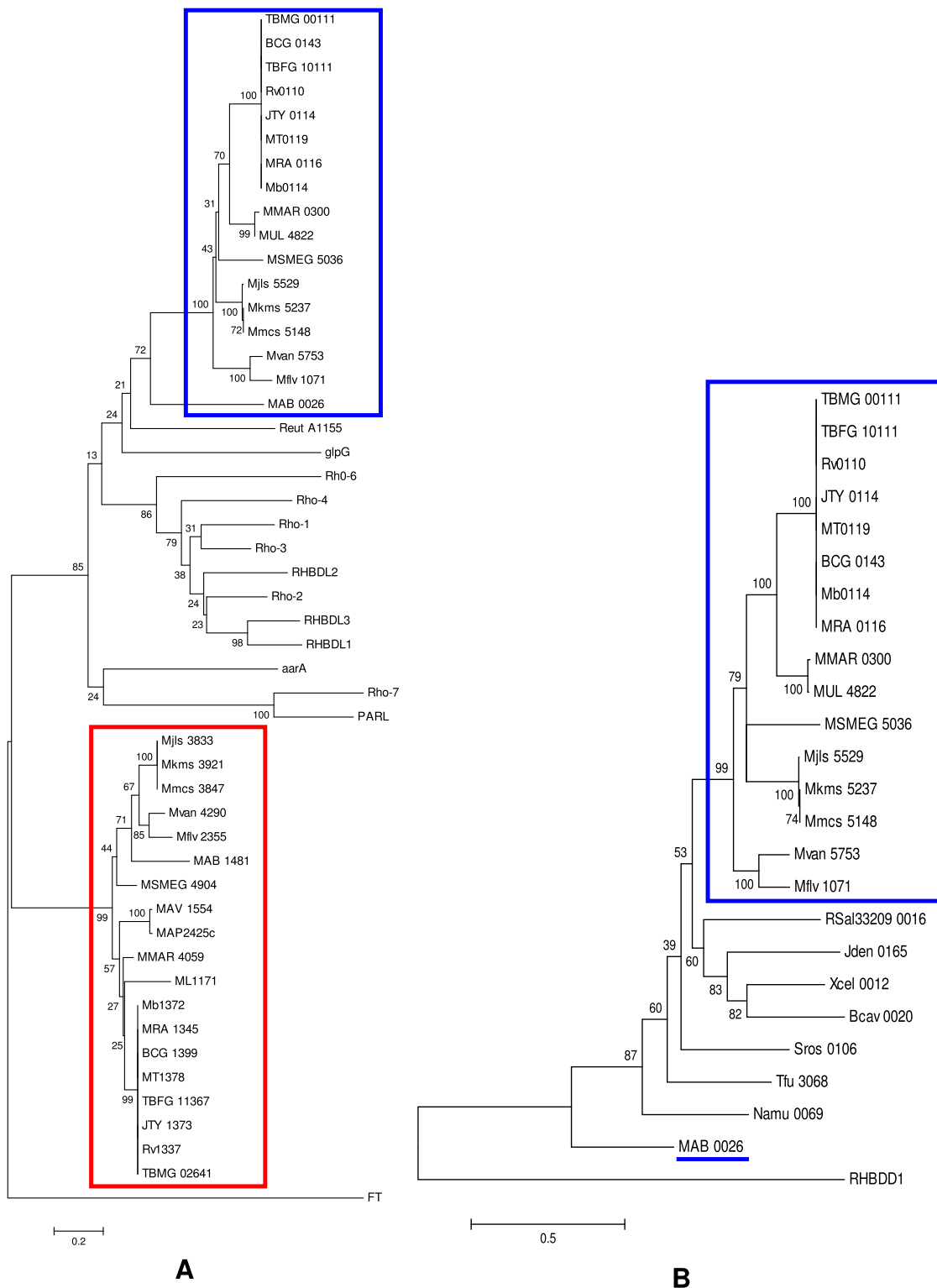
MAB\_0026 of *M. abscessus* which had low homology with Rv0110 also appeared distant and clustered poorly with mycobacterial orthologs, in contrast with its paralog MAB\_1481 (figure 3A). Since orthologs have an ancestral gene in the last common ancestor [47], MAB\_0026 could be a “pseudoortholog” (i.e. it is a distant paralog that appears orthologous due to differential, lineage-specific gene loss [47]). In phylogenetic analysis of mycobacterial rhomboids orthologous to Rv0110, MAB\_0026 was also distant from rhomboids of other actinobacteria (figure 3B). Since *M. abscessus* is one of the earliest species to diverge of all mycobacterial species [39], the low homology could reflect evolutionary distance or stability of this rhomboid. However, the high homology of MAB\_1481 (62% identity with Rv1337) contrasts the low homology of MAB\_0026 (38% identity with Rv0110), negating the notion of evolutionary distance and instead favors evolutionary stability of MAB\_0026.

#### Mycobacterial rhomboids are active rhomboid-serine-proteases

Multiple sequence alignment revealed that all mycobacteria rhomboids contain the putative rhomboid catalytic residues Gly199, Ser201 and His254. The mycobacterial rhomboids also contained two additional C-terminal Histidins (His145 and His150, which together with His254 are universally conserved in the rhomboid proteins [19]) and five invariant transmembrane residues (Gly202, Gly257, Gly261, Asn154 and Ala200) that are also conserved in many rhomboid proteins [33]. However in mycobacteria, Ala252 which occurs in many eukaryotic and prokaryotic rhomboids was substituted by Gly (figure 4). Furthermore, Tyr205 which stabilizes the rhomboid protease active site of glpG [17,33] and of many rhomboid proteases was only conserved in MAB\_0026 of *M. abscessus*, being substituted by Phe in mycobacterial rhomboids (figure 4). Thus, Phe is the stabilizing residue in the protease active site for majority of mycobacterial rhomboids (Phe is an additional stabilizing residue for rhomboid proteases [17]).

The nature of the transmembrane helices (TMHs) formed by mycobacterial rhomboids was analyzed to determine whether they conform to those of active





**Figure 3 Mycobacterial rhomboids have different evolutionary history.** **A:** Mycobacterial rhomboids clustered into two distinct clades (boxed blue and red). The Rv0110 mycobacterial orthologs (boxed blue) clustered with eukaryotic active rhomboids (unboxed). The Rv1337 mycobacterial orthologs (boxed red) appeared unique. Mycobacterial rhomboids could have been acquired at the same time, and the orthologs of Rv0110 were eventually lost in the MAC species and *M. leprae*. Mouse-protein farnesyl transferase, FT, [GenBank: AAI38303] was the outgroup. **B:** MAB0026 of *M. abscessus* (underlined blue) is conspicuously distant from its mycobacterial orthologs (boxed blue).

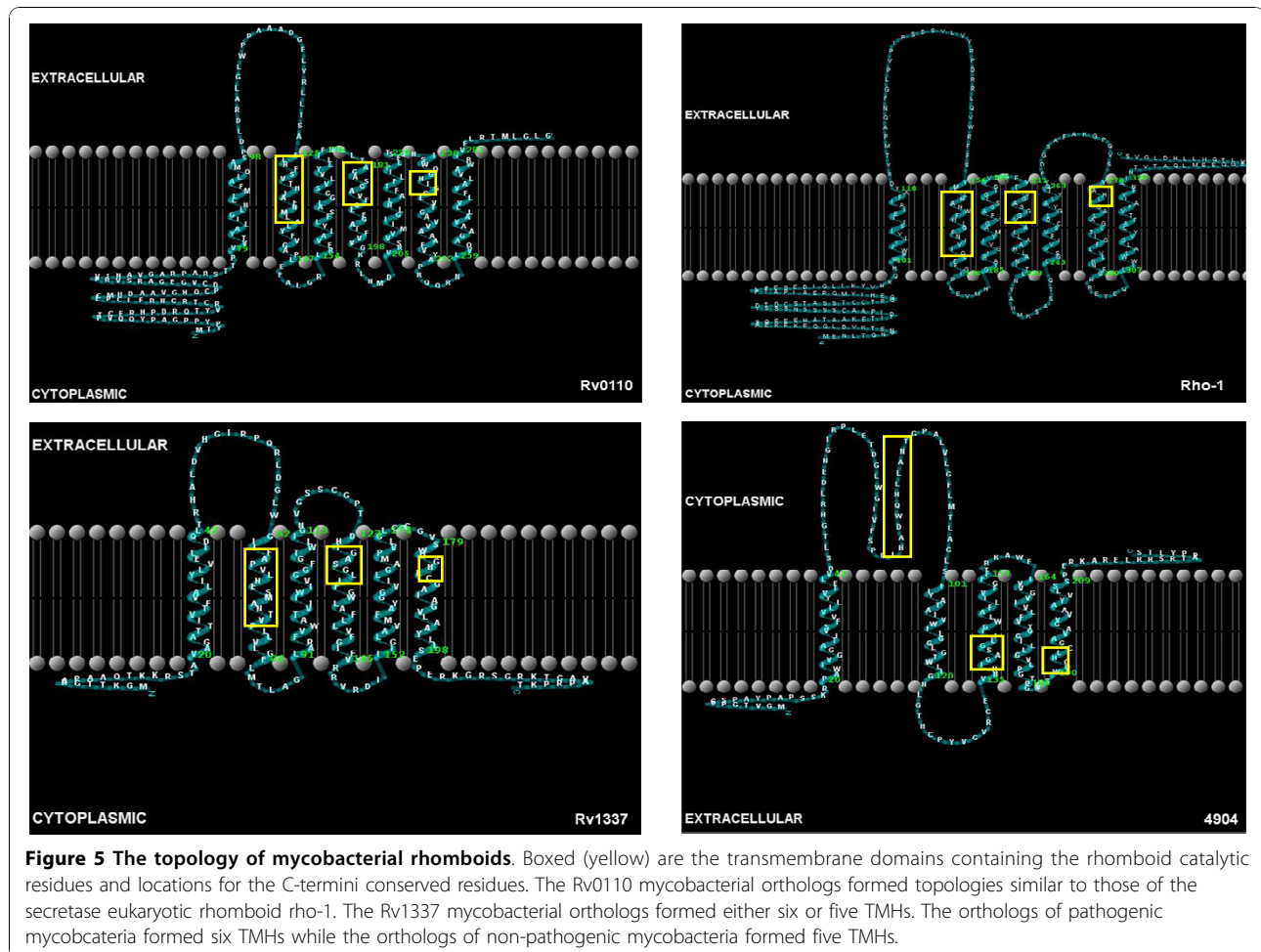


GlpG	86	FAALRERAGPVTVMVMIACVVVF IAM-----	-----QILGDQEE	VMLWLAWPFF--DPTLKFEFWRVYFTHALM	HFLSLM	ILFNLLWVWYV	CGAV	165																																		
Rho1	99	QHW-----	---PWFILVSIIEIAIFAYDRYT---MPAQNFGLPVP	IP	SDSVLVYRP--DR--RLQVWRFFSYMFL	HANWF	HLGFNIVLQVLF	GIPL	180																																	
Ano1	128	MKLWPP-----	PLMMIIFISIMEIIFVVIDIVK-----	TQDQNGTSTSGP	MATLFIYNP--HL--RHEVWRFLTYMFM	HIFGM	MLLNLVQVIFL	GVAL	211																																	
RHBDL2	65	-ANCFP---PPVFIISISLAELAVFIYAVW---	KPKQWITLDTGI	LESFPIYSP--EK--REEAWRFISYMLV	HAGVQ	HLGNLLCMQLV	GIPL	150																																		
Tox1	56	HFSLSK-----	VVLAIISVDWIFIVTVCL-----	DTELELIPAANI	LVFHGANYP--PLIKQGVVRLVLLVFL	HANF	FVFFVFFQLRM	GFTI	139																																	
Fall1	49	HFTWKS-----	FMVVISIQLVFIIISVSI-----	KPADFLTPSDSL	LVTLGANVA--SRIKQGEIHRLLIFL	HANIF	HAFINIFFFQLRM	GFTL	132																																	
aaRA	18	LGAIAL-----	TLTLVLLNIAVYFYQIVF-----	ASPLDSR	ESNLILFGANIYQLSLTDGWWRYP	ISMML	HSNGTHLAFN	CLALFVIG	98																																	
ML1171	31	RRLL-----	RMVGGVTILTFMALLYLVELI-----	DQLTRHS	LDNNGIRLL--K---TDVLWGISFAPVL	HANWQ	HLVANTIP	LLVIGFLI	106																																	
MAV1554	16	-----	STAVAGATTIVTFVALLYLVELI-----	DQLTRHA	LDVHGIRPQ--R--LDGLWGIIFAPVL	HESWQ	HLMAITVP	LLVIGFLM	90																																	
Rv1337	33	-----	PRNVVGGTITLTFVALLYLVELI-----	DQLTRHS	LDVNGIRPL--K---TDGLWGIIFAPVL	HANWQ	HLVANTIP	LLVIGFLI	107																																	
MMAR4059	14	---RP---	RNVGTGATITLTFVALLYLVELI-----	DQLTRHS	LDLNGIRPL--Q---TDGLWGIIFAPVL	HANWQ	HLVANTIP	LLVIGFLM	89																																	
MAB1481	21	-----	QNVTFGGVLVASFVALLYVVEG-I-----	DSVTGHR	LDENGIRPL--E---TDGLDGIIFAPVL	HANWQ	HLVANTIP	LLVIGFL-L	96																																	
MSMEG4904	39	---SP---	ANKTGGITLTFVALLYVVEL--A-----	DQLSGGR	LDNNGIRPL--E---TDGLWGIIFAPVL	HANWQ	HLVANTIP	LLVIGFLV	114																																	
Mflv2355	17	-----	PVWVGGVTIVSFVLLWLIEL-----	FDLITGHR	LDNNGIRPL--E---TDGLTGIIVAPVL	HANWQ	HLVANTIP	LLVIGFLM	91																																	
Mjls3833	19	-----	PAWIVGGATTIVSFVLLVIELV-----	DSLITGHR	LDENGIRPL--E---TDGLWGIIFAPVL	HADWQ	HLVANTIP	LLVIGFLM	93																																	
Mvan4290	16	---RP---	AMVGGTLVLSFVLLVWVIELV-----	DSLITGHR	LDNNGIRPL--E---TDGLAGIIFAPVL	HANWQ	HLVANTIP	LLVIGFLM	91																																	
MAB0026	58	---VKPLQQVRAW---ITWALIAVNVLVYATV---	SDGVGQDVTGSQQL	FRELVIYLP--WVA--QGLWRTVTTGFL	HLGLH	LIANTVPSALV	IGPL	144																																		
Mflv1071	64	---LTP---	VVTYALIGINLAFAL-----	QMASPGL	QRAFGLWSP--AVA--DGEYRLLTSAF	HLFGL	HLAFNMLALYV	IGPL	136																																	
Mvan5753	74	---STTP---	VVTYALIGINLAFAL-----	QMASPGL	DRALGLWSP--AAA--DGEYRLLTSAF	HLFGL	HLAFNMLALYV	IGPL	147																																	
MSMEG5036	80	---GAP---	VVTYALIGINLAFAL-----	QMASPGL	ESRLTLWSP--ALALHDEYRLLTSAF	HLFGL	HLAFNMLALYV	IGPL	143																																	
Mjls5529	73	---SKP---	VVTYALIAVNVLVFVLM-----	QTTSGDL	EREFVLWTP--GVA--DGEYRLLTSAF	HLFGL	HLAFNMLALYV	IGPL	155																																	
Rv0110	34	---ATP---	VVTYALISLNAIVFVM-----	QVTVMGL	ERQALWSP--AVA--SQGYRLLTSAF	HLFGL	HLAFNMLALYV	IGPL	146																																	
MMAR0300	69	---VTP---	VVTFSLIAVSVLVFVL-----	QLVVAGL	GPHLWSP--AVA--DQQLYRLLTSAF	HLFGL	HLAFNMLALYV	IGPL	101																																	
MUL4822	34	---VTP---	VVTFSLIAVSVLVFVL-----	QLVVAGL	GPHLWSP--AVA--DQQLYRLLTSAF	HLFGL	HLAFNMLALYV	IGPL	106																																	
Consensus																																										
GlpG	166	EKRLGSGKLVITLISALLSGYVQ-----	QKFSGPWF-----	GGLS	GVVYALMGYVWLRGERD---PO--SGIY	LRGLI	IFALIWI	VAGWF	242																																	
Rho1	181	EVMHGTARIGVIYAGVFGAGSLGT-----	SVVDSEVFL-----	VGAS	GGVYALAAHLANITLNYAHMK--SAST	GLSSV	IVFVSCD	LGYALY	261																																	
Ano1	212	ELVHCWRRVAGLVLAGVAGSMGT-----	SFTPRVFL-----	AGAS	GGVYALITAHATIMNWKQME--YAI	VQLFV	LVFCV	TDLGVSYI	292																																	
RHBDL2	151	EMVHGKRVGLVLAGVIAGSLAS-----	SIFDPLRVL-----	VGAS	GGVYALMGYVFMNVLVNFQEMIPAF	GIFR	LLII	IVLDMG	FALY	233																																
Tox1	140	ERRYGLLKF7GLYFASAYIGNLLS-----	ATAFFCSNLSK-----	VGAS	TAGFGLIGIQICEMALTWHRRM--HR	DRI	NMVFV	LLMMLMFT	221																																	
Fall1	133	KNGYIMKIIILYFVTGMYNILS-----	SSITYCPK-----	VGAS	SGMGLVIGVITSELILLWHIIR--HR	RVFV	NIIF	SLISFF	YFTY	213																																
aaRA	99	ERAYGKFLLAIAIYISGIGAALEFSAIYQY	YEISNSDLWT--DSTVYITIG	VGAS	GMIAAASVYLIKVVINKP--NPH	PEVI	QRQKY	QLNYLMI	194																																	
ML1171	107	ALA-GLSRFVWVAMVWIFGGASAT-----	WLIIGNMGSSF-----	GPDDH	IGAS	LIIFGWLAF	LLVFG	LVFV--RR--GWDI--	IGCMV	LFA	188																															
MAV1554	91	TLA-GLARFVWATVIWIVVGGFCT-----	WLIIGNVGSSC-----	GPDDH	IGAS	LIIFGWLAF	LLVFG	LVFV--RR--GWDI--	IGCMV	LFA	173																															
Rv1337	108	TLA-GLSRFVWATVIWIVVGGFCT-----	WLIIGNVGSSC-----	GPDDH	IGAS	LIIFGWLAF	LLVFG	LVFV--RR--GWDI--	IGCMV	LFA	190																															
MMAR4059	90	TLA-GLARFVWATVIWIVVGGFCT-----	WLIIGNVGSSC-----	GPDDH	IGAS	LIIFGWLAF	LLVFG	LVFV--RR--GWDI--	IGCMV	LFA	172																															
MAB1481	97	AAAAGVGRFLATAIWIWLVGGVGT-----	WLIIGNIPLFY-----	ETPNH	IGAS	LIIFGWL	TVVIV	GRFFN--RS--VQGL	LI	GVAVL	179																															
MSMEG4904	115	TLA-GLARFVWATVIWIVVGGVGT-----	WLIIGNVGSSC-----	GPDDH	IGAS	LIIFGWL	TVVIV	GRFFN--RS--VQGL	LI	GVAVL	179																															
Mflv2355	92	TLA-GLSRFVWATVIWIVVGGVGT-----	WLIIGNVGSSC-----	GPDDH	IGAS	LIIFGWL	TVVIV	GRFFN--RS--VQGL	LI	GVAVL	179																															
Mjls3833	94	TLA-GLSRFVWATVIWIVVGGVGT-----	WLIIGNVGSSC-----	GPDDH	IGAS	LIIFGWL	TVVIV	GRFFN--RS--VQGL	LI	GVAVL	182																															
Mvan4290	92	TLA-GLSRFVWATVIWIVVGGVGT-----	WLIIGNVGSSC-----	GPDDH	IGAS	LIIFGWL	TVVIV	GRFFN--RS--VQGL	LI	GVAVL	180																															
MAB0026	145	ERAFGGQRYAAIYGTALLGSSAAA-----	MMLSPNAV-----	AGAS	GAIYGLLGAALVLSLRE-----	RNLP	QTII	IVLLN	IGLSI	218																																
Mflv1071	137	EAALGRARFTLYLVLSALGSSVLV-----	YLLTINALT-----	AGAS	GAVPLFGATFVVGKRL-----	NMD	VRSVMA	IVLNL	LAFTFL	210																																
Mvan5753	148	EPALGRLRFVYALYFALGSSVLV-----	YLLTINALT-----	AGAS	GAVPLFGATFVVGKRL-----	NMD	VRSVMA	IVLNL	LAFTFL	221																																
MSMEG5036	154	KWLGLTRFVYALYFALGSSVLV-----	YMLSPNSAT-----	AGAS	GAVPLFGATFVVGKRL-----	NMD	VRSVMA	IVLNL	LAFTFL	228																																
Mjls5529	146	EMWLGRRLRFVYALYFALGSSVLV-----	YLLSPINAT-----	AGAS	GAVPLFGATFVVGKRL-----	NMD	VRSVMA	IVLNL	LAFTFL	220																																
Rv0110	107	EMWLGRRLRFVYALYFALGSSVLV-----	YLIAPLNTAT-----	AGAS	GAVPLFGATFVVGKRL-----	NMD	VRSVMA	IVLNL	LAFTFL	181																																
MMAR0300	142	EMWLGRRLRFVYALYFALGSSVLV-----	YLIAPLNTAT-----	AGAS	GAVPLFGATFVVGKRL-----	NMD	VRSVMA	IVLNL	LAFTFL	216																																
MUL4822	107	EMWLGRRLRFVYALYFALGSSVLV-----	YLIAPLNTAT-----	AGAS	GAVPLFGATFVVGKRL-----	NMD	VRSVMA	IVLNL	LAFTFL	181																																
Consensus																																										
GlpG	243	D-----LFGMSMANCAHIAGLAVGLAMAFV	DSL-----	N	ARRKR--	PWLAAV	VAALS	VVALIM-----	AKV	LAYAG	276																															
Rho1	262	TOYFDGSAFAKGPQVSYIAHHTGALAGLTI	GLFVLVKNFG-----	H	REYEQLIWWLALGVYCAFTVFAIVFN	LINTV	TQA	LMEB	EQG-EVIT	QHLLH	350																															
Ano1	293	NSIN-----	DPDFKVGVIYAHASGALAGLTVLGNL	RNKL-----	V	ESWERK	LWCAV	SIYFV	IMAGIMYH	FLDP	SFHY	361																														
RHBDL2	234	RRFFVP---EDGSPVSAFAHAGGFAAGMSI	GTVFSCFD-----	K	ALLKDPREFWIAIAALYACLVAFVAF	VFNIF	LSPAN-----				303																															
Tox1	221	-----LNGSIDQCHLGGLLCGFISIGMLY	NEH-----	M	NDKPVMYWPWASAAAGIILLALPA	ACFP	ILYAV	DRCH	RDL	SYI-----	293																															
Fall1	213	-----FNGSNIDHVCCHLGGLLCGFISIG	MLYNEH-----	L	DNKPRWYNHLKIGSYISLVLLAI	IPTV	VFL	TI	PRC-----		278																															
aaRA	195	LTILN-----	GLQSGVDNAAHIGGCAIIGALISAYLL	-----	V	PHKLRVAN	LCI	TIAA	SLLT	MMI	XYLSF	SNKHL	LEEREF	IYQ	EVY	TELA	278																									
ML1171	189	PVL-----	GRCCGVSWQCHLCCAIAGVVAAYLLSS	-----	P	ERKTR--	ALK	EAG	TSP	RLK	-----							237																								
MAV1554	174	PVL-----	GLCCGVSWQCHLCCAIAGVVAAYLLSS	-----	P	ERKGR--	SGR	K	T	GAV	AP	RP	PKT	-----				223																								
Rv1337	191	PVL-----	QCQGVSWQCHLCCAIAGVVAAYLLSS	-----	P	ERKAR--	ALK	R	A	G	A	R	S	G	H	P	K	L	-----	240																						
MMAR4059	173	PRL-----	GVCCGVSWQCHLCCAIAGVVAAYLLSS	-----	P	ERKAR--	ELK	K	A	G	E	R	P	S	S	P	K	T	-----	225																						
MAB1481	180	P-----	QFGVSWQCHLCCAIAGVVAAYLLSS	-----	S	GRERK	VQ	A	R	C	A	R	C	P	P	R	L	T	P	-----	222																					
MSMEG4904	198	PVL-----	NGCCGVSWQCHLCCAIAGVVAAYLLSS	-----	P	ERKAR--	D--	SR	K	R	S	R	P	L	T	S	-----			245																						
Mflv2355	180	P-----	GTPGVSWQCHLCCAIAGVVAAYLLSS	-----	P	ERKTR--	AL	R	R	P	V	R	P	S	L	N	T	-----		225																						
Mjls3833	183	P-----	GTPGVSWQCHLCCAIAGVVAAYLLSS	-----	P	ERKAR--	EL	R	S	R	T	A	P	P	L	T	S	-----		229																						
Mvan4290	181	P-----	GTPGVSWQCHLCCAIAGVVAAYLLSS	-----	P	ERKAR--	ERR	K	A	T	N	P	L	T	T	-----				225																						
MAB0026	219	L-----	PGISLAGEMGCLLFGVLSAGALLYRE	VRCRGI	GMPDLA	RKAST--	P	W	L	A	A	V	A	L	S	V	A	L	I	M-----	AKV	LAYAG	287																			
Mflv1071	211	IPL-----	FTSQNISWQCHIGGLVIGALVAAAFY	-----	A	PRAQR--	T	L	I	Q	A	G	A	V	G	A	L	L	V	V	F	V	G	L	I	V	W	R	T	A	E	L	R	T	L	M	L	G	L	-----	279	
Mvan5753	222	IPL-----	FTSQNISWQCHIGGLVIGALVAAAFY	-----	A	PRQQR--	N	L	V	Q	A	G	A	V	A	L	L	V	F	V	A	L	V	A	W	R	T	V	E	L	R	T	L	M	L	G	L	-----	290			
MSMEG5036	229	GP-----	ALGTAIISWQCHIGGLVIGALVAAAFY	-----	A	PRERR--	T	A	T	A	A	G	V	T	V	A	F	A	M	L	F	A	L	I	F	W	R	T	D	R	L	F	L	L	G	A	-----	286				
Mjls5529	221	YPL-----	ISGGQVSWQCHVGGVLTGAAIAGVYAY	-----	A	PAGRR--	N	L	V	Q	G	G	T	A	A	V	L	L	F	V	V	L	V	W	R	T	E	E	I	F	A	M	P	G	R	L	-----	289				
Rv0110	182	APA-----	PAISWQCHVGGVLTGAAIAGVYAY	-----	A	PRERR--	N	L	I	Q	A	T	V	T	I	V	L	V	A	F	V	V	L	I	G	W	R	T	V	D	L	A	L	F	P	G	R	L	N	L	-----	249
MMAR0300	217	APA-----	VGSQVLSWQCHVGGVLTGAAIAGVYAY	-----	A	PRERR--	N	F	I	Q	G	A	V	T	I	V	A	F	V	V	L	I	W	R	T	S	E	L	A	M	F	G	H	L	N	L	G	-----	289			
MUL4822	182	APA-----	VGSQVLSWQCHVGGVLTGAAIAGVYAY	-----	A	PRERR--	N	F	I	Q	G	A	V	T	I	V	A	F	V	V	L	I	W	R	T	S	E	L	A	M	F	G	H	L	N	L	G	-----	254			
Consensus																																										

**Figure 4** Mycobacterial rhomboids are active rhomboid proteases. Highlighted in blue are the rhomboid catalytic dyad residues (Ser201 and His254); yellow, the invariant residues in this alignment; grey, the rhomboid family invariant residues that were not conserved in this alignment. Locus tags for mycobacterial rhomboids are boxed blue. Included: aaRA [GenBank: L28755] of *P. stuartii*; glpG [GenBank: AAA23890] of *E. coli*; rho-1 [GenBank: AAF47496.1] of *Drosophila*; (Ano1) AgaP\_AGAP004737 [GenBank: XP\_318085] of *Anopheles gambiae*; (Tox1) [GenBank: #Q695U0] of *Toxoplasma gondii*; (Fall1) PF11\_0149 [GenBank: XP\_001347820] of *P. falciparum* and RHBDL2 [GenBank: NP\_060291.2] of human.

rhomboid proteases. Mycobacterial orthologs of Rv0110 formed seven TMHs and topologies similar to those of eukaryotic rhomboid rho-1 of *Drosophila* (see figure 5). As in rho-1, the rhomboid catalytic residues GxSx & H (Gly199, Ser201 and His254, × being any residue) were localized respectively, in TMH4 and TMH6 (see figure 5

and details in additional file 1). In mycobacterial orthologs of Rv0110, the two C-terminal histidine and asparagine (His145, His150 and Asn154) were localized in TMH2, in contrast to eukaryotic rhomboid proteases which have these residues in TMH3 [17,19,23]. However, in our analyses, we found His145, His150 and



Asn154 in TMH2 in rho-1, similar to Rv0110 (see additional file 2). Despite the proteins being evolutionary diverse, other studies found the overall structure of TMHs of rhomboid proteases conserved, with eukaryotic rhomboid proteases containing seven TMHs while archaea and eubacteria contain six [23,49]. It is not clear whether these similarities infer evolutionary or functional significance; similar topologies with eukaryotic rhomboids could imply occurrence of a common bacterial universal progenitor for the eukaryotic rhomboids [19]. Nevertheless, prokaryotic and eukaryotic integral transmembrane proteins can have similar architecture, with striking similarity in the amino acid frequency distribution in their TMHs [50].

In contrast, the mycobacterial orthologs of Rv1337 formed either six or five TMHs, as observed in most bacterial and archaeal rhomboids [19]. The orthologs of pathogenic mycobacteria formed six TMHs, while those of non-pathogenic mycobacteria formed five (see figure 5). The GxSx and H catalytic residues were found respectively, either in TMH4 and TMH6 (for Rv1337

orthologs of pathogenic mycobacterial with six TMHs -see details in additional file 3) or in TMH3 and TMH5 (for Rv1337 orthologs of non pathogenic mycobacterial with five TMHs, see additional file 4). The mycobacterial orthologs with six TMHs had the two C-terminal His and Asn residues in TMH2, as in the Rv0110 orthologs; however, in the orthologs with five TMHs, these residues were outside the TMHs (see additional file 4). Although His145, His150 and Asn154 are not essential for catalytic activity [33], it is not clear whether their absence in TMHs can affect functionality. This seems unlikely in that functions have been ascribed to the catalytically inert eukaryotic iRhoms lacking the minimum catalytic sites [26,27]. Alternatively, the observed differences may imply functional divergence, with rhomboids of pathogenic mycobacteria being functionally different from those of non-pathogenic mycobacteria. Indeed, Rv1337 was essential for the survival of the tubercle bacilli in macrophages [38]. Nevertheless, experimental evidence will be necessary for validation of these assertions.

### Extra protein domains in mycobacterial rhomboids

Mycobacterial rhomboids contained extra protein motifs, many of which were eukaryotic. The orthologs of Rv0110 contained diverse eukaryotic motifs, while the Rv1337 orthologs maintained a fairly constant number and type of motifs, either fungal cellulose binding domain or bacterial putative redox-active protein

domains (table 2). It is difficult to account for the origin of eukaryotic motifs in mycobacterial rhomboids; nevertheless, extra protein motifs are common in eukaryotic rhomboids where their significance is also not known [17]. Since eukaryotic rhomboids are presumed to have been acquired from bacteria through horizontal gene transfer mechanisms [19], the extra protein motifs may

**Table 2 Extra protein motifs in mycobacterial rhomboids**

Species/strain	Rhomboid	Number of <sup>a</sup> TMHs	TMH with active Site	Extra motif	E-value	Target signal
<sup>b</sup> H37Rv	Rv0110	7	4 & 6	DUF1751 <sup>1</sup>	0.27	Mitochondrial
				Siva <sup>2</sup>	0.68	
				Zf-B_box <sup>3</sup>	0.00021	
<i>M. marinum</i>	MMAR_0300	7	4 & 6	Zf-B_box	0.00012	Other
				FixQ <sup>4</sup>	0.016	
<i>M. ulcerans</i>	MUL_4822	7	4 & 6	EcsB <sup>5</sup>	0.17	Mitochondrial
<sup>c</sup> <i>M. sp</i> Jls	Mjls_5528	7	4 & 6	IBR <sup>6</sup>	0.301	Other
				Zf-B_box	0.013	
				Dynactin p62 <sup>7</sup>	0.24	
				Tim17 <sup>8</sup>	0.36	
<i>M. vanbaalenii</i>	Mvan_5753	7	4 & 6	Zf-B_box	0.0044	Other
				Dynactin p62	0.11	
				DUF1751	0.028	
<i>M. gilvum</i>	Mflv_1071	7	4 & 6	Zf-B_box	0.015	Other
				DUF1751	0.02	
<i>M. smegmatis</i>	MSMEG_5036	7	4 & 6	-		Mitochondrial
<i>M. abscessus</i>	MAB_0026	7	4 & 6	Zf-B_box	0.0064	Other
H37Rv	Rv1337	6	4 & 6	CBM_1 <sup>9</sup>	0.17	Mitochondrial
<i>M. marinum</i>	MMAR_4059	6	4 & 6	C_GCAxxG_C_C <sup>10</sup>	0.0062	Secretory
<i>M. avium</i>	MAV_1554	6	4 & 6	C_GCAxxG_C_C	0.0099	Secretory
<i>M. leprae</i>	ML1171	6	4 & 6	C_GCAxxG_C_C	0.031	Other
<i>M. abscessus</i>	MAB_1481	6	4 & 6	-		Other
<i>M. smegmatis</i>	MSMEG_4904	5	3 & 5	C_GCAxxG_C_C	0.025	Secretory
<i>M. sp</i> Jls	Mjls_3833	5	3 & 5	DUF2154 <sup>11</sup>	0.6	Secretory
<i>M. vanbaalenii</i>	Mvan_4290	5	3 & 5	-		Secretory
<i>M. gilvum</i>	Mflv_2355	5	3 & 5	-		Secretory

The rhomboid family domain was excluded.

-: Extra domain not detected.

Other: cellular localization target other than secretory and mitochondrial.

<sup>a</sup>: Transmembrane helices.

<sup>b</sup>: *Mycobacterium tuberculosis*.

<sup>c</sup>: *Mycobacterium* species Jls.

<sup>1</sup>: Eukaryotic integral membrane protein.

<sup>2</sup>: Cd27 binding protein.

<sup>3</sup>: B-box zinc finger.

<sup>4</sup>: Cbb3-type cytochrome oxidase component.

<sup>5</sup>: Bacterial ABC transporter protein.

<sup>6</sup>: In Between Ring 'IBR' fingers.

<sup>7</sup>: Dynactin p62 family.

<sup>8</sup>: Tim17/Tim22/Tim23 family.

<sup>9</sup>: Fungal cellulose binding domain.

<sup>10</sup>: Putative redox-active protein.

<sup>11</sup>: Predicted membrane protein.

have originated from prokaryotic progenitors. Mycobacterial rhomboids also contained N-signal peptides and eukaryotic subcellular localization target signals which were either mitochondrial or secretory (see table 2), with scores higher than or comparable to those of rho-7 and PARL. These observations further allude to a common ancestor for mycobacterial and eukaryotic active rhomboids [17].

#### A novel nonsense mutation at the Trp73 codon split the MAP rhomboid into two hypothetical proteins

The annotated rhomboid of *M. avium* subsp. *Paratuberculosis* (MAP) in the genome databases appeared truncated; MAP\_2425c (hypothetical protein) was significantly shorter than MAV\_1554 of genetically related *M. avium* (147 vs. 223 residues, respectively). Upstream of MAP\_2425c was MAP\_2426c (74 residues), similar to the amino-terminal portion of MAV\_1554 (100% identity) while the former (MAP\_2425c) was similar to the carboxyl-terminal portion of MAV\_1554 (100% identity). MAP\_2425c and MAP\_2426c were separated by 10 bp that translate into three residues

(Gln, His and Lys, present in similar location in MAV\_1554) and a stop codon TGA, at nucleotide position 217, which split the homolog into two ORFs. Because MAP and *M. avium* are genetically related, initially, we thought MAP2425c and MAP2426c are truncated portions (resulting from genome annotation errors) and should have been a whole rhomboid of MAP. Thus, we aimed to determine the correct annotation for the MAP rhomboid. Using MAV\_1554 specific primers, we PCR-amplified and sequenced homologs of MAP2425c and MAP2426c (954 bp) from a cattle isolate of MAP (strain 27, see table 3); the amplicon was similar to MAP2426c and MAP2425c (containing an internal stop codon TGA at nucleotide positions 217-219, and 10 bp translating into residues Gln, His and Lys, in similar location as those of MAV1554). Thus, we confirmed the annotations for MAP2425c (hypothetical protein) and MAP2426c (hypothetical protein). It was later revealed that a nonsense mutation at nucleotide positions 217-219 (formerly TGG, the codon for Trp73), substituted guanine at the wobble position for adenine, creating a stop codon (i.e. TGG[Trp73]→TGA[stop

**Table 3 Features of PCR-amplified mycobacterial rhomboids**

	Primer	Species/ Strain	Amplicon size (bp)	ORF (bp)	Amino acids	Accession number <sup>h</sup>	Protein ID
Orthologs of Rv0110 (rhomboid protease 1)	0110F 0110R	<sup>a</sup> H37Rv	967	855	284	HM453890	ADO17908
		<sup>b</sup> BCG	967	855	284	HM453894	ADO17912
		<sup>c</sup> JN55	967	855	284	HM453896	ADO17914
		<sup>d</sup> BN44	967	855	284	HM453892	ADO17910
	5036F 5036R	<sup>e</sup> SMR5	1000	891	296	HM453900	ADO17919
Orthologs of Rv1337 (rhomboid protease 2)	1337F 1337R	H37Rv	869	723	240	HM453891	ADO17909
		BCG	869	723	240	HM453895	ADO17913
		JN55	869	723	240	HM453897	ADO17915
		BN44	869	723	240	HM453897	ADO17911
	1554F 1554R	<sup>f</sup> SU-36800	954	672	223	HM453898	ADO17916
		<sup>g</sup> 27	954	291 <b>(MAP2426c)</b>	72	HM453899	ADO17917
			444 <b>(MAP2425c)</b>	147	HM453899	ADO17917	
4904F 4904R	SMR5	845	738	245	HM453901	ADO17920	

<sup>a</sup>: *M. tuberculosis*.

<sup>b</sup>: *M. bovis*.

<sup>c</sup>: *M. bovis* (cattle isolate).

<sup>d</sup>: *M. tuberculosis* (patient isolate).

<sup>e</sup>: *M. smegmatis* (streptomycin resistant derivative of MC<sup>2</sup>155).

<sup>f</sup>: *M. avium* (patient isolate).

<sup>g</sup>: *M. avium* subsp. *Paratuberculosis* (cattle isolate).

<sup>h</sup>: Accession numbers are for GenBank.

Primer sequences are described in methods.

codon)). Usually, nonsense mutations disrupt ORFs resulting in truncated and non-functional proteins; however, this rare scenario resulted into two unique ORFs of MAP, providing the first evidence of a split rhomboid, contrasting whole orthologs of genetically related species. Although the significance of this is currently not known, cDNA was amplified from both ORFs, implying that both hypothetical proteins may be expressed (see figure 6).

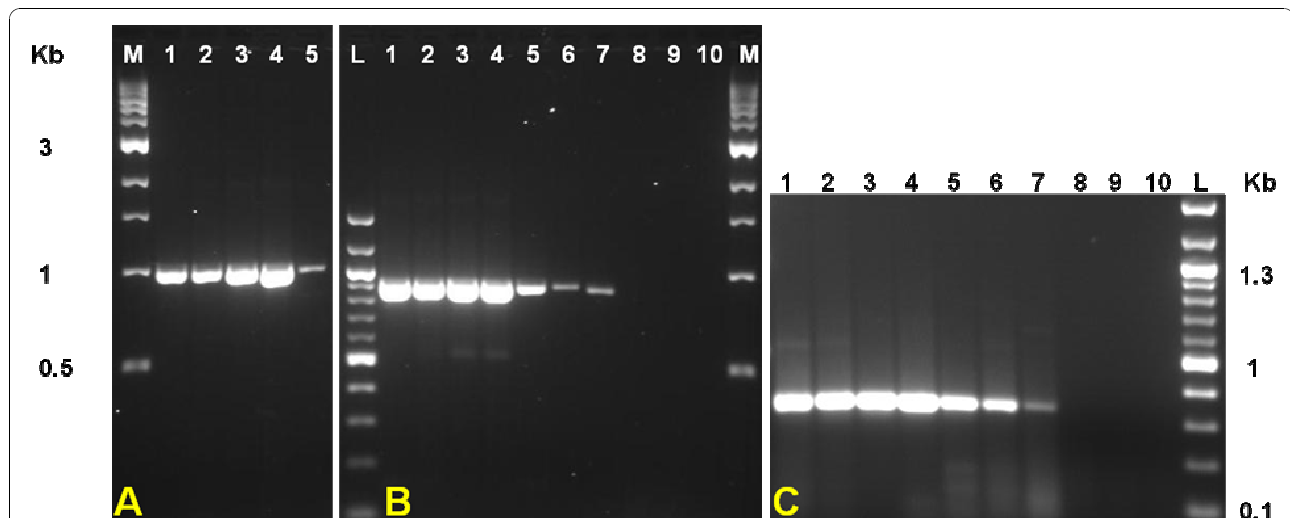
#### What are the lengths of MTC rhomboids?

In genome databases, the lengths for annotated sequences of rhomboids from genetically related mycobacteria vary, and initially we thought this reflected strain diversity. For instance, lengths for Rv0110 orthologs of MTC species are either 249 or 284 residues, while Rv1337 orthologs from the same species are 240 residues. In contrast, MT1378 (ortholog of Rv1337) of *M. tuberculosis* CDC 1551 is 227 amino acids, 13 residues shorter at the NH<sub>2</sub>-terminus. Thus, we aimed to validate the sizes of rhomboids from related strains/species. Genomic analyses at the rhomboid loci for the sequenced MTC genomes revealed that MTC rhomboid orthologs are 100% identical and are of equal length. Rhomboids were PCR-amplified from MTC with common primer sets for each ortholog (see methods), and sequencing data confirmed that MTC rhomboid orthologs are identical and are of the same size (284 residues

for Rv0110 orthologs and 240 residues for Rv1337 orthologs). Rhomboid sequences were deposited in GenBank and accession numbers were assigned (see table 3).

#### Putative gene clusters for mycobacterial rhomboids

To determine putative functional coupling between mycobacterial rhomboids and other genes, genes in clusters formed by mycobacterial rhomboids at the KEGG database [51] were analyzed. The gene cluster formed by Rv1337 was conserved across the genus and extended to other actinobacteria such as *Norcardia* and *Corynebacteria*. This cluster included 58 genes (Rv1311 to Rv1366, see additional file 5) of which some are essential and others are required for the growth of *M. tuberculosis* in macrophages [38], a necessary step during pathogenesis of the tubercle bacillus. Conversely, the Rv0110 orthologs formed clusters reflecting the genetic relatedness of mycobacteria. Thus, the orthologs from MTC species and *M. marinum* formed similar clusters consisting of 61 genes (Rv0080 to Rv0140, see additional file 6). These clusters also included essential genes and those required for survival of the tubercle bacillus in macrophage. However, MUL\_4822 of genetically related *M. ulcerans* was not included in the MTC/*M. marinum* cluster, and formed a unique cluster consisting of only 19 genes (MUL\_4791 to MUL\_4824) with two genes upstream of the rhomboid (MUL\_4823 and MUL\_4824, see additional file 7). It is not certain whether this



**Figure 6 Transcription analysis of mycobacterial rhomboids.** A. RT-PCR amplification of Rv0110 cDNA from MTC and *M. smegmatis* mRNA. Lanes: M, 1 kbp DNA ladder; 1, *M. tuberculosis* H37Rv; 2, *M. tuberculosis* BN44; 3, *M. bovis* BCG; 4, *M. bovis* JN55 and 5, *M. smegmatis* SMR5. B. RT-PCR amplification of Rv1337 cDNA from MTC, MAC and *M. smegmatis* mRNA. Lanes: L, 100 bp DNA ladder; 1, *M. tuberculosis* H37Rv; 2, *M. tuberculosis* BN44; 3, *M. bovis* BCG; 4, *M. bovis* JN55; 5, *M. avium*; 6, *M. avium* subsp. *Paratuberculosis*; 7, *M. smegmatis* SMR5; 8, negative control (*M. tuberculosis* mRNA, not reverse transcribed); 9, negative control (*E. coli* mRNA, reverse transcribed); 10, negative control (water). C. Similar assays as in B showing cDNA amplification (~350 bp) of the internal fragment of Rv1337 orthologs. Negative controls for panel "A" (not shown) were similar to 8, 9 & 10.

reflects functional divergence of MUL\_4822 from Rv0110, in spite of evolutionary relatedness of *M. ulcerans* and MTC species.

The gene cluster of Rv0110 orthologs of *M. vanbaaleonii*, *M. gilvum* and *Mycobacterium* species Jls, Kms and Mcs were also similar, and consisted of 48 genes (Mjls\_5512 to Mjls\_5559, see additional file 8), whose orthologs in MTC species are required for the growth of the tubercle bacillus in macrophages [38]. Conversely, the cluster for MAB\_0026 of *M. abscessus* consisted of only three genes (MAB\_0024, MAB\_0025 and MAB\_0026), shared with actinobacteria other than mycobacteria. Many MTC orthologs in the gene clusters of MUL\_4822, Mjls\_5529 and MAB\_0026 are required for the growth of the bacillus in macrophages, the implication of which requires further study. There was no gene cluster formed by MSMEG\_5036 of *M. smegmatis*. The essential genes in mycobacterial rhomboid gene clusters are described in additional file 9.

#### Transcription analysis

Due to their ubiquity in eubacteria, we aimed to determine the expression of mycobacterial rhomboids in a preliminary fashion by screening for in vivo transcription. RT- (Reverse Transcriptase) PCRs amplified rhomboid cDNAs from mycobacterial mRNA, indicating that both copies of mycobacterial rhomboids are transcribed, and possibly expressed (see figure 6).

#### Functional insights

##### Signal transduction and Metabolite transport

Since mycobacterial rhomboids contain rhomboid catalytic signatures, they may be functionally similar to *aarA* and *rho-1*, rescuing phenotypes associated with deletion of these genes in *P. stuartii* and *D. melanogaster* rhomboid mutants [52]. Due to their diverse functions, rhomboids appear good candidates for investigation in studies elucidating inter/intra-species/kingdom signaling mechanisms [29,53-55].

Furthermore, *gluP* (contains a rhomboid domain) of *B. subtilis* is involved in sugar transport [17,32], while *aarA* activates the TatA protein transporter in *P. stuartii* [31]. As such, the putative gene clusters for mycobacterial rhomboids contained putative metabolite transporters and transcriptional regulators. Since genes in clusters for transport and signal transduction genes tend to have similar roles [56], mycobacterial rhomboids may have such roles.

##### Roles in pathogenesis?

In a TraSH analysis by Rengarajan et al, Rv1337 was required for the survival of *M. tuberculosis* H37Rv in macrophages [38], a necessary step during the development of TB. The genome wide conservation of Rv1337 alludes to a possibly important protein. The pathogenesis

of *M. ulcerans*, (the only mycobacterium lacking the Rv1337 ortholog) is known and it culminates in skin ulcerations caused by the plasmid encoded polyketide toxin -mycolactone [4,40,44,57]. Buruli ulcer contrasts with the tuberculous nature of lesions formed by many pathogenic mycobacteria, whose pathogenesis is not well understood and remains a vast field of study.

##### Moonlighting properties?

It is possible to predict functional coupling between genes based on conservation of gene clusters among genomes [56,58]. Since proteins encoded by conserved gene pairs appear to interact physically [58], the evolutionary conservation of the Rv1337 genome arrangement might have functional implications. *mur1* is a moonlighting protein (ability to perform multiple independent functions [59]) that exhibits both racemization and DNA gyrase activities [59]. Since rhomboids are known for diverse functions, the proximity of Rv1337 orthologs with a moonlighting protein makes them suspects for moonlighting properties.

#### Conclusions

##### Mycobacterial rhomboids have different evolutionary history

The two mycobacterial rhomboids are phylogenetically distinct and could have been acquired independently. The mycobacterial orthologs of Rv0110 (rhomboid protease 1) appear to be under evolutionary pressure; hence they were lost in the MAC species and *M. leprae*. These orthologs represent prokaryotic rhomboids whose progenitor may be the ancestor for eukaryotic rhomboids. The Rv1337 (rhomboid protease 2) mycobacterial orthologs appear more stable and are conserved nearly in all mycobacteria, possibly alluding to their importance in mycobacteria.

MAP2425c and MAP2426c provide the first evidence of a split rhomboid contrasting whole orthologs of genetically related species.

##### Mycobacterial rhomboids are active rhomboid proteases

Mycobacterial rhomboids are active rhomboid proteases, with the active site being stabilized by Phe. Although valuable insights to the roles of rhomboids are provided, the data herein only lays a foundation for future investigations for the roles of rhomboids in mycobacteria.

#### Methods

##### Strains and cultures

*Mycobacterium smegmatis* SMR5 (streptomycin resistant derivative of MC<sup>2</sup>155) and *M. avium* (patient isolate SU-36800) were obtained from the Joint Clinical Research Center (JCRC), Kampala, Uganda. The streptomycin resistant derivatives of *M. tuberculosis* H37Rv and *M. bovis* BCG were provided by Dr. Peter Sander,



University of Zurich, Switzerland. *M. tuberculosis* BN44 and *M. bovis* JN55 are characterized clinical isolates [60,61]. *M. avium* subsp. *Paratuberculosis* was provided by Dr. Julius B. Okuni, Faculty of Veterinary Medicine, Makerere University. *M. smegmatis* was cultured in LB/0.05% Tween 80 containing 200 µg/ml streptomycin. MTC and MAC strains were cultured in middlebrook 7H9 or 7H10 (supplemented with mycobactin for MAP cultures).

#### PCR conditions

Chromosomal DNA was extracted from mycobacteria by boiling heat-killed cells for 10 min and centrifuging briefly at 5000 g to obtain the supernatant containing DNA. Amplification reactions contained 20 pmol each of the rhomboid specific forward and reverse primers (see below), 1.5 U of high fidelity *Taq* polymerase (Roche Applied Science, Mannheim, Germany), Custom PCR Master Mix (Thermo Scientific, Surry, UK), ~200 ng template DNA and nuclease-free water in a reaction volume of 10 µL. The reactions were performed in a Peltier thermocycler (MJ Research, Waterman, MA, USA) at the following conditions: initial denaturation at 94°C for 5 min, followed by 30 cycles each consisting of 94°C, 0.5 min; 60°C, 0.3 min & 72°C, 1 min, with a final extension at 72°C for 10 min. Following amplification, the amplicons were purified with QIAquick PCR purification kit (Qiagen, Hilden, Germany) and sequenced at ACGT (Wheeling, IL, USA). After analyzing with BioEdit software and BLAST algorithm for similarity searches, rhomboid sequences were deposited in the GenBank database (see table 3 for accession numbers).

The following primers were used: 0110F, 5'-ATA TTCGGCTTCGCCGAACC-3' (forward) and 0110R, 5'-ACGCGAAGACAAGCGGCTATC-3' (reverse) for MTC Rv0110 orthologs; 1337F, 5' ACGCCGGGTG-GAAGTATCTG-3' (forward) and 1337R, 5'-CCG ACGCCGGAATCAAAGACTC-3' (reverse) for MTC Rv1337 orthologs. For MAC species, primer pair 1554F, 5'-TCGACGGTGACACCGTGTTTC-3' (forward) and 1554R, 5'-TGCCGAGCTCATGTCTTGGG-3' (reverse) was used. For *M. smegmatis*, primer pairs 5036F, 5'-ACGGCCGGGTGAGACAAATC-3' (forward) and 5036R, 5'-TGGACCCGGACAACATCCTG-3' (reverse) for homolog MSMEG\_5036; 4904F, 5'-ACGCCGGATG-GAAGTATCTG-3' (forward) and 4904R, 5'-ACACCG-GAATCGAAGATCCC-3' (reverse) for homolog MSMEG\_4904 were used. Primers were synthesized by IDT (Leuven, Belgium).

#### Transcription assays

mRNA was purified from mycobacteria with the Oligo-tex mRNA mini kit (Qiagen, Hilden, Germany) and ~60 ng/µl (in 15 µl) mRNA used as template for cDNA

synthesis. Reverse Transcriptase-PCRs were performed with the Titan One Tube RT-PCR System (Roche Applied Science, Mannheim, Germany) to amplify Rv0110 and Rv1337 cDNAs in separate reactions. Except for the initial cDNA synthesis step (50°C for 30 min), PCR conditions were similar to those described above. RT-PCRs were repeated with primers (1337int1: TGGACGTCAACGGCATCAG, forward, and 1337int2: CCAGCCCAATGACGATATCCC, reverse) that amplify an internal fragment (~350 bp) of Rv1337 orthologs.

#### Bioinformatic analyses

##### Identification of rhomboids in mycobacteria

Rhomboid sequences for rho-7 [GenBank: NP\_523704.1] of *D. melanogaster*, PARL [GenBank: NP\_061092.3] of human, glpG [GenBank: AAA23890] of *E. coli* and aarA [GenBank: L28755] of *P. stuartii* were obtained from GenBank [62]. These sequences were used as queries in BLAST-searches for rhomboid homologs from an array of mycobacterial genome databases: "tuberculist" [63], GIB-DDBJ [64] and J. Craig Venter institute [65].

##### Sequence analysis

The similarity between mycobacterial rhomboids was determined using specialized BLAST bl2seq for comparing two or more sequences [66]. Multiple sequence alignments were performed with ClustalW [67] or MUSCLE [68]. Mycobacterial rhomboids were examined for the presence of rhomboid family domains and catalytic signatures (GxSx). The TMH predictions were done using the TMHMM Server v. 2.0 [69]. The data generated was fed into the TMRPres2D [70] database to generate high resolution images. Cellular localization signals were predicted using TargetP 1.1 server [71].

##### Phylogenetic analysis

Phylogenetic analysis was conducted using MEGA4 software [72]. The evolutionary history of mycobacterial rhomboids was determined using the Neighbor-Joining method. The percentage of replicate trees in which the associated taxa clustered together was determined using the Bootstrap test (1000 replicates). The evolutionary distances were computed using the Poisson correction method and are in the units of the number of amino acid substitutions per site. All positions containing gaps and missing data were eliminated from the dataset (complete deletion option). For comparison of evolutionary history, trees were also constructed using "Minimum Evolution" and "Maximum Parsimony".

##### Functional predictions

To predict possible roles for mycobacterial rhomboids, sequences were analyzed at the KEGG database [51] for the genome arrangement, presence of extra protein domains, nature of gene clusters, orthologs and paralogs. Other parameters used to glean functions from mycobacterial rhomboid sequences included analyzing their



topologies. To predict functional relatedness among genes within mycobacterial rhomboid clusters, sequences in the clusters were aligned by ClustalW, and Neighbor-Joining trees deduced using default settings.

## Additional material

**Additional file 1: The topology and location of catalytic residues in mycobacterial rhomboid protease 1 (Rv0110 orthologs).** As in rho-1, the catalytic residues are located in TMH4 (Gly199 and Ser201) and TMH6 (His254), while His145, His150 and Asn154 are in TMH2.

**Additional file 2: The topology and location of catalytic residues in rho-1 of Drosophila.** As in mycobacterial rhomboid protease 1, the catalytic residues are located in TMH4 (Gly199 and Ser201) and TMH6 (His254), while His145, His150 and Asn154 are in TMH2.

**Additional file 3: The topology and location of catalytic residues in mycobacterial rhomboid protease 2 (Rv1337 orthologs).** The orthologs of pathogenic mycobacteria formed six TMHs, with catalytic residues in TMH4 (Gly199 and Ser201) and TMH6 (His254). His145, His150 and Asn154 are located in TMH2 as in rhomboid protease-1 (Rv0110 orthologs).

**Additional file 4: The topology and location of catalytic residues in mycobacterial rhomboid protease 2 (Rv1337 orthologs) of nonpathogenic mycobacteria.** These rhomboids formed five TMHs, with catalytic residues in TMH3 (Gly199 and Ser201) and TMH5 (His254), while His145, His150 and Asn154 are outside the TMHs (boxed).

**Additional file 5: ClustalW-Neighbor Joining analysis of the genes in Rv1337 cluster.** Boxed (blue) are the genes that grouped with Rv1337. Essential genes in this clade are Rv1327c, Rv1327c, Rv1331, Rv1340 and Rv1344.

**Additional file 6: ClustalW-Neighbor Joining analysis of the genes in Rv0110 cluster.** Boxed (blue) are the essential genes in that grouped with Rv0110 (Rv0118c, Rv0127, Rv0107c, Rv0116c, Rv0121c, Rv0132c, Rv0133 and Rv0139).

**Additional file 7: ClustalW-Neighbor Joining analysis of the genes in MUL4822 cluster.** Boxed (blue) are the genes that grouped with MUL4822. Several of the MTC orthologs in this clade are essential for the growth of *M. tuberculosis* in macrophages.

**Additional file 8: ClustalW-Neighbor Joining analysis of the genes in Mjls5529 cluster.** Boxed (blue) are the genes that grouped with Mjls5529, whose homologs are essential in *M. tuberculosis*. Several of the MTC orthologs in this clade are essential for the growth of *M. tuberculosis* in macrophages.

**Additional file 9: The essential genes in mycobacterial rhomboid gene clusters (doc).** <sup>a</sup>: According to Sassetti et al [37] and Rengarajan et al [38]. <sup>1</sup>: Essential (for optimal growth). <sup>2</sup>: Required for growth in macrophage. <sup>3</sup>: Mutation slows growth.

## Abbreviations

BLAST: Basic Local Alignment Search Tool; GIB-DDBJ: Genome information Broker-DNA Data Bank of Japan; ESAT-6: Early Secreted Antigenic Target 6 kDa protein; iRhoms: inactive rhomboids; KEGG: Kyoto Encyclopedia of Genes and Genomes; LB: Luria Bertani; MAC: *Mycobacterium avium* Complex; MAP: *Mycobacterium avium* subspecies *Paratuberculosis*; MTC: *Mycobacterium tuberculosis* Complex; MUSCLE: Multiple Sequence Comparison by Log-Expectation; NTM: None-tuberculous mycobacteria; ORF: Open Reading Frame; PARG: Presenilin-associated rhomboid-like; PDIM: Phthiocerol Dimycocerosate; RT-PCR: Reverse Transcriptase Polymerase Chain Reaction; SNP: Single Nucleotide Polymorphism; TraSH: Transposon Site Hybridization; TMH: Transmembrane helix;

## Acknowledgements

This project was funded in part by the National Institutes of Health (Grants # R03 AI062849-01 and R01 AI075637-02 to MLJ); the Tuberculosis Research

Unit (TBRU), established with Federal funds from the United States National Institutes of Allergy and Infectious Diseases & the United States National Institutes of Health and Human Services, under Contract Nos. NO1-AI-95383 and HHSN266200700022C/NO1-AI-70022; and with training support to DPK from the Fogarty International Center through Clinical Operational & Health Services Research (COHRE) at the JCRC, Kampala, Uganda (award # U2RTW006879).

We thank Ms Geraldine Nalwadda (Dept of Medical Microbiology, MakCHS), Mr. Nelson Kakande and Ms Regina Namirembe (COHRE secretariat, JCRC, Kampala) for administrative assistance. Special thanks to the staff at the TB culture laboratory, JCRC, Kampala; Dr Charles Masembe, Faculty of Science, Makerere University, for helping with phylogenetics; Dr. Peter Sander, for providing *M. tuberculosis* and *M. bovis* BCG strains; and Dr Julius Okuni, Faculty of Veterinary Medicine, Makerere University, for providing *M. avium* subsp. *Paratuberculosis* strain.

## Author details

<sup>1</sup>Department of Medical Microbiology, School of Biomedical Sciences, Makerere University College of Health Sciences, Kampala, Uganda.

<sup>2</sup>Department of Veterinary Parasitology & Microbiology, Faculty of Veterinary Medicine, Makerere University, Kampala, Uganda. <sup>3</sup>Case Western Reserve University, Cleveland, OH, USA. <sup>4</sup>Department of Pathology, University of Arkansas for Medical Sciences, Little Rock, AR, USA.

## Authors' contributions

DPK and MLJ conceived and designed the study, supervised by MLJ. DPK performed the bioinformatics and wrote the manuscript in partial fulfillment for his PhD. MO purified mRNA and performed the RT-PCRs. The other authors read and critiqued the manuscript. All authors read and approved the final manuscript.

## Competing interests

The authors declare that they have no competing interests.

Received: 25 June 2010 Accepted: 29 October 2010

Published: 29 October 2010

## References

1. Euzéby JP: List of Prokaryotic names with Standing in Nomenclature. [http://www.bacterio.cict.fr/m/mycobacterium.html].
2. Cole ST, Brosch R, Parkhill J, Garnier T, Churcher C, Harris D, Gordon SV, Eiglmeier K, Gas S, Barry CE, et al: Deciphering the biology of *Mycobacterium tuberculosis* from the complete genome sequence. *Nature* 1998, **393**(6685):537-544.
3. Cole ST, Eiglmeier K, Parkhill J, James KD, Thomson NR, Wheeler PR, Honore N, Garnier T, Churcher C, Harris D, et al: Massive gene decay in the leprosy bacillus. *Nature* 2001, **409**(6823):1007-1011.
4. Demangel C, Stinear TP, Cole ST: Buruli ulcer: reductive evolution enhances pathogenicity of *Mycobacterium ulcerans*. *Nat Rev Microbiol* 2009, **7**(1):50-60.
5. Bannantine JP, Barletta RG, Stabel JR, Paustian ML, Kapur V: Application of the Genome Sequence to Address Concerns That *Mycobacterium avium* Subspecies *Paratuberculosis* Might Be a Foodborne Pathogen. *Foodborne Pathogens and Disease* 2004, **1**(1):3-15.
6. Rubin DS, Rahal JJ: *Mycobacterium-avium* complex. *Infect Dis Clin North Am* 1994, **8**(2):413-426.
7. Valentin-Weigand P, Goethe R: Pathogenesis of *Mycobacterium avium* subspecies *paratuberculosis* infections in ruminants: still more questions than answers. *Microbes Infect* 1999, **1**(13):1121-1127.
8. Ventura M, Canchaya C, Tauch A, Chandra G, Fitzgerald GF, Chater KF, van Sinderen D: Genomics of Actinobacteria: tracing the evolutionary history of an ancient phylum. *Microbiol Mol Biol Rev* 2007, **71**(3):495-548.
9. Khan AA, Kim SJ, Paine DD, Cerniglia CE: Classification of a polycyclic aromatic hydrocarbon-metabolizing bacterium, *Mycobacterium* sp. strain PYR-1, as *Mycobacterium vanbaalenii* sp. nov. *Int J Syst Evol Microbiol* 2002, **52**(Pt 6):1997-2002.
10. Brodin P, Rosenkrands I, Andersen P, Cole ST, Brosch R: ESAT-6 proteins: protective antigens and virulence factors? *Trends in microbiology* 2004, **12**(11):500-508.
11. Chen JM, Islam ST, Ren H, Liu J: Differential productions of lipid virulence factors among BCG vaccine strains and implications on BCG safety. *Vaccine* 2007, **25**(48):8114-8122.

12. Smith I: **Mycobacterium tuberculosis pathogenesis and molecular determinants of virulence.** *Clin Microbiol Rev* 2003, **16**(3):463-496.
13. McDevitt D, Rosenberg M: **Exploiting genomics to discover new antibiotics.** *Trends Microbiol* 2001, **9**(12):611-617.
14. Traag BA, Driks A, Stragier P, Bitter W, Broussard G, Hatfull G, Chu F, Adams KN, Ramakrishnan L, Losick R: **Do mycobacteria produce endospores?** *Proc Natl Acad Sci USA* **107**(2):878-881.
15. Bansal AK: **Bioinformatics in microbial biotechnology—a mini review.** *Microb Cell Fact* 2005, **4**(1):19.
16. Godreuil S, Tazi IL, Bañuls AL: **Pulmonary Tuberculosis and Mycobacterium Tuberculosis: Modern Molecular Epidemiology and Perspectives.** [http://media.wiley.com/product\_data/excerpt/28/04716573/0471657328.pdf].
17. Freeman M: **Rhomboid proteases and their biological functions.** *Annu Rev Genet* 2008, **42**:191-210.
18. Wasserman JD, Urban S, Freeman M: **A family of rhomboid-like genes: Drosophila rhomboid-1 and roughoid/rhomboid-3 cooperate to activate EGF receptor signaling.** *Genes Dev* 2000, **14**(13):1651-1663.
19. Koonin EV, Makarova KS, Rogozin IB, Davidovic L, Letellier MC, Pellegrini L: **The rhomboids: a nearly ubiquitous family of intramembrane serine proteases that probably evolved by multiple ancient horizontal gene transfers.** *Genome Biol* 2003, **4**(3):R19.
20. Urban S: **Rhomboid proteins: conserved membrane proteases with divergent biological functions.** *Genes Dev* 2006, **20**(22):3054-3068.
21. Baker RP, Wijetilaka R, Urban S: **Two Plasmodium rhomboid proteases preferentially cleave different adhesins implicated in all invasive stages of malaria.** *PLoS Pathog* 2006, **2**(10):e113.
22. Carruthers VB: **Proteolysis and Toxoplasma invasion.** *Int J Parasitol* 2006, **36**(5):595-600.
23. Dowse TJ, Pascall JC, Brown KD, Soldati D: **Apicomplexan rhomboids have a potential role in microneme protein cleavage during host cell invasion.** *Int J Parasitol* 2005, **35**(7):747-756.
24. Srinivasan P, Coppens I, Jacobs-Lorena M: **Distinct roles of Plasmodium rhomboid 1 in parasite development and malaria pathogenesis.** *PLoS Pathog* 2009, **5**(1):e1000262.
25. Brossier F, Jewett TJ, Sibley LD, Urban S: **A spatially localized rhomboid protease cleaves cell surface adhesins essential for invasion by Toxoplasma.** *Proc Natl Acad Sci USA* 2005, **102**(11):4146-4151.
26. Yan Z, Zou H, Tian F, Grandis JR, Mixson AJ, Lu PY, Li LY: **Human rhomboid family-1 gene silencing causes apoptosis or autophagy to epithelial cancer cells and inhibits xenograft tumor growth.** *Mol Cancer Ther* 2008, **7**(6):1355-1364.
27. Zou H, Thomas SM, Yan ZW, Grandis JR, Vogt A, Li LY: **Human rhomboid family-1 gene RHBDF1 participates in GPCR-mediated transactivation of EGFR growth signals in head and neck squamous cancer cells.** *FASEB J* 2009, **23**(2):425-432.
28. Waters CM, Bassler BL: **Quorum sensing: cell-to-cell communication in bacteria.** *Annu Rev Cell Dev Biol* 2005, **21**:319-346.
29. Federle MJ, Bassler BL: **Interspecies communication in bacteria.** *J Clin Invest* 2003, **112**(9):1291-1299.
30. Rather PN, Orosz E: **Characterization of aarA, a pleiotropic negative regulator of the 2'-N-acetyltransferase in Providencia stuartii.** *J Bacteriol* 1994, **176**(16):5140-5144.
31. Mesak LR, Mesak FM, Dahl MK: **Expression of a novel gene, gluP, is essential for normal Bacillus subtilis cell division and contributes to glucose export.** *BMC Microbiol* 2004, **4**:13.
32. Clemmer KM, Sturgill GM, Veenstra A, Rather PN: **Functional characterization of Escherichia coli GlpG and additional rhomboid proteins using an aarA mutant of Providencia stuartii.** *J Bacteriol* 2006, **188**(9):3415-3419.
33. Wu Z, Yan N, Feng L, Oberstein A, Yan H, Baker RP, Gu L, Jeffrey PD, Urban S, Shi Y: **Structural analysis of a rhomboid family intramembrane protease reveals a gating mechanism for substrate entry.** *Nat Struct Mol Biol* 2006, **13**(12):1084-1091.
34. Lieberman RL, Wolfe MS: **Membrane-embedded protease poses for photoshoot.** *Proc Natl Acad Sci USA* 2007, **104**(2):401-402.
35. Lemberg MK, Freeman M: **Functional and evolutionary implications of enhanced genomic analysis of rhomboid intramembrane proteases.** *Genome Res* 2007, **17**(11):1634-1646.
36. Sasseti CM, Boyd DH, Rubin EJ: **Comprehensive identification of conditionally essential genes in mycobacteria.** *Proc Natl Acad Sci USA* 2001, **98**(22):12712-12717.
37. Sasseti CM, Boyd DH, Rubin EJ: **Genes required for mycobacterial growth defined by high density mutagenesis.** *Mol Microbiol* 2003, **48**(1):77-84.
38. Rengarajan J, Bloom BR, Rubin EJ: **Genome-wide requirements for Mycobacterium tuberculosis adaptation and survival in macrophages.** *Proc Natl Acad Sci USA* 2005, **102**(23):8327-8332.
39. McEvoy CR, van Helden PD, Warren RM, Gey van Pittius NC: **Evidence for a rapid rate of molecular evolution at the hypervariable and immunogenic Mycobacterium tuberculosis PPE38 gene region.** *BMC Evol Biol* 2009, **9**:237.
40. Yip MJ, Porter JL, Fyfe JA, Lavender CJ, Portaels F, Rhodes M, Kator H, Colorni A, Jenkin GA, Stinear T: **Evolution of Mycobacterium ulcerans and other mycolactone-producing mycobacteria from a common Mycobacterium marinum progenitor.** *J Bacteriol* 2007, **189**(5):2021-2029.
41. Balakirev ES, Ayala FJ: **Pseudogenes: are they "junk" or functional DNA?** *Annu Rev Genet* 2003, **37**:123-151.
42. Piehler AP, Hellum M, Wenzel JJ, Kaminski E, Haug KB, Kierulf P, Kaminski WE: **The human ABC transporter pseudogene family: Evidence for transcription and gene-pseudogene interference.** *BMC Genomics* 2008, **9**:165.
43. Piehler AP, Wenzel JJ, Olstad OK, Haug KB, Kierulf P, Kaminski WE: **The human ortholog of the rodent testis-specific ABC transporter Abca17 is a ubiquitously expressed pseudogene (ABCA17P) and shares a common 5' end with ABCA3.** *BMC Mol Biol* 2006, **7**:28.
44. Stinear TP, Seemann T, Pidot S, Frigui W, Reysset G, Garnier T, Meurice G, Simon D, Bouchier C, Ma L, et al: **Reductive evolution and niche adaptation inferred from the genome of Mycobacterium ulcerans, the causative agent of Buruli ulcer.** *Genome Res* 2007, **17**(2):192-200.
45. Stinear TP, Seemann T, Harrison PF, Jenkin GA, Davies JK, Johnson PD, Abdellah Z, Arrowsmith C, Chillingworth T, Churcher C, et al: **Insights from the complete genome sequence of Mycobacterium marinum on the evolution of Mycobacterium tuberculosis.** *Genome Res* 2008, **18**(5):729-741.
46. Stinear TP, Jenkin GA, Johnson PD, Davies JK: **Comparative genetic analysis of Mycobacterium ulcerans and Mycobacterium marinum reveals evidence of recent divergence.** *J Bacteriol* 2000, **182**(22):6322-6330.
47. Koonin EV: **Orthologs, paralogs, and evolutionary genomics.** *Annu Rev Genet* 2005, **39**:309-338.
48. Joshi T, Xu D: **Quantitative assessment of relationship between sequence similarity and function similarity.** *BMC Genomics* 2007, **8**:222.
49. Dowse TJ, Soldati D: **Rhomboid-like proteins in Apicomplexa: phylogeny and nomenclature.** *Trends Parasitol* 2005, **21**(6):254-258.
50. Gaur RK, Natekar GA: **Prokaryotic and eukaryotic integral membrane proteins have similar architecture.** *Mol Biol Rep* **37**(3):1247-1251.
51. KEGG: **Kyoto Encyclopedia of Genes and Genomes.** [http://www.genome.jp/kegg/].
52. Gallio M, Sturgill G, Rather P, Kylsten P: **A conserved mechanism for extracellular signaling in eukaryotes and prokaryotes.** *Proc Natl Acad Sci USA* 2002, **99**(19):12208-12213.
53. Hughes DT, Sperandio V: **Inter-kingdom signalling: communication between bacteria and their hosts.** *Nat Rev Microbiol* 2008, **6**(2):111-120.
54. Lowery CA, Dickerson TJ, Janda KD: **Interspecies and interkingdom communication mediated by bacterial quorum sensing.** *Chem Soc Rev* 2008, **37**(7):1337-1346.
55. Ryan RP, Dow JM: **Diffusible signals and interspecies communication in bacteria.** *Microbiology* 2008, **154**(Pt 7):1845-1858.
56. Overbeek R, Fonstein M, D'Souza M, Pusch GD, Maltsev N: **The use of gene clusters to infer functional coupling.** *Proc Natl Acad Sci USA* 1999, **96**(6):2896-2901.
57. Portaels F, Meyers WM, Ablordey A, Castro AG, Chemlal K, de Rijk P, Elsen P, Fissette K, Fraga AG, Lee R, et al: **First cultivation and characterization of Mycobacterium ulcerans from the environment.** *PLoS Negl Trop Dis* 2008, **2**(3):e178.
58. Narayan A, Sachdeva P, Sharma K, Saini AK, Tyagi AK, Singh Y: **Serine threonine protein kinases of mycobacterial genus: phylogeny to function.** *Physiol Genomics* 2007, **29**(1):66-75.
59. Sengupta S, Ghosh S, Nagaraja V: **Moonlighting function of glutamate racemase from Mycobacterium tuberculosis: racemization and DNA gyrase inhibition are two independent activities of the enzyme.** *Microbiology* 2008, **154**(Pt 9):2796-2803.
60. Asiimwe BB, Asiimwe J, Kallenius G, Ashaba FK, Ghebremichael S, Joloba M, Koivula T: **Molecular characterisation of Mycobacterium bovis isolates**

from cattle carcasses at a city slaughterhouse in Uganda. *Vet Rec* 2009, **164**(21):655-658.

61. Asimwe BB, Koivula T, Ilenius G, Huard RC, Ghebremichael S, Asimwe J, Joloba ML: **Mycobacterium tuberculosis Uganda genotype is the predominant cause of TB in Kampala, Uganda.** *The International Journal of Tuberculosis and Lung Disease* 2008, **12**:386-391.
62. NCBI: **National Center for Biotechnological Information.** [<http://www.ncbi.nlm.nih.gov/>].
63. **TubercuList-GenoList.** [<http://genolist.pasteur.fr/TubercuList/>].
64. GIB: **Genome Information Broker.** [<http://gib.genes.nig.ac.jp/>].
65. JCVI: **J Craig Venter Institute.** [<http://cmr.jcvi.org/cgi-bin/CMR/CmrHomePage.cgi>].
66. **Specialized BLAST: Align two or more sequences.** [<http://blast.ncbi.nlm.nih.gov/Blast.cgi>].
67. **ClustalW.** [<http://www.ebi.ac.uk/clustalw/>].
68. **MUSCLE: Multiple Sequence Comparison by Log-Expectation.** [<http://www.ebi.ac.uk/Tools/muscle/index.html>].
69. **ExPASy Proteomics Server.** [<http://www.cbs.dtu.dk/services/TMHMM-2.0/>].
70. **TMRPres2D Tool.** [<http://bioinformatics.biol.uoa.gr/TMRPres2D/>].
71. **ExPASy Tools.** [<http://www.cbs.dtu.dk/services/TargetP/>].
72. **MEGA 4: Molecular Evolutionary Genetics Analysis.** [<http://www.megasoftware.net/>].

doi:10.1186/1471-2180-10-272

**Cite this article as:** Kateete *et al.*: Rhomboid homologs in mycobacteria: insights from phylogeny and genomic analysis. *BMC Microbiology* 2010 **10**:272.

**Submit your next manuscript to BioMed Central  
and take full advantage of:**

- Convenient online submission
- Thorough peer review
- No space constraints or color figure charges
- Immediate publication on acceptance
- Inclusion in PubMed, CAS, Scopus and Google Scholar
- Research which is freely available for redistribution

Submit your manuscript at  
[www.biomedcentral.com/submit](http://www.biomedcentral.com/submit)

