

# The association of glutathione S-transferase *GSTT1* and *GSTM1* gene polymorphism with pseudoexfoliative glaucoma in a Pakistani population

Muhammad Imran Khan,<sup>1</sup> Shazia Micheal,<sup>1</sup> Farah Akhtar,<sup>2</sup> Waqar Ahmed,<sup>1</sup> Bushra Ijaz,<sup>1</sup> Asifa Ahmed,<sup>1</sup> Raheel Qamar<sup>1,3</sup>

<sup>1</sup>Department of Biosciences, COMSATS Institute of Information Technology, Islamabad, Pakistan; <sup>2</sup>Al-Shifa Trust Eye Hospital, Rawalpindi, Pakistan; <sup>3</sup>Shifa College of Medicine, Islamabad, Pakistan

**Purpose:** The aim of the present study was to investigate the association of glutathione S-transferase *GSTT1* and *GSTM1* genotypes with pseudoexfoliative glaucoma (PEXG) in a group of Pakistani patients.

**Methods:** Multiplex polymerase chain reaction was used to study the *GSTT1* and *GSTM1* polymorphisms in 165 PEXG patients and 162 unaffected controls.

**Results:** In the current study we describe a significant gender-specific association of *GSTT1* and *GSTM1* null genotypes with PEXG. The three null genotype combinations (i.e., T1M0, T0M1, and T0M0) were found at significantly higher frequencies in the PEXG patients as compared to the controls ( $\chi^2=21.82$ ,  $p<0.001$ ). This association was specifically related to the female patients ( $\chi^2=35.63$ ,  $p<0.001$ ); no such association was seen in the male patients ( $\chi^2=2.28$ ,  $p>0.05$ ).

**Conclusions:** The results suggest that there is a significant involvement of the *GSTT1* and *GSTM1* polymorphisms in female Pakistani patients having PEXG, which suggests a possible gender-specific impairment of detoxification in this group.

Xenobiotic compounds of exogenous and endogenous origin are a substantial threat to the human cells as they lead to the production of highly reactive oxygen species (ROS). The cells produce numerous antioxidants that counter the effects of these compounds by reducing their accumulation. Glutathione (GSH) is an important antioxidant that protects against cellular damage caused by environmental toxins as well as from ROS-mediated injury. GSH works by neutralizing ROS and xenobiotics with the help of glutathione S-transferase (GST); this enzyme catalyzes the conjugation of these compounds with GSH, which being water soluble can thus be easily eliminated from the body [1-3].

Mammalian GSTs are made up of a supergene family of catalytic and binding proteins located on at least seven different genes, which are divided into three major classes: cytosolic, mitochondrial and microsomal GSTs. Tissue expression studies have shown that most of the cytosolic GSTs are expressed in the kidneys and the liver, where they play an important role in the detoxification of various endogenous and exogenous toxic chemicals in the body [4-6].

Of the cytosolic GSTs, the Mu ( $\mu$ ), Theta ( $\sigma$ ), and Pi ( $\pi$ ) genes have been found at different frequencies in various ethnic groups. In the Mu class of GSTs the M1 null genotype (M0) is common in the Chinese, Japanese, French, and

English, with a frequency between 43% and 58% [7-11]. In the Theta class of GSTs the T1 null genotype (T0) has been found at varying frequencies in different ethnic groups: 64.4% in Chinese, 60.2% in Koreans, and 20%–24% in African-Americans [12]. Biochemical studies have associated these allelic variations to intra-individual differences in the ability to metabolize environmental and cellular toxins [13].

It has been shown that individuals carrying the null genotypes of GST may have higher levels of intermediates of oxidative metabolism because the detoxification pathways have been disrupted, and this then directly or indirectly exacerbates the pathological effects of ROS.

This has important implications in a range of diseases; for example, various types of cancers, asthma and others, and has also demonstrated involvement in causing neuronal cell death in neurodegenerative diseases, such as Alzheimer, motor neuron disease and Parkinson [14-17]. GSTs have also been reported to be widely expressed in different ocular tissues. Thus, for individuals carrying the null genotypes, the body's defense against oxidative damage may be impaired, contributing to manifestation of the ocular diseases in question [18-23].

Polymorphisms of GST have previously been shown to be associated with glaucoma, cataract, exudative age-related macular degeneration as well as various spontaneous optic neuropathies [13,24-27].

Several studies have been conducted in different populations to determine the association of *GSTT1* and

Correspondence to: Raheel Qamar, Dean, Faculty of Science, COMSATS Institute of Information Technology, Park Road, Islamabad-45600, Pakistan; Phone: +92-51-9235033; FAX: +92-51-8318499; email:raheelqamar@hotmail.com

*GSTM1* polymorphisms with primary open-angle glaucoma [13,26,28], but to date only three studies have been reported on pseudo-exfoliative glaucoma (PEXG) in populations of Arabs, Turks and Swedes [29-31]. There was no significant association found between PEXG and the null genotypes of *GSTT1* and *GSTM1* in the Turks and Swedes, whereas in the Arab glaucoma patients (n=107), in a study that included POAG, PCAG and PEXG, a significant association of all the deletion genotypes was observed [29]. However, after stratification of patients by glaucoma type the T0M0 genotype was not found to be significantly associated with any type of glaucoma.

The aim of the present study was to determine if there was a significant association of the *GSTT1* and *GSTM1* polymorphisms with PEXG in a Pakistani cohort. The study was approved by the Departmental Ethics Committee of COMSATS Institute of Information Technology, Islamabad and the relevant Hospitals' Ethics Committee and conformed to the principles of the Declaration of Helsinki. Informed written consent was taken from all patients and unaffected control individuals before sampling. PEXG patients were recruited from the out-patients Department of the Al-Shifa Trust Eye Hospital, Rawalpindi and Christian Eye Hospital, Taxila.

## METHODS

*Criteria for patient selection, sample collection and DNA extraction:* Complete ophthalmic examinations were performed on the PEXG patients, including measurement of cup-to-disk ratio, tonometric assessment of intra-ocular pressure and slit lamp biomicroscopy was performed to detect any presence of exfoliative material along the papillary border and on the iris. Following this, the pupils of the patients were dilated and the anterior of the lens surface was examined for any deposits of white material. Angles were measured in all the patients with the help of gonioscopy. All of the healthy control individuals were also examined and they were found to have normal visual fields, no exfoliation material in the eye or any other evidence of glaucoma. Blood samples from all the patients and controls were collected by venipuncture; genomic DNA was extracted by a conventional phenol chloroform method, as described previously [32].

*Genotype analysis of *GSTT1* and *GSTM1* polymorphisms:* To determine the *GSTT1* and *GSTM1* genotypes of the subjects, multiplex polymerase chain reaction (PCR) amplification was performed using the following primers: *GSTT1* forward primer 5'-TTC CTT ACT GGT CCT CAC ATC TC-3'; *GSTT1* reverse primer 5'-TCA CCG GAT CAT GGC CAG CA-3'; *GSTM1* forward primer 5'-GAA CTC CCT GAA AAG CTA AAG C-3'; and *GSTM1* reverse primer 5'-GTT GGG CTC AAA TAT ACG GTG G-3'. Beta globin gene sequence amplification was used as an internal control in the PCR reactions, for which the primers were: forward primer 5'-CAA CTT CAT CCA CGT TCA CC-3'; reverse primer 5'-

GAA GAG CCA AGG ACA GGT AC-3'. Each 25  $\mu$ l PCR reaction contained 1 $\times$  Taq Buffer (10 mM Tris-HCl, pH 9.0, 50 mM KCl, 0.1% Triton X-100, 0.01% gelatine; Fermentas, Burlington, Ontario), 30 pmol of each primer, 1.5 mM MgCl<sub>2</sub>, 0.3 mM dNTP, 1.5 U of Taq DNA polymerase (Fermentas) and 100 ng of genomic DNA.

Amplification was performed with initial denaturation at 95 °C for 5 min, followed by 30 cycles at 95 °C for 1 min, 65 °C for 1 min and 72 °C for 1 min, with a final extension at 72 °C for 7 min. PCR products were electrophoretically separated on 2% agarose gels and the bands were visualized by UV transillumination. For the T1M1 genotype three bands were obtained: a 459 bp band of *GSTT1*, a 209 bp band of *GSTM1* and a 268 bp band of the internal control ( $\beta$ -globin gene; Figure 1). The T1M0 genotype produced two bands of 459 bp and 268 bp; the T0M1 genotype produced two bands of 209 bp and 268 bp. In the case of the T0M0 null genotype only, the  $\beta$ -globin gene internal control band (268 bp) was observed. To confirm the null results, confirmatory PCR tests were performed separately for the *GSTT1* as well as the *GSTM1* genotypes, using  $\beta$ -globin gene amplification as the internal control, under identical conditions as those described above, but using only the *GSTT1* and  $\beta$ -globin or the *GSTM1* and  $\beta$ -globin primers, respectively.

*Statistical analysis:* Statistical analysis of the genotype frequencies of both the PEXG patients and controls was performed using the chi-square test ( $\chi^2$ ). To prevent any false positive inference, Bonferroni correction ( $p'_b$ ) was applied to the genotype data. Correction involved multiplying the p value obtained after each single test with the total number of independent tests (k) performed during the study [33,34]. The Sidak correction ( $p'_s$ ), an approximation of Bonferroni, was also applied to correct the p value as some Bonferroni corrected values were >1 [35,36]. Note that for the Bonferroni corrected values, the level of significance remained 0.05; i.e., the association of any genotype group/variable with  $k \times p < 0.05$  was considered as statistically significant [33]. The formulae for the calculation of the Bonferroni and Sidak values are as follows:

$$p'_b = k \times p$$

$$p'_s = 1 - (1 - p)^k$$

where k is the number of genotype groups tested and p is the raw value obtained from the  $\chi^2$  test.

All analyses were performed using SPSS v.16 statistical analysis software (SPSS Inc., Chicago, IL) and StatCalc EpiInfo package v.6 (Atlanta, GA).

## RESULTS

The case-controlled study included 165 patients with glaucoma (53% males, mean age 45.8 $\pm$ 10.1 years and 47%

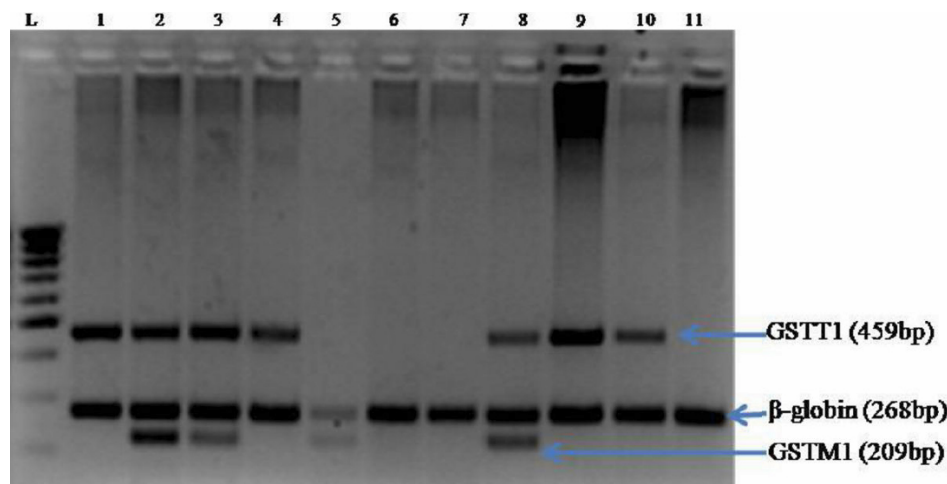


Figure 1. Multiplex PCR amplification product of the *GSTT1*, *GSTM1* and internal control  $\beta$ -globin genes. The amplified products were separated by electrophoresis on 2% agarose gel. Lane L, 100bp DNA ladder; lane 1, 4, 9, and 10, T1/M0 genotype (459 bp and 268 bp fragments); lane 2, 3, and 8, T1/M1 genotype (459 bp, 268 bp, and 209 bp fragments); lane 5, T0/M1 genotype (268 bp and 209 bp fragments); lane 6, 7, and 11, T0/M0 genotype (268 bp fragments).

females, mean age  $46.31 \pm 11.6$  years), as well as 162 unaffected controls (52% males, mean age  $43.8 \pm 13.9$  years and 48% females, mean age  $43.1 \pm 10.9$  years); there was no statistically significant difference ( $p > 0.05$ ) in the mean age of male/female patients and controls.

There was a significant difference in the overall distribution of the *GSTT1* and *GSTM1* genotypes in the PEXG patients and controls ( $\chi^2 = 21.82$ ,  $p < 0.001$ ; Table 1). The difference between individual genotypes remained significant even after the application of Bonferroni and Sidak corrections ( $p'_b$  &  $p'_s < 0.05$ ). When the subjects were stratified according to gender the overall genotype distribution of the female patients was found to be significantly associated with the disease ( $\chi^2 = 35.63$ ,  $p < 0.001$ ; Table 1); this remained significant even after applying the Bonferroni correction ( $p'_b$  &  $p'_s < 0.001$ ). Interestingly, the T0M0 null genotype was exclusively present in the PEXG female patients ( $\chi^2 = 20.12$ ,  $p$ ,  $p'_b$  &  $p'_s < 0.001$ ). In the male patients 8.2% of the controls had the T0M0 null genotype as compared to 6% of the PEXG male patients ( $\chi^2 = 0.11$ ,  $p$ ,  $p'_b$  &  $p'_s > 0.05$ , OR=0.81 [95% CI=0.20–3.24]; Table 1).

The gender distribution of the null genotypes GSTT0 and GSTM0 were also compared between patients and controls; these genotypes were found at a significantly higher frequency in the female patients than in the female controls ( $\chi^2 = 19.90$ , and  $\chi^2 = 18.7$ , respectively,  $p < 0.05$ ; Table 2); whereas in males the frequency of the null genotypes did not differ significantly between the groups ( $\chi^2 = 0.43$ ,  $\chi^2 = 0.01$ , respectively,  $p > 0.05$ ). However, the male control samples as compared to the female controls had a significantly higher frequency of both the null genotypes GSTT0 and GSTM0 ( $\chi^2 = 12.13$ ,  $\chi^2 = 14.41$ , respectively,  $p < 0.001$ ; Table 3), whereas in patients in both these groups these genotypes were not statistically different from each other ( $\chi^2 = 0.44$ ,  $\chi^2 = 0.53$ , respectively,  $p > 0.05$ ).

## DISCUSSION

Oxidative stress along with cellular senescence is one of the major factors affecting cellular processes. The inability of the cells to cope with oxidative stress is due to a breakdown of the body's antioxidant defenses due to excessive production of ROS; this in turn leads to damage to the cellular macromolecules, including DNA, proteins and lipids. To counteract the stress-induced damage, the cells upregulate antioxidant enzymes, such as GST [37].

In the eye a system of trabecular meshwork (TM) regulates the outflow of aqueous humor, and maintains normal intraocular pressure (IOP); therefore, any challenge to the structural and functional integrity of TM results in the development of glaucoma. Several lines of evidence suggest that one effect of the generation of oxidative free radicals in the glaucomatous eye is the progressive loss of TM [38]. In an experimental rat model of glaucoma the retinal ganglion cells (RGC) and glial cells showed extensive protein and lipid oxidation, which appears to lead to apoptosis of these and other neuronal cells [37,39]. Thus, to maintain the homeostatic balance between the production of ROS and their clearance, the eye, under stress, is required to produce higher levels of antioxidants. Indeed, the glaucomatous eye upregulates several stress-related genes, including GST, which are involved in the detoxification of ROS and other related compounds [39,40].

Although, under stress, GST and other antioxidants are demonstrably upregulated, the glaucomatous eye fails to prevent oxidative damage, a fact that points to an underlying molecular or genetic defect. One such genetic risk factor is the presence of the GST null genotype in patients having oxidative, stress-related diseases.

A potent antioxidant 8-hydroxy-2'-deoxyguanosine (8-OH-dG) has been shown to be present at 3.6 fold higher levels in the TM of POAG patients, as compared to controls [41]. In these patients there was a positive correlation between

TABLE 1. OVERALL AND GENDER SEGREGATED DATA OF *GST* GENOTYPES IN UNAFFECTED CONTROLS AND PEXG PATIENTS.

Group	Genotype	Controls	Patients	p ( $\chi^2$ )	p <sub>b</sub>	p <sub>s</sub>	OR (95% CI)
Total	Genotype	95 (59%)	57 (34.5%)	<0.001 (21.82)			
	T1M1	51 (31%)	69 (41%)	Reference	<0.05	<0.05	2.25 (1.34-3.79)
	T1M0	9 (6%)	23 (14%)	<0.001 (12.71)	<0.001	<0.001	4.26 (1.73-10.74)
	T0M0	7 (4%)	16 (9.5%)	<0.05 (8.45)	<0.05	<0.05	3.81 (1.37-10.96)
	Total	162	165				
Females	Genotype	Controls	Patients	p ( $\chi^2$ )	p <sub>b</sub>	p <sub>s</sub>	OR (95% CI)
	T1M1	60 (80.5%)	26 (33.8%)	<0.001 (35.63)			
	T1M0	16 (20.8%)	31 (40.2%)	Reference	<0.001	<0.001	4.47 (1.96-10.29)
	T0M1	1 (1.2%)	9 (11.7%)	<0.001 (13.81)	<0.001	<0.001	20.77 (2.45-460.38)
	T0M0	0 (0%)	11 (14.3%)	<0.001 (20.12)	<0.001	<0.001	N/A
Total	77	77					
Males	Genotype	Controls	Patients	p ( $\chi^2$ )	p <sub>b</sub>	p <sub>s</sub>	OR (95% CI)
	T1M1	35 (41.2%)	31 (35%)	>0.05 (2.28)			
	T1M0	35 (41.2%)	38 (43%)	Reference	>0.05	>0.05	1.23 (0.60-2.52)
	T0M1	8(9.4)	14 (16%)	>0.05 (1.83)	>0.05	>0.05	1.98 (0.66-6.01)
	T0M0	7 (8.2%)	5 (6%)	>0.05 (0.11)	>0.05	>0.05	0.81 (0.20-3.24)
Total	85	88					

pb indicates Bonferroni corrected value and ps indicates Sidak corrected value. A p<0.05 was considered to be statistically significant.

**TABLE 2. COMPARISON OF *GSTT1* AND *GSTM1* NULL GENOTYPES ACCORDING TO GENDER DISTRIBUTION IN PATIENTS AND CONTROLS. A  $p < 0.05$  WAS CONSIDERED STATISTICALLY SIGNIFICANT.**

Genotype	Group	Controls (n=162)	Patients (n=165)	p ( $\chi^2$ )
T0	Total	16 (10%)	39 (24%)	<0.05 (11.06)
T1	Total	146 (90%)	126 (76%)	<0.05 (8.20)
M0	Total	58 (36%)	85 (52%)	<0.05 (8.20)
M1	Total	104 (64%)	80 (48%)	<0.05 (8.20)
Genotype		Controls (n=77)	Patients (n=77)	p ( $\chi^2$ )
T0	Females	1 (1%)	20 (26%)	<0.05 (19.90)
T1	Females	76 (99%)	57 (74%)	<0.05 (18.70)
M0	Females	16(21%)	42(55%)	<0.05 (18.70)
M1	Females	61(79%)	35(45%)	<0.05 (18.70)
Genotype		Controls (n=85)	Patients (n=88)	p ( $\chi^2$ )
T0	Males	15(18%)	19(22%)	>0.05(0.43)
T1	Males	70(82%)	69(78%)	>0.05(0.43)
M0	Males	42(49%)	43(49%)	>0.05(0.01)
M1	Males	43(51%)	45(51%)	>0.05(0.01)

**TABLE 3. COMPARISON OF *GSTT1* AND *GSTM1* NULL GENOTYPES BETWEEN MALE AND FEMALE CONTROLS AND PATIENTS. A  $p < 0.05$  WAS CONSIDERED STATISTICALLY SIGNIFICANT.**

Genotypes	Controls		p ( $\chi^2$ )	Patients		p ( $\chi^2$ )
	(Males) (n=85)	(Females) (n=77)		(Males) (n=88)	(Females) (n=77)	
<i>GSTT1</i> null	15 (18%)	1 (1%)	<0.001 (12.13)	19 (22%)	20 (26%)	>0.05 (0.44)
<i>GSTM1</i> null	42 (49%)	16 (21%)	<0.001 (14.41)	43 (49%)	42 (55%)	>0.05 (0.53)

oxidative DNA damage and intraocular pressure as well as visual field defects. The *GSTT1* null genotype was found to be more common in POAG cases, who also showed 2.2 fold higher levels of 8-OH-dG as compared to the other genotypes [41,42], resulting in oxidative DNA damage in the TM of these patients. A higher level of oxidative damage to the trabecular meshwork has also been seen in POAG patients with the *GSTM1* null genotype, indicating the possible involvement of these genotypes in the manifestation of disease [42].

In primary cultures of human optic nerve head astrocytes from glaucomatous eyes it has been observed that the basal levels of GSH antioxidants were well below those of primary cultures from normal astrocytes; these data combined with all the other evidence indicates that oxidative stress plays a significant role in the manifestation and progression of glaucoma [40].

Recently, using cDNA arrays, the involvement of several stress-related candidate genes was studied in PEXG. The authors found that a large set of cytoprotective gene products, including antioxidant defense enzymes (e.g., GST) and stress-inducible transcription factors, were consistently down-regulated in PEXG at both the mRNA and protein levels; this finding supports the conjecture that GSTs play an important role in protecting the eye against the development of PEXG [41].

The present study was based on the hypothesis that inadequate expression of GST in PEXG correlates with the

null genotypes. This hypothesis has been tested in Swedes [31] and Turks [28], but in those populations no significant contribution of the polymorphic variants of GSTs with PEXG was found. To the best of our knowledge, the investigators in all of those studies did not stratify their data according to gender. This may be significant considering our knowledge that in mice there is a higher expression of some types of GSTs in females as compared to males [6]. This indicates that any defects in the relevant genetic pathways in females could exacerbate the risk of disease to a significantly higher level than for males.

The importance of the present study is that an association between PEXG and all the GST null genotype combinations was observed and this remained significant even after Bonferroni correction. In addition, after stratifying the data according to gender, a clear association of the null genotypes with only the female PEXG patients was found; this occurred because a large number of female PEXG patients were found to carry the null genotypes, in different combinations, as compared to the female controls (Table 1).

The *GSTT1* and *GSTM1* null genotypes in the total data set of the patient cohort was also compared, as well as in the data stratified according to gender. Although an overall statistically significant difference in the null genotype distribution between patients and controls was observed, this was due to the significantly higher distribution of the null genotypes in the female patients, as compared to female controls (Table 2). In addition it must be pointed out that the

significantly higher frequency of the T1 and M1 in the female unaffected controls as compared to the males (Table 3) could be a result of a gender-specific protective effect of these genotypes in the females only.

The association of the *GSTM1* null genotype with female PEXG patients in the current study is in accordance with the data of a group of Greek patients with multiple sclerosis [42]; using this data we calculated and compared the gender-wise distribution of the null genotypes of *GSTT1* and *GSTM1* between the Greek controls and patients. We found that the female patients had a significantly higher frequency of the *GSTM1* null genotype (65.5% versus 41.7% in controls;  $\chi^2=4.91$ ,  $p=0.02$ ) while in males there was no difference in the distribution of any of the null genotypes.

Another interesting aspect of the present study is that, in addition to the *GSTM1* null genotype, the frequency of the *GSTT1* null genotype in the female PEXG patients occurred also at a significantly higher level than in the control females (Table 2), while in the Greeks there was no significant difference in this group ( $\chi^2=0.05$ ,  $p=0.82$ ). Also, in contrast to our data, in the Greeks the T0M0 combined null genotype was not found to be associated with the females, which points to the possible association of the GST T0M0 genotype with PEXG only in the Pakistani female patients; the resultant vulnerability to cellular and oxidative stress conditions may therefore be a contributing factor in the disease pathology that possibly has ethnic as well as gender associations.

In conclusion, we would like to emphasize the importance of conducting further studies in different populations to further ascertain the association of GST with PEXG; this will allow the development of a consensus regarding the involvement of GST in glaucoma. There is also a need to better understand the mechanisms associated with the null genotypes in female patients.

#### ACKNOWLEDGMENTS

We thank all the subjects in this study for donating blood samples. This work was supported by grant no. PSF/RES/C-COMSATS/MED(280) awarded to R.Q. by the Pakistan Science Foundation and a core grant from the Shifa College of Medicine.

#### REFERENCES

- Mannervik B, Danielson UH. Glutathione transferase structure and catalytic activity. *CRC Crit Rev Biochem* 1988; 23:283-337. [PMID: 3069329]
- Bekris LM, Shephard C, Peterson M, Hoehna J, Van Yserloo B, Rutledge E, Farin F, Kavanagh TJ, Lernmark A. Glutathione-s-transferase M1 and T1 polymorphisms and associations with type 1 diabetes age-at-onset. *Autoimmunity* 2005; 38:567-75. [PMID: 16390810]
- Baltmr A, Duggan J, Nizari S, Salt TE, Cordeiro MF. Neuroprotection in glaucoma-Is there a future role? *Exp Eye Res.* 2010.
- Hayes JD, Flanagan JU, Jowsey IR. Glutathione transferases. *Annu Rev Pharmacol Toxicol* 2005; 45:51-88. [PMID: 15822171]
- Strange RC, Spiteri MA, Ramachandran S, Fryer AA. Glutathione-S-transferase family of enzymes. *Mutat Res* 2001; 482:21-6. [PMID: 11535245]
- Knight TR, Choudhuri S, Klaassen CD. Constitutive mRNA expression of various glutathione S-transferase isoforms in different tissues of mice. *Toxicol Sci* 2007; 100:513-24. [PMID: 17890767]
- Board P, Coggan M, Johnston P, Ross V, Suzuki T, Webb G. Genetic heterogeneity of the human glutathione transferases: a complex of gene families. *Pharmacol Ther* 1990; 48:357-69. [PMID: 2084706]
- Harada S, Abei M, Tanaka N, Agatwal DP, Goedde HW. Liver glutathione S-transferase polymorphism in Japanese and its pharmacogenetic importance. *Hum Genet* 1987; 75:322-5. [PMID: 3570286]
- Laisney V, Nguyen Van Cong, Gross MS, Frezal J. Human genes for glutathione S-transferases. *Hum Genet* 1984; 68:221-7. [PMID: 6500576]
- Heagerty AHM, Fitzgerald D, Smith A, Bowers B, Jones P, Fryer A, Zhao L, Alldersea J, Strange R. Glutathione S-transferase GSTM1 phenotypes and protection against cutaneous tumours. *Lancet* 1994; 343:266-8. [PMID: 7905099]
- Bhattacharyya SP, Saha N, Wee KP. Glutathione-S-transferase (GST) polymorphism among ethnic groups in Singapore with report of additional alleles at loci 1 and 2. *Gene Geogr* 1989; 3:21-6. [PMID: 2487053]
- Nelson HH, Wiencke JK, Christiani DC, Cheng TJ, Zuo ZF, Schwartz BS, Lee BK, Spitz MR, Wang M, Xu X, Kelsey KT. Ethnic differences in the prevalence of the homozygous deleted genotype of glutathione S-transferase theta. *Carcinogenesis* 1995; 16:1243-5. [PMID: 7767992]
- Saadat M, Jahromi MF. Occupational sunlight exposure, polymorphism of glutathione S-transferase M1, and senile cataract risk. *Occup Environ Med* 2006; 63:503-4. [PMID: 16551760]
- Rebbeck TR. Molecular epidemiology of the human glutathione S-transferase genotypes GSTM1 and GSTT1 in cancer susceptibility. *Cancer Epidemiol Biomarkers Prev* 1997; 6:733-43. [PMID: 9298582]
- Tamer L, Calikoglu M, Ates NA, Yildirim H, Ercan B, Saritas E, Unlu A, Atik U. Glutathione S-transferase gene polymorphisms (GSTT1, GSTM1, GSTP1) as increased risk factors for asthma. *Respirology* 2004; 9:493-8. [PMID: 15612961]
- Bernardini S, Bellincampi L, Ballerini S, Federici G, Iori R, Trequattrini A, Ciappi F, Baldinetti F, Bossu P, Caltagirone C, Spalletta G. Glutathione S-transferase P1 \*C allelic variant increases susceptibility for late-onset Alzheimer disease: association study and relationship with apolipoprotein E epsilon 4 allele. *Clin Chem* 2005; 51:944-51. [PMID: 15805147]
- Stroombergen MC, Waring RH. Determination of glutathione S-transferase mu and theta polymorphisms in neurological disease. *Hum Exp Toxicol* 1999; 18:141-5. [PMID: 10215103]

18. Ahmad H, Singh SV, Medh RD, Ansari GA, Kurosky A, Awasthi YC. Differential expression of alpha, mu and pi classes of isoenzymes of glutathione S-transferase in bovine lens, cornea and retina. *Arch Biochem Biophys* 1988; 266:416-26. [PMID: 3190236]
19. Ahmad H, Singh SV, Srivastava SK, Awasthi YC. Glutathione S-transferase of bovine iris and ciliary body: characterization of isoenzymes. *Curr Eye Res* 1989; 8:175-84. [PMID: 2714102]
20. Srivastava SK, Singhal SS, Bajpai KK, Chaubey M, Ansari NH, Awasthi YC. A group of novel glutathione S-transferase isoenzymes showing high activity towards 4-hydroxy-2-nonenal are present in bovine ocular tissues. *Exp Eye Res* 1994; 59:151-9. [PMID: 7835404]
21. Izzotti A, Bagnis A, Sacca SC. The role of oxidative stress in glaucoma. *Mutat Res* 2006; 612:105-14. [PMID: 16413223]
22. Taylor A, Nowell T. Oxidative stress and antioxidant function in relation to risk for cataract. *Adv Pharmacol* 1997; 38:515-36. [PMID: 8895822]
23. Beatty S, Koh H, Phil M, Henson D, Boulton M. The role of oxidative stress in the pathogenesis of age-related macular degeneration. *Surv Ophthalmol* 2000; 45:115-34. [PMID: 11033038]
24. Oz O, Ates AN, Tamer L, Yildirim O, Adiguzel U. Glutathione S-transferase M1, T1, and P1 gene polymorphism in exudative age-related macular degeneration: a preliminary report. *Eur J Ophthalmol* 2006; 16:105-10. [PMID: 16496253]
25. Abu-Amero KK, Milcarek B, Bosley TM. GSTM1 and GSTT1 deletion genotypes in various spontaneous optic neuropathies in Arabs. *Br J Ophthalmol* 2009; 93:1101-4. [PMID: 19286687]
26. Unal M, Guven M, Devranoglu K, Ozaydin A, Batar B, Tamcelik N, Gorgun EE, Ucar D, Sarici A. Glutathione S transferase M1 and T1 genetic polymorphisms are related to the risk of primary open-angle glaucoma: a study in a Turkish population. *Br J Ophthalmol* 2007; 91:527-30. [PMID: 16973661]
27. Abu-Amero KK, Morales J, Mohamed GH, Osman MN, Bosley TM. Glutathione S-transferase M1 and T1 polymorphisms in Arab glaucoma patients. *Mol Vis* 2008; 14:425-30. [PMID: 18334963]
28. Yilmaz A, Tamer L, Ates NA, Yildirim O, Yildirim H, Atik U. Is GST gene polymorphism a risk factor in developing exfoliation syndrome? *Curr Eye Res* 2005; 30:575-81. [PMID: 16020292]
29. Jansson M, Rada A, Tomic L, Larsson LI, Wadelius C. Analysis of the glutathione S-transferase M1 gene using pyrosequencing and multiplex PCR-no evidence of association to glaucoma. *Exp Eye Res* 2003; 77:239-43. [PMID: 12873455]
30. Khan MI, Micheal S, Rana N, Akhtar F, den Hollander AI, Ahmed A, Qamar R. Association of tumor necrosis factor alpha gene polymorphism G-308A with pseudoexfoliative glaucoma in the Pakistani population. *Mol Vis* 2009; 15:2861-7. [PMID: 20029655]
31. Bland JM, Altman DG. Multiple significance tests: the Bonferroni method. *BMJ* 1995; 310:170. [PMID: 7833759]
32. Belknap JK. Empirical estimates of Bonferroni corrections for use in chromosome mapping studies with the BXD recombinant inbred strains. *Behav Genet* 1992; 22:677-84. [PMID: 1290453]
33. Ludbrook J. Multiple comparison procedures updated. *Clin Exp Pharmacol Physiol* 1998; 25:1032-7. [PMID: 9888002]
34. Gao X, Starmer J, Martin ER. A multiple testing correction method for genetic association studies using correlated single nucleotide polymorphisms. *Genet Epidemiol* 2008; 32:361-9. [PMID: 18271029]
35. Tezel G. The immune response in glaucoma: A perspective on the roles of oxidative stress. *Exp Eye Res*. 2010 [PMID: 20709058]
36. Izzotti A, Sacca SC, Longobardi M, Cartiglia C. Mitochondrial Damage in the Trabecular Meshwork of patients with glaucoma. *Arch Ophthalmol* 2010; 128:724-30. [PMID: 20547950]
37. Yang J, Tezel G, Patil RV, Romano C, Wax MB. Serum autoantibody against Glutathione S Transferase in Patients with Glaucoma. *Invest Ophthalmol Vis Sci* 2001; 42:1273-6. [PMID: 11328739]
38. Malone PE, Hernandez MR. 4-hydroxynonenal, a product of oxidative stress, leads to an antioxidant response in optic nerve head astrocytes. *Exp Eye Res* 2007; 84:444-54. [PMID: 17173895]
39. Izzotti A, Sacca SC, Cartiglia C, De Flora S. Oxidative deoxyribonucleic acid damage in the eyes of glaucoma patients. *Am J Med* 2003; 114:638-46. [PMID: 12798451]
40. Izzotti A. DNA damage and alterations of gene expression in chronic-degenerative diseases. *Acta Biochim Pol* 2003; 50:145-54. [PMID: 12673355]
41. Zenkel M, Kruse FE, Naumann GOH, Schrehardt US. Impaired cytoprotective mechanisms in eyes with pseudoexfoliation syndrome/glaucoma. *Invest Ophthalmol Vis Sci* 2007; 48:5558-66. [PMID: 18055805]
42. Stavropoulou C, Korakakib D, Riganaa H, Voutsinasc G, Polyzoib M, Georgakakosa VN, Manolaa KN, Karageorgioub CE, Sambani C. Glutathione-S-transferase T1 and M1 gene polymorphisms in Greek patients with multiple sclerosis: a pilot study. *Eur J Neurol* 2007; 14:572-4. [PMID: 17437619]

The print version of this article was created on 21 October 2010. This reflects all typographical corrections and errata to the article through that date. Details of any changes may be found in the online version of the article.