

Interrupting Malaria Transmission: Quantifying the Impact of Interventions in Regions of Low to Moderate Transmission

Michelle L. Gatton^{1,2*}, Qin Cheng^{1,3}

1 Malaria Drug Resistance and Chemotherapy Laboratory, Queensland Institute of Medical Research, Brisbane, Queensland, Australia, **2** Griffith Medical Research College, Brisbane, Queensland, Australia, **3** Drug Resistance and Diagnostics, Australian Army Malaria Institute, Brisbane, Queensland, Australia

Abstract

Malaria has been eliminated from over 40 countries with an additional 39 currently planning for, or committed to, elimination. Information on the likely impact of available interventions, and the required time, is urgently needed to help plan resource allocation. Mathematical modelling has been used to investigate the impact of various interventions; the strength of the conclusions is boosted when several models with differing formulation produce similar data. Here we predict by using an individual-based stochastic simulation model of seasonal *Plasmodium falciparum* transmission that transmission can be interrupted and parasite reintroductions controlled in villages of 1,000 individuals where the entomological inoculation rate is <7 infectious bites per person per year using chemotherapy and bed net strategies. Above this transmission intensity bed nets and symptomatic treatment alone were not sufficient to interrupt transmission and control the importation of malaria for at least 150 days. Our model results suggest that 1) stochastic events impact the likelihood of successfully interrupting transmission with large variability in the times required, 2) the relative reduction in morbidity caused by the interventions were age-group specific, changing over time, and 3) the post-intervention changes in morbidity were larger than the corresponding impact on transmission. These results generally agree with the conclusions from previously published models. However the model also predicted changes in parasite population structure as a result of improved treatment of symptomatic individuals; the survival probability of introduced parasites reduced leading to an increase in the prevalence of sub-patent infections in semi-immune individuals. This novel finding requires further investigation in the field because, if confirmed, such a change would have a negative impact on attempts to eliminate the disease from areas of moderate transmission.

Citation: Gatton ML, Cheng Q (2010) Interrupting Malaria Transmission: Quantifying the Impact of Interventions in Regions of Low to Moderate Transmission. PLoS ONE 5(12): e15149. doi:10.1371/journal.pone.0015149

Editor: Georges Snounou, Université Pierre et Marie Curie, France

Received: August 12, 2010; **Accepted:** October 26, 2010; **Published:** December 2, 2010

Copyright: © 2010 Gatton, Cheng. This is an open-access article distributed under the terms of the Creative Commons Attribution License, which permits unrestricted use, distribution, and reproduction in any medium, provided the original author and source are credited.

Funding: This research was funded by National Institutes of Health grant 2R01 AI-47500. M.L.G. was supported in part by an NHMRC Career Development Award. The funders had no role in study design, data collection and analysis, decision to publish, or preparation of the manuscript.

Competing Interests: The authors have declared that no competing interests exist.

* E-mail: michelle.gatton@qimr.edu.au

Introduction

Past malaria elimination campaigns have resulted in more than 40 countries becoming malaria-free [1,2], reinforcing that local elimination is possible, particularly from marginal areas with unstable transmission where an estimated 1 billion people live [3]. After two decades focused on malaria control [4], elimination is back in the spotlight with 39 countries planning for, or already committed to, elimination [5]. Malaria elimination entails the interruption of malaria transmission to zero and then the maintenance of this state by controlling the importation of infections. While the WHO malaria elimination guidelines provide valuable information on how to transition from control to elimination, they do not address the likely impact of the suggested interventions or the time frame required to achieve elimination in different transmission settings [6].

Mathematical models have long been used to model disease patterns with the main practical aim of understanding the dynamics of transmission and impact of interventions well enough to guide and manage control programs [7]. To this end, numerous models have been developed and used to estimate the

impact of interventions including, but not limited to, insecticide treated nets (ITNS) [8,9,10], artemisinin combination therapy (ACT) [11], case management [12] and vaccines [10,13] in specific settings, usually Africa. The potential for elimination has also been investigated using more generic frameworks [14,15]. In an ideal world countries would deploy an integrated malaria control program using a combination of interventions which target different aspects of transmission, to increase the chances of success [16]. The financial and logistic reality is that most regions need to select a subset of interventions and therefore need information about the relative effects of different combinations.

In this study we use an individual-based discrete-time stochastic simulation model of seasonal *Plasmodium falciparum* transmission to compare the impact of selected interventions in low to moderate transmission settings. The interventions included in the study focus on chemotherapy and reduction of human-mosquito contact through use of untreated bed nets. In general, the results support those from previous models, but also provide novel predictions of long-term impacts on parasite carriage and population structure when treatment coverage is improved.

Materials and Methods

The model expands an existing parameterized within-host dynamics model, which was validated using data from malaria naïve patients [17,18] to encompass a population of individuals and parasites linked by mosquito transmission. This model is built on the premise that the biology of the parasite and hosts, and their interactions, is independent of geographic location. The epidemiology of the disease is defined by the combination of social and behavioural characteristics within the human population, the mosquito population and climatic variables. These factors influence the exposure of individuals to the parasite, resulting in each host mounting an immune response dependent on their exposure. A simple description of the processes incorporated into the model, and the order of application, are outlined in Figure 1. Parameter values are given in Table 1.

Human population dynamics and disease

The initial age distribution and death-rates in a community of 1,000 people were based on those reported for Gabon [19,20]. To maintain a closed population, a birth is assumed whenever a death occurred. The new individual is naïve to malaria with no protective maternal antibodies.

Within an individual host, three immune responses are simulated: 1) a non-specific immune (NSI) response based on the total number of rupturing parasites, 2) a non-variant immune response specific to individual parasite clones, and 3) a PfEMP1 variant-specific antibody response. The mathematical form of these responses, along with a sensitivity analysis, was first reported in Paget-McNicol et al. [21], with some subsequent refinements [17,18]. The majority of the parameters in the model were fitted using data from patients infected with the El Limon and Santee Cooper strains of *P. falciparum* [17]. The triggering and dynamics

of anti-PfEMP1 antibodies to specific PfEMP1 variants are as previously defined [18]. The magnitude of the NSI response, referred to here as fever (F_t), has the mathematical form

$$F_t = \begin{cases} 0, & Z_t = 0 \\ \frac{(Z_t - T_t)}{20T_t}, & 0 < Z_t < 101T_t \\ 5 & Z_t \geq 101T_t \end{cases}$$

where Z_t is the number of infected RBC replicating on day t and T_t is the fever threshold as previously defined [18]. Previous model fitting was based on F_t values >2 corresponding to fevers $>104^\circ\text{F}$ [17]. A lower value of 0.3 is used here as a threshold for when the NSI response was sufficient to cause clinical symptoms. A symptomatic episode is defined as one or more fever events not separated by more than 7 days.

Parasite dynamics

The *var* genes (which encode PfEMP1) allocated to each parasite clone are 1) randomly selected (with replacement) from the global population of variants for introduced parasites, or 2) selected from those present in the male and female gametes during recombination in the mosquito. No within gene recombination is included in the model. The calculations for parasite switching and the switching probabilities for each antigenically distinct *var* gene in the population (p_j) were as previously reported assuming a global population of 400 antigenically distinct genes [18]. It is important to note that the number of antigenically distinct *var* genes is less than the number of unique *var* gene sequences due to antigenic cross-reactivity. This point is most clearly highlighted by the parity-dependent antibody response which interferes with binding of parasites to the placenta, even though the PfEMP1 variants

For each day of the simulation ...

1. Simulate births & deaths in community
2. Determine if any new parasites are introduced to population
3. Update levels of anti-PfEMP1 antibodies for each individual
4. For each infected individual...
 - a. Simulate antigenic variation in PfEMP1 in asexual parasites
 - b. Determine if a non-specific immune response will be triggered after RBC rupture
 - c. Asexual parasites multiply & early stage gametocytes are produced
 - d. Immature gametocytes develop
5. Release new asexual parasites from the liver if the pre-erythrocytic stage is complete
6. For each infected individual...
 - a. Determine if treatment is sought and when it will be received
 - b. Implement non-specific immune response if triggered
 - c. Trigger specific anti-PfEMP1 antibodies if above the threshold
7. Mature mosquito larvae hatch into susceptible mosquitoes
8. Determine how many infected mosquitoes feeding survive the feeding cycle
9. Simulate feeding of susceptible mosquitoes & determine if any are infected (based on gametocyte density in hosts bitten)
10. Simulate feeding of infectious mosquitoes and initiate a new liver stage infection in any host that is infected
11. Transfer infected mosquitoes to infectious if EIP has been reached
12. Simulate mosquito reproduction

Figure 1. Description of processes, and order of application, for the malaria transmission model.

doi:10.1371/journal.pone.0015149.g001

Table 1. Description of variables used in the model.

Variable/Description	Data	Value used
Probability of new parasite being introduced to population	-	0.02/day
Probability of mosquito surviving one feeding cycle	0.58–0.70 [14,43]	0.65
Length of feeding cycle	2.7–3.7 days [14,43]	3 days
Probability of mosquito feeding on human	0.72–0.95 [14]	0.75
Size of mosquito blood meal	0.97 μ l (median value) [44]	1 μ l
Length of extrinsic incubation period (EIP)	Temp. dependent [45]	9 days (at 28°C)
Larval development time	Temp. dependent [45]	12 days (at 28°C)
Probability of infectious mosquito bite resulting in liver stage infection	0.583 [29]	0.6
Duration of liver stage infection	6 days [46]	6 days
Proportion of gametocytes that are male	0.2–0.3 [47,48]	0.25
Total number of antigenically distinct <i>var</i> genes in parasite population	350–1230* [49]	400
Number of <i>var</i> genes per parasite	59 [50]	60
Maximum parasite replication rate in the absence of any immune response (<i>R</i>)	8–32 [51]	16

*represents number of sequence types which may be more than antigenic types.
doi:10.1371/journal.pone.0015149.t001

thought to be responsible for the binding are structurally similar but unique in sequence [22]. Little, if any data exists on the number of antigenically distinct PfEMP1 variants circulating within populations, so the value of 400 is assumed.

Introductions of new parasite types into the population are permitted with a daily probability of 0.02 and implemented by establishing a liver-stage infection with the new parasite in a randomly selected host.

Asexual parasites replicate every 2 days and early stage gametocytes are produced. The replication and implementation of the non-variant specific immunity uses the mathematical form previously described [18]:

$$Y_{r,j,i,t+1} = Bi \left(Y_{r,j,i,t} \times P \times R, \frac{(1 - B_{r,t})}{Antibody_{j,i,t}} \right) - G1_{r,i,t}$$

$$B_{r,t} = 0.2 + \left(\frac{0.1}{1 + \exp((t_0 - t + 30)/6)} \right) + \left(\frac{0.2}{1 + \exp((t_r - t + 30)/6)} \right)$$

where $Y_{r,j,i,t}$ is the number of clone r asexual parasites expressing PfEMP1 variant i in host j on day t , P is a conversion factor from number of parasites per μ l of blood to total number of parasites in a host (assumed to be 5×10^6), R is the maximum replication rate of parasites in the absence of any immune response, $Antibody_{j,i,t}$ is the amount of anti-PfEMP1 antibody i for host j on day t , t_r is the first day of infection with parasite r and t_0 is the first day of the first infection within the host, and $G1_{r,i,t}$ are the number of early stage gametocytes of parasite type r that express PfEMP1 variant i produced on day t . It is assumed that the conversion rate of asexual parasites to G1 gametocytes follows a log-normal distribution with $G1_{r,i,t} \sim Bi \left(Y_{r,j,i,t}, 10^N(\eta, 0.2^2) \right)$ and $\eta = -1.6$ when $F_t = 0$, or -1.4 when $F_t > 0$. These conversion rates are higher than those reported for the conversion from asexual to circulating mature gametocytes [23] to account for death of early stage gametocytes due to susceptibility to the NSI response and circulating anti-PfEMP1 antibodies [24,25].

Gametocyte dynamics are as previously described [26]. When gametocytes from more than one parasite type are ingested by the mosquito, a male and female are randomly selected to mate based on the relative density of each parasite.

All asexual parasites and gametocytes are susceptible to the host NSI response [24,27]. The number of parasites surviving an active NSI response ($F_t > 0$) follows a binomial distribution with survival probability $\exp(-\alpha \times F_t)$ and $\alpha = 1, 2, 1/2.75$ and $1/1.5$ for ring stage asexual parasites, late stage asexual parasites, early stage gametocytes and mature gametocytes, respectively. The scaling factor, α , was used to alter the susceptibility of parasites based on their life-stage. The difference in survival of late stage asexual parasites compared to ring-stage parasites reflects experimental data [27], while the relative gametocyte susceptibility assumes that gametocytes, like stress-induced stages in other organisms, are more resilient to increased temperature than asexual parasites. In addition, it is assumed that sequestration of early stage gametocytes in the spleen and bone marrow provides some protection, relative to mature gametocytes, from the NSI effect.

Mosquito infection and transmission

The mosquito population consists of susceptible, infected (not infectious) and infectious mosquitoes. Super-infection is not permitted and mosquitoes do not recover from infection. The baseline number of mosquitoes (mos_0) in the population is specified, as well as an amplification factor, a_p , for each day of the year. The amplification factor represents the relative number of mosquitoes born and is used to introduce seasonality. The seasonal pattern was selected so that $\sim 95\%$ of mosquito exposure occurred in 7 months of each year, a pattern similar to that reported for Sotuba, Mali [28]. The number of new mosquitoes emerging to join the susceptible population on day $(t+12)$, mb_{t+12} , is $mb_{t+12} = \frac{a_p \times mos_0 \times (1 - S)}{Fc \times S}$, where S is the probability of a mosquito surviving one feeding cycle and Fc is the length of the feeding cycle.

It is assumed each mosquito feeds randomly once per feeding cycle, with the day of feeding within the cycle randomly assigned and fixed for the life of the mosquito. Mosquito survival is determined once per feeding cycle using a binomial distribution with probability S . Infection of a susceptible mosquito during feeding is dependent on at least one male and one female gametocyte being ingested in the bloodmeal. The probability of an infectious mosquito bite generating a new liver-stage infection in the host is fixed at 0.6 [29].

Simulations

The model was compiled and executed using the Griffith University Research Computing Services Sun Fire V20Z HPC Cluster. Each simulation considered a village of 1,000 individuals and used the same host, parasite and entomological parameter values. Different transmission settings were achieved by altering mos_0 and each was run for 10,000 days to establish baseline transmission and host immunity profile. The community profile on day 10,000 was used as a common start point for simulations incorporating malaria interventions.

Three primary interventions (improved treatment rates of symptomatic individuals (T90), mass drug administration (MDA), and untreated bed nets), plus combinations, were simulated for 5,000 days, with 10–20 simulations for each transmission/intervention combination. Model output was summarised, graphed and analysed using Sigma Plot (Version 11) and SAS for Windows (Version 5.1.2600, SAS Institute Inc). Each intervention was assessed for its ability to interrupt malaria transmission for at least 150 days, that is, there are no infectious mosquitoes in the population for at least 150 days. We have classified parasite introductions (importations) as being controlled if they do not become established in the population by surviving between transmission seasons.

Baseline conditions. Each symptomatic episode had a 50% chance of receiving treatment. It is recognised that often there is a delay between becoming symptomatic and seeking treatment. In the baseline simulation it is assumed that 10% of the people who seek treatment get that treatment within 24 hours of becoming symptomatic, while 10%, 10%, 25%, 25% and 20% will receive treatment 2, 3, 4, 5 and 6 days after becoming symptomatic, respectively. This distribution of when treatment was received following the onset of fever was based on a variety of data on treatment seeking behaviour in Vietnam and Africa [30,31,32,33,34]. In all simulations the use of anti-malarial drugs to treat non-malarious fevers occurred randomly at a rate of 0.1% of the population per day.

It is assumed that only one long-acting drug or drug combination is administered, and that it is 100% effective with no resistance. 100% of parasites are killed for the first 30 days post-treatment, followed by a rapid decline in effectiveness so that by day 35 any residual drug is ineffective, in line with elimination profile of sulfadoxine-pyrimethamine.

T90 intervention. Each symptomatic episode had a 90% chance of receiving treatment with 20%, 40%, 30%, 5%, 3%, 2% of these people receiving treatment 1, 2, 3, 4, 5 and 6 days after becoming symptomatic, respectively. The shortening of the time to treatment is representative of the changes seen after provision of health posts within communities in Vietnam [30].

Bed nets. 80% untreated bed net coverage is assumed with each net providing protection from 80% of mosquito bites. Nets are randomly assigned to individuals at the start of the intervention and it is assumed that the bed nets are used every day. The baseline treatment conditions are maintained.

The nets are untreated so only act to reduce human-mosquito contact, having no effect on survival of mosquitoes. Hence the impact of the intervention will be conservative compared to the long-lasting ITNs currently being deployed. Inclusion of insecticide effects is beyond the scope of the current work due to the need to better quantify important ecological parameters such as the killing probability, possible repellancy effects and mosquito behavioural changes [35].

Where a feeding mosquito fails to get a blood meal due to a bed net, the model assumes the mosquito to seek another host, up to a maximum of three, after which it will source a blood meal from a

non-human source. The probability of survival during this process is assumed to remain unchanged.

MDA. At the start of the intervention 100% of the population received a curative dose of the same anti-malarial drug used to treat symptomatic individuals. The treatment is repeated again 40 days into the intervention, after which no further actions are taken other than the initial baseline conditions.

Sensitivity analysis for bed net and symptomatic treatment interventions

The sensitivity of the model output to coverage levels for the bed net intervention and treatment of symptomatic cases was assessed by comparing the cumulative entomological inoculation rate (EIR) and fever during the first five years following implementation. For the bed net intervention, additional sensitivity analysis was performed in which the assumed reduction in mosquito exposure cause by a bed net was varied between 75 and 85%.

Results

The model was used to simulate infection and disease in low to moderate transmission settings with EIRs between 2 and 15 infectious bites per person per year. Under baseline conditions (prior to interventions) with an EIR of ~ 3 (low transmission), 12–15% of the population had patent parasitemia at the peak of the transmission season with $< 1\%$ of individuals having multiple infections. The median prevalence of patent parasitemia (≥ 100 parasites/ μl) in the population varied from 1.9 to 2.6% across the simulations, comparable to the median for children aged 4 to 8 years (2.0–2.9%). The mean number of fever episodes in the 0–3 year age group was 1.29–1.59 per person per year, varying between simulations, being 84–90% of the actual number of infections received (1.49–1.87 per person per year).

Baseline simulations in the moderate transmission scenario (EIR ~ 15) represent a community where the frequency of fever episodes decreased with age from 3.5–3.9 per person per year in the 0–3 year age group to 1.7–2.4 fevers per person per year in > 14 year olds. During the peak transmission season up to 35% of the population had patent parasitemia with 8–10% infected with ≥ 2 parasite strains. The median prevalence rate over the simulation period was 5.3–7.9% in the entire population and 7.5–9.2% in children aged 4–8 years, varying between individual simulations.

Three primary interventions, plus combinations, were simulated for both baseline conditions. At the lower transmission (EIR ~ 3) all interventions except T90 interrupted transmission and this was sustained until the end of the simulation (Table 2). The time to reach the 150 day criterion varied between simulations of the same intervention, highlighting the stochastic nature of the process (Table 2). The T90+bed net intervention could interrupt transmission in simulations with an initial EIR < 7 (Figure 2). However this was not always achieved within 13.7 years (5,000 days); the proportion of simulations resulting in interrupted transmission decreased while the time to elimination tended to increase with increasing EIR (Figure 2).

In the moderate transmission setting the triple combination of MDA+T90+bed nets was the most successful intervention at interrupting transmission and controlling subsequent parasite re-introduction (Table 2). Using this intervention, interrupted transmission was achieved in 85% of simulations 200–562 days after the start of the intervention. The combination of MDA+T90 was almost as effective as the triple combination (80% success in interrupting transmission) and was also able to contain new parasite introductions. Although the T90 and bed net interven-

Table 2. Ability of simulated interventions to interrupt malaria transmission and control reintroductions.

Intervention	Low transmission (EIR ~3)		Moderate transmission (EIR ~15)	
	% interrupting transmission (time ^a)	% where introductions become established	% interrupting transmission (time ^a)	% where introductions become established
T90 ^b	0	-	0	-
MDA ^c	100 (174–1,088)	100	40 (206–414)	100
Bed ^d	100 (1,235–4,458)	0	0	-
T90+Bed	100 (1,034–1,904)	0	0	-
MDA+Bed	100 (171–1,209)	0	65 (201–774)	100
MDA+T90	100 (174–337)	0	80 (205–679)	0
MDA+Bed+T90	100 (71–371)	0	85 (200–562)	0

^aRange of time (days) until transmission is interrupted. Time to interruption is the first occurrence of 150 days with no infectious mosquitoes.

^b90% chance of symptomatic individuals receiving curative treatment; time between appearance of symptoms and treatment is decreased (compared to baseline).

^c100% of population is treated with a curative dose at start of intervention and 40 days later with same drug as used for chemotherapy.

^d80% of the population receive (and use) bed nets; use of a bed net reduces mosquito exposure by 80%.

doi:10.1371/journal.pone.0015149.t002

tions were not able to interrupt transmission, alone or in combination, both reduced the number of fever episodes, and to a lesser extent, the EIR compared to baseline (Figure 3). The relative benefits of the interventions on morbidity were found to be age specific, such that the relative reduction in fevers was larger in 0–3 year olds compared to >14 year olds for the T90, bed net, T90+bed net, MDA+T90 and MDA+T90+bed net interventions, whereas the MDA and MDA+bed net interventions had a larger relative impact in >14 year olds compared to 0–3 year olds (Figure 3).

Output from the T90 intervention in the moderate transmission setting was analysed further to investigate why the EIR consistently started to increase after 2 years of the intervention, even though morbidity continued to decline (Figure 3). This trend was observed in all simulations of this intervention. This analysis indicated that the T90 intervention caused a decrease in the

proportion of people aged >14 years with patent parasitemia, but an increase in sub-patent parasite carriage relative to baseline (Figure 4). The increase in sub-patent parasite carriage only occurred in older age groups (Figure 4).

The sensitivity analysis indicated that the impact of the bed net and symptomatic treatment interventions was dependent on intervention coverage with higher coverage having larger impacts on transmission and morbidity (Figure 5). The relationship between changing intervention coverage and impact were not linear, particularly for morbidity where bed nets had little impact until coverage reached at least 50% (Figure 5). To assess the sensitivity of the model output to variations in the assumed efficacy of bed nets, the model was implemented with 80% coverage and efficacy of 75% or 85%. Compared to the initially assumed 80% efficacy, a reduction to 75% resulted in an average 7.1% increase in EIR, and 18.9% increase in fever. This equates to 1.19

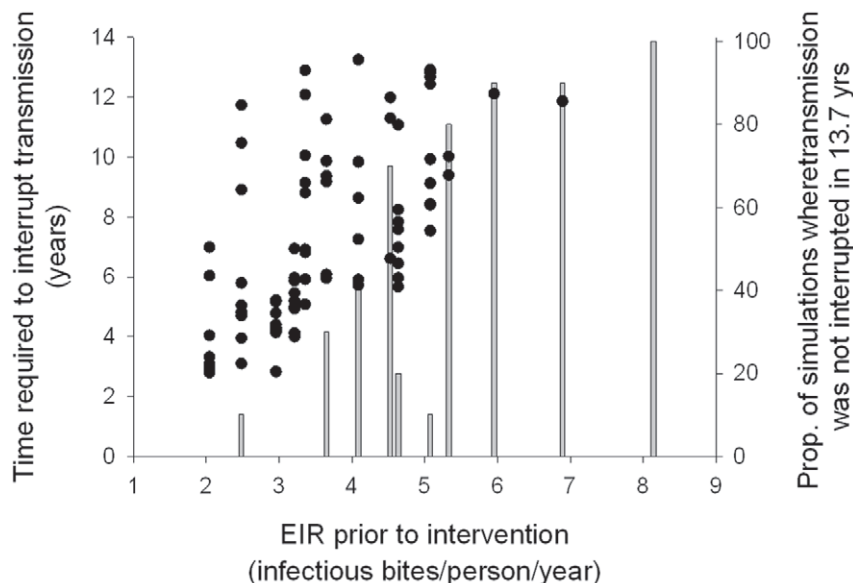


Figure 2. Times required to interrupt malaria transmission and probability under the T90+bed net intervention. Filled symbols indicate times to interruption. Bars illustrate the proportion of simulations in which transmission was not interrupted within 5,000 days (13.7 years). Ten simulations using identical starting conditions for each initial EIR were conducted.

doi:10.1371/journal.pone.0015149.g002

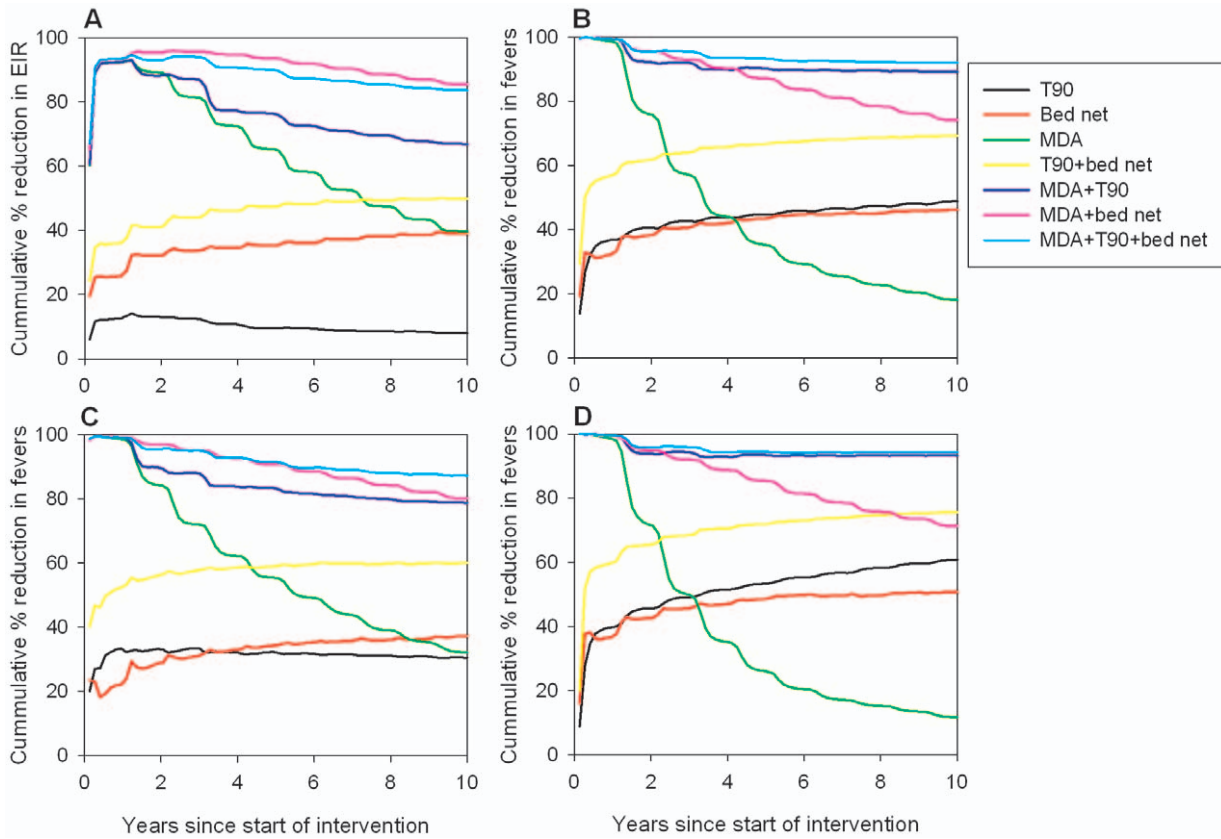


Figure 3. Average long-term impacts of interventions on EIR and morbidity. Impacts for (A) EIR, (B) population morbidity, (C) morbidity in 0–3 year olds and (D) >14 year olds are given relative to baseline for moderate transmission simulations. Only results from simulations in which elimination was not achieved and sustained are included, reducing the sample sizes to n=3 and n=5 for the MDA+bed+T90 and MDA+T90 interventions, respectively.
doi:10.1371/journal.pone.0015149.g003

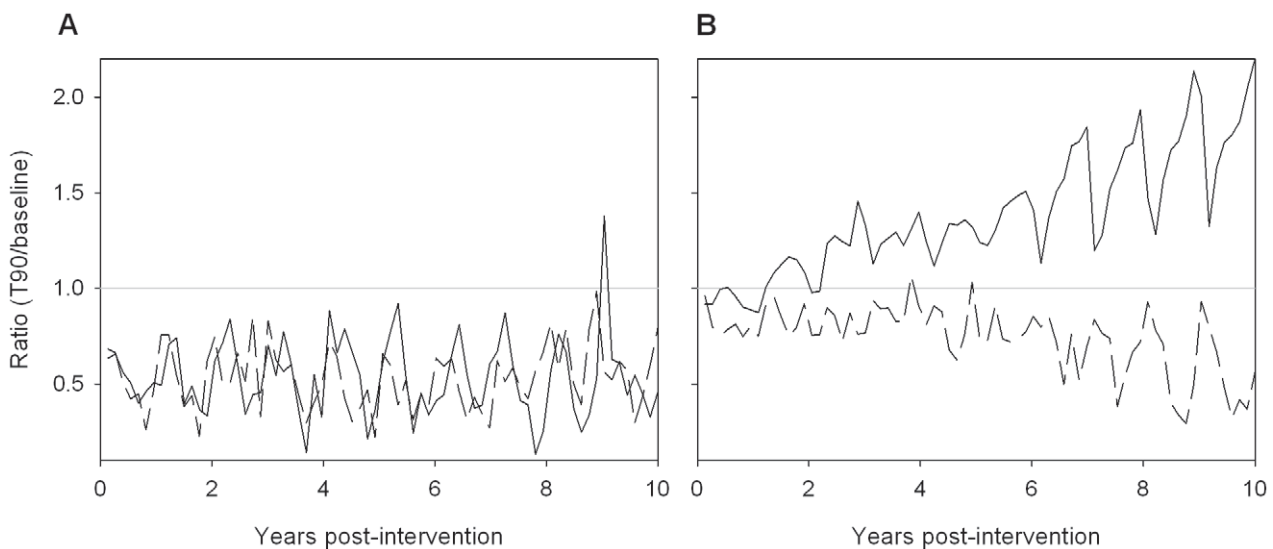


Figure 4. Simulated impact of T90 intervention on parasitemia. Data are expressed as the ratio of mean number of patent (≥ 100 parasites/ μ l; dashed line) or sub-patent (< 100 parasites/ μ l; solid line) infections to baseline in (A) 0–3 year olds and (B) >14 year olds. Values < 1 represent fewer infections under the intervention compared to baseline, while > 1 represents more infections under the intervention.
doi:10.1371/journal.pone.0015149.g004

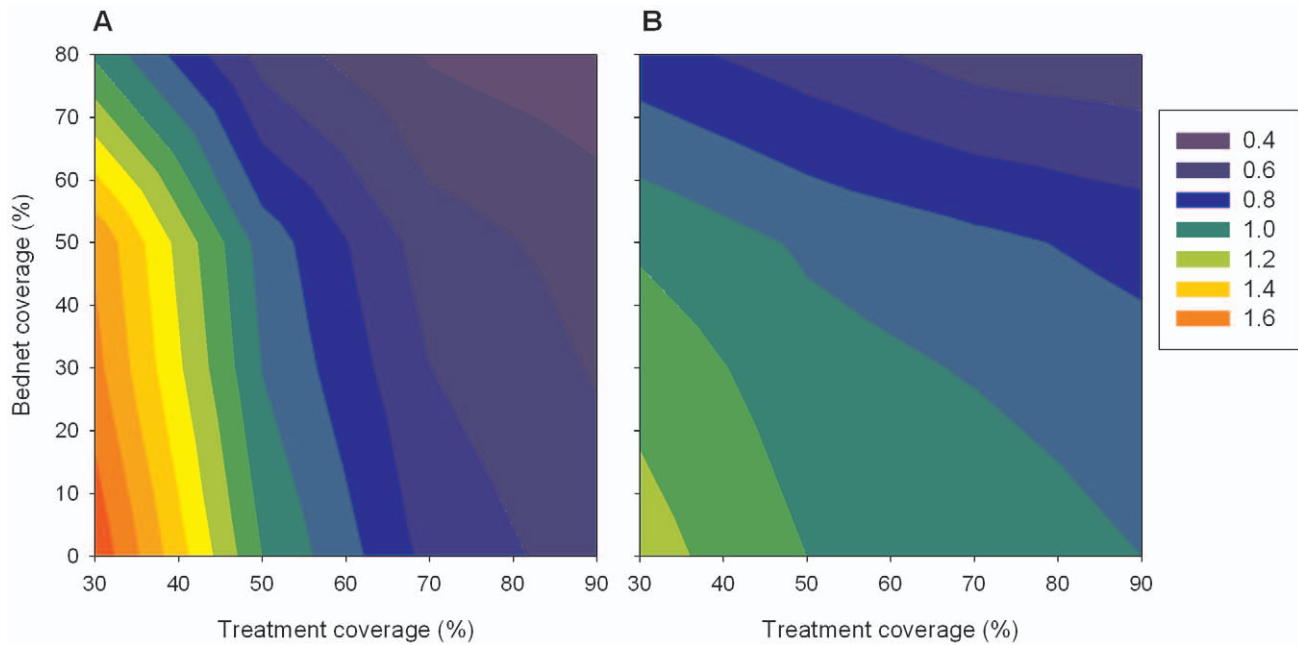


Figure 5. Sensitivity of model output to treatment coverage. Changes in (A) fever and (B) EIR are compared to baseline (50% treatment and 0% bed net coverage). Contours represent the ratio of intervention to baseline 5 years after start of intervention. doi:10.1371/journal.pone.0015149.g005

additional fevers per person over the first 5 years of the intervention. Improving the efficacy from 80% to 85% reduced EIR and fever by an average of 12.1% and 11.8%, respectively.

Discussion

We used a stochastic simulation model of *P. falciparum* disease and transmission to assess the impact of three types of interventions in villages with low to moderate transmission. This study focused on low to moderate transmission as countries in these regions are most likely to undertake elimination activities in the current program. Prior to the interventions, the low transmission scenario (EIR \sim 3) represented a community with no acquired clinical immunity and low multiplicity of infection. In contrast, the community in the moderate transmission scenario (EIR \sim 15) had some acquired clinical immunity, evidenced by the decreasing frequency of fever episodes with age. The combination of seasonal transmission and a long-acting anti-malarial drug produced a relatively low number of fevers in the youngest age group, compared to the number of infections. The parasite dynamics within this community was similar to the pattern reported for a small population in Brazil [36].

Our results for the generalized communities demonstrate that interruption of *P. falciparum* transmission for at least 150 days using currently available tools is possible in both low and moderate transmission settings, supporting the results of previous studies [8,16,37]. As expected, the likelihood of interrupted transmission decreased with increasing EIR, while the time required increased. It is important to note that the time estimates are a best case scenario under the simulated conditions since the interventions were assumed to be deployed and active on the nominated day of implementation. This is in contrast to the usual field deployment of interventions which are rolled out over an extended period. Also it has been shown that population size impacts on the timeliness of responses to interventions, particularly when approaching elimination [15]. Further analyses are required to investigate the impact

of population size on the time to interrupted transmission reported here.

Although it was possible for many of the simulated interventions to interrupt transmission, stochastic influences meant it was usually not guaranteed. The current results were achieved in an environment where parasite introductions were included, a point of difference to other models of intervention impacts [37]. It has been reported that even a small amount immigration of infected people can impact on the ability to eliminate malaria [8]. We found parasite introduction generated highly variable interruption times in the low transmission setting, but that all interventions except MDA were able to prevent parasite introductions becoming established. In the moderate transmission setting, only combination interventions involving improved treatment of symptomatic cases were able to successfully stop introductions becoming established.

Although not recommended by WHO [6], MDA has been deployed in Cambodia to demonstrate its role as a tool for malaria elimination [38]. In the current study, all interventions using MDA had an immediate and marked impact on morbidity and transmission, however this impact decreased over time in simulations where transmission was not interrupted or reintroduction was not prevented. This was particularly the case for MDA used in isolation. The relative benefits on morbidity were noted to be age-specific and this is attributable to the presence of acquired clinical immunity in older individuals. Simulation results from a different model show a similar rebound effect when regularly administered mass screening and treatment interventions cease [37]. Therefore, the short-lived benefits of MDA reinforce that it should only be used in combination with other interventions.

The model structure developed is such that interventions are directly simulated, meaning that it is not necessary to make assumptions a priori about the downstream impacts of the intervention. Instead the model's dynamic nature where transmission, host infectiousness and host immunity are intimately linked,

changing over time, allows downstream intervention impacts to evolve during the simulation. To achieve these features the model is more computationally complex than many other deterministic models, and while simple models appear to replicate the major features predicted by more complex models, at least in short-term predictions [39], the results of this study highlight one of the advantages of using a more detailed model; the ability to detect unexpected or subtle changes in the infection profile within the community. Such a change occurred under the T90 intervention in the moderate transmission setting. This intervention caused the EIR to initially decrease by 14%. However after two years the EIR started to increase even though morbidity continued to decline. This increase was consistently seen in all simulations of this intervention suggesting an underlying pattern, rather than stochastic variation. Further investigation revealed that in older individuals the number of patent infections decreased compared to baseline but the number of sub-patent infections increased. This pattern, which does not occur in younger age groups, resulted from the decreased likelihood of introduced parasites becoming established in the population.

Anti-PfEMP1 antibodies provide variant-specific protection against disease [40], and this is reflected in the components of the within-host model. This means semi-immune hosts are more likely to develop symptoms against antigenically different parasites such as those newly introduced into a community. In the T90 intervention there is a high likelihood of symptomatic episodes being treated. Because newly introduced parasites are more likely to produce symptoms, they are also more likely to be terminated by chemotherapy compared to existing parasites, thereby reducing their survival probability. This bias influences the long-term parasite population structure, in favour of existing parasites, resulting in a decrease in the incidence of fever and subsequent treatment, masking the ongoing transmission of parasites in semi-immune hosts.

This observation has not been reported elsewhere since other models of malaria do not typically contain the detail necessary to monitor individual host responses to specific parasite genotypes, or track parasite genotypes. The exception is McKenzie et al [16] who introduced parasite cross-reactivity and found greater parasite persistence in the absence of parasite cross-reactivity. Our results in low to moderate transmission settings show a similar result in the absence of treatment, but when treatment of symptomatic individuals is included the higher likelihood of “new” parasites to generate symptoms and thus be terminated by chemotherapy before transmission outweighs the within host parasite selection caused by host immunity.

References

- World Health Organisation (2008) Global malaria control and elimination: report of a technical review. Geneva, Switzerland.
- Kaneko A, Taleo G, Kalkoa M, Yamar S, Kobayakawa T, et al. (2000) Malaria eradication on islands. *Lancet* 356: 1560–1564.
- Guerra CA, Gikandi PW, Tatem AJ, Noor AM, Smith DL, et al. (2008) The limits and intensity of *Plasmodium falciparum* transmission: implications for malaria control and elimination worldwide. *PLoS Med* 5: e38.
- Rieckmann KH (2006) The chequered history of malaria control: are new and better tools the ultimate answer? *Ann Trop Med Parasitol* 100: 647–662.
- Moonen B, Barrett S, Tulloch J, Jamison DT (2009) Making the Decision. In: Feachem RGA, Phillips AA, Targett GA, eds. *Shrinking the Malaria Map: A Prospectus on Malaria Elimination*. San Francisco: The Global Health Group, Gloable Health Sciences, University of California. pp 1–18.
- World Health Organisation (2007) *Malaria elimination: a field manual for low and moderate endemic countries*. Geneva, Switzerland.
- Koella JC (1991) On the use of mathematical models of malaria transmission. *Acta Trop* 49: 1–25.
- Gu W, Killeen GF, Mbogo CM, Regens JL, Githure JI, et al. (2003) An individual-based model of *Plasmodium falciparum* malaria transmission on the coast of Kenya. *Trans R Soc Trop Med Hyg* 97: 43–50.
- Le Menach A, Takala S, McKenzie FE, Perisse A, Harris A, et al. (2007) An elaborated feeding cycle model for reductions in vectorial capacity of night-biting mosquitoes by insecticide-treated nets. *Malar J* 6: 10.
- Ghani AC, Sutherland CJ, Riley EM, Drakeley CJ, Griffin JT, et al. (2009) Loss of population levels of immunity to malaria as a result of exposure-reducing interventions: consequences for interpretation of disease trends. *PLoS ONE* 4: e4383.
- Okell LC, Drakeley CJ, Bousema T, Whitty CJ, Ghani AC (2008) Modelling the impact of artemisinin combination therapy and long-acting treatments on malaria transmission intensity. *PLoS Med* 5: e226; discussion e226.
- Tediosi F, Maire N, Smith T, Hutton G, Utzinger J, et al. (2006) An approach to model the costs and effects of case management of *Plasmodium falciparum* malaria in sub-saharan Africa. *Am J Trop Med Hyg* 75: 90–103.
- Maire N, Tediosi F, Ross A, Smith T (2006) Predictions of the epidemiologic impact of introducing a pre-erythrocytic vaccine into the expanded program on immunization in sub-Saharan Africa. *Am J Trop Med Hyg* 75: 111–118.
- Killeen GF, McKenzie FE, Foy BD, Schieffelin C, Billingsley PF, et al. (2000) A simplified model for predicting malaria entomologic inoculation rates based on entomologic and parasitologic parameters relevant to control. *Am J Trop Med Hyg* 62: 535–544.

It is common for the impact of control and elimination programs to be monitored using data on malaria morbidity and mortality and slide positive rates, particularly in children [6]. However our results predict that changes in morbidity over-estimate the corresponding changes in transmission, and that the impacts on morbidity are often age-specific. As expected, the impacts of the simulated interventions are sensitive to intervention coverage, although this relationship is not linear. The model output is also likely to be sensitive to the assumed number of feeding attempts made by a mosquito, although this parameter did not form part of the sensitivity analysis. Under the assumed 3 feeding attempts, the sensitivity analysis revealed the model output, particularly the prevalence of fever, is sensitive to the assumed efficacy of the bed net intervention. Considering fever, a bed net intervention with efficacy of 75% and 80% coverage had the same impact as a bed net intervention with 80% efficacy and ~68% coverage. Bed net efficacy depends on a number of factors, some of which are able to be influenced (eg education on proper use, regular maintenance and repair) and some which are inherent to a region (eg feeding characteristics of mosquito population), providing a source of variability when comparing the impact of the intervention between regions which appear to have the same overall net coverage. In this generalized model we have only considered the effect of untreated nets. However similar conclusions have been reported for ITN interventions [41,42], with ITN effectiveness being sensitive to the assumed killing and repellancy effect of the insecticide, in addition to coverage [37].

This study quantifies the results from a new stochastic simulation model applied to villages undergoing low to moderate transmission. The results add further information to the public domain, information ultimately aimed to help policy-makers and public health officials better plan and combat malaria. The results also highlight the potential under some interventions for a shift towards sub-patent parasite carriage which would often not be detected in either case data or standard malaria surveillance. This model outcome warrants further investigation in the field because if confirmed, this feature could impact on the success of elimination efforts even in regions of low to moderate transmission.

Author Contributions

Conceived and designed the experiments: MLG QC. Performed the experiments: MLG. Analyzed the data: MLG. Contributed reagents/materials/analysis tools: MLG. Wrote the paper: MLG QC.

15. Smith DL, Hay SI (2009) Endemicity response timelines for *Plasmodium falciparum* elimination. *Malar J* 8: 87.
16. McKenzie FE, Baird JK, Beier JC, Lal AA, Bossert WH (2002) A biologic basis for integrated malaria control. *Am J Trop Med Hyg* 67: 571–577.
17. Gattton ML, Cheng Q (2004) Investigating antigenic variation and other parasite-host interactions in *Plasmodium falciparum* infections in naive hosts. *Parasitology* 128: 367–376.
18. Gattton ML, Cheng Q (2004) Modeling the development of acquired clinical immunity to *Plasmodium falciparum* malaria. *Infect Immun* 72: 6538–6545.
19. World Health Organization (2006) Life Tables for WHO Member States. World Health Organization. Available: http://www.who.int/whosis/database/life_tables/life_tables.cfm. Accessed 2007 Mar 12.
20. Population Division of the Department of Economic and Social Affairs of the United Nations Secretariat (2007) World Population Prospects: The 2004 Revision Population Database. United Nations. Available: <http://esa.un.org/unpp>. Accessed 2007 Mar 12.
21. Paget-McNicol S, Gattton M, Hastings I, Saul A (2002) The *Plasmodium falciparum* var gene switching rate, switching mechanism and patterns of parasite recrudescence described by mathematical modelling. *Parasitology* 124: 225–235.
22. Duffy MF, Caragounis A, Noviyanti R, Kyriacou HM, Choong EK, et al. (2006) Transcribed var genes associated with placental malaria in Malawian women. *Infect Immun* 74: 4875–4883.
23. Eichner M, Diebner HH, Molineaux L, Collins WE, Jeffery GM, et al. (2001) Genesis, sequestration and survival of *Plasmodium falciparum* gametocytes: parameter estimates from fitting a model to malariatherapy data. *Trans R Soc Trop Med Hyg* 95: 497–501.
24. Carter R, Graves PM (1988) Gametocytes. In: Wernsdorfer WH, McGregor I, eds. *Malaria: principles and practice of malariology*. UK: Churchill Livingstone. pp 253–305.
25. Hayward RE, Tiwari B, Piper KP, Baruch DI, Day KP (1999) Virulence and transmission success of the malarial parasite *Plasmodium falciparum*. *Proc Natl Acad Sci U S A* 96: 4563–4568.
26. Gattton ML, Cheng Q (2006) *Plasmodium falciparum* infection dynamics and transmission potential following treatment with sulfadoxine-pyrimethamine. *J Antimicrob Chemother* 58: 47–51.
27. Kwiatkowski D (1989) Febrile temperatures can synchronize the growth of *Plasmodium falciparum* in vitro. *J Exp Med* 169: 357–361.
28. Dicko A, Sagara I, Diemert D, Sogoba M, Niambele MB, et al. (2007) Year-to-year variation in the age-specific incidence of clinical malaria in two potential vaccine testing sites in Mali with different levels of malaria transmission intensity. *Am J Trop Med Hyg* 77: 1028–1033.
29. Boyd MF, Kitchen SF (1937) Observations on induced falciparum malaria. *Am J Trop Med Hyg* 17: 213–235.
30. Giao PT, Vries PJ, Binh TQ, Nam NV, Kager PA (2005) Early diagnosis and treatment of uncomplicated malaria and patterns of health seeking in Vietnam. *Trop Med Int Health* 10: 919–925.
31. Van Nam N, de Vries PJ, Van Toi L, Nagelkerke N (2005) Malaria control in Vietnam: the Binh Thuan experience. *Trop Med Int Health* 10: 357–365.
32. Deressa W (2007) Treatment-seeking behaviour for febrile illness in an area of seasonal malaria transmission in rural Ethiopia. *Malar J* 6: 49.
33. Nshakira N, Kristensen M, Ssali F, Whyte SR (2002) Appropriate treatment of malaria? Use of antimalarial drugs for children's fevers in district medical units, drug shops and homes in eastern Uganda. *Trop Med Int Health* 7: 309–316.
34. Ahorlu CK, Koram KA, Ahorlu C, de Savigny D, Weiss MG (2006) Socio-cultural determinants of treatment delay for childhood malaria in southern Ghana. *Trop Med Int Health* 11: 1022–1031.
35. Ferguson HM, Dornhaus A, Beeche A, Borgemeister C, Gottlieb M, et al. (2010) Ecology: a prerequisite for malaria elimination and eradication. *PLoS Med* 7: e1000303.
36. Orjuela-Sanchez P, Da Silva-Nunes M, Da Silva NS, Scopel KKG, Goncalves RM, et al. (2009) Population dynamics of genetically diverse *Plasmodium falciparum* lineages: community-based prospective study in rural Amazonia. *Parasitology* 136: 1097–1105.
37. Griffin JT, Hollingsworth TD, Okell LC, Churcher TS, White M, et al. (2010) Reducing *Plasmodium falciparum* malaria transmission in Africa: a model-based evaluation of intervention strategies. *PLoS Med* 7: e1000324.
38. Song J, Socheat D, Tan B, Dara P, Deng C, et al. (2010) Rapid and effective malaria control in Cambodia through mass administration of artemisinin-piperazine. *Malar J* 9: 57.
39. White LJ, Maude RJ, Pongtavornpinyo W, Saralamba S, Aguas R, et al. (2009) The role of simple mathematical models in malaria elimination strategy design. *Malar J* 8: 212.
40. Bull PC, Lowe BS, Kortok M, Molyneux CS, Newbold CI, et al. (1998) Parasite antigens on the infected red cell surface are targets for naturally acquired immunity to malaria. *Nat Med* 4: 358–360.
41. Gu W, Novak RJ (2009) Predicting the impact of insecticide-treated bed nets on malaria transmission: the devil is in the detail. *Malar J* 8: 256.
42. Kroeger A, Mancheno M, Alarcon J, Pesse K (1995) Insecticide-impregnated bed nets for malaria control: varying experiences from Ecuador, Colombia, and Peru concerning acceptability and effectiveness. *Am J Trop Med Hyg* 53: 313–323.
43. Burkot TR, Graves PM, Paru R, Battistutta D, Barnes A, et al. (1990) Variations in malaria transmission rates are not related to anopheline survivorship per feeding cycle. *Am J Trop Med Hyg* 43: 321–327.
44. Koella JC, Packer MJ (1996) Malaria parasites enhance blood-feeding of their naturally infected vector *Anopheles punctulatus*. *Parasitology* 113: 105–109.
45. Craig MH, Snow RW, le Sueur D (1999) A climate-based distribution model of malaria transmission in sub-Saharan Africa. *Parasitol Today* 15: 105–111.
46. Coatney GR, Collins WE, Warren M, Contacos PG (1971) *The Primate Malaria*. Washington DC: US Government Printing Office.
47. Pichon G, Awono-ambene HP, Robert V (2000) High heterogeneity in the number of *Plasmodium falciparum* gametocytes in the blood mean of mosquitoes fed on the same blood. *Parasitology* 121: 115–120.
48. Smalley ME, Sinden RE (1977) *Plasmodium falciparum* gametocytes: their longevity and infectivity. *Parasitology* 74: 1–8.
49. Albrecht L, Castineiras C, Carvalho BO, Ladeia-Andrade S, Santos da Silva N, et al. (2010) The South American *Plasmodium falciparum* var gene repertoire is limited, highly shared and possibly lacks several antigenic types. *Gene* 453: 37–44.
50. Gardner MJ, Hall N, Fung E, White O, Berriman M, et al. (2002) Genome sequence of the human malaria parasite *Plasmodium falciparum*. *Nature* 419: 498–511.
51. Garnham PC (1966) *Malaria parasites and other haemosporidia*. Oxford: Blackwell Scientific Publications.