



## Fine structure of the eggshell of the blow fly, *Lucilia cuprina*

**Kabkaew L. Sukontason<sup>1</sup>, Nophawan Bunchu<sup>1</sup>, Tarinee Chaiwong<sup>1</sup>,  
Budsabong Kuntalue<sup>2</sup> and Kom Sukontason<sup>1</sup>**

<sup>1</sup> Department of Parasitology, Faculty of Medicine, Chiang Mai University, Chiang Mai 50200, Thailand

<sup>2</sup> Electron Microscopy Research and Service Center (EMRSC), Faculty of Science, Chiang Mai University, Chiang Mai, Thailand

### Abstract

The fine structure of the eggshell of blow fly, *Lucilia cuprina* (Wiedemann) (Diptera: Calliphoridae), was examined using scanning and transmission electron microscopy. Eggs,  $1.09 \pm 0.07$  mm in length and  $0.25 \pm 0.05$  mm in width, bore a relatively wide plastron that extending along almost the entire length. The polygonal pattern of chorionic sculpture was indistinct. The ultrathin section indicated a multi-layered eggshell having an exochorion, outer endochorion, pillars, an inner endochorion, innermost chorionic layer, and a wax layer. This study provides new information about the fine morphology of blow flies eggs. A key to differentiate the eggs of forensically important flies in Thailand is given.

Keywords: eggshell, ultrastructure, *Lucilia cuprina*, forensic entomology

Correspondence: [klikitvo@mail.med.cmu.ac.th](mailto:klikitvo@mail.med.cmu.ac.th)

Received: 7.11.2005 | Accepted: 5.6.2006 | Published: 19.2.2007

Copyright: Creative Commons Attribution 2.5

ISSN: 1536-2442 | Volume 7, Number 9

Cite this paper as:

Sukontason KL, Bunchu N, Chaiwong T, Kuntalue B, Sukontason K. 2007. Fine structure of the eggshell of the blow fly, *Lucilia cuprina*. 8pp. *Journal of Insect Science* 7:09, available online: [insectscience.org/7.09](http://insectscience.org/7.09)

## Introduction

*Lucilia* (= *Phaenicia*) *cuprina* (Wiedemann, 1830) (Diptera: Calliphoridae) is a fly of medical and veterinary importance, not only as an ectoparasite, but also because it causes myiasis in humans and other mammals, particularly sheep (Zumpt 1965; Stevens and Wall 1997; Tellam et al. 2001; Colditz et al. 2002). It has recently been claimed to be forensically important, since *L. cuprina* was found associated with corpses and could be used in forensic investigations (Smith 1986; Goff 2000; Byrd and Castner 2001; Greenberg and Kunich 2002). In Thailand, the larvae of this species have been found in human corpses in Chiang Mai, northern Thailand (KL Sukontason, unpublished data). Systematically, *L. cuprina* has been classified in the Family Calliphoridae, Subfamily Calliphorinae, and Tribe Luciliini (Kurahashi et al. 1997).

The presence in corpses of fly eggs, larva or puparia, as well as other arthropods can be used in forensic investigation. For example, the presence of only fly eggs in a corpse can be used to estimate a short postmortem interval (Smith 1986; Lord 1990; Anderson 1999; Byrd and Castner 2001; Anderson 2004). However, an essential first step is the species identification of fly eggs. The identity of fly eggs has been performed using light microscopy (Sukontason et al. 2004a) or scanning electron microscopy (SEM) (Kitching 1976; Greenberg and Szyska 1984; Greenberg and Singh 1995). In this study, the fine structure of the eggshell of *L. cuprina* is presented using SEM and transmission electron microscopy (TEM). A key is also provided to differentiate *L. cuprina* eggs from other forensically important fly species in Thailand.

## Materials and Methods

The eggs of *L. cuprina* were obtained from the laboratory colony maintained at the Department of Parasitology, Faculty of Medicine, Chiang Mai University. The rearing procedure was modified by using the technique of Haskell (1990) at room temperature (average, 24–28°C). Fresh pork liver was provided as a larval food source and oviposition site.

For the SEM process, eggs were washed several times using normal saline solution to remove any pork liver tissue residue. The specimens were fixed with 2.5% glutaraldehyde in phosphate buffer solution (PBS) at a pH of 7.4 at 4°C for 24 h. They were then rinsed twice with PBS at

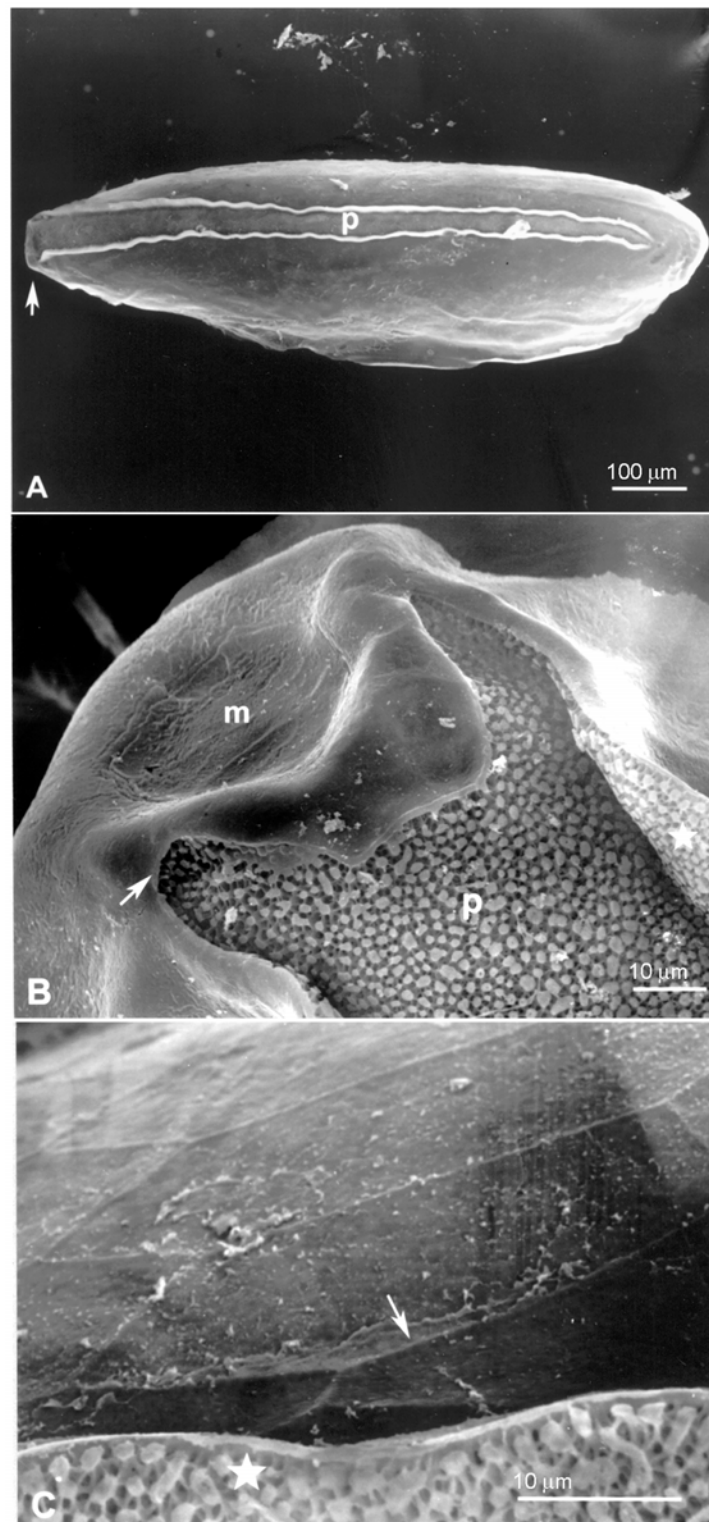
10-min intervals. The rinsed eggs were then treated with 1% osmium tetroxide at room temperature for one day for post-fixation. This was followed by rinsing the eggs twice with PBS and dehydrating with increasing concentrations of alcohol as follows: 30, 50, 70, 80 and 90%. The eggs remained in each concentration of alcohol for 12 h during each step of the dehydration process. The eggs were then placed in absolute alcohol for two 12 h periods followed by acetone for two 12 h periods. Finally, the eggs were subjected to critical point drying in order to complete the dehydration process. In order to view the eggs, they were first attached to aluminum stubs with double-stick tape so they could be coated with gold in a sputter-coating apparatus before being viewed with a JEOL-JSM840A scanning electron microscope (JOEL, www.jeol.com).

The procedure for the TEM process was the same as that for SEM until the eggs were placed in absolute alcohol for two 12 h periods. After that, they were placed in acetone for 2 h before transferring to a ratio of resin:acetone 1:3 for 24 h, 1:1 for 24 h and 3:1 for 24 h, followed by resin for 2, 3 h periods. Egg specimens were embedded in Spurr's resin by placing them into a plastic block, and incubating at 70 °C for 24 h. Section of the eggs was made with a glass knife on an Ultramicrotome (Leica, www.leica-microsystems.com). The ultra-thin section was stained with uranyl acetate and lead citrate; and observed under the JEOL 1200.

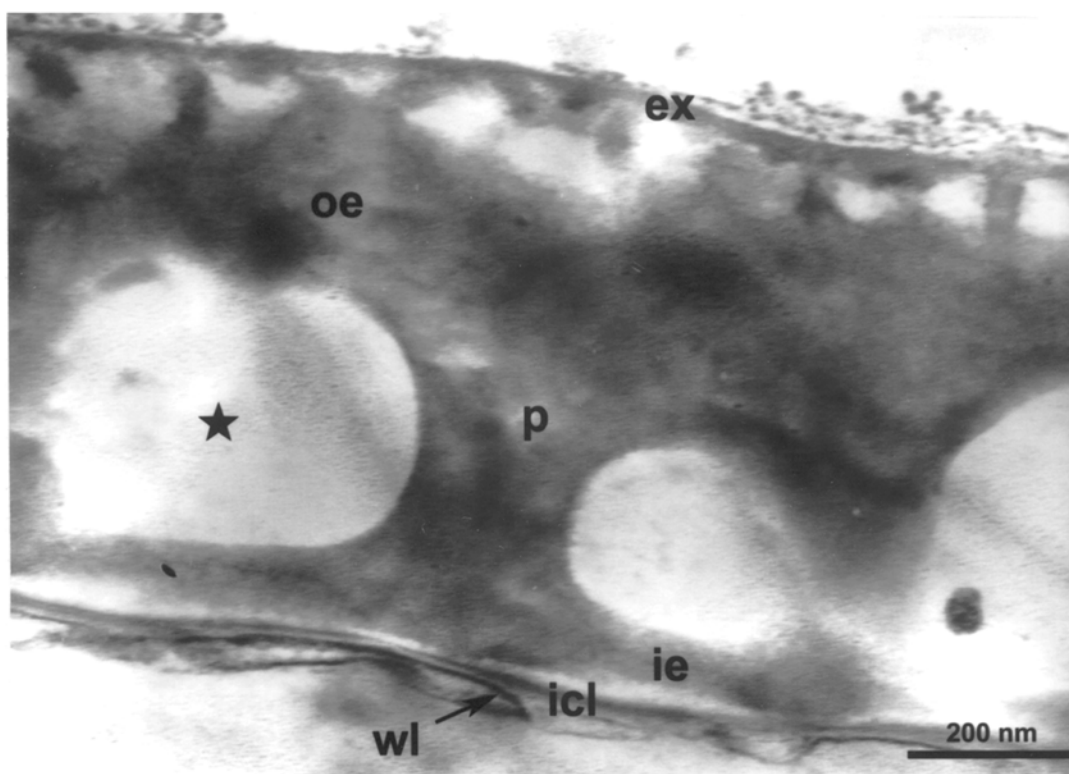
To differentiate *L. cuprina* eggs from other forensically important flies, five species of flies were included in this study, namely Calliphoridae *Chrysomya megacephala*, *Chrysomya rufifacies*, and *Chrysomya nigripes*; Muscidae, *Musca domestica*, *Synthesiomyia nudiseta*; and Phoridae, *Megaselia scalaris*. The eggs were either processed by the SEM or stained with one percent of potassium permanganate solution, as previously described by Sukontason et al. 2004a. Terminology used for of describing fly eggshell followed Margaritis (1985).

## Results and Discussion

The eggs of *L. cuprina* were creamy-white, elongated and  $1.09 \pm 0.07$  mm in length,  $0.25 \pm 0.05$  mm in width ( $n = 50$ ). The plastron originated from the anterior end near the micropyle, and extended dorsally along almost the entire length (Figure 1A). The width of the



**Figure 1.** Scanning electron micrographs of egg of *L. cuprina*. A (Above) Whole egg showing the wide plastron region (p) extending along almost the entire length. Arrow indicates anterior end bearing the micropyle. B (Middle) Plastron (p) near micropyle (m) showing slight bifurcation. Arrow indicates the end of bifurcation; star indicates upright plastron region along the hatching line. C (Lower) Chorionic sculpture that has a smooth surface inside the indistinct polygonal patterns (arrow). Star indicates the upright plastron region along the hatching line.



**Figure 2.** Transmission electron micrograph of the eggshell of *L. cuprina* showing a multi-layered surface with the outermost exochorion (ex), outer endochorion (oe), and layer of vertical pillars (p) between the irregular space of aeropyles (star), inner endochorion (ie), innermost chorionic layer (icl), wax layer (wl).

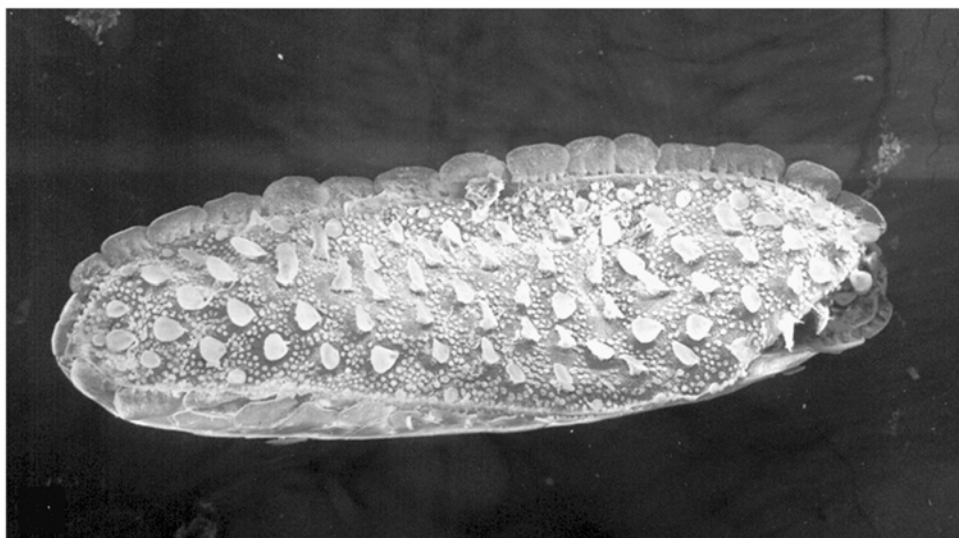
plastron was  $0.022 \pm 0.006$  mm ( $n = 50$ ), representing  $\approx 8.8\%$  of the width of the eggs. The plastron adjacent to the micropyle was slightly bifurcated (Figure 1B), whereas that along the hatching line (Figure 1B, 1C, stars) was upright. The chorionic sculpture had a polygonal pattern (pentagonal or hexagonal) with indistinct boundary (Figure 1C, arrow). Under TEM observation, a section of the eggshell reveals a multi-layered surface with the outermost exochorion, outer endochorion, a layer of vertical pillars between the irregular space of aeropyles (star), inner endochorion, innermost chorionic layer, and wax layer (Figure 2).

A key to simplify the identification of egg of *L. cuprina* from the other forensically important species in Thailand was summarized for morphological comparison as follows (Table 1).

The eggshell structure of *L. cuprina* conforms to general ultrastructural patterns shown by SEM micrographs of blow fly species (Kitching 1976; Erzinclioglu 1989; Liu and Greenberg 1989; Peterson and Newman 1991; Greenberg and Singh 1995; Sukontason et al. 2004b), by bearing the dorsal plastron, micropyle and polygonal pattern of chorionic sculpture. The relatively wide plastron and slight bifurcation of the plastron

**Table 1.** Egg identification key.

1	Wide plastron, occupying more than half of egg width	2
1	Narrow plastron, occupying less than half of egg width (Figure 1A)	3
	Length < 0.6 mm; plastron area flanked with prominent flanges (Figure 3)	<i>Megaselia scalaris</i> (Family Phoridae)
2	Length > 0.6 mm; plastron area with polygonal pattern; hatching line upright (Figure 4)	<i>Synthesiomyia nudiseta</i> (Family Muscidae)
	Plastron width less than half of egg (Figure 1A)	4
3	Plastron narrow and lengthen almost the entire length (Figure 5); plastron area near micropyle as "Y-shape" (Figure 6)	<i>Chrysomya megacephala</i> or <i>Chrysomya rufifacies</i> (Family Calliphoridae)
4	Length > 1.16 mm; hatching line upright or slightly swollen	5
4	Length < 1.16 mm; hatching line clearly upright (Figure 1A, 1B)	<i>Lucilia cuprina</i> (Family Calliphoridae)
5	Boundary of polygonal pattern on chorion swollen and distinct (Figure 7)	<i>Chrysomya nigripes</i> (Family Calliphoridae)
5	Boundary of polygonal pattern on chorion smooth and indistinct (Figure 8)	<i>Musca domestica</i> (Family Muscidae)



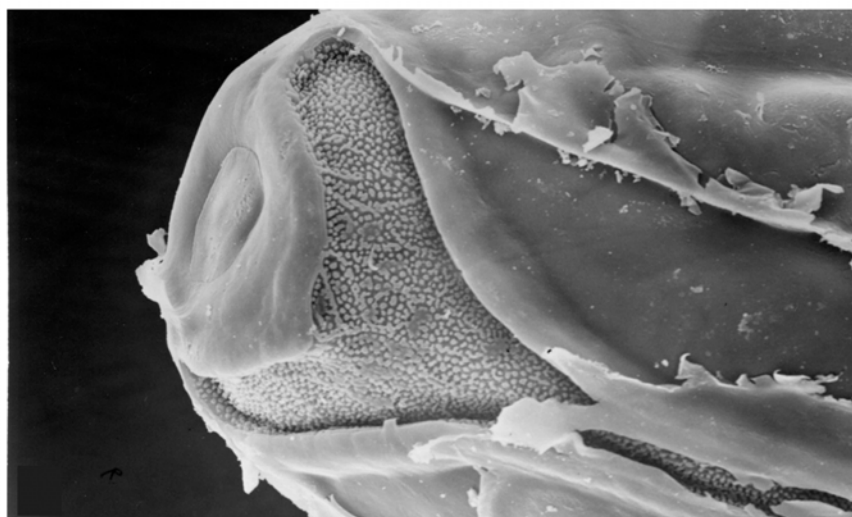
**Figure 3.** Scanning electron micrograph of egg of *M. scalaris*. Whole egg showing the wide plastron region flanked with prominent flanges.



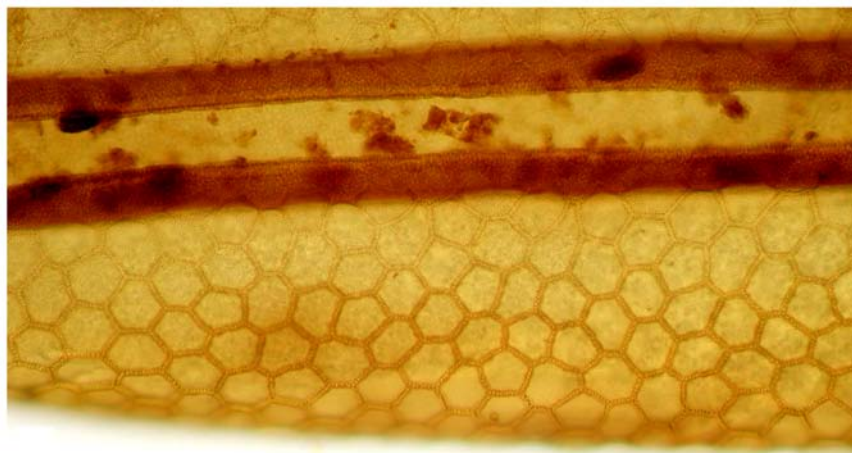
**Figure 4.** Egg of *S. nudiseta* after being stained with 1% potassium permanganate solution for 1 min. Whole egg showing wide plastron area with polygonal pattern and upright hatching line.



**Figure 5.** Egg of *C. megacephala* after being stained with 1% potassium permanganate solution for 1 min. Whole egg showing narrow plastron area lengthening almost the entire length.



**Figure 6.** Scanning electron micrograph of egg of *C. megacephala* displaying “Y-shape” of plastron area near micropyle.



**Figure 7.** Egg of *C. nigripes* after being stained with 1% potassium permanganate solution for 1 min. Lower half egg showing swollen of the boundary of polygonal pattern on chorion and upright hatching line (dark brown lines).



**Figure 8.** Egg of *M. domestica* after being stained with 1% potassium permanganate solution for 1 min. Whole egg showing wide plastron area almost the entire length and slightly swollen hatching line.

near the micropyle of *L. cuprina* eggs are similar to that found in *Lucilia* species, e.g., *Phaenicia sericata*, *Phaenicia coeruleiviridis* and *Phaenicia illustris* (Greenberg and Singh 1995). These authors indicated the difficulty in differentiating between them, however, a slight bifurcation of the plastron near the micropyle of *L. cuprina* differed from the marked bifurcation of *L. ibis* (Greenberg and Kunich 2002). Hence, this feature would be partially useful in future for differentiating eggs of the *Lucilia* species that exist in Thailand and other countries in Asia, e.g. *L. porphyrina*, *L. papuensis*, *L. sinensis*, *L. bismarckensis*, *L. calviceps*, *L. fumicosta*, *L. hainanensis* and *L. salazarae* (Tumrasvin et al. 1979; Kurahashi et al. 1997; Kurahashi and Magpayo 2000; Kurahashi 2001).

The chorionic ultrastructure has been used as one of the taxonomic characters for differentiating between fly eggs (Kitching 1976; Feliciangeli et al. 1993; Colwell et al. 1999; Sukontason et al. 2004a). The indistinct boundary of the hexagonal pattern of *L. cuprina* presented herein, used for incorporation with other features, may help to differentiate eggs from other *Lucilia* species.

Our TEM observation on *L. cuprina* eggs corresponds with the multi-layered eggshell of blow flies, e.g. *Lucilia sericata*, *Calliphora erythrocephala* (Hinton 1960), *Cochliomyia hominivorax* (Peterson and Newman 1991) and *Chrysomya nigripes* (Sukontason et al. 2004b). The large perforation of aeropyles in the middle layer and wide plastron enable the efficient distribution system of gases for the developing oocytes (Hinton 1960; Margaritis 1985; Ma et al. 2002).

## Acknowledgements

We thank two anonymous reviewers, and the editor, for helpful comments on the manuscript. This work received support from the Faculty of Medicine Research Fund, Chiang Mai University.

## References

- Anderson GS. 1999. Wildlife forensic entomology: determining time of death in two illegally killed black bear cubs. *Journal of Forensic Science* 44: 856-859.
- Anderson GS. 2004. Determining time of death using blow fly eggs in the early postmortem interval. *International Journal of Legal Medicine* 118: 240-241.
- Byrd JH, Castner JL. 2001. Insects of forensic importance. In: Byrd JH, Castner JL, editors. *Forensic Entomology: The Utility of Arthropods in Legal Investigations*. 43-79, Florida: CRC Press.
- Colditz IG, Watson DL, Eisemann CH, Tellam RL. 2002. Production of antibodies to recombinant antigens from *Lucilia cuprina* following cutaneous immunisation of sheep. *Veterinary Parasitology* 104: 345-350.
- Colwell DD, Baird CR, Lee B, Milton K. 1999. Scanning electron microscopy and comparative morphometrics of eggs from six bot fly species (Diptera: Oestridae). *Journal of Medical Entomology* 36: 803-810.
- Erzincliglu YZ. 1989. The value of chorionic structure and size in the diagnosis of blowfly eggs. *Medical and Veterinary Entomology* 3: 281-285.
- Feliciangeli MD, Castejon OC, Limongi J. 1993. Egg surface ultrastructure of eight New World phlebotomine sand fly species (Diptera: Psychodidae). *Journal of Medical Entomology* 30: 651-656.
- Goff ML. 2000. *A Fly for the Prosecution. How Insect Evidence Helps Solve Crimes*. Cambridge, MA: Harvard University Press.
- Greenberg B, Kunich JC. 2002. *Entomology and the Law. Flies as Forensic Indicators*. Cambridge, United Kingdom: Cambridge University Press.
- Greenberg B, Singh D. 1995. Species identification of calliphorid (Diptera) eggs. *Journal of Medical Entomology* 32: 21-6.
- Greenberg B, Szyska ML. 1984. Immature stages and biology of fifteen species of Peruvian Calliphoridae (Diptera). *Annals of the Entomological Society of America* 77: 488-517.
- Haskell NH. 1990. Procedures in the entomology laboratory. In: Catts EP, Haskell NH, editors. *Entomology & Death: A Procedural Guide*. 111-123, Clemson, SC: Joyce's Print Shop Inc.
- Hinton HE. 1960. Plastron respiration in the eggs of blowflies. *Journal of Insect Physiology* 4: 176-183.
- Kitching RL. 1976. The immature stages of the Old-World screw-worm fly, *Chrysomya bezziana* Villeneuve, with comparative notes on other Australasian species of *Chrysomya*. *Bulletin of Entomological Research* 66: 195-203.
- Kurahashi H. 2001. The blow flies recorded from Sri Lanka, with description of two new species (Diptera, Calliphoridae). *Japanese Journal of Systematic Entomology* 7: 241-254.
- Kurahashi H, Benjaphong N, Omar B. 1997. Blow flies (Insecta: Diptera: Calliphoridae) of Malaysia and Singapore. *The Raffles Bulletin of Zoology* (Suppl 5): 1-88.

- Kurahashi H, Magpayo FR. 2000. Blow flies (Insecta: Diptera: Calliphoridae) of the Philippines. *The Raffles Bulletin of Zoology* (Suppl 9): 1-78.
- Liu D, Greenberg B. 1989. Immature stage of some flies of forensic importance. *Annals of the Entomological Society of America* 82: 80-93.
- Lord WD. 1990. Case histories of the use of insects in investigations. In: Catts, EP, Haskell NH, editors. *Entomology and Death; A Procedural Guide*. 9-37, Clemson, SC: Joyce's Print Shop Inc.
- Ma PWK, Baird S, Ramaswamy SB. 2002. Morphology and formation of the eggshell in the tarnished plant bug, *Lygus lineolaris* (Palisot de Beauvois) (Hemiptera: Miridae). *Arthropods Structure and Development* 31: 131-146.
- Margaritis LH. 1985. Structure and physiology of the eggshell. In: Kerkut GA, Gilbert LI, editors. *Comprehensive Insect Physiology, Biochemistry and Pharmacology*. Vol. I. *Embryogenesis and Reproduction*. 153-230, Oxford: Pergamon Press.
- Peterson RD, Newman Jr SM. 1991. Chorionic structure of the egg of the screwworm *Cochliomyia hominivorax* (Diptera: Calliphoridae). *Journal of Medical Entomology* 28: 152-160.
- Smith KGV. 1986. *A Manual of Forensic Entomology*. London: British Museum of Natural History.
- Stevens J, Wall R. 1997. The evolution of ectoparasitism in the genus *Lucilia* (Diptera: Calliphoridae). *International Journal for Parasitology* 27: 51-59.
- Sukontason K, Sukontason KL, Piangjai S, Boonchu N, Kurahashi H, Hope M, Olson JK. 2004a. Identification of forensically important fly eggs using a potassium permanganate staining technique. *Micron* 35: 391-395.
- Sukontason K, Sukontason KL, Boonchu N, Chaiwong T, Piangjai S. 2004b. Ultrastructure of eggshell of *Chrysomya nigripes* Aubertin (Diptera: Calliphoridae). *Parasitology Research* 93: 151-154.
- Tellam RL, Eisemann CH, Vuocolo T, Casu R, Jarmey J, Bowles V, Pearson R. 2001. Role of oligosaccharides in the immune response of sheep vaccinated with *Lucilia cuprina* larval glycoprotein, peritrophin-95. *International Journal for Parasitology* 31: 798-809.
- Tumrasvin W, Kurahashi H, Kano R. 1979. Studies on medically important flies in Thailand. VII. Report on 42 species of calliphorid flies, including the taxonomic keys (Diptera: Calliphoridae). *Bulletin of Tokyo Medical and Dental University* 26: 243-272.
- Zumpt F. 1965. *Myiasis in Man and Animals in the Old World*. London, UK: Butterworths.