

Transcriptional Regulation of Selenoprotein W by MyoD during Early Skeletal Muscle Differentiation*

Received for publication, June 8, 2010, and in revised form, October 12, 2010 Published, JBC Papers in Press, October 18, 2010, DOI 10.1074/jbc.M110.152934

Ok Jeong Noh[‡], Yong Hwan Park[‡], Youn Wook Chung^{§1}, and Ick Young Kim^{‡2}

From the [‡]Laboratory of Cellular and Molecular Biochemistry, School of Life Sciences and Biotechnology, Korea University, Anam-dong, Seongbuk-gu, Seoul 136-701, Korea and the [§]Laboratory of Biochemistry, NHLBI, National Institutes of Health, Bethesda, Maryland 20892

Selenoprotein W (SelW) is expressed in various tissues, but it is especially high in the skeletal muscle of mammals. Such tissue-specific protein expression implies regulation by a tissue-specific factor. In this study, we investigated SelW expression during myogenic C2C12 cell differentiation using RT-PCR, quantitative PCR, and Western blot analysis. Both the protein and mRNA levels of SelW were increased during C2C12 cell differentiation, particularly during the early stage. Sequence analysis of the *SelW* promoter revealed four putative E-boxes, E1, E2, E3, and E4, which are known binding sites for MyoD, a myogenic transcriptional factor. Luciferase reporter assay showed that E1 and E4 were crucial for MyoD-dependent promoter activity. Using EMSA analysis, we observed that MyoD bound directly to E1 but not to E4, even though E4 mutation reduced *SelW* promoter activity in the luciferase reporter assay. Binding of MyoD to E1 was further investigated by ChIP assay. These results suggest that the *SelW* gene was activated by the binding of MyoD to a specific E-box during early skeletal muscle differentiation.

Selenoprotein W (SelW) is the smallest selenoprotein identified to date that contains the canonical amino acid selenocysteine (Sec).³ SelW is known to have an antioxidant effect on cells (1–3), a common feature of many selenoproteins due to the presence of Sec encoded by the stop codon UGA. Only a few selenoproteins, such as deiodinases and selenoprotein N (SelN), are known to lack this common feature (4). It was also found that 14-3-3 protein is a SelW-interacting protein with an unusual manner of redox regulation (5). NMR spectroscopy has been used to analyze the interaction of SelW with 14-3-3 protein as well as the structure of SelW containing Cys instead of Sec (6). SelW expression is increased by the knock-down of SelT in mouse fibroblast NIH 3T3 cells without any effect on the expression of other major selenoproteins such as

thioredoxin reductase 1 (TrxR1 and Txnrd1), glutathione peroxidase 1 (Gpx1), glutathione peroxidase 4 (Gpx4), or selenoprotein 15 (Sep15) (7). This result implies that SelW might play a compensatory function for SelT.

SelW was first identified as a deficient protein in lambs suffering from white muscle disease, a selenium-responsive myopathy in livestock (8). SelW is expressed ubiquitously in various tissues, but it is specifically high in the skeletal muscle and brain of mammals (2, 9, 10). Tissue-specific protein expression implies regulation by a tissue-specific factor that plays a significant role in the tissue. Using Northern blot analysis, SelW expression was found to be regulated during C2C12 cell differentiation (2).

The expression of most proteins is regulated at the transcriptional level by mechanisms controlling complex transcriptional initiation networks. Therefore, elucidating the regulation of selenoprotein expression at the transcriptional level is vital to understanding how selenoproteins respond to environmental stimuli. Compared with the total number of selenoproteins actually identified, the number of studies focusing on the transcriptional regulation of selenoproteins is very low. Nonetheless, TrxR1, which is abundant in most tissues, is transcriptionally activated via binding of NF-E2-related factor-2 (Nrf2) to the antioxidant-responsive element in its promoter upon cadmium induction (11). Examination of point mutations and deletion fragments of FoxO-responsive elements in the promoter of selenoprotein P (SeP), a key selenium supplier produced in the liver, found that promoter activity and expression are enhanced by FoxO1a (forkhead box, class O) transcription factor in hepatoma cells (12). Selenoprotein S (SelS), a newly identified endoplasmic reticulum membrane protein responsive to endoplasmic reticulum stress (13, 14), contains putative binding sites for nuclear factor- κ B as well as an endoplasmic reticulum stress-response element that increases expression and promoter activity upon activation by the pro-inflammatory cytokines TNF- α and IL-1 β and the endoplasmic reticulum stress agents tunicamycin and thapsigargin (15).

There are few reports on the transcriptional regulation of *SelW*. It has been shown that metal-response element (MRE) is present in the *SelW* promoter, which is activated by exposure to copper and zinc ions but not cadmium (16). An *in vitro* binding assay found that a transcription factor, specificity protein 1 (Sp1), bound to a consensus Sp1 sequence in the *SelW* promoter as well as to the MRE sequence (17). In addition, another group observed the induction of the mouse

* This work was authored, in whole or in part, by National Institutes of Health staff. This work was funded by Korea Research Foundation Grant from the Korean Government (MOEHRD) KRF-2005-070-C00086 (to I. Y. K.) and in part by a Korea University grant.

¹ Present address: Pulmonary-Critical Care Medicine Branch, NHLBI, National Institutes of Health, Bldg. 10, 9000 Rockville Pike, Bethesda, MD 20892.

² To whom correspondence should be addressed: Laboratory of Cellular and Molecular Biochemistry, School of Life Sciences and Biotechnology, Korea University, Anam-dong, Seongbuk-gu, Seoul, 136-701, Korea. Tel./ Fax: 82-2-3290-3449; E-mail: ickkim@korea.ac.kr.

³ The abbreviations used are: Sec, selenocysteine; MRE, metal response element; MRFs, myogenic regulatory factors; MCK, muscle creatine kinase; DM, differentiation medium; GM, growth medium; HS, horse serum.

SelW promoter by cadmium in a liver-specific metal-responsive transcription factor 1 (MTF-1) knock-out mouse model (18). In that particular study, MTF-1 was identified as a factor playing an important role in the regulation of *SelW* expression in liver-specific MTF-1 knock-out mice. MTF-1 is a zinc finger protein involved in the response to various stress stimuli, such as heavy metals and oxidative stress, which acts by binding to MRE consensus sequences in the promoters of its target genes. According to a recent publication, MTF-1 targets and represses the mRNA expression of *SelH* and *Txnrd2* by binding to *cis*-acting MREs present in the coding regions (19). Taken together, MTF-1 might act as an activator or repressor of selenoprotein expression via binding to MREs located in the promoters or coding regions of its target genes.

To date, little is known about the transcriptional regulatory factors associated with tissue-specific *SelW* expression. Specifically, there is only limited information on the factors associated with transcriptional regulation of *SelW* in skeletal muscle, the major expression tissue. Skeletal muscle cells, which are derived from somites during embryogenesis, form precisely orchestrated physiological networks (20, 21). Myogenic precursor cells divide into proliferating myoblasts that then differentiate into multinucleated myotubes during cell elongation, alignment, and fusion. Myogenic regulatory factors (MRFs) composed of *Myf5*, *MyoD*, myogenin, and *MRF4* play essential roles in skeletal muscle development. *Myf5*, *MyoD*, and *MRF4* serve as myogenic determination factors that control the fate of proliferating myoblasts derived from myogenic precursor cells. The activation of myogenin and *MRF4* is responsible for the differentiation of myotubes from proliferating myoblasts. The basic helix-loop-helix transcription factor *MyoD* is a member of the MRF family (22). Since its discovery, *MyoD* has been characterized as a key regulatory factor that controls the expression of many muscle-specific genes, such as muscle creatine kinase (*MCK*), myogenin, myosin alkaline light chains (*MLC1*), and *MyoD* itself during myogenesis (23–26). *MyoD* also regulates gene expression through the recognition of a consensus *cis*-acting element, called an E-box (CANNTG), which is located in the promoters or enhancers of its target genes.

As described above, some reports have achieved transcriptional regulation of *SelW* in C2C12 myoblast cells by using *cis*-acting elements with corresponding *trans*-acting factors to control *SelW* promoter activity. However, these reports are mainly limited to MRE sequences within the *SelW* promoter region between –40 and –20 bp. In this study, we investigated the tissue-specific regulation of *SelW* expression at the transcriptional level during skeletal muscle differentiation in mouse C2C12 cells, which are well established in muscle development (27, 28). The results show that *SelW* expression was up-regulated during the differentiation of C2C12 myoblasts into myotubes. Four putative E-boxes were identified in the *SelW* promoter, and the *SelW* promoter was activated by the binding of *MyoD* to at least one of these putative E-boxes during differentiation. Therefore, *MyoD* was required for transcriptional activation of *SelW* via putative E-boxes during skeletal muscle differentiation.

EXPERIMENTAL PROCEDURES

Cell Culture—Mouse skeletal muscle C2C12 (CRL-1772) myoblast and nonmyogenic mouse fibroblast C3H10T1/2 (CCL-226) cells were purchased from the American Type Culture Collection. C2C12 cells were cultured to ~50% confluence in growth medium (GM) consisting of Dulbecco's modified Eagle's medium (DMEM; Invitrogen) supplemented with 10% fetal bovine serum (FBS; Invitrogen). To induce differentiation, the cells were cultured to ~100% confluence in GM, which is denoted as D0 in this study, followed by exchange with differentiation medium (DM) consisting of DMEM supplemented with heat-inactivated 2% horse serum (HS). DM was exchanged every day for the 5 days of culturing. To examine the effect of selenium status on *SelW* mRNA expression, confluent C2C12 cells at D0 were maintained in DMEM supplemented with different serum concentrations or in medium containing various levels of sodium selenite up to the indicated time point. AIM-V (AIM; Invitrogen) was also used as serum-free medium. C3H10T1/2 cells were grown in GM containing Basal Medium Eagle (JBI) supplemented with 10% FBS. For C3H10T1/2 differentiation, cells were transfected at ~50% confluence with plasmid expressing *MyoD*, replaced with DM containing Basal Medium Eagle supplemented with 2% HS at ~100% confluence, and then maintained. All culture media were supplemented with 100 units/ml penicillin, 100 μ g/ml streptomycin, and 0.25 μ g/ml amphotericin B (Invitrogen), and the cells were maintained at 37 °C under 5% CO₂ atmosphere.

Plasmids—*SelW* promoter fragments were generated by PCR using genomic DNA extracted from rat muscle, as described previously (16), and then cloned into pGL3-basic vector (Promega) to construct *SelW* promoter luciferase reporter plasmids. The resulting constructs, –973*SelW*/Luc and –240*SelW*/Luc, contained *SelW* promoter regions from –973 and –240 to +32 bp, respectively. Using a QuikChange site-directed mutagenesis kit (Stratagene), E-box mutants of –973*SelW*/Luc were constructed in which the conserved E-box sequence CANNTG was converted to CGNNAG, as described previously (29). Myogenesis-dependent luciferase plasmid *MCK*-Luc was a kind gift from Prof. Da-Zhi Wang (University of North Carolina) and 4RSV-Luc a kind gift from Prof. Andrew Lassar (Harvard Medical School) and Prof. Makoto Inui (Yamaguchi University School of Medicine), and all pcDNA3 plasmids expressing MRFs and MEF2 family proteins were kindly provided by Prof. Young-Gyu Ko (Korea University). All primers used for the construction of plasmids are represented in Table 1. Enzyme restriction sites for the cloning of *SelW* promoter plasmids were *Kpn*I for the forward primer and *Hind*III for the reverse primer, as underlined in the table. The sequences of all DNA constructs were confirmed by sequencing.

RT-PCR and Quantitative PCR—Total RNA was isolated from C2C12 cells at the indicated time points during differentiation using TRIzol reagent (Invitrogen) according to the manufacturer's protocol. One microgram of total RNA was reverse-transcribed to cDNA using SuperScriptaseTM III reverse transcriptase and oligo(dT) (Invitrogen) in a 50- μ l total

TABLE 1
Oligonucleotide sequences for PCR and EMSA used in this study
F indicates forward, and R indicates reverse.

Target gene (product size)	Primer (5' → 3')
Cloning for rat <i>SelW</i> promoter	
-973 <i>SelW</i> /Luc, F	GCGCGGTACCGCCTTGCCTTCTCCTAGGC
-240 <i>SelW</i> /Luc, F	GCGCGGTACCGAAGGGACAGCGAGGGGC
+32, R	CCCGAAGCTTGCACAAAGCGAGGACCCG
Site-directed mutagenesis for rat <i>SelW</i> promoter	
E1m, F	GATTTTTTGTGTTTGTAGACGACAGCTCTTGTAGCCAG
E1m, R	CTGGGCTACAGAGCTGTCTCTCAAACAAAAATC
E2m, F	CTTCAGTCTCCTCTTCCCGAAGCTGGGATTAGAGGC
E2m, R	GCCTCTAATCCAGCTTTTCGGGAAGAGGACTGAAG
E3m, F	GGCAAGTCTCTGCGCCGACAGCGTACAGCCCAAGC
E3m, R	CGTTTGGGCTGTAGCGCTTTCGGCGCAGAGGACTTGGC
E4m, F	GGAGGAGATCCATCCCGATAGTCTCCCGATGCGTG
E4m, R	CACGCATCGGGAGACTATCGGGATGGATCTCTCTCC
Gene amplification	
<i>SelW</i> , F (232 bp)	GTGTATTGTGGAGCTTGAGGC
<i>SelW</i> , R	CCAAGGCAGCTTTGATGGCGG
<i>MyoD</i> , F (482 bp)	CATCCGCTACATCGAAGGTC
<i>MyoD</i> , R	TCCGATTTGGGGTTTGAGCC
<i>p21</i> , F (295 bp)	GTCCAATCCTGGTGTAGTCC
<i>p21</i> , R	CAGGGCAGAGGAAGTACTGG
<i>Myogenin</i> , F (430 bp)	AGGAGAGAAAGATGGAGTCCAGAG
<i>Myogenin</i> , R	TAACAAAAGAAGTACCCCAAGAG
<i>MyHC</i> , F (625 bp)	AGAAGGAGGAGGCAACTTCTG
<i>MyHC</i> , R	ACATACTCATTTGCCGACCTTG
<i>TrxR1</i> , F (876 bp)	TGGATTTTGTGCACACCGACTCC
<i>TrxR1</i> , R	CGATGGCGTAGATGTAAGGCAC
<i>Hprt1</i> , F (225 bp)	GCAAACTTTGCTTTCCCTGG
<i>Hprt1</i> , R	GCCTTGTATTTGGCTTTTCC
<i>Gapdh</i> , F (369 bp)	CATGACAACTTGGCATTGTG
<i>Gapdh</i> , R	GTTGAAGTCCGAGGAGACAAC
EMSA	
E1	GTTTTGTAGACAACCTGCTCTTG
E2	CTCTTCCCAATGCTGGGAT
E3	CTCTGCGCCAACTGCGCTACAGCC
E4	GATCCATCCCAATTGTCTCCCGAT
MCK	CCCCCAACACCTGCTGCCTGA
ChIP	
E1, F	CCTCGAACCCACAGAGATTTT
E1, R	GAAGAGGAGACTGAAGGATTG
<i>Gapdh</i> , F	AGCTACTCGCGCTTTTACG
<i>Gapdh</i> , R	TCACCTGGCACTGCACAAG

reaction volume, followed by PCR. For each exponential amplification, PCR was performed for 20–28 cycles, after which each product was visualized by ethidium bromide staining following 1.2% agarose gel electrophoresis or 2% in the case of the *SelW*, *p21*, and hypoxanthine phosphoribosyltransferase 1 (*Hprt1*) genes. All specific primers are shown in Table 1. Real time PCR was performed to measure the expression of *SelW*. One hundred nanograms of *SelW* cDNA and 150 ng of *Hprt1* cDNA were amplified with LightCycler 480 SYBR Green I Master (Roche Diagnostics). Amplification included a denaturation step at 95 °C for 5 min, followed by 45 cycles at 95 °C for 10 s, 55 °C for 15 s, and 72 °C for 20 s. To verify amplification specificity, melting curves of the PCR products of each primer set were analyzed. The specific primers used were identical to those used in RT-PCR. Each experiment was prepared in triplicate, and data are represented as means ± S.D. of four independent experiments.

Western Blotting and Antibodies—C2C12 cells were washed twice with PBS, harvested by scraping in lysis buffer (50 mM Tris, pH 7.4, 150 mM NaCl, 1% Nonidet P-40, 0.1% SDS, 1 mM EDTA, 1 mM phenylmethylsulfonyl fluoride (PMSF), 5 μg/ml aprotinin, 5 μg/ml leupeptin, 3 mM dithiothreitol (DTT), 1 mM NaF, 1 mM Na₃VO₄), and incubated on ice about for 30 min with periodic vortexing. After centrifugation, the protein

concentration was determined by Bradford assay (Sigma) with bovine serum albumin as a standard. To detect protein expression, 30 μg of total protein was separated by 8–15% SDS-PAGE, except for *SelW*, in which case 60 μg of total protein was analyzed by 12% NuPAGE (Invitrogen). Protein was transferred to polyvinylidene difluoride (PVDF; Millipore) membranes, blocked for 1–2 h with 5% skim milk, and then probed overnight with primary antibodies as follows: anti-MyoD, anti-p21, and anti-myogenin from Pharmingen; anti-MyHC from Sigma; anti-phosphohistone H3 from Upstate; anti-tubulin from AbFrontier; and rabbit anti-TrxR1 kindly provided by Prof. Seung-Rock Lee (Chonnam National University Medical School). To observe *SelW* expression, we used rabbit polyclonal anti-*SelW* raised against the peptide HS-KKKGDGYVDTESK (synthesized and purified by Invitrogen). HRP-conjugated secondary antibodies (anti-mouse from Calbiochem and anti-rabbit from Invitrogen) were incubated with the membranes for 1 h, followed by visualization using SuperSignal West Pico chemiluminescent substrate (Pierce).

Transfections—To estimate the activity of the *SelW* promoter, C2C12 cells were seeded onto a 60-mm total area at ~30% confluence, followed by transfection with 1 μg of *SelW* firefly luciferase plasmids and 0.15 μg of control *Renilla* luciferase plasmid pRL-TK (Promega) using Lipofectamine 2000 transfection reagent (Invitrogen) according to the manufacturer's recommendations. Following 6 h of transfection, C2C12 cells were cultured in GM for 1 day and then harvested for the measurement of *SelW* promoter activity in proliferating myoblasts. To measure *SelW* promoter activity in differentiating myotubes, cells were cultured in GM up to ~100% confluence, followed by transfer into DM for 1 day to induce differentiation. C3H10T1/2 cells were transfected with 0.3 μg of *SelW* luciferase plasmids, the same amount of MRFs or MEF2 family of transcription factors, as well as 0.15 μg of pRL-TK. The cells were cultured in GM and then harvested for Dual-Luciferase reporter assay. To observe further the effect of MyoD on *SelW* promoter activity during muscle differentiation, MyoD-transfected C3H10T1/2 cells were grown in GM up to ~100% confluence, switched to DM, and then harvested after 1 day of culture.

Dual-Luciferase Reporter Assay—*SelW* firefly luciferase activity was determined using the Dual-Luciferase reporter assay system (Promega) with a Junior LB 9509 luminometer (Berthold Technologies) according to the manufacturer's instructions with minor modification. Transfected cells were washed twice with PBS and lysed with 1× passive lysis buffer (Promega). Ten microliters of cell lysates was added to 50 μl of luciferase assay reagent II, followed by measurement of firefly activity for 10 s. Fifty microliters of Stop and Glo reagent was also added to quench firefly activity, after which *Renilla* activity was measured for 10 s. To control transfection efficiency, firefly activity was normalized to *Renilla* activity. Each experiment was prepared in triplicate, and data are expressed as means ± S.D. of three to four separate experiments.

MyoD Knockdown with siRNA—MyoD siRNA duplexes against mouse MyoD, designated as siMyoD in this study, were designed and synthesized by Invitrogen (Stealth RNAi).

Two target sequences for siMyoD were as follows: siMyoD 1, 5'-GACGACTTCTATGATGATCCGTGTT-3', siMyoD 2, 5'-CCAATGCGATTTATCAGGTGCTTTG-3'. Stealth RNAi negative control duplexes (Invitrogen) served as a negative control. To determine the most effective target sequence for the two siMyoDs, C2C12 myoblasts cultured in 60-mm dishes were transiently transfected with 50 nM of each siRNA using Lipofectamine 2000 transfection reagent. After 6 h of transfection, the cells were maintained in GM up to ~90% confluence and then transferred into DM for 1 day to induce differentiation. The expression levels of MyoD protein and mRNA were analyzed in C2C12 cells by Western blotting and RT-PCR, respectively.

EMSA—Nuclear extracts were prepared from C2C12 myotubes cultured in DM for 1 day. Briefly, C2C12 cells were washed twice with ice-cold PBS, lysed in buffer A (10 mM Hepes, pH 7.8, 1.5 mM MgCl₂, 10 mM KCl, 0.5 mM DTT, 0.5 mM PMSF, 1 μg/ml leupeptin, 1 μg/ml aprotinin), incubated on ice for 15 min, and then centrifuged at 5,000 rpm for 5 min. The pellet was then resuspended in buffer B (20 mM Hepes, pH 7.8, 1.5 mM MgCl₂, 0.5 mM DTT, 25% glycerol, 420 mM NaCl, 0.2 mM EDTA, 0.5 mM PMSF, 1 μg/ml leupeptin, 1 μg/ml aprotinin), incubated on ice for 40 min with periodic vortexing, and then centrifuged at 13,000 rpm for 15 min. The supernatants were used as nuclear extracts for DNA binding assays. Sequences of the oligonucleotide sense strands used in the EMSA are listed in Table 1 (E-box is underlined). To construct radiolabeled probes, oligonucleotides were annealed, end-labeled with [γ -³²P]dATP using T4 polynucleotide kinase (Takara), and then purified with MicroSpin G-25 columns (GE Healthcare). A total of 30 μg of nuclear proteins along with 1 μg of poly(dI-dC)·poly(dI-dC) were incubated in 1× binding buffer (15 mM Hepes, pH 7.8, 1 mM EDTA, 40 mM KCl, 0.5 mM DTT, 5% glycerol) for 20 min at room temperature, followed by the addition of radiolabeled, double-stranded oligonucleotide probes. After incubation for 20 min, the samples were resolved by 5% nondenaturing PAGE with 0.5× TBE (1× TBE is 45 mM Tris borate and 1 mM EDTA) run at 200 V for 2 h at room temperature. The resulting gel was dried, and the radioactive bands were developed using a Fuji BAS 2500 phosphorimager (Fujifilm Corp.). For supershift assays, reaction mixtures were incubated with 5 μg of anti-MyoD prior to the addition of labeled probes. For competition experiments, various amounts of unlabeled oligonucleotide competitors were added (10-, 50-, and 100-fold excess) to the reaction mixtures before incubation with the labeled probes.

ChIP—For ChIP assay, C3H10T1/2 cells grown in 100-mm culture dishes were co-transfected with the expression plasmids HA-MyoD and *SelW* promoter -973*SelW*/Luc. Following transfection, the cells were maintained in GM up to ~100% confluence and then transferred into DM for 1 day, after which ChIP assay was performed. To isolate cross-linked protein-DNA complexes, a ChIP assay kit (Upstate) was used according to the manufacturer's instructions with minor modification. Briefly, transfected C3H10T1/2 cells were cross-linked by the direct addition of 1% formaldehyde to the culture medium, followed by incubation for 10 min at 37 °C.

The cross-linking reaction was stopped by the addition of 125 mM glycine. The cells were washed three times with ice-cold PBS, collected, and then resuspended in SDS lysis buffer (1% SDS, 10 mM EDTA, 50 mM Tris, pH 8.0) containing protease inhibitors (1 mM PMSF, 2 μg/ml aprotinin, 2 μg/ml leupeptin). Sonication was then performed to shear 200–1000-bp DNA fragments. Precleared chromatin was immunoprecipitated using 2 μg of mouse monoclonal anti-HA antibody (Santa Cruz Biotechnology) per sample. For input DNA, 1% of the sample was removed prior to immunoprecipitation (IP). Following IP and vigorous washing, reverse cross-linking and DNA purification were performed according to the kit protocol. Immunoprecipitated fragments were analyzed by PCR, and the primers used are presented in Table 1.

RESULTS

***SelW* Expression Is Up-regulated during Differentiation of Myogenic C2C12 Cells into Myotubes**—Using the mouse skeletal muscle cell line C2C12, we analyzed the expression of *SelW* during myogenic differentiation. The C2C12 cell line is a well established *in vitro* model of muscle development. Fig. 1A represents the morphological changes C2C12 cells undergo during differentiation under culture conditions. To induce differentiation, proliferating C2C12 myoblasts were grown up to ~50% confluence in GM, after which they were maintained in the same medium up to ~100% confluence (D0). Myogenic differentiation was then induced in confluent cells upon exchange of GM with DM (D1). Multinucleated C2C12 myotubes were observed 3 days after initial differentiation (D3), after which the cells were further cultured for 5 days to obtain full differentiation (D5). At each indicated time point, we measured the expression of *SelW* mRNA by RT-PCR analysis. As shown in Fig. 1B, the low level of *SelW* mRNA in proliferating C2C12 myoblasts increased from D0 and reached a maximum at D1. Thereafter, the level of mRNA expression was maintained with only a slight reduction. The level of *SelW* protein was also examined by Western blot analysis using polyclonal *SelW* peptide antibody. The pattern of *SelW* protein expression was consistent with that of mRNA expression (Fig. 1, D and E). Specificity of the polyclonal antibody was confirmed by Western blot analysis using C2C12 cells transfected with wild-type *SelW* plasmid and Sec mutant *SelW*-Cys plasmid (data not shown). Myogenic differentiation was monitored by measuring the mRNA and protein expression levels of well known muscle-specific markers such as MyoD, p21, myogenin, and MyHC. Phosphohistone H3 (Pho-H3), a cell proliferation marker, was detected in C2C12 myoblasts cultured in GM, but its expression disappeared at D0. Therefore, confluent C2C12 cells at D0 had already begun the process of cell cycle arrest and differentiation. It is known that the expression of *TrxR1* mRNA decreases upon the differentiation of C2C12 myoblasts to myotubes (30). Accordingly, we observed that the mRNA and protein expression of *TrxR1* slightly and gradually reduced during the differentiation process (Fig. 1, B and D). The expression of *SelW* mRNA was further analyzed quantitatively by real time PCR (Fig. 1C). Similar to the results obtained by RT-PCR, the expression of *SelW* mRNA was rapidly elevated at the early stage of differentia-

Transcriptional Regulation of *SelW* in Myogenesis

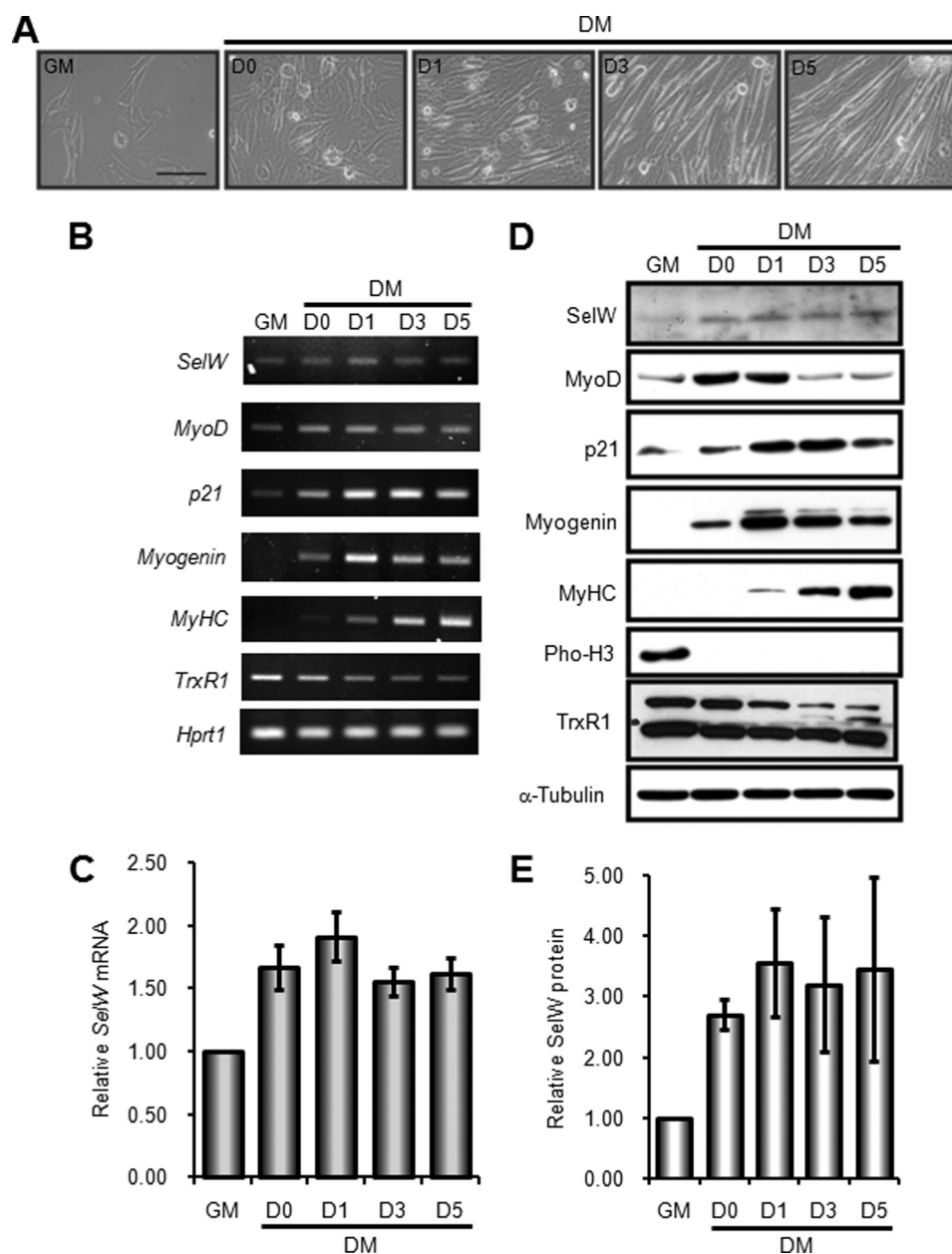


FIGURE 1. *SelW* expression is up-regulated in the early stage of C2C12 cell differentiation. *A*, phase-contrast microscopic images of proliferating and differentiating C2C12 cells cultured under the experimental conditions of this study. Proliferating C2C12 myoblasts were cultured in GM up to ~50% confluence. To induce differentiation, C2C12 myoblasts were maintained in the same medium up to ~100% confluence (D0). After exchanging the culture medium with DM, differentiating C2C12 cells were observed at 1, 3, and 5 days of differentiation (D1, D3, and D5). Bar, 100 μ m. *B*, RT-PCR analysis of *SelW* and muscle-specific marker genes during C2C12 cell differentiation. Total RNA was isolated from C2C12 cells at the indicated time points and subjected to reverse transcription, followed by PCR with specific primers. *Hprt1* was used as a loading control. A representative result of three independent experiments is shown. *C*, real time PCR analysis for the quantification of *SelW* mRNA expression during C2C12 cell differentiation. Using cDNA prepared in *B*, real time PCR was carried out with *SelW*- and *Hprt1*-specific primers. Expression level of *SelW* mRNA in proliferating C2C12 cells in GM was arbitrarily set at 1. Data are represented as means \pm S.D. of four independent experiments performed in triplicate. *D*, expression of *SelW* and muscle-specific marker proteins during C2C12 cell differentiation. Western blotting was performed with cell lysates cultured at the indicated time points using specific antibodies and the generated polyclonal peptide antibody anti-*SelW*. α -Tubulin served as a loading control. The result shown is representative of three separate experiments. *E*, relative expression of *SelW* protein. The expression of *SelW* protein was quantified by scanning the *SelW* blots shown in *D* and was normalized based on the expression level of α -tubulin. Expression level of normalized *SelW* in proliferating C2C12 cells in GM was arbitrarily set at 1. Data are represented as means \pm S.D. of three independent experiments.

tion, after which it was maintained at a constant level. Taken together, *SelW* was expressed both in proliferating C2C12 myoblasts and differentiating C2C12 myotubes, although it was specifically up-regulated at the early stage of differentiation and thereafter constantly maintained. These results allow us to speculate that the up-regulation of *SelW* expression in

the early stage of C2C12 cell differentiation may have been due to transcriptional activation of *SelW* early in myogenesis.

SelW Promoter Activity Is Up-regulated upon Differentiation of C2C12 Myoblasts into Myotubes—*SelW* is expressed well in various tissues, particularly in the skeletal muscle of mammals. In Fig. 1, we demonstrate that the expression of

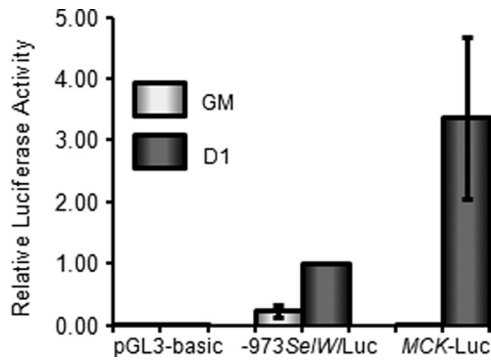


FIGURE 2. *SelW* promoter activity is up-regulated early in C2C12 myoblast differentiation. C2C12 myoblasts were transfected with $-973\text{SelW}/\text{Luc}$, $MCK\text{-Luc}$, or $pGL3\text{-basic}$ and pRL-TK. Transfected cells were cultured in GM up to $\sim 50\%$ confluence, followed by harvesting for *SelW* promoter analysis. For *SelW* promoter activity in DM, transfected C2C12 cells were grown up to $\sim 100\%$ confluence and then transferred into DM to induce differentiation for 1 day prior to *SelW* luciferase analysis. Firefly luciferase activity was normalized to *Renilla* activity, and data are represented as means \pm S.D. of three independent experiments performed in triplicate.

both *SelW* mRNA and protein was up-regulated in the early stage of C2C12 cell differentiation. To determine whether or not this up-regulation was due to the transcriptional activation of *SelW* during myogenesis, C2C12 cells were transfected with a rat *SelW* firefly luciferase plasmid, $-973\text{SelW}/\text{Luc}$, after which *SelW* promoter activity was determined in proliferating cells in GM and in differentiating cells in DM after 1 day. As shown in Fig. 2, differentiating C2C12 myotubes had ~ 5 -fold higher activity than proliferating C2C12 myoblasts, suggesting that *SelW* transcription was up-regulated by the activation of muscle-specific transcription factors during myogenesis. The *MCK* reporter gene ($MCK\text{-Luc}$), which is dramatically activated during muscle cell differentiation into myotubes, was used as a positive control. Along with the expression of *SelW* mRNA and protein, the promoter activity of *SelW* was up-regulated in the early stage of C2C12 cell differentiation into myotubes.

Putative E-boxes Are Associated with *SelW* Gene Promoter Activation in Differentiating C2C12 Cells—The transcription of many muscle-specific genes is regulated by MRFs or MEF2 factors during myogenesis. In particular, the MRF family of transcription factors activates its target genes using specific partner proteins such as E proteins (E12 and E47), which bind to conserved E-boxes located in target gene promoters or enhancers. The E-box is a representative binding element for muscle-specific transcription factors as well as non-muscle transcription factors. Sequence analysis found that there were four putative E-boxes in the *SelW* promoter from -973 to $+32$ bp, hereafter designated as E1, E2, E3, and E4 (Fig. 3A). To confirm that the presence of E-boxes in the *SelW* promoter is associated with promoter activation, C2C12 cells were transfected with $-973\text{SelW}/\text{Luc}$ or $-240\text{SelW}/\text{Luc}$, after which *SelW* promoter activity was measured after 1 day of culture in DM. $-240\text{SelW}/\text{Luc}$ is a luciferase reporter plasmid containing a *SelW* promoter deletion fragment without any E-boxes, as shown in Fig. 3A. As shown in Fig. 3B, the activity of $-240\text{SelW}/\text{Luc}$ decreased by $\sim 80\%$ compared with that of $-973\text{SelW}/\text{Luc}$, which contains all of the E-boxes. This result suggests that the putative E-boxes in the *SelW* promoter

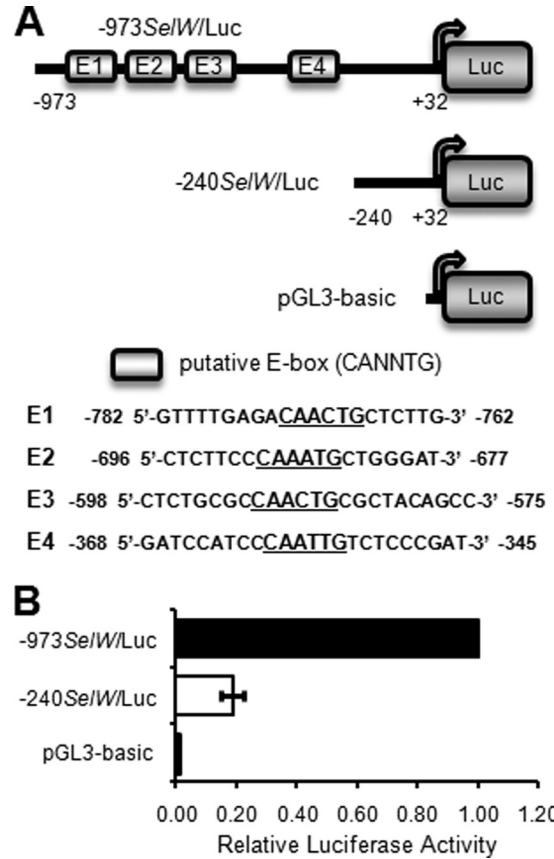


FIGURE 3. Putative E-boxes enhance *SelW* promoter activity in differentiating C2C12 cells. *A*, schematic illustration of *SelW* promoter fragments. Four putative E-boxes are present in the promoter region from -973 to -240 bp, and the reporter plasmid constructs used in the luciferase analysis are shown (upper panel). DNA sequences in each E-box are shown in the lower panel. *B*, *SelW* promoter activity in C2C12 cells using a deletion mutant after 1 day of culture in DM. C2C12 cells were transfected with *SelW* promoter reporter plasmids ($-973\text{SelW}/\text{Luc}$ or $-240\text{SelW}/\text{Luc}$) and pRL-TK. After cultivation up to $\sim 100\%$ confluence in GM, the cells were cultured in DM for 1 day. *SelW* gene promoter activity was measured and normalized to the *Renilla* activity of pRL-TK. Results are expressed as means \pm S.D. of three independent experiments performed in triplicate.

caused promoter activation in the early stage of differentiation.

MyoD Regulates Promoter Activation of *SelW* in the Early Stage of C2C12 Cell Differentiation—To investigate whether or not the E-boxes present in the *SelW* gene promoter associate with muscle-specific transcription factors, we used the non-muscle cell line C3H10T1/2, which is an embryonic mouse fibroblast cell line that is converted to skeletal myoblasts by MRFs such as MyoD (31). C3H10T1/2 cells were transiently co-transfected with $-973\text{SelW}/\text{Luc}$ and a plasmid expressing one of three MRF family members (MyoD, Myf5, and myogenin) or one of three MEF2 family members (MEF2A, MEF2C, and MEF2D) (Fig. 4A). $-973\text{SelW}/\text{Luc}$ promoter activity was increased by the co-expression of MRFs or MEF2s, except myogenin. Among them, the highest luciferase activity was an ~ 2.5 -fold increase observed when the cells were co-expressed with MyoD. However, the activity of C3H10T1/2 cells transfected with $-240\text{SelW}/\text{Luc}$ was not affected as shown in Fig. 4B. In the experiment, 4RSV-Luc was used as a positive control. These results suggest that

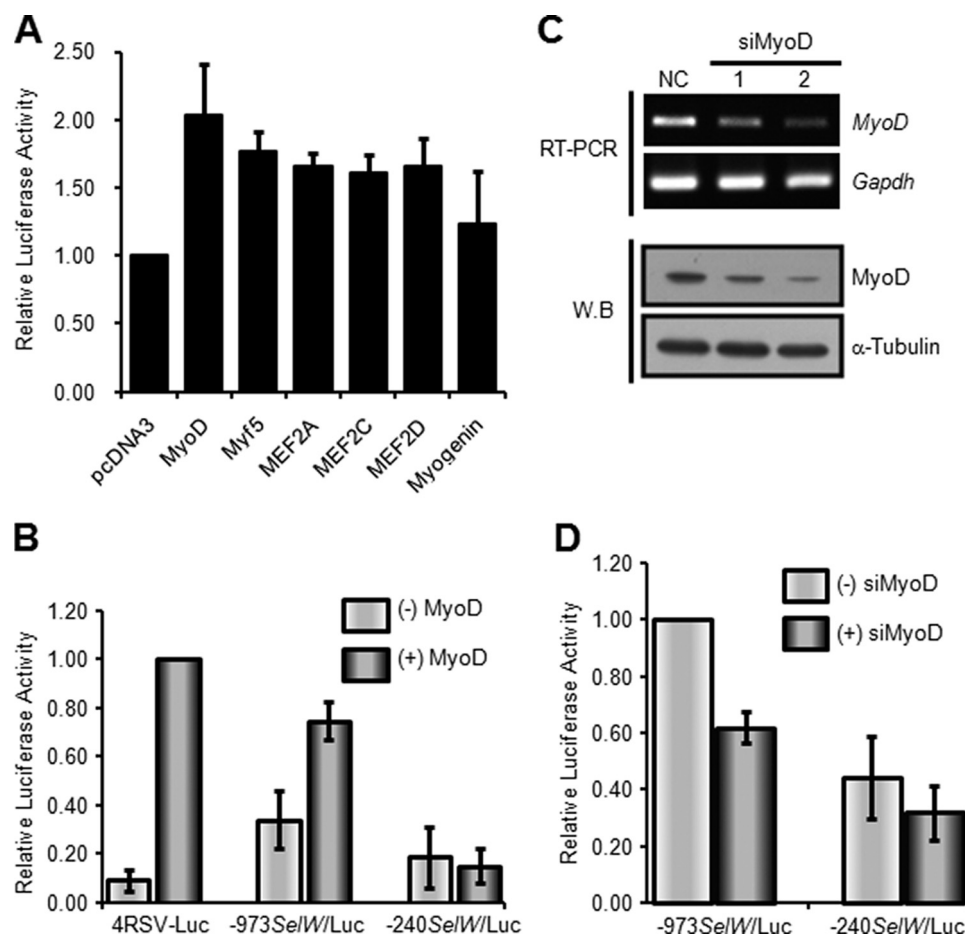


FIGURE 4. MyoD enhances *SelW* gene promoter activity. *A*, activity of the *SelW* promoter by MRFs and MEF2 factors. Nonmyogenic C3H10T1/2 cells were co-transfected with $-973*SelW*/Luc$ and pRL-TK, together with an expression plasmid containing a MRF (MyoD, Myf5, and myogenin) or MEF2 (MEF2A, MEF2C, and MEF2D) factor. The cells were cultured in GM and harvested for Dual-Luciferase reporter analysis. Results are expressed as means \pm S.D. of four independent experiments in triplicate. *B*, effect of exogenous MyoD on *SelW* gene promoter activity. *SelW* promoter plasmids and 4RSV-Luc plasmid were co-transfected with or without an expression plasmid containing MyoD into C3H10T1/2 cells. The cells were cultured in GM up to \sim 100% confluence, maintained, and harvested after 1 day of culture in DM. Results are expressed as means \pm S.D. of four independent experiments performed in triplicate. *C*, knockdown of MyoD expression by siRNA in C2C12 cells. C2C12 myoblasts were separately transfected with two distinct siRNAs specific for MyoD (siMyoD 1 and 2) along with a negative control (NC). The cells were maintained in GM up to \sim 90% confluence, followed by cultivation in DM for 1 day. MyoD expression was monitored by RT-PCR and Western blot analysis. The *Gapdh* gene and α -tubulin protein were used as loading controls for each analysis. *D*, effect of MyoD depletion on *SelW* promoter activity in differentiating C2C12 cells. C2C12 cells transfected with siMyoD 2 were analyzed for *SelW* gene promoter activity after 1 day of culture in DM. Data are represented as means \pm S.D. of four independent experiments performed in triplicate.

MyoD was a transcriptional activator for the *SelW* promoter. To further confirm the results, C2C12 cells were transiently transfected with siRNA against MyoD (siMyoD). We designed two siMyoDs (siMyoD 1 and siMyoD 2) and tested their knockdown efficiencies. As shown in Fig. 4C, the mRNA and protein levels of endogenous MyoD were reduced remarkably in C2C12 cells by siMyoD 2 transfection. Of the two siMyoDs examined, we therefore selected siMyoD 2 for our next experiments. To examine the effect of endogenous MyoD on *SelW* promoter activity in myogenic C2C12 cells, we measured $-973*SelW*/Luc$ activity or $-240*SelW*/Luc$ activity in differentiating C2C12 cells after knockdown of MyoD expression with siMyoD. As shown in Fig. 4D, siMyoD decreased $-973*SelW*/Luc$ activity but had no significant effect on $-240*SelW*/Luc$ activity. These results suggest that MyoD was involved in the regulation of *SelW* promoter activity.

MyoD Binds to a Putative *SelW* Promoter E-box—As described above, we found that the *SelW* gene promoter was activated by the myogenic basic helix-loop-helix protein

MyoD in the early stage of C2C12 cell differentiation. This activation may be due to the binding of MyoD to putative E-boxes located in the *SelW* promoter region from -973 to -240 bp. To determine the biological role of each E-box in the *SelW* gene promoter, the E-box consensus sequence CANNTG was mutated to CGNNAG using $-973*SelW*/Luc$ (Fig. 5A). The resulting reporter plasmids were designated as $-973*SelW*/Luc$ -E1m, $-973*SelW*/Luc$ -E2m, $-973*SelW*/Luc$ -E3m, and $-973*SelW*/Luc$ -E4m and were introduced into C2C12 cells. Luciferase activity was measured after 1 day of culture in DM (Fig. 5B). The activities of $-973*SelW*/Luc$ -E1m and $-973*SelW*/Luc$ -E4m were reduced by \sim 60% compared with wild-type $-973*SelW*/Luc$, whereas those of $-973*SelW*/Luc$ -E2m and $-973*SelW*/Luc$ -E3m were slightly increased or did not change. Therefore, these data show that each E-box differentially contributed to *SelW* promoter activity. Nevertheless, the E1 and E4 E-boxes might have played important roles in MyoD-dependent *SelW* promoter activation during C2C12 cell differentiation. Next, EMSA was performed with

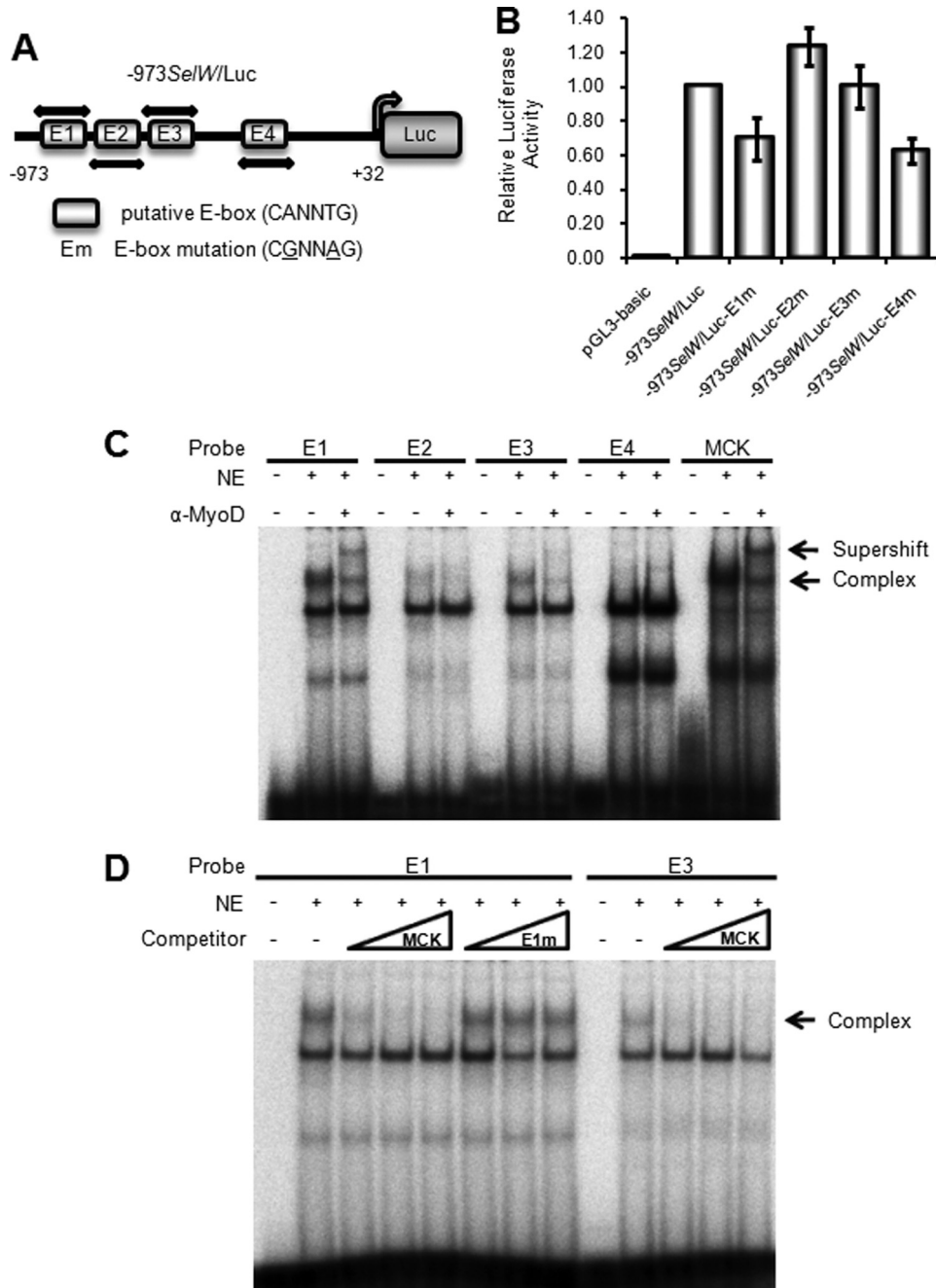


FIGURE 5. MyoD binds to E-boxes of the *SeiW* promoter in differentiating C2C12 cells. *A*, schematic representation of *SeiW* promoter $-973SeiW/Luc$ harboring four putative E-boxes. *B*, *SeiW* promoter activity of $-973SeiW/Luc$ and E-box mutant plasmids in differentiating C2C12 cells. C2C12 cells were transfected with *SeiW* promoter $-973SeiW/Luc$ or E-box mutant plasmids and pRL-TK. Luciferase activity was measured by harvesting of transfected C2C12 cells after 1 day of culture in DM. Data are expressed as means \pm S.D. of three or four independent experiments in triplicate. *C* and *D*, EMSA of the putative E-boxes in the *SeiW* promoter. [γ - ^{32}P]dATP-labeled oligonucleotide probes for the consensus E-boxes were incubated with nuclear extracts (NE) of differentiating C2C12 cells in DM for 1 day. For supershift analysis (*C*), anti-MyoD antibody was incubated with nuclear extracts prior to addition of labeled probes. For competition assays of the E1 and E3 E-boxes (*D*), unlabeled competitors were added (10-, 50-, and 100-fold excess) in a dose-dependent manner to nuclear extracts prior to incubation with labeled probes. The unlabeled competitor MCK was the same oligonucleotide used in *C*, and E1m was the oligonucleotide used for the mutagenesis of E1.

[γ - ^{32}P]dATP-labeled oligonucleotide probes for each E-box to confirm MyoD binding during C2C12 cell differentiation. Of the four labeled E-box probes, E1 probe formed the strongest complex with nuclear extracts of differentiating C2C12 cells (Fig. 5C). Furthermore, this complex supershifted in the presence of anti-MyoD antibody, indicating that MyoD bound directly to the E1 E-box of the *SeiW* promoter. The E3

probe also showed complex formation with the nuclear extracts, but to a lesser extent, and this complex also supershifted in response to anti-MyoD antibody. Labeled MCK probe was used as a positive control. The E1 and E3 E-boxes were further examined using specific unlabeled competitors (Fig. 5D). The amount of E1-MyoD complex was reduced in a dose-dependent manner by unlabeled MCK probe, but com-

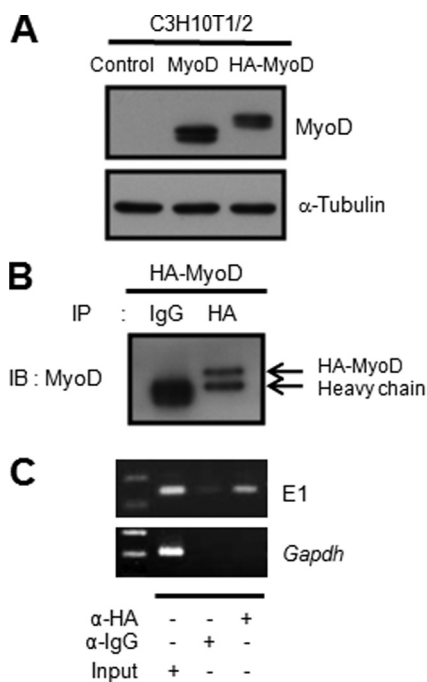


FIGURE 6. MyoD binds to an E-box of the *SeiW* promoter *in vivo*. *A*, expression of HA-tagged MyoD plasmid. Prior to ChIP, HA-tagged MyoD expression plasmid was confirmed by Western blotting with anti-MyoD antibody after transfection into C3H10T1/2 cells. *B*, confirmation of immunoprecipitated (IP) HA-MyoD complexes by ChIP. For the ChIP assay, C3H10T1/2 cells were co-transfected with HA-MyoD and -973*SeiW*/Luc, cultured in GM and then transferred into DM. After 1 day of culture in DM, the cells were subjected to ChIP analysis. After immunoprecipitation with anti-HA, the immunoprecipitated HA-MyoD complexes were confirmed by immunoblotting with anti-MyoD antibody. *C*, MyoD binding to the E1 E-box of the *SeiW* promoter by ChIP. The immunoprecipitated complexes were amplified by PCR with specific primers. *Gapdh* promoter was used as a negative control for specificity.

plex formation was not inhibited by unlabeled E1 mutant probe. Weak formation of the E3-MyoD complex was also reduced dose-dependently upon the addition of unlabeled MCK probe. The *in vivo* interaction of MyoD with the E1 E-box was confirmed by ChIP analysis (Fig. 6) after the expression of HA-tagged MyoD plasmid was analyzed by Western blotting (Fig. 6A). For ChIP, C3H10T1/2 cells were co-transfected with HA-tagged MyoD and *SeiW* promoter -973*SeiW*/Luc. After 1 day of culture in DM, the protein-DNA complexes were cross-linked, immunoprecipitated, and amplified. Meanwhile, anti-HA immunoprecipitated complexes were confirmed by immunoblotting with anti-MyoD antibody (Fig. 6B). As shown in Fig. 6C, anti-HA immunoprecipitated DNA corresponded to the E1 E-box of the *SeiW* promoter but not the *Gapdh* promoter. Taken together, our study shows that MyoD directly bound to the E1 E-box of the *SeiW* promoter. MyoD bound very weakly to E3 and thus had a lesser effect on *SeiW* promoter activity. Unexpectedly, E4 did not bind to MyoD even though its mutation reduced *SeiW* promoter activity as much as the E1 mutation (Fig. 5B).

Selenium Is Not Involved in *SeiW* Promoter Activation during Myogenic C2C12 Differentiation—*SeiW* expression did not prominently decrease after exchange of GM containing 10% FBS with DM supplemented with 2% HS, as shown in Fig. 1. It was also reported that 2% fetal calf serum is adequate for

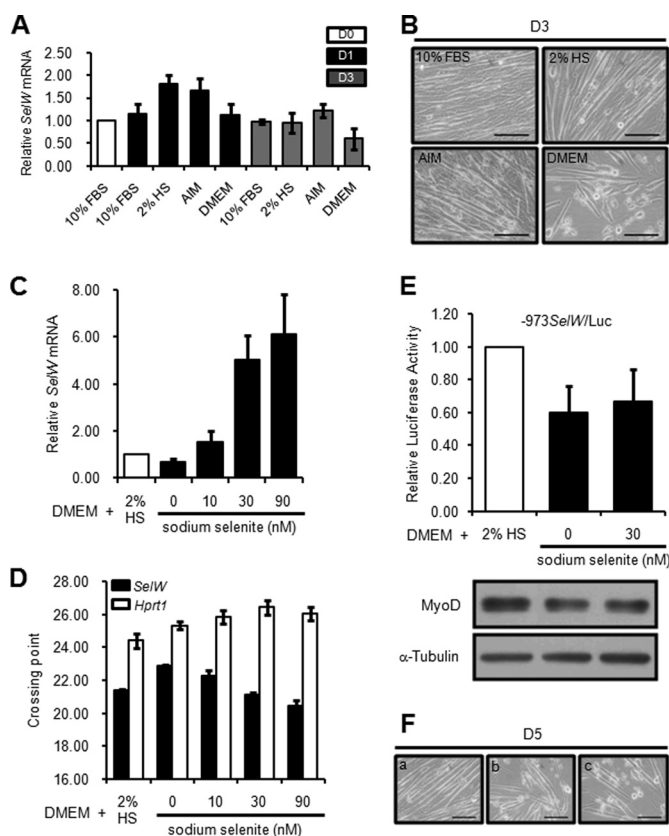


FIGURE 7. *SeiW* promoter is not activated by selenium in differentiating C2C12 cells. *A*, real time PCR analysis of *SeiW* gene expression in different culture media after induction of C2C12 differentiation. Expression level of *SeiW* mRNA in D0 was arbitrarily set at 1. Data are represented as means \pm S.D. of three independent experiments performed in triplicate. *B*, phase-contrast microscopic images of differentiating C2C12 cells cultured under the experimental conditions at D3 shown in *A*. Bar, 100 μ m. *C*, relative expression of *SeiW* mRNA in culture media supplemented with different levels of sodium selenite. The data are represented as means \pm S.D. of three independent experiments performed in triplicate. *D*, real time PCR crossing point values of *SeiW* and *Hprt1* mRNAs shown in *C*. The values are expressed as means \pm S.D. *E*, *SeiW* promoter activity and MyoD expression in differentiating C2C12 cells in different culture media. C2C12 cells were transfected with -973*SeiW*/Luc and pRL-TK, maintained in GM up to \sim 100% confluence, followed by cultivation in culture media without or with selenium for 1 day. *SeiW* gene promoter activity was measured and normalized to the *Renilla* activity of pRL-TK. MyoD expression was analyzed by Western blotting. *F*, phase-contrast microscopic images of differentiating C2C12 cells for 5 days under the same medium conditions shown in *E*. Panel *a*, DMEM with 2% HS; panel *b*, DMEM; panel *c*, DMEM with 30 nM sodium selenite. Bar, 100 μ m.

SeiW mRNA expression in L8 rat myoblasts (32). Selenium is known as one of the most important factors regulating selenoprotein expression. In this study, we induced the differentiation of C2C12 cells by culturing in GM or DM containing different concentrations of serum as well as in serum-free DMEM to examine the effect of selenium on *SeiW* expression during differentiation. AIM, which is a type of serum-free medium for C2C12 differentiation (33, 34) containing an unknown component, was also used. As shown in Fig. 7A, *SeiW* mRNA expression in C2C12 cells cultured in DMEM was lower than that in cells cultured in medium containing 2% HS or AIM at D1. Interestingly, the expression level of *SeiW* mRNA in C2C12 cells grown in DMEM was comparable with that grown in GM with 10% FBS. However, the expression level of *SeiW* mRNA was relatively lower in C2C12 cells cul-

tured in DMEM without serum at D3. Furthermore, because the number of adherent C2C12 cells cultured in DMEM was remarkably reduced compared with cells cultured in other media (Fig. 7B), further experiments were carried at the time point D1. Using real time PCR, it was found that *SelW* mRNA expression was up-regulated by increased selenium concentration in DMEM at D1 (Fig. 7C). Fig. 7D shows the mean values of PCR crossing points for mRNA expression of *SelW* and *Hprt1*. The value of *SelW* decreased by increasing the selenium concentration, whereas the value of *Hprt1* increased. Thus, the relative mRNA level of *SelW* further increased at higher selenium content. The mRNA of *Hprt1* was measured for normalization purposes. To determine how the *SelW* mRNA level was increased by selenium, *SelW* promoter activity of $-973\text{SelW}/\text{Luc}$ was analyzed. According to a recent report (35), culture medium containing $\sim 10\%$ FBS has ~ 29 nM selenium. Thus, we maintained C2C12 cells transfected with $-973\text{SelW}/\text{Luc}$ in DMEM without or with 30 nM sodium selenite. As shown in Fig. 7E, *SelW* promoter activity of C2C12 cells cultured in DMEM alone was lower than that of cells cultured with 2% HS. Furthermore, the addition of selenium to DMEM had no effect on the promoter activity of differentiating C2C12 cells. MyoD expression also decreased in cells cultured in DMEM without 2% HS (Fig. 7E, bottom). Thus, *SelW* promoter activity was dependent on MyoD expression as described above. Therefore, increased *SelW* mRNA expression at D1 by addition of selenium to DMEM, as shown in Fig. 7C, might have been due to increased *SelW* mRNA stabilization, as reported previously (32), and not transcriptional regulation. In this study, expression of *SelW* mRNA during differentiation was determined in the presence of 2% HS. When the cells were cultured in DMEM without 2% HS, cell attachment and the extent of myotube formation were abnormally low, even though selenium was added as shown in Fig. 7F. The differentiation conditions used are not physiological as they are artificially selenium-deficient, and thus the regulation observed may only be relevant under conditions of selenium starvation.

DISCUSSION

For decades, selenoproteins, which contain selenium in their protein sequences, have been studied for their beneficial biological effects. *SelW* is a selenoprotein containing the thioredoxin reductase-like motif CXXU and is mainly understood in terms of its antioxidant effects. In this study, we investigated its high tissue-specific expression in skeletal muscle. Tissue-specific expression of a protein implies regulation by a tissue-specific factor as well as a significant role for the protein. Thus, we hypothesized that high *SelW* expression in skeletal muscle may be regulated by a muscle-specific factor.

To analyze *SelW* expression in mouse skeletal muscle C2C12 cells during differentiation, we performed RT-PCR and real time PCR with a specific primer set for *SelW*, along with Western blot analysis with *SelW* peptide antibody. We found that *SelW* expression was up-regulated during C2C12 myogenesis, particularly in the early stage of differentiation (Fig. 1). According to a previous report by

Loflin *et al.* (2), *SelW* is involved in muscle growth and proliferation based on its strong expression in proliferating C2C12 myoblasts but not differentiating C2C12 myotubes. However, they only examined *SelW* expression by Northern blot analysis and therefore did not investigate any muscle-specific marker proteins expressed during C2C12 myogenesis for confirmation of the differentiation conditions. Therefore, we considered the optimal cell density for the induction of C2C12 cell differentiation. It was important that C2C12 cells be maintained at a low density so that their myoblast properties are not lost under proliferation conditions. This is because confluent C2C12 cells slowly differentiate even if grown in GM supplemented with serum, which affects protein expression. For example, the transcription factor c-Myb shows differential expression depending on the density of C2C12 cells during differentiation (36). Therefore, at the time point mentioned in the previous report, C2C12 cells might have already begun to differentiate even in GM-containing serum.

There are two main pieces of evidence supporting the up-regulation of *SelW* expression in differentiating C2C12 cells. One is our previous report that found *SelW* mRNA is not expressed in back muscle during rat embryogenesis (10). However, *SelW* expression could not be ruled out in the skeletal muscle of neonatal or adult animals (9–10). The other was observed by *in situ* hybridization during zebrafish embryogenesis (37). There are three *SelW* genes in zebrafish called *SePW1*, *SePW2a*, and *SePW2b*. Interestingly, none of these *SelW* genes are expressed in the muscle of zebrafish embryos.

We also examined *SelW* promoter activity during myogenesis using luciferase reporter analysis. Consistent with the expression levels of *SelW* mRNA and protein, the *SelW* promoter activity of $-973\text{SelW}/\text{Luc}$ was markedly increased in the early stage of differentiation (Fig. 2). This activity was associated with the presence of four putative E-boxes located in the *SelW* promoter (Fig. 3). Many muscle-specific proteins are transcriptionally regulated by the binding of MRFs to E-boxes within their promoters or enhancers during muscle differentiation. The E-box is one of the most understood motifs in the promoters and enhancers of many genes, not just in those related to muscle. According to a review by Berkes and Tapscott (22), an E-box occurs about once every 256 bases throughout the whole genome. Thus, the E-box is physiologically important to the recognition of distinct *cis*-acting elements by transcription factors such as MRFs. In this study, the *SelW* promoter was significantly activated by MyoD during C2C12 differentiation. Using point mutagenesis, we found that *SelW* promoter activation was associated with two of its four E-boxes, namely E1 and E4 (Fig. 5B). However, this does not rule out the participation of other factors. In addition, EMSA revealed that E1 directly interacted with MyoD (Fig. 5, C and D), as did E3, but to a much lesser extent. Noticeably, E4 did not interact directly with MyoD, although its mutation resulted in reduced activity similar to that of E1 mutant in differentiating C2C12 cells, as shown in Fig. 5. It is known that *in vivo* transcriptional activation and *in vitro* binding affinities for E-boxes by MyoD do not always correlate (38). Therefore, to test the biological significance of the E4 E-box,

Transcriptional Regulation of *SelW* in Myogenesis

we constructed deletion mutants of the *SelW* promoter containing only E4 or an E4 mutant, $-585SelW/Luc$ and $-585SelW/Luc-E4m$, respectively (data not shown). We found that $-585SelW/Luc$ activity was increased about ~2.5-fold by MyoD compared with control pcDNA3. However, the mutant $-585SelW/Luc-E4m$ was not affected by MyoD, indicating that E4 might be activated indirectly via a MyoD-dependent downstream factor.

Selenium is an important factor regulating the expression of the selenoproteome. It has been reported that the expression level of *SelW* mRNA is increased in selenium-supplemented medium due to *SelW* mRNA stabilization but not its transcriptional rate (32). In this study, we show that transcriptional regulation of the *SelW* gene was not affected by addition of selenium into serum-free DMEM but was affected by the expression of the myogenic factor MyoD in differentiating C2C12 cells (Fig. 7). As described above, selenium is an important factor for the stability of *SelW* mRNA. Myogenic differentiation of C2C12 cells was induced by culturing in DMEM containing 2% HS, namely DM in this study. As C2C12 cells were cultured without 2% HS, impaired differentiation was observed, even though the cells were cultured with additional selenium (Fig. 7F). Thus, the effect of selenium on stability of *SelW* mRNA during myogenic differentiation could not be determined in this study. C2C12 cells are capable of differentiating in serum-free media. Choosing an ideal serum-free medium should be considered to preserve the important characteristics of muscle during differentiation. In addition, to precisely study the effect of selenium in differentiating cells, moderate concentrations of selenium are recommended.

In addition to *SelW*, *TrxR1* and *SelN* are also expressed in skeletal muscle. In contrast to *SelW*, their expression is down-regulated in C2C12 myotubes, as was shown in this study (*SelN* data not shown) (30, 39). Indeed, there was a study on *SelN* expression in mouse and human as well as in cells (39, 40). *SelN* shows a dynamic expression pattern in skeletal muscle during development, decreasing in amount from the fetus to adult. Based on this developmental expression pattern, it is suggested that *SelN* may have a role in maturation. The expression pattern of *SelW* in this study, which displays increased expression upon differentiation and constant expression thereafter, suggests that *SelW* probably participates in the maintenance of muscle differentiation.

In a recent review on transcriptional regulation of mammalian selenoprotein expression, putative binding sites for transcription factors that control the transcription of *SelW* were predicted in the promoters of human selenoprotein genes, with MyoD one of the notable candidates (41). In this same manner, we suggest that MyoD was a transcriptional activator of *SelW* expression in skeletal muscle cells. This is the first evidence for the transcriptional regulation of *SelW* expression by a tissue-specific factor.

Acknowledgments—We thank Soon-Young Jung and Yoonhee Bae (Korea University, Seoul, Korea) for technical support.

REFERENCES

1. Jeong, D., Kim, T. S., Chung, Y. W., Lee, B. J., and Kim, I. Y. (2002) *FEBS Lett.* **517**, 225–228
2. Loflin, J., Lopez, N., Whanger, P. D., and Kioussi, C. (2006) *J. Inorg. Biochem.* **100**, 1679–1684
3. Chung, Y. W., Jeong, D., Noh, O. J., Park, Y. H., Kang, S. I., Lee, M. G., Lee, T. H., Yim, M. B., and Kim, I. Y. (2009) *Mol. Cells* **27**, 609–613
4. Flohé, L. (2009) *Biochim. Biophys. Acta* **1790**, 1389–1403
5. Dikiy, A., Novoselov, S. V., Fomenko, D. E., Sengupta, A., Carlson, B. A., Cerny, R. L., Ginalski, K., Grishin, N. V., Hatfield, D. L., and Gladyshev, V. N. (2007) *Biochemistry* **46**, 6871–6882
6. Aachmann, F. L., Fomenko, D. E., Soragni, A., Gladyshev, V. N., and Dikiy, A. (2007) *J. Biol. Chem.* **282**, 37036–37044
7. Sengupta, A., Carlson, B. A., Labunskyy, V. M., Gladyshev, V. N., and Hatfield, D. L. (2009) *Biochem. Cell Biol.* **87**, 953–961
8. Whanger, P. D. (2000) *Cell. Mol. Life Sci.* **57**, 1846–1852
9. Yeh, J. Y., Beilstein, M. A., Andrews, J. S., and Whanger, P. D. (1995) *FASEB J.* **9**, 392–396
10. Jeong, D. W., Kim, E. H., Kim, T. S., Chung, Y. W., Kim, H., and Kim, I. Y. (2004) *Mol. Cells* **17**, 156–159
11. Sakurai, A., Nishimoto, M., Himeno, S., Imura, N., Tsujimoto, M., Kunitomo, M., and Hara, S. (2005) *J. Cell. Physiol.* **203**, 529–537
12. Walter, P. L., Steinbrenner, H., Barthel, A., and Klotz, L. O. (2008) *Biochem. Biophys. Res. Commun.* **365**, 316–321
13. Kryukov, G. V., Castellano, S., Novoselov, S. V., Lobanov, A. V., Zehtab, O., Guigó, R., and Gladyshev, V. N. (2003) *Science* **300**, 1439–1443
14. Ye, Y., Shibata, Y., Yun, C., Ron, D., and Rapoport, T. A. (2004) *Nature* **429**, 841–847
15. Gao, Y., Hannan, N. R., Wanyonyi, S., Konstantopolous, N., Pagnon, J., Feng, H. C., Jowett, J. B., Kim, K. H., Walder, K., and Collier, G. R. (2006) *Cytokine* **33**, 246–251
16. Amantana, A., Vorachek, W. R., Butler, J. A., Costa, N. D., and Whanger, P. D. (2002) *J. Inorg. Biochem.* **91**, 356–362
17. Amantana, A., Vorachek, W. R., Butler, J. A., Ream, W., and Whanger, P. D. (2004) *J. Inorg. Biochem.* **98**, 1513–1520
18. Wimmer, U., Wang, Y., Georgiev, O., and Schaffner, W. (2005) *Nucleic Acids Res.* **33**, 5715–5727
19. Stoytcheva, Z. R., Vladimirov, V., Douet, V., Stoychev, I., and Berry, M. J. (2010) *Biochim. Biophys. Acta* **1800**, 416–424
20. Tajbakhsh, S. (2003) *Curr. Opin. Genet. Dev.* **13**, 413–422
21. Shi, X., and Garry, D. J. (2006) *Genes Dev.* **20**, 1692–1708
22. Berkes, C. A., and Tapscott, S. J. (2005) *Semin. Cell Dev. Biol.* **16**, 585–595
23. Lassar, A. B., Buskin, J. N., Lockshon, D., Davis, R. L., Apone, S., Hauschka, S. D., and Weintraub, H. (1989) *Cell* **58**, 823–831
24. Tapscott, S. J. (2005) *Development* **132**, 2685–2695
25. Asakura, A., Fujisawa-Sehara, A., Komiya, T., Nabeshima, Y., and Nabeshima, Y. (1993) *Mol. Cell. Biol.* **13**, 7153–7162
26. Thayer, M. J., Tapscott, S. J., Davis, R. L., Wright, W. E., Lassar, A. B., and Weintraub, H. (1989) *Cell* **58**, 241–248
27. Blau, H. M., Chiu, C. P., and Webster, C. (1983) *Cell* **32**, 1171–1180
28. Blau, H. M., Pavlath, G. K., Hardeman, E. C., Chiu, C. P., Silberstein, L., Webster, S. G., Miller, S. C., and Webster, C. (1985) *Science* **230**, 758–766
29. Parker, M. H., Perry, R. L., Fauteux, M. C., Berkes, C. A., and Rudnicki, M. A. (2006) *Mol. Cell. Biol.* **26**, 5771–5783
30. Catani, M. V., Savini, I., Duranti, G., Caporossi, D., Ceci, R., Sabatini, S., and Avigliano, L. (2004) *Free Radic. Biol. Med.* **37**, 1024–1036
31. Davis, R. L., Weintraub, H., and Lassar, A. B. (1987) *Cell* **51**, 987–1000
32. Gu, Q. P., Ream, W., and Whanger, P. D. (2002) *Biomaterials* **15**, 411–420
33. Lawson, M. A., and Purslow, P. P. (2000) *Cells Tissues Organs* **167**, 130–137
34. Fujita, H., Endo, A., Shimizu, K., and Nagamori, E. (2010) *Biotechnol. Bioeng.* **107**, 894–901
35. Budiman, M. E., Bubenik, J. L., Miniard, A. C., Middleton, L. M., Gerber,

- C. A., Cash, A., and Driscoll, D. M. (2009) *Mol. Cell* **35**, 479–489
36. Kaspar, P., Pajer, P., Sedlak, D., Tamaoki, T., and Dvorak, M. (2005) *Exp. Cell Res.* **309**, 419–428
37. Thisse, C., Degrave, A., Kryukov, G. V., Gladyshev, V. N., Obrecht-Pflumio, S., Krol, A., Thisse, B., and Lescure, A. (2003) *Gene Expr. Patterns* **3**, 525–532
38. Huang, J., Blackwell, T. K., Kedes, L., and Weintraub, H. (1996) *Mol. Cell. Biol.* **16**, 3893–3900
39. Castets, P., Maugenre, S., Gartioux, C., Rederstorff, M., Krol, A., Lescure, A., Tajbakhsh, S., Allamand, V., and Guicheney, P. (2009) *BMC Dev. Biol.* **9**, 46
40. Petit, N., Lescure, A., Rederstorff, M., Krol, A., Moghadaszadeh, B., Wewer, U. M., and Guicheney, P. (2003) *Hum. Mol. Genet.* **12**, 1045–1053
41. Stoytcheva, Z. R., and Berry, M. J. (2009) *Biochim. Biophys. Acta* **1790**, 1429–1440