

ORIGINAL INVESTIGATION

Open Access

Adiponectin levels and expression of adiponectin receptors in isolated monocytes from overweight patients with coronary artery disease

Anastasios Kollias^{1,2†}, Panayoula C Tsiotra^{1†}, Ignatios Ikonomidis³, Eirini Maratou¹, Panayota Mitrou¹, Erifyli Kyriazi^{1,2}, Eleni Boutati², John Lekakis³, Theofanis Economopoulos², Dimitrios T Kremastinos³, George Dimitriadis², Sotirios A Raptis^{1,2*}

Abstract

Background: Adiponectin has insulin-sensitizing and anti-atherosclerotic effects, partly mediated through its action on monocytes. We aimed to determine adiponectin levels and expression of its receptors (AdipoR1 and AdipoR2) in peripheral monocytes from overweight and obese patients with coronary artery disease (CAD).

Methods: Fifty-five overweight/obese patients, suspected for CAD, underwent coronary angiography: 31 were classified as CAD patients (stenosis $\geq 50\%$ in at least one main vessel) and 24 as nonCAD. Quantitative RT-PCR and flow cytometry were used for determining mRNA and protein surface expression of adiponectin receptors in peripheral monocytes. A high sensitivity multiplex assay (xMAP technology) was used for the determination of plasma adiponectin and interleukin-10 (IL-10) secreted levels.

Results: Plasma adiponectin levels were decreased in CAD compared to nonCAD patients (10.9 ± 3.1 vs. 13.8 ± 5.8 $\mu\text{g/ml}$ respectively, $p = 0.033$). In multivariable analysis, Matsuda index was the sole independent determinant of adiponectin levels. AdipoR1 and AdipoR2 protein levels were decreased in monocytes from CAD compared to nonCAD patients (59.5 ± 24.9 vs. 80 ± 46 and 70.7 ± 39 vs. 95.6 ± 47.8 Mean Fluorescence Intensity Arbitrary Units respectively, $p < 0.05$). No significant differences were observed concerning the mRNA levels of the adiponectin receptors between CAD and nonCAD patients. AdipoR2 protein levels were positively correlated with plasma adiponectin and Matsuda index ($r = 0.36$ and 0.31 respectively, $p < 0.05$ for both). Furthermore, basal as well as adiponectin-induced IL-10 release was reduced in monocyte-derived macrophages from CAD compared to nonCAD subjects.

Conclusions: Overweight patients with CAD compared to those without CAD, had decreased plasma adiponectin levels, as well as decreased surface expression of adiponectin receptors in peripheral monocytes. This fact together with the reduced adiponectin-induced IL-10 secretion from CAD macrophages could explain to a certain extent, an impaired atheroprotective action of adiponectin.

Background

Cardiovascular disease (CVD) is a leading cause of mortality worldwide accounting for 30% of total global deaths and the number one leading cause of deaths in developing countries. Various studies have demonstrated

the association of obesity and insulin resistance with cardiovascular risk. It has been recognized that inflammatory mechanisms play a pivotal role in initiation, maintenance and progress of CVD and that the association of CVD with obesity is mediated through the adipose tissue secretory activities.

Adiponectin, an adipose tissue secreted protein, has been well recognized to exhibit insulin-sensitizing, anti-inflammatory and anti-atherosclerotic properties, which are mediated through its receptors, AdipoR1 and

* Correspondence: saraptis@hndc.gr

† Contributed equally

¹Hellenic National Center for the Research, Prevention and Treatment of Diabetes Mellitus and its Complications (H.N.D.C), 3 Ploutarchou, 10675 Athens, Greece

Full list of author information is available at the end of the article

AdipoR2 [1,2]. These receptors are ubiquitously expressed in most organs as well as in human peripheral monocytes, and in monocyte-derived macrophages [2-5]. In these cells, adiponectin has been shown to modulate their inflammatory activity and most importantly to inhibit their transformation to foam cells, a hallmark of atherosclerosis [6-10]. More specifically, adiponectin induces the anti-inflammatory cytokine IL-10 in human monocytes and macrophages [5,6,11], while it suppresses the LPS-stimulated release of IL-6 in porcine macrophages [8]. Furthermore, adiponectin-induced secretion of IL-6 and IL-8 is reduced in monocytes from patients with type 1 or type 2 diabetes [5,12]. This fact may have significant implications in terms of atherosclerotic processes, since these cells play a pivotal role in inflammation and atherosclerosis [13].

Adiponectin levels are known to be decreased in patients with obesity, type 2 diabetes and coronary artery disease (CAD) [14-17]. However, in recent studies, adiponectin was shown to be associated with an adverse outcome in patients with CAD, challenging the emerging evidence for its role [18-21]. In addition, alterations at the level of adiponectin receptors expression have been reported but with inconclusive results showing upregulation or downregulation in the presence of insulin resistance [5,22-28]. Recently, a lower abundance of adiponectin receptors was found in monocytes from overweight/obese patients with type 2 diabetes [5]. However, the expression levels of adiponectin receptors have not been examined in CAD.

The aim of this study was to examine whether the relative mRNA and protein (surface) expression of AdipoR1 and AdipoR2 in human peripheral monocytes is altered in overweight/obese patients with CAD, and whether this might relate to their circulating adiponectin levels and to indices of insulin resistance and atherosclerosis.

Methods

Subjects and investigation

Our study included patients with Body Mass Index (BMI) above 25 Kg/m² who underwent elective coronary angiography for the investigation of the existence of chronic stable CAD. Patients with a 50% or greater diameter stenosis in at least one major coronary artery were considered as CAD positive patients. The exclusion criteria were: unstable angina or acute myocardial infarction, unstable condition including infections, heart failure, malignancies, renal disease (creatinin level > 1.5 mg/dl). All patients underwent intima-media thickness (IMT) assessment in 2 paired segments of both common carotids, as well as in carotid bulbs using B-mode ultrasound imaging. IMT was measured using an automatically trading software (Vivid 7 GE Horton,

Norway). The research conducted in this paper has been carried out in accordance with the Declaration of Helsinki (2000) of the World Medical Association and the study protocol was approved by the Scientific and Ethics Committee of "Attikon" University General Hospital. All patients gave their written informed consent.

Two to three weeks after their discharge from the Cardiology Department, patients were subjected to a 2-hour oral glucose (75gr) tolerance test (OGTT) for the assessment of their insulin resistance status. All subjects were informed to halt their medication at least one day before the OGTT, as necessary. Insulin resistance was calculated by the homeostasis model assessment index (HOMA-IR) as [fasting insulin (μ U/mL) \times fasting glucose (mmol/L)]/22.5 [29]. Insulin sensitivity was calculated by the Matsuda index as [10.000/square root of (fasting glucose \times fasting insulin) \times (mean glucose during OGTT \times mean insulin during OGTT)] [30]. At the beginning of the OGTT, fasting blood was drawn and plasma was kept at -80°C for measurement of adiponectin levels. Fasting triglycerides, total and HDL-cholesterol were determined by an ILAB analyser (Instrumentation Laboratory SpA, Italy). Plasma glucose levels at fasting and during the OGTT, were analyzed on a Falcor 300 Chemical Analyser (Menarini Diagnostics, Italy), while plasma insulin levels were measured by IRMA (INSI-CTK, DiaSorin, Italy), in all individuals.

BMI was calculated as the ratio of body weight (Kg) per height (m²). Waist and hip circumference, weight and height were also measured in all individuals. Fifty-five patients, aged between 41 and 75 years, were eligible to be included in the study among 71 subjects screened. All patients were of a stable weight and had been on a normal isocaloric diet with normal physical activity, not participating in any specific exercise program. Information about use of medication, such as antihyperlipidemic, antidiabetic and antihypertensive medication was also collected. None of the patients were taking thiazolidinedione medication.

Study of adiponectin receptors surface (protein) expression with flow cytometry

The mononuclear cell fraction was isolated from peripheral blood and the surface adiponectin receptors, AdipoR1 and AdipoR2, were determined after staining the cells with suitable antibodies. More specifically, the antibodies used were rabbit anti-mouse AdipoR1 and rabbit anti-mouse AdipoR2 (Alpha Diagnostic International, San Antonio, USA), each corresponding to the extracellular carboxy-terminus domain of the respective receptor. Since the antibodies were not fluorochrome conjugated, they were labelled with the ZenonTM Alexa Fluor[®] 488 Rabbit IgG labelling kit (Invitrogen, Carlsbad, CA, USA). Cells were incubated for 30 min with

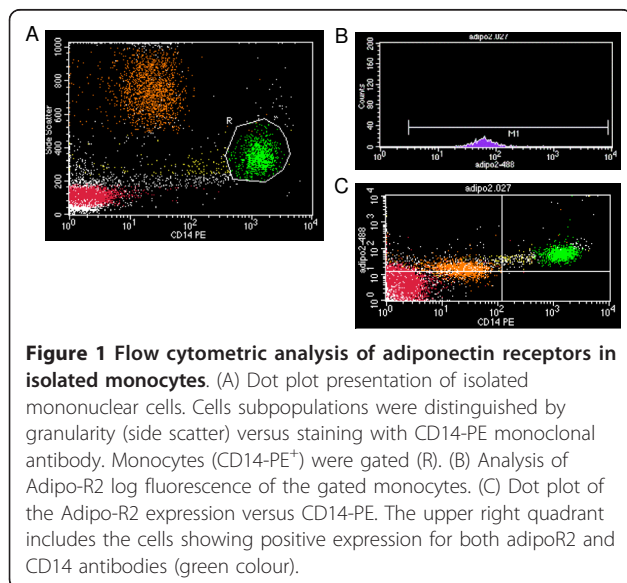
Alexa Fluor[®] 488-conjugated immunoglobulin in a ratio 1×10^6 cells μg^{-1} of immunoglobulin under mild constant shaking. The monocyte fraction was simultaneously stained with anti-CD14-PE monoclonal antibody (BD Biosciences, San Jose, CA, USA). After incubation with the antisera, cells were fixed with 0.1% (w/v) paraformaldehyde. A histogram of log green fluorescence of each adiponectin receptor was used for the determination of the mean fluorescence intensity of each sample (Figure 1).

The specificity of the antibodies used was evaluated by staining cells with isotype controls suitable for each antisera and the blockage of Fc-receptors prior to staining [31].

Two-colour flow cytometric analysis was performed on a BD FACSCalibur 4 colour flow cytometer (BD Biosciences) as previously described [31]. Data acquisition and analysis were performed using the BD CELL Quest Pro software (BD Biosciences). Results are expressed in mean fluorescence intensity arbitrary units (MFI AU).

Isolation of peripheral monocytes

Monocytes were isolated from mononuclear cells using a Magnetic Cell-Sorting technique with CD14 Human MicroBeads (Miltenyi Biotec, Gladbach, Germany). The exact number of cells was determined cytometrically with Flow-Count[™] Fluospheres (Beckman-Coulter, Miami, USA). The purity of the magnetically isolated CD14⁺ monocytes was determined after staining of the cells with a CD14 PE-CD45 FITC antibody (BD Biosciences, USA)



RNA preparation

Total RNA was extracted from CD14⁺ monocytes using the Tripure Isolation Reagent (Roche Diagnostics GmbH, Mannheim, Germany), and the integrity of RNA samples was determined on ethidium bromide-agarose gels and spectrophotometrically. For the removal of any residual DNA contamination, RNA samples were pre-incubated with RQ1 RNase-free DNase (Promega, Madison, WI, USA) before the reverse transcription reaction. Reverse transcription of 1 μg of total RNA was performed in all samples with the Transcriptor First Strand cDNA Synthesis Kit using random hexamer primers, according to the manufacturer's instructions (Roche Diagnostics GmbH, Mannheim, Germany).

Relative real-time PCR quantification of adiponectin receptors mRNA expression

A quantitative real-time PCR using fluorescently labeled hybridization probes was developed for detecting relative AdipoR1 and AdipoR2 mRNA levels in human CD14⁺ monocytes, in a spectrofluorometric thermal cycler (LightCycler, ROCHE, Mannheim, Germany) as previously described [32].

Hybridization specific primers and fluorescently labelled hybridization specific probes for all genes were designed and manufactured by the TIM-MOLBIOL (Berlin, Germany). Primers were chosen to lie between exons whenever possible and the analysis was performed with the program OLIGO 6.0 (Molecular Biology Insights, Cascade, USA). The specific reaction conditions for each set of genes (primer concentration, annealing temperature, magnesium chloride) were optimized using first the SYBR Green fluorescent dye (LightCycler[®] FastStart DNA Master SYBR Green I, Roche Diagnostics). Hybridization primers (sense and antisense, respectively) for the targets (AdipoR1, AdipoR2) and reference genes (β -actin) were as follows: for AdipoR1: 5'-TTTGACATATGGTTCCAGTCTCA-3' and 5'-GACTCTTCCTCTCACTTCAGCAA-3', for AdipoR2: 5'-TGACATCTGGTTTCACTCTCATCAG-3' and 5'-GTCATAGTCCCTGGAGACTGGT-3', for β -actin: 5'-CTTCTACAATGAGCTGCGTGTG-3' and 5'-GTGAGGATCTTCATGAGGTAGTCAGTC-3'. Hybridization probes (FL- and LC Red640-probes, respectively) for the targets (AdipoR1, AdipoR2) and reference genes (β -actin) were as follows: for AdipoR1: 5'-CCGTAACGGAATTCCTGAAGGTTGGAGAC-3' and 5'-CCATA-GAAGTGGACAAAGGCTGCTGCC-3', for AdipoR2: 5'-CCTGGAGGTTTGGAGACACCATGGA AG-3' and 5'-GAACAAAAGCTCCAGCAACCACAAA GATA-3', for β -actin: 5'-GGTATGCCCTCCCCCA TGCC-3' and 5'-TCCTGCGTCTGGACCTGGCTG-3'.

Relative quantification is the method that determines the changes in steady-state mRNA levels of a gene

across various samples and expresses them relative to the levels of an internal reference control gene, usually a housekeeping gene. Standard curves describing the PCR efficiencies of the target (AdipoR1 and AdipoR2) and the reference genes (β -actin) were created from a dilution series of the calibrator cDNA (HL60 cDNA induced with phorbol myristyl acetate -PMA-), using the Second Derivative Maximum Method with the Arithmetic baseline adjustment for the determination of the various crossing points. To quantify the relative expression levels of Adipo-Rs mRNA in the various samples, we run the target and the reference gene of each sample, along with the calibrator cDNA, and the final results were calculated using the LightCycler Relative Quantification 1.0.1 Software (ROCHE, Mannheim, Germany). Samples were run in duplicates or triplicates and results are expressed in arbitrary units (AU). The results from different PCR runs were run randomly in ethidium bromide stained agarose gels and photographed in a Gel-Doc-It 300 Imaging System (UVP, Cambridge, UK).

Cell culture

Mononuclear cells from peripheral blood were resuspended in RPMI-1640 medium (GIBCO-INVITROGEN Corp, Carlsbad, CA, USA), supplemented with 10% human type AB male serum (SIGMA-ALDRICH Corp, St. Louis, MO, USA) and 1% Penicillin/streptomycin (5000 IU/ml-5000 μ gr/ml) (GIBCO-INVITROGEN Corp, Carlsbad, CA, U.S.A) and incubated in 10 cm cell culture dishes for 1 hour. Non-adherent cells were removed and the remaining adherent cells were collected, counted and aliquoted in a 24-well plate at a density of $2-3 \times 10^6$ cells/well. Cells were left in a 37°C CO₂ incubator for 7 days and the medium was changed every two days. After that period, human monocyte-derived macrophages were incubated with human recombinant full-length adiponectin (30 μ g/ml) (R&D Systems, Minneapolis, MN, USA) for further 48 hours. At the end of the incubation period, cell supernatants were collected, aliquoted and kept at -80°C for measurement of released IL-10.

Immunoassays

Circulating levels of adiponectin were measured in the plasma of all subjects, using a high sensitivity multiplex assay (xMAP technology) and the fluorescently labeled microsphere beads (HCVD1-67AK Lincoplex kit, Millipore Corp., MA, USA), in a LUMINEX 200 instrument (Luminex Corp., USA). Sensitivity of the assay was 56.0 pg/ml, intra-assay and inter-assay coefficients of variation were 9.2% and 15.9%, respectively. All samples were diluted 1:100 and measured in duplicate. Samples that could not be detected, were measured again using a higher dilution.

IL-10 secreted levels were measured in the supernatants from human monocyte-derived macrophages using a MILLIPLEX MAP kit (MPXHCYTO-60 K, Millipore Corp., MA, USA), in a LUMINEX 200 instrument (Luminex Corp., USA). Sensitivity of the assay was 0.5 pg/ml and intra-assay and inter-assay coefficients of variation were 5.2% and 9.5%.

Statistical analysis

Statistical analysis was performed using the SPSS version 14.0.1 software (Chicago, Ill, USA). Data are expressed as mean \pm SD. Variables that were not normally distributed (AdipoR1 and AdipoR2 mRNA levels, adiponectin, HOMA index) were logarithmically transformed. Chi square was implemented for categorical variables. Parametric statistical analyses (Pearson's correlation test, unpaired or paired t-test) were applied where appropriate. Multivariate regression analysis (results as mean \pm SE), as well as analysis of covariance (ANCOVA) were also performed if any adjustments were necessary. A p-value of less than 0.05 was considered statistically significant.

Results

Patients' characteristics

The clinical and metabolic characteristics, as well as the therapeutic regimen of the patients included in the study are presented in Table 1. From the 55 subjects, 46 were males and no differences were observed in BMI between males and females (28.9 ± 2.6 vs. 28.2 ± 2.1 respectively, $p = 0.44$). Overweight/obese patients with CAD were more likely to be males, while no differences were observed with regard to age, BMI, lipid profile, systolic and diastolic blood pressure compared to similar weight patients without CAD. Patients with CAD had higher values of waist to hip ratio, higher carotid IMT values, decreased levels of plasma adiponectin and decreased insulin sensitivity as assessed by Matsuda index (Table 1). Moreover, the decrease in plasma adiponectin levels remained significant after adjustment for gender ($p = 0.046$) and BMI ($p = 0.025$).

Plasma adiponectin levels and associations

Circulating plasma adiponectin levels were positively associated with Matsuda index and HDL-cholesterol levels, overall ($r = 0.315$, $p = 0.022$ and $r = 0.29$ $p = 0.048$, respectively, Table 2). In stepwise multivariable analysis with age, gender, waist to hip ratio, the presence of CAD, Matsuda index and the various medications as independent variables, insulin sensitivity (Matsuda index) (beta \pm SE: 0.43 ± 0.02 , $p = 0.024$) was the sole independent determinant of adiponectin levels ($R^2 = 0.10$).

Table 1 Characteristics of the study population

	Patients without CAD (n = 24)	Patients with CAD (n = 31)	p value
Anthropometric characteristics			
Males (%)	16 (67)	30 (97)	0.009
Age (years)	57.6 ± 7.7	60.2 ± 8.5	0.249
BMI (Kg/m ²)	28.5 ± 2.5	29.1 ± 2.6	0.340
Waist to hip ratio	0.93 ± 0.06	1 ± 0.06	<0.001
Metabolic characteristics			
LDL-cholesterol (mmol/L)	3.41 ± 0.88	3.12 ± 0.72	0.260
HDL-cholesterol (mmol/L)	1.27 ± 0.28	1.11 ± 0.25	0.078
Triglycerides (mmol/L)	1.31 ± 0.45	1.59 ± 0.15	0.231
Systolic BP (mmHg)	123.5 ± 16.4	128.4 ± 12.3	0.228
Diastolic BP (mmHg)	76.5 ± 9.8	79.6 ± 6.8	0.176
Adiponectin (µg/ml)	13.8 ± 5.8	10.9 ± 3.1	0.033*
Indices			
HOMA index	3.52 ± 1.84	5.17 ± 4.78	0.102*
Matsuda index	2.90 ± 1.14	2.28 ± 1.0	0.041
Common carotid IMT (mm)	0.86 ± 0.25	1.10 ± 0.30	0.004
Carotid bulb IMT (mm)	1.14 ± 0.75	1.49 ± 0.48	0.062
Drug use			
Statins (%)	9 (38)	25 (81)	0.003
Antiplatelets (%)	8 (33)	27 (87)	<0.001
ACE inhibitor, AR antagonists (%)	9 (38)	25 (81)	0.003
Nitrates (%)	3 (13)	13 (42)	0.037
β-blockers (%)	5 (21)	21 (68)	0.001
Calcium channel blockers (%)	3 (13)	7 (23)	0.543
Sulfonylureas (%)	0 (0)	4 (13)	0.192
Metformin (%)	1 (4)	5 (16)	0.329

BMI: Body Mass Index; LDL: Low density lipoprotein; HDL: High density lipoprotein; BP: Blood Pressure; IMT: Intima media thickness; ACE: Angiotensin Converting Enzyme; AR: Angiotensin Receptor.

* comparisons in logarithmic scale.

Table 2 Bivariate correlations of adiponectin and its receptors with the studied variables

	AdipoR1 protein	AdipoR2 protein	logAdipoR1 mRNA	logAdipoR2 mRNA	logAdiponectin
AdipoR2 protein	0.757**				
logAdipoR1 mRNA	-0.141	-0.258			
logAdipoR2 mRNA	0.003	0.039	0.52**		
logAdiponectin	0.245	0.359**	-0.156	-0.080	
Age (years)	-0.079	-0.081	0.225	0.236	0.098
LDL-C (mmol/L)	0.045	0.025	-0.063	-0.307	0.058
HDL-C (mmol/L)	0.269	0.153	0.052	0.025	0.29*
Triglycerides (mmol/L)	-0.179	-0.145	0.131	0.325*	-0.133
Systolic BP (mmHg)	-0.132	-0.010	0.068	0.303*	-0.006
Diastolic BP (mmHg)	-0.061	0.040	-0.028	-0.018	-0.124
logHOMA index	-0.140	-0.263	0.270	0.146	-0.152
Matsuda index	0.221	0.310*	-0.342	-0.035	0.315*
Common carotid IMT (mm)	-0.162	-0.124	0.103	0.189	0.075
Carotid bulb IMT (mm)	-0.082	0.02	-0.123	0.254	0.122

LDL: Low density lipoprotein; HDL: High density lipoprotein; BP: Blood Pressure; IMT: Intima media thickness * p < 0.05, ** p < 0.01.

Expression of adiponectin receptors

Both AdipoR1 and AdipoR2 were found to be expressed in peripheral monocytes at mRNA and protein surface level. While AdipoR1 mRNA was more abundant compared with AdipoR2 mRNA in monocytes (3.5 ± 3.2 vs. 1 ± 0.9 AU, $p < 0.001$), the opposite was true for the protein surface expression levels (68.2 ± 36.5 vs. 81.3 ± 44.3 MFI AU respectively, $p = 0.002$). Overweight/obese patients with CAD, apart from the decreased plasma adiponectin levels, had decreased AdipoR1 and AdipoR2 protein surface levels compared to patients without CAD, while they did not show any difference with respect to the levels of AdipoR1 and AdipoR2 mRNA (Figure 2A and 2B). The difference in protein surface expression of AdipoR1 and AdipoR2 with respect to the presence of CAD remained significant for AdipoR1 after adjustment for gender difference ($p = 0.033$) but was attenuated for AdipoR2 ($p = 0.074$). However, after adjustment for Matsuda index the difference in protein surface expression was attenuated for both AdipoR1 and AdipoR2 ($p = 0.13$ and 0.08 respectively).

Moreover, a robust positive correlation was observed between AdipoR1 and AdipoR2 mRNA, as well as between AdipoR1 and AdipoR2 surface levels (Figure 3). AdipoR1 mRNA levels were inversely correlated with Matsuda index, whereas AdipoR2 mRNA levels were correlated with systolic blood pressure and triglycerides (Table 2). AdipoR2 protein surface levels were associated with plasma adiponectin levels and Matsuda index (Figure 4) and retained this association with plasma adiponectin levels (beta \pm SE: 107.58 ± 40.7 , $p = 0.011$) and Matsuda index (beta \pm SE: 13.21 ± 6.46 , $p = 0.047$) in multiple regression analysis independent of age, gender and waist to hip ratio. When the latter analysis was confined to the subgroup of CAD patients, AdipoR2 protein surface levels were also correlated with plasma adiponectin levels (beta \pm SE: 110.02 ± 48.89 , $p = 0.034$) and Matsuda index (beta \pm SE: 25.603 ± 6.060 , $p < 0.001$) independent of age, gender and waist to hip ratio.

Although no associations were revealed overall, between common carotid or bulb IMT with adiponectin receptors mRNA or protein surface levels (Table 2), in subgroup analyses, a positive correlation was found between AdipoR2 protein levels and carotid bulb IMT in CAD patients ($r = 0.428$, $p = 0.026$).

Adiponectin-induced Interleukin-10 production

In monocyte-derived macrophages from overweight/obese CAD patients, basal IL-10 secreted levels were decreased compared to nonCAD subjects (5.0 ± 7.3 pg/ml vs. 20.3 ± 12.2 pg/ml, $p = 0.002$) (Figure 5). Moreover, adiponectin treatment of CAD and nonCAD cells significantly induced IL-10 (13.8-fold, $p = 0.005$ and 19-fold, $p < 0.001$, respectively), although adiponectin-

induced IL-10 release was significantly lower in CAD patients compared to nonCAD subjects (69.2 ± 80.1 pg/ml vs. 386.3 ± 488.2 pg/ml, $p = 0.047$) (Figure 5).

Discussion

Plasma adiponectin levels and associations

Adiponectin is an adipocyte derived protein that exerts anti-inflammatory and anti-atherogenic effects in part by modulating monocyte and macrophage functions. More specifically, adiponectin may prime human monocytes toward the anti-inflammatory M2 phenotype, inhibit the secretion of inflammatory cytokines from monocyte-derived macrophages, prevent monocyte adhesion to endothelial cells and suppress macrophage-to-foam cell transformation [6-10]. In addition, the new adiponectin paralogous protein CTRP-3 has been reported to play a significant role by inhibiting LPS-induced IL-6 and TNF release from human monocytes [33]. Adiponectin receptors have been detected in human monocytes and macrophages [3,4] and recently it was found that variants of the AdipoR2 could be a determinant for atherosclerosis independent of insulin resistance [34]. However the significance of the adiponectin receptors in mediating its beneficial effects in states of CAD has not been examined.

In this study, adiponectin levels were found to be marginally decreased in overweight patients with CAD compared to similar weight control individuals. Although this finding could be expected according to the evidence from previous studies [14], this view is questioned. A couple of studies failed to reveal a relationship of adiponectin levels with early [35] or advanced atherosclerosis [36]. In other studies, adiponectin levels were found to be associated with an adverse outcome in patients with CAD [18-21]. In addition, Rizza et al. reported that adiponectin levels in patients with CAD were not correlated with the severity of CAD, but inversely associated with defects of glucose metabolism [37]. Interestingly, in our study, when adjusting for several factors, adiponectin levels did not differ with respect to the presence of CAD, but were independently associated with Matsuda index. Furthermore, the positive association of plasma adiponectin with HDL-C levels is in agreement with previous epidemiological reports [38,39] and more recent ones suggesting that the apparent correlation of adiponectin with HDL-C is at least partly mediated by a mechanism whereby adiponectin increases the cholesterol efflux from macrophages and thus preventing atherosclerosis [40].

Expression of adiponectin receptors and adiponectin effects

We confirmed the presence of AdipoR1 and AdipoR2 at both mRNA and protein surface level in peripheral

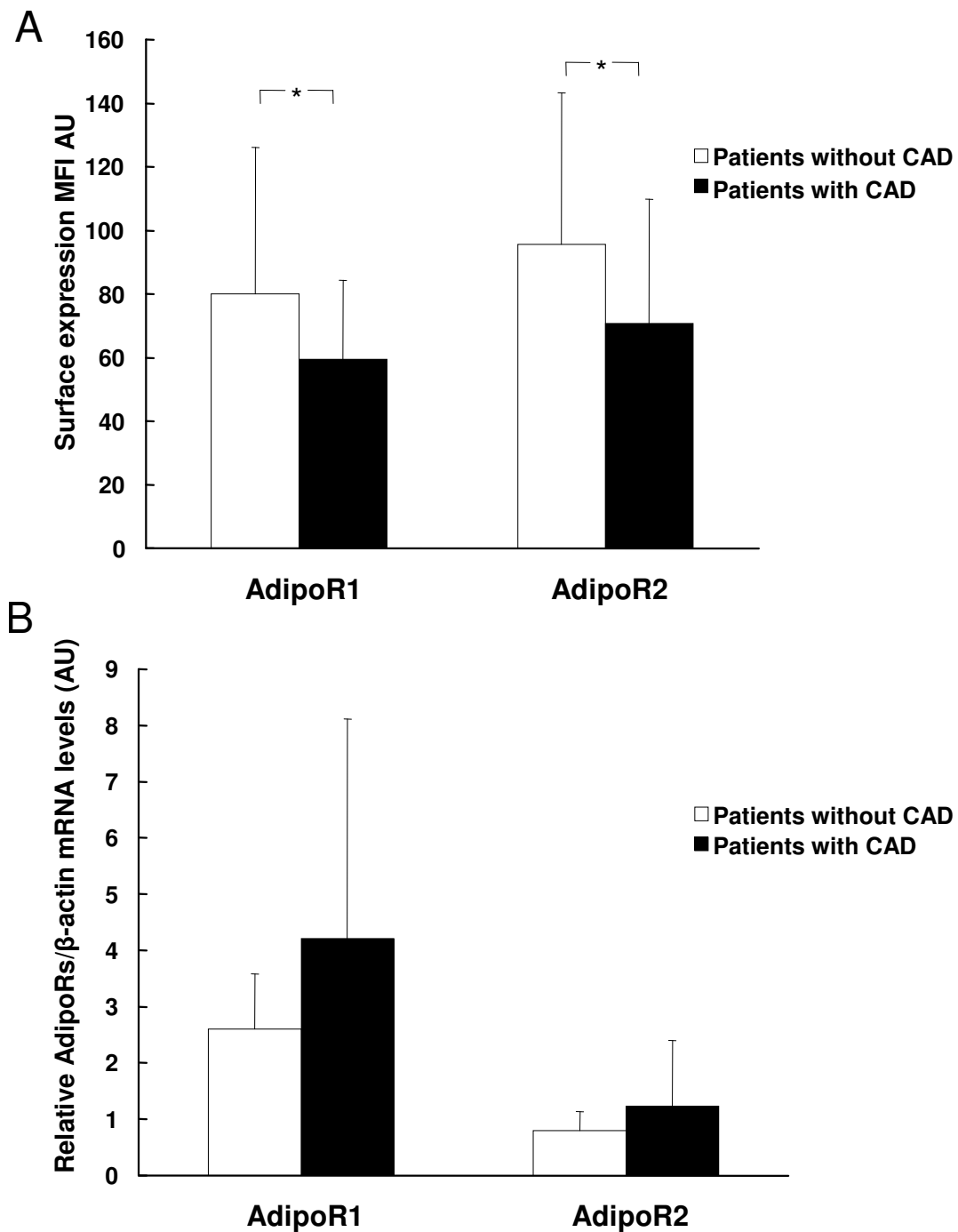


Figure 2 AdipoR1 and AdipoR2 (A) protein surface and (B) mRNA levels from peripheral monocytes from patients with or without CAD. * $p < 0.05$.

monocytes from subjects with BMI above normal. The robust correlation between mRNA or surface expression levels of the two receptors found, could indicate a synchronous regulation of both genes at transcriptional and translational level. It should be reported that a high correlation between these two receptors at mRNA level has

been previously reported in peripheral monocytes from subjects with type 2 diabetes and normal controls, as well as in human skeletal muscle cells [5,26].

However, mRNA and surface expression levels did not exhibit a similar pattern of expression judging from their absolute values and their correlations.

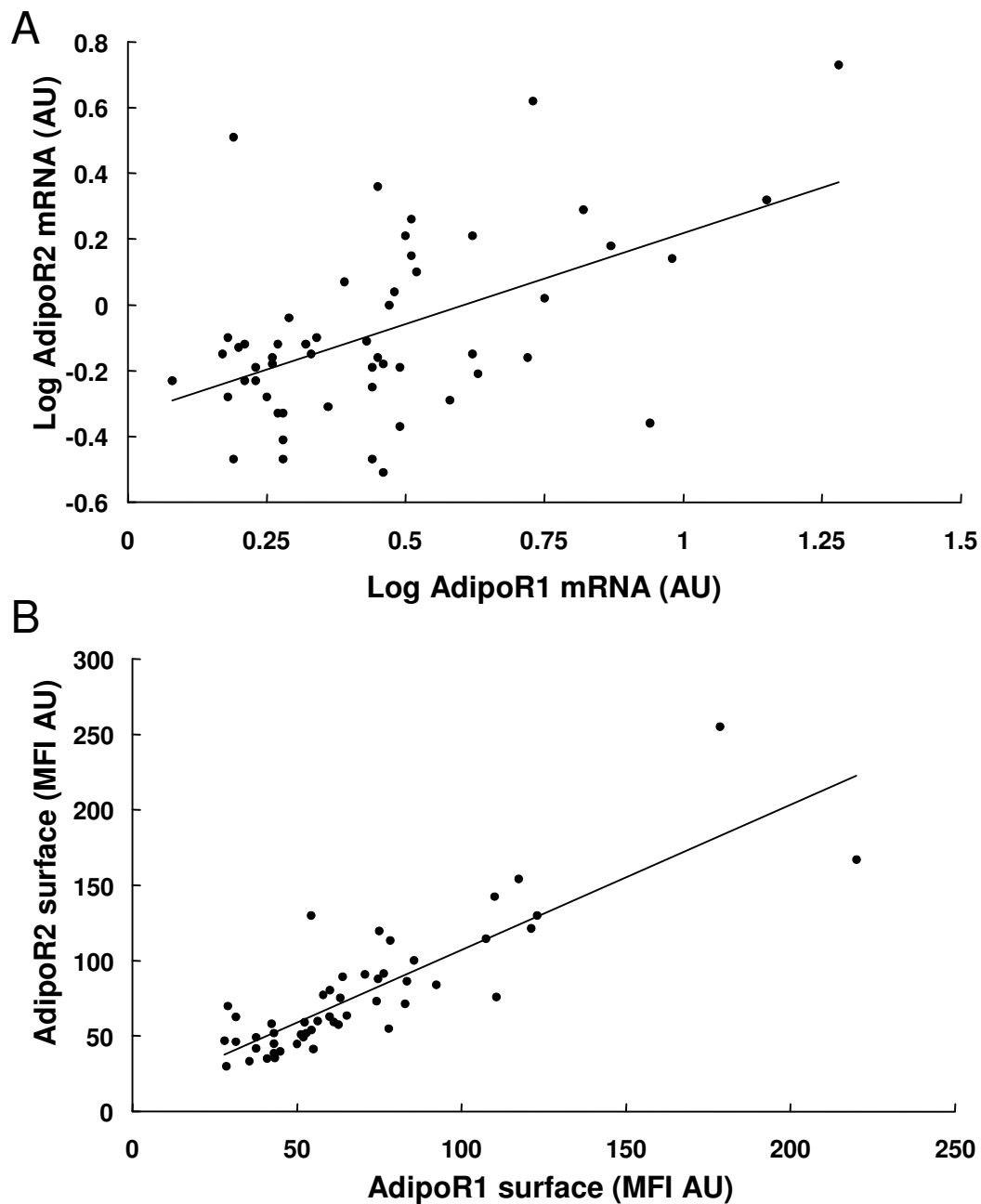


Figure 3 Correlation between AdipoR1 and AdipoR2 (A) mRNA ($r = 0.52$, $p < 0.001$) and (B) surface expression levels ($r = 0.757$, $p < 0.001$).

In fact, AdipoR1 mRNA levels were higher compared with AdipoR2 respective ones, while the opposite was true for the surface expression levels. In addition, AdipoR1 mRNA levels were inversely correlated with Matsuda index and AdipoR2 mRNA were positively correlated with systolic blood pressure and triglycerides, while surface expression levels of AdipoR2 were positively correlated with Matsuda index and adiponectin levels. Moreover, the presence of CAD was

associated with decreased surface expression of both receptors. Although adiponectin receptors are expressed in cells within atherosclerotic carotid plaques [3], we did not uncover any association between adiponectin receptors and carotid IMT values. Yet, in CAD patients, AdipoR2 surface expression levels were correlated with carotid bulb IMT. This finding could represent a compensatory mechanism to decreased adiponectin plasma levels.

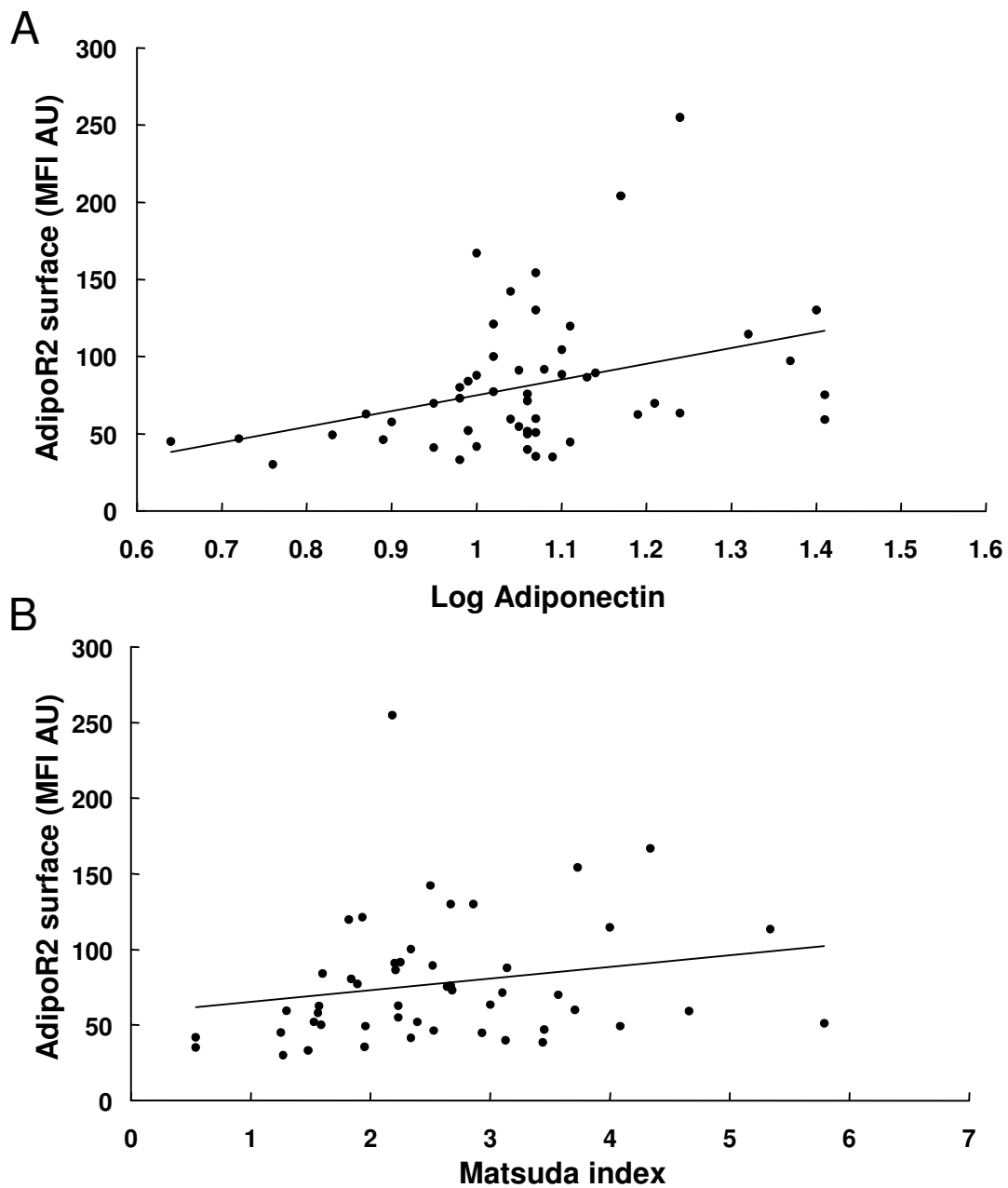
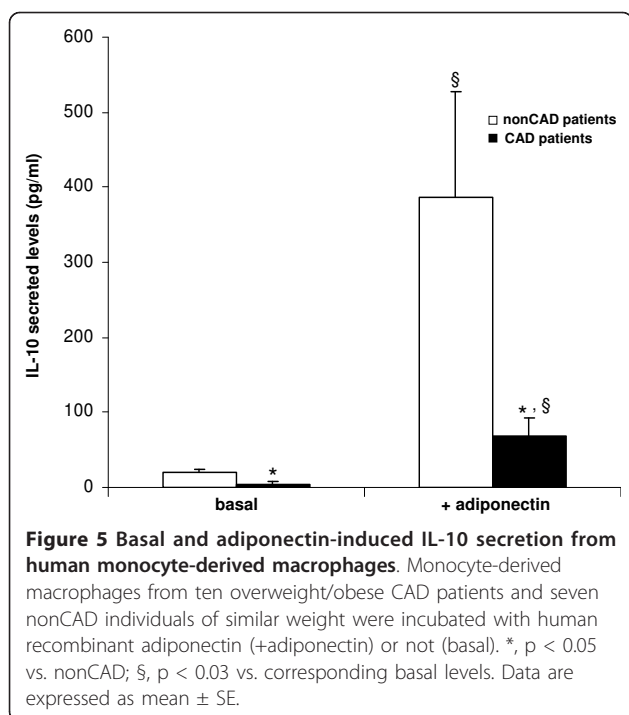


Figure 4 Correlation of AdipoR2 surface expression levels with (A) plasma adiponectin ($r = 0.359$, $p = 0.009$), as well as with (B) Matsuda index ($r = 0.31$, $p = 0.029$).

The aforementioned results point out that the translation and the transcription process of the adiponectin receptors may not follow the same direction in states of insulin resistance and atherosclerosis. The decreased surface expression levels in combination with the decreased adiponectin levels in CAD could contribute to a vicious circle of decreased adiponectin action and aggravated atherosclerotic processes.

One of the anti-inflammatory actions of the adiponectin is the induction of IL-10 [6]. In our *in vitro*

experiments, IL-10 basal protein production was lower in monocyte-derived macrophages from CAD patients compared to that of nonCAD. This fact could be partly attributed to the constant exposure to lower adiponectin plasma levels and to basal reduced AdipoR1 and AdipoR2 surface levels in these cells from CAD patients. Moreover, adiponectin-induced IL-10 secretion was higher in macrophages from nonCAD compared to CAD subjects, although the effect of adiponectin was significant in both CAD and nonCAD cells.



Expression of human adiponectin receptors has been examined mainly at mRNA level only by a limited number of studies which have yielded inconclusive results. Chinetti et al reported that the expression level of AdipoR1 in monocytes decreases during their differentiation into macrophages but remains higher than that of AdipoR2 [3]. However, only AdipoR2 was upregulated by PPAR (peroxisome proliferators-activated receptors) agonists which have insulin-sensitizing properties [3]. These results are in line with our findings, since we also reported a higher level of AdipoR1 mRNA in human monocytes and we found a positive correlation of AdipoR2 surface expression levels with insulin sensitivity. Moreover, protein levels of both adiponectin receptors in monocytes from overweight/obese diabetic patients were reported to be decreased compared to normal weight control subjects [5]. Expression of mRNA levels of adiponectin receptors in human adipose tissue, in states of insulin resistance, has been reported to be either decreased [23-25] or increased [27]. A similar inconsistency has been reported for muscle, where mRNA levels are positively associated with insulin sensitivity [28] or with insulin resistance [22].

Study limitations

Our study results should be interpreted with regards to some limitations. Firstly, we did not include a control group of normal weight subjects. Nevertheless, this does not invalidate our findings, since the aim of the present study was to examine adiponectin receptors with regard

only to the presence of CAD and to correlate their expression with indices of insulin resistance and atherosclerosis. The later became feasible, as our subjects did not differ in terms of BMI values but exhibited a satisfactory variability in insulin sensitivity status, allowing various correlations to be performed. However, it should be noted that CAD patients presented higher values of waist to hip ratio compared to nonCAD patients, suggesting an increased prevalence of visceral adiposity which in turn is a main determinant of adiponectin levels and insulin sensitivity status. In addition, central obesity is associated with increased levels of saturated nonesterified fatty acids, which in combination with hyperinsulinemia, may activate human monocytes to produce proinflammatory cytokines and support the development and propagation of the subacute, chronic inflammatory state [41]. Interestingly, when adjusting for Matsuda index, the difference in the surface expression levels of the adiponectin receptors between CAD and nonCAD patients was attenuated. Moreover, AdipoR2 surface levels in the subgroup of CAD patients were correlated with adiponectin, suggesting that the decrease in AdipoR2 levels in monocytes from CAD patients may be in relation to the decrease in insulin sensitivity. Another limitation of this study is that our patients were not subjected to a satisfactory wash-out period concerning their therapeutic regimen. However, treatment was interrupted at least 24 hours before the measurements and adjustments for drug categories were taken into account in our analyses. Lastly, a limitation of our study could be the relatively small population studied; this could imply a reduced statistical power.

Conclusions

In summary our data provide evidence that mRNA and surface expression of the adiponectin receptors in human monocytes seems to be subjected to different regulatory mechanisms in states of insulin resistance and atherosclerosis. Furthermore, the latter states are associated with lower adiponectin plasma levels and a decrease in surface expression of adiponectin receptors in monocytes. This, in turn could aggravate the anti-atherogenic action of adiponectin in CAD patients.

List of abbreviations

AdipoR1: adiponectin receptor 1; AdipoR2: adiponectin receptor 2; AU: arbitrary units; BMI: body mass index; CAD: coronary artery disease; CVD: cardiovascular disease; HDL: high-density lipoprotein; HOMA-IR: homeostasis model assessment index; IL: interleukin; IMT: intima-media thickness; LPS: lipopolysaccharide; MFI AU: mean fluorescence intensity arbitrary units; OGTT: oral glucose tolerance test; RT-PCR: real time-polymerase chain reaction.

Acknowledgements

This work (PENED#03ED-597) was supported by E.U. European Social Fund (75%) and the Greek Ministry of Development - General Secretariat of

Research and Technology (GSRT) (25%) and the private sector within the framework of the Operational Programme, "Competitiveness" (Measure 8.3) of the 3rd Community Support Programme. We would like to thank Ms V. Frangaki, R.N., for nursing help, and Ms A. Koukourava for excellent technical assistance.

Author details

¹Hellenic National Center for the Research, Prevention and Treatment of Diabetes Mellitus and its Complications (H.N.D.C), 3 Ploutarchou, 10675 Athens, Greece. ²2nd Department of Internal Medicine, Research Institute and Diabetes Center, Athens University Medical School, "Attikon" University General Hospital, 1 Rimini, 12462 Haidari, Athens, Greece. ³2nd Department of Cardiology, Athens University Medical School, "Attikon" University General Hospital, 1 Rimini, 12462 Haidari, Athens, Greece.

Authors' contributions

AK: participated in data acquisition, interpretation of data, performed the statistical analysis and drafted the manuscript. PCT: carried out the molecular expression studies, coordinated the study, performed the statistical analysis and drafted the manuscript. II: participated in ultrasound studies and manuscript editing, EM: carried out the immunofluorescence studies, PM and EK: participated in data acquisition, EB: contributed to manuscript editing, JL, TE: conceived and designed the study, DTK, GD, and SAR: revised and gave the final approval of the manuscript. All authors read and approved the final manuscript.

Competing interests

The authors declare that they have no competing interests.

Received: 17 December 2010 Accepted: 1 February 2011

Published: 1 February 2011

References

- Chandran M, Phillips SA, Ciaraldi T, Henry RR: **Adiponectin: more than just another fat cell hormone?** *Diabetes Care* 2003, **26**:2442-2450.
- Yamauchi T, Kamon J, Ito Y, Tsuchida A, Yokomizo T, Kita S, Sugiyama T, Miyagishi M, Hara K, Tsunoda M, Murakami K, Ohteki T, Uchida S, Takekawa S, Waki H, Tsuno NH, Shibata Y, Terauchi Y, Froguel P, Tobe K, Koyasu S, Taira K, Kitamura T, Shimizu T, Nagai R, Kadowaki T: **Cloning of adiponectin receptors that mediate antidiabetic metabolic effects.** *Nature* 2003, **423**:762-769.
- Chinetti G, Zawadzki C, Fruchart JC, Staels B: **Expression of adiponectin receptors in human macrophages and regulation by agonists of the nuclear receptors PPARalpha, PPARgamma, and LXR.** *Biochem Biophys Res Commun* 2004, **314**:151-158.
- Pang TT, Narendran P: **The distribution of adiponectin receptors on human peripheral blood mononuclear cells.** *Ann N Y Acad Sci* 2008, **1150**:143-145.
- Weigert J, Neumeier M, Wanninger J, Wurm S, Kopp A, Schober F, Filarsky M, Schaffler A, Zeitoun M, Aslanidis C, Buechler C: **Reduced response to adiponectin and lower abundance of adiponectin receptor proteins in type 2 diabetic monocytes.** *FEBS Lett* 2008, **582**:1777-1782.
- Wolf AM, Wolf D, Rumpold H, Enrich B, Tilg H: **Adiponectin induces the anti-inflammatory cytokines IL-10 and IL-1RA in human leukocytes.** *Biochem Biophys Res Commun* 2004, **323**:630-635.
- Tsatsanis C, Zacharioudaki V, Androulidaki A, Dermitzaki E, Charalampopoulos I, Minas V, Gravanis A, Margioris AN: **Adiponectin induces TNF-alpha and IL-6 in macrophages and promotes tolerance to itself and other pro-inflammatory stimuli.** *Biochem Biophys Res Commun* 2005, **335**:1254-1263.
- Wulster-Radcliffe MC, Ajuwon KM, Wang J, Christian JA, Spurlock ME: **Adiponectin differentially regulates cytokines in porcine macrophages.** *Biochem Biophys Res Commun* 2004, **316**:924-929.
- Ouchi N, Kihara S, Arita Y, Nishida M, Matsuyama A, Okamoto Y, Ishigami M, Kuriyama H, Kishida K, Nishizawa H, Hotta K, Muraguchi M, Ohmoto Y, Yamashita S, Funahashi T, Matsuzawa Y: **Adipocyte-derived plasma protein, adiponectin, suppresses lipid accumulation and class A scavenger receptor expression in human monocyte-derived macrophages.** *Circulation* 2001, **103**:1057-1063.
- Lovren F, Pan Y, Quan A, Szmítko PE, Singh KK, Shukla PC, Gupta M, Chan L, Al-Omran M, Teoh H, Verma S: **Adiponectin primes human monocytes into alternative anti-inflammatory M2 macrophages.** *Am J Physiol Heart Circ Physiol* 2010, **299**:H656-663.
- Kumada M, Kihara S, Ouchi N, Kobayashi H, Okamoto Y, Ohashi K, Maeda K, Nagaretani H, Kishida K, Maeda N, Nagasawa A, Funahashi T, Matsuzawa Y: **Adiponectin specifically increased tissue inhibitor of metalloproteinase-1 through interleukin-10 expression in human macrophages.** *Circulation* 2004, **109**:2046-2049.
- Abke S, Neumeier M, Weigert J, Wehrwein G, Eggenhofer E, Schäffler A, Maier K, Aslanidis C, Schölmerich J, Buechler C: **Adiponectin-induced secretion of interleukin-6 (IL-6), monocyte chemoattractant protein-1 (MCP-1, CCL2) and interleukin-8 (IL-8, CXCL8) is impaired in monocytes from patients with type I diabetes.** *Cardiovasc Diabetol* 2006, **5**:17.
- Liang CP, Han S, Senokuchi T, Tall AR: **The macrophage at the crossroads of insulin resistance and atherosclerosis.** *Circ Res* 2007, **100**:1546-1555.
- Arita Y, Kihara S, Ouchi N, Takahashi M, Maeda K, Miyagawa J, Hotta K, Shimomura I, Nakamura T, Miyaoka K, Kuriyama H, Nishida M, Yamashita S, Okubo K, Matsubara K, Muraguchi M, Ohmoto Y, Funahashi T, Matsuzawa Y: **Paradoxical decrease of an adipose-specific protein, adiponectin, in obesity.** *Biochem Biophys Res Commun* 1999, **257**:79-83.
- Hotta K, Funahashi T, Arita Y, Takahashi M, Matsuda M, Okamoto Y, Iwahashi H, Kuriyama H, Ouchi N, Maeda K, Nishida M, Kihara S, Sakai N, Nakajima T, Hasegawa K, Muraguchi M, Ohmoto Y, Nakamura T, Yamashita S, Hanafusa T, Matsuzawa Y: **Plasma concentrations of a novel, adipose-specific protein, adiponectin, in type 2 diabetic patients.** *Arterioscler Thromb Vasc Biol* 2000, **20**:1595-1599.
- Kumada M, Kihara S, Sumitsuji S, Kawamoto T, Matsumoto S, Ouchi N, Arita Y, Okamoto Y, Shimomura I, Hiraoka H, Nakamura T, Funahashi T, Matsuzawa Y: **Association of hypo adiponectinemia with coronary artery disease in men.** *Arterioscler Thromb Vasc Biol* 2003, **23**:85-89.
- Weyer C, Funahashi T, Tanaka S, Hotta K, Matsuzawa Y, Pratley RE, Tataranni PA: **Hypo adiponectinemia in obesity and type 2 diabetes: close association with insulin resistance and hyperinsulinemia.** *J Clin Endocrinol Metab* 2001, **86**:1930-1935.
- Cavusoglu E, Ruwende C, Chopra V, Yanamadala S, Eng C, Clark LT, Pinsky DJ, Marmur JD: **Adiponectin is an independent predictor of all-cause mortality, cardiac mortality, and myocardial infarction in patients presenting with chest pain.** *Eur Heart J* 2006, **27**:2300-2309.
- Schnabel R, Messow CM, Lubos E, Espinola-Klein C, Rupprecht HJ, Bickel C, Sinning C, Tzikas S, Keller T, Genth-Zotz S, Lackner KJ, Munzel TF, Blankenberg S: **Association of adiponectin with adverse outcome in coronary artery disease patients: results from the AtheroGene study.** *Eur Heart J* 2008, **29**:649-657.
- Pilz S, Mangge H, Wellnitz B, Seelhorst U, Winkelmann BR, Tiran B, Boehm BO, Marz W: **Adiponectin and mortality in patients undergoing coronary angiography.** *J Clin Endocrinol Metab* 2006, **91**:4277-4286.
- Dekker JM, Funahashi T, Nijpels G, Pilz S, Stehouwer CD, Snijder MB, Bouter LM, Matsuzawa Y, Shimomura I, Heine RJ: **Prognostic value of adiponectin for cardiovascular disease and mortality.** *J Clin Endocrinol Metab* 2008, **93**:489-496.
- Bluher M, Bullen JW Jr, Lee JH, Kralisch S, Fasshauer M, Kloting N, Niebauer J, Schon MR, Williams CJ, Mantzoros CS: **Circulating adiponectin and expression of adiponectin receptors in human skeletal muscle: associations with metabolic parameters and insulin resistance and regulation by physical training.** *J Clin Endocrinol Metab* 2006, **91**:2310-2316.
- Bluher M, Williams CJ, Kloting N, Hsi A, Ruschke K, Oberbach A, Fasshauer M, Berndt J, Schon MR, Wolk A, Stumvoll M, Mantzoros CS: **Gene expression of adiponectin receptors in human visceral and subcutaneous adipose tissue is related to insulin resistance and metabolic parameters and is altered in response to physical training.** *Diabetes Care* 2007, **30**:3110-3115.
- Nannipieri M, Bonotti A, Anselmino M, Cecchetti F, Madec S, Mancini E, Baldi S, Santini F, Pinchera A, Rossi M, Ferrannini E: **Pattern of expression of adiponectin receptors in human adipose tissue depots and its relation to the metabolic state.** *Int J Obes (Lond)* 2007, **31**:1843-1848.
- Rasmussen MS, Lihn AS, Pedersen SB, Bruun JM, Rasmussen M, Richelsen B: **Adiponectin receptors in human adipose tissue: effects of obesity, weight loss, and fat depots.** *Obesity (Silver Spring)* 2006, **14**:28-35.
- Staiger H, Kaltenbach S, Staiger K, Stefan N, Fritsche A, Guirguis A, Peterfi C, Weisser M, Machicao F, Stumvoll M, Haring HU: **Expression of adiponectin receptor mRNA in human skeletal muscle cells is related to in vivo parameters of glucose and lipid metabolism.** *Diabetes* 2004, **53**:2195-2201.

27. Tan BK, Chen J, Digby JE, Keay SD, Kennedy CR, Randeve HS: **Upregulation of adiponectin receptor 1 and 2 mRNA and protein in adipose tissue and adipocytes in insulin-resistant women with polycystic ovary syndrome.** *Diabetologia* 2006, **49**:2723-2728.
28. Civitarese AE, Jenkinson CP, Richardson D, Bajaj M, Cusi K, Kashyap S, Berria R, Belfort R, DeFronzo RA, Mandarino LJ, Ravussin E: **Adiponectin receptors gene expression and insulin sensitivity in non-diabetic Mexican Americans with or without a family history of Type 2 diabetes.** *Diabetologia* 2004, **47**:816-820.
29. Matthews DR, Hosker JP, Rudenski AS, Naylor BA, Treacher DF, Turner RC: **Homeostasis model assessment: insulin resistance and beta-cell function from fasting plasma glucose and insulin concentrations in man.** *Diabetologia* 1985, **28**:412-419.
30. Matsuda M, DeFronzo RA: **Insulin sensitivity indices obtained from oral glucose tolerance testing: comparison with the euglycemic insulin clamp.** *Diabetes Care* 1999, **22**:1462-1470.
31. Maratou E, Dimitriadis G, Kollias A, Boutati E, Lambadiari V, Mitrou P, Raptis SA: **Glucose transporter expression on the plasma membrane of resting and activated white blood cells.** *Eur J Clin Invest* 2007, **37**:282-290.
32. Tsiotra PC, Tsigos C, Yfanti E, Anastasiou E, Vikentiou M, Psarra K, Papasteriades C, Raptis SA: **Visfatin, TNF-alpha and IL-6 mRNA expression is increased in mononuclear cells from type 2 diabetic women.** *Horm Metab Res* 2007, **39**:758-763.
33. Kopp A, Bala M, Weigert J, Büchler C, Neumeier M, Aslanidis C, Schölmerich J, Schäffler A: **Effects of the new adiponectin paralogous protein CTRP-3 and of LPS on cytokine release from monocytes of patients with type 2 diabetes mellitus.** *Cytokine* 2010, **49**:51-57.
34. Halvatsiotis I, Tsiotra PC, Ikonomidis I, Kollias A, Mitrou P, Maratou E, Boutati E, Lekakis J, Dimitriadis G, Economopoulos T, Kremastinos DT, Raptis SA: **Genetic variation in the adiponectin receptor 2 (ADIPOR2) gene is associated with coronary artery disease and increased ADIPOR2 expression in peripheral monocytes.** *Cardiovasc Diabetol* 2010, **9**:10.
35. Qasim A, Mehta NN, Tadesse MG, Wolfe ML, Rhodes T, Girman C, Reilly MP: **Adipokines, insulin resistance, and coronary artery calcification.** *J Am Coll Cardiol* 2008, **52**:231-236.
36. Hwang JJ, Yang WS, Chiang FT, Chen MF, Lin HJ, Huang PJ, Hsu SH, Lai SK, Wu YW: **Association of circulating matrix metalloproteinase-1, but not adiponectin, with advanced coronary artery disease.** *Atherosclerosis* 2009, **204**:293-297.
37. Rizza S, Clementi F, Porzio O, Cardellini M, Savo A, Serino M, Chiricolo G, Romeo F, Lauro R, Federici M: **Adiponectin isoforms are not associated with the severity of coronary atherosclerosis but with undiagnosed diabetes in patients affected by stable CAD.** *Nutr Metab Cardiovasc Dis* 2009, **19**:54-60.
38. Rothenbacher D, Brenner H, Marz W, Koenig W: **Adiponectin, risk of coronary heart disease and correlations with cardiovascular risk markers.** *Eur Heart J* 2005, **26**:1640-1646.
39. Altinova AE, Toruner F, Bukan N, Yasar DG, Akturk M, Cakir N, Arslan M: **Decreased plasma adiponectin is associated with insulin resistance and HDL cholesterol in overweight subjects.** *Endocr J* 2007, **54**:221-226.
40. Tsubakio-Yamamoto K, Matsuura F, Koseki M, Oku H, Sandoval JC, Inagaki M, Nakatani K, Nakaoka H, Kawase R, Yuasa-Kawase M, Masuda D, Ohama T, Maeda N, Nakagawa-Toyama Y, Ishigami M, Nishida M, Kihara S, Shimomura I, Yamashita S: **Adiponectin prevents atherosclerosis by increasing cholesterol efflux from macrophages.** *Biochem Biophys Res Commun* 2008, **375**:390-394.
41. Bunn RC, Cockrell GE, Ou Y, Thrailkill KM, Lumpkin CK Jr, Fowlkes JL: **Palmitate and insulin synergistically induce IL-6 expression in human monocytes.** *Cardiovasc Diabetol* 2010, **9**:73.

doi:10.1186/1475-2840-10-14

Cite this article as: Kollias et al.: Adiponectin levels and expression of adiponectin receptors in isolated monocytes from overweight patients with coronary artery disease. *Cardiovascular Diabetology* 2011 **10**:14.

Submit your next manuscript to BioMed Central and take full advantage of:

- Convenient online submission
- Thorough peer review
- No space constraints or color figure charges
- Immediate publication on acceptance
- Inclusion in PubMed, CAS, Scopus and Google Scholar
- Research which is freely available for redistribution

Submit your manuscript at
www.biomedcentral.com/submit

