

## Review

### Structure-based development of specific inhibitors for individual cathepsins and their medical applications

By Nobuhiko KATUNUMA<sup>\*1,†</sup>

(Communicated by Takao SEKIYA, M.J.A.)

**Abstract:** Specific inhibitors for individual cathepsins have been developed based on their tertiary structures of X-ray crystallography. Cathepsin B-specific inhibitors, CA-074 and CA-030, and cathepsin L specific inhibitors, CLIK-148 and CLIK-195, were designed as the epoxysuccinate derivatives. Cathepsin S inhibitor, CLIK-060, and cathepsin K inhibitor, CLIK-166, were synthesized. These inhibitors can use *in vitro* and also *in vivo*, and show no toxicity for experimental animals by the amounts used as the cathepsin inhibitor.

Various cathepsins are used in the processing of antigenic proteins. The CLIK-060 treatment to the autoimmune disease, Sjögren model mice, led to strongly suppress the expression of the pathological symptoms. Cathepsins L or K participates to the degradation of bone collagen. The CLIK-148 protects osteoporosis in animals and also protects the bone metastasis of cancer cells. Cathepsin L also enhances insulin-induced glucose uptake into 3T3-L1 adipocytes, suggesting cathepsin L plays the roles in adipogenesis and glucose tolerance in type 2 diabetes.

**Keywords:** cathepsin, inhibitor, cystatin, autoimmune diseases, osteoporosis, Sjögren syndrome

#### Introduction

Cysteine cathepsins make up an essential protease family located in lysosomes of all living cells. Eleven kinds of cysteine cathepsins have been registered in the human genome since 2001.<sup>1)</sup> Each cathepsin has different cleavage bond-specificity for substrate proteins, allowing induction of different physiological or pathological conditions. In general, the inhibitors for all cathepsins have been published and used, such as E-64,<sup>2)-4)</sup> leupeptin and antipain,<sup>5),6)</sup> but no research has been published about specific inhibitors for individual cathepsins. We have developed specific inhibitors for individual cathepsins in cooperation with Asao (Taiho Pharmaceutical Co.),<sup>7)-10)</sup> by a structure-based new drug design method using X-ray crystallography of individual cathepsin structures (substrate binding

pocket), with epoxysuccinate (E-64) as the frame compound. We have shown specific binding mechanisms between individual cathepsins and their corresponding synthesized inhibitors.<sup>8),11)</sup> Only CA-074 is now commercially available from Sigma-Aldrich Co. and is used as the cathepsin B-specific inhibitor worldwide. Cathepsin L inhibitors,<sup>7),9)</sup> CLIK-148 and CLIK-195, and cathepsin S inhibitor, CLIK-060,<sup>7)</sup> are also being used in many laboratories in the world and the effectiveness have been already published in various journals.

#### Contents

**Part I Structure-based development of specific inhibitors for individual cathepsins.** The classical cysteine protease inhibitors from microorganisms origin and natural inhibitors located in mammalian organs, and cystatin families, were introduced in Fig. 1.

Specific inhibitors for individual cathepsins have been developed in our group. Cathepsin B specific inhibitors, CA-074 and CA-030,<sup>12),13)</sup> and cathepsin L specific inhibitors, CLIK-148 and CLIK-195,<sup>7)</sup> were

<sup>\*1</sup> Institute for Health Sciences, Tokushima Bunri University, Tokushima, Japan.

<sup>†</sup> Correspondence should be addressed: N. Katunuma, Institute for Health Sciences, Tokushima Bunri University, 180 Nishihamabouji, Yamashiro-cho, Tokushima 770-8514, Japan (e-mail: katunuma@tokushima.bunri-u.ac.jp).

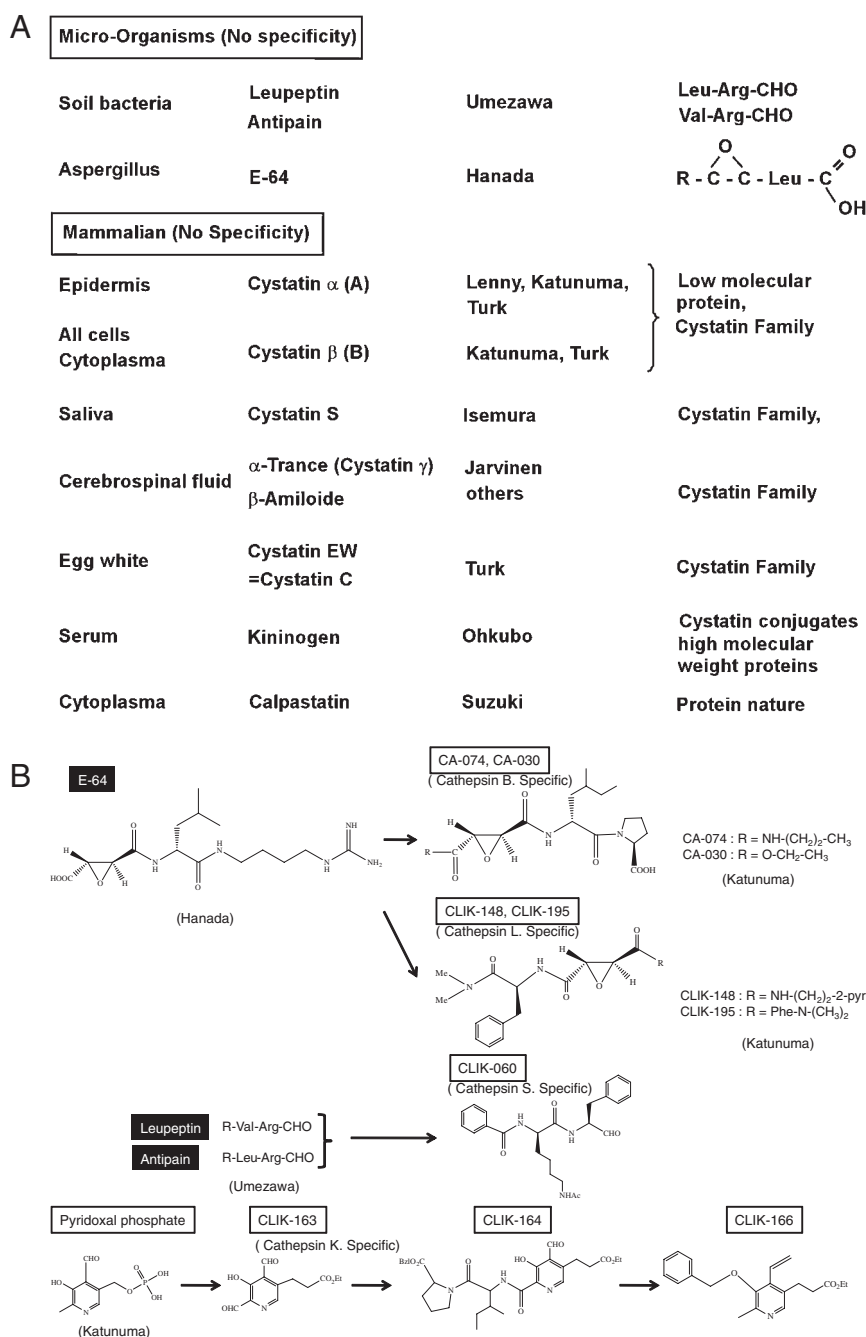


Fig. 1. A. Development of cysteine cathepsin group specific inhibitors. a. Microorganism origin. A group of inhibitors comprise aliphatic aldehyde and dipeptide derivatives, which was discovered by Umezawa's group. The other inhibitor comprise epoxysuccinyl amino acid derivatives, which was discovered by Hanada's group<sup>2)</sup> from *Aspergillus* and named E-64. Main cysteine cathepsins and these inhibitors were discovered at the same time, between 1980 and 2000.<sup>2),3)</sup> b. Mammalian origin (cystatin family). Most cystatin families have a molecular weight of about 10,000; the high molecular weight inhibitors, kininogen group that participates in blood coagulation is characterized with a high molecular weight of the cystatin conjugates. B. Development of specific inhibitors for individual cathepsins by structure-based designs from tertiary structures of the binding pocket of cathepsins using their X-ray crystal structures, which were developed by Katunuma's group. Cathepsin B-specific inhibitors (CA-074 and CA-030) and cathepsin L-specific inhibitors (CLIK 148 and CLIK-195) were designed E-64 as a frame. Cathepsin S-specific inhibitor (CLIK-060) was designed based on the structure of leupeptin and antipain. Cathepsin K-specific inhibitors (CLIK-163) was designed from pyridoxal phosphate.

Table 1. Inhibition specificities for various cathepsins

	Inhibition concentration		Cathepsins			
	$10^{-X}$ M		B	L	S	K
CA-030	-7	100	0	0	0	0
CA-074	-7	100	0	0	0	0
CLIK-148	-6	0	100	30	0	0
	-7	0	63	0	0	0
CLIK-195	-6	0	100	25	0	0
	-7	0	85	0	0	0
CLIK-060	-6	25	30	100	10	0
	-7	0	0	86	0	0
CLIK-164	-5	0	20	60	100	0
	-6	0	0	20	60	0
CLIK-166	-4	0	0	17	100	0
	-5	0	0	0	100	0

developed from the structure of epoxysuccinate derivatives as the frame compound. These derivatives were designed as individual cathepsin inhibitors, using X-ray crystallography of the tertiary structure of their substrate binding pocket.<sup>8),11),14)</sup>

As summarized in Table 1, CA-030 and CA-074 specifically inhibit cathepsin B at  $10^{-7}$  M, and CLIK-148 and CLIK-195 inhibit cathepsin L<sup>7)</sup> at  $10^{-6}$  M, CLIK-060 inhibits cathepsin S<sup>7)</sup> at  $10^{-6}$  M, and CLIK-164 inhibits cathepsin K<sup>9)</sup> at  $10^{-5}$  M. Cathepsin K inhibitor CLIK-164 is a pyridoxal derivatives,<sup>9)</sup> and cathepsin K inhibitor CLIK-166 is an aromatic vinyl-derivative of pyridine ring. Their chemical structures are illustrated in Fig. 1B.

Cathepsin B-specific inhibitor, CA-030, is explained here as a typical example of structure-based inhibitor design<sup>11),14)</sup> that uses X-ray crystallographical data of cathepsin B. The binding structure of cathepsin B with CA-030 is shown in Fig. 2. The substrate or inhibitor is inserted into the substrate binding pocket in the vertical way. The upper part of the substrate binding pocket of cathepsin B is closed by a large occluding loop, and two moles of histidines are located side by side at the positions 110 and 111 to form an area of strong positive charge. Therefore, a proline was designed in the C-terminus of CA-074 and CA-030 to bind with the strong positive charges of these histidines in the occluding loop. When an epoxysuccinyl isoleucine is bound next to the proline, the epoxysuccinyl group of the inhibitor can easily approach Gln-23 located on the surface of the substrate binding pocket of cathepsin B to make an oxyanion hole. As a result, the active site of the

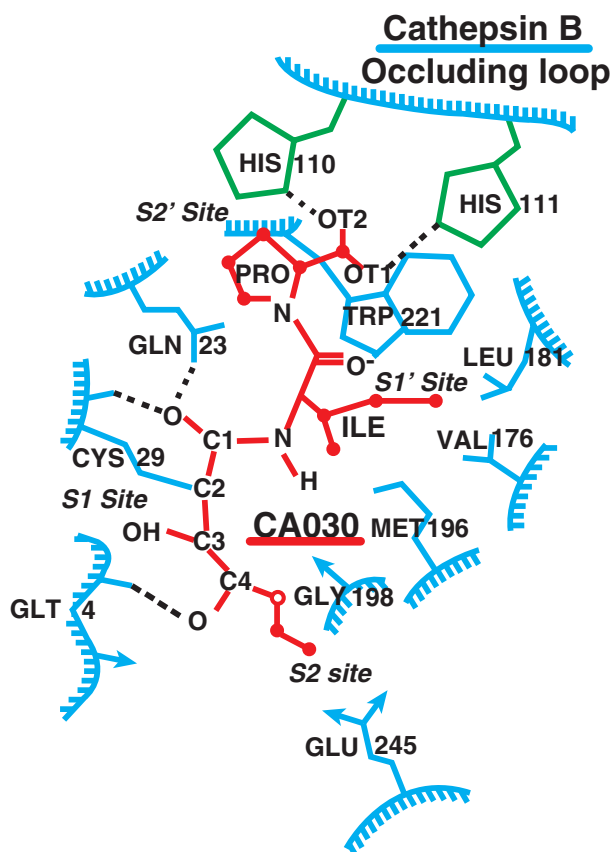


Fig. 2. Schematic presentation of CA-030 binding with cathepsin B. Proline on the C-terminus of CA-030 has strong affinity for histidines (2 mol) located in the occluding loop of cathepsin B. CA-030 forms an oxyanion hole with Gln-23 in the binding pocket of cathepsin B.

Cys-29 of cathepsin B easily binds with that of epoxysuccinate; while other cathepsins do not possess such an occluding loop in the substrate binding pocket.

The mechanisms of specific binding of CLIK-148 with cathepsin L can be shown by X-ray co-crystallography (Fig. 3).<sup>8)</sup> The Try-189 is located at the end (bottom) of the substrate binding area which forms a hydrophobic area. The epoxysuccinate of CLIK-148 can easily bind with the active site of Cys-25 of cathepsin L, and the epoxysuccinate of CLIK-148 binds to Gln-19 to make an oxyanion hole. Thus, CLIK-148 binds very tightly and specifically with cathepsin L.

The aromatic aldehyde attached to pyridoxal-3 propionate derivatives shows a specific affinity to cathepsin K. Cathepsin K-specific inhibitor, CLIK-164,<sup>9)</sup> an aromatic aldehyde derivatives. The cathepsin S-specific inhibitor, CLIK-060,<sup>7)</sup> have been

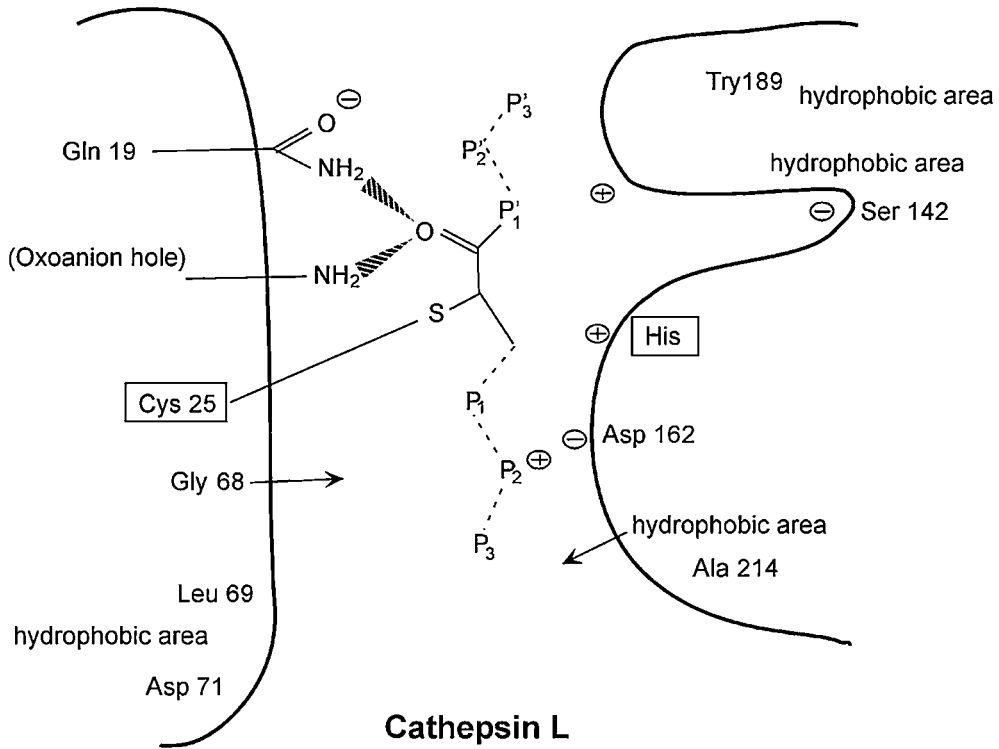


Fig. 3. Schematic illustration of specific binding of CLIK-148 with cathepsin L by X-ray co-crystallography.

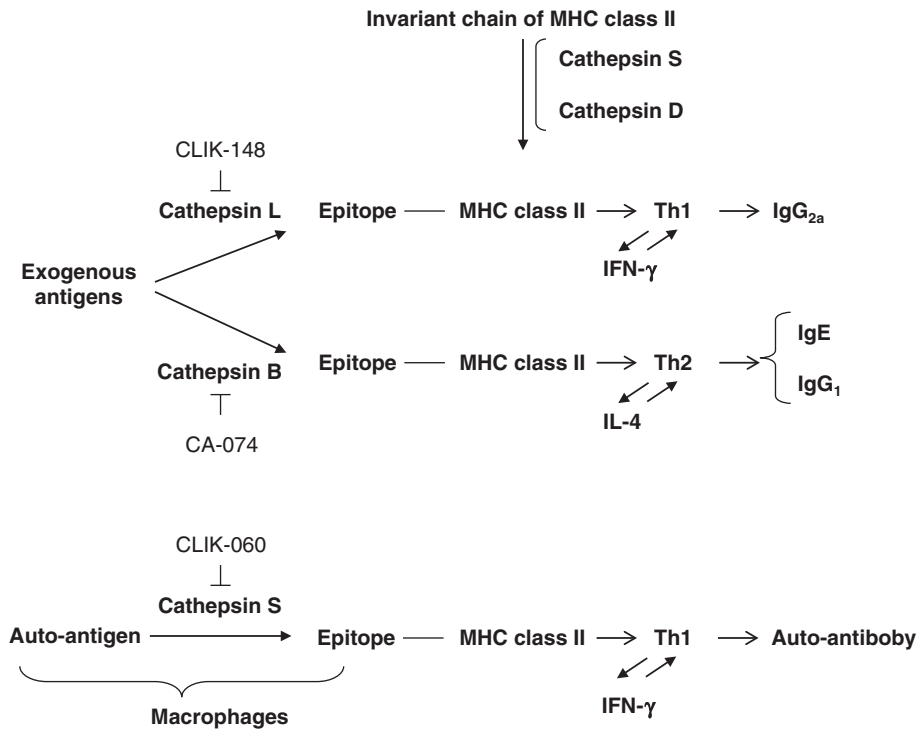


Fig. 4. Class-switch Th-cell responses of antigen processing by different cathepsins.

synthesized as an aldehyde derivatives. These inhibitors show strong and specific inhibition with their individual cathepsins both *in vitro* and *in vivo* at  $10^{-6}$ – $10^{-7}$ M (Table 1). They do not show any considerable toxicity at their inhibition concentrations used in rats and mice.

**Part II Medical applications of specific inhibitors for individual cathepsins.** These specific

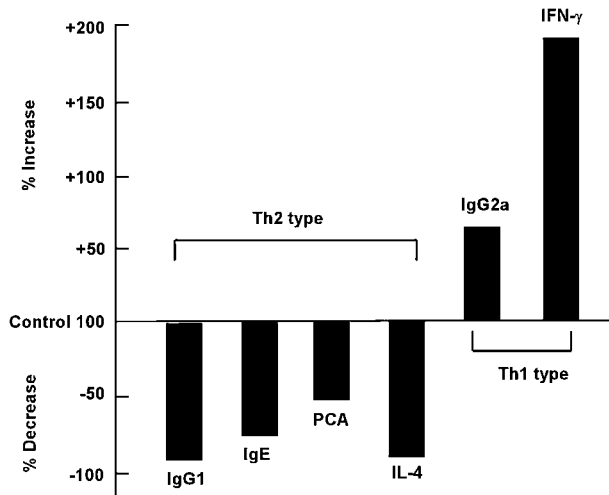


Fig. 5. Changes in ovalbumin dependent production of antibodies and cytokines by administration of cathepsin B inhibitor (CA-074). The ovalbumin dependent production of antibodies and cytokines was class-switched by the administration of CA-074. Type 2 responses were suppressed, while type 1 responses were enhanced.

inhibitors of individual cathepsins are useful for analyzing biological roles of cathepsins, such as the clarification of the pathogenesis of various diseases mediated by abnormal expression of specific cathe-

Table 2. Pathological symptoms of Sjögren syndrome model mice and their suppression by CLIK-060

	Grade of legions	
	Lacrimal G	Submandibular G
non-Tx SS	0.3	0.3
Tx	3.8	3.0
SS + CA-074	2.8	2.5
SS + CLIK-148	3.5	2.8
SS + CLIK-060	0.9	1.0

	Secretion volume of saliva and tears	
	Saliva	Tears
non-Tx SS	9.0	3.0
Tx	2.0	1.0
SS + CLIK-060	7.0	2.9

Non-Tx-SS: Non-thymectomized Sjögren model mice.

Tx-SS: Thymectomized Sjögren model mice.

Secretion volume given in  $\mu$ l/20 min.

The morphological pathological legion in lacrimal gland and submandibular glands were prevented by cathepsin S inhibitor, CLIK-060, but not by the other inhibitors tested. Secretion volume of saliva and tears were decreased dramatically in the disease model animals, but the treatment of CLIK-060 prevented these Sjögren syndromes to the normal levels, as shown in Table 2.

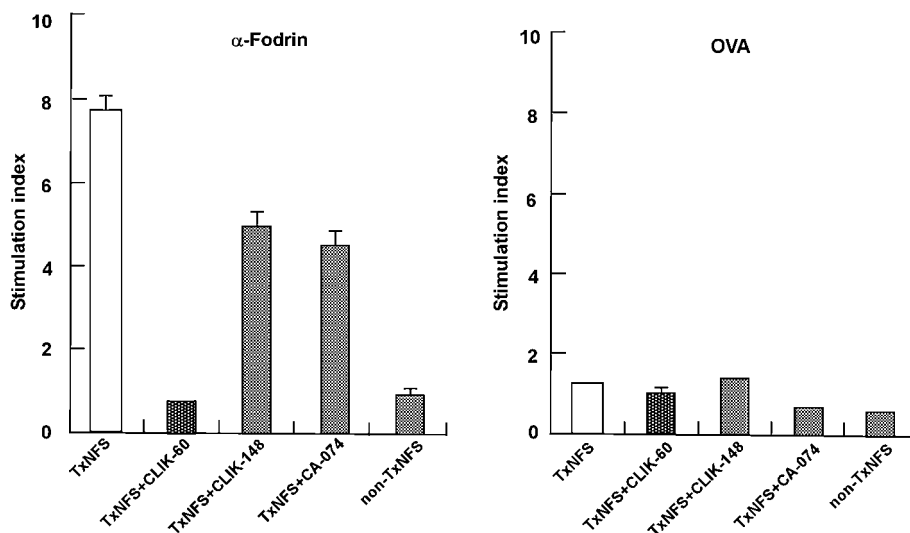


Fig. 6. Immune response (stimulation index) of Sjögren syndrome through auto-antigen  $\alpha$ -fodrin processing by cathepsin S and its suppression by CLIK-060. Using Sjögren model mice, the stimulation index of thymidine incorporation was determined.  $\alpha$ -Fodrin (but not ovalbumin) specifically stimulated the index and cathepsin S inhibitor CLIK-060 specifically suppressed it.

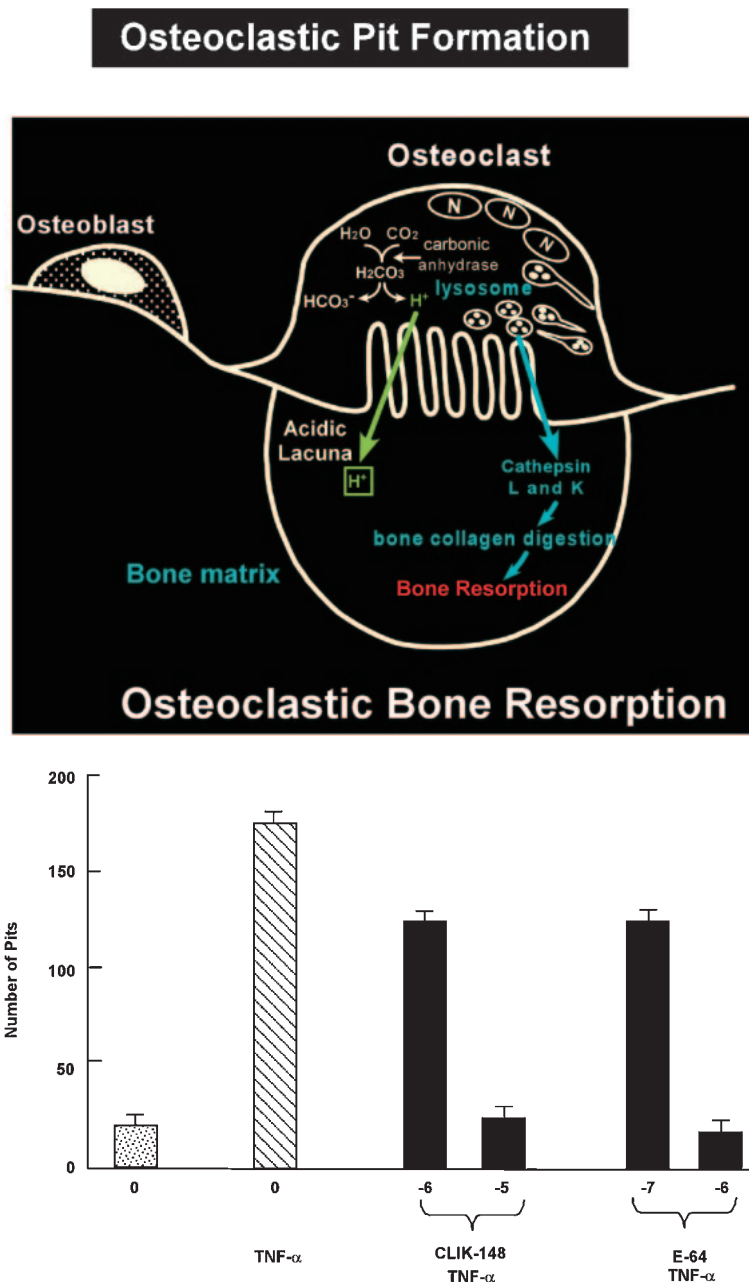


Fig. 7. Mechanisms of osteoclastic bone resorption and pit formation by the cultured pit formation test (upper). Pit formation was stimulated by TNF- $\alpha$  addition and inhibited by cathepsin L inhibitor CLIK-148 addition (under).

psins, and for development of powerful therapeutic drugs that originated from abnormal expression of special cathepsins.

(a) *Regulation of antigen processing by various cathepsins and the class switch of Th-cell responses by corresponding cathepsin inhibitors.*<sup>15)-19)</sup> Antigen processing by cathepsins and the epitope presenta-

tion to major histocompatibility complex (MHC) class II are shown in Fig. 4. The invariant chain binding to MHC class II molecules was removed by cathepsins S and D, and exogenous antigens are processed by various cathepsins. Therefore, different cathepsins produce different epitopes, even if processed from the same antigen, as shown

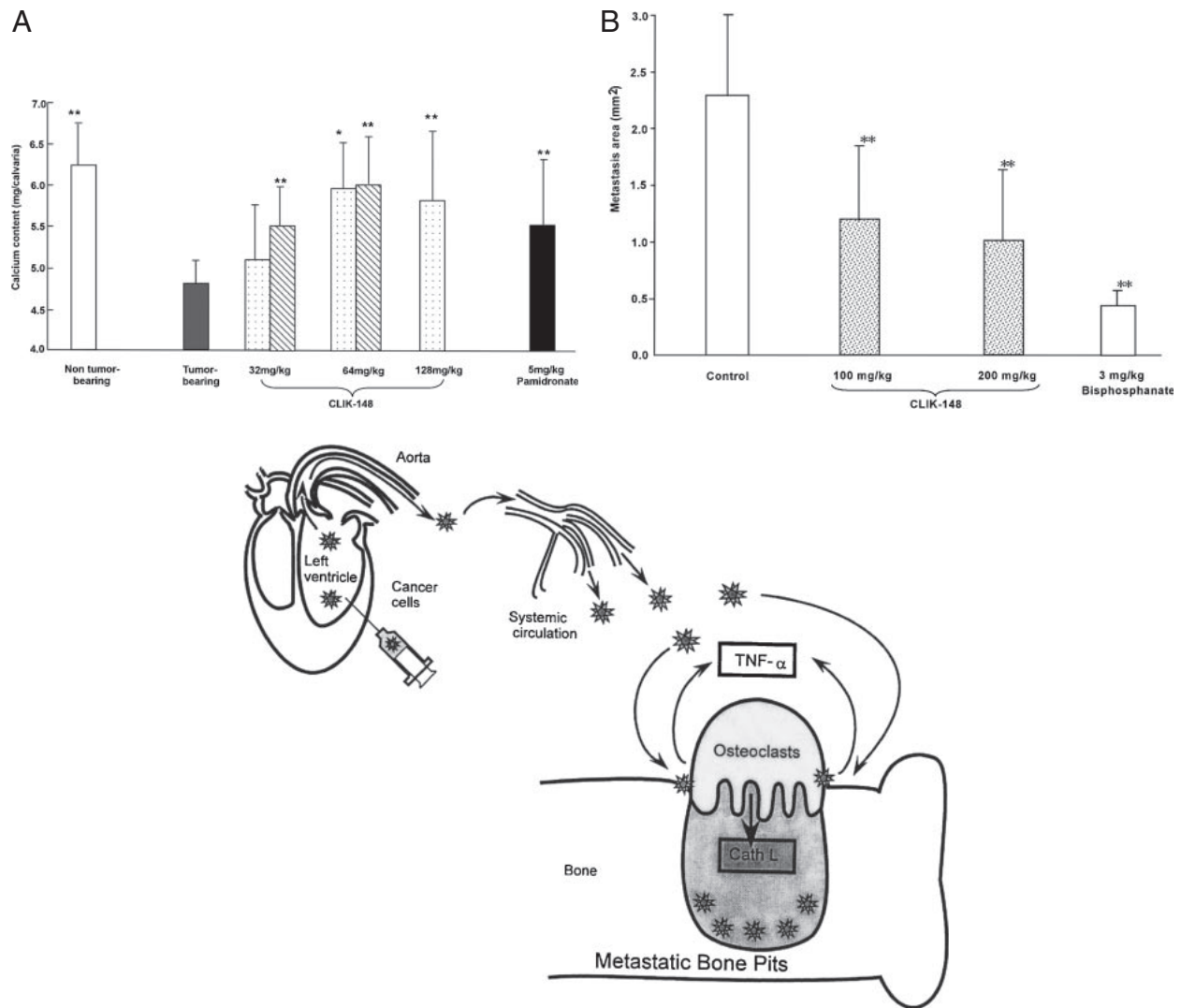


Fig. 8. Bone metastasis of cancer cells by secreted cathepsin L and its suppression by CLIK-148. A. Ca release from mouse calvaria by invasion of colon tumor-26 PMF-15 cells and its protection by CLIK-148 treatment. B. Melanoma cells (A357) were injected into the left ventricle of the heart causing distant bone metastasis *via* systemic circulation.

in Fig. 5. For instance, when cathepsin B participates in antigen processing to stimulate Th2 responses, IgG<sub>2a</sub> and  $\gamma$ -IFN production were promoted and IgE, IgG<sub>1</sub> and IL-4 production were suppressed. Thus, classes of immune responses are switched between Th1 cells and Th2 cells by different cathepsin inhibitors, as shown in Figs. 4 and 5.

(b) *Autoimmune diseases.*<sup>20,21)</sup> Autoimmune diseases are expressed by the presence of a special epitope derived from an auto-antigen processed by a particular cathepsin. Therefore, inhibition of auto-antigen processing by a special cathepsin can inhibit

auto-antibody production, suppressing the expression of the autoimmune disease. A typical autoimmune disease, Sjögren syndrome, was expressed by the processing of auto-antigen “ $\alpha$ -fodrin” by cathepsin S, producing the responsible auto-antibody in a Sjögren mouse model. Cathepsin S inhibitor CLIK-060 specifically suppressed the expression of Sjögren syndrome (Fig. 6). Cell proliferation responses by  $\alpha$ -fodrin in Sjögren model mice could be completely suppressed by cathepsin S inhibitor, but not by other cathepsin inhibitors and Sjögren syndrome could be almost completely subsided by CLIK-060 treatment (Table 2). No other therapy than glucocorticoid

hormone administration is currently available for autoimmune diseases, but long term treatment of glucocorticoid hormone is not recommended, cathepsin S-specific inhibitor may provide a potential effective treatment.<sup>20),21)</sup>

(c) *Protection of osteoporosis and bone metastasis of cancer.*<sup>10),22)–24)</sup> Bone and teeth mainly consist of type I collagen, which is mainly degraded by cathepsins L or K. Both cathepsins are therefore referred to as “collagenolytic cathepsins”.<sup>25)</sup> Some cancer cells secrete large amounts of collagenolytic cathepsins playing an important role in cancer metastasis and invasion in bone. Administration of inhibitor for cathepsin L or K has been shown significant protection against cancer metastasis and invasion in bone. An example of the pit formation mechanisms is shown in Fig. 7.<sup>26)</sup>

Inoculation of colon tumor 26PMF-15 cells into mouse calvaria resulted in 60–70% calcium released from the calvaria. This calcium release can be protected by CLIK-148 administration, as shown in Fig. 8A. Distant bone metastasis of melanoma cells A375, is illustrated in Fig. 8B. Upon injection into the left ventricles of rat hearts and the cancer cells were transported through the systemic circulation, the melanoma cells implant on the distant bone surface and make bone lacunae *via* osteoclasts. The CLIK-148 treatment protected half (50%) of these metastatic focuses formation (Fig. 8B). Bone degradation was mainly the result of osteoclasts which are located on the surface of bone, secreting large amounts of cathepsins L and K. On the contrary, parathyroid hormone can stimulate the metastasis. These cathepsins are secreted into bone acidic lacuna by the help of ATP proton pump by carbonic anhydrase. Therefore, administration of CLIK-148 and/or carbonic anhydrase inhibitors could suppress bone pit formation.

(d) *Cathepsin L activity controls adipogenesis and glucose tolerance.*<sup>23)</sup> *In vitro* studies demonstrate the role of cathepsin L in the degradation of the matrix protein fibronectin, insulin receptor (IR) and insulin-like growth factor-1 receptor (IGF-IR), essential molecules for adipogenesis and glucose metabolism. Cathepsin L inhibition leads to the reduction of human and murine pre-adipocyte adipogenesis or lipid accumulation, protection of fibronectin from degradation, accumulation of IR $\beta$  and IGF-IR $\beta$  subunits, and an increase in glucose uptake (Fig. 9).<sup>23)</sup> Cathepsin L-deficient mice are lean and have reduced levels of serum glucose and insulin, but increased levels of muscle IR $\beta$  subunit, fibronectin

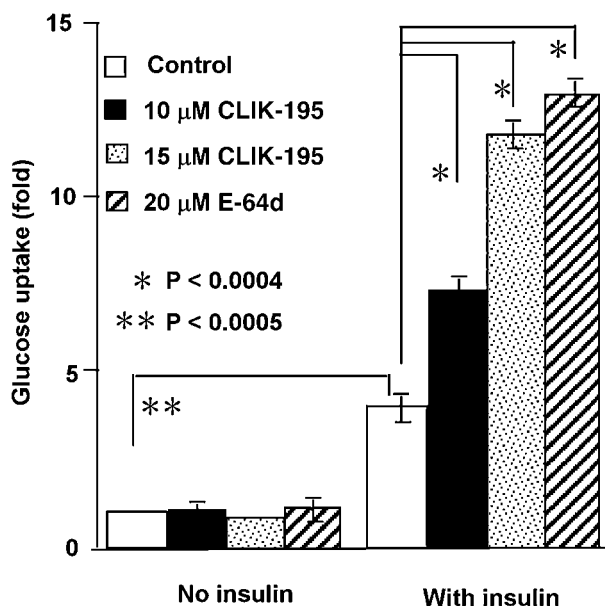


Fig. 9. Cathepsin L inhibition with CLIK-195 enhanced insulin-induced glucose uptake into 3T3-L1 adipocytes.<sup>23)</sup> Data represent glucose uptake (cpm) fold-increases relative to the cpm counts for cells treated with no insulin and no inhibitors.

and glucose transporter (Glut-4). Inhibition of cathepsin L by administration of CLIK-148 also demonstrated reduced body weight gain and serum insulin levels, and increased glucose tolerance due to increased levels of muscle IR $\beta$  subunit, fibronectin, and Glut-4 in both diet-induced obese mice and ob/ob mice. Increased levels of cathepsin L in obese and diabetic patients suggest that cathepsin L is a novel target for these metabolic disorders.

#### Perspective and anticipation in the future (Discussion)

- (1) These chemically synthesized inhibitors show no particular toxicity in experimental animals, although long term toxicity needs further study. The effect on humans is also a major topic of future studies.
- (2) Inhibition specificities of some individual cathepsin inhibitors need to be improved. CA-074 and CA-030 (cathepsin B inhibitors) show absolute specificity at  $10^{-7}$  M, while CLIK-148 and CLIK-195 (cathepsin L inhibitors) show high specificity at  $10^{-7}$  M. However, CLIK-060 (cathepsin S inhibitor) show 86% inhibition at  $10^{-7}$  M, while CLIK-060 is unstable. CLIK-164 and CLIK-166 (cathepsin K inhibitors) requires a concentration of  $10^{-5}$  M. Cathepsin S inhibitor



and cathepsin K inhibitor need further improvement in sensitivity and stability.

- (3) Immunity or suppression of IgE allergy expression needs to be reinforced. Cathepsin B inhibitor (CA-074 or CA-030) administration can be used for suppression of IgE allergy.
- (4) No effective therapy other than glucocorticoid hormone administration is available for autoimmune diseases at present in general. Incidence mechanisms have been clarified for autoimmune diseases, *i.e.*, Sjögren syndrome. Therefore, cathepsin S inhibitors (CLIK-060) should be used in a clinical setting. This principal can use for other autoimmune diseases in general.
- (5) Cathepsin inhibitors have been synthesized by Taiho Pharmaceutical Co. in cooperation with Katunuma. Only CA-074, as a cathepsin B-specific inhibitor, is now commercially available from Sigma-Aldrich Co. Other cathepsin inhibitors (CLIKs) should be synthesized as commercially available products.

#### References

- 1) Turk, V., Turk, B. and Turk, D. (2001) Lysosomal cysteine proteases facts and opportunities. *EMBO J.* **20**, 4629–4633.
- 2) Hanada, K., Tamai, M., Yamagishi, M., Ohmura, S., Sawada, J. and Tanaka, I. (1978) Isolation and characterization of E-64, a new thiol protease inhibitor. *Agric. Biol. Chem. Tokyo* **42**, 523–528.
- 3) Hashida, S., Towatari, T., Kominami, E. and Katunuma, N. (1980) Inhibition by E-64 derivatives of rat liver cathepsin B and cathepsin L *in vitro* and *in vivo*. *J. Biochem.* **88**, 1805–1811.
- 4) Hara, K., Kominami, E., Ii, K. and Katunuma, N. (1988) Effect of proteinase inhibitors on intracellular processing of cathepsin B, H and L in rat macrophages. *FEBS Lett.* **231**, 229–231.
- 5) Hori, M., Hemmi, H., Suzukake, K., Hayashi, H., Uehara, Y., Takeuti, T. and Umezawa, H. (1978) Biosynthesis of leupeptin. *J. Antibiot. (Tokyo)* **31**, 95–98.
- 6) Umezawa, H., Aoyagi, T., Morishita, T., Kunimoto, S., Matsuzaki, M., Hamada, M. and Takeuchi, T. (1970) Chymostatin, a new chymotrypsin inhibitor produced by actinomycetes. *J. Antibiot. (Tokyo)* **23**, 425–427.
- 7) Katunuma, N., Murata, E., Kakegawa, H., Matsui, A., Tsuzuki, H., Tsuge, H., Turk, D., Turk, V., Fukushima, M., Tada, Y. and Asao, T. (1999) Structure based development of novel specific inhibitors for cathepsin L and cathepsin S *in vitro* and *in vivo*. *FEBS Lett.* **458**, 6–10.
- 8) Tsuge, H., Nishimura, T., Tada, Y., Asao, T., Turk, D., Turk, V. and Katunuma, N. (1996) Inhibition mechanism of cathepsin L-specific inhibitors based on the crystal structure of papain-CLIK148 complex. *Biochem. Biophys. Res. Commun.* **266**, 411–416.
- 9) Katunuma, N., Matsui, A., Inubushi, T., Murata, E., Kakegawa, H., Ohba, Y., Turk, D., Turk, V., Tada, Y. and Asao, T. (2000) Structure-based development of pyridoxal propionate derivatives as specific inhibitors of cathepsin K *in vitro* and *in vivo*. *Biochem. Biophys. Res. Commun.* **267**, 850–854.
- 10) Katunuma, N., Tsuge, H., Nukatsuka, M., Asao, T. and Fukushima, M. (2002) Structure-based design of specific cathepsin inhibitors and their application to protection of bone metastases of cancer cells. *Arch. Biochem. Biophys.* **397** (2), 305–311.
- 11) Turk, D., Podobnik, M., Popovic, T., Katunuma, N., Bode, W., Huber, R. and Turk, V. (1995) Crystal structure of cathepsin B inhibited with CA030 at 2.0-Å resolution: A basis for the design of specific epoxysuccinyl inhibitors. *Biochemistry* **34**, 4791–4797.
- 12) Murata, M., Miyashita, S., Yokoo, C., Tamai, M., Hanada, K. and Katunuma, N. (1991) Novel epoxysuccinyl peptides. Selective inhibitors of cathepsin B, *in vitro*. *FEBS Lett.* **280**, 307–310.
- 13) Katunuma, N. and Kominami, E. (1995) Structure, properties, mechanisms, and assays of cysteine protease inhibitors: cystatins and E-64 derivatives. *Methods Enzymol.* **251**, 382–397.
- 14) Musil, D., Zucic, D., Turk, D., Engh, R.A., Mayr, I., Huber, R., Popovic, T., Turk, V., Towatari, T., Katunuma, N. and Bode, W. (1991) The refined 2.15 Å X-ray crystal structure of human liver cathepsin B: the structural basis for its specificity. *EMBO J.* **10**, 2321–2330.
- 15) Katunuma, N., Matsui, A., Endo, K., Hanba, J., Sato, A., Nakano, M., Yuto, Y., Tada, Y., Asao, T., Himeno, K., Maekawa, Y. and Inubushi, T. (2000) Inhibition of intracellular cathepsin activities and suppression of immune responses mediated by helper T lymphocyte type-2 by peroral or intraperitoneal administration of vitamin B<sub>6</sub>. *Biochem. Biophys. Res. Commun.* **271**, 151–155.
- 16) Maekawa, Y., Himeno, K., Ishikawa, H., Hisaeda, H., Sakai, T., Dainichi, T., Asao, T., Good, R.A. and Katunuma, N. (1998) Switch of CD4<sup>+</sup> T cell differentiation from Th2 to Th1 by treatment with cathepsin B inhibitor in experimental leishmaniasis. *J. Immunol.* **161**, 2120–2127.
- 17) Katunuma, N. (1997) New aspects on antigen presentation mechanism for immune-responses and allergy expression. *Medical Aspects of Proteases and Protease Inhibitors*. IOS Press, Amsterdam, pp. 153–172.
- 18) Kitamura, H., Kamon, H., Sawa, S., Park, S.J., Katunuma, N., Ishihara, K., Murakami, M. and Hirano, T. (2005) IL-6-STAT3 controls intracellular MHC class II  $\alpha\beta$  dimer level through cathepsin S activity in dendritic cells. *Immunity* **23**, 491–502.
- 19) Zhang, T., Maekawa, Y., Yasutomo, K., Ishikawa, H., Fawzy Nashed, B., Dainichi, T., Hisaeda, H., Sakai, T., Kasai, M., Mizuochi, T., Asao, T., Katunuma, N. and Himeno, K. (2000) Pepstatin-A

- sensitive aspartic proteases in lysosome are involved in degradation of the invariant chain and antigen-processing in antigen presenting cells of mice infected with *Leishmania major*. *Biochem. Biophys. Res. Commun.* **276**, 693–701.
- 20) Saegusa, K., Ishimura, N., Yanagi, K., Arakaki, R., Ogawa, K., Saito, I., Katunuma, N. and Hayashi, Y. (2002) Cathepsin S inhibitor prevents autoantigen presentation and autoimmunity. *J. Clin. Invest.* **110** (3), 361–369.
- 21) Ishimaru, N., Arakaki, R., Katunuma, N. and Hayashi, Y. (2004) Critical role of cathepsin inhibitors for autoantigen processing and autoimmunity. *Adv. Enzyme Regul.* **44**, 309–320.
- 22) Katunuma, N. (1997) Molecular mechanisms of bone collagen degradation in bone resorption. *J. Bone Miner. Metab.* **15**, 1–8.
- 23) Yang, M., Zhang, Y., Pan, J., Sun, J., Liu, J., Libby, P., Sukhova, G.K., Doria, A., Katunuma, N., Peroni, O.D., Guerre-Millo, M., Kahn, B.B., Clement, K. and Shi, G.P. (2007) Cathepsin L activity controls adipogenesis and glucose tolerance. *Nat. Cell Biol.* **9**, 970–977.
- 24) Delaissé, J.M., Eeckhout, Y. and Vaes, G. (1984) In vivo and in vitro evidence for the involvement of cysteine proteinases in bone resorption. *Biochem. Biophys. Res. Commun.* **125** (2), 441–447.
- 25) Kirschke, H., Kembhavi, A.A., Bohley, P. and Barrett, A.J. (1982) Action of rat liver cathepsin L on collagen and other substrates. *Biochem. J.* **201** (2), 367–372.
- 26) Katunuma, N. (1992) *Intracellular Protein Degradation Mechanisms*. Tokyo Kagaku Dojin, Tokyo.

(Received Sep. 3, 2010; accepted Dec. 21, 2010)

## Profile

Nobuhiko Katunuma, male, was born in Nagasaki city, Japan, 1926. He graduated from School of Medicine, Nagoya University in 1953 and received the Ph.D. in Medical Sciences in 1958. He was appointed as an Associate Professor of Institute for Protein Research in Osaka University in Japan, 1959–1963. In 1963, He was appointed as a Professor of School of Medicine, Tokushima University. He was appointed as Dean of School of Medicine from 1980 to 1982, Tokushima University. He was appointed as a Professor of Tokushima Bunri University, Director of Institute for Health Sciences in 1992.

He is nominated to an Honorary Member of Japanese Society of Biochemistry and Molecular Biology, an Honorary Member of Japanese Society of Vitamin and BioFactors, an Honorary Member of American Society of Biochemistry and Molecular Biology, an Honorary Member of American Society of Cancer Research.

He awarded the National Violet Ribbon Decoration for excellent scientists and artists from Japanese Emperor in 1991.

