

A TaqI RFLP detecting single copy fragment (G80) from chromosome 7 p13-p15 (D7S373)

E.Raimondi, B.Bardoni, E.Rinaldi and G.Camerino

Dipartimento di Genetica e Microbiologia 'A.Buzzati Traverso', Università di Pavia, 27100 Pavia, Italy

SOURCE AND DESCRIPTION OF CLONE: G80 is a 2.3 kb single copy fragment isolated from the library of Davies *et al.* (1981) and subcloned into the EcoRI site of pBR329.

POLYMORPHISM: TaqI identifies a simple two alleles polymorphism with bands at 7 Kb (A1) and/or 6.5 Kb (A2).

FREQUENCY: Studied in 40 unrelated caucasian chromosomes:

7.0 Kb allele (A1)	23%
6.5 Kb allele (A2)	77%

NOT POLYMORPHIC FOR: BamHI, BclI, BglII, EcoRI, EcoRV, HindIII, PstI, PvuII, SstI, and XbaI with a panel of at least 10 unrelated chromosomes.

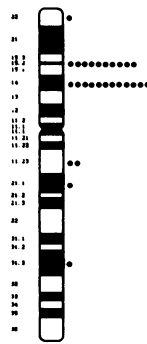
CHROMOSOMAL LOCALIZATION: Probe G80 has been localized to chromosome 7 bands p13-p15 by *in situ* hybridization (Fig.1).

MENDELIAN INHERITANCE: Co-dominant segregation observed in 8 families (Fig.2).

PROBE AVAILABILITY: Freely available.

REFERENCE: Davies, K.E., Young, B.D., Elles, R.G., Hill, M.E. & Williamson, R. (1981), *Nature* **293**, 374-375.

ACKNOWLEDGEMENTS: This work was supported by grants from CNR, Progetto Finalizzato Ingegneria Genetica e Basi Molecolari delle Malattie Ereditarie.



7
Fig.1

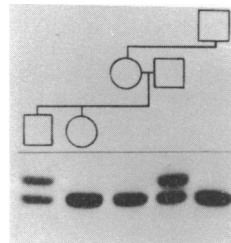


Fig.2