

SHORT REPORT

Open Access

Complete genome sequence of a marine roseophage provides evidence into the evolution of gene transfer agents in alphaproteobacteria

Sijun Huang^{1,2†}, Yongyu Zhang^{1,3†}, Feng Chen², Nianzhi Jiao^{1*}

Abstract

Roseophage RDJLΦ1 is a siphovirus isolated from South China Sea on *Roseobacter denitrificans* OCh114. Its virion encapsulates 62.7 kb genome that encodes 87 gene products. RDJLΦ1 shares similar genome organization and gene content with the marine bacteriophage ΦJL001 and *Pseudomonas* phages YuA and M6, which are different from those of typical λ- or Mu-like phages. Four hallmark genes (ORFs 81 to 84) of RDJLΦ1 were highly homologous to RcGTA-like genes 12 to 15. The largest gene (ORF 84) was predicted to encode a tail fibre protein that could be involved in host recognition. Extended phylogenetic and comparative genomic analyses based on 77 RcGTA-like element-containing bacterial genomes revealed that RcGTA-like genes 12 to 15 together appear to be a conserved modular element that could also be found in some phage or prophage genomes. Our study suggests that RcGTA-like genes-containing phages and prophages and complete RcGTAs possibly descended from a same prophage ancestor that had diverged and then evolved vertically. The complete genome of RDJLΦ1 provides evidence into the hypothesis that extant RcGTA may be a prophage remnant.

Findings

Viruses are the most abundant entities of the world's oceans, ranging from $\sim 3 \times 10^6$ to $\sim 10^8$ viruses per ml [1]. Bacteriophages (viruses that infect bacteria) are known to play an important role in regulating the species composition of bacteria [1-4] and in the host evolution through phage-mediated horizontal gene transfer [5-7]. Bacteria in the *Roseobacter* clade (roseobacter hereafter) are abundant, and typically comprise 10-20% of marine bacterial communities [8,9]. More than 30 genomes of representative roseobacters have been sequenced [10], and the genomics studies also showed that nearly all roseobacter genomes carry a conserved gene transfer agent (GTA) gene cluster of RcGTA (GTA produced by *Rhodobacter capsulatus*) type [10-14] which could assemble a phage-like particle that transfers random pieces of genome DNA from producing cells to recipient cells through a generalized transduction-like process [15]. The widespread occurrence of RcGTA was

hypothesized to be a potential efficient mechanism for horizontal gene transfer [13].

Up to date, only a limited number of roseophage (phage that infects roseobacter) genomes have been reported [16-18], which were all in *Podoviridae* family. In this study, we presented the genome sequence of Roseophage RDJLΦ1 that infects *Roseobacter denitrificans* OCh114. RDJLΦ1 was isolated from the South China Sea surface water (17.597°N, 116.029°E) collected in September 2007 as previously described [19]. RDJLΦ1 was characterized as a host-specific siphovirus, which has an isometric head and a long, flexible, non-contractile tail, and belongs to *Siphoviridae* family, *Caudovirales* order [19]. RDJLΦ1 is a lytic phage with burst size of *ca.* 203 and latent period of *ca.* 80 min [19]. This is the first presented genome of a siphovirus infecting marine *Roseobacter*.

The circularly assembled genome of RDJLΦ1 comprises 62,668 bp, with a G+C content of 57.9%, strongly resembling the G+C average (58.0%) of its host. The whole genome was sequenced by using shotgun library method with 7-fold coverage. In total, 87 open reading frames (ORFs) were predicted from the genome using Glimmer [20] and GeneMark [21] (Additional file 1,

* Correspondence: jiao@xmu.edu.cn

† Contributed equally

¹State Key Laboratory of Marine Environmental Science, Xiamen University, Xiamen 361005, PR China

Full list of author information is available at the end of the article

Figure 1). No tRNA sequences were identified using the tRNAscan-SE program [22]. Fifty-five gene products have homologous sequences in NCBI non-redundant protein database, whereas only 24 of them have predicted functions. Thirty-eight ORFs are homologous to genes in bacteriophages. Among them, 15 ORFs are homologues of genes in another siphovirus Φ JL001 that infects an uncharacterized marine sponge-associated alphaproteobacterium, JL001 [23] (Figure 1, indicated by grey shadows). Most of these homologues between RDJL Φ 1 and Φ JL001 scatter in similar loci of the genomes. Based on the sequence homology, RDJL Φ 1 is most closely related to Φ JL001 among all the known phage genomes. Moreover, 7 of those 15 ORFs are also homologous to genes from *Pseudomonas* phage YuA [24] and/or M6 [25]; YuA and M6 are 91% identical to each other at the DNA level [24]. Five phage structural proteins, which are tail fibre protein (gp84), tail tape measure protein (gp80), major tail protein (gp78), major capsid protein (gp74) and an unknown structural protein (gp67), could be assigned based on the previously reported proteome analysis (Table 1; the five proteins

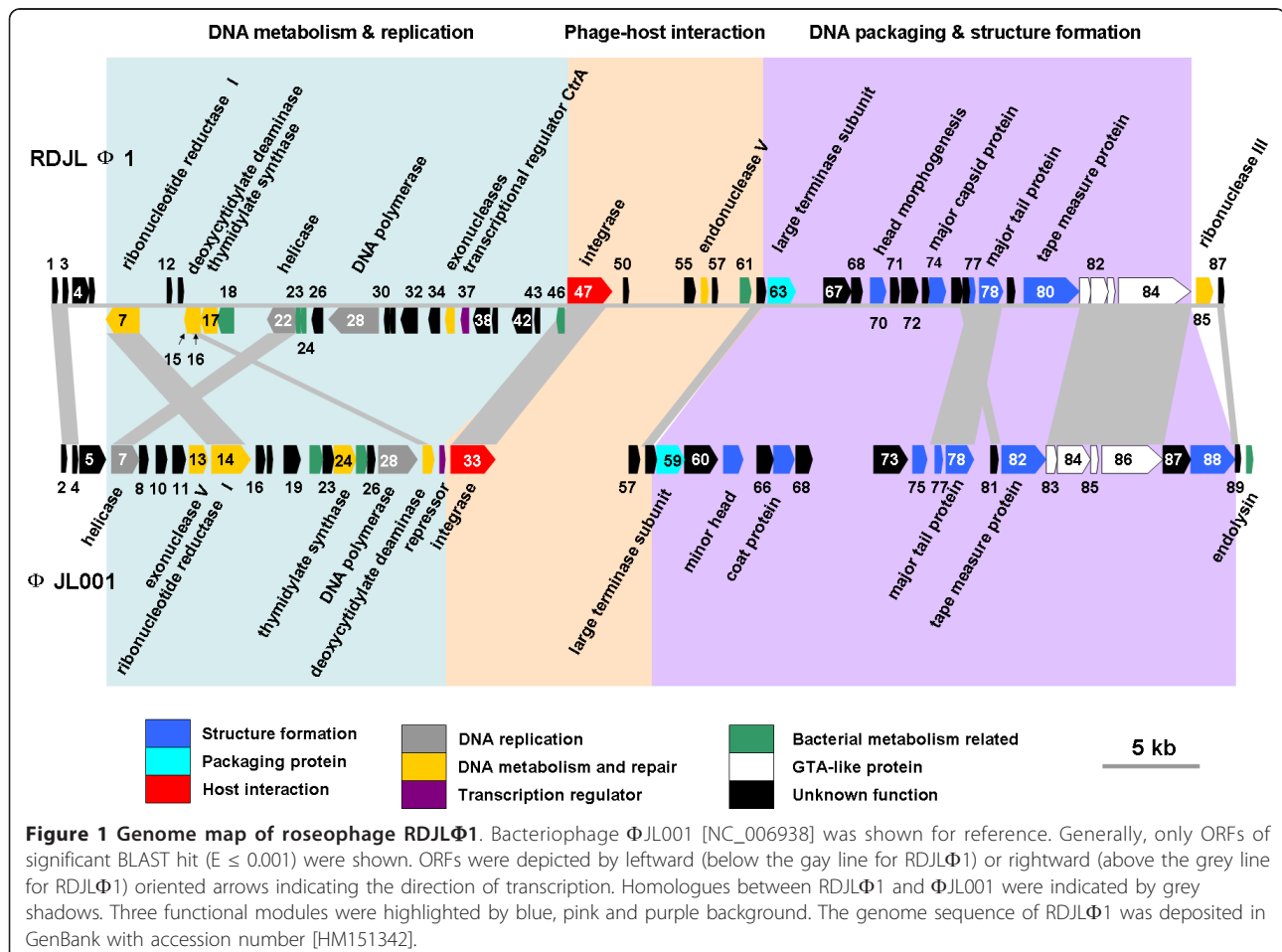
Table 1 Phage RDJL Φ 1 structural protein assignment based on the previously reported SDS-PAGE analysis [19]

SDS-PAGE band	MW (kDa)	ORF no.	Predicted product
A	147.6	84	tail fibre
B	107.9	80	tail tape measure protein
C	53	78	major tail protein
D	52.7	67	unknown structural protein
E	37.7	74	major capsid protein

SDS-PAGE: sodium dodecyl sulfate-polyacrylamide gel electrophoresis; MW: molecular weight.

and corresponding SDS-PAGE bands were predicted based on comparing their molecular weights and bands' staining intensity) [19].

The RDJL Φ 1 genome can be divided into three modules: (i) DNA metabolism and replication, (ii) phage-host interaction, (iii) DNA packaging and structure formation (Figure 1). This type of genome organization is similar to those of Φ JL001, YuA and M6, but differs from those of λ - and Mu-like phages [24]. RDJL Φ 1, Φ JL001, YuA and M6 also share the similar gene contents in the three modules. No lysis genes were

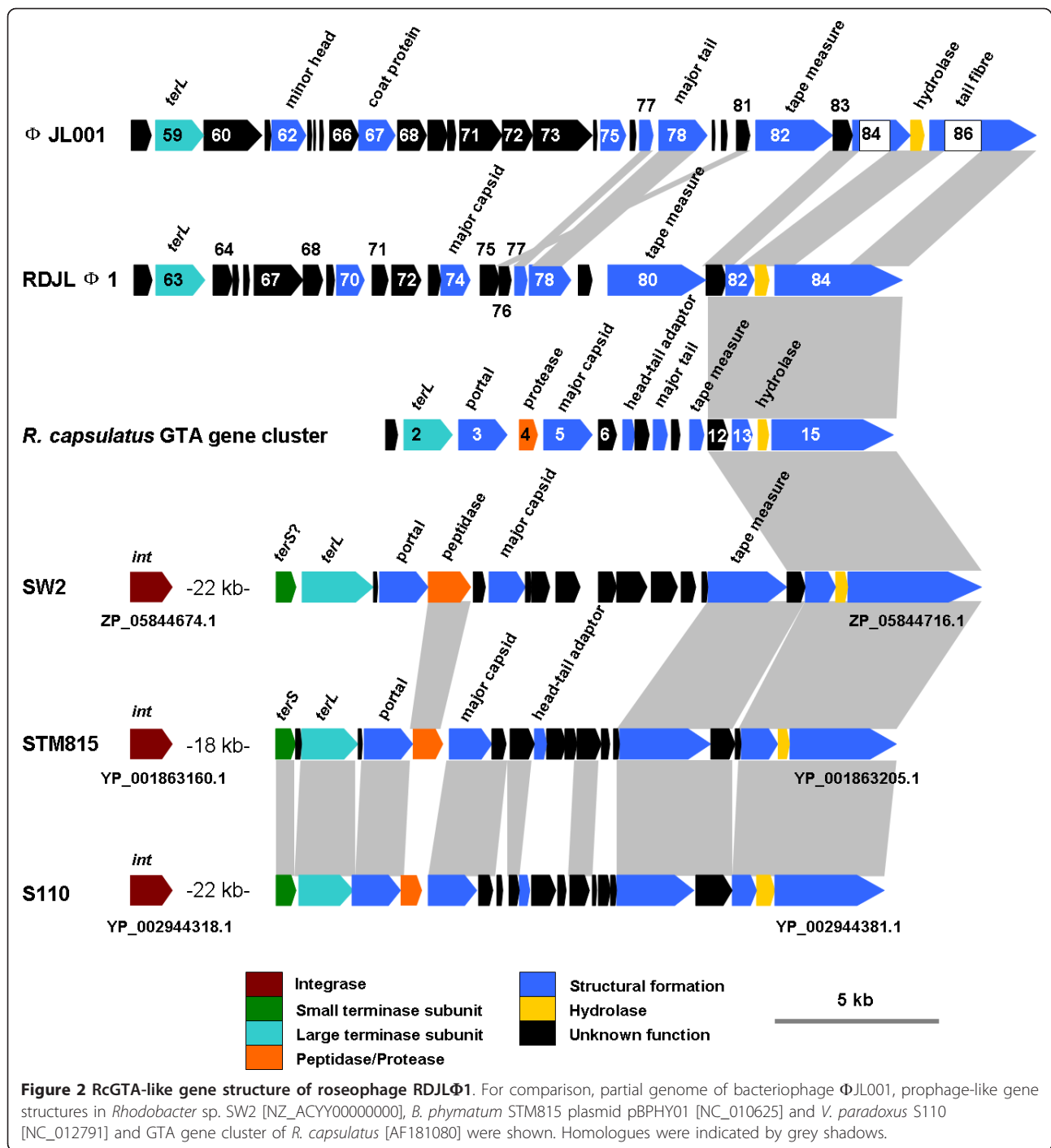


predicted in RDJLΦ1 genome, whereas lysis cassettes including four genes (endopeptidase *Rz*, embedded *Rz1*, holing and endolysin) were found in YuA and M6 genomes [24]. Phylogenetic analysis based on terminase large subunit (TerL) protein showed that RDJLΦ1 fell into the “P22-like headful” cluster and was closely related to *Salmonella* phages ES18, E1 and *Listonella* phage ΦHSIC (Additional file 2). Despite the factor that RDJLΦ1, YuA, M6 and ΦJL001 share certain genomic similarity, temperate phages YuA, M6 and ΦJL001 clustered closely together but distantly to RDJLΦ1. Phages that infect marine, even aquatic, bacteria are isolated and characterized less frequently than terrestrial phages, resulting in the difficulty in their taxonomic classifications.

Four ORFs (81, 82, 83 and 84) of RDJLΦ1 are homologous to RcGTA genes 12, 13, 14 and 15, respectively [12,15] (Additional file 1, Figure 2). gp81 is most closely related to the glycoside hydrolase which could also be the putative product of RcGTA gene 12. ORF 82 was identified as a homologue of RcGTA gene 13 which encodes a structural protein detected by proteomic approaches [26]. ORF 83 contains a phage-related cell wall peptidase domain and was predicted to encode a hydrolase belonging to the NlpC/P60 superfamily. The product of its homologue in RcGTA (gene 14) was not found in proteome [26]. Previously, it was implied that NlpC/P60 proteins from bacteriophages may help them penetrate the bacterial cell wall [27]. We propose that gp83 in RDJLΦ1 may have the same function based on sequence homology. ORF 84 is highly homologous to RcGTA gene 15, the largest gene encoding a single 138 kDa protein [26], which contains a rhamnosyl transferase homology and was suggested to mediate interaction between RcGTA particles and the capsule of recipient cells [28]. A 147.6 kDa homologous protein was also detected in our previous phage proteome analysis (Table 1). We inferred that this protein serves as a component of tail fibre, which is known to be involved in host specificity in broad types of tailed phages. Typical RcGTA-like gene cluster such as that in *R. capsulatus* is 15 kb long and encodes 15 gene products (Figure 2) [12,28]. Protein sequences of gp81 to gp84 in RDJLΦ1 are 35-49% identical to the corresponding sequences in RcGTA, which is the highest level of identity that we have found between RcGTA and phage sequences. Similar identity range (30-50%) was observed between RcGTA and RcGTA-like elements in other alphaproteobacteria [29]. These four RcGTA-like genes have been previously found in phage ΦJL001 (ORFs 83-86) [12]. It is noteworthy that ΦJL001 contains unmatched sequences inside ORF84 and 86 when aligned with their homologues (Figure 2, indicated by white boxes internal to blue arrows). This suggests that ΦJL001 could be

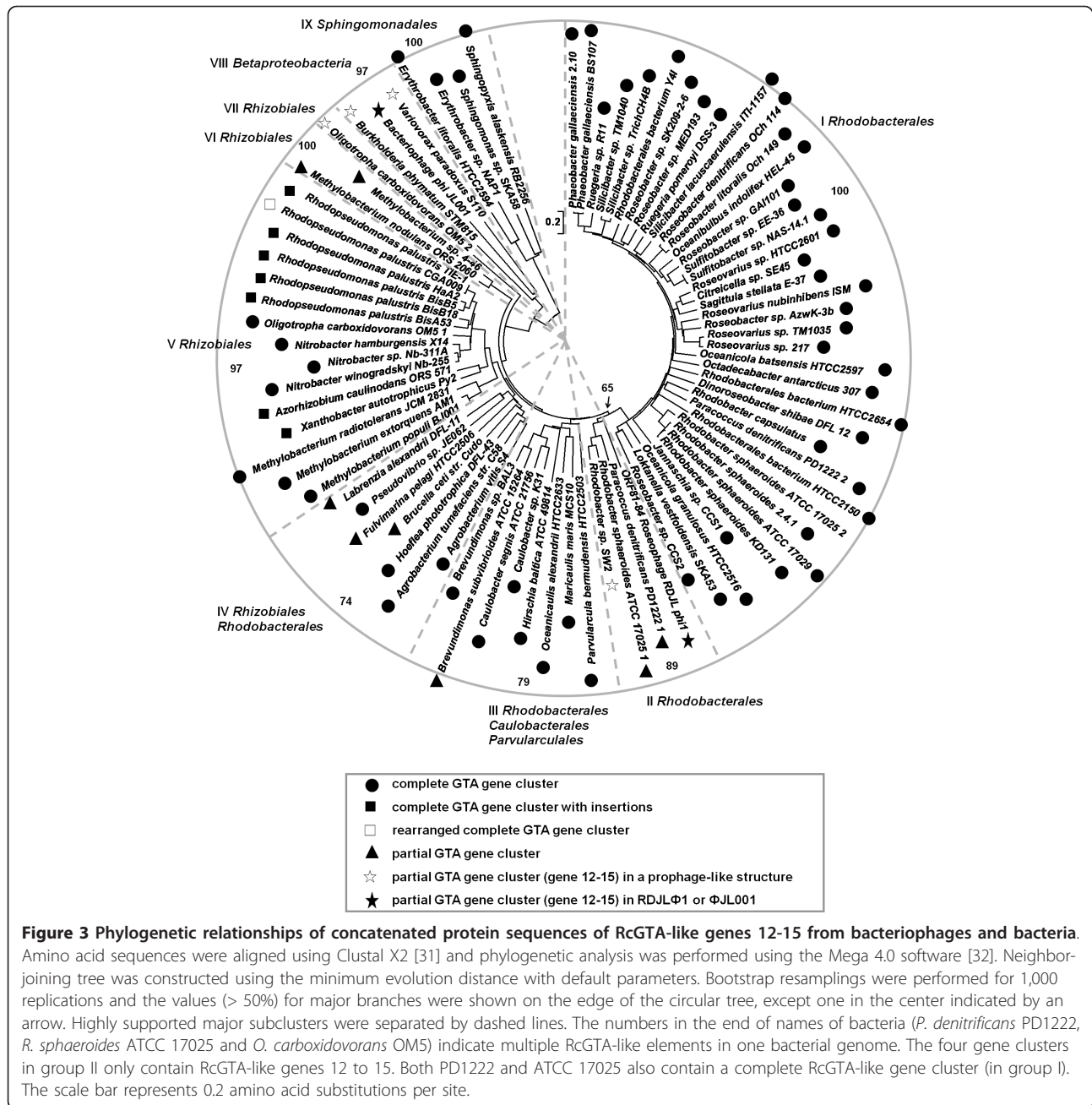
relatively distantly related to RcGTA-like elements in alphaproteobacteria.

We retrieved 80 RcGTA-like gene clusters (some are partial) from 77 bacterial genomes and carried out phylogenetic analysis based on the concatenated translated sequences of RcGTA-like genes 12 to 15. The neighboring tree shows that RDJLΦ1 are most closely related to *Paracoccus denitrificans* PD1222, *Rhodobacter sphaeroides* ATCC 17025 and *Rhodobacter* sp. SW2 (group II in Figure 3). We also examined the neighboring sequences of all these RcGTA-like structures. Interestingly, typical phage-like genes such as those encoding integrase, small and large terminase subunits, portal, major capsid, and tail tape measure proteins (TMP, coded by *tmp*) were identified to the left of the RcGTA-like genes from the bacterial genomes of *Rhodobacter* sp. SW2, *Burkholderia phyatum* STM815 (plasmid pBPHY01), *Variovorax paradoxus* S110 and *Oligotropha carboxidovorans* OM5 (*O. carboxidovorans* OM5 has two RcGTA-like structures, it refers to “OM5 2” here) (Figure 3). There are three evidences supporting the idea that these structures are not potential RcGTA-like gene clusters but functional elements of prophage genomes. First, no homology to RcGTA-like genes 1 to 11 was found in these gene structures. Second, other phage-like genes were found in the left arms, especially the integrase genes. Third, the *tmp* genes are much larger than those in RcGTA-like structures (2424~2739 bp vs. 660 bp). It was demonstrated that phage tail length has significant correspondence with its gene size of *tmp* [30]. These *tmp* genes in the aforementioned four bacterial genomes appear to code for components of long phage tails rather than tails of RcGTA-like particles. Lang and Beatty [12,29] suggested that RcGTA-like element is likely a remnant of a prophage ancestor that evolved to be a RcGTA progenitor in an alphaproteobacterium by losing replication, regulatory genes, and that this RcGTA progenitor then have processed a predominantly vertical descent. Partial RcGTA-like gene clusters in genuine phages and putative prophages provide evidence supporting this suggestion. It is interesting that STM815 and S110 are both betaproteobacteria. It is likely that RDJLΦ1, ΦJL001 and potential prophages in SW2, STM815, S110 and OM5 have been evolving from the proposed “prophage ancestor” and keeping the four conserved RcGTA-like genes, rather than acquired them from RcGTA-like gene clusters in alphaproteobacteria at a recent evolutionary time. They could be the “remnant” of the intermediate form on the way from “prophage ancestor” to RcGTA progenitor. Intriguingly, even a partial RcGTA-like structure and a complete one from the same bacterial genome (*e.g.* PD1222, ATCC 17025 and OM5) could diverge distantly and evolve independently (Figure 3).



The RCGTA-like gene cluster appears to consist of two modular components: (i) head-to-tail module (gene 1 to 11); (ii) tail fibre and host recognition module (gene 12 to 15). It is interesting that up to date RCGTA-like genes in a (pro)phage have been found either from region (i) or region (ii), but not from both. Likely, the juncture between regions (i) and (ii) is a hotspot for genetic recombination.

The last four RCGTA-like genes seem to be a conserved element as a unit. The vertical descent inside the RCGTA-like gene clusters appears to be unbalanced that losing or keeping some element could be under certain selective pressure. However, the reason why some (pro)phages tend to retain gene module (ii) that is associated with the putative host recognition function is not clear.



Additional material

Additional file 1: Genes predicted from Roseophage RDJLΦ1 genome.

Additional file 2: Phylogenetic analysis based on the terminase large subunit (TerL) proteins from bacteria and bacteriophages.

Acknowledgements

We thank Rui Zhang for providing discussion and suggestions in this work. This work was supported by the research programs of MOST (2007CB815904), NSFC (40632013, 40841023) and SOA (200805068) to NJ

and Xiamen University 111 Program to FC. YZ was supported by MEL Visiting Fellowship Program (MELRS0931) and NSFC project (41006087).

Author details

¹State Key Laboratory of Marine Environmental Science, Xiamen University, Xiamen 361005, PR China. ²Institute of Marine and Environmental Technology, University of Maryland Center for Environmental Science, Baltimore, MD 21202, USA. ³Key Laboratory of Urban Environment and Health, Institute of Urban Environment, Chinese Academy of Sciences, Xiamen 361012, PR China.

Authors' contributions

YZ isolated the phage, extracted the viral DNA and sequenced the genome. SH annotated the genome and carried out the phylogenetic and comparative genomic analyses. SH drafted the manuscript, and YZ, FC, NJ

edited it. NJ and FC organized the study. All authors read and approved the final manuscript.

Competing interests

The authors declare that they have no competing interests.

Received: 9 August 2010 Accepted: 17 March 2011

Published: 17 March 2011

References

1. Suttle CA: Viruses in the sea. *Nature* 2005, **437**:356-361.
2. Thingstad TF, Lignell R: Theoretical models for the control of bacterial growth rate, abundance, diversity and carbon demand. *Aquat Microb Ecol* 1997, **13**:19-27.
3. Thingstad TF: Elements of a theory for the mechanism controlling abundance, diversity, and biogeochemical role of lytic bacterial viruses in aquatic systems. *Limnol Oceanogr* 2000, **45**:1320-1328.
4. Weinbauer MG: Ecology of prokaryotic viruses. *FEMS Microbiol Rev* 2004, **28**:127-181.
5. Hendrix RW, Smith MC, Burns RN, Ford ME, Hatfull GF: Evolutionary relationships among diverse bacteriophages and prophages: all the world's a phage. In *Proc Natl Acad Sci. Volume 96. USA*; 1999:2192-2197.
6. Jiang SC, Paul JH: Seasonal and diel abundance of viruses and occurrence of lysogeny/bacteriocinogeny in the marine environment. *Mar Ecol Prog Ser* 1994, **104**:163-172.
7. Weinbauer MG, Suttle CA: Potential significance of lysogeny to bacteriophage production and bacterial mortality in coastal waters of the Gulf of Mexico. *Appl Environ Microbiol* 1996, **62**:4374-4380.
8. Gonzalez JM, Moran MA: Numerical dominance of a group of marine bacteria in the α -subclass of the class *Proteobacteria* in coastal seawater. *Appl Environ Microbiol* 1997, **63**:4237-4242.
9. DeLong EF: Microbial community genomics in the ocean. *Nat Rev Microbiol* 2005, **3**:459-469.
10. Newton RJ, Griffin LE, Bowles KM, Meile C, Gifford S, Givens CE, Howard EC, King E, Oakley CA, Reisch CR, Rinta-Kanto JM, Sharma S, Sun S, Varaljay V, Vila-Costa M, Westrich JR, Moran MA: Genome characteristics of a generalist marine bacterial lineage. *ISME J* 2010, **4**:784-798.
11. Chen F, Wang K, Stewart J, Belas R: Induction of multiple prophages from a marine bacterium: a genomic approach. *Appl Environ Microbiol* 2006, **72**:4995-5001.
12. Lang AS, Beatty JT: Importance of widespread gene transfer agent genes in alpha-proteobacteria. *Trends Microbiol* 2007, **15**:54-62.
13. Paul JH: Prophages in marine bacteria: dangerous molecular time bombs or the key to survival in the seas? *ISME J* 2008, **2**:579-589.
14. Zhao YL, Wang K, Ackermann H, Halden RU, Jiao NZ, Chen F: Searching for a "hidden" prophage in a marine bacterium. *Appl Environ Microbiol* 2010, **76**:589-595.
15. Marrs B: Genetic recombination in *Rhodospseudomonas capsulata*. *Proc Natl Acad Sci USA* 1974, **71**:971-973.
16. Rohwer F, Segall A, Steward G, Seguritan V, Breitbart M, Wolven F, Azam F: The complete genomic sequence of the marine phage Roseophage SIO1 shares homology with nonmarine phages. *Limnol Oceanogr* 2000, **45**:408-418.
17. Angly F, Youle M, Nosrat B, Srinagesh S, Rodriguez-Brito B, McNairnie P, Deyanat-Yazdi G, Breitbart M, Rohwer F: Genomic analysis of multiple Roseophage SIO1 strains. *Environ Microbiol* 2009, **11**:2863-2873.
18. Zhao YL, Wang K, Jiao NZ, Chen F: Genome sequences of two novel phages infecting marine roseobacters. *Environ Microbiol* 2009, **11**:2055-2064.
19. Zhang YY, Jiao NZ: Roseophage RDJL01, Infecting the Aerobic Anoxygenic Phototrophic Bacterium *Roseobacter denitrificans* OCh114. *Appl Environ Microbiol* 2009, **75**:1745-1749.
20. Delcher AL, Harmon D, Kasif S, White O, Salzberg SL: Improved microbial gene identification with GLIMMER. *Nucleic Acids Res* 1999, **27**:4636-4641.
21. Lukashin A, Borodovsky M: GeneMark.hmm: new solutions for gene finding. *Nucleic Acids Res* 1998, **26**:1107-1115.
22. Lowe TM, Eddy SR: tRNAscan-SE: a program for improved detection of transfer RNA genes in genomic sequence. *Nucleic Acids Res* 1997, **25**:955-964.
23. Lohr JE, Chen F, Hill RT: Genomic analysis of bacteriophage Φ JL001: insights into its interaction with a sponge-associated alpha-proteobacterium. *Appl Environ Microbiol* 2005, **71**:1598-1609.
24. Ceyssens PJ, Mesyanzhinov V, Sykilinda N, Briers Y, Roucourt B, Lavigne R, Robben J, Domashin A, Miroshnikov K, Volckaert G, Hertveldt K: The genome and structural proteome of YuA, a new *Pseudomonas aeruginosa* phage resembling M6. *J Bacteriol* 2008, **190**:1429-1435.
25. Kwan T, Liu J, DuBow M, Gros P, Pelletier J: Comparative genomic analysis of 18 *Pseudomonas aeruginosa* bacteriophages. *J Bacteriol* 2006, **188**:1184-1187.
26. Chen F, Spano A, Goodman BE, Blasier KR, Sabat A, Jeffery E, Norris A, Shabanowitz J, Hunt DF, Lebedev N: Proteomic analysis and identification of the structural and regulatory proteins of the *Rhodobacter capsulatus* gene transfer agent. *J Proteome Res* 2009, **8**:967-973.
27. Anantharaman V, Aravind L: Evolutionary history, structural features and biochemical diversity of the NlpC/P60 superfamily of enzymes. *Genome Biol* 2003, **4**:R11.
28. Lang AS, Beatty JT: Genetic analysis of a bacterial genetic exchange element: the gene transfer agent of *Rhodobacter capsulatus*. *Proc Natl Acad Sci USA* 2000, **97**:859-864.
29. Lang AS, Beatty JT: Evolutionary implications of phylogenetic analyses of the gene transfer agent (GTA) of *Rhodobacter capsulatus*. *J Mol Evol* 2002, **55**:534-543.
30. Pedulla ML, Ford ME, Houtz JM, Karthikeyan T, Wadsworth C, Lewis JA, Jacobs-Sera D, Falbo J, Gross J, Pannunzio NR, Brucker W, Kumar V, Kandasamy J, Keenan L, Bardarov S, Kriakov J, Lawrence JG, Jacobs WR, Hendrix RW, Hatfull GF: Origins of highly mosaic mycobacteriophage genomes. *Cell* 2003, **113**:171-182.
31. Larkin MA, Blackshields G, Brown NP, Chenna R, McGettigan PA, McWilliam H, Valentin F, Wallace IM, Wilm A, Lopez R, Thompson JD, Gibson TJ, Higgins DG: ClustalW2 and ClustalX version 2. *Bioinformatics* 2007, **23**:2947-2948.
32. Tamura K, Dudley J, Nei M, Kumar S: MEGA4: Molecular evolutionary genetics analysis MEGA software version 4.0. *Mol Biol Evol* 2007, **24**:1596-1599.

doi:10.1186/1743-422X-8-124

Cite this article as: Huang et al.: Complete genome sequence of a marine roseophage provides evidence into the evolution of gene transfer agents in alphaproteobacteria. *Virology Journal* 2011 **8**:124.

Submit your next manuscript to BioMed Central and take full advantage of:

- Convenient online submission
- Thorough peer review
- No space constraints or color figure charges
- Immediate publication on acceptance
- Inclusion in PubMed, CAS, Scopus and Google Scholar
- Research which is freely available for redistribution

Submit your manuscript at
www.biomedcentral.com/submit

