

RESEARCH ARTICLE

Open Access

# Phylogenetic relationships in genus *Arachis* based on ITS and 5.8S rDNA sequences

Marcelo D Bechara<sup>1</sup>, Márcio C Moretzsohn<sup>2</sup>, Darío A Palmieri<sup>3</sup>, Jomar P Monteiro<sup>4</sup>, Maurício Bacci Jr<sup>5</sup>, Joaquim Martins Jr<sup>6</sup>, José FM Valls<sup>2</sup>, Catalina R Lopes<sup>4</sup>, Marcos A Gimenes<sup>2\*</sup>

## Abstract

**Background:** The genus *Arachis* comprises 80 species and it is subdivided into nine taxonomic sections (*Arachis*, *Caulorrhizae*, *Erectoides*, *Extranervosae*, *Heteranthae*, *Procumbentes*, *Rhizomatosae*, *Triectoides*, and *Triseminatae*). This genus is naturally confined to South America and most of its species are native to Brazil. In order to provide a better understanding of the evolution of the genus, we reconstructed the phylogeny of 45 species using the variation observed on nucleotide sequences in internal transcribed spacer regions (ITS1 and ITS2) and 5.8 S of nuclear ribosomal DNA.

**Results:** Intraspecific variation was detected, but in general it was not enough to place accessions of the same species in different clades. Our data support the view that *Arachis* is a monophyletic group and suggested *Heteranthae* as the most primitive section of genus *Arachis*. The results confirmed the circumscriptions of some sections (*Caulorrhizae*, *Extranervosae*), but raised questions about others. Sections *Erectoides*, *Triectoides* and *Procumbentes* were not well defined, while sections *Arachis* and *Rhizomatosae* seem to include species that could be moved to different sections. The division of section *Arachis* into A and B genome species was also observed in the phylogenetic tree and these two groups of species may not have a monophyletic origin. The  $2n = 2x = 18$  species of section *Arachis* (*A. praecox*, *A. palustris* and *A. decora*) were all placed in the same clade, indicating they are closely related to each other, and their genomes are more related to B genome than to the A genome. Data also allowed insights on the origin of tetraploid *A. glabrata*, suggesting rhizome appeared twice within the genus and raising questions about the placement of that species in section *Rhizomatosae*.

**Conclusion:** The main clades established in this study in general agreed with many other studies that have used other types of evidences and sets of species, being some of them included in our study and some not. Thus, the relationships established can be a useful framework for future systematic reviews of genus *Arachis* and for the selection of species to pre-breeding programs.

## Background

The genus *Arachis* originated in South America, where all the cultivated and wild species are found, and includes 80 described species [1,2]. Groundnut, the allo-tetraploid species *A. hypogaea* (genome formula AABB), is the most important species of the genus because it is cultivated as an oilseed crop and as a direct source of human food. The genus also includes species such as *A. glabrata* (section *Rhizomatosae*) and *A. pintoii* (section

*Caulorrhizae*), which are frequently used in cultivated pastures.

Many studies have focused on the taxonomy of genus *Arachis* (Table 1). The first published classification divided the genus into six sections, some of which were sub-divided in series [3]. A taxonomic revision of this genus resulted in the inclusion of section *Triseminatae* [4]. Krapovickas [5] divided the genus into eight sections and classified one of the series of section *Erectoides*, established by Gregory *et al.* [4], as a new section called *Procumbensae*. The genus is currently divided into nine sections (*Arachis*, *Caulorrhizae*, *Erectoides*, *Extranervosae*, *Heteranthae*, *Procumbentes*, *Rhizomatosae*, *Triectoides*, and *Triseminatae*) based on morphology,

\* Correspondence: gimenes@cenargen.embrapa.br

<sup>2</sup>Embrapa Recursos Genéticos e Biotecnologia, C.P. 02372, 70770-917, Brasília, DF, Brazil

Full list of author information is available at the end of the article

**Table 1 Classifications of genus *Arachis*\***

| Krapovickas (1969) | Krapovickas (1975) | Gregory et al. (1973, 1980) | Krapovickas (1990) | Krapovickas and Gregory (1994) | Number of described species | Number of species analyzed | Genomes       |
|--------------------|--------------------|-----------------------------|--------------------|--------------------------------|-----------------------------|----------------------------|---------------|
| AXONOMORPHAE       | ARACHIS            | AXONOMORPHAE                | ARACHIS            | ARACHIS                        | 31                          | 25                         | A,B,D,F,K, AB |
|                    |                    | Annuae                      | Annuae             |                                |                             |                            |               |
|                    |                    | Perennes                    | Perennes           |                                |                             |                            |               |
|                    |                    | Amphiploides                | Amphiploides       |                                |                             |                            |               |
| ERECTOIDES         | TRIERECTOIDES      | ERECTOIDES                  | ERECTOIDES         | ERECTOIDES                     | 14                          | 4                          | E             |
|                    |                    | Trifoliolatae               | Tetrafoliolate     |                                |                             |                            |               |
|                    | TETRAERECTOIDES    | Tetrafoliolate              | Trifoliolatae      | TRIERECTOIDES                  | 2                           | 2                          | E             |
|                    |                    | Procumbensae                | PROCUMBENSAE       | PROCUMBENTES                   | 10                          | 5                          | E             |
| CAULORRHIZAE       | CAULORRHIZAE       | CAULORRHIZAE                | CAULORRHIZAE       | CAULORRHIZAE                   | 2                           | 2                          | C             |
| RHIZOMATOSAE       | RHIZOMATOSAE       | RHIZOMATOSAE                | RHIZOMATOSAE       | RHIZOMATOSAE                   | 2                           | 2                          | R             |
|                    |                    | Prorhizomatosae             | Prorhizomatosae    | Prorhizomatosae                |                             |                            |               |
|                    |                    | Eurhizomatosae              | Eurhizomatosae     | Eurhizomatosae                 |                             |                            |               |
| EXTRANERVOSAE      | EXTRANERVOSAE      | EXTRANERVOSAE               | EXTRANERVOSAE      | EXTRANERVOSAE                  | 10                          | 3                          | Ex            |
| AMBINERVOSAE       | AMBINERVOSAE       | PSEUDAXONOMORPHAE           | AMBINERVOSAE       | HETERANTHAE                    | 6                           | 1                          | Am            |
|                    |                    | TRISEMINALAE                | TRISEMINALAE       | TRISEMINATAE                   | 1                           | 1                          | T             |

\*Modified from Valls and Simpson [69].

geographical distribution and crossability [1]. In this last revision, two species with trifoliolate leaves from section *Erectoides* were transferred to a new section called *Trirectoides*.

The systematic relationships among *Arachis* species have been inferred using different molecular markers, such as RAPDs [6], storage proteins [7,8], isozymes [9,10], variation on sequence of desaturase genes [11], RFLP [12], microsatellites [13-16], AFLPs [17], cytogenetic and molecular data from AFLP and the *trnT-F* plastid region [18], FISH and GISH [19-21]. However, most of these studies included only species belonging to section *Arachis*. Just recently one study that included species from all sections was published [22].

Understanding the phylogenetic relationships among *Arachis* species would contribute to the systematics of the genus, comprehension of the origins and evolution of species and sections and the use of species of genus *Arachis*. For instance, the circumscriptions of some sections are based in criterions that may not reflect phylogenetic relationships. The maintenance of species associated respectively to the A and the B genomes of the cultivated peanut in a single section does not seem to be natural and it may be an artificial construction derived from the existence of the peanut, a fixed amphidiploid gathering genetic material from species that when crossed to each other produce unfertile hybrids at the diploid level. Also, section *Rhizomatosae*, a very important group from the standpoint of forage production, comprises polyploid species (*A. glabrata*, *A. pseudovillosa*, *A. nitida*) and one diploid (*A. burkartii*) that RAPD [23] and microsatellite data [24] showed to be

very distinct from the other species in this section. As mentioned before, phylogenetic information will also have great impact in the utilization of the species, mainly those from sections that comprise cultivated species. For instance, for many years *A. batizocoi* was considered the donor of the B genome of *A. hypogaea* and that species was used with moderated success in pre-breeding programs. However, molecular and cytogenetic evidences showed that *A. ipaënsis* was the most probable donor of B genome of *A. hypogaea* and *A. duranensis* the donor of the A genome [25]. That information was corroborated based on molecular cytogenetics [19] and crossability [26]. The number of accessions of *A. duranensis* is very large [1] comprising large variability that could be used to improve *A. hypogaea* through introgression into its A genome. Besides, the relationships between A genome species are well defined and they show very good crossability to each other [1]. On the other hand, there is an unique accession of *A. ipaënsis* available and the relationships among species of section *Arachis* that do not have the A genome is not well defined. The non A genome species group is very diverse comprising species with different degrees of affinity to the B genome of *A. hypogaea* [18,27]. Phylogeny and genomic data also allow a better understanding of the evolution in section *Arachis*. For instance, recently the first comparative genomic study between the genomes of *A. hypogaea* using microsatellite markers and two map populations resulting from crosses between two A genome species and two B genome species was published [28]. The comparison between the B genome and A genome maps revealed a high degree of synteny.

The development of genetic maps for *Arachis* diploid wild species with A and B genomes associated to phylogenetic studies effectively is a significant advance towards the construction of a transferable reference map for *Arachis*.

The DNA sequence variation observed in the internal transcribed spacers (ITS1 and ITS2) of nuclear rDNA, located between the 18 S and 26 S rDNA coding regions, has been largely used for phylogenetic analysis at plant genus and species discrimination levels [29-34]. The sequences are relatively easy to align because few length variations have been observed at the genus level in flowering plants, they are long enough to offer a sufficient number of potential characters for phylogenetic reconstruction, and are flanked by regions that are highly conserved within genera, thus simplifying the isolation and sequencing of the region through the use of universal primers [35].

The objective of this work was to establish the phylogenetic relationships among species of the genus *Arachis*. The polymorphism in sequences of internal transcribed spacers ITS1 and ITS2 and 5.8 S rDNA coding region was used to determine relationships among 45 species of genus *Arachis*.

## Results and Discussion

We have analyzed 55 accessions encompassing 45 *Arachis* species and the nine taxonomical sections. Consensus sequences were obtained for each accession using four to ten reads. The number of reads per accession varied because their quality also varied. For some species only four reads were necessary to get a good quality consensus sequence and for some ten reads were necessary.

In spite of the large number of studies using ITS to infer phylogeny in a very large number of genus and families, some authors have criticized the use of these genomic regions. ITS data may cause incongruence due to the various mechanisms that can influence ITS variation [33]. Among the most prevalent complications for phylogenetic inference is the existence in many plant genomes of extensive sequence variation, arising from ancient or recent array duplication events, genomic harboring of pseudogenes in various states of decay, and/or incomplete intra- or interarray homogenization [32]. Despite that, we have used ITS region to infer phylogeny in genus *Arachis* and, to have insights in how much the variation in this region may have interfered in the species relationship establishment, we included more than one individual from six species (*A. pintoi*: two accessions; *A. major*: two accessions; *A. paraguariensis*: two accessions; *A. magna*: two accessions, *A. kuhlmannii*: four accessions, *A. hoehnei*: three accessions). We also included species that are very related to

each other based on different types of evidences, such as *A. hypogaea* and *A. monticola* [12,16,36] and *A. repens* and *A. pintoi* [37,38] and included groups of species whose high affinity was demonstrated by many different methods, such as the A genome species [21].

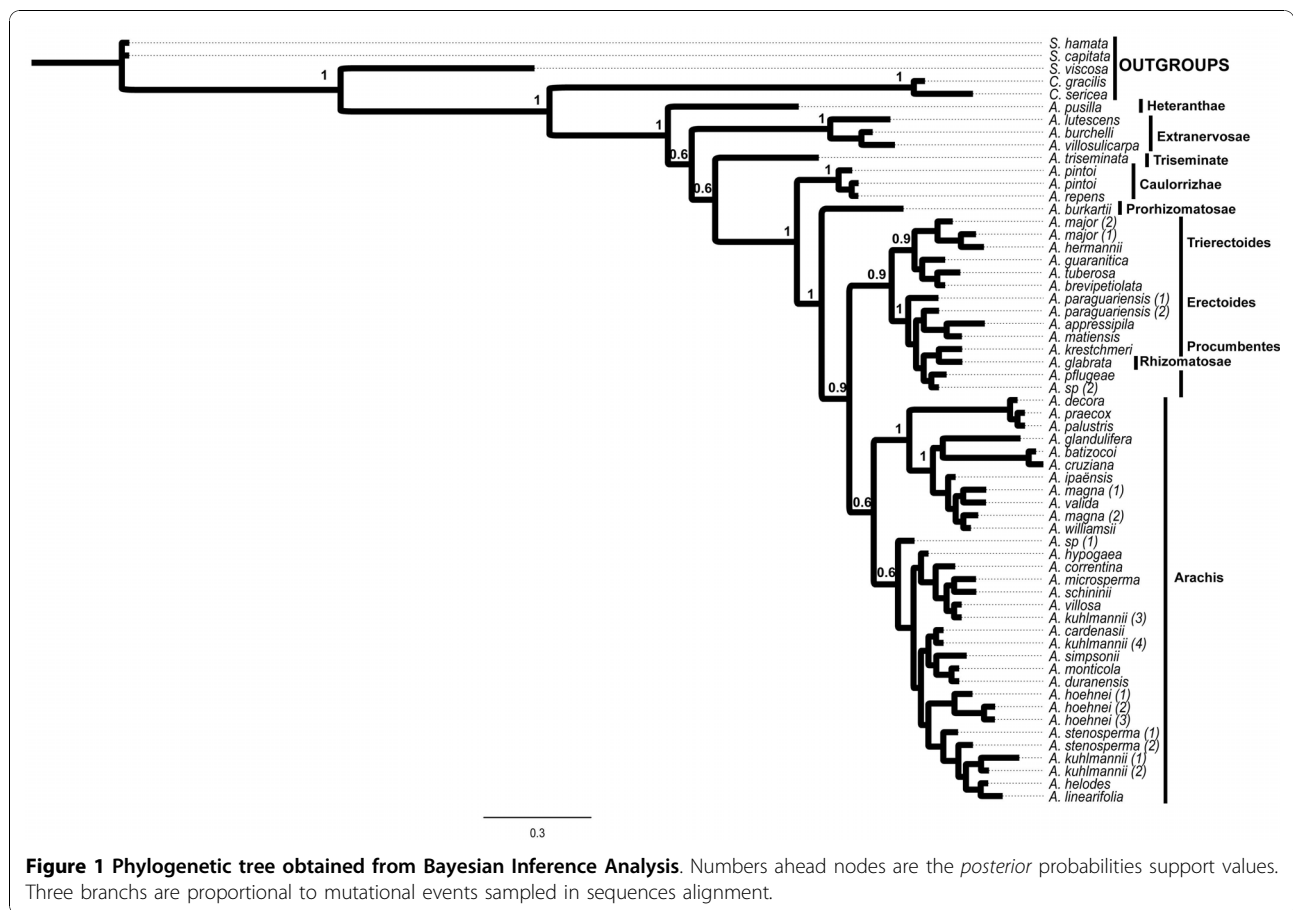
As it can be seen in Figure 1, there was variation between accessions of the same species which may have been caused by the ITS variation cited above. The variation found for three species (*A. pintoi*, *A. major*, *A. hoehnei*) was not enough to place their accessions away from each other. *Arachis magna* accessions were not placed together but they were in the same clade. *Arachis paraguariensis* and *A. kuhlmannii* accessions were, in general, placed away from each other.

The two accessions of *A. paraguariensis* analyzed belong to different subspecies (*A. paraguariensis* subsp. *paraguariensis* and *A. paraguariensis* subsp. *capibarenensis*). The differentiation between these two subspecies based on morphology is very difficult but they are considered as different subspecific taxa based on their distinct geographic distribution [1] and SAT chromosome morphology [39].

Four accessions of *A. kuhlmannii* were analyzed (VPoBi 9375 - *A. kuhlmannii* 1; VSGr 6404 - *A. kuhlmannii* - 2; VPzRcSgSv 13530 - *A. kuhlmannii* 3; VSPmSv 13721 - *A. kuhlmannii* 4). All of them were placed in the A genome clade, but into three different subclades. *Arachis kuhlmannii* 1 and 2 were placed close to each other in a clade that also included *A. helodes* and *A. linearifolia*. *Arachis kuhlmannii* 3 was placed in a subclade with *A. hypogaea*, *A. correntina*, *A. microsperma*, *A. schininii* and *A. villosa*, while *A. kuhlmannii* 4 in a clade with *A. cardenasii*, *A. simpsonii*, *A. monticola* and *A. duranensis*. Accessions of *A. kuhlmannii* were also placed in different subclusters based on microsatellite and AFLP data [16,17]. In a dendrogram obtained using RAPD data, *A. kuhlmannii* 1, 2 and 4 grouped together and *A. kuhlmannii* 3 was placed in a different group that comprised accessions from Mato Grosso do Sul State in Brazil [40]. *Arachis kuhlmannii* 4 was collected in Brazil near the frontier with Bolivia, and probably is more distinct from the other *A. kuhlmannii* accessions and more related to *A. cardenasii*. In the RAPD dendrogram, *A. kuhlmannii* 4 grouped to *A. simpsonii* accession VSPmSv 13728, which was collected in Bolivia, in the same population where the species *typus* was collected.

Thus, the placement of *A. paraguariensis* and *A. kuhlmannii* accessions may have been due to factors not related exclusively to the variation found in ITS regions since our data corroborates previous studies demonstrating high variability within these species.

The closely related allopolyploid species *A. hypogaea* and *A. monticola* were placed in different clades. It is



known that *A. monticola* is the closest related species to *A. hypogaea* [1]. Despite that, *A. monticola* was considered as a distinct species from *A. hypogaea* [1]. However, some doubts about its classification still remain, because this species has a high crossability with *A. hypogaea* [1,41]. It is also an allotetraploid and both species have identical genomes [19,36,39]. Furthermore part of their geographic distribution overlaps [1]. Molecular marker data also confirmed the very close genetic relationship between these two species [6,11,13,15,17,42,43]. In our case, despite the causes of variation in ITS regions, the observed placement of *A. hypogaea* and *A. monticola* was certainly influenced by the fact that these species have ITS regions from A and B genomes which our results showed to be different and seem to be specific for each genome type found in genus *Arachis*. The sequences of *A. hypogaea* and *A. monticola* included in this study represent one of the genomes and may even be a mixture of the sequences from both. As mentioned above the close relationships between these two species have been demonstrated using different evidences. Thus, our data is limited to infer phylogenetic relationships between the allopolyploids as well as their relationships to the wild diploid species.

Section *Heterantheae* showed a basal position, followed by *Extranervosae*, *Triseminatae*, *Caulorrhizae*, and *Rhizomatosae* Ser. *Prorhizomatosae*, *Procumbentes/Triectoides/Erectoides/Rhizomatosae* and *Arachis*. Despite the lack of dating analysis, the position of clades in relation to the outgroups agreed with DNA content analysis showing that species with greater DNA content were included in sections believed to have a more recent origin (*Procumbentes*, *Caulorrhizae*, *Rhizomatosae* and *Arachis*), whereas those with lower DNA content in the most primitive or ancient sections (*Extranervosae*, *Heterantheae* and *Triseminatae*) [44]. Sections *Extranervosae*, *Heterantheae* and *Triseminatae* are believed to be among the oldest sections in genus *Arachis* based on their affinity with genus *Stylosanthes* [1].

#### Section circumscriptions

The results confirmed the circumscriptions of sections *Caulorrhizae* and *Extranervosae* and suggested some sections may not be natural groups. The circumscriptions of sections *Erectoides*, *Triectoides* and *Procumbentes* were not well defined, suggesting that these three sections could be grouped in one or two sections. On the other hand, our data suggested sections *Arachis* and

*Rhizomatosae* could be divided into two new sections each.

Sections *Trierectoides*, *Erectoides* and *Procumbentes* seem to be a monophyletic group. Species from these sections were distributed in two sub-clades. One of them comprised three species of section *Erectoides* (*A. major*, *A. hermannii* and *A. brevipedunculata*) and two species of section *Trierectoides* (*A. guaranitica* and *A. tuberosa*). *Arachis brevipedunculata* was more related to *Trierectoides* than to the other two species of *Erectoides*. The other sub-clade comprised one species of section *Erectoides* (*A. paraguayensis*), four species of section *Procumbentes* (*A. appressipila*, *A. kretschmeri*, *A. matiensis*, *A. pflugeae*, and *A. sp. 2*) and one species of section *Rhizomatosae* (*A. glabrata*). As can be seen in Table 1, species from sections *Trierectoides*, *Erectoides* and *Procumbentes* were all put together in the same section for many years and after three taxonomic revisions of genus *Arachis*. Only in 1990, some species were put in a new section called *Procumbensae* that is the actual *Procumbentes* section. Our data supported the first classification [3].

Section *Arachis* comprises species of three types of genomes (A, B and D). The crossability and inter-specific hybrid fertility between A genome species and between some B genome species are very high [12,18]. However, crosses between A and B genome species result in infertile hybrids [1]. The cultivated peanut is fertile just because it had its chromosomes duplicated, having a diploid-like meiosis, with no pairing of chromosomes from different genomes. Thus, based on the use of crossability for the establishment of the taxonomic sections it may be considered that, if the peanut have not evolved, most *Arachis* specialists would certainly assign the A genome and B genome species to distinct sections.

The presence of rhizomes is the main reason for a species to be in section *Rhizomatosae*, which comprises three polyploidy species (*A. glabrata*, *A. pseudovillosa*, *A. nitida*) and one diploid (*A. burkartii*). RAPD [23] and microsatellite data [24] showed that the diploid species is very distinct from the other species of this section. The different ploidy levels and variation in the ITS could result in the misplacement of *A. glabrata* or *A. burkartii*. However, we observed in section *Arachis*, which also includes diploid and polyploidy species that ITS variation may result in some unexpected placement of species, but that is not enough for their placement in clades of different sections.

Sections *Triseminatae* and *Heteranthae* had just one species analyzed but they were placed in the tree in individual branches suggesting these sections are also natural groups. *Arachis burkartii* had a placement very similar to those species from sections *Triseminatae* and

*Heteranthae*. Thus, based on ours and previous data [23,24] the establishment of a new section for *A. burkartii* should be considered.

### Section *Arachis*

The two genomes presented in domesticated peanut differ by one striking feature: one of the genomes (A) has a pair of chromosomes, called A, which is conspicuously smaller than the other chromosomes, while the other genome lacks this small chromosome [25]. The species of section *Arachis* are therefore classified as having A or B genomes based on the presence or absence of the A pair. A third genome was identified in the genus, the D genome, which is only found in *A. glandulifera* [45].

The species of section *Arachis* were placed in two clades. The first one was divided into sub-clades. The first sub-clade comprised *A. hoehnei* (1,2,3), *A. stenoperma* (1,2), *A. kuhlmannii* (1,2), *A. helodes* and *A. linearifolia*; the second *A. cardenasii*, *A. kuhlmannii* (4), *A. simpsonii*, *A. monticola* and *A. duranensis* and the third comprised *A. hypogaea*, *A. correntina*, *A. microsperma*, *A. schininii*, *A. villosa* and *A. kuhlmannii* (3). *Arachis* sp (1) was very related to the A genome species but it was not included in any of the above clades. The second clade of section *Arachis* species was divided into two sub-clades. The first included  $2n = 2x = 20$  species and the other, species with  $2n = 2x = 18$  (*A. decora*, *A. praecox* and *A. palustris*). The species with  $2n = 20$  were separated into two sister subclades, one of them being formed only by B genome species (*A. magna*, *A. valida*, *A. ipaënsis* and *A. williamsii*) and the other included *A. batizocoi* (B genome), *A. cruziana* (B genome) and *A. glandulifera* (D genome). *Arachis batizocoi* and *A. cruziana* were very recently described as having a K genome based on FISH mapping of rDNA loci and heterochromatin detection [21].

The first clade of section *Arachis* included all the A genome species and *A. hoehnei*. It was believed that *A. hoehnei* did not present the small "A" chromosome pair [39]. *Arachis hoehnei* also grouped to A genome species based on the polymorphism of *trnT-F* region [18] and RAPD markers [27], but grouped to other B genome species based on microsatellite markers [13], and to the aneuploid ( $2n = 18$ ) species with AFLP markers [18]. In our study, three different accessions of this species were included in the analysis and all of them were placed close to the A genome species, confirming that this species was correctly placed on the phylogenetic tree. The cytogenetical analysis of *A. hoehnei* was recently re-done and it was verified that this species has the A chromosome pair [21]. Thus, our data suggested A genome species are monophyletic.

The second clade comprised all species of section *Arachis* that do not have the A chromosome pair. This

clade included the  $2n = 20$  species that are classified as B genome species and the ones that possess  $2n = 18$  chromosomes (*A. decora*, *A. palustris*, and *A. praecox*). The  $2n = 2x = 18$  species lack the small pair of chromosomes characteristic of the A genome species [46]. Lavia [47] suggested that *A. palustris* was derived from a species with  $x = 10$  chromosomes and these species are phylogenetically related to the B genomes. Analyses based on AFLP [18] and microsatellite [48] data placed those  $2n = 2x = 18$  species closely to A genome species. However, microsatellite markers [13] and sequencing of the *trnT-F* region [18] and also our data showed those species are more closely related to B genome species. Thus, our study corroborates previous ones [13,18] and suggested these species originated from B genome species.

As mentioned above, the non A genome species from section *Arachis* with  $2n = 20$  chromosomes were placed in two clades. Molecular evidences based on markers such as RFLPs [42,49], RAPD [6,50], AFLP [17], and microsatellites [48] suggested that section *Arachis* diploids lacking the small A chromosome pair comprise a very diverse group, of which *A. ipaënsis*, *A. magna*, *A. williamsii*, and *A. valida*, closely linked in the present analysis, plus *A. gregoryi* [12] are those more closely associated to the B genome of *A. hypogaea*/*A. monticola*. Hybrids between *A. ipaënsis* and *A. magna* have shown 84% viable pollen [1]. Other kinds of evidences, such as molecular [6,28,43] and morphological [51] data, showed that these two species are closely related. Crossings between *A. williamsii* and *A. ipaënsis* resulted in hybrids with 66.9% of pollen stainability [52]. If the latter is the donor of the B genome to *A. hypogaea* [25], our data suggest that *A. ipaënsis*, *A. williamsii*, *A. magna* and *A. valida* could be used for the improvement of the B genome of cultivated peanut. This would increase the variability available for this purpose since a single accession of *A. ipaënsis* is available.

*Arachis batizocoi* was very close related to *A. cruziana*. *Arachis batizocoi* is considered a good genetic bridge to transfer genes to cultivated peanut [53,54]. If the phylogenetic relationships were correlated with the crossability, as observed among the A genome species [55,56], *A. cruziana* would have some crossability with *A. batizocoi* and could also be used as bridge for gene introgression in *A. hypogaea*. In fact,  $F_1$  hybrids between these two species had 36.4% of pollen viability (male fertility) and 0.3 I (univalents) and 9.9 II (bivalents) [18]. Thus, our data suggested that *A. cruziana* also can be a source of genes to *A. hypogaea* since it is very related to *A. batizocoi*.

*Arachis glandulifera* is classified as D genome since it does not cross with *A. hypogaea* and it has the most asymmetrical karyotype in genus *Arachis* [45]. *Arachis*

*glandulifera*, like the B genome species, does not show the small pair of chromosomes found in the A genome species. Isoenzyme [10], RFLP [42], RAPD [6], AFLP [18] and cytogenetical [57] data also showed that *A. batizocoi* and *A. glandulifera* were closely related. Our data suggest that *A. glandulifera* may be derived from a B genome ancestor species.

Through the analysis of the heterochromatic bands and 45 S rDNA loci patterns, the species previously classified as B genome were arranged into three groups called B (*A. ipaënsis*, *A. magna*, *A. gregoryi*, *A. valida* and *A. williamsii*), K (*A. batizocoi*, *A. cruziana*, and *A. krapovickasii*) and F (*A. benensis* and *A. trinitensis*) [21]. Our data supported the classification in B and K genomes. We have not analyzed species of the new F genome.

### Sections *Trierectoides*, *Erectoides* and *Procumbentes*

As mentioned before the circumscriptions of these three sections were not clear and because of that their results were presented and discussed together. Our results agreed with the classification proposed by Krapovickas [3] which had all species from those three sections in only one section, called *Erectoides*. The data partially agreed also to a more recent classification proposed by the same author [5], that divided section *Erectoides* in two sections (*Erectoides* and *Procumbensae*), since as it can be seen in Figure 1, species of *Erectoides* and *Trierectoides* were all in a same sub-clade and species of *Procumbentes* were placed all together with *A. paraguariensis* and *A. glabrata*.

*Arachis paraguariensis* shows low genetic affinity to the other species of section *Erectoides* and because it shows some morphological peculiarities in the root, flowers and fruits it was suggested that this species should be segregated in an independent section [1]. Our results also raised doubt about the classification of this species, and suggested that *A. paraguariensis* might be classified as belonging to section *Procumbentes*. The segregation of *A. paraguariensis* from other *Erectoides* species was also observed in phylogeny based on ITS data using parsimony analysis [22].

The placement of *A. glabrata* in a clade with *Procumbentes* and *Erectoides* species will be discussed in the section *Rhizomatosae* item.

The clade formed by sections *Erectoides*, *Trierectoides* and *Procumbentes* was the most related to section *Arachis*. Crossability data between members of sections *Arachis* and *Erectoides* suggest that these two sections are more phylogenetically related to each other than to the other sections of the genus since pollination has lead to fertilization. Although there has been no development of the resulting proembryos [58], members of the other sections do not even show such a degree of

success on crossings with section *Arachis* [55]. Isozyme and protein pattern data [8,10] suggested that section *Erectoides* and *Procumbentes* are closely related to the section *Arachis*.

#### Section *Caulorrhizae*

The morphological traits that have been traditionally used to distinguish the two type specimens of *A. pintoi* (GK 12787) and *A. repens* (GKP10538) are not sufficient to differentiate all the accessions collected, as they show intermediate phenotypes between the extreme types [59].

The clade was formed by the two species of section *Caulorrhizae*, confirming that *A. pintoi* and *A. repens* are very closely related. There were no differences between the sequences of *A. pintoi* (CIAT 22237 = W132) and *A. repens* (V 5868), and few differences of these two in relation to accession V 6791, also considered as *A. pintoi*. RAPD data also suggested they are very closely related [37]. F<sub>1</sub> hybrids between accession GK 12787 of *A. pintoi* and accession GKP 10538 of *A. repens*, which represent the extreme types, had 86.8% pollen fertility [55], which is higher than the level of pollen fertility found in intra-specific hybrids of crosses between accessions of some other *Arachis* species [45,60].

#### Section *Triseminatae*

The phylogenetic data showed that *A. triseminata* was not closely related to species of any other sections, in agreement with its placement in a separate section (*Triseminatae*) [1]. No successful crossings among *A. triseminata* and members of other sections were obtained [1,55], showing its genetic isolation from other sections of genus *Arachis*.

#### Section *Heteranthae*

*Arachis pusilla*, the only species of section *Heteranthae* included in this study, had a basal position, on the first radiation of genus *Arachis* (Figure 1) and closely related to *Extranervosae*, which formed the second radiation in the genus. The affinity of *Heteranthae* and *Extranervosae* sections agreed with floral morphology, geographical distribution and crossability data, since the only known intersectional hybrid of *Extranervosae* was obtained from a cross with *Heteranthae* [1].

#### Section *Rhizomatosae*

Cytogenetic data suggested that the origins of *Arachis* tetraploid species (*A. glabrata* and *A. hypogaea*) were independent [61]. An analysis using RFLP markers also showed that *A. glabrata* was very distinct from *A. hypogaea* [49]. In the present study, *A. glabrata* and *A.*

*hypogaea* were placed in different clades, confirming that the polyploid species evolved independently in the genus.

*Arachis glabrata* was more related to species of section *Procumbentes* than to *A. burkartii* which is also traditionally allocated in section *Rhizomatosae*, although in a series of its own. These species differed on the ploidy level, since *A. glabrata* is a tetraploid ( $2n = 4x = 40$ ) and *A. burkartii* a diploid species. Crossings between *A. glabrata* and diploid species from other sections resulted in hybrids, in contrast to *A. burkartii*, for which no hybrids were obtained from numerous attempted crosses [55]. The other tetraploid species analyzed (*A. hypogaea*) was placed close to diploid species that have similar genomes and are certainly involved in its origin [1,25]. Thus, the data indicated that the referred species of section *Rhizomatosae* did not have a monophyletic origin.

*Arachis glabrata* was placed in a clade with species from section *Erectoides* and *Procumbentes*. Tetraploid species of section *Rhizomatosae* were classified as EERR [55], and at that time the EE crossing group was attributed to section *Erectoides*, which comprised all species that, according to the last classification [1], are distributed in sections *Procumbentes*, *Erectoides* and *Trierecoides*. Thus, based in our and previous data we suggested the following hypothesis to the origin of *A. glabrata*: 1) *A. glabrata* originated from species of the *Erectoides* group, with rhizomes appearing twice, independently, in the evolution of genus *Arachis*; 2) *A. glabrata* is an allopolyploid EERR, as previously suggested [55], that resulted from a cross between one species from section *Erectoides* and one species from section *Rhizomatosae*, that had a genome not similar to the one found in *A. burkartii*.

#### Conclusion

The main clades established in this study in general agreed with many other studies that have used other types of evidences (morphological, crossability, biochemical, cytogenetical and molecular) and different species, being some of them included in our study and some not. Thus, the relationships established do reflect the affinity of the species, and that can be a useful framework for future systematic reviews of genus *Arachis* and for the selection of species to pre-breeding programs.

#### Methods

##### Plant material

A total of 55 accessions, which represent 45 species and the nine sections of the genus *Arachis* were analyzed (Table 2). These accessions were obtained from the

**Table 2 Accessions of genus *Arachis* analyzed in this study**

| Species   | Accession       | Genome <sup>1</sup> | Chromosome number/<br>Ploidy level <sup>2</sup> | GenBank Accession Numbers |
|---|-----------------|---------------------|---|---------------------------|
| <b>Sect. <i>Arachis</i></b>   |                 |                     |   |                           |
| <i>A. cardenasii</i> Krapov. & W.C.Greg.  | GKP 10017       | A                   | 2n = 2x = 20                                    | AY615236                  |
| <i>A. correntina</i> (Burkart) Krapov. & W.C.Greg.  | CIAT 22249      | A                   | 2n = 2x = 20                                    | AF203554                  |
| <i>A. duranensis</i> Krapov. & W.C.Greg.  | VNvEc 14167     | A                   | 2n = 2x = 20                                    | AY615240                  |
| <i>A. helodes</i> Mart. ex Krapov. & Rigoni   | VSGr 6325       | A                   | 2n = 2x = 20                                    | AY615241                  |
| <i>A. kuhlmannii</i> (1) Krapov. & W.C.Greg.  | VPoBi 9375      | A                   | 2n = 2x = 20                                    | AY615232                  |
| <i>A. kuhlmannii</i> (2)  | VSGr 6404       | A                   | 2n = 2x = 20                                    | AY615219                  |
| <i>A. kuhlmannii</i> (3)  | VPzRcSgSv 13530 | A                   | 2n = 2x = 20                                    | AY615238                  |
| <i>A. kuhlmannii</i> (4)  | VSPmSv 13721    | A                   | 2n = 2x = 20                                    | AY615243                  |
| <i>A. sp</i> (1)  | VSPmSv 13736    | A                   | 2n = 2x = 20                                    | AY615226                  |
| <i>A. linearifolia</i> Valls, Krapov. & C.E.Simpson   | VPoBi 9401      | A                   | 2n = 2x = 20                                    | AY615242                  |
| <i>A. microsperma</i> Krapov., W.C.Greg. & Valls  | VRGeSv 7681     | A                   | 2n = 2x = 20                                    | AY615221                  |
| <i>A. schininii</i> Krapov., Valls & C.E.Simpson  | VSW 9923        | A                   | 2n = 2x = 20                                    | AY615248                  |
| <i>A. simpsonii</i> Krapov. & W.C.Greg.   | VSPmSv 13728    | A                   | 2n = 2x = 20                                    | AY615247                  |
| <i>A. stenosperma</i> (1) Krapov. & W.C.Greg.   | Lm 1            | A                   | 2n = 2x = 20                                    | AY615252                  |
| <i>A. stenosperma</i> (2)   | VSPmW 13844     | A                   | 2n = 2x = 20                                    | AY615227                  |
| <i>A. villosa</i> Benth.  | VGoMrOv 12812   | A                   | 2n = 2x = 20                                    | AY615215                  |
| <i>A. hypogaea</i> L.   | Mf 1560         | AB                  | 2n = 4x = 40                                    | AY615267                  |
| <i>A. monticola</i> Krapov. & Rigoni  | VOa 14165       | AB                  | 2n = 4x = 40                                    | AY615239                  |
| <i>A. batizocoi</i> Krapov. & W.C.Greg.   | K 9484          | B                   | 2n = 2x = 20                                    | AY615256                  |
| <i>A. cruziana</i> Krapov., W.C.Greg. & C.E.Simpson   | WiSvG 1302      | B                   | 2n = 2x = 20                                    | AY615259                  |
| <i>A. hoehnei</i> (1) Krapov. & W.C.Greg.   | KG 30006        | A                   | 2n = 2x = 20                                    | AY615223                  |
| <i>A. hoehnei</i> (2) Krapov. & W.C.Greg.   | VPoBi 9146      | A                   | 2n = 2x = 20                                    | AY615224                  |
| <i>A. hoehnei</i> (3) Krapov. & W.C.Greg.   | VPoBi 9140      | A                   | 2n = 2x = 20                                    | AY615222                  |
| <i>A. ipaënsis</i> Krapov. & W.C.Greg.  | KGBPSSc 30076   | B                   | 2n = 2x = 20                                    | AY615257                  |
| <i>A. magna</i> (1) Krapov., W.C.Greg. & C.E.Simpson  | KGSSc 30097     | B                   | 2n = 2x = 20                                    | AY615230                  |
| <i>A. magna</i> (2)   | VSPmSv 13760    | B                   | 2n = 2x = 20                                    | AY615231                  |
| <i>A. williamsii</i> Krapov. & W.C.Greg.  | WiDc 1118       | B                   | 2n = 2x = 20                                    | AY615255                  |
| <i>A. valida</i> Krapov., & W.C.Greg.   | VPoBi 9153      | B                   | 2n = 2x = 20                                    | AY615244                  |
| <i>A. glandulifera</i> Stalker  | VSPmSv 13738    | D                   | 2n = 2x = 20                                    | AY615258                  |
| <i>A. decora</i> Krapov., W.C.Greg. & Valls   | VSPmPzRs 13290  | Unknown             | 2n = 2x = 18                                    | AY615237                  |
| <i>A. palustris</i> Krapov., W.C.Greg. & Valls  | VPmSv 13023     | Unknown             | 2n = 2x = 18                                    | AY615238                  |
| <i>A. praecox</i> Krapov., W.C.Greg. & Valls  | VSGr 6416       | Unknown             | 2n = 2x = 18                                    | AY615234                  |
| <b>Sect. <i>Erectoides</i></b> Krapov. & W.C.Greg.  |                 |                     |   |                           |
| <i>A. brevipetiolata</i> Krapov. & W.C.Greg.  | VMPzW 13959     | E                   | 2n = 2x = 20                                    | AY615251                  |
| <i>A. hermannii</i> Krapov. & W.C.Greg.   | VPoSv 10390     | E                   | 2n = 2x = 20                                    | AY615260                  |
| <i>A. major</i> (1) Krapov. & W.C.Greg.   | VRGeSv 7644     | E                   | 2n = 2x = 20                                    | AY615229                  |
| <i>A. major</i> (2)   | VRGeSv 7632     | E                   | 2n = 2x = 20                                    | AY615228                  |
| <i>A. paraguariensis</i> Chodat & Hassl. (1) subsp. <i>capibarensis</i> Krapov. & W.C.Greg. | VMPzW 14024     | E                   | 2n = 2x = 20                                    | AY615217                  |
| <i>A. paraguariensis</i> (2) subsp. <i>paraguariensis</i> Chodat & Hassl.                   | VRGeSv 7677     | E                   | 2n = 2x = 20                                    | AY615218                  |
| <b>Sect. <i>Trierectoides</i></b> Krapov. & W.C.Greg.                                       |                 |                     |   |                           |
| <i>A. guaranitica</i> Chodat & Hassl.   | VRcSgSv 13600   | E                   | 2n = 2x = 20                                    | AY615261                  |
| <i>A. tuberosa</i> Bong. ex Benth   | VRGeSv 7607     | E                   | 2n = 2x = 20                                    | AY615235                  |
| <b>Sect. <i>Procumbentes</i></b> Krapov. & W.C.Greg.  |                 |                     |   |                           |
| <i>A. appressipila</i> Krapov. & W.C.Greg.  | GKP 10002       | E                   | 2n = 2x = 20                                    | AY615254                  |



**Table 2 Accessions of genus *Arachis* analyzed in this study (Continued)**

|  |                            |                             |                             |           |
|--|----------------------------|-----------------------------|-----------------------------|-----------|
| <b>A. kretschmeri</b> Krapov. & W.C.Greg.            | KrRy s/n (IRFL 2273)       | E                           | 2n = 2x = 20                | AY615220  |
| <b>A. matiensis</b> Krapov., W.C.Greg. & C.E.Simpson | VSPmSv 13718               | E                           | 2n = 2x = 20                | AY615249  |
| <b>A. pflugeae</b> C.E.Simpson, Krapov. & Valls      | VRcSgSv 13589              | E                           | 2n = 2x = 20                | AY615233  |
| <b>A. sp (2)</b>                                     | VMPzW 14044                | E                           | 2n = 2x = 20                | AY615225  |
| <b>Sect. Rhizomatosae</b> Krapov. & W.C.Greg.        |                            |                             |                             |           |
| <b>Ser. Prorhizomatosae</b> Krapov. & W.C.Greg.      |                            |                             |                             |           |
| <b>A. burkartii</b> Handro                           | VZnMrOvW 12322             | R                           | 2n = 2x = 20                | AY615245  |
| <b>Ser. Rhizomatosae</b>                             |                            |                             |                             |           |
| <b>A. glabrata</b> var. <i>glabrata</i> Benth.       | Cv. Florigraze             | R                           | 2n = 4x = 40                | AY615250  |
| <b>Sect. Caulorrhizae</b> Krapov. & W.C.Greg.        |                            |                             |                             |           |
| <b>A. pintoii</b> Krapov. & W.C.Greg. (1)            | VSWSa 6791                 | C                           | 2n = 2x = 20                | AY615263  |
| <b>A. pintoii</b> (2)                                | CIAT 22237 = W132          | C                           | 2n = 2x = 20                | AF203551  |
| <b>A. repens</b> Handro                              | V 5868                     | C                           | 2n = 2x = 20                | AY615264  |
| <b>Sect. Triseminatae</b> Krapov. & W.C.Greg.        |                            |                             |                             |           |
| <b>A. triseminata</b> Krapov. & W.C.Greg.            | W 195                      | T                           | 2n = 2x = 20                | AY615253  |
| <b>Sect. Heteranthae</b> Krapov. & W.C.Greg.         |                            |                             |                             |           |
| <b>A. pusilla</b> Benth.                             | VRSv 10833                 | AM                          | 2n = 2x = 20                | AY615216  |
| <b>Sect. Extranervosae</b> Krapov. & W.C.Greg.       |                            |                             |                             |           |
| <b>A. burchellii</b> Krapov. & W.C.Greg.             | VGaRoSv 12618              | EX                          | 2n = 2x = 20                | AY615262  |
| <b>A. lutescens</b> Krapov. & Rigoni                 | VStGdW 7741                | EX                          | 2n = 2x = 20                | AY615246  |
| <b>A. villosulicarpa</b> Hoehne                      | VKSSv 8816                 | EX                          | 2n = 2x = 20                | AY615265  |
| <b>Outgroups</b>                                     |                            |                             |                             |           |
| <b>Chapmannia gracilis</b> Balf.f Thullin            | Miller & Alexander14039(E) | Not described in the source | Not described in the source | AF203545  |
| <b>Chapmannia sericea</b> : Thulin & Mc Kean         | Miller & Alexander14241(E) | Not described in the source | Not described in the source | AF203548  |
| <b>Stylosanthes capitata</b> Vogel                   | CIAT1693                   | Not described in the source | 2n = 4x (40)                | AF203549  |
| <b>Stylosanthes hamata</b>                           | Beyra M 595 (MONT)         | Not described in the source | 2n = 2x(20)                 | AF203550  |
| <b>Stylosanthes viscosa</b> Sw.                      | Clemente J C               | Not described               | 2n = 2x(20)                 | AY6152141 |

Collectors: B = D.J.Banks; Bi = L.B.Bianchetti; Dc = D. Claire; Ec = E.D.Cruz; G = W.C.Gregory; Ga = M.L.Galgaro; Gd = I.J.Godoy; Ge = M.A.N.Gerin; Go = K.E.Gomes; Gr = A.Gripp; J = L.Jank; K = A.Krapovickas; Kr = A.Kretschmer Jr.; Lm = L.Monçato; M = J.P.Moss; Mf = Est.Exp.Agr. Manfredi, Córdoba, Argentina; Mr = C.O.C. Moraes; Nv = L.Novara; Oa = O.Ahumada; Ov = J.C.Oliveira; P = J.Pietrarelli; Pm = R.N.Pittman; Po = A.Pott; Pz = E.A.Pizarro; R = V.R.Rao; Rc = R.C.Oliveira; Ro = D. M.S.Rocha; Rs = R.C.Santos; Ry = P.R.Rayman; S = C.E.Simpson; Sa = J.M.Santos; Sc = A. Schinini; Sg = A.K.Singh; St = H.T.Stalker; Sv = G.P.Silva; V = J.F.M.Valls; Vg = I.Vargas; W = W.L.Werneck; Wi = D.E.Williams; Zn = A.Zanin

1 - Genome designations follow abbreviations proposed by Smartt & Stalker [61] for taxonomic sections and group of species in section *Arachis* [53].

2 - Chromosome numbers are the observed for each species and compiled by Fernández & Krapovickas [39], Lavia & Fernández [44], Lavia et al [46,70]. Eventually, counts were obtained by the accessions listed.

Brazilian *Arachis* Germplasm Collection, maintained at Embrapa Recursos Genéticos e Biotecnologia - CENARGEN (Brasília-DF, Brazil). All plants were grown from seed or cuttings (sections *Rhizomatosae* and *Caulorrhizae*) under greenhouse conditions prior to DNA extraction. *Stylosanthes capitata*, *S. hamata*, *S. viscosa*, *Chapmannia gracilis* and *C. sericea* were used as

outgroups, because these genera are considered to be closely related to *Arachis* [1,30,31,62].

#### DNA extraction and PCR amplification

DNA was extracted from young leaflets of single plants, using a procedure previously described [63]. Primers ITS5 (5'GGAAGTAAAAGTCGTAACAAGG3') and

**ITS4** (5'TCCTCCGCTTATTGATATGTC3') were used to amplify the two internal transcribed regions, ITS1 and ITS2, and the 5.8 S gene [64]. Each amplification reaction contained 12  $\mu$ l of water, 1.5  $\mu$ l of magnesium chloride (50 mM), 2.6  $\mu$ l of 10 $\times$  *Taq* polymerase reaction buffer, 1.5  $\mu$ l of each primer (10 mM), 5.0  $\mu$ l of a 5 ng/ $\mu$ l DNA dilution, 2.2  $\mu$ l of dNTPs (2.5  $\mu$ M each) and 0.2  $\mu$ l of *Taq* DNA polymerase (5 U/ $\mu$ l). The reactions were performed on a PTC 100 (MJ Research) using the following program: an initial denaturing step (2 min at 94°C) followed by 35 cycles of the following steps: denaturing (1 min at 95°C), annealing (1 min at 55°C) and extension (1.30 min at 72°C); and a final extension step of 10 min at 72°C. The PCR products were purified using the kit Concert™Rapid PCR Purification System (Life Technologies) before sequencing.

#### DNA sequencing

PCR products were sequenced using the procedure proposed by Sanger *et al.* [65]. Each sequence reaction contained: 2  $\mu$ l of Big Dye™Terminator (Applied Biosystems), 1.5  $\mu$ l of PCR product (5 ng/ $\mu$ l), 0.5  $\mu$ l of primer solution (0.25 mM) and water up to 10  $\mu$ l. The primers used on the sequencing reactions were the same used on the amplification of the target fragments. The sequencing reactions were performed on a PTC 100 (M.J. Research) using the following program: 1 min at 96°C, 40 cycles of 10 sec at 96°C; 10 sec at 55°C; 4 min at 60°C. The sequencing was performed in an ABI PRISM 377 Automated DNA Sequencer (Perkin-Elmer/Applied Biosystems). Each DNA strand was sequenced at least twice to ensure the accuracy of the results.

#### Sequence and phylogenetic analysis

The phylogenetic analysis was the Bayesian Inference with the MCMC calculations implemented by Mr. Bayes 3.1 [66]. The best evolution model (GTR+G) was selected using mmodeltest [67] and PAUP 4b10 [68]. The model parameters were set in the alignment nexus file and then ran in Mr. Bayes 3.1, which performed 20,000,000 of generations, sampling trees in each 100 generations. The first 1250 trees were eliminated as the burn-in. The 50% majority consensus trees was inspected and prepared in figtree software.

#### Acknowledgements

This work was funded by Fundação de Amparo à Pesquisa do Estado de São Paulo (FAPESP). JFMV, CRL, MAG thank CNPq for their fellowships.

#### Author details

<sup>1</sup>Universidade de Marília, UNIMAR - Marília, SP, Brazil. <sup>2</sup>Embrapa Recursos Genéticos e Biotecnologia, C.P. 02372, 70770-917, Brasília, DF, Brazil.

<sup>3</sup>Departamento de Ciências Biológicas, Faculdade de Ciências e Letras, UNESP - Universidade Estadual Paulista, 19806-900, Assis, SP, Brazil.

<sup>4</sup>Departamento de Genética, Instituto de Biociências, UNESP - Universidade Estadual Paulista, 18618-000, Botucatu, SP, Brazil. <sup>5</sup>Departamento de

Bioquímica e Microbiologia, Instituto de Biociências, UNESP - Universidade Estadual Paulista, 13506-900, Rio Claro, SP, Brazil. <sup>6</sup>Centro de Estudos de Insetos Sociais, Instituto de Biociências, UNESP - Universidade Estadual Paulista, 13506-900, Rio Claro, SP, Brazil.

#### Authors' contributions

All authors read and approved the final manuscript. MDB carried out the data collection and analysis and drafted the manuscript. MCM participated in the drafting of the manuscript. DAP and JPM participated in the sequencing and sequence analysis. MBJ and JMJ participated in the phylogenetic analysis. JFMV participated in the conception of the project and provided the germplasm. CRL and MAG participated in conceiving the study and analysis, and participated in drafting the manuscript.

Received: 12 February 2010 Accepted: 19 November 2010  
Published: 19 November 2010

#### References

1. Krapovickas A, Gregory WC: Taxonomía del género *Arachis* (Leguminosae). *Bonplandia* 1994, **8**:1-186.
2. Valls JFM, Simpson CE: New species of *Arachis* L. (Leguminosae) from Brazil, Paraguay and Bolivia. *Bonplandia* 2005, **14**:35-64.
3. Krapovickas A: The origin, variability and spread of the peanut (*Arachis hypogaea*). In *The domestication and exploitation of plants and animals*. Edited by: Ucko J, Dimbleby C. Duckworth, London; 1969:427-440.
4. Gregory WC, Krapovickas A, Gregory MP: Structure, variation, evolution and classification in *Arachis*. In *Advances in Legume Science*. Edited by: Summerfield RJ, Bunting AH. Kew: Royal Botanic Gardens; 1980:469-481.
5. Krapovickas A: A taxonomic summary of the genus *Arachis*. *International Board for Plant Genetic Resources (IBPGR) - International Crop Network Series, 2. Report of a workshop on the genetic resources of wild species: Including preliminary descriptors for Arachis (IBPGR/ICRISAT) Rome, Italy. Appendix III* 1990, **9**.
6. Halward TM, Stalker HT, LaRue EA, Kochert G: Use of single primer DNA amplification in genetic studies of peanut. *Plant Mol Biol* 1992, **18**:315-325.
7. Lanham PG, Forster BP, McNicol P, Moss JP, Powell W: Seed storage protein variation in *Arachis* species. *Genome* 1994, **37**:487-496.
8. Singh AK, Gurtu S, Jambunathan R: Phylogenetic relationships in the genus *Arachis* based on seed protein profiles. *Euphytica* 1994, **74**:219-225.
9. Lu J, Pickersgill B: Isozyme variation and species relationships in peanut and its wild relatives (*Arachis* L. - Leguminosae). *Theor Appl Genet* 1993, **85**:550-560.
10. Stalker HT, Phillips TD, Murphy JP, Jones TM: Variation of isozyme patterns among *Arachis* species. *Theor Appl Genet* 1994, **87**:746-755.
11. Jung S, Tate PL, Horn R, Kochert G, Moore K, Abbott AG: The Phylogenetic relationship of possible progenitors of the cultivated peanut. *J Hered* 2003, **94**:334-340.
12. Burrow MD, Simpson CE, Faries W, Starr JL, Paterson AH: Molecular biogeography study of recently described B- and A-genome *Arachis* species, also providing new insights into the origins of cultivated peanut. *Genome* 2009, **52**:107-119.
13. Moretzsohn MC, Hopkins MS, Mitchell SE, Kresovich S, Valls JFM, Ferreira ME: Genetic diversity of peanut (*Arachis hypogaea* L.) and its wild relatives based on the analysis of hypervariable regions of the genome. *BMC Plant Biol* 2004, **4**:11.
14. Barkley NA, Dean RE, Pittman RN, Wang ML, Holbrook CC, Pederson GA: Genetic diversity of cultivated and wild-type peanuts evaluated with M13-tailed SSR markers and sequencing. *Genet Res* 2007, **89**:93-106.
15. Gimenes MA, Hoshino AA, Barbosa AVG, Palmieri DA, Lopes CR: Characterization and transferability of microsatellite markers of the cultivated peanut (*Arachis hypogaea*). *BMC Plant Biol* 2007, **7**:9.
16. Koppolu R, Upadhyaya HD, Dwivedi SL, Hoisington DA, Varshney RK: Genetic relationships among seven sections of genus *Arachis* studied by using SSR markers. *BMC Plant Biol* 2010, **10**:15.
17. Milla SR, Isleib TG, Stalker HT: Taxonomic relationships among *Arachis* sect. *Arachis* species as revealed by AFLP markers. *Genome* 2005, **48**:1-11.
18. Tallury SP, Hilu KW, Milla SR, Friend SA, Alsaghir M, Stalker HT, Quandt D: Genomic affinities in *Arachis* section *Arachis* (Fabaceae): molecular and cytogenetic evidence. *Theor Appl Genet* 2005, **111**:1229-1237.

19. Seijo GJ, Lavia GI, Fernandez A, Krapovickas A, Ducasse D, Moscone EA: Physical mapping of the 5 S and 18S-25 S rRNA genes by FISH as evidence that *Arachis duranensis* and *A. ipaënsis* are the wild diploid progenitors of *A. hypogaea* (Leguminosae). *Am J Bot* 2004, **91**:1294-1303.
20. Robledo G, Lavia GI, Seijo G: Species relations among wild *Arachis* species with the A genome as revealed by FISH mapping of rDNA loci and heterochromatin detection. *Theor Appl Genet* 2009, **118**:1295-1307.
21. Robledo G, Seijo G: Species relationships among the wild B genome of *Arachis* species (section *Arachis*) based on FISH mapping of rDNA loci and heterochromatin detection: a new proposal for genome arrangement. *Theor Appl Genet* 2010.
22. Wang CT, Wang XZ, Tang YY, Chen DX, Cui FG, Zhang JC, Yu SL: Phylogeny of *Arachis* based on internal transcribed spacer sequences. *Genet Resour Crop Evol* 2010.
23. Nóbile PM, Gimenes MA, Valls JFM, Lopes CR: Genetic variation within and among species of genus *Arachis*, section *Rhizomatosae*. *Genet Resour Crop Evol* 2004, **51**:299-307.
24. Angelici CMLCD, Hoshino AA, Nóbile PM, Palmieri DA, Valls JFM, Gimenes MA, Lopes CR: Genetic diversity in section *Rhizomatosae* of the genus *Arachis* (Fabaceae) based on microsatellite markers. *Genet Mol Biol* 2008, **31**:79-88.
25. Kochert G, Stalker HT, Gimenes MA, Galgalo L, Lopes CR, Moore K: RFLP and cytogenetic evidence on the origin and evolution of allotetraploid domesticated peanut *Arachis hypogaea* (Leguminosae). *Am J Bot* 1996, **83**:1282-1291.
26. Fávero AP, Simpson CE, Valls FJM, Velho NA: Study of evolution of cultivated peanut through crossability studies among *Arachis ipaënsis*, *A. duranensis* and *A. hypogaea*. *Crop Sci* 2006, **46**:1546-1552.
27. Cunha FB, Nóbile PM, Hoshino AA, Moretzsohn MC, Lopes CR, Gimenes MA: Genetic relationships among *Arachis hypogaea* L. (AABB) and diploid species with AA and BB genomes. *Genet Resour Crop Evol* 2008, **55**:15-20.
28. Moretzsohn MC, Barbosa AVG, Alves-Freitas DMT, Teixeira C, Leal-Bertioli SCM, Guimarães PM, Pereira RW, Lopes CR, Cavallari MM, Valls JFM, Bertioli DJ, Gimenes MA: A linkage map for the B-genome of *Arachis* (Fabaceae) and its synteny to the A-genome. *BMC Plant Biol* 2009, **9**:40.
29. Lashermes P, Combes MC, Trouslot P, Charrier A: Phylogenetic relationships of coffee-tree species (*Coffea* L.) as inferred from ITS sequences of nuclear ribosomal DNA. *Theor Appl Genet* 1997, **94**:947-955.
30. Lavin M, Thulin M, Labat JN, Pennington RT: Africa, the old man out: molecular biogeography of dalbergioid legumes (Fabaceae) suggests otherwise. *Syst Bot* 2000, **25**:449-467.
31. Lavin M, Pennington RT, Klitgaard BB, Sprent JI, Lima HC, Gasson PE: The dalbergioid legumes (Fabaceae): delimitation of a Pantropical monophyletic clade. *Am J Bot* 2001, **50**:550-560.
32. Álvarez I, Wendel JF: Ribosomal ITS sequences and plant phylogenetic inference. *Mol Phylogenet Evol* 2003, **29**:417-434.
33. Nieto Feliner G, Rosselló JA: Better the devil you know? Guidelines for insightful utilization of nrDNA ITS in species-level evolutionary studies in plants. *Mol Phylogenet Evol* 2007, **44**:911-919.
34. Zhu X-Y, Cai D-T, Ding Y: Molecular and cytological characterization of 5 S rDNA in *Oryza* species: genomic organization and phylogenetic implications. *Genome* 2008, **51**:332-340.
35. Bayer RJ, Soltis DE, Soltis PS: Phylogenetic inferences in *Antennaria* (Asteraceae: Gnaphalilae: Cassiinae) based on sequences from nuclear ribosomal DNA internal transcribed spacers (ITS). *Am J Bot* 1996, **83**:516-527.
36. Seijo G, Lavia GI, Fernandez A, Krapovickas A, Ducasse DA, Bertioli DJ, Moscone EA: Genomic relationships between the cultivated peanut (*Arachis hypogaea*, Leguminosae) and its close relatives revealed by double GISH. *Amer J Bot* 2007, **94**:1963-1971.
37. Gimenes MA, Lopes CR, Galgalo ML, Valls JFM, Kochert G: Genetic variation and phylogenetic relationships based on RAPD analysis in section *Caulorrhizae*, genus *Arachis* (Leguminosae). *Euphytica* 2000, **116**:187-195.
38. Palmieri DA, Bechara MD, Curi RA, Monteiro JP, Valente SES, Gimenes MA, Lopes CR: Genetic diversity analysis in the section *Caulorrhizae* (genus *Arachis*) using microsatellite markers. *Gen Mol Biol* 2010, **33**:109-118.
39. Fernández A, Krapovickas A: Cromosomas y evolución en *Arachis* (Leguminosae). *Bonplandia* 1994, **8**:187-200.
40. Fávero AP: Caracterização morfológica, citogenética e molecular de acessos de germoplasma da espécie *Arachis Kuhlmannii* Krapov. & W.C. Gregory (Secção *Arachis*). (Mestrado). UNESP: Botucatu; 1999, 159.
41. Raman VS: Studies in the genus *Arachis*. IV. Hybrid between *A. hypogaea* and *A. monticola*. *Indian Oilseeds J* 1958, **1**:20-23.
42. Kochert G, Halward T, Branch WD, Simpson CE: RFLP variability in peanut (*Arachis hypogaea* L.) cultivars and wild species. *Theor Appl Genet* 1991, **81**:565-570.
43. Raina SN, Mukai Y: Genomic in situ hybridization in *Arachis* (Fabaceae) identifies the diploid wild progenitors of cultivated (*A. hypogaea*) and related wild (*A. monticola*) peanut species. *Plant Syst Evol* 1999, **214**:251-262.
44. Lavia GI, Fernández A: Genome Size in wild and cultivated peanut germplasm. *Pl Syst Evol* 2008, **272**:1-10.
45. Stalker HT: A new species in section *Arachis* of peanuts with a D genome. *Am J Bot* 1991, **78**:630-637.
46. Lavia GI, Ortiz AM, Fernández A: Karyotypic studies in wild germplasm of *Arachis* (Leguminosae). *Genet Resour Crop Evol* 2009, **56**:755-764.
47. Lavia GI: Estudos cromosômicos em *Arachis* (Leguminosae). *Bonplandia* 1996, **9**:111-120.
48. Bravo JP, Hoshino AA, Angelici CMLCD, Lopes CR, Gimenes MA: Transferability and use of microsatellite markers for the genetic analysis of the germplasm of some *Arachis* section species of the genus *Arachis*. *Genet Mol Biol* 2006, **29**:516-524.
49. Halward TM, Stalker HT, LaRue EA, Kochert G: Genetic variation detectable with molecular markers among unadapted germplasm resources of cultivated peanut and wild species. *Genome* 1991, **34**:1013-1020.
50. Hilu KW, Stalker HT: Genetic relationships between peanut and wild species of *Arachis* sect. *Arachis* (Fabaceae): evidence from RAPDs. *Plant Syst Evol* 1995, **198**:167-178.
51. Stalker HT: A morphological appraisal of wild species in section *Arachis* of peanuts. *Peanut Sci* 1990, **17**:117-122.
52. Simpson CE, Faries MJ: Advances in the characterization of diversity in section *Arachis*: archeological evidence, crossing results and their relationship in the understanding the origins of *Arachis hypogaea* L. *Simpósio de Recursos Genéticos para a América Latina e Caribe: 19-22 November 2001. Londrina, Brazil* Instituto Agronômico do Paraná; 2001, 103-104.
53. Singh AK, Moss JP: Utilization of wild relatives in the genetic improvement of *Arachis hypogaea* L. 8. Synthetic amphidiploids and their importance in interspecific breeding. *Theor Appl Genet* 1986, **72**:433-439.
54. Burrow MD, Simpson CE, Starr JL, Paterson AH: Transmission genetics of chromatin from a synthetic amphidiploid to cultivated peanut (*Arachis hypogaea* L.): Broadening the gene pool of a monophyletic polyploid species. *Genetics* 2001, **159**:823-837.
55. Gregory MP, Gregory WC: Exotic germ plasm of *Arachis* L. interspecific hybrids. *J Hered* 1979, **70**:185-193.
56. Singh AK, Stalker HT, Moss JP: Cytogenetics and uses of alien genetic variation in groundnut improvement. In *Chromosome Engineering in Plants: Genetics, Breeding, Evolution. Part B*. Edited by: Tsuchiya T, Gupta PK. Amsterdam: Elsevier Science Publishers; 1990:65-76.
57. Robledo G, Seijo G: Characterization of the *Arachis* (Leguminosae) D genome using fluorescence in situ hybridization (FISH) chromosome markers and total genome DNA hybridization. *Genet Mol Biol* 2008, **31**:717-724.
58. Singh AK: Hybridization barriers among the species of *Arachis* L., namely of the sections *Arachis* (including the groundnut) and *Erectoides*. *Genet Resour Crop Evol* 1998, **45**:41-45.
59. Valls JFM: Variability in the genus *Arachis* and potential forage uses. In *Identifying Germplasm for Successful Forage Legume-Grass Interactions. Proceedings of a Symposium of the Crop Science Society of America*. Edited by: Springer TL, Pittman RN. USDA, Washington; 1996:15-27.
60. Stalker HT, Dhesi JS, Kochert G: Variation within the species *Arachis duranensis* Krap & W.C. Gregory, a possible progenitor of cultivated peanut. *Genome* 1995, **38**:1201-1212.
61. Smartt J, Stalker HT: Speciation and cytogenetics in *Arachis*. In *Peanut science and technology*. Edited by: Pattee HE, Young CT. Yoakun: American Peanut Research Education Society; 1982:21-49.
62. Vander Stappen J, De Laet J, Gama-López S, Van Campenhout S, Volckaert G: Phylogenetic analysis of *Stylosanthes* (Fabaceae) based on the internal transcribed spacer region (ITS) of nuclear ribosomal DNA. *Plant Syst Evol* 2002, **234**:27-51.

63. Doyle JJ, Doyle JL: **A rapid DNA isolation procedure for small quantities of fresh life tissue.** *Phytochem Bull* 1987, **19**:11-15.
64. White TJ, Bruns TD, Lee SB, Taylor JW: **Amplification and direct sequencing of fungal ribosomal RNA genes for phylogenetics.** In *PCR Protocols: A Guide to Methods and Applications*. Edited by: Innis M, Gelfand D, Sninsky J, White T. San Diego: Academic Press; 1990:315-322.
65. Sanger F, Nicklen S, Coulson AR: **DNA sequencing with chain-terminating inhibitors.** *Proc Natl Acad Sci USA* 1977, **74**:5463-5468.
66. Huelsenbeck JP, Ronquist F: **MRBAYES: Bayesian inference of phylogeny.** *Bioinformatics* 2001, **17**:754-755.
67. Nylander JAA: **MrModeltest v2.** Program distributed by the author Evolutionary Biology Centre, Uppsala University; 2004.
68. Swofford DL: **PAUP\* Phylogenetic analysis using parsimony (\*and other methods), v 4b10.** Sinauer Sunderland; 2002.
69. Valls JFM, Simpson CE: **Taxonomy, natural distribution, and attributes of *Arachis*.** In *Biology and Agronomy of Forage Arachis*. Edited by: Kerridge PC, Hardy B. Cali: CIAT; 1994:1-18.
70. Lavia G, Fernández A, Seijo J: **Cytogenetic and molecular evidences on the evolutionary relationships among *Arachis* species.** In *Plant Genome: Biodiversity and Evolution, Phanerogams-Angiosperm. Volume 1E*. Edited by: Sharma A. Enfield, NH: Science Publishers; 2008:101-134.

doi:10.1186/1471-2229-10-255

**Cite this article as:** Bechara et al.: Phylogenetic relationships in genus *Arachis* based on ITS and 5.8S rDNA sequences. *BMC Plant Biology* 2010 10:255.

**Submit your next manuscript to BioMed Central  
and take full advantage of:**

- Convenient online submission
- Thorough peer review
- No space constraints or color figure charges
- Immediate publication on acceptance
- Inclusion in PubMed, CAS, Scopus and Google Scholar
- Research which is freely available for redistribution

Submit your manuscript at  
[www.biomedcentral.com/submit](http://www.biomedcentral.com/submit)

