

Michiko Yamagata, MD, PhD, Series Editor

Endoscopic diagnosis of extrahepatic bile duct carcinoma: Advances and current limitations

Kiichi Tamada, Jun Ushio, Kentaro Sugano

Kiichi Tamada, Jun Ushio, Kentaro Sugano, Department of Gastroenterology and Hepatology, Jichi Medical University, Yakushiji, Tochigi 329-0498, Japan

Author contributions: Tamada K collected data, performed the analyses, drafted and revised the paper; Tamada J collected data, performed the analyses and edited the paper; Sugano K supervised the analyses and edited the paper.

Correspondence to: Kiichi Tamada, MD, Department of Gastroenterology and Hepatology, Jichi Medical University, Yakushiji, Tochigi 329-0498, Japan. tamadaki@jichi.ac.jp

Telephone: +81-285-587348 Fax: +81-285-448297

Received: July 28, 2010 Revised: September 16, 2010

Accepted: September 23, 2010

Published online: May 10, 2011

Abstract

The accurate diagnosis of extrahepatic bile duct carcinoma is difficult, even now. When ultrasonography (US) shows dilatation of the bile duct, magnetic resonance cholangiopancreatography followed by endoscopic US (EUS) is the next step. When US or EUS shows localized bile duct wall thickening, endoscopic retrograde cholangiopancreatography should be conducted with intraductal US (IDUS) and forceps biopsy. Fluorescence *in situ* hybridization increases the sensitivity of brush cytology with similar specificity. In patients with papillary type bile duct carcinoma, three biopsies are sufficient. In patients with nodular or infiltrating-type bile duct carcinoma, multiple biopsies are warranted, and IDUS can compensate for the limitations of biopsies. In preoperative staging, the combination of dynamic multi-detector low computed tomography (MDCT) and IDUS is useful for evaluating vascular invasion and cancer depth infiltration. However, assessment of lymph nodes metastases is difficult. In resectable cases, assessment of longitudinal cancer spread is important. The combination of IDUS and MDCT is useful for revealing submucosal cancer extension, which is common in hilar cholangiocarcinoma. To estimate the mucosal exten-

sion, which is common in extrahepatic bile duct carcinoma, the combination of IDUS and cholangioscopy is required. The utility of current peroral cholangioscopy is limited by the maneuverability of the "baby scope". A new baby scope (10 Fr), called "SpyGlass" has potential, if the image quality can be improved. Since extrahepatic bile duct carcinoma is common in the Far East, many researchers in Japan and Korea contributed these studies, especially, in the evaluation of longitudinal cancer extension.

© 2011 Baishideng. All rights reserved.

Key words: Bile duct cancer; Bile duct carcinoma; Cholangiocarcinoma; Endoscopic retrograde cholangiopancreatography; Intraductal ultrasonography

Peer reviewer: Hiroki Yamaue, MD, Second Department of Surgery, Wakayama Medical University, School of Medicine, 811-1 Kimiidera, Wakayama 641, Japan

Tamada K, Ushio J, Sugano K. Endoscopic diagnosis of extrahepatic bile duct carcinoma: Advances and current limitations. *World J Clin Oncol* 2011; 2(5): 203-216 Available from: URL: <http://www.wjgnet.com/2218-4333/full/v2/i5/203.htm> DOI: <http://dx.doi.org/10.5306/wjco.v2.i5.203>

INTRODUCTION

Most patients with bile duct cancer are diagnosed in an advanced stage^[1-3]. From 1998 to 2004, the 5-year survival rate after surgical resection was 33.1% for bile duct cancer in Japan^[3]. To improve the therapeutic effect of bile duct carcinoma, efforts have been focused on diverse areas: early detection of the lesions, accurate differentiation of benign and malignant biliary stenosis, assessment of locoregional tumor extension, development of surgical methods, biliary stenting, and chemoradiotherapy for unresectable bile duct cancer.

In the diagnosis of intrahepatic cholangiocarcinoma, non-invasive, cross-sectional imaging tests including computed tomography (CT) and magnetic resonance imaging (MRI) are useful. MRI in the form of magnetic resonance cholangiopancreatography (MRCP) and multi-detector low CT (MDCT) are the most commonly performed imaging tests in these patients. In contrast, for the diagnosis of extrahepatic bile duct cancer, an endoscopic approach is essential. Endoscopic techniques are more invasive and include the use of endoscopic retrograde cholangiopancreatography (ERCP) and endoscopic ultrasonography (EUS). In this review, we describe the advances and current limitations of our professional area: endoscopic procedures in the diagnosis of extrahepatic bile duct carcinoma.

EARLY DETECTION OF EXTRAHEPATIC BILE DUCT LESIONS

Tompkins *et al*^[1] reported that 91% of patients with bile duct cancer who underwent surgery had serum bilirubin levels greater than 2.0 mg/dL. Tio *et al*^[2] reported that almost all patients were diagnosed after developing obstructive jaundice, and only two of 76 patients showed stage T1 disease. In contrast, Sugiyama *et al*^[4] reported that 18 of 103 patients showed no jaundice, and eight of 103 patients had stage T1 disease. When a patient complained of abdominal discomfort or showed an elevation of serum biliary enzymes, they routinely performed ultrasonography (US) to screen for pancreatobiliary ductal diseases, which resulted in the early detection of lesions with good prognosis.

US

In the middle and distal bile duct, US cannot assess tumors sufficiently due to disturbance by gastrointestinal gas^[5]. Even now, the sensitivities of US in demonstrating hilar tumor, middle bile duct tumor, and distal bile duct tumor are 85.6%, 59.1%, and 33.3%, respectively^[5]. Therefore, bile duct dilatation on US findings is an important sign for the early diagnosis of bile duct cancer^[5]. Our group has reported an asymptomatic unicteric patient with bile duct carcinoma, in whom US at the time of health examination showed dilatation of the bile duct^[6]. In most countries, routine US examination for these patients might be difficult due to cost-effectiveness. In Japan, US equipment has become popular even in small clinics in the past two decades, and screening of the biliary tract using US is increasingly performed.

MRCP

Until recently, when US showed dilatation of the bile duct, ERCP was the next step to obtain cholangiography. Recently, MRCP has become an alternative to ERCP as it is a non-invasive modality^[7,8]. When US shows intraductal tumor, initial ERCP rather than MRCP should be carried out for cost-effectiveness, even if the patient shows no

jaundice. However, when US shows only dilatation of the extrahepatic bile duct, MRCP is a safe modality to obtain a clear cholangiogram.

A recent excellent prospective study by Sai *et al*^[7] demonstrated that MRCP showed a sensitivity of 90% in evaluating extrahepatic bile duct carcinoma in the non-icteric stage. They investigated non-icteric patients who had abnormal concentrations of serum biliary enzymes and whose common hepatic duct was more than 8 mm in diameter on abdominal US due to unknown reasons. In this study, 10 patients were diagnosed with extrahepatic carcinoma including 5 patients in T1 stage during a 7-year period.

EUS

By using intraduodenal scanning, in the extrahepatic bile duct, EUS can provide high resolution power without echo attenuation and without the influence of gastrointestinal gas. When evaluating extrahepatic bile duct carcinoma in the non-icteric stage, the sensitivity and specificity of MRCP followed by EUS were 90% and 98%, respectively^[7]. In another study, in 32 patients with normal serum liver enzymes and whose common bile duct was dilated on US findings, EUS did not show biliary malignancy^[9]. Therefore, the patients who had abnormal concentrations of serum biliary enzymes and whose common hepatic duct was dilated on abdominal US will be good targets for EUS. EUS was also useful in diagnosing distal biliary strictures without a mass on CT^[10].

Fernández-Esparrach *et al*^[8] also performed a prospective study of MRCP and EUS in the evaluation of 63 patients with unexplained common bile duct dilation on standard US, although most of these patients had jaundice. The sensitivity and specificity of MRCP in diagnosing malignancy in these patients were 95% and 98%, respectively. The sensitivity and specificity of EUS were 100% and 100%, respectively^[8].

ACCURATE DIFFERENTIATION OF BENIGN AND MALIGNANT BILIARY STRICTURES

ERCP

An ERCP image of a patient with extrahepatic bile duct carcinoma in the non-icteric stage is shown in Figure 1.

On ERCP or MRCP findings, benign diseases including post-operative stenosis, chronic pancreatitis, primary sclerosing cholangitis, or autoimmune pancreatitis show bile duct stenosis as well as malignant disease^[11-13]. Cholangiography shows filling defects at the common bile duct in patients with adenomyoma^[11] or inflammatory strictures^[12]. Therefore, accurate distinction between benign and malignant biliary structures is essential to avoid unnecessary surgery.

The accuracy of MRCP is comparable with that of ERCP^[13]. Malignancy is suggested when cholangiography shows long (greater than 10 mm), asymmetric, and irreg-

Table 1 Sensitivity rates for detection of malignancy by endoscopic brush cytology of a biliary stricture

Authors and year	Country	Panc cancer	Bile duct cancer	Specificity
Venu <i>et al</i> ^[21] , 1990	USA	60% (3/5)	80% (20/25)	100% (88/88)
Rupp <i>et al</i> ^[22] , 1990	USA	91% (21/23)	100% (6/6)	88% (7/8)
Foutch <i>et al</i> ^[23] , 1991	USA	0% (0/6)	100% (5/5)	100% (3/3)
Ryan <i>et al</i> ^[24] , 1991	USA	30% (6/20)	44% (4/9)	100% (17/17)
Howell <i>et al</i> ^[25] , 1992	USA	0% (0/18)	50% (2/4)	100% (5/5)
Kurzawinski <i>et al</i> ^[26] , 1993	Great Britain	65% (15/23)	60% (6/10)	100% (7/7)
Ferrari Júnior <i>et al</i> ^[27] , 1994	USA	66% (16/29)	20% (2/10)	100% (22/22)
Ponchon <i>et al</i> ^[28] , 1995	France	15% (3/20)	44% (12/25)	97% (64/66)
Sugiyama <i>et al</i> ^[29] , 1996	Japan	36% (5/14)	59% (10/17)	100% (12/12)
Mansfield <i>et al</i> ^[30] , 1997	Great Britain	38% (10/28)	63% (10/16)	100% (2/2)
Vandervoort <i>et al</i> ^[31] , 1999	USA	11% (5/46)	30% (3/10)	100% (37/37)
Glasbrenner <i>et al</i> ^[32] , 1999	Germany	35% (11/31)	80% (16/20)	90% (19/21)
Jailwala <i>et al</i> ^[33] , 2000	USA	24% (11/46)	23% (7/30)	100% (29/29)
Farrell <i>et al</i> ^[34] , 2001	USA	78% (14/18)	60% (6/10)	83% (10/12)
Fogel <i>et al</i> ^[35] , 2006	USA	36% (32/88)	26% (10/38)	100% (8/8)
Kitajima <i>et al</i> ^[36] , 2007	Japan	60% (9/15)	71% (15/21)	100% (7/7)

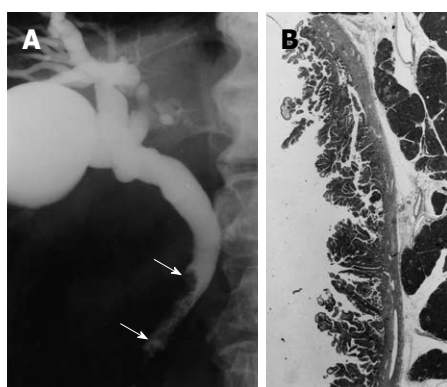


Figure 1 Cholangiographic finding of extrahepatic bile duct carcinoma in the non-icteric stage. A: Cholangiography shows a papillary tumor at the distal common bile duct (arrows); B: The histologic findings of the resected specimen showed papillary adenocarcinoma confined to the mucosal layer (hematoxylin and eosin, × 1).

ular strictures. Benign disease is suggested when cholangiography shows short, regular, and symmetric strictures. Using these criteria, the diagnostic sensitivity and specificity for ERCP were 74% and 70%, respectively. The diagnostic sensitivity and specificity for MRCP were 70% and 72%, respectively^[13].

Although ERCP is conducted for the purpose of biliary drainage to release obstructive jaundice, the utility of preoperative biliary drainage is controversial. Some reports indicate that preoperative biliary drainage increased infectious complications after hepatectomy for proximal bile duct tumor^[14]. In preoperative biliary drainage for cholangiocarcinoma, endoscopic nasobiliary drainage (NBD) is preferable to endoscopic biliary stenting, because secondary cholangitis due to the retrograde flow of duodenal fluid into the biliary tree does not occur^[15-17]. NBD is also useful to obtain a clear cholangiogram to evaluate longitudinal cancer extension along the bile duct, which is common in cholangiocarcinoma^[15-17]. In contrast, a clear cholangiogram is unnecessary in patients with pancreatic cancer, since longitudinal cancer exten-

sion is rare in these patients. One randomized controlled trial of preoperative biliary drainage for cancer of the head of the pancreas has been reported^[18]. This report concluded that routine preoperative biliary drainage in patients undergoing surgery for cancer of the pancreatic head, with obstructive jaundice and a bilirubin level less than 14.6 mg/dL, increases the rate of complications. Therefore, we agree that routine ERCP is not required in patients with pancreatic cancer.

Bile cytology during ERCP

In some prospective studies, bile exfoliative cytology aspirated after insertion of an external biliary catheter showed disappointing results (sensitivity 6%-24%)^[19,20]. Brush cytology has a specificity of nearly 100%^[21-38]. When its specificity is 100%, its sensitivity for cholangiocarcinoma ranges from 23% to 80%^[21-36] as shown in Table 1. Its sensitivity for pancreatic cancer is low, ranging from 0% to 66%^[21-36], even now. The low sensitivity is related to low cellularity of these tumors and the demoplastic reaction. A new long brush did not improve results^[35]. Repeated brushing improved the sensitivity from 35% to 44% ($P = 0.01$), although dilation of the stenosis did not improve its sensitivity^[38] (Table 1).

Percutaneous transhepatic cholangioscopy

Percutaneous transhepatic cholangioscopy (PTCS) is predominantly performed in Asian countries such as Japan, Korea, and Taiwan, where there is a high prevalence of intrahepatic stones and cholangiocarcinoma^[39-53]. Even in patients with non-dilated intrahepatic bile duct, percutaneous transhepatic biliary drainage (PTBD) can be performed with the assistance of cholangiography *via* NBD^[52,53]. Once the PTBD tract is established, insertion of the cholangioscope from the percutaneous tract is relatively easy. On cholangioscopic findings, irregularly dilated and tortuous vessels, so called “tumor vessels”, are good targets for biopsy^[39-50]. Although PTCS is an excellent procedure to obtain the target biopsy with a

Table 2 Sensitivity rates for detection of malignancy by endoscopic forceps biopsy of a biliary stricture

Authors and year	Country	Panc cancer	Bile duct cancer	Specificity
Kubota <i>et al</i> ^[54] , 1993	Japan	50% (2/4)	89% (16/18)	100% (5/5)
Ponchon <i>et al</i> ^[28] , 1995	France	46% (6/13)	44% (7/16)	97% (35/36)
Sugiyama <i>et al</i> ^[29] , 1996	Japan	71% (10/14)	88% (15/17)	100% (12/12)
Jailwala <i>et al</i> ^[33] , 2000	USA	33% (15/46)	30% (9/30)	100% (10/10)
Tamada <i>et al</i> ^[59] , 2002	Japan	50% (6/12)	84% (21/25)	100% (18/18)
Kitajima <i>et al</i> ^[36] , 2007	Japan	60% (9/15)	57% (12/21)	100% (7/7)

sensitivity of 93%-96%^[39-41], it requires an invasive technique compared to the transpapillary approach. The sensitivities of the target biopsy for bile duct carcinoma, pancreatic carcinoma, and gallbladder carcinoma are 95.7% (135/141), 67.2% (45/67), and 76.2% (48/63), respectively^[39,41].

The numbers and locations of the biopsies required to make a diagnosis of carcinoma depend on the origin and cholangioscopic appearance of the tumor^[45]. A diagnosis of carcinoma was made in all patients (*n* = 4) with a tumor of the papilla of Vater and in all patients (*n* = 15) with a polypoid bile duct tumor, with two biopsies from the tip of the polypoid mass. In patients with bile duct cancer of the stenotic type (*n* = 19), cancer was diagnosed in 95% of cases when three biopsies were taken from the margin of the stenotic area rather than within the area of the stenosis. When cholangioscopy showed a tortuous, dilated vessel (*n* = 10), the diagnosis of cancer was made with two biopsies taken from the margin of the stenosis rather than inside the stenosis. In the patients with metastatic bile duct cancer (*n* = 14), the diagnosis was made in only 43% of cases when three biopsies were taken from the margin of the area of stenosis. When combined with results from the three biopsies taken from within the area of stenosis, the sensitivity for diagnosing pancreatic cancer improved from 20% to 60%^[45].

Transpapillary biopsy

The sensitivity of transpapillary bile duct biopsy is reported to be 52%-81%^[28,29,34,54-62] as shown in Table 2. In these series, various biliary diseases, including pancreatic cancer and gallbladder cancer are included. When the tumor is located outside the bile duct (pancreatic or gallbladder cancer), the sensitivity of the biopsy is low (50%-71%). However, in patients with bile duct carcinoma, the sensitivity of transpapillary bile duct biopsy is 84%-89%^[29,54,56,57,59]. Sugiyama *et al*^[29] designed new biopsy forceps which could be introduced into the bile duct without sphincterotomy. Once the guidewire is introduced into the bile duct, the forceps can be inserted into the bile duct along the placed guidewire^[56-59]. In the patient with cholangiocarcinoma, the diagnostic results of this clamshell type forceps with a soft outer Teflon sheath (Olympus Optimal. Co. Ltd.)^[29,54,59] is superior to that of triple tissue sampling using the Howell system^[33,55]. Ropeway-type biopsy forceps are also commercially available now^[57]. Selective biopsy of both hepatic ducts is also possible^[58]. Dumonceau *et al*^[62]

used a giant basket to grasp the tissue, and reported a sensitivity of 80%.

The required number and the location of biopsy should be selected according to the type of tumor. In patients with papillary (polypoid) type bile duct carcinoma, three biopsies from the tip of the polypoid lesion were sufficient for the diagnosis with a sensitivity of 100%^[59,63]. In patients with nodular or infiltrating type cholangiocarcinoma, multiple biopsies from the margin of the stenosis and within the stenosis improve sensitivity^[59,63]. Since endoscopic skill is an art, endoscopists must sufficiently manipulate the tip of the forceps by free hand according to the gross finding of the tumor to improve the sensitivity of the method. The passion to improve the results is important as well as objective comparison with published data. In patients with pancreatic cancer, this modality has limitations, and other methods should be selected if ERCP tissue sampling shows negative results^[29,54,59].

Percutaneous transhepatic intraluminal biopsy

Via the PTBD route, multiple intraluminal biliary ductal biopsies using a sheath with a side port show good results^[63]. In patients with polypoid-type cholangiocarcinoma, the sensitivities of a single biopsy and 2 biopsies were 67% (4/6) and 100% (6/6), respectively. In patients with nodular-type cholangiocarcinoma, the sensitivities of a single biopsy, 3 biopsies, 6 biopsies, and 9 biopsies were 40% (4/6), 80% (16/20), 90% (18/20), and 95% (19/20), respectively. These results suggest that repeated biopsies may improve the sensitivity of transpapillary biopsy in patients with nodular-type cholangiocarcinoma.

Advanced techniques in cytology

Advanced cytologic techniques, including digitized image analysis (DIA) and fluorescence *in situ* hybridization (FISH), have been used to increase the sensitivity of bile cytology^[64-67]. The DIA technique quantitates nuclear DNA *via* special stains to assess the presence of aneuploidy, whereas FISH analysis detects chromosomal polyploidy by using fluorescent probes.

In a prospective study, when routine cytology was negative, FISH had an increased sensitivity (35%-60%) compared to routine cytology, however, the sensitivity and specificity of DIA was intermediate as compared to routine cytology^[64]. In another prospective study, DIA increased the sensitivity from 15% to 43%, but decreased the specificity from 100% to 92%^[65]. FISH increased the

sensitivity from 15% to 44%, with similar specificities (98% for FISH and 100% for routine cytology)^[65]. In patients with negative brush cytology and forceps biopsy, DIA, FISH, and composite DIA/FISH were able to predict malignant diagnoses in 14%, 62%, and 67%, respectively^[66]. In another comparative study, FISH increased the sensitivity from 20.1% to 42.9% compared to routine cytology, with similar specificities (99.8% for FISH and 100% for routine cytology). DIA was not a significant independent predictor of malignancy^[67]. These results show that FISH is a useful technique to improve the diagnostic ability of cytology.

“Mother-baby” system - peroral cholangioscopy

A small caliber (3.2-4.1 mm) “baby” cholangioscope is inserted into the common bile duct through the channel of a large caliber “mother” duodenoscope^[68-75]. To date, there have been only a few large studies on diagnostic peroral cholangioscopy (POCS) in biliary-tract diseases, despite many reports on therapeutic POCS and diagnostic PTCS. The utility of POCS is further limited by the fragility of the cholangioscopes and insufficient optical resolution. Biopsies can be performed through the cholangioscope, but adequate sampling remains challenging due to the small size of the working channel (1.2 mm) and the limited maneuverability of the long baby scope.

Fukuda *et al.*^[68] reported that the diagnostic criteria of PTCS^[39-41] was useful in POCS, and that the addition of POCS improved diagnostic ability compared with endoscopic retrograde cholangiography/tissue sampling (accuracy 78%-93.4%, sensitivity 57.9%-100%). In recent years, the development of video cholangioscopy has largely overcome the issue of poor image quality^[71-75]. This improvement due to video cholangioscopy can provide better quality images, resulting in the ability to observe each lesion clearly and to perform the correct target biopsy. Furthermore, video cholangioscopy makes it possible to use the narrow-banding imaging (NBI) system^[71,73]. Itoi *et al.*^[71] reported that POCS combined with NBI could clarify the fine surface structure of lesions and mucosal vessels compared with conventional white-light observation in all cases. These results suggest that POCS combined with NBI may lead to higher detectability of biliary-tract lesions, even minute lesions. One problem of NBI cholangioscopy is that bile is recognized as an incoming reddish fluid similar to blood^[71]. This is a significant issue that requires improvement, because it leads to poor images, and it is time consuming to clean the bile duct.

Carbon dioxide insufflation is a tactic for obtaining clear images of the bile duct during POCS^[75].

Direct cholangioscopy

In one of the first reports of POCS in 1977, a straight-view fiberscope of 8.8 mm diameter could be directly inserted through the mouth, into the biliary system after an endoscopic sphincterotomy, without the need for a mother scope^[76]. Our research group also reported the

utility of direct POCS in 1982, using a previously placed balloon catheter in the intrahepatic bile duct as the anchor system^[77]. Since this system has the limitation of poor insertion rates of cholangioscopy, the modality was replaced by the “mother baby” system. However, recently a thin-caliber gastroscoposcope made it possible to perform this method again^[78-80]. Only one endoscopist is necessary, and the larger working channel (2.0 mm) of the endoscope allows for large biopsies^[78-80]. This modality may be useful for the evaluation of intraductal papillary mucinous neoplasms of the bile duct^[81].

SpyGlass

Recently, the SpyGlass peroral cholangio-pancreatoscopy system (Boston Scientific Co., Natick, MA, USA) has been introduced^[82-84]. This system uses a reusable optical probe, a disposable access and delivery catheter (SpyScope), and disposable biopsy forceps. The outer diameter of the SpyScope is 10 French. This system offers several advantages over previous cholangioscopes. It allows for single-operator control of both the duodenoscope and the SpyScope because the SpyScope catheter is mounted on the duodenoscope by a silastic belt. The endoscopist can sequentially manipulate both the duodenoscope and the SpyScope with one hand; thus, two endoscopists are not needed. This system also uses 4-way tip deflection, which allows for improved access of tertiary ducts. Furthermore, the irrigation channel (0.6 mm) is separate from the working channel (1.2 mm), which allows for sustained continuous irrigation even if the working channel is in use. Therefore, the SpyGlass system can be used for cholangioscopic-guided target biopsy^[84]. The sensitivity and specificity of SpyGlass-directed biopsy was 71% and 100%, respectively, in an evaluation of intraductal lesions in 20 patients^[84].

Intraductal US

When the findings of ERCP or MRCP are equivocal, we have been performing transpapillary intra-bile ductal US to detect small tumors or localized wall thickening^[6,59]. Ultrasound imaging of the intra-bile duct using a thin (2.0 to 2.4 mm in diameter), high-frequency (15 to 20 MHz) ultrasonic probe, called “intraductal ultrasonography”, is capable of producing high quality cross-sectional images of the bile duct, and is used for the differential diagnosis of biliary strictures^[6,44,59,60,66,85-89].

Many investigators have reported that intraductal US (IDUS) could compensate for the false negative results of ERCP tissue diagnosis^[59,60,66,85-89]. Multiple regression analysis showed that the presence of a sessile tumor (intraductal or outside the bile duct: $P < 0.05$), tumor size greater than 10.0 mm ($P < 0.001$), and interrupted wall structure ($P < 0.05$) were independent variables that predicted malignancy^[59]. We must bear in mind, however, that asymmetric localized bile duct wall thickening with normal bile duct structure on IDUS images occurs in primary sclerosing cholangitis and other inflammatory changes as well as in bile duct carcinoma^[44,59].

Optimal coherence tomography

Optimal coherence tomography (OCT) is a new technique that produces cross-sectional images using infrared light. OCT has an axial resolution which is 10-fold better than that of high-frequency ultrasound. However, its depth penetration is limited to approximately 1 mm *vs* 10 mm for a 20 MHz ultrasound probe.

Preliminary studies have demonstrated the ability of OCT to generate high resolution images of the biliary tree that correlate with histological findings^[90,91]. OCT has the potential to identify small bile duct lesions, however, it is not widely available except in a few centers. Therefore the role of OCT in the diagnostic workup of bile duct carcinoma is not yet established.

EUS-fine-needle aspiration

In patients with extrahepatic bile duct carcinoma, percutaneous US-guided fine-needle aspiration (FNA) is difficult, since these tumors are too small. On the other hand, EUS has high-resolution power imaging and can puncture lesions of 3 mm or greater^[92-98].

In one study, sensitivity was better for ERCP-based techniques (brush cytology and forceps biopsy) in biliary tumors (ERCP 75% *vs* EUS 25%), whereas EUS-guided biopsy was superior for pancreatic masses (EUS 60% *vs* ERCP 38%)^[93]. Therefore, pancreatic cancer is a good target for EUS-FNA. In recent studies of EUS-FNA in patients with hilar strictures with negative brush cytology, the diagnostic sensitivity, specificity, and accuracy were 77%-89%, 100%, and 79%-91%, respectively^[94,96]. A potential risk of this modality is intraperitoneal seeding. In patients with unresectable bile duct cancer, EUS-FNA may be conducted after negative ERCP results^[97,98].

ASSESSMENT OF CANCER DEPTH INFILTRATION

Accurate diagnosis of the extent of the cancer is essential to enable selection of the appropriate medical and surgical therapy. On dynamic CT findings, extrahepatic cholangiocarcinoma may be seen as a focal thickening of the ductal wall with various enhancement patterns. Until now, in many cases of extrahepatic cholangiocarcinoma, visualization of the tumor was not definitive because they were too small to be detected, as previously reported^[5-10,59,60,66,86-89]. More recent studies, however, have shown the utility of modern contrast-enhanced MDCT in the preoperative staging of hilar cholangiocarcinoma^[99-105]. The diagnostic ability of 16-channel MDCT is excellent^[99,104]. The diagnostic ability of dynamic MRI combined with MRCP using a 1.5 T MR system is comparable with MDCT^[105-107]. The reports which clarified the utility of MDCT for the staging of extrahepatic cholangiocarcinoma are limited compared to hilar cholangiocarcinoma^[101,108].

IDUS is utilized to compensate for dynamic MDCT to demonstrate the tumor extension in the hepatoduo-

denal ligament. IDUS has become a promising modality in assessing the depth of cancer infiltration in the bile duct^[109-118]. In recent years, three-dimensional IDUS has become an excellent modality for assessing tumor staging^[114,116]. However, IDUS could not assess tumor invasion outside the hepatoduodenal ligament, for example, in the superior mesenteric vein, proper hepatic artery or left hepatic artery due to echo attenuation. In addition, IDUS can not assess distant metastases. Therefore, the combination of dynamic CT and IDUS is essential for accurate preoperative staging.

Vascular invasion

MDCT correctly revealed hepatic artery invasion with 75%-100% sensitivity and 90%-100% specificity and portal vein invasion with 92.3%-100% sensitivity and 80%-100% specificity^[99-105,108].

On IDUS, when the high-echoic layer between the tumor and a vessel disappeared, it was diagnosed as positive for vascular invasion. Using this criterion, the accuracies of IDUS in assessing tumor invasion to the right hepatic artery and portal vein were 86%-100% and 92%-100%, respectively^[87,109-118]. However, visualization of the left hepatic artery and proper hepatic artery was poor (14%/18%) due to anatomical reasons which caused ultrasound attenuation^[112,113]. Some investigators reported that 3D-IDUS may improve diagnostic accuracy for the detection of tumor invasion into the portal vein and the hepatic artery^[114,116].

Lymph node metastases

Dynamic CT detected lymph node swelling, however, it was not effective in differentiating whether the swelling indicated an inflammatory or a malignant change^[108,119-121]. The accuracy of MDCT in evaluating lymph node metastases was 57%-69%^[108,119-121]. The accuracy of CT for the characterization of paraaortic nodes was not different from that of MRI^[119]. A short axis-diameter over 5.3 mm, irregular margin, and the presence of central necrosis were suggestive morphologic features of malignant nodes^[119]. Another report also showed that a round node with a short-axis diameter exceeding 18 mm showed high positive predictive values of malignancy (67%). However, CT was not useful since nodes of this size and character were rare^[120].

On IDUS, although high-resolution US might improve detection of small epicholedochal lymph nodes, due to the limited depth of ultrasonic penetration, IDUS was inferior to conventional EUS with respect to detection of lymph node metastases^[110,117,118]. A hypo-echoic, clear margin, and round shaped lymph node was judged as malignant swelling. An irregular or angle shaped lymph node was judged as inflammatory swelling. Using these criteria, the accuracy of IDUS in assessing lymph node metastases was 75%-78%^[110,117,118,122]. As these results show, the assessment of lymph node metastases using CT and IDUS is difficult.

Distinction of T1 and T2 biliary tumors

The inside hypo-echoic layer on IDUS images corresponded not only to the fibromuscular layer but also to a part of the peri-muscular connective tissue. Therefore, even if the tumor was limited to the inside low-echoic layer, it suggests a T2 tumor (the tumor invaded the peri-muscular connective tissue) as well as a T1 tumor (the tumor which is confined to the fibromuscular layer). Therefore, accurate distinction of T1 and T2 tumors by IDUS as well as CT is difficult^[110,123].

Invasion of the serosa

When the outside hyper-echoic layer was interrupted, IDUS assessed it as positive serosal invasion. Using these criteria, the accuracy of IDUS in assessing tumor invasion to the serosa was 86%-93%^[109,110].

Invasion of the pancreatic parenchyma

Sonographic detection of a bile duct tumor protruding into the pancreatic parenchyma or disruption of the outer bile duct layer were diagnosed as positive for invasion of the pancreatic parenchyma. Using these criteria, the accuracy of IDUS in assessing tumor invasion to the pancreas was 93%-100%^[109,110,124].

ASSESSMENT OF LONGITUDINAL CANCER EXTENSION

Cholangiography

Extrahepatic bile duct carcinoma shows longitudinal spread along the bile duct, often resulting in residual tumor at the surgical margin. Conventional cholangiography can inadequately assess this as previously reported^[115-144].

Longitudinal extension of cholangiocarcinoma consists of mucosal (superficial) or submucosal (invasive) infiltration depending on the tumor growth pattern. Mucosal extension is predominantly seen with papillary (intraductal) and nodular (mass-forming) tumors, while submucosal extension is mainly seen with infiltrating (sclerosing) and nodular-infiltrating tumors^[125-128]. The length of longitudinal extension is determined by the type of invasion, with a mean length of 6-10 mm for the submucosal spread and 10-20 mm for the mucosal spread^[125-128]. Therefore, a gross surgical margin of more than 1 cm in the infiltrating type and more than 2 cm in the papillary and nodular types is recommended to achieve negative microscopic resection margins^[127,128].

Dynamic MRI

The addition of contrast-enhanced dynamic images to unenhanced and MRCP images did not significantly improve the diagnostic accuracy for assessment of the longitudinal extent of bile duct cancer^[133].

CT

MDCT correctly revealed longitudinal extension of hilar cholangiocarcinoma in 77.8%-87% of patients^[99,100,103,134],

and extrahepatic cholangiocarcinoma in 62.5%-78.6% of patients^[134,135]. MDCT revealed wall thickening of the bile duct accompanied by submucosal cancer extension, which is common in hilar cholangiocarcinoma^[99,100,103,134]. However, CT has a strong tendency to underestimate longitudinal mucosal spread, which is common in extrahepatic cholangiocarcinoma^[125-132,135]. In these patients, at the hepatic margin of the mucosal spread, the width of the mucosa is too thin to be demonstrated by CT or MRI^[133-135].

PTCS

Preoperative assessment of longitudinal spread of bile duct cancer has been conducted by mapping biopsy using PTCS^[39-42,44,45,47,110,136-138]. With the combination of PTCS and cholangiography, its accuracy improved to 80%-92%^[42,110,138]. Observation of the fine mucosal structure is essential to compensate for the false-negative study of mapping biopsy. Nodular, finely reticulo-granular and highly papillary forms of papillo-granular mucosa were characteristic of superficial spreading carcinoma^[39-42,44,45,47,136-138]. Regular papillo-granular mucosa was seen even in the non-cancerous area, and methylene blue stain was useful, since the mucosa that did not stain was characteristic of mucosal spread^[42,136]. The presence of irregularly dilated and tortuous vessels, so-called tumor vessels, and the patterns of luminal narrowing, suggested intramural cancer extension^[39-42,44-46,136-139]. Regular non-dilated vessels were seen even in the non-cancerous area^[39-42,44,45,136-138]. Lee *et al.*^[137] reported that PTCS was essential to evaluate longitudinal cancer extension in patients with polypoid-type cholangiocarcinoma, however, MRCP was sufficient for stenotic-type cholangiocarcinoma. Kim *et al.*^[138] reported the utility of the combination of PTCS and IDUS in evaluating longitudinal cancer extension of extrahepatic bile duct carcinoma. Since PTCS requires an invasive procedure and may lead to seeding along the PTCS tract, this information should be utilized by POCS from now on.

IDUS

The assessment of longitudinal cancer extension along the bile duct is a promising aspect of IDUS^[138-145]. However, to establish the diagnostic system of longitudinal spread by IDUS, some problems have been solved. Bile duct wall thickening occurs by inflammatory change due to mechanical stimulation of the drainage catheter as well as intra-wall extension of the cancer which shows asymmetric thickening, as previously reported^[140-144].

A possible solution to this problem might be accurate assessment of the appearance and the internal echo of the wall thickening. When IDUS shows a papillary pattern of the bile duct mucosal surface, heterogeneous bile duct wall thickening (width ≥ 1.8 mm) with irregular outer marginal, or asymmetric bile duct wall thickening (width ≥ 1.8 mm) with rigid inner edge, it may be judged as a sign of longitudinal spread of the cancer. However, asymmetric bile duct wall thickening without a rigid inner

Table 3 Intraductal ultrasonography for the evaluation of longitudinal cancer extension of extrahepatic bile duct carcinoma

Authors and year	Country	Route	Accuracy of IDUS
Tamada <i>et al</i> ^[110] , 1995	Japan	PTBD/ERCP	68% (13/19)
Inui <i>et al</i> ^[115] , 1998	Japan	PTBD/ERCP	85% (11/13)
Fujita <i>et al</i> ^[116] , 1998	Japan	ERCP	80% (12/15)
Menzel <i>et al</i> ^[118] , 2000	Germany	ERCP	80% (24/30)
Tamada <i>et al</i> ^[143] , 2001	Japan	PTBD/ERCP	71% (25/35)
Tamada <i>et al</i> ^[145] , 2001	Japan	ERCP	84% (16/19)
Kim <i>et al</i> ^[138] , 2010	Korea	PTBD	92% (18/19)

PTBD: Percutaneous transhepatic biliary drainage; ERCP: Endoscopic retrograde cholangiopancreatography.

edge without an irregular outer marginal border should be judged as a sign of inflammation^[143].

On IDUS findings, Inoue evaluated the asymmetry of the thickened bile duct wall by measuring the maximum thickening of the medial hypoechoic layer and the minimum thickening of this layer. The maximum/minimum thickening rate of the cancer spread site and the non-spread site were 2.7 (1.1-4.5) and 1.9 (1.3-3.3), respectively^[144].

Our research group has already reported that in patients who had not undergone biliary drainage, 95% did not show bile duct wall thickening over 1.8 mm at the common hepatic duct on IDUS images *via* the transpapillary route, when they did not have primary sclerosing cholangitis or longitudinal cancer extension along the bile duct^[139]. Once a biliary catheter was inserted, accuracy of IDUS in assessing longitudinal cancer extension was 71%-72%^[110,142,143].

Transpapillary IDUS prior to biliary drainage is useful to reduce artifacts associated with bile duct drainage tubes. When employing this technique any asymmetrically bile duct wall detected with IDUS was judged to be a phenomenon of longitudinal tumor spread allowing for an accuracy of 85%^[145]. In the remaining 15% of patients, at the border of the longitudinal cancer extension, the thickening of the mucosal spread was too thin to be visualized on IDUS. The results of IDUS in this area are listed in Table 3.

POCS

Itoi *et al*^[71] suggested that NBI cholangioscopy is expected to make it possible to detect not only polypoid lesions but also flat superficial cancerous lesions. They also suggested some limitations of this method. First, observation of the proximal portion of the biliary tumor was possible only in limited cases, since the cholangioscope could not easily be passed through. Secondly, submucosal cancerous progression with non-neoplastic bile-duct epithelium could not be identified even by NBI. These data suggest that POCS by using NBI is limited in cases that show surface structure changes at this stage. IDUS should be conducted to compensate for this limitation^[137,139]. Until now, only one report has described the

utility of POCS in evaluating the longitudinal cancer extension of extrahepatic bile duct carcinoma in contrast to PTCS (Table 4).

The development of a baby scope the size of “Spy-Glass” and with excellent image quality is warranted.

OCT

Since OCT has an axial resolution 10-fold better than that of high-frequency ultrasound, and its depth penetration is limited to approximately 1 mm *vs* 10 mm for a 20 MHz ultrasound probe^[90,91], this modality is expected to be utilized for the diagnosis of longitudinal cancer extension. Unfortunately, there is no previous report of OCT in this area.

CONCLUSION

When US shows dilatation of the bile duct, MRCP followed by EUS is the next step to diagnose bile duct carcinoma. When US or EUS shows localized bile duct wall thickening, ERCP should be conducted with IDUS and forceps biopsy (Figure 2). FISH increases the sensitivity of brush cytology with similar specificity. In patients with papillary (polypoid) type bile duct carcinoma, three biopsies are sufficient for the diagnosis. In patients with nodular-type bile duct carcinoma, multiple biopsies are warranted, and IDUS can compensate for the limitations of biopsies. In patients with pancreatic cancer, the sensitivities of forceps biopsy and brush cytology are low. In patients with hilar cholangiocarcinoma, dynamic MDCT provides excellent information for the detection of vascular invasion. In patients with extrahepatic bile duct carcinoma, the combination of MDCT and IDUS is useful to evaluate vascular invasion and cancer depth infiltration (Figure 3). However, assessment of lymph node metastases is difficult. In cholangiocarcinoma, assessment of longitudinal cancer spread is important. Its extension consists of mucosal (superficial) or submucosal (invasive) infiltration depending on the tumor growth pattern. Mucosal extension is predominantly seen with papillary and nodular tumors, while submucosal extension is mainly seen with infiltrating and nodular-infiltrating tumors. The length of longitudinal extension is determined by the type of invasion, with a mean length of 6-10 mm for submucosal spread and 10-20 mm for mucosal spread. The combination of IDUS and MDCT is useful for revealing submucosal cancer extension, which is common in hilar cholangiocarcinoma. To estimate mucosal extension, which is common in extrahepatic bile duct carcinoma, the combination of IDUS and cholangioscopy is required. The utility of current POCS is limited by the maneuverability of the “baby scope”. The new thin baby scope (10 Fr), called “SpyGlass”, has potential, if the image quality can be improved. In patients with unresectable cholangiocarcinoma, EUS-FNA is useful to compensate for the negative results of ERCP tissue sampling.

Since extrahepatic bile duct carcinoma is common in the Far East, many researchers (histopathologists, sur-

Table 4 Cholangioscopy for the evaluation of longitudinal cancer extension of extrahepatic bile duct carcinoma

Authors and year	Country	Modality	Accuracy
Tamada <i>et al</i> ^[110] , 1995	Japan	PTCS + mapping biopsy; PTCS + mapping biopsy + IDUS	80% (12/15); 93% (14/15)
Sato <i>et al</i> ^[42] , 1998	Japan	PTCS	81% (13/16)
Kawakami <i>et al</i> ^[72] , 2009	Japan	POCS; POCS + mapping biopsy	77% (10/13); 100% (13/13)
Kim <i>et al</i> ^[138] , 2010	Korea	PTCS + mapping biopsy; PTCS + mapping biopsy + IDUS	90% (18/20); 95% (18/19)

IDUS: Intraductal ultrasonography; PTCS: Percutaneous transhepatic cholangioscopy; POCS: Peroral cholangioscopy.

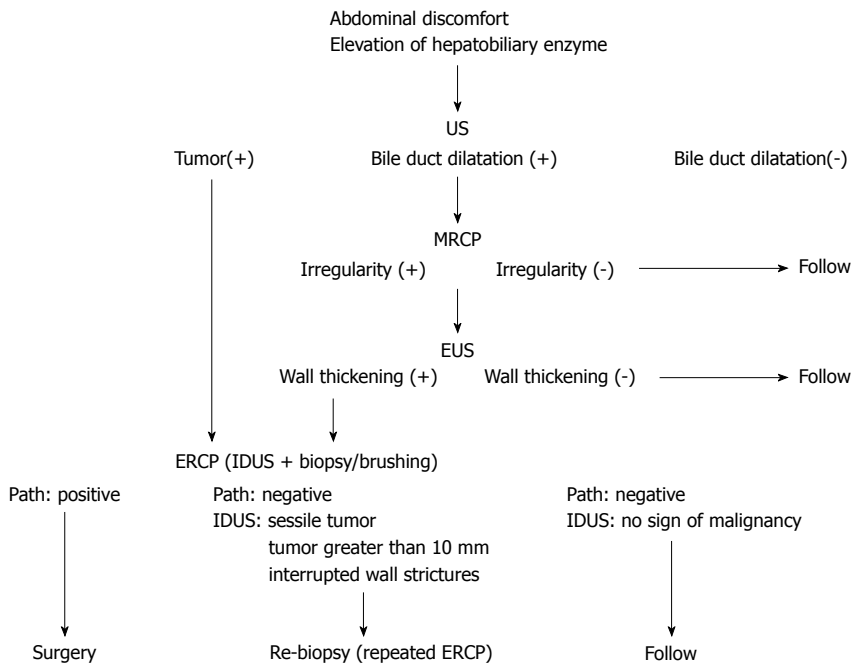


Figure 2 Diagnostic methods for extrahepatic bile duct carcinoma without jaundice. US: Ultrasonography; MRCP: Magnetic resonance cholangiopancreatography; EUS: Endoscopic ultrasonography; ERCP: Endoscopic retrograde cholangiopancreatography; IDUS: Intraductal ultrasonography.

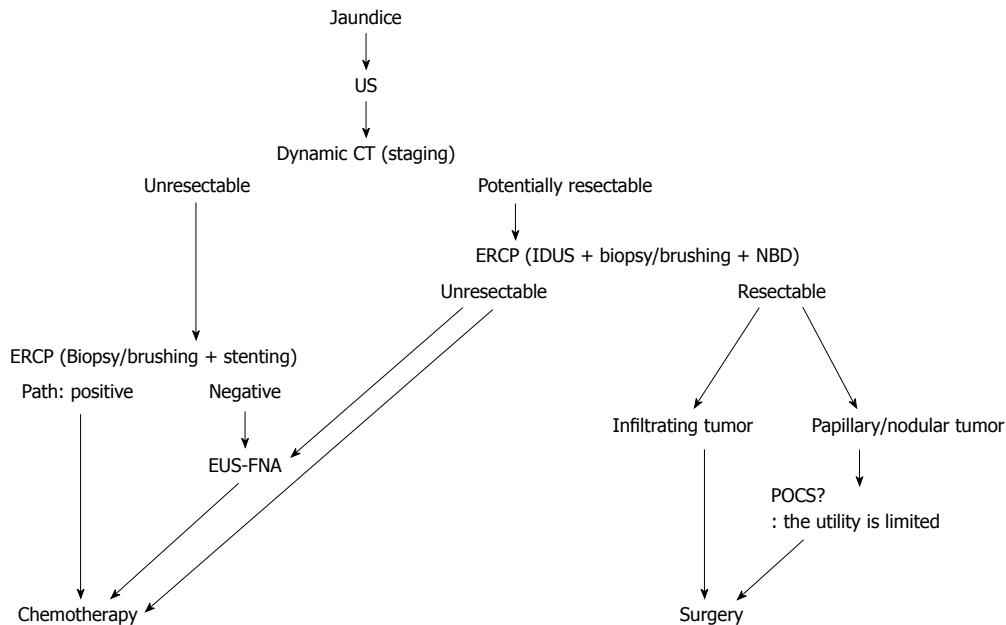


Figure 3 Diagnostic methods for extrahepatic bile duct carcinoma with jaundice. US: Ultrasonography; CT: Computed tomography; NBD: Naso-biliary drainage; EUS-FNA: Endoscopic ultrasonography-guided fine needle aspiration; ERCP: Endoscopic retrograde cholangiopancreatography; IDUS: Intraductal ultrasonography; POCS: Peroral cholangioscopy.

geons, radiologists, and endoscopists) in Japan and Korea contributed these studies, especially, the evaluation of longitudinal cancer extension, as shown in Table 3 and references.

REFERENCES

- 1 **Tompkins RK**, Thomas D, Wile A, Longmire WP. Prognostic factors in bile duct carcinoma: analysis of 96 cases. *Ann Surg* 1981; **194**: 447-457
- 2 **Tio TL**, Cheng J, Wijers OB, Sars PR, Tytgat GN. Endosonographic TNM staging of extrahepatic bile duct cancer: comparison with pathological staging. *Gastroenterology* 1991; **100**: 1351-1361
- 3 **Miyakawa S**, Ishihara S, Horiguchi A, Takada T, Miyazaki M, Nagakawa T. Biliary tract cancer treatment: 5,584 results from the Biliary Tract Cancer Statistics Registry from 1998 to 2004 in Japan. *J Hepatobiliary Pancreat Surg* 2009; **16**: 1-7
- 4 **Sugiyama M**, Atomi Y, Kuroda A, Muto T. Bile duct carcinoma without jaundice: clues to early diagnosis. *Hepatogastroenterology* 1997; **44**: 1477-1483
- 5 **Albu S**, Tantau M, Sparchez Z, Branda H, Suteu T, Badea R, Pascu O. Diagnosis and treatment of extrahepatic cholangiocarcinoma: results in a series of 124 patients. *Rom J Gastroenterol* 2005; **14**: 33-36
- 6 **Tamada K**, Yasuda Y, Tomiyama T, Oohashi A, Kanai N, Aizawa T, Wada S, Tano S, Miyata T, Satoh Y, Ido K, Kimura K. Preoperative assessment of congenital bile duct dilatation using intraductal US. *Gastrointest Endosc* 1999; **49**: 488-492
- 7 **Sai JK**, Suyama M, Kubokawa Y, Watanabe S, Maehara T. Early detection of extrahepatic bile-duct carcinomas in the nonicteric stage by using MRCP followed by EUS. *Gastrointest Endosc* 2009; **70**: 29-36
- 8 **Fernández-Esparrach G**, Ginès A, Sánchez M, Pagés M, Pellisé M, Fernández-Cruz L, López-Boado MA, Quintó L, Navarro S, Sendino O, Cárdenas A, Ayuso C, Bordas JM, Llach J, Castells A. Comparison of endoscopic ultrasonography and magnetic resonance cholangiopancreatography in the diagnosis of pancreatobiliary diseases: a prospective study. *Am J Gastroenterol* 2007; **102**: 1632-1639
- 9 **Malik S**, Kaushik N, Khalid A, Bauer K, Brody D, Slivka A, McGrath K. EUS yield in evaluating biliary dilatation in patients with normal serum liver enzymes. *Dig Dis Sci* 2007; **52**: 508-512
- 10 **Saifuku Y**, Yamagata M, Koike T, Hitomi G, Kanke K, Watanabe H, Murohisa T, Tamano M, Iijima M, Kubota K, Hiraishi H. Endoscopic ultrasonography can diagnose distal biliary strictures without a mass on computed tomography. *World J Gastroenterol* 2010; **16**: 237-244
- 11 **Iwaki K**, Shibata K, Ohta M, Endo Y, Uchida H, Tominaga M, Okunaga R, Kai S, Kitano S. Adenomyomatous hyperplasia of the common bile duct: report of a case. *Surg Today* 2008; **38**: 85-89
- 12 **Gamblin TC**, Krasinskas AM, Slivka AS, Tublin ME, Demetris J, Shue E, Caro S, Marsh JW, James Moser A. Fibroinflammatory biliary stricture: a rare bile duct lesion masquerading as cholangiocarcinoma. *J Gastrointest Surg* 2009; **13**: 713-721
- 13 **Park MS**, Kim TK, Kim KW, Park SW, Lee JK, Kim JS, Lee JH, Kim KA, Kim AY, Kim PN, Lee MG, Ha HK. Differentiation of extrahepatic bile duct cholangiocarcinoma from benign stricture: findings at MRCP versus ERCP. *Radiology* 2004; **233**: 234-240
- 14 **Ferrero A**, Lo Tesoriere R, Viganò L, Caggiano L, Sgotto E, Capussotti L. Preoperative biliary drainage increases infectious complications after hepatectomy for proximal bile duct tumor obstruction. *World J Surg* 2009; **33**: 318-325
- 15 **Maguchi H**, Takahashi K, Katanuma A, Osanai M, Nakahara K, Matuzaki S, Urata T, Iwano H. Preoperative biliary drainage for hilar cholangiocarcinoma. *J Hepatobiliary Pancreat Surg* 2007; **14**: 441-446
- 16 **Ohashi A**, Sato K, Seki H, Kano T, Tamada K, Wada S, Sugiyama S, Ichiyama M, Tomiyama T, Nishizono T. Diagnosis of biliary diseases via a naso-biliary catheter. *Endoscopy* 1991; **23**: 79-82
- 17 **Arakura N**, Takayama M, Ozaki Y, Maruyama M, Chou Y, Kodama R, Ochi Y, Hamano H, Nakata T, Kajikawa S, Tanaka E, Kawa S. Efficacy of preoperative endoscopic naso-biliary drainage for hilar cholangiocarcinoma. *J Hepatobiliary Pancreat Surg* 2009; **16**: 473-477
- 18 **van der Gaag NA**, Rauws EA, van Eijck CH, Bruno MJ, van der Harst E, Kubben FJ, Gerritsen JJ, Greve JW, Gerhards MF, de Hingh IH, Klinkenbijl JH, Nio CY, de Castro SM, Busch OR, van Gulik TM, Bossuyt PM, Gouma DJ. Preoperative biliary drainage for cancer of the head of the pancreas. *N Engl J Med* 2010; **362**: 129-137
- 19 **Desa LA**, Akosa AB, Lazzara S, Domizio P, Krausz T, Benjamin IS. Cytodiagnosis in the management of extrahepatic biliary stricture. *Gut* 1991; **32**: 1188-1191
- 20 **Kurzawinski T**, Deery A, Dooley J, Dick R, Hobbs K, Davidson B. A prospective controlled study comparing brush and bile exfoliative cytology for diagnosing bile duct strictures. *Gut* 1992; **33**: 1675-1677
- 21 **Venu RP**, Geenen JE, Kini M, Hogan WJ, Payne M, Johnson GK, Schmalz MJ. Endoscopic retrograde brush cytology. A new technique. *Gastroenterology* 1990; **99**: 1475-1479
- 22 **Rupp M**, Hawthorne CM, Ehya H. Brushing cytology in biliary tract obstruction. *Acta Cytol* 1990; **34**: 221-226
- 23 **Foutch PG**, Kerr DM, Harlan JR, Kummet TD. A prospective, controlled analysis of endoscopic cytotechniques for diagnosis of malignant biliary strictures. *Am J Gastroenterol* 1991; **86**: 577-580
- 24 **Ryan ME**. Cytologic brushings of ductal lesions during ERCP. *Gastrointest Endosc* 1991; **37**: 139-142
- 25 **Howell DA**, Beveridge RP, Bosco J, Jones M. Endoscopic needle aspiration biopsy at ERCP in the diagnosis of biliary strictures. *Gastrointest Endosc* 1992; **38**: 531-535
- 26 **Kurzawinski TR**, Deery A, Dooley JS, Dick R, Hobbs KE, Davidson BR. A prospective study of biliary cytology in 100 patients with bile duct strictures. *Hepatology* 1993; **18**: 1399-1403
- 27 **Ferrari Júnior AP**, Lichtenstein DR, Slivka A, Chang C, Carr-Locke DL. Brush cytology during ERCP for the diagnosis of biliary and pancreatic malignancies. *Gastrointest Endosc* 1994; **40**: 140-145
- 28 **Ponchon T**, Gagnon P, Berger F, Labadie M, Liaras A, Chavaillon A, Bory R. Value of endobiliary brush cytology and biopsies for the diagnosis of malignant bile duct stenosis: results of a prospective study. *Gastrointest Endosc* 1995; **42**: 565-572
- 29 **Sugiyama M**, Atomi Y, Wada N, Kuroda A, Muto T. Endoscopic transpapillary bile duct biopsy without sphincterotomy for diagnosing biliary strictures: a prospective comparative study with bile and brush cytology. *Am J Gastroenterol* 1996; **91**: 465-467
- 30 **Mansfield JC**, Griffin SM, Wadehra V, Matthewson K. A prospective evaluation of cytology from biliary strictures. *Gut* 1997; **40**: 671-677
- 31 **Vandervoort J**, Soetikno RM, Montes H, Lichtenstein DR, Van Dam J, Ruymann FW, Cibas ES, Carr-Locke DL. Accuracy and complication rate of brush cytology from bile duct versus pancreatic duct. *Gastrointest Endosc* 1999; **49**: 322-327
- 32 **Glasbrenner B**, Ardan M, Boeck W, Preclik G, Möller P, Adler G. Prospective evaluation of brush cytology of biliary strictures during endoscopic retrograde cholangiopancreatography. *Endoscopy* 1999; **31**: 712-717
- 33 **Jailwala J**, Fogel EL, Sherman S, Gottlieb K, Flueckiger J, Bucksot LG, Lehman GA. Triple-tissue sampling at ERCP in malignant biliary obstruction. *Gastrointest Endosc* 2000; **51**: 383-390

- 34 **Farrell RJ**, Jain AK, Brandwein SL, Wang H, Chuttani R, Pleskow DK. The combination of stricture dilation, endoscopic needle aspiration, and biliary brushings significantly improves diagnostic yield from malignant bile duct strictures. *Gastrointest Endosc* 2001; **54**: 587-594
- 35 **Fogel EL**, deBellis M, McHenry L, Watkins JL, Chappo J, Cramer H, Schmidt S, Lazzell-Pannell L, Sherman S, Lehman GA. Effectiveness of a new long cytology brush in the evaluation of malignant biliary obstruction: a prospective study. *Gastrointest Endosc* 2006; **63**: 71-77
- 36 **Kitajima Y**, Ohara H, Nakazawa T, Ando T, Hayashi K, Takada H, Tanaka H, Ogawa K, Sano H, Togawa S, Naito I, Hirai M, Ueno K, Ban T, Miyabe K, Yamashita H, Yoshimura N, Akita S, Gotoh K, Joh T. Usefulness of transpapillary bile duct brushing cytology and forceps biopsy for improved diagnosis in patients with biliary strictures. *J Gastroenterol Hepatol* 2007; **22**: 1615-1620
- 37 **Harewood GC**, Baron TH, Stadheim LM, Kipp BR, Sebo TJ, Salomao DR. Prospective, blinded assessment of factors influencing the accuracy of biliary cytology interpretation. *Am J Gastroenterol* 2004; **99**: 1464-1469
- 38 **de Bellis M**, Fogel EL, Sherman S, Watkins JL, Chappo J, Younger C, Cramer H, Lehman GA. Influence of stricture dilation and repeat brushing on the cancer detection rate of brush cytology in the evaluation of malignant biliary obstruction. *Gastrointest Endosc* 2003; **58**: 176-182
- 39 **Nimura Y**. Staging of biliary carcinoma: cholangiography and cholangioscopy. *Endoscopy* 1993; **25**: 76-80
- 40 **Sato M**, Maetani I, Ohashi S, Ogawa S, Anzai T, Hoshi H, Yoshioka H, Igarashi Y, Sakai Y. Relationship between percutaneous transhepatic cholangioscopy findings and pattern of carcinomatous spread in the bile duct. *Diagn Ther Endosc* 1994; **1**: 45-50
- 41 **Nimura Y**, Kamiya J. Cholangioscopy. *Endoscopy* 1998; **30**: 182-188
- 42 **Sato M**, Inoue H, Ogawa S, Ohashi S, Maetani I, Igarashi Y, Sakai Y. Limitations of percutaneous transhepatic cholangioscopy for the diagnosis of the intramural extension of bile duct carcinoma. *Endoscopy* 1998; **30**: 281-288
- 43 **Hwang MH**, Tsai CC, Chou CY, Mo LR, Yang CT, Lin RC, Yueh SK. Percutaneous cholangiofiberscopic endoluminal forceps biopsy of intrabiliary duct diseases. *Hepatogastroenterology* 1998; **45**: 2073-2078
- 44 **Tamada K**, Ueno N, Tomiyama T, Ohashi A, Wada S, Nishizono T, Tano S, Aizawa T, Ido K, Kimura K. Characterization of biliary strictures using intraductal ultrasonography: comparison with percutaneous cholangioscopic biopsy. *Gastrointest Endosc* 1998; **47**: 341-349
- 45 **Tamada K**, Kurihara K, Tomiyama T, Ohashi A, Wada S, Satoh Y, Miyata T, Ido K, Sugano K. How many biopsies should be performed during percutaneous transhepatic cholangioscopy to diagnose biliary tract cancer? *Gastrointest Endosc* 1999; **50**: 653-658
- 46 **Kim HJ**, Kim MH, Lee SK, Yoo KS, Seo DW, Min YI. Tumor vessel: a valuable cholangioscopic clue of malignant biliary stricture. *Gastrointest Endosc* 2000; **52**: 635-638
- 47 **Shim CS**, Neuhaus H, Tamada K. Direct cholangioscopy. *Endoscopy* 2003; **35**: 752-758
- 48 **Jung JY**, Lee SK, Oh HC, Lee TY, Kwon SH, Lee SS, Seo DW, Kim MH. The role of percutaneous transhepatic cholangioscopy in patients with hilar strictures. *Gut Liver* 2007; **1**: 56-62
- 49 **Oh HC**, Lee SK, Lee TY, Kwon S, Lee SS, Seo DW, Kim MH. Analysis of percutaneous transhepatic cholangioscopy-related complications and the risk factors for those complications. *Endoscopy* 2007; **39**: 731-736
- 50 **Kim EH**, Kim HJ, Oh HC, Lee KH, Jung JY, Kim S, Lee SS, Seo DW, Kim MH, Lee SK. The usefulness of percutaneous transhepatic cholangioscopy for identifying malignancies in distal common [corrected] bile duct strictures. *J Korean Med Sci* 2008; **23**: 579-585
- 51 **Tamada K**, Ohashi A, Tomiyama T, Miyata T, Wada S, Satoh Y, Ido K, Sugano K. Double-catheter method to prevent dislodgement during percutaneous transhepatic cholangioscopy. *Gastrointest Endosc* 2000; **52**: 246-250
- 52 **Tamada K**, Tomiyama T, Ohashi A, Wada S, Miyata T, Satoh Y, Higashizawa T, Gotoh Y, Ido K, Sugano K. Access for percutaneous transhepatic cholangioscopy in patients with nondilated bile ducts using nasobiliary catheter cholangiography and oblique fluoroscopy. *Gastrointest Endosc* 2000; **52**: 765-769
- 53 **Tamada K**, Tomiyama T, Wada S, Ohashi A, Satoh Y, Higashizawa T, Miyata T, Ido K, Sugano K. Catheter dislodgement of percutaneous transhepatic biliary drainage: identification of role of puncture sites and catheter sheath. *Abdom Imaging* 2000; **25**: 587-591
- 54 **Kubota Y**, Takaoka M, Tani K, Ogura M, Kin H, Fujimura K, Mizuno T, Inoue K. Endoscopic transpapillary biopsy for diagnosis of patients with pancreaticobiliary ductal strictures. *Am J Gastroenterol* 1993; **88**: 1700-1704
- 55 **Howell DA**, Parsons WG, Jones MA, Bosco JJ, Hanson BL. Complete tissue sampling of biliary strictures at ERCP using a new device. *Gastrointest Endosc* 1996; **43**: 498-502
- 56 **Higashizawa T**, Tamada K, Tomiyama T, Wada S, Ohashi A, Satoh Y, Gotoh Y, Miyata T, Ido K, Sugano K. Biliary guidewire facilitates bile duct biopsy and endoscopic drainage. *J Gastroenterol Hepatol* 2002; **17**: 332-336
- 57 **Tamada K**, Higashizawa T, Tomiyama T, Wada S, Ohashi A, Satoh Y, Ido K, Sugano K. Ropeway-type bile duct biopsy forceps with a side slit for a guidewire. *Gastrointest Endosc* 2001; **53**: 89-92
- 58 **Higashizawa T**, Tamada K, Tomiyama T, Wada S, Ohashi A, Satoh Y, Gotoh Y, Ido K, Sugano K. Looping technique for transpapillary selective biopsy of the left hepatic duct. *J Gastroenterol* 2001; **36**: 492-494
- 59 **Tamada K**, Tomiyama T, Wada S, Ohashi A, Satoh Y, Ido K, Sugano K. Endoscopic transpapillary bile duct biopsy with the combination of intraductal ultrasonography in the diagnosis of biliary strictures. *Gut* 2002; **50**: 326-331
- 60 **Domagk D**, Poremba C, Dietl KH, Senninger N, Heinecke A, Domschke W, Menzel J. Endoscopic transpapillary biopsies and intraductal ultrasonography in the diagnostics of bile duct strictures: a prospective study. *Gut* 2002; **51**: 240-244
- 61 **Weber A**, von Weyhern C, Fend F, Schneider J, Neu B, Meining A, Weidenbach H, Schmid RM, Prinz C. Endoscopic transpapillary brush cytology and forceps biopsy in patients with hilar cholangiocarcinoma. *World J Gastroenterol* 2008; **14**: 1097-1101
- 62 **Dumonceau JM**, Macias Gomez C, Casco C, Genevay M, Marcolongo M, Bongiovanni M, Morel P, Majno P, Hadengue A. Grasp or brush for biliary sampling at endoscopic retrograde cholangiography? A blinded randomized controlled trial. *Am J Gastroenterol* 2008; **103**: 333-340
- 63 **Tamada K**, Satoh Y, Tomiyama T, Ohashi A, Wada S, Ido K, Sugano K. Multiple bile duct biopsies using a sheath with a side port: usefulness of intraductal sonography. *AJR Am J Roentgenol* 2001; **176**: 797-802
- 64 **Moreno Luna LE**, Kipp B, Halling KC, Sebo TJ, Kremers WK, Roberts LR, Barr Fritcher EG, Levy MJ, Gores GJ. Advanced cytologic techniques for the detection of malignant pancreaticobiliary strictures. *Gastroenterology* 2006; **131**: 1064-1072
- 65 **Barr Fritcher EG**, Kipp BR, Slezak JM, Moreno-Luna LE, Gores GJ, Levy MJ, Roberts LR, Halling KC, Sebo TJ. Correlating routine cytology, quantitative nuclear morphometry by digital image analysis, and genetic alterations by fluorescence in situ hybridization to assess the sensitivity of cytology for detecting pancreaticobiliary tract malignancy. *Am J Clin Pathol* 2007; **128**: 272-279
- 66 **Levy MJ**, Baron TH, Clayton AC, Enders FB, Gostout CJ, Halling KC, Kipp BR, Petersen BT, Roberts LR, Rumalla A, Sebo TJ, Topazian MD, Wiersma MJ, Gores GJ. Prospective

- evaluation of advanced molecular markers and imaging techniques in patients with indeterminate bile duct strictures. *Am J Gastroenterol* 2008; **103**: 1263-1273
- 67 **Fritcher EG**, Kipp BR, Halling KC, Oberg TN, Bryant SC, Tarrell RF, Gores GJ, Levy MJ, Clayton AC, Sebo TJ, Roberts LR. A multivariable model using advanced cytologic methods for the evaluation of indeterminate pancreatobiliary strictures. *Gastroenterology* 2009; **136**: 2180-2186
- 68 **Fukuda Y**, Tsuyuguchi T, Sakai Y, Tsuchiya S, Saisyo H. Diagnostic utility of peroral cholangioscopy for various bile-duct lesions. *Gastrointest Endosc* 2005; **62**: 374-382
- 69 **Shah RJ**, Langer DA, Antillon MR, Chen YK. Cholangioscopy and cholangioscopic forceps biopsy in patients with indeterminate pancreatobiliary pathology. *Clin Gastroenterol Hepatol* 2006; **4**: 219-225
- 70 **Tsuyuguchi T**, Fukuda Y, Saisho H. Peroral cholangioscopy for the diagnosis and treatment of biliary diseases. *J Hepatobiliary Pancreat Surg* 2006; **13**: 94-99
- 71 **Itoi T**, Sofuni A, Itokawa F, Tsuchiya T, Kurihara T, Ishii K, Tsuji S, Moriyasu F, Gotoda T. Peroral cholangioscopic diagnosis of biliary-tract diseases by using narrow-band imaging (with videos). *Gastrointest Endosc* 2007; **66**: 730-736
- 72 **Kawakami H**, Kuwatani M, Etoh K, Haba S, Yamato H, Shinada K, Nakanishi Y, Tanaka E, Hirano S, Kondo S, Kubota K, Asaka M. Endoscopic retrograde cholangiography versus peroral cholangioscopy to evaluate intraepithelial tumor spread in biliary cancer. *Endoscopy* 2009; **41**: 959-964
- 73 **Igarashi Y**, Okano N, Ito K, Suzuki T, Mimura T. Effectiveness of peroral cholangioscopy and narrow band imaging for endoscopically diagnosing the bile duct cancer. *Dig Endosc* 2009; **21 Suppl 1**: S101-S102
- 74 **Tanaka K**, Kida M. Role of endoscopy in screening of early pancreatic cancer and bile duct cancer. *Dig Endosc* 2009; **21 Suppl 1**: S97-S100
- 75 **Ueki T**, Mizuno M, Ota S, Ogawa T, Matsushita H, Uchida D, Numata N, Ueda A, Morimoto Y, Kominami Y, Nanba S, Kurome M, Ohe H, Nakagawa M, Araki Y. Carbon dioxide insufflation is useful for obtaining clear images of the bile duct during peroral cholangioscopy (with video). *Gastrointest Endosc* 2010; **71**: 1046-1051
- 76 **Urakami Y**, Seifert E, Butke H. Peroral direct cholangioscopy (PDCS) using routine straight-view endoscope: first report. *Endoscopy* 1977; **9**: 27-30
- 77 **Kimura K**, Sakai H, Yoshida Y, Ido K, Seki H. Development of a new peroral cholangioscope (FDS-CP). *Am J Gastroenterol* 1982; **77**: 580-584
- 78 **Moon JH**, Ko BM, Choi HJ, Hong SJ, Cheon YK, Cho YD, Lee JS, Lee MS, Shim CS. Intraductal balloon-guided direct peroral cholangioscopy with an ultraslim upper endoscope (with videos). *Gastrointest Endosc* 2009; **70**: 297-302
- 79 **Choi HJ**, Moon JH, Ko BM, Hong SJ, Koo HC, Cheon YK, Cho YD, Lee JS, Lee MS, Shim CS. Overtube-balloon-assisted direct peroral cholangioscopy by using an ultra-slim upper endoscope (with videos). *Gastrointest Endosc* 2009; **69**: 935-940
- 80 **Larghi A**, Waxman I. Endoscopic direct cholangioscopy by using an ultra-slim upper endoscope: a feasibility study. *Gastrointest Endosc* 2006; **63**: 853-857
- 81 **Brauer BC**, Fukami N, Chen YK. Direct cholangioscopy with narrow-band imaging, chromoendoscopy, and argon plasma coagulation of intraductal papillary mucinous neoplasm of the bile duct (with videos). *Gastrointest Endosc* 2008; **67**: 574-576
- 82 **Farrell JJ**, Bounds BC, Al-Shalabi S, Jacobson BC, Brugge WR, Schapiro RH, Kelsey PB. Single-operator duodenoscopy-assisted cholangioscopy is an effective alternative in the management of choledocholithiasis not removed by conventional methods, including mechanical lithotripsy. *Endoscopy* 2005; **37**: 542-547
- 83 **Chen YK**. Preclinical characterization of the Spyglass peroral cholangiopancreatography system for direct access, visualization, and biopsy. *Gastrointest Endosc* 2007; **65**: 303-311
- 84 **Chen YK**, Pleskow DK. SpyGlass single-operator peroral cholangiopancreatography system for the diagnosis and therapy of bile-duct disorders: a clinical feasibility study (with video). *Gastrointest Endosc* 2007; **65**: 832-841
- 85 **Farrell RJ**, Agarwal B, Brandwein SL, Underhill J, Chuttani R, Pleskow DK. Intraductal US is a useful adjunct to ERCP for distinguishing malignant from benign biliary strictures. *Gastrointest Endosc* 2002; **56**: 681-687
- 86 **Domagk D**, Wessling J, Reimer P, Hertel L, Poremba C, Senninger N, Heinecke A, Domschke W, Menzel J. Endoscopic retrograde cholangiopancreatography, intraductal ultrasonography, and magnetic resonance cholangiopancreatography in bile duct strictures: a prospective comparison of imaging diagnostics with histopathological correlation. *Am J Gastroenterol* 2004; **99**: 1684-1689
- 87 **Stavropoulos S**, Larghi A, Verna E, Battezzati P, Stevens P. Intraductal ultrasound for the evaluation of patients with biliary strictures and no abdominal mass on computed tomography. *Endoscopy* 2005; **37**: 715-721
- 88 **Krishna NB**, Saripalli S, Safdar R, Agarwal B. Intraductal US in evaluation of biliary strictures without a mass lesion on CT scan or magnetic resonance imaging: significance of focal wall thickening and extrinsic compression at the stricture site. *Gastrointest Endosc* 2007; **66**: 90-96
- 89 **Varadarajulu S**, Eloubeidi MA, Wilcox CM. Prospective evaluation of indeterminate ERCP findings by intraductal ultrasound. *J Gastroenterol Hepatol* 2007; **22**: 2086-2092
- 90 **Testoni PA**, Mangiavillano B. Optical coherence tomography in detection of dysplasia and cancer of the gastrointestinal tract and bilio-pancreatic ductal system. *World J Gastroenterol* 2008; **14**: 6444-6452
- 91 **Arvanitakis M**, Hookey L, Tessier G, Demetter P, Nagy N, Stellek A, De Maertelaer V, Devière J, Le Moine O. Intraductal optical coherence tomography during endoscopic retrograde cholangiopancreatography for investigation of biliary strictures. *Endoscopy* 2009; **41**: 696-701
- 92 **Chen HY**, Lee CH, Hsieh CH. Bile peritonitis after EUS-guided fine-needle aspiration. *Gastrointest Endosc* 2002; **56**: 594-596
- 93 **Rösch T**, Hofrichter K, Frimberger E, Meining A, Born P, Weigert N, Allescher HD, Classen M, Barbur M, Schenck U, Werner M. ERCP or EUS for tissue diagnosis of biliary strictures? A prospective comparative study. *Gastrointest Endosc* 2004; **60**: 390-396
- 94 **Fritscher-Ravens A**, Broering DC, Knoefel WT, Rogiers X, Swain P, Thonke F, Bobrowski C, Topalidis T, Soehendra N. EUS-guided fine-needle aspiration of suspected hilar cholangiocarcinoma in potentially operable patients with negative brush cytology. *Am J Gastroenterol* 2004; **99**: 45-51
- 95 **Pavey DA**, Gress FG. The role of EUS-guided FNA for the evaluation of biliary strictures. *Gastrointest Endosc* 2006; **64**: 334-337
- 96 **DeWitt J**, Misra VL, Leblanc JK, McHenry L, Sherman S. EUS-guided FNA of proximal biliary strictures after negative ERCP brush cytology results. *Gastrointest Endosc* 2006; **64**: 325-333
- 97 **Pollack MJ**, Gholam PM, Chak A. EUS-FNA in unresectable cholangiocarcinoma: a novel indication. *Gastrointest Endosc* 2008; **67**: 444-445
- 98 **Gleeson FC**, Rajan E, Levy MJ, Clain JE, Topazian MD, Harewood GC, Papachristou GI, Takahashi N, Rosen CB, Gores GJ. EUS-guided FNA of regional lymph nodes in patients with unresectable hilar cholangiocarcinoma. *Gastrointest Endosc* 2008; **67**: 438-443
- 99 **Unno M**, Okumoto T, Katayose Y, Rikiyama T, Sato A, Motoi F, Oikawa M, Egawa S, Ishibashi T. Preoperative assessment of hilar cholangiocarcinoma by multidetector row computed tomography. *J Hepatobiliary Pancreat Surg* 2007; **14**: 434-440

- 100 **Endo I**, Shimada H, Sugita M, Fujii Y, Morioka D, Takeda K, Sugae S, Tanaka K, Togo S, Bourquain H, Peitgen HO. Role of three-dimensional imaging in operative planning for hilar cholangiocarcinoma. *Surgery* 2007; **142**: 666-675
- 101 **Choi JY**, Lee JM, Lee JY, Kim SH, Lee MW, Han JK, Choi BI. Assessment of hilar and extrahepatic bile duct cancer using multidetector CT: value of adding multiplanar reformations to standard axial images. *Eur Radiol* 2007; **17**: 3130-3138
- 102 **Choi JY**, Kim MJ, Lee JM, Kim KW, Lee JY, Han JK, Choi BI. Hilar cholangiocarcinoma: role of preoperative imaging with sonography, MDCT, MRI, and direct cholangiography. *AJR Am J Roentgenol* 2008; **191**: 1448-1457
- 103 **Okumoto T**, Sato A, Yamada T, Takase K, Matsuhashi T, Tsuda M, Seiji K, Ishibashi T, Higano S, Katayose Y, Unno M, Takahashi S. Correct diagnosis of vascular encasement and longitudinal extension of hilar cholangiocarcinoma by four-channel multidetector-row computed tomography. *Tohoku J Exp Med* 2009; **217**: 1-8
- 104 **Chen HW**, Lai EC, Pan AZ, Chen T, Liao S, Lau WY. Preoperative assessment and staging of hilar cholangiocarcinoma with 16-multidetector computed tomography cholangiography and angiography. *Hepatogastroenterology* 2009; **56**: 578-583
- 105 **Park HS**, Lee JM, Choi JY, Lee MW, Kim HJ, Han JK, Choi BI. Preoperative evaluation of bile duct cancer: MRI combined with MR cholangiopancreatography versus MDCT with direct cholangiography. *AJR Am J Roentgenol* 2008; **190**: 396-405
- 106 **Yin LL**, Song B, Xu J, Li YC. Hilar cholangiocarcinoma: preoperative evaluation with a three dimensional volumetric interpolated breath-hold examination magnetic resonance imaging sequence. *Chin Med J (Engl)* 2007; **120**: 636-642
- 107 **Masselli G**, Manfredi R, Vecchioli A, Gualdi G. MR imaging and MR cholangiopancreatography in the preoperative evaluation of hilar cholangiocarcinoma: correlation with surgical and pathologic findings. *Eur Radiol* 2008; **18**: 2213-2221
- 108 **Park MS**, Lee DK, Kim MJ, Lee WJ, Yoon DS, Lee SJ, Lim JS, Yu JS, Cho JY, Kim KW. Preoperative staging accuracy of multidetector row computed tomography for extrahepatic bile duct carcinoma. *J Comput Assist Tomogr* 2006; **30**: 362-367
- 109 **Kuroiwa M**, Tsukamoto Y, Naitoh Y, Hirooka Y, Furukawa T, Katou T. New technique using intraductal ultrasonography for the diagnosis of bile duct cancer. *J Ultrasound Med* 1994; **13**: 189-195
- 110 **Tamada K**, Ido K, Ueno N, Kimura K, Ichiyama M, Tomiyama T. Preoperative staging of extrahepatic bile duct cancer with intraductal ultrasonography. *Am J Gastroenterol* 1995; **90**: 239-246
- 111 **Tamada K**, Ido K, Ueno N, Ichiyama M, Tomiyama T, Nishizono T, Wada S, Noda T, Tano S, Aizawa T. Assessment of portal vein invasion by bile duct cancer using intraductal ultrasonography. *Endoscopy* 1995; **27**: 573-578
- 112 **Tamada K**, Ido K, Ueno N, Ichiyama M, Tomiyama T, Nishizono T, Wada S, Noda T, Tano S, Aizawa T. Assessment of hepatic artery invasion by bile duct cancer using intraductal ultrasonography. *Endoscopy* 1995; **27**: 579-583
- 113 **Tamada K**, Ido K, Ueno N, Ichiyama M, Tomiyama T, Nishizono T, Wada S, Tano S, Aizawa T, Kimura K. Assessment of the course and variations of the hepatic artery in bile duct cancer by intraductal ultrasonography. *Gastrointest Endosc* 1996; **44**: 249-256
- 114 **Kanemaki N**, Nakazawa S, Inui K, Yoshino J, Yamao J, Okushima K. Three-dimensional intraductal ultrasonography: preliminary results of a new technique for the diagnosis of diseases of the pancreatobiliary system. *Endoscopy* 1997; **29**: 726-731
- 115 **Inui K**, Nakazawa S, Yoshino J, Wakabayashi T, Okushima K, Nakamura Y, Hattori T, Miyoshi H. Ultrasound probes for biliary lesions. *Endoscopy* 1998; **30 Suppl 1**: A120-A123
- 116 **Fujita N**, Noda Y, Kobayashi G, Kimura K, Yago A. Staging of bile duct carcinoma by EUS and IDUS. *Endoscopy* 1998; **30 Suppl 1**: A132-A134
- 117 **Tamada K**, Tomiyama T, Ohashi A, Wada S, Satoh Y, Miyata T, Ido K, Sugano K. Preoperative assessment of extrahepatic bile duct carcinoma using three-dimensional intraductal US. *Gastrointest Endosc* 1999; **50**: 548-554
- 118 **Menzel J**, Poremba C, Dietl KH, Domschke W. Preoperative diagnosis of bile duct strictures--comparison of intraductal ultrasonography with conventional endosonography. *Scand J Gastroenterol* 2000; **35**: 77-82
- 119 **Kim YC**, Park MS, Cha SW, Chung YE, Lim JS, Kim KS, Kim MJ, Kim KW. Comparison of CT and MRI for presurgical characterization of paraaortic lymph nodes in patients with pancreatico-biliary carcinoma. *World J Gastroenterol* 2008; **14**: 2208-2212
- 120 **Noji T**, Kondo S, Hirano S, Tanaka E, Suzuki O, Shichinohe T. Computed tomography evaluation of regional lymph node metastases in patients with biliary cancer. *Br J Surg* 2008; **95**: 92-96
- 121 **Furukawa H**, Ikuma H, Asakura-Yokoe K, Uesaka K. Preoperative staging of biliary carcinoma using 18F-fluorodeoxyglucose PET: prospective comparison with PET+CT, MDCT and histopathology. *Eur Radiol* 2008; **18**: 2841-2847
- 122 **Duda SH**, Huppert PE, Schott U, Brambs HJ, Claussen CD. Percutaneous transhepatic intraductal biliary sonography for lymph node staging at 12.5 MHz in malignant bile duct obstruction: work in progress. *Cardiovasc Intervent Radiol* 1997; **20**: 133-138
- 123 **Tamada K**, Kanai N, Ueno N, Ichiyama M, Tomiyama T, Wada S, Oohashi A, Nishizono T, Tano S, Aizawa T, Ido K, Kimura K. Limitations of intraductal ultrasonography in differentiating between bile duct cancer in stage T1 and stage T2: in-vitro and in-vivo studies. *Endoscopy* 1997; **29**: 721-725
- 124 **Tamada K**, Ueno N, Ichiyama M, Tomiyama T, Nishizono T, Wada S, Oohashi A, Tano S, Aizawa T, Ido K, Kimura K. Assessment of pancreatic parenchymal invasion by bile duct cancer using intraductal ultrasonography. *Endoscopy* 1996; **28**: 492-496
- 125 **Hayashi S**, Miyazaki M, Kondo Y, Nakajima N. Invasive growth patterns of hepatic hilar ductal carcinoma. A histologic analysis of 18 surgical cases. *Cancer* 1994; **73**: 2922-2929
- 126 **Yamaguchi K**, Chijiwa K, Saiki S, Shimizu S, Takashima M, Tanaka M. Carcinoma of the extrahepatic bile duct: mode of spread and its prognostic implications. *Hepatogastroenterology* 1997; **44**: 1256-1261
- 127 **Sakamoto E**, Nimura Y, Hayakawa N, Kamiya J, Kondo S, Nagino M, Kanai M, Miyachi M, Uesaka K. The pattern of infiltration at the proximal border of hilar bile duct carcinoma: a histologic analysis of 62 resected cases. *Ann Surg* 1998; **227**: 405-411
- 128 **Ebata T**, Watanabe H, Ajioka Y, Oda K, Nimura Y. Pathological appraisal of lines of resection for bile duct carcinoma. *Br J Surg* 2002; **89**: 1260-1267
- 129 **Sasaki R**, Takeda Y, Funato O, Nitta H, Kawamura H, Uesugi N, Sugai T, Wakabayashi G, Ohkohchi N. Significance of ductal margin status in patients undergoing surgical resection for extrahepatic cholangiocarcinoma. *World J Surg* 2007; **31**: 1788-1796
- 130 **Ojima H**, Kanai Y, Iwasaki M, Hiraoka N, Shimada K, Sano T, Sakamoto Y, Esaki M, Kosuge T, Sakamoto M, Hirohashi S. Intraductal carcinoma component as a favorable prognostic factor in biliary tract carcinoma. *Cancer Sci* 2009; **100**: 62-70
- 131 **Igami T**, Nagino M, Oda K, Nishio H, Ebata T, Yokoyama Y, Shimoyama Y. Clinicopathologic study of cholangiocarcinoma with superficial spread. *Ann Surg* 2009; **249**: 296-302
- 132 **Nanashima A**, Sumida Y, Tobinaga S, Abo T, Takeshita H, Sawai T, Hidaka S, Fukuoka H, Nagayasu T. Characteristics of bile duct carcinoma with superficial extension in the epithelium. *World J Surg* 2009; **33**: 1255-1258
- 133 **Kim HJ**, Lee JM, Kim SH, Han JK, Lee JY, Choi JY, Kim

- KH, Kim JY, Lee MW, Kim SJ, Choi BI. Evaluation of the longitudinal tumor extent of bile duct cancer: value of adding gadolinium-enhanced dynamic imaging to unenhanced images and magnetic resonance cholangiography. *J Comput Assist Tomogr* 2007; **31**: 469-474
- 134 **Senda Y**, Nishio H, Oda K, Yokoyama Y, Ebata T, Igami T, Sugiura T, Shimoyama Y, Nimura Y, Nagino M. Value of multidetector row CT in the assessment of longitudinal extension of cholangiocarcinoma: correlation between MDCT and microscopic findings. *World J Surg* 2009; **33**: 1459-1467
- 135 **Seo H**, Lee JM, Kim IH, Han JK, Kim SH, Jang JY, Kim SW, Choi BI. Evaluation of the gross type and longitudinal extent of extrahepatic cholangiocarcinomas on contrast-enhanced multidetector row computed tomography. *J Comput Assist Tomogr* 2009; **33**: 376-382
- 136 **Maetani I**, Ogawa S, Sato M, Igarashi Y, Sakai Y, Shibuya K. Lack of methylene blue staining in superficial epithelia as a possible marker for superficial lateral spread of bile duct cancer. *Diagn Ther Endosc* 1996; **3**: 29-34
- 137 **Lee SS**, Kim MH, Lee SK, Kim TK, Seo DW, Park JS, Hwang CY, Chang HS, Min YI. MR cholangiography versus cholangioscopy for evaluation of longitudinal extension of hilar cholangiocarcinoma. *Gastrointest Endosc* 2002; **56**: 25-32
- 138 **Kim HM**, Park JY, Kim KS, Park MS, Kim MJ, Park YN, Bang S, Song SY, Chung JB, Park SW. Intraductal ultrasonography combined with percutaneous transhepatic cholangioscopy for the preoperative evaluation of longitudinal tumor extent in hilar cholangiocarcinoma. *J Gastroenterol Hepatol* 2010; **25**: 286-292
- 139 **Tamada K**, Tomiyama T, Oohashi A, Aizawa T, Nishizono T, Wada S, Tano S, Miyata T, Satoh Y, Ido K, Kimura K. Bile duct wall thickness measured by intraductal US in patients who have not undergone previous biliary drainage. *Gastrointest Endosc* 1999; **49**: 199-203
- 140 **Tamada K**, Tomiyama T, Ichiyama M, Oohashi A, Wada S, Nishizono T, Tano S, Aizawa T, Ido K, Kimura K. Influence of biliary drainage catheter on bile duct wall thickness as measured by intraductal ultrasonography. *Gastrointest Endosc* 1998; **47**: 28-32
- 141 **Kuroiwa M**, Goto H, Hirooka Y, Furukawa T, Hayakawa T, Naitoh Y. Intraductal ultrasonography for the diagnosis of proximal invasion in extrahepatic bile duct cancer. *J Gastroenterol Hepatol* 1998; **13**: 715-719
- 142 **Tamada K**, Yasuda Y, Nagai H, Tomiyama T, Wada S, Ohashi A, Satoh Y, Ido K, Sugano K. Limitations of three-dimensional intraductal ultrasonography in the assessment of longitudinal spread of extrahepatic bile duct carcinoma. *J Gastroenterol* 2000; **35**: 919-923
- 143 **Tamada K**, Kanai N, Wada S, Tomiyama T, Ohashi A, Satoh Y, Ido K, Sugano K. Utility and limitations of intraductal ultrasonography in distinguishing longitudinal cancer extension along the bile duct from inflammatory wall thickening. *Abdom Imaging* 2001; **26**: 623-631
- 144 **Inoue H**. Diagnosis of Cancer Spread Using Percutaneous Transhepatic Biliary Cholangioscopy-guided Ultrasonography for Malignant Bile Duct Stenosis. *Diagn Ther Endosc* 2001; **7**: 159-164
- 145 **Tamada K**, Nagai H, Yasuda Y, Tomiyama T, Ohashi A, Wada S, Kanai N, Satoh Y, Ido K, Sugano K. Transpapillary intraductal US prior to biliary drainage in the assessment of longitudinal spread of extrahepatic bile duct carcinoma. *Gastrointest Endosc* 2001; **53**: 300-307

S- Editor Cheng JX L- Editor Webster JR E- Editor Zheng XM