

# Systematic variation in the temperature dependence of physiological and ecological traits

Anthony I. Dell<sup>a,b,1</sup>, Samraat Pawar<sup>a</sup>, and Van M. Savage<sup>a,c,d</sup>

<sup>a</sup>Department of Biomathematics, David Geffen School of Medicine, University of California, Los Angeles, CA 90024; <sup>b</sup>School of Marine and Tropical Biology, James Cook University, Townsville, QLD 4811, Australia; <sup>c</sup>Department of Ecology and Evolutionary Biology, University of California, Los Angeles, CA 90095; and <sup>d</sup>Santa Fe Institute, Santa Fe, NM 87501

Edited by James Hemphill Brown, University of New Mexico, Albuquerque, NM, and approved April 28, 2011 (received for review October 14, 2010)

To understand the effects of temperature on biological systems, we compile, organize, and analyze a database of 1,072 thermal responses for microbes, plants, and animals. The unprecedented diversity of traits ( $n = 112$ ), species ( $n = 309$ ), body sizes (15 orders of magnitude), and habitats (all major biomes) in our database allows us to quantify novel features of the temperature response of biological traits. In particular, analysis of the rising component of within-species (intraspecific) responses reveals that 87% are fit well by the Boltzmann–Arrhenius model. The mean activation energy for these rises is  $0.66 \pm 0.05$  eV, similar to the reported across-species (interspecific) value of 0.65 eV. However, systematic variation in the distribution of rise activation energies is evident, including previously unrecognized right skewness around a median of 0.55 eV. This skewness exists across levels of organization, taxa, trophic groups, and habitats, and it is partially explained by prey having increased trait performance at lower temperatures relative to predators, suggesting a thermal version of the life-dinner principle—stronger selection on running for your life than running for your dinner. For unimodal responses, habitat (marine, freshwater, and terrestrial) largely explains the mean temperature at which trait values are optimal but not variation around the mean. The distribution of activation energies for trait falls has a mean of  $1.15 \pm 0.39$  eV (significantly higher than rises) and is also right-skewed. Our results highlight generalities and deviations in the thermal response of biological traits and help to provide a basis to predict better how biological systems, from cells to communities, respond to temperature change.

Investigation of the thermal response of diverse biological processes should reveal general mechanisms by which life responds to Earth's complex and rapidly changing thermal landscape (1). General patterns of how temperature affects biological systems can be deduced in at least two ways. First, physiological and ecological traits (e.g., metabolic rate, encounter rate) can be measured for each species at its optimal temperature and plotted together to construct a single curve across species (2, 3). This interspecific approach has been used extensively (2–8), including studies of how climate affects biological systems (8–11). Second, a curve can be constructed by measuring trait values across a range of temperatures for a single species (intraspecific) (12, 13). In both intra- and interspecific cases, each curve can be characterized by its  $Q_{10}$  value or activation energy (4, 6). These parameters, along with optimal temperature and response breadth for intraspecific responses, can be contrasted to explore effects of taxa, traits, and habitats. Indeed, for nearly a century, intraspecific studies have been conducted on a huge diversity of physiological and ecological traits (3, 6, 12, 14–17). Comparative studies of these intraspecific data have tended to focus on a subset of available data (16, 18–21). A broad-scale comparative analysis of intraspecific thermal responses has not been performed previously because of a lack of a comprehensive database. As we now show, this approach provides new insights into the general features of thermal responses not accessible with interspecific studies.

We construct from the literature a database containing 2,445 intraspecific temperature responses. Our ecoinformatics approach allows us to: (i) combine these data into a single database with consistent measurement units and trait definitions and (ii)

describe patterns that suggest mechanisms responsible for generalities and deviations in the thermal dependence of biological traits. We compile data on both physiological and ecological traits but focus on those central to species interactions (*SI Appendix, Table S1*). The thermal response of interaction traits can be strongly influenced by organismal behavior (22–25), so we focus on how biological processes are executed (e.g., attack body velocity, handling rate) and not on decisions (e.g., attack probability, defense behavior probability) about whether to execute them. Requiring each response to have nonzero measurements at a minimum of four distinct temperatures that cover a range of at least 5 °C yields 1,072 responses. Our ontology categorizes these responses into 112 distinct traits that span levels of biological organization from internal physiology to species interactions (Fig. 1 and *Materials and Methods*). Traits were measured in marine, freshwater, and terrestrial habitats for 309 species of plants, microbes, and animals.

Thermal responses are typically unimodal over the full temperature range, but many studies only record measurements for a restricted temperature range over which responses typically rise or fall monotonically (3, 4, 8). Consequently, we analyze three components of the thermal response: the initial increase in the trait value with temperature (rise), its ultimate decrease at higher temperatures (fall), and the transition between the rise and fall components (unimodal) (*SI Appendix, Fig. S1*). After combining pseudoreplicates (*SI Appendix, SI Materials and Methods*), this process yields 374 rise, 70 fall, and 240 unimodal responses (minimum temperature range was increased to 10 °C for unimodals to capture both the rise and fall components).

## Results

Our analyses of these data reveal four novel aspects of the thermal responses of biological traits.

**Mean Activation Energy of Trait Rises.** We find a general pattern in the rise component, which covers the temperature range over which organisms commonly operate under natural conditions (3, 26). The metabolic theory of ecology (MTE) suggests that the Boltzmann–Arrhenius model from chemical reaction kinetics can be used to predict the rise of many biological rates and times, including systematic effects on metabolic rate (2–5, 8, 27–29). According to the MTE, the scaling of a biological rate,  $R$ , with body temperature,  $T$ , is

$$R = R_0 e^{-E/kT} \quad [1]$$

where  $E$  is activation energy,  $k$  is Boltzmann's constant, and  $R_0$  is an organism- and state-dependent scaling coefficient. Inter-

Author contributions: A.I.D. and V.M.S. designed research; A.I.D., S.P., and V.M.S. performed research; S.P. analyzed data; and A.I.D., S.P., and V.M.S. wrote the paper.

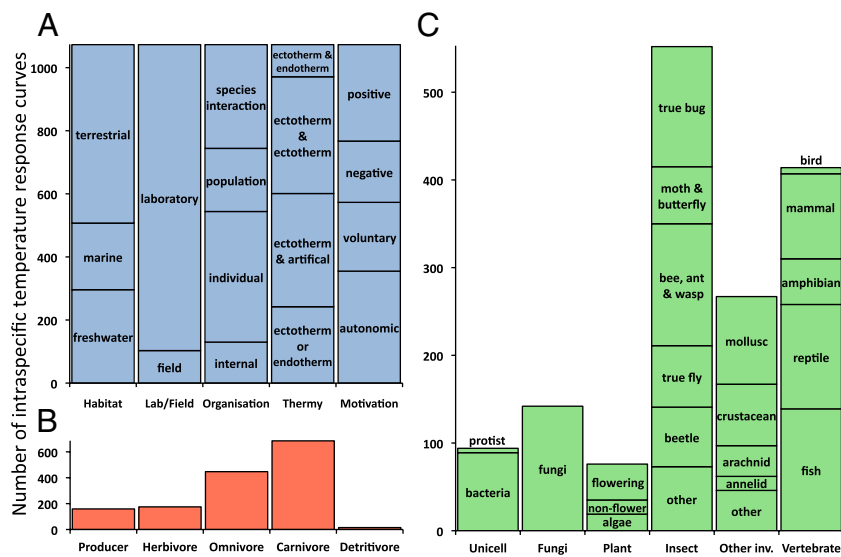
The authors declare no conflict of interest.

This article is a PNAS Direct Submission.

See Commentary on page 10377.

<sup>1</sup>To whom correspondence should be addressed. E-mail: adell@ucla.edu.

This article contains supporting information online at [www.pnas.org/lookup/suppl/doi:10.1073/pnas.1015178108/-DCSupplemental](http://www.pnas.org/lookup/suppl/doi:10.1073/pnas.1015178108/-DCSupplemental).

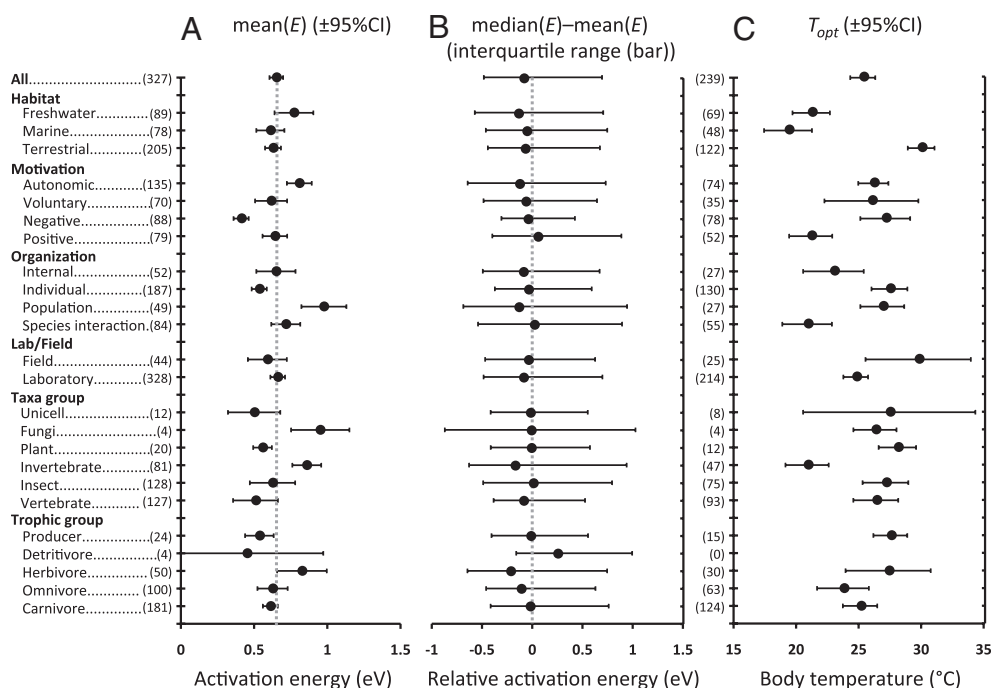


**Fig. 1.** Diversity of intraspecific temperature responses analyzed in our study. Total number of thermal response data for habitat, laboratory/field, level of biological organization, and thermity of predator or prey (traits involving single species) or predator and prey (traits involving interactions between two species) (artificial taxa are shown in *SI Appendix, Table S3*) as well as motivation (main text) (A), trophic group (B), and taxonomic group (C). B and C sum to more than 1,072 (the total number of responses) because species interactions include multiple species. Further details on trait categories and data sources are provided in *SI Appendix*.

specific studies have found that the activation energy,  $E$ , of most rises centers at or near 0.65 eV (2, 4, 18). However, activation energies for important metabolic reactions vary from  $\sim 0.2$ –1.2 eV (4, 18, 27), with 0.65 eV being near the middle of this range. Some variation around this value is therefore expected. This range corresponds to  $Q_{10}$  values (change in trait value when temperature is changed by 10 °C) of about 1.31–5.13 when averaged over 0–40 °C (*SI Appendix, Table S2*). Of the 374 intraspecific rises we analyze, 87% are consistent ( $R^2 \geq 0.5$ ,  $P < 0.05$ ) with the Boltzmann–Arrhenius model. The mean activation energy,  $E$ , of these responses is  $0.66 \pm 0.05$  eV [mean  $\pm$  95% confidence intervals (CIs) used throughout our paper] (Fig. 2A). The 95% CIs include the value of 0.65 eV reported across species for the MTE. The generality of this result across traits, taxa, trophic groups, levels of organization, and habitats (Fig. 1) may be attributable to the influence of metabolic rate on a wide range of biological processes (2, 30). Indeed, for rises that are significant, the vast majority (88%) of activation energies are between 0.2 and 1.2 eV, corresponding

to the range observed for metabolic reactions (4). Even at the population level, where variance is largest, 80% of all activation energies fall between this range (Fig. 2A). Of trait rises whose relationship to metabolic rate is more obvious (i.e., rates, times), a higher proportion (281 of 319) are significantly fit by the Boltzmann–Arrhenius model than those less clearly linked to metabolism (41 of 55), such as conversion efficiencies, optimal muscle strain, and angle of body turning during escape. Of all rises well fit by the Boltzmann–Arrhenius model, about a quarter have residuals with curvature, the vast majority of which are concave (downward). Such deviations from the Boltzmann–Arrhenius model have been observed previously in growth rate data (31, 32) (*Discussion*).

**Distribution of Activation Energy for Trait Rises.** We find systematic deviations around the mean activation energy of 0.66 eV for rise responses. The most noticeable deviation is strong right skewness (Figs. 2A and B and 3), which is consistent across levels of organization, taxa, habitats, and trophic groups. For unconstrained

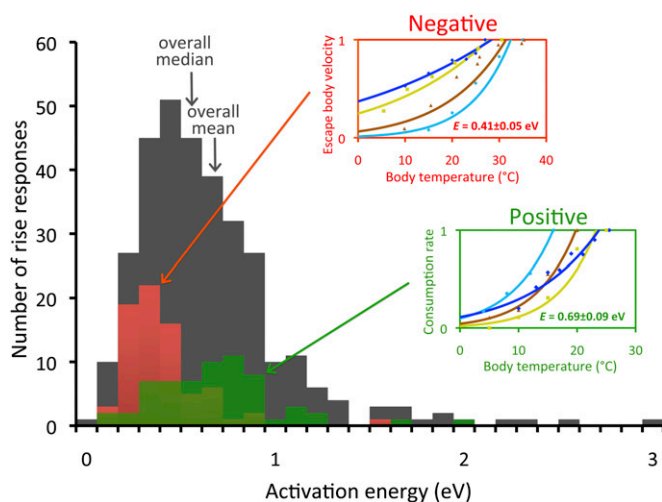


**Fig. 2.** Analysis of activation energies,  $E$ , for rise responses and temperatures for optimum trait values,  $T_{opt}$ . (A) Mean  $E$  ( $\pm$ 95% CI) of intraspecific rise responses calculated from the Boltzmann–Arrhenius model. Responses are grouped by habitat, motivation, level of biological organization, laboratory or field measurements, taxa, and trophic group. The vertical dotted line marks 0.65 eV, as reported for interspecific studies within the MTE. (B) Relative activation energy [median( $E$ ) – mean( $E$ )] of intraspecific rise responses bounded by the interquartile range. Symmetrical distributions have an equal mean and median, and thus a relative activation energy of zero (vertical dotted line). Most medians lie below zero, indicating right skew. (C) Mean  $T_{opt}$  ( $\pm$ 95% CI) of intraspecific unimodal responses. All values in parentheses are sample sizes with pseudoreplicates combined. Trait categorizations, definitions, treatment of pseudoreplicates, and data sources are provided in *SI Appendix*.

random processes, this right skewness indicates deviations from normality and random error (*SI Appendix, SI Materials and Methods*). In principle, right skewness for the rises can be produced by a random diffusion process constrained by a reflective boundary (33) at 0 eV. However, this mechanism does not explain our results because (i) there should be more activation energies close to the boundary (0 eV) than are observed (Fig. 3), indicating the boundary effect is either nonexistent or negligible, and (ii) different degrees of skewness, including lack of skewness, are observed in certain traits (Fig. 2B) (18). The right skewness we observe therefore represents a real and unexplained biological signal.

Independent of mechanism, this right skewness means that the majority of trait responses have activation energies below 0.66 eV (median of 0.55 eV) (Figs. 2B and 3). The MTE does not predict and cannot currently explain why the distribution of activation energies is right-skewed, and thus why the majority of rise responses have activation energies lower than 0.65 eV. Therefore, the MTE needs to be assessed to determine whether or not it can be extended to explain the full form of the distribution of activation energies and its biological consequences.

One possible mechanism driving skewness in rise activation energies is trait motivation. We define autonomic traits as those that largely act below the level of consciousness, such as basal metabolic rate, whereas somatic traits are largely under conscious control (34). We further classify somatic traits as negative (defense or movement away from a stimulus), positive (consumption or movement toward a stimulus), or voluntary. Body velocity, for



**Fig. 3.** Histograms of intraspecific activation energies. Gray columns are the total number of rise responses, red columns are the subset of these responses that correspond to negative motivation, and green columns are the subset of these responses that correspond to positive motivation. (*Insets*) Examples of responses of traits corresponding to positive (green) and negative (red) motivations, respectively. OLS regressions based on the Boltzmann-Arrhenius model (Eq. 1) were fitted to the rise component of each response. Trait values are normalized relative to the maximum trait value in each data series to present multiple responses on the same scale. Values of  $E$  for insets are mean values for all negative and positive motivation traits. Escape body velocities (m/s) (negative motivation) of the northern desert iguana (light blue circle,  $E = 0.96 \pm 0.52$  eV), western fence lizard (brown triangle,  $E = 0.63 \pm 0.28$  eV), African clawed frog (dark blue diamond,  $E = 0.25 \pm 0.06$  eV), and wandering garter snake (yellow square,  $E = 0.36 \pm 0.14$  eV) are shown. Consumption rates [consumed prey/(predator \* s)] (positive motivation) of river perch preying on phantom midge larvae (light blue circle,  $E = 0.99 \pm 0.25$  eV), back-swimmer preying on culex mosquito larvae (brown triangle,  $E = 1.09 \pm 0.46$  eV), dampwood termite feeding on eucalyptus tree (dark blue diamond,  $E = 0.65 \pm 0.40$  eV), and atlantic oyster drill preying on eastern oysters (yellow square,  $E = 1.18 \pm 0.83$  eV) are shown. Trait definitions, data fitting methods, and data sources are provided in *SI Appendix*.

example, can be negative (e.g., escape body velocity), positive (e.g., attack body velocity), or voluntary (e.g., voluntary body velocity). Analysis of trait rises reveals that negative motivation traits have significantly lower mean activation energies ( $0.40 \pm 0.05$  eV) than do positive ( $0.69 \pm 0.09$  eV), voluntary ( $0.64 \pm 0.12$  eV), or autonomic ( $0.76 \pm 0.08$  eV) traits (Figs. 2A and 3). Because negative motivation traits make up 23.4% of all rises and typically have lower activation energies, they contribute substantially to the right skewness observed across taxa and habitats (Fig. 3).

This difference in activation energies means that traits with negative motivation are less sensitive to temperature than traits that are positive or voluntary, and thus supports the hypothesis that stronger selection pressure on prey to escape capture and death [the life-dinner principle (35–37)] results in maintenance of nearly optimal performance across a range of temperatures. That is, although it is energetically costly to maximize effort at low temperature (3), individuals under attack may do so for survival. Prey presumably increase their performance at lower temperatures rather than decrease their performance at higher temperatures, which would more likely result in being captured by a predator. This differential performance is consistent with physiological limitations (38) or shifts in motivation at low vs. high temperatures (22–25). Moreover, diurnal and seasonal variation in temperature could allow the evolution of differences in, for example, the thermal response of attack and escape velocities needed for an individual to alternate between being both a predator and a prey.

By focusing only on body velocities, we can directly test the life-dinner principle. Consistent with the principle, rises for escape body velocity ( $0.39 \pm 0.05$  eV) have lower activation energies than do voluntary velocities ( $0.52 \pm 0.09$  eV). Moreover, we can quantify how much faster the mass-corrected coefficient ( $R_o$  in Eq. 1) at 20 °C for escape body velocity (2.61 m/s) is than for voluntary body velocity (0.31 m/s) (*SI Appendix, SI Materials and Methods*). These values represent averages across diverse taxa and are qualitatively similar to previous results for lizards that do not examine thermal effects (39, 40). For this analysis, we only included responses for which the individual was clearly and continually moving at a nearly constant velocity, thus precluding other effects and explanations related to behavior and shifts in motivation or strategy (*Materials and Methods*). Because escape or attack velocity is largely anaerobic and is governed by different biochemical pathways than voluntary velocity (41, 42), it may experience different selection pressures, contributing to differences in activation energies for thermal responses.

ANOVA of all rises shows that level of organization is also a strong predictor of mean rise activation energies (*SI Appendix, Table S4*), with internal ( $0.65 \pm 0.13$  eV) and individual ( $0.54 \pm 0.05$  eV) having a much lower mean  $E$  than population ( $0.98 \pm 0.15$  eV) (Fig. 2A). Fig. 4 shows rise activation energies for three major taxonomic lineages—terrestrial insects, fish, and lizards—categorized by level of organization. For all taxa, mean rise activation energies averaged across all traits are, again, very close to 0.65 eV (Fig. 4). Although data are too sparse to draw general conclusions, activation energies of trait rises are more variable and tend to increase from internal and individual traits to population and species interaction traits for insects and lizards (Fig. 4 and *SI Appendix, Table S4*).

**Trait Falls.** Few data or theories exist for the decline of trait performance at higher temperatures, and the data that do exist are often not of high quality. Protein degradation is considered a likely mechanism for falls of some traits (7, 38, 43), and in those cases, activation energy can be interpreted as the energy of degradation processes. Of the 70 fall responses we analyze, the mean  $E$  of the 31 significant falls is  $1.15 \pm 0.39$  eV and the median is 0.65 eV, indicating strong right skewness as found for trait rises. Falls have much higher activation energies than rises, consistent with the left skew typically observed in temperature responses (3, 5, 7, 26). We also find that several trait falls are conversion efficiencies

(SI Appendix, Table S3), contradicting the common tacit assumption of their temperature invariance (2, 9, 30, 44).

**Optimal Temperature and Unimodal Responses.** For the 240 unimodal responses, the mean temperature at which optimal trait values occur ( $T_{opt}$ ) is  $25.3 \pm 1^\circ\text{C}$ . Although temperature fluctuates more in terrestrial habitats than in freshwater or marine habitats, we find no evidence that  $T_{opt}$  is more variable for terrestrial taxa (Fig. 5). Our results cannot be attributed to factors such as the more homogeneous thermal landscape of aquatic habitats (45–49), because most of our data were measured in experimental arenas with constant temperatures (*Materials and Methods*). Therefore, organisms were not able to thermoregulate behaviorally, effectively eliminating differences between body and ambient temperature. Habitat is by far the strongest determinant of mean  $T_{opt}$  (Figs. 2C and 5 and SI Appendix, Table S5). Traits for terrestrial organisms have a higher mean  $T_{opt}$  ( $30^\circ\text{C}$ ) than those in freshwater ( $21^\circ\text{C}$ ) or marine organisms ( $19^\circ\text{C}$ ). These differences correspond to environmental temperatures (50), indicating a matching between environmental temperatures and those for near-optimal performance (3, 51).

### Discussion

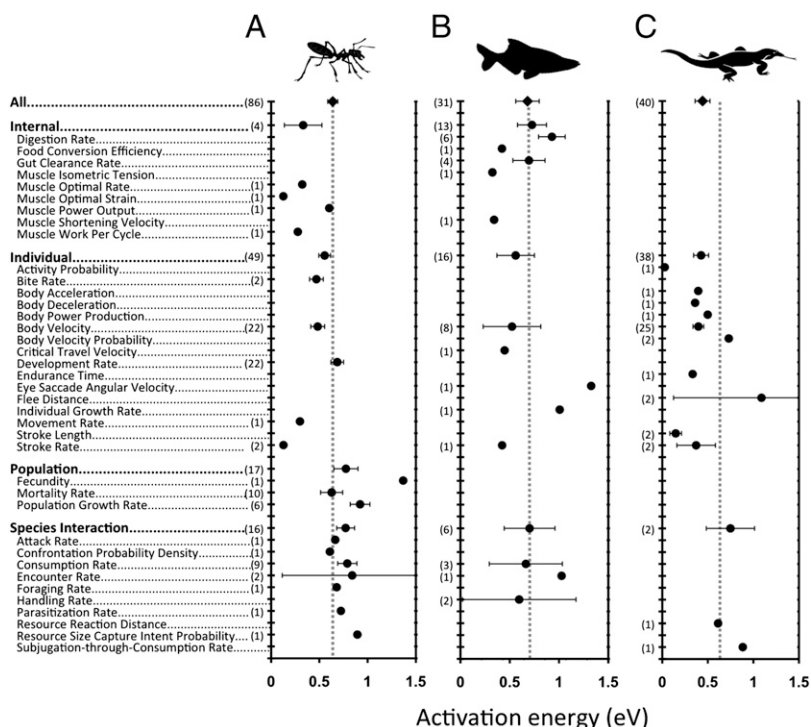
Our ecoinformatics analysis illuminates previously unrecognized generalities and deviations in how biological systems respond to temperature. We show that almost 90% of our intraspecific rise responses are well fit by the Boltzmann–Arrhenius model. Across all traits, the mean activation energy is 0.66 eV, close to the value of 0.65 eV reported for interspecific responses and indicating that metabolic rate potentially affects a wide range of biological processes (2, 4, 8, 28, 30). Nonetheless, we find systematic and substantial patterns in the variation of activation energies around this canonical value, including persistent right skewness in the distribution. Notably, the median value of activation energies is 0.55 eV, indicating that most activation energies are lower than 0.65 eV. Our results highlight limitations in the precision, power, and utility of the MTE as it currently stands. We conclude that the MTE requires reassessment and modification to discover whether it can explain these novel features of thermal responses.

The persistent right skewness in the distribution of activation energies raises important questions about whether to interpret the mean or median as the most biologically relevant measure. We expect that processes involving individuals or single species may be more affected by the median, because most individuals and species will have activation energies close to this value. In contrast, ecosystem processes may be determined more by the mean value because they represent an average over many individuals, species, and processes.

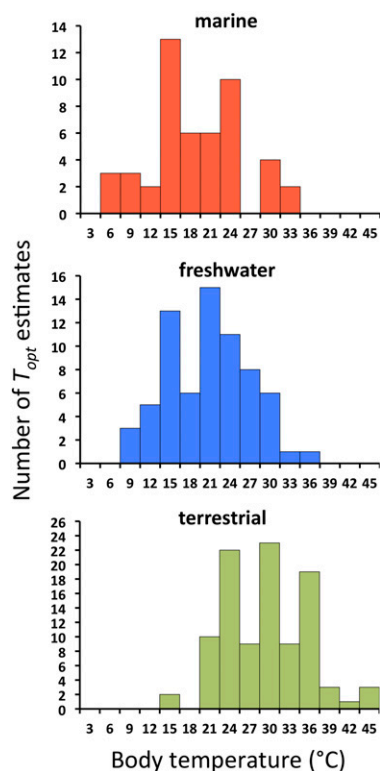
Folding the Boltzmann–Arrhenius model into a more realistic unimodal model (7, 13, 52) should prove insightful in this regard and may help to explain recently observed deviations of growth rate data fit to the model, including effects of the values and range of chosen experimental temperatures (32). Further elucidation of these effects requires more high-quality experimental data. Detailing the response of traits over the entire temperature range has been central to understanding and making predictions about the effects of climate change (53). We therefore encourage experimentalists to measure the response of a greater diversity of traits over the full temperature range, thus allowing characterization of the entire unimodal response.

The right skewness we observe in the distribution of activation energies persists across nearly all trait categories. Detailed analyses of these and similar patterns suggest dominant selection pressures and novel biological mechanisms. Differences between negative and positive motivation can be explained by a thermal version of the life-dinner principle (35–37), which predicts systematic differences in the thermal responses of organisms when they are acting as either a predator or a prey. Collecting more high-quality data for the thermal dependence of attack velocity is a high priority for more sensitive tests of the life-dinner principle.

We find that activation energies for rises are generally more variable and tend to increase as one moves from internal and individual traits to population and species interaction traits. This increase represents enhanced thermal sensitivity of populations and species interactions, potentially reflecting density or frequency dependence. These patterns probably have important consequences for species interactions and community stability, and their identification suggests that scaling constraints can be shifted or relaxed by evolutionary or behavioral processes. Data on multiple traits within



**Fig. 4.** Mean activation energies,  $E$  ( $\pm 95\%$  CI), of intraspecific rise responses calculated using the Boltzmann–Arrhenius model are categorized by different levels of organization for terrestrial insects (A), marine and freshwater fish (B), and terrestrial lizards (C). The vertical dotted lines mark 0.65 eV reported for interspecific studies (2, 4, 18). All values in parentheses are sample sizes with pseudoreplicates combined. Trait definitions, treatment of pseudoreplicates, and data sources are provided in SI Appendix.



**Fig. 5.** Histograms of  $T_{opt}$  categorized by habitat. The optima at 15 °C, 20 °C, 25 °C, 30 °C, and 35 °C likely represent overrepresentation of these temperatures in experimental studies. Data sources are provided in *SI Appendix, Tables S3 and S6*.

single species will also help to resolve our understanding of how temperature influences the interaction and integration of traits across different levels of biological organization (54). Investigation of the distribution of activation energies at the lowest level of organization, biochemical reactions, may reveal baseline variation that could be amplified across biological levels. For example, the distribution of activation energies based on a small sample of 11 biochemical reactions (table 3.1 in ref. 27) is right-skewed and may also contribute to the pervasive right skewness observed in our data.

Our trait ontology is a first categorization of thermal response curves and allows us to identify novel patterns and propose new mechanisms, such as right skewness and the life-dinner principle. Alternative categorization of the traits in our database will likely reveal other biological mechanisms. Because life evolves and operates across a complex thermal landscape, it is essential to synthesize empirical knowledge and to deduce general mechanisms for shifts in the thermal responses of biological traits. Our work is an important step along this path and should aid research on how species, communities, and ecosystems respond to changes in temperature.

## Materials and Methods

**Data Acquisition.** We searched the literature for studies that measured the intraspecific temperature response of biological traits, with a focus on those central to species interactions (main text). We found 273 data sources, including journal articles, published reports, and books. When possible, we contacted authors directly to obtain raw data. Otherwise, we extracted data directly from tables and text or from figures using DataThief (55). This process yielded 2,445 intraspecific temperature responses and 20,394 data points. We primarily selected studies where environmental conditions, such as precipitation, light, and prey density, were either controlled or standardized. Consequently, most responses (92.5%) were measured in the laboratory, where body temperature of ectotherms was known to be close to ambient (based on direct measurement and extended times at test temperatures). The 192 sources from which data were described and analyzed in this paper are listed in *SI Appendix, Table S6* and in the raw data in *SI Appendix, Table S3*.

**Trait Ontology.** We constructed an ontology that allowed us to classify biological traits in a way that permits subsets of data to be easily isolated and analyzed, and that defined categories of data closely tied to ecological measurements, intuition, and mechanisms. Construction of a universally accepted trait ontology is currently not achievable, and although our ontology (*SI Appendix, Table S1*) captures important patterns in the data, categorization of traits in other ways will likely reveal additional biological mechanisms. In this paper, we describe two main components of our ontology: level of biological organization and trait motivation. Levels of biological organization we define are internal (processes internal to the organism), individual (processes at the level of individual organisms that include mechanical interactions with the external environment), population (processes for a group of conspecific individuals), and species interaction (processes involving interaction between two or more species). Trait response can be strongly influenced by the motivation of an organism. For example, how fast an organism moves through the landscape depends not only on its morphological capacity and how this capacity interacts with the environment but on its motivation (36, 39, 40). We therefore also categorize trait motivation, which we define in the main text. *SI Appendix, Tables S1 and S3* detail the classification of each data series into this ontology.

**Unit Conversions.** Definitions and measures of many traits are inconsistent throughout the literature, so we identified equivalent traits and converted them to comparable definitions and units. All times were converted to rates to ensure a single currency. For consistency, and because of the counterintuitive nature of many mass-specific traits (e.g., detection distance), mass-specific units were converted to per number of individuals (i.e., per capita). Activation energies were the same whether traits were expressed per mass or per capita. Scaling coefficients were mass-corrected. Further discussion of intercept coefficients and their analysis, and a description of how species wet mass was estimated, are provided in *SI Appendix, SI Materials and Methods*.

**Data Quality and Classification.** To be included in our analysis, trait responses must have had (i) nonzero measurements at four or more distinct temperatures (thermal response models require a minimum of two free parameters) and (ii) a temperature range spanning at least 5 °C (it is difficult to differentiate statistically between linear and Boltzmann–Arrhenius model fits over smaller temperature ranges). For responses that satisfied these two criteria, we used ordinary least squares (OLS) regression to fit quadratic functions and then classified responses based on statistically significant coefficients as being rising, falling, or unimodal. For responses not fit well by a quadratic function, we calculated the correlation coefficient to categorize it as either rise or fall, or if our criterion for biological significance ( $R^2 \geq 0.5$ ,  $P$  value  $< 0.05$ ) was not met, it was excluded (8.3% of responses). Because unimodal responses include both rise and fall components, the minimum temperature range for inclusion was doubled to 10 °C for unimodals. Responses classified as being unimodal were further subdivided into rise (fall) components by iteratively removing trait measurements at upper (lower) terminal temperatures until monotonicity was observed in a contiguous subset of the response (*SI Appendix, Fig. S1*). After each data point removal, we reassessed whether a quadratic or cubic model fit better than a linear model. The model selection was done using the small-sample Akaike Information Criterion (AIC) value (56). In cases where only four points remained after removal of terminal points, an  $F$  test was used instead. The original unimodal responses were retained after their monotonic portions were extracted. Thus, we obtained three separate categories of temperature responses: rise (802), fall (239), and unimodal (536). These numbers include pseudoreplicates (*SI Appendix, SI Materials and Methods*), and rise and fall categories include responses that were extracted from the unimodal set. The MATLAB (MathWorks) code used for this procedure is available on request.

**Data Analysis of Monotonic Rise and Fall Temperature Responses.** We assessed fits and calculated  $E$  of both trait rises and falls for the Boltzmann–Arrhenius model in the same way. The fit of each response to the Boltzmann–Arrhenius model (Eq. 1) was assessed by OLS regression of log-transformed trait values on the reciprocal of temperature (in Kelvin). OLS regression was appropriate because temperatures are typically measured with much less error than trait values. The Boltzmann–Arrhenius model predicts that the transformed data would be best fit by a straight line. We considered the Boltzmann–Arrhenius model to fit a response if  $R^2 \geq 0.5$  and the  $F$  test  $P$  value is  $< 0.05$ . These relatively liberal criteria allowed us to use a larger set of responses to analyze deviations from the Boltzmann–Arrhenius model. We assessed how many responses showed concave upward or downward deviations by analyzing the residuals of the fits from above. Using OLS regression, we fit the residuals with a quadratic model using the same  $R^2$  and  $P$  values as above to

determine significance. The direction and magnitude of the curvature of residuals were recorded (values of the coefficient of the quadratic term). We could not use the small-sample AIC here to differentiate between a quadratic and linear fit to the residuals because most of our data consist of four points, for which the small-sample AIC cannot be calculated. To estimate the activation energies of trait rises, we calculated both ordinary and weighted averages of measured activation energies,  $E$ . Weights were calculated as the ratio of the total number of data points in each response to the total number of data points in all responses within a category (e.g., trait, taxon, habitat, level of organization, motivation). Weighted and unweighted 95% CIs were calculated for the respective means. We also calculated medians, skewness, and quartiles of the  $E$  in each category. We used ANOVA to detect differences in mean  $E$  between categories of rise responses, such as level of organization or habitat (SI Appendix, Table S4), but not for falls because of an inadequate sample size. We also tested whether the distribution of intercept coefficients (Eq. 1) was normal (SI Appendix, SI Materials and Methods).

- IPCC (2007) *Climate Change 2007: Synthesis Report. Contribution of Working Groups I, II and III to the Fourth Assessment Report of the Intergovernmental Panel on Climate Change* (IPCC, Geneva, Switzerland).
- Brown JH, Gillooly JF, Allen AP, Savage VM, West GB (2004) Toward a metabolic theory of ecology. *Ecology* 85:1771–1789.
- Angilletta MJ (2009) *Thermal adaptation: A Theoretical and Empirical Synthesis* (Oxford Univ Press, Oxford).
- Gillooly JF, Brown JH, West GB, Savage VM, Charnov EL (2001) Effects of size and temperature on metabolic rate. *Science* 293:2248–2251.
- Cossins AR, Bowler K (1987) *Temperature Biology of Animals* (Chapman & Hall, New York).
- Bennett AF (1980) The thermal-dependence of lizard behaviour. *Anim Behav* 28:752–762.
- Ratkowsky DA, Olley J, Ross T (2005) Unifying temperature effects on the growth rate of bacteria and the stability of globular proteins. *J Theor Biol* 233:351–362.
- Savage VM, Gillooly JF, Brown JH, Charnov EL (2004) Effects of body size and temperature on population growth. *Am Nat* 163:429–441.
- Vasseur DA, McCann KS (2005) A mechanistic approach for modeling temperature-dependent consumer–resource dynamics. *Am Nat* 166:184–198.
- Allen AP, Brown JH, Gillooly JF (2002) Global biodiversity, biochemical kinetics, and the energetic-equivalence rule. *Science* 297:1545–1548.
- Asbury DA, Angilletta MJ, Jr. (2010) Thermodynamic effects on the evolution of performance curves. *Am Nat* 176:E40–E49.
- Huey RB, Stevenson RD (1979) Integrating thermal physiology and ecology of ectotherms: A discussion of approaches. *Am Zool* 19:357–366.
- Schoolfield RM, Sharpe PJH, Magnuson CE (1981) Non-linear regression of biological temperature-dependent rate models based on absolute reaction-rate theory. *J Theor Biol* 88:719–731.
- Chadwick LE, Rahn H (1954) Temperature dependence of rattling frequency in the rattlesnake, *Crotalus v. viridis*. *Science* 119:442–443.
- Shapley H (1920) Thermokinetics of *Liometopum apiculatum* Mayr. *Proc Natl Acad Sci USA* 6:204–211.
- Huey RB, Kingsolver JG (1989) Evolution of thermal sensitivity of ectotherm performance. *Trends Ecol Evol* 4:131–135.
- Angilletta MJ, Niewiarowski PH, Navas CA (2002) The evolution of thermal physiology in ectotherms. *J Therm Biol* 27:249–268.
- Irlich UM, Terblanche JS, Blackburn TM, Chown SL (2009) Insect rate-temperature relationships: Environmental variation and the metabolic theory of ecology. *Am Nat* 174:819–835.
- Bauwens D, Garland T, Castilla AM, Vandamme R (1995) Evolution of sprint speed in lacertid lizards—Morphological, physiological, and behavioural covariation. *Evolution* 49:848–863.
- Huey RB, Berrigan D (2001) Temperature, demography, and ectotherm fitness. *Am Nat* 158:204–210.
- Huey RB, Bennett AF (1987) Phylogenetic studies of coadaptation—Preferred temperatures versus optimal performance temperatures of lizards. *Evolution* 41:1098–1115.
- Cooper WE (2000) Effect of temperature on escape behaviour by an ectothermic vertebrate, the keeled earless lizard (*Holbrookia propinqua*). *Behaviour* 137:1299–1315.
- Schieffelin CD, Dequeiroz A (1991) Temperature and defense in the common garter snake—Warm snakes are more aggressive than cold snakes. *Herpetologica* 47:230–237.
- Shine R, Olsson MM, Lemaster MP, Moore IT, Mason RT (2000) Effects of sex, body size, temperature, and location on the antipredator tactics of free-ranging gartersnakes (*Thamnophis sirtalis*, Colubridae). *Behav Ecol* 11:239–245.
- Herral A, James RS, Van Damme R (2007) Fight versus flight: Physiological basis for temperature-dependent behavioral shifts in lizards. *J Exp Biol* 210:1762–1767.
- Martin TL, Huey RB (2008) Why “suboptimal” is optimal: Jensen’s inequality and ectotherm thermal preferences. *Am Nat* 171:E102–E118.
- Johnson FH, Eyring H, Stover BJ (1974) *The Theory of Rate Processes in Biology and Medicine* (Wiley, New York).
- Allen AP, Gillooly JF, Savage VM, Brown JH (2006) Kinetic effects of temperature on rates of genetic divergence and speciation. *Proc Natl Acad Sci USA* 103:9130–9135.
- Somero GS (1997) *Handbook of Physiology* (Oxford Univ Press, New York), pp 1391–1444.
- Peters RH (1983) *The Ecological Implications of Body Size* (Cambridge Univ Press, Cambridge, UK).
- Ratkowsky DA, Olley J, McMeekin TA, Ball A (1982) Relationship between temperature and growth rate of bacterial cultures. *J Bacteriol* 149:1–5.
- Knies JL, Kingsolver JG (2010) Erroneous Arrhenius: Modified arrhenius model best explains the temperature dependence of ectotherm fitness. *Am Nat* 176:227–233.
- McShea DW (1994) Mechanisms of large-scale evolutionary trends. *Evolution* 48:1747–1763.
- Dorland WAN (2007) *Dorland’s Illustrated Medical Dictionary* (Saunders, New York) 31st Ed.
- Dawkins R, Krebs JR (1979) Arms races between and within species. *Proc R Soc Lond B Biol Sci* 205:489–511.
- Scales JA, King AA, Butler MA (2009) Running for your life or running for your dinner: What drives fiber-type evolution in lizard locomotor muscles? *Am Nat* 173:543–553.
- Brodie ED, III (1999) Brodie ED, Jr. (1999) Predator-prey arms races. *Bioscience* 49:557–568.
- Hochachka PW, Somero GN (1984) Biochemical adaptation: Mechanisms and process in physiological evolution. *Biochemical Adaptation* (Princeton Univ Press, Princeton).
- Irschick DJ, Losos JB (1998) A comparative analysis of the ecological significance of maximal locomotor performance in Caribbean Anolis lizards. *Evolution* 52:219–226.
- Husak JF (2006) Does survival depend on how fast you can run or how fast you do run? *Funct Ecol* 20:1080–1086.
- Bennett AF (1989) Integrated studies of locomotor performance. Complex organismal functions. *Integration and Evolution in Vertebrates* 45:191–202.
- Bennett AF (1991) The evolution of activity capacity. *J Exp Biol* 160:1–23.
- Johnson FH, Lewin I (1946) The growth rate of *E. coli* in relation to temperature, quinine and coenzyme. *J Cell Physiol* 28:47–75.
- Allen AP, Gillooly JF, Brown JH (2005) Linking the global carbon cycle to individual metabolism. *Funct Ecol* 19:202–213.
- Hey RB (1974) Behavioral thermoregulation in lizards: Importance of associated costs. *Science* 184:1001–1003.
- McConnachie S, Greene SN, Perrin MR (2011) Thermoregulation in the semi-aquatic yellow anaconda, *Eunectes notaeus*. *J Therm Biol* 36:71–77.
- Huey RB, Pianka ER, Hoffman JA (1977) Seasonal-variation in thermoregulatory behaviour and body-temperature of diurnal Kalarahi lizards. *Ecology* 58:1066–1075.
- Wilson RS, Franklin CE (2000) Inability of adult *Limnodynastes peronii* (Amphibia: Anura) to thermally acclimate locomotor performance. *Comp Biochem Physiol A Mol Integr Physiol* 127:21–28.
- Tracy CR, Christian KA, O’Connor MP (1993) Behavioural thermoregulation by *Bufo americanus*—The importance of the hydric environment. *Herpetologica* 49:375–382.
- Vasseur DA, Yodzis P (2004) The color of environmental noise. *Ecology* 85:1146–1152.
- Deutsch CA, et al. (2008) Impacts of climate warming on terrestrial ectotherms across latitude. *Proc Natl Acad Sci USA* 105:6668–6672.
- Johnson F, Eyring H, Stover BJ (1977) Reaction rate theory in bioluminescence and other life phenomena. *Annu Rev Biophys Bioeng* 6:111–133.
- Huey RB, et al. (2009) Why tropical forest lizards are vulnerable to climate warming. *Proc Biol Sci* 276:1939–1948.
- Huey RB (1982) Temperature, physiology, and the ecology of reptiles. *Biology of Reptilia*, eds Gans C, Pough FH (Academics, London, UK), Vol 12, pp 25–91.
- Summers B (2006) DataThief version 1.6. Available at <http://datathief.org/>.
- Burnham KP, Anderson DR (2002) *Model Selection and Multimodel Inference: A Practical Information-Theoretic Approach* (Springer, New York), 2nd Ed.