



Published in final edited form as:

Antiviral Res. 2011 June ; 90(3): 151–159. doi:10.1016/j.antiviral.2011.03.179.

Cytomegalovirus reactivation in critically ill immunocompetent hosts: A decade of progress and remaining challenges

Charles H. Cook¹ and Joanne Trgovcich²

¹ Department of Surgery, The Ohio State University, Columbus, OH 43210

² Department of Pathology, The Ohio State University, Columbus, OH 43210

Abstract

Human cytomegalovirus (HCMV) is an undisputed pathogen in humans with severe immunocompromise that has historically been thought to carry little consequence in immunocompetent hosts. During the past decade, however, accumulating data suggest that significant numbers of immunocompetent humans reactivate HCMV during critical illness, and that these reactivation episodes are associated with worsened outcomes. Because most people are infected with this ubiquitous virus by adulthood, confirming pathogenicity has now become a clinical priority. In this article, we will review the incidence and implications of reactivation, the relevant immune responses and reactivation triggers relevant to the immunocompetent host. We will summarize the progress made during the past ten years, outline work ongoing in this field, and identify the major gaps remaining in our emerging understanding of this phenomenon.

1. Introduction

Millions of immunocompetent people suffer critical illness each year (Halpern and Pastores, 2010). Since our interest in cytomegalovirus (CMV) in this population began in the nineties (Cook et al., 1998), it has become increasingly clear that many of these individuals experience CMV reactivation during their critical illness. This finding has now been reproduced independently by 8 different groups (Chiche et al., 2009; Chilet et al., 2010; Heininger et al., 2001; Jaber et al., 2005; Kutza et al., 1998; Limaye et al., 2008; von Muller et al., 2006; Ziemann et al., 2008). More importantly, these clinical data have shown that CMV reactivation during critical illness is associated with increased morbidity and mortality. In this review, we will discuss the incidence, causes, and potential consequences of CMV reactivation in non-immunosuppressed critically ill hosts. We will also highlight contemporary challenges facing researchers and clinicians in this field. Because the terms non-immunosuppressed and immunocompetent are both used frequently by different authors, we will use these terms interchangeably to distinguish patients as not receiving canonical immune suppression and not having immune compromise from HIV/AIDS. We do this understanding that critical illness can induce transient immune compromise.

© 2011 Elsevier B.V. All rights reserved.

Contact: Charles H. Cook MD, FACS, N747 Doan Hall, 410 West Tenth Ave., Columbus, OH 43210, (614) 293-4695 Voice, (614) 293-3425 Fax, charles.cook@osumc.edu (ok to publish).

Publisher's Disclaimer: This is a PDF file of an unedited manuscript that has been accepted for publication. As a service to our customers we are providing this early version of the manuscript. The manuscript will undergo copyediting, typesetting, and review of the resulting proof before it is published in its final citable form. Please note that during the production process errors may be discovered which could affect the content, and all legal disclaimers that apply to the journal pertain.

2. Primary infection and latency

Cytomegaloviruses for all species are ubiquitous and have classic beta-herpes virus characteristics. Following host control of primary lytic infection, CMV establishes life-long infection, becoming dormant in multiple end organs, a state also referred to as latency. Previous infection is most often confirmed by presence of CMV-specific IgG responses. Roughly 50–70% of school aged adolescents in the U.S. are human CMV (HCMV) seropositive (Stadler et al., 2010; Stanberry et al., 2004; Staras et al., 2006), and this percentage increases to >80% with age (Musiani et al., 1988). Thus significant numbers of immunocompetent patients harbor latent virus, making them “at risk” for reactivation during critical illness.

3. Reactivation from latency

Defining viral reactivation must begin with the definition of latency. Although a full discussion of latency is beyond the scope of this review, most authors use some variation of an operational definition that requires presence of viral DNA in tissues without transcription or translation of lytic or “late” gene RNAs to protein and thereby absence of lytic virus (for review see (Reeves and Sinclair, 2008)). Thus from a purist point of view, viral reactivation can be defined as recovery of infectious virus following some period of viral latency. Importantly we have confirmed that recovery of lytic virus is possible from immunocompetent patients during critical illness (Cook et al., 2003). Nonetheless isolation of lytic virus appears to be less sensitive for detecting CMV reactivation in immunocompetent patients than molecular methods (Kalil and Florescu, 2009) just as it is in immunosuppressed patients (Weinberg et al., 2000). This insensitivity is complicated by the fact that immunocompetent patients manifest mostly non-specific signs and symptoms during primary infection or reactivation episodes, making these events frequently “occult” (Adler, 2008; Cook et al., 1998). In addition, immunocompetent patients have narrower windows of diagnostic opportunity given their ability to ultimately control reactivation episodes (Chilet et al., 2010; Limaye et al., 2008; von Muller et al., 2007).

The lower sensitivity of culture for detecting HCMV reactivation in humans has led to development of newer more sensitive methods, which are all byproducts of advances in monitoring immunosuppressed patients. Historically, elevations in anti-CMV IgG titers were used to diagnose reactivation in latently infected hosts (Nagington, 1971), but antibody titer fluctuations lacked specificity leading to abandonment of this method. Although recovery of lytic virus appears to correlate better with symptomatic CMV reactivation, its lower sensitivity has led to its disuse (Hebart and Einsele, 1998). Currently, molecular methods that quantitate CMV DNAemia or antigenemia are considered by most to be most sensitive and therefore the most widely used for immunosuppressed patients (Weinberg et al., 2000), and these also appear to be the most sensitive for immunocompetent patients (Kalil and Florescu, 2009). Increasing sensitivity in detecting CMV reactivation has come at a price, requiring distinction between “CMV disease” and “viral shedding” in immunosuppressed patients, because not all positive patients with reactivation show disease manifestations. We suspect that this phenomenon might also be true for immunocompetent patients, and that some reactivation episodes could be trivial while others are not. Indeed, the scant data available to date suggest that higher viral loads during reactivation are associated with worse outcomes (Limaye et al., 2008), and this topic will require keen attention in future clinical trials.

4. Reactivation incidence

Trying to pin down the actual incidence of CMV reactivation during critical illness has been confounded by several factors. One is the monitoring methodology chosen as previously

discussed. When only CMV IgG positive patients are analyzed, reactivation incidence is observed in 22–42% (Kalil and Florescu, 2009). Timing of monitoring also influences detection because reactivation does not occur immediately. As shown by recent studies, reactivation typically occurs between 1–3 weeks after critical illness begins (Chilet et al., 2010; Cook et al., 2003; Limaye et al., 2008). Thus if testing is done too early, the incidence of reactivation is grossly underestimated, as highlighted by two studies monitoring for reactivation within 4 days of admission (Desachy et al., 2001; Razonable et al., 2002). The etiology of one's critical illness also appears to influence reactivation rates, with burn and trauma patients possibly at higher risk than cardiac or medical ICU patients (Limaye et al., 2008). Finally, a recent study that evaluated bronchoalveolar lavage fluid suggested even higher rates of reactivation (42%) than those seen from peripheral blood (Chilet et al., 2010), suggesting that the site of testing can influence detection. Taken together, if one excludes studies with very early monitoring and monitors only those with latent CMV, a reasonable estimate of reactivation appears to be 1 in 3 non-immunosuppressed critically ill patients.

5. Reactivation implications

Despite the incontrovertible evidence that HCMV reactivates in non-immunosuppressed patients during critical illness, the question remains over the clinical consequence. It is relevant to note that this is the same conundrum that faced transplant surgeons almost 40 years ago (Lopez et al., 1974). During the subsequent decades, HCMV reactivation has become recognized as a pathogen in those without fully functional immune systems (Gaytant et al., 2002; Gor et al., 1998; Simmons et al., 1977; Steininger, 2007). Intensivists are now facing the same question in patients who were immunocompetent before they became critically ill? Is reactivated HCMV a pathogen in these patients, or an innocent bystander indentifying those with transient immune suppression or immunological insult?

The preponderance of recent clinical data supports the hypothesis that HCMV is a pathogen during critical illness. Studies to date have demonstrated consistent morbidity in these patients, including increased durations of mechanical ventilation (Chiche et al., 2009; Cook et al., 2003; Cook et al., 1998; Curtsinger et al., 1989; Heininger et al., 2001; Jaber et al., 2005; Kutza et al., 1998; Limaye et al., 2008; von Muller et al., 2006; Ziemann et al., 2008) and even acute respiratory distress syndrome (ARDS)(Papazian et al., 2007; Papazian et al., 1998). Consistent with increased duration of mechanical ventilation, there are also associated increases in ICU lengths of stay (Chiche et al., 2009; Chilet et al., 2010; Cook et al., 2003; Curtsinger et al., 1989; Domart et al., 1990; Heininger et al., 2001; Jaber et al., 2005; von Muller et al., 2006; Ziemann et al., 2008). There is striking consistency between studies, despite a variety of etiologies for critical illness and diagnostic methods to identify viral reactivation. We have been particularly intrigued by the association between HCMV reactivation and increased durations of mechanical ventilation and ARDS because lungs are a primary site of latent virus and a consistent site of reactivation (Cook et al., 2003; Cook et al., 1998; Heininger et al., 2001; Jaber et al., 2005; Kutza et al., 1998; Limaye et al., 2008; Toorkey and Carrigan, 1989; von Muller et al., 2006).

In addition to morbidity, there are now data associating CMV reactivation during critical illness with mortality risk. Recent work from Ziemann's group has associated HCMV reactivation with increased risk of dying (Ziemann et al., 2008), and Limaye et al have shown excellent correlation between increasing HCMV viral load during reactivation and worsened outcomes (Limaye et al., 2008). In addition, a recent meta-analysis has shown that immunocompetent patients with CMV reactivation during critical illness have a doubled risk of death (Kalil and Florescu, 2009). It is interesting that this CMV-associated risk is similar to that seen in HIV patients with HCMV DNAemia (2-4X more likely to die - independent of HIV load and CD4 counts and despite highly active antiretroviral therapy)(Wohl et al.,

2005). Thus there are sufficient correlative clinical data to suggest that CMV reactivation in previously immunocompetent patients may indeed have clinical consequences during critical illness.

6. Animal models

Because of the purely correlative relationship between CMV reactivation and poor outcomes, and both ethical and practical limitations in human studies, we have turned to animal models to study mechanisms of reactivation and disease. Although there are several described models of CMV, perhaps the most popular is murine CMV (MCMV)(Gonczol et al., 1985). MCMV and HCMV share significant genetic and functional similarities, and MCMV is considered an excellent model for HCMV infection, latency and reactivation (Gonczol et al., 1985; Ho, 1982; Hummel and Abecassis, 2002; Rawlinson et al., 1996; Reddehase et al., 2002). Following acute primary infection of immunocompetent mice or humans, there is control of the acute infection but not eradication of virus. This leads to lifelong viral latency, and both MCMV and HCMV can be reactivated by any number of triggers (reviewed in (Hummel and Abecassis, 2002) and below). Interestingly, despite affording the ability to directly analyze tissues for viral transcription and lytic virus, these models are plagued with the same difficulties of reactivation detection as described in immunocompetent humans. Importantly, MCMV has the same proclivity as HCMV for several organs, including lungs (Balthesen et al., 1993), which makes it an ideal model to study the pulmonary effects of reactivation (Balthesen et al., 1993; Collins et al., 1993; Koffron et al., 1998; Kurz et al., 1997).

7. Immune responses to CMV

It is important to note that the immune responses to MCMV and HCMV also share many similarities. Both innate and adaptive immunity are important for viral control during acute and latent infection (Lemmermann et al.; Lenac et al., 2008; Polic et al., 1998; Pyzik et al., 2010; Rolle and Olweus, 2009; Wilkinson et al., 2008). HCMV and MCMV both induce very broad CD8 and CD4 T-memory responses (Babel et al., 2008; Holtappels et al., 2008; Holtappels et al., 2002; Kern et al., 2002; Kern et al., 2000; Munks et al., 2006a; Munks et al., 2006b; Walton et al., 2008). Likewise, both viruses induce transient IgM followed by lifelong IgG antibody responses (Lawson et al., 1988). Although there is some dissimilarity between receptors and ligands, NK cells are important to control of both viruses (Andrews et al., 2010; Babić et al.; Jackson et al.; Lenac et al., 2008; Wilkinson et al., 2008). Finally, although not genetically identical, both viruses contain numerous immune evasion genes, several with functional similarity, that influence both innate and adaptive immunity (reviewed in (Jackson et al., in press; Lemmermann et al., in press)).

For CD8 T-cells, some hosts develop “inflationary” CMV-specific memory responses that grow to occupy very large percentages of the T-memory compartment (Gillespie et al., 2000; Holtappels et al., 2002; Karrer et al., 2003; Karrer et al., 2004; Olsson et al., 2001; Ouyang et al., 2003; Reddehase et al., 1985; Sierro et al., 2005; Sylwester et al., 2005; Vescovini et al., 2007). The purpose of these inflated T-cell responses has vexed investigators since their first description (Reddehase and Koszinowski, 1984), but recent data suggest that these T-cells help to maintain latency (Simon et al., 2006). Curiously, unlike mice undergoing high titer infections, not all humans develop T-memory inflation (Gillespie et al., 2000; Sylwester et al., 2005; Vescovini et al., 2007). We have recently shown that the development of such inflationary memory may depend upon the conditions of the original infection (Thomas et al., 2010), and we are currently attempting to determine whether repeated reactivation episodes can cause MCMV-specific memory inflation as has been suggested to occur in humans.

8. Reactivation triggers

Reactivation of latent HCMV can be triggered by a variety of stimuli. The most obvious cause of reactivation is immunosuppression and patients receiving immunosuppressive medications after transplantation or who have immune compromising diseases such as HIV are prone to CMV reactivation and disease (Steininger, 2007). HCMV reactivation in immunocompetent patients has been associated with stress (Toro and Ossa, 1996), inflammatory states such as sepsis (Cook et al., 1998; Heininger et al., 2001; Kalil et al., 2010; von Muller and Mertens, 2008), inflammation (Döcke et al., 2003; Docke et al., 1994; Fietze et al., 1994; Prosch et al., 1995; Stein et al., 1993), and even endogenous catecholamines (Prosch et al., 2000; Salem et al., 2006). To further characterize these associations, we have used the MCMV model to confirm that bacterial sepsis, toll-like receptor 4 signaling and inflammatory cytokines can all trigger reactivation of latent CMV in lungs of immunocompetent mice (Cook et al., 2002; Cook et al., 2006a). Although steroid use during critical illness has been associated with CMV reactivation in a few reports (Chiche et al., 2009; Cook et al., 2003; Jaber et al., 2005; Wiener-Well et al., 2006), we have been unable to confirm this using our animal model (Forster et al., 2009). Our most recent work suggests that transient contraction of MCMV-specific memory induced by heterologous bacterial antigens (such as LPS) during sepsis may actually trigger reactivation (Cook et al. manuscript in review). From our perspective most of the inflammatory “triggers” have at least transient immune suppressive consequences that could influence T-memory thereby facilitating reactivation. Host immunity in immunocompetent patients during CMV reactivation has been reported by only two investigators to date (Chilet et al., 2010; von Muller et al., 2007), with two additional studies ongoing: one in burn patients (Cairns et al NCT00467532) and the other in ICU patients (Papazian et al NCT00699868). We consider this a very fertile area of investigation that should help to better define those most at risk for reactivation and poor outcome.

9. Reactivation versus reinfection

Although it may be considered hair-splitting by some, it is possible that not all “reactivation” events identified in ICU patients are truly reactivation. It is clear that humans, mice, and non-human primates can all be reinfected with different CMV strains despite previous infection and pre-existing CMV-specific immune responses (Gorman et al., 2006; Hansen et al., 2010; Ross et al., 2010). This raises the possibility that critically ill humans are not reactivating latent virus, but are simply being reinfected during their illness. It is well accepted that CMV can be transmitted by blood transfusions (Adler et al., 1985; Cheung and Lang, 1977; Drew and Miner, 1982; Kantor et al., 1970; Lerner and Sampliner, 1977; Stevens et al., 1970), and we and others have observed a higher incidence of transfusions in patients with active CMV during critical illness (Chiche et al., 2009; Cook et al., 2003; Curtsinger et al., 1989; Jaber et al., 2005). One mechanism for this putative occurrence could be passenger leukocytes in banked blood transmitting infection to the recipient (Schrier et al., 1985). Alternatively, passenger leukocytes might provide allogeneic stimulation which can trigger CMV reactivation (Forster et al., 2009; Soderberg-Naucler et al., 1997). Leukoreduction has been shown to reduce risk of blood related CMV transmission (Eisenfeld et al., 1992; Hillyer et al., 1994), and possibly reactivation during critical illness (Stephan et al., 1996), but an influence on CMV detection during critical illness is not supported by meta-analysis (Kalil and Florescu, 2009). Moreover, in all the studies to date, the overwhelming majority of patients that have documented viral activity during critical illness were CMV-IgG positive to begin with. While it is possible that CMV IgG-positivity identifies those most susceptible to reinfection, the simpler explanation is that endogenous latent virus is reactivating. The fact that reactivation can be recapitulated in our murine model proves that reactivation is possible in immunocompetent hosts (Cook et al.,

2002; Cook et al., 2006a). The dynamics of different HCMV strains within the same host have just recently been described by deep sequencing HCMV in transplant patients (Gorzer et al., 2010), and such studies in critically ill patients would help to answer this reinfection question. Thus, current evidence supports reactivation as the primary source of CMV activity during critical illness, though we acknowledge the possibility that some of these episodes may ultimately prove to represent reinfections.

10. The \$64,000 question

As we have recently suggested, one remaining \$64,000 question is whether CMV reactivation during critical illness is pathogen or bystander (Cook, 2009). We have shown that CMV reactivation in immunocompetent mice can cause lung injury, and more importantly that both reactivation and this lung injury can be prevented by antiviral therapy (Cook et al., 2006b). Our most recent data clearly show that waiting for reactivation to occur mitigates the benefits of antiviral treatment, and that the best treatment effects occur when those at risk receive early antiviral “prophylaxis” (Forster et al., 2010). Antiviral treatment in critically ill humans published to date has been limited to patients with demonstrated reactivation, and our animal data therefore might explain the lack of response to antivirals seen in this setting (Cook et al., 1998; Heininger et al., 2001; Jaber et al., 2005). Based upon this, we and others have suggested that to definitively answer this pathogen versus bystander question, a randomized prospective trial of antivirals in critically ill patients at risk is required (Cook, 2007; Griffiths, 2010; Limaye et al., 2008; Osawa and Singh, 2009). Fortunately, Boeckh et al have recently been funded to begin such studies in critically ill humans with acute lung injury at risk for reactivation (NHLBI 1U01HL102547). Although their primary endpoint is not mortality, their work should be foundational to answering this most relevant question. For now however, we continue to recommend against antiviral therapy in critically ill immunocompetent patients outside of a randomized clinical trial.

11. Barriers to progress

While we await results from the Boeckh clinical trial, there are at least four major barriers that need to be addressed to continue moving this field forward. First we must better understand how CMV injures immunocompetent hosts. Second, we need to identify those most at risk for reactivation so that we can target interventions. Third, new therapies must be developed that will allow treatment of critically ill patients without causing them harm. Finally, adequate resources need to be allocated to continue pursuit of these major gaps.

11.1.1. Barrier 1 - How does CMV injure immune competent hosts?—Whatever the mechanism of injury, it seems reasonable to assume that there will be significant differences between immunocompetent and immunosuppressed hosts. Unlike HIV or transplant patients with disease tempered or intentionally inhibited immune responses, immunocompetent patients bring their full complement of T and B-cells to the onset of critical illness. Indeed, immunocompetent critically ill patients do not seem to be dying from overwhelming viremia (Chilet et al., 2010; Limaye et al., 2008; von Muller et al., 2007), but there are several other mechanisms by which CMV reactivation might cause them disease. First is direct cytopathology from reactivated lytic virus injuring organs that harbor virus (Barry et al., 2000). Second is an immunopathologic effect, in which damage to tissues is a collateral consequence of the immune response to virus (Bologan-Fritts et al., 2007; Grundy et al., 1987; Soderberg-Naucler, 2006). Finally, CMV is known to make hosts susceptible to bacterial or fungal super-infection (Hamilton and Overall, 1978; Hamilton et al., 1976), and indeed there has been association shown between immunocompetent patients with CMV reactivation and bacterial infections (Chiche et al., 2009; Cook et al., 2003; Cook et al., 1998; Domart et al., 1990; Jaber et al., 2005). We therefore suspect that patients with CMV

reactivation suffer these more insidious injuries to end organs, such as lungs, making them susceptible to poor outcomes. Our group has previously focused only on lungs, but many other organs are known to harbor latent virus (Collins et al., 1993) and might also be influenced by reactivation during critical illness.

11.1.2. Pathogenic immune responses—One hypothesis that we are investigating is that latently infected immunocompetent hosts maintain anti-CMV defenses that carry pathologic potential during other illnesses. This concept was first proposed over 20 years ago, although in the context of immunosuppressed patients (Grundy et al., 1987). We have previously shown that CMV-latent mice are primed for an exaggerated pulmonary inflammatory response to sepsis, a phenomenon that we now term CMV-associated lung injury (CMV-ALI) (see Figure 1, (Cook et al., 2006b)). Given the previously discussed innate and adaptive immune responses to CMV, it is possible that either or both could contribute to CMV-ALI. For example, CMV-specific inflammatory CD8 T-effector memory (T_{EM}) cells are known to secrete TNF- α and IFN- γ in response to cognate antigen (Babel et al., 2008; Khan et al., 2007; Vescovini et al., 2007). We have recently shown that these same MCMV-specific CD8 T-cells are activated in MCMV-latent mice during sepsis (Forster et al., 2010). There is precedent for this hypothesis because T-cells in MCMV-latent mice activated non-specifically with anti-CD3 antibody cause a lethal “non-viral” pneumonitis (Tanaka et al., 1995; Tanaka et al., 1994). Similarly, T-memory has been shown to have immunopathologic potential in lungs following infection with other viruses, such as lymphochoriomeningitis virus and respiratory syncytial virus (Cannon et al., 1988; Chen et al., 2001). The clinical implication of these observations is significant when one considers that ganciclovir therapy does not prevent activation of these CMV-specific T-cells during sepsis (Forster et al., 2010). It is therefore possible that ganciclovir, which is effective for CMV-related disease in immunocompromised hosts, might not be as effective in immunocompetent hosts. Only by understanding CMV-related mechanisms of injury in immunocompetent hosts will we be able to develop the most effective therapies for these patients.

11.2 Barrier 2 - Identification of patients most at risk?

Although the Boeckh antiviral prophylaxis trial should begin to define the causative role for CMV reactivation and poor outcomes, a critical barrier to improving outcomes in these patients remains: how to identify those most at risk for CMV reactivation. As previously discussed, only ~1 of 3 latently infected critically ill patients will have CMV reactivation during their critical illness (Kalil and Florescu, 2009). Practically speaking this leaves 2 of 3 very sick patients in this clinical trial exposed to the risks of antiviral therapy - likely without benefit. It is therefore vital that methods be developed to allow better identification of those most “at-risk” for CMV in this patient population. We and others have previously proposed that reactivation risk is a consequence of underlying latent viral load and the severity of illness (Cook, 2007). Nonetheless, despite exhaustive analyses including a recent meta-analysis of multiple available data sets it has been impossible to narrow the group at risk for reactivation beyond ~1/3, even when severity of illness is considered (Kalil and Florescu, 2009). Tissue viral load, however, has not been tested as a risk factor in humans, mainly because non-invasive methods to determine latent viral load in tissues do not exist. Interestingly, available animal data suggest that tissue latent viral load is a critical determinant of reactivation risk ((Reddehase et al., 1994) and our unpublished data). In addition, the magnitude of the host immune response to CMV seems directly proportional to the viral load during the original infection (Thomas et al., 2010), suggesting that host tissue viral load might be approximated by the immune response that it provokes. Confirmation of this hypothesis is ongoing in our laboratory.

Independent of this correlation, recent literature suggests that CMV-related risk may come in another form in immunocompetent patients. The magnitude of the immune response to CMV has been recently associated with all cause mortality in the elderly (Roberts et al., 2010; Strandberg et al., 2009; Wang et al., 2010). In these population-based studies, patients with the highest quartile anti-CMV IgG antibody responses have worse all-cause mortality. Although it is somewhat counterintuitive, mice with the highest viral IgG titers are also at highest risk for reactivation (Reddehase et al., 1994). While it is therefore tempting to speculate that CMV reactivation might be contributing to worsened outcomes in these high-titer patients, the relationship is likely to be much more complex. Elderly patients with chronic herpes virus infections are known to develop progressive immune senescence (Almanzar et al., 2005; Khan et al., 2004; Khan et al., 2002; Pawelec and Derhovanessian, 2010), and the elevated antibody titers in some patients may simply be a consequence (or indicator) of their deteriorating cellular immunity.

Conversely, we have recently observed that anti-CMV IgG titers correlate very well with CMV-specific CD8 T-cells in mice (Cook et al., manuscript in preparation), so it is possible that patients with high CMV-specific IgG also have “inflated” CMV-specific T-memory. If these cells carry immunopathologic potential as previously discussed, then patients with memory inflation might prove to be those most predisposed to poor outcomes during critical illness (Figure 2). We therefore suggest that CMV-related risk in immunocompetent hosts should be more broadly defined, combining both underlying latent viral load and corresponding reactivation risk together with underlying host anti-CMV immune responses. Although it may seem intuitive that viral load and the immune response to it are inextricably intertwined, clear evidence linking either to disease in the critically ill have not been defined, and both seem promising avenues to explore in order to identify those most likely to benefit from therapy.

11.3. Barrier 3 – New approaches to prevent reactivation

The third major barrier to progress is the paucity and toxicity of currently available antiviral drugs. Critically ill patients are by definition the sickest patients in our hospitals, and available antiviral therapies have borderline or unacceptable safety profiles, especially for the 2 of 3 patients that will not benefit from such therapy. The toxicities of Ganciclovir, Foscarnet and Cidofovir are well known (reviewed in (Biron, 2006; Prichard and Kern, in press)), with Ganciclovir being least toxic and currently the leading choice of these agents. Although Valganciclovir may have a somewhat better safety profile, its oral formulation precludes early use during critical illness when many patients have ileus and unreliable intestinal absorption. Moreover, four of the five FDA approved drugs to treat CMV (Ganciclovir, Valganciclovir, Foscarnet and Cidofovir) all target the DNA polymerase and emergence of drug resistant strains (harboring a range of mutations in either the UL97 kinase or UL54 polymerase genes) is a significant problem (Biron, 2006; Gilbert et al., 2002). The fifth approved drug, Fomivirsen, is an antisense oligonucleotide against the HCMV - immediate early-1 protein and is licensed only for intraocular use.

Unfortunately, there appear to be few prospects in the pipeline, with only two of ten new antivirals recently reported to have anti-CMV activity (Dropulic and Cohen, 2010). One of the most promising was Maribavir, which showed potential in phase II clinical trials (Winston et al., 2008), but has since failed to show clinical efficacy for CMV prevention in phase III trials (<http://www.fiercebiotech.com/press-releases/viropharma-incorporated-vphm-reports-results-phase-3-clinical-trial-maribavir-bone-ma>). CMX-001 and AIC246 are candidates in phase II trials for CMV reactivation prevention (NCT00942305 and NCT01063829 respectively), but as such are realistically years away from availability (Dropulic and Cohen, 2010).

While an exhaustive review of future antivirals with anti-CMV potential is beyond the scope of this review, it is clear that there is a significant gap between need and available treatments that hopefully will be spanned in the near future. For now we must attempt to strike a balance between efficacy and toxicity with Ganciclovir, and hopefully this will favor efficacy as it has in transplant patients and our murine model (Cook et al., 2006b; Forster et al., 2010). If toxicity becomes an issue, the need for novel agents will become even more pressing. In addition, as suggested before, understanding how CMV injures immunocompetent patients might allow development of completely novel therapeutics to mitigate CMV-related risk and improve outcome during critical illness.

11.4. Barrier 4 – Lack of funding

Perhaps the biggest consequence of lack of pharmaceuticals in the pipeline is the consequent lack of funding for investigations in this area. Despite years of lobbying the pharmaceutical industry by numerous groups, without patent protected agents in the pipeline there has been limited interest in funding clinical trials. This is despite the fact that the market potential for critically ill patients is orders of magnitude larger than the transplant or HIV/AIDS patient populations. Most surprising to us is that companies with monitoring technology have not been more enthusiastic to support such studies, given that CMV-monitoring might play an integral role in determining treatment end points. This situation underscores the need for public funding of research in this area. Thankfully Boeckh et al have been persuasive enough to secure funding for the requisite first clinical trial, and we expect that this potential market may see a pause in development until their trial results become available.

12. Limitations

In addition to the barriers outlined above, there remain numerous other limitations in our understanding of herpes family viruses during critical illness. As previously acknowledged, it is possible that CMV reactivation is merely an indicator of immune compromise and illness severity and that the worsened outcomes are merely associations. For example do burn patients show the highest rates of reactivation because of the profound immune compromise that they suffer following their burn injury, with superimposed bacterial colonization/infection of their open burn wounds? Further, although we have chosen to focus on CMV in this review, humans are frequently infected with multiple herpes viruses during a lifetime, including most commonly herpes simplex (HSV) and Epstein-Barr (EBV) viruses. Similar to CMV, HSV reactivates in immunocompetent hosts during critical illness (Bruynseels et al., 2003; Camps et al., 2002; Cook et al., 2003; Cook et al., 1998; Cushing et al., 1993; Hayden et al., 1994; Kagan et al., 1985; Linssen et al., 2008; Luyt et al., 2007; Ong et al., 2004; Porteous et al., 1984; Schuller, 1994). Some of these HSV studies have shown associations with worse outcome similar to CMV (Linssen et al., 2008; Luyt et al., 2007; Ong et al., 2004), and pathogen versus bystander also remains very much a question for HSV (Simoons-Smit et al., 2006). EBV has not been well studied during critical illness, but has been suggested to reactivate during times of stress in immunocompetent hosts (Glaser et al., 1999; Glaser et al., 1994; Glaser et al., 1991). Human herpes virus-6 also appears to reactivate, but the data for consequences of such reactivations virus are far less complete (Razonable et al., 2002). Given the myriad combinations of just these four viruses, trying to understand individual contributions of each may become problematic; leaving carefully controlled animal models as an important adjunct to clinical studies.

Conclusion

It is clear that the majority of our immunocompetent population harbors latent CMV, and that reactivation occurs in $\sim 1/3^{\text{rd}}$ of them when they become critically ill. Considering that millions of patients become critically ill every year, the potential for work in this field to

significantly contribute to patient outcome is enormous. The Boeckh prophylaxis trial using ganciclovir represents a major first step, but it is clear that there are still major gaps in our understanding of CMV in these patients. Given the limitations inherent to both human subjects and animal models, continued traverse between bench and bedside will be required to close these most important gaps. It is our considered opinion that narrowing or closing these gaps will be imperative to continue moving this new field forward.

Acknowledgments

This work was partially supported by NIH grant R01GM066115.

References

- Adler SP. Human CMV vaccine trials: What if CMV caused a rash? *J Clin Virol.* 2008; 41:231–236. [PubMed: 18096431]
- Adler SP, Baggett J, McVoy M. Transfusion-associated cytomegalovirus infections in seropositive cardiac surgery patients. *Lancet.* 1985; 326:743–746. [PubMed: 2864484]
- Almanzar G, Schwaiger S, Jenewein B, Keller M, Herndler-Brandstetter D, Wurzner R, Schonitzer D, Grubeck-Loebenstien B. Long-Term Cytomegalovirus Infection Leads to Significant Changes in the Composition of the CD8+ T-Cell Repertoire, Which May Be the Basis for an Imbalance in the Cytokine Production Profile in Elderly Persons. *J Virol.* 2005; 79:3675–3683. [PubMed: 15731261]
- Andrews DM, Estcourt MJ, Andoniou CE, Wikstrom ME, Khong A, Voigt V, Fleming P, Tabarias H, Hill GR, van der Most RG, Scalzo AA, Smyth MJ, Degli-Esposti MA. Innate immunity defines the capacity of antiviral T cells to limit persistent infection. *The Journal of Experimental Medicine.* 2010
- Babel N, Brestrich G, Gondek LP, Sattler A, Wlodarski MW, Poliak N, Bethke N, Thiel A, Hammer MH, Reinke P, Maciejewski JP. Clonotype Analysis of Cytomegalovirus-Specific Cytotoxic T Lymphocytes. *J Am Soc Nephrol, ASN.* 2008; 2007:111225.
- Babić M, Pyzik M, Zafirova B, Mitrović M, Butorac V, Lanier LL, Krmpotić A, Vidal SM, Jonjić S. Cytomegalovirus immunoevasin reveals the physiological role of “missing self” recognition in natural killer cell dependent virus control in vivo. *The Journal of Experimental Medicine.* 2010; 207:2663–2673. [PubMed: 21078887]
- Balthesen M, Messerle M, Reddehase MJ. Lungs are a major organ site of cytomegalovirus latency and recurrence. *J Virol.* 1993; 67:5360–5366. [PubMed: 8394453]
- Barry SM, Johnson MA, Janossy G. Cytopathology or immunopathology? The puzzle of cytomegalovirus pneumonitis revisited. *Bone Marrow Transplantation.* 2000; 26:591–597. [PubMed: 11035367]
- Biron KK. Antiviral drugs for cytomegalovirus diseases. *Antiviral Res.* 2006; 71:154–163. [PubMed: 16765457]
- Bolovan-Fritts CA, Trout RN, Spector SA. High T-cell response to human cytomegalovirus induces chemokine-mediated endothelial cell damage. *Blood.* 2007; 110:1857–1863. [PubMed: 17519388]
- Bruynseels P, Jorens PG, Demey HE, Goossens H, Pattyn SR, Elseviers MM, Weyler J, Bossaert LL, Mentens Y, Ieven M. Herpes simplex virus in the respiratory tract of critical care patients: a prospective study. *Lancet.* 2003; 362:1536–1541. [PubMed: 14615108]
- Camps K, Jorens P, Demey H, Pattyn S, Ieven M. Clinical Significance of Herpes Simplex Virus in the Lower Respiratory Tract of Critically Ill Patients. *European Journal of Clinical Microbiology & Infectious Diseases.* 2002; 21:758–759.
- Cannon MJ, Openshaw PJ, Askonas BA. Cytotoxic T cells clear virus but augment lung pathology in mice infected with respiratory syncytial virus. *J Exp Med.* 1988; 168:1163–1168. [PubMed: 3262705]
- Chen HD, Fraire AE, Joris I, Brehm MA, Welsh RM, Selin LK. Memory CD8+ T cells in heterologous antiviral immunity and immunopathology in the lung. *Nat Immunol.* 2001; 2:1067–1076. [PubMed: 11668342]

- Cheung KS, Lang DJ. Transmission and activation of cytomegalovirus with blood transfusion: a mouse model. *J Infect Dis.* 1977; 135:841–845. [PubMed: 192814]
- Chiche L, Forel JM, Roch A, Guervilly C, Pauly V, Allardet-Servent J, Gannier M, Zandotti C, Papazian L. Active Cytomegalovirus infection is common in mechanically ventilated medical intensive care unit patients. *Crit Care Med.* 2009; 37:1850–1857. [PubMed: 19384219]
- Chilet M, Aguilar G, Benet I, Belda J, Tormo N, Carbonell JA, Clari MA, Costa E, Navarro D. Virological and immunological features of active cytomegalovirus infection in nonimmunosuppressed patients in a surgical and trauma intensive care unit. *J Med Virol.* 2010; 82:1384–1391. [PubMed: 20572085]
- Collins T, Pomeroy C, Jordan MC. Detection of latent cytomegalovirus DNA in diverse organs of mice. *J Infect Dis.* 1993; 168:725–729. [PubMed: 8394863]
- Cook C. Cytomegalovirus reactivation and mortality during critical illness: A \$64,000 question. *Crit Care Med.* 2009; 37:2475–2476. [PubMed: 19609119]
- Cook C, Zhang X, McGuinness B, Lahm M, Sedmak D, Ferguson R. Intra-abdominal Bacterial Infection Reactivates Latent Pulmonary Cytomegalovirus in Immunocompetent Mice. *J Infect Dis.* 2002; 185:1395–1400. [PubMed: 11992273]
- Cook CH. Cytomegalovirus Reactivation in “Immunocompetent” Patients: A Call for Scientific Prophylaxis. *J Infect Dis.* 2007; 196:1273–1275. [PubMed: 17922387]
- Cook CH, Martin LC, Yenchar JK, Lahm MC, McGuinness B, Davies EA, Ferguson RM. Occult herpes family viral infections are endemic in critically ill surgical patients. *Crit Care Med.* 2003; 31:1923–1929. [PubMed: 12847384]
- Cook CH, Trgovcich J, Zimmerman PD, Zhang Y, Sedmak DD. Lipopolysaccharide, Tumor Necrosis Factor Alpha, or Interleukin-1{beta} Triggers Reactivation of Latent Cytomegalovirus in Immunocompetent Mice. *J Virol.* 2006a; 80:9151–9158. [PubMed: 16940526]
- Cook CH, Yenchar JK, Kraner TO, Davies EA, Ferguson RM. Occult herpes family viruses may increase mortality in critically ill surgical patients. *Am J Surg.* 1998; 176:357–360. [PubMed: 9817255]
- Cook CH, Zhang Y, Sedmak DD, Martin LC, Jewell S, Ferguson RM. Pulmonary cytomegalovirus reactivation causes pathology in immunocompetent mice. *Crit Care Med.* 2006b; 34:842–849. [PubMed: 16521279]
- Curtsinger LJ, Cheadle WG, Hershman MJ, Cost K, Polk J, Hiram C. Association of cytomegalovirus infection with increased morbidity is independent of transfusion. *The American Journal of Surgery.* 1989; 158:606–611.
- Cushing D, Elliot S, Caplan E, Batlas S, Sridhara R, Wade J. Herpes Simplex Virus and Cytomegalovirus Excretion Associated with Increased Ventilator Days in Trauma Patients. *Journal of Trauma.* 1993; 25:161.
- Desachy A, Ranger-Rogez S, Francois B, Venot C, Traccard I, Gastinne H, Denis F, Vignon P. Reactivation of human herpesvirus type 6 in multiple organ failure syndrome. *Clin Infect Dis.* 2001; 32:197–203. [PubMed: 11170908]
- Döcke WD, Kiessling C, Worm M, Friedrich M, Pruss A, Weitz M, Prösch S, Kern F, Volk HD, Sterry W, Asadullah K. Subclinical activation of latent cytomegalovirus (CMV) infection and anti-CMV immune response in patients with atopic dermatitis. *Br J Dermatol.* 2003; 148:954–963. [PubMed: 12786826]
- Docke WD, Prosch S, Fietze E, Kimel V, Zuckermann H, Klug C, Syrbe U, Kruger DH, von Baehr R, Volk HD. Cytomegalovirus reactivation and tumour necrosis factor. *Lancet.* 1994; 343:268–269. [PubMed: 7905100]
- Domart Y, Trouillet JL, Fagon JY, Chastre J, Brun-Vezinet F, Gibert C. Incidence and morbidity of cytomegalovirus infection in patients with mediastinitis following cardiac surgery [see comments]. *Chest.* 1990; 97:18–22. [PubMed: 2153065]
- Drew WL, Miner RC. Transfusion-related cytomegalovirus infection following noncardiac surgery. *JAMA.* 1982; 247:2389–2391. [PubMed: 6279896]
- Dropulic LK, Cohen JI. Update on new antivirals under development for the treatment of double-stranded DNA virus infections. *Clin Pharmacol Ther.* 2010; 88:610–619. [PubMed: 20881959]

- Eisenfeld L, Silver H, McLaughlin J, Klevjer-Anderson P, Mayo D, Anderson J, Herson V, Krause P, Savidakis J, Lazar A. Prevention of transfusion-associated cytomegalovirus infection in neonatal patients by the removal of white cells from blood [see comments]. *Transfusion*. 1992; 32:205–209. [PubMed: 1313609]
- Fietze E, Prosch S, Reinke P, Stein J, Docke WD, Staffa G, Loning S, Devaux S, Emmrich F, von Baehr R. Cytomegalovirus infection in transplant recipients. The role of tumor necrosis factor. *Transplantation*. 1994; 58:675–680. [PubMed: 7940686]
- Forster MR, Bickerstaff AA, Wang JJ, Zimmerman PD, Cook CH. Allogeneic Stimulation Causes Transcriptional Reactivation of Latent Murine Cytomegalovirus. *Transplant Proc*. 2009; 41:1927–1931. [PubMed: 19545758]
- Forster MR, Trgovcich J, Zimmerman P, Chang A, Miller C, Klenerman P, Cook CH. Antiviral prevention of sepsis induced cytomegalovirus reactivation in immunocompetent mice. *Antiviral Res*. 2010; 85:496–503. [PubMed: 20004216]
- Gaytant MA, Steegers EA, Semmekrot BA, Merkus HM, Galama JM. Congenital cytomegalovirus infection: review of the epidemiology and outcome. *Obstet Gynecol Surv*. 2002; 57:245–256. [PubMed: 11961482]
- Gilbert C, Bestman-Smith J, Boivin G. Resistance of herpesviruses to antiviral drugs: clinical impacts and molecular mechanisms. *Drug Resist Updat*. 2002; 5:88–114. [PubMed: 12135584]
- Gillespie GM, Wills MR, Appay V, O'Callaghan C, Murphy M, Smith N, Sissons P, Rowland-Jones S, Bell JI, Moss PA. Functional heterogeneity and high frequencies of cytomegalovirus-specific CD8(+) T lymphocytes in healthy seropositive donors. *J Virol*. 2000; 74:8140–8150. [PubMed: 10933725]
- Glaser R, Friedman SB, Smyth J, Ader R, Bijur P, Brunell P, Cohen N, Krilov LR, Lifrak ST, Stone A, Toffler P. The differential impact of training stress and final examination stress on herpesvirus latency at the United States Military Academy at West Point. *Brain, behavior, and immunity*. 1999; 13:240–251.
- Glaser R, Pearl DK, Kiecolt-Glaser JK, Malarkey WB. Plasma cortisol levels and reactivation of latent Epstein-Barr virus in response to examination stress. *Psychoneuroendocrinology*. 1994; 19:765–772. [PubMed: 7991763]
- Glaser R, Pearson GR, Jones JF, Hillhouse J, Kennedy S, Mao H, Kiecolt-Glaser JK. Stress-related activation of Epstein-Barr virus. *Brain, Behavior, and Immunity*. 1991; 5:219–232.
- Gonczol E, Danczig E, Boldogh I, Toth T, Vaczi L. In vivo model for the acute, latent and reactivated phases of cytomegalovirus infection. *Acta Microbiologica Hungarica*. 1985; 32:39–47. [PubMed: 2994350]
- Gor D, Sabin C, Prentice HG, Vyas N, Man S, Griffiths PD, Emery VC. Longitudinal fluctuations in cytomegalovirus load in bone marrow transplant patients: relationship between peak virus load, donor/recipient serostatus, acute GVHD and CMV disease. *Bone Marrow Transplantation*. 1998; 21:597–605. [PubMed: 9543064]
- Gorman S, Harvey NL, Moro D, Lloyd ML, Voigt V, Smith LM, Lawson MA, Shellam GR. Mixed infection with multiple strains of murine cytomegalovirus occurs following simultaneous or sequential infection of immunocompetent mice. *J Gen Virol*. 2006; 87:1123–1132. [PubMed: 16603512]
- Gorzer I, Guelly C, Trajanoski S, Puchhammer-Stockl E. Deep Sequencing Reveals Highly Complex Dynamics of Human Cytomegalovirus Genotypes in Transplant Patients over Time. *J Virol*. 2010; 84:7195–7203. [PubMed: 20463084]
- Griffiths PD. Cytomegalovirus in intensive care. *Reviews in Medical Virology*. 2010; 20:1–3. [PubMed: 20041439]
- Grundy JE, Shanley JD, Griffiths PD. Is cytomegalovirus interstitial pneumonitis in transplant recipients an immunopathological condition? *Lancet*. 1987; 2:996–999. [PubMed: 2889962]
- Halpern NA, Pastores SM. Critical care medicine in the United States 2000–2005: an analysis of bed numbers, occupancy rates, payer mix, and costs. *Crit Care Med*. 2010; 38:65–71. [PubMed: 19730257]

- Hamilton JR, Overall JC, Glasgow LA. Synergistic effect on mortality in mice with murine cytomegalovirus and *Pseudomonas aeruginosa*, *Staphylococcus aureus*, or *Candida albicans* infections. *Infect Immun*. 1976; 14:982–989. [PubMed: 186411]
- Hamilton JR, Overall JC Jr. Synergistic infection with murine cytomegalovirus and *Pseudomonas aeruginosa* in mice. *J Infect Dis*. 1978; 137:775–782. [PubMed: 207792]
- Hansen SG, Powers CJ, Richards R, Ventura AB, Ford JC, Siess D, Axthelm MK, Nelson JA, Jarvis MA, Picker LJ, Fruh K. Evasion of CD8+ T Cells Is Critical for Superinfection by Cytomegalovirus. *Science*. 2010; 328:102–106. [PubMed: 20360110]
- Hayden FG, Himel HN, Hegggers JP. Herpesvirus infections in burn patients. *Chest*. 1994; 106:15S–21S. discussion 34S–35S. [PubMed: 8020328]
- Hebart H, Einsele H. Diagnosis and treatment of cytomegalovirus infection. *Current Opinion in Hematology*. 1998; 5:483–487. [PubMed: 9814660]
- Heininger A, Jahn G, Engel C, Notheisen T, Unertl K, Hamprecht K. Human cytomegalovirus infections in nonimmunosuppressed critically ill patients. *Crit Care Med*. 2001; 29:541–547. [PubMed: 11373417]
- Hillyer CD, Emmens RK, Zago-Novaretti M, Berkman EM. Methods for the reduction of transfusion-transmitted cytomegalovirus infection: filtration versus the use of seronegative donor units. *Transfusion*. 1994; 34:929–934. [PubMed: 7940668]
- Ho, M. *Cytomegalovirus Biology and Infection*. 2. Plenum Publishing Corporation; 1982.
- Holtappels R, Simon CO, Munks MW, Thomas D, Deegen P, Kuhnappel B, Daubner T, Emde SF, Podlech J, Grzimek NKA, Oehrlein-Karpi SA, Hill AB, Reddehase MJ. Subdominant CD8 T-Cell Epitopes Account for Protection against Cytomegalovirus Independent of Immunodomination. *J Virol*. 2008; 82:5781–5796. [PubMed: 18367531]
- Holtappels R, Thomas D, Podlech J, Reddehase MJ. Two Antigenic Peptides from Genes m123 and m164 of Murine Cytomegalovirus Quantitatively Dominate CD8 T-Cell Memory in the H-2d Haplotype. *J Virol*. 2002; 76:151–164. [PubMed: 11739681]
- Hummel M, Abecassis MM. A model for reactivation of CMV from latency. *J Clin Virol*. 2002; 25(Suppl 2):S123–136. [PubMed: 12361763]
- Jaber S, Chanques G, Borry J, Souche B, Verdier R, Perrigault PF, Eledjam JJ. Cytomegalovirus Infection in Critically Ill Patients: Associated Factors and Consequences. *Chest*. 2005; 127:233–241. [PubMed: 15653989]
- Jackson SE, Mason GM, Wills MR. Human cytomegalovirus immunity and immune evasion. *Virus Res*. in press. In Press, Uncorrected Proof.
- Kagan RJ, Naraqi S, Matsuda T, Jonasson OM. Herpes simplex virus and cytomegalovirus infections in burned patients. *J Trauma*. 1985; 25:40–45. [PubMed: 2981325]
- Kalil AC, Florescu DF. Prevalence and mortality associated with cytomegalovirus infections in non-immunosuppressed ICU patients. *Crit Care Med*. 2009; 37:2350–2358. [PubMed: 19531944]
- Kalil AC, Sun J, Florescu DF. The importance of detecting cytomegalovirus infections in studies evaluating new therapies for severe sepsis. *Crit Care Med*. 2010; 38:S663–S667. 10.1097/CCM.1090b1013e3181f20319 [PubMed: 21164412]
- Kantor GL, Goldberg LS, Johnson BJ, Derechin MM, Barnett EV. Immunologic abnormalities induced by postperfusion cytomegalovirus infection. *Ann Intern Med*. 1970; 73:553–558. [PubMed: 4319077]
- Karrer U, Sierro S, Wagner M, Oxenius A, Hengel H, Koszinowski UH, Phillips RE, Klenerman P. Memory Inflation: Continuous Accumulation of Antiviral CD8+ T Cells Over Time. *J Immunol*. 2003; 170:2022–2029. [PubMed: 12574372]
- Karrer U, Wagner M, Sierro S, Oxenius A, Hengel H, Dumrese T, Freigang S, Koszinowski UH, Phillips RE, Klenerman P. Expansion of Protective CD8+ T-Cell Responses Driven by Recombinant Cytomegaloviruses. *J Virol*. 2004; 78:2255–2264. [PubMed: 14963122]
- Kern F, Bunde T, Faulhaber N, Kiecker F, Khatamzas E, Rudawski IM, Pruss A, Gratama JW, Volkmer-Engert R, Ewert R, Reinke P, Volk HD, Picker Louis J. Cytomegalovirus (CMV) Phosphoprotein 65 Makes a Large Contribution to Shaping the T Cell Repertoire in CMV-Exposed Individuals. *The Journal of Infectious Diseases*. 2002; 185:1709–1716. [PubMed: 12085315]

- Kern F, Faulhaber N, Frömmel C, Khatamzas E, Prösch S, Schönemann C, Kretzschmar I, Volkmer-Engert R, Volk HD, Reinke P. Analysis of CD8 T cell reactivity to cytomegalovirus using protein-spanning pools of overlapping pentadecapeptides. *Eur J Immunol.* 2000; 30:1676–1682. [PubMed: 10898504]
- Khan N, Best D, Bruton R, Nayak L, Rickinson AB, Moss PAH. T Cell Recognition Patterns of Immunodominant Cytomegalovirus Antigens in Primary and Persistent Infection. *J Immunol.* 2007; 178:4455–4465. [PubMed: 17372003]
- Khan N, Hislop A, Gudgeon N, Cobbold M, Khanna R, Nayak L, Rickinson AB, Moss PA. Herpesvirus-specific CD8 T cell immunity in old age: cytomegalovirus impairs the response to a coresident EBV infection. *J Immunol.* 2004; 173:7481–7489. [PubMed: 15585874]
- Khan N, Shariff N, Cobbold M, Bruton R, Ainsworth JA, Sinclair AJ, Nayak L, Moss PAH. Cytomegalovirus Seropositivity Drives the CD8 T Cell Repertoire Toward Greater Clonality in Healthy Elderly Individuals. *J Immunol.* 2002; 169:1984–1992. [PubMed: 12165524]
- Koffron AJ, Hummel M, Patterson BK, Yan S, Kaufman DB, Fryer JP, Stuart FP, Abecassis MI. Cellular localization of latent murine cytomegalovirus. *J Virol.* 1998; 72:95–103. [PubMed: 9420204]
- Kurz S, Steffens HP, Mayer A, Harris JR, Reddehase MJ. Latency versus persistence or intermittent recurrences: evidence for a latent state of murine cytomegalovirus in the lungs. *J Virol.* 1997; 71:2980–2987. [PubMed: 9060657]
- Kutza AS, Muhl E, Hackstein H, Kirchner H, Bein G. High incidence of active cytomegalovirus infection among septic patients. *Clin Infect Dis.* 1998; 26:1076–1082. [PubMed: 9597229]
- Lawson CM, Grundy JE, Shellam GR. Antibody responses to murine cytomegalovirus in genetically resistant and susceptible strains of mice. *J Gen Virol.* 1988; 69:1987–1998. [PubMed: 2841411]
- Lemmermann NAW, Böhm V, Holtappels R, Reddehase MJ. In vivo impact of cytomegalovirus evasion of CD8 T-cell immunity: facts and thoughts based on murine models. *Virus Res.* in press. In Press, Accepted Manuscript.
- Lenac T, Arapović J, Traven L, Krmpotić A, Jonjić S. Murine cytomegalovirus regulation of NKG2D ligands. *Medical Microbiology and Immunology.* 2008; 197:159–166. [PubMed: 18259774]
- Lerner PI, Sampliner JE. Transfusion-associated cytomegalovirus mononucleosis. *Ann Surg.* 1977; 185:406–410. [PubMed: 190955]
- Limaye AP, Kirby KA, Rubinfeld GD, Leisenring WM, Bulger EM, Neff MJ, Gibran NS, Huang ML, Santo Hayes TK, Corey L, Boeckh M. Cytomegalovirus Reactivation in Critically Ill Immunocompetent Patients. *JAMA.* 2008; 300:413–422. [PubMed: 18647984]
- Linssen CFM, Jacobs JA, Stelma FF, Mook WNKA, Terporten P, Vink C, Drent M, Bruggeman CA, Smismans A. Herpes simplex virus load in bronchoalveolar lavage fluid is related to poor outcome in critically ill patients. *Intensive Care Medicine.* 2008; 34:2202–2209. [PubMed: 18679655]
- Lopez C, Simmons RL, Mauer SM, Najarian JS, Good RA. Association of renal allograft rejection with virus infections. *The American Journal of Medicine.* 1974; 56:280–289. [PubMed: 4360465]
- Luyt C-E, Combes A, Deback C, Aubriot-Lorton M-H, Nieszkowska A, Trouillet J-L, Capron F, Agut H, Gibert C, Chastre J. Herpes Simplex Virus Lung Infection in Patients Undergoing Prolonged Mechanical Ventilation. *Am J Respir Crit Care Med.* 2007; 175:935–942. [PubMed: 17234903]
- Munks MW, Cho KS, Pinto AK, Sierro S, Klenerman P, Hill AB. Four Distinct Patterns of Memory CD8 T Cell Responses to Chronic Murine Cytomegalovirus Infection. *J Immunol.* 2006a; 177:450–458. [PubMed: 16785542]
- Munks MW, Gold MC, Zajac AL, Doom CM, Morello CS, Spector DH, Hill AB. Genome-Wide Analysis Reveals a Highly Diverse CD8 T Cell Response to Murine Cytomegalovirus. *J Immunol.* 2006b; 176:3760–3766. [PubMed: 16517745]
- Musiani M, Zerbini M, Zauli D, Cometti G, La Placa M. Impairment of cytomegalovirus and host balance in elderly subjects. *J Clin Pathol.* 1988; 41:722–725. [PubMed: 2842379]
- Nagington J. Cytomegalovirus Antibody Production in Renal Transplant Patients. *The Journal of Hygiene.* 1971; 69:645–660. [PubMed: 4332511]
- Olsson J, Wikby A, Johansson B, Löfgren S, Nilsson B-O, Ferguson FG. Age-related change in peripheral blood T-lymphocyte subpopulations and cytomegalovirus infection in the very old: the

- Swedish longitudinal OCTO immune study. *Mechanisms of Ageing and Development*. 2001; 121:187–201. [PubMed: 11164473]
- Ong GM, Lowry K, Mahajan S, Wyatt DE, Simpson C, O'Neill HJ, McCaughey C, Coyle PV. Herpes simplex type 1 shedding is associated with reduced hospital survival in patients receiving assisted ventilation in a tertiary referral intensive care unit. *J Med Virol*. 2004; 72:121–125. [PubMed: 14635019]
- Osawa R, Singh N. Cytomegalovirus infection in critically ill patients: a systematic review. *Critical Care*. 2009; 13:R68. [PubMed: 19442306]
- Ouyang Q, Wagner WM, Wikby A, Walter S, Aubert G, Dodi AI, Travers P, Pawelec G. Large Numbers of Dysfunctional CD8+ T Lymphocytes Bearing Receptors for a Single Dominant CMV Epitope in the Very Old. *Journal of Clinical Immunology*. 2003; 23:247–257. [PubMed: 12959217]
- Papazian L, Doddoli C, Chetaille B, Gernez Y, Thirion X, Roch A, Donati Y, Bonnetty M, Zandotti C, Thomas P. A contributive result of open-lung biopsy improves survival in acute respiratory distress syndrome patients. *Crit Care Med*. 2007; 35:755–762. [PubMed: 17255856]
- Papazian L, Thomas P, Bregeon F, Garbe L, Zandotti C, Saux P, Gaillat F, Drancourt M, Auffray JP, Gouin F. Open-lung biopsy in patients with acute respiratory distress syndrome. *Anesthesiology*. 1998; 88:935–944. [PubMed: 9579502]
- Pawelec G, Derhovanesian E. Role of CMV in immune senescence. *Virus Res*. 2010 In Press, Uncorrected Proof.
- Polic B, Hengel H, Krmpotic A, Trgovcich J, Pavic I, Luccaroni P, Jonjic S, Koszinowski UH. Hierarchical and redundant lymphocyte subset control precludes cytomegalovirus replication during latent infection. *J Exp Med*. 1998; 188:1047–1054. [PubMed: 9743523]
- Porteoc C, Bradley JA, Hamilton DN, Ledingham IM, Clements GB, Robinson CG. Herpes simplex virus reactivation in surgical patients. *Crit Care Med*. 1984; 12:626–628. [PubMed: 6086234]
- Prichard MN, Kern ER. The Search for New Therapies for Human Cytomegalovirus Infections. *Virus Res*. in press. In Press, Accepted Manuscript.
- Prosch S, Staak K, Stein J, Liebenthal C, Stamminger T, Volk HD, Kruger DH. Stimulation of the Human Cytomegalovirus IE Enhancer/Promoter in HL-60 Cells by TNF α Is Mediated via Induction of NF-kappaB. *Virology*. 1995; 208:197–206. [PubMed: 11831701]
- Prosch S, Wendt CE, Reinke P, Priemer C, Oppert M, Kruger DH, Volk HD, Docke WD. A novel link between stress and human cytomegalovirus (HCMV) infection: sympathetic hyperactivity stimulates HCMV activation. *Virology*. 2000; 272:357–365. [PubMed: 10873779]
- Pyzik M, Gendron-Pontbriand E-M, Fodil-Cornu N, Vidal S. Self or nonself? That is the question: sensing of cytomegalovirus infection by innate immune receptors. *Mammalian Genome*. 2010:1–13.
- Rawlinson WD, Farrell HE, Barrell BG. Analysis of the complete DNA sequence of murine cytomegalovirus. *J Virol*. 1996; 70:8833–8849. [PubMed: 8971012]
- Razonable RR, Fanning C, Brown RA, Espy MJ, Rivero A, Wilson J, Kremers W, Smith TF, Paya CV. Selective reactivation of human herpesvirus 6 variant a occurs in critically ill immunocompetent hosts.[see comment]. *J Infect Dis*. 2002; 185:110–113. [PubMed: 11756989]
- Reddehase MJ, Balthesen M, Rapp M, Jonjic S, Pavic I, Koszinowski UH. The conditions of primary infection define the load of latent viral genome in organs and the risk of recurrent cytomegalovirus disease. *J Exp Med*. 1994; 179:185–193. [PubMed: 8270864]
- Reddehase MJ, Koszinowski UH. Significance of herpesvirus immediate early gene expression in cellular immunity to cytomegalovirus infection. *Nature*. 1984; 312:369–371. [PubMed: 6095095]
- Reddehase MJ, Podlech J, Grzimek NK. Mouse models of cytomegalovirus latency: overview. *J Clin Virol*. 2002; 25(Suppl 2):S23–36. [PubMed: 12361754]
- Reddehase MJ, Weiland F, Munch K, Jonjic S, Luske A, Koszinowski UH. Interstitial murine cytomegalovirus pneumonia after irradiation: characterization of cells that limit viral replication during established infection of the lungs. *J Virol*. 1985; 55:264–273. [PubMed: 2991554]
- Reeves, MB.; Sinclair, JH. Human Cytomegalovirus. In: Shenk, T.; Stinski, MF., editors. *Current Topics in Microbiology and Immunology*. Springer-Verlag; Heidelberg: 2008. p. 297-313.

- Roberts ET, Haan MN, Dowd JB, Aiello AE. Cytomegalovirus Antibody Levels, Inflammation, and Mortality Among Elderly Latinos Over 9 Years of Follow-up. *American Journal of Epidemiology*. 2010; 172:363–371. [PubMed: 20660122]
- Rolle A, Olweus J. Dendritic cells in cytomegalovirus infection: viral evasion and host countermeasures. *APMIS*. 2009; 117:413–426. [PubMed: 19400865]
- Ross, Shannon A.; Arora, N.; Novak, Z.; Fowler, Karen B.; Britt, William J.; Boppana, Suresh B. Cytomegalovirus Reinfections in Healthy Seroimmune Women. *The Journal of Infectious Diseases*. 2010; 201:386–389. [PubMed: 20039807]
- Salem HK, Ranjzad P, Driessen A, Appleby CE, Heagerty AM, Kingston PA. Beta-Adrenoceptor Blockade Markedly Attenuates Transgene Expression From Cytomegalovirus Promoters Within the Cardiovascular System. *Arterioscler Thromb Vasc Biol*. 2006; 26:2267–2274. [PubMed: 16888240]
- Schrier RD, Nelson JA, Oldstone MB. Detection of human cytomegalovirus in peripheral blood lymphocytes in a natural infection. *Science*. 1985; 230:1048–1051. [PubMed: 2997930]
- Schuller D. Lower respiratory tract reactivation of herpes simplex virus. Comparison of immunocompromised and immunocompetent hosts. *Chest*. 1994; 106:3S–7S. discussion 34S–35S. [PubMed: 8020331]
- Sierro S, Rothkopf R, Klenerman P. Evolution of diverse antiviral CD8+ T cell populations after murine cytomegalovirus infection. *Eur J Immunol*. 2005; 35:1113–1123. [PubMed: 15756645]
- Simmons RL, Matas AJ, Rattazzi LC, Balfour HH Jr, Howard JR, Najarian JS. Clinical characteristics of the lethal cytomegalovirus infection following renal transplantation. *Surgery*. 1977; 82:537–546. [PubMed: 199956]
- Simon CO, Holtappels R, Tervo H-M, Bohm V, Daubner T, Oehrlein-Karpi SA, Kuhnappel B, Renzaho A, Strand D, Podlech J, Reddehase MJ, Grzimek NKA. CD8 T Cells Control Cytomegalovirus Latency by Epitope-Specific Sensing of Transcriptional Reactivation. *J Virol*. 2006; 80:10436–10456. [PubMed: 16928768]
- Simoons-Smit AM, Kraan EM, Beishuizen A, Strack van Schijndel RJ, Vandenbroucke-Grauls CM. Herpes simplex virus type 1 and respiratory disease in critically-ill patients: Real pathogen or innocent bystander? *Clinical Microbiology & Infection*. 2006; 12:1050–1059. [PubMed: 17002604]
- Soderberg-Naucler C. Does cytomegalovirus play a causative role in the development of various inflammatory diseases and cancer? *J Intern Med*. 2006; 259:219–246. [PubMed: 16476101]
- Soderberg-Naucler C, Fish KN, Nelson JA. Reactivation of latent human cytomegalovirus by allogeneic stimulation of blood cells from healthy donors. *Cell*. 1997; 91:119–126. [PubMed: 9335340]
- Stadler, Laura P.; Bernstein, David I.; Callahan, ST.; Ferreira, J.; Gorgone Simone, Gina A.; Edwards, Kathryn M.; Stanberry, Lawrence R.; Rosenthal, Susan L. Seroprevalence of Cytomegalovirus (CMV) and Risk Factors for Infection in Adolescent Males. *Clin Infect Dis*. 2010; 51:e76–e81. [PubMed: 20936976]
- Stanberry, Lawrence R.; Rosenthal, Susan L.; Mills, L.; Succop, Paul A.; Biro, Frank M.; Morrow, Rhoda A.; Bernstein, David I. Longitudinal Risk of Herpes Simplex Virus (HSV) Type 1, HSV Type 2, and Cytomegalovirus Infections among Young Adolescent Girls. *Clin Infect Dis*. 2004; 39:1433–1438. [PubMed: 15546077]
- Staras SAS, Dollard SC, Radford KW, Dana Flanders W, Pass RF, Cannon MJ. Seroprevalence of Cytomegalovirus Infection in the United States, 1988–1994. *Clin Infect Dis*. 2006; 43:1143–1151. [PubMed: 17029132]
- Stein J, Volk HD, Liebenenthal C, Kruger DH, Prosch S. Tumour necrosis factor alpha stimulates the activity of the human cytomegalovirus major immediate early enhancer/promoter in immature monocytic cells. *J Gen Virol*. 1993; 74:2333–2338. [PubMed: 8245850]
- Steininger C. Clinical relevance of cytomegalovirus infection in patients with disorders of the immune system. *Clinical Microbiology and Infection*. 2007; 13:953–963. [PubMed: 17803749]
- Stephan F, Meharzi D, Ricci S, Fajac A, Clergue F, Bernaudin JF. Evaluation by polymerase chain reaction of cytomegalovirus reactivation in intensive care patients under mechanical ventilation. *Intensive Care Medicine*. 1996; 22:1244–1249. [PubMed: 9120120]

- Stevens DP, Barker LF, Ketcham AS, Meyer HM Jr. Asymptomatic cytomegalovirus infection following blood transfusion in tumor surgery. *JAMA*. 1970; 211:1341–1344. [PubMed: 4312797]
- Strandberg TE, Pitkala KH, Tilvis RS. Cytomegalovirus antibody level and mortality among community-dwelling older adults with stable cardiovascular disease. *JAMA*. 2009; 301:380–382. [PubMed: 19176439]
- Sylwester AW, Mitchell BL, Edgar JB, Taormina C, Pelte C, Ruchti F, Sleath PR, Grabstein KH, Hosken NA, Kern F, Nelson JA, Picker LJ. Broadly targeted human cytomegalovirus-specific CD4+ and CD8+ T cells dominate the memory compartments of exposed subjects. *J Exp Med*. 2005; 202:673–685. [PubMed: 16147978]
- Tanaka K, Koga Y, Kimura G, Nomoto K. Pathogenesis and therapy of cytomegalovirus (CMV)-associated lung disease following anti-CD3 monoclonal antibody treatment in mice with persistent murine CMV in the salivary glands. *Transplant Proc*. 1995; 27:499–500. [PubMed: 7879076]
- Tanaka K, Koga Y, Lu YY, Zhang XY, Wang Y, Kimura G, Nomoto K. Murine cytomegalovirus-associated pneumonitis in the lungs free of the virus. *J Clin Invest*. 1994; 94:1019–1025. [PubMed: 8083343]
- Thomas AC, Forster MR, Bickerstaff AA, Zimmerman PD, Wing BA, Trgovcich J, Bergdall VK, Klenerman P, Cook CH. Occult cytomegalovirus in vivarium-housed mice may influence transplant allograft acceptance. *Transplant Immunology*. 2010; 23:86–91. [PubMed: 20307665]
- Toorkey CB, Carrigan DR. Immunohistochemical detection of an immediate early antigen of human cytomegalovirus in normal tissues. *J Infect Dis*. 1989; 160:741–751. [PubMed: 2553823]
- Toro AI, Ossa J. PCR activity of CMV in healthy CMV-seropositive individuals: does latency need redefinition? *Res Virol*. 1996; 147:233–238. [PubMed: 8837231]
- Vescovini R, Biasini C, Fagnoni FF, Telera AR, Zanlari L, Pedrazzoni M, Bucci L, Monti D, Medici MC, Chezzi C, Franceschi C, Sansoni P. Massive Load of Functional Effector CD4+ and CD8+ T Cells against Cytomegalovirus in Very Old Subjects. *J Immunol*. 2007; 179:4283–4291. [PubMed: 17785869]
- von Muller L, Klemm A, Durmus N, Weiss M, Suger-Wiedeck H, Schneider M, Hampl W, Mertens T. Cellular Immunity and Active Human Cytomegalovirus Infection in Patients with Septic Shock. *J Infect Dis*. 2007; 196:1288–1295. [PubMed: 17922392]
- von Muller L, Klemm A, Weiss M, Schneider M, Suger-Wiedeck H, Durmus N, Hampl W, Mertens T. Active cytomegalovirus infection in patients with septic shock. *Emerging Infectious Diseases*. 2006; 12:1517–1522. [PubMed: 17176565]
- von Muller L, Mertens T. Human cytomegalovirus infection and antiviral immunity in septic patients without canonical immunosuppression. *Medical Microbiology and Immunology*. 2008; 197:75–82. [PubMed: 18327609]
- Walton SM, Wyrsh P, Munks MW, Zimmermann A, Hengel H, Hill AB, Oxenius A. The Dynamics of Mouse Cytomegalovirus-Specific CD4 T Cell Responses during Acute and Latent Infection. *J Immunol*. 2008; 181:1128–1134. [PubMed: 18606665]
- Wang GC, Kao WHL, Murakami P, Xue Q-L, Chiou RB, Detrick B, McDyer JF, Semba RD, Casolaro V, Walston JD, Fried LP. Cytomegalovirus Infection and the Risk of Mortality and Frailty in Older Women: A Prospective Observational Cohort Study. *Am J Epidemiol*. 2010; 171:1144–1152. [PubMed: 20400465]
- Weinberg A, Hodges TN, Li S, Cai G, Zamora MR. Comparison of PCR, Antigenemia Assay, and Rapid Blood Culture for Detection and Prevention of Cytomegalovirus Disease after Lung Transplantation. *J Clin Microbiol*. 2000; 38:768–772. [PubMed: 10655383]
- Wiener-Well Y, Yinnon AM, Singer P, Hersch M. Reactivation of cytomegalovirus in critically sick patients. *Isr Med Assoc J*. 2006; 8:583–584. [PubMed: 16958254]
- Wilkinson GWG, Tomasec P, Stanton RJ, Armstrong M, Prod'homme V, Aicheler R, McSharry BP, Rickards CR, Cochrane D, Llewellyn-Lacey S, Wang ECY, Griffin CA, Davison AJ. Modulation of natural killer cells by human cytomegalovirus. *J Clin Virol*. 2008; 41:206–212. [PubMed: 18069056]

- Winston DJ, Young JAH, Pullarkat V, Papanicolaou GA, Vij R, Vance E, Alangaden GJ, Chemaly RF, Petersen F, Chao N, Klein J, Sprague K, Villano SA, Boeckh M. Maribavir prophylaxis for prevention of cytomegalovirus infection in allogeneic stem cell transplant recipients: a multicenter, randomized, double-blind, placebo-controlled, dose-ranging study. *Blood*. 2008; 111:5403–5410. [PubMed: 18285548]
- Wohl DA, Zeng D, Stewart P, Glomb N, Alcorn T, Jones S, Handy J, Fiscus S, Weinberg A, Gowda D, van der Horst C. Cytomegalovirus Viremia, Mortality, and End-Organ Disease Among Patients With AIDS Receiving Potent Antiretroviral Therapies. *JAIDS Journal of Acquired Immune Deficiency Syndromes*. 2005; 38:538–544.
- Ziemann M, Sedmund-Adib B, Reiland P, Schmucker P, Hennig H. Increased mortality in long-term intensive care patients with active cytomegalovirus infection. *Crit Care Med*. 2008; 36:3145–3150. [PubMed: 18936696]

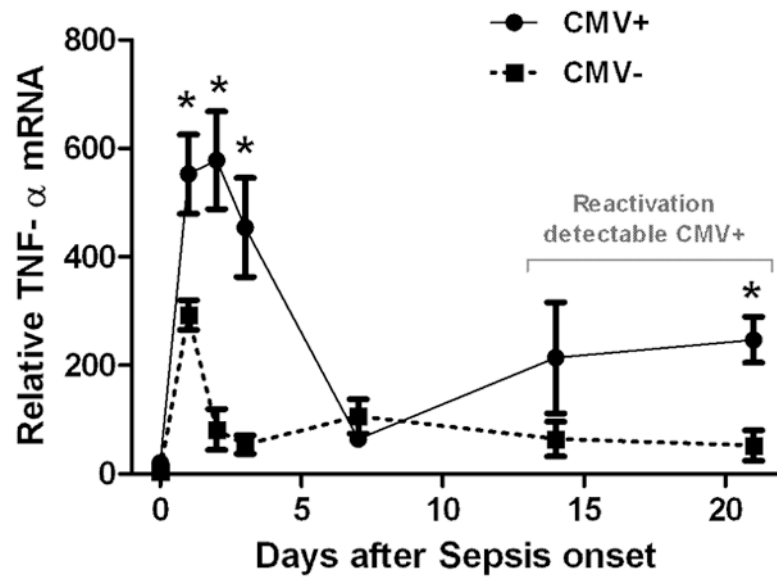


Figure 1. Influence of previous cytomegalovirus infection on pulmonary TNF- α response to sepsis

BALB/c mice latently infected with 10^6 pfu Smith murine cytomegalovirus (CMV+) or naïve (CMV-) underwent sepsis by cecal ligation and puncture. Lung homogenates from cohorts (n 3-5) were evaluated for TNF- α and β -actin mRNA 1, 2, 3, 7, 14 and 21 days after sepsis. TNF- α mRNA are expressed relative to β -actin and * indicates significant difference from CMV- mice (two-tailed Student's t-test $p < 0.05$). Figure produced from previously published data (Cook et al., 2006b).

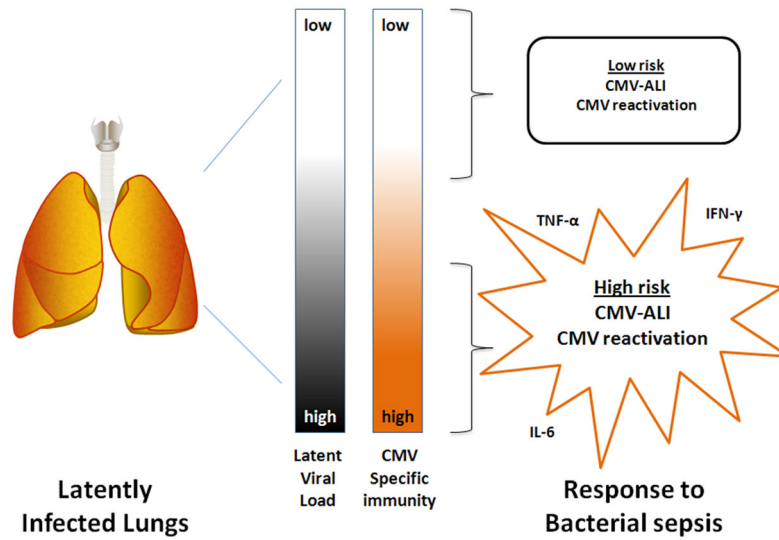


Figure 2. Model for immunopathogenesis after cytomegalovirus infection

Following primary infection, cytomegalovirus (CMV) becomes latent in the lungs of the infected host. The conditions of the original infection determine lung latent viral load (Reddehase et al., 1994) as well as CMV-specific immunity, with high viral loads inducing “inflated” CMV-specific immunity (Thomas et al., 2010). During a bacterial septic challenge there is activation of CMV-specific immunity (Forster et al., 2010). In this model, hosts with heavy latent viral load and inflated immunity are prone to CMV reactivation and an exaggerated pulmonary inflammatory response (Cook et al., 2006b), leading to CMV-associated lung injury (CMV-ALI).