

## RAPID COMMUNICATION

# Effects of metoclopramide on the mouse anterior pituitary during the estrous cycle

Regina Célia Teixeira Gomes,<sup>I</sup> Carina Verna,<sup>II</sup> Ricardo S Simões,<sup>III</sup> Roberta B Wolff,<sup>II</sup> Edmund C. Baracat,<sup>III</sup> José Maria Soares-Jr<sup>II</sup>

<sup>I</sup>Federal University of São Paulo – Morphology, São Paulo/SP, Brazil. <sup>II</sup>Federal University of São Paulo – Gynecology Department, São Paulo/SP, Brazil.

<sup>III</sup>Faculdade de Medicina da Universidade de São Paulo - Departamento de Obstetria e Ginecologia, São Paulo/SP, Brazil.

Email: jsoares415@hotmail.com

Tel.: 55 11 5081-3685

## INTRODUCTION

The symptoms of hyperprolactinemia in women mainly result from changes in the release of gonadotropins and the consequent repercussions on ovarian function.<sup>1-3</sup> Metoclopramide is a hyperprolactinemic drug that is used as an antiemetic agent.<sup>4,5</sup> In female mice, metoclopramide-induced hyperprolactinemia causes changes in the reproductive system, mainly in ovarian function and the endometrium.<sup>6-10</sup> While there is extensive data regarding prolactin regulation and hyperprolactinemic states, the direct effects of metoclopramide on the morphological and functional aspects of pituitary cells remain unknown. Therefore we have evaluated the histomorphological and immunohistochemical changes in lactotrophs of female mice upon treatment with metoclopramide.

## MATERIALS AND METHODS

Eighty adult, virgin female mice of the Swiss EPM-1 strain were kept on food and water *ad libitum* at room temperature (22°C) and under artificial light with a photoperiod of 12 hours (lights on 7 a.m.–7 p.m.). The animals were randomly divided into 2 groups of 40 animals each: control (Ctr), which were injected daily with drug vehicle (0.2 ml of saline solution), and experimental (HPrl), treated with metoclopramide (6.7 µg/g daily).<sup>6-10</sup> Injections were made by the subcutaneous route at 11 a.m., and the treatments lasted 50 days. The experimental protocol was approved (Report No. 0809/04) by the UNIFESP-EPM Review Board.

On day 50, 1 h after the last injection, colpocytological examination of vaginal smears was carried out for all animals, which were in each of the 4 phases of the estrous cycle (10 mice per phase in both Ctr and HPrl groups), before they were euthanized by decapitation. The animals not typified remained on treatment and were euthanized once their phase was diagnosed. Hormone levels were measured in blood samples taken immediately after euthanasia. Pituitary glands were carefully dissected out and immediately immersed in Bouin's liquid for further histological processing.

Serum 17β-estradiol and progesterone was determined using their respective kits (ICN Biomedicals Inc., Costa Mesa, CA, USA). The samples were assayed in duplicate and processed on the same day. The detection limits for estradiol and progesterone were approximately 0.1 pg/ml and 0.15 ng/ml, respectively. Crossreactivity with other steroids for both assays was less than 0.01%. Serum prolactin (PRL) was determined using a mouse PRL radioimmunoassay kit.

For immunohistochemistry analyses, pituitaries were fixed in Bouin's fluid for 6 hours and embedded in paraffin; 5-µm sections were microwaved in 1 M sodium citrate buffer (pH 6.0) for 8 min in order to retrieve the antigen.<sup>11</sup> After treatment with 0.1% Triton X-100 for 10 min, endogenous peroxidase activity was blocked with 0.3% H<sub>2</sub>O<sub>2</sub> in methanol for 30 min. Antibody non-specific binding was blocked with normal goat serum (VECTASTAIN Elite ABC kit, Vector Laboratories) for 20 min at room temperature. The sections were then incubated overnight with primary antibody at 4–8°C (1:600, A0569, Dako Cytomation). After washing in PBS, sections were incubated with the secondary antibody, rabbit anti-chicken IgG (1:800, DakoCytomation) for 15 min. Reaction products were visualized by using 3,3'-diaminobenzidine (DAB, Sigma Chemical Co). The negative control was prepared by incubating sections with rabbit immunoglobulin fraction (DAKO Cytomation) instead of the primary antibody. Sections were counterstained with hematoxylin.

The number and the nuclear volume of prolactin-immunolabeled cells (lactotroph cells) were evaluated in images taken by a high-resolution camera (AxioCam MRC, Carl Zeiss) at a final magnification of x400. The camera was connected to a computer coupled to a light microscope (Axiolab Standard 2.0, Carl Zeiss) and images were analyzed using REL AxionVision 4.6 software (Carl Zeiss). To evaluate the number of lactotroph cells, 8 fields were captured for every sample with a x40 objective (37,745.55 µm<sup>2</sup> field area) and a total of 80 fields were analyzed for each group (total area for group = 299,644.00 µm<sup>2</sup>). To calculate nuclear volume, the largest (a) and the shortest (b) nuclear diameters from 50 lactotroph cells for every animal were measured at a final magnification of x1000 and then used in the formula  $V = a \cdot b^2 / 1.91$ .<sup>12</sup> The results were analyzed by analysis of variance (ANOVA) followed by the Kruskal-Wallis test ( $p < 0.05$ ).

## RESULTS

The level of 17β-estradiol was higher in the control (Ctr) group than in the HPrl group in all phases, particularly

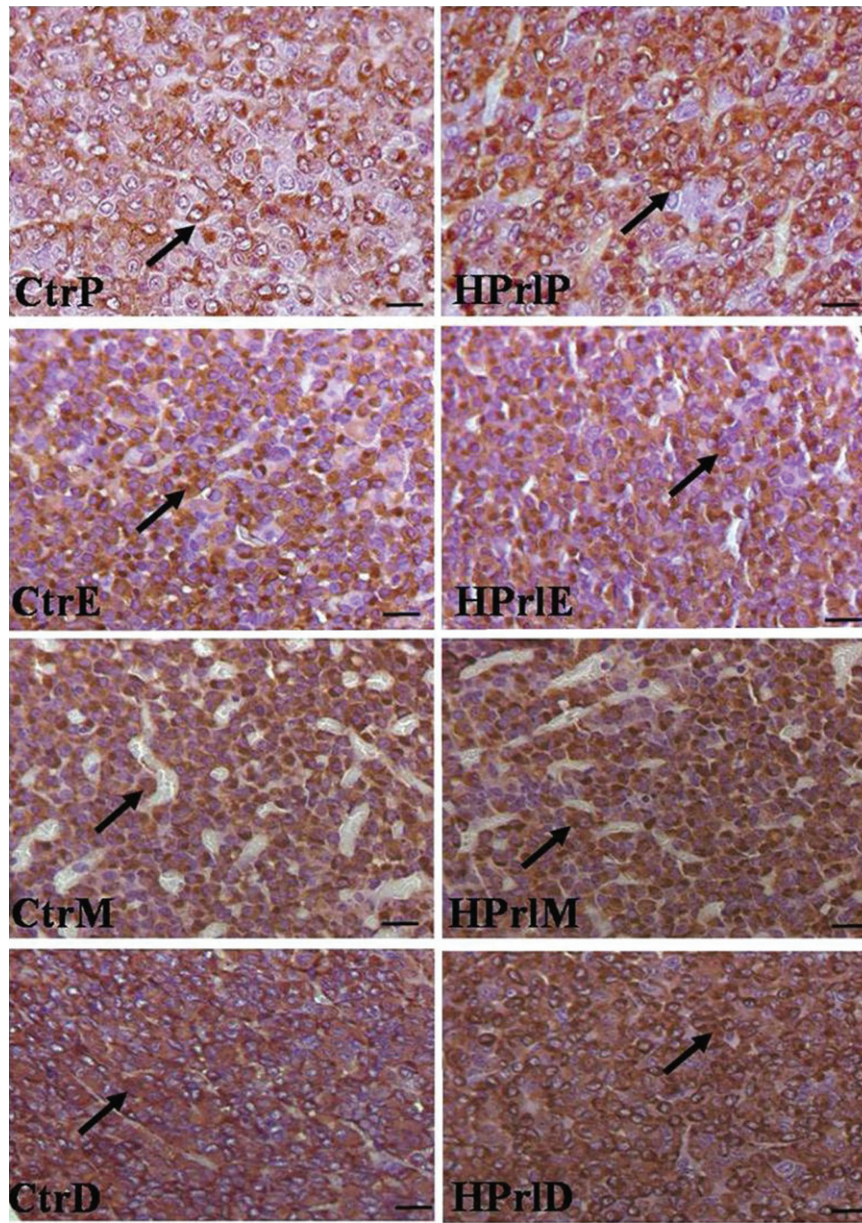
**Table 1** - Circulating hormones and pituitary morphometric data throughout the estrous cycle in female control mice (Ctr) or mice rendered hyperprolactinemic (HPrI) by treatment with metoclopramide.

	Proestrus		Estrus		Metaestrus		Diestrus	
	Ctr	HPrI	Ctr	HPrI	Ctr	HPrI	Ctr	HPrI
Serum hormones:								
17β-Estradiol (pg/mL)	121.2±8.2 <sup>a</sup>	90.3±3.9 <sup>b</sup>	92.3±2.8	45.3±3.1 <sup>b</sup>	65.8±5.7	55.3±2.8 <sup>b</sup>	72.4±3.5	59.3±4.2 <sup>b</sup>
Progesterone (ng/mL)	11.6±0.5 <sup>a</sup>	3.7±0.1 <sup>b</sup>	5.7±0.4	2.7±0.2 <sup>b</sup>	6.1±0.1	1.9±0.4 <sup>b</sup>	7.7±0.2	2.9±0.3 <sup>b</sup>
Prolactin (ng/mL)	44.1±7.1 <sup>a</sup>	301.2±42.1 <sup>b</sup>	28.8±8.1	274.3±35.5 <sup>b</sup>	20.8±5.3	264.1±42.9 <sup>b</sup>	19.3±5.6	269.1±42.1 <sup>b</sup>
Pituitary lactotrophs:								
Density (cells/1000 μm <sup>2</sup> )	9.1±0.3	12.2±0.1 <sup>b</sup>	8.4±0.1	10.2±0.2 <sup>b</sup>	8.0±0.2	11.0±0.1 <sup>b</sup>	8.1±0.3	9.7±0.2 <sup>b</sup>
Cell volume (μm <sup>3</sup> )	151,33±7.1 <sup>a</sup>	176.2±9.1 <sup>b</sup>	128,58±7.1	169.3±8.5 <sup>b</sup>	102.48±5.3	166.1±8.9 <sup>b</sup>	106.1±4.6	165.1±8.1 <sup>b</sup>

Data are shown as mean ± SD.

<sup>a</sup>indicates p<0.05 when compared to other phases of the Ctr groups.

<sup>b</sup>indicates p<0.05 when compared to the Ctr group in each estrous cycle phase.



**Fig. 1** - Immunohistochemical localization of prolactin in adenohypophyseal lactotrophs in female control (Ctr) mice or mice treated with metoclopramide (HPrI) in the estrous phase. Arrows indicate prolactin-positive cells. P= Proestrus; E= Estrus, M= Metaestrus; D= Diestrus. Scale bar = 20 μm.

during the proestrous phase (Table 1). However, the level of progesterone was higher in the Ctr group (Table 1). Also, the highest level of prolactin in the HPrl group occurred during the proestrus phase (Table 1). PRL immunolabeling of pituitary glands revealed markedly stronger expression in the metoclopramide group (Fig. 1). Metoclopramide-treated female mice had significant increases in the number and the volume of lactotroph cells of the pituitary gland during all phases of the estrous cycle (Table 1).

## DISCUSSION

In the neuroendocrine axis, dysfunction of hypothalamic dopamine or its pituitary receptors leads to hyperprolactinemia and reproductive disturbances.<sup>13,14</sup> The PRL secretory profile is well established in female mice; circulating PRL remains low in normal cycling animals throughout most of the estrous cycle. There is one prominent PRL surge at proestrus, which is coincident with luteinizing hormone (LH), for a period of 4–5 days.<sup>3</sup> Our serum PRL results also revealed higher levels in Ctr proestrus animals than control rats in other phases.

Metoclopramide has been used to study the effects of the elevation of prolactin (PRL) plasma levels on the body for many years<sup>15</sup>. However, the pituitary synthesizes and secretes several distinct hormones. Therefore, we employed an immunohistochemical PRL marker to identify lactotroph cells.<sup>16</sup>

We found that metoclopramide not only increased the number but also stimulated the metabolic activity of lactotrophs, as indicated by the enlarged nuclear volumes in hyperprolactinemic animals irrespective of the phase of the estrous cycle. Given the existence of a definite relationship between nuclear volume and cell metabolism,<sup>12</sup> it is conceivable that the observed increase of circulating PRL is due to an increase of the number and the activity of lactotrophs. Interestingly, metoclopramide-treated animals showed high levels of circulating PRL and increased number and nuclear volumes of lactotrophs, and this profile did not change throughout the phases of the estrous cycle.

Dopamine and its agonists regulate many systems through stimulation of adrenergic and dopaminergic receptors and also regulate PRL production.<sup>17</sup> As a D2 receptor antagonist, metoclopramide affects PRL secretion.<sup>7,8,13,18</sup> The long and short isoforms of the dopamine receptor (D2L and D2S) exhibit similar pharmacological properties and are co-expressed in the same cells.<sup>19</sup> The D2L isoform is predominant in the rat pituitary, striatum, and olfactory tubercle, whereas D2S is more abundant in the hypothalamus.<sup>20–22</sup> Activation of either isoform in rat lactotrophs mediates dopamine suppression of the PRL gene.<sup>23</sup>

While PRL directly inhibits secretion of gonadotropins from the anterior pituitary, there is accumulating evidence that PRL also exerts a direct inhibitory effect on gonadotropin actions in the ovary<sup>24</sup>. Physiological levels of PRL suppress follicle-stimulating hormone (FSH)-induced estradiol production through a reduction in aromatase expression and PRL increases progesterone production by augmenting StAR, P450scc, and 3 $\beta$ HSD expression in granulosa cells.<sup>25</sup> However, hyperprolactinemia may inhibit GnRH release and reduce ovulation, explaining the reduction in progesterone.<sup>7,8,24</sup> Also, metoclopramide-induced hyperprolactinemia correlates with a low number of luteal

bodies, which are ovarian structures responsible for progesterone production.<sup>7</sup>

The central PRL-secretion regulator dopamine inhibits lactotroph proliferation and decreases the size of hyperprolactinemic lactotrophs.<sup>26,27</sup> Our results show that daily treatment with metoclopramide induces a consistent hyperprolactinemic state and increases the number and the volume of lactotrophs. Thus, our data suggest that besides the increase of pituitary PRL secretion, significant proliferation of the pituitary gland occurs. If this process were to continue, we would predict an evolution towards pituitary gland tumorigenesis. We also observed a significant decrease in progesterone levels coexisted with PRL serum elevation. Overall, these disturbances may have deleterious effects on ovarian function,<sup>7</sup> endometrial tissue,<sup>9</sup> and embryo implantation.<sup>8</sup> Finally, hyperprolactinemia caused by metoclopramide in mice is due to an increase in the number and activity of lactotrophs and these alterations seem to be independent of the cycle phase.

## REFERENCES

1. Qaseem A, Snow V, Denberg TD, Casey DE Jr, Forcica MA, Owens DK, et al. Hormonal testing and pharmacologic treatment of erectile dysfunction: a clinical practice guideline from the American College of Physicians. *Ann Intern Med.* 2009;151:639-49.
2. Deligeorgiou E, Tsimaris P. Menstrual disturbances in puberty. *Best Pract Res Clin Obstet Gynaecol.* 2010;24:157-71, doi: 10.1016/j.bpobgyn.2009.11.001.
3. Egli M, Leeners B, Kruger TH. Prolactin secretion patterns: basic mechanisms and clinical implications for reproduction. *Reproduction.* 2010;140:643-54, doi: 10.1530/REP-10-0033.
4. Libert N, De Rudnicki S, Cirodde A, Janvier F, Leclerc T, Borne M, et al. Promotility drugs use in critical care: indications and limits? *Ann Fr Anesth Reanim.* 2009;28:962-75.
5. Fujii Y. Prevention of nausea and vomiting during termination of pregnancy. *Int J Gynaecol Obstet.* 2010;111:3-7, doi: 10.1016/j.ijgo.2010.05.007.
6. Verna C, Soares Jr JM, Martins FW, Teixeira RC, Mosquette R, Simões RS, et al. Effects of metoclopramide-induced hyperprolactinemia on the murine corneal. *Arq Bras Oftalmol.* 2006;69:645-9, doi: 10.1590/S0004-27492006000500004.
7. Rossi AG, Soares Jr JM, Motta EL, Simões MJ, Oliveira-Filho RM, Rodrigues GL, et al. Metoclopramide-induced hyperprolactinemia affects mouse endometrial morphology. *Gynecol Obstet Invest.* 2002;54:185-90, doi: 10.1159/000068380.
8. Panzan MQ, Soares JM Jr, Alves MEL, Haapalainen EF, Simões MJ, Baptista HA, et al. Metoclopramide-induced hyperprolactinemia caused marked decline in pinopodes and pregnancy rates in mice. *Hum Reprod.* 2006;21:2514-20, doi: 10.1093/humrep/del093.
9. Gomes RC, Oliveira PB, Rossi AG, Baracat MC, Simões RS, Baracat EC, et al. Hyperprolactinemia effects on the female mice uterus during proestrus. *Rev Bras Ginecol Obstet.* 2009;31:385-90.
10. Rossi AG, Teixeira GRC, de Jesus SM, Dos Santos SR, Oliveira PB, Soares JM Jr, et al. Effects of metoclopramide-induced hyperprolactinemia on the prolactin receptor of murine endometrium. *Fertil Steril.* 2010;93:1643-9, doi: 10.1016/j.fertnstert.2009.02.021.
11. Hikake T, Hayashi S, Iguchi T, Sato T. The role of IGF1 on the differentiation of prolactin secreting cells in the mouse anterior pituitary. *J Endocrinol.* 2009;203:231-40, doi: 10.1677/JOE-09-0232.
12. Navarrete MA, Nazario AC, Simoes MJ, Baracat EC, De Lima GR. Morphometric analysis of fibroblasts of the mammary lobular stroma during the follicular and luteal phases of the menstrual cycle. *Morphologie.* 1998;82:7-10.
13. Ben-Jonathan N, Hnasko R. Dopamine as a Prolactin (Prl) Inhibitor. *Endocr Rev.* 2001;22:724-63, doi: 10.1210/er.22.6.724.
14. Bachelot A, Binart N. Reproductive role of prolactin. *Reproduction.* 2007;133:361-9, doi: 10.1530/REP-06-0299.
15. Messina CI, Dafopoulos K, Chalvatzas N, Georgoulas P, Anifandis G, Messinis IE. Effect of ghrelin and metoclopramide on prolactin secretion in normal women. *J Endocrinol Invest* 2010 Jun 4. [PMID: 20530986; Epub ahead of print].
16. Calderoni AM, Biaggio V, Acosta M, Oliveros L, Mohamed F, Giménez MS. Cadmium exposure modifies lactotrophs activity associated to genomic and morphological changes in rat pituitary anterior lobe. *Biomaterials.* 2010;23:135-43, doi: 10.1007/s10534-009-9274-8.
17. Gabay MP. Galactogogues: medications that induce lactation. *J Hum Lact.* 2002;18:274-9.

18. Ben-Jonathan N, Mershon JL, Allen DL, Steinmetz RW. Extrapituitary prolactin: distribution, regulation, functions, and clinical aspects. *Endocr Rev.* 1996;17:639-6.
19. Carlsson A, Carlsson ML. Adaptive properties and heterogeneity of dopamine D (2) receptors - pharmacological implications. *Brain Res Rev.* 2008;58:374-8, doi: 10.1016/j.brainresrev.2007.09.007.
20. Dal Toso R, Sommer B, Ewert M, Herb A, Pritchett DB, Bach A, et al. The dopamine D2 receptor: two molecular forms generated by alternative splicing. *EMBO J.* 1989;8:4025-34.
21. Menegatti R, Fraga CAM, Barreiro EJ, Lima VLE, Rates SMK, Costa TD. Schizophrenia: forty years of the dopaminergic hypothesis from the medicinal chemistry point of view. *Quim Nova.* 2004;27:447-55, doi: 10.1590/S0100-40422004000300015.
22. Renner U, Arzberger T, Pagotto U, Leimgruber S, Uhl E, Müller A, et al. Heterogeneous dopamine D2 receptor subtype messenger ribonucleic acid expression in clinically nonfunctioning pituitary adenomas. *J Clin Endocrinol Metab.* 1998;83:1368-75, doi: 10.1210/jc.83.4.1368.
23. McChesney R, Sealfon SC, Tsutsumi M, Dong KW, Roberts JL, Bancroft C. Either isoform of the dopamine D2 receptor can mediate dopaminergic repression of the rat prolactin promoter. *Mol Cell Endocrinol.* 1991;79:1-7, doi: 10.1016/0303-7207(91)90110-E.
24. Kelly PA, Ali S, Rozakis M, Goujon L, Nagano M, Pellegrini I, et al. The growth hormone/prolactinreceptor family. *Recent Progr Horm Res.* 1993;48:123-64.
25. Nakamura E, Otsuka F, Inagaki K, Miyoshi T, Yamanaka R, Tsukamoto N, et al. A novel antagonistic effect of the bone morphogenetic protein system on prolactin actions in regulating steroidogenesis by granulosa cells. *Endocrinol.* 2010;151:5506-18, doi: 10.1210/en.2010-0265.
26. Schuff KG, Hentges ST, Kelly MA, Binart N, Kelly PA, Iuvone PM, et al. Lack of prolactin receptor signaling in mice results in lactotroph proliferation and prolactinomas by dopamine-dependent and -independent mechanisms. *J Clin Invest.* 2002;110:973-81.
27. Iversen SD, Iversen LL. Dopamine: 50 years in perspective. *Trends Neurosci.* 2007;30:188-93, doi: 10.1016/j.tins.2007.03.002.