

**Corrigendum**

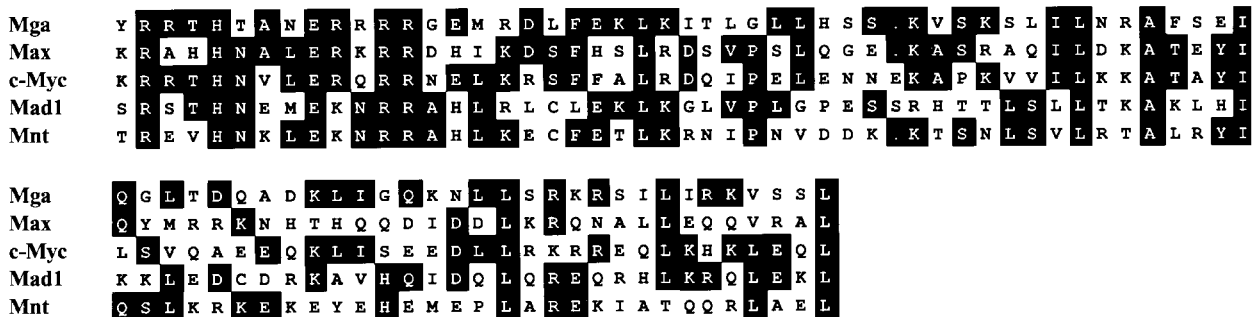
**Mga, a dual-specificity transcription factor that interacts with Max and contains a T-domain DNA-binding motif**

**Peter J.Hurlin, Eirikur Steingrimsson, Neal G.Copeland, Nancy A.Jenkins and Robert N.Eisenman**

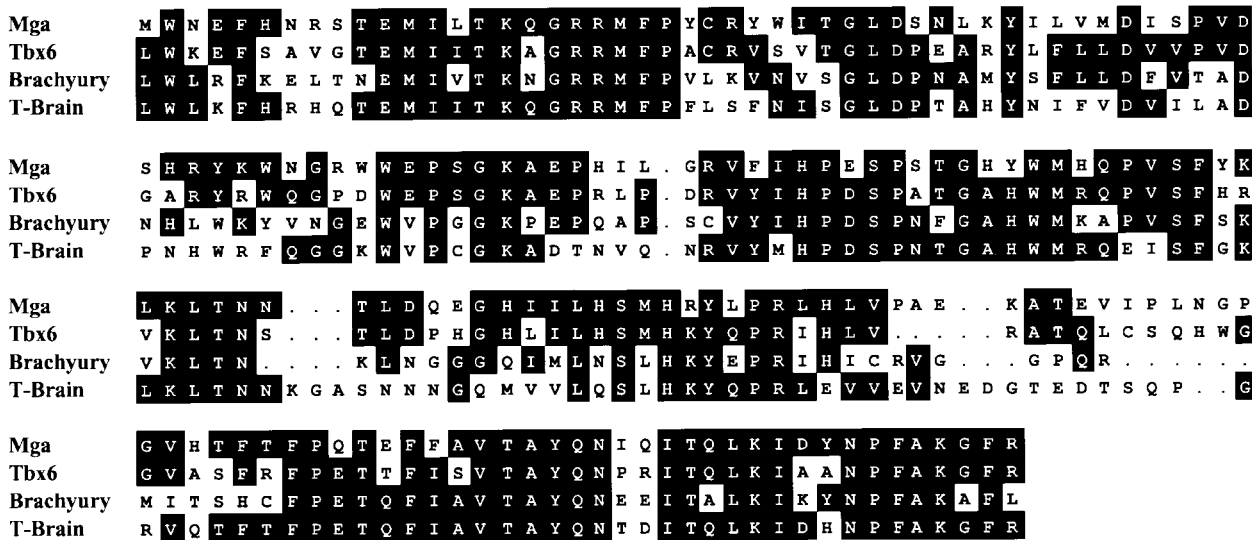
*The EMBO Journal*, **18**, 7019–7028, 1999

The authors apologize for an error made in the generation of the T-domain alignment shown in Figure 1C. In addition, the sixth amino acid of the Mga bHLHZip region shown in Figure 1B should be T and not N. The corrected sequence alignments are shown below.

**B**



**C**



**Fig. 1.** (B) Comparison of the murine Mga bHLHZip domain (aa 2365–2443) with those of Max and Max-interacting proteins. (C) Comparison of the Mga T-domain (aa 84–259) with several T-domain-containing proteins.