

RESEARCH

Open Access

Salmonella Typhimurium invasion of HEp-2 epithelial cells *in vitro* is increased by *N*-acylhomoserine lactone quorum sensing signals

Live L Nesse^{1*}, Kristin Berg¹, Lene K Vestby¹, Ingrid Olsaker² and Berit Djønne¹

Abstract

Background: In Gram-negative bacteria, the most commonly studied quorum sensing signals are the *N*-acylhomoserine lactones (AHLs). In *Salmonella*, AHLs are recognized by SdiA, which is believed to be a sensor of AHLs produced by other bacteria, since *Salmonella* does not produce AHLs itself. It has been speculated that AHLs produced by the gastrointestinal flora may influence the regulation of virulence traits in *Salmonella*. The aim of the present work was to study the effect of AHLs on epithelial cell invasion by *Salmonella in vitro*.

Methods: Invasion by *Salmonella enterica* subspecies *enterica* serovar Typhimurium (*S. Typhimurium*) strain and its isogenic *sdiA* mutant was studied using a conventional gentamycin invasion assay with HEp-2 cells at 37°C. Gene expression was studied using a semi-quantitative PCR.

Results: The *S. Typhimurium* strain, but not its isogenic *sdiA* mutant, displayed increased *in vitro* invasion after addition of both *N*-hexanoyl-DL-homoserine lactone (C6-AHL) and *N*-octanoyl-DL-homoserine lactone (C8-AHL). Increased expression of two of the genes in the SdiA regulon (*rck* and *srgE*) was observed in the wild type strain, but not in the *sdiA* mutant.

Conclusions: The results from the present study show that *S. Typhimurium* can respond to two different AHL quorum sensing signals (C6-AHL and C8-AHL) with increased cell invasion at 37°C *in vitro*, and that this response most likely is *sdiA* mediated. These results indicate that if AHLs are present in the intestinal environment, they may increase the invasiveness of *Salmonella*.

Introduction

Bacteria can communicate through quorum sensing signals, and they use quorum sensing to regulate a number of physiological activities, e.g. symbiosis, virulence, competence, conjugation, antibiotic production, motility, sporulation, and biofilm formation (for review, see [1,2]). In Gram-negative bacteria, the most commonly studied quorum sensing signals are the *N*-acylhomoserine lactones (AHLs). A variety of AHL molecules have been discovered which differ primarily in acyl chain length and the nature of the substituents at the C-3 position. AHLs are synthesized by proteins encoded by *luxI* gene homologues.

Salmonella enterica is a facultative intracellular pathogen that can cause diseases ranging from mild gastroenteritis to systemic infections. The AHL sensor of *Salmonella* is *sdiA* [3]. It is believed that *Salmonella* acquired the *sdiA* gene through lateral transfer of a pseudomonad homologue to an early ancestor [4]. However, searches in the existing databases have failed to identify any *luxI* homologue in available sequences [3], indicating that *Salmonella* do not synthesize AHLs. This is supported by studies showing that *Salmonella* did not activate any AHL reporter systems tested under the conditions employed [3].

Consequently, *Salmonella* appear to be able to recognize AHL signals, but not to produce them. SdiA is therefore believed to be a sensor of AHLs produced by other bacterial species [3], possibly in the mammalian gastrointestinal tract [5]. An interesting question is whether AHLs produced by the gastrointestinal flora

* Correspondence: live.nesse@vetinst.no

¹Norwegian Veterinary Institute, P.O.Box 750 Sentrum, N-0106 Oslo, Norway
Full list of author information is available at the end of the article

may influence the regulation of virulence traits in *Salmonella* like cell invasion. In the present work, the effect of different AHLs on invasion of HEP-2 epithelial cells by *Salmonella enterica* subspecies *enterica* serovar Typhimurium (*S. Typhimurium*) was studied *in vitro*.

Materials and methods

Bacterial strains

The bacteria used in this study were the wildtype *S. Typhimurium* ATCC 14028 and its isogenic *sdia* mutant (Δ STM1950: Kan-PT7) which was kindly provided by Professor McClelland at Vaccine Research Institute of San Diego, USA. As a control bacterium, known to be non-invasive, *Escherichia coli* ATCC 25922 was included. Cultures were routinely grown in 5 mL Luria-Bertani (LB) (Merck KGaA, Darmstadt, Germany) broth without agitation for approximately 18-20 hours at 37°C before used in experiments.

Cell lines, culture conditions and buffers

The cell line HEP-2 ATCC CCL-23 (LGC Standards, Middlesex, UK) was used in the invasion experiments. The cells were grown in Minimum Essential Medium (MEM; Lonza, Basel, Switzerland) supplemented 2 mM L-glutamine (Lonza) and 10% fetal calf serum (Merck) at 37°C under standard tissue culture conditions, without CO₂ in 25 cm² flasks (Corning B.V. Lifesciences, Amsterdam, Netherlands) and confluent flasks were split twice a week by trypsin-EDTA (Lonza) treatment and diluted 1:8 in fresh media. When used for bacterial invasion studies, the cells were diluted 1:2, seeded in 24 well plates (Corning) and incubated over night at 37°C. The following day, cells were counted using a Bürker chamber after staining with Trypan Blue Stain 0.4% (Lonza) to quantify the mean number of cells per well.

Cell invasion studies

Over night cultures were diluted 1:100 in 5 mL LB and subcultured for 3 hours in 37°C. Then the cultures were ten fold diluted twice, first in MEM and subsequently in MEM supplemented with either *N*-hexanoyl-DL-homoserine lactone (C6-AHL) (Sigma-Aldrich, St. Louis, MO, USA) or *N*-octanoyl-DL-homoserine lactone (C8-AHL) (Sigma-Aldrich) to a final concentration of 1 µM/mL (hereafter called MEMs). Distilled water (dH₂O) was used instead of AHL for the controls. To measure bacterial invasion, a method based on the one described by Lissner *et al.* was used [6]. Briefly: 1 mL bacteria/MEMs was added to HEP-2 cells grown over night in 24 well plates, to a multiplicity of infection (MOI) of approximately 100 bacteria pr cell. Plates were incubated for 90 min at 37°C and MEMs was removed. The cells were washed three times with 1 mL PBS de Boer (Na₂HPO₄ × 2H₂O 1.34 g/L, NaH₂PO₄ × H₂O 0.34 g/L, NaCl 8.5

g/L, pH: 7.2 ± 0.1). Then 1 mL MEM supplemented with 250 µg/mL gentamycin (Lonza) (hereafter called MEMg) was added, followed by incubation at 37°C for two hours. MEMg was removed; cells were washed three times with PBS de Boer and lysed with ice-cold 1% Triton-X (Sigma-Aldrich) in PBS de Boer for 10 min. The cells were dislodged using a sterile cell scraper (BD Falcon, Bedford, MA, USA), pipetted to disperse bacterial aggregates, ten fold serial diluted and plated out on blood agar to determine the number of cfu.

In each experiment, every combination of supplement and bacteria were tested in triplets, and three independent experiments were performed for each strain. To eliminate the day to day variations, the effect of AHL addition in each experiment was calculated as fold change, i.e.: (the mean number of intracellular cfu after addition of AHL)/(the mean number of intracellular cfu without addition of AHL), and thereafter log₁₀ transformed to allow calculation of confidence intervals. Results are given as means of three independent experiments. An increase in cell invasion was considered statistically significant (*p* < 0.05) if the value “0” was not included in the 95% confidence interval.

Semi-quantitative PCR

The bacteria were prepared and incubated with 1 µM AHL or dH₂O as described under cell invasion studies with the exceptions that HEP-2 cells were not present, and the incubation was performed in 100 mL LB. After incubation, each bacterial suspension was divided into 25 mL aliquots and transferred to four 50 mL test tubes (Greiner Bio-One, Frickenhausen, Germany). To each tube, 5 mL ice cold 5% acidic phenol (Sigma Aldrich)/95% ethanol (Kemetyl Norge, Vestby, Norway) were added and the mixture was kept on ice for 20 min to stabilize the mRNA [7]. The mixture was then centrifuged at 4°C, 2330 × *G* for 20 min, and most of the supernatant discarded. Each pellet was resuspended in the remaining supernatant. The suspensions were pooled two and two, transferred to two Eppendorf tubes (BRAND GMBH, Wertheim, Germany) and centrifuged at 14 000 × *G* for 1 min at room temperature. The supernatants were discarded and the pellets frozen at -70°C until the next step in the procedure. Total RNA was isolated from the pellets using a SV Total RNA Isolation kit (Promega Corporation, Madison, WI, USA) according to the manufacturer's instructions. cDNA was synthesized immediately after RNA isolation, using Invitrogen's SuperScript[®] II Reverse Transcriptase (Invitrogen, Ltd, Paisley, UK) according to manufacturer's instructions. PCR was performed in 25 µL reaction volumes using 1 µL cDNA, 0.5 µL of each primer, 0.5 µL of each dNTP and 0.2 µL Taq polymerase (Qiagen GmbH, Hilden, Germany), and thermocycled by 5 min

Table 1 Primers used for RT-PCR

Gene	Acc. no/locus tag	Primers 5' - 3' F: forward R: reverse
<i>rck</i>	CP001362.1 /STM14_5534	F: GTTGTATCCCGGCATGCTGAT R: ATATGCCAGAGCCGGATAGAG
<i>srgE</i>	AE006468.1/STM1554	F: GTAATGTCAATTGCCGCATGG R: CCGAGCAGTTGGTCAAGGATT

initial denaturation at 95°C, thereafter 26, 28 and 31 cycles of 95°C 40s, 60°C 30s and 72°C 40s, followed by 7 min final extension at 72°C. The primers used are listed in Table 1. The PCR fragments were separated by gel electrophoresis and examined both visually and using BioNumerics® software (Applied MathsBVBA, Belgium). The best measurements of quantitative differences were observed at 28 cycles.

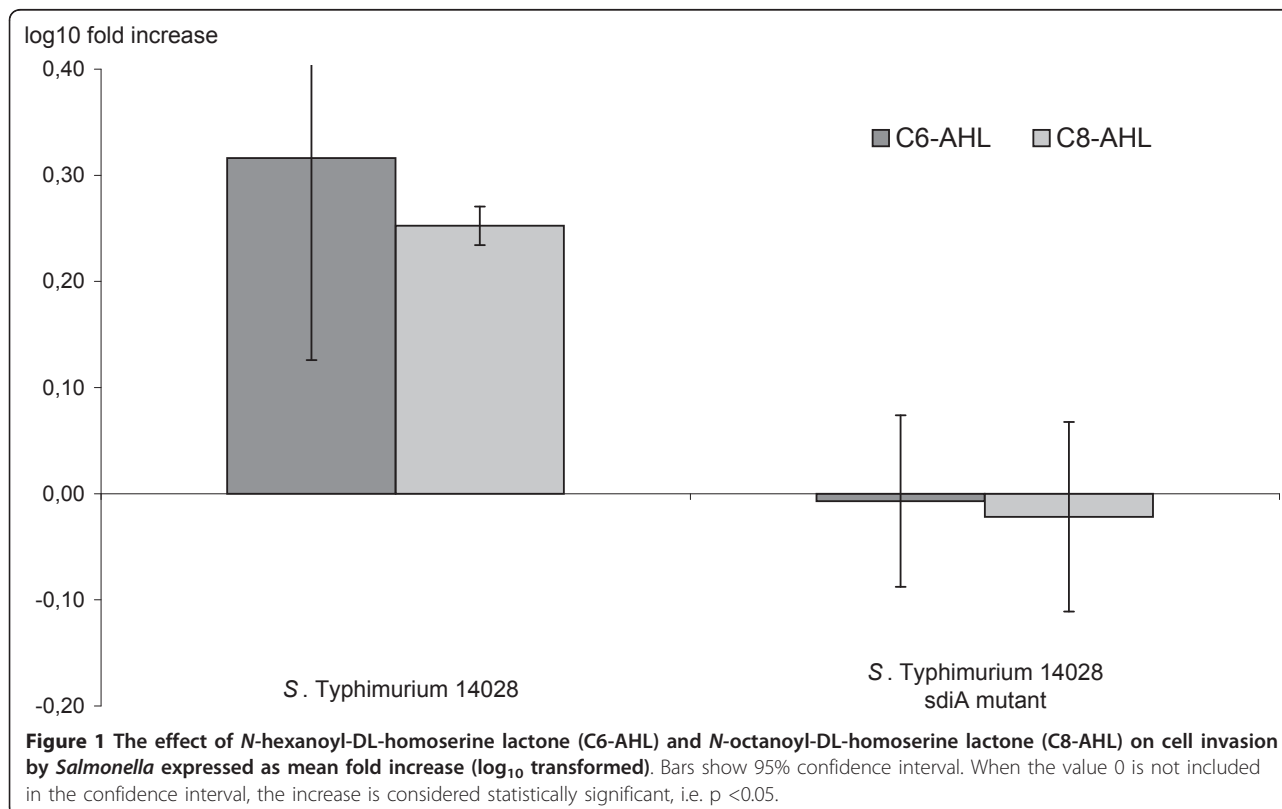
Results and Discussion

Both the *S. Typhimurium* wildtype strain ATCC 14028 and its isogenic *sdiA* mutant displayed invasion of the epithelial cell line HEP-2 at 37°C without addition of AHLs (0.5 - 2.5 * 10⁵ cfu per well, depending on the day to day variation). However, when 1 µM of C8-AHL or C6-AHL was added, the *S. Typhimurium* wildtype strain displayed statistically significant higher cell invasion (approximately two fold) with both AHLs, as compared to the invasion without AHL (Figure 1). No such

differences were observed when testing the isogenic *sdiA* mutant strain, indicating that the increased cell invasion responses were *sdiA* dependent.

To date, SdiA is known to activate two loci, containing a total of seven genes [5,8]. One locus, the *rck* operon, is located on the virulence plasmid and contains six genes. The second locus is located on the chromosome and encodes a single gene, named *srgE*. Several different AHLs, including C6-AHL at the concentration of 1 µM, have earlier been shown to activate promoters of the genes *rck* and *srgE* in a *sdiA*-dependent manner in *Salmonella* [5,8]. To see if these genes were activated in our experiment, we studied the expression of the genes under similar experimental conditions as the cell invasion experiments using a semi-quantitative PCR (Figure 2). For both genes, we observed a low level of *sdiA*- and AHL-independent expression, as earlier reported for *rck* [5,8]. In addition, the wildtype *S. Typhimurium* strain displayed an increased expression of both *rck* and *srgE* when 1 µM of C8-AHL or C6-AHL was added, whereas its isogenic *sdiA* mutant did not. The results indicate that SdiA acted as an AHL induced transcriptional regulator under our experimental conditions.

Consequently, the results from the present study show that a *S. Typhimurium* wildtype strain did respond to both C8-AHL and C6-AHL with increased epithelial cell



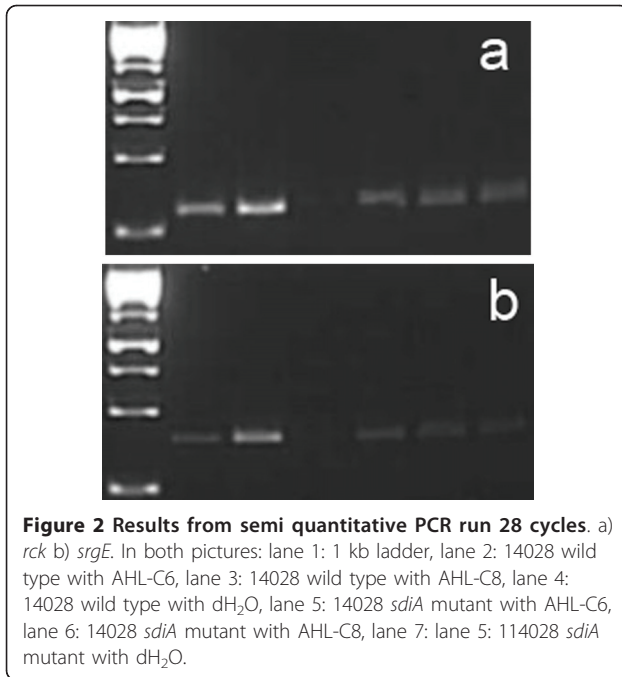


Figure 2 Results from semi quantitative PCR run 28 cycles. a) *rck* b) *srgE*. In both pictures: lane 1: 1 kb ladder, lane 2: 14028 wild type with AHL-C6, lane 3: 14028 wild type with AHL-C8, lane 4: 14028 wild type with dH₂O, lane 5: 14028 *sdiA* mutant with AHL-C6, lane 6: 14028 *sdiA* mutant with AHL-C8, lane 7: lane 5: 114028 *sdiA* mutant with dH₂O.

invasion at 37°C *in vitro*, most probably through activation of SdiA.

The exact mechanisms behind the increased cell invasion that we observed are not known. However, several genes regulated by SdiA are believed to be involved in bacteria-host interactions. Three genes in the SdiA regulated *rck* operon play a role in adhesion to host tissues [8]. It has earlier been shown that Rck promotes adherence to epithelial cells and the extracellular matrix proteins fibronectin and laminin [9], and Rck has recently also been reported to mediate a zipper-like internalization of *S. Enteritidis* into cells *in vitro* [10]. Two other genes in the *rck* operon, *pefI* and *srgA*, appear to affect the expression and function of the *pef* operon which encodes so-called plasmid-encoded fimbriae [9,11,12]. The function of the rest of the genes in this operon is unknown. Very little is also known about *srgE*, but recently a computerized analysis suggested that SrgE may be a secreted substrate of a type III secretion system [13].

It has earlier been suggested that the mammalian gastrointestinal tract may be the location where SdiA detects and responds to AHLs [5]. Although compounds that can activate AHL biosensors have been detected in the bovine rumen [14] and the avian caw (Flodgaard, Nesse, Bergsjø & Kaldhusdahl, unpublished results), little is yet known about the AHL producing potential of the intestinal flora of different hosts under varying conditions. Using a RIVET method (Recombination-based In Vivo Expression Technology) to record SdiA activity *in vivo*, Smith *et al.* observed SdiA activation during the

transit of the *S. Typhimurium* RIVET strain through turtles colonized by the AHL-producing species *Aeromonas hydrophila* [15]. On the other hand, SdiA activation was not observed during the transit through the gastrointestinal tract of a guinea pig, a rabbit, a cow, five mice, six pigs, or 12 chickens [15]. Interestingly, SdiA was activated in mice that were infected with the AHL-producing pathogen *Yersinia enterocolitica* [16]. These results indicate that *S. Typhimurium* can respond to AHLs present in the intestinal environment of these animals through the activation of SdiA.

Conclusions

The results from the present study show that *S. Typhimurium* can respond to two different AHL quorum sensing signals (C6-AHL and C8-AHL) with increased cell invasion at 37°C *in vitro*, and that this response most likely is *sdiA* mediated. This indicates that if AHLs are present in the intestinal environment, they may increase the invasiveness of *S. Typhimurium* into epithelial cells. However, any possible effects on virulence are yet to be elucidated.

Acknowledgements

The study was funded by the Norwegian Veterinary Institute.

Author details

¹Norwegian Veterinary Institute, P.O.Box 750 Sentrum, N-0106 Oslo, Norway. ²Norwegian School of Veterinary Science, P.O.Box 8146 Dep, N-0033 Oslo, Norway.

Authors' contributions

LLN was responsible for the study design, organisation of the work, analyses of the data and the preparation of the manuscript. KB carried out the cell invasion studies and PCR studies. LKV participated in the study design and the data analyses. IO was responsible for primer design and contributed to the PCR analyses. BD contributed to study design and participated in the data analyses. All authors have contributed to the writing of the manuscript, and read and approved the final manuscript.

Competing interests

The authors declare that they have no competing interests.

Received: 11 March 2011 Accepted: 28 June 2011

Published: 28 June 2011

References

1. Miller MB, Bassler BL: Quorum sensing in bacteria. *Annual Review of Microbiology* 2001, **55**:165-199.
2. Whitehead NA, Barnard AML, Slater H, Simpson NJL, Salmond GPC: Quorum-sensing in gram-negative bacteria. *Fems Microbiol Rev* 2001, **25**:365-404.
3. Michael B, Smith JN, Swift S, Heffron F, Ahmer BMM: SdiA of *Salmonella enterica* is a LuxR homolog that detects mixed microbial communities. *J Bacteriol* 2001, **183**:5733-5742.
4. Gray KM, Garey JR: The evolution of bacterial LuxI and LuxR quorum sensing regulators. *Microbiol-Sgm* 2001, **147**:2379-2387.
5. Smith JN, Ahmer BMM: Detection of other microbial species by *Salmonella*: Expression of the SdiA regulon. *J Bacteriol* 2003, **185**:1357-1366.
6. Lissner CR, Swanson RN, O'Brien AD: Genetic control of the innate resistance of mice to *Salmonella typhimurium*: expression of the Ity

- gene in peritoneal and splenic macrophages isolated *in vitro*. *J Immunol* 1983, **131**:3006-3013.
7. Tedin K, Blasi U: The RNA chain elongation rate of the lambda late mRNA is unaffected by high levels of ppGpp in the absence of amino acid starvation. *J Biol Chem* 1996, **271**:17675-17686.
 8. Ahmer BM, van RJ, Timmers CD, Valentine PJ, Heffron F: Salmonella typhimurium encodes an SdiA homolog, a putative quorum sensor of the LuxR family, that regulates genes on the virulence plasmid. *J Bacteriol* 1998, **180**:1185-1193.
 9. Crago AM, Koronakis V: Binding of extracellular matrix laminin to Escherichia coli expressing the Salmonella outer membrane proteins Rck and PagC. *FEMS Microbiol Lett* 1999, **176**:495-501.
 10. Rosselin M, Virlogeux-Payant I, Roy C, Bottreau E, Sizaret PY, Mijouin L, *et al*: Rck of Salmonella enterica, subspecies enterica serovar Enteritidis, mediates Zipper-like internalization. *Cell Res* 2010, **20**:647-664.
 11. Bouwman CW, Kohli M, Killoran A, Touchie GA, Kadner RJ, Martin NL: Characterization of SrgA, a Salmonella enterica serovar Typhimurium virulence plasmid-encoded paralogue of the disulfide oxidoreductase DsbA, essential for biogenesis of plasmid-encoded fimbriae. *J Bacteriol* 2003, **185**:991-1000.
 12. Nicholson B, Low D: DNA methylation-dependent regulation of pef expression in Salmonella typhimurium. *Mol Microbiol* 2000, **35**:728-742.
 13. Samudrala R, Heffron F, McDermott JE: Accurate prediction of secreted substrates and identification of a conserved putative secretion signal for type III secretion systems. *PLoS Pathog* 2009, **5**:e1000375.
 14. Erickson DL, Nsereko VL, Morgavi DP, Selinger LB, Rode LM, Beauchemin KA: Evidence of quorum sensing in the rumen ecosystem: detection of N-acyl homoserine lactone autoinducers in ruminal contents. *Can J Microbiol* 2002, **48**:374-378.
 15. Smith JN, Dyszel JL, Soares JA, Ellemeier CD, Altier C, Lawhon SD, *et al*: SdiA, an N-Acylhomoserine Lactone Receptor, becomes active during the transit of Salmonella enterica through the gastrointestinal tract of turtles. *PLoS ONE* 2008, **3**:e2826.
 16. Dyszel JL, Smith JN, Lucas DE, Soares JA, Swearingen MC, Vross MA, *et al*: Salmonella enterica serovar Typhimurium can detect acyl homoserine lactone production by Yersinia enterocolitica in mice. *J Bacteriol* 2010, **192**:29-37.

doi:10.1186/1751-0147-53-44

Cite this article as: Nesse *et al*: Salmonella Typhimurium invasion of HEp-2 epithelial cells *in vitro* is increased by N-acylhomoserine lactone quorum sensing signals. *Acta Veterinaria Scandinavica* 2011 **53**:44.

Submit your next manuscript to BioMed Central
and take full advantage of:

- Convenient online submission
- Thorough peer review
- No space constraints or color figure charges
- Immediate publication on acceptance
- Inclusion in PubMed, CAS, Scopus and Google Scholar
- Research which is freely available for redistribution

Submit your manuscript at
www.biomedcentral.com/submit

