

A young man with near-syncope

C. van der Werf · P. G. Postema

Published online: 18 June 2011
© Springer Media / Bohn Stafleu van Loghum 2011

Question

A 28-year-old male patient with an unremarkable medical history presented to our emergency department shortly after experiencing an episode of palpitations and near-syncope. The complaints had started at rest and he had never experienced similar complaints before. His physical examination was normal and his ECG is shown in Fig. 1. How

would you describe his ECG? What is your differential diagnosis? Would you admit this patient?

Answer

You will find the answer elsewhere in this issue.

C. van der Werf · P. G. Postema
Department of Cardiology, Heart Failure Research Center,
Academic Medical Center,
Amsterdam, the Netherlands

C. van der Werf (✉)
Department of Cardiology, Heart Failure Research Center,
Academic Medical Center, University of Amsterdam,
Meibergdreef 9,
1105 AZ Amsterdam, the Netherlands
e-mail: c.vanderwerf@amc.uva.nl

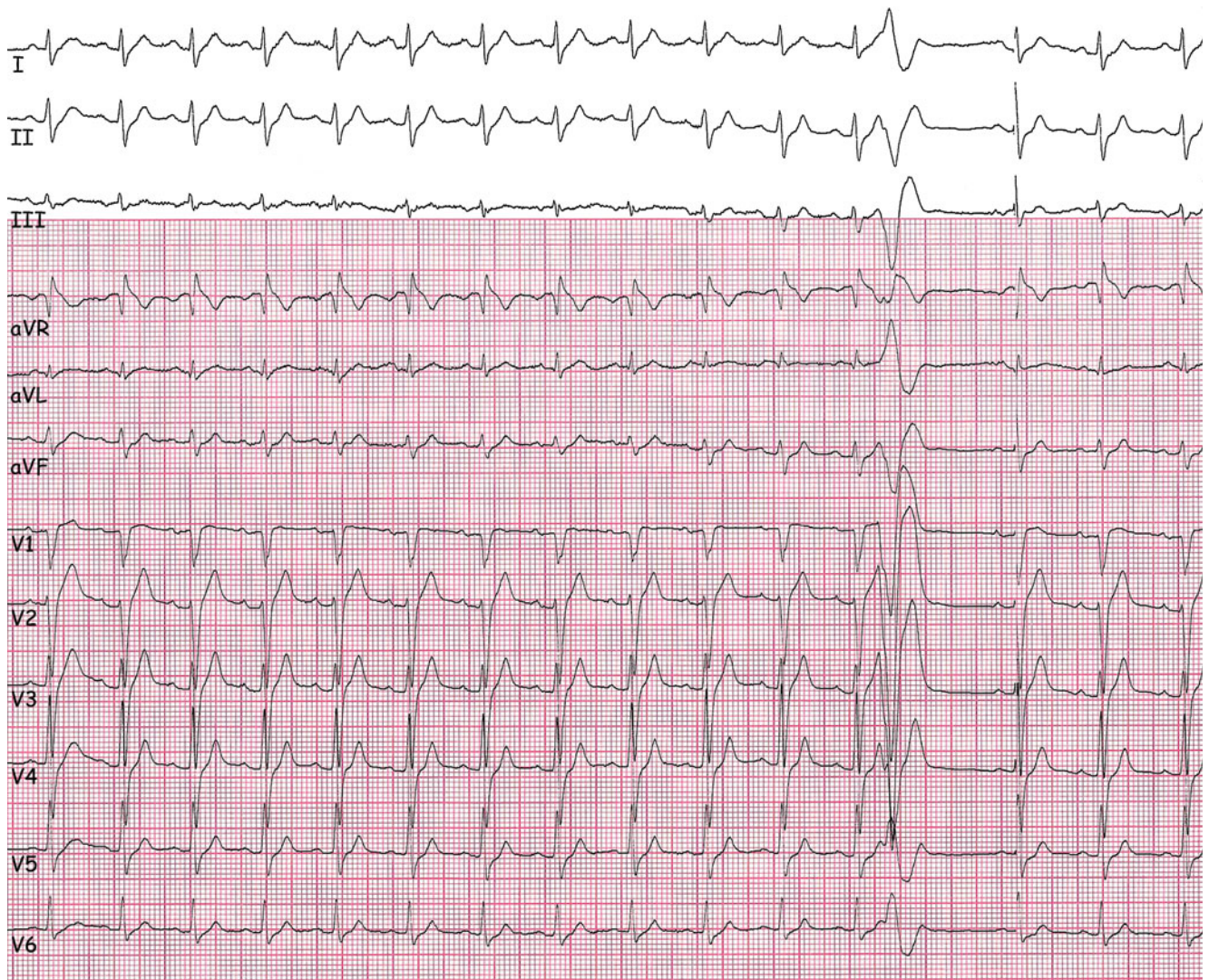


Fig. 1 Twelve-lead electrocardiogram upon presentation (25 mm/s, 10 mm/mV)