

## ORIGINAL ARTICLE

# Quantitative proteomic analyses of the response of acidophilic microbial communities to different pH conditions

Christopher P Belnap<sup>1</sup>, Chongle Pan<sup>2,3</sup>, Vincent J Deneff<sup>4</sup>, Nagiza F Samatova<sup>3</sup>, Robert L Hettich<sup>2</sup> and Jillian F Banfield<sup>4,5</sup>

<sup>1</sup>Microbiology Graduate Group, Department of Plant and Microbial Biology, University of California, Berkeley, CA, USA; <sup>2</sup>Chemical Sciences Division, Oak Ridge National Laboratory, Oak Ridge, TN, USA; <sup>3</sup>Computer Science and Mathematics Division, Oak Ridge National Laboratory, Oak Ridge, TN, USA; <sup>4</sup>Department of Earth and Planetary Science, University of California, Berkeley, CA, USA and <sup>5</sup>Microbial Graduate Group, Department of Environmental Science, Policy and Management, University of California, Berkeley, CA, USA

**Extensive genomic characterization of multi-species acid mine drainage microbial consortia combined with laboratory cultivation has enabled the application of quantitative proteomic analyses at the community level. In this study, quantitative proteomic comparisons were used to functionally characterize laboratory-cultivated acidophilic communities sustained in pH 1.45 or 0.85 conditions. The distributions of all proteins identified for individual organisms indicated biases for either high or low pH, and suggests pH-specific niche partitioning for low abundance bacteria and archaea. Although the proteome of the dominant bacterium, *Leptospirillum* group II, was largely unaffected by pH treatments, analysis of functional categories indicated proteins involved in amino acid and nucleotide metabolism, as well as cell membrane/envelope biogenesis were overrepresented at high pH. Comparison of specific protein abundances indicates higher pH conditions favor *Leptospirillum* group III, whereas low pH conditions promote the growth of certain archaea. Thus, quantitative proteomic comparisons revealed distinct differences in community composition and metabolic function of individual organisms during different pH treatments. Proteomic analysis revealed other aspects of community function. Different numbers of phage proteins were identified across biological replicates, indicating stochastic spatial heterogeneity of phage outbreaks. Additionally, proteomic data were used to identify a previously unknown genotypic variant of *Leptospirillum* group II, an indication of selection for a specific *Leptospirillum* group II population in laboratory communities. Our results confirm the importance of pH and related geochemical factors in fine-tuning acidophilic microbial community structure and function at the species and strain level, and demonstrate the broad utility of proteomics in laboratory community studies.**

*The ISME Journal* (2011) 5, 1152–1161; doi:10.1038/ismej.2010.200; published online 13 January 2011

**Subject Category:** integrated genomics and post-genomics approaches in microbial ecology

**Keywords:** acid mine drainage; communities; genotyping; perturbation; proteomics

## Introduction

The application of ecological theory to microbial systems has demonstrated that macro-level ecological concepts can be used to describe microbial distributions and community interactions (Jessup *et al.*, 2004; Kassen and Rainey, 2004; Martiny *et al.*, 2006; Prosser *et al.*, 2007; Green *et al.*, 2008). Low complexity, extremophilic consortia that thrive in acid mine drainage (AMD) environments have been proposed as a model system for the study of natural microbial communities (Deneff *et al.*, 2010b). Ecolo-

gical interactions such as competition, mutualism, predation and synergism have been described in such environments (Johnson, 1998). AMD biofilm communities from the Richmond Mine at Iron Mountain, CA, USA have been well characterized using culture independent techniques (Edwards *et al.*, 1999; Bond *et al.*, 2000a, b; Druschel *et al.*, 2004; Wilmes *et al.*, 2008b), and have also been the subject of intensive genomic and proteomic studies (Tyson *et al.*, 2004; Ram *et al.*, 2005; Lo *et al.*, 2007; Simmons *et al.*, 2008; Deneff *et al.*, 2009), making them ideal for in-depth ecological analyses.

Richmond Mine communities are dominated by chemoautotrophic iron-oxidizing bacteria belonging to the *Leptospirillum* genus. Archaea and other low abundance bacteria colonize biofilms generated by *Leptospirillum* spp. to produce multi-species consortia. Characterization of AMD biofilm

Correspondence: JF Banfield, Department of Earth and Planetary Science, University of California, Berkeley, CA 94720, USA.  
E-mail: jbanfield@berkeley.edu

Received 4 June 2010; revised 5 November 2010; accepted 10 November 2010; published online 13 January 2011

ultrastructure has revealed a community progression over developmental stages (Wilmes *et al.*, 2008b). During early stages of growth, when biofilms are relatively thin, communities are dominated by *Leptospirillum* group II (related to *L. ferriphilum*). At later stages of growth, biofilms are thicker and the communities are more diverse. However, more specific details of ecological interactions and niche partitioning of low abundance bacteria and archaea are unknown.

Reconstructions of composite genomes for *Leptospirillum* group II have revealed two distinct genomic types (referred to as the '5-way CG genomic type' and the 'UBA genomic type'), for which orthologous proteins share ~95% identity on average (Lo *et al.*, 2007). Analysis of environmental metagenomic data has shown that homologous recombination, as well as transposon and phage-mediated insertions or deletions are common sources of variation between the genomic types (Simmons *et al.*, 2008). Although much of the observed variation may be adaptively neutral (Thompson *et al.*, 2005), both gene content and sequence divergence between orthologous proteins have been proposed as mechanisms of niche differentiation (Rocap *et al.*, 2003; Hunt *et al.*, 2008; Wilmes *et al.*, 2008a).

Mass spectrometry-based proteomic analyses can be used to distinguish protein sequence variants in genomically uncharacterized environmental samples, a method known as proteomics-inferred genome typing (PIGT) (Lo *et al.*, 2007). The PIGT approach has been used to distinguish the two 'ancestral' genotypes of *Leptospirillum* group II (5-way CG and UBA) in proteomic datasets, as well as four recombinant genotypes that contain distinct blocks of both the 5-way CG and UBA genomes (Lo *et al.*, 2007; Deneff *et al.*, 2009). Detailed analysis of the distribution and protein expression of *Leptospirillum* group II genotypic variants has revealed differences that were correlated to environmental conditions and biofilm development, confirming the occurrence of strain-level niche partitioning within AMD communities (Deneff *et al.*, 2010a).

Laboratory growth and isolation of acidophilic organisms has been challenging, and many remain uncharacterized in terms of their functional role in community biofilms. Coculturing multi-species consortia from environmental samples has been shown as a strategy to propagate 'unculturable' organisms for laboratory characterization (Kaeberlein *et al.*, 2002). A laboratory community-culturing strategy has been developed for AMD biofilms (Belnap *et al.*, 2010). Using a quantitative proteomic approach, our previous analyses have demonstrated laboratory communities to be functionally similar to a natural sample, including growth of low abundance, non-isolated bacteria and archaea. However, the distribution of specific taxa in laboratory and natural samples is not identical, and is likely influenced by

fine-scale variation of community composition and geochemical conditions.

Additionally, viruses of bacteria and archaea have been predicted to be major drivers of genetic diversity (leading to niche differentiation) (Rodriguez-Valera *et al.*, 2009) and community dynamics in prokaryotic-dominated environments (Breitbart *et al.*, 2004; Danovaro *et al.*, 2008). Viral genomes have been previously assembled and annotated in AMD metagenomic datasets indicating extensive viral diversity and host susceptibility (Andersson and Banfield, 2008). It is likely, then, that phage-driven mortality in AMD biofilm communities may also affect membership and function. However, distinct patterns of phage activity (for example, temporal or geospatial) are yet to be observed.

To investigate the extent to which small changes in environmental conditions influence community membership and function, the responses of laboratory-cultivated AMD biofilm communities maintained at high and low pH were compared. Utilization of community quantitative proteomic methods enabled functional characterization of dominant and low abundance taxa under the different pH conditions. Proteomic datasets were further utilized to identify the *Leptospirillum* group II genotype(s) present in laboratory biofilms, and to observed patterns of phage protein distribution across replicate laboratory communities.

## Methods

### Laboratory cultures

Biofilm communities similar to natural AMD consortia were cultured in laboratory reactors as described previously (Belnap *et al.*, 2010). All reactors were inoculated with 50 ml from a community batch culture originating from a mixture of biofilm samples collected from several different locations within the Richmond Mine (Redding, CA, USA). Communities were grown using an acidophilic growth medium supplemented with  $55.6 \text{ g l}^{-1}$   $\text{FeSO}_4 \cdot 7\text{H}_2\text{O}$ , trace elements, and acidified using  $\text{H}_2\text{SO}_4$  (9K-BR medium, see Belnap *et al.*, 2010). Unless otherwise stated, all chemicals and reagents were supplied by Sigma-Aldrich (Sigma-Aldrich Co., St Louis, MO, USA). No carbon source was provided in the growth medium. Metabolically labeled community samples were grown with  $^{15}\text{N}$ -ammonium sulfate (Isotec, Miamisburg, OH, USA) in place of standard ammonium sulfate. Six replicate biofilm communities, three labeled with  $^{15}\text{N}$ -ammonium sulfate and three unlabeled, were cultured in separate reactors. For initial growth, each reactor reservoir was supplied with pH 1.0 medium. Over a 14-day period, high cell density, multispecies biofilms formed in all reactors, and cellular metabolism gradually increased pH to 1.3–1.5. On day 14, the medium in reactor reservoirs containing  $^{15}\text{N}$ -ammonium sulfate was lowered to pH 0.6 (100% of reservoir volume, or 2L), which

equilibrated at  $\sim 0.85$  in each reactor. Unlabeled and labeled communities were then maintained at the respective pH for a period of 19 days, and solution pH was monitored daily. In all, 50% of the total reservoir and reactor volume for each replicate was replenished with fresh medium on days 0, 5, 9, 13 and 16. On day 19, biofilms were removed from all six reactors, centrifuged for three minutes at 8500 r.p.m. and 4 °C, and cell pellets were immediately frozen at  $-80$  °C in a dry ice/ethanol bath. A single unlabeled high-pH sample and  $^{15}\text{N}$ -labeled low-pH sample were mixed evenly according to biomass for each biological replicate to form three proteomic replicates subsequently used for quantitative proteomics analysis.

#### Microscopy

Aliquots of biofilm samples were preserved in 4% paraformaldehyde and stored at  $-20$  °C in a 1:1 solution of ethanol and phosphate-buffered saline. Fluorescence *in situ* hybridization with lineage-specific probes was carried out on fixed samples as described previously (Amann, 1995; Bond and Banfield, 2001) at 630 times magnification using a Leica DMRX epifluorescence microscope (Leica, Wetzlar, Germany). Specific probes were used to target *Leptospirillum* groups II and III, and remaining taxa were characterized using broad-range bacterial and archaeal probes. For estimation of *Leptospirillum* group III abundance, representative fluorescence *in situ* hybridization images were collected for each of the replicate high and low pH community samples. *Leptospirillum* group III cells were counted in three replicate fields of view ( $>1000$  cells counted per field of view) per image, and converted to a percentage of the total cell count found using the general nucleic acid stain 4',6-diamidino-2-phenylindole. An average percentage of *Leptospirillum* group III cells for high pH and low pH treatments was calculated for the three replicate community samples and differences were tested for significance using a Standard *t*-test ( $P$ -value  $<0.05$ ).

#### Protein extraction and analysis

Whole-cell protein extractions were carried out as described previously (Ram *et al.*, 2005; Lo *et al.*, 2007). Fractions were analyzed in duplicate by two-dimensional liquid chromatography-tandem mass spectrometry using a LTQ-Orbitrap mass spectrometer (Thermo Fisher, San Jose, CA, USA). Peptides and proteins were identified with SEQUEST (Eng *et al.*, 1994) and DTASelect (Tabb *et al.*, 2002) programs using an AMD genomic sequence database (Lo *et al.*, 2007). The ProRata program was used for protein abundance ratio determination and confidence interval evaluation (Pan *et al.*, 2006a,b). Proteins were quantified on the basis of both unique peptides that can be attributed to a single protein and

non-unique peptides that are shared among multiple proteins. Within each replicate dataset, proteins that were detected in only one of the growth conditions (high or low pH sample) were assigned a  $\log_2$  value of  $\pm 7$  (that is, 128 times more abundant in the growth condition for which they were detected). For all proteins, 90% confidence intervals were calculated and used as the range of error of individual  $\log_2$  abundance ratios. Nonunique peptides belonging to *Leptospirillum* group II proteins are assigned to both genomic types of this organism, which are referred to as the '5-way CG genome' and 'UBA genome.' Genotyping analysis (PIGT, see below) indicated more than 90% of unique peptides in laboratory samples originated from the 5-way CG genome (Type I strain, see below); therefore, proteins identified as belonging to *Leptospirillum* group II UBA strain-types were excluded from data analyses (except those within the Type Ib recombination block).

In previous AMD quantitative proteomic experiments, protein  $\log_2$  abundance ratios were normalized by shifting the median of the protein distribution for each taxa to zero, thereby removing effects caused by cell abundance and/or activity differences between samples (Belnap *et al.*, 2010). In this study, the median of individual taxa protein distributions were shifted according to the offset from zero of *Leptospirillum* group II (the organism for which the most proteins are detected) within each proteomic dataset (Supplementary Table 1). Consequently, for low abundance organisms, protein distribution bias to either high or low pH, which could be caused by differences in cell numbers or activity, is evident if the median offset from zero is greater than the *Leptospirillum* group II correction factor. Average  $\log_2$  abundance ratios were generated for proteins identified in at least two of the three biological replicates. Positive  $\log_2$  ratios indicated higher abundance in pH 1.45 and negative values indicated higher abundance in pH 0.85. The 90% confidence intervals were calculated for each average  $\log_2$  ratio. Note that the average dataset from the three replicates was not subjected to further normalization. Proteins with average normalized  $\log_2$  ratios greater than 1 or smaller than  $-1$  ( $>2 \times$  difference) and confidence intervals excluding zero were considered significantly different between samples. All normalized proteomic results are listed in Supplementary Table 7.

For *Leptospirillum* group II, proteins were additionally grouped into functional categories as described previously (Denef *et al.*, 2009), and a one-sample *t*-test or Wilcoxon Rank Sum test was performed using the  $\log_2$ -ratio values to identify categories that were significantly different in either the environmental or laboratory sample ( $P < 0.05$ ).

#### PIGT analysis of *Leptospirillum* group II

Genotyping of *Leptospirillum* group II populations by strain-resolved proteomic-based analyses have

been described in detail previously (Denef *et al.*, 2009). Briefly, the spectral counts for unique and non-unique peptides were tabulated from mass spectral data. The  $\log_2$ -transformed spectral counts of unique peptides were then plotted onto schematic representations of the aligned 5-way CG genome and UBA genome using Circos (<http://mkweb.bcgsc.ca/circos/>) to visualize points of recombination. Using this method, we defined the laboratory genotype using the Type I–VI genotype spectrum defined by Denef *et al.* (2009), in which Type I refers to a nearly pure 5-way CG genome, Type VI refers to a nearly pure UBA genome and Types II–IV contain large genomic blocks of both types.

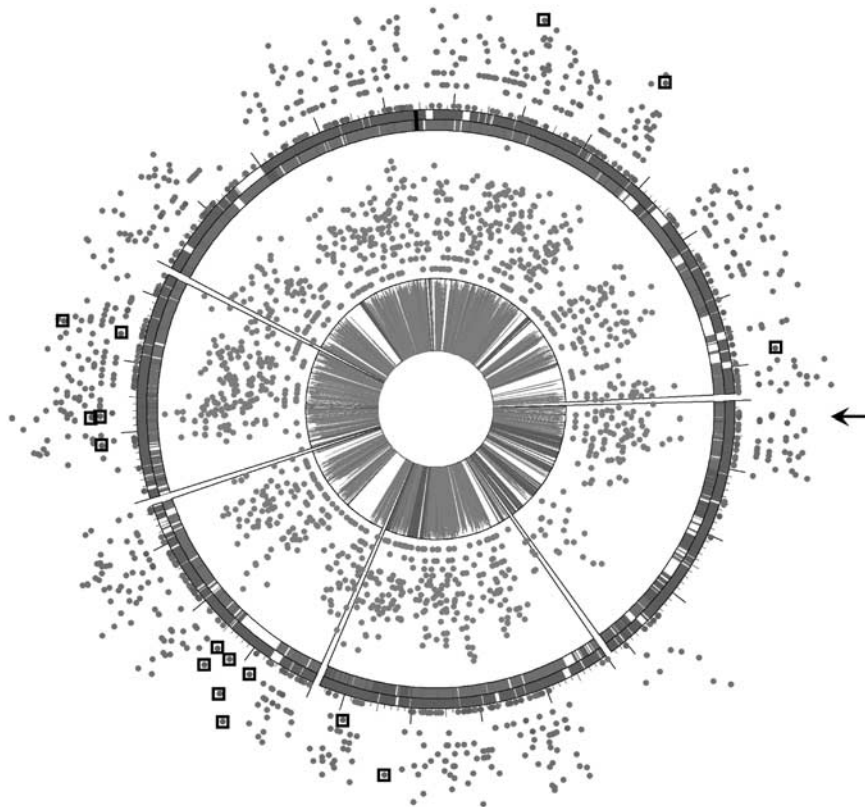
## Results

### *Genotype analysis of the Leptospirillum group II population in laboratory communities*

PIGT analyses for *Leptospirillum* group II were performed using the proteomic datasets for each of the three laboratory replicate comparisons. For all

three proteomic datasets, 94–95% of unique peptides matched the 5-way CG genome, hence the genotype(s) of *Leptospirillum* group II present in laboratory communities is similar to the environmental Type I genotype (predominantly composed of 5-way CG genomic loci) (Figure 1 and Supplementary Figure 1A). Some peptides currently considered unique to the UBA genotype were identified at high abundance. Most of these peptides map to regions of the 5-way CG genome that correspond to sequencing gaps (see boxed proteins corresponding to gaps in red ring, Figure 1), and based on analyses across nearly 30 environmental samples likely represent currently unidentified Type I proteins in the near complete *Leptospirillum* group II 5-way CG population genomic dataset (Denef *et al.*, 2009).

In one small region of the *Leptospirillum* group II genome where 5-way CG genomic data is complete, several abundant unique peptides belonging to the UBA genotype were identified (Figure 1). Thus, we infer the presence of a Type VI recombination block in an otherwise Type I strain. This small, putative recombination block is a distinct feature of the



**Figure 1** PIGT analysis of *Leptospirillum* group II in laboratory proteomic datasets. Unique peptides from all three proteomic replicates were plotted onto aligned genomic representations of *Leptospirillum* group II 5-way CG (red ring) and UBA (blue ring) genomic variants. Purple loci represent regions of 100% amino acid identity, black represents the CRISPR repeat region, and loci for which a homolog does not exist are white. Large tick marks are spaced 100 genes apart. The inner gray ring represents percent amino acid identity between orthologs (indicated by height of tick marks, purple regions equivalent to 100% identical). Gray spots surrounding the inner ring are the total number of peptides detected at each loci. Spots on the outside of the diagram represent the number of unique peptides detected at each loci (red = Type I, blue = Type VI). Unique peptides are plotted on a  $\log_2$  scale, with higher placement indicating higher detection. The arrow indicates a region of unique Type VI peptides consistently detected in the otherwise Type I dominated laboratory genotype. This region likely represents a small recombinant block. Boxes surround other abundant Type VI peptides that lack a Type I orthologue in the 5-way CG genomic dataset (and thus probably represent Type I peptides). The color reproduction of this figure is available on the html full text version of the manuscript.

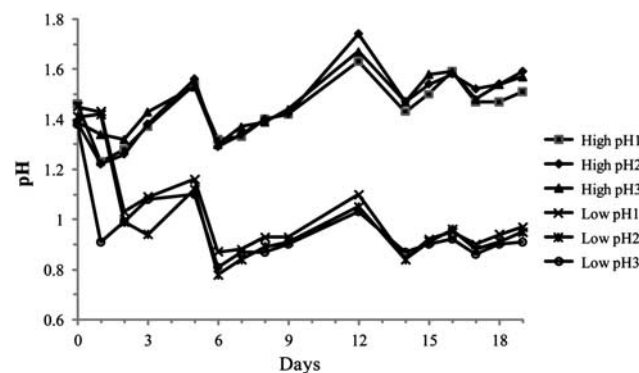


laboratory strain compared with other known 5-way CG strain types (Supplementary Figure 1A). Because of its close similarity to Type I, we refer to this new genotype as Type Ib (Supplementary Figure 2). The Type Ib genotype has not been described previously in environmental samples, but has been identified in an additional laboratory sample for which PIGT analyses were carried out (Supplementary Figure 1B). Genes encoded on the Type VI block within the Type Ib genotype are listed in Supplementary Table 2. In all, 8 of the 14 proteins encoded by genes present in the recombinant block were detected in the proteomic datasets. For several proteins, spectral counts of unique Type VI peptides (UBA genomic type) were two to three times greater than unique Type I spectral counts (Supplementary Table 2). Quantitative comparisons for these proteins indicated similar abundance at high and low pH, suggesting their expression (and the selection for the Type Ib strain) was not pH dependent (Supplementary Table 2).

Unique peptides that matched the UBA genome were also present for additional genomic loci with distinct orthologs in both genomes (blue proteins, Figure 1). However, these peptides were detected at a much lower frequency, possibly indicating a low abundance of a Type VI-dominated strain.

#### Comparison of community function during growth at high and low pH

Average pH values for high-pH communities and low-pH communities were 1.45 and 0.85, respectively, over the course of the 19-day experiment (Figure 2). A total of 2112 proteins were quantified for proteomic replicate 1, 2425 for proteomic replicate 2 and 2085 for proteomic replicate 3 (Table 1). The number of proteins detected for individual taxa in each replicate dataset is tabulated in Table 1. An average  $\log_2$  ratio was calculated for the 2148 proteins that were shared between at least two of the replicates. The abundance ratios for all



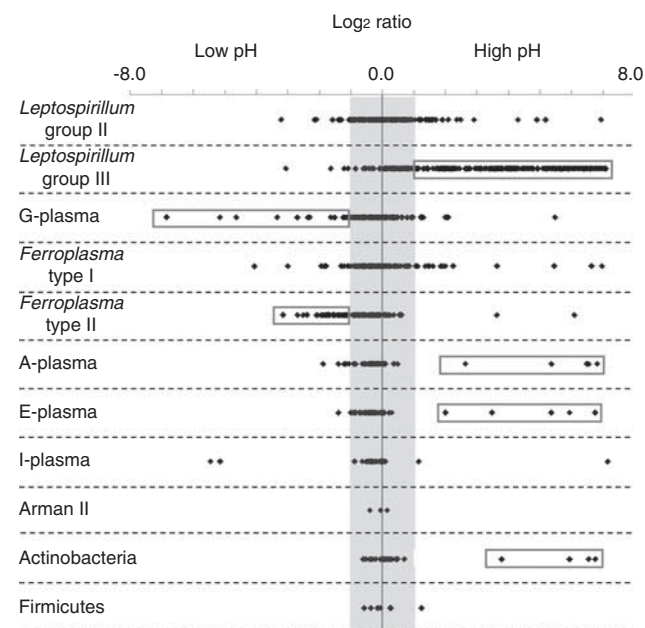
**Figure 2** Solution pH of replicate laboratory reactors. After biofilm establishment at  $\sim$ pH 1.4, three  $^{15}\text{N}$ -labeled reactors were lowered to an average pH of 0.85 (day 0). pH treatments were maintained over a 19-day period, after which communities were sampled for proteomic analyses. Fresh medium was re-supplied on days 5, 9, 13 and 16.

proteins were distinguished by taxa and plotted on a  $\log_2$  scale (Figure 3). For several low abundance organisms, average protein distributions were shifted to either high or low pH, suggesting a growth

**Table 1** Summary of quantified proteins for community comparisons at high and low pH

	Repli- cate 1	Repli- cate 2	Repli- cate 3	Shared
<i>Leptospirillum</i> group II	1050	916	875	946
<i>Leptospirillum</i> group III	201	563	429	310
G-plasma	315	306	266	288
<i>Ferroplasma</i> type II	161	190	190	162
<i>Ferroplasma</i> type I	143	222	145	160
A-plasma	67	64	50	56
E-plasma	57	60	50	45
I-plasma	26	29	21	21
Arman type II	7	15	2	5
Actinobacteria	52	40	37	37
Firmicutes	11	9	8	7
Plasmid	8	5	9	2
Virus	14	6	3	1
Total	2112	2425	2085	2148

For each proteomic replicate, the number of proteins quantified for each taxa is shown. The shared column indicates the number of proteins that were detected in at least two replicates and for which average  $\log_2$  ratios were calculated. Uncharacterized archaeal Thermoplasmatales lineage organisms are designated by letter abbreviations (A, E, G and I-plasma). Arman type II is an archaeal lineage distinct from the Thermoplasmatales.



**Figure 3** Distribution of average protein abundances for quantitative proteomic comparison of communities maintained at high and low pH.  $\log_2$  ratios for all proteins are plotted according to taxa. Positive  $\log_2$  ratio values indicate proteins more abundant in high pH communities; negative values indicate proteins more abundant in low pH communities. The shaded area denotes values between 1 and  $-1$  (within  $2\times$ ), in which proteins are not considered significantly different between high and low pH comparisons. Red boxes highlight proteins from organisms that exhibited a strong response to either high or low pH. The color reproduction of this figure is available on the html full text version of the manuscript.

advantage or strong response to the respective pH condition (Figure 3).

The strongest response to pH was associated with *Leptospirillum* group III. The majority of the 418 *Leptospirillum* group III proteins identified in at least two of the three replicates were more abundant in the high pH communities (Figure 3). Cell counts using fluorescence *in situ* hybridization indicated this organism made up approximately  $6.6 \pm 1.0\%$  of the total cells in high pH communities, compared with approximately  $2.4 \pm 0.9\%$  of the low pH communities. In part, the higher abundance of *Leptospirillum* group III proteins reflects its greater representation in pH 1.45. However, many *Leptospirillum* group III proteins were much more abundant, which cannot be accounted for by differences in cell numbers (that is,  $> 3 \times$ ). Specific proteins from all functional groups were many times more abundant in high pH samples, including proteins that carry out core metabolic processes such as energy conversion, carbohydrate metabolism, transcription, translation, and nucleotide and amino acid biosynthesis (Supplementary Table 3). Only four proteins from this organism were significantly more abundant in low pH conditions (Supplementary Table 6). In addition to greater cell abundance, the proteomic response associated with this organism suggests greater metabolic activity in the higher pH conditions.

Only 30 of 946 *Leptospirillum* group II proteins were significantly different between the two pH conditions. Analysis of functional categories indicated that amino acid transport and metabolism, nucleotide transport and metabolism, and cell wall/membrane/envelope biogenesis were over-represented at high pH (Supplementary Table 4). Only the carbohydrate transport and metabolism category was over-represented at low pH (Supplementary Table 4). Specific *Leptospirillum* group II proteins that were more abundant at high pH included a polysaccharide export protein, and uridine diphosphate-glucuronate 5'-epimerase (a protein putatively involved in the metabolism of sugar components of the cell wall), a periplasmic phosphate binding protein, an important energy conversion cytochrome, an NADH oxidase and two signal transduction proteins (Guanosine-5'-triphosphate pyrophosphokinase and diguanylate cyclase) (Supplementary Table 5). Proteins from this organism that were significantly more abundant at low pH included a protein that catalyzes the first step in the synthesis of the compatible solute ectoine, diamino butyrate-2-oxoglutarate transaminase (Supplementary Table 6). Many others were classified as hypothetical or general function only (Supplementary Table 6).

Several of the low abundance organisms'  $\log_2$  protein distributions were offset from zero, indicating a bias or strong response to either the low or high pH environment (Figure 3). A high number of proteins identified from the archaeal

Thermoplasmatales organism G-plasma were more abundant in low pH communities. These included ribosomal proteins, enzymes involved in energy conversion reactions, as well as carbohydrate transport proteins (Supplementary Table 6). A similar trend was observed for *Ferroplasma* type II (Figure 3). Many of the *Ferroplasma* type II proteins were classified as hypothetical, however, several TCA cycle proteins and the purine biosynthesis protein adenylosuccinate synthase were several times more abundant at low pH (Supplementary Table 6). Few proteins from G-plasma or *Ferroplasma* type II were significantly more abundant in high pH communities (Supplementary Table 5).

In contrast to both G-plasma and *Ferroplasma* type II, *Ferroplasma* type I had a more even distribution of proteins that were significantly more abundant in either condition (7 proteins greater than  $2 \times$  more abundant in low pH vs 12 in high pH; Supplementary Tables 5 and 6). At high pH, abundant proteins included several hypothetical proteins, an amino acid and multidrug transporter, a ribosomal protein and a peroxiredoxin (Supplementary Table 5). At low pH, abundant *Ferroplasma* type I proteins included those belonging to energy conversion pathways (succinate dehydrogenase/fumarate reductase, aerobic-type carbon monoxide dehydrogenases, NAD-dependent aldehyde dehydrogenase), similar to the response of *Ferroplasma* type II (Supplementary Table 6).

For low abundance organisms for which few proteins were detected (A-plasma, E-plasma, I-plasma, Arman type II, Actinobacteria, Firmicutes; Table 1), bias to either the low or high pH condition was ambiguous, and metabolic responses could not be interpreted (Figure 3). However, several extremely abundant proteins (fold change  $> 40 \times$ ) in the high pH conditions were identified for both archaeal taxa A-plasma and E-plasma, as well as the Actinobacteria, and are listed in Supplementary Table 5.

#### Phage protein detection

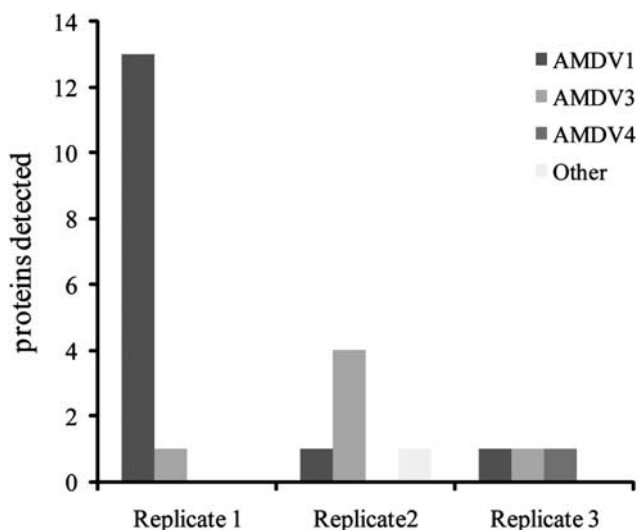
Included in the replicate proteomic datasets are 23 proteins encoded by genomes previously reconstructed for phage of bacteria and viruses of archaea. Surprisingly, the number of phage proteins identified was highly variable across the three biological replicate datasets (each comprising a mixture of labeled and unlabeled proteins). Specifically, 13 proteins from AMDV1 (a virus population that targets *Leptospirillum* groups II and III) were identified in replicate 1, whereas replicates 2 and 3 only had a single protein each (Figure 4).

## Discussion

#### Laboratory selection of near homogeneous

#### *Leptospirillum* group II strain population

Cultivation of AMD biofilm communities in laboratory reactors resulted in selection for a



**Figure 4** Viral proteins detected in replicate proteomic analyses used to compare communities in high and low pH solutions. The number of proteins detected for putative virus types AMDV1, AMDV3, AMDV4 and unclassified viral proteins (other) are shown for each replicate.

*Leptospirillum* group II strain similar to that characterized as Type I (Denef *et al.*, 2009). Low frequency detection of Type VI (UBA genomic-type) peptides identified from proteins encoded throughout the genome could signify the presence of additional strain types at low abundance (Figure 1). Alternatively, Type VI peptides may represent other small recombination points in the Type Ib genome.

Despite inoculation of laboratory reactors with a sample likely containing several *Leptospirillum* group II genotypes, only the Type Ib strain proliferated. Although this strain has not been detected in environmental samples to date, we hypothesize that it may have been present in environmental samples used in original reactor inoculations, but at relatively low abundance levels that prevented detection in previous PIGT analyses (Denef *et al.*, 2009). However, an alternative explanation is that Type Ib arose by recombination between Type I and a UBA-group genotype (Types II–VI) in the laboratory communities. The existence of new recombinant types (either introduced from the environment or formed in the laboratory) is not surprising, given that Simmons *et al.* (2008) detected a variety of low abundance recombination points involving the 5-way CG and UBA *Leptospirillum* group II genomes in the original metagenomic dataset (Tyson *et al.*, 2004).

Laboratory cultivation imposed a selective condition that allowed a normally low abundance strain type to reach high cell densities. Selection might be associated with one or a subset of proteins encoded on the recombinant Type VI block. Abundance ratios indicated approximately equal proportions of these proteins in both high and low pH datasets indicating

pH did not influence their expression. It is likely that selection of the Type Ib strain was because of other factors associated with laboratory cultivation. Other proteins not identified because of the lack of the reference sequence in the proteomic database may have also been important for laboratory selection of a single strain. Regardless, selection of a single genotype in laboratory biofilms is consistent with specific functional differences between recombinant genotypes of *Leptospirillum* group II in environmental samples (Denef *et al.*, 2010a).

#### *Response of Leptospirillum spp. to high and low solution pH*

Based on higher cell counts and a strong protein distribution bias to high pH for *Leptospirillum* group III (Figure 3), solution pH may be a significant factor that affects the distribution and metabolic activity of *Leptospirillum* group III in natural communities. Inhibition at low pH may contribute to the low abundance of *Leptospirillum* group III in environmental biofilms (Wilmes *et al.*, 2008b; Belnap *et al.*, 2010), where the solution pH is generally less than 1.0. As this organism has been shown to fix nitrogen and may be considered a keystone species (Tyson *et al.*, 2005), its distribution in natural AMD communities may influence growth and metabolism of other community members.

The majority of *Leptospirillum* group II proteins had similar abundance between the two pH conditions (Figure 3), likely indicating comparable growth in a broad pH range. However, specific proteins and analysis of functional categories indicated *Leptospirillum* group II responded differently to pH 1.45 and 0.85. The functional categories distributions that were overrepresented in high pH may suggest increased metabolic activity in this condition. Increased metabolic activity is also supported by the high abundance of cytochrome 572 (Supplementary Table 5), a protein involved in iron oxidation (Jeans *et al.*, 2008). Additionally, a periplasmic phosphate binding protein more abundant in high pH (Supplementary Table 5), possibly expressed as a response to phosphate limitation, could also be a result of increased metabolic processes (for example, energy conversion and nucleotide biosynthesis). An abundant polysaccharide export protein at high pH (Supplementary Table 5) suggests increased biopolymer production and secretion; functions that could enhance biofilm formation. Biofilm formation could have a profound impact on many other AMD taxa that colonize, and likely metabolize, exopolysaccharides generated by *Leptospirillum* group II.

An abundant *Leptospirillum* group II protein at low pH, diaminobutyrate-2-oxoglutarate transaminase (EctB) (Supplementary Table 6), is putatively involved in the first step of ectoine synthesis (Louis and Galinski, 1997). Production of ectoine, a compatible solute potentially used to balance osmotic



forces in ion-rich solutions, suggests greater osmotic stress during growth in more acidic solutions.

#### Functional characterization of low abundance taxa

Low abundance Thermoplasmatales lineage archaea and several non-*Leptospirillum* bacteria have been predicted to be heterotrophs (Tyson *et al.*, 2004). It is probable that specific organisms occupy specific niches, which can be defined by both geochemical and biological factors. Utilization of a laboratory community culturing system enabled the manipulation of one specific geochemical parameter, to which the low abundance organisms had varying response (Figure 3). Although definitive functional assessment of low abundance organisms is limited by shallow proteomic sampling, manipulation of pH has provided a glimpse of potential ecological distinctions among these organisms.

Comparison of community growth at high and low pH resulted in a strong response at low pH for both G-plasma and *Ferroplasma* type II. The abundance of energy conversion proteins (for both organisms) as well as ribosomal proteins, a sugar transporter, and an amino acid biosynthesis protein (for G-plasma) probably indicate a growth preference in this condition (Supplementary Table 6). Low solution pH has been suggested previously to select for higher proportions of archaea in Richmond Mine communities (Bond *et al.*, 2000a), possibly because of their highly proton resistant tetra-ether-linked membranes (Macalady *et al.*, 2004). Passive resistance to a highly acidic external environment may provide an energetic advantage compared with bacterial species, such as *Leptospirillum* group III. Interestingly, the response of *Ferroplasma* type I was not identical to the response of *Ferroplasma* type II (Figure 3), despite their close phylogenetic relationship (Eppley *et al.*, 2007). Several *Ferroplasma* type I proteins abundant at high pH were indicative of growth and respiration (Supplementary Table 5). Although the laboratory isolate *Ferroplasma acidarmanus*, a representative of the *Ferroplasma* type I group, has been shown to grow in solution pH ranging from 0 to 1.5 (Edwards *et al.*, 2000), growth of this organism in batch culture is inhibited at pH below ~0.7 (data not shown). Within environmental biofilms, it is perhaps the case that *Ferroplasma* types I and II are partitioned along pH gradients, effectively minimizing competition.

Despite abundant proteins in high or low pH conditions, interpretation of the metabolism of other low abundance taxa is difficult. Extremely abundant proteins in high pH for A-plasma, E-plasma, and the Actinobacteria do not necessarily indicate a growth preference or stress response. However, an Actinobacteria cholesterol biosynthesis protein (phytoene squalene synthetase) that was extremely abundant at high pH (Supplementary Table 5) may suggest these organisms respond to pH changes by altering membrane structure.

#### Variation of phage protein abundance in replicate communities

Despite technical difficulties associated with identification of viral proteins (that is, incomplete viral metagenomic data and rapid mutation of viral genes), many were identified. The total number of community proteins detected in all three replicates was similar (Table 1), indicating the differences in protein counts for AMDV1 are not the result of technical variation. As reactors were given identical starting inoculum, all should have received approximately equal numbers of viral particles or cells infected with AMDV1. The high abundance of AMDV1 proteins in a single replicate is suggestive of a specific viral bloom. These results may indicate a stochastic nature of viral infection that occurs on relatively small scales (that is, within individual laboratory reactors). Increased detection of viral proteins would necessitate lytic infection of host cells. Intriguingly, approximately half the number of *Leptospirillum* group III proteins were detected in proteomic replicate 1 compared with both replicates 2 and 3 (Table 1). It is possible, this discrepancy is related to an AMDV1 outbreak, as AMDV1 is predicted to target *Leptospirillum* group III (Anderson and Banfield, 2008). However, a direct response to phage infection is not clear from *Leptospirillum* group III proteomic data.

## Conclusion

In the current study, we utilized laboratory growth of multi-species biofilm communities to examine both membership and functional response to a specific geochemical perturbation. The findings indicate differential responses of community members to solution pH, and help to define the ecological niches of closely associated bacteria and archaea. The propagation of a single *Leptospirillum* group II genotype in laboratory communities supports environmental observations for functional partitioning of *Leptospirillum* group II strains (Denef *et al.*, 2010a), and indicates environmental heterogeneity in natural microbial systems may allow for maintenance of variant alleles that originate through mutation or recombination and confer niche adaptations.

## Acknowledgements

Mr Ted Arman (President, Iron Mountain Mines) and Dr Richard Sugarek are thanked for site access and other assistance. Dr Paul Wilmes and Dr Ryan Mueller are thanked for helpful discussions. This research was supported by the US Department of Energy, Office of Biological and Environmental Research through the Genomic Science Program (contract numbers DE-FG02-05ER64134, DE-SC0004665 and DE-SC0004918), Office of Advanced Scientific Computing Research through the SciDAC Program, the NSF Biocomplexity Program and the NASA Astrobiology Institute.



## References

- Amann RI. (1995). Fluorescently labelled, rRNA-targeted oligonucleotide probes in the study of microbial ecology. *Mol Ecol* **4**: 543–554.
- Andersson AF, Banfield JF. (2008). Virus population dynamics and acquired virus resistance in natural microbial communities. *Science* **320**: 1047–1050.
- Belnap CP, Pan C, VerBerkmoes NC, Power ME, Samatova NF, Carver RL *et al.* (2010). Cultivation and quantitative proteomic analyses of acidophilic microbial communities. *ISME J* **4**: 520–530.
- Bond PL, Banfield JF. (2001). Design and performance of rRNA targeted oligonucleotide probes for *in situ* detection and phylogenetic identification of microorganisms inhabiting acid mine drainage environments. *Microb Ecol* **2**: 149–161.
- Bond PL, Druschel GK, Banfield JF. (2000a). Comparison of acid mine drainage microbial communities in physically and geochemically distinct ecosystems. *Appl Environ Microbiol* **66**: 4962–4971.
- Bond PL, Smriga SP, Banfield JF. (2000b). Phylogeny of microorganisms populating a thick, subaerial, predominantly lithotrophic biofilm at an extreme acid mine drainage site. *Appl Environ Microbiol* **66**: 3842–3849.
- Breitbart M, Wegley L, Leeds S, Schoenfeld T, Rohwer F. (2004). Phage community dynamics in hot springs. *Appl Environ Microbiol* **70**: 1633–1640.
- Danovaro R, Dell'Anno A, Corinaldesi C, Magagnini M, Noble R, Tamburini C *et al.* (2008). Major viral impact on the functioning of benthic deep-sea ecosystems. *Nature* **454**: 1084–1087.
- Denef VJ, Kalnejais LH, Mueller RS, Wilmes P, Baker BJ, Thomas BC *et al.* (2010a). Proteogenomic basis for ecological divergence of closely related bacteria in natural acidophilic microbial communities. *Proc Natl Acad Sci* **107**: 2383–2390.
- Denef VJ, Mueller RS, Banfield JF. (2010b). AMD biofilms: using model communities to study microbial evolution and ecological complexity in nature. *ISME J* **4**: 599–610.
- Denef VJ, VerBerkmoes NC, Shah MB, Abraham P, Lefsrud M, Hettich RL *et al.* (2009). Proteomics-inferred genome typing (PIGT) demonstrates inter-population recombination as a strategy for environmental adaptation. *Environ Microbiol* **11**: 313–325.
- Druschel G, Baker B, Gihring T, Banfield J. (2004). Acid mine drainage biogeochemistry at Iron Mountain, California. *Geochemical Trans* **5**: 13.
- Edwards KJ, Bond PL, Gihring TM, Banfield JF. (2000). An archaeal iron-oxidizing extreme acidophile important in acid mine drainage. *Science* **287**: 1796–1799.
- Edwards KJ, Gihring TM, Banfield JF. (1999). Seasonal variations in microbial populations and environmental conditions in an extreme acid mine drainage environment. *Appl Environ Microbiol* **65**: 3627–3632.
- Eng JK, McCormack AL, Yates III JR. (1994). An approach to correlate tandem mass spectral data of peptides with amino acid sequences in a protein database. *J Am Soc Mass Spectrom* **5**: 976–989.
- Eppley JM, Tyson GW, Getz WM, Banfield JF. (2007). Genetic exchange across a species boundary in the archaeal genus *Ferroplasma*. *Genetics* **177**: 407–416.
- Green JL, Bohannon BJM, Whitaker RJ. (2008). Microbial Biogeography: From Taxonomy to Traits. *Science* **320**: 1039–1043.
- Hunt DE, David LA, Gevers D, Preheim SP, Alm EJ, Polz MF. (2008). Resource partitioning and sympatric differentiation among closely related bacterioplankton. *Science* **320**: 1081–1085.
- Jeans C, Singer SW, Chan CS, VerBerkmoes NC, Shah M, Hettich RL *et al.* (2008). Cytochrome 572 is a conspicuous membrane protein with iron oxidation activity purified directly from a natural acidophilic microbial community. *ISME J* **2**: 542–550.
- Jessup CM, Kassen R, Forde SE, Kerr B, Buckling A, Rainey PB *et al.* (2004). Big questions, small worlds: microbial model systems in ecology. *Trends in Ecology & Evolution* **19**: 189–197.
- Johnson DB. (1998). Biodiversity and ecology of acidophilic microorganisms. *FEMS Microbiology Ecology* **27**: 307–317.
- Kaeberlein T, Lewis K, Epstein SS. (2002). Isolating 'uncultivable' microorganisms in pure culture in a simulated natural environment. *Science* **296**: 1127–1129.
- Kassen R, Rainey PB. (2004). The ecology and genetics of microbial diversity. *Ann Rev Microbiol* **58**: 207.
- Lo I, Denef VJ, VerBerkmoes NC, Shah MB, Goltsman D, DiBartolo G *et al.* (2007). Strain-resolved community proteomics reveals recombining genomes of acidophilic bacteria. *Nature* **446**: 537–541.
- Louis P, Galinski EA. (1997). Characterization of genes for the biosynthesis of the compatible solute ectoine from *Marinococcus halophilus* and osmoregulated expression in *Escherichia coli*. *Microbiology* **143**: 1141–1149.
- Macalady JL, Vestling MM, Baumler D, Boekelheide N, Kaspar CW, Banfield JF. (2004). Tetraether-linked membrane monolayers in *Ferroplasma* spp: a key to survival in acid. *Extremophiles* **8**: 1433–1490.
- Martiny JBH, Bohannon BJM, Brown JH, Colwell RK, Fuhrman JA, Green JL *et al.* (2006). Microbial biogeography: putting microorganisms on the map. *Nat Rev Micro* **4**: 102–112.
- Pan C, Kora G, McDonald WH, Tabb DL, VerBerkmoes NC, Hurst GB *et al.* (2006a). ProRata: A quantitative proteomics program for accurate protein abundance ratio estimation with confidence interval evaluation. *Anal Chem* **78**: 7121–7131.
- Pan C, Kora G, Tabb DL, Pelletier DA, McDonald WH, Hurst GB *et al.* (2006b). Robust estimation of peptide abundance ratios and rigorous scoring of their variability and bias in quantitative shotgun proteomics. *Anal Chem* **78**: 7110–7120.
- Prosser JI, Bohannon BJM, Curtis TP, Ellis RJ, Firestone MK, Freckleton RP *et al.* (2007). The role of ecological theory in microbial ecology. *Nat Rev Micro* **5**: 384–392.
- Ram RJ, VerBerkmoes NC, Thelen MP, Tyson GW, Baker BJ, Blake II RC *et al.* (2005). Community proteomics of a natural microbial biofilm. *Science* **308**: 1915–1920.
- Rocap G, Larimer FW, Lamerdin J, Malfatti S, Chain P, Ahlgren NA *et al.* (2003). Genome divergence in two *Prochlorococcus* ecotypes reflects oceanic niche differentiation. *Nature* **424**: 1042–1047.
- Rodriguez-Valera F, Martin-Cuadrado A-B, Rodriguez-Brito B, Pasic L, Thingstad TF, Rohwer F *et al.* (2009). Explaining microbial population genomics through phage predation. *Nat Rev Micro* **7**: 828–836.
- Simmons SL, DiBartolo G, Denef VJ, Goltsman DSA, Thelen MP, Banfield JF. (2008). Population genomic analysis of strain variation in *Leptospirillum* Group II

- bacteria involved in acid mine drainage formation. *PLoS Biology* **6**: e177.
- Tabb DL, McDonald WH, Yates III JR. (2002). DTASelect and Contrast: Tools for assembling and comparing protein identifications from shotgun proteomics. *J Proteome Res* **1**: 21–26.
- Thompson JR, Pacocha S, Pharino C, Klepac-Ceraj V, Hunt DE, Benoit J *et al.* (2005). Genotypic diversity within a natural coastal bacterioplankton population. *Science* **307**: 1311–1313.
- Tyson GW, Chapman J, Hugenholtz P, Allen EE, Ram RJ, Richardson PM *et al.* (2004). Community structure and metabolism through reconstruction of microbial genomes from the environment. *Nature* **428**: 37–43.
- Tyson GW, Lo I, Baker BJ, Allen EE, Hugenholtz P, Banfield JF. (2005). Genome-directed isolation of the key nitrogen fixer *Leptospirillum ferrodiazotrophum* sp. nov. from an acidophilic microbial community. *Appl Environ Microbiol* **71**: 6319–6324.
- Wilmes P, Andersson AF, Lefsrud MG, Wexler M, Shah M, Zhang B *et al.* (2008a). Community proteogenomics highlights microbial strain-variant protein expression within activated sludge performing enhanced biological phosphorus removal. *ISME J* **2**: 853–864.
- Wilmes P, Remis JP, Hwang M, Auer M, Thelen MP, Banfield JF. (2008b). Natural acidophilic biofilm communities reflect distinct organismal and functional organization. *ISME J* **3**: 266–270.

Supplementary Information accompanies the paper on The ISME Journal website (<http://www.nature.com/ismej>)