

# Regulation and function of IL-17A- and IL-22-producing $\gamma\delta$ T cells

Kristin J. Ness-Schwickerath · Craig T. Morita

Received: 1 April 2011 / Revised: 19 April 2011 / Accepted: 20 April 2011 / Published online: 15 May 2011  
© Springer Basel AG 2011

**Abstract** The regulation of IL-17A and IL-22 production differs between human and murine  $\gamma\delta$  T cells. We find that human  $\gamma\delta$  T cells expressing V $\gamma$ 2V $\delta$ 2 T cell receptors are peripherally polarized to produce IL-17A or IL-22, much like CD4  $\alpha\beta$  Th17 T cells. This requires IL-6, IL-1 $\beta$ , and TGF- $\beta$ , whereas expansion and maintenance requires IL-23, IL-1 $\beta$ , and TGF- $\beta$ . In contrast, IL-17A and IL-22 production by murine  $\gamma\delta$  T cells is innately programmed during thymic ontogeny but requires IL-23 and IL-1 $\beta$  for maintenance. Murine  $\gamma\delta$  cells producing IL-17A and IL-22 play important roles in microbial, autoimmune, and inflammatory responses. However, the roles played by human IL-17A- and IL-22-producing  $\gamma\delta$  T cells are less clear but are also likely to be important. These observations highlight differences between humans and murine  $\gamma\delta$  T cells and underscore the importance of IL-17A- and IL-22-producing  $\gamma\delta$  T cells.

**Keywords** Interleukin-17A · Interleukin-22 ·  $\gamma\delta$  T cell · V $\gamma$ 2V $\delta$ 2 T cells · Isoprenoid metabolism

## Abbreviations

APC	Antigen-presenting cell
AHR	Aryl hydrocarbon receptor
CIA	Collagen-induced arthritis
DETC	Dendritic epidermal T cells
EAE	Experimental autoimmune encephalomyelitis
FICZ	6-Formylindolo[3,2- <i>b</i> ]carbazole

HMBPP	( <i>E</i> )-4-Hydroxy-3-methyl-but-2-enyl pyrophosphate
IL	Interleukin
IPP	Isopentenyl pyrophosphate
MHC	Major histocompatibility complex
MMP	Matrix metalloproteinase
NKT	Natural killer T
ROR	Retinoid-related orphan receptor
STAT	Signal transducer and activator of transcription
TCR	T cell antigen receptor
TLR	Toll-like receptor

## Introduction

$\gamma\delta$  T cells have properties of both innate and adaptive immune cells. Although expressing adaptive T cell antigen receptors (TCRs) by rearranging V, D (for the  $\delta$  chain), and J gene segments, human and mouse  $\gamma\delta$  T cells utilize a limited set of V $\gamma$  and V $\delta$  genes. In cases where the  $\gamma\delta$  ligands and/or presenting molecules have been identified, they have been found to be ubiquitous nonpeptide compounds [such as lipids or (*E*)-4-hydroxy-3-methyl-but-2-enyl pyrophosphate (HMBPP)] presented by major histocompatibility complex (MHC) class Ib molecules such as CD1 or by an unknown presenting molecule (for phosphoantigens). In other cases, the  $\gamma\delta$  T cells do not recognize an exogenous or endogenous antigen at all—instead they directly recognize an MHC class Ib molecule, such as H-2T or MICA/MICB. In these ways, recognition by  $\gamma\delta$  TCRs more resembles recognition of nonpeptide compounds by pattern recognition receptors than the recognition by conventional  $\alpha\beta$  TCRs of peptide antigens presented by MHC class I or II molecules.

K. J. Ness-Schwickerath · C. T. Morita (✉)  
Division of Immunology, Department of Internal Medicine  
and the Interdisciplinary Graduate Program in Immunology,  
University of Iowa Carver College of Medicine, EMRB 400F,  
Iowa City, IA 52242, USA  
e-mail: Craig-Morita@uiowa.edu

Despite the identification of  $\gamma\delta$  T cells in 1986 [1], major questions still remain unanswered about their functional roles. Although normally constituting a small proportion of total T cells in humans and mice, certain infections or other stimuli can expand  $\gamma\delta$  T cells to high levels. Also, in many cases  $\gamma\delta$  T cells express invariant TCRs or TCRs with restricted V gene diversity, resulting in high frequencies of T cells with a defined specificity (although largely unknown for murine  $\gamma\delta$  T cells). Moreover, these invariant  $\gamma\delta$  T cells can be highly enriched at specific anatomic locations. From the study of other unconventional T cells, such as invariant natural killer  $\alpha\beta$  T (iNKT) cells that recognize lipids presented by CD1d [2, 3], it is clear that small populations of T cells that respond early during immune responses can greatly influence the eventual outcome.

Discoveries over the last decade have now defined a new lineage of T cells—the Th17 lineage—that produces IL-17A, IL-17F, and IL-22. Through studies of the role of IL-23 in autoimmune diseases, it became clear that deletion of the shared IL-12 $\beta$  chain ameliorated disease because of the loss of IL-23 function, not IL-12 function, and that, in most cases, traditional Th1 cells producing IFN- $\gamma$  did not cause autoimmune pathology. This rapidly led to the delineation of the Th17 differentiation schema with identification of the cytokines and transcription factors involved (detailed below). Members of the IL-17 cytokine family (IL-17A through IL-17F) are proinflammatory cytokines that possess a diverse array of functions ranging from neutrophil recruitment to induction of wound repair and tissue remodeling that begin to function early in responses. Similarly, IL-22 can also mediate inflammation and stimulate the production of antimicrobial peptides, and plays a prominent role in skin inflammation and repair.

Although initial studies focused on Th17 and Th22 CD4  $\alpha\beta$  T cells, Th17  $\alpha\beta$  cells require time to develop and, therefore, would not be available during the crucial early phases of immune responses (within hours) where IL-17A plays critical roles in recruiting neutrophils to sites of infection and in initiating inflammatory responses. In these situations,  $\gamma\delta$  T cells, other innate lymphocytes (such as iNKT cells and lymphoid tissue inducer cells), Paneth cells, and neutrophils play sentinel functions by releasing IL-17A [4].  $\gamma\delta$  T cells are important sources of IL-17A and IL-22 during infections and autoimmune diseases, and secrete IL-17A earlier in disease than conventional CD4 or CD8  $\alpha\beta$  T cells. For example, in murine tuberculosis,  $\gamma\delta$  T cell production of IL-17A actually exceeds that of Th17 cells [5]. Furthermore, murine  $\gamma\delta$  T cells can produce IL-17A, IL-22, and IL-21 in response to IL-23 and IL-1 $\beta$  without exposure to exogenous antigens [6] or with exposure only to toll-like receptor (TLR) and dectin-1 ligands [7, 8].

From a therapeutic perspective, it is essential to determine the role played by these cells in disease as well as the mechanisms regulating their development. Moreover, although it is clear that IL-17A-producing  $\gamma\delta$  T cells are important in mice and that they exist in humans [9], little is known about the roles of human IL-17A-producing  $\gamma\delta$  T cells in infections and autoimmune diseases. In this review, we first cover the basic differentiation scheme of conventional T cells, including recently described Th17 T cells, then discuss the regulation and function of IL-17A and IL-22 production by unconventional  $\gamma\delta$  T cells in humans and in mice.

### Biology of IL-17A and IL-22

IL-17A is a multifactorial cytokine, which promotes inflammation. It does this by increasing production of inflammatory cytokines, chemokines, matrix remodeling proteins, adhesion molecules, antimicrobials, and acute phase reactants. The major consequence of IL-17A signaling is the recruitment of neutrophils to areas of inflammation.

Because the IL-17A receptor (IL-17RA) is expressed ubiquitously throughout the body, virtually every cell in the body can participate in IL-17A-mediated inflammation. The principle effect of IL-17A is propagation of proinflammatory cytokines; for example, fibroblasts and epithelial cells respond to IL-17A by producing IL-6 and G-CSF [10] as well as the chemokines IL-8/CXCL8, CXCL1, CXCL2, CCL20, CCL2, and CCL7 [11–14]. IL-17A signaling also induces the expression of matrix metalloproteinases (MMP) such as MMP-1 [15], -3 [16, 17], -9 [18], and -13 [17, 19], and aggrecanase-1 [17]. MMPs are involved in tissue remodeling, and can contribute to tissue repair or tissue destruction. IL-17A also stimulates the production of receptor activator of nuclear factor kappa-B ligand (RANKL, also known as TNFSF11), a key stimulator of osteoclast differentiation and activation for bone resorption [20].

IL-17A also induces endothelial cells to upregulate the adhesion molecules E-selectin, VCAM-1 and ICAM-1, which enable neutrophils and other cells responding to the proinflammatory cytokines to exit the vasculature [21]. IL-17A also boosts mucosal immunity by induction of antimicrobials, such as the  $\beta$ -defensins and mucins, which are rapidly produced by airway epithelial cells in response to IL-17A [22, 23]. Lastly, IL-17A boosts systemic innate immunity through the induction of acute phase reactants, produced by the liver. One such reactant, C-reactive protein [24], is directly released by hepatocytes treated with IL-17A and functions to activate the complement system.

IL-17A signaling also acts at the molecular level to stabilize mRNA transcripts within target cells. This is achieved through activation of the MAPK pathway and targets mRNA transcripts containing Au-rich elements in myeloid cells. Examples of such transcripts include *Cxcl-1* [25], *Il-6* [26, 27], *Il-8* [28], and *G-csf* [29]. IL-22 is often produced alongside IL-17A. IL-22 acts on non-immune cells, specifically epithelial cells and other cells of the skin, gut, lungs, and kidneys. Similar to IL-17A, IL-22 induces antimicrobial peptides, acute phase reactants, and MMPs, but uniquely mediates re-epithelialization and inhibition of keratinocyte differentiation [30–32].

### Lineage commitment and differentiation of conventional $\alpha\beta$ T cells: what lessons can we learn for $\gamma\delta$ T cells?

To differentiate conventional naive  $\alpha\beta$  T cells from memory T cells, naive CD4  $\alpha\beta$  T cells must be exposed to their peptide antigens bound to MHC class II molecules while naive CD8  $\alpha\beta$  T cells must be exposed to their peptide antigens bound to MHC class I molecules. This process is generally initiated by professional antigen-presenting cells (APC) that express not only the MHC molecules with bound peptide antigens, but also costimulatory ligands such as CD80 (B7-1) and CD86 (B7-2). Engagement of other receptors expressed on T cells such as the CD4 and CD8 accessory molecules, costimulatory and inhibitory receptors (such as CD28, CTLA-4, and ICAM), CD2 and SLAM family receptors, TNF-family receptors (such as CD27), and integrins (such as LFA-1), to their ligands also enhances or are required for naive T cell activation. The binding of the  $\alpha\beta$  TCR to its cognate MHC-peptide antigen along with the other receptor interactions activates the T cell and converts it to a memory (educated) T cell. The affinity of the MHC-peptide complex for the TCR and the length of time that the TCR is bound also affect T cell differentiation and function.

While converting to memory T cells, naive T cells commit to different functional lineages. There is a strong contribution to function that is determined by the expression, or lack of expression (in the case of  $\gamma\delta$  and innate  $\alpha\beta$  T cells), of CD4 and CD8 accessory receptors on the naive T cells. Thus, expression of the CD4, CD8 $\alpha\beta$  heterodimer, CD8 $\alpha\alpha$  homodimer, or the lack of expression of CD4<sup>+</sup>CD8<sup>-</sup> in both  $\alpha\beta$  and  $\gamma\delta$  T cells delineates (or is a marker for) some of the functional capabilities of the cells, principally cytotoxicity versus helper activity.

During peripheral conversion of naive to memory, the types of cytokines produced by the memory T cell (Th1, Th2, Th9, Th17, Th22, T<sub>FH</sub>, etc.) depend on the type of

APC, the cytokines present during activation, and the receptors/ligands expressed by the APC. In turn, the types of APC and surrounding cytokines are strongly dependent on the triggering of innate receptors [TLRs, nucleotide-binding oligomerization domain-containing proteins (NODs), nucleotide-binding domain leucine-rich repeat containing NOD-like receptors, mannose receptors, etc.] by pathogen-associated molecular patterns associated with the antigen source (e.g. viral, bacterial, or parasitic infections). These innate sensors direct T cell differentiation by engaging innate receptors on APC and surrounding cells which, in turn, stimulates the expression of specific cellular ligands and cytokines. Innate signals can also direct T cell differentiation by engaging innate receptors expressed by the T cells themselves. Therefore, the types of innate receptors engaged by the pathogen-associated molecular patterns play a major role in determining the downstream lineage commitment of T cells.

The cytokines and receptor–ligand interactions signal naive T cells to increase production or activity of various transcriptional activators/suppressors that then turn on and off genes to commit the T cells to different functional lineages. Then epigenetic changes serve to firmly commit the T cells to a particular functional lineage in many but not all cases. Depending on the number of times the T cells are activated through their TCRs, the number of cell divisions they undergo, and the conditions under which they are activated (i.e. surrounding cytokines and receptor ligand interactions), the memory T cells then undergo progressive differentiation to a more effector/terminally differentiated state with the associated loss or gain of various surface receptors and effector molecules.

The challenge of studying memory and lineage commitment of  $\gamma\delta$  T cells and unconventional  $\alpha\beta$  T cells is that, in many cases, the TCRs of these cells function more like pattern recognition receptors than foreign antigen receptors. That is, the antigens recognized by  $\gamma\delta$  T cells so far have been either nonpeptide conserved molecules, such as prenyl pyrophosphate isoprenoid metabolites and lipids, that are expressed by a variety of pathogens and have mammalian homologs, or endogenous self proteins (such as MICA/MICB, CD1, or H-2T MHC class Ib molecules). The presence of these self-ligands or ubiquitous nonpeptide antigens can rapidly convert naive  $\gamma\delta$  T cells into memory cells. Exposure to self-ligands may explain why many murine T cell V gene subsets acquire “memory” T cell phenotypes and commit to a functional lineage in the thymus. In contrast, although acquisition of a “memory” phenotype can take place in the thymus, many human neonatal V $\gamma$ 2V $\delta$ 2 T cells exhibit naive phenotypes. In this case, commitment by human V $\gamma$ 2V $\delta$ 2 T cells to T $\gamma\delta$ 17 or other lineages can take place in the periphery, as for most  $\alpha\beta$  T cells.

## Differentiation of Th17 CD4 $\alpha\beta$ T cells

When considering the commitment of  $\gamma\delta$  T cells to the Th17 lineage, it is useful to consider the requirements for the differentiation of naive CD4  $\alpha\beta$  T cells to Th17 cells that has been extensively studied in both humans and mice [33].

Th17 differentiation begins with the ligation of the TCR in the presence of IL-6 and/or IL-21. This activates STAT3, which induces and increases expression of the master transcription factor, retinoid-related orphan receptor  $\gamma$ t (ROR $\gamma$ t, produced from the *RORC* gene) [34], and/or ROR $\alpha$  (produced from the *RORA* gene) [35]. ROR $\gamma$ t and ROR $\alpha$  are key transcription factors required for IL-17A and IL-17F production. STAT3, in the presence of ROR $\gamma$ t, binds to the *IL17A* and *IL17F* promoters [36], initiating IL-17A and IL-17AF mRNA production. IL-1 $\beta$ , through induction of IRF4, appears to stabilize the Th17 phenotype [37, 38]. Additionally, the *RUNX1* transcription factor may further promote the differentiation of Th17 cells since it upregulates ROR $\gamma$ t expression and *IL17A* transcription [39]. Within these developing Th17 T cells, IL-6 also induces expression of IL-23R [40]. This enables further STAT3 signaling through the binding of IL-23 to the IL-23R. Continued IL-23/IL-23R signaling through STAT3 is required by committed Th17 precursors for terminal differentiation of these cells into effector Th17 cells and maintenance of their phenotype in vivo [41]. In mice, TGF- $\beta$  appears to be required to maximally differentiate naive cells into Th17 cells [42]. TGF- $\beta$  has been suggested to indirectly suppress Th1 and Th2 differentiation through inhibition of STAT4 and GATA-3 transcription factors, respectively [43]. Human Th17 CD4  $\alpha\beta$  T cells also require TGF- $\beta$  for maximal differentiation of Th17 cells [44–46] probably through a similar mechanism [47]. Thus, triggering naive CD4  $\alpha\beta$  T cells with MHC/peptide antigens in the presence of IL-6 and/or IL-21, IL-1 $\beta$ , and TGF- $\beta$  directs their differentiation to the Th17 lineage. IL-23 serves to reinforce and maintain this lineage commitment.

## Human IL-17A-producing $\gamma\delta$ T cells

Human  $\gamma\delta$  V gene subsets: expansion of V $\gamma$ 2V $\delta$ 2 T cells in infancy driven by microbial expression of HMBPP and other phosphoantigens

Humans express six functional V $\gamma$  gene segments and three major V $\delta$  gene segments. Five of the V $\gamma$  gene segments (V $\gamma$ 1.2, V $\gamma$ 1.3, V $\gamma$ 1.4, V $\gamma$ 1.5, and V $\gamma$ 1.8; also termed V $\gamma$ 2, V $\gamma$ 3, V $\gamma$ 4, V $\gamma$ 5, and V $\gamma$ 8) belong to a single family showing 71–91% amino acid homology. The V $\gamma$ 1 family also shows 42–48% amino acid homology with murine V $\gamma$ 5 (using the

Tonegawa nomenclature). The sixth functional V $\gamma$  gene segment, V $\gamma$ 2 (also termed V $\gamma$ 9), is distinct from all murine V $\gamma$  gene segments. In adults, the V $\gamma$ 2 gene segment is commonly found paired with the V $\delta$ 2 gene segment (also distinct from all known murine V $\gamma$  gene segments). The V $\gamma$ 2 gene segment can also pair with the V $\delta$ 1 gene segment (showing 58% amino acid homology with murine V $\delta$ 6), although V $\delta$ 1 is most commonly paired with a V $\gamma$ 1 family member. The V $\delta$ 3 gene segment is the third most common segment in adults and shows 66% amino acid homology with murine V $\delta$ 5. Although V $\alpha$  gene segments can recombine with the C $\delta$  constant region and pair with V $\gamma$  gene segments, these TCRs constitute only a small fraction of total  $\gamma\delta$  T cells in most individuals.

Unlike mice, humans do not exhibit a predominance of  $\gamma\delta$  T cells at epithelial surfaces, nor are invariant TCRs commonly found at localized anatomic sites. There is evidence, however, for an early wave of  $\gamma\delta$  T cells, from fetal thymus and liver, expressing invariant V $\gamma$ 2 gene segments [48] paired with oligoclonal V $\delta$ 2 gene segments [49–51]. However, by birth, the thymus has switched to V $\delta$ 1 and the V $\gamma$ 1V $\delta$ 1 subset predominates [49, 52]. At birth, the repertoire of  $\gamma\delta$  TCR pairs is quite diverse with significant fractions of neonatal  $\gamma\delta$  T cells expressing V $\gamma$ 1V $\delta$ 2 and V $\gamma$ 2V $\delta$ 1 TCRs that are seldom seen in adults [52].

Between the ages of 1 and 10 years, however, the V $\gamma$ 2V $\delta$ 2 T cell population expands to predominate among adult  $\gamma\delta$  T cells [53]. This expansion is independent of genetic background, since identical twins can have different V gene repertoires and there is no evidence for inheritance of V gene expression in families [53]. Instead, environmental exposure to microbes is likely responsible for this expansion. This expansion is limited to T cells expressing V $\gamma$ 2 paired with V $\delta$ 2 and to a lesser extent, V $\gamma$ 1 paired with V $\delta$ 1; other combinations that are present in neonates become almost non-existent in adults [52].

Because of this extensive activation and expansion, V $\gamma$ 2V $\delta$ 2 T cells become the major subset in adult peripheral blood  $\gamma\delta$  T cells [53] with almost all exhibiting memory phenotypes (data not shown; [53, 54]). The V $\gamma$ 2V $\delta$ 2 TCR (also termed V $\gamma$ 9V $\delta$ 2) specifically recognizes HMBPP [55], an essential metabolite in isoprenoid biosynthesis pathways of many bacteria and all Apicomplexan parasites. Activation of V $\gamma$ 2V $\delta$ 2 T cells in vivo is dependent on the production of this essential metabolite [56]. A related prenyl pyrophosphate, isopentenyl pyrophosphate (IPP), is similarly recognized by V $\gamma$ 2V $\delta$ 2 T cells [57]. However, unlike HMBPP, IPP is present in both microbial and human isoprenoid biosynthesis. IPP is normally sequestered inside host cells, and does not activate V $\gamma$ 2V $\delta$ 2 T cells unless the cells have been treated with bisphosphonates [58] or

alkylamines [59] to block farnesyl diphosphate synthase, thereby increasing IPP levels.

Although never the predominant T cell population,  $V\gamma 1V\delta 1$  T cells (and rarely  $V\gamma 2V\delta 2$  T cells) are enriched in intraepithelial (but not lamina propria) tissues in the gut, constituting up to 37% of total T cells [60, 61]. They are also found in the skin, constituting about 5% of total T cells [61, 62]. A significant fraction of  $V\gamma 1V\delta 1$  and  $V\gamma 2V\delta 1$  T cells (up to 66% of duodenal  $\gamma\delta$  T cells) respond to self and foreign lipids presented by CD1 molecules [63–66]. Antigens identified include pollen-derived phosphatidyl ethanolamine [67] and lipid A [68]. Thus, a significant proportion of  $V\delta 1$  T cells recognize self and foreign lipids presented by CD1. Members of the  $V\gamma 1V\delta 1$  T cell subset also recognize the MHC class I-related molecules, MICA and MICB [69, 70]. Such recognition is TCR-dependent [71, 72] but is independent of antigen processing, presentation, and  $\beta_2M$  [72]. In addition,  $V\delta 1$  and  $V\gamma 2V\delta 2$  T cells also express NKG2D. This C-type lectin also binds MICA, MICB, and UL16-binding proteins, and, together with TCR ligation, provides T cell costimulation [71, 73]. In response to activation,  $V\gamma 1V\delta 1$  and  $V\gamma 2V\delta 2$  T cells similarly produce IFN- $\gamma$  and TNF $\alpha$ , and mediate cytotoxicity.

Finally, human  $\gamma\delta$  T cells expressing  $V\delta 1$ ,  $V\delta 3$ , and  $V\delta 5$  have been found to expand in response to cytomegalovirus (CMV) infection after in utero infection [74] in normal adults [75], and in adults after kidney transplantation [76, 77]. In patients with in utero infection, an invariant  $V\gamma 1.8V\delta 1$  TCR is greatly enriched.  $\gamma\delta$  clones expressing this  $V\gamma 1.8V\delta 1$  TCR secrete IFN- $\gamma$  in response to CMV-infected fibroblasts and kill CMV-infected target cells [74]. Similarly,  $V\delta 1$  and  $V\delta 3$  T cells expand greatly (up to 15–42% of total T cells in some cases) after renal transplantation in patients who develop a CMV infection. These  $\gamma\delta$  T cells may be further expanded in vitro when exposed to lysates of CMV-infected cells [76] and  $\gamma\delta$  clones derived from these cells specifically lyse CMV-infected target cells [78]. Thus, although the CMV-associated ligand(s) and the restricting molecules have not been defined, there is evidence for specific recognition of a CMV-associated compound.

Peripheral differentiation of neonatal  $V\gamma 2V\delta 2$  T cells into  $T\gamma\delta 17$  and  $T\gamma\delta 1/17$  cells requires antigen stimulation and IL-6, IL-1 $\beta$ , and TGF- $\beta$

In our studies on neonatal  $V\gamma 2V\delta 2$  T cells [9], we found that  $V\gamma 2V\delta 2$  T cells behave much like naive  $\alpha\beta$  T cells since they can be polarized into Th17-like lineage cells, which we term  $T\gamma\delta 17$ . Approximately 50% of neonatal  $V\gamma 2V\delta 2$  T cells are phenotypically naive (based on the expression of CD27 and CD28 without expression of

CD45RO). Polarization of neonatal  $V\gamma 2V\delta 2$  T cells to produce IL-17A (termed  $T\gamma\delta 17$  T cells) requires IL-6, IL-1 $\beta$ , and TGF- $\beta$  coupled with TCR stimulation by the antigen, HMBPP. Neutralization of IL-6 or the absence of exogenous TGF- $\beta$  or IL-1 $\beta$ , greatly reduces generation of  $T\gamma\delta 17$  cells. Neutralization of IL-23, in contrast, increases the numbers of  $T\gamma\delta 17$  T cells. Costaining for IFN- $\gamma$  revealed that IL-23, in conjunction with IL-6, IL-1 $\beta$ , and TGF- $\beta$ , induces  $T\gamma\delta 17$  T cells to produce IFN- $\gamma$  in addition to IL-17A (termed  $T\gamma\delta 1/17$ ). A similar phenomenon was observed with Th17 CD4 T cell clones, where IL-23 and/or IL-12 induces IFN- $\gamma$  production [79]. These results suggest that under these conditions, IL-23 may function to drive production of IFN- $\gamma$ .

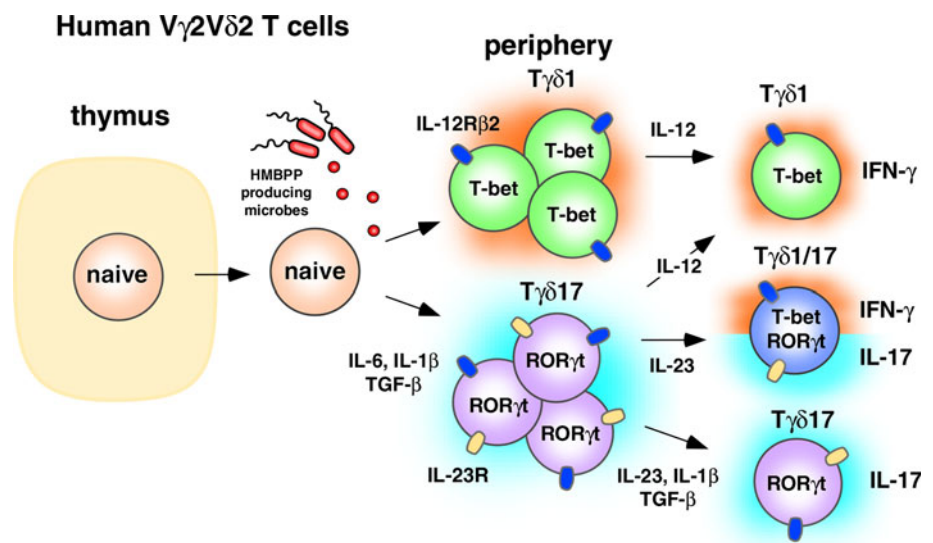
Our results suggest the following model (Fig. 1). In naive  $V\gamma 2V\delta 2$  T cells, IL-6 binding to the IL-6R activates STAT3 which in turn binds and activates the *IL-23R*, *RORC1A*, and *IL-17A/F* genes. IL-1 $\beta$  stabilizes the  $T\gamma\delta 17$  phenotype by inducing IRF4 [37, 38]. TGF- $\beta$  inhibits IL-12-mediated STAT4 signaling, thereby inhibiting differentiation into Th1-like cells (termed  $T\gamma\delta 1$ ) that produce IFN- $\gamma$ . Using intranuclear staining, we verified that neonatal  $V\gamma 2V\delta 2$  T cells producing IL-17A have increased levels of ROR $\gamma$ t, consistent with the hypothesis that it is also a master regulator of  $T\gamma\delta 17$ . Studies examining RUNX1 levels in  $T\gamma\delta 17V\gamma 2V\delta 2$  T cells are planned to determine whether this transcription factor also plays a role.

In the presence of IL-23, the IL-17A-producing  $T\gamma\delta 17$  T cells (which now express the IL-23R) acquire the ability to produce IFN- $\gamma$  via an uncharacterized mechanism [9]. This acquisition of the ability to produce IFN- $\gamma$  by  $T\gamma\delta 17V\gamma 2V\delta 2$  T cells is not unique to  $\gamma\delta$  T cells. Both human Tc17 [80, 81] and human Th17 [82, 83]  $\alpha\beta$  T cells show some level of instability/plasticity, and over time, many of these cells begin to produce IFN- $\gamma$  and lose the ability to produce IL-17A. Similar to Tc17  $\alpha\beta$  T cells, IL-17A production by  $T\gamma\delta 17$  and  $T\gamma\delta 1/17V\gamma 2V\delta 2$  T cells is unstable in vitro and most of the cells eventually lose the ability to make IL-17A and, instead, produce IFN- $\gamma$  (Ness-Schwickerath and Morita, unpublished observations). Future studies with sorted  $T\gamma\delta 17$  populations are needed to confirm the role of IL-23 in the conversion to  $T\gamma\delta 1$ .

IL-23 with IL-1 $\beta$  and TGF- $\beta$  helps maintain adult  $T\gamma\delta 17$  cells but there is significant conversion into  $T\gamma\delta 1/17$  and  $T\gamma\delta 1$ , IFN- $\gamma$ -producing cells

In contrast to neonatal  $V\gamma 2V\delta 2$  T cells, adult  $V\gamma 2V\delta 2$  T cells are almost exclusively memory cells (about 98% of blood  $V\gamma 2V\delta 2$  T cells; Jin et al., unpublished observations). Consistent with this difference, the cytokine requirements for IL-17A production by adult  $V\gamma 2V\delta 2$  T cells is

**Fig. 1** Regulation of IL-17A-producing human  $\gamma\delta$  T cells. Human  $V\gamma 2V\delta 2$  T cells are peripherally programmed to become  $T\gamma\delta 17$  through the effects of IL-6, IL-1 $\beta$ , and TGF- $\beta$  in the presence of HMBPP. These cells can then be maintained as  $T\gamma\delta 17$  through the action of IL-23, IL-1 $\beta$ , and TGF- $\beta$ , or they can acquire IFN- $\gamma$  potential through IL-23 signaling.  $T\gamma\delta 1/17$  T cells commonly lose the ability to produce IL-17A altogether and revert functionally to  $T\gamma\delta 1$ -like cells through IL-12 signaling



significantly different from those for neonatal  $V\gamma 2V\delta 2$  T cells [9]. In adults, optimal expansion of IL-17A-producing  $V\gamma 2V\delta 2$  T cells requires IL-1 $\beta$ , TGF- $\beta$ , and IL-23, but does not require IL-6 (Fig. 1). Although the small population of naive  $V\gamma 2V\delta 2$  T cells in adults hypothetically could be polarized to  $T\gamma\delta 17$  under these conditions, the lack of a requirement for IL-6 suggests that the majority of IL-17A-producing cells are memory  $V\gamma 2V\delta 2$  T cells already committed to the  $T\gamma\delta 17$  and  $T\gamma\delta 1/17$  lineages.

Given the plasticity of the Th17 lineage, it is likely that some fraction of IFN- $\gamma$ -producing  $V\gamma 2V\delta 2$  T cells are actually  $T\gamma\delta 17$  lineage cells that have failed to maintain IL-17A production. These former  $T\gamma\delta 17V\gamma 2V\delta 2$  T cells, however, may maintain permissive histone modifications at the *IL-17A/F*, *RORC*, or *RORA* loci, such that signaling by IL-1 $\beta$ , IL-23, and TGF- $\beta$  could restore IL-17A production. They may also have other differences in chemokine receptor expression, cytotoxicity, or accessory molecule expression that confer specialized functional roles on these cells when compared with true  $T\gamma\delta 1$  cells. Consistent with this possibility, CD4 Th17  $\alpha\beta$  T cells producing IFN- $\gamma$  but not IL-17A, that were stimulated under polarizing conditions for Th17 cells produce the Th17-lineage IL-22 cytokine and CCL20 (MIP-3A/LARC) chemokine [83].

In contrast to neonatal  $V\gamma 2V\delta 2$  T cells, adult  $T\gamma\delta 17$  cells (IFN- $\gamma$ <sup>+</sup>) are less frequent and were observed in only four out of ten donors [9]. Thus, most  $V\gamma 2V\delta 2$  T cells that produce IL-17A also produce IFN- $\gamma$ . However, within the four donors with expandable  $T\gamma\delta 17$  T cells, these cells could be detected ex vivo prior to expansion. The cytokines required for  $T\gamma\delta 17$  expansion in adult blood were similar to those expanding  $T\gamma\delta 1/17$  cells. This suggests that  $T\gamma\delta 17V\gamma 2V\delta 2$  T cells can persist in humans, as do  $\alpha\beta$  T cells. Because captive, specific pathogen-free rhesus macaques have much higher frequencies of  $T\gamma\delta 17$  cells

than human donors, it is likely that the type and number of infections may determine whether these cells persist in vivo. It is likely that frequent Th1 immune responses (involving ample IL-12) cause many human  $T\gamma\delta 17V\gamma 2V\delta 2$  T cells to transition to  $T\gamma\delta 1/17$  cells, and then ultimately to  $T\gamma\delta 1$ -like cells.

#### Regulation of IL-22 production by human $V\gamma 2V\delta 2$ T cells

Generation of neonatal IL-22-producing ( $T\gamma\delta 22$ )  $V\gamma 2V\delta 2$  T cells require conditions very similar to those required to generate IL-17A-producing  $V\gamma 2V\delta 2$  T cells, namely, IL-1 $\beta$ , IL-6, and TGF- $\beta$  [9]. Adult  $T\gamma\delta 22V\gamma 2V\delta 2$  T cells, much like adult  $T\gamma\delta 1/17$ , require IL-23, IL-1 $\beta$ , and TGF- $\beta$ , and are independent of IL-6 [9]. However, under these conditions, fewer  $V\gamma 2V\delta 2$  T cells converted to the  $T\gamma\delta 22$  lineage than to the  $T\gamma\delta 17$  (or  $T\gamma\delta 1/17$ ) lineage. This may reflect the requirement for TNF- $\alpha$  (not included in our study) and inhibition by TGF- $\beta$  (since the 1 ng/ml concentration we used inhibited Th22 priming in the study by Duhon et al.) [84]. Additionally, the lack of ligands for the aryl hydrocarbon receptor (AHR; discussed below for IL-22-producing murine  $\gamma\delta$  T cells) might have inhibited Th22 development since we did not include AHR ligands, nor did we use Iscove's DMEM which has high levels of aromatic amino acids and favors Th17/Th22 differentiation [85]. Unlike murine CD4  $\alpha\beta$  T cells, very few if any  $V\gamma 2V\delta 2$  T cells stimulated ex vivo produce both IL-17A and IL-22 cytokines [9]. Similarly, very few in vitro-polarized IL-17A-producing  $V\gamma 2V\delta 2$  T cells coproduce IL-22. This suggests that the  $T\gamma\delta 17$  (and  $T\gamma\delta 1/17$ ) lineage is distinct from the  $T\gamma\delta 22$  lineage. As with  $T\gamma\delta 17$  cells, IL-23 reduces the number of neonatal  $T\gamma\delta 22V\gamma 2V\delta 2$  T cells. Again we believe this is because under some

conditions or at high concentrations, IL-23 can drive  $T\gamma\delta 22$  cells to transition into  $T\gamma\delta 1$  cells (perhaps by stimulating IL-12 production or by direct action). The  $T\gamma\delta 22$  population, like the  $T\gamma\delta 1/17$  population, consists of mixed populations of  $IFN-\gamma^+$  and  $IFN-\gamma^-$  cells. Future studies examining polarization to  $T\gamma\delta 22$  in the presence of AHR ligands or additional cytokines such as IL-6 and TNF- $\alpha$  [84] are in progress.

#### Role of IL-17A-producing $V\gamma 2V\delta 2$ T cells in human microbial immunity

Relatively few studies have examined the role of human  $\gamma\delta$  T cells producing IL-17A and IL-22 in human immunity and autoimmunity. In our samples from ten healthy adult donors, an average of 1.1% of  $V\gamma 2V\delta 2$  T cells produced IL-17A. A similar, non-overlapping proportion of  $V\gamma 2V\delta 2$  T cells produced IL-22 (1.2%). Since  $V\gamma 2V\delta 2$  T cells constitute  $5.25 \pm 2.1\%$  of total  $CD3^+$  T cells, IL-17A- and IL-22-producing  $V\gamma 2V\delta 2$  T cells occur at frequencies of 1 in 2,762 and 1 in 1,864 T cells, respectively. Moreover, several donors showed increased frequencies of IL-17 $^+$   $V\gamma 2V\delta 2$  T cells (up to 1 in 906 T cells). Furthermore, in specific pathogen-free rhesus macaques, there was a five-fold increased baseline frequency of IL-17-producing  $V\delta 2$  T cells ( $5.6 \pm 1.3\%$ , ranging from 1.1 to 13.4%). This suggests that continued bacterial infections in humans may drive  $T\gamma\delta 17$  cells to lose the ability to produce IL-17A.

Although the frequencies appear low, adult  $V\gamma 2V\delta 2$  T cells recognize most bacterial and Apicomplexan protozoan pathogens by virtue of their recognition of essential prenyl pyrophosphates, such as HMBPP, and a phosphoantigen produced by Gram-positive cocci (data not shown). Numerous bacterial and protozoan infections in humans (detailed in Table 1) are associated with major expansions of  $V\gamma 2V\delta 2$  T cells such that in some individuals,  $V\gamma 2V\delta 2$  T cells can constitute up to 50% of circulating T cells (one in two T cells) with increases to 10–25% commonly found (Table 1).

Essentially all adult  $V\gamma 2V\delta 2$  T cells recognize prenyl pyrophosphate antigens due to the extensive use of germline encoded regions of the  $V\gamma 2V\delta 2$  TCR for prenyl pyrophosphate recognition [86] and the selection for  $J\gamma 1.2$  and a hydrophobic  $V\delta 2$  CDR3 residue that occurs during infancy [52, 87–90]. For example, 91 out of 94 adult  $V\gamma 2V\delta 2$  T cell clones (97%) were antigen-responsive [88, 91, 92]. Thus, the frequency of  $V\gamma 2V\delta 2$  T cells is actually the antigen-specific frequency and, therefore, is very high at 1 in 19 T cells [9]. In contrast, the frequency of  $\alpha\beta$  T cells specific for a particular peptide/MHC complex among naive cells is usually very low: 1:158,000–1:1,875,000 for CD4 [93] and 1:33,000–1:164,000 (four of six were >1:142,000) for CD8 [94]. Since essentially all IL-17A-

and IL-22-producing  $V\gamma 2V\delta 2$  T cells are antigen-specific, during primary infections,  $V\gamma 2V\delta 2$  T cells and other unconventional T cells are likely to be important sources of early IL-17A and IL-22 until naive CD4 and CD8  $\alpha\beta$  T cells can be expanded and differentiated into memory Th17/Tc17 and Th22/Tc22 cells.

Thus far, IL-17A production by  $\gamma\delta$  T cells has only been described in two human diseases, active tuberculosis and HIV infection. In response to active tuberculosis infection, Peng et al. [95] demonstrated increases in the proportion of peripheral blood  $\gamma\delta$  cells producing IL-17A, and decreases in the proportion producing  $IFN-\gamma$ . Similarly, exposure of peripheral blood mononuclear cells from either tuberculosis patients or healthy controls to *M. tuberculosis* antigens for 7 days dramatically expanded IL-17A $^+$   $\gamma\delta$  T cells [95]. These results suggest that *M. tuberculosis* infection in vivo may expand blood IL-17A $^+$   $\gamma\delta$  T cells. Although the role of  $\gamma\delta$  production of IL-17A in granuloma formation cannot be easily addressed in humans, murine studies would suggest an important role. Additional studies in this patient population are needed to define the  $\gamma\delta$  subsets producing IL-17A and the mechanism by which the  $\gamma\delta$  T cells become activated. Based on our results, we would hypothesize that *M. tuberculosis* infection stimulates IL-23 and IL-1 $\beta$  cytokine production by lung APCs, which together with TLR ligands and HMBPP, activate and expand IL-17A $^+$   $V\gamma 2V\delta 2$  T cells.

To model human tuberculosis infections, Yao et al. [96] infected cynomolgus and rhesus macaques with *M. tuberculosis* and monitored cytokine production by T cells at various time points. After 4 weeks, statistically significant increases were observed in the percent of circulating T cells producing IL-22, but not IL-17A. However, in contrast to the work by Peng et al., they did not detect differences among the  $V\gamma 2V\delta 2$  T cells. There are several potential explanations for these differences. First and most significantly, Yao et al. stimulated  $V\gamma 2V\delta 2$  T cells only with HMBPP ex vivo, whereas Peng et al. restimulated  $V\gamma 2V\delta 2$  T cells with PMA and ionomycin (which allows maximal determination of IL-17A-producing cells). Second, Peng et al. study, examined cytokine production during reactivation of tuberculosis in chronically infected patients, whereas Yao et al. examined cytokine production at late time points in primary tuberculosis. And lastly, Yao et al. injected *M. tuberculosis* directly into the lung parenchyma via bronchoscopy, whereas Peng et al. examined patients who had acquired TB through a natural infection.

In a second human study, Fenoglio et al. [97] examined  $\gamma\delta$  T cells from healthy and HIV $^+$  individuals and found increased frequencies of circulating  $\gamma\delta$  T cells (mostly  $V\delta 1$ ) and a higher propensity for IL-17 and  $IFN-\gamma$  production by both  $V\delta 1$  and  $V\gamma 2V\delta 2$  T cells. More than

**Table 1** Expansion of human  $\gamma\delta/V\gamma 2V\delta 2$  T cells in response to infection

Infection	$\gamma\delta$ T cells, mean (max) % of T cells		Reference
	Normal subjects	Patients	
<b>Bacterial</b>			
Tuberculosis	6	14 (35)	[175]
	2	6 (17)	[176]
TB contacts	5	10 (18)	[177]
TB meningitis	3	4 (80% $V\gamma 2V\delta 2$ )	[178]
Leprosy reversal reaction	5	29 <sup>a</sup>	[179]
Tularemia	3	33	[180]
	7	31 (48)	[181]
	5	25 (50)	[182]
Salmonellosis	5	18 (48)	[183]
Legionellosis	5	15 (42)	[184]
Brucellosis	4	29 (48)	[185]
Q-fever ( <i>Coxiella burnetii</i> )	4	16 (30)	[186]
Ehrlichiosis	5	57 (97)	[187]
Meningitis ( <i>H. influenzae</i> )	7	27 (37)	[188]
Meningitis ( <i>N. meningitidis</i> )	7	25 (42)	[188]
Meningitis ( <i>S. pneumoniae</i> )	7	35 (46)	[188]
Listeriosis	2	12 (33)	[189]
<b>Protozoal parasites</b>			
Acute malaria (non-endemic)	4	16 (26)	[190]
	5	16 (27)	[191]
	3	18 (46)	[192]
Malarial paroxysm	4	11 (27)	[193]
Toxoplasmosis	4	9 (15)	[194]
Leishmaniasis, visceral	8	44	[195]
Leishmaniasis	3	13 (18)	[196]
Leishmaniasis, localized	4	20 <sup>a</sup>	[179]

<sup>a</sup> %  $\gamma\delta$  T cells among CD3<sup>+</sup> T cells in skin lesions.

one-third of  $V\delta 1$  and approximately one-half of  $V\gamma 2V\delta 2$  T cells isolated ex vivo contained intracellular IL-17A [97]. However, the ability to produce IL-17A was rapidly lost in vitro unless *Candida albicans* extract or *M. tuberculosis* purified protein derivative was included in the cultures for  $V\delta 1$  or  $V\gamma 2V\delta 2$  T cells, respectively. In the absence of the bacterial products, the ability to produce IL-17 by either subset was lost. This suggests that the bacterial products stimulate the correct cytokines to retain the ability to produce IL-17A and that in their absence, IL-17-producing  $\gamma\delta$  T cells convert to  $T\gamma\delta 1$  T cells. Consistent with this possibility, IL-17A-producing  $V\delta 1$  and  $V\gamma 2V\delta 2$  T cells also produced IFN- $\gamma$ , were CD161<sup>+</sup>, and expressed ROR $\gamma$ t and T-bet [97]. These results are similar to our findings. Unfortunately, their analysis did not extend to IL-22 production, nor did it address the specific factors present within the bacterial products that were required to retain IL-17A production. However, human memory CD4  $\alpha\beta$  T

cells specific for *C. albicans* include many Th17 cells [82] and IL-17A is essential for the control of *C. albicans* infections in mice [98]. Stimulation by *C. albicans* induces strong IL-17 responses due to the production of  $\beta$ -glucans and mannans that engage dectin-1 and mannose receptors, respectively, on APC [99]. This stimulates production of prostaglandin E2, which in turn, stimulates IL-6 and IL-23 production, thus favoring development of Th17 cells [99–101]. Similarly, *M. tuberculosis* infection stimulates both murine Th17  $\alpha\beta$  T cells and  $T\gamma\delta 1$   $\gamma\delta$  T cells [5] through production of ligands for TLR4 and dectin-1 [102]. Thus, rather than being specific for antigens in *C. albicans* extracts or purified protein derivative, these microbial products likely stimulate cytokine production to favor the maintenance and/or differentiation of  $T\gamma\delta 17$  cells.

There is evidence to suggest that IL-17 production by  $V\gamma 2V\delta 2$  T cells in neonates and infants will be highly relevant to their resistance to infections. Newborns have



intrinsic defects in both APC and conventional T cells resulting in poor adaptive immune responses to infection [103, 104]. Defective IL-12 production by neonatal APC is in part responsible for poor Th1  $\alpha\beta$  immunity. Instead of producing the Th1 cytokine, IL-12, neonatal APC produce IL-23, IL-1 $\beta$ , and IL-6 [105–108]. Because  $\gamma\delta$  T cells are the first T cells to develop, do not require professional antigen processing or presentation, and respond to shared microbial isoprenoid antigens, they are uniquely poised to mount protective immune responses in neonates [109]. In fact, nearly every V $\gamma$ 2V $\delta$ 2 T cell will become activated prior to the age of 1 year by self or environmental antigens [53, 54]. From our studies on neonatal V $\gamma$ 2V $\delta$ 2 T cells, we know that the IL-1 $\beta$ , IL-6, and IL-23 cytokines promote the differentiation of T $\gamma\delta$ 1/17 T cells in vitro, and we propose that the same process occurs in vivo.

We speculate that neonatal V $\gamma$ 2V $\delta$ 2 T cells activated in response to a broad range of HMBPP-producing microbes, are polarized by the high levels of IL-23, IL-1 $\beta$ , and IL-6 into T $\gamma\delta$ 17 or T $\gamma\delta$ 1/17 T cells which, in the absence of strong Th1 immunity, function to immediately upregulate protective innate immune mechanisms. Because of repeated infections, most of these T $\gamma\delta$ 17 and T $\gamma\delta$ 1/17 T cells lose their ability to produce IL-17A and only produce IFN- $\gamma$  in adults. However, they are likely to retain some of the functional characteristics of T $\gamma\delta$ 17 cells. A method to determine the proportion of adult V $\gamma$ 2V $\delta$ 2 T cells derived from T $\gamma\delta$ 17 awaits the identification of markers for T $\gamma\delta$ 17 cells that have lost IL-17A production, but the proportion could be substantial.

#### Role of IL-17A-producing V $\gamma$ 2V $\delta$ 2 T cells in human autoimmunity

The role of IL-17-producing V $\gamma$ 2V $\delta$ 2 T cells in human autoimmunity is also poorly studied. Human  $\gamma\delta$  T cells coproducing IL-17A and IFN- $\gamma$  have been found in the synovial fluid and synovium of patients with rheumatoid arthritis [110]. Pollinger et al. found that all of the patients with rheumatoid arthritis examined had IL-17- and IFN- $\gamma$ -coproducing  $\gamma\delta$  T cells in the inflamed synovium. Moreover, in synovial fluid, the IL-17<sup>+</sup>, IFN- $\gamma$ <sup>+</sup>  $\gamma\delta$  T cells occur at a frequency equal to that of the IL-17<sup>+</sup>, IFN- $\gamma$ <sup>+</sup> CD4 T cells. The authors attempted to translate the results seen in their murine collagen-induced arthritis (CIA) model of human rheumatoid arthritis, and concluded that IL-17-producing  $\gamma\delta$  T cells do not drive bone destruction [110]. However, only three patients were examined in this study, and all were undergoing cortisone treatment. Thus, more patients will need to be studied before firm conclusions can be drawn. Moreover, human

and murine  $\gamma\delta$  T cells have quite different antigen specificities, anatomic localization, and cytokine potentials, and, therefore, are unlikely to function similarly in most diseases. Finally, these findings do not preclude a contribution by  $\gamma\delta$  T cells to joint inflammation. Further studies in rheumatoid arthritis and other autoimmune diseases are needed to assess the pathogenic potential of IL-17-producing  $\gamma\delta$  T cells, especially during the initiation of autoimmunity, where a small population of T cells can direct the subsequent development of specific T lineages.

#### IL-17A-producing murine $\gamma\delta$ T cells

Murine  $\gamma\delta$  T cells develop in thymic waves with poorly defined TCR specificity

Murine  $\gamma\delta$  T cells begin to develop prior to  $\alpha\beta$  T cells in thymic waves characterized by specific V gene combinations. The first waves produce invariant V $\gamma$ 5V $\delta$ 1 and V $\gamma$ 6V $\delta$ 1 TCRs that lack significant junctional diversity and exhibit tropism to the skin (dendritic epidermal T cells, DETC) and epithelial tissues, respectively [111] (in the nomenclature of Heilig and Tonegawa [112]). Postnatally, the thymus then switches to the production of highly diversified V gene segments (such as V $\gamma$ 4, V $\gamma$ 1, and V $\delta$ 1) on  $\gamma\delta$  T cells that localize to secondary lymphoid organs [113]. A subset of these  $\gamma\delta$  T cells, expressing a variety of V $\gamma$  and V $\delta$  regions, recognize the nonclassical MHC class I molecules, T10 and T22, through their expression of a CDR3 $\delta$  motif of nine amino acids primarily encoded by D $\delta$ 2 and containing six invariant residues [114]. T22 and T10 molecules are upregulated on activated immune cells, suggesting a role for these T10-/T22-specific  $\gamma\delta$  T cells during microbial responses [115]. Besides the H-2T molecules, a subpopulation of murine V $\gamma$ 4 T cells are restricted to lipid-presenting CD1d molecule in coxsackievirus-induced myocarditis [116]. The relationship between these V $\gamma$ 4 T cells and V $\gamma$ 4V $\delta$ 4 T cells exhibiting limited diversity that are found in CIA [117] is unknown. Additionally, a ligand for the invariant skin V $\gamma$ 5V $\delta$ 1 TCR is expressed by stressed keratinocytes, although the exact identity of the molecule is unknown. There have also been examples of murine  $\gamma\delta$  T cells specific for the herpes protein, gI [118], and H-2 MHC class II proteins (although this recognition does not involve peptides) [119]. Beyond these examples, most of the natural murine  $\gamma\delta$  antigens/ligands remain unknown. To date, IL-17A production has been documented for V $\gamma$ 1 [120], V $\gamma$ 4 [117, 120], V $\gamma$ 6V $\delta$ 1 [8], and V $\gamma$ 5V $\delta$ 1 DETC [121]  $\gamma\delta$  subsets.

Regulation of IL-17A-producing murine  $\gamma\delta$  T cells: thymic imprinting of distinct  $\gamma\delta$  T cell subsets for IL-17A production

Unlike  $\alpha\beta$  T cells, murine  $\gamma\delta$  T cells can be developmentally imprinted to produce IFN- $\gamma$  or IL-17A. Utilizing a T22 tetramer to identify H-2T-specific cells, Jensen et al. [122] found that tetramer-positive antigen-inexperienced  $\gamma\delta$  T cells that lack CD122 (IL-2R $\beta$ ) produce IL-17A, whereas antigen-experienced  $\gamma\delta$  T cells expressing CD122 produce IFN- $\gamma$ . Similarly, IL-17A-producing peritoneal V $\gamma$ 6V $\delta$ 1 T cells lack CD122 but express CD25 (IL-2R $\alpha$ ) and originate from IL-17A-producing thymic precursors [123]. The appearance of IL-17A-producing thymic  $\gamma\delta$  T cells peaks at embryonic day 19, arguing against a role for exogenous antigen(s).

CD27 plays a critical role in determining whether  $\gamma\delta$  T cells produce IFN- $\gamma$  or IL-17A (Fig. 2). CD27 expressed on thymic  $\gamma\delta$  T cells engages its ligand, CD70 (presumably expressed on thymic epithelial cells), while the  $\gamma\delta$  TCR likely binds to endogenous antigens resulting in trans-conditioning of thymic  $\gamma\delta$  T cells to produce IFN- $\gamma$  [120]. CD27 ligation induces expression of the lymphotoxin- $\beta$  receptor and other trans-conditioning genes, including *Crem*, *N24a2*, *Rgs2*, and *Rgs1*, in thymic V $\gamma$ 4 and V $\gamma$ 1  $\gamma\delta$  T cells [120]. Thymic  $\gamma\delta$  T cells have high baseline expression of *Rorc* (which encodes ROR- $\gamma$ t) and *Runx1*, but require CD27 signaling to upregulate *Tbx21* (which encodes T-bet) expression and to derepress the IFN- $\gamma$  locus, which then enables them to produce IFN- $\gamma$  [120] like CD4  $\alpha\beta$  T cells [124]. In agreement with the other studies, the majority of CD27-negative, IL-17A-producing thymic  $\gamma\delta$  T cells did not express CD122 [122, 123].

Further characterization of adult thymic  $\gamma\delta$  T cells has revealed two distinct subsets, one being CD27<sup>-</sup>, CD122<sup>-</sup>,

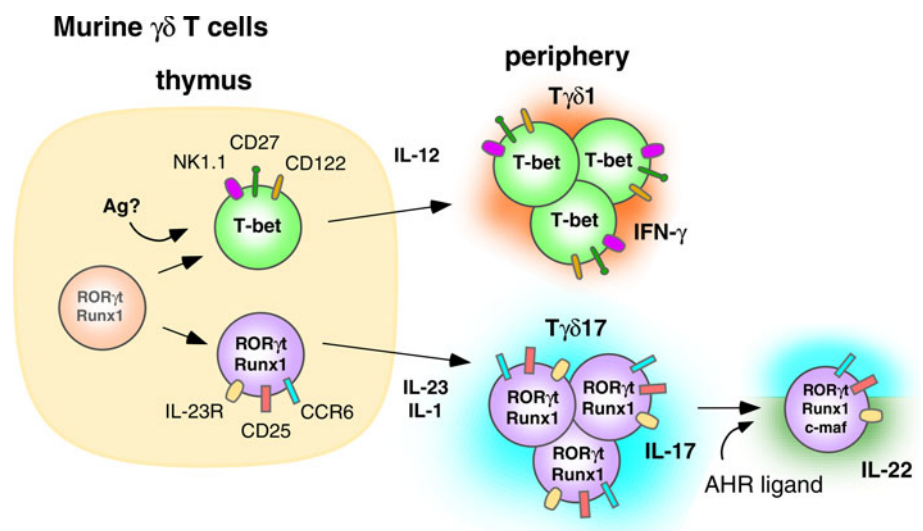
CCR6<sup>+</sup>, and NK1.1<sup>-</sup> producing IL-17A, and the other being CD27<sup>+</sup>, CD122<sup>+</sup>, CCR6<sup>-</sup>, and NK1.1<sup>+</sup> producing IFN- $\gamma$ . Unlike human CD4  $\alpha\beta$  and V $\gamma$ 2V $\delta$ 2 T cells producing IL-17A, the segregation between IL-17A and IFN- $\gamma$  production in the thymus appears stable and irreversible. No IL-17A<sup>+</sup>, IFN- $\gamma$ <sup>+</sup> dual-positive  $\gamma\delta$  cells were observed [120]. Moreover, culturing IL-17A-producing CCR6<sup>+</sup>  $\gamma\delta$  T cells with polarizing cytokines for the Th1 lineage (IL-12 and IL-18), or culturing IFN- $\gamma$ -producing, NK1.1<sup>+</sup>  $\gamma\delta$  cells with polarizing cytokines for the Th17 lineage (IL-23), fails to alter the cytokines produced [125]. Thus, unlike human  $\alpha\beta$  and  $\gamma\delta$  T cells, there appears to be little plasticity in thymic derived murine  $\gamma\delta$  T cells producing IL-17A.

In addition to CD27, SCART2 scavenger receptors (related to CD5 and CD6 in humans and WC1.1 in cattle and sheep) are predominantly expressed on murine  $\gamma\delta$  T cells and also identify  $\gamma\delta$  T cells producing IL-17A [126]. SCART2<sup>hi</sup>  $\gamma\delta$  T cells were found in peripheral lymph nodes and nearly all were V $\gamma$ 4<sup>+</sup>, constituting about 25% of total V $\gamma$ 4<sup>+</sup> cells [126]. SCART2<sup>hi</sup>  $\gamma\delta$  T cells were also found in the dermis but did not express V $\gamma$ 5V $\delta$ 1 DETC TCRs.

As discussed above for human  $\alpha\beta$  and V $\gamma$ 2V $\delta$ 2 T cells, polarizing cytokines play a vital role in the differentiation of T cells into Th17/IL-17A-producing cells. In contrast to  $\alpha\beta$  and neonatal V $\gamma$ 2V $\delta$ 2 T cells, neutralization of IL-6 has little effect on innate production of IL-17A by murine fetal thymic  $\gamma\delta$  T cells [7, 123, 127]. Furthermore, IFN- $\gamma$  does not interfere with innate IL-17A production by thymic  $\gamma\delta$  T cells [120]. IL-6 is required at some point for optimal IL-17A production since about 75% fewer peripheral IL-17A<sup>+</sup>  $\gamma\delta$  T cells were noted in IL-6<sup>-/-</sup> mice [128].

Conflicting reports exist concerning the requirement for TGF- $\beta$  in the innate programming of IL-17A-producing thymic  $\gamma\delta$  T cells. In fetal thymic organ cultures, neutralization of TGF- $\beta$  had no effect on the development of  $\gamma\delta$  T

**Fig. 2** Murine  $\gamma\delta$  T cells are thymically programmed to produce IL-17A in the absence of exogenous antigen. IL-23 and IL-1 are required by peripheral T $\gamma\delta$ 17 T cells to maintain IL-17A production. Ligation of the AHR by these cells leads to the coproduction of IL-17A and IL-22. Murine  $\gamma\delta$  cells appear to show firm commitment to the T $\gamma\delta$ 17 lineage and most do not acquire the ability to produce IFN- $\gamma$



cells producing IL-17A [123]. In contrast, in  $\gamma\delta$  T cells from very young TGF- $\beta$ -deficient mice prior to the development of lymphoproliferative disease, TGF- $\beta$  is required for the innate programming of IL-17A production by thymic and peripheral  $\gamma\delta$  T cells [129]. One explanation for the different conclusions is that TGF- $\beta$  exerts its effects indirectly by inhibiting STAT4 and GATA-3 in  $\gamma\delta$  T cells but has no effects on the expression of ROR- $\gamma$ t. This has been observed for  $\alpha\beta$  Th17 T cell differentiation where if the ability of  $\alpha\beta$  T cells to differentiate into Th1 and Th2 lineages is blocked, then TGF- $\beta$  is not required for their differentiation into Th17 cells [43].

In contrast to the differing results on thymic innate programming, IL-23 clearly appears to have significant effects on IL-17A production by peripheral  $\gamma\delta$  T cells [7, 120, 130]. IL-1 has also been shown to play a critical role in IL-17A production by mature peripheral  $\gamma\delta$  T cells because IL-1R<sup>-/-</sup> mice show reduced production of IL-17A [6, 130]. Within mature splenic  $\gamma\delta$  T cells, IL-23 functions with IL-1 $\beta$  to further upregulate the constitutive expression of *Rorc* (ROR $\gamma$ t) and *Il23r* [6]. This production of IL-17A in response to IL-23 is dependent on Tyk-2 [131], a member of the JAK family whose absence decreases phosphorylation of STAT3 [132]. Signals following IL-23R binding to IL-23 activate STAT3, which then binds and activates the *Il-17a* and *Il-17f* promoters [36]. IL-1R signaling appears to be required for maintenance of IL-23R expression in differentiated Th17 cells, and we assume that such signaling would be true of innately programmed  $\gamma\delta$  T cells [133]. Together, these results suggest a mechanism, distinct from that of  $\alpha\beta$  T cells, where  $\gamma\delta$  T cells acquire IL-17A-producing capacity and differentiate into “memory”-type T cells in the thymus, perhaps by responding to endogenous TCR ligands. Although these IL-17-producing  $\gamma\delta$  T cells respond to the normal cytokines that upregulate Th17  $\alpha\beta$  T cell function (such as IL-23 and IL-1 $\beta$ ), they are firmly committed to producing only IL-17A and do not exhibit the plasticity of human  $\alpha\beta$  and  $\gamma\delta$  T cells which can acquire the ability to produce IFN- $\gamma$  and lose the ability to make IL-17A.

#### Regulation of IL-22-producing murine $\gamma\delta$ T cells: requirement of the AHR

The development of murine  $\gamma\delta$  T cells producing IL-22 is less well understood. Thymic populations producing IL-22 have yet to be described. Therefore the bulk of knowledge comes from studies on peripheral  $\gamma\delta$  T cells and the development of IL-22-producing CD4  $\alpha\beta$  T cells. The differentiation of  $\alpha\beta$  T cells into IL-22-producing cells (Th22 cells) requires engagement of the AHR (also known as the dioxin receptor). AHR is a ligand-dependent transcription factor that, upon engaging one of its ligands,

binds the promoter region within dioxin-response genes and activates their transcription [134]. Ligands for AHR include numerous polycyclic aromatic hydrocarbons, both synthetic and naturally occurring. It is not known if there is a single, primary endogenous physiological ligand. Known ligands include 2,3,7,8-tetrachlorodibenzo-*p*-dioxin and the photoproduct of tryptophan, 6-formylindolo[3,2-*b*]carbazole (FICZ). AHR is upregulated in developing Th17 T cells [135] in response to the Th17 polarizing cytokines, TGF- $\beta$  and IL-6, and in Tr1 regulatory cells in response to IL-27 [136]. AHR enhances naive T cell differentiation into Th17 cells by decreasing STAT1 activation, thereby enabling Th17 development [135]. The presence of AHR is required for production of IL-22 but not IL-17A or IL-17AF [85, 137].

Consistent with the reported effects of AHR activation on  $\alpha\beta$  T cells, injection the AHR ligand, FICZ, with heat-killed mycobacteria induces expansion of peritoneal  $\gamma\delta$  cells that produce both IL-17A and IL-22. IL-22 production is highly dependent upon the presence of the AHR because  $\gamma\delta$  T cells from AHR<sup>-/-</sup> mice do not produce IL-22 but do produce IL-17A [7]. V $\gamma$ 6V $\delta$ 1 T cells in the lung are another peripheral IL-22-producing population that produce IL-22 in response to repeated stimulation by *Bacillus subtilis* in a lung fibrosis model [138]. This production of IL-22 by V $\gamma$ 6V $\delta$ 1 T cells has been found to be critical to avoiding lung fibrosis in this model. Although some CD4  $\alpha\beta$  T cells are reported to produce both IL-17A and IL-22, there were two distinct subsets of V $\gamma$ 6V $\delta$ 1 T cells in the lung setting, those producing IL-22 and those producing IL-17A [138]. Very few V $\gamma$ 6V $\delta$ 1 cells produced both cytokines, which is identical to what we observed with V $\gamma$ 2V $\delta$ 2 T cells [9]. AHR<sup>d/d</sup> mice, that express an AHR with lower affinity, produce reduced amounts of IL-22 compared to wild-type mice. However, the levels of IL-17A and IL-17F are similar [138]. These results point to similarities between IL-22 production by Th17  $\alpha\beta$  T cells and innately programmed  $\gamma\delta$  T cells since both require AHR.

#### Functions of IL-17A-/IL-22-producing murine $\gamma\delta$ T cells in microbial immunity

IL-17A-producing murine  $\gamma\delta$  T cells are protective during many bacterial and fungal infections. An early indication of the importance of IL-17A production by  $\gamma\delta$  T cells is the ability of  $\gamma\delta$  and  $\alpha\beta$  NKT cells to control neutrophil levels in adhesion molecule-deficient mice [139]. The rapid production of IL-17A is an important property of  $\gamma\delta$  and unconventional  $\alpha\beta$  T cells and helps protect against microbial infections. This ability is critically dependent on their expression of the IL-23R [128].

$\gamma\delta$  T cells can rapidly produce IL-17A, independent of foreign antigens, upon TLR and/or cytokine stimulation.

This early production of IL-17A occurs in *Escherichia coli* infections where peritoneal IL-17A can be found as early as 1 h after infection and peaks at 6 h with neutrophil levels peaking at 24 h [8]. The IL-17A is produced by V $\delta$ 1  $\gamma\delta$  T cell since production is significantly impaired in V $\delta$ 1-deficient mice [8]. Furthermore, IL-23 is sufficient to induce IL-17A production from  $\gamma\delta$  T cells purified from the infected peritoneum [8]. Similarly, IL-17A production by peritoneal  $\gamma\delta$  T cells rapidly reaches a peak 12 h after injection of heat-killed mycobacteria [7] or after sepsis due to cecal puncture [140]. IL-17A production requires TLR2 signaling and is amplified by IL-23 signaling, although it is not clear whether the  $\gamma\delta$  T cells were directly responding to the TLR stimulus [7].

In another study, lipopolysaccharide TLR4 and PAM<sub>3</sub>CysSerLys<sub>4</sub> TLR2 ligands were directly injected into the peritoneal cavity where they stimulated the expansion of IL-17A<sup>+</sup>  $\gamma\delta$  T cells [141]. Production of IL-23 and IL-1 $\beta$  by activated myeloid cells in the peritoneum stimulates CD27<sup>-</sup>  $\gamma\delta$  T cells to expand and produce IL-17A [141]. No direct response to TLR ligands is observed with purified  $\gamma\delta$  T cells in vitro. However, they do expand and produce IL-17A when cultured with exogenous IL-23 and IL-1 $\beta$  [141]. In contrast, infection with murine herpesvirus 4 or malaria parasites stimulates the expansion of CD27<sup>+</sup> IL-17A<sup>-</sup>  $\gamma\delta$  T cells that produce IFN- $\gamma$  [141].

Taken together, these results indicate that CD27 expression divides peritoneal  $\gamma\delta$  T cells into a CD27<sup>+</sup> IFN- $\gamma$ -producing subset that requires CD27 signaling and a CD27<sup>-</sup> IL-17A-producing subset that responds to IL-23 and IL-1 $\beta$  cytokines released by myeloid cells in response to innate immune signals [141]. All of these findings, however, do not preclude the requirement for recognition by the  $\gamma\delta$  TCR of self ligands since there is evidence that such self ligands are constitutively expressed on murine cells when detected by soluble multimeric  $\gamma\delta$  TCR [142, 143].

In addition to increasing neutrophil numbers and recruiting them to the sites of infection, IL-17A-producing  $\gamma\delta$  T cells can also promote the formation of abscesses and granulomas to help mediate containment of microbial infections. In cutaneous *Staphylococcus aureus* infections, IL-17A-producing skin V $\gamma$ 5V $\delta$ 1 T cells play a critical role in immunity. Their production of IL-17A helps to recruit neutrophils into skin abscesses and limits the size of abscesses and the number of *S. aureus* bacteria that they contain [121].

In *Listeria monocytogenes* infections, IL-17A-producing V $\gamma$ 6 paired with V $\delta$ 1 [144] and V $\gamma$ 4  $\gamma\delta$  T cells contribute to bacterial clearance by containing the bacteria within granulomas in the liver [145] and recruiting neutrophils and other myeloid cells. Without  $\gamma\delta$  T cells or IL-17A, bacterial numbers are more than 100-fold higher.

Moreover, *L. monocytogenes* infections in  $\gamma\delta$  T cell-deficient mice are associated with large inflammatory lesions in the liver with necrotic hepatocytes [146, 147] that are indistinguishable from those seen in IL-17A-deficient mice [145]. IL-23 and IL-17R signaling are required to control *L. monocytogenes* systemic infections and  $\gamma\delta$  T cells are the principal source of IL-17A early in infection [148] although CD4<sup>-</sup>8<sup>-</sup>  $\alpha\beta$  T cells also produce IL-17A in the peritoneum [128].

The formation of lung granulomas during mycobacterial infections is critical to containing these infections. Here again, IL-17A production by murine lung  $\gamma\delta$  T cells, expressing V $\gamma$ 4 and V $\gamma$ 6 [149] paired with V $\delta$ 1 TCRs [144], are critical for the recruitment of granulocytes and monocytes into pulmonary granulomas in *M. bovis* BCG-infected mice [149, 150]. In fact, during *M. tuberculosis* infections in mice, IL-17A production is primarily from  $\gamma\delta$  and other unconventional T cells, rather than from CD4 and CD8  $\alpha\beta$  T cells [5]. Both IL-23 and IL-17A are essential for protective vaccine responses to subsequent *M. tuberculosis* challenge [151], and mice unable to produce IL-17A have impaired maturation of BCG-induced granulomas with low numbers of  $\gamma\delta$  T cells [149]. An identical phenotype has been noted in mice lacking V $\gamma$ 4 and V $\gamma$ 6 T cells [149]. IL-17A is critical in *M. tuberculosis* infections since mice lacking IL-17A have 30-fold higher bacterial counts associated with poor granuloma formation [149].

Additional mechanisms for protection by IL-17A- or IL-22-producing  $\gamma\delta$  T cells include the induction of antimicrobial peptides and the remodeling of the extracellular matrix. Individually, IL-17A and IL-22 can upregulate expression of the antimicrobial peptides,  $\beta$ -defensin-2, S100A7, S100A8, and S100A9 by keratinocytes [32]. The combination of IL-17A and IL-22 is synergistic for induction of antimicrobials [152]. Such antimicrobials are especially important to mucosal immunity since they are broadly active and rapidly microbicidal. IL-17A also induces tissue remodeling proteins such as MMP-1, -3, -9 and -13, and aggrecanase-1 (see above). IL-22 also induces MMP-1 and MMP-3. MMP-9 and MMP-13 are important in bone homeostasis and repair, whereas MMP-1 is important in collagen remodeling and keratinocyte migration [32, 153]. MMP-3 is normally induced in response to skin injury and contributes to wound contraction [154].

Functions of IL-17A/IL-22-producing murine  $\gamma\delta$  T cells in autoimmunity

IL-17A-producing  $\gamma\delta$  T cells can also prove pathogenic. Several autoimmune disease models have identified IL-17A-producing  $\gamma\delta$  T cells as being important in disease progression. As with any T cell population, inappropriate or sustained production of a proinflammatory cytokine can

have devastating consequences. For example, in a model of CIA, oligoclonal IL-17A-producing V $\gamma$ 4  $\gamma\delta$  T cells accumulate in the lymph nodes and joints of collagen-injected mice [117]. Depletion of V $\gamma$ 4  $\gamma\delta$  T cells greatly reduces disease severity consistent with a significant reduction in pathogenic anticollagen IgG2a [117]. IL-17A production by the joint-infiltrating  $\gamma\delta$  T cells is regulated by IL-23 and IL-1 $\beta$  but not by collagen itself [155]. This study, however, found a heterogeneous population of  $\gamma\delta$  T cells that produce IL-17A expressing V $\gamma$ 1, V $\gamma$ 2, V $\gamma$ 4, or V $\gamma$ 6 paired with either V $\delta$ 1 or V $\delta$ 5. IL-17A production by  $\gamma\delta$  T cells is also observed in the methylated bovine serum albumin antigen-induced arthritis model—another model that uses complete Freund's adjuvant (containing *M. tuberculosis*) with antigen to induce arthritis [156].

IL-17A induces the production of MMPs by synovocyte and inhibits new matrix synthesis by chondrocytes, which together results in cartilage destruction of the joints [15, 157–159]. IL-17A also affects the delicate balance between bone formation by osteoblasts and bone resorption by osteoclasts. IL-17A favors osteoclast differentiation through the induction of RANKL. This results in unbalanced bone resorption and loss of bone mass [20]. Although equal numbers of  $\alpha\beta$  and  $\gamma\delta$  T cells produce IL-17A in joints with CIA, CD4  $\alpha\beta$  T cells localize to bone and their deletion abrogates bone destruction. This suggests that CD4  $\alpha\beta$  T cells help mediate bone destruction while  $\gamma\delta$  T cells increase overall joint inflammation [110].

In two different models of neuroinflammation,  $\gamma\delta$  T cells play an important role in early activation and recruitment of cells through the release of IL-17A. In a mouse model of multiple sclerosis, experimental autoimmune encephalomyelitis (EAE),  $\gamma\delta$  T cells producing IL-17A accumulate in the brain [6, 122, 160]. Like the CIA model, IL-17A production by these cells requires IL-1 $\beta$  and IL-23 [6]. Although  $\gamma\delta$  cells alone are not sufficient to reconstitute disease ( $\alpha\beta$  T cells are also required),  $\gamma\delta$ -deficient mice have reduced EAE severity [6]. In addition to producing IL-17A,  $\gamma\delta$  T cells also inhibit CD4 Treg responses in EAE and reverse Treg suppression of  $\alpha\beta$  T cells in vitro [161].

IL-17A-mediated neuroinflammation also plays a major role in the pathogenesis of ischemia–reperfusion brain injury. In a mouse model of middle cerebral artery occlusion followed by reperfusion, Shichita et al. [162] identified IL-17A-producing  $\gamma\delta$  T cells within the infarct areas. In IL-17A-, IL-23- or  $\gamma\delta$  T cell-deficient mice, the infarct volume is reduced. IL-17A is especially neurotoxic in that it induces blood–brain barrier disruption and mediates recruitment of cells into the CNS [162–164]. From these studies a common mechanism emerges in which neuroinflammation resulting in local IL-23 and IL-1 $\beta$  induces infiltrating  $\gamma\delta$  T cell production of IL-17A, independently of a defined  $\gamma\delta$  TCR antigen.

Besides classic autoimmune diseases,  $\gamma\delta$  T cells producing IL-17A and IL-22 also play important roles in the development of inflammatory responses during infections/environmental exposures that cause tissue damage. Thus, in hypersensitivity pneumonitis induced by repeated inhalation of the nonpathogenic *B. subtilis* bacteria, V $\gamma$ 6V $\delta$ 1 T cells accumulate in the lung and produce IL-17A [165]. This accumulation requires live bacteria, whereas CD4  $\alpha\beta$  T cell recruitment does not [166]. In the absence of IL-17A signaling, bacteria persist longer in the lung and the mice develop increased lung inflammation and fibrosis [165]. The absence of V $\gamma$ 6V $\delta$ 1 T cells also leads to increased lung inflammation and fibrosis [166]. Besides IL-17A, V $\gamma$ 6V $\delta$ 1 T cells also produce IL-22 [138]. V $\gamma$ 6V $\delta$ 1 production of IL-22 requires the AHR and protects against lung fibrosis, whereas treatment with anti-IL-22 monoclonal antibodies increases fibrosis [138]. Similarly, the presence of IL-17A-producing  $\gamma\delta$  T cells shorten the recovery period in bleomycin-induced lung injury [167]. In contrast, in experimental silicosis both  $\gamma\delta$  and CD4  $\alpha\beta$  T cells mediate inflammation and the mice go on to develop fibrosis even in the absence of IL-17A (or IL-22) and even when treated with IL-22 [168]. Finally, in another murine model of “Farmer’s lung” caused by *Saccharopolyspora rectivirgula*, V $\gamma$ 6V $\delta$ 1 T cells again accumulate (albeit in lesser numbers) but there is no attenuation of lung fibrosis by  $\gamma\delta$  T cells although fibrosis does require IL-17A [169]. Thus,  $\gamma\delta$  T cells can mediate inflammation and can aid healing of lungs without fibrosis by producing IL-22, but their function varies according to the initiating stimuli.

IL-17A-producing  $\gamma\delta$  T cells also likely promote myocarditis in murine coxsackievirus B3-induced myocarditis [170, 171]. Murine V $\gamma$ 4<sup>+</sup>  $\gamma\delta$  T cells in infected mice are the earliest T cells infiltrating the myocardium where they are activated by CD1d and promote myocarditis [172]. A second population of  $\gamma\delta$  T cells expressing V $\gamma$ 1 receptors suppresses the development of myocarditis [170]. V $\gamma$ 4<sup>+</sup> T cells can transfer myocarditis and kill infected cardiocytes [173], and their deletion decreases myocarditis [174]. Anti-IL-17A antibody treatment ameliorates disease and improves survival [171], suggesting that these V $\gamma$ 4<sup>+</sup>  $\gamma\delta$  T cells produce IL-17A as in other diseases.

## Concluding remarks

Unlike murine  $\gamma\delta$  T cells, human V $\gamma$ 2V $\delta$ 2 T cells acquire IL-17A production post-thymically through a mechanism similar to Th17 polarization of  $\alpha\beta$  T cells (Fig. 1). Naive V $\gamma$ 2V $\delta$ 2 in the presence of HMBPP-producing microbes and the cytokines IL-6, IL-1 $\beta$ , and TGF- $\beta$  upregulate expression of ROR $\gamma$ t and become IL-17A-secreting T $\gamma\delta$ 17 cells. In the absence of these cytokines, V $\gamma$ 2V $\delta$ 2 T cells

upregulate T-bet expression leading to the generation of  $T\gamma\delta 1$  which have high levels of IL-12R $\beta 2$  and respond to IL-12.  $T\gamma\delta 17$  cells likely express both IL-12R $\beta 2$  and IL-23R, enabling them to become  $T\gamma\delta 1/17$  (through IL-23 signaling) or functionally  $T\gamma\delta 1$  (through IL-12 signaling), or to maintain the  $T\gamma\delta 17$  phenotype (through IL-23, IL-1 $\beta$ , and TGF- $\beta$  signaling).

Murine thymic  $\gamma\delta$  T cells have basal expression of ROR $\gamma t$  and Runx1 (Fig. 2), which in the absence of antigen and through thymic trans-conditioning, yield IL-17A-producing  $\gamma\delta$  T cells. Alternatively,  $\gamma\delta$  T cells, which possibly encounter antigen in the thymus, upregulate T-bet and become IFN- $\gamma$  producing  $T\gamma\delta 1$  cells. Phenotypically, the IL-17A-producing  $\gamma\delta$  cells express IL-23R, CD25, and CCR6 whereas IFN- $\gamma$ -producing  $\gamma\delta$  cells express NK1.1, CD27, and CD122. The IL-17A-producing  $\gamma\delta$  T cells require IL-23 and IL-1 in the periphery to maintain and reinforce expression of ROR $\gamma t$  and production of IL-17A, whereas  $T\gamma\delta 1$  cells require IL-12. Ligation of the AHR and its association with c-MAF, mediates acquisition of IL-22 production by the  $T\gamma\delta 17$  cells.

The involvement of IL-17A- and IL-22-producing  $\gamma\delta$  T cells in many diverse models of microbial, autoimmune, and inflammatory diseases underscores their importance in the initiation and resolution of acute inflammatory responses in a variety of settings. Despite their small numbers,  $\gamma\delta$  T cells can have large effects on the type of immune response and the disease outcome.

**Acknowledgments** We thank Drs. Hong Wang and Grefachew Workalemahu for critical reading of the manuscript. This work was supported by grants to C.T.M. from the National Institute of Arthritis and Musculoskeletal and Skin Disease (AR045504) and the Bill & Melinda Gates Foundation (Exploration OPP1006946). Kristin Ness-Schwickerath was supported by the National Institute of Allergy and Infectious Diseases (T32 AI007511).

## References

- Brenner MB, McLean J, Dialynas DP, Strominger JL, Smith JA, Owen FL, Seidman JG, Ip S, Rosen F, Krangel MS (1986) Identification of a putative second T-cell receptor. *Nature* 322:145–149
- Cerundolo V, Silk JD, Masri SH, Salio M (2009) Harnessing invariant NKT cells in vaccination strategies. *Nat Rev Immunol* 9:28–38
- Kronenberg M, Engel I (2007) On the road: progress in finding the unique pathway of invariant NKT cell differentiation. *Curr Opin Immunol* 19:186–193
- Cua DJ, Tato CM (2010) Innate IL-17-producing cells: the sentinels of the immune system. *Nat Rev Immunol* 10:479–489
- Lockhart E, Green AM, Flynn JL (2006) IL-17 production is dominated by  $\gamma\delta$  T cells rather than CD4 T cells during Mycobacterium tuberculosis infection. *J Immunol* 177:4662–4669
- Sutton CE, Lalor SJ, Sweeney CM, Brereton CF, Lavelle EC, Mills KH (2009) Interleukin-1 and IL-23 induce innate IL-17 production from  $\gamma\delta$  T cells, amplifying Th17 responses and autoimmunity. *Immunity* 31:331–341
- Martin B, Hirota K, Cua DJ, Stockinger B, Veldhoen M (2009) Interleukin-17-producing  $\gamma\delta$  T cells selectively expand in response to pathogen products and environmental signals. *Immunity* 31:321–330
- Shibata K, Yamada H, Hara H, Kishihara K, Yoshikai Y (2007) Resident V $\delta 1+$   $\gamma\delta$  T cells control early infiltration of neutrophils after Escherichia coli infection via IL-17 production. *J Immunol* 178:4466–4472
- Ness-Schwickerath KJ, Jin C, Morita CT (2010) Cytokine requirements for the differentiation and expansion of IL-17A- and IL-22-producing human V $\gamma 2V\delta 2$  T cells. *J Immunol* 184:7268–7280
- Fossiez F, Djossou O, Chomarat P, Flores-Romo L, Ait-Yahia S, Maat C, Pin JJ, Garrone P, Garcia E, Saeland S, Blanchard D, Gaillard C, Das Mahapatra B, Rouvier E, Golstein P, Banchereau J, Lebecque S (1996) T cell interleukin-17 induces stromal cells to produce proinflammatory and hematopoietic cytokines. *J Exp Med* 183:2593–2603
- Yao Z, Painter SL, Fanslow WC, Ulrich D, Macduff BM, Spriggs MK, Armitage RJ (1995) Human IL-17: a novel cytokine derived from T cells. *J Immunol* 155:5483–5486
- Park H, Li Z, Yang XO, Chang SH, Nurieva R, Wang YH, Wang Y, Hood L, Zhu Z, Tian Q, Dong C (2005) A distinct lineage of CD4 T cells regulates tissue inflammation by producing interleukin 17. *Nat Immunol* 6:1133–1141
- Shen F, Gaffen SL (2008) Structure-function relationships in the IL-17 receptor: implications for signal transduction and therapy. *Cytokine* 41:92–104
- Kao C-Y, Huang F, Chen Y, Thai P, Wachi S, Kim C, Tam L, Wu R (2005) Up-regulation of CC chemokine ligand 20 expression in human airway epithelium by IL-17 through a JAK-independent but MEK/NF- $\kappa$ B-dependent signaling pathway. *J Immunol* 175:6676–6685
- Chabaud M, Garnero P, Dayer J-M, Guerne P-A, Fossiez F, Miossec P (2000) Contribution of interleukin 17 to synovium matrix destruction in rheumatoid arthritis. *Cytokine* 12:1092–1099
- Bamba S, Andoh A, Yasui H, Araki Y, Bamba T, Fujiyama Y (2003) Matrix metalloproteinase-3 secretion from human colonic subepithelial myofibroblasts: role of interleukin-17. *J Gastroenterol* 38:548–554
- Sylvester J, Liacini A, Li WQ, Zafarullah M (2004) Interleukin-17 signal transduction pathways implicated in inducing matrix metalloproteinase-3, -13 and aggrecanase-1 genes in articular chondrocytes. *Cell Signal* 16:469–476
- Jovanovic DV, Martel-Pelletier J, Di Battista JA, Mineau F, Jolicoeur FC, Bendoric M, Pelletier JP (2000) Stimulation of 92-kd gelatinase (matrix metalloproteinase 9) production by interleukin-17 in human monocyte/macrophages: a possible role in rheumatoid arthritis. *Arthritis Rheum* 43:1134–1144
- Rifas L, Arackal S (2003) T cells regulate the expression of matrix metalloproteinase in human osteoblasts via a dual mitogen-activated protein kinase mechanism. *Arthritis Rheum* 48:993–1001
- Kotake S, Udagawa N, Takahashi N, Matsuzaki K, Itoh K, Ishiyama S, Saito S, Inoue K, Kamatani N, Gillespie MT, Martin TJ, Suda T (1999) IL-17 in synovial fluids from patients with rheumatoid arthritis is a potent stimulator of osteoclastogenesis. *J Clin Invest* 103:1345–1352
- Roussel L, Houle F, Chan C, Yao Y, Bérubé J, Olivenstein R, Martin JG, Huot J, Hamid Q, Ferri L, Rousseau S (2010) IL-17 promotes p38 MAPK-dependent endothelial activation enhancing neutrophil recruitment to sites of inflammation. *J Immunol* 184:4531–4537

22. Kao C-Y, Chen Y, Thai P, Wachi S, Huang F, Kim C, Harper RW, Wu R (2004) IL-17 markedly up-regulates  $\beta$ -defensin-2 expression in human airway epithelium via JAK and NF- $\kappa$ B signaling pathways. *J Immunol* 173:3482–3491
23. Fujisawa T, Velichko S, Thai P, Hung LY, Huang F, Wu R (2009) Regulation of airway MUC5AC expression by IL-1 $\beta$  and IL-17A; the NF- $\kappa$ B paradigm. *J Immunol* 183:6236–6243
24. Patel DN, King CA, Bailey SR, Holt JW, Venkatachalam K, Agrawal A, Valente AJ, Chandrasekar B (2007) Interleukin-17 stimulates C-reactive protein expression in hepatocytes and smooth muscle cells via p38 MAPK and ERK1/2-dependent NF- $\kappa$ B and C/EBP $\beta$  activation. *J Biol Chem* 282:27229–27238
25. Hartupce J, Liu C, Novotny M, Li X, Hamilton T (2007) IL-17 enhances chemokine gene expression through mRNA stabilization. *J Immunol* 179:4135–4141
26. Andoh A, Shimada M, Bamba S, Okuno T, Araki Y, Fujiyama Y, Bamba T (2002) Extracellular signal-regulated kinases 1 and 2 participate in interleukin-17 plus tumor necrosis factor- $\alpha$ -induced stabilization of interleukin-6 mRNA in human pancreatic myofibroblasts. *Biochim Biophys Acta* 1591:69–74
27. Hata K, Andoh A, Shimada M, Fujino S, Bamba S, Araki Y, Okuno T, Fujiyama Y, Bamba T (2002) IL-17 stimulates inflammatory responses via NF- $\kappa$ B and MAP kinase pathways in human colonic myofibroblasts. *Am J Physiol Gastrointest Liver Physiol* 282:G1035–G1044
28. van den Berg A, Kuiper M, Snoek M, Timens W, Postma DS, Jansen HM, Lutter R (2005) Interleukin-17 induces hyperresponsive interleukin-8 and interleukin-6 production to tumor necrosis factor- $\alpha$  in structural lung cells. *Am J Respir Cell Mol Biol* 33:97–104
29. Cai X-Y, Gommoll CP Jr, Justice L, Narula SK, Fine JS (1998) Regulation of granulocyte colony-stimulating factor gene expression by interleukin-17. *Immunol Lett* 62:51–58
30. Nograles KE, Zaba LC, Guttman-Yassky E, Fuentes-Duculan J, Suárez-Fariñas M, Cardinale I, Khatcherian A, Gonzalez J, Pierson KC, White TR, Pensabene C, Coats I, Novitskaya I, Lowes MA, Krueger JG (2008) Th17 cytokines interleukin (IL)-17 and IL-22 modulate distinct inflammatory and keratinocyte-response pathways. *Br J Dermatol* 159:1092–1102
31. Li W, Danilenko DM, Bunting S, Ganesan R, Sa S, Ferrando R, Wu TD, Kolumam GA, Ouyang W, Kirchhofer D (2009) The serine protease marapsin is expressed in stratified squamous epithelia and is up-regulated in the hyperproliferative epidermis of psoriasis and regenerating wounds. *J Biol Chem* 284:218–228
32. Wolk K, Witte E, Wallace E, Döcke WD, Kunz S, Asadullah K, Volk H-D, Sterry W, Sabat R (2006) IL-22 regulates the expression of genes responsible for antimicrobial defense, cellular differentiation, and mobility in keratinocytes: a potential role in psoriasis. *Eur J Immunol* 36:1309–1323
33. Korn T, Bettelli E, Oukka M, Kuchroo VK (2009) IL-17 and Th17 cells. *Annu Rev Immunol* 27:485–517
34. Zhou L, Chong MM, Littman DR (2009) Plasticity of CD4+ T cell lineage differentiation. *Immunity* 30:646–655
35. Yang XO, Pappu BP, Nurieva R, Akimzhanov A, Kang HS, Chung Y, Ma L, Shah B, Panopoulos AD, Schluns KS, Watowich SS, Tian Q, Jetten AM, Dong C (2008) T helper 17 lineage differentiation is programmed by orphan nuclear receptors ROR $\alpha$  and ROR $\gamma$ . *Immunity* 28:29–39
36. Chen Z, Laurence A, Kanno Y, Pacher-Zavisin M, Zhu BM, Tato C, Yoshimura A, Hennighausen L, O'Shea JJ (2006) Selective regulatory function of Socs3 in the formation of IL-17-secreting T cells. *Proc Natl Acad Sci U S A* 103:8137–8142
37. Brustle A, Heink S, Huber M, Rosenplanter C, Stadelmann C, Yu P, Arpaia E, Mak TW, Kamradt T, Lohoff M (2007) The development of inflammatory T(H)-17 cells requires interferon-regulatory factor 4. *Nat Immunol* 8:958–966
38. Huber M, Brustle A, Reinhard K, Guralnik A, Walter G, Mahiny A, von Low E, Lohoff M (2008) IRF4 is essential for IL-21-mediated induction, amplification, and stabilization of the Th17 phenotype. *Proc Natl Acad Sci U S A* 105:20846–20851
39. Zhang F, Meng G, Strober W (2008) Interactions among the transcription factors Runx1, ROR $\gamma$ t and Foxp3 regulate the differentiation of interleukin 17-producing T cells. *Nat Immunol* 9:1297–1306
40. Yang XO, Panopoulos AD, Nurieva R, Chang SH, Wang D, Watowich SS, Dong C (2007) STAT3 regulates cytokine-mediated generation of inflammatory helper T cells. *J Biol Chem* 282:9358–9363
41. McGeachy MJ, Chen Y, Tato CM, Laurence A, Joyce-Shaikh B, Blumenschein WM, McClanahan TK, O'Shea JJ, Cua DJ (2009) The interleukin 23 receptor is essential for the terminal differentiation of interleukin 17-producing effector T helper cells in vivo. *Nat Immunol* 10:314–324
42. Veldhoen M, Hocking RJ, Atkins CJ, Locksley RM, Stockinger B (2006) TGF $\beta$  in the context of an inflammatory cytokine milieu supports de novo differentiation of IL-17-producing T cells. *Immunity* 24:179–189
43. Das J, Ren G, Zhang L, Roberts AI, Zhao X, Bothwell AL, Van Kaer L, Shi Y, Das G (2009) Transforming growth factor  $\beta$  is dispensable for the molecular orchestration of Th17 cell differentiation. *J Exp Med* 206:2407–2416
44. Volpe E, Servant N, Zollinger R, Bogiatzi SI, Hupé P, Barillot E, Soumelis V (2008) A critical function for transforming growth factor- $\beta$ , interleukin 23 and proinflammatory cytokines in driving and modulating human T(H)-17 responses. *Nat Immunol* 9:650–657
45. Manel N, Unutmaz D, Littman DR (2008) The differentiation of human T(H)-17 cells requires transforming growth factor- $\beta$  and induction of the nuclear receptor ROR $\gamma$ t. *Nat Immunol* 9:641–649
46. Yang L, Anderson DE, Baecher-Allan C, Hastings WD, Bettelli E, Oukka M, Kuchroo VK, Hafler DA (2008) IL-21 and TGF- $\beta$  are required for differentiation of human T(H)17 cells. *Nature* 454:350–352
47. Santarlasci V, Maggi L, Capone M, Frosali F, Querci V, De Palma R, Liotta F, Cosmi L, Maggi E, Romagnani S, Annunziato F (2009) TGF- $\beta$  indirectly favors the development of human Th17 cells by inhibiting Th1 cells. *Eur J Immunol* 39:207–215
48. Delfau M-H, Hance AJ, Lecossier D, Vilmer E, Grandchamp B (1992) Restricted diversity of V $\gamma$ 9-JP rearrangements in unstimulated human  $\gamma\delta$  T lymphocytes. *Eur J Immunol* 22:2437–2443
49. McVay LD, Jaswal SS, Kennedy C, Hayday A, Carding SR (1998) The generation of human  $\gamma\delta$  T cell repertoires during fetal development. *J Immunol* 160:5851–5860
50. Krangel MS, Yssel H, Brocklehurst C, Spits H (1990) A distinct wave of human T cell receptor  $\gamma\delta$  lymphocytes in the early fetal thymus: evidence for controlled gene rearrangement and cytokine production. *J Exp Med* 172:847–859
51. Morita CT, Verma S, Aparicio P, Martinez AC, Spits H, Brenner MB (1991) Functionally distinct subsets of human  $\gamma\delta$  T cells. *Eur J Immunol* 21:2999–3007
52. Morita CT, Parker CM, Brenner MB, Band H (1994) T cell receptor usage and functional capabilities of human  $\gamma\delta$  T cells at birth. *J Immunol* 153:3979–3988
53. Parker CM, Groh V, Band H, Porcelli SA, Morita C, Fabbi M, Glass D, Strominger JL, Brenner MB (1990) Evidence for extrathymic changes in the T cell receptor  $\gamma\delta$  repertoire. *J Exp Med* 171:1597–1612
54. De Rosa SC, Andrus JP, Perfetto SP, Mantovani JJ, Herzenberg LA, Roederer M (2004) Ontogeny of  $\gamma\delta$  T cells in humans. *J Immunol* 172:1637–1645

55. Hintz M, Reichenberg A, Altincicek B, Bahr U, Gschwind RM, Kollas A-K, Beck E, Wiesner J, Eberl M, Jomaa H (2001) Identification of (E)-4-hydroxy-3-methyl-but-2-enyl pyrophosphate as a major activator for human  $\gamma\delta$  T cells in *Escherichia coli*. *FEBS Lett* 509:317–322
56. Puan K-J, Jin C, Wang H, Sarikonda G, Raker AM, Lee HK, Samuelson MI, Märker-Hermann E, Pasa-Tolic L, Nieves E, Giner J-L, Kuzuyama T, Morita CT (2007) Preferential recognition of a microbial metabolite by human  $V\gamma 2V\delta 2$  T cells. *Int Immunol* 19:657–673
57. Tanaka Y, Morita CT, Tanaka Y, Nieves E, Brenner MB, Bloom BR (1995) Natural and synthetic non-peptide antigens recognized by human  $\gamma\delta$  T cells. *Nature* 375:155–158
58. Kunzmann V, Bauer E, Wilhelm M (1999)  $\gamma\delta$  T-cell stimulation by pamidronate. *N Engl J Med* 340:737–738
59. Bukowski JF, Morita CT, Brenner MB (1999) Human  $\gamma\delta$  T cells recognize alkylamines derived from microbes, edible plants, and tea: implications for innate immunity. *Immunity* 11:57–65
60. Deusch K, Luling F, Reich K, Classen M, Wagner H, Pfeffer K (1991) A major fraction of human intraepithelial lymphocytes simultaneously expresses the  $\gamma\delta$  T cell receptor, the CD8 accessory molecule and preferentially uses the  $V\delta 1$  gene segment. *Eur J Immunol* 21:1053–1059
61. Groh V, Porcelli S, Fabbi M, Lanier LL, Picker LJ, Anderson T, Warnke RA, Bhan AK, Strominger JL, Brenner MB (1989) Human lymphocytes bearing T cell receptor  $\gamma\delta$  are phenotypically diverse and evenly distributed throughout the lymphoid system. *J Exp Med* 169:1277–1294
62. Ebert LM, Meuter S, Moser B (2006) Homing and function of human skin  $\gamma\delta$  T cells and NK cells: relevance for tumor surveillance. *J Immunol* 176:4331–4336
63. Porcelli S, Brenner MB, Greenstein JL, Balk SP, Terhorst C, Bleicher PA (1989) Recognition of cluster of differentiation 1 antigens by human CD4–CD8– cytolytic T lymphocytes. *Nature* 341:447–450
64. Faure F, Jitsukawa S, Miossec C, Hercend T (1990) CD1c as a target recognition structure for human T lymphocytes: analysis with peripheral blood  $\gamma\delta$  cells. *Eur J Immunol* 20:703–706
65. Spada FM, Grant EP, Peters PJ, Sugita M, Melián A, Leslie DS, Lee HK, van Donselaar E, Hanson DA, Krensky AM, Majdic O, Porcelli SA, Morita CT, Brenner MB (2000) Self recognition of CD1 by  $\gamma\delta$  T cells: implications for innate immunity. *J Exp Med* 191:937–948
66. Russano AM, Bassotti G, Agea E, Bistoni O, Mazzocchi A, Morelli A, Porcelli SA, Spinazzi F (2007) CD1-restricted recognition of exogenous and self-lipid antigens by duodenal  $\gamma\delta$ + T lymphocytes. *J Immunol* 178:3620–3626
67. Russano AM, Agea E, Corazzi L, Postle AD, De Libero G, Porcelli S, de Benedictis FM, Spinazzi F (2006) Recognition of pollen-derived phosphatidyl-ethanolamine by human CD1d-restricted  $\gamma\delta$  T cells. *J Allergy Clin Immunol* 117:1178–1184
68. Cui Y, Kang L, Cui L, He W (2009) Human  $\gamma\delta$  T cell recognition of lipid A is predominately presented by CD1b or CD1c on dendritic cells. *Biol Direct* 4:47
69. Groh V, Steinle A, Bauer S, Spies T (1998) Recognition of stress-induced MHC molecules by intestinal epithelial  $\gamma\delta$  T cells. *Science* 279:1737–1740
70. Groh V, Rhinehart R, Secrist H, Bauer S, Grabstein KH, Spies T (1999) Broad tumor-associated expression and recognition by tumor-derived  $\gamma\delta$  T cells of MICA and MICB. *Proc Natl Acad Sci U S A* 96:6879–6884
71. Wu J, Groh V, Spies T (2002) T cell antigen receptor engagement and specificity in the recognition of stress-inducible MHC class I-related chains by human epithelial  $\gamma\delta$  T cells. *J Immunol* 169:1236–1240
72. Zhao J, Huang J, Chen H, Cui L, He W (2006)  $V\delta 1$  T cell receptor binds specifically to MHC I chain related A: molecular and biochemical evidences. *Biochem Biophys Res Commun* 339:232–240
73. Das H, Groh V, Kuijl C, Sugita M, Morita CT, Spies T, Bukowski JF (2001) MICA engagement by human  $V\gamma 2V\delta 2$  T cells enhances their antigen-dependent effector function. *Immunity* 15:83–93
74. Vermijlen D, Brouwer M, Donner C, Liesnard C, Tackoen M, Van Rysselberge M, Twite N, Goldman M, Marchant A, Willems F (2010) Human cytomegalovirus elicits fetal  $\gamma\delta$  T cell responses in utero. *J Exp Med* 207:807–821
75. Pitard V, Roumanes D, Lafarge X, Couzi L, Garrigue I, Lafon M-E, Merville P, Moreau J-F, Déchanet-Merville J (2008) Long-term expansion of effector/memory  $V\delta 2$ – $\gamma\delta$  T cells is a specific blood signature of CMV infection. *Blood* 112:1317–1324
76. Déchanet J, Merville P, Lim A, Retière C, Pitard V, Lafarge X, Michelson S, Méric C, Hallet MM, Kourilsky P, Potaux L, Bonneville M, Moreau J-F (1999) Implication of  $\gamma\delta$  T cells in the human immune response to cytomegalovirus. *J Clin Invest* 103:1437–1449
77. Lafarge X, Merville P, Cazin M-C, Bergé F, Potaux L, Moreau J-F, Déchanet-Merville J (2001) Cytomegalovirus infection in transplant recipients resolves when circulating  $\gamma\delta$  T lymphocytes expand, suggesting a protective antiviral role. *J Infect Dis* 184:533–541
78. Halary F, Pitard V, Dlubek D, Krzysiek R, de la Salle H, Merville P, Dromer C, Emilie D, Moreau J-F, Déchanet-Merville J (2005) Shared reactivity of  $V\delta 2$ neg  $\gamma\delta$  T cells against cytomegalovirus-infected cells and tumor intestinal epithelial cells. *J Exp Med* 201:1567–1578
79. Annunziato F, Cosmi L, Santarlasci V, Maggi L, Liotta F, Mazzinghi B, Parente E, Fili L, Ferri S, Frosali F, Giudici F, Romagnani P, Parronchi P, Tonelli F, Maggi E, Romagnani S (2007) Phenotypic and functional features of human Th17 cells. *J Exp Med* 204:1849–1861
80. Yen H-R, Harris TJ, Wada S, Grosso JF, Getnet D, Goldberg MV, Liang K-L, Bruno TC, Pyle KJ, Chan S-L, Anders RA, Trimble CL, Adler AJ, Lin T-Y, Pardoll DM, Huang C-T, Drake CG (2009) Tc17 CD8 T cells: functional plasticity and subset diversity. *J Immunol* 183:7161–7168
81. Kondo T, Takata H, Matsuki F, Takiguchi M (2009) Phenotypic characterization and differentiation of human CD8+ T cells producing IL-17. *J Immunol* 182:1794–1798
82. Acosta-Rodriguez EV, Rivino L, Geginat J, Jarrossay D, Gattorno M, Lanzavecchia A, Sallusto F, Napolitani G (2007) Surface phenotype and antigenic specificity of human interleukin 17-producing T helper memory cells. *Nat Immunol* 8:639–646
83. Boniface K, Blumenschein WM, Brovont-Porth K, McGeachy MJ, Basham B, Desai B, Pierce R, McClanahan TK, Sadekova S, de Waal Malefyt R (2010) Human Th17 cells comprise heterogeneous subsets including IFN- $\gamma$ -producing cells with distinct properties from the Th1 lineage. *J Immunol* 185:679–687
84. Duhon T, Geiger R, Jarrossay D, Lanzavecchia A, Sallusto F (2009) Production of interleukin 22 but not interleukin 17 by a subset of human skin-homing memory T cells. *Nat Immunol* 10:857–863
85. Veldhoen M, Hirota K, Christensen J, O'Garra A, Stockinger B (2009) Natural agonists for aryl hydrocarbon receptor in culture medium are essential for optimal differentiation of Th17 T cells. *J Exp Med* 206:43–49
86. Wang H, Fang Z, Morita CT (2010)  $V\gamma 2V\delta 2$  T cell receptor recognition of prenyl pyrophosphates is dependent on all CDRs. *J Immunol* 184:6209–6222



87. Evans PS, Enders PJ, Yin C, Ruckwardt TJ, Malkovsky M, Pauza CD (2001) In vitro stimulation with a non-peptidic alkylphosphate expands cells expressing V $\gamma$ 2-J $\gamma$ 1.2/V $\delta$ 2 T-cell receptors. *Immunology* 104:19–27
88. Davodeau F, Peyrat M-A, Hallet M-M, Gaschet J, Houde I, Vivien R, Vie H, Bonneville M (1993) Close correlation between Daudi and mycobacterial antigen recognition by human  $\gamma\delta$  T cells and expression of V9JPC1 $\gamma$ /V2DJC $\delta$ -encoded T cell receptors. *J Immunol* 151:1214–1223
89. Yamashita S, Tanaka Y, Harazaki M, Mikami B, Minato N (2003) Recognition mechanism of non-peptide antigens by human  $\gamma\delta$  T cells. *Int Immunol* 15:1301–1307
90. Davodeau F, Peyrat MA, Hallet MM, Houde I, Vie H, Bonneville M (1993) Peripheral selection of antigen receptor junctional features in a major human  $\gamma\delta$  subset. *Eur J Immunol* 23:804–808
91. Tanaka Y, Sano S, Nieves E, De Libero G, Roca D, Modlin RL, Brenner MB, Bloom BR, Morita CT (1994) Nonpeptide ligands for human  $\gamma\delta$  T cells. *Proc Natl Acad Sci U S A* 91:8175–8179
92. De Libero G, Casorati G, Giachino C, Carbonara C, Migone N, Matzinger P, Lanzavecchia A (1991) Selection by two powerful antigens may account for the presence of the major population of human peripheral  $\gamma\delta$  T cells. *J Exp Med* 173:1311–1322
93. Moon JJ, Chu HH, Pepper M, McSorley SJ, Jameson SC, Kedl RM, Jenkins MK (2007) Naive CD4+ T cell frequency varies for different epitopes and predicts repertoire diversity and response magnitude. *Immunity* 27:203–213
94. Obar JJ, Khanna KM, Lefrancois L (2008) Endogenous naive CD8+ T cell precursor frequency regulates primary and memory responses to infection. *Immunity* 28:859–869
95. Peng MY, Wang ZH, Yao CY, Jiang LN, Jin QL, Wang J, Li BQ (2008) Interleukin 17-producing  $\gamma\delta$  T cells increased in patients with active pulmonary tuberculosis. *Cell Mol Immunol* 5:203–208
96. Yao S, Huang D, Chen CY, Halliday L, Zeng G, Wang RC, Chen ZW (2010) Differentiation, distribution and  $\gamma\delta$  T cell-driven regulation of IL-22-producing T cells in tuberculosis. *PLoS Pathog* 6:e1000789
97. Fenoglio D, Poggi A, Catellani S, Battaglia F, Ferrera A, Setti M, Murdaca G, Zocchi MR (2009) V $\delta$ 1 T lymphocytes producing IFN- $\gamma$  and IL-17 are expanded in HIV-1 infected patients and respond to *Candida albicans*. *Blood* 113:6611–6618
98. Huang W, Na L, Fidel PL, Schwarzenberger P (2004) Requirement of interleukin-17A for systemic anti-*Candida albicans* host defense in mice. *J Infect Dis* 190:624–631
99. Smeekens SP, van de Veerdonk FL, van der Meer JW, Kullberg BJ, Joosten LA, Netea MG (2010) The *Candida* Th17 response is dependent on mannan- and  $\beta$ -glucan-induced prostaglandin E2. *Int Immunol* 22:889–895
100. Boniface K, Bak-Jensen KS, Li Y, Blumenschein WM, McGeachy MJ, McClanahan TK, McKenzie BS, Kastelein RA, Cua DJ, de Waal Malefyt R (2009) Prostaglandin E2 regulates Th17 cell differentiation and function through cyclic AMP and EP2/EP4 receptor signaling. *J Exp Med* 206:535–548
101. Napolitani G, Acosta-Rodriguez EV, Lanzavecchia A, Sallusto F (2009) Prostaglandin E2 enhances Th17 responses via modulation of IL-17 and IFN- $\gamma$  production by memory CD4+ T cells. *Eur J Immunol* 39:1301–1312
102. van de Veerdonk FL, Teirlinck AC, Kleinnijenhuis J, Kullberg BJ, van Crevel R, van der Meer JWM, Joosten LAB, Netea MG (2010) Mycobacterium tuberculosis induces IL-17A responses through TLR4 and dectin-1 and is critically dependent on endogenous IL-1. *J Leukoc Biol* 88:227–232
103. Velilla PA, Rugeles MT, Chougnat CA (2006) Defective antigen-presenting cell function in human neonates. *Clin Immunol* 121:251–259
104. Ramsburg E, Tigelaar R, Craft J, Hayday A (2003) Age-dependent requirement for  $\gamma\delta$  T cells in the primary but not secondary protective immune response against an intestinal parasite. *J Exp Med* 198:1403–1414
105. Garcia AM, Fadel SA, Cao S, Sarzotti M (2000) T cell immunity in neonates. *Immunol Res* 22:177–190
106. Holt PG, Jones CA (2000) The development of the immune system during pregnancy and early life. *Allergy* 55:688–697
107. Arulanandam BP, Van Cleave VH, Metzger DW (1999) IL-12 is a potent neonatal vaccine adjuvant. *Eur J Immunol* 29:256–264
108. Kollmann TR, Crabtree J, Rein-Weston A, Blimkie D, Thommai F, Wang XY, Lavoie PM, Furlong J, Fortuno ES 3rd, Hajjar AM, Hawkins NR, Self SG, Wilson CB (2009) Neonatal innate TLR-mediated responses are distinct from those of adults. *J Immunol* 183:7150–7160
109. Gibbons DL, Haque SFY, Silberzahn T, Hamilton K, Langford C, Ellis P, Carr R, Hayday AC (2009) Neonates harbour highly active  $\gamma\delta$  T cells with selective impairments in preterm infants. *Eur J Immunol* 39:1794–1806
110. Pollinger B, Junt T, Metzler B, Walker UA, Tyndall A, Allard C, Bay S, Keller R, Raulf F, Di Padova F, O'Reilly T, Horwood NJ, Patel DD, Littlewood-Evans A (2011) Th17 cells, not IL-17+  $\gamma\delta$  T cells, drive arthritic bone destruction in mice and humans. *J Immunol* 186:2602–2612
111. Allison JP, Havran WL (1991) The immunobiology of T cells with invariant  $\gamma\delta$  antigen receptors. *Annu Rev Immunol* 9:679–705
112. Heilig JS, Tonegawa S (1986) Diversity of murine gamma genes and expression in fetal and adult T lymphocytes. *Nature* 322:836–840
113. Xiong N, Raulf DH (2007) Development and selection of  $\gamma\delta$  T cells. *Immunol Rev* 215:15–31
114. Shin S, El-Diwany R, Schaffert S, Adams EJ, Garcia KC, Pereira P, Chien Y-H (2005) Antigen recognition determinants of  $\gamma\delta$  T cell receptors. *Science* 308:252–255
115. Crowley MP, Faher AM, Baumgarth N, Hampl J, Gutgemann I, Teyton L, Chien Y-h (2000) A population of murine  $\gamma\delta$  T cells recognized an inducible MHC class Ib molecule. *Science* 287:314–316
116. Huber S, Sartini D, Exley M (2003) Role of CD1d in coxsackievirus B3-induced myocarditis. *J Immunol* 170:3147–3153
117. Roark CL, French JD, Taylor MA, Bendele AM, Born WK, O'Brien RL (2007) Exacerbation of collagen-induced arthritis by oligoclonal, IL-17-producing  $\gamma\delta$  T cells. *J Immunol* 179:5576–5583
118. Sciammas R, Johnson RM, Sperling AI, Brady W, Linsley PS, Spear PG, Fitch FW, Bluestone JA (1994) Unique antigen recognition by a herpesvirus-specific TCR- $\gamma\delta$  cell. *J Immunol* 152:5392–5397
119. Schild H, Mavaddat N, Litzemberger C, Ehrich EW, Davis MM, Bluestone JA, Matis L, Draper RK, Chien Y-h (1994) The nature of major histocompatibility complex recognition by  $\gamma\delta$  T cells. *Cell* 76:29–37
120. Ribot JC, deBarros A, Pang DJ, Neves JF, Peperzak V, Roberts SJ, Girardi M, Borst J, Hayday AC, Pennington DJ, Silva-Santos B (2009) CD27 is a thymic determinant of the balance between interferon- $\gamma$ - and interleukin 17-producing  $\gamma\delta$  T cell subsets. *Nat Immunol* 10:427–436
121. Cho JS, Pietras EM, Garcia NC, Ramos RI, Farzam DM, Monroe HR, Magorien JE, Blauvelt A, Kolls JK, Cheung AL, Cheng G, Modlin RL, Miller LS (2010) IL-17 is essential for host defense against cutaneous *Staphylococcus aureus* infection in mice. *J Clin Invest* 120:1762–1773
122. Jensen KD, Su X, Shin S, Li L, Youssef S, Yamasaki S, Steinman L, Saito T, Locksley RM, Davis MM, Baumgarth N, Chien YH (2008) Thymic selection determines  $\gamma\delta$  T cell effector

- fate: antigen-naïve cells make interleukin-17 and antigen-experienced cells make interferon  $\gamma$ . *Immunity* 29:90–100
123. Shibata K, Yamada H, Nakamura R, Sun X, Isumi M, Yoshikai Y (2008) Identification of CD25+  $\gamma\delta$  T cells as fetal thymus-derived naturally occurring IL-17 producers. *J Immunol* 181:5940–5947
  124. van Oosterwijk MF, Juwana H, Arens R, Tesselaar K, van Oers MH, Eldering E, van Lier RAW (2007) CD27–CD70 interactions sensitise naïve CD4+ T cells for IL-12-induced Th1 cell development. *Int Immunol* 19:713–718
  125. Haas JD, Gonzalez FH, Schmitz S, Chennupati V, Fohse L, Kremmer E, Forster R, Prinz I (2009) CCR6 and NK1.1 distinguish between IL-17A and IFN- $\gamma$ -producing effector T cells. *Eur J Immunol* 39:3488–3497
  126. Kisielow J, Kopf M, Karjalainen K (2008) SCART scavenger receptors identify a novel subset of adult  $\gamma\delta$  T cells. *J Immunol* 181:1710–1716
  127. Lochner M, Peduto L, Cherrier M, Sawa S, Langa F, Varona R, Riethmacher D, Si-Tahar M, Di Santo JP, Eberl G (2008) In vivo equilibrium of proinflammatory IL-17+ and regulatory IL-10+ Foxp3+ ROR $\gamma$ t+ T cells. *J Exp Med* 205:1381–1393
  128. Riol-Blanco L, Lazarevic V, Awasthi A, Mitsdoerffer M, Wilson BS, Croxford A, Waisman A, Kuchroo VK, Glimcher LH, Oukka M (2010) IL-23 receptor regulates unconventional IL-17-producing T cells that control bacterial infections. *J Immunol* 184:1710–1720
  129. Do JS, Fink PJ, Li L, Spolski R, Robinson J, Leonard WJ, Letterio JJ, Min B (2010) Spontaneous development of IL-17-producing  $\gamma\delta$  T cells in the thymus occurs via a TGF- $\beta$ 1-dependent mechanism. *J Immunol* 184:1675–1679
  130. Duan J, Chung H, Troy E, Kasper DL (2010) Microbial colonization drives expansion of IL-1 receptor 1-expressing and IL-17-producing  $\gamma\delta$  T cells. *Cell Host Microbe* 7:140–150
  131. Nakamura R, Shibata K, Yamada H, Shimoda K, Nakayama K, Yoshikai Y (2008) Tyk2-signaling plays an important role in host defense against *Escherichia coli* through IL-23-induced IL-17 production by  $\gamma\delta$  T cells. *J Immunol* 181:2071–2075
  132. Shaw MH, Boyartchuk V, Wong S, Karaghiosoff M, Ragimbeau J, Pellegrini S, Muller M, Dietrich WF, Yap GS (2003) A natural mutation in the Tyk2 pseudokinase domain underlies altered susceptibility of B10.Q/J mice to infection and autoimmunity. *Proc Natl Acad Sci U S A* 100:11594–11599
  133. Staschke KA, Dong S, Saha J, Zhao J, Brooks NA, Hepburn DL, Xia J, Gulen MF, Kang Z, Altuntas CZ, Tuohy VK, Gilmour R, Li X, Na S (2009) IRAK4 kinase activity is required for Th17 differentiation and Th17-mediated disease. *J Immunol* 183:568–577
  134. Nguyen LP, Bradfield CA (2008) The search for endogenous activators of the aryl hydrocarbon receptor. *Chem Res Toxicol* 21:102–116
  135. Kimura A, Naka T, Nohara K, Fujii-Kuriyama Y, Kishimoto T (2008) Aryl hydrocarbon receptor regulates Stat1 activation and participates in the development of Th17 cells. *Proc Natl Acad Sci U S A* 105:9721–9726
  136. Apetoh L, Quintana FJ, Pot C, Joller N, Xiao S, Kumar D, Burns EJ, Sherr DH, Weiner HL, Kuchroo VK (2010) The aryl hydrocarbon receptor interacts with c-Maf to promote the differentiation of type 1 regulatory T cells induced by IL-27. *Nat Immunol* 11:854–861
  137. Veldhoen M, Hirota K, Westendorf AM, Buer J, Dumoutier L, Renault J-C, Stockinger B (2008) The aryl hydrocarbon receptor links TH17-cell-mediated autoimmunity to environmental toxins. *Nature* 453:106–109
  138. Simonian PL, Wehrmann F, Roark CL, Born WK, O'Brien RL, Fontenot AP (2010)  $\gamma\delta$  T cells protect against lung fibrosis via IL-22. *J Exp Med* 207:2239–2253
  139. Stark MA, Huo Y, Burcin TL, Morris MA, Olson TS, Ley K (2005) Phagocytosis of apoptotic neutrophils regulates granulopoiesis via IL-23 and IL-17. *Immunity* 22:285–294
  140. Flierl MA, Rittirsch D, Gao H, Hoessel LM, Nadeau BA, Day DE, Zetoune FS, Sarma JV, Huber-Lang MS, Ferrara JLM, Ward PA (2008) Adverse functions of IL-17A in experimental sepsis. *FASEB J* 22:2198–2205
  141. Ribot JC, Chaves-Ferreira M, d'Orey F, Wencker M, Gonçalves-Sousa N, Decalf J, Simas JP, Hayday AC, Silva-Santos B (2010) Cutting edge: adaptive versus innate receptor signals selectively control the pool sizes of murine IFN- $\gamma$ - or IL-17-producing  $\gamma\delta$  T cells upon infection. *J Immunol* 185:6421–6425
  142. Aydintug MK, Roark CL, Chain JL, Born WK, O'Brien RL (2008) Macrophages express multiple ligands for  $\gamma\delta$  TCRs. *Mol Immunol* 45:3253–3263
  143. Aydintug MK, Roark CL, Yin X, Wands JM, Born WK, O'Brien RL (2004) Detection of cell surface ligands for the  $\gamma\delta$  TCR using soluble TCRs. *J Immunol* 172:4167–4175
  144. Hamada S, Umemura M, Shiono T, Hara H, Kishihara K, Tanaka K, Mayuzumi H, Ohta T, Matsuzaki G (2008) Importance of murine V $\delta$ 1+  $\gamma\delta$  T cells expressing interferon- $\gamma$  and interleukin-17A in innate protection against *Listeria monocytogenes* infection. *Immunology* 125:170–177
  145. Hamada S, Umemura M, Shiono T, Tanaka K, Yahagi A, Begum MD, Oshiro K, Okamoto Y, Watanabe H, Kawakami K, Roark C, Born WK, O'Brien R, Ikuta K, Ishikawa H, Nakae S, Iwakura Y, Ohta T, Matsuzaki G (2008) IL-17A produced by  $\gamma\delta$  T cells plays a critical role in innate immunity against *Listeria monocytogenes* infection in the liver. *J Immunol* 181:3456–3463
  146. Mombaerts P, Arnoldi J, Russ F, Tonegawa S, Kaufmann SHE (1993) Different roles of  $\alpha\beta$  and  $\gamma\delta$  T cells in immunity against an intracellular bacterial pathogen. *Nature* 365:53–56
  147. Fu Y-X, Roark CE, Kelly K, Drevets D, Campbell P, O'Brien R, Born W (1994) Immune protection and control of inflammatory tissue necrosis by  $\gamma\delta$  T cells. *J Immunol* 153:3101–3115
  148. Meeks KD, Sieve AN, Kolls JK, Ghilardi N, Berg RE (2009) IL-23 is required for protection against systemic infection with *Listeria monocytogenes*. *J Immunol* 183:8026–8034
  149. Okamoto Yoshida Y, Umemura M, Yahagi A, O'Brien RL, Ikuta K, Kishihara K, Hara H, Nakae S, Iwakura Y, Matsuzaki G (2010) Essential role of IL-17A in the formation of a mycobacterial infection-induced granuloma in the lung. *J Immunol* 184:4414–4422
  150. Umemura M, Yahagi A, Hamada S, Begum MD, Watanabe H, Kawakami K, Suda T, Sudo K, Nakae S, Iwakura Y, Matsuzaki G (2007) IL-17-mediated regulation of innate and acquired immune response against pulmonary *Mycobacterium bovis* bacille Calmette-Guérin infection. *J Immunol* 178:3786–3796
  151. Khader SA, Bell GK, Pearl JE, Fountain JJ, Rangel-Moreno J, Cilley GE, Shen F, Eaton SM, Gaffen SL, Swain SL, Locksley RM, Haynes L, Randall TD, Cooper AM (2007) IL-23 and IL-17 in the establishment of protective pulmonary CD4+ T cell responses after vaccination and during *Mycobacterium tuberculosis* challenge. *Nat Immunol* 8:369–377
  152. Liang SC, Tan XY, Luxenberg DP, Karim R, Dunussi-Joannopoulos K, Collins M, Fouser LA (2006) Interleukin (IL)-22 and IL-17 are coexpressed by Th17 cells and cooperatively enhance expression of antimicrobial peptides. *J Exp Med* 203:2271–2279
  153. Löffek S, Schilling O, Franzke C-W (2010) Biological role of matrix metalloproteinases: a critical balance. *Eur Respir J* (in press). doi:10.1183/09031936.00029109
  154. Bullard KM, Lund L, Mudgett JS, Mellin TN, Hunt TK, Murphy B, Ronan J, Werb Z, Banda MJ (1999) Impaired wound contraction in stromelysin-1-deficient mice. *Ann Surg* 230:260–265

155. Ito Y, Usui T, Kobayashi S, Iguchi-Hashimoto M, Ito H, Yoshitomi H, Nakamura T, Shimizu M, Kawabata D, Yukawa N, Hashimoto M, Sakaguchi N, Sakaguchi S, Yoshifuji H, Nojima T, Ohmura K, Fujii T, Mimori T (2009) Gamma/delta T cells are the predominant source of interleukin-17 in affected joints in collagen-induced arthritis, but not in rheumatoid arthritis. *Arthritis Rheum* 60:2294–2303
156. Cornelissen F, Mus AM, Asmawidjaja PS, van Hamburg JP, Tocker J, Lubberts E (2009) Interleukin-23 is critical for full-blown expression of a non-autoimmune destructive arthritis and regulates interleukin-17A and ROR $\gamma$ t in  $\gamma\delta$  T cells. *Arthritis Res Ther* 11:R194
157. Chabaud M, Lubberts E, Joosten L, van Den Berg W, Miossec P (2001) IL-17 derived from juxta-articular bone and synovium contributes to joint degradation in rheumatoid arthritis. *Arthritis Res* 3:168–177
158. van Bezooijen RL, van der Wee-Pals L, Papapoulos SE, Löwik CW (2002) Interleukin 17 synergises with tumour necrosis factor  $\alpha$  to induce cartilage destruction in vitro. *Ann Rheum Dis* 61:870–876
159. Moran EM, Mullan R, McCormick J, Connolly M, Sullivan O, Fitzgerald O, Bresnihan B, Veale DJ, Fearon U (2009) Human rheumatoid arthritis tissue production of IL-17A drives matrix and cartilage degradation: synergy with tumour necrosis factor- $\alpha$ , Oncostatin M and response to biologic therapies. *Arthritis Res Ther* 11:R113
160. Wohler JE, Smith SS, Zinn KR, Bullard DC, Barnum SR (2009)  $\gamma\delta$  T cells in EAE: early trafficking events and cytokine requirements. *Eur J Immunol* 39:1516–1526
161. Petermann F, Rothhammer V, Claussen MC, Haas JD, Blanco LR, Heink S, Prinz I, Hemmer B, Kuchroo VK, Oukka M, Korn T (2010)  $\gamma\delta$  T cells enhance autoimmunity by restraining regulatory T cell responses via an interleukin-23-dependent mechanism. *Immunity* 33:351–363
162. Shichita T, Sugiyama Y, Ooboshi H, Sugimori H, Nakagawa R, Takada I, Iwaki T, Okada Y, Iida M, Cua DJ, Iwakura Y, Yoshimura A (2009) Pivotal role of cerebral interleukin-17-producing  $\gamma\delta$  T cells in the delayed phase of ischemic brain injury. *Nat Med* 15:946–950
163. Kebir H, Kreymborg K, Ifergan I, Dodelet-Devillers A, Cayrol R, Bernard M, Giuliani F, Arbour N, Becher B, Prat A (2007) Human TH17 lymphocytes promote blood-brain barrier disruption and central nervous system inflammation. *Nat Med* 13:1173–1175
164. Huppert J, Closhen D, Croxford A, White R, Kulig P, Pietrowski E, Bechmann I, Becher B, Luhmann HJ, Waisman A, Kuhlmann CR (2010) Cellular mechanisms of IL-17-induced blood-brain barrier disruption. *FASEB J* 24:1023–1034
165. Simonian PL, Roark CL, Wehrmann F, Lanham AM, Born WK, O'Brien RL, Fontenot AP (2009) IL-17A-expressing T cells are essential for bacterial clearance in a murine model of hypersensitivity pneumonitis. *J Immunol* 182:6540–6549
166. Simonian PL, Roark CL, Diaz del Valle F, Palmer BE, Douglas IS, Ikuta K, Born WK, O'Brien RL, Fontenot AP (2006) Regulatory role of  $\gamma\delta$  T cells in the recruitment of CD4+ and CD8+ T cells to lung and subsequent pulmonary fibrosis. *J Immunol* 177:4436–4443
167. Braun RK, Ferrick C, Neubauer P, Sjoding M, Sterner-Kock A, Kock M, Putney L, Ferrick DA, Hyde DM, Love RB (2008) IL-17 producing  $\gamma\delta$  T cells are required for a controlled inflammatory response after bleomycin-induced lung injury. *Inflammation* 31:167–179
168. Lo Re S, Dumoutier L, Couillin I, Van Vyve C, Yakoub Y, Uwambayinema F, Marien B, van den Brûle S, Van Snick J, Uyttenhove C, Ryffel B, Renaud J-C, Lison D, Huaux F (2010) IL-17A-producing  $\gamma\delta$  T and Th17 lymphocytes mediate lung inflammation but not fibrosis in experimental silicosis. *J Immunol* 184:6367–6377
169. Simonian PL, Roark CL, Wehrmann F, Lanham AK, Diaz del Valle F, Born WK, O'Brien RL, Fontenot AP (2009) Th17-polarized immune response in a murine model of hypersensitivity pneumonitis and lung fibrosis. *J Immunol* 182:657–665
170. Huber SA, Graveline D, Newell MK, Born WK, O'Brien RL (2000) V $\gamma$ 1+ T cells suppress and V $\gamma$ 4+ T cells promote susceptibility to coxsackievirus B3-induced myocarditis in mice. *J Immunol* 165:4174–4181
171. Fan Y, Weifeng W, Yuluan Y, Qing K, Yu P, Yanlan H (2011) Treatment with a neutralizing anti-murine interleukin-17 antibody after the onset of coxsackievirus B3-induced viral myocarditis reduces myocardium inflammation. *Virology* 8:17
172. Huber SA (2005) Increased susceptibility of male BALB/c mice to coxsackievirus B3-induced myocarditis: role for CD1d. *Med Microbiol Immunol* 194:121–127
173. Huber SA, Born W, O'Brien R (2005) Dual functions of murine  $\gamma\delta$  cells in inflammation and autoimmunity in coxsackievirus B3-induced myocarditis: role of V $\gamma$ 1+ and V $\gamma$ 4+ cells. *Microbes Infect* 7:537–543
174. Huber SA, Graveline D, Born WK, O'Brien RL (2001) Cytokine production by V $\gamma$ +T-cell subsets is an important factor determining CD4+-Th-cell phenotype and susceptibility of BALB/c mice to coxsackievirus B3-induced myocarditis. *J Virol* 75:5860–5869
175. Balbi B, Valle MT, Oddera S, Giunti D, Manca F, Rossi GA, Allegra L (1993) T-lymphocytes with  $\gamma\delta$ + V $\delta$ 2+ antigen receptors are present in increased proportions in a fraction of patients with tuberculosis or with sarcoidosis. *Am Rev Respir Dis* 148:1685–1690
176. Ito M, Kojiro N, Ikeda T, Ito T, Funada J, Kokubu T (1992) Increased proportions of peripheral blood  $\gamma\delta$  T cells in patients with pulmonary tuberculosis. *Chest* 102:195–197
177. Ueta C, Tsuyuguchi I, Kawasumi H, Takashima T, Toba H, Kishimoto S (1994) Increase of  $\gamma\delta$  T cells in hospital workers who are in close contact with tuberculosis patients. *Infect Immun* 62:5434–5441
178. Dieli F, Sireci G, Di Sano C, Champagne E, Fournié J-J, Salerno JI (1999) Predominance of V $\gamma$ 9/V $\delta$ 2 T lymphocytes in the cerebrospinal fluid of children with tuberculous meningitis: reversal after chemotherapy. *Mol Med* 5:301–312
179. Modlin RL, Pirmez C, Hofman FM, Torigian V, Uyemura K, Rea TH, Bloom BR, Brenner MB (1989) Lymphocytes bearing antigen-specific  $\gamma\delta$  T-cell receptors accumulate in human infectious disease lesions. *Nature* 339:544–548
180. Sumida T, Maeda T, Takahashi H, Yoshida S, Yonaha F, Sakamoto A, Tomioka H, Koike T, Yoshida S (1992) Predominant expansion of V $\gamma$ 9/V $\delta$ 2 T cells in a tularemia patient. *Infect Immun* 60:2554–2558
181. Poquet Y, Kroca M, Halary F, Stenmark S, Peyrat M-A, Bonneville M, Fournié JJ, Sjöstedt A (1998) Expansion of V $\gamma$ 9V $\delta$ 2 T cells is triggered by Francisella tularensis-derived phosphoantigens in tularemia but not after tularemia vaccination. *Infect Immun* 66:2107–2114
182. Kroca M, Tärnvik A, Sjöstedt A (2000) The proportion of circulating  $\gamma\delta$  T cells increases after the first week of onset of tularemia and remains elevated for more than a year. *Clin Exp Immunol* 120:280–284
183. Hara T, Mizuno Y, Takaki K, Takada H, Akeda H, Aoki T, Nagata M, Ueda K, Matsuzaki G, Yoshikai Y, Nomoto K (1992) Predominant activation and expansion of V $\gamma$ 9-bearing  $\gamma\delta$  T cells in vivo as well as in vitro in Salmonella infection. *J Clin Invest* 90:204–210

184. Kroca M, Johansson A, Sjöstedt A, Tärnvik A (2001) V $\gamma$ 9V $\delta$ 2 T cells in human legionellosis. *Clin Diagn Lab Immunol* 8:949–954
185. Bertotto A, Gerli R, Spinozzi F, Muscat C, Scalise F, Castellucci G, Sposito M, Candio F, Vaccaro R (1993) Lymphocytes bearing the  $\gamma\delta$  T cell receptor in acute *Brucella melitensis* infection. *Eur J Immunol* 23:1177–1180
186. Schneider T, Jahn HU, Liesenfeld O, Steinhoff D, Riecken EO, Zeitz M, Ullrich R (1997) The number and proportion of V $\gamma$ 9/V $\delta$ 2 T cells rise significantly in the peripheral blood of patients after the onset of acute *Coxiella burnetii* infection. *Clin Infect Dis* 24:261–264
187. Caldwell CW, Everett ED, McDonald G, Yesus YW, Roland WE (1995) Lymphocytosis of  $\gamma/\delta$  T cells in human ehrlichiosis. *Am J Clin Pathol* 103:761–766
188. Raziuddin S, Mir NA, el-Awad M el-H, Telmasani AW, al-Janadi M (1994)  $\gamma\delta$  T lymphocytes and proinflammatory cytokines in bacterial meningitis. *J Allergy Clin Immunol* 93:793–798
189. Jouen-Beades F, Paris E, Dieulois C, Lemeland J-F, Barre-Dezelus V, Marret S, Humbert G, Leroy J, Tron F (1997) In vivo and in vitro activation and expansion of  $\gamma\delta$  T cells during *Listeria monocytogenes* infection in humans. *Infect Immun* 65:4267–4272
190. Ho M, Webster HK, Tongtawe P, Pattanapanyasat K, Weidanz WP (1990) Increased  $\gamma\delta$  T cells in acute *Plasmodium falciparum* malaria. *Immunol Lett* 25:139–142
191. Roussilhon C, Agrapart M, Ballet J-J, Bensussan A (1990) T lymphocytes bearing the  $\gamma\delta$  T cell receptor in patients with acute *Plasmodium falciparum* malaria. *J Infect Dis* 162:283–285
192. Schwartz E, Shapiro R, Shina S, Bank I (1996) Delayed expansion of V $\delta$ 2+ and V $\delta$ 1+  $\gamma\delta$  T cells after acute *Plasmodium falciparum* and *Plasmodium vivax* malaria. *J Allergy Clin Immunol* 97:1387–1392
193. Perera MK, Carter R, Goonewardene R, Mendis KN (1994) Transient increase in circulating  $\gamma/\delta$  T cells during *Plasmodium vivax* malarial paroxysms. *J Exp Med* 179:311–315
194. Scalise F, Gerli R, Castellucci G, Spinozzi F, Fabietti GM, Crupi S, Sensi L, Britta R, Vaccaro R, Bertotto A (1992) Lymphocytes bearing the  $\gamma\delta$  T-cell receptor in acute toxoplasmosis. *Immunology* 76:668–670
195. Raziuddin S, Telmasani AW, El-Awad ME, Al-Amari O, Al-Janadi M (1992)  $\gamma\delta$  T cells and the immune response in visceral leishmaniasis. *Eur J Immunol* 22:1143–1148
196. Russo DM, Armitage RJ, Barral NM, Barral A, Grabstein KH, Reed SG (1993) Antigen-reactive  $\gamma\delta$  T cells in human leishmaniasis. *J Immunol* 151:3712–3718