

L2, a DNA fragment from Xq24-q27, detects an EcoRI RFLP (HGM9 no. DXS12)

J.Skare, J.Milunsky and A.Milunsky

Boston University School of Medicine, Boston, MA, USA

SOURCE/DESCRIPTION: L2 is a 4.8kb Hind III fragment from an X-chromosome phage library which is inserted in pBR322.

POLYMORPHISM: EcoRI identifies a 2-allele RFLP with A1=4.4kb, A2=3.6kb. A constant band of 2.9kb is also observed.

FREQUENCY: 69 chromosomes from unrelated U.S. residents were studied. 48 were derived from Europe, 15 from Central America, and 6 from Africa. A1=.81, A2=.19

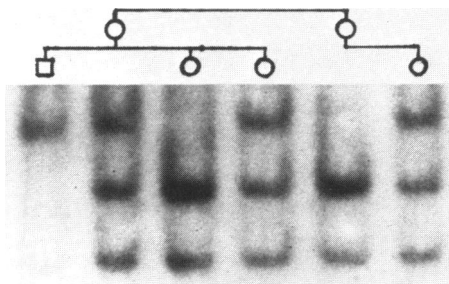
CHROMOSOMAL LOCALISATION: A somatic cell hybrid panel localized L2 to Xq24-qter. Linkage analysis restricts its location to Xq24-q27.

MENDELIAN INHERITANCE: Codominant Mendelian inheritance was observed in 3 families with a total of over 50 children.

PROBE AVAILABILITY: Available from James Skare, L402, B.U.S.M., 80 East Concord Street, Boston, MA 02118.

REFERENCE: L. Kunkel, U. Tantravahi, M. Eisenhard and S. Latt (1982) Nucleic Acids Research 10:1557-1578.

ACKNOWLEDGEMENTS: Supported by grants from the Charles H. Hood Foundation and the Massachusetts Division of the American Cancer Society.



DNA from members of a Hispanic family was digested with EcoRI and probed with L2.