

---

**Transcription analysis of the *lexA* gene of *Escherichia coli*: attenuation and cotranscription with the neighboring region**

---

Toru Miki, Komei Shirabe, Yousuke Ebina and Atsushi Nakazawa

---

Department of Biochemistry, Yamaguchi University School of Medicine, Ube, Yamaguchi 755, Japan

---

Received 27 October 1983; Accepted 6 December 1983

---

### SUMMARY

The *lexA* gene of *Escherichia coli* encodes a repressor of the genes whose expression is induced by the agents that result in DNA damage. *In vivo* transcripts of the *lexA* gene consisted of two species; mRNA-1 of 673 bases and mRNA-2 of approximately 3,000 bases. The transcription *in vivo* started at a site which was two-base pairs downstream from the *in vitro* initiation site reported previously. The majority of the transcription stopped at a series of T residues preceded by a dyad symmetry located immediately after the *lexA* gene. A small fraction of the transcription passed through the termination site to form the mRNA of downstream gene(s) which would be related to the "SOS functions".

### INTRODUCTION

When *Escherichia coli* cells are treated with agents such as ultraviolet light (UV) or mitomycin C (MTC), a variety of cellular functions are induced. These "SOS functions" include excision repair, mutagenesis, inhibition of cell division, and prophage and colicin inductions (1). A set of genes responsible for "SOS functions" are repressed by the *lexA* gene product (2). Upon treatment of the cells by the agents which cause degradation of DNA, the *recA* gene product is "activated" to gain a protease activity and then cleaves *lexA* protein (3,4). The proteolytic inactivation of *lexA* protein, which is also the repressor of the *recA* gene, leads to increased synthesis of *recA* protein which stimulates the inactivation of *lexA* protein. Since the *lexA* gene itself is repressed by its own product, expression of the gene is also enhanced by the inducing treatments (5,6).

In a previous work (7), the *lexA* and its neighboring regions were organized. In the cell-free system for protein synthesis, two major protein products were identified to be encoded in this region: one is *lexA* protein (24 kilodaltons (kd)) and the other, a protein of 35 kd. The gene for the 35-kd protein, tentatively named as *lexD* here, was located in the downstream region of the *lexA* gene. Transcription R loop analysis of the *lexA-lexD*

region showed that the transcription started from a site in front of the *lexA* gene, and did not terminate at a fixed point. A small amount of longer *in vitro* transcripts extended to the *lexD* region. Thus a possibility arose that the *lexD* region was cotranscribed with the *lexA* gene.

This report describes the analysis of the *lexA* transcription *in vivo*. By using S1 nuclease mapping and RNA blot hybridization techniques, we determined the initiation and termination sites for transcription of the *lexA* gene. Evidence is also presented that the transcription of the *lexA* gene is attenuated at a sequence located immediately after the *lexA* coding frame.

## MATERIALS AND METHODS

Bacterial Strains and Plasmids: C600S (*thr*, *leu*, *supE*) and W3110 (*gal*, *lac*) are the laboratory stocks and were used as *lexA*<sup>+</sup> strains of *Escherichia coli* K-12. DM1187 (*spr-51*, *lexA3*, *tif-1*, *sfiA11*, *sup-37*, *thr*, *leu*, *his*, *ilv* (*ts*), *pro*, *gal*, *rpsL*) (8) was used as a *lexA*<sup>-</sup>(*Def*) strain in which autogenous regulation of the *lexA* gene is released. KT5371 (F' *gal3*; *trpE9851*,  $\Delta$ *chl-bio*, *recA1*) carrying a defective  $\lambda$  phage (a gift from K. Shigesada) was used as a *recA*<sup>-</sup> strain. The genetic markers, except *recA1*, of the strain are not relevant here. A Lac<sup>-</sup> strain MC1000 ( $\Delta$  *lacX74*,  $\Delta$  *ara-leu*, *araD139*, *galU*, *galK*, *rpsL*) and a plasmid carrying the *lacZ* structural gene, pMC1403, were gifts of M. Casadaban (9). The plasmid carries the most part of the *lacZ* structural gene but the first eight codons for the amino-terminal end of  $\beta$ -galactosidase are lacking (9). pLC44-14 and pMCR551 are the plasmid carrying the *lexA* gene as described previously (7). pMCR780 is a plasmid carrying the tetracycline- and kanamycin-resistance genes (T. Miki, unpublished) and is a derivative of pKN410, a runaway-replication plasmid whose copy number increases at 40°C (10). Bacteria were grown in L broth (1% tryptone, 0.5% yeast extract, 0.5% NaCl, and 0.1% glucose, pH 7.2).

Construction of Plasmids: Molecular cloning was carried out as described previously (11). T4 DNA ligase and restriction enzymes were purchased from Takara Shuzo (Kyoto, Japan), except BclI, DdeI, NciI (from Bethesda Research Laboratories), and PvuI (from New England BioLabs). Plasmids were constructed as follows. pMCR811 was constructed by cloning of the DNA fragment containing the *lexA-lexD* region into pMC1403. pMCR551 was completely digested with EcoRI and then partially with AluI. The digested DNA was mixed with pMC1403 DNA which had been cleaved with EcoRI and SmaI, and then ligated (Fig. 1A). The *lacZ* deletion strain MC1000 was transformed to ampicillin resistance by the ligated DNA. From the transformants, pMCR811

was isolated as a plasmid carrying the DNA segment from the EcoRI to AluI-3 sites of pMCR551 (Fig. 1B). pMCR821 was constructed by subcloning of the major EcoRI-SalI fragment of pMCR811 (Fig. 1A) into a runaway replication vector pMCR780. pMCR819 was constructed by cloning of the 5.25-kb BamHI-BglII fragment of pLC44-14 into the unique BamHI site on pMCR780.

**Inducing Treatments:** Induction was done by the addition of MTC (0.8  $\mu\text{g/ml}$ ) into the log-phase culture and shaking at 37°C for 1 hr, except in pMCR819-harboring cells which were induced by heat and MTC treatments as follows. W3110(pMCR819) was grown to the log-phase at 30°C, and the culture was shifted to 42°C. After 30 min, MTC (0.8  $\mu\text{g/ml}$ ) was added to the culture, and it was further shaken for 30 min. Then the culture was shifted down to 30°C and shaken for additional 30 min.  $\beta$ -Galactosidase activities before and after MTC treatment were determined according to Platt et al. (12).

**Labeling of DNA Fragments:** The 3' ends of DNA fragments were labeled with [ $\alpha$ - $^{32}\text{P}$ ] dCTP (3,000 Ci/mmol; Radiochemical Centre, Amersham) and T4 DNA DNA polymerase (Takara Shuzo, Kyoto). The reaction mixture contained 63 mM  $\text{MgCl}_2$ , 6.3 mM  $\beta$ -mercaptoethanol, 0.1 mM each of dATP, dGTP, and dTTP, 0.5  $\mu\text{M}$  [ $\alpha$ - $^{32}\text{P}$ ]dCTP (30  $\mu\text{Ci}$ ), 0.5 pmol DNA fragment, and 3.2 units T4 DNA polymerase in 20  $\mu\text{l}$ . After incubation at 11°C for 130 min,  $\text{Na}_2\text{EDTA}$  was added to give a concentration of 10 mM, and the mixture was heated at 65°C for 10 min. DNA was recovered by ethanol precipitation. The 5' ends of a DNA fragment were labeled with [ $\gamma$ - $^{32}\text{P}$ ]ATP (3,000 Ci/mmol; Radiochemical Centre, Amersham) and T4 polynucleotide kinase (Takara Shuzo, Kyoto) as described (13). Each strand of the labeled fragments was separated essentially as described by Maxam and Gilbert (13) and extracted as described previously (14). Labeling of DNA fragments by nick translation was carried out with [ $\alpha$ - $^{32}\text{P}$ ] dCTP and DNA polymerase I (Bethesda Research Laboratories) as described by Rigby et al. (15).

**Preparation of RNA:** RNA was prepared by the hot phenol procedure from induced or non-induced cells as described (16).

**S1 Nuclease Mapping:** The S1 mapping assays were carried out as described by Aiba et al. (18). The  $^{32}\text{P}$ -labeled probe DNA ( $5 \times 10^4$  cpm) and 20  $\mu\text{g}$  of RNA were denatured, hybridized, and digested with S1 nuclease (Boehringer Mannheim). The products were analyzed by electrophoresis on 5% polyacrylamide gels containing 8 M urea at 40 mA for 14 hr. Radioactive bands were detected by autoradiography. Principles of the experiments are illustrated in Fig. 2. When the initiation or termination site was determined, the samples were co-electrophoresed with the labeled probe DNA

that was chemically cleaved as described by Maxam and Gilbert (13).

**RNA Blot Hybridization:** The RNA blot hybridization was carried out as described by Thomas (18). Glyoxal-denatured RNAs were separated by agarose gel electrophoresis. RNA bands were blotted to nitrocellulose sheets and hybridized with DNA probes labeled by nick translation technique with [ $\alpha$ - $^{32}$ P] dCTP and DNA polymerase I (Bethesda Research Laboratories). Endogeneous 16S- and 23S-ribosomal RNAs in the RNA preparation and brome mosaic virus RNAs (a gift of I. Furusawa) were used as size markers.

**RESULTS**

***lexA* mRNAs Consist of Two Species:** To know whether the *lexD* region is cotranscribed with the *lexA* gene, S1 mapping analysis of the *lexA* transcript was performed. A plasmid pMCR811 carrying the *lexA* gene and *lexD-lacZ* fusion was constructed as shown in Fig. 1A, and the major EcoRI-SalI fragment was subcloned into a runaway-replication vector pMCR780, to produce pMCR821. The 2.8-kb *MluI*-C fragment carrying most

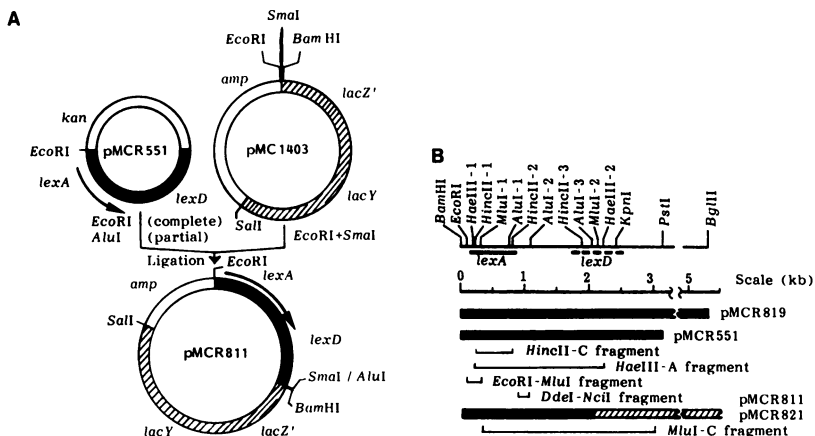


Fig. 1. Restriction Maps of the Plasmids and DNA Fragments Used: Open, hatched, and closed portions represent vector (pBR322 or pACYC177), *lac* operon, and *lexA-lexD* region DNAs, respectively. (A) Construction of pMCR 811. DNA segment between *Eco*RI and *Alu*I-3 sites of pMCR551 was cloned into pMC1403 as described in MATERIALS AND METHODS. Specific activity of  $\beta$ -galactosidase in MC1000(pMCR811) was low (2.1 units per absorbance at 660 nm of the culture) and increased two fold by MTC treatment. Direction of transcription of the *lexA* gene is indicated by arrows. (B) Plasmids and DNA fragments used. Locations of the *lexA* and *lexD* structural genes are shown under the restriction map of the *lexA-lexD* region. Locations of DNA fragments used in this study are shown by \_\_\_\_\_.

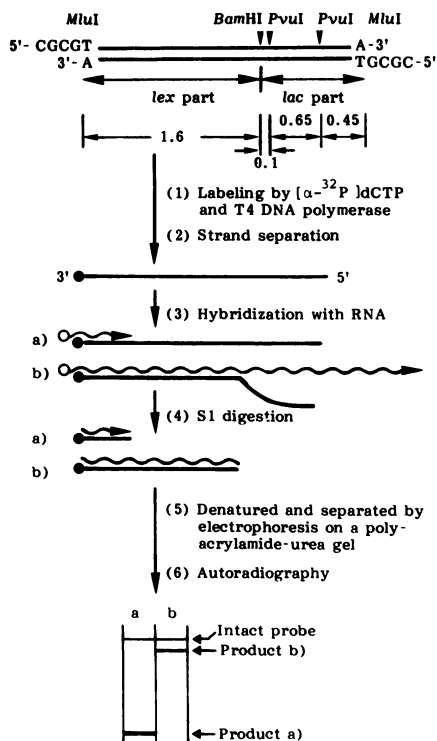


Fig. 2. Experimental Designs to Detect *lexA* mRNAs: The restriction map of the 2.8-kb MluI-C fragment of pMCR821 (see Fig. 1) is shown on the top. The distances between restriction sites are shown in kb. The labeled 3' end of the probe was indicated by a closed circle. RNA was shown as a wavy line with an open circle at its 5' end and an arrow head at its 3' end. a) and b) are the expected DNA/RNA hybrids.

part of the *lexA* gene and the *lexD-lacZ* fusion (Fig. 1B) was isolated from pMCR821. The 3' ends of the fragment were labeled with  $^{32}\text{P}$ . Both the strands were isolated and used as probes. Principles of the experiments are illustrated in Fig. 2. Each probe was hybridized with RNA prepared from MTC-induced or non-induced cells without *lexA*-plasmids, and the DNA-RNA hybrids were digested with nuclease S1 to eliminate single-stranded portions. If the transcription stopped at a site immediately after the *lexA* gene, the product of S1 digestion would be approximately 550-base pairs (bp) long (Fig. 2; product a). On the other hand, if the transcription further proceeded up to the *lexD* region, the product of S1 digestion would be much longer. The RNA, however, should be hybridized only with the *lexA*

part (corresponding to the major MluI-BamHI subfragment) of the sense strand of the MluI-C fragment, because the remaining portion of the probe was derived from the *lacZ* gene. Thus the length of the product of S1 digestion should be approximately 1.6 kb (Fig. 2, product b). The product could be separated by electrophoresis from the probe, which had been protected from S1 digestion by a small amount of the complementary strand contaminating the probe preparation. Results are shown in Fig. 3. By using the slow strand of  $^{32}\text{P}$ -labeled MluI-C fragment as a probe, an expected product of 1.6-kb was detected (lane r, band 2). These results clearly showed that the *lexA* and *lexD* genes were cotranscribed. A shorter product of approximately 550 bases was also found (lane r, band 3). Detection of the two transcripts of the *lexA* gene suggested that the shorter transcript was produced by attenuation of the transcription or by processing of the longer transcript. The band 1 was considered to be the probe protected from S1 digestion by the contaminating complementary strand, because the band was also detected in the assay without RNA (lane p) and had the same mobility as the intact probe (compare lanes d, q, and r). The S1 assays by using the fast strand showed no distinct band (lanes m-o), indicating that this strand was the anti-sense strand. The assay by using the major MluI-PvuI subfragment of 1.7 kb as a probe also showed the longer and shorter transcripts (lanes k and l), although the longer one was mostly hidden by the band of the single-stranded MluI-PvuI subfragment (compare lanes e, k, and l). The lowest band in the lanes k and l was identified to be the double-stranded subfragment by comparing lanes e (the denatured subfragment) and f (the double stranded subfragment) with lanes k and l. Synthesis of both the transcripts was stimulated by MTC treatment of the cells (compare lanes q and r).

*lexA* Transcription Extends to 3-kb Downstream from the Promoter: The S1 mapping data showed that the longer transcript extended, at least, to the AluI-3 site (see Fig. 1B) in the *lexD* region. To estimate sizes of the mRNAs, *lexA* mRNAs were analyzed by blot hybridization. The HincII-C and HaeIII-A fragments shown in Fig. 1B were labeled with [ $\alpha$ - $^{32}\text{P}$ ]dCTP by nick-translation, and used as probes for *lexA* mRNAs. Total cellular RNAs were isolated from MTC-treated or non-treated cells of W3110 and the strain harboring *lexA*-plasmids. The RNAs were separated by agarose gel electrophoresis under denatured conditions, transferred to nitrocellulose sheets, and then hybridized with the probes. Results are shown in Fig. 4. Two RNA species from W3110(pMCR551) were hybridized with the HincII-C

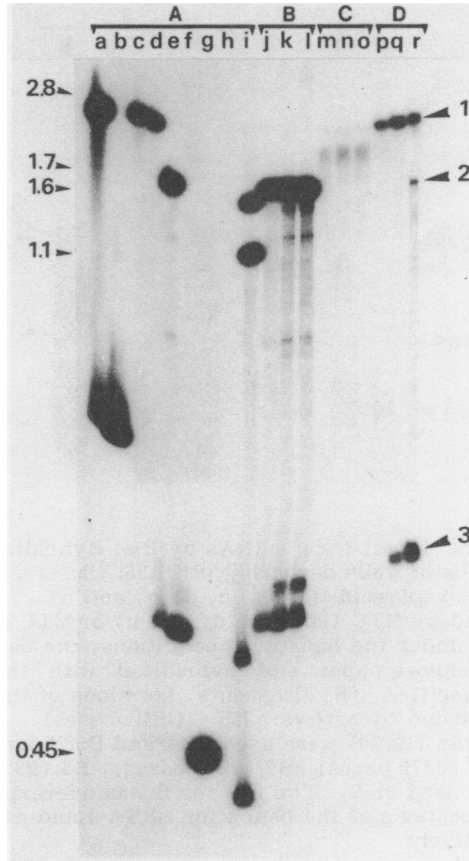


Fig. 3. S1 Mapping Analysis of *lexA* mRNAs: (A) Reference DNAs: a) denatured MluI-C fragment, b) native (double-stranded) MluI-C fragment, c) fast strand (the strand which migrated faster than the other strand in the strand separation gel) of the MluI-C fragment, d) slow strand of the MluI-C fragment, e) denatured major MluI-PvuI subfragment, f) native major MluI-PvuI subfragment, g) denatured minor MluI-PvuI subfragment, h) native minor MluI-PvuI subfragment (The fragment ran off from the gel.), and i) denatured preparation of the BamHI-cleaved MluI-C fragment. The lengths of single stranded markers are shown on the left side of the figure in kilobases. (B-D) S1 mapping analysis of the *lexA* mRNA: The MluI-PvuI major fragment and the fast and slow strands of the MluI-C fragment were used as probes in B, C, and D, respectively. Lanes j, m, and p; without RNA, and lanes k, n, and q; with RNA from non-induced cells, and lanes l, o, and r; with RNA from MTC- induced cells of C600S.

probe which was located within the *lexA* structural gene (Fig. 4A, lanes a and b; indicated by 1 and 2), indicating that these RNAs were the transcripts of the *lexA* gene. Synthesis of both the mRNAs was

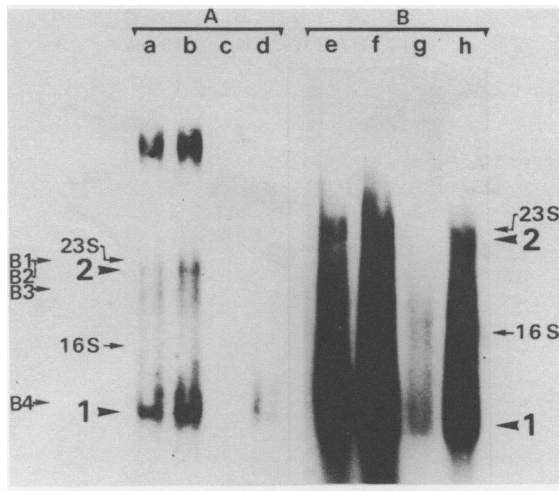


Fig. 4. Detection of Intact *lexA* mRNAs by Blot Hybridization: RNA was extracted from the cells of W3110 harboring pMCR551 (lanes a and b), pMCR819 (lanes e and f), or no plasmid (lanes c, d, g, and h). Before extraction, the cells were induced by MTC (lanes b, d, and h) or MTC and heat (lane f). After electrophoresis under the denatured conditions, the bands were blotted to a sheet of nitrocellulose paper and hybridized with the nick-translated HincII-C (A) and HaeIII-A (B) fragments. Locations of the bands for size marker RNAs are indicated by arrows: 16S- (1541 bases), and 23S- (2904 bases) ribosomal RNAs (19,20) were used in A and B. Four species of bromo mosaic virus RNAs B1 (3270 bases), B2 (2970 bases), B3 (2250 bases), and B4 (840 bases) (21) were used in A. The film for B was overexposed to show the band for mRNA-2. Locations of the bands for mRNA-1 and mRNA-2 are indicated as 1 and 2, respectively.

MTC-inducible (compare lanes a and b). The size of the shorter transcript, mRNA-1, was estimated to be approximately 650 bases and agreed well with calculation from the data of S1 mapping analysis. The longer transcript, mRNA-2, was estimated to be approximately 3,000 bases long, indicating that the transcription terminated near the PstI site which corresponded to an end of the insert of pMCR551. The major band on the top seemed to be formed by hybridization of pMCR551 DNA with the probe, because these bands were not observed when RNAs from the cells without the plasmid were used (see, lanes c and d). In our hands, multicopy plasmids tend to contaminate RNA preparations during the extraction procedure. With RNAs from the plasmid-free cells, mRNA-2 was failed to be detected (lanes c and d). To determine whether transcription for mRNA-2 terminated at a site in the insert of pMCR551 or not, RNA prepared from W3110 harboring pMCR819 which carried the longer insert, the BamHI-BglII fragment (see Fig. 1B),



was used. The HaeIII-A fragment (Fig. 1B) was used as a probe for the hybridization experiment. The sensitivity of detection would increase by using the longer probe. The *lexA* mRNAs could be efficiently amplified by heat treatment of the cells harboring pMCR819, because the vector portion of the plasmid was derived from a runaway replication plasmid. Indeed, higher amounts of both the mRNA species were detected as shown in Fig. 4B (lanes e and f). The size of mRNA-2 was nearly the same as that in the former experiments with RNA from pMCR551-harboring cells. In the results shown in Fig. 4B, both the mRNA species were detected even in RNA from the plasmid-free cells (lanes g and h), indicating that mRNA-2 was also synthesized from the *lex* operon on the chromosome.

Transcription Initiation Site *In Vivo* Is 2-bp Downstream from That *In Vitro*: The initiation site of *in vitro* transcription of the *lexA* gene was previously determined (7,22). To know whether the initiation site *in vivo* is different from that *in vitro*, the *in vivo* site was determined by S1 mapping. The 180-bp EcoRI-MluI fragment containing the *lexA* promoter (Fig. 1B) was labeled at the 5' ends, and the sense strand (identified by sequence analysis) was used as a probe. The probe was hybridized with RNA extracted from DM1187 which was expected to synthesize *lexA* mRNAs at a high level. After S1 digestion, the sample was electrophoresed together with the chemically-cleaved probe DNA. As shown in Fig. 5, the probe protected by mRNA gave an intense band, when 1,000 units of S1 was used under standard conditions (lanes 1 and 3). Several faint bands above the intense band were observed after digestion with 500 units of S1 (lane 2), indicating that this amount of the enzyme was insufficient. No bands shorter than the main band were observed, suggesting that degradation of the RNA did not occur during the experiments. When transcription started at a site further upstream from the EcoRI site, a full length of the probe would be protected by the mRNA. The intensities of the bands for the intact probe in the S1 assays with and without RNA were almost the same (data not shown), indicating that the intact probe had been protected by the contaminating complementary strand from S1 digestion. Thus only slight level of transcription, if any, started at a site further upstream from the *lexA* promoter and extended to the *lexA* gene. The length of the major product of S1 assay was determined by comparison with the fragments obtained by chemical cleavage of the original probe (see lanes T and 3). The 1.5-bp correction, however, is usually applied in making this comparison (23), because the mode of reactions of S1 digestion and chemical

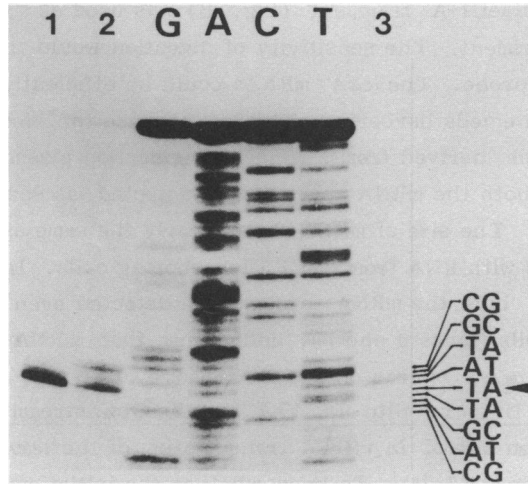


Fig. 5. S1 Mapping Analysis of the Initiation Site for *lexA* Transcription: The sense strand of the 181-bp EcoRI-MluI fragment (Fig. 1) labeled at its 5' ends was hybridized with 20  $\mu$ g of RNA extracted from DM1187 and digested with 1000 units (lanes 1 and 3) or 500 units (lane 2) of S1 nuclease at 37°C for 45 min. A portion of each sample was analyzed by electrophoresis. One tenth of the sample in lane 1 was electrophoresed in lane 3. The probes chemically cleaved by the G, A>G, C, and C+T reactions (13) were electrophoresed in lanes G, A, C, and T, respectively. A part of the sequence determined from the cleavage patterns is shown on the right side with that of the complementary strand. The transcription initiation site is shown by an arrow head.

cleavage are different. With this correction, the initiation site *in vivo* was determined to be 2-bp downstream from that *in vitro* (Fig. 7B). By using RNA from a *recA*<sup>-</sup> strain KT5371, the same result as in Fig. 5 was obtained (data not shown).

*lexA* Transcription Is Attenuated at a Series of T Residues Immediately After a Dyad Symmetry: The results obtained so far indicated that the majority of the transcription from the *lexA* promoter terminated at a site, *t1*, located about 650 bp from the initiation site. A 187-bp DdeI-NciI fragment (Fig. 1B) containing *t1* was labeled with <sup>32</sup>P at the 3' ends and the sense strand (identified by the sequence analysis) was used as a probe to determine the termination site. The probe was hybridized with RNAs prepared from MTC-induced or non-induced cells of C600S and RNA from cells of KT5371 (a *recA*<sup>-</sup> strain). After S1 digestion, samples were electrophoresed with the chemically-cleaved probe DNA. As shown in Fig. 6, lane 3, some bands were seen as the probe protected by mRNAs from S1



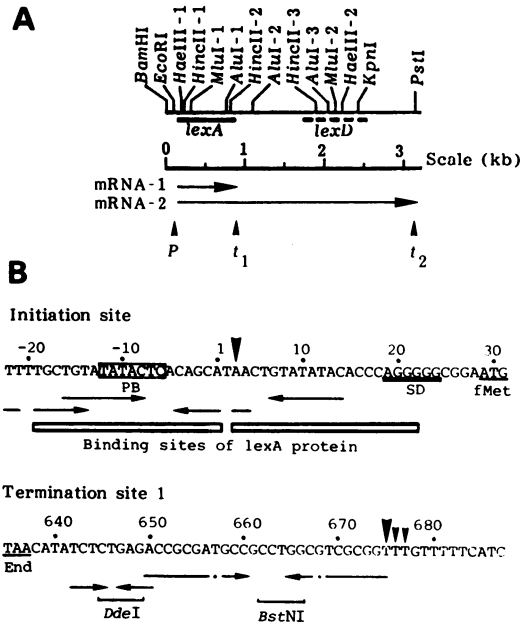


Fig. 7. Initiation and Termination Sites for the *lexA* Transcription: (A) Transcription map of the *lexA* operon. Two species of *lexA* mRNAs are shown under the restriction map of the *lexA*-*lexD* region. The locations of the promoter (P) and terminators (*t*<sub>1</sub> and *t*<sub>2</sub>) are indicated by vertical arrow heads. (B) Transcription initiation site and termination site 1 of the *lexA* operon. Nucleotides are numbered from the site corresponding to 5' end of the transcript synthesized *in vitro* (11, 22). The initiation and termination sites are shown by arrow heads. The minor termination sites are indicated by small arrow heads. Dyad symmetries are shown by arrows. Pribnow box (PB), ribosome-binding site (SD)(11, 22), *lexA*-protein-binding site (3, 4), and relevant restriction sites are shown. The first and stop codons of the *lexA* gene are shown by fMet and End, respectively. The nucleotide sequence of the *t*<sub>1</sub> region determined here agreed with that determined by others except for two positions. Markham et al. (24) and Horii et al. (22) reported lack of A at position 656 and C instead of T at position 677, respectively.

storage (lanes 1 and 2). The predominant termination site was located at the first base on a series of T residues preceded by a dyad symmetry (Fig. 7B). The structure is characteristic of factor-independent terminators (25)

**DISCUSSION**

We previously analyzed the chromosomal region containing the *lexA* gene and suggested the existence of a gene, which we named as *lexD* here, coding for a protein of 35 kd (7). The *lexD* gene was located downstream

from the *lexA* gene by the analysis of the truncated gene product directed by a recombinant plasmid (7). By analysis of *in vivo* mRNAs, we have shown here that the region containing the *lexD* gene is cotranscribed with the *lexA* gene. The initiation and termination sites of the transcription of the *lexA* gene have also been determined (Fig. 7).

The two species of *lexA* mRNAs were detected by RNA blot hybridization (Fig. 4). Because the initiation sites of the mRNAs were the same (Fig. 5), only the termination sites should be different, suggesting the existence of attenuation or processing mechanism. There is a dyad symmetry followed by a series of T residues on which the majority of transcription stopped. The sequence is characteristic of factor-independent terminators or attenuators (25). It has been postulated that RNaseIII can cleave a large stem-and-loop structure in *rpsJL-rpoBC* mRNA, and this processing event regulates the gene expression (26). The dyad symmetry preceded by the *lexA* gene, however, is considered to be too small to be cleaved by RNaseIII. Thus the *lexA* mRNA is thought to be formed by attenuation of transcription rather than by processing of mRNA-2.

The DNA region corresponding to mRNA-2 is long enough (approximately 3 kb) to code for some proteins including the *lexA* and *lexD* gene products. Since transcription of the *lexD* region is very weak in non-induced cells (Fig. 3, lane q), the attenuation mechanism should serve a tight repression of the genes including the *lexD* gene. After MTC- or UV-induction, transcription of the *lexA* gene is stimulated and a fraction of the transcript passes through the "attenuator" to allow the *lexD* protein to be synthesized. Kenyon and Walker (27) identified a damage-inducible locus *dinF* close to the *lexA* gene. According to the results described here, *dinF* insertions could be located at any sites in the *lexD* region. Walker and his coworkers (28) have recently determined the position of one of the *dinF* insertions to be proximal to the KpnI site which is very close to the junction between the *lexD* and *lacZ* portions on pMCR8II (see Fig. 1B). They reported that insertion of Tn5 into the *lexA* gene in the *dinF* insertion strain reduced the  $\beta$ -galactosidase activity, suggesting that the inserted Tn5 stopped transcription of the *dinF-lacZ* fused operon. Their results support our conclusion on cotranscription of the *lexA* and *lexD* genes in genetic criteria. After the position of the *lexA* and its neighboring genes were determined on the physical map (7), we noticed that Lightner et al. (29) cloned the other neighboring genes, *plsB* and *dgk* from pLC44-14 carrying the *lexA* gene. From their and our restriction mapping data, it is clear now that the *plsB* and

*dgk* genes are located counter-clockwise to the *lexA* gene, in contrast to the standard genetic map (30). Thus the gene order is *malB-plsB-dgk-lexA-lexD* (*dinF*)-*dnaB-uvrA*.

#### ACKNOWLEDGMENTS

We are grateful to Dr. M. Casadaban for MC1000 and pMC1403, to Dr. K. Shigesada for KT5371, and to Dr. I. Furusawa for bromo mosaic virus RNAs. This work was supported by grants-in-aid for Scientific Research from Ministry of Education, Science and Culture, Japan.

#### REFERENCES

1. Witkin, E.M. (1976) *Bacteriol. Rev.* 40, 869-907
2. Little, J.W., and Mount, D.W. (1982) *Cell* 29, 11-22
3. Brent, R. and Ptashne, M. (1981) *Proc. Natl. Acad. Sci. USA* 78, 4204-4208
4. Little, J.W., Mount, D.W., and Yanisch-Perron, C.R. (1981) *Proc. Natl. Acad. Sci. USA* 78, 4199-4203
5. Little, J.W. and Harper, J.E. (1979) *Proc. Natl. Acad. Sci. USA* 76, 6147-6151
6. Brent, R. and Ptashne, M. (1980) *Proc. Natl. Acad. Sci. USA* 77, 1932-1936
7. Miki, T., Hiraga, S., Nagata, T., and Yura, T. (1978) *Proc. Natl. Acad. Sci. USA* 75, 5099-5103
8. Mount, D.W. (1977) *Proc. Natl. Acad. Sci. USA* 74, 300-304.
9. Casadaban, M.J., Chou, J., and Cohen, S.N. (1980) *J. Bacteriol.* 143, 971-980
10. Uhlin, B.E., Molin, S., Gustafsson, P., and Nordström, K. (1979) *Gene* 15, 319-329
11. Miki, T., Ebina, Y., Kishi, F., and Nakazawa, A. (1981) *Nucl. Acid Res.* 9, 529-543
12. Platt, T., Muller-Hill, B., and Miller, J.H. (1972) in *Experiments in Molecular Genetics*, Miller, J.H. Ed. pp. 352-355 Cold Spring Harbor Laboratory, New York.
13. Maxam, A.M. and Gilbert, W. (1980) in *Methods in Enzymology*, Grossman, L. and Moldave, K. Eds. pp. 499-560 Academic Press, New York.
14. Miki, T., Kumahara, H., and Nakazawa, A. (1981b) *Mol. Gen. Genet.* 183, 25-31
15. Rigby, P.W.J., Dieckmann, M., Rhodes, C., and Berg, P. (1977) *J. Mol. Biol.* 113, 237-251
16. Ebina, Y. and Nakazawa, A. (1983) *J. Biol. Chem.* 258, 7072-7078
17. Aiba, H., Adhya, S. and de Crombrughe, B. (1981) *J. Biol. Chem.* 256, 11905-11910.
18. Thomas, P.S. (1980). *Proc. Natl. Acad. Sci. USA* 77, 5201-5205.
19. Brosius, J., Palmer, M.L., Kennedy, P.J. and Noller, H.F. (1978) *Proc. Natl. Acad. Sci. USA* 75, 4801-4805
20. Brosius, J., Dull, T.J. and Noller, H.F. (1980) *Proc. Natl. Acad. Sci. USA* 77, 201-204
21. Lane, L.C., and Kaesberg, P. (1971) *Nature New Biol.* 232, 40-43.
22. Horii, T., Ogawa, T., and Ogawa, H. (1981) *Cell* 23, 689-697
23. Sollner-Webb, B. and Reeder, R.H. (1979) *Cell* 18, 485-499.
24. Markham, B.E., Little, J.W., and Mount, D.W. (1981) *Nucleic Acids Res.*

- 9, 4149-4161
25. Greenblatt, J. (1981) *Cell* 24, 8-9.
  26. Barry, G., Squires, C. and Squires, C.L. (1980) *Proc. Natl. Acad. Sci. USA* 77, 3331-3335
  27. Kenyon, C.J. and Walker, G.C. (1980) *Proc. Natl. Acad. Sci. USA* 77, 2819-2823
  28. Krueger, J.H., Elledge, S.J., and Walker, G.C. (1983) *J. Bacteriol.* 153, 1368-1378
  29. Lightner, V.A., Larson, T.J., Tailleux, P., Kantor, G.D., Raetz, C.R.H., Bell, R.M. and Modrich, P. (1980) *J. Biol. Chem.* 255, 9413-9420
  30. Bachmann, B.J. (1983). *Bacteriol. Rev.* 47, 180-230.