

Published in final edited form as:

J Am Chem Soc. 2007 February 14; 129(6): 1680–1689. doi:10.1021/ja067276c.

Screening of 5-HT_{1A} Receptor Antagonists using Molecularly Imprinted Polymers

Naphtali A. O'Connor[†], David A. Paisner[†], Donna Huryn[‡], and Kenneth J. Shea^{*†}

[†]Department of Chemistry, University of California, Irvine, 92717

[‡]Department of Chemistry, University of Pennsylvania, 19104-6323

Abstract

Molecular imprinting produces network polymers with recognition sites for imprint molecules. The high binding affinity and selectivity in conjunction with the polymers' physical robustness positions molecular imprinted polymers (MIPs) as candidates for use as preliminary screens in drug discovery. As such, MIPs can serve as crude mimics of native receptors. In an effort to evaluate the relationship between MIPs and native receptors, imprinted polymers for WAY-100635, an antagonist of the serotonin (5-HT) receptor subtype 5-HT_{1A} were prepared. The resulting MIP **P(WAY)** was evaluated as an affinity matrix in the screening of serotonin receptor antagonists with known affinities for the native receptor. Rough correlations in affinity between the synthetic **P(WAY)** and native receptor 5-HT_{1A} were found. These findings provide some support for the analogy between MIPs and native receptors and their possible use as surrogates.

Introduction

Molecular Imprinting is a general method for preparing synthetic receptors. Molecularly imprinted polymers (MIPs) can have substrate affinities comparable to those of antibodies (Scheme 1)^{1–4} and have been evaluated for a wide variety of applications including chromatographic stationary phases^{5, 6}, solid phase extraction materials⁷, catalysts^{8, 9} and as chemical and biomimetic sensors.^{10–13}

The high binding affinity in conjunction with physical robustness of MIPs also positions them as candidates for use as screens in drug discovery.^{14–21} Indeed it has often been stated that MIPs created from imprint molecules with high affinity for biological receptors may serve as a crude mimic of the native receptor. Implicit in the use of MIP's as a screen for biologically active compounds are parallels in ligand binding between the MIP and the native receptor. Is there justification for this assumption? What evidence is there that the binding site of a MIP made from a high affinity ligand will resemble the native binding site? Protein receptors have domains created by polypeptides. The binding domains are complementary in shape to the substrate and possess an array of strategically positioned functional groups that enter into numerous weak binding interactions of the substrate. Molecular imprinting creates domains in crosslinked network polymers that are complementary in shape to the template molecule. The imprinting process is also believed to position a limited range of complementary functional groups in three-dimensional space that provides for the recognition of analyte molecules.^{22–24} Upon closer examination however the similarities wane. Protein receptors (i.e. antibodies) have been refined through eons of

kjshea@uci.edu.

Supporting Information Available: Complete Ref. 28. Data for binding isotherm of **P(WAY)**, **P(BA)** and **P(BL)**. This material is available free of charge via the Internet at <http://pubs.acs.org>.

evolutionary fine-tuning. They employ a wide assortment of complementary functionality for recognition. Once perfected, biological receptors are easily replicated. MIPs on the other hand have binding sites produced under kinetic control. There is no simple method to correct or refine them. They are fabricated from organic monomers and a limited range of complimentary functional groups so there is no correspondence at the molecular level with native receptors. Furthermore, MIP binding sites are polyclonal.

Although the molecular composition of MIP binding sites may not mimic that of the native protein, they may however respond similarly to variations in ligand structure and thus prove useful for identifying candidates with similar affinities. To evaluate the correspondence between MIPs and native receptors, we describe the synthesis and evaluation of MIPs as an affinity assay for antagonists of the serotonin receptor subtype 5-HT_{1A}. We chose WAY-100635, an antagonist of the serotonin receptor subtype 5-HT_{1A} with nanomolar affinity, as our imprint molecule.²⁵ We then investigated the affinity of the WAY-100635 MIPs (**P(WAY)**) for WAY-100635 and its analogues. The analogues of WAY-100635 have known affinities for the receptor, so comparisons between **P(WAY)** and the native receptor could be made.

Serotonin is a neurotransmitter and with its receptors have been shown to be involved in several neurological and psychiatric diseases (e.g. anxiety, depression, feeding disorders, schizophrenia, Alzheimer's disease and sexual disorders).²⁶ The mechanism of regulation by these receptors remains unclear. WAY-100635 was developed as the first potent, "silent" and selective 5HT_{1A} receptor antagonist.^{25, 26} This compound has an IC₅₀ value of 2.2 nM at the rat hippocampal 5-HT_{1A} receptor and selectivity in binding of over 100-fold relative to binding at other 5-HT receptor subtypes and major neurotransmitter receptor, reuptake and ion channel sites.

The 5-HT receptors are G protein-coupled receptors (GPCRs) consisting of a single polypeptide chain that is integrated into the plasma membrane of cells via seven transmembrane domains. The transmembrane and extracellular portion of the receptor form the ligand recognition domain and the intracellular portion forms the coupling domain that interacts with guanine-nucleotide binding proteins (G-proteins). The design of selective ligands for 5-HT receptors represents a considerable challenge. Far less is known about the structure of membrane bound proteins than soluble proteins, as X-ray crystal structures have proven difficult to obtain.²⁷ Not knowing the structure of the 5-HT receptor makes it difficult to design molecules that target specific protein domains.

5-HT_{1A} receptor mimics present an ideal opportunity for MIPs.¹⁵⁻²¹ The 5-HT_{1A} receptor is an important medicinal target and thus synthetic mimics could prove to be a useful tool. We chose WAY-100635 as the imprint molecule as it is one of the tightest binding with an IC₅₀ of 1.35 nM.²⁸ The molecule is also highly selective with > 100-fold selectivity for the 5-HT_{1A} site relative to a range of other CNS receptors. The implication being that this will produce a MIP that most closely approximates the native receptor. To test this hypothesis we evaluated the MIP **P(WAY)** affinity for a range of WAY-100635 analogues and compared these to the native receptor (5-HT_{1A}).

Zhuang *et al* have shown in a series of benzamido analogues of WAY-100635 that there is a limited tolerance for variations at the amino pyridine position, in the native receptor.²⁹ As the hydrocarbon substituents at the para position becomes more sterically demanding, a decrease in affinity for the native receptors is observed. We set out to investigate if similar size constraints are found with the use of the MIP **P(WAY)** and if any correlation can be drawn between 5-HT_{1A} binding affinities and the MIP **P(WAY)**.

Results and Discussion

Affinity ligand Synthesis

Structural analogues of WAY-100635 (**5–12**) of known nanomolar affinity to 5-HT_{1A} were prepared from piperazinyl **3**.²⁹

MIP synthesis

WAY-100635 (**4**) was used as the imprint molecule for preparation of crosslinked ethylene glycol dimethacrylate (EDGMA) polymers with methacrylic acid (MAA) as the functional monomer (Scheme 3). Solutions of template (1 mol%), MAA (11 mol%), EGDMA (87 mol %), and 2,2-dimethoxy-2-phenyl acetophenone (DMPA) (1 mol%) in chloroform were polymerized photochemically by UV irradiation (a Hanovia medium-pressure 500 W mercury arc lamp) for 24 h at 5 °C to yield polymers imprinted with WAY-100635, **P(WAY)**. Control polymers containing the same molar ratio of monomers but incorporating a “generic” template, benzylamine, **P(BA)**, or without template **P(BL)** were also prepared. The resulting polymers were crushed and subjected to Soxhlet extraction with methanol. The extracts were evaporated to dryness and dissolved in methanol (10 mL). WAY-100635 was recovered in > 89% (i.e. splitting yield) as determined by reverse phase HPLC. Further release of WAY-100635 was not observed in subsequent washings.

Following removal of the template molecule, the polymers were then ground, and sieved to a 38–125 μm particle size for rebinding experiments and 25–38 μm particle size for chromatography experiments. For rebinding experiments, 20 mg of dry polymer was suspended in 1 mL stock solutions of WAY-100635 for 24 h, and their change in concentration obtained using reverse phase HPLC. For chromatography experiments, polymer particles were slurry packed in 10 cm × 0.46 cm i.d. stainless steel chromatography columns for evaluation by HPLC. Approximately 1 g of polymer was required to pack one column. Once packed, the columns were washed with the various eluents of choice until a stable baseline was obtained before analysis.

The resulting polymers have a high degree of chemical and thermal stability. They are mechanically robust and can endure high pressures as HPLC column packing materials without fracturing. Their physical characteristics from N₂ adsorption analysis are given in Table 1. The polymers all have low surface areas in line with N₂ adsorption analysis of previously made imprinted materials with CHCl₃ as porogen.³⁰ This also demonstrates that both imprinted and control materials are of similar nature. It should be noted however that the low surface areas and pore volumes determined in the dry state do not represent the porosities of these polymers in the presence of solvents.

Batch rebinding experiments were performed to evaluate the affinity of WAY-100635 for the imprinted and control polymers. Polymers were suspended in stock solutions of WAY-100635 in CHCl₃ for 24 h and then the concentration of WAY-100635 was measured. The equilibrium concentration of free WAY-100635 is labeled as **F**. The concentration of WAY-100635 bound to polymer is designated **B** and is computed by taking the difference between the total concentration of WAY-100635 (**T**) and **F** ($B = T - F$).

The binding isotherms of WAY-100635 on polymers **P(WAY)**, **P(BL)** and **P(BA)** in CHCl₃ are shown in Figure 2 below. The plots show greater binding to polymer imprinted with WAY-100635, **P(WAY)**, compared with polymer imprinted with benzylamine **P(BA)**. Polymer made without any template, **P(BL)**, exhibits similar affinity for WAY 100635 as polymer imprinted with benzylamine **P(BA)**.

MIP binding parameters can be estimated from the binding isotherm by a Scatchard plot,³¹ a linear display of a binding isotherm where the X-axis represents the concentration of bound analyte and the Y-axis is the ratio of bound to free analyte concentration. The mean association constant (K_a) and number of binding sites (N_t) were calculated from a linear regression of the Scatchard plot from the expression $B/F = K_a N_t - K_a B$, where B is the concentration of bound analyte and F is the concentration of free analyte. The analysis for imprinted polymer **P(WAY)** is displayed in Figure 3 below.

The plot in figure 3 exhibits a bimodal distribution of binding sites with two regions that can be fitted by linear regression. This analysis reveals the MIPs have two sets of sites with differing affinities.³¹ The highest affinity sites represented by a linear regression of the first five points in figure 3, exhibit an estimated mean K_a of 3186 M^{-1} and number of binding sites N_t of $17 \mu\text{mol g}^{-1}$. The lower affinity sites are represented by the latter five points and demonstrate an estimated mean K_a of 318 M^{-1} and number of binding sites N_t of $63 \mu\text{mol g}^{-1}$. Combining the high and low affinity binding sites gives a total of $80 \mu\text{mol g}^{-1}$. The theoretical total binding sites computed from the amount of template WAY-100635 per gram of polymer is $56 \mu\text{mol g}^{-1}$, less than that determined from the Scatchard plot. This is justified by the presence of excess methacrylic acid in the polymer formulation, which will contribute to the formation of low selectivity binding sites.

The binding and selectivity of WAY-100635 and its analogues were also evaluated from their performance in HPLC experiments with MIP and control stationary phases. Analysis was performed by injecting $5 \mu\text{L}$ of 1mM solutions of WAY-100635 and its analogues onto the polymeric supports using a mobile phase of 2 % isopropanol in CHCl_3 at 0.5 mL/min . When less polar eluent was used, peaks were too broad for an accurate determination of retention times. Measurements were done in triplicate. Figure 4 below depicts a chromatogram of analyte WAY-100635 on imprinted polymer **P(WAY)** and control polymer **P(BL)**. Retention times were marked as the points of absorbance maxima. Solutions of WAY-100635 and its analogues were injected onto HPLC columns containing MIP stationary phases imprinted for WAY-100635. Corrected retention volumes (capacity factors, k') were calculated against a void volume marker (acetone).³² Imprinting factors were calculated from the ratios of k' values on imprinted and nonimprinted polymers ($I = k'_{\text{imp}}/k'_{\text{con}}$), where I is the imprinting factor and k'_{imp} and k'_{con} are the capacity factors for analytes on the imprinted polymer **P(WAY)** and the control polymer **P(BL)**, respectively. The imprinting factor can be viewed as a measure of the selectivity for the analytes for the imprinted polymer over the control polymer and thus is a measure of MIP affinity and selectivity.

The template molecule WAY-100635 proved the best retained on the MIP support, all other derivatives have lower affinities for the MIP and neither WAY-100635 or its analogues showed any affinity for the nonimprinted **P(BL)** support (Table 2). Variations of the amide substituent at the *N*-(pyridine-2-yl) position (N2) were observed to elicit changes in the capacity factors. As the benzamido analogues **7**, **8**, **9** and **10** get larger, a drop-off in the imprinting factor of approximately 2 fold is observed. The largest substituent change is found with the 4-heptylphenyl derivative **10**. This compound elicits the lowest imprinting factor of 4.0, while the much smaller 4-propylphenyl derivative **8** has a larger imprinting factor (7.6). Another interesting observation is that in the absence of an amido substituent as in analogue **2**, there is no affinity for the imprinted polymer (imprinting factor of unity).

MIP chromatography columns have been shown to be successful using a variety of eluents, including aqueous mobile phases.^{33, 34} Their ability to operate under a range of conditions allows them to be useful for the analysis of a variety of molecules. Analyte binding to MIPs is a combination of specific and non-specific interactions that can be attenuated by

solvent.^{33, 35, 36} In an aqueous based eluent, non-specific hydrophobic interactions are increased and electrostatic/hydrogen bonding interactions within the MIP binding site are diminished. To study the effect of solvent on binding, a chromatographic analysis was performed in an aqueous based mobile phase. After surveying a variety of conditions, a 7/3: ACN/10mM KH₂PO₄+K₂HPO₄ (aq., pH 5.8) mobile phase at a 1 mL/min flow rate was found to provide the best results (Table 3). **P(WAY)** was shown to have greater affinity for WAY-100635 and its analogues over non-imprinted polymer **P(BL)** with WAY-100635 proving the most retained on the imprinted polymer with an imprinting factor of 2.9. Interestingly, *higher* capacity factors were observed on the imprinted and non-imprinted polymers in the aqueous mobile phase compared to the organic mobile phase. This effect is attributed to the polymer's behavior as a reverse phase support where retention is based on, among other things, dispersive interactions between polymer and analyte.

The imprinting effect was observed to decrease with an increase in volume of the *N*-(pyridine-2-yl) amide substituents. This may be visualized in a plot of the van der Waal's volume of the *N*-(pyridine-2-yl) amide substituents against the imprinting factor (Figure 5a). van der Waal's volumes were calculated using Connolly's molecular surface method to provide the solvent excluded volume which approximates the van der Waal's volume.³⁷ The imprinting factor was found to decrease with an increase in the volume of the substituent. The 4-heptylphenyl group is the largest substituent and produces the lowest imprinting factor (1.9). This result demonstrates the imprinted polymer's ability to discriminate between WAY-100635 analogues is based at least in part on differences in the steric bulk of the *N*-(pyridine-2-yl) amide substituents and in part on non-specific dispersive forces.

In the reverse phase (aqueous) chromatography mode, capacity factors were observed to increase with increasing lipophilicity. Figure 5b reveals a continuous increase of capacity factor with an increase in the calculated octanol-water partition coefficient (logP) of the *N*-(pyridine-2-yl) amide substituent. The largest and most lipophilic 4-heptylphenyl derivative **10** showed the highest capacity factor on both imprinted and non-imprinted polymer. The logP is a measure of the hydrophobicity and hydrophilicity of a substance. The increased affinity for both imprinted and non-imprinted polymers with increasing lipophilicity may be attributed to non-specific dispersive interactions, which come into play in the aqueous mobile system. It is important to note however that the magnitude of this trend for the non-imprinted control polymer **P(BL)** is significantly less.

The preceding chromatographic results are indicative of the contribution of amide substituents at the *N*-(pyridine-2-yl) position for retention on the imprinted polymer **P(WAY)**. Importantly, changes at this position also elicit large variations in the binding affinities for the 5-HT_{1A} receptor. The ability of the imprinted polymer to discriminate between these subtle differences adds credibility to employing imprinted polymers in the screening of libraries of ligands. A point of interest is to discern what other similarities the imprinted polymer **P(WAY)** bears with the native receptor 5-HT_{1A}.

The binding interactions that take place between WAY-100635 and the imprinted polymer and 5-HT_{1A} receptor are due to a combination of intermolecular forces. These include ionic interactions, hydrogen bonds and/or van der Waals forces. Binding affinity is related to the Gibbs free energy of binding ΔG which is composed of an enthalpic and entropic contribution ($\Delta G = -RT \ln K_i = \Delta H - T\Delta S$). The enthalpic contribution is comprised of van der Waals, dipole-dipole, hydrogen bonding and electrostatic interactions between the ligand and protein. The binding of a ligand to an imprinted polymer relies on similar interactions, although they do not share the same *specific* interactions. Nevertheless, since recognition is a composite of attractive interactions based upon the host and guest, there is no fundamental reason why parallels may not be observed.

Affinities are based on structural features of both ligand and receptor. As a consequence, variations in binding affinities can be related to deviations in ligand structure. A comparison between the forces important for ligand binding to the 5-HT_{1A} receptor and imprinted polymer can be used as a measure of how well a mimic of the receptor the imprinted polymer provides. A plot of 5-HT_{1A} receptor binding affinities against the imprinting factors for WAY-100635 and its analogues reveals such a relationship (Figure 6 and Table 4). The figures show a decrease in the imprinting factor in both organic and aqueous based eluents with an increase in the 5-HT_{1A} binding affinity. Sterically demanding analogues such as 4-pentylphenyl **9** and 4-heptylphenyl **10** show low affinities for both the 5-HT_{1A} receptor and imprinted polymer. WAY-100635 and other similar sized derivatives show similar 5-HT_{1A} affinities while having moderate to high affinity for the imprinted polymer. From this we gather that a size constraint exists in both 5-HT_{1A} receptor and imprinted polymer **P(WAY)**. The imprinted polymer is able to discriminate between analogues having a 20-fold difference in affinity. Regardless of any electrostatic similarities with WAY-100635, analogues that are too large for the MIP and 5-HT_{1A} binding sites are poorly retained. From the available data, changes to the amide substituents at the *N*-(pyridine-2-yl) position of WAY-100635 elicits similar binding response from the imprinted polymer **P(WAY)** and the 5-HT_{1A} receptor. This leads us to believe that **P(WAY)** mimics the binding site shape and volume of the 5-HT_{1A} receptor.

A variety of aryl piperazines are known to bind to the 5-HT_{1A} receptor as antagonists and agonists. They share the similar motif of an aryl piperazine and rigid aryl segment separated by a flexible linker. We were interested in examining the imprinted polymer **P(WAY)** for the ability to distinguish aryl piperazines which were not simple analogues of the template WAY-100635 but were also potent binders to the 5-HT_{1A} receptor. Recognition by the imprinted polymer for such analogues would demonstrate homology between 5-HT_{1A} antagonists and its ability to recognize less obvious similarities between WAY-100635 and its analogues, parallel to the 5-HT_{1A} receptor. For this study we obtained the imprinting factors (chromatographic analysis on **P(WAY)** and **P(BL)** with a 2% isopropanol in CHCl₃ mobile phase) of Spiperone, Buspirone and NAN-190 (Figure 7). Spiperone and NAN-190 antagonists and Buspirone is an agonist of the 5-HT_{1A} receptor.

NAN-190 is the most similar to WAY-100635, sharing a common methoxy phenyl piperazine motif and antagonist behavior. NAN-190 is also the most potent, displaying high 5-HT_{1A} affinity ($K_i = 0.6$ nM).³⁸ A chromatographic analysis of these 5-HT_{1A} aryl piperazines on imprinted and control polymer supports show that the imprinted polymer is able to recognize aryl piperazines that are not simple analogues of the template (Table 5), with NAN-190 having the highest affinity with an imprinting factor of 3.4. Buspirone proved the least retained by the imprinted polymer, with an imprinting factor of 1.7. Their affinities for the imprinted polymer however are not as high as those of the WAY-100635 analogues.

The data indicates a relationship between the 5-HT_{1A} dissociation constants of the piperazine analogues and their imprinting factors. The most strongly retained NAN-190 is also the strongest 5-HT_{1A} antagonist, with an inhibition constant of 0.6 nM. Spiperone has a larger imprinting factor (2.8) than buspirone (1.7). This does not correlate with the inhibition constants, as Buspirone shows greater affinity for the 5-HT_{1A} receptor at 14 nM than Spiperone, which has an inhibition constant of 101 nM. Buspirone however is an agonist. Agonist and antagonist character is dependent on differences in the binding interactions with the receptor. The MIP, which is imprinted for an antagonist may have enhanced interactions with antagonists over agonists. This offers additional support for the position that imprinted polymers function as surrogates for native receptors.

Molecular Modeling Studies

Molecular modeling has been successfully employed to study the interaction between functional monomers and imprinting molecules.^{40–42} Although MIPs are comprised a collection of heterogeneous binding sites differing in affinity,⁴³ molecular modeling can be used to study possible arrangements of complementary functionality that contribute importantly to the high fidelity sites. Functional monomers can be ligated to template/analogue molecules at possible contact points and their geometry optimized. This can provide insight into the possible binding interactions within the MIP cavity and aid the analysis of binding data. This methodology was applied to the template WAY-100635 in an effort to identify possible MIP binding site interactions. This model is limited to the hydrogen bonding interaction between analyte and the functional monomer (MAA) and does not take into consideration the effect the volume of the MIP binding site has on affinity. The model was used to analyze the binding of 5-HT_{1A} antagonists NAN-190, Buspirone and Spiperone which are similar in volume to WAY-100635. They all share the common feature of a piperazine nitrogen which is believed to be integral for binding. However, other structural similarities are not as easily distinguished.

An ionic interaction between an aspartate residue of the 5-HT_{1A} receptor and the protonated piperazinyll nitrogen (N3) of antagonists has been considered crucial and via a long range coulombic intermolecular interaction has been proposed as the first step in the binding site recognition process.⁴⁴ This interaction is presumed to be followed by the formation of a charge reinforced hydrogen bond. Analogously, interaction between the piperazinyll nitrogen (N3) and methacrylic acid in the prepolymer is presumed to result in a hydrogen bond between the imprinted polymer **P(WAY)** and WAY-100635.

The electrostatic potential for WAY-100635 was calculated in an effort to establish the strongest points of contact with the MIP **P(WAY)** binding site carboxylates. This was done using a semi-empirical PM3 method from the Spartan 2002 software package.^{45, 46} The molecular electrostatic potential is the potential energy of a proton at a particular location near a molecule. It represents the attraction between the molecule and a proton. The electrostatic potential is useful in rationalizing the interactions between molecules and molecular recognition processes because electrostatic forces are primarily responsible for long-range interactions between molecules. A map of the electrostatic potential onto the molecular surface of WAY-100635 is shown in Figure 8. Regions attracted to a proton are signified by blue, and areas that repel a proton are red. Attractive forces between WAY-100635 and methacrylic acid in the MIP will occur at the regions colored in blue. These comprise regions around the nitrogen and oxygen heteroatoms and the methoxy phenyl ring.

Models were built ligating three methacrylic acid molecules to WAY-10635 using the Spartan 2002 software package. Methacrylic acid was first hydrogen bonded to the piperazine nitrogen (N3) and the *N*-(pyridine-2-yl) amide oxygen (O1). The third methacrylic acid was hydrogen bonded to either the pyridinyl nitrogen (N1) as in Figure 9a or the phenyl methoxy oxygen (O2) as illustrated in Figure 9b. Their geometries were then optimized with the PM3 semi-empirical method and are illustrated in Figure 13 below. From this we gathered that the complex where the third methacrylic acid was hydrogen bonded to the methoxyl phenyl oxygen (O2) was more favored, with a calculated heat of formation of -296.18 kcal/mol compared to the -292.47 kcal/mol that was obtained for the pyridinyl nitrogen (N1) hydrogen bonded structure. It is proposed that an idealized MIP binding site could include three methacrylic acid hydrogen bonding contacts to the piperazinyll nitrogen (N3), *N*-(pyridine-2-yl) amide oxygen (O1) and the methoxy phenyl oxygen (O2).

The methacrylic acid molecules in Figure 9b were fixed into position to mimic the WAY-100635 MIP binding site. The WAY-100635 molecule was deleted and 5-HT_{1A} antagonists NAN-190, Spiperone and agonist Buspirone inserted into the model. When inserted, all models had the piperazinyll nitrogen hydrogen bonded to a methacrylic acid molecule. All molecules were oriented in the binding cavity in a similar manner with the aryl piperazine in the same region as WAY-100635 in Figure 9b. With the methacrylic molecules in fixed positions, the geometries were then optimized using the PM3 semi-empirical method, the result of which can be found in Figure 10 below.

All 5-HT_{1A} antagonists are able to establish multiple contacts with methacrylic acid functional monomers in the proposed WAY-100635 MIP cavity. Each has electronegative atoms in close proximity to acidic hydrogen of methacrylic acid. Most notable are NAN-190 and Spiperone which show contact with all three methacrylic acids. In addition to the piperazine nitrogen, NAN-190 exhibits hydrogen bonding with the phthalimide oxygen and methoxy phenyl oxygen (Figure 10a). Spiperone is observed having hydrogen bonds with the methacrylic acids of the WAY-100635 MIP cavity at its piperazine nitrogen, aryl ketone oxygen and cyclic amide oxygen. Interestingly, in the optimized structure the agonist Buspirone could have only two hydrogen bonds with the methacrylic acids of the proposed WAY-100635 MIP cavity, one at the piperazine nitrogen and the other at imide oxygen.

It is interesting to note that both NAN-190 and Spiperone, which were observed to be capable of three hydrogen bonds in the proposed WAY-100635 MIP cavity, show greater retention on the MIP chromatography column **P(WAY)** than Buspirone (Table 5). It is possible that the increased imprinting factors on MIP **P(WAY)** for NAN-190 and Spiperone compared to Buspirone may be due to the additional ability to enjoy hydrogen bonding at the aryl portion of the molecule.

Similarities between the proposed MIP binding model and 5-HT_{1a} receptor binding site are apparent. In recent homology modeling of the 5-HT_{1a} receptor in addition to ionic interaction between the carboxylic acid side chain of Asp3.32 and the nitrogen of the piperazine moiety, other essential interactions were hydrogen bonding between hydrogen bond acceptors of the ligand with Ser5.42 and Asn7.39.⁴⁷ Inspection of the 5-HT_{1a} receptor binding to NAN-190 (Figure 11) shows similarities with NAN-190 bound to our proposed MIP binding model (Figure 10a). Both binding models show interactions with the imide carbonyl, piperazine nitrogen and phenyl methoxy oxygen atoms of NAN-190.

Summary

In summary we have developed a synthetic MIP receptor for the recognition of WAY-100635 and its analogues. The binding sites are heterogeneous in nature, as expected for a noncovalent imprinted polymer. A Scatchard analysis shows selective binding sites with a mean association constant of 3186 M⁻¹ and non-selective binding sites with a mean association constant of 318 M⁻¹ in chloroform. In analogy with the native receptor there is a steric constraint on the analogues within the imprinting cavity, and as *N*-(pyridine-2-yl) amide substituents became larger a drop-off in affinity for the imprinted polymer was observed. We have also shown that imprinted polymer shows affinity for aryl piperazines which are not direct analogues of the imprinting template. A relationship was observed to exist between the 5-HT_{1A} receptor and MIP affinities, with both showing limited tolerance for variations at the amino pyridine position in a series of benzamido analogues of WAY-100635. These results support the viability of imprinting polymers as surrogates for native receptors in drug discovery.

Experimental Section

General Procedures

Compounds **1–12** were prepared in a similar manner documented procedures.^{29, 48} High pressure liquid chromatography (HPLC) experiments were performed on a HP 1100 dual solvent delivery system. Molecular modeling was done using the Spartan 2002 software package.

General Procedure for Molecularly Imprinted Polymer Synthesis

A solution of ethylene glycol dimethacrylate (6.78 g, 34.21 mmol), methacrylic acid (0.41 g, 4.77 mmol), and dimethoxy-2-phenyl acetophenone (0.103 g, 0.4 mmol) in chloroform (9.3 mL) was deoxygenated using nitrogen gas for 5 min. Additional deoxygenated solvent was added to bring the volume of the solution to its initial level. The appropriate template (0.4 mmol) was added and solution further deoxygenated. The polymerizations were initiated photochemically by a mercury arc UV light source at 5 ± 2 °C and allowed to proceed for 24 h under constant irradiation. After crushing, the polymers were extracted with methanol for 24 h, then dried under vacuum. The polymers were further crushed using a mortar and pestle and sieved to isolate 38 – 125 μm particles for use in batch rebinding studies.

General Procedure for Batch Rebinding Experiments with Molecularly Imprinted Polymers

A stock solution of 5 mM WAY-100635 in solvent was prepared. This solution was diluted with solvent 0.1, 0.2, 0.4, 0.6, 0.8, 1, 1.4, 1.8, and 2 mM solutions. One mL of each WAY-100635 solution was then added to 2.0 mL screwcap HPLC vials containing either no polymer or 20 mg of polymer P(WAY), P(BA) or P(BL) (38–125 μm size range). The vials were then shaken for 24 hours and the unbound WAY-100635 concentrations quantified using HPLC analysis. This concentration is labeled as F and the concentration of bound WAY-100635 to polymer is designated B and is computed by taking the difference between the total concentration of WAY-100635 (T) and F (i.e. $B = T - F$).

General Procedure for Chromatographic Experiments

Polymer particles (25–38 μm) were slurry packed into stainless steel columns (length: 100 mm, internal diameter: 4.6mm). Once packed, the columns were washed using an eluent of 70/30 ACN/H₂O until a stable baseline was observed. Chromatographic experiments were then performed using these columns with the Agilent 1100 system.

Supplementary Material

Refer to Web version on PubMed Central for supplementary material.

Acknowledgments

We are grateful to Wyeth Pharmaceuticals, the NIH and University of California, Irvine for financial support.

References

1. Yan, M.; Ramstrom, O., editors. *Molecularly Imprinted Materials: Science and Technology*. New York: Marcel Dekker; 2005. p. 734
2. Komiyama, M.; Takeuchi, T.; Mukawa, T.; Asanuma, H. *Molecular Imprinting: From Fundamentals to Applications*. Weinheim: Wiley-VCH; 2003. p. 147
3. Shea KJ. *Trends Polym. Sci.* 1994; 2:166–173.
4. Alexander C, Andersson HS, Andersson LI, Ansell RJ, Kirsch N, Nicholls IA, O'Mahony J, Whitcombe MJ. *J. Mol. Recognit.* 2006; 19:106–180. [PubMed: 16395662]

5. Kempe M, Mosbach K. *J. Chromatogr. A.* 1995; 694:3–13.
6. Mayes AG, Mosbach K. *Trends Anal. Chem.* 1997; 16:321–332.
7. Andersson LI. *Bioseparation.* 2002; 10:353–364. [PubMed: 12549879]
8. Ramstrom O, Mosbach K. *Curr. Opin. Chem. Biol.* 1999; 3:759–764. [PubMed: 10600723]
9. Wulff G. *Chem. Rev.* 2002; 102:1–27. [PubMed: 11782127]
10. Ansell RJ, Kriz D, Mosbach K. *Curr. Opin. Biotechnol.* 1996; 7:89–94. [PubMed: 8791315]
11. Haupt K, Mosbach K. *Trends Biotechnol.* 1998; 16:468–475. [PubMed: 9830155]
12. Haupt K, Mosbach K. *Chem. Rev.* 2000; 100:2495–2504. [PubMed: 11749293]
13. Kriz D, Ramstrom O, Mosbach K. *Anal. Chem.* 1997; 69:345A–349A.
14. Deng Q, Lun Z, Shao H, Yan C, Gao R. *Anal. Bioanal. Chem.* 2005; 382:51–58. [PubMed: 15900451]
15. Ye L, Haupt K. *Anal. Bioanal. Chem.* 2004; 378:1887–1897. [PubMed: 15064898]
16. Bouman MAE, Allender CJ, Brain KR, Heard CM. *Methodological Surveys in Bioanalysis of Drugs.* 1998; 25:37–43.
17. Ramstrom O, Ye L, Mosbach K. *Anal. Commun.* 1998; 35:9–11.
18. Khasawneh MA, Vallano PT, Remcho VT. *J. Chromatogr. A.* 2001; 922:87–97. [PubMed: 11486894]
19. Vallano PT, Remcho VT. *J. Chromatogr. A.* 2000; 888:23–34. [PubMed: 10949469]
20. Xu X, Zhu L, Chen L. *J. Chromatogr. B.* 2004; 804:61–69.
21. Ye L, Yu Y, Mosbach K. *Analyst.* 2001; 126:760–765. [PubMed: 11445933]
22. Becker JJ, Gagne MR. *Acc. Chem. Res.* 2004; 37:798–804. [PubMed: 15491126]
23. Conrad, PGI.; Shea, KJ. *Molecular Imprinted Materials: Science and Technology.* Mingdi, Y.; Ramstrom, O., editors. New York: Marcel Dekker; 2005. p. 123-180.
24. Shea KJ, Sasaki DY. *J. Am. Chem. Soc.* 1989; 111:3442–3444.
25. Forster EA, Cliffe IA, Bill DJ, Dover GM, Jones D, Y R, Fletcher A. *Eur. J. Pharmacol.* 1995; 281:81–88. [PubMed: 8566121]
26. Cliffe IA, Fletcher A. *Current Drugs: Serotonin.* 1993; 1:99–124.
27. Eisenberg D. *Annu. Rev.* 1984; 53:593–623.
28. Fletcher A, et al. *Behav. Brain Res.* 1996; 73:337–353. [PubMed: 8788530]
29. Zhuang Z, Kung M, Chumpradit S, Mu M, Kung HF. *J. Med. Chem.* 1994; 37:4572–4575. [PubMed: 7799409]
30. Sellergren B, Shea KJ. *J. Chromatogr.* 1993; 635:31–49.
31. Shea KJ, Spivak D, Sellergren B. *J. Am. Chem. Soc.* 1993; 115:3368–3369.
32. The capacity factor (k') is defined as $k' = [(V(t) - V(0))/V(0)]$, where $V(t)$ is the retention volume and $V(0)$ is the dead volume or the retention volume of a nonbinding substrate.
33. Spivak D, Gilmore MA, Shea KJ. *J. Am. Chem. Soc.* 1997; 119:4388–4393.
34. Baggiani, C. *Molecularly Imprinted Materials.* Mingdi, Y.; Ramstrom, O., editors. New York: Marcel Dekker; 2005. p. 517-552.
35. Kim H, Guiochon G. *Anal. Chem.* 2005; 77:2496–2504. [PubMed: 15828786]
36. Sellergren B. *J. Chromatogr. A.* 2001; 906:227–252. [PubMed: 11215890]
37. Connolly ML. *J. Am. Chem. Soc.* 1985; 107:1118–1124.
38. Raghupathi RK, Rydelek-Fitzgerald L, Teitler M, Glennon RA. *J. Med. Chem.* 1991; 34:2633–2638. [PubMed: 1652026]
39. Titeler M, Lyon RA, Davis KH, Glennon RA. *Biochem. Pharmacol.* 1987; 36:3265–3271. [PubMed: 3663239]
40. Wu L, Li Y. *J. Mol. Recognit.* 2004; 17:567–574. [PubMed: 15386620]
41. Wu L, Sun B, Li Y, Chang W. *Analyst.* 2003; 128:944–949.
42. Takeuchi T, Dobashi A, Kimura K. *Anal. Chem.* 2000; 72:2418–2422. [PubMed: 10857615]
43. Umpleby RJ II, Bode M, Shimizu KD. *Analyst.* 2000; 125:1261–1265.

44. Strader CD, Sigal IS, Candelrone MR, Rands E, Hill WS, Dixon RA. *J. Biol. Chem.* 1988; 263:10267–10271. [PubMed: 2899076]
45. Stewart JJP. *J. Comput. Chem.* 1989; 10:209–220.
46. Stewart JJP. *J. Comput. Chem.* 1989; 10:221–264.
47. Nowak M, Kolaczowski M, Pawlowski M, Bojarski AJ. *J. Med. Chem.* 2006; 49:205–214. [PubMed: 16392805]
48. Zhuang Z, Kung M, Kung HF. *J. Med. Chem.* 1994; 37:1406–1407. [PubMed: 8182697]

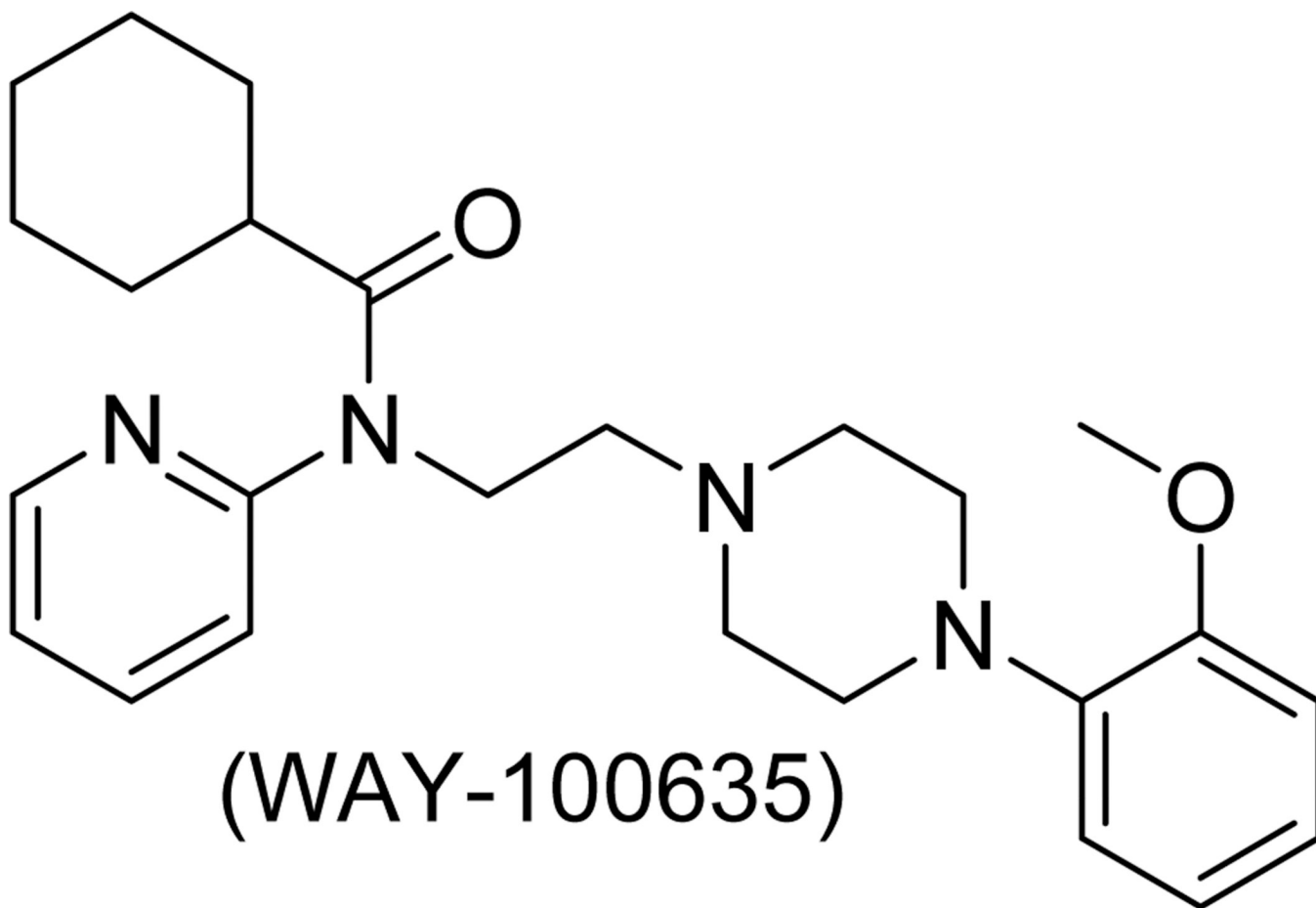


Figure 1.
5-HT_{1A} selective antagonist WAY-100635

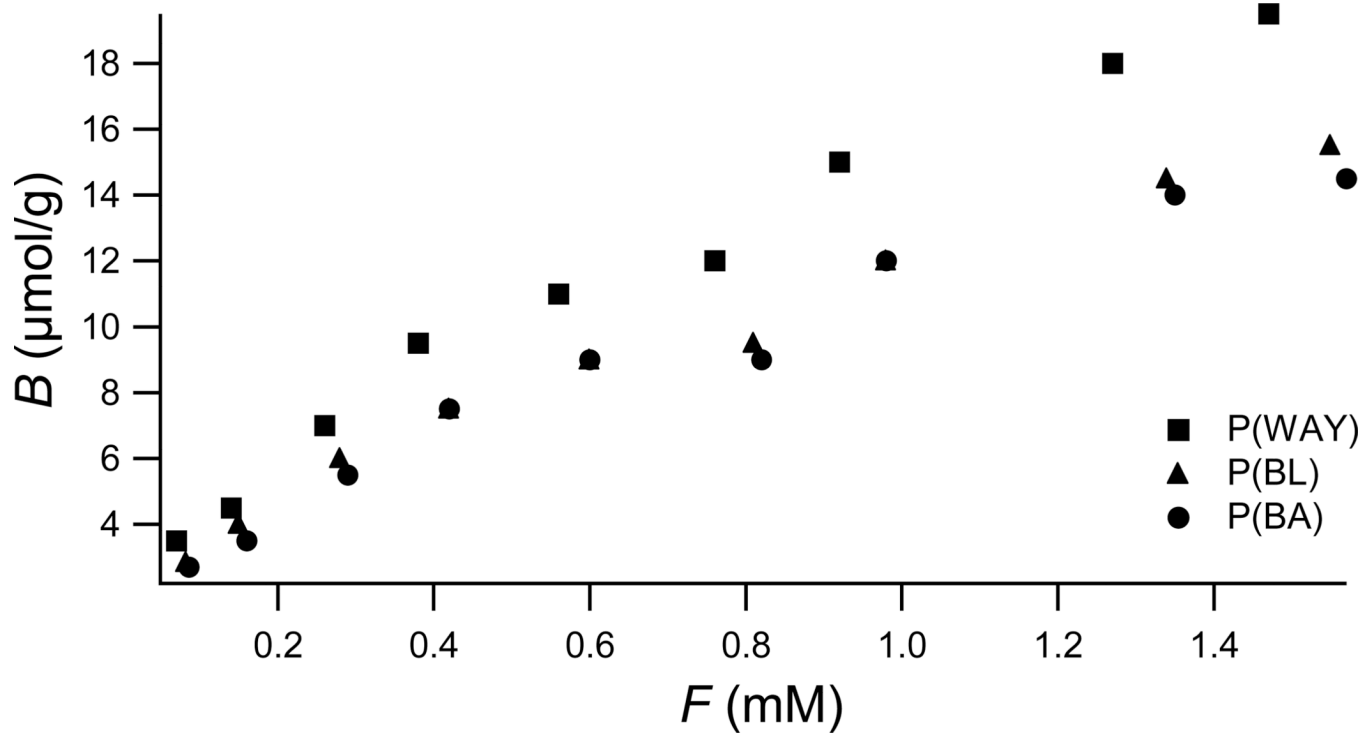


Figure 2.
Binding Isotherm of P(WAY), P(BA) and P(BL).

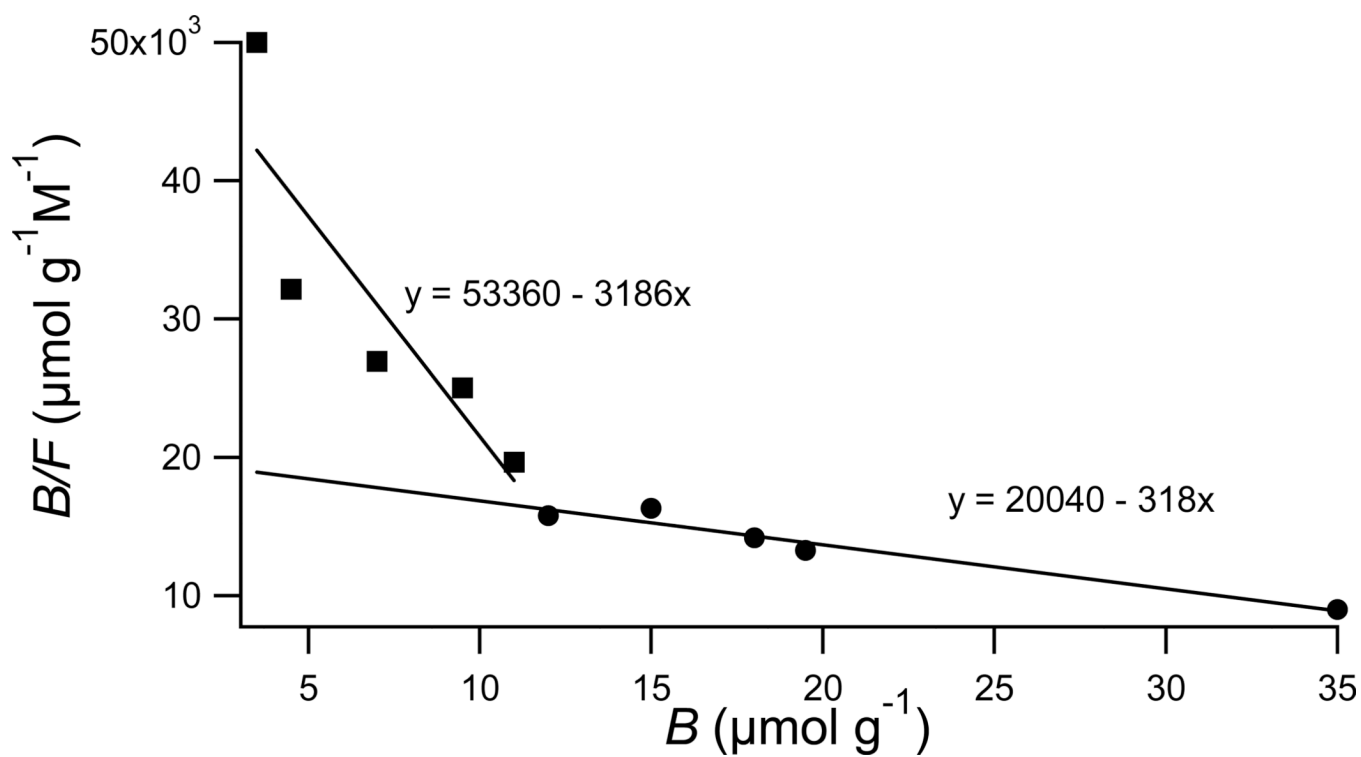


Figure 3.
Scatchard plot for WAY-100635 on P(WAY).

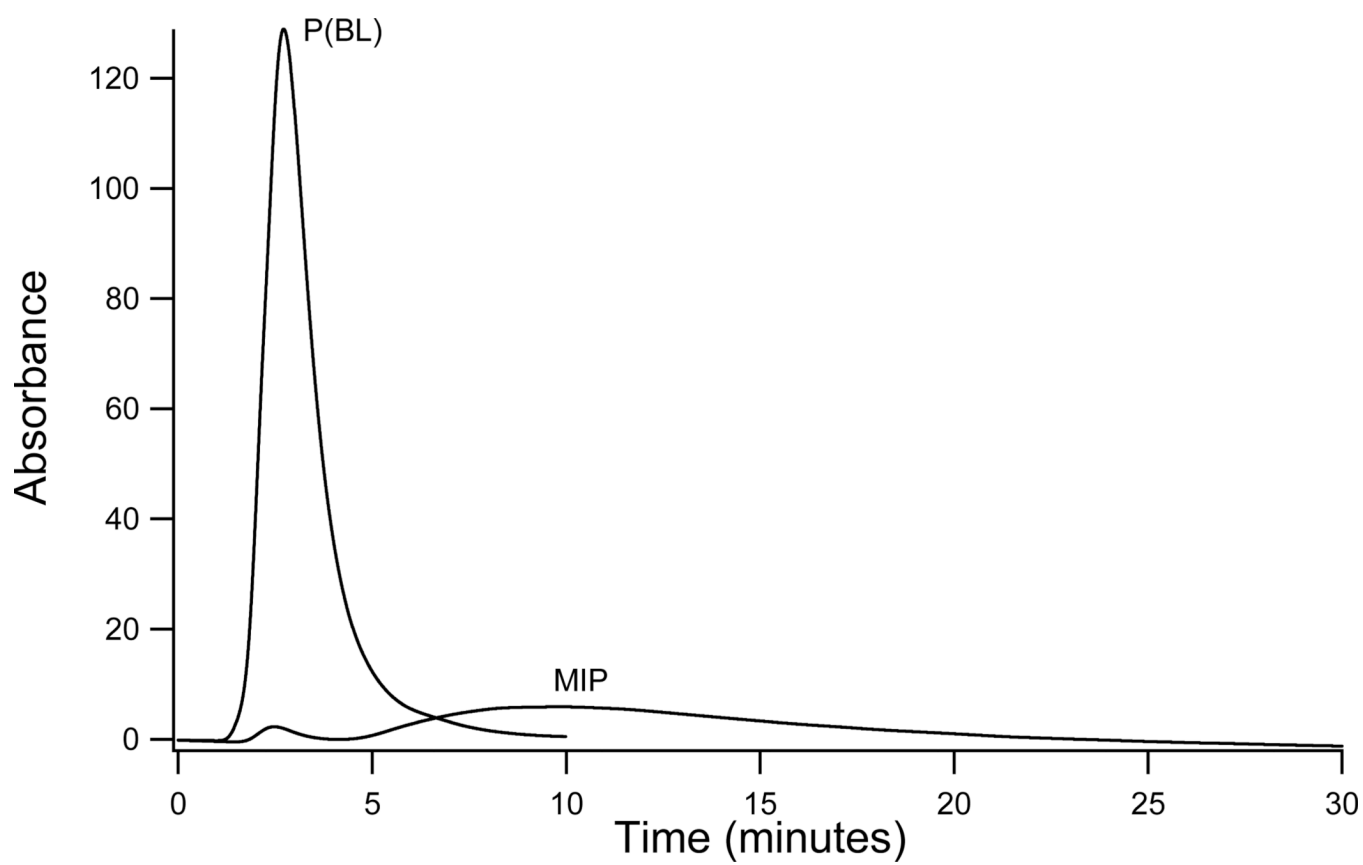
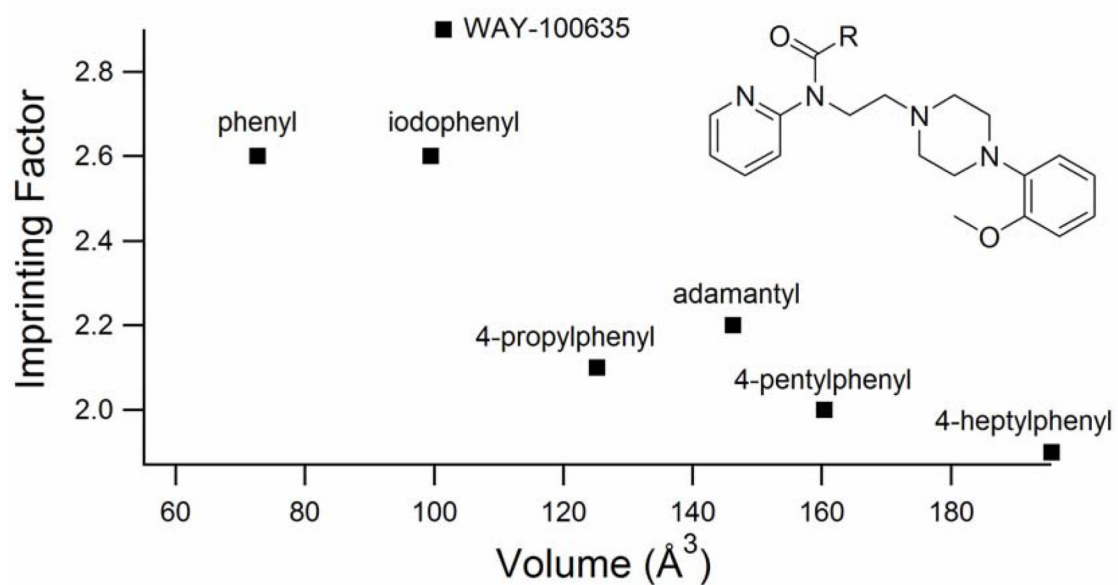
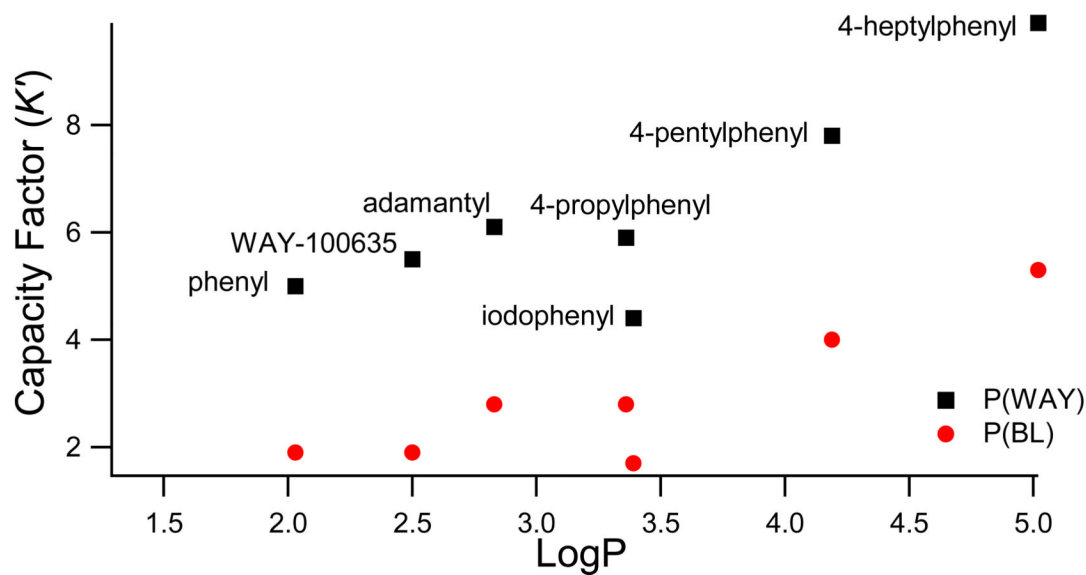


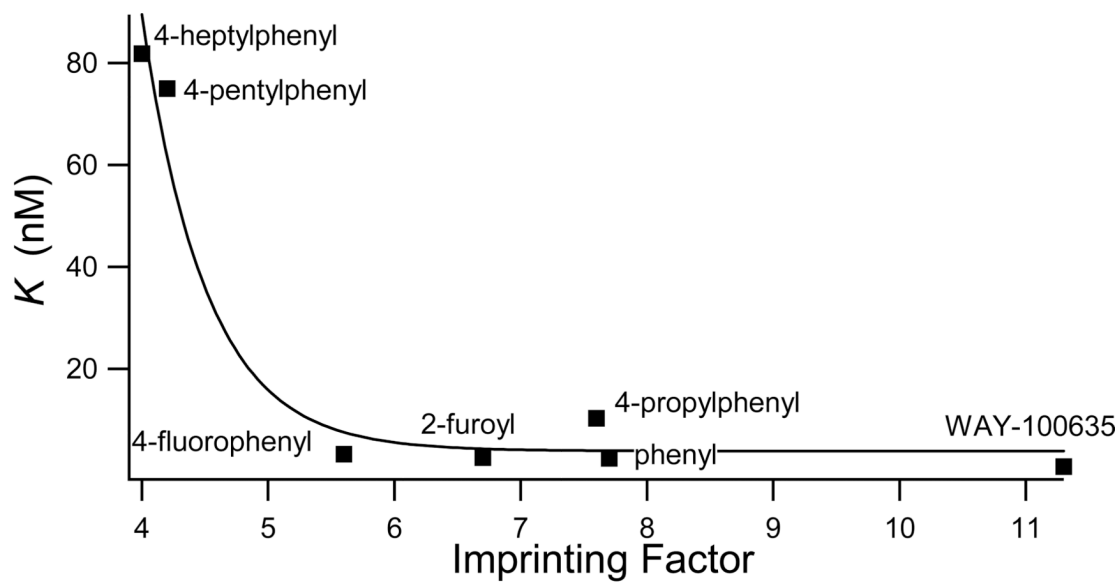
Figure 4. Chromatogram of WAY-100635 on MIP P(WAY) and control P(BL) at a flow rate of 0.5 mL/min in 2% isopropanol in CHCl_3 .



b)

**Figure 5.**

a) Effect of van der Waal's volume of the *N*-(pyridine-2-yl) amide substituent on the imprinting factors from an aqueous eluent (1 mL/min. in 7/3: ACN/10mM $\text{KH}_2\text{PO}_4 + \text{K}_2\text{HPO}_4$ (aq., pH 5.8)). b) Effect of the lipophilicity ($\log P$) on the capacity factors from an aqueous eluent.



b)

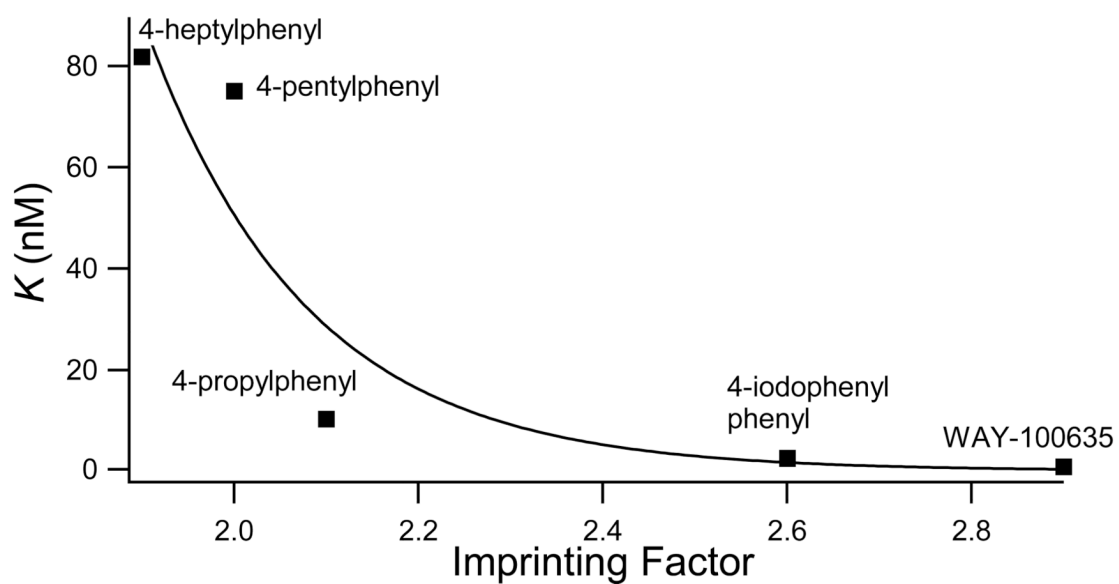


Figure 6. Relationship between 5-HT_{1A} binding affinity and imprinting factors: a) 1 mL/min. in 7/3: ACN/10mM KH₂PO₄+K₂HPO₄ (aq., pH 5.8). b) 0.5 mL/min. in 2% isopropanol in CHCl₃.

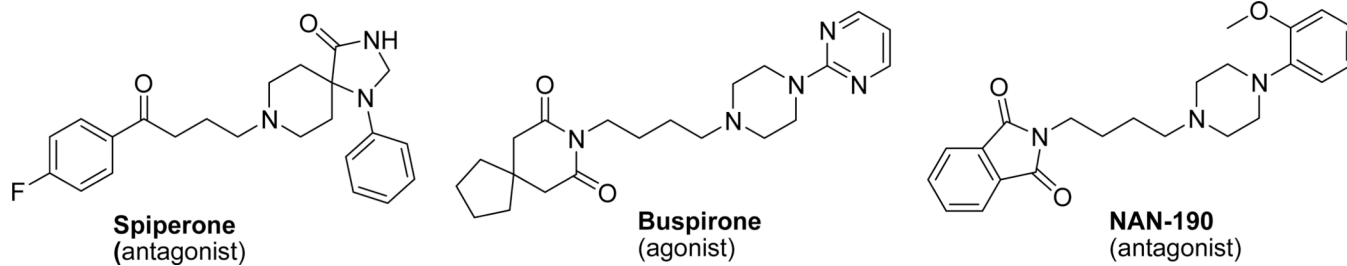


Figure 7.
5-HT_{1A} receptor high affinity agonist and antagonists.

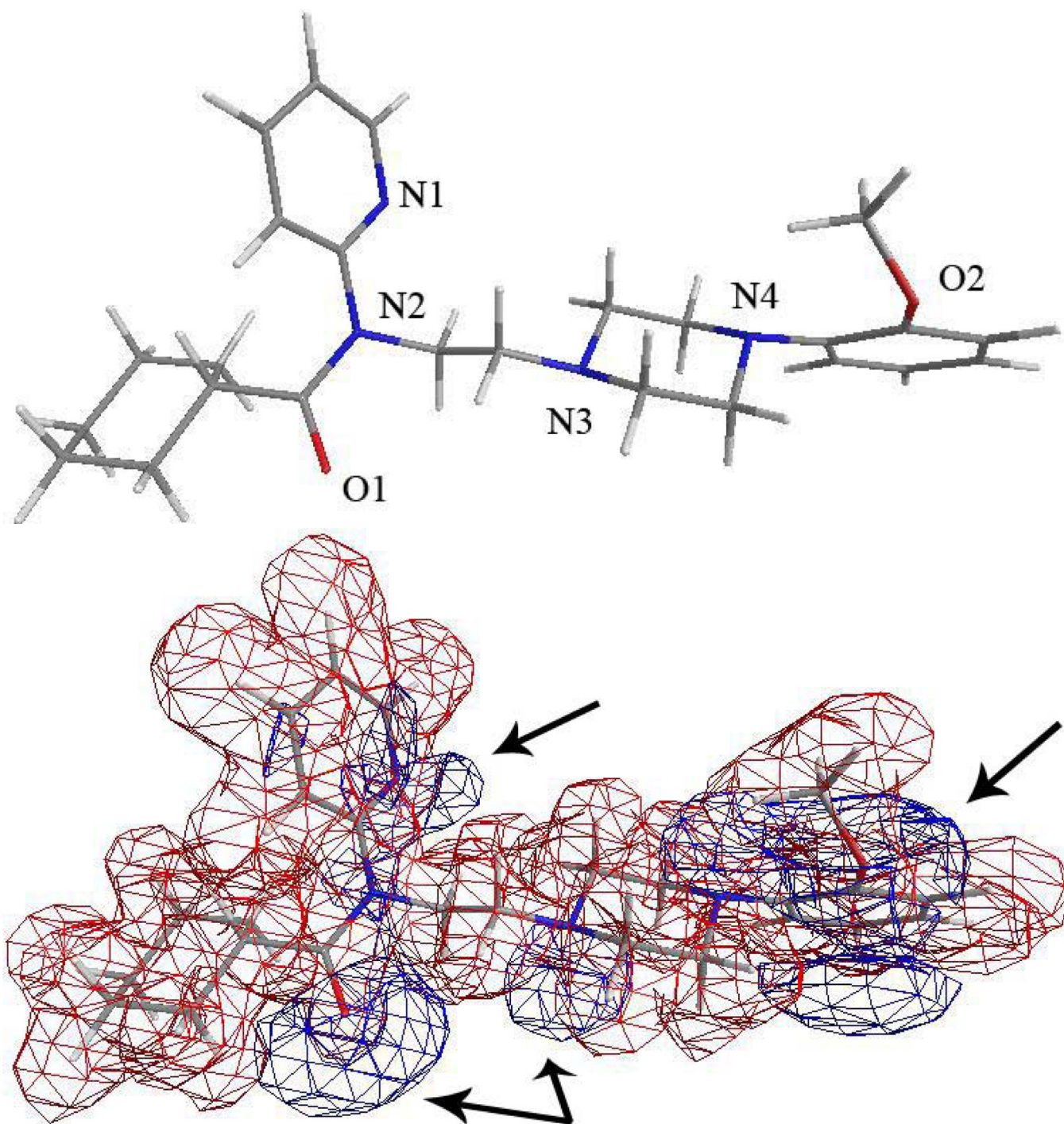
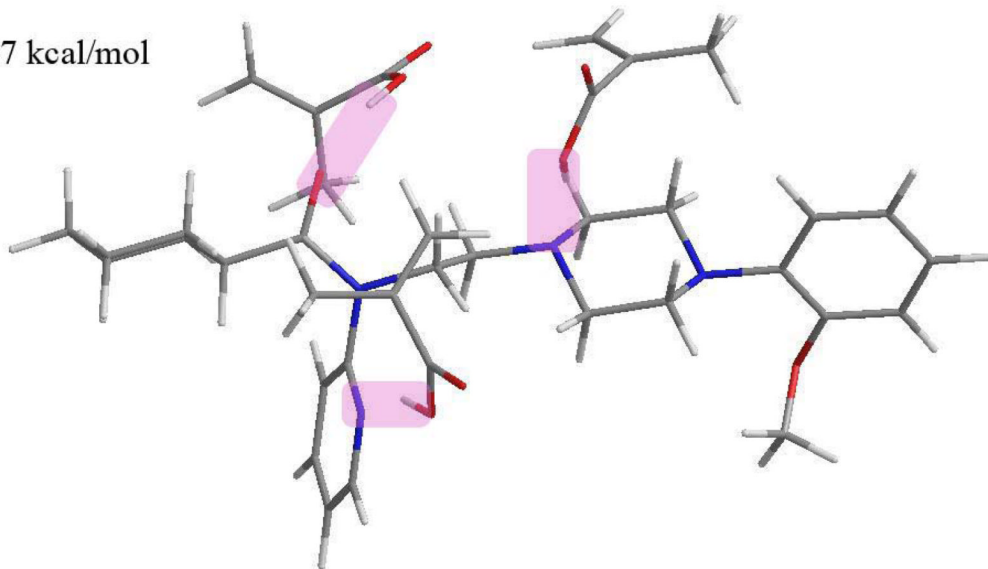
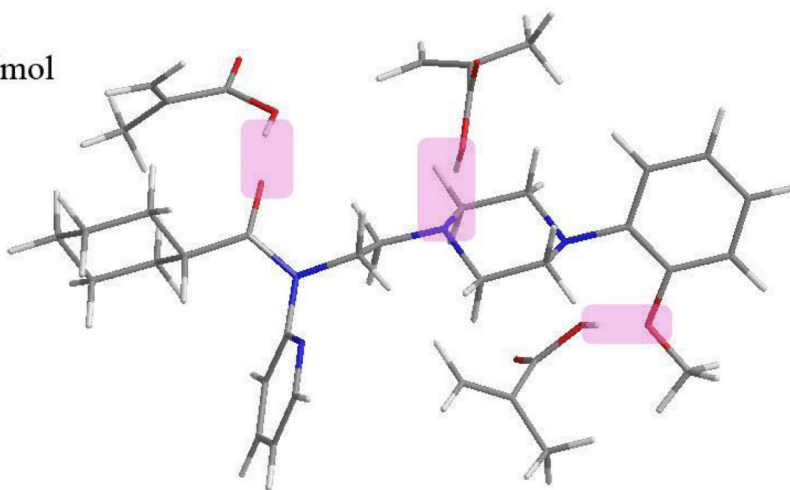


Figure 8. Molecular models of WAY-100635 with electrostatic potential mapping. Attraction for positive charge is represented by blue and repulsion is represented by red.

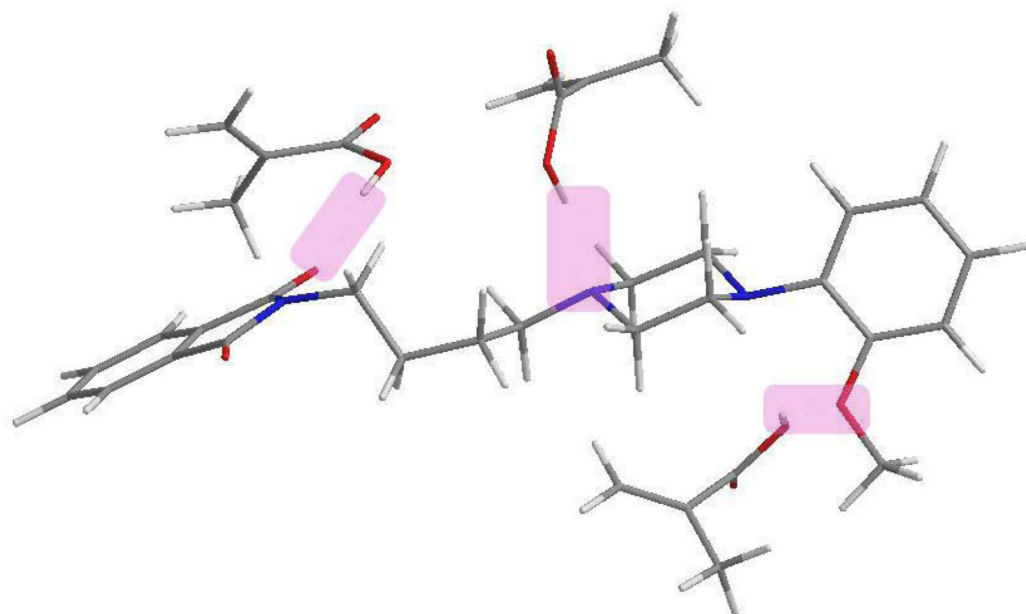
a)

 $E = -292.47$ kcal/mol $E = -296.18$ kcal/mol

b)

Figure 9.
Molecular model of 3 methacrylic acid molecules bound to WAY-100635 heteroatoms: a) N1, N3 and O1; b) N3, O1, O2

a)



b)

c)

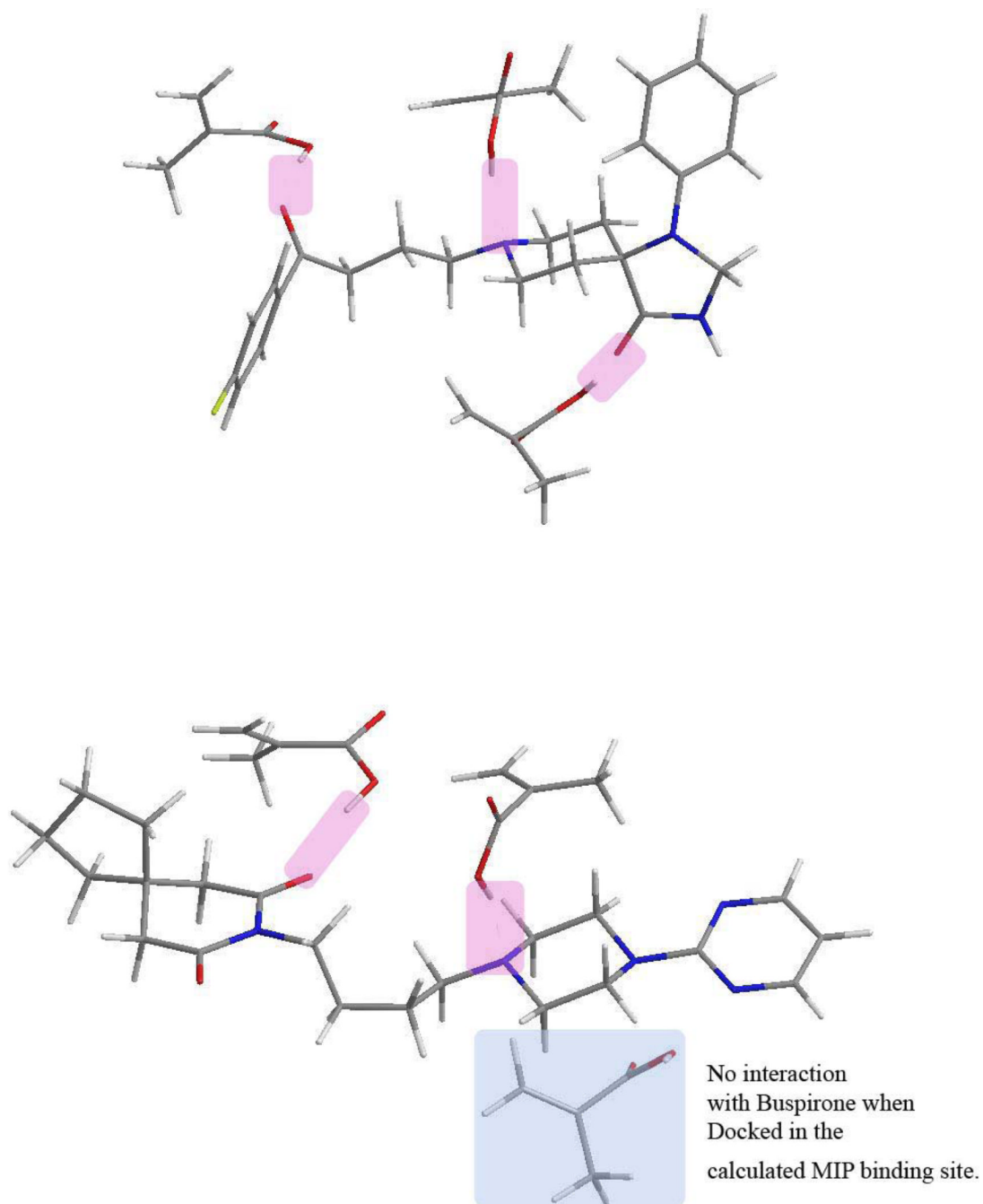


Figure 10. Models of 5-HT1A antagonists bound to three methacrylic acids in WAY-100635 MIP. Hydrogen bonding interactions are high-lighted. a) NAN-190; b) Spiperone; c) Buspirone.

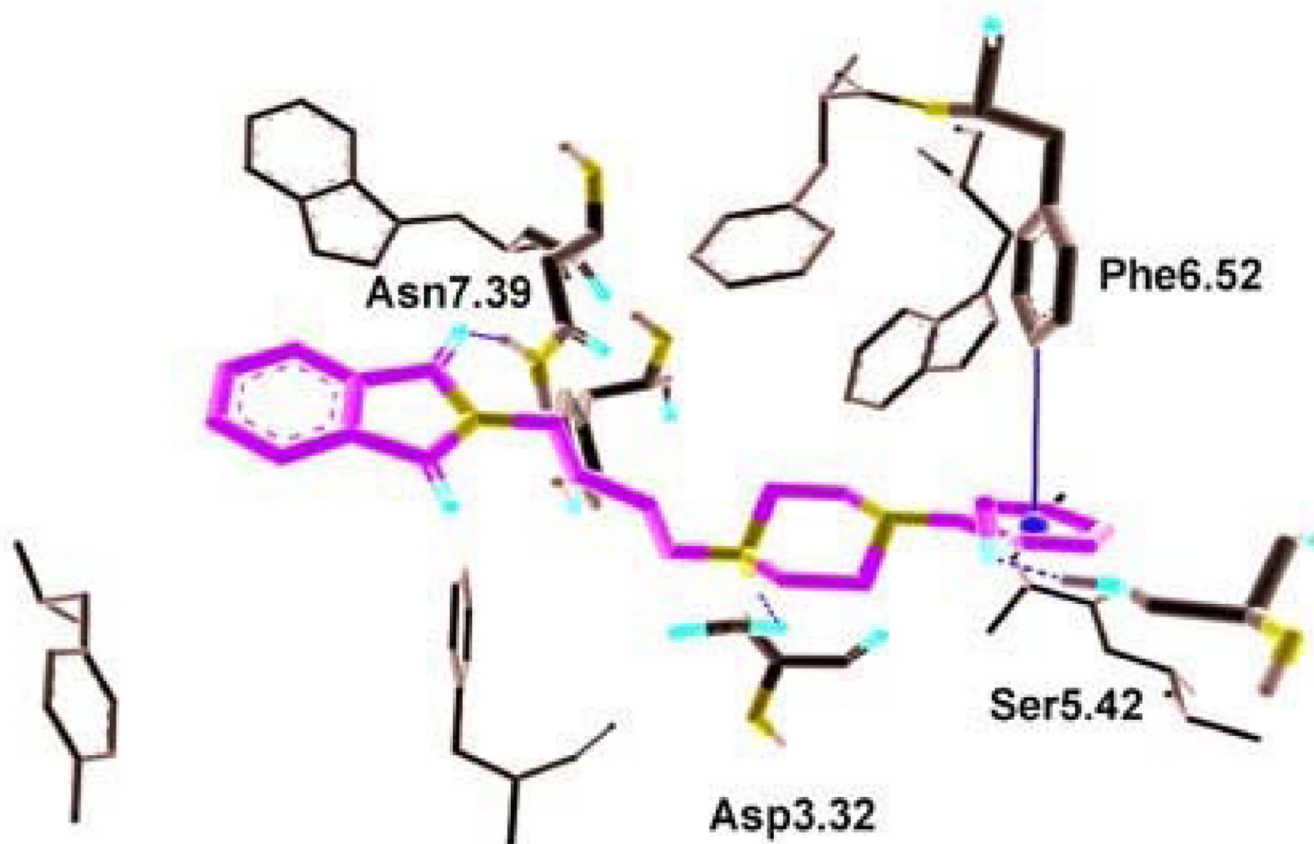
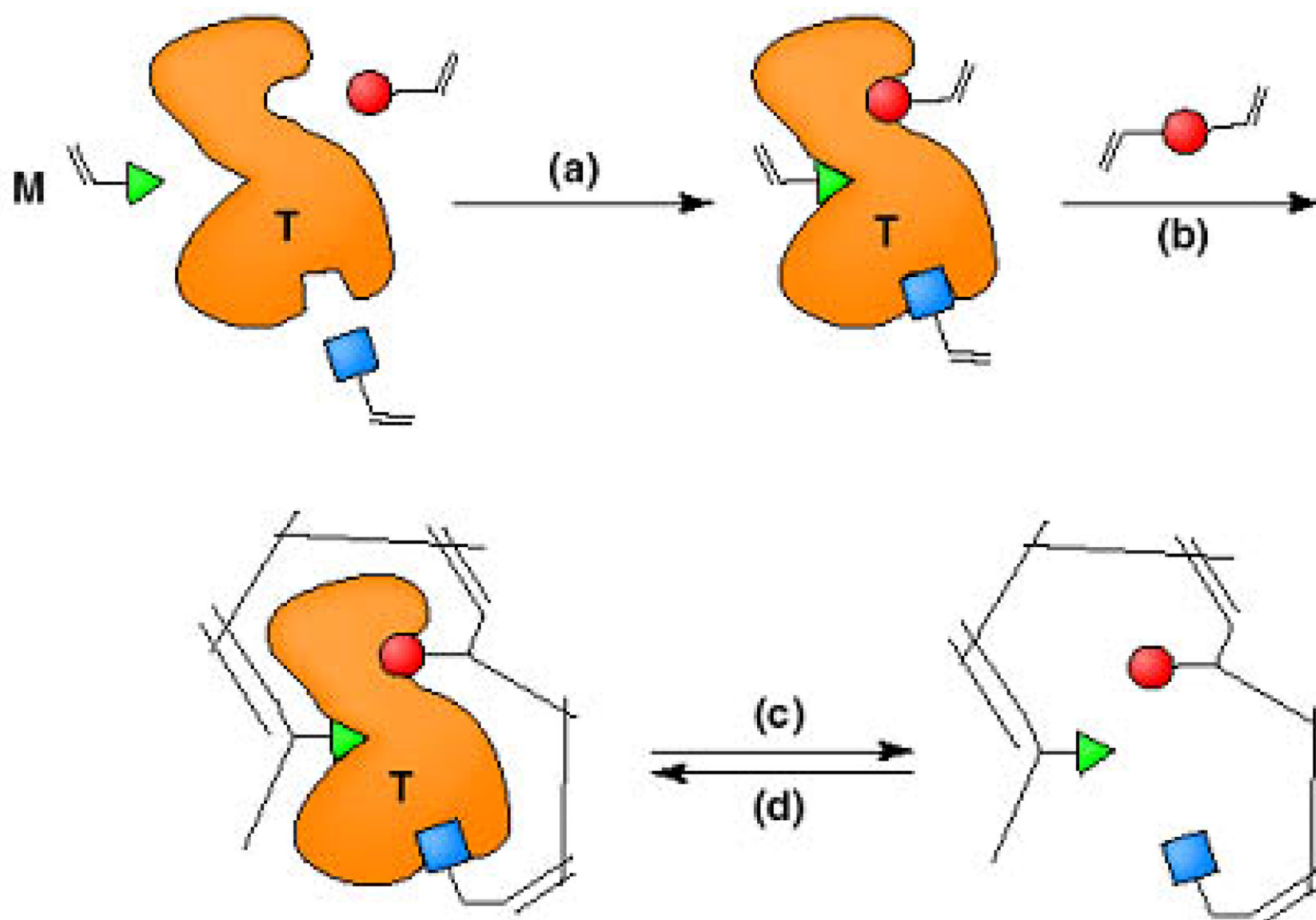


Figure 11.
Calculated interactions of NAN-190 bound to the 5-HT_{1a} binding site.⁴⁷

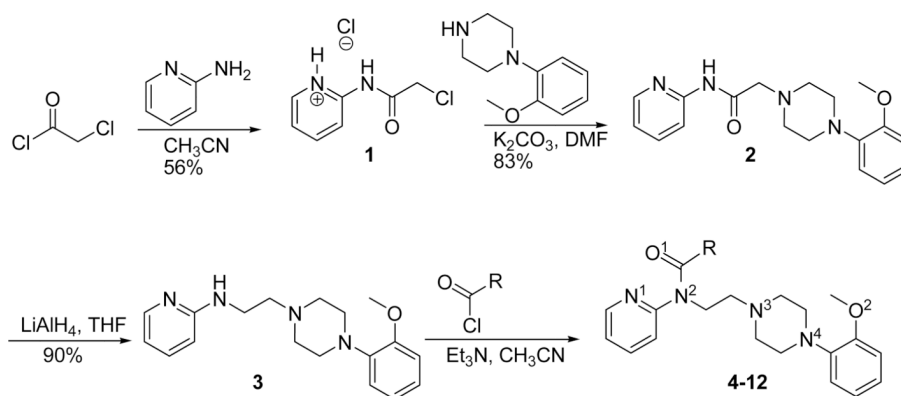


M (functional monomer) ; T (template)

Scheme 1.

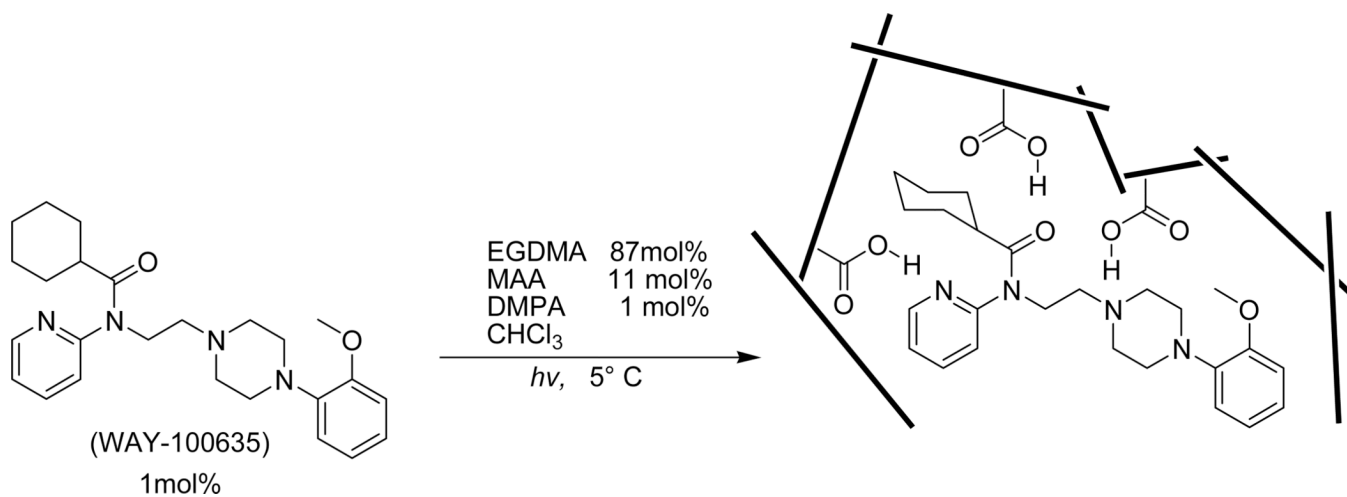
Schematic diagram of the molecular imprinting process.

(a) Formation of prepolymerization complex between template T and functional monomers M; (b) Copolymerization with an excess of cross-linking monomer; (c) Extraction of template from imprinted binding sites using porogen; (d) Rebinding of the template to imprinted binding sites.



R (Name)	R (Structure)	% Yield
Cyclohexyl, 4 (WAY-100635)		86%
Adamantyl, 5		85%
4-Iodophenyl, 6		88%
Phenyl, 7		90%
4-Propylphenyl, 8		86%
4-Pentylphenyl, 9		86%
4-Heptylphenyl, 10		76%
4-Fluorophenyl, 11		75%
2-Furoyl, 12		70%

Scheme 2.
Synthesis of WAY-100635 and analogues.



Scheme 3.
Synthesis of Molecular Imprinted Polymer for WAY-100635

Table 1

Physical characteristics of Molecular Imprinted and Control Polymers.

Characteristics	P(WAY)	P(BA)	P(BL)
Surface Area (m ² /g)	5.1	1.1	5.9
Pore Volume (ml/g)	~0	~0	~0

Table 2Chromatographic analysis on **P(WAY)** and **P(BL)** at a flow rate of 0.5 mL/min in 2% isopropanol in CHCl₃.

Compound	Substituent	P(WAY) (<i>k'</i>)	P(BL) (<i>k'</i>)	Imprinting Factor (<i>I_{org}</i>)
2	<i>N.A.</i>	0.2	0.2	1.0
WAY-100635	Cyclohexyl	3.4	0.3	11.3
5	Adamantyl	2.6	0.6	4.3
6	4-iodophenyl	2.7	0.4	6.7
7	Phenyl	3.1	0.4	7.7
8	4-propylphenyl	3.8	0.5	7.6
9	4-pentylphenyl	1.7	0.4	4.2
10	4-heptylphenyl	1.6	0.4	4.0
11	4-fluorophenyl	2.8	0.5	5.6
12	2-furoyl	3.8	0.6	6.3

Table 3

Chromatographic analysis on **P(WAY)** and **P(BL)** supports at a flow rate of 1 mL/min. in 7/3: ACN/10mM KH₂PO₄+K₂HPO₄ (aq., pH 5.8).

Compound	Substituent	P(WAY) (<i>k'</i>)	P(BL) (<i>k'</i>)	Imprinting Factor (<i>I_{aq}</i>)
2	<i>N.A.</i>	0.4	0.3	1.3
WAY-100635	Cyclohexyl	5.5	1.9	2.9
5	Adamantyl	6.1	2.8	2.2
6	4-iodophenyl	4.4	1.7	2.6
7	Phenyl	5.0	1.9	2.6
8	4-propylphenyl	5.9	2.8	2.1
9	4-pentylphenyl	7.8	4.0	2.0
10	4-heptylphenyl	9.9	5.3	1.9

Table 4Imprinting factors and 5-HT_{1A} receptor binding affinities for WAY-100635 and analogues.

Compound	Substituent	Imprinting Factor (I_{org}) ^b	Imprinting Factor (I_{aq}) ^c	K_i (nM) ^a
2	<i>N.A.</i>	1.0	1.3	<i>N.A.</i>
WAY-100635	Cyclohexyl	11.3	2.9	0.84
5	Adamantyl	4.3	2.2	<i>N.A.</i>
6	4-iodophenyl	6.7	2.6	2.6
7	Phenyl	7.7	2.6	2.5
8	4-propylphenyl	7.6	2.1	10.3
9	4-pentylphenyl	4.2	2.0	75.0
10	4-heptylphenyl	4.0	1.9	81.8
11	4-fluorophenyl	5.6	<i>N.A.</i>	3.3
12	2-furoyl	6.3	<i>N.A.</i>	<i>N.A.</i>

^aInhibition constants on the binding of [¹²⁵I]-(R)-(+)-trans-8-OH-PIPAT to Rat Hippocampal Homogenates.²⁹^b2% isopropanol in CHCl₃ at a flow rate of 0.5 mL/min.^c7/3: ACN/10mM KH₂PO₄+K₂HPO₄ (aq., pH 5.8) at a flow rate of 1 mL/min.

Table 5Chromatographic^a and 5-HT_{1A} receptor affinities for aryl piperazine antagonists.

Compound	P(WAY) (<i>k'</i>)	P(BL) (<i>k'</i>)	Imprinting Factor (<i>I</i>)	<i>K_i</i> (nM)
Sipiperone ³⁹	8.1	2.9	2.8	101 ^b
Buspirone ³⁹	2.6	1.5	1.7	14 ^b
NAN-190 ³⁸	3.4	1.0	3.4	0.6 ^b
WAY-100635 ²⁹	3.4	0.3	11.3	0.84 ^c

^a2% isopropanol in CHCl₃ at a flow rate of 0.5 mL/min.

Inhibition constants on the binding of *b*[³H]5-hydroxytryptamine to rat frontal cortex;

^b[³H]8-hydroxy-2-(di-*n*-propylamino)tetralin (8-OH-DPAT) to rat hippocampal homogenates;

^c[¹²⁵I]-(R)-(+)-trans-8-OH-PIPAT to rat hippocampal homogenates.