

Video Article

Characterizing Bacterial Volatiles using Secondary Electrospray Ionization Mass Spectrometry (SESI-MS)

Heather D. Bean¹, Jiangjiang Zhu¹, Jane E. Hill¹

¹School of Engineering, University of Vermont

Correspondence to: Jane E. Hill at jane.hill@uvm.edu

URL: <http://www.jove.com/video/2664>

DOI: [doi:10.3791/2664](https://doi.org/10.3791/2664)

Keywords: Bioengineering, Issue 52, rapid analysis, mass spectrometry, SESI, bacteria, volatiles, metabolic profiling

Date Published: 6/8/2011

Citation: Bean, H.D., Zhu, J., Hill, J.E. Characterizing Bacterial Volatiles using Secondary Electrospray Ionization Mass Spectrometry (SESI-MS). *J. Vis. Exp.* (52), e2664, doi:10.3791/2664 (2011).

Abstract

Secondary electrospray ionization mass spectrometry (SESI-MS) is a method developed for the rapid detection of volatile compounds, without the need for sample pretreatment. The method was first described by Fenn and colleagues¹ and has been applied to the detection of illicit drugs² and explosives^{3,4}, the characterization of skin volatiles⁵, and the analysis of breath⁶⁻⁷.

SESI ionization occurs by proton transfer reactions between the electrospray solution and the volatile analyte, and is therefore suitable for the analysis of hetero-organic molecules, just as in traditional electrospray ionization (ESI). However, unlike standard ESI, the proton transfer process of SESI occurs in the vapor phase rather than in solution (Fig. 1), and therefore SESI is best suited for detecting organic volatiles and aerosols.

We are expanding the use of SESI-MS to the detection of bacterial volatiles as a method for bacterial identification and characterization⁸. We have demonstrated that SESI-MS volatile fingerprinting, combined with a statistical analysis method, can be used to differentiate bacterial genera, species, and mixed cultures in a variety of growth media.⁸ Here we provide the steps for obtaining bacterial volatile fingerprints using SESI-MS, including the instrumental parameters that should be optimized to ensure robust bacterial identification and characterization.

Video Link

The video component of this article can be found at <http://www.jove.com/video/2664/>

Protocol

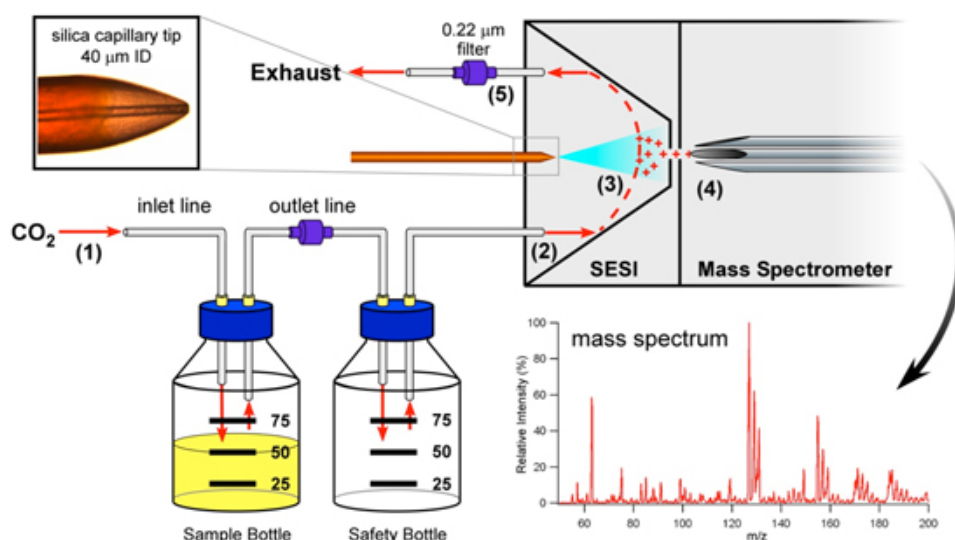


Figure 1. Schematic for SESI-MS analysis of bacterial volatiles. The headspace of the bacterial culture is displaced by CO₂ (1) into the SESI reaction chamber (2). As the volatiles traverse the SESI reaction chamber they pass through the electrospray cloud and become ionized (3). Once ionized, the volatiles are pulled into the mass spectrometer for analysis (4). Excess carrier gas and unreacted bacterial volatiles are

passed through a 0.22 μm filter (5), as an additional measure of protection, and vented to a chemical hood. Inset: The SESI electro spray needle is a silica capillary (40 μm ID) with a sharpened needle tip.

As a demonstration of the use of SESI-MS for the characterization of bacterial volatiles, *E. coli* K12 and *P. aeruginosa* PAO1 are cultured aerobically for 24 h in 50 mL LB-Lennox at 37 °C and the SESI-MS spectra of the headspace volatiles are collected in 2 minutes. Carbon dioxide (99.99 %) at a flow rate of 2 L/min is used as the carrier gas for volatile delivery to the reaction chamber. The SESI reaction chamber was custom built and fitted to an API-3000 (SCIEX), replacing the original electro spray ion source. The spectra are collected in positive ion mode using 0.1 % formic acid, 5.0% methanol, and 94.9 % water (v/v) as the electro spray solution, delivered at 5 nL/s through a non-conductive silica capillary with a sharpened needle tip (40 μm ID). The applied voltage is 2.5 kV. Analyst 1.4.2 software (Applied Biosystems) is used for data collection with the following parameters: 20 – 500 Da, MCA mode, 40 scans, 3 s/scan, and 2 min total analysis time.

1. Culturing system

1. Choose the appropriate vessel for growing your cultures, considering the growth requirements of the species in your experiment (e.g., aeration, light, temperature, etc.), as well as the efficient delivery of volatiles to the mass spectrometer. The culture bottles we choose to use are standard 100 mL Pyrex media bottles fitted with threaded caps that have at least two luer ports. An inlet line is inserted through one luer port for carrier gas delivery to the sample bottle and an outlet line is inserted through another port for VOC delivery to the instrument (Figure 1). Any additional ports are plugged.
2. Prior to culturing the samples, pressurize the vessels and submerge in water to check for leaks. Gas leaks are a primary cause of atypical results in the form of weak or absent volatile ion signals.

2. Biological experiment: set-up and safety considerations

1. Grow your cultures in the conditions appropriate to your hypothesis. It is recommended that at least two biological replicates, each with two technical replicates, are used for each variable.
2. Prepare a blank for every culture condition (medium, antibiotics, etc.) and incubate the blank under the same conditions as your samples.
3. Employ safety precautions that are appropriate for the biological agents you are using, taking into consideration the biosafety level(s) of the species.
4. To prevent contamination of your instrument and the gas transfer lines with viable biological agents, install filters of the appropriate pore size into the carrier gas line. The filters will not interfere with the transfer of volatiles to the SESI reaction chamber, but may slightly impact the efficiency of aerosol transfer.⁶
5. Use secondary containment or a biosafety cabinet when attaching the gas transfer cap to your culture bottle to assure the proper containment in the case of spilling biological agents.
6. Initiate and terminate carrier gas flow to your sample bottle in a way that will not build pressure inside the bottle.

3. Instrument optimization

NOTE: SESI-MS is specifically designed to sample volatiles, so limit the use of fragrant personal care items (e.g., colognes, mouthwash, lotions, fabric softener), gum, cigarettes, etc. before using the instrument. Tightly cap all volatile chemicals in the lab, and control air drafts as much as possible during testing.

The following instrumental parameters, which all affect signal intensity and stability, will need to be optimized for your instrument and experiment.

1. **Electrospray solution and flow rate:** Choose the appropriate electro spray solution for the class of molecules you wish to target, taking into account the operating instrument polarity (positive or negative-ion mode) and molecular character of the target compounds. In this experiment the electro spray solution is 0.1 % formic acid, 5.0 % methanol, 94.9 % water (v/v), which enhances the signal intensity of less polar molecules while providing good signal stability. The solution is delivered at a flow rate of 5 nL/s.
2. **Carrier gas flow rate:** The carrier gas flow rate can affect the electro spray stability and the signal intensity. CO₂ ($\geq 99.99\%$) at a flow rate of 2 L/min is used here.
3. **Needle shape and position:** The needle tip shape and position strongly affect the signal intensity and stability. When installing a new needle, the position of the needle must be optimized to create a balance between low background, high analyte signal intensity, and signal stability. In order to reproduce SESI spectra after a needle change, it is necessary to periodically collect spectra as you adjust the needle position until you are able to match the observed spectrum to your records. The distance from electro spray needle tip to mass spec orifice will be 1 – 5 mm.
4. **Applied voltage:** The voltage that is applied to the system affects the signal ion intensity and the stability of the electro spray Taylor cone. Additionally, the optimum voltage is dependent upon your electro spray solution and the needle tip shape. At the start of your series of experiments, determine the voltage that yields the optimum spectrum and signal stability for your system, and then use this voltage for all subsequent experiments. For our system, applied voltages of 2.0 - 5.0 kV provide optimal signal intensity and electro spray stability. For this experiment 2.5 kV is used.

4. Turning on and tuning the SESI-MS for analysis

1. Begin by ensuring that the voltage supply is turned off and that the system is discharged of electricity. Do this by 1) ensuring the indicator lights on the voltage supply are off, 2) ensuring the voltage on the multimeter is zero, and 3) grounding the electrical leads.
2. Install the appropriate electro spray solution for your experiment.
3. Turn on the carrier gas and set the flow to the rate appropriate for your experiment.
4. Apply pressure to the electro spray reservoir to initiate the delivery of the electro spray solution to the reaction chamber.

- Turn on the voltage supply and adjust the voltage to an appropriate value for your experiments.

NOTE: At this point the metal surfaces of the ionization source are capable of delivering a dangerous shock. Exercise great caution when working around the instrument once the voltage supply has been turned on.

- Set up a tuning method for monitoring the SESI-MS spectrum while making fine-tuned adjustments to the applied voltage. Use the acquisition parameters that you have optimized for your system and your experiment. Clear the Multiple Channel Acquisition (MCA) check box (if applicable) so that every scan produces an independent spectrum, set the acquisition time to 10 – 15 min, and start the acquisition. Spectra of the carrier gas background should now be observed.
- Make fine-tuned adjustments to the applied voltage to obtain a stable total ion chromatogram (TIC) and reproducible scans that match the CO₂ scans for your previous experiments. Once the voltage adjustments have been made, continue to collect spectra and a TIC for five minutes to ensure the instrument is stabilized.
- Once instrumental stability is ensured, set up the acquisition method as appropriate for your samples, adjusting the acquisition time, data range, and MCA selection as needed. Collect a carrier gas background spectrum for your records.

5. Obtaining a volatile fingerprint of your bacterial culture

- To collect a blank spectrum, direct the carrier gas flow through the bypass lines, and then attach the blank sample (valves closed) to the gas transfer lines of the instrument.
- Open the valves to the sample bottle, and close the valves of the bypass lines.
- Allow the system to equilibrate for 30 seconds, during which time the humidity in the reaction chamber is stabilizing. This period of equilibration is essential for obtaining reproducible spectra. To ensure that the system is equilibrated, you may wish to monitor the TIC, which will change during the equilibration period, and stabilize thereafter.
- Once the system is equilibrated, initiate spectrum collection.
- After the spectrum is collected, remove the sample bottle by first opening the carrier gas bypass lines, then closing the sample valves, and lastly removing the sample bottle. Flush the system with the carrier gas for 2 – 4 min, removing the moisture and adsorbed volatiles from the transfer lines, preventing sample-to-sample carryover.
- Repeat steps 5.2 - 5.5 for each bacterial sample, intermittently collecting additional blank spectra to ensure thorough blank subtraction. Incomplete blank subtraction will lead to the appearance of chemical background peaks in your processed spectrum that are common to atmospheric pressure ionization techniques, (e.g., phthalates, silicones, etc.).⁹
- When collecting your spectra, ensure that the ion signals are not exceeding the linear detection limits of your instrument, as determined by the TIC and the maximum intensity of individual peaks. Ions exceeding the upper limitations of your instrument's detector can generate artifact peaks that are not representative of your sample.

6. Representative Results

As an example of the SESI-MS spectra that can be obtained for bacterial volatiles, the positive ion mode volatile fingerprints for *E. coli* and *P. aeruginosa* grown aerobically in LB-Lennox for 24 h at 37 °C are shown (Fig. 2). The *E. coli* volatile spectrum is dominated by indole at $m/z = 118$, which gives *E. coli* cultures their characteristic odor, whereas the spectrum of *P. aeruginosa* contains a larger variety of protonatable peaks.

Please note that the relative intensities of the peaks in the volatile spectrum are dependent upon the instrumental parameters described in Section 3. These parameters must be tightly controlled from experiment to experiment in order to obtain reproducible spectra.

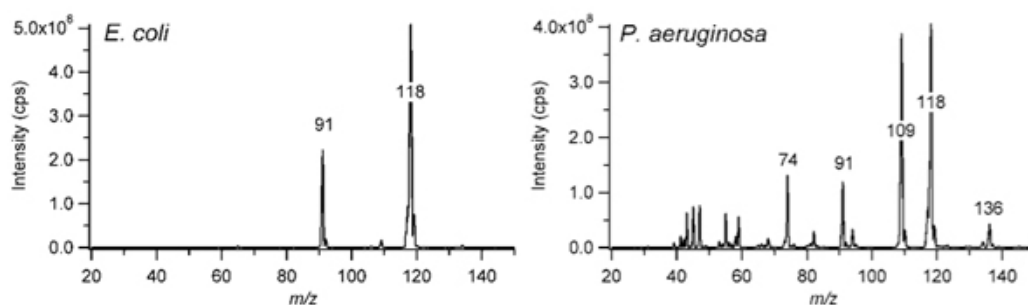


Figure 2. Blank-subtracted positive ion mode SESI-MS spectra (20 – 150 m/z) of *E. coli* K12 and *P. aeruginosa* PAO1 volatiles after 24 h aerobic growth in LB-Lennox at 37 °C. For more details about the peaks observed in the SESI spectra, please refer to Zhu, *et al.*⁸.

Discussion

Bacteria produce different combinations of volatiles, which can be utilized for bacterial identification¹⁰⁻¹² and the assessment of metabolic status. The SESI-MS method described here provides a means of rapidly characterizing bacterial volatiles (in two minutes or less) without any sample preparation, generating a bacterial "fingerprint" for the identification of the species.⁸ In the past several decades other atmospheric pressure ionization MS techniques have been applied to the characterization of volatile compounds, including selective ion flow tube (SIFT) and proton transfer reaction (PTR) mass spectrometry. The distinctive advantage that SESI provides over these other ionization methods is that it is possible to fragment specific peaks (provided the appropriate type of mass spectrometer has been adapted for SESI), which is an important tool for

compound identification. We did not address peak fragmentation in the protocol listed above, but for examples of how fragmentation information can be used in the characterization of bacterial volatiles, please refer to Zhu, *et al.*⁸

SESI-MS has direct application to the *in situ* detection of bacterial lung infections via breath analysis, but can also be applied to any setting in which volatile sampling is possible. For instance, the analyses of volatiles in urine, blood, and breath, which are relevant to the diagnosis of metabolic disorders, gastroenteric disease, cancer, and environmental exposure, are well suited to SESI-MS.^{13,14} SESI-MS also has a wide range of non-clinical VOC fingerprinting applications, including rapid analysis of foods for the characteristic volatiles associated with ripening, aging, or spoiling.¹⁵⁻¹⁸

Disclosures

No conflicts of interest declared.

Acknowledgements

This work is funded by NIH grant P20 RR021905-01, CF RPD grant STANTO07R0, and NASA grant NNNH09ZNE002C.

References

1. Fuerstenau, S., Kiselev, P. & Fenn, J. B. ESI-MS in the analysis of trace species in gases, in: *Proceedings of the 47th ASMS Conference on Mass Spectrometry Allied Topics*, Dallas, TX (1999).
2. Wu, C., Siems, W. F. & Hill, H. H. Secondary electrospray ionization ion mobility spectrometry/mass spectrometry of illicit drugs. *Anal. Chem.* **72**, 396-403 (2000).
3. Tam, M. & Hill, H. H. Secondary electrospray ionization-ion mobility spectrometry for explosive vapor detection. *Anal. Chem.* **76**, 2741-2747 (2004).
4. Martinez-Lozano, P., Rus, J., de la Mora, G. F., Hernandez, M. & de la Mora, J. F. Secondary electrospray ionization (SESI) of ambient vapors for explosive detection at concentrations below parts per trillion. *J. Am. Soc. Mass Spectrom.* **20**, 287-294 (2009).
5. Martinez-Lozano, P. & de la Mora, J. F. On-line detection of human skin vapors. *J. Am. Soc. Mass Spectrom.* **20**, 1060-1063 (2009).
6. Martinez-Lozano, P. & de la Mora, J. F. Electrospray ionization of volatiles in breath. *Int. J. Mass Spectrom.* **265**, 68-72 (2007).
7. Martinez-Lozano, P. & de la Mora, J. F. Direct analysis of fatty acid vapors in breath by electrospray ionization and atmospheric pressure ionization-mass spectrometry. *Anal. Chem.* **80**, 8210-8215 (2008).
8. Zhu, J., Bean, H. D., Kuo, Y.-M. & Hill, J. E. Fast detection of volatile organic compounds from bacterial cultures by SESI-MS. *J. Clin. Microbiol.* **48**, 4426-4431 (2010).
9. Guo, X. H., Bruins, A. P. & Covey, T. R. Characterization of typical chemical background interferences in atmospheric pressure ionization liquid chromatography-mass spectrometry. *Rapid Commun. Mass Spectrom.* **20**, 3145-3150 (2006).
10. Rudzinski, C. M., Herzig-Marx, R., Lin, J., Szpiro, A. & Johnson, B. Pathogen detection using headspace analysis. *Department of the Air Force*, Nov 15, 2004, 16 pp.
11. Lechner, M., Fille, M., Hausdorfer, J., Dierich, M. & Rieder, J. Diagnosis of bacteria in vitro by mass spectrometric fingerprinting: A pilot study. *Curr. Microbiol.* **51**, 267-269 (2005).
12. Schulz, S. & Dickschat, J. S. Bacterial volatiles: The smell of small organisms. *Nat. Prod. Rep.* **24**, 814-842 (2007).
13. Ligor, T. Analytical methods for breath investigation. *Crit. Rev. Anal. Chem.* **39**, 2-12 (2009).
14. Cao, W. Q. & Duan, Y. X. Breath analysis: Potential for clinical diagnosis and exposure assessment. *Clin. Chem.* **52**, 800-811 (2006).
15. Law, W. S. *et al.* Rapid characterization of complex viscous liquids at the molecular level. *Angew. Chem. Int. Ed.* **48**, 8277-8280 (2009).
16. Wu, Z. *et al.* Sampling analytes from cheese products for fast detection using neutral desorption extractive electrospray ionization mass spectrometry. *Anal. Bioanal. Chem.* **397**, 1549-1556 (2010).
17. Fleming-Jones, M. E. & Smith, R. E. Volatile organic compounds in foods: A five year study. *J. Agric. Food Chem.* **51**, 8120-8127 (2003).
18. Calkins, C. R. & Hodgen, J. M. A fresh look at meat flavor. *Meat Sci.* **77**, 63-80 (2007).