

METHODOLOGY ARTICLE

Open Access

Link-based quantitative methods to identify differentially coexpressed genes and gene Pairs

Hui Yu^{1,2,3†}, Bao-Hong Liu^{3,4†}, Zhi-Qiang Ye^{1,3}, Chun Li^{5,6}, Yi-Xue Li^{1,3,4*} and Yuan-Yuan Li^{1,3*}

Abstract

Background: Differential coexpression analysis (DCEA) is increasingly used for investigating the global transcriptional mechanisms underlying phenotypic changes. Current DCEA methods mostly adopt a gene connectivity-based strategy to estimate differential coexpression, which is characterized by comparing the numbers of gene neighbors in different coexpression networks. Although it simplifies the calculation, this strategy mixes up the identities of different coexpression neighbors of a gene, and fails to differentiate significant differential coexpression changes from those trivial ones. Especially, the correlation-reversal is easily missed although it probably indicates remarkable biological significance.

Results: We developed two link-based quantitative methods, DCp and DCE, to identify differentially coexpressed genes and gene pairs (links). Bearing the uniqueness of exploiting the quantitative coexpression change of each gene pair in the coexpression networks, both methods proved to be superior to currently popular methods in simulation studies. Re-mining of a publicly available type 2 diabetes (T2D) expression dataset from the perspective of differential coexpression analysis led to additional discoveries than those from differential expression analysis.

Conclusions: This work pointed out the critical weakness of current popular DCEA methods, and proposed two link-based DCEA algorithms that will make contribution to the development of DCEA and help extend it to a broader spectrum.

Background

Identification of differentially expressed genes (DEGs) is a key step in comprehending the molecular basis of specific biological processes and screening for disease markers. This methodology looks at absolute changes in gene expression levels, and treats each gene individually. However, genes and their protein products do not perform their functions in isolation, but in coordination [1], and the dynamic switch of a gene from one community to another always implies altered gene function [2,3]. Therefore, gene coexpression analysis was developed to explore gene interconnection at the expression level from a systems perspective [4-10], and 'differential coexpression analysis (DCEA)', as a complementary technique to the traditional 'differential expression analysis' (DEA) [11,12], was designed to investigate molecular

mechanisms of phenotypic changes through identifying subtle changes in gene expression coordination [11-14].

In a typical DCEA workflow, a pair of gene expression datasets under two conditions, such as disease and normal, are transformed to a pair of coexpression networks in which links represent transcriptionally correlated gene pairs (Figure 1A), and then the differential coexpression is calculated for each gene (Figure 1B). After surveying three previously proposed DCEA methods (Figure 1B): 'Log Ratio of Connections' (LRC) [15], 'Average Specific Connection' (ASC) [12], and 'weighted gene coexpression network analysis' (WGCNA) [16-19], we realize that although DCEA methods have been used more and more frequently in transcriptome studies [11,12,15,17,20,21], they have not been well developed, and the most crucial issue in DCEA - the choice of differential coexpression measure, is far from settled.

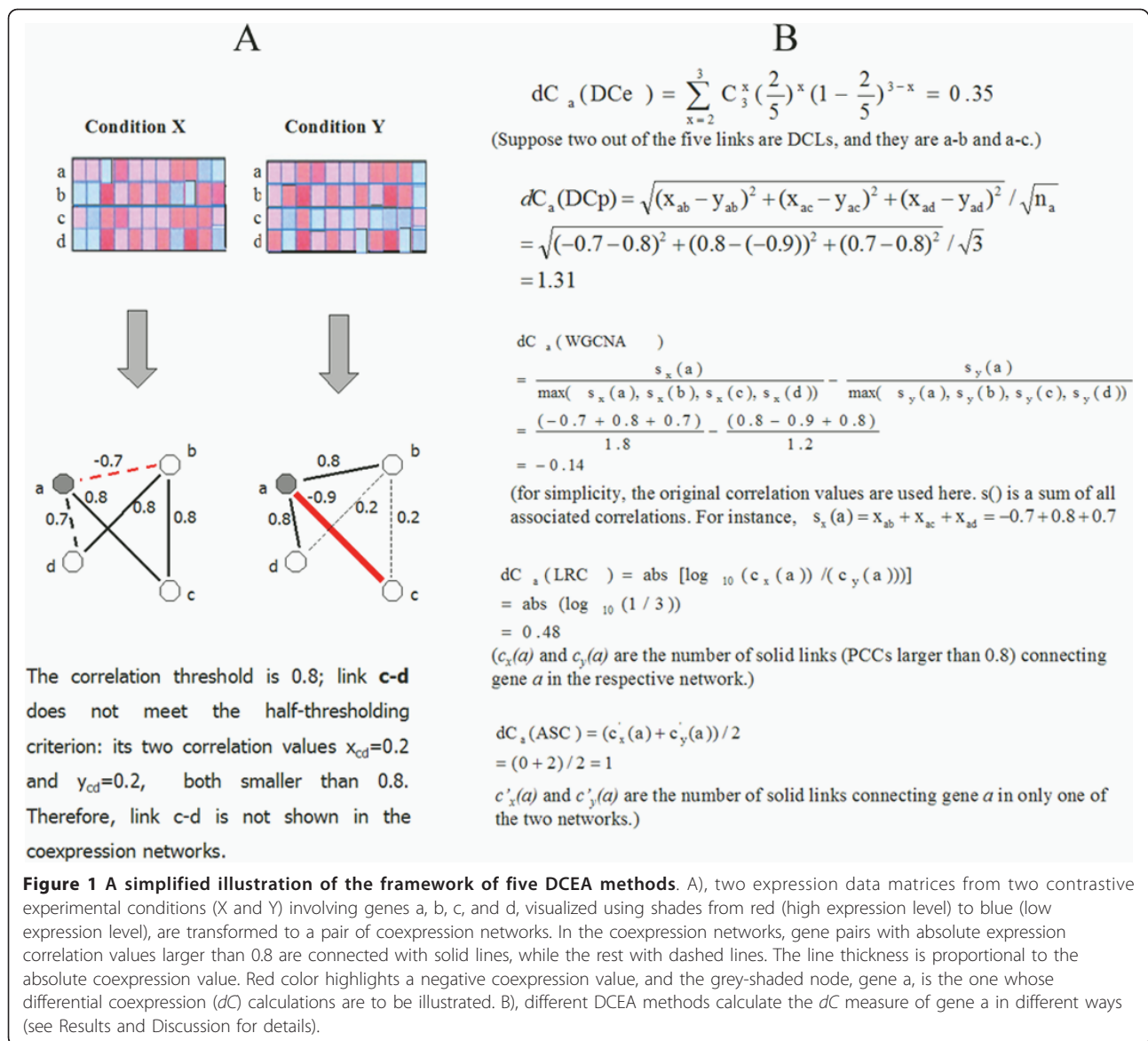
In LRC [15], the differential coexpression of a gene is defined as the absolute logarithm of the ratio of its two connectivities - the numbers of links connecting the gene in two coexpression networks. This method does

* Correspondence: yxli@scbt.org; yyli@scbt.org

† Contributed equally

¹Bioinformatics Center, Key Laboratory of Systems Biology, Shanghai Institutes for Biological Sciences, Chinese Academy of Sciences, 320 Yueyang Road, Shanghai 200031, P. R. China

Full list of author information is available at the end of the article



not distinguish the coexpression neighbors of a gene, and hence may fail if the connectivities of a gene in two networks are close while the gene neighbors are rather different. This defect is overcome in the average specific connection (ASC) method [12], which compares the 'specific connections' that exist in only one network. In simply dealing with the numbers of neighboring genes, however, both LRC and ASC fail to achieve a more precise characterization of differential coexpression that would be attainable if the quantitative expression correlation values were not discarded. The third method, WGCNA [16-19], goes beyond ASC and LRC as it compares the sums of expression correlation values associated with a gene between two conditions, which is essentially the comparison of weighted connectivities of

a gene. We therefore classify all these three methods into a gene connectivity-based type. Because these connectivity-based methods do not quantify coexpression changes link by link, they cannot precisely estimate the differential coexpression of a gene. As a result, they fail to distinguish dramatically changed links from those relatively trivial ones, and they also cannot detect a special type of coexpression change - correlation reversal between positive and negative, which is never rare [22,23] and probably has important biological significance [24,25].

Since coexpression is in essence a property of gene pairs (links), it should be more reasonable to design link-based DCEA methods that concentrate directly on the coexpression change of each gene pair. In this

work, we develop two link-based DCEA algorithms for identifying differentially coexpressed genes (DCGs) and differentially coexpressed gene pairs or links (DCLs). Based on the exact coexpression changes of gene pairs, these methods take into account both the gene neighbor identity information and the quantitative coexpression change information. It was demonstrated on simulated datasets that both novel methods had an improved performance over the existing methods to retrieve predefined differentially regulated genes and gene pairs. We furthermore applied the methods to a publicly available expression dataset on type 2 diabetes (T2D) and provided additional information to characterize T2D-related genes. The novel methods for DCEA analysis have been implemented in an academically available R package DCGL [26].

Results and Discussion

Novel 'half-thresholding' strategy in constructing gene coexpression networks

There are currently two accepted strategies, namely hard-thresholding [11,12] and soft-thresholding [16-19], for inferring gene coexpression network from expression correlation values. The hard-thresholding one, adopted by LRC and ASC, keeps a link in the coexpression network as long as the coexpression value exceeds a predefined threshold (solid lines in Figure 1A). The soft-thresholding strategy, adopted by WGCNA, keeps all possible links and raises the original coexpression values to a power 'beta' so that the high correlations are emphasized at the expense of low correlations (its formula in Figure 1B uses the untransformed correlation values for illustration convenience). Note that the coexpression value pair associated with the invisible link c-d in Figure 1A are utilized in the WGCNA dC formula (Figure 1B). In effect, while the 'hard-thresholding' strategy dichotomizes the continuous correlation values to be coexpression and non-coexpression, it is robust to minor variations and meanwhile its sensitivity is impaired, as some small coexpression changes (link a-d in Figure 1A, correlation values from 0.7 to 0.8) are treated equally as large ones (link b-d in Figure 1A, correlation values from 0.8 to 0.2). On the other side, the 'soft-thresholding' strategy can be overly sensitive when using a low soft-threshold (i.e. a low power) since noisy variations are kept in its calculation. One way to get around this is to increase the power. Another way, proposed here, is to devise a novel "half-thresholding" strategy.

With the "half-thresholding" strategy, we keep a link in both coexpression networks if at least one of the two coexpression values exceeds the threshold. In this way, we ignore minor variations of 'non-informative links' whose correlation values in both networks are below the

threshold, but thoroughly examine the possibly meaningful coexpression changes of links remaining in the two coexpression networks. Starting with this strategy, we come up with two novel methods for identifying differentially coexpressed genes and/or links from the pair of coexpression networks (Figure 2).

The 'Differential Coexpression Profile' method (DCp)

We consider two gene expression datasets under two different conditions. For each dataset, we calculate the Pearson correlation coefficients (PCCs) between the expression profiles of all gene pairs. For gene i and gene j , let x_{ij} and y_{ij} denote their PCCs under the two conditions. Then the two datasets are encoded into a set of paired correlations $CP = \{(x_{ij}, y_{ij})\}$ over all gene pairs. We then filter out non-informative correlation pairs using the half-thresholding strategy. Specifically, a pair is kept if any of the two PCCs has a q-value lower than a cutoff, say 25%, where the q-value is a false discovery rate estimated from the p-value of PCC using the Benjamini-Hochberg method [27]. This results in a subset of correlation pairs, which are equivalent to two coexpression networks with identical structure but different link weights (PCCs).

For gene i , the PCCs between it and its n neighbors in the filtered set form two vectors, $X = (x_{i1}, x_{i2}, \dots, x_{in})$ and $Y = (y_{i1}, y_{i2}, \dots, y_{in})$ for the two conditions, which are referred to as 'coexpression profiles'. We define the differential coexpression (dC) of gene i with Eq. 1.

$$dC_i(\text{DCp}) = \sqrt{\frac{(x_{i1} - y_{i1})^2 + (x_{i2} - y_{i2})^2 + \dots + (x_{in} - y_{in})^2}{n}} \quad (1)$$

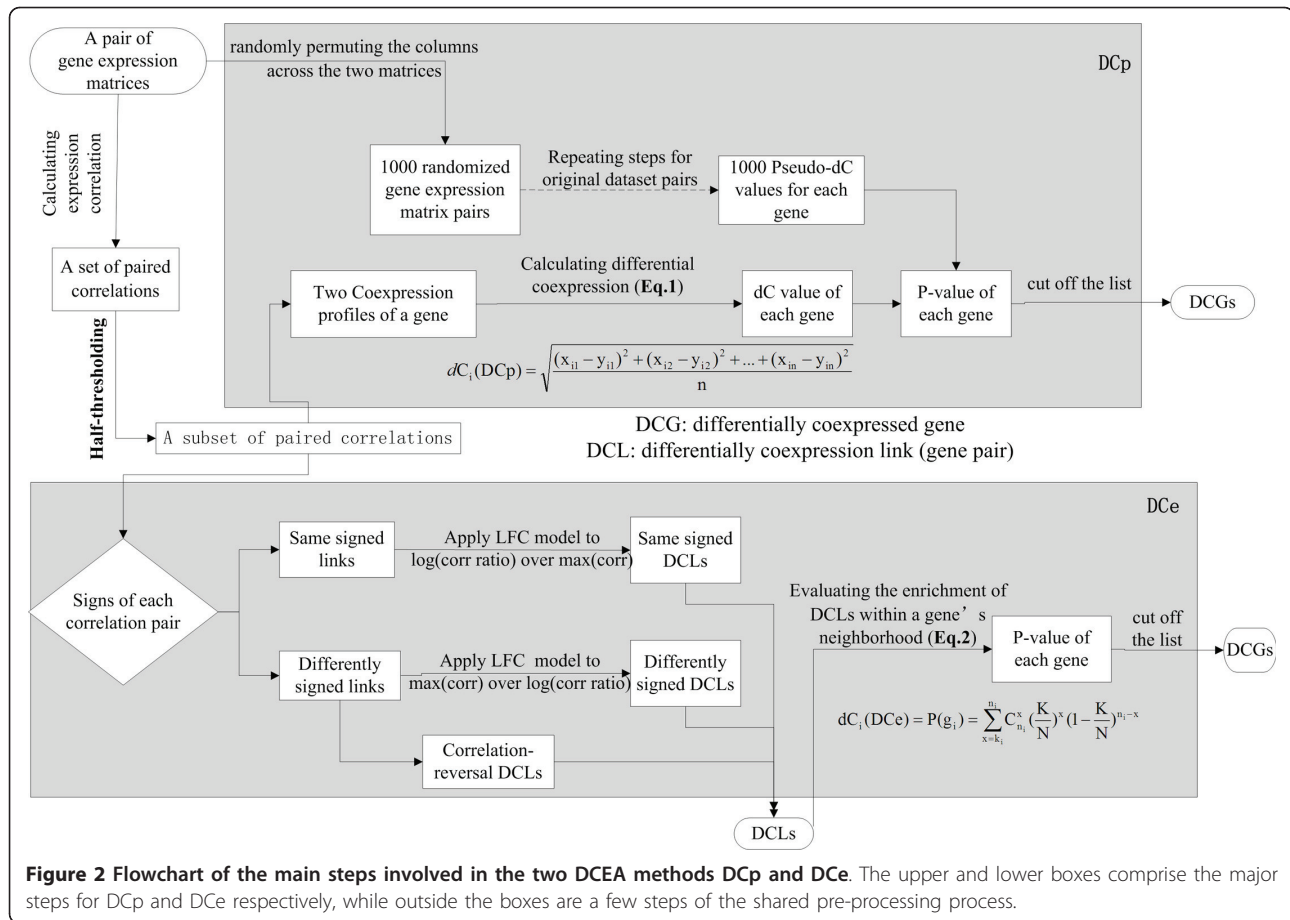
This measure captures the average coexpression change between a gene and its neighbors. As this method is based on the differential coexpression profiles, it is denoted as DCp. An example calculation of DCp dC is shown in Figure 1B.

The dC value can be used to rank genes. To evaluate the statistical significance of dC , we perform a permutation test, in which we randomly permute the disease and normal conditions of the samples, calculate new PCCs, filter gene pairs based on the new PCCs, and calculate the dC statistics. The sample permutation is repeated 1000 times, and a large number of permutation dC statistics form an empirical null distribution. The p-value for each gene can then be estimated.

The major steps of the DCp algorithm is outlined in the upper box of Figure 2.

The 'Differential Coexpression Enrichment' method (DCe)

While DCp takes advantage of the coexpression changes of individual gene links, its final goal is to identify differentially coexpression genes (DCGs). To extend the



findings from DCGs to differentially coexpressed links (DCLs), we devise another method, 'Differential Coexpression Enrichment', which first identifies DCLs, and then identifies DCGs. As the method is based on enrichment of DCLs, it is named DCE.

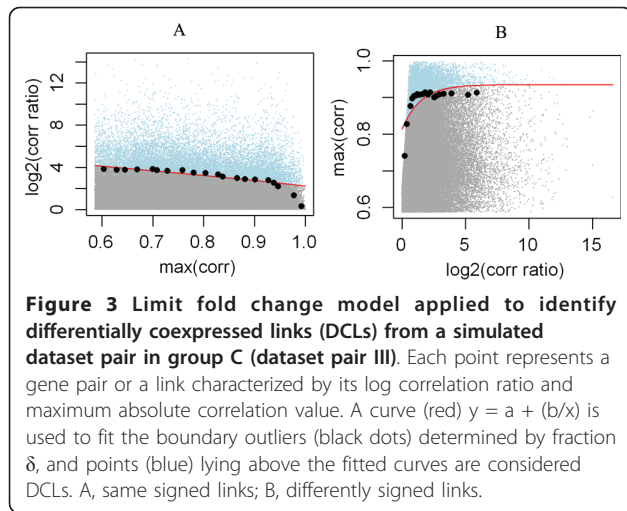
The filtered correlation set (determined with a cutoff ρ of expression correlation values or q_{th} of the q values, as described in the DCp method details) represents the beginning links to be screened for DCLs. For a link or a pair of correlation values, we first determine the maximum (absolute) correlation and the log (absolute) correlation ratio. If the two correlation values of a link are same signed, we intuitively propose that the log correlation ratio may serve as a basic measure for the link's differential coexpression; in contrast, if the link has two differently signed correlation values, its differential coexpression is more likely to be reflected by the maximum correlation. We then separately deal with the same signed links and the differently signed links using the limit fold change (LFC) model [28]. LFC is a robust statistical method originally proposed for selecting differentially expressed genes (DEGs), by modeling the relationship between maximum expression and log

expression ratio of genes. In coexpression analysis, we instead model the relationship between maximum coexpression and log coexpression ratio of links.

For the same signed links, as is illustrated in Figure 3A, we categorize them into bins according to their maximum coexpression values, and within each bin, select a fraction δ of links with highest log fold changes, and fit a curve $y = a + (b/x)$ over the boundary links. Links lying above the fitted curve are considered as DCLs. In most experiments of this work, we set $\delta = 0.1$, but the effect of tuning δ was tested in the following simulation study.

Among the differently signed links, those with both PCCs surpassing the cutoff ρ of correlation values or q_{th} of the q -values are directly taken out as DCLs, specifically, correlation-reversal DCLs. In parallel to the same signed case, LFC model is applied to the remaining differently signed links with the roles of maximum coexpression and log coexpression ratio flipped due to our foresaid consideration (Figure 3B). Again, links above the fitted curve are considered as DCLs.

Suppose there are N links in each filtered coexpression network, from which we have determined K DCLs



using the procedures above. For gene i with n_i links of which k_i are DCLs, the p-value is calculated based on a binomial probability model (Eq. 2). The obtained p-value can be regarded as the dC measure of a gene, with a smaller value indicating a higher degree of differential coexpression. The enrichment step of DCE method is also illustrated in Figure 1B.

$$dC_i(\text{DCE}) = P(g_i) = \sum_{x=k_i}^{n_i} C_{n_i}^x \left(\frac{K}{N}\right)^x \left(1 - \frac{K}{N}\right)^{n_i-x} \quad (2)$$

The major steps of the DCE algorithm is outlined in the lower box of Figure 2.

Comparing different DCEA methods in simulation experiments

In a simulation experiment, we first define two gene regulation networks, which are overall similar but have differences in a small portion of regulation relationships (gene links), then simulate two gene expression datasets based on the two networks, respectively. The predefined discrepant regulations are termed differentially regulated links (DRLs) and the associated genes are differentially regulated genes (DRGs). We evaluated DCp and DCE in terms of their capability to retrieve the predetermined DRGs and DRLs from the simulated data. Also included in the comparative evaluation were three representative DCEA methods that we reviewed in the Background: LRC [15], ASC [12], and WGCNA [16,19]. Note that the WGCNA has evolved into two slightly different versions, the ‘signed’ and the ‘unsigned’, and here we adopted the signed version and set its parameter beta at the default 12.

We first analyzed a pair of simulated datasets (dataset pair Z) from a published study [29], which were generated based on two yeast signaling networks using

SynTReN [30]. A total of seven genes, PHO2, FLO1, MBP1_SWI6, FLO10, TRP4, CLB5 and CLB6, were involved in the altered interconnection [29], therefore taken as DRGs. As Table 1 shows, the DCp dC score ranked all seven DRGs exclusively at the top, while the DCE p-value ranked six at the top and the other one at the 8th position; both methods had better performances than the other three methods. It was noticeable that SWI4, a gene falsely detected in the original study [29], puzzled WGCNA and ASC (which both ranked it at the 5th position), but not DCp and DCE (which ranked it at the 9th or 15th position).

Additionally, we used SynTReN to simulate three groups of dataset pairs (denoted data groups A, B, C) based on a predefined E.coli gene regulatory network of a total of 1300 genes [30]. Specifically, we selected a sub-network of 1000 genes as the original network, and exerted artificial perturbation on 10% of its links as if it was from a different condition. The three groups had different perturbation types. For group A, we used regulation-elimination (removing a link between a pair of genes). For group B, we used regulation-switch (switching the regulation effect between activation and repression). For group C, we applied half regulation-

Table 1 The twenty yeast proteins involved in simulated dataset pair Z and the ranking of them by DCEA methods DCp, DCE, signed WGCNA, ASC, and LRC separately.

protein	DCEA methods				
	DCp	Dce	signed-WGCNA	ASC	LRC
PHO2	1	1	3	1	5
MBP1_SWI6	2	3	8	2	8
FLO1	3	2	1	10	7
FLO10	4	4	2	6	4
TRP4	5	5	4	7	9
CLB5	6	6	14	3	18
CLB6	7	8	18	4	19
ACE2	8	14	16	15	1
SWI4	9	15	5	5	16
CDC11	10	7	9	12	17
CDC10	11	11	10	13	10
SWI4_SWI6	12	16	6	8	12
HTB1	13	13	7	11	15
ACT1	14	12	13	14	6
CAF4	15	9	19	19	3
LEU2	16	17	11	9	13
SPT16	17	18	15	18	11
HO	18	10	17	16	2
CTS1	19	19	12	17	14
SNF6	20	20	20	20	20

The proteins are sorted by the DCp ranks. Bold refers to the truly differentially regulated genes (DRGs) in the simulation.

elimination and half regulation-switch. For each group, we generated five dataset pairs, one simulated from the original network and the other from the perturbed network.

We applied every DCEA method on every dataset pair and plotted the Receiver-Operating-Characteristic (ROC) curves to show the balance of the five methods between sensitivity and specificity in identifying DRGs (Figure 4). Dataset group A, simulating regulation-elimination, seemed a tough problem for all methods, as none of the ROC curves was obviously far away from the diagonal line representing random assortment (Figure 4A). Nevertheless DCp performed better than the others. The advantage of DCp and DCe over the other methods was increased on group B which simulated regulation-switch, while the performances of ASC and LRC were not significantly different from a random guess (Figure 4B). On dataset group C with both regulation-elimination and regulation-switch included, DCp and DCe still outperformed other methods (Figure 4C). In all, DCp and DCe did better in retrieving DRGs, especially on data involving switched regulation relationships. The WGCNA method, which utilizes the continuous expression correlation values as DCp and DCe do, ranked immediately after DCp and DCe, ahead of LRC and ASC.

Since the signed WGCNA performed better than the other existing methods ASC and LRC and it actually gains more acknowledgement from users, we additionally performed a more comprehensive comparison of WGCNA against the novel methods, with different settings of the key parameter beta of WGCNA taken into account. It turned out that in general the signed WGCNA was more powerful than the unsigned WGCNA, but yet both were incomparable to DCp and DCe regardless of the choices of the parameter beta (Additional File 1: more parameter testing for gene-level evaluation). We also found that the WGCNA methods' performances deteriorate with the beta value, especially when beta exceeded eight, and that the WGCNA methods were relatively more competent for the regulation-elimination scenario (Additional File 1: more parameter testing for gene-level evaluation).

As all these DCEA methods except WGCNA involve a gene link filtering step, or a correlation value thresholding process, we repeated the performance comparison on various q_{th} values (0.25, 0.2 and 0.1); additionally, as the perturbation rate of 10% was set arbitrarily, we also tried another two levels, 20% and 30%. It proved that DCp and DCe consistently outperformed the other three with DCp doing better than DCe in most situations (Additional File 1: more parameter testing for gene-level evaluation). We also found that for perturbation rates 10% and 20%, algorithm performances

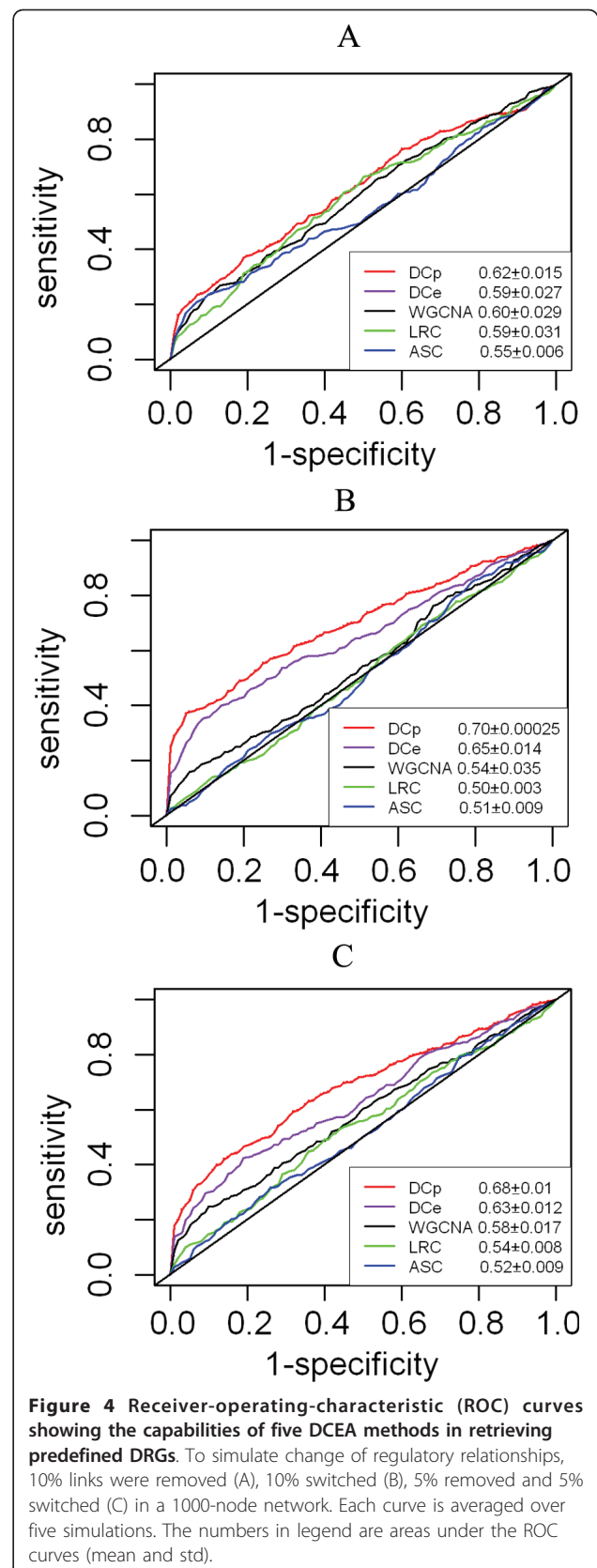


Figure 4 Receiver-operating-characteristic (ROC) curves showing the capabilities of five DCEA methods in retrieving predefined DRGs. To simulate change of regulatory relationships, 10% links were removed (A), 10% switched (B), 5% removed and 5% switched (C) in a 1000-node network. Each curve is averaged over five simulations. The numbers in legend are areas under the ROC curves (mean and std).

generally increased with more stringent q_{th} values, and they dropped a little when the perturbation rate reached 30%. Finally, we tested the sensitivity of algorithms to sample sizes of datasets. At sample size five, six, seven, eight, nine, ten, fifteen and twenty, it was shown that the performances of all algorithms were basically stable, and that DCp and DCE were better than the others (Additional File 1: more parameter testing for gene-level evaluation).

Finally, we compared the only two methods, DCE and ASC, which have the potential to retrieve DCLs, with respect to their capability to retrieve DRLs. It was found that, in three simulated dataset pairs (I, II, and III), DRLs always accounted for a tiny fraction of identified DCLs, but DCE outperformed ASC in enriching DRLs in DCLs (Table 2). As gene coexpression changes may spread from the perturbed links to adjacent ones, we took DRLs and their one-step adjacent links as 'extended DRLs'. Likewise, DCE enriched the extended DRLs (Table 2), which was statistically significant according to tests against empirical distribution of randomly sampled links (Additional File 2: significance in link-level evaluation). In an actual practice of DCE, in order to narrow down the identified DCLs for a follow-up examination, one can raise coexpression value cutoffs (ρ) or lower outlier fractions (δ). We found that raising ρ refined correlation-reversed DCLs efficiently, while lowering δ not only cut down the number of DCLs of the other two types (same sign and different sign) but improved the accuracy of identified DCGs (Additional File 3: reducing DCL scales). Besides, the identified DCLs could also be sifted according to their relevance with a selected gene list, for example, DCGs.

In summary, the results from simulation studies indicate that reasonably designed DCEA methods can retrieve pre-set differentially regulated genes and links from expression datasets. That is, based on the results from a series of rigorously designed simulation experiments, we provide a preliminary support to the anticipation that DCEA methods are capable of deciphering differential regulation or differential networking underpinning diseases [13].

Table 2 Fractions of DRLs or 'extended DRLs' in DCL sets.

Golden Standard	Dataset	Background	DCE-DCLs	ASC-DCLs
True	I	8.8e-4	1.5e-3	8.5e-4
DRLs	II	1.0e-3	3.7e-3	7.1e-4
	III	9.8e-4	3.4e-3	7.9e-4
Extended	I	0.44	0.49	0.45
	II	0.43	0.67	0.43
	III	0.43	0.63	0.44

I, II, and III denote three dataset pairs from the data groups A, B, and C, respectively.

Uniqueness of DCp and DCE compared to existing DCEA methods

We attributed the improved performance of DCp and DCE mainly to the exploitation of the linkwise quantitative coexpression changes, which starts with our 'half-thresholding' strategy in coexpression network construction, and continues with the dC measures reflecting the linkwise coexpression changes (Eq. 1 and Eq. 2). Capturing the linkwise coexpression changes is much more reasonable than merely extracting the connectivity and/or neighbor identity, or getting the summed correlation values. That is why DCp and DCE outperformed existing methods LRC, ASC, and WGCNA in simulation studies.

We tried designing our methods based on coexpression changes of all possible links, i.e., discarding the half-thresholding, but found the performance was not comparable to the current version of DCp and DCE (data not shown). This suggests the necessity of the link prescreening step. However, it is not easy to determine the optimal coexpression threshold for each specific study, and further investigation on optimizing our half-thresholding procedure is necessary.

It is noticeable that DCp and DCE are especially good at identifying a special type of coexpression change, the coexpression reversal between positive and negative, which is why they have the greatest advantage in the simulated datasets involving regulation-switches. In previous studies, negative correlation values were often flipped to positive values [12], set to zero [31], or crushed to a very narrow region on the right of zero [16,19], and these operations hindered coexpression reversals from emerging. In reality, coexpression reversal probably has biological significance. Taking the coexpression of *p53* and *Klf4* as an example, it was recently reported that the positive or negative correlation between these two genes determines the outcome of DNA damage - DNA repair or apoptosis [24]. We believe our attention to this special coexpression change will help to explore subtle mechanisms involved in tuning of molecular balances between opposite factors.

Re-analyzing a T2D dataset from the perspective of differential coexpression

For an application of the novel DCEA methods, we downloaded dataset GSE3068 from the Gene Expression Omnibus (GEO) database. GSE3068 was designed to study type 2 diabetes (T2D) in rats. It involves 6,955 probesets interrogating 4,765 genes, and the twenty samples herein were divided equally into a T2D group and a normal group. Details on preprocessing this dataset are in "Additional File 4: Preprocessing GSE3068".

We applied DCp to GSE3068 to identify differentially expressed genes (DCGs) and obtained 337 (p-values cut-off 0.05, FDR < 65%) DCGs out of 4765 genes. We listed

the 337 DCGs in “Additional File 5: 337 DCGs identified by DCp” regarding their *dC* scores, log fold changes, and potential relevance with T2D (T2D-associated or T2D-related genes are provided in Additional File 6: 52 T2D-associated genes & 425 rat T2D-related genes). The DCGs with T2D relevance deserving more attention were selected and shown in Table 3.

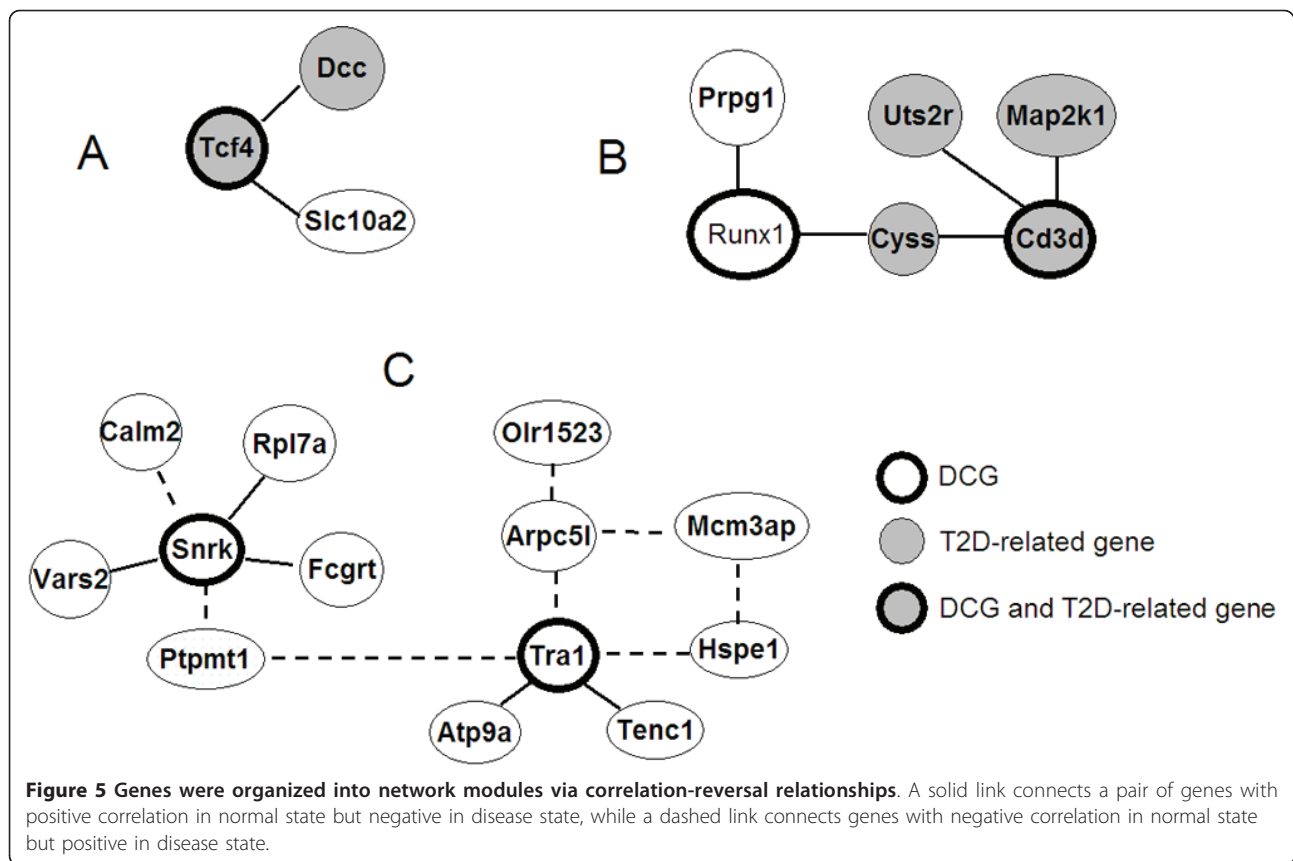
We then identified DCLs using DCE methods, and narrowed them down to 4046 DCLs that were connected with the 337 DCGs (Additional File 7: DCLs identified by DCE). As we believed that correlation-reversal was a noteworthy but neglected type of differential correlation, we took a close-up look at those correlation-reversed DCLs. Out of a total of 110 reversed DCLs (Additional File 8: network modules organized by solely correlation reversals), 73 were connected with the 337 DCGs. Figure 5 shows three sub-network modules organized solely by reversed links.

Subnetwork A (Figure 5A) and B (Figure 5B) included quite a number of previously reported T2D-related genes: *Tcf4* and *Dcc* [32]; *Cd3d* [33], *Uts2r* [34] and *Map2k1* [35]. Subnetwork C (Figure 5C) was the largest reversed DCL-organized module and it contained an interesting four-gene-circuit (including *Arpc5l*, *Tra1*, *Mcm3ap*, and *Hspe1*) of consistent negative-to-positive correlation reversal. Although not being previously reported to be related with T2D, the genes and reversed links included in Figure 5C, as well as other novel cases reported in the supplementary tables of DCGs and DCLs (Additional File 5: “337 DCGs identified by DCp.xls” and Additional File 7: “DCLs identified by DCE.xls”), should receive adequate attention for their distinct traits from the perspective of differential coexpression. Further studies on the transcriptional mechanisms and functional consequences involved in these DCGs and DCLs would be helpful for elucidating

Table 3 DCGs with existing evidence of T2D-relevance.

gene	DCE.dC	Expression fold change	Reported Relevance
Rapgef4	1.29	0.81	T2D-related
Nr5a1	1.28	0.56	T2D-related
Cd28	1.21	1.21	KEGG rno04940
Ucp2	1.18	1.31	T2D-related
Pparg	1.17	1.05	T2D-related; T2D-associated
RT1-Bb	1.16	0.74	KEGG rno04940
Cox6a2	1.15	0.57	KEGG rno00190
Bdnf	1.13	2.13	T2D-related
Gad1	1.12	0.23	KEGG rno04940
Prkaa1	1.12	1.03	KEGG rno04910
Prkab1	1.11	0.52	KEGG rno04910; T2D-related
RT1-Da	1.09	1.99	KEGG rno04940
Nos3	1.09	0.76	T2D-related
Cox6c1	1.09	0.62	KEGG rno00190
Inpp5d	1.08	2.36	KEGG rno04910; T2D-related
Arnt	1.07	0.71	T2D-related
Sstr5	1.06	1.77	T2D-related
Lipe	1.06	2.04	KEGG rno04910; T2D-related
Cacna1a	1.06	0.55	KEGG rno04930
RT1-Ba	1.05	1.71	KEGG rno04940
Tnfrsf1a	1.05	1.07	T2D-related
Il6	1.05	1.77	T2D-related
Gip	1.05	0.63	T2D-related
Cacna1c	1.05	0.74	KEGG rno04930
Mapk10	1.03	0.79	KEGG rno04930; KEGG rno04910; T2D-related
Nras	1.02	0.71	KEGG rno04910
Serpine1	1.02	2.07	T2D-related
Kcnj5	1.01	0.74	T2D-related
Hla-dma	1.01	2.84	KEGG rno04940

Included genes appeared in at least one of the following sources: KEGG T2D-related pathways (Rno04930: type II diabetes mellitus; rno04940: type I diabetes mellitus; rno04910: insulin signaling pathway; rno00190: oxidative phosphorylation); a self-compiled set of 425 T2D-related genes in rat; a list of 52 T2D-associated genes. The lists of “T2D-related” genes and “T2D-associated” genes are provided in “Additional File 6: 52 T2D-associated genes & 425 rat T2D-related genes”.



how the changed coordination contributes to the pathogenesis of T2D.

Since GSE3068 had been thoroughly analyzed from the differential expression perspective [36], we investigated the relationship between the two gene expression properties, differential expression (DE) and differential coexpression (DC) in this dataset. We first examined the consistency between the DCp-identified 337 DCGs and the 119 previously reported DEGs, of which 36 could be corrected by oral administration of vanadyl sulfate (VS). It was found that the overlapping of DCGs with the 119 DEGs was not significant (hypergeometric test $p = 0.22$), but that with the 36 VS-corrected DEGs was significant (hypergeometric test $p = 0.01$). This indicates that differential expression and differential coexpression are somewhat related to each other at least in the T2D context.

We then looked at the disagreement between DCGs and DEGs. A previous differential coexpression analysis on human cancer using the ASC method reported a quite low level of overlapping between DCEA and DEA results (3%) [12]. In our case, DCGs and DEGs had only 3% (DCGs) or 8.4% (DEGs) in common, with the rest majority genes in disagreement. For instance, both *Pparg* and *Tspan8* had been found to play key roles in T2D pathogenesis [37-39], but they were identified by

DCEA and DEA respectively. *Pparg* had an expression fold change of 1.05 in the GSE3068 dataset (Table 3), so its relevance with T2D was not discerned by DEA. From the perspective of DC, however, it stood out since its dC value (1.17) was ranked 28th of all 4765 genes. On the contrary, *Tspan8*, with a large expression change (2.3) but a minor coexpression change ($dC = 0.57$), was identified as a DEG but not a DCG.

According to our brief comparison at the gene level, DEA and DCEA are both powerful techniques to find out useful information from expression data. They are significantly related and mutually complementary. Similar conclusion was made at the pathway level based on the observed interplay of gene differential expression and gene differential coexpression in mouse mammary gland tumor [40].

Conclusions

In this work, we pointed out the critical weakness of current popular differential coexpression analysis methods, and developed two novel link-based algorithms, DCp and DCe. DCp and DCe differ from previous methods primarily in that they are designed to make use of link-specific correlation change values directly while previous methods mainly focuses on the gene

connectivity. A novel strategy to filter links in coexpression networks, the half-thresholding strategy, is also proposed as a necessary pre-processing step of the two novel methods.

Based on the results from a series of rigorously designed simulation experiments, we proved that reasonably designed DCEA methods were able to discriminate pre-set differentially regulated genes and links; in another word, we provided a preliminary support to the anticipation that DCEA methods are capable of deciphering differential regulation or differential networking underpinning diseases [13]. Of the five DCEA methods we surveyed, we proved the overall performances of our DCp and DCE against three existing algorithms, and identified WGCNA as the best of the existing three. It is noticeable that while the existing methods were somewhat comparable to link-based methods in case of pure regulation-elimination perturbations, they were significantly outperformed when regulation-switch perturbations were introduced. Regulation-switch is believed to be an relevant phenomenon in fine-tuning of signal transduction [24].

Applying DCp and DCE to a real expression dataset designed for T2D study, we identified 337 DCGs and their associated 4046 DCLs, which may serve as a useful resource for identification and characterization of T2D relevant genes. We also analyzed the relationship between DEA and DCEA in this example, and pointed out that DEA and DCEA are significantly related and mutually complementary techniques to make discoveries from expression data.

Recently, differential coexpression analysis is being appreciated as a significant step towards the differential networking analysis of complex diseases [41], and the area of DCEA is undergoing rapid development as various solutions to set-wise differential coexpression problems are being proposed [20,21,42]. We believe that our methodological improvement will benefit the development of DCEA and help extend it to a broader spectrum of biomedical studies.

Links

The Gene Expression Omnibus database <http://www.ncbi.nlm.nih.gov/geo/>

The DCGL package <http://cran.r-project.org/web/packages/DCGL/index.html>

Additional material

Additional file 1: more parameter testing for gene-level evaluation.

Additional file 2: significance in Link-level evaluation.

Additional file 3: reducing DCL scales.

Additional file 4: Preprocessing GSE3068.

Additional file 5: 337 DCGs identified by DCp.

Additional file 6: 52 T2D-associated genes & 425 rat T2D-related genes.

Additional file 7: DCLs identified by DCE.

Additional file 8: network modules organized by solely correlation reversal.

Acknowledgements and funding

We thank Dr. Christian Herder from German Diabetes Center at Heinrich Heine University Duesseldorf and Dr. Harald Grallert from Institute of Epidemiology, Helmholtz Zentrum München for they compiling the list of 52 T2D-associated genes. We also thank Prof. Michael Brent from Washington University in St. Louis for helpful discussions.

This work was supported by the National Natural Science Foundation of China (31000380, 30800641, 60970050), National Key Technologies R&D Program (2008BAI64B01, 2009AA022710, 2011CB910200), Shanghai Pujiang Program (09PJ1407900), and platform program of Chinese Academy of Sciences (KSCX2-EW-R-04).

Author details

¹Bioinformatics Center, Key Laboratory of Systems Biology, Shanghai Institutes for Biological Sciences, Chinese Academy of Sciences, 320 Yueyang Road, Shanghai 200031, P. R. China. ²Graduate University of the Chinese Academy of Sciences, 19A Yuquanlu, Beijing 100049, P. R. China. ³Shanghai Center for Bioinformation Technology, 100 Qinzhou Road, Shanghai 200235, P. R. China. ⁴School of Life Science and Technology, Tongji University, 1239 Siping Road, Shanghai 200092, P.R. China. ⁵Department of Biostatistics, Vanderbilt University School of Medicine, Nashville, TN 37232, USA. ⁶Center for Human Genetics Research, Vanderbilt University School of Medicine, Nashville, TN 37232, USA.

Authors' contributions

HY came up with the main frameworks of the methods, participated in the computational testing and drafted the manuscript. BHL was in charge of the computational coding and testing, and helped drafting the manuscript. ZQY participated in the method design and helped drafting the manuscript. CL supervised the statistical parts of the methods and modified the manuscript. YYL and YXL conceived of the study, and participated in its design and coordination and modified the manuscript. All authors read and approved the final manuscript.

Received: 23 November 2010 Accepted: 2 August 2011

Published: 2 August 2011

References

1. Rachlin J, Cohen DD, Cantor C, Kasif S: **Biological context networks: a mosaic view of the interactome.** *Mol Syst Biol* 2006, **2**:66.
2. Han JD, Bertin N, Hao T, Goldberg DS, Berriz GF, Zhang LV, Dupuy D, Walhout AJ, Cusick ME, Roth FP, et al: **Evidence for dynamically organized modularity in the yeast protein-protein interaction network.** *Nature* 2004, **430**(6995):88-93.
3. Huang Y, Li H, Hu H, Yan X, Waterman MS, Huang H, Zhou XJ: **Systematic discovery of functional modules and context-specific functional annotation of human genome.** *Bioinformatics* 2007, **23**(13):i222-229.
4. Oldham MC, Horvath S, Geschwind DH: **Conservation and evolution of gene coexpression networks in human and chimpanzee brains.** *Proc Natl Acad Sci USA* 2006, **103**(47):17973-17978.
5. Butte AJ, Tamayo P, Slonim D, Golub TR, Kohane S: **Discovering functional relationships between RNA expression and chemotherapeutic susceptibility using relevance networks.** *PNAS* 2000, **97**(22):12182-12186.
6. Lee HK, Hsu AK, Sajdak J, Qin J, Pavlidis P: **Coexpression analysis of human genes across many microarray data sets.** *Genome Res* 2004, **14**(6):1085-1094.
7. Stuart JM, Segal E, Koller D, Kim SK: **A gene-coexpression network for global discovery of conserved genetic modules.** *Science* 2003, **302**(5643):249-255.

8. Zhou XJ, Kao MC, Huang H, Wong A, Nunez-Iglesias J, Primig M, Aparicio OM, Finch CE, Morgan TE, Wong WH: **Functional annotation and network reconstruction through cross-platform integration of microarray data.** *Nat Biotechnol* 2005, **23**(2):238-243.
9. Obayashi T, Hayashi S, Shibaoka M, Saeki M, Ohta H, Kinoshita K: **COXPRESdb: a database of coexpressed gene networks in mammals.** *Nucleic Acids Res* 2008, **36** Database: D77-82.
10. D'Haeseleer P, Liang S, Somogyi R: **Genetic network inference: from co-expression clustering to reverse engineering.** *Bioinformatics* 2000, **16**(8):707-726.
11. Carter SL, Brechbuhler CM, Griffin M, Bond AT: **Gene co-expression network topology provides a framework for molecular characterization of cellular state.** *Bioinformatics* 2004, **20**(14):2242-2250.
12. Choi JK, Yu U, Yoo OJ, Kim S: **Differential coexpression analysis using microarray data and its application to human cancer.** *Bioinformatics* 2005, **21**(24):4348-4355.
13. de la Fuente A: **From 'differential expression' to 'differential networking' - identification of dysfunctional regulatory networks in diseases.** *Trends Genet* 2010, **26**(7):326-333.
14. Hudson NJ, Reverter A, Dalrymple BP: **A differential wiring analysis of expression data correctly identifies the gene containing the causal mutation.** *PLoS Comput Biol* 2009, **5**(5):e1000382.
15. Reverter A, Ingham A, Lehnert SA, Tan SH, Wang Y, Ratnakumar A, Dalrymple BP: **Simultaneous identification of differential gene expression and connectivity in inflammation, adipogenesis and cancer.** *Bioinformatics* 2006, **22**(19):2396-2404.
16. Mason MJ, Fan G, Plath K, Zhou Q, Horvath S: **Signed weighted gene co-expression network analysis of transcriptional regulation in murine embryonic stem cells.** *BMC Genomics* 2009, **10**:327.
17. Fuller TF, Ghazalpour A, Aten JE, Drake TA, Lusk AJ, Horvath S: **Weighted gene coexpression network analysis strategies applied to mouse weight.** *Mamm Genome* 2007, **18**(6-7):463-472.
18. van Nas A, Guhathakurta D, Wang SS, Yehya N, Horvath S, Zhang B, Ingram-Drake L, Chaudhuri G, Schadt EE, Drake TA, et al: **Elucidating the role of gonadal hormones in sexually dimorphic gene coexpression networks.** *Endocrinology* 2009, **150**(3):1235-1249.
19. Zhang B, Horvath S: **A general framework for weighted gene co-expression network analysis.** *Stat Appl Genet Mol Biol* 2005, **4**, Article17.
20. Watson M: **CoXpress: differential co-expression in gene expression data.** *BMC Bioinformatics* 2006, **7**:509.
21. Cho SB, Kim J, Kim JH: **Identifying set-wise differential co-expression in gene expression microarray data.** *BMC Bioinformatics* 2009, **10**:109.
22. Yu H, Yu F-D, Zhang G-Q, Shen X, Chen Y-Q, Li Y-Y, Li Y-X: **DBH2H: vertebrate head-to-head gene pairs annotated at genomic and post-genomic levels.** *Database* 2009, **2009**:bap006.
23. Li YY, Yu H, Guo ZM, Guo TQ, Tu K, Li YX: **Systematic analysis of head-to-head gene organization: evolutionary conservation and potential biological relevance.** *PLoS Comput Biol* 2006, **2**(7):e74.
24. Zhou Q, Hong Y, Zhan Q, Shen Y, Liu Z: **Role for Kruppel-like factor 4 in determining the outcome of p53 response to DNA damage.** *Cancer Res* 2009, **69**(21):8284-8292.
25. Zhou L, Lopes JE, Chong MM, Ivanov II, Min R, Vitorica GD, Shen Y, Du J, Rubtsov YP, Rudensky AY, et al: **TGF-beta-induced Foxp3 inhibits T(H)17 cell differentiation by antagonizing RORgamma1 function.** *Nature* 2008, **453**(7192):236-240.
26. Liu BH, Yu H, Tu K, Li C, Li YX, Li YY: **DCGL: an R package for identifying differentially coexpressed genes and links from gene expression microarray data.** *Bioinformatics* 2010, **26**(20):2637-2638.
27. Benjamini Y, Hochberg Y: **Controlling the false discovery rate: a practical and powerful approach to multiple testing.** *Journal of the Royal Statistical Society Series B* 1995, **57**:289-300.
28. Mutch DM, Berger A, Mansourian R, Rytz A, Roberts MA: **The limit fold change model: a practical approach for selecting differentially expressed genes from microarray data.** *BMC Bioinformatics* 2002, **3**:17.
29. Zhang B, Li H, Riggins RB, Zhan M, Xuan J, Zhang Z, Hoffman EP, Clarke R, Wang Y: **Differential dependency network analysis to identify condition-specific topological changes in biological networks.** *Bioinformatics* 2009, **25**(4):526-532.
30. Van den Bulcke T, Van Leemput K, Naudts B, van Remortel P, Ma H, Verschoren A, De Moor B, Marchal K: **SynTREN: a generator of synthetic gene expression data for design and analysis of structure learning algorithms.** *BMC Bioinformatics* 2006, **7**:43.
31. Southworth LK, Owen AB, Kim SK: **Aging mice show a decreasing correlation of gene expression within genetic modules.** *PLoS Genet* 2009, **5**(12):e1000776.
32. Hollis-Moffatt JE, Hook SM, Merriman TR: **Colocalization of mouse autoimmune diabetes loci Idd21.1 and Idd21.2 with IDDM6 (human) and Iddm3 (rat).** *Diabetes* 2005, **54**(9):2820-2825.
33. Ghabanbasani MZ, Buysse I, Legius E, Decorte R, Marynen P, Bouillon R, Cassiman JJ: **Possible association of CD3 and CD4 polymorphisms with insulin-dependent diabetes mellitus (IDDM).** *Clin Exp Immunol* 1994, **97**(3):517-521.
34. Sidharta PN, Wagner FD, Bohnemeier H, Jungnik A, Halabi A, Krahenbuhl S, Chadha-Boreham H, Dingemans J: **Pharmacodynamics and pharmacokinetics of the urotensin II receptor antagonist palosuran in macroalbuminuric, diabetic patients.** *Clin Pharmacol Ther* 2006, **80**(3):246-256.
35. Hancock AM, Witonsky DB, Gordon AS, Eshel G, Pritchard JK, Coop G, Di Rienzo A: **Adaptations to climate in candidate genes for common metabolic disorders.** *PLoS Genet* 2008, **4**(2):e32.
36. Willsky GR, Chi LH, Liang Y, Gaile DP, Hu Z, Crans DC: **Diabetes-altered gene expression in rat skeletal muscle corrected by oral administration of vanadyl sulfate.** *Physiol Genomics* 2006, **26**(3):192-201.
37. Prokopenko I, McCarthy MI, Lindgren CM: **Type 2 diabetes: new genes, new understanding.** *Trends Genet* 2008, **24**(12):613-621.
38. Altschuler D, Hirschhorn JN, Klannemark M, Lindgren CM, Vohl MC, Nemesh J, Lane CR, Schaffner SF, Bolk S, Brewer C, et al: **The common PPARgamma Pro12Ala polymorphism is associated with decreased risk of type 2 diabetes.** *Nat Genet* 2000, **26**(1):76-80.
39. Grarup N, Andersen G, Krarup NT, Albrechtsen A, Schmitz O, Jorgensen T, Borch-Johnsen K, Hansen T, Pedersen O: **Association testing of novel type 2 diabetes risk alleles in the JAZF1, CDC123/CAMK1D, TSPAN8, THADA, ADAMTS9, and NOTCH2 loci with insulin release, insulin sensitivity, and obesity in a population-based sample of 4,516 glucose-tolerant middle-aged Danes.** *Diabetes* 2008, **57**(9):2534-2540.
40. Mentzen WJ, Floris M, de la Fuente A: **Dissecting the dynamics of dysregulation of cellular processes in mouse mammary gland tumor.** *BMC Genomics* 2009, **10**:601.
41. Fuente Adl: **From 'differential expression' to 'differential networking' - identification of dysfunctional regulatory networks in diseases.** *Trends Genet* 2010, **26**(7):326-333.
42. Choi Y, Kendziorski C: **Statistical methods for gene set co-expression analysis.** *Bioinformatics* 2009, **25**(21):2780-2786.

doi:10.1186/1471-2105-12-315

Cite this article as: Yu et al.: Link-based quantitative methods to identify differentially coexpressed genes and gene Pairs. *BMC Bioinformatics* 2011 **12**:315.

Submit your next manuscript to BioMed Central and take full advantage of:

- Convenient online submission
- Thorough peer review
- No space constraints or color figure charges
- Immediate publication on acceptance
- Inclusion in PubMed, CAS, Scopus and Google Scholar
- Research which is freely available for redistribution

Submit your manuscript at
www.biomedcentral.com/submit

