



Published in final edited form as:

*J Am Chem Soc.* 2011 October 26; 133(42): 16778–16781. doi:10.1021/ja2075967.

## Diastereocontrol in Asymmetric Allyl-Allyl Cross-Coupling: Stereocontrolled Reaction of Prochiral Allylboronates with Prochiral Allyl Chlorides

Laura A. Brozek, Michael J. Ardolino, and James P. Morken\*

Department of Chemistry, Merkert Chemistry Center, Boston College, Chestnut Hill, MA 02467

### Abstract

The palladium catalyzed allyl-allyl cross-coupling was investigated with substituted prochiral allylic boronates. These reactions deliver products bearing adjacent stereocenters and the issue of diastereocontrol is therefore paramount. Under appropriately modified conditions, this allyl-allyl coupling strategy was found to apply to a range of substrates, generally occurring with high enantioselectivity (92:8 – >99:1 er) and good diastereoselection (4:1 – 14:1 dr).

Vicinal alkenes are common motifs in natural products and in synthetic intermediates. Retrosynthetically, these substructures indicate the Cope rearrangement,<sup>1</sup> a reaction that occurs with predictable relative stereochemical outcomes, but which has not been developed from the standpoint of asymmetric catalysis.<sup>2</sup> A significant hurdle preventing the development of such a process is that the conversion of achiral linear substrates to chiral internally substituted vicinal alkenes (eq. 1, Scheme 1) is not only reversible, but is also thermodynamically disfavored. As an alternative catalytic enantioselective route to chiral vicinal alkenes, we have recently described the catalytic asymmetric allyl-allyl cross-coupling between prochiral allylic electrophiles and unsubstituted allylboronates (Scheme 1, R<sub>2</sub>=H).<sup>3,4,5</sup> This reaction delivers vicinal  $\pi$ - $\pi$  systems by a reaction that appears to proceed by an inner-sphere 3,3' reductive elimination<sup>6</sup> from a bis(allyl)Pd intermediate.<sup>7</sup> In this report, we describe a protocol whereby prochiral  $\gamma$ -substituted allylboronates can participate in cross-coupling reactions with allyl electrophiles. These processes deliver products bearing adjacent tertiary stereocenters and they are not only diastereoselective, but they also occur with excellent levels of enantioselection.<sup>8</sup>

Critical concerns that face development of the above described allyl-allyl coupling reaction are 1) whether 3,3' reductive elimination can facilitate coupling of two hindered tertiary carbon centers or whether coupling of the less hindered 1 and 1' carbons will predominate; 2) whether coupling of the two prochiral carbon atoms will occur with diastereocontrol; and 3) whether the reaction will maintain useful levels of enantiocontrol. Initial experiments focused on the Pd(0) catalyzed reaction between Boc-protected phenyl vinyl carbinol (**A**; X=OBoc) and *cis* crotylB(pin). As depicted in Table 1 (entry 1), in the presence of (*R*)-methoxy(furyl)biphep,<sup>9</sup> this reaction occurred with low efficiency but with a level of enantiocontrol (99:1 er) that far surpasses other allyl-allyl coupling reactions. Notably, this reaction also occurred with excellent regioselectivity (>20:1) and with good levels of diastereocontrol (4:1 *anti:syn*). It was noted that in addition to the allyl-allyl coupling product, this reaction generated significant amounts of ethereal products, presumably

morken@bc.edu.

Supporting Information Available: Characterization and procedures. This information is available free of charge through the internet at <http://pubs.acs.org>.

derived from addition of eliminated butoxide to an intermediate (allyl)Pd complex. Considering that transmetalation with allylmetal reagents often occurs by an  $S_E2'$  pathway,<sup>10</sup> it was thought that the added substitution of the crotyl reagent, relative to the allyl reagent, hinders the transmetalation step. To improve reactivity, CsF was examined as an additive that would facilitate transmetalation<sup>11</sup> and, as shown in entries 2 and 3, this led to improved yields at both 60 °C and at 22 °C. Notably, diastereoselectivity was enhanced when the reaction was conducted at room temperature (entry 3) while still maintaining high enantio- and regioselection. To improve the reaction efficiency further, electrophiles bearing more labile leaving groups were examined. Between acetate, trifluoroacetate and chloride, the chloride leaving group was optimal and, in the presence of 10 equiv. CsF and only 2.5 mol% palladium loading, the substrate was converted to the product in 90% yield and in excellent enantioselectivity (>99:1 er, entry 7). A significant practical feature of the allylic chloride substrates is that they may be generated directly from either internal or terminal allylic alcohols by treatment with  $\text{SOCl}_2$ , and they can be employed directly, without purification.

With an effective protocol in place for enantio- and diastereoselective allyl-allyl coupling reactions, the substrate range of the reaction was examined. As depicted in Table 2, diastereocontrol is generally >5:1 and enantioselection is excellent for most substrates. While *cis* boronates, readily available from diene hydroboration<sup>12</sup> (compounds 1-6) were employed effectively, it was also found that the *trans* boronates react selectively (product 7) and in good yield. Critically, a number of functional groups are tolerated in the allyl boronate reagent, with silyl ethers, esters, imides and pendant alkenes all remaining intact over the course of the reaction. As demonstrated by reactions that deliver compounds **9-12**, substitution on the cinnamyl chloride electrophile is similarly tolerated. A last point of mention, is that the coupling involving non-aromatic electrophiles (compounds **13-15**) did not furnish the product when (*R*)-methoxy(furyl)biphep was employed, however, with QuinoxP\*<sup>13</sup> as the ligand these reactions were effective and furnished the product in outstanding enantiomeric purity.

As mentioned above, both *cis* and *trans* boronates participate in selective allyl-allyl coupling reactions. To assess whether they provide the same experimental outcome, the direct comparison in Scheme 2 was undertaken. Thus *E*-cinnamyl chloride was treated with both *Z* and *E* crotylboronates (**16** and **17**). Under standard reaction conditions, the allyl-allyl coupling products were obtained in near identical yields and levels of selectivity. A mechanism consistent with these observations is depicted in Scheme 3. We propose that, subsequent to transmetalation between the substituted allylboronate (**E**) and an intermediate allyl palladium chloride complex (either **C** or **D**<sup>14</sup>), the boronate-derived allyl fragment is able to undergo isomerization (minimizing steric effects to give **G**) prior to stereochemistry-determining reductive elimination to give **H**.

To gain a sense for the stereocontrol mechanisms that underlie this and other allyl-allyl coupling reactions, the crystal structure of (*R*)-methoxy(furyl)biphep complexed to  $\text{PdCl}_2$  was determined. As depicted in Figure 1, the *R* configuration of the biaryl ligand causes the cyclic chelate involving Pd to adopt the  $\lambda$  skew conformation with the furyl rings adopting pseudoaxial and pseudoequatorial positions about the seven-membered ring. The pseudo-equatorial furyl rings impinge on the Pd square plane in a manner that causes the chlorine atoms to cant above and below the plane and this is an important feature with respect to stereoinduction in allyl-allyl couplings (*vide infra*).

In accord with experiments above, we proposed that reductive elimination from bis(*trans*- $\eta^1$ -allyl)Pd complex **G** (Scheme 3) is the stereochemistry-determining step and that this elimination occurs in a 3,3' mode. Computational studies by Echavarren<sup>6b</sup> conclude that

such reactions occur through chair-like transition structures. Collectively, this data suggests that a favored reaction path is that depicted in Figure 2. In this model, the  $\eta^1$ -allyl ligands are each canted in a manner that minimizes interaction with the pseudoequatorial furyl rings of the ligand. This causes one chair conformer to be favored (shown) over the other and leads to high asymmetric induction.

In conclusion, we have described a simple but highly effective method for establishing vicinal stereocenters in a catalytic asymmetric fashion. Analysis of ligand-metal structures allows for straightforward predictions of the stereochemical outcome of these reactions.

## Supplementary Material

Refer to Web version on PubMed Central for supplementary material.

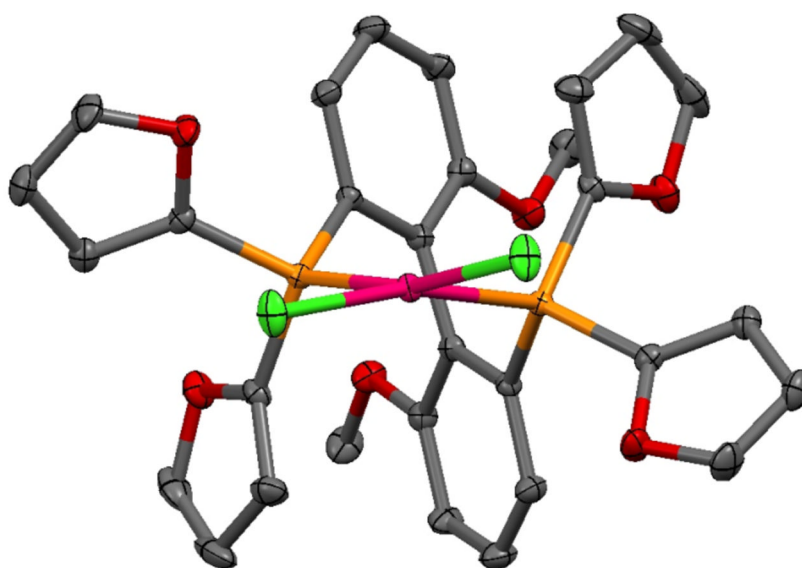
## Acknowledgments

Support by the NIGMS (GM-64451) and the NSF (DBI-0619576, BC Mass. Spec. Center; CHE-0923264, BC X-ray Facility) is gratefully acknowledged. We thank AllyChem for a donation of  $B_2(\text{pin})_2$  and BASF for pinBH, both of which are used in the construction of allylboronates. We thank Dr. Bo Li of Boston College for crystallography.

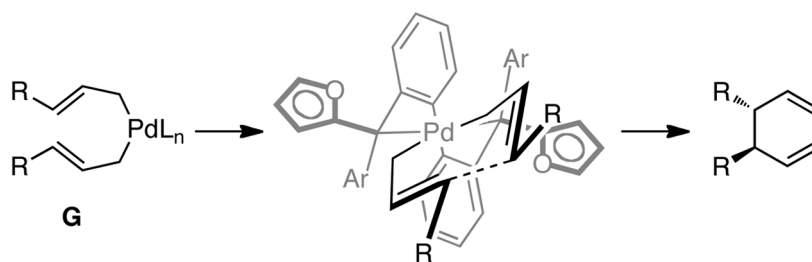
## References

1. Review: Hill RK. *Comp Org Syn*. 1991; 5:785.
2. Review on catalysis of the Cope rearrangement: (a) Overman LE. *Angew Chem Int Ed Engl*. 1984; 23:579. Selected primary references, Pd(II) catalysis: (b) Overman LE, Knoll FM. *J Am Chem Soc*. 1980; 102:865. (c) Hamilton R, Mitchell TRB, Rooney JJ. *Chem Commun*. 1981:456. (d) Bluthé N, Malacria M, Gore J. *Tetrahedron Lett*. 1983; 24:1157. (e) Overman LE, Renaldo AF. *Tetrahedron Lett*. 1983; 24:3757. (f) Overman LE, Renaldo AF. *J Am Chem Soc*. 1990; 112:3945. (g) Overman LE, Jacobsen EJ. *J Am Chem Soc*. 1982; 104:7225. Pd(0) catalysis: (h) Nakamura H, Iwama H, Ito M, Yamamoto Y. *J Am Chem Soc*. 1999; 121:10850. Alumina catalysis: (i) Lutz RP, Berg HA, Wang PJ. *J Org Chem*. 1976; 41:2048.
3. (a) Zhang P, Brozek LA, Morken JP. *J Am Chem Soc*. 2010; 132:10686. [PubMed: 20681700] (b) Zhang PA, Le H, Kyne RE, Morken JP. *J Am Chem Soc*. 2011; 133:9716. [PubMed: 21648464]
4. For linear selective allyl-allyl couplings: Allylstannanes: (a) Trost BM, Keinan E. *Tetrahedron Lett*. 1980; 21:2595. (b) Godschalk J, Stille JK. *Tetrahedron Lett*. 1980; 21:2599. (c) Keinan E, Peretz M. *J Org Chem*. 1983; 48:5302. (d) Trost BM, Pietrusiewicz KM. *Tetrahedron Lett*. 1985; 26:4039. (e) Goliaszewski A, Schwartz J. *Tetrahedron*. 1985; 41:5779. (f) Goliaszewski A, Schwartz J. *Organometallics*. 1985; 4:417. (g) Keinan E, Bosch E. *J Org Chem*. 1986; 51:4006. (h) Cuerva JM, Gómez-Bengoa E, Méndez M, Echavarren AM. *J Org Chem*. 1997; 62:7540. (i) van Heerden FR, Huyser JJ, Williams DBG, Holzappel CW. *Tetrahedron Lett*. 1998; 39:5281. (j) Nakamura H, Bao M, Yamamoto Y. *Angew Chem Int Ed*. 2001; 40:3208. (k) Méndez M, Cuerva JM, Gómez-Bengoa E, Cárdenas DJ, Echavarren AM. *Chem Eur J*. 2002; 8:3620. Homoallylic alcohols: (l) Sumida Y, Hayashi S, Hirano K, Yorimitsu H, Oshima K. *Org Lett*. 2008; 10:1629. [PubMed: 18355073] Allyl boronates: (m) Flegeau EF, Schneider U, Kobayashi S. *Chem Eur J*. 2009; 15:12247. (n) Jiménez-Aquino A, Flegeau EF, Schneider U, Kobayashi S. *Chem Commun*. 2011; 47:9456.
5. For an alternate catalytic enantioselective construction of vicinal alkene structures, see: (a) Davies HML, Jin Q. *J Am Chem Soc*. 2004; 126:10862. [PubMed: 15339169] (b) Davies HML, Jin Q. *Proc Nat Acad Sci USA*. 2004; 101:5472. [PubMed: 15024094] (c) Hansen JH, Gregg TM, Ovalles SR, Lian Y, Autschbach J, Davies HML. *J Am Chem Soc*. 2011; 133:5076. [PubMed: 21384883]
6. (a) Méndez M, Cuerva JM, Gómez-Bengoa E, Cárdenas DJ, Echavarren AM. *Chem Eur J*. 2002; 8:3620. (b) Cárdenas DJ, Echavarren AM. *New J Chem*. 2004; 28:338. (c) Perez-Rodríguez M, Braga AAC, de Lera AR, Maseras F, Alvarez R, Espinet P. *Organometallics*. 2010; 29:4983. For a related experimentally observable  $^1$ -allyl- $^1$ -carboxylate, see: (d) Sherden NH, Behenna DC, Virgil SC, Stoltz BM. *Angew Chem, Int Ed*. 2009; 48:6840.

7. For related inner sphere reductive elimination of bis(allyls) or their equivalents, see ref. 3 and: (a) Goliaszewski A, Schwartz J. *J Am Chem Soc.* 1984; 106:5028.(b) Keith JA, Behenna DC, Mohr JT, Ma S, Marinescu SC, Oxgaard J, Stoltz BM, Goddard WA III. *J Am Chem Soc.* 2007; 129:11876. [PubMed: 17824701] (c) Sieber JD, Liu S, Morken JP. *J Am Chem Soc.* 2007; 129:2214. [PubMed: 17266312] (d) Sieber JD, Morken JP. *J Am Chem Soc.* 2008; 130:4978. [PubMed: 18338891] (e) Zhang P, Morken JP. *J Am Chem Soc.* 2009; 131:12550. [PubMed: 19678681] (f) Chen JP, Peng Q, Lei BL, Hou XL, Wu YD. *J Am Chem Soc.* 2011; 133:14180. [PubMed: 21827171]
8. For Pd catalyzed diastereo- and enantioselective allylic substitution, see: (a) Trost BM, Miller JR, Hoffmann CM. *J Am Chem Soc.* 2011; 133:8165. [PubMed: 21534526] (b) Chen JP, Ding CH, Liu W, Hou XL, Dai LX. *J Am Chem Soc.* 2010; 132:15493. [PubMed: 20945898] (c) Zheng WH, Zheng BH, Zhang Y, Hou XL. *J Am Chem Soc.* 2007; 129:7718. [PubMed: 17539637]
9. (a) Broger EA, Foricher J, Heiser B, Schmid R. US Patent. 5,274,125. 1993 For reviews of furyl phosphines, see: (b) Farina V. *Pure & Appl Chem.* 1996; 68:73.(c) Anderson NG, Keay BA. *Chem Rev.* 2001; 101:997. [PubMed: 11709863]
10. (a) Yamamoto Y, Yatagai H, Maruyama K. *J Am Chem Soc.* 1981; 103:1969.(b) Hayashi T, Konishi M, Kumada M. *J Am Chem Soc.* 1982; 104:4963.(c) Hayashi T, Kabeta K, Yamamoto T, Tamao K, Kumada M. *Tetrahedron Lett.* 1983; 24:5661.(d) Wickham G, Kitching W. *J Org Chem.* 1983; 48:614.(e) Buckle MJC, Fleming I, Gil S, Pang KLC. *Org, Biomol Chem.* 2004; 2:749. [PubMed: 14985816] and references cited therein. (f) Denmark SE, Werner NS. *J Am Chem Soc.* 2010; 132:3612. [PubMed: 20163185]
11. Wright SW, Hageman DL, McClure LD. *J Org Chem.* 1994; 59:6095.
12. Ely RO, Morken JP. *J Am Chem Soc.* 2010; 132:2534. [PubMed: 20136142]
13. Imamoto T, Sugita K, Yoshida K. *J Am Chem Soc.* 1995; 127:11934. [PubMed: 16117520]
14. For the  $\eta^1$  structure of (allyl)ClPdL<sub>2</sub>, see: Cantat T, Génin E, Giroud C, Meyer G, Jutland A. *J Organomet Chem.* 2003; 687:365.

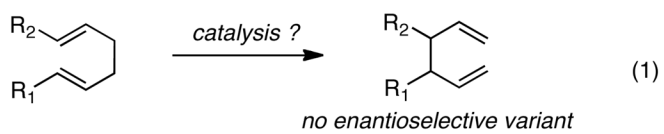


**Figure 1.**  
X-ray structure of (*R*)-methoxy(furyl)biphep•PdCl<sub>2</sub>. Elipsoids at 50% probability level.

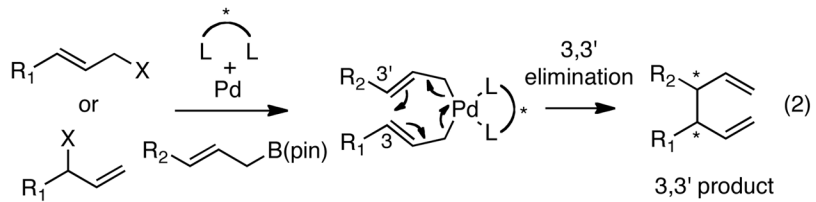


**Figure 2.**  
Model for stereochemical outcome in allyl-allyl couplings.

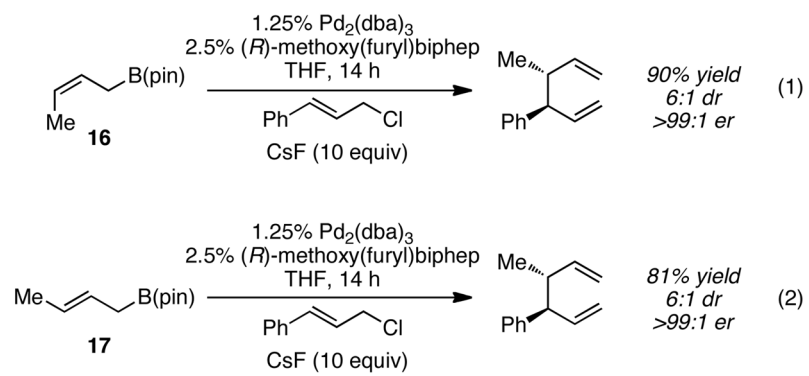
Cope rearrangement:



Alternative:

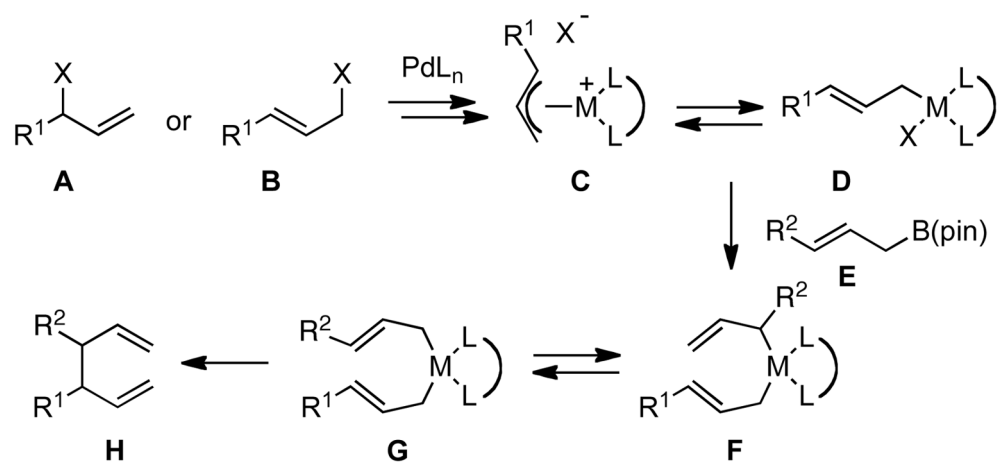


Scheme 1.



Scheme 2.





Scheme 3.

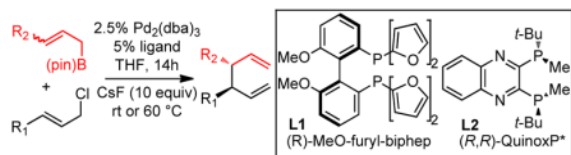
Table 1

Optimization of Allyl-Allyl Cross-Coupling with CrotylB(pin)<sup>a</sup>

entry	E <sup>+</sup> (X)	CsF equiv	temp	%Pd	dr	% yield
1	A (OBoc)	none	60	10	4:1	25
2	A (OBoc)	3	60	10	4:1	61
3	A (OBoc)	3	rt	10	6:1	50
4	A (OAc)	3	rt	10	5:1	26
5	A (OTFA)	3	rt	10	6:1	61
6	B (Cl)	3	rt	2.5	6:1	72
7	B (Cl)	10	rt	2.5	6:1	90

<sup>a</sup>Reactions conducted for 14 h at 22 °C with 1:1 L1:Pd(0) and employ 1.2 equiv. of the allylboronate relative to the allylic chloride. Yield refers to isolated of the diastereomer mixture. Diastereoselectivity determined by <sup>1</sup>H NMR analysis and enantioselectivity determined by GC analysis on a chiral stationary phase.

Table 2

Catalytic Diastereo- and Enantioselective Allyl-Allyl Cross-Coupling<sup>a</sup>

 <b>1</b> <b>L1</b> , 87% yield (10:1 dr) >99:1 er	 <b>2</b> <b>L1</b> , 76% yield (5:1 dr) >99:1 er	 <b>3</b> <b>L1</b> , 77% yield (10:1 dr) >99:1 er
 <b>4</b> <b>L1</b> , 71% yield (7:1 dr) >99:1 er	 <b>5</b> <b>L1</b> , 54% yield (7:1 dr) 92:8 er	 <b>6</b> <b>L1</b> , 81% yield (10:1 dr) >99:1 er
 <b>7<sup>b,c</sup></b> <b>L1</b> , 80% yield (14:1 dr) 97:3 er	 <b>8<sup>d</sup></b> <b>L1</b> , 90% yield (6:1 dr) >99:1 er	 <b>9<sup>d</sup></b> <b>L1</b> , 96% yield (5:1 dr) >99:1 er
 <b>10<sup>d</sup></b> <b>L1</b> , 93% yield (6:1 dr) >99:1 er	 <b>11<sup>b</sup></b> <b>L1</b> , 84% yield (5:1 dr) 99:1 er	 <b>12<sup>b</sup></b> <b>L1</b> , 84% yield (4:1 dr) 96:4 er
 <b>13<sup>e</sup></b> <b>L2</b> , 64% yield (7:1 dr) 96:4 er	 <b>14<sup>e</sup></b> <b>L2</b> , 67% yield (7:1 dr) 95:5 er	 <b>15<sup>b,d</sup></b> <b>L2</b> , 51% yield (6:1 dr) 97:3 er

<sup>a</sup> *E*-Allylic boronate employed for entries 5 and 7, *Z* isomer used for others. Unless otherwise noted, reactions conducted for 14 h at 22 °C and employ 1.2 equiv. of the allyl boronate relative to the allylic chloride. Yield refers to isolated of the diastereomer mixture and is an average of two experiments. Diastereoselectivity determined by GC or <sup>1</sup>H NMR analysis; enantioselection determined by GC, SFC, or HPLC analysis on a chiral stationary phase. Unless otherwise noted, regioselection >20:1.

<sup>b</sup> Reaction at 60 °C.

<sup>c</sup> Isolated material contains 40% of regioisomeric products.

<sup>d</sup> Reaction employed 2.5% Pd<sub>2</sub>dba<sub>3</sub> and 5% **L1**.

<sup>e</sup> Reaction at 60 °C in 5:1 THF/H<sub>2</sub>O.