

Research

Open Access

Casein haplotypes and their association with milk production traits in Norwegian Red cattle

Heidi Nilsen¹, Hanne Gro Olsen², Ben Hayes^{2,4}, Erling Sehested³, Morten Svendsen³, Torfinn Nome², Theo Meuwissen^{1,2} and Sigbjørn Lien*^{1,2}

Address: ¹Department of Animal and Aquacultural Sciences, Norwegian University of Life Sciences, Box 5003, N-1432 Aas, Norway, ²Centre for Integrative Genetics, Norwegian University of Life Sciences, Box 5003, N-1432 Aas, Norway, ³GENO Breeding and AI association, Norwegian University of Life Sciences, Box 5003, N-1432 Aas, Norway and ⁴Animal Genetics and Genomics, Primary Industries Research Victoria, 475 Mickleham Rd, Attwood, Victoria, 3049, Australia

Email: Heidi Nilsen - heidi.nilsen@umb.no; Hanne Gro Olsen - hanne-gro.olsen@umb.no; Ben Hayes - Ben.Hayes@dpi.vic.gov.au; Erling Sehested - erling.sehested@geno.no; Morten Svendsen - morten.svendsen@umb.no; Torfinn Nome - torfinn.nome@umb.no; Theo Meuwissen - theo.meuwissen@umb.no; Sigbjørn Lien* - sigbjorn.lien@umb.no

* Corresponding author

Published: 20 February 2009

Received: 29 January 2009

Genetics Selection Evolution 2009, 41:24 doi:10.1186/1297-9686-41-24

Accepted: 20 February 2009

This article is available from: <http://www.gsejournal.org/content/41/1/24>

© 2009 Nilsen et al; licensee BioMed Central Ltd.

This is an Open Access article distributed under the terms of the Creative Commons Attribution License (<http://creativecommons.org/licenses/by/2.0>), which permits unrestricted use, distribution, and reproduction in any medium, provided the original work is properly cited.

Abstract

A high resolution SNP map was constructed for the bovine casein region to identify haplotype structures and study associations with milk traits in Norwegian Red cattle. Our analyses suggest separation of the casein cluster into two haplotype blocks, one consisting of the *CSN1S1*, *CSN2* and *CSN1S2* genes and another one consisting of the *CSN3* gene. Highly significant associations with both protein and milk yield were found for both single SNPs and haplotypes within the *CSN1S1*-*CSN2*-*CSN1S2* haplotype block. In contrast, no significant association was found for single SNPs or haplotypes within the *CSN3* block. Our results point towards *CSN2* and *CSN1S2* as the most likely loci harbouring the underlying causative DNA variation. In our study, the most significant results were found for the SNP *CSN2_67* with the C allele consistently associated with both higher protein and milk yields. *CSN2_67* calls a C to an A substitution at codon 67 in β -casein gene resulting in histidine replacing proline in the amino acid sequence. This polymorphism determines the protein variants A1/B (*CSN2_67* A allele) versus A2/A3 (*CSN2_67* C allele). Other studies have suggested that a high consumption of A1/B milk may affect human health by increasing the risk of diabetes and heart diseases. Altogether these results argue for an increase in the frequency of the *CSN2_67* C allele or haplotypes containing this allele in the Norwegian Red cattle population by selective breeding.

Introduction

Several studies have reported the existence of QTL affecting milk production traits on bovine chromosome 6 (BTA6) [1,2] (summarized at <http://genomes.sapac.edu.au/bovineqtl/> and http://www.vet.sci.usyd.edu.au/reprogen/QTL_Map/). Two distinct regions on this chromosome affect milk traits (including

protein yield, protein percentage, fat yield, fat percentage and milk yield). One QTL affecting protein and fat percentage has been positioned in a narrow region of 420 kb [3] and a putative functional polymorphism in the *ABCG2* gene underlying the QTL has been suggested [4,5]. The second region on BTA6 associated with milk traits maps to the casein cluster [e.g. [6-11]]. The casein cluster

is composed of four genes; α_{s1} -, β -, α_{s2} - and κ -casein (*CSN1S1*, *CSN2*, *CSN1S2* and *CSN3*, respectively) producing approximately 80 percent of the protein content of cow's milk [12]. The four casein genes have been mapped in the order *CSN1S1-CSN2-CSN1S2-CSN3* to bovine chromosome 6 (BTA6) at q31-33 by *in situ* hybridisation [13,14].

Several polymorphisms have been detected in the open reading frame (reviewed by [12]) and in noncoding regions such as the 5'-flanking region of the casein genes [15,16]. The most common genetic variants in western dairy breeds are α_{s1} -casein B (here denoted *CSN1S1_192*A*) and C (*CSN1S1_192*G*), β -casein A1 (*CSN2_67*A*), A2 (*CSN2_67*C*) and B (*CSN2_122*C*), and κ -casein A (*CSN3_136*C*), B (*CSN3_136*T*) and E (*CSN3_155*G*).

In the present study, we have constructed a dense SNP map in the casein region. The map facilitates accurate haplotype construction and was used for comprehensive association studies in Norwegian Red cattle.

Methods

Animals in the QTL study

All animals in the study belonged to the Norwegian Red cattle breed. For the chromosome wide QTL scan, animals were organized in a granddaughter design consisting of 18 elite sire families with a total of 716 sons and 507,000 granddaughters. To fine-map QTL in the casein region, the animal data was expanded to 31 elite sire families with a total of 1112 sons, ranging from 23 to 70 sons for the smallest and largest families, respectively. The total number of daughters in this analysis was approximately 1.9 million, with an average of 1670 daughters per son. The families were chosen based on sufficiently large family sizes and/or availability of trait data. The pedigree of each animal in the study was traced back as far as known. Daughter yield deviations (DYDs) of the sons were used as performance information in the analyses. The DYDs for milk production traits [protein percentage (P%), protein yield (PY), milk yield (MY), fat percentage (F%) and fat yield (FY)] were available from the national genetic evaluation carried out by GENO Breeding and AI Association, and evaluated using a BLUP animal model [17].

Marker map

For the initial QTL scan, we used a map consisting of 399 SNPs covering the entire BTA6 [18]. To fine-map QTL, we constructed a dense marker map consisting of 73 SNPs in and around the casein region on BTA6, covering approximately 750 kb. Fifty-four of the 73 SNPs in the map were detected by PCR resequencing of promoters and exon regions of all four casein genes (*CSN1S1*, *CSN2*, *CSN1S2* and *CSN3*), nine SNPs were available from [19], whereas

ten SNPs were selected from the Bovine Genome Sequencing Project [20]. Physical distances between markers were determined from one single scaffold, NW_001495211, available from the latest assembly of the bovine genome Btau_4.0 [20]. The average distance between SNPs was 10,462 bp (ranging from 7 to 302,143 bp). A description of the SNPs, including accession numbers in dbSNP, assays for genotyping on the MassARRAY system (Sequenom, San Diego, USA), marker allele frequencies and predicted physical distances between markers can be found in Additional file 1.

QTL analysis

A combined linkage and linkage disequilibrium (LDLA) method [5] was used to analyze milk production traits based on the information on markers from the 399-marker map described in [18] and a dense SNP map (73 markers) constructed for the casein region (see Additional file 1). For the midpoint of each marker bracket, the log-likelihood of a model containing the QTL ($\text{LogL}(G_i)$) was calculated as well as a model fitting only background genes ($\text{LogL}(0)$) using the ASREML package [21]. Our test statistic, LogL difference, was then calculated as the difference in log-likelihood between the first and the second model. This LogL difference times 2 is equal to the Likelihood Ratio Test-statistic (LRT) of [22]. According to Baret and coworkers, the distribution of the LRT under the null hypothesis can be seen as a mixture of two chi square distributions with 0 and 1 degree of freedom (df), respectively. Significance levels for the LRT are then found from a chi square distribution with 1 df but doubling the probability levels [22]. Then, to obtain a significance level of 0.0005, the LRT value corresponding to a chi square distribution with 1 df and $P = 0.001$ is utilized. This LRT value is 10.8, and thus the corresponding LogL difference must be 5.4 or higher to achieve a significance level of 0.0005.

SNP association tests

DYDs of the sons were used as performance information in the analyses. The model fitted to the performance information for each trait and each SNP was: $DYD_i = \mu + s_i + x_i b + a_i + e_i$, where DYD_i is performance of son i , μ is the overall mean, s_i is a fixed effect of sire of son i , x_i is 0 if son i is homozygous 1 1 (e.g. AA); 1 if son i is heterozygous 1 2 (e.g. AT or TA); or 2 if son i is homozygous 2 2 (e.g. TT), b is the effect of the SNP, a_i is a polygenic effect of son i , and e_i is a residual effect. For each single marker, the log-likelihood of a model containing the SNP effect ($\text{LogL}(H1)$) was calculated as well as a model without this SNP effect ($\text{LogL}(H0)$) using the ASREML package [21]. Our test statistic, LogL difference, was then calculated as the difference in LogL between the first and the second model as described above. A SNP effect was regarded significant if the LogL difference exceeded 5.4.

Additionally, multiple SNP association tests were carried out for the most significant markers from the single SNP association test. The tests were implemented by fitting a fixed effect of the SNP in the above-mentioned model and repeating the analyses for the most significant SNPs in turn. Test statistics for the analyses were as described above.

LD and haplotype block structure of the casein region

An analysis package, CRIHAP, was developed for determining haplotypic phases and imputing missing genotypes for all individuals (Nome and Lien, unpublished). The programs are based on both linkage and linkage disequilibrium information generated by the CRI-MAP 2.4 [23] and PHASE version 2.1 [24,25] programs. Map information and genotypes for all animals were imported into the Haploview program [26] to calculate LD (r^2) between markers.

Haplotype analysis

Haplotype blocks were constructed for the casein loci *CSN1S1*, *CSN2* and *CSN1S2* for which we found highly significant brackets or single SNPs associated with protein yield. A script was made to deduce maternal and paternal haplotypes for all individuals and different haplotype blocks using haplotypic phases from the CRIHAP program package. As for the single SNP analyses, DYDs of the sons were used as performance information in the analy-

ses. The model fitted to the DYDs, for each trait and each haplotype, was $DYD_i = \mu + s_i + x_i b + a_i + e_i$, where DYD_i is the performance of son i , μ is the overall mean, s_i is a fixed effect of sire of son i , x_i is a row-vector indicating which haplotypes and how many copies are carried by the son; and b is a column indicating the random effects of the haplotypes; a_i is a random polygenic effect of son i , and e_i is a residual effect. The test statistic (LogL difference) was found as previously described for the single SNP association test. Phenotypic standard deviations for protein and milk yield were 36.75 kg and 1137.79 kg, respectively. These deviations were used to scale the haplotype effects into phenotypic standard deviations for each of the traits for a standardised presentation.

Results

Chromosome wide QTL scan

Results of the initial QTL scan for milk yield, protein yield, protein percentage, fat yield and fat percentage (LDLA analysis using the 399-marker map) are shown in Figure 1. For details about the markers, see Table S1 in Nilsen *et al.* [18] or <http://cilit.umb.no/maps/>. The analysis reveals highly significant results (LogL difference > 5.4, $P < 0.0005$) mainly in two different regions. Milk yield, protein yield and especially fat and protein percentages show highly significant results in the region between approximately 25 and 45 Mb. This QTL, previously fine-mapped in Norwegian Red cattle [3], is potentially caused by a pol-

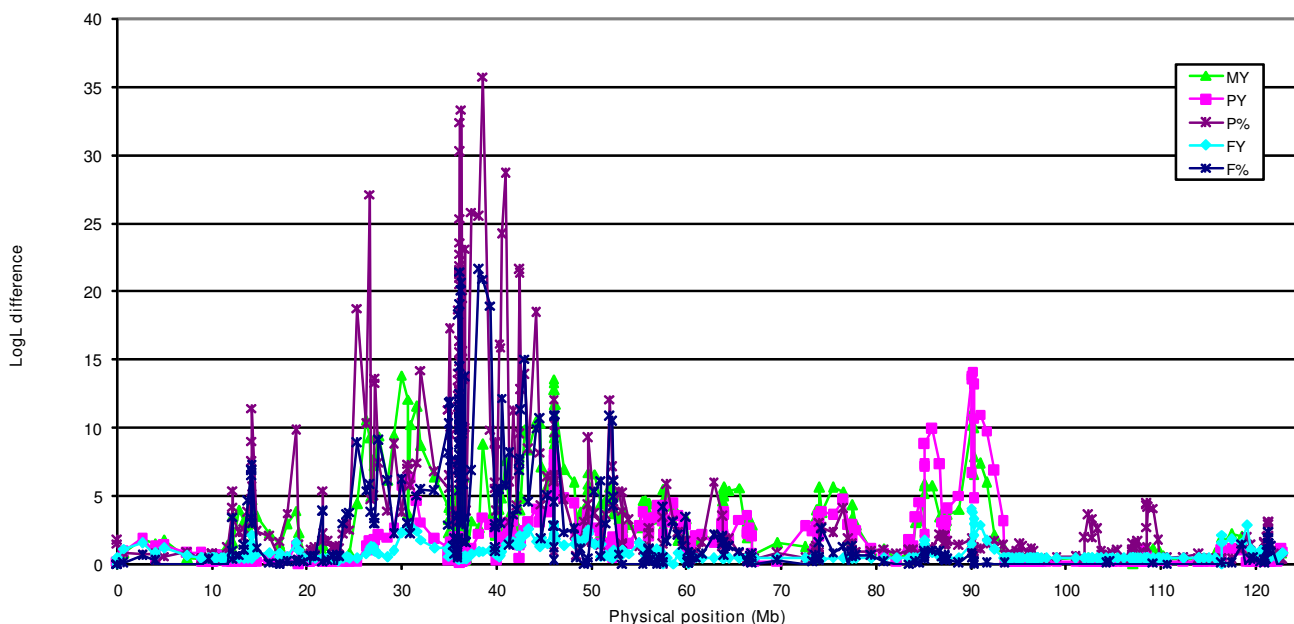


Figure 1
LDLA QTL analysis for milk yield (MY), protein yield (PY), protein percentage (P%), fat yield (FY), and fat percentage (F%) using the 399-marker map of Nilsen *et al.* [18]. Points illustrate bracket midpoints; the physical distance is scaled in Mb and the y-axis denotes the LogL differences.

ymorphism in the *ABCG2* gene [4,5]. Additionally, highly significant results were found for milk and protein yields in the casein cluster region at approximately 90 Mb. The results from the initial scan were followed up by LDLA analyses in a high-resolution map constructed for the casein region (73 SNPs) and using an extended number of families. The result of this analysis for protein yield and percentage are shown in Figure 2 (for details about the markers, see Additional file 1). The LogL difference for protein yield was found for the interval between the markers *BTA6-02720* and *CSN1S1-Prom_175* (LogL difference = 19.5), but several additional significant results appear for numerous marker brackets in *CSN2* and *CSN1S2*. No significant result was found for marker brackets in the

CSN3 gene. The interval between *CSN1S1_192* and *CSN1S1-BMC_17969* was the only one with significant LogL difference for protein percentage (LogL difference = 5.6).

SNP association tests

Data was also analysed for association between single SNPs and DYDs for protein yield and milk yield. Highly significant results were found for a number of SNPs in *CSN2* and *CSN1S2* for both protein yield (PY) and milk yield (MY) (Figure 3 and Figure 4, respectively). SNPs with the highest LogL differences were *CSN2-BMC_9215* and *CSN2_67* for both traits (LogL difference = 26.4 for PY

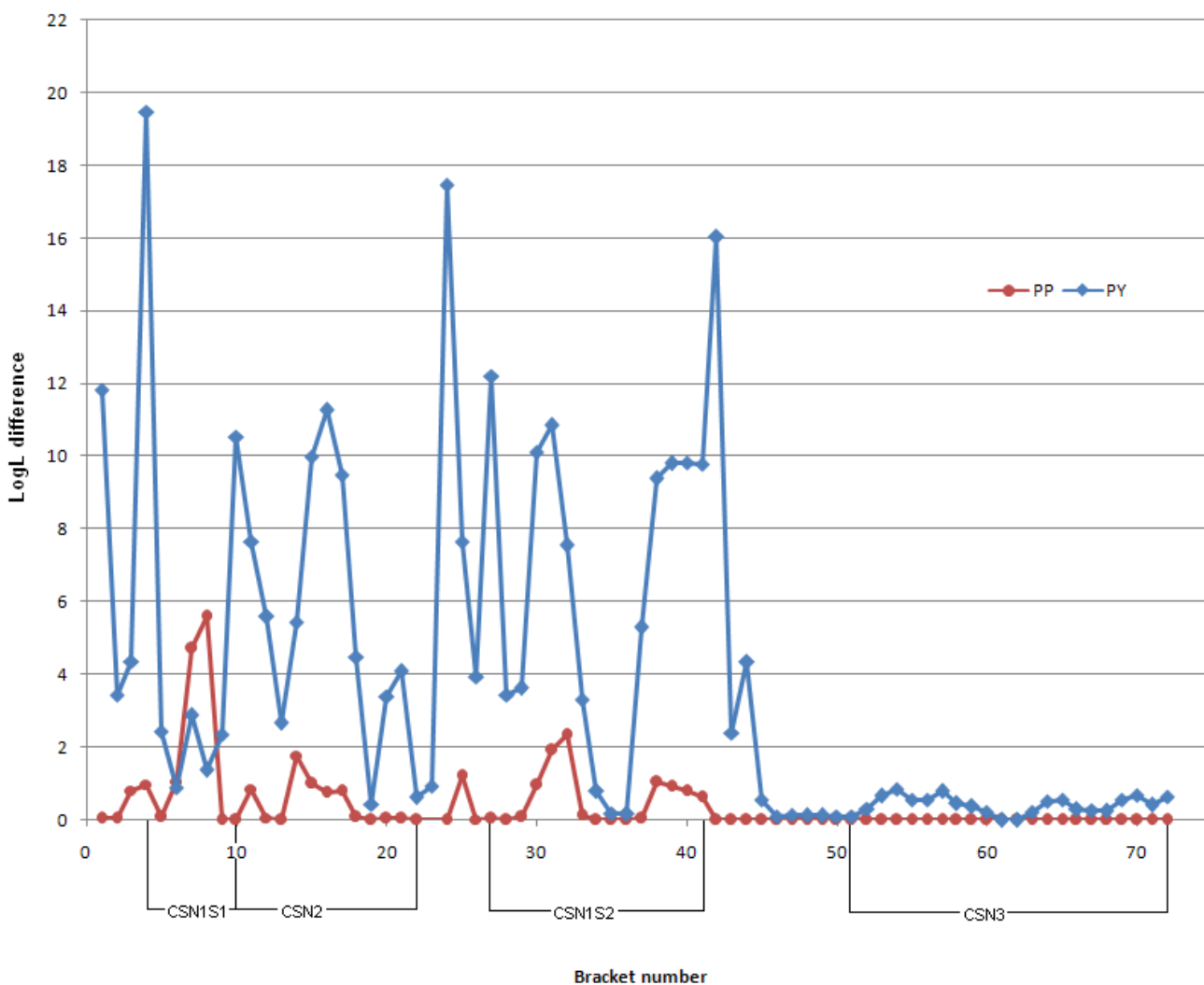


Figure 2
LDLA QTL analysis for protein percentage (P%) and protein yield (PY) in the interval between marker BTA6-107923 and BTA6-09701 (markers in NW_001495211). For better readability, the x-axis has been presented as bracket numbers where points illustrate bracket midpoints; the y-axis reflects the LogL differences.

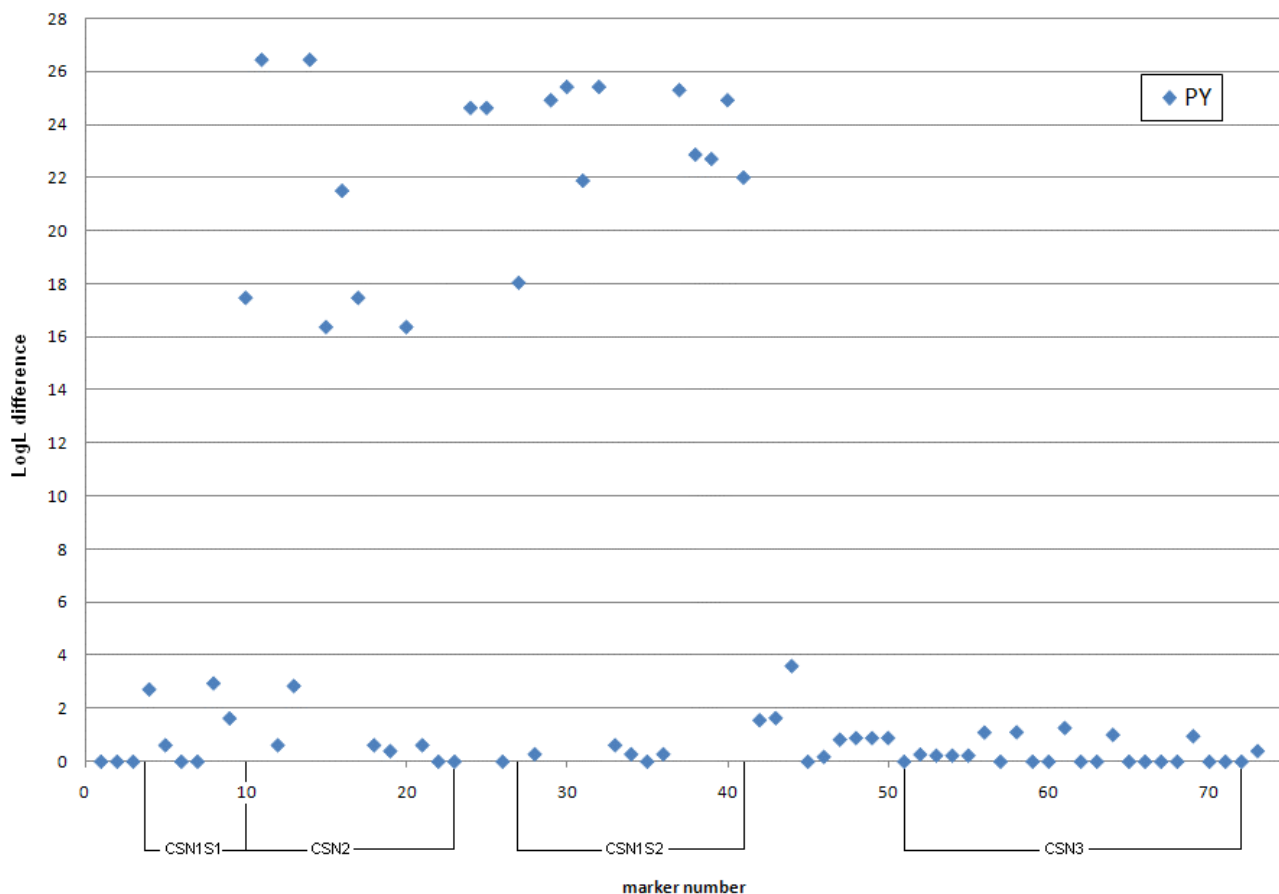


Figure 3
Single SNP association test results for protein yield. The x-axis denotes marker number and the y-axis the LogL differences.

and 15.7 for MY for both SNPs), in addition to *CSN1S2-BMC_17192* for MY (LogL difference = 15.8).

In most cases when fitting an effect of the most significant SNPs in a multiple SNP association test it highly reduced LogL differences for the other SNPs in the region. The most striking results were found for SNPs *CSN2-BMC_9215* and *CSN2_67*. These two SNPs are in complete LD with each other and both removed almost all peaks for other markers in the region. The result for *CSN_67* is presented in Figure 5. In accordance with the LDLA results no significant association was found between SNPs in the *CSN3* gene and DYDs for PY.

Extent of LD and haplotype reconstruction

The dense SNP map in the casein region made it possible to construct haplotypes within the casein loci. Such an analysis revealed five haplotypes for *CSN1S1*, seven haplotypes for *CSN2* and six haplotypes for *CSN1S2* (Figure 6). LD between pairs of loci varied from complete disequi-

librium to almost no disequilibrium, and was much higher between SNPs in *CSN2* and *CSN1S2* than between SNPs in any other gene (Figure 7). The extent of LD allowed us to construct an extended haplotype block covering all three genes, creating 12 haplotypes with a population frequency above 0.9% (Additional file 2).

Haplotype effects

LogL differences for the four individual casein loci for PY and MY are shown in Table 1. As shown in Figure 8 and Figure 9, respectively, highly significant results were found in the *CSN2* and *CSN1S2* genes for both PY and MY. Six haplotypes were identified for *CSN2*. Estimation of the effect of haplotypes within loci on PY and MY revealed two haplotypes that tend to be negative (haplotype 2 and 5) and four haplotypes that tend to be positive (haplotypes 1, 3, 4 and 6) for *CSN2* (Figure 8). For *CSN1S2*, we detected three haplotypes that are negative for both MY and PY (haplotypes 2, 3 and 4) (Figure 9). In contrast,

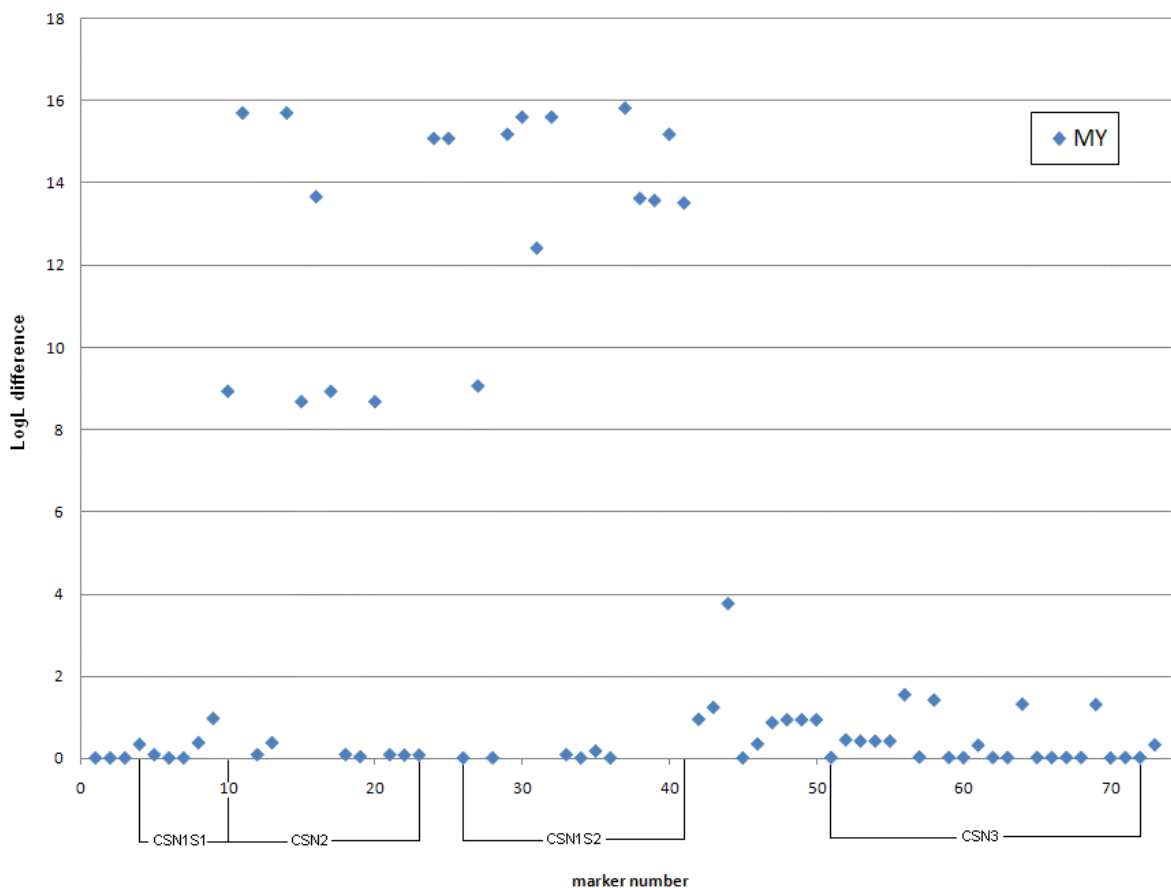


Figure 4
Single SNP association test results for milk yield. The x-axis denotes marker number and the y-axis the LogL differences.

both haplotypes 1 and 5 seem to be positive for both MY and PY. In addition, LogL differences for the extended haplotype block covering *CSN1S1*-*CSN2*-*CSN1S2* were highly significant for both PY and MY (Table 1). The effects of the 12 haplotypes created for this block are shown in Figure 10. Effects of haplotypes for MY and PY were in the same direction for both traits, with four haplotypes tending to be negative (haplotypes 2, 3, 6 and 7) and eight haplotypes that seem to be positive for both traits.

Discussion

Our analysis of a dense SNP map in the casein region using the LDLA methodology revealed a high number of significant marker brackets for protein yield especially in *CSN2* and *CSN1S2* (Figure 1 and Figure 2). The fact that LDLA could not pin point a single marker bracket harbouring the QTL can probably be explained by a high

degree of LD between the markers in the region. Analysis of the extent of LD in the region showed high LD in two segments (one segment consisting of *CSN1S1*, *CSN2* and *CSN1S2* and another one consisting of *CSN3*) (Figure 7). The two segments seem to be broken by a possible recombinant hotspot. Nilsen *et al.* [27] have reported evidence for a recombination hotspot between *CSN1S2* and *CSN3*, confirming these findings. Hayes *et al.* [28] have also reported a recombination hotspot in the casein region in goat. Despite the fact that all four casein genes are coordinately expressed at high levels in a tissue- and stage-specific fashion, the κ -casein gene is not evolutionarily related to the three other casein genes (α_{s1} , β and α_{s2}) [29]. The calcium-sensitive caseins (α_{s1} , β and α_{s2}) have originated from a common ancestral gene via intergenic and intragenic duplications [30] and share common regulatory motifs [31], whereas it has been suggested that the κ -casein is related to fibrinogens on the basis of amino

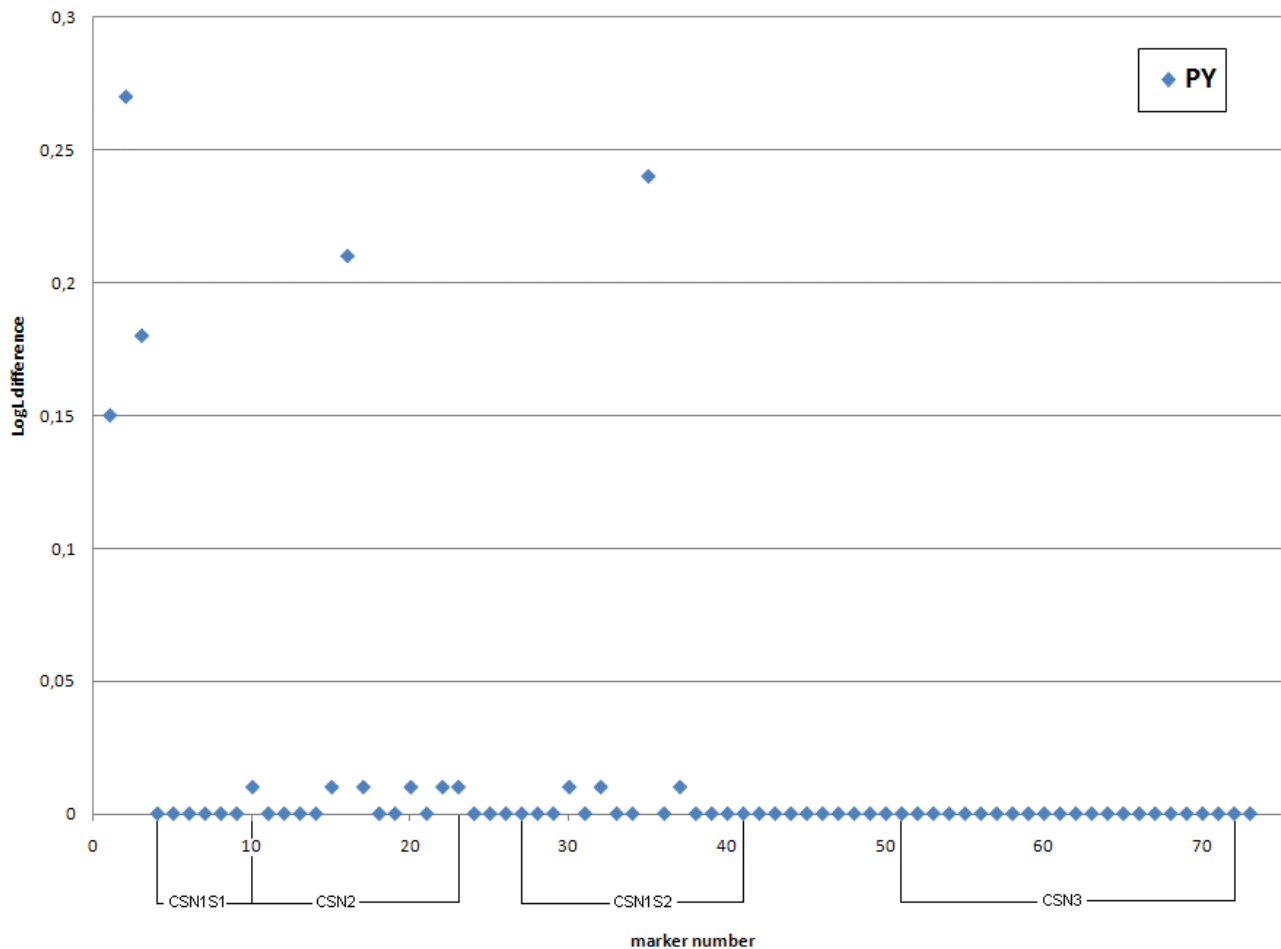


Figure 5
A multiple SNP association test results for protein yield when fitting CSN2_67 as fixed effect in the model. The x-axis denotes marker number and the y-axis the LogL differences.

acid sequence similarities [32]. This evolutionary origin may also account for the LD segmentation described in this paper.

In accordance with the LDLA results, the single SNP association tests did not detect significant results for the CSN3 region, whereas a large number of significant associations were detected between SNPs within CSN2 and CSN1S2, and protein and milk yields. The most significant results were found for CSN2_67, CSN2-BMC_9215 and CSN1S2-BMC_17192. When fitting CSN2_67 as fixed effect in a multiple SNP association test it removed almost all peaks for other markers in the region (Figure 5). This indicates that CSN2_67 is in strong LD with the underlying causal variation in Norwegian Red. However, the fact that the two SNP alleles seem to display contradictory effects in

various cattle breeds [6-8,10] argue against CSN2_67 as being an underlying causal variation.

Notably, CSN2_67 determines the genetic variants A1/B versus A2. The C → A substitution at codon 67 results in the exchange of proline with histidine in the amino acid sequence [33], leading to a difference in the conformation of the secondary structure of the expressed protein. It is thought that the A allele at CSN2_67 yields the bioactive peptide beta-casomorphin 7 (BCM-7), a peptide with opioid-like effect, which may play an unclear role in the development of some human diseases (for a review, see [34]). It has been suggested that a high consumption of A1/B milk increases the risk of type 1 (insulin-dependent) diabetes mellitus [35], ischaemic heart disease [36], sudden infant death syndrome (SIDS) [37], the aggravation

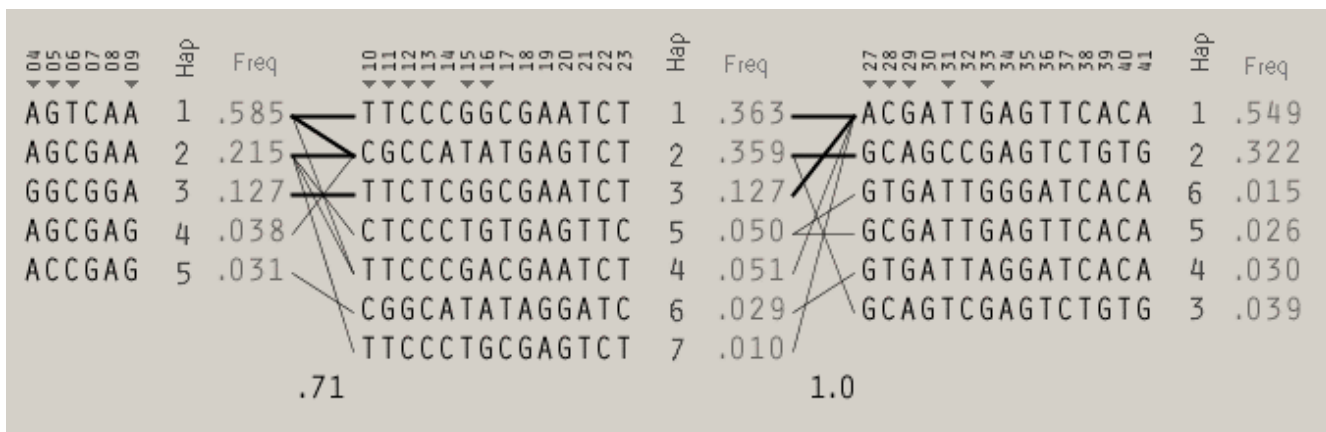


Figure 6
Loci haplotype combinations; CSN1S1 (marker 4 to 9), CSN2 (marker 10 to 23) and CSN1S2 (marker 27 to 41), and their haplotype number (Hap; black numbers) and frequencies (Freq; grey numbers) in 1143 Norwegian Red bulls (sires and sons). TagSNPs for each haplotype block, identified by pairwise tagging in the Haploview program, are presented by triangles in the figure; more marker information can be found in Additional file 1.

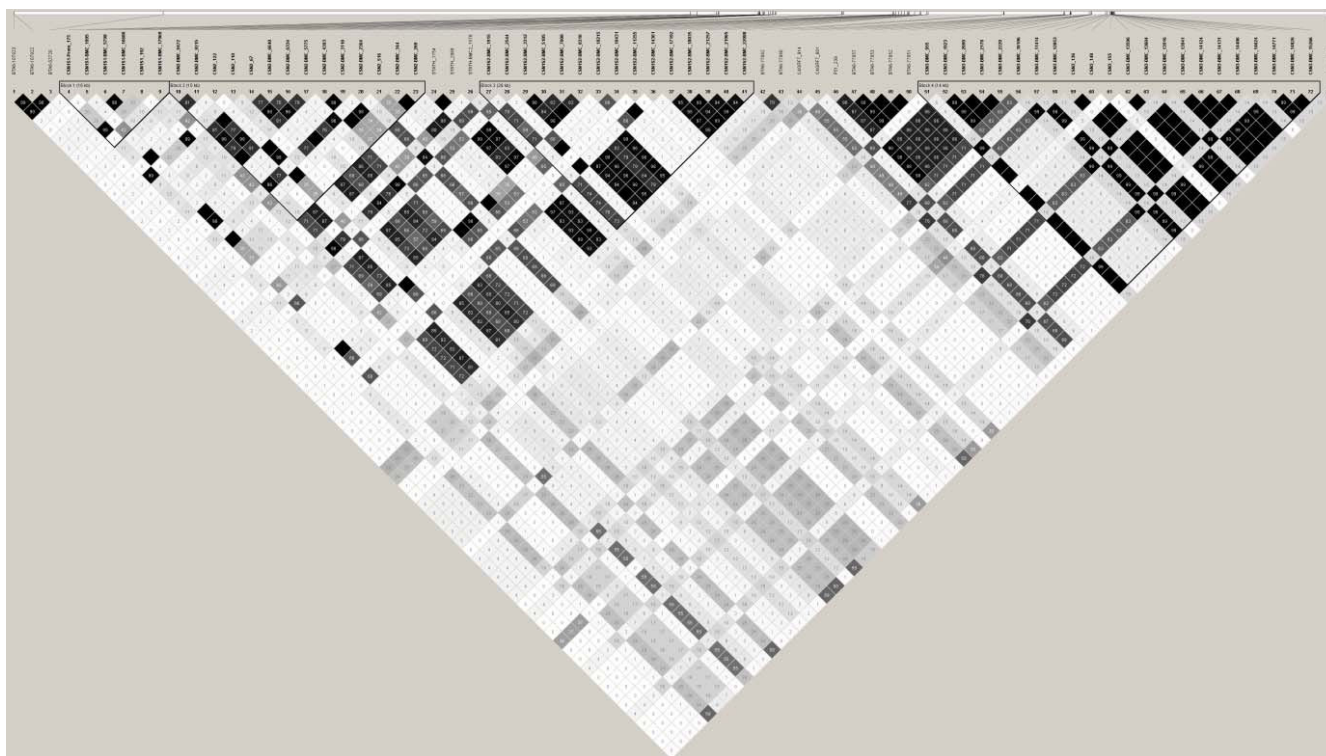


Figure 7
LD across the casein segment visualized using the Haploview program [26]. Each diamond contains the level of LD measured by r^2 between the markers specified; darker tones correspond to increasing levels of r^2 ; triangles indicate division by loci.

Table 1: Level of significance of haplotype effects within locus/haplotype block for protein yield (PY) and milk yield (MY). LogL differences above 5.4 are regarded as significant (P < 0.0005)

Haplotype	LogL differences	
	Protein yield	Milk yield
CSN1S1	2.7	0.2
CSN2	22.7	13.0
CSN1S2	24.1	14.4
CSN3	3.0	2.4
CSN1S1-CSN2-CSN1S2	22.1	13.3

of symptoms associated with schizophrenia and autism (reviewed in [38]), and may also correlate with milk allergy [39,40] in humans.

The high degree of LD between SNPs allowed us to construct haplotypes within and across the CSN1S1, CSN2 and CSN1S2 genes and investigate associations between haplotypes and DYDs for protein yield and milk yield. Analysis for CSN2 reveals two haplotypes (2 and 5) that associate with low protein yield values whereas four haplotypes (1, 3, 4 and 6) seem to be associated with higher PY levels (Figure 8). The difference between these two

classes of haplotypes is characterized by the three SNPs CSN2-BMC_9215, CSN2_67 and CSN2-BMC_6334 (marker 11, 14 and 16, respectively; Figure 6), all of which have high LogL differences in the single SNP association test for both PY and MY.

For the CSN1S2 locus, we detected two haplotypes that seem to be associated with increased protein yield (1 and 5) whereas three haplotypes (2, 3 and 4) tend to be associated with a lower protein yield (Figure 9). CSN1S2 haplotype 5 is part of CSN2 haplotype 5 (see Figure 6). No significant haplotype was detected for CSN1S1 (data not shown). The main reason is probably that CSN2 haplotypes 1 (positive for protein yield) and 2 (negative for protein yield) combine into one frequent haplotype in CSN1S1.

For the extended block covering CSN1S1-CSN2-CSN1S2, we detected four haplotypes that associate with reduced milk and protein production (haplotype 2, 3, 6 and 7). Interestingly, all of these haplotypes contain the A-allele of CSN2_67 (the A1/B variant), in addition to the G-allele of CSN2-BMC_9215 (Additional file 2). In contrast, haplotypes containing the CSN2-A2 variant tend to associate

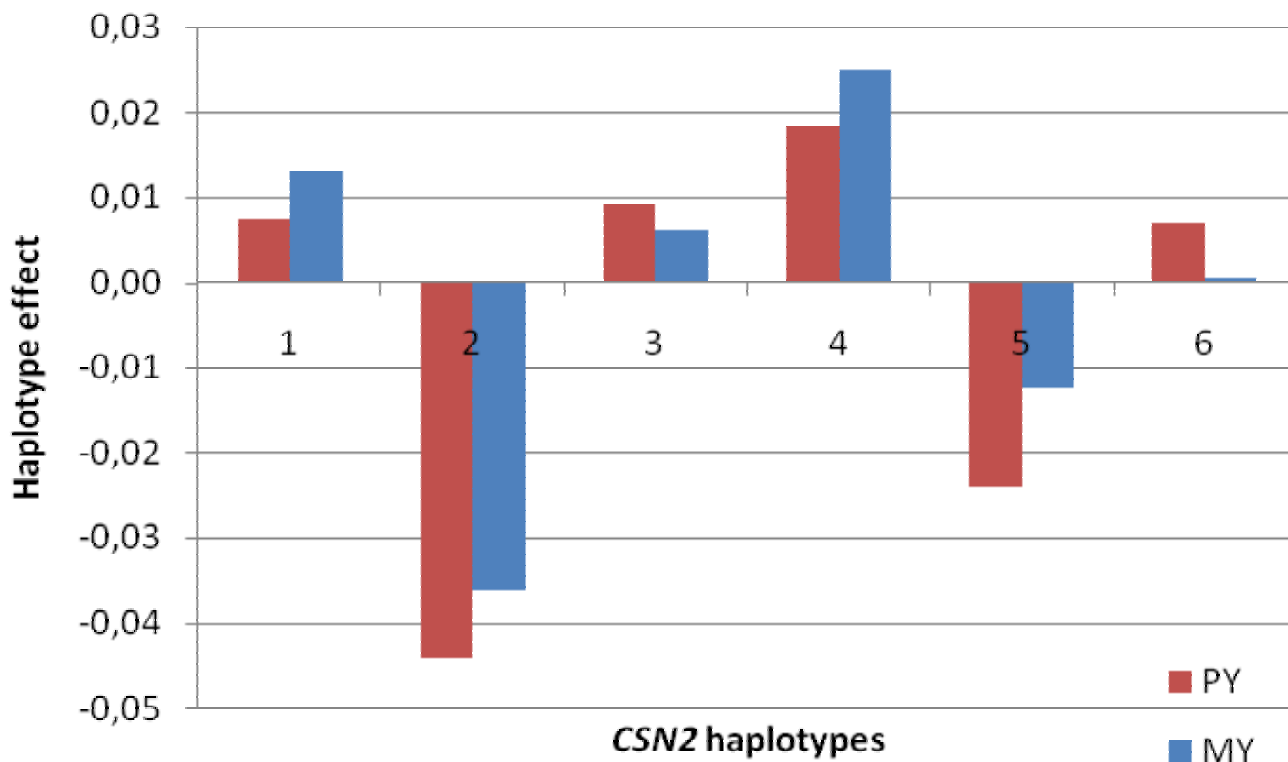


Figure 8
Effects of CSN2 (β-casein) haplotypes on PY and MY. The x-axis denotes haplotype number and the y-axis shows haplotype effects in phenotypic standard deviations of the traits. Significance levels of haplotype effects are given in Table 1.

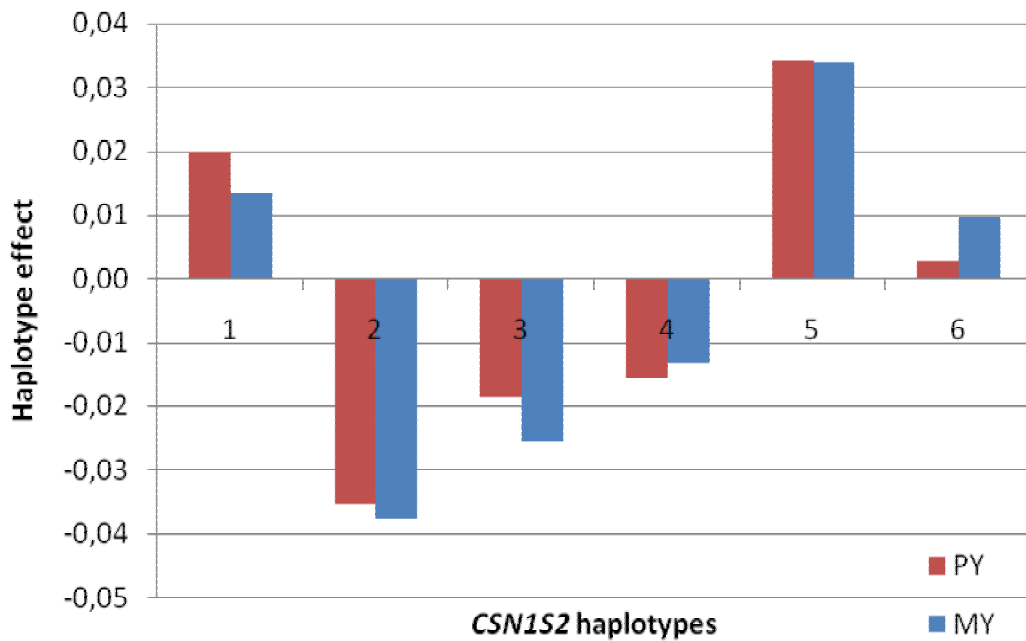


Figure 9
Effect of CSN1S2 (α_{s2} -casein) haplotypes on PY and MY. The x-axis denotes haplotype number and the y-axis shows haplotype effects in phenotypic standard deviations of the traits. Significance levels of haplotype effects are given in Table I.

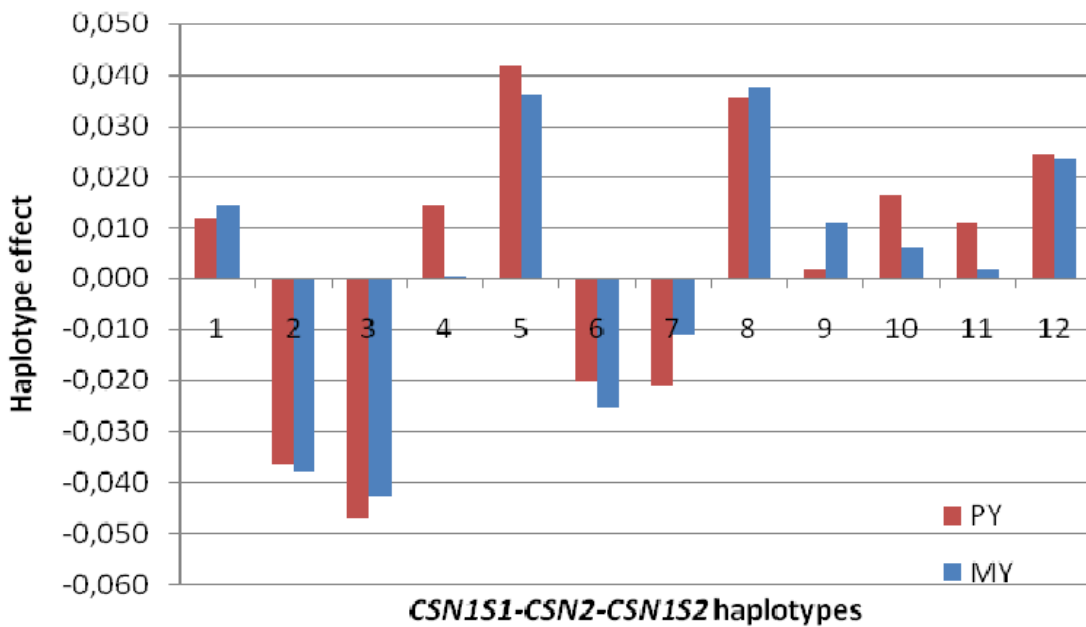


Figure 10
Haplotype effects on PY and MY for a haplotype block constructed for CSN1S1-CSN2-CSN1S2. Only haplotypes with population frequency above 0.9% are shown; the x-axis denotes haplotype number and the y-axis shows haplotype effects given in phenotypic standard deviations of the traits; significance levels of haplotype effects are given in Table I.

with increased milk and protein yields. As consumption of CSN-A2 milk may have an accompanying positive effect on human health [39,40,35,34,38,36,37] it is recommended to increase the frequency of this allele in the Norwegian cattle population. One possible way of implementation would be to preselect calves prior to phenotype testing for growth performance and progeny testing for milk performance.

Competing interests

The authors declare that they have no competing interests.

Authors' contributions

HN participated in designing the study, carried out the SNP detection, was involved in the construction of the map and the haplotypes, and drafted the manuscript. HGO performed the QTL analysis, single SNP and haplotype association tests, and helped to draft the manuscript. BH participated in supervising the study. ES and MS provided all pedigree and performance information. TN designed the CRIHAP program script. TM participated in the statistical analysis. SL supervised the study, coordinated the SNP identification and genotyping process, constructed the map, performed the haplotype construction, was involved in the design of the CRIHAP program script, and finalized the manuscript. All authors read and approved the final manuscript.

Additional material

Additional file 1

Detailed SNP information. A list of the SNPs, including accession numbers in dbSNP, assays for genotyping on the MassARRAY system (Sequenom, San Diego, USA), marker allele frequencies, predicted physical distances between markers, and surrounding sequence of each SNP.

Click here for file

[<http://www.biomedcentral.com/content/supplementary/1297-9686-41-24-S1.txt>]

Additional file 2

Haplotypes covering the CSN1S1-CSN2-CSN1S2 region (marker 4 to 41), their haplotype number and frequencies in 1143 Norwegian Red bulls (sires and sons)

Click here for file

[<http://www.biomedcentral.com/content/supplementary/1297-9686-41-24-S2.doc>]

Acknowledgements

We would like to thank GENO Breeding and AI association for providing relationship information and DYDs for bulls. This project has been funded by The Research Council of Norway. The authors gratefully acknowledge the early pre-publication access under the Fort Lauderdale conventions to the draft bovine genome sequence provided by the Baylor College of Medicine Human Genome Sequencing Center and the Bovine Genome Sequencing Project Consortium.

References

- Khatkar MS, Thomson PC, Tammen I, Raadsma HW: **Quantitative trait loci mapping in dairy cattle: review and meta-analysis.** *Genet Sel Evol* 2004, **36**:163-190.
- Smaragdov MG: **Genetic mapping of loci responsible for milk quality parameters in dairy cattle.** *Genetika* 2006, **42**:5-21.
- Olsen HG, Lien S, Gautier M, Nilsen H, Roseth A, Berg PR, Sundsaasen KK, Svendsen M, Meuwissen THE: **Mapping of a milk production quantitative trait locus to a 420-kb region on bovine chromosome 6.** *Genetics* 2005, **169**:275-283.
- Cohen-Zinder M, Seroussi E, Larkin DM, Looor JJ, Everts-van der Wind A, Lee JH, Drackley JK, Band MR, Hernandez AG, Shani M, Lewin HA, Weller JL, Ron M: **Identification of a missense mutation in the bovine ABCG2 gene with a major effect on the QTL on chromosome 6 affecting milk yield and composition in Holstein cattle.** *Genome Res* 2005, **15**:936-944.
- Olsen HG, Nilsen H, Hayes B, Berg PR, Svendsen M, Lien S, Meuwissen T: **Genetic support for a quantitative trait nucleotide in the ABCG2 gene affecting milk composition of dairy cattle.** *BMC Genetics* 2007, **8**:32.
- Boettcher PJ, Caroli A, Stella A, Chessa S, Budelli E, Canavesi F, Ghireldi S, Pagnacco G: **Effects of casein haplotypes on milk production traits in Italian Holstein and Brown Swiss cattle.** *J Dairy Sci* 2004, **87**:4311-4317.
- Bovenhuis H, Weller JL: **Mapping and analysis of dairy cattle quantitative trait loci by maximum likelihood methodology using milk protein genes as genetic markers.** *Genetics* 1994, **137**:267-280.
- Ilkonen T, Bovenhuis H, Ojala M, Ruottinen O, Georges M: **Associations between casein haplotypes and first lactation milk production traits in Finnish Ayrshire cows.** *J Dairy Sci* 2001, **84**:507-514.
- Lien S, Gomez-Raya L, Steine T, Finland E, Rogne S: **Associations between casein haplotypes and milk yield traits.** *J Dairy Sci* 1995, **78**:2047-2056.
- Velmalä R, Vilkkijä J, Elo K, Maki-Tanila A: **Casein haplotypes and their association with milk production traits in the Finnish Ayrshire cattle.** *Anim Genet* 1995, **26**:419-425.
- Velmalä R, Vilkkijä H, Elo K, de Koning DJ, Maki-Tanila A: **A search for quantitative trait loci for milk production traits on chromosome 6 in Finnish Ayrshire cattle.** *Anim Genet* 1999, **30**:136-143.
- Farrell HM Jr, Jimenez-Flores R, Bleck GT, Brown EM, Butler JE, Creamer LK, Hicks CL, Hollar CM, Ng-Kwai-Hang KF, Swaisgood HE: **Nomenclature of the proteins of cows' milk – sixth revision.** *J Dairy Sci* 2004, **87**:1641-1674.
- Ferretti L, Leone P, Sgarrella V: **Long range restriction analysis of the bovine casein genes.** *Nucleic Acids Res* 1990, **18**:6829-6833.
- Threadgill DW, Womack JE: **Genomic analysis of the major bovine milk protein genes.** *Nucleic Acids Res* 1990, **18**:6935-6942.
- Martin P, Szymanowska M, Zwierzchowski L, Leroux C: **The impact of genetic polymorphisms on the protein composition of ruminant milks.** *Reprod Nutr Dev* 2002, **42**:433-459.
- Schild TA, Geldermann H: **Variants within the 5'-flanking regions of bovine milk-protein-encoding genes. III. Genes encoding the Ca-sensitive caseins α_{s1} , α_{s2} and β .** *Theor Appl Genet* 1996, **93**:887-893.
- Svendsen M, Heringstad B: **New genetic evaluation for clinical mastitis in multiparous Norwegian Red cows.** *Interbull Bull* 2006, **35**:8-11.
- Nilsen H, Hayes B, Berg PR, Roseth A, Sundsaasen KK, Nilsen K, Lien S: **Construction of a dense SNP map for bovine chromosome 6 to assist the assembly of the bovine genome sequence.** *Anim Genet* 2008, **39**:97-104.
- Lien S, Rogne S: **Bovine casein haplotypes: number, frequencies and applicability as genetic markers.** *Anim Genet* 1993, **24**:373-376.
- Bovine Genome Project** [<http://www.hgsc.bcm.tmc.edu/>]
- Gilmour AR, Cullis BR, Welham SJ, Thompson R: *ASREML reference manual* New South Wales Agriculture; 2001.
- Baret PV, Knott SA, Visscher PM: **On the use of linear regression and maximum likelihood for QTL mapping in half-sib designs.** *Genet Res* 1998, **72**:149-158.
- Green P, Falls K, Crooks S: *Documentation for CRI-MAP, version 2.4* Washington University School of Medicine St. Louis; 1990.

24. Stephens M, Donnelly P: **A comparison of bayesian methods for haplotype reconstruction from population genotype data.** *Am J Hum Genet* 2003, **73**:1162-1169.
25. Stephens M, Smith NJ, Donnelly P: **A new statistical method for haplotype reconstruction from population data.** *Am J Hum Genet* 2001, **68**:978-989.
26. Barrett JC, Fry B, Maller J, Daly MJ: **Haploview: analysis and visualization of LD and haplotype maps.** *Bioinformatics* 2005, **21**:263-265.
27. Nilsen H, Olsen HG, Hayes B, Nome T, Svendsen M, Meuwissen T, Lien S: **Identification of a haplotype on bovine chromosome 6 reducing clinical mastitis while simultaneously increasing protein yield.** *Anim Genet* in press.
28. Hayes B, Hagesaether N, Adnoy T, Pellerud G, Berg PR, Lien S: **Effects on production traits of haplotypes among casein genes in Norwegian goats and evidence for a site of preferential recombination.** *Genetics* 2006, **174**:455-464.
29. Alexander LJ, Stewart AF, Mackinlay AG, Kapelinskaya TV, Tkach TM, Gorodetsky SI: **Isolation and characterization of the bovine kappa-casein gene.** *Eur J Biochem* 1988, **178**:395-401.
30. Groenen MA, Dijkhof RJ, Verstege AJ, Poel JJ van der: **The complete sequence of the gene encoding bovine alpha s2-casein.** *Gene* 1993, **123**:187-193.
31. Groenen MA, Dijkhof RJ, Poel JJ van der, van Diggelen R, Verstege E: **Multiple octamer binding sites in the promoter region of the bovine alpha s2-casein gene.** *Nucleic Acids Res* 1992, **20**:4311-4318.
32. Jolles P, Loucheux-Lefebvre MH, Henschen A: **Structural relatedness of kappa-casein and fibrinogen gamma-chain.** *J Mol Evol* 1978, **11**:271-277.
33. Groves ML: **Some minor components of casein and other phosphoproteins in milk. A review.** *J Dairy Sci* 1969, **52**:1155-1165.
34. Kaminski S, Cieslinska A, Kostyra E: **Polymorphism of bovine beta-casein and its potential effect on human health.** *J Appl Genet* 2007, **48**:189-198.
35. Elliott RB, Harris DP, Hill JP, Bibby NJ, Wasmuth HE: **Type I (insulin-dependent) diabetes mellitus and cow milk: casein variant consumption.** *Diabetologia* 1999, **42**:292-296.
36. McLachlan CN: **Beta-casein A1, ischaemic heart disease mortality, and other illnesses.** *Med Hypotheses* 2001, **56**:262-272.
37. Sun Z, Zhang Z, Wang X, Cade R, Elmir Z, Fregly M: **Relation of beta-casomorphin to apnea in sudden infant death syndrome.** *Peptides* 2003, **24**:937-943.
38. Knivsberg AM, Reichelt KL, Nodland M: **Reports on dietary intervention in autistic disorders.** *Nutr Neurosci* 2001, **4**:25-37.
39. Chatchatee P, Jarvinen KM, Bardina L, Beyer K, Sampson HA: **Identification of IgE- and IgG-binding epitopes on alpha(s1)-casein: differences in patients with persistent and transient cow's milk allergy.** *J Allergy Clin Immunol* 2001, **107**:379-383.
40. Chatchatee P, Jarvinen KM, Bardina L, Vila L, Beyer K, Sampson HA: **Identification of IgE and IgG binding epitopes on beta- and kappa-casein in cow's milk allergic patients.** *Clin Exp Allergy* 2001, **31**:1256-1262.

Publish with **BioMed Central** and every scientist can read your work free of charge

"BioMed Central will be the most significant development for disseminating the results of biomedical research in our lifetime."

Sir Paul Nurse, Cancer Research UK

Your research papers will be:

- available free of charge to the entire biomedical community
- peer reviewed and published immediately upon acceptance
- cited in PubMed and archived on PubMed Central
- yours — you keep the copyright

Submit your manuscript here:
http://www.biomedcentral.com/info/publishing_adv.asp

