

PROCEEDINGS

Open Access

Genetic analysis and morphological identification of pilus-like structures in members of the genus *Bifidobacterium*

Elena Froni^{1†}, Fausta Serafini^{1†}, Davide Amidani^{2†}, Francesca Turrone¹, Fei He³, Francesca Bottacini⁴, Mary O'Connell Motherway⁴, Alice Viappiani¹, Ziding Zhang³, Claudio Rivetti², Douwe van Sinderen⁴, Marco Ventura^{1*}

From 10th Symposium on Lactic Acid Bacterium
Egmond aan Zee, the Netherlands. 28 August - 1 September 2011

Abstract

Background: Cell surface pili in Gram positive bacteria have been reported to orchestrate the colonization of host tissues, evasion of immunity and the development of biofilms. So far, little if any information is available on the presence of pilus-like structures in human gut commensals like bifidobacteria.

Results and discussion: In this report, Atomic Force Microscopy (AFM) of various bifidobacterial strains belonging to *Bifidobacterium bifidum*, *Bifidobacterium longum* subsp. *longum*, *Bifidobacterium dentium*, *Bifidobacterium adolescentis* and *Bifidobacterium animalis* subsp. *lactis* revealed the existence of appendages resembling pilus-like structures. Interestingly, these microorganisms harbour two to six predicted pilus gene clusters in their genome, with each organized in an operon encompassing the major pilin subunit-encoding gene (designated *fimA* or *fimP*) together with one or two minor pilin subunit-encoding genes (designated as *fimB* and/or *fimQ*), and a gene encoding a sortase enzyme (*strA*). Quantitative Real Time (qRT)-PCR analysis and RT-PCR experiments revealed a polycistronic mRNA, encompassing the *fimA/P* and *fimB/Q* genes, which are differentially expressed upon cultivation of bifidobacteria on various glycans.

Introduction

Pili or fimbriae are hair-like appendages commonly found in various Gram negative and Gram positive bacteria (for a review see [1]). Unlike Gram negative pili, whose subunits associate via non-covalent interactions, most pili detected in Gram positive bacteria are formed by covalent polymerization of pilin subunits, orchestrated by transpeptidase enzymes called sortases [2,3]. The general principles of pilus assembly/structure in Gram positive bacteria were first established for the pathogens *Corynebacterium diphtheriae* and *Actinomyces naeslundii* [2-5]. In these microorganisms, the

genes for pilus formation and assembly are arranged in pathogenic islets that each encode one major pilin (represented by either SpaA, SpaD, or SpaH in *C. diphtheriae*, or FimA or FimP in *A. naeslundii*; Spa stands for sortase-mediated pilus assembly and Fim for fimbria-associated adhesion, respectively), one or two minor pilins (represented by the SpaB and SpaC, SpaE and SpaF, or SpaG and SpaI subunit couples in *C. diphtheriae*, or the FimB or FimQ subunits in *A. naeslundii*), and a pilus-specific sortase ([1,2,4,6,7]. In *Actinomyces* the *fimQP* and the *fimAB*-loci encode fimbrial structures composed of a shaft protein, being either FimA or FimP, and a tip protein, represented by either FimB or FimQ, respectively [3,8]. Pilus gene clusters that encode a sortase have been found in many important Gram positive pathogens including *Clostridium perfringens*, enterococci and various streptococcal species,

* Correspondence: marco.ventura@unipr.it

† Contributed equally

¹Laboratory of Probiogenomics, Department of Genetics, Biology of Microorganisms, Anthropology and Evolution, University of Parma, Italy
Full list of author information is available at the end of the article

as well as in the *Actinomyces* taxon [1,2,7,9]. Recently, two pilus gene clusters have been identified in the genome of a human gut commensal *Lactobacillus rhamnosus* GG [10,11].

It has been shown that pili are involved in the attachment/colonization of members of the human microbiota to host tissues, as pilus-mediated adherence is a critical step in the establishment of infection by several Gram negative pathogens [12][13] as well as in Gram positive bacteria like corynebacteria [14] and *Actinomyces*[8]. In *Enterococcus faecalis*, pili are needed for biofilm production and non-piliated mutants are dramatically attenuated in an endocarditis model [9]. Furthermore, the presence of pili in streptococci was demonstrated to stimulate the host inflammatory response [13]. Recently, the mucosal adhesion features of the human intestinal bacterium, *Lactobacillus rhamnosus* GG were demonstrated to be due to the SpaCBA and SpaFED pilin subunits encoded by this organism [11].

Bifidobacteria are the most numerous bacterial members of the gut microbiota of infants [15,16]. They have been claimed to elicit several health-promoting or probiotic effects, such as strengthening of the intestinal barrier, modulation of the immune response and exclusion of pathogens [17,18]. Although there is some evidence to support each of these functional claims for particular bifidobacterial strains, the molecular mechanisms by which these activities are achieved remain largely unknown. Genome sequencing efforts have started to highlight the genetic strategies followed by bifidobacteria in order to colonize the human gut [19-23]. In a recent study, we discovered that the genome of *Bifidobacterium bifidum* PRL2010 harbors a large gene set involved in the utilization of host-derived glycans, such as those found in the outermost layer of the intestinal mucosa [24]. These findings therefore represent a clear example of host-microbe co-evolution, and presented *B. bifidum* PRL2010 as a bifidobacterial prototype for the analysis of the interaction between microbes and the intestinal mucosa.

The current study provides the first morphological evidence of pili-like structures decorating the cell surface of various bifidobacterial species. It further investigates the genetic organization and transcriptional profiling of the presumed bifidobacterial pilus encoding-gene clusters in response to different growth substrates.

Material and methods

Bacterial strains and culture conditions

Bifidobacterial cultures were incubated in an anaerobic atmosphere (2.99 % H₂, 17.01 % CO₂ and 80 % N₂) in a chamber (Concept 400, Ruskin) in the Man-Rogosa-Sharp (MRS) (Scharlau Chemie, Barcelona, Spain) supplemented with 0.05 % (w/v) L-cysteine hydrochloride

and incubated at 37°C for 16 h. Bifidobacterial cells were also cultivated on MRS where glucose was replaced with 2% (w/v) of an alternative carbon source (lactose, Fructo Oligosaccharides [FOS], mucin or N-acetyl glucosamine).

Sample preparation and AFM imaging

Bacteria from four ml of a bacterial culture were harvested by centrifugation at 4000 rpm and resuspended in 200 µl of PBS (or 20 mM Hepes 7.5, 1 mM EDTA). 200 µl of 5% glutaraldehyde was added, followed by gentle mixing and incubation for 1 minute at room temperature. Thereafter, bacteria were washed four times with PBS by repeated resuspension and collection by centrifugation (4000 rpm). The washed pellet was then resuspended in 200 µl of PBS and kept on ice until AFM imaging.

To facilitate adhesion of bacteria to the mica support used for AFM imaging, mica was coated with polylysine (PL) as follows: 10 µl of a polylysine solution (10 ng/ml) was deposited onto freshly-cleaved mica for one minute. Mica was then rinsed with milliQ water (Millipore) and dried with nitrogen. After this, 20 µl of bacterial suspension was deposited onto PL-coated mica for 2-5 minutes depending on the particular strain or specific cultivation conditions. The mica disk was then rinsed with milliQ water and dried under a weak gas flow of nitrogen. Quality of the sample and density of surface-bound bacteria were verified with an optical microscope.

AFM imaging was performed on dried samples with a Nanoscope III microscope (Digital Instruments) equipped with scanner J and operating in tapping mode. Commercial diving board silicon cantilevers (Mikro-Masch) were used. Best image quality was obtained with high driving amplitude (1-3V) and low scan rate (0.5 Hz). Filamentous structures at the periphery of bacteria were visible in images of 512 x 512 pixels, representing a scansize of 10 µm or less. While imaging both height and amplitude signals were collected. Height images were flattened using Gwyddion software.

Phylogenetic analyses

Genomic survey of the pili-encoding genes were performed by BLAST analysis against the NCBI database of the bifidobacterial FimA/P (cutoff: E-value 1 x 10⁻⁴ and 30% identity over at least 80% of both protein sequences).

Phylogeny calculations, including distance calculations and the generation of phylogenetic trees, were performed using PHYLIP (Phylogeny Inference Package) [25] version 3.5c. Trees were calculated using the neighbour-joining method under Kimura's two-parameter substitution model [26]. Bootstrap values were computed by performing 1000 re-samplings. Dendograms

from gene sequences were drawn using the ClustalW program (<http://www.ebi.ac.uk/Tools/clustalw2/index.html>) and were visualized with the TreeView program (<http://taxonomy.zoology.gla.ac.uk/rod/treeview.html>).

3D structure prediction of pilin major subunit

The 3D structures of pilin major subunits encoded by the so-called *pil* loci of *B. bifidum* PRL2010 (BBPR_1707, BBPR_1801 and BBPR_0283) were predicted using the fold recognition method. Taking the structure prediction of BBPR_1707 as an example, the structure prediction procedures are briefly described as follows. To obtain the structure template, we first submitted the sequence of BBPR_1707 to the protein structure prediction metaserver (http://meta.bioinfo.pl/submit_wizard.pl), which integrated a series of well-established fold recognition methods. Using the top hit ranked by the metaserver, the *Corynebacterium diphtheriae* major pilin subunit (SpaA; PDB code: 3HR6; X-ray resolution: 1.6 Å) was chosen as the structure template, which was based on the fold recognition result of the FFAS algorithm [27]. Then, the corresponding sequence alignment between BBPR_1707 and 3HR6 was also obtained from the FFAS algorithm. Finally, the 3D model of BBPR_1707 was generated and refined by the SCWRL program [28]. Similarly, the structures of BBPR_1801 and BBPR_0283 were predicted based on the same template used for BBPR_1707.

RNA isolation

Total RNA was isolated using the methods described previously [29]. Briefly, cell pellets were resuspended in 1 ml of QUIAZOL (Quiagen, UK) and placed in a tube containing 0.8 g of glass beads (diameter, 106 µm; Sigma). The cells were lysed by shaking the mix on a BioSpec homogenizer at 4°C for 2 min (maximum setting). The mixture was then centrifuged at 12,000 rpm for 15 min, and the upper phase containing the RNA-containing sample was recovered. The RNA sample was further purified by phenol extraction and ethanol precipitation according to an established method [30].

Reverse transcription -PCR analysis

Five micrograms of mRNA was treated with DNase (Roche, United Kingdom) and used as template in a 100 µl reaction mixture containing 20 ng of random primers, each deoxyribonucleoside triphosphate at a concentration of 0.125 mM, and Superscript enzyme (Invitrogen, Paisley, United Kingdom) used according to the manufacturer's instructions to produce cDNA. The cDNA generated was then used as a template for reverse transcription (RT)-PCRs to determine the arrangement of the transcript encompassing the *pil* loci of *B. bifidum* PRL2010 using the primers listed in Additional file 1.

Quantitative real-time reverse transcription PCR (qRT-PCR)

qRT-PCR primers (Additional file 2) were used to amplify the genes encompassing the *pil* loci as indicated in Figure 1, and the reference genes *atpD*, *tufA*, *rpoB* and *ldh*. Criteria for primer design were based on a desired melting temperature TM values between 58 and 60°C and amplicon size of approximately 100 base pairs. qRT-PCR was performed using the CFX96 system (BioRad, CA, USA), fold change was evaluated through the estimation of the CT values with the aid of the CFX96 software (BioRad, CA, USA). PCR products were detected with SYBR Green fluorescent dye and amplified according to the following protocol: one cycle of 95°C for 3 minutes, followed by 39 cycles of 95°C for 5 s and 60°C for 20 s. Melting curve: 65°C to 95°C with increments of 0.5°C/s.

Each PCR reaction mix contained the following: 12.5 µl 2x SYBR SuperMix Green (BioRad, CA, USA), 1 µl of cDNA dilution, each of the forward and reverse primers at 0.5 µM and nuclease-free water was added to obtain a final volume of 20 µl. In each run, negative controls (no cDNA) for each primer set were included.

Fold change was calculated using the CFX96 software (BioRad)

Results and discussion

Cell morphology and pili structures

The cell surface of bifidobacterial cells belonging to different species spanning a variety of ecological origins (Table 1) was analyzed by Atomic Force Microscopy (AFM). Bacterial cells were cultivated on various carbon sources, including simple carbohydrates, i.e. glucose and lactose, as well as more complex sugars such as fructo-oligosaccharides (FOS), representing those that are expected to be present in the human gut [31]. Such analyses revealed the presence of pilus-like structures on the cell surfaces of various bifidobacteria (Fig. 1). Interestingly, in a couple of cases, such as *B. bifidum* PRL2010 the cell surface was shown to be densely piliated with the majority of pili located at cell-polar position. In contrast, under the conditions examined pilus-like structures were shown to be rare if at all present in *B. longum* subsp. *infantis* ATCC15696 (Fig. 1). When we investigated the production of pilus-like structures in several bifidobacteria propagated under various culture conditions, i.e., growth on different carbon sources, by AFM, we observed differential behavior among the strain/species tested (Fig. 1). Notably, in the case of *B. bifidum* PRL2010 cultivation in MRS medium supplemented with FOS caused a high production of pilus-like structures (Fig. 1), which were often seen as polar tufts. In contrast, a different response, i.e., a less abundant production of pili, to FOS cultivation was noticed on the cell surface of *B. dentium* Bd1. The

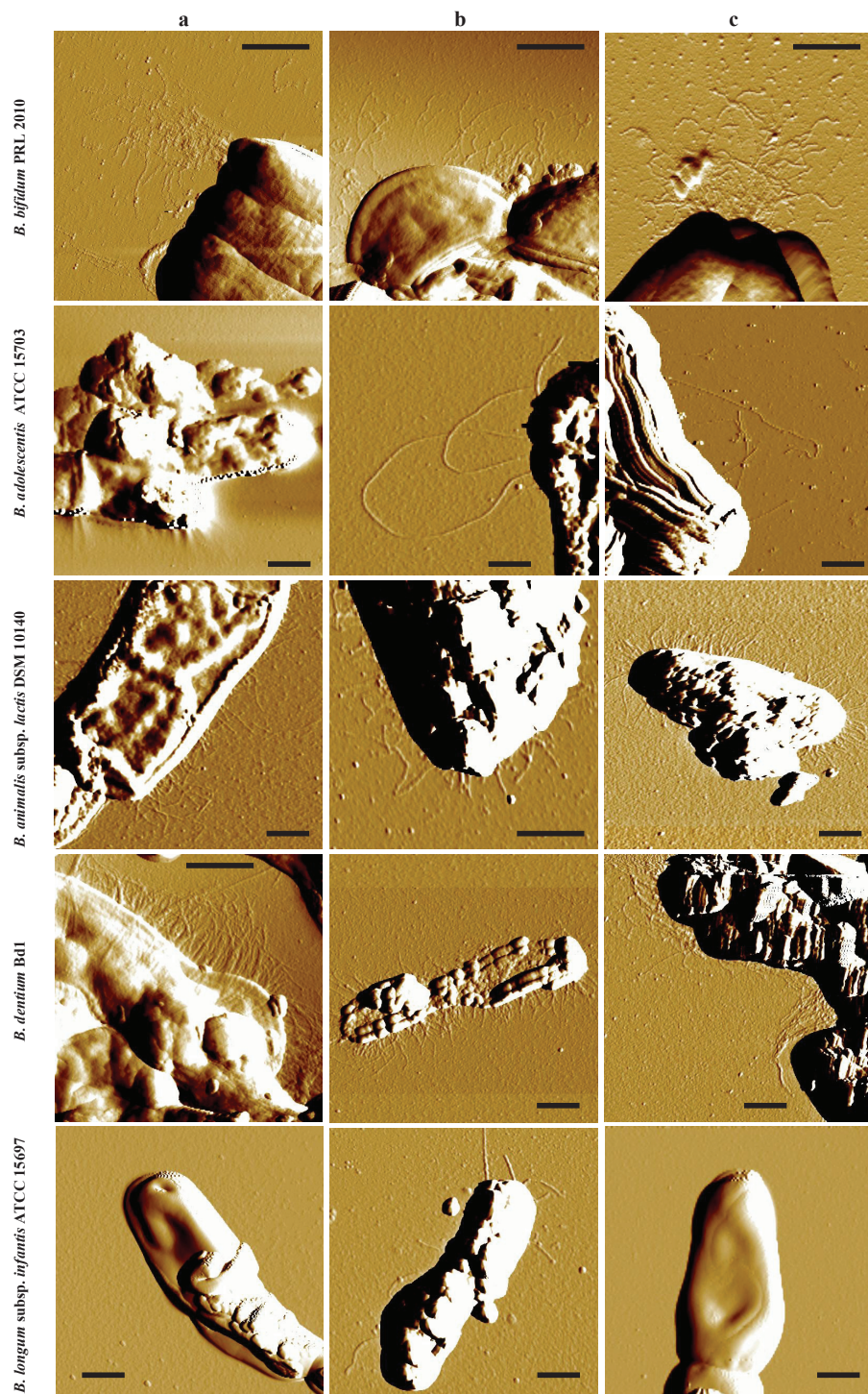


Figure 1 Presence and morphology of pilus-like structures in various bifidobacterial species. Samples were viewed by Atomic Force Microscope. Panels a, b and c show pilus-like structures of bifidobacteria cultivated on glucose, lactose or FOS, respectively, as the sole carbon source. Scale bar 0.5 μ m.

Table 1 Strains used in this study, their origin and effects of the different growth conditions on the on pilus gene/protein expression.

Organism	Origin	Pilus gene cluster	Carbon sources											
			Glucose*		lactose		FOS		mucin		Bovine milk		N-acetylglucosamine	
			AFM	qRT-PCR	AFM	qRT-PCR	AFM	qRT-PCR	AFM	qRT-PCR	AFM	qRT-PCR	AFM	qRT-PCR
<i>B. bifidum</i> PRL2010	Feces of breast-fed infant	282-284	nd	nd	nd	nd	nd	nd	nd	nd	nd	yes	nd	nd
		1707-1709	+	nd	+	nd	+	yes	-	nd	-	nd	-	nd
		1820-1822	nd	nd	nd	nd	nd	nd	nd	nd	yes	nd	nd	nd
<i>B. longum</i> subsp. <i>infantis</i> ATCC15697	Intestine of infant	-	nd	-	+	nd	nd	-	-	-	-	-	-	-
<i>B. dentium</i> Bd1	Dental caries	142-144	nd	nd	nd	nd	nd	nd	nd	nd	nd	nd	nd	nd
		197-200	nd	nd	nd	nd	nd	nd	nd	nd	nd	nd	nd	nd
		276-278	-	-	-	-	-	-	-	-	-	-	-	-
		534-536	+	-	+	-	nd	-	-	-	-	-	-	-
		1874-1876	-	-	-	-	-	-	-	-	-	-	-	-
		2000-2002	nd	nd	yes	nd	nd	nd	nd	nd	nd	nd	nd	nd
<i>B. animalis</i> subsp. <i>lactis</i> DSM10140	Yogurt	1488-1486	+	nd	+	+	+	+	-	nd	-	nd	-	nd
<i>B. adolescentis</i> ATCC15703	Intestine of adult	1467-1470	nd	nd	+	nd	+	+	-	nd	-	+	-	+

*Glucose was used as reference condition for normalizing the qRT-PCR experiments; nd, not identified; +, identified ; -, not performed or present in the genome; ATCC, American Type Culture Collection; DSM, Deutsche Sammlung von Mikroorganismen

observed differential phenotypes of *B. bifidum* PRL2010 versus *B. dentium* Bd1 may be linked to the different ecological niches occupied by these micro organisms, represented by the human intestine and oral cavity, respectively.

The observed sizes of these identified pilus-like structures appeared to be highly variable among the different bifidobacterial species analysed, as well as within the same cell. In particular the length of the filaments was ranging from 100 nm to several micrometers, the width from 10 to 30 nm and the height from 0.5 to 2 nm (Additional file 3). Although the width and the height of these biological structures are affected by the AFM tip size and compression, these measurements indicate the existence of a variable number of pilus-types within the genus *Bifidobacterium*.

Sequence analysis of bifidobacterial pili-loci

As previously described [1,32,33] pilus-encoding gene clusters in genomes of Gram positive bacteria consist of one to three genes specifying pilus subunits and an associated sortase-encoding gene and can thus be identified based on sequence similarities. Recently, the genome sequences of *B. dentium* Bd1, *B. longum* subsp. *infantis* ATCC 15697, *Bifidobacterium longum* subsp. *longum* NCC2705, *Bifidobacterium longum* subsp. *longum* DJO10A, *Bifidobacterium bifidum* PRL2010,

Bifidobacterium adolescentis ATCC15703, and *Bifidobacterium animalis* subsp. *lactis* DSM10140 genomes [19-24] have become available for such purposes. Screening for pilin subunit- and sortase-encoding genes in these genomes revealed the presence of putative pilus gene clusters in all of these genomes with the exception of *B. longum* subsp. *infantis* ATCC15697 (Fig. 2). These putative pilus genetic loci occupy various genomic positions (name designations and genome positions are indicated in Figure 2). Notably, the largest number of pilus gene clusters was identified in the genome of *B. dentium* Bd1, which suggests that this microorganism possesses expanded capabilities to adapt to different ecological environments (e.g., oral cavity as well as intestine and fecal material).

The typical predicted pilus gene cluster identified in these bifidobacterial genomes encompasses genes encoding a major pilin subunit (similar to FimA or FimP) and one or two ancillary minor pilin subunits (similar to FimB and FimQ), which were identified on the basis of amino acid identity with pilin subunits identified in other Gram positive bacteria such as *Actinomyces* spp. and streptococcae. Furthermore, the sequences of the predicted *fimAB*, *fimPQ* gene products contained the anticipated consensus motifs and domains characteristic of a pilin primary structure, including a Sec-dependent secretion signal, the sortase recognition site (CWSS

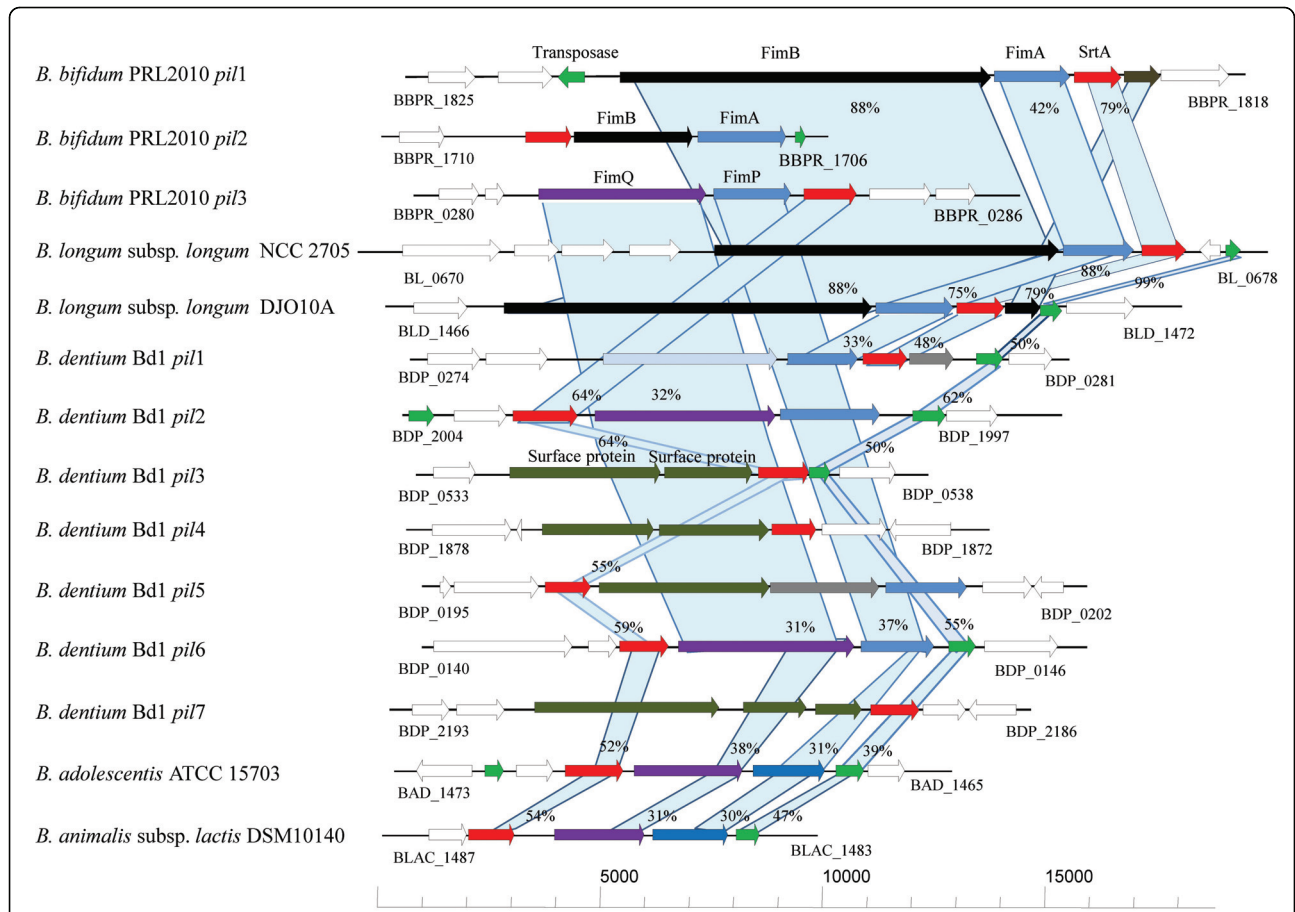


Figure 2 Schematic comparative representation of pilus-encoding loci of various bifidobacterial strains. Each arrow indicates an ORF, the size of which is proportional to the length of the arrow. Colouring of the arrows represents the different function of the gene as indicated above each arrow. The amino acid identity of the relevant encoded proteins is indicated in percentages.

Table 2 Genetic features of the major pilin protein in bifidobacteria.

Strain	Major pilin protein			
	ORF	CWSS	Pilin motif	E box
<i>B. bifidum</i> PRL2010	283	LPKTGA	GDSTAEVDMK	YTVTETAVADGY
<i>B. bifidum</i> PRL2010	1707	LPLTGG	VYSSGSIDMK	YTIEEIAAPNGY
<i>B. bifidum</i> PRL2010	1821	LPGTGG	HSTTVGVDIK	YTLTETEAPAGY
<i>B. dentium</i> Bd1	144	LPLTGA	NHGDNTVNMK	YTVSETKVATGQ
<i>B. dentium</i> Bd1	200	LPLTGG	QTLSYNVTAKE	YTVKETKAPAGY
<i>B. dentium</i> Bd1	277	LPETGG	VAGNVITIPK	YVLTEKTPAGY
<i>B. dentium</i> Bd1	535	LPLTGA	GQTLGVVNVK	YDWEETDAPAGY
<i>B. dentium</i> Bd1	1875	LPITGA	HPAQITIDVKK	YTVTETVWPAGF
<i>B. dentium</i> Bd1	2190	LPSTGG	FEKINSVKVK	YVLSKETPPEGY
<i>B. dentium</i> Bd1	1999	LPLTGA	PLTLGTVAKE	YTVKETATREDL
<i>B. longum</i> subsp. <i>longum</i> NCC2705	675	LPDTGG	KSEYPTVDKT	YYLKETFAPKGY
<i>B. longum</i> subsp. <i>longum</i> DJ010A	1468	LPGTGG	KGSLPTVDKK	YTLTETKAPAGY
<i>B. adolescentis</i> ATCC 15703	1463	LPLTGA	INAVGMFVAK	YTLKETGFASGY
<i>B. animalis</i> subsp. <i>lactis</i> DSM10140	1484	LPLTGA	KPSGTITLTK	YKVTETDVLRSY
<i>A. naeslundii</i> T14V	FimP	LPLTGA	WNYNVHVYPK	YCLVETKAPPEGY
<i>A. naeslundii</i> T14V	FimA	LPLTGA	WIYDVHVYPK	YVLVETKAPAGY
Consensus sequences		LPxTG	xxxxxTVxxK	YxxxETxAPxGY

motif), the pilin-like motif (TVXXXK) and the E box (Table 2) [1,3]. Interestingly, all the identified bifidobacterial pilus gene clusters are flanked by transposon elements, indicative of their acquisition by horizontal gene transfer (HGT) (Fig. 2 and see below).

Notably, in the genome of PRL2010 the ORF1822, encoding a putative FimB, appears to be a pseudogene due to a frame-shift within a stretch of nine guanine residues. However, it is possible that transcriptional slippage along the guanine residues allows expression of this fimbrial subunit under certain environmental conditions [34].

Structural investigation of pili-like proteins encoded by bifidobacteria

In order to corroborate these findings a structural investigation of *B. bifidum* PRL2010 major subunits encoded by the three *pil* loci present in its genome, was performed. The 3D structures of major pilin subunits (BBPR_1707, BBPR_1821 and BBPR_0283) were predicted based on the *Corynebacterium diphtheriae* major pilin subunit (SpaA, PDB code: 3HR6; X-ray resolution: 1.6 Å) through the FFAS03 program [27]. Similar to the 3D structure of 3HR6 [35], the predicted 3D model also comprises three tandem Ig-like domains. The 3D models of BBPR_1707, BBPR_1821 and BBPR_0283 cover residues of their original sequences from 36-487, 89-470 and 143-467, respectively (Fig. 3). Although the overall protein sequence identity between the three major pili subunits and 3HR6 is only in a range of 22–25 %, the results from fold recognition revealed that the predicted structures of the three major pilin subunits are similar to the 3D structure of 3HR6, which contains three tandem Ig-like domains [35].

In addition, in order to model the general structure of the three major bifidobacterial pilin subunits, the predicted 3D models allow the spatial location of some important functional motifs. As reported previously, the threonine-glycine bond within the LPXTG motif (CWSS motif), which is located at the C-terminal of pilin subunit, is recognized and cleaved by a dedicated sortase. Following this cleavage, the inter-molecular covalent linkage between the threonine of the cleaved LPXTG motif in one pilin subunit and a conserved lysine present within the pilin motif of its neighboring pilin subunit leads to fiber assembly by covalent linkages [36]. Additionally, the glutamic acid within the E-box of the major subunit has been reported to be involved in the incorporation of the minor subunit into the pilus fiber. Based on the predicted 3D models, the corresponding pilin motifs as well as the conserved lysines in the three major pilin subunits can be annotated (Fig. 3). Moreover, the E-box motifs in these three major pilin subunits were also identified (Fig. 3).

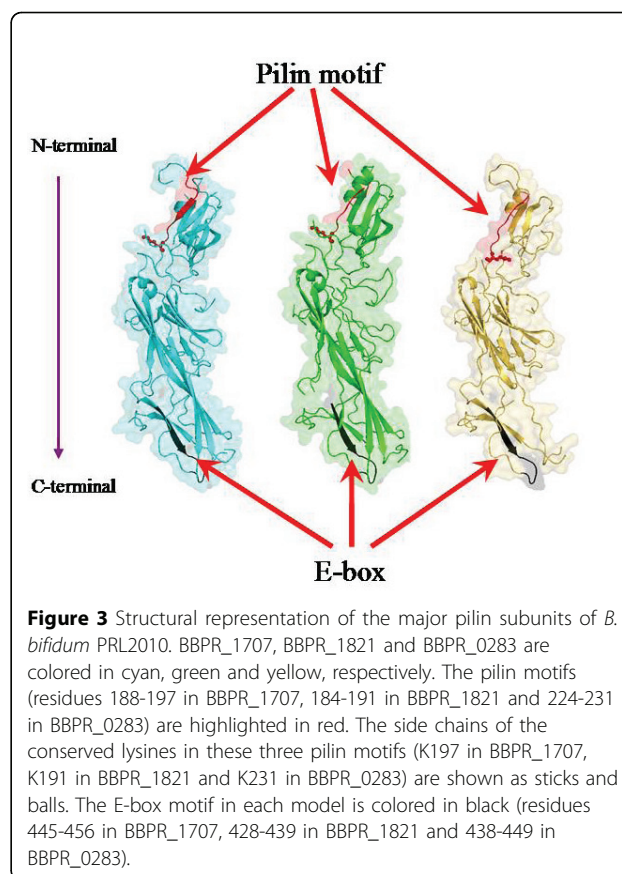


Figure 3 Structural representation of the major pilin subunits of *B. bifidum* PRL2010. BBPR_1707, BBPR_1821 and BBPR_0283 are colored in cyan, green and yellow, respectively. The pilin motifs (residues 188-197 in BBPR_1707, 184-191 in BBPR_1821 and 224-231 in BBPR_0283) are highlighted in red. The side chains of the conserved lysines in these three pilin motifs (K197 in BBPR_1707, K191 in BBPR_1821 and K231 in BBPR_0283) are shown as sticks and balls. The E-box motif in each model is colored in black (residues 445-456 in BBPR_1707, 428-439 in BBPR_1821 and 438-449 in BBPR_0283).

Polymerization of the pilin subunits is catalysed by an enzyme with homology to sortases [37]. Notably, all the detected pili genetic loci encompass a sortase encoding gene (*strA*) belonging to the class C family (Fig. 2). Furthermore, genome analyses revealed the presence of a variable number of additional sortases belonging to the housekeeping sortases, also referred as the class A (data not shown). The class A sortases are usually encoded by genes whose chromosomal locations are unlinked to the genes that encode their specific surface protein substrates [38]. These housekeeping sortases might exert an accessory role in the assembly of pili in bifidobacteria, similar to their role in *C. diphtheriae*, where housekeeping sortases are required for the correct covalent attachment of the major pilin subunits to the cell wall [38].

Phylogenetic analyses of bifidobacterial pilus-associated genes

It has been previously shown that pilus-encoding genes in other microorganisms such as corynebacteria have been acquired through Horizontal Gene Transfer (HGT) events [7,39]. We therefore investigated if this may also have been the case for the pilus-encoding genes of bifidobacteria. In order to assess the distribution of *fimA/P*

homologs across bacteria we surveyed currently available genomic data, representing members of *Actinobacteria*, *Firmicutes* and various Gram negative bacteria (Additional file 4) for the presence of genes specifying predicted major pilus subunits. This analysis revealed that predicted FimA/P-encoding genes are not uniformly present in all bacteria studied to date (data not shown). The distribution of *fimA/P* homologs might be a consequence of the organism's development following a vertical- or horizontal- evolution mechanism. Alignment of the presumed FimA/P-encoding genes was performed using ClustalW and resulted in a rooted neighbour joining phylogenetic tree (Fig. 4). Notably, bifidobacterial FimA/P does form a monophyletic group with other high G+C Gram positive bacteria such as *Actinomyces* spp., as well as with the FimA/P sequences of *Firmicutes* (Fig. 4). Furthermore, bifidobacterial FimA/P sequences cluster together with homologs sequences from Gram negative bacteria such as *Bacteroidetes* spp. (Fig. 4). These phylogenetic inconsistencies based on FimA/P sequences, can be explained by assuming that the bifidobacterial FimA/P-encoding genes, similar to *fimA/P* genes from other high G+C Gram positive, were acquired through HGT events. Other findings that support this hypothesis are the deviating G+C% content of the bifidobacterial *fimA/P* genes compared to the average G+C% content of their genome [e.g. between 5 % lower (in case of *B. longum* subsp. *longum* DJO10A) to 9 % higher (in the case of *B. bifidum* PRL2010 *pil1*) than the G+C average value], as well as by the different codon usage bias for the predicted FimA/P proteins (results not shown).

Transcriptional analysis of bifidobacterial pili loci

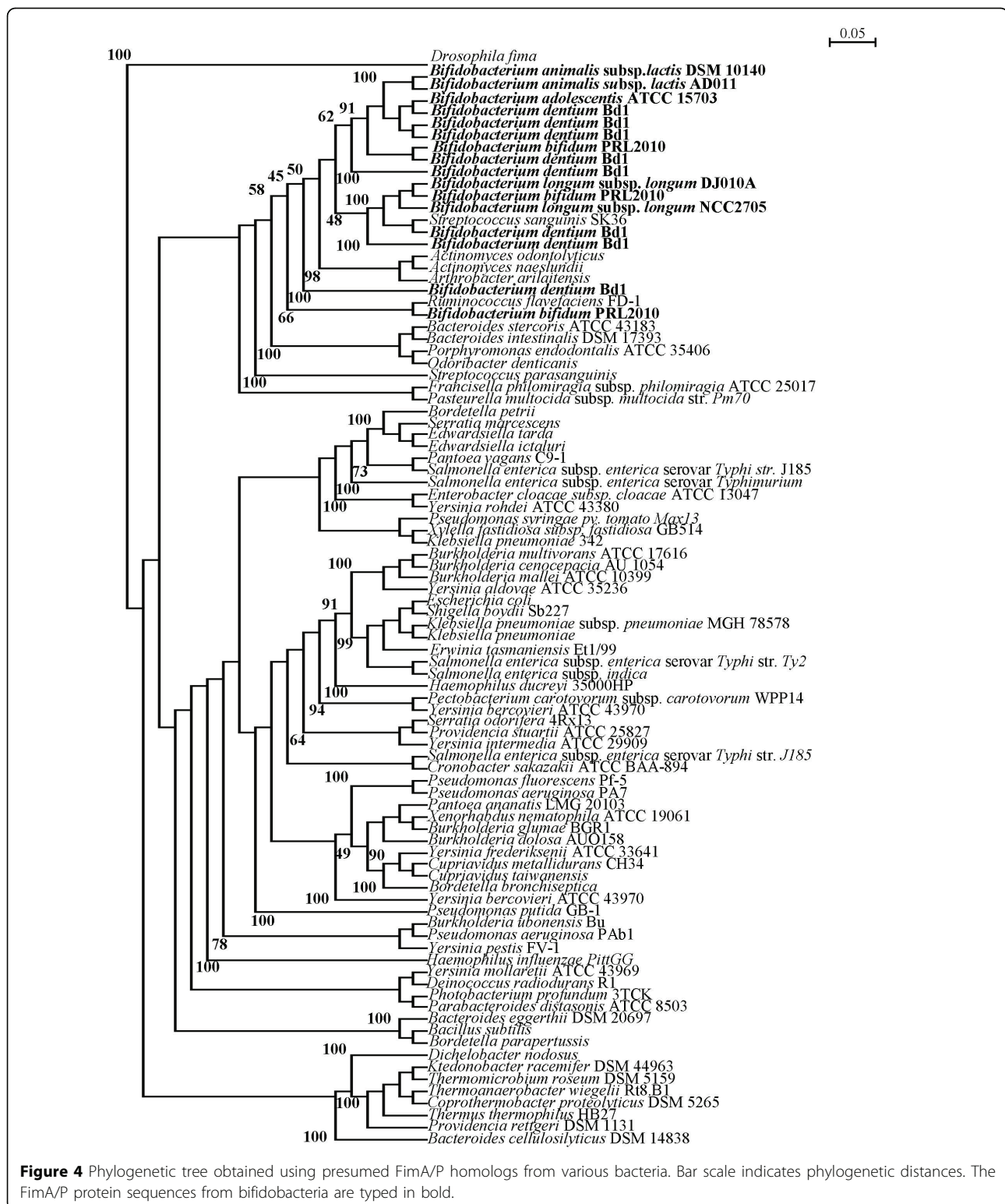
In order to determine if the genes encompassing the pili loci detected in bifidobacteria are differentially transcribed upon exposure to different growth substrates simulating those which may be encountered by bifidobacteria in their natural ecological niche, the amount of predicted pilin gene-specific mRNAs was determined by quantitative real-time PCR (qRT-PCR) assays. Such experiments were performed using mRNA samples extracted from exponentially grown cultures of *B. longum* subsp. *longum* DJO10A, *B. bifidum* PRL2010, *B. animalis* subsp. *lactis* DSM10140, *B. adolescentis* ATCC15703 and *B. dentium* Bd1, which had been resuspended in pre-warmed MRS medium containing one of a varied set of growth substrates [lactose, fructooligosaccharides (FOS), bovine milk, N-acetyl glucosamine and mucin]. The observed induction level of putative pilus subunit/pilin- or sortase-encoding genes in response to these growth substrates was shown to be variable between the different bifidobacterial species and highly variable between different pilus gene clusters

harboured by the same organism (Fig. 5). In *B. adolescentis* ATCC15703 growth on any of these carbohydrate substrates produced an increase of pilin/sortase gene transcription relative to glucose, with the highest level of transcription observed when this strain was cultivated on bovine milk, FOS, or N-acetyl glucosamine (Fig. 5). In contrast, in another intestinal bifidobacterial strain, *B. bifidum* PRL2010, transcription of the putative pilin/sortase-encoding genes was significantly increased relative to glucose-based growth upon cultivation in bovine milk or FOS (Fig. 5). Conversely, the level of pilin-encompassing mRNA of *B. dentium* Bd1, as well as *B. animalis* subsp. *lactis* DSM10140 did not change significantly when this strain was cultivated on any of these substrates (Fig. 5). However, the expression level of pilus-encoding genes in *B. dentium* Bd1 and *B. animalis* subsp. *lactis* DSM10140 changes significantly when such microorganisms were cultivated in the presence of lactose.

The observed differential transcription patterns of the predicted pilus-encoding genes in these bifidobacterial species, i.e., *B. bifidum*, *B. animalis* subsp. *lactis*, *B. adolescentis* and *B. dentium*, may be linked to the specific ecological niche that each of these bacteria occupy (intestine vs. oral cavity as in the case of *B. adolescentis*, *B. bifidum* vs. *B. dentium*, or different niches within the colon, i.e. human intestine vs. animal intestine, such as in the case of *B. bifidum*, *B. adolescentis* vs. *B. animalis* subsp. *lactis*) [15] and thus may be pivotal for their specific colonization strategy. The different pilus gene clusters carried by the genome of a single microorganism (e.g., the *pil1*, *pil2* and *pil3* of *B. bifidum* PRL2010) appear to undergo varying levels of transcriptional induction in response to a particular carbohydrate (Fig. 5), which may be explained by the existence of alternative genetic strategies for bacterial colonization and/or microbe-microbe interactions evolved by a specific bifidobacterial strain, similar to what was previously described for *Actinomyces*[8,40]. Furthermore, such findings suggest that these pili promote adhesion to different molecules (e.g., mucin, epithelial cells, enamel).

Operon organization of the pilus-gene clusters in bifidobacteria

The genetic organization of the pili gene clusters identified in the individual genomes of investigated bifidobacterial species suggests that the pilus subunit-encoding genes and the adjacent sortase-specifying gene in each cluster are co-transcribed. To examine this further, we selected the pilus-encoding gene clusters identified in the genome of *B. bifidum* PRL2010 for transcriptional analysis using RT-PCR experiments. cDNA templates were obtained by RT of total *B. bifidum* PRL2010 mRNAs, isolated from stationary growth stage cells that



had been cultivated on bovine milk and/or FOS. Each cDNA sample was used as template in various PCR reactions that targeted various parts of the pilus-encoding gene cluster and flanking genes through the use of

different combinations of primer pairs (Fig. 6). Notably, amplicons of the expected size were achieved using the internal PCR primer pairs spanning the pilin subunits genes (*fimA/P* and *fimB/Q*). In contrast, no PCR

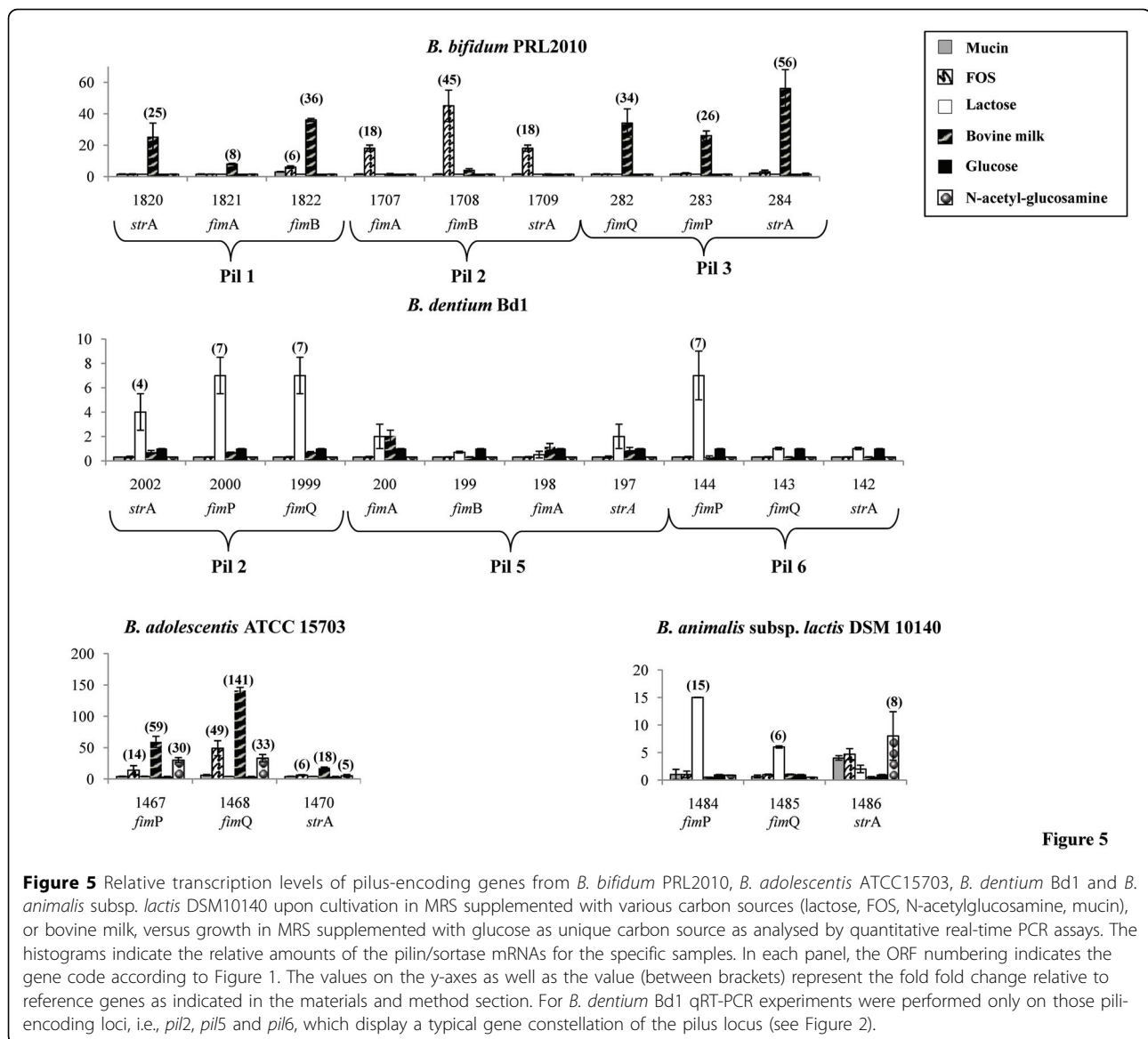


Figure 5 Relative transcription levels of pilus-encoding genes from *B. bifidum* PRL2010, *B. adolescentis* ATCC15703, *B. dentium* Bd1 and *B. animalis* subsp. *lactis* DSM10140 upon cultivation in MRS supplemented with various carbon sources (lactose, FOS, N-acetylglucosamine, mucin), or bovine milk, versus growth in MRS supplemented with glucose as unique carbon source as analysed by quantitative real-time PCR assays. The histograms indicate the relative amounts of the pilin/sortase mRNAs for the specific samples. In each panel, the ORF numbering indicates the gene code according to Figure 1. The values on the y-axes as well as the value (between brackets) represent the fold change relative to reference genes as indicated in the materials and method section. For *B. dentium* Bd1 qRT-PCR experiments were performed only on those pili-encoding loci, i.e., *pil2*, *pil5* and *pil6*, which display a typical gene constellation of the pilus locus (see Figure 2).

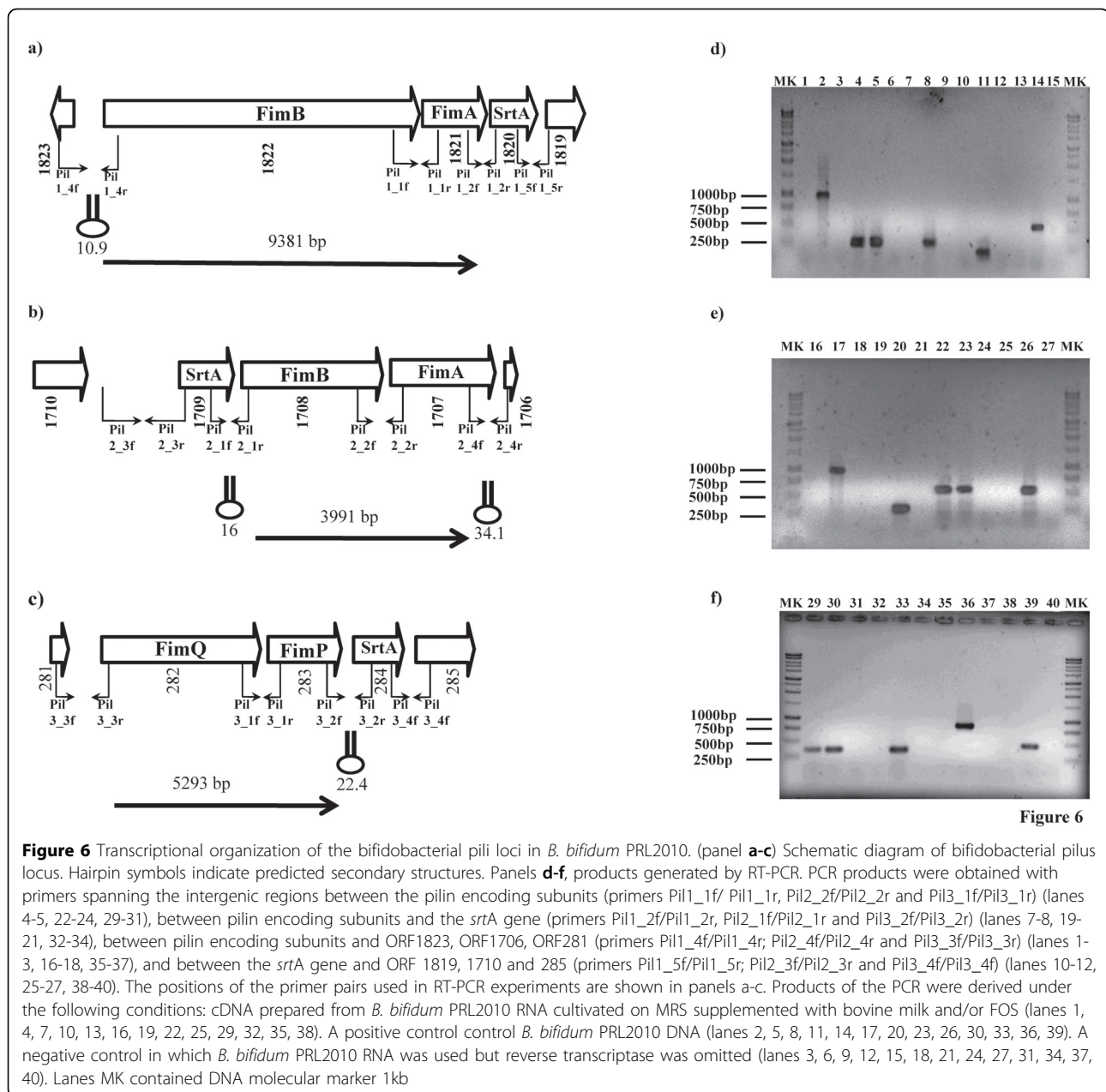
products were obtained, when PCR primers were used that targeted the amplification of the intergenic region between the *strA* and the pilin-encoding genes (Fig. 6). When the same strategy was employed to investigate the co-transcription of the pilus gene locus with the other flanking genes, no RT-PCR products were obtained. Therefore, these data indicate that the genes encompassing the *fimA/P*, *fimB/Q* loci produce a single polycistronic mRNA transcript and are thus organized in an operon, a characteristic of known pilus gene clusters [9,41]. Such findings are also corroborated by the evaluation of the change of mRNA levels of the different genes encompassing the pili-loci obtained by qRT-PCR analysis (Fig.5). Notably, the sortase-encoding gene displayed a different level of induction compared to its neighbouring *fimA/B/P/Q* gene, while in the case where

no induction was noticed for these latter genes, the sortase gene sometimes displayed the opposite behaviour (e.g., in the case of the pilus-operon of *B. animalis* subsp. *lactis* DSM10140).

Analysis of the nucleotide sequence of the pili loci revealed that the gene clusters were flanked at their 3' end by an inverted repeat (ΔG values ranging from -22.4 to 34.1 Kcal) that is expected to function as a rho-independent transcriptional terminator structure (Fig. 6), whereas no such sequences were found between the genes of the presumed pilus subunit-encoding genes.

Conclusions

Although pili are described in both Gram negative and Gram positive bacteria, very little is so far known about the presence of these extracellular structures in



bifidobacteria [15,42]. In this study we provide for the first time visual evidence of the existence of pilus-like structures on the surface of bifidobacterial cells belonging to different species (*B. bifidum*, *B. dentium*, *B. longum* subsp. *longum*, *B. adolescentis* and *B. animalis* subsp. *lactis*). However, the function of pili in bifidobacteria remains still to be elucidated. In close related organisms, such as *C. diphtheriae* and *Actinomyces* spp. pilus fibres are important for bacterial adherence to specific host cells, including epithelial cells, erythrocytes and polymorphonuclear leukocytes [5,14] or for the binding of *Actinomyces* to oral streptococci [43,44]; a

scenario which is also found for human gut commensals such as lactobacilli [10,11], therefore suggesting that the adhesive function played by pili in bacteria represents a conserved functional role of these structures.

The past few years have seen dramatic advances in our knowledge on the genetics of probiotic bacteria such as bifidobacteria through genome sequencing of a large number of strains [19-24]. However, the mechanisms based on which such commensals recognize and interact with the human host are still unclear. The identification of possible receptors recognized by pili and the function of these receptors in signaling and

host defense mechanisms might provide new insights into the molecular mechanisms of microbe-host interactions. In this study we have shown how the expression of the genes encompassing the putative pilus-encoding loci is largely affected by the different composition of the substrate of cultivation, in particular with respect the presence of host-derived products (e. g., mucin or milk). It has been demonstrated that the corynebacterial minor pilin subunits (SpaC and SpaF) plays a pivotal role as receptor in adhesion of the pili to epithelial cells [14]. Considering that many known adhesive receptors in human cells are represented by carbohydrates [45], it is possible that the presence of specific glycans might trigger the expression of pilin-encoding genes. Bifidobacterial strains that were derived from a different ecological origin (e.g., oral vs. intestinal or human vs. animal) display very different transcription induction patterns of the presumptive pilus-gene clusters upon exposure to glycans, which might be a consequence of the fact that these bifidobacteria are adapted to different ecological niches, where the glycan composition is diverse. Furthermore, the identification of pilus-resembling structures decorating the cell surfaces of bifidobacteria whose genomes do not appear to specify sortase-dependent pili, such as *B. longum* subsp. *infantis* ATCC15697, might suggest the existence of additional types of pilus-like structures in bifidobacteria.

At this point we cannot conclusively state that the observed pilus-like surface appendages are encoded by the clusters of genes described in this study. However, recent investigations about the extracellular proteome of *B. animalis* subsp. *lactis* lead to identification of pilin subunits, which correspond to the *B. animalis* subsp. *lactis* pilus-encoding gene cluster (BLAC_1486-BLAC_1484) described in this study [46].

Most bifidobacteria are poorly, if at all, genetically accessible, and therefore it is currently not feasible to perform those experiments needed to confirm the link between the observed pilus structures and their suspected genetic determinants. Future functional genomics investigations directed to the silencing or mutagenesis of the pilus-encoding genes as well as immuno-EM experiments involving antibodies targeting the different pilin subunit will allow an in depth characterization of the genetics of the pilus-like surface appendages displayed by bifidobacteria.

In addition, further studies will be necessary to evaluate the binding activities of these identified pili and to explore how the various pilus-encoding gene clusters from a single microorganism might be expressed in response to colonization of diverse ecological niches and/or exposure to a different microbiota.

Additional material

Additional file 1: Primers used in RT-PCR experiments.

Additional file 2: Primers used in qRT-PCR experiments.

Additional file 3: Profile plot of pili-like structure obtained from the AFM-height images. The noise in the background is mainly due to polylysine used for coating mica.

Additional file 4: List of the pili-encoding genes used for the phylogenetic analyses.

Acknowledgments

This work was financially supported by the Italian Award for Outstanding Young Researcher scheme "Incentivazione alla mobilità" di studiosi stranieri italiani residenti all'estero" and by a Marie Curie Reintegration Grant (MERC-CT-2005-03080) to MV, by Spinner 2013, Regione Emilia Romagna and EFSE. This work was also financially supported by an IRCSET Embark postgraduate fellowship to FB. This study was carried out with financial support (to DvS and MOCM) from Science Foundation Ireland (SFI), through the Irish Government's National Development Plan (Grant No.s 02/CE/B124 and 07/CE/B1368). We thank the Centro Interdipartimentale Misure of the University of Parma for the AFM facility.

This article has been published as part of *Microbial Cell Factories* Volume 10 Supplement 1, 2011: Proceedings of the 10th Symposium on Lactic Acid Bacterium. The full contents of the supplement are available online at <http://www.microbialcellfactories.com/supplements/10/S1>.

Author details

¹Laboratory of Probiogenomics, Department of Genetics, Biology of Microorganisms, Anthropology and Evolution, University of Parma, Italy. ²Biochimica e Biologia Molecolare, University of Parma, Italy. ³State Key Laboratory of Agrobiotechnology, College of Biological Sciences, China Agricultural University, Beijing 100193, China. ⁴Alimentary Pharmabiotic Centre and Department of Microbiology, Bioscience Institute, National University of Ireland, Western Road, Cork, Ireland.

Competing interests

The authors declare that they have no competing interests.

Published: 30 August 2011

References

1. Scott JR, Zahner D: Pili with strong attachments: Gram-positive bacteria do it differently. *Mol Microbiol* 2006, **62**:320-330.
2. Ton-That H, Schneewind O: Assembly of pili on the surface of *Corynebacterium diphtheriae*. *Mol Microbiol* 2003, **50**:1429-1438.
3. Ton-That H, Marraffini LA, Schneewind O: Sortases and pilin elements involved in pilus assembly of *Corynebacterium diphtheriae*. *Mol Microbiol* 2004, **53**:251-261.
4. Mishra A, Das A, Cisar JO, Ton-That H: Sortase-catalyzed assembly of distinct heteromeric fimbriae in *Actinomyces naeslundii*. *J Bacteriol* 2007, **189**:3156-3165.
5. Mishra A, Wu C, Yang J, Cisar JO, Das A, Ton-That H: The *Actinomyces oris* type 2 fimbrial shaft FimA mediates co-aggregation with oral streptococci, adherence to red blood cells and biofilm development. *Mol Microbiol* 2010.
6. Mora M, Bensi G, Capo S, Falugi F, Zingaretti C, Manetti AG, Maggi T, Taddei AR, Grandi G, Telford JL: Group A *Streptococcus* produce pilus-like structures containing protective antigens and Lancefield T antigens. *Proc Natl Acad Sci U S A* 2005, **102**:15641-15646.
7. Telford JL, Barocchi MA, Margarit I, Rappuoli R, Grandi G: Pili in gram-positive pathogens. *Nat Rev Microbiol* 2006, **4**:509-519.
8. Yeung MK, Ragsdale PA: Synthesis and function of *Actinomyces naeslundii* T14V type 1 fimbriae require the expression of additional fimbria-associated genes. *Infect Immun* 1997, **65**:2629-2639.
9. Nallapareddy SR, Singh KV, Sillanpaa J, Garsin DA, Hook M, Erlandsen SL, Murray BE: Endocarditis and biofilm-associated pili of *Enterococcus faecalis*. *J Clin Invest* 2006, **116**:2799-2807.

10. Kankainen M, Paulin L, Tynkkynen S, von Ossowski I, Reunanen J, Partanen P, Satokari R, Vesterlund S, Hendrickx AP, Lebeer S, *et al*: **Comparative genomic analysis of *Lactobacillus rhamnosus* GG reveals pili containing a human- mucus binding protein.** *Proc Natl Acad Sci U S A* 2009, **106**:17193-17198.
11. von Ossowski I, Reunanen J, Satokari R, Vesterlund S, Kankainen M, Huhtinen H, Tynkkynen S, Salminen S, de Vos WM, Palva A: **Mucosal adhesion properties of the probiotic *Lactobacillus rhamnosus* GG SpaCBA and SpaFED pilin subunits.** *Appl Environ Microbiol* 2010, **76**:2049-2057.
12. Pizarro-Cerda J, Cossart P: **Bacterial adhesion and entry into host cells.** *Cell* 2006, **124**:715-727.
13. Barocchi MA, Ries J, Zogaj X, Hemsley C, Albiger B, Kanth A, Dahlberg S, Fernebro J, Moschioni M, Massignani V, *et al*: **A pneumococcal pilus influences virulence and host inflammatory responses.** *Proc Natl Acad Sci U S A* 2006, **103**:2857-2862.
14. Mandlik A, Swierczynski A, Das A, Ton-That H: ***Corynebacterium diphtheriae* employs specific minor pilins to target human pharyngeal epithelial cells.** *Mol Microbiol* 2007, **64**:111-124.
15. Ventura M, Canchaya C, Tauch A, Chandra G, Fitzgerald GF, Chater KF, van Sinderen D: **Genomics of Actinobacteria: tracing the evolutionary history of an ancient phylum.** *Microbiol Mol Biol Rev* 2007, **71**:495-548.
16. Turrioni F, Ribbera A, Foroni E, van Sinderen D, Ventura M: **Human gut microbiota and bifidobacteria: from composition to functionality.** *Antonie Van Leeuwenhoek* 2008, **94**:35-50.
17. Marco ML, Pavan S, Kleerebezem M: **Towards understanding molecular modes of probiotic action.** *Curr Opin Biotechnol* 2006, **17**:204-210.
18. O'Hara AM, Shanahan F: **Mechanisms of action of probiotics in intestinal diseases.** *ScientificWorldJournal* 2007, **7**:31-46.
19. Schell MA, Karmirantzou M, Snel B, Vilanova D, Berger B, Pessi G, Zwahlen MC, Desiere F, Bork P, Delley M, *et al*: **The genome sequence of *Bifidobacterium longum* reflects its adaptation to the human gastrointestinal tract.** *Proc Natl Acad Sci U S A* 2002, **99**:14422-14427.
20. Sela DA, Chapman J, Adeuya A, Kim JH, Chen F, Whitehead TR, Lapidus A, Rokhsar DS, Lebrilla CB, German JB, *et al*: **The genome sequence of *Bifidobacterium longum* subsp. infantis** reveals adaptations for milk utilization within the infant microbiome. *Proc Natl Acad Sci U S A* 2008, **105**:18964-18969.
21. Barrangou R, Briczinski EP, Traeger LL, Loquasto JR, Richards M, Horvath P, Coute-Monvoisin AC, Leyer G, Rendulic S, Steele JL, *et al*: **Comparison of the complete genome sequences of *Bifidobacterium animalis* subsp. lactis DSM 10140 and BI-04.** *J Bacteriol* 2009, **191**:4144-4151.
22. Lee JH, Karamychev VN, Kozyavkin SA, Mills D, Pavlov AR, Pavlova NV, Polouchine NN, Richardson PM, Shakhova VV, Slesarev AI, *et al*: **Comparative genomic analysis of the gut bacterium *Bifidobacterium longum* reveals loci susceptible to deletion during pure culture growth.** *BMC Genomics* 2008, **9**:247.
23. Ventura M, Turrioni F, Zomer A, Foroni E, Giubellini V, Bottacini F, Canchaya C, Claesson MJ, He F, Mantzourani M, *et al*: **The *Bifidobacterium dentium* Bd1 genome sequence reflects its genetic adaptation to the human oral cavity.** *PLoS Genet* 2009, **5**:e1000785.
24. Turrioni F, Bottacini F, Foroni E, Mulder I, Kim JH, Zomer A, Sanchez B, Bidossi A, Ferrarini A, Giubellini V, *et al*: **Genome analysis of *Bifidobacterium bifidum* PRL2010 reveals metabolic pathways for host-derived glycan foraging.** *Proc Natl Acad Sci U S A* 2010, **107**:19514-19519.
25. Felsenstein J: **An alternating least squares approach to inferring phylogenies from pairwise distances.** *Syst Biol* 1997, **46**:101-111.
26. Kimura M: **A simple method for estimating evolutionary rates of base substitutions through comparative studies of nucleotide sequences.** *J Mol Evol* 1980, **16**:111-120.
27. Jaroszewski L, Rychlewski L, Li Z, Li W, Godzik A: **FFAS03: a server for profile-profile sequence alignments.** *Nucleic Acids Res* 2005, **33**:W284-288.
28. Canutescu AA, Shelenkov AA, Dunbrack RL Jr.: **A graph-theory algorithm for rapid protein side-chain prediction.** *Protein Sci* 2003, **12**:2001-2014.
29. Turrioni F, Foroni E, O'Connell Motherway M, Bottacini F, Giubellini V, Zomer A, Ferrarini A, Delledonne M, Zhang Z, van Sinderen D, Ventura M: **Characterization of the serpin-encoding gene of *Bifidobacterium breve* 210B.** *Appl Environ Microbiol* 2010, **76**:3206-3219.
30. **Molecular Cloning. A manual laboratory.** Sambrook 1989.
31. Almagro-Moreno S, Boyd EF: **Insights into the evolution of sialic acid catabolism among bacteria.** *BMC Evol Biol* 2009, **9**:118.
32. Ton-That H, Schneewind O: **Assembly of pili in Gram-positive bacteria.** *Trends Microbiol* 2004, **12**:228-234.
33. Mandlik A, Swierczynski A, Das A, Ton-That H: **Pili in Gram-positive bacteria: assembly, involvement in colonization and biofilm development.** *Trends Microbiol* 2008, **16**:33-40.
34. Gesteland RF, C TR, Atkins JF: **RNA World.**, 4 2009.
35. Kang HJ, Paterson NG, Gaspar AH, Ton-That H, Baker EN: **The *Corynebacterium diphtheriae* shaft pilin SpaA is built of tandem Ig-like modules with stabilizing isopeptide and disulfide bonds.** *Proc Natl Acad Sci U S A* 2009, **106**:16967-16971.
36. Kline KA, Dodson KW, Caparon MG, Hultgren SJ: **A tale of two pili: assembly and function of pili in bacteria.** *Trends Microbiol* 18:224-232.
37. Marraffini LA, Dedent AC, Schneewind O: **Sortases and the art of anchoring proteins to the envelopes of gram-positive bacteria.** *Microbiol Mol Biol Rev* 2006, **70**:192-221.
38. Swaminathan A, Mandlik A, Swierczynski A, Gaspar A, Das A, Ton-That H: **Housekeeping sortase facilitates the cell wall anchoring of pilus polymers in *Corynebacterium diphtheriae*.** *Mol Microbiol* 2007, **66**:961-974.
39. Filloux A: **A variety of bacterial pili involved in horizontal gene transfer.** *J Microbiol* 2010, **192**:3243-3245.
40. Yeung MK, Cisar JO: **Cloning and nucleotide sequence of a gene for *Actinomyces naeslundii* WVU45 type 2 fimbriae.** *J Bacteriol* 1988, **170**:3803-3809.
41. Sillanpaa J, Nallapareddy SR, Prakash VP, Qin X, Hook M, Weinstock GM, Murray BE: **Identification and phenotypic characterization of a second collagen adhesin, Scm, and genome-based identification and analysis of 13 other predicted MSCRAMMs, including four distinct pilus loci, in *Enterococcus faecium*.** *Microbiology* 2008, **154**:3199-3211.
42. Ventura M, O'Flaherty S, Claesson MJ, Turrioni F, Klaenhammer TR, van Sinderen D, O'Toole PW: **Genome-scale analyses of health-promoting bacteria: probiogenomics.** *Nat Rev Microbiol* 2009, **7**:61-71.
43. McIntire FC, Vatter AE, Baros J, Arnold J: **Mechanism of coaggregation between *Actinomyces viscosus* T14V and *Streptococcus sanguis* 34.** *Infect Immun* 1978, **21**:978-988.
44. Yeung MK: **Molecular and genetic analyses of *Actinomyces* spp.** *Crit Rev Oral Biol Med* 1999, **10**:120-138.
45. Kobayashi N, Seto K, Orikawa Y, Hamano H, Yoshinaga K, Takei M: **Z-360, a novel cholecystokinin-2/gastrin receptor antagonist, inhibits gemcitabine-induced expression of the vascular endothelial growth factor gene in human pancreatic cancer cells.** *Biol Pharm Bull* 2010, **33**:216-222.
46. Gilad O, Svensson B, Viborg AH, Stuer-Lauridsen B, Jacobsen S: **The extracellular proteome of *Bifidobacterium animalis* subsp. lactis BB-12 reveals proteins with putative roles in probiotic effects.** *Proteomics* 2011.

doi:10.1186/1475-2859-10-S1-S16

Cite this article as: Foroni *et al*: Genetic analysis and morphological identification of pilus-like structures in members of the genus *Bifidobacterium*. *Microbial Cell Factories* 2011 **10**(Suppl 1):S16.

Submit your next manuscript to BioMed Central and take full advantage of:

- Convenient online submission
- Thorough peer review
- No space constraints or color figure charges
- Immediate publication on acceptance
- Inclusion in PubMed, CAS, Scopus and Google Scholar
- Research which is freely available for redistribution

Submit your manuscript at
www.biomedcentral.com/submit

