

Review

Genomics of adaptation and speciation in cichlid fishes: recent advances and analyses in African and Neotropical lineages

Shaohua Fan, Kathryn R. Elmer and Axel Meyer*

*Lehrstuhl für Zoologie und Evolutionsbiologie, Department of Biology, University of Konstanz,
Universitätstrasse 10, 78457 Konstanz, Germany*

Cichlid fishes are remarkably phenotypically diverse and species-rich. Therefore, they provide an exciting opportunity for the study of the genetics of adaptation and speciation by natural and sexual selection. Here, we review advances in the genomics and transcriptomics of cichlids, particularly regarding ecologically relevant differences in body shape, trophic apparatus, coloration and patterning, and sex determination. Research conducted so far has focused almost exclusively on African cichlids. To analyse genomic diversity and selection in a Neotropical radiation, we conducted a comparative transcriptomic analysis between sympatric, ecologically divergent crater-lake Midas cichlids (Lake Xiloá *Amphilophus amarillo* and *Amphilophus sagittae*). We pyrosequenced (Roche 454) expressed sequence tag (EST) libraries and generated more than 178 000 000 ESTs and identified nine ESTs under positive selection between these sister species ($Ka/Ks > 1$). None of these ESTs were found to be under selection in African cichlids. Of 11 candidate genes for ecomorphological differentiation in African cichlids, none showed signs of selection between *A. amarillo* and *A. sagittae*. Although more population-level studies are now needed to thoroughly document patterns of divergence during speciation of cichlids, available information so far suggests that adaptive phenotypic diversification in Neotropical and African cichlids may be evolving through non-parallel genetic bases.

Keywords: next-generation sequencing; cichlid fish; ecological speciation; coloration; body shape; expressed sequence tags

1. THE GENOMICS OF ADAPTATION AND SPECIATION IN CICHLIDS

Cichlid fishes are spectacularly species-rich and phenotypically diverse in morphology, behaviour and coloration, and therefore have become a ‘non-model’ model system for studying genomic diversification by natural and sexual selection [1–3]. Many of the more than 2000 species have diversified based on ecological niche within lakes and often in parallel within and across radiating lineages [2]. Frequently, many closely related species coexist that have diverged without geographical isolation and therefore presumably, or demonstrably, under divergent selection and through ecological speciation [4,5].

In part because of their relevance for basic evolutionary biology and speciation research, as well as the economic importance of tilapia, cichlid fishes are the focus of a multi-species genome sequencing effort [6]. As of early 2011, the tilapia genome (*Oreochromis*

niloticus) was completed and assembled, and whole genome sequencing of four other African Rift Lake species is near completion (F. Di Palma 2011, personal communication). These species will be great models for studying genomic divergence during adaptive radiation [7]; some genomic, linkage mapping or transcriptomic resources already exist for many of them (e.g. for the basal haplochromine *Astatotilapia burtoni* [8–11]). Cichlids have a moderately sized genome (approx. 1.1 Gb), can be bred and crossed in the laboratory for mapping and encompass an amazing morphological and behavioural phenotypic variability. Further, being approximately 113 ± 11 Myr diverged from medaka (*Oryzias latipes*) [12]—a model fish species with a fully sequenced and well-annotated genome—means that even in advance of whole genome sequencing for a cichlid species, there has been a flurry of genomic and transcriptomic research.

The aims of our present paper are twofold. First, we review recent advances in understanding adaptive radiation in cichlid fishes using genetic, genomic and transcriptomic approaches. To date, this research has primarily been focused on African cichlids. Second, to address the dearth of information on Neotropical cichlid adaptive radiations, we present a new study on the transcriptome divergence of two young, sympatric

*Author for correspondence (axel.meyer@uni-konstanz.de).

Electronic supplementary material is available at <http://dx.doi.org/10.1098/rstb.2011.0247> or via <http://rstb.royalsocietypublishing.org>.

One contribution of 13 to a Theme Issue ‘Patterns and processes of genomic divergence during speciation’.

Nicaraguan crater-lake cichlid species. Further, we address whether there are parallel genetic signals of selection across these African and Neotropical adaptive radiations and found surprisingly little congruence.

(a) *Niche, body shape and trophic apparatus*

Speciation in cichlid fishes involved extremely high levels of morphological divergence, primarily related to ecologically relevant variation in body shape and size, and the trophic apparatus [13]. Moulded by selective pressures of living in similar habitats or employing similar foraging preferences [14,15], African and Neotropical cichlid fishes have independently evolved parallel ecomorphs within and across their respective radiations [15,16], including elongate limnetic or predatory types, large jawed snail-crushing morphs, small-mouthed algae scrapers and thin-headed, thick-lipped crustacean suckers. Genomic differentiation associated with these rapidly evolving body, mouth and jaw shapes is an exciting—though so far little investigated—aspect of the genetics of speciation in cichlids.

Body shape varies greatly within cichlid adaptive radiations but may be relatively invariant in other, less species-rich lineages. Analysing transcriptome sequence data for African and Neotropical cichlid fishes, we recently identified accelerated evolution and signals of positive selection in the epithelial cell adhesion molecule (EPCAM) gene in the haplochromine ‘superflock’ cichlids in Lake Victoria relative to the species-poor basal tilapia (*O. niloticus*) lineage [17]. Functional analyses of EPCAM in zebrafish (*Danio rerio*) have shown its indispensable role in epithelial morphogenesis and skin development [18], making this a candidate gene for future analyses of body shape and trophic differentiation associated with adaptation in haplochromine cichlids.

Ecologically divergent cichlid species can differ dramatically in their jaw and dentition structures; there is a tight correlation between pharyngeal jaw morphology, dentition and foraging preference [4,19–21]. Thus, the pharyngeal jaw may be an evolutionary key innovation intrinsic to the rapid speciation of cichlid fishes [21,22] and the genetic basis of adaptive variation in jaws and dentition has been the focus of several studies. Albertson *et al.* [23,24] found that few loci were involved in the radiation of cichlid jaw apparatus but that these were under strong directional selection. In particular, bone morphogenetic protein 4 (*Bmp4*) is a critical locus responsible for mandibular morphological variation (reviewed in Albertson & Kocher [25]). Moreover, some genomic regions contain multiple quantitative trait loci (QTLs). For example, the QTLs for tooth, jaw and skull shape all mapped to the same interval in one linkage group [26]. Divergent selection on this genomic region may then affect multiple traits simultaneously and explain the covariation and parallel/convergent evolution often observed in cichlids [26]. Besides sequence variation in *Bmp4* [26,27], craniofacial differences may result from variation in gene expression. Through microarray experiments, significant expression differences were observed in the genes *cimp1* and *magp4* during head and jaw development in closely related Lake Victoria cichlids [28,29], suggesting the

importance of gene expression to phenotypic diversification within the species flock. However, the contributions of these differently expressed genes to morphological differences between species remain to be validated [30].

Dentition is also an excellent niche indicator for cichlid fishes: for example, the outer row of teeth of biting species is normally small but closely spaced and multi-cusped, in contrast to suction feeders’ large and loosely spaced teeth [25]. Tooth shape and cusp number are positively correlated to the number of teeth in Malawi cichlids [31] and this trait appears to be mainly controlled by a single gene [32]. Transcriptomic experiments have shown that Malawi cichlids with different dentition have variable spatio-temporal gene expression [33] of conserved, ancient dental gene networks [34]. Knowledge of the genetic basis of the trophic apparatus in cichlids may therefore illuminate the genetics of their rapid adaptation and speciation.

(b) *Coloration and patterning*

Unlike complex traits such as body shape, across many vertebrate taxa coloration tends to be of a simple genetic basis and therefore a more tractable target for comparative genomics [35,36]. Cichlids show an amazing breadth of coloration and patterning, and this has recently been a fruitful topic of genomic investigation for Neotropical and African species. For example, various species of the Neotropical Midas cichlid complex (*Amphilophus citrinellus* complex) have a melanic (‘dark’) and amelanic (‘gold’) phenotype (figure 1a), with gold determined by the dominant allele of a single locus [37]. This colour polymorphism is not sex-linked (in contrast to the common genetic pattern for gold African Rift Lake cichlids) and is the basis of assortative mating resulting in intraspecific genetic divergence in sympatry in at least one Nicaraguan crater lake; therefore, it may be a trait that is involved in incipient sympatric speciation [38]. Henning *et al.* [37] found that, although the expression of the gene *Mc1r* (a common candidate gene for coloration [35]) was upregulated in the skin of gold fishes, comparative genomic analyses identified no sequence polymorphism in *Mc1r* between gold and dark Midas cichlids. Further, none of the nearby single nucleotide polymorphisms assorted with colour in the mapping crosses nor colour polymorphic populations from the wild. An analysis of conserved non-coding elements surrounding the *Mc1r* locus, compared with the genomes of five model fish species, failed to identify relevant polymorphisms. Combined, this suggests that mutations in *Mc1r* or surrounding regions have no effect on the gold Midas phenotype and the causal genetic locus remains to be found.

In contrast, coloration is sex-linked in many African cichlids and may be associated with multiple loci [39]. Males of the Lake Malawi cichlid *Pseudotropheus saulosi* are blue and females are yellow. Gunter *et al.* [40] recently compared gene expression in the skin of both sexes/colours by cDNA microarray. Forty-five unique genes were differentially expressed in pooled tests and quantitative real-time PCR subsequently confirmed five at the individual level. The strongest candidate gene was *Copz-1*, which is known to have a conserved role in pigmentation [40] and is an

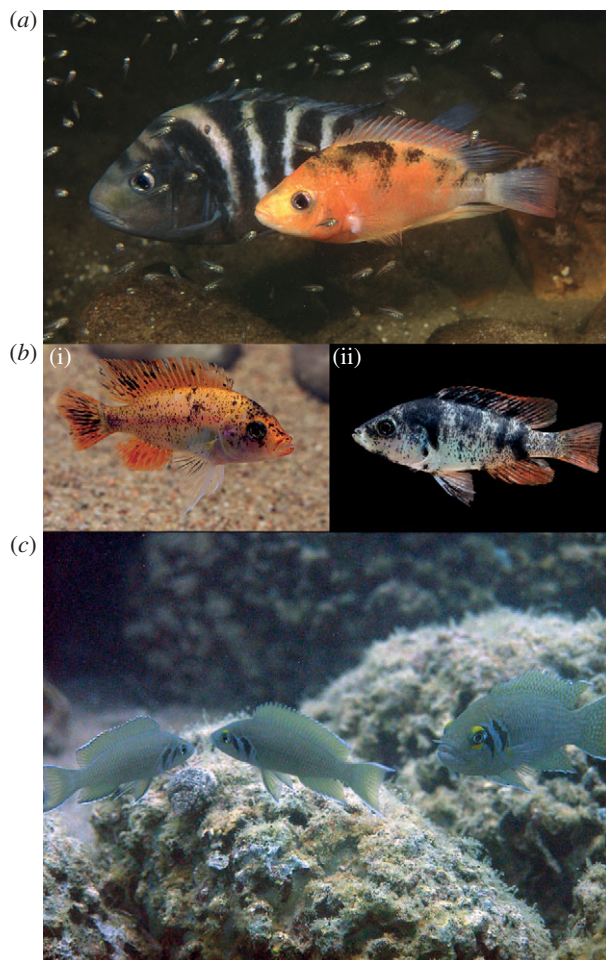


Figure 1. Cichlid fishes show a rich array of coloration and behavioural phenotypes that have recently been investigated using genomic and transcriptomic approaches. (a) A breeding pair of Midas cichlids (*Amphilophus xiloensis*) from crater Lake Xiloá, Nicaragua. The female has the 'gold' (amelanic) coloration and the male shows the typical 'dark' coloration of white and black bars. See §1b for more details. Photo credit: Ad Konings. (b) The haplochromine cichlid *Parabidochromis* 'red fin piebald' from Lake Victoria, Africa, showing (i) a typical orange blotch (OB) phenotype and (ii) a typical white blotch (WB) phenotype. See §1b,c for more details. Photo credit: P. Eriksson. (c) *Neolamprologus pulcher* is a cooperatively breeding cichlid from Lake Tanganyika. This image shows two helpers-at-the-nest (left) and a breeder female (right). See §1d for more details. Photo credit: J. Desjardins.

interesting focus of future investigation of the genetic basis of colour polymorphisms.

Although no difference was found in expression levels of the xanthophore-related candidate gene *colony-stimulating factor 1 receptor a* (*csf1ra*) between yellow and blue skin of *P. saulosi* [40], *csf1ra* is involved in the yellow pigmentation of the egg dummy colour patterning in other African cichlids [41]. Salzburger *et al.* [41] found that *csf1ra* is expressed in the egg spots of the haplochromine and Ectodini lineages. The molecular basis of egg dummies in haplochromine cichlids is possibly derived from a *de novo* substitution in the ligand-binding portion of *csf1ra*; analyses indicated adaptive sequence evolution in the ancestral lineage, which coincided phylogenetically with the emergence of egg dummies [41].

Across African cichlid radiations, sexual selection on colour pattern is one of the most important forces for speciation [42], suggesting that positive selection may be acting on the gene(s) responsible for coloration. Comparing a zebrafish colour pattern gene (*hagoromo*) between riverine and lacustrine cichlids, Terai *et al.* [43] identified signals of positive selection in the lacustrine species famous for their splendid body colours (table 1) and also found increased species-level variation in *hagoromo* alternative splicing [49]. Accelerated evolution and a cichlid-specific isoform of the pigmentation candidate gene *mitf* were also suggested as relevant for the rapid evolution of different colorations [50].

Orange-blotched (OB) and white-blotched (WB) are incompletely sex-linked colour pattern phenotypes found in cichlid radiations in different African lakes and their basins. OB and WB patterning (figure 1b), while melanin-disrupting and female-linked in all species tested for the radiations in lakes Malawi and Victoria, are determined by different genes [51]. Blotched phenotype in general is correlated with increased aggressive behaviour [52] and associated with sexual selection by male preference in Lake Victoria OB and WB species [43] and Lake Malawi OB species [49], such that only in polymorphic populations do males show a preference for blotched females. Therefore, this colour pattern may be a mechanism of rapid sympatric speciation by sexual selection [53–55] and represents a simple genetic basis of behavioural phenotypes.

Laboratory mapping crosses followed by association mapping of populations in nature pinpointed the causative locus of OB in Lake Malawi cichlids [56]. A single origin of the mutation in the Lake Malawi OB species was proposed, but there appears to have been an independent origin in Lake Victoria OB species. A single gene was found to be associated with the OB phenotype: *Pax7* expression is increased in tailfins of OB individuals in all three Lake Malawi species examined though no sequence differences were found in the *Pax7* coding regions [56].

Closely linked to coloration, the evolution of vision-related genes has been a focus of investigation in African cichlid fishes [5,46–48,57]. These studies of sequence and expression variation in opsin genes use a candidate gene approach (see [45] for an exception) rather than being broadly 'genomic', and therefore will not be discussed here (but see [3,58] for recent reviews). Our present analyses (table 1) that compare expressed opsin sequence patterns in African and Neotropical sister species identify few molecular parallelisms across lineages, but this remains to be investigated further.

(c) Sex determination

Because coloration and colour patterns are often sex-linked in cichlids, the link between sex ratios, genomic incompatibility and colour assortative mating means that speciation may be promoted by sex-determining genomic regions [55,56,59]. For example, sexually antagonistic selection can promote the evolution of a novel sex determiner if genetic conflict (locus-specific

Table 1. Candidate genes of African cichlid species related to vision and light perception, bone and tooth development, and morphology. Gene functions, major findings and samples used are drawn from the cited literature. These candidate genes were analysed for signals of selection between Neotropical species *Amphilophus amarillo* and *Amphilophus sagittae*. 'Shared coding region' indicates the per cent of EST coding region overlapping between *A. amarillo* and *A. sagittae* compared with the relevant available African cichlid dataset.

gene name and function	studied cichlid species and major findings	shared coding region (%)	selection signal in <i>A. amarillo</i> and <i>A. sagittae</i>
EPCAM morphology	two Midas cichlids, <i>Oreochromis niloticus</i> and three Lake Victoria cichlids. Positive selection on EPCAM was identified in the Lake Victoria lineage [17].	100	none, sequences identical
MHC class II immune and olfactory	two Malawi species, <i>Pseudotropheus fainzilberi</i> and <i>P. emmiltos</i> . Higher genetic divergence at putative antigen binding sites (ABS) in exon 2 of MHC class II gene [44].	100	$Ka/Ks = 0.3249$
BMP4 bone development	sixteen lacustrine and riverine habitat cichlids. Accelerated rate of evolution of BMP4 in lacustrine habitat cichlids [27].	56	$Ka = 0, Ks = 0.0107$
SPP120 fertilization	<i>Oreochromis niloticus</i> and six haplochromines. A subregion is under positive selection in African cichlids [45].	55	none, sequences identical
CSF1Ra coloration and egg spot	nineteen cichlid species from Eastern Africa. Extracellular ligand-binding and receptor-interacting domain were under positive selection in the ancestral haplochromine lineage, which coincided with the egg-dummies [41].	38	none, sequences identical
RH1 light perception	<i>Oreochromis niloticus</i> and 16 species from Lakes Tanganyika and Malawi. Different selection pressures were detected between species in the clear and turbid environments [46].	100	none, sequences identical
RH2 light perception	<i>Oreochromis niloticus</i> and 16 species from Lakes Tanganyika and Malawi. Different selection pressures were detected between species in the clear and turbid environments [46].	100	none, sequences identical
LWS light perception	twenty-two cichlid species from Lakes Malawi, Nabugabo and Victoria. Adaptive and functional genetic variations on this gene were identified in the Lake Victoria cichlids [47].	97	none, sequences identical
SWS1 light perception	sixty-three cichlid species from Lakes Malawi and Victoria. SWS1 harbours the greatest diversity of functionally critical sites compared to other opsin genes in Malawi cichlids [48].	94	none, sequences identical
SWS2a light perception	<i>Oreochromis niloticus</i> and 16 species from Lakes Tanganyika and Malawi. Different selection pressures were detected between species in the clear and turbid environments [46].	48	$Ka/Ks = 0.2740$

alleles that increase fitness of one sex but decrease fitness in the other) is thereby resolved [55,60]. It is proposed that, across lineages in African lakes, OB coloration may increase fitness by improving body camouflage [56] (although OB individuals are arguably more conspicuous, further testing is necessary [61]; A. Meyer, personal observation) but OB males may suffer reduced mating success because the species' typical nuptial coloration is lost [56]. It has been proposed that the genetic conflict inherent in the OB phenotype was resolved by the evolution of a dominant female determiner that is tightly linked with *Pax7*, making OB almost exclusively female and therefore no detriment to males [56].

Recent research on the genetic basis of sex identified that at least two sex chromosomes evolved during the radiation of Malawi cichlids [59]. Moreover, these two

sex chromosomes are not overlapping with the sex chromosomes of the Nile tilapia (*O. niloticus*), which are located at different chromosomal regions [59]. Given that sex determination is so variable in such a species-rich group as cichlid fishes suggests that they may provide an excellent model for studying the initial stages of sex chromosome evolution and its role in speciation [62].

(d) Social behaviour and breeding systems

There is a great variability and diversity of social and breeding behaviours in cichlids, and this may contribute to rapid speciation. The genetic basis of this behavioural variability and plasticity has recently been a focus of research using genomic and transcriptomic methods. There may be considerable sex-specific and species-specific gene regulation associated with breeding

systems such as monogamy or polygyny [63]. In the polygynous mating system of *A. burtoni*, social dominance and therefore reproductive potential is associated with differences in gonad size, growth, hormone levels and coloration. Social dominance is highly plastic and an individual male may switch between dominant and subordinate phenotypes and back (reviewed in [10]). By using a microarray approach, it was shown that dominant and subordinate males differ significantly in their expression levels of almost 5 per cent of the tested genes, including co-regulated gene sets of neuroendocrine pathways [56]. Female *A. burtoni* also differ in gene-expression levels depending on social context: those who witness their preferred male win a fight against another male had dramatically different expression of the ‘immediate early genes’ *c-fos* and *egr-1* in key social and reproductively relevant areas of the brain [64]. In a cooperatively breeding cichlid with helpers-at-the-nest, *Neolamprologus pulcher* (figure 1c), it was found that the expression of arginine vasotocin was higher in breeding fishes independent of their sex [65]. Three different genes were upregulated exclusively in helpers, and gene expression of breeding females was more similar to that of males than to helper females, suggesting that hierarchy rather than sex was the key modulating factor [65].

(e) Summary and suggested directions for future research

Research on speciation in cichlids has to date primarily focused on the species-rich flocks of the African Rift lakes. While abundant and rapid speciation makes African cichlids excellent models for evolutionary biology, research on the origins of species in these lakes is complicated by three factors. First, these lakes are old, and conditions such as water levels have fluctuated dramatically over time and impacted diversification rates and population connectivity [66–68], with the effect of clouding the geography of speciation. Second, given considerable time since common ancestry for many of these species-rich groups [66,67,69], it is difficult to know the environmental and ecological conditions that originally promoted speciation. Third, it has proved difficult or impossible to reconstruct the phylogenetic relationships for some of these young and serially hybridizing adaptive radiations [69–71], which impedes hypothesis testing.

A better context for testing the ecological conditions and genomic patterns of speciation are isolated and homogeneous environments with recently diverged sister species [62]. For this reason, the Neotropical adaptive radiation of Midas cichlid fishes (*A. citrinellus* species complex) is an ideal geographical, ecological and biological system in which to study the genomics of adaptation and speciation (reviewed in [15]). The crater lakes were seeded by Midas cichlids from the great lakes, Nicaragua and Managua, and then diversified rapidly in ecology and body shape [4,38,72–74].

2. TRANSCRIPTOME DIVERSIFICATION IN CICHLIDS

Several interesting and important questions remain to be addressed in genomic studies of cichlid radiations.

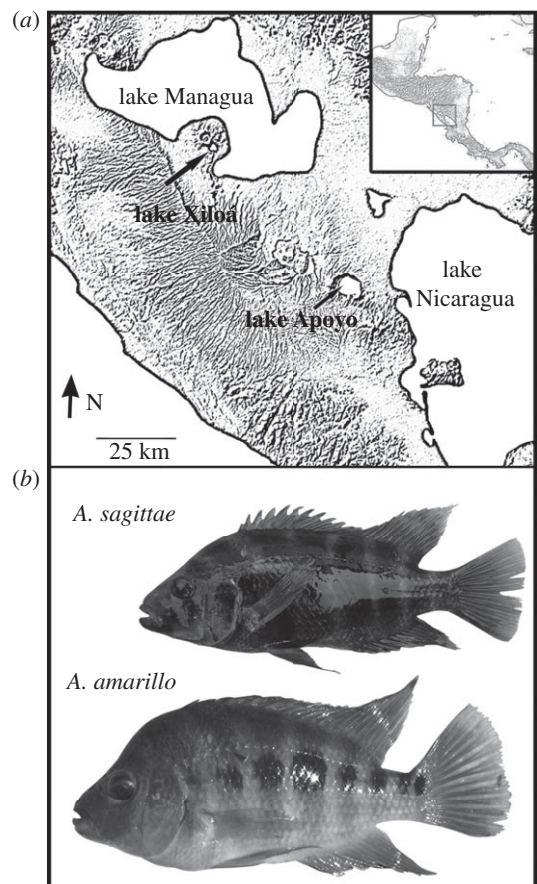


Figure 2. (a) Lake Xiloá is an isolated crater lake in western Nicaragua. Lake Apoyo is a larger and older crater lake to the south. (b) *Amphilophus amarillo* is a benthic and *Amphilophus sagittae* a limnetic Midas cichlid species.

For example, do genes that evolve under positive selection in adaptive radiations of African cichlids also contribute to the speciation of Neotropical cichlids, or vice versa? Genomic research has focused heavily on the speciation of African cichlids (table 1) and we know of only one study on Neotropical cichlids [75].

To address such questions of intra- and inter-adaptive radiation genome evolution, we analysed newly generated ESTs for two sympatric, endemic, ecologically divergent, very young species of Midas cichlid from the Nicaraguan crater lake Xiloá (*ca* 6 kyr old; figure 2). This species pair, *Amphilophus amarillo* and *Amphilophus sagittae*, diverged along a benthic–limnetic phenotypic axis [15,76], similar to the Midas species pair from the older crater lake Apoyo [4,75]. With the overall goal of assessing patterns of genetic parallelism in transcriptome evolution across cichlid lineages, we compared signals of divergent selection in the Neotropical adaptive radiation from Lake Xiloá with candidate gene sequences under divergent selection from the African intralacustrine adaptive radiations.

(a) Methods

We generated EST libraries following previous published methods [75]. Briefly, wild-caught *A. amarillo* and *A. sagittae* were bred in the laboratory (University of Konstanz) and sibs from a single brood of each species were sampled for RNA at 1 day ($n = 6$), one week ($n = 10$) and one month ($n = 2$) post-hatch. After pooling RNA equimolar for each stage per

species, cDNA was generated by random-priming, and normalized EST libraries were commercially prepared by Vertis Biotechnologie (Freising, Germany). Libraries were normalized in order to maximize the total length and number of ESTs sequenced, though this comes at the cost of gene-expression inference. Sequencing was carried out at the Genomics Centre of the University of Konstanz using Roche 454 FLX Titanium technology.

We adopted a previously implemented analysis pipeline [75] in which the ambiguous, low-quality sites and contigs less than 200 bp long were excluded. Putatively orthologous genes between species were determined by the bi-directional blast hit method. Coding regions of the putative orthologous genes were annotated by comparison with currently available vertebrate proteins. High-quality ESTs were defined as those in which sequences from both species contained coding regions with E-value $\leq 1E - 5$. These candidate genes were functionally annotated according to the latest version of the Uniprot database [77] and gene ontology was annotated by Blast2GO [78]. *Amphilophus* EST sequences were compared with all publicly available African cichlid ESTs. The ratio of non-synonymous to synonymous substitutions (K_a/K_s) was estimated with maximum likelihood in PAML v. 4 [79]; pairs with $K_a/K_s > 1$ were confirmed by outgroup comparison with African cichlids.

(b) Results and discussion

(i) Genome-wide estimates of selection in Neotropical cichlids

Sequencing generated a total of 780 104 and 1 000 805 raw reads for *A. amarillo* and *A. sagittae*, respectively, which assembled into a working dataset of 75 687 and 102 360 *A. amarillo* and *A. sagittae* EST contigs (average $n = 50$ size of 540 bp). We identified 39 466 putatively orthologous gene fragments between the two species. Given our stringent annotation criterion, this was reduced to 1612 pairs of high-quality ESTs.

Nine of these EST pairs showed a strong signal of positive selection ($K_a/K_s > 1$; 75–100% of the full-length gene; figure 3). Functional annotation indicated that most of these genes were related to cellular, metabolic and biological regulation processes (see electronic supplementary material, table S1). Several of these genes are reasonable candidate genes that might contribute to the biological differences between cichlid species. For example, the protein product of CLEC3B, tetranectin, is involved in the skeletal system development process and its deletion causes deformity in mice [80]. Also, the growth arrest and DNA-damage-inducible, gamma (GADD45G) gene is an important growth regulator and environmental response gene in humans [81,82]. These and others will be interesting candidates for future research on genomic patterns of diversification in the Midas cichlid complex.

The low number of genes under positive selection between *A. amarillo* and *A. sagittae* (nine out of 1612 ESTs, or 0.6%) agrees with the previous findings from Lake Apoyo Midas cichlids, wherein 0.8 per cent (14 of 1721) of shared ESTs were found to be under selection [75]. This also agrees with theoretical predictions

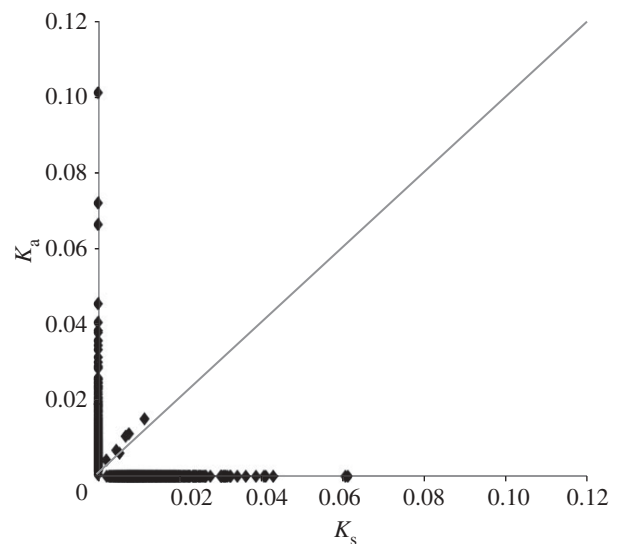


Figure 3. The distribution of K_a/K_s for high-quality ESTs between Lake Xiloá *A. amarillo* and *A. sagittae*. Expressed sequence tags with $K_a/K_s < 1$ fall above the grey line.

and empirical data that very few genes will diverge under positive selection in the early stage of speciation, whereas the remaining regions of the genome are indistinguishable ([30,83,84] and reviewed in Nosil *et al.* [85]). Identifying positive selection between very recently diverged species (less than 6 kya) can be limited by various factors and also our family-based samples. First, the positive selection signals between two young species, *A. amarillo* and *A. sagittae*, may be elevated by segregating polymorphisms in the ancestral species [86]. Adding samples from the ancestral species, *A. citrinellus*, will clarify the origin of the variation between the two species, such as lineage-specific mutations or standing variations [87]. Second, most genes we identify as being under positive selection have accumulated relatively few single nucleotide polymorphisms (SNPs) owing to the short divergence time between species [15]. As a result, it is difficult to distinguish whether selection on these genes has significance for evolution. Thus, functional tests of these genes or more rigorous statistical methods based on population samples [88] are needed in future studies.

(ii) Parallel molecular evolution between African and Neotropical cichlids

These Midas cichlid sister species differ in ecomorphological traits such as body shape [15], coloration, breeding depth and habitat [38,76], and diet and lower pharyngeal jaw shape [76]. Therefore, we tested for interspecific signals of selection at 11 previously published candidate genes associated with these aspects of diversification in the adaptive radiation of African cichlid fishes (table 1). We found that the EST coding region sequences of all these candidate genes either had no nucleotide substitutions between *A. amarillo* and *A. sagittae* or showed no signal of positive selection ($K_a/K_s \ll 1$; table 1).

The candidate genes from African cichlids that we tested in the Midas cichlids can be grouped into two basic categories: genes related primarily to

communication and sexual selection (e.g. colour and light perception) and genes related to morphology (e.g. body shape and trophic apparatus). The observation that none of these candidate genes shown previously to be involved in the adaptive radiation of African cichlid fishes exhibit a signal of positive selection in the orthologous genes between Midas cichlid species (table 1) suggests a non-parallel genetic basis across the New and Old World lineages of cichlids, at least specifically the flocks under comparison. We suggest four possible reasons for this finding.

First, it may be that the phenotypic targets of selection during Midas cichlid diversification are entirely different from those of African cichlids (for which ESTs have been sequenced to date), making the different genetic basis or non-parallel molecular signals of selection unsurprising. In this case, future contrasts of additional Neotropical and African species could potentially identify shared genetic signals of selection in ESTs if the contrasted species had experienced similar phenotypic selection. For example, sexual dimorphism in coloration is a hallmark of most African cichlid fishes and known to be a target of selection [5], whereas Midas cichlid fishes are not sexually dimorphic in colour. However, for phenotypic variation more under natural (rather than sexual) selection, such as in trophic apparatus [34], immunity (e.g. MHC complexes [44]) and vision [48], one might expect that the phenotypic targets of selection and their genetic bases may be the same between African and Neotropical lineages. This requires further investigation.

Alternatively, it may even be that equivalent ecomorphological differentiation and adaptation occurs by different genetic routes in African cichlids compared with Neotropical cichlids. In this case, even comparing parallel adaptive phenotypes across lineages would still identify non-overlap of genes under selection because the underlying genetic processes and architecture of parallel phenotypes might be entirely different.

Third, there might be genetic parallelism underlying phenotypic parallelism in Neotropical versus African cichlids that cannot be identified by examining the coding region of ESTs (e.g. from *cis*-regulatory elements). Other transcriptomic approaches that can infer abundance (e.g. RNA-Seq) and location (e.g. *in situ* staining) of variable gene expression would be required to identify this type of genomic parallelism.

Finally, there are limitations in the strength of our approach to infer positive selection between *A. amarillo* and *A. sagittae*. Family-based sampling with normalized libraries cannot quantify intraspecific polymorphism or lineage-specific fixation and could either over- or underestimate shared mutations. Thus, even if coding region mutations are informative about selection between species, our approach may lack power to detect it. This and previous studies [75] therefore act as a launch pad for future gene-specific and population-level approaches to transcriptome evolution in the Midas cichlid species complex (in preparation).

There are only a handful of examples in which the genetic bases of adaptations are known; therefore, it is too early to draw conclusions about the generalities of particular mechanisms. It is clear, however, that adaptive changes may not always involve the same genes,

even between closely related species (reviewed in earlier studies [3,89]). Only further genomic and transcriptomic comparisons between Neotropical and African cichlid adaptive radiations, ideally aided by mapping and whole genome comparisons, can discern these differences. All comparisons gain tremendously in power if made in an explicit phylogenetic framework.

3. CONCLUSIONS AND FUTURE DIRECTIONS

Cichlid fishes have long been an ecological and evolutionary model system for studying the formation of adaptive radiation and rapid speciation. In the age of genomics, cichlids are proving themselves even more to be an informative and accessible research system. Recent research on traits under ecological and/or sexual selection—such as ecological niche, jaws and teeth, coloration, reproductive behaviour, and sex determination—has been successful at exposing and quantifying underlying evolutionarily relevant genomic and transcriptomic variation. Candidate gene approaches, or traditional population genetic work, could not have identified the selected loci owing to their low frequency, though these loci appear to be important elements of genomic or transcriptomic differentiation. Recent insights highlight the advances that ‘next-generation’ technologies promise to yield. Soon, complete genomic sequences will permit better annotation, synteny analyses and information on the relevance of structural variation in the explosive rates of diversification of cichlid fishes. The advent of the genomic era in cichlid fish biology will therefore likely yield profound insights into fundamental questions in evolutionary biology.

This work was financially supported by a fellowship from University of Konstanz to S.F., an NSERC postdoctoral fellowship and a Young Scholars award (University of Konstanz) to K.R.E., and grants of the Deutsche Forschungsgemeinschaft to A.M. Fishes were collected with the authorization of MARENA, Nicaragua. We thank S. Selent and E. Hespeler for assistance with library preparation and sequencing and J. Sieling for assistance in the aquarium. Thanks to M. Pierotti and three anonymous reviewers for comments improving the manuscript, and P. Eriksson, S. Balshine and A. Konings for contributing images.

REFERENCES

- 1 Kuraku, S. & Meyer, A. 2008 Genomic analysis of cichlid fish ‘natural mutants’. *Curr. Opin. Genet. Dev.* **18**, 551–558. (doi:10.1016/j.gde.2008.11.002)
- 2 Salzburger, W. 2009 The interaction of sexually and naturally selected traits in the adaptive radiations of cichlid fishes. *Mol. Ecol.* **18**, 169–185. (doi:10.1111/j.1365-294X.2008.03981.x)
- 3 Elmer, K. R. & Meyer, A. 2011 Adaptation in the age of ecological genomics: insights from parallelism and convergence. *Trends Ecol. Evol.* **26**, 298–306. (doi:10.1016/j.tree.2011.02.008)
- 4 Barluenga, M., Stolting, K. N., Salzburger, W., Muschick, M. & Meyer, A. 2006 Sympatric speciation in Nicaraguan crater lake cichlid fish. *Nature* **439**, 719–723. (doi:10.1038/Nature04325)
- 5 Seehausen, O. et al. 2008 Speciation through sensory drive in cichlid fish. *Nature* **455**, 620–626. (doi:10.1038/Nature07285)
- 6 International Cichlid Genome Consortium. 2006 Genetic basis of vertebrate diversity: the cichlid fish model.

- See <http://www.genome.gov/Pages/Research/Sequencing/SeqProposals/CichlidGenomeSea.pdf>.
- 7 Nosil, P. & Feder, J. L. 2012 Genomic divergence during speciation: causes and consequences. *Phil. Trans. R. Soc. B* **367**, 332–342. (doi:10.1098/rstb.2011.0263)
 - 8 Lang, M., Miyake, T., Braasch, I., Tinnemore, D., Siegel, N., Salzburger, W., Amemiya, C. T. & Meyer, A. 2006 A BAC library of the East African haplochromine cichlid fish *Astatotilapia burtoni*. *J. Exp. Zool. B Mol. Dev. Evol.* **306**, 35–44. (doi:10.1002/jez.b.21068)
 - 9 Sanetra, M., Henning, F., Fukamachi, S. & Meyer, A. 2009 A microsatellite-based genetic linkage map of the cichlid fish, *Astatotilapia burtoni* (Teleostei): a comparison of genomic architectures among rapidly speciating cichlids. *Genetics* **182**, 387–397. (doi:10.1534/genetics.108.089367)
 - 10 Renn, S. C. P., Aubin-Horth, N. & Hofmann, H. A. 2008 Fish and chips: functional genomics of social plasticity in an African cichlid fish. *J. Exp. Biol.* **211**, 3041–3056. (doi:10.1242/Jeb.018242)
 - 11 Salzburger, W., Renn, S. C., Steinke, D., Braasch, I., Hofmann, H. A. & Meyer, A. 2008 Annotation of expressed sequence tags for the East African cichlid fish *Astatotilapia burtoni* and evolutionary analyses of cichlid ORFs. *BMC Genomics* **9**, 96. (doi:10.1186/1471-2164-9-96)
 - 12 Steinke, D., Salzburger, W. & Meyer, A. 2006 Novel relationships among ten fish model species revealed based on a phylogenomic analysis using ESTs. *J. Mol. Evol.* **62**, 772–784. (doi:10.1007/s00239-005-0170-8)
 - 13 Barlow, G. W. 2000 *The cichlid fishes: nature's grand experiment in evolution*. Cambridge, UK: Perseus Press.
 - 14 Clabaut, C., Bunje, P. M. E., Salzburger, W. & Meyer, A. 2007 Geometric morphometric analyses provide evidence for the adaptive character of the Tanganyikan cichlid fish radiations. *Evolution* **61**, 560–578. (doi:10.1111/j.1558-5646.2007.00045.x)
 - 15 Elmer, K. R., Kusche, H., Lehtonen, T. K. & Meyer, A. 2010 Local variation and parallel evolution: morphological and genetic diversity across a species complex of neotropical crater lake cichlid fishes. *Phil. Trans. R. Soc. B* **365**, 1763–1782. (doi:10.1098/rstb.2009.0271)
 - 16 Kocher, T. D., Conroy, J. A., McKaye, K. R. & Stauffer, J. R. 1993 Similar morphologies of cichlid fish in Lakes Tanganyika and Malawi are due to convergence. *Mol. Phylogenet. Evol.* **2**, 158–165. (doi:10.1006/mpev.1993.1016)
 - 17 Fan, S. H., Elmer, K. R. & Meyer, A. 2011 Positive Darwinian selection drives the evolution of the morphology-related gene, EPCAM, in particularly species-rich lineages of African cichlid fishes. *J. Mol. Evol.* **73**, 1–9. (doi:10.1007/s00239-011-9452-5)
 - 18 Slanchev, K., Carney, T. J., Stemmler, M. P., Koschorz, B., Amsterdam, A., Schwarz, H. & Hammerschmidt, M. 2009 The epithelial cell adhesion molecule EPCAM is required for epithelial morphogenesis and integrity during zebrafish epiboly and skin development. *PLoS Genet.* **5**, e1000563. (doi:10.1371/journal.pgen.1000563)
 - 19 Bouton, N., Seehausen, O. & van Alphen, J. J. M. 1997 Resource partitioning among rock-dwelling haplochromines (Pisces: Cichlidae) from Lake Victoria. *Ecol. Freshw. Fish.* **6**, 225–240. (doi:10.1111/j.1600-0633.1997.tb00165.x)
 - 20 Elmer, K. R., Lehtonen, T. K., Kautt, A. F., Harrod, C. & Meyer, A. 2010 Rapid sympatric ecological differentiation of crater lake cichlid fishes within historic times. *BMC Biol.* **8**, 60. (doi:10.1186/1741-7007-8-60)
 - 21 Liem, K. F. 1973 Evolutionary strategies and morphological innovations: cichlid pharyngeal jaws. *Syst. Zool.* **22**, 425–441. (doi:10.2307/2412950)
 - 22 Hulsey, C. D. 2006 Function of a key morphological innovation: fusion of the cichlid pharyngeal jaw. *Proc. R. Soc. B* **273**, 669–675. (doi:10.1098/rspb.2005.3375)
 - 23 Albertson, R. C., Strelman, J. T., Kocher, T. D. & Yelick, P. C. 2005 Integration and evolution of the cichlid mandible: the molecular basis of alternate feeding strategies. *Proc. Natl Acad. Sci. USA* **102**, 16 287–16 292. (doi:10.1073/pnas.0506649102)
 - 24 Albertson, R. C., Strelman, J. T. & Kocher, T. D. 2003 Genetic basis of adaptive shape differences in the cichlid head. *J. Hered.* **94**, 291–301. (doi:10.1093/jhered/esg071)
 - 25 Albertson, R. C. & Kocher, T. D. 2006 Genetic and developmental basis of cichlid trophic diversity. *Heredity* **97**, 211–221. (doi:10.1038/sj.hdy.6800864)
 - 26 Albertson, R. C., Strelman, J. T. & Kocher, T. D. 2003 Directional selection has shaped the oral jaws of Lake Malawi cichlid fishes. *Proc. Natl Acad. Sci. USA* **100**, 5252–5257. (doi:10.1073/pnas.0930235100)
 - 27 Terai, Y., Morikawa, N. & Okada, N. 2002 The evolution of the pro-domain of bone morphogenetic protein 4 (Bmp4) in an explosively speciated lineage of East African cichlid fishes. *Mol. Biol. Evol.* **19**, 1628–1632.
 - 28 Kijimoto, T., Watanabe, M., Fujimura, K., Nakazawa, M., Murakami, Y., Kuratani, S., Kohara, Y., Gojobori, T. & Okada, N. 2005 *cimp1*, a novel astacin family metalloproteinase gene from East African cichlids, is differentially expressed between species during growth. *Mol. Biol. Evol.* **22**, 1649–1660. (doi:10.1093/molbev/msi159)
 - 29 Kobayashi, N., Watanabe, M., Kijimoto, T., Fujimura, K., Nakazawa, M., Ikeo, K., Kohara, Y., Gojobori, T. & Okada, N. 2006 *magp4* gene may contribute to the diversification of cichlid morphs and their speciation. *Gene* **373**, 126–133. (doi:10.1016/j.gene.2006.01.016)
 - 30 Renaut, S., Maillet, N., Normandeau, E., Sauvage, C., Derome, N., Rogers, S. M. & Bernatchez, L. 2012 Genome-wide patterns of divergence during speciation: the lake whitefish case study. *Phil. Trans. R. Soc. B* **367**, 354–363. (doi:10.1098/rstb.2011.0197)
 - 31 Strelman, J. T., Webb, J. F., Albertson, R. C. & Kocher, T. D. 2003 The cusp of evolution and development: a model of cichlid tooth shape diversity. *Evol. Dev.* **5**, 600–608. (doi:10.1046/j.1525-142X.2003.03065.x)
 - 32 Strelman, J. T. & Albertson, R. C. 2006 Evolution of novelty in the cichlid dentition. *J. Exp. Zool. B Mol. Dev. Evol.* **306**, 216–226. (doi:10.1002/jez.b.21101)
 - 33 Fraser, G. J., Bloomquist, R. F. & Strelman, J. T. 2008 A periodic pattern generator for dental diversity. *BMC Biol.* **6**, 32. (doi:10.1186/1741-7007-6-32)
 - 34 Fraser, G. J., Hulsey, C. D., Bloomquist, R. F., Uyesugi, K., Manley, N. R. & Strelman, J. T. 2009 An ancient gene network is co-opted for teeth on old and new jaws. *PLoS Biol.* **7**, 233–247. (doi:10.1371/journal.pbio.1000031)
 - 35 Hubbard, J. K., Uy, J. A. C., Hauber, M. E., Hoekstra, H. E. & Safran, R. J. 2010 Vertebrate pigmentation: from underlying genes to adaptive function. *Trends Genet.* **26**, 231–239. (doi:10.1016/j.tig.2010.02.002)
 - 36 McKinnon, J. S. & Pierotti, M. E. R. 2010 Colour polymorphism and correlated characters: genetic mechanisms and evolution. *Mol. Ecol.* **19**, 5101–5125. (doi:10.1111/j.1365-294X.2010.04846.x)
 - 37 Henning, F., Renz, A. J., Fukamachi, S. & Meyer, A. 2010 Genetic, comparative genomic, and expression analyses of the Mc1r locus in the polychromatic Midas cichlid fish (Teleostei, Cichlidae *Amphilophus* sp.) species group. *J. Mol. Evol.* **70**, 405–412. (doi:10.1007/s00239-010-9340-4)
 - 38 Elmer, K. R., Lehtonen, T. K. & Meyer, A. 2009 Color assortative mating contributes to sympatric divergence of

- neotropical cichlid fish. *Evolution* **63**, 2750–2757. (doi:10.1111/j.1558-5646.2009.00736.x)
- 39 Barson, N. J., Knight, M. E. & Turner, G. F. 2007 The genetic architecture of male colour differences between a sympatric Lake Malawi cichlid species pair. *J. Evol. Biol.* **20**, 45–53. (doi:10.1111/j.1420-9101.2006.01228.x)
- 40 Gunter, H. M., Clabaut, C., Salzburger, W. & Meyer, A. 2011 Identification and characterization of gene expression involved in the coloration of cichlid fish using microarray and qRT-PCR approaches. *J. Mol. Evol.* **72**, 127–137. (doi:10.1007/s00239-011-9431-x)
- 41 Salzburger, W., Braasch, I. & Meyer, A. 2007 Adaptive sequence evolution in a color gene involved in the formation of the characteristic egg-dummies of male haplochromine cichlid fishes. *BMC Biol.* **5**, 51. (doi:10.1186/1741-7007-5-51)
- 42 Kocher, T. D. 2004 Adaptive evolution and explosive speciation: the cichlid fish model. *Nat. Rev. Genet.* **5**, 288–298. (doi:10.1038/nrg1316)
- 43 Terai, Y., Morikawa, N., Kawakami, K. & Okada, N. 2002 Accelerated evolution of the surface amino acids in the WD-repeat domain encoded by the hageromo gene in an explosively speciated lineage of east African cichlid fishes. *Mol. Biol. Evol.* **19**, 574–578.
- 44 Blais, J., Rico, C., van Oosterhout, C., Cable, J., Turner, G. F. & Bernatchez, L. 2007 MHC adaptive divergence between closely related and sympatric African cichlids. *PLoS ONE* **2**, e734. (doi:10.1371/journal.pone.0000734)
- 45 Gerrard, D. T. & Meyer, A. 2007 Positive selection and gene conversion in SPP120, a fertilization-related gene, during the east African cichlid fish radiation. *Mol. Biol. Evol.* **24**, 2286–2297. (doi:10.1093/molbev/msm159)
- 46 Spady, T. C., Seehausen, O., Loew, E. R., Jordan, R. C., Kocher, T. D. & Carleton, K. L. 2005 Adaptive molecular evolution in the opsin genes of rapidly speciating cichlid species. *Mol. Biol. Evol.* **22**, 1412–1422. (doi:10.1093/molbev/msi137)
- 47 Terai, Y., Mayer, W. E., Klein, J., Tichy, H. & Okada, N. 2002 The effect of selection on a long wavelength-sensitive (LWS) opsin gene of Lake Victoria cichlid fishes. *Proc. Natl Acad. Sci. USA* **99**, 15 501–15 506. (doi:10.1073/pnas.232561099)
- 48 Hofmann, C. M., O'Quin, K. E., Marshall, N. J., Cronin, T. W., Seehausen, O. & Carleton, K. L. 2009 The eyes have it: regulatory and structural changes both underlie cichlid visual pigment diversity. *PLoS Biol.* **7**, e1000266. (doi:10.1371/journal.pbio.1000266)
- 49 Terai, Y., Morikawa, N., Kawakami, K. & Okada, N. 2003 The complexity of alternative splicing of hageromo mRNAs is increased in an explosively speciated lineage in East African cichlids. *Proc. Natl Acad. Sci. USA* **100**, 12 798–12 803. (doi:10.1073/pnas.2132833100)
- 50 Sugie, A., Terai, Y., Ota, R. & Okada, N. 2004 The evolution of genes for pigmentation in African cichlid fishes. *Gene* **343**, 337–346. (doi:10.1016/j.gene.2004.09.019)
- 51 Seehausen, O., van Alphen, J. J. M. & Lande, R. 1999 Color polymorphism and sex ratio distortion in a cichlid fish as an incipient stage in sympatric speciation by sexual selection. *Ecol. Lett.* **2**, 367–378. (doi:10.1046/j.1461-0248.1999.00098.x)
- 52 Dijkstra, P. D., van Dijk, S., Groothuis, T. G. G., Pierotti, M. E. R. & Seehausen, O. 2009 Behavioral dominance between female color morphs of a Lake Victoria cichlid fish. *Behav. Ecol.* **20**, 593–600. (doi:10.1093/beheco/arp036)
- 53 Pierotti, M. E. R., Martin-Fernandez, J. A. & Seehausen, O. 2009 Mapping individual variation in male mating preference space: multiple choice in a color polymorphic cichlid fish. *Evolution* **63**, 2372–2388. (doi:10.1111/j.1558-5646.2009.00716.x)
- 54 Pierotti, M. E. R., Knight, M. E., Immler, S., Barson, N. J., Turner, G. F. & Seehausen, O. 2008 Individual variation in male mating preferences for female coloration in a polymorphic cichlid fish. *Behav. Ecol.* **19**, 483–488. (doi:10.1093/beheco/arm154)
- 55 Lande, R., Seehausen, O. & van Alphen, J. J. M. 2001 Mechanisms of rapid sympatric speciation by sex reversal and sexual selection in cichlid fish. *Genetica* **112**, 435–443. (doi:10.1023/A:1013379521338)
- 56 Roberts, R. B., Ser, J. R. & Kocher, T. D. 2009 Sexual conflict resolved by invasion of a novel sex determiner in Lake Malawi cichlid fishes. *Science* **326**, 998–1001. (doi:10.1126/science.1174705)
- 57 O'Quin, K. E., Hofmann, C. M., Hofmann, H. A. & Carleton, K. L. 2010 Parallel evolution of opsin gene expression in African cichlid fishes. *Mol. Biol. Evol.* **27**, 2839–2854. (doi:10.1093/molbev/msq171)
- 58 Carleton, K. 2009 Cichlid fish visual systems: mechanisms of spectral tuning. *Integr. Zool.* **4**, 75–86. (doi:10.1111/j.1749-4877.2008.00137.x)
- 59 Ser, J. R., Roberts, R. B. & Kocher, T. D. 2010 Multiple interacting loci control sex determination in Lake Malawi cichlid fish. *Evolution* **64**, 486–501. (doi:10.1111/j.1558-5646.2009.00871.x)
- 60 van Doorn, G. S. & Kirkpatrick, M. 2007 Turnover of sex chromosomes induced by sexual conflict. *Nature* **449**, 909–912. (doi:10.1038/Nature06178)
- 61 Maan, M. E., Eshuis, B., Haesler, M. P., Schneider, M. V., van Alphen, J. J. M. & Seehausen, O. 2008 Color polymorphism and predation in a Lake Victoria cichlid fish. *Copeia* **3**, 621–629. (doi:10.1643/Ce-07-114)
- 62 Coyne, J. A. & Orr, H. A. 2004 *Speciation*. Sunderland, MA: Sinauer Associates.
- 63 Machado, H. E., Pollen, A. A., Hofmann, H. A. & Renn, S. C. 2009 Interspecific profiling of gene expression informed by comparative genomic hybridization: a review and a novel approach in African cichlid fishes. *Integr. Comp. Biol.* **49**, 644–659. (doi:10.1093/icb/lcp080)
- 64 Desjardins, J. K., Klausner, J. Q. & Fernald, R. D. 2010 Female genomic response to mate information. *Proc. Natl Acad. Sci. USA* **107**, 21 176–21 180. (doi:10.1073/pnas.1010442107)
- 65 Aubin-Horth, N., Desjardins, J. K., Martei, Y. M., Balshine, S. & Hofmann, H. A. 2007 Masculinized dominant females in a cooperatively breeding species. *Mol. Ecol.* **16**, 1349–1358. (doi:10.1111/j.1365-294X.2007.03249.x)
- 66 Elmer, K. R., Reggio, C., Wirth, T., Verheyen, E., Salzburger, W. & Meyer, A. 2009 Pleistocene desiccation in East Africa bottlenecked but did not extirpate the adaptive radiation of Lake Victoria haplochromine cichlid fishes. *Proc. Natl Acad. Sci. USA* **106**, 13 404–13 409. (doi:10.1073/pnas.0902299106)
- 67 Salzburger, W., Mack, T., Verheyen, E. & Meyer, A. 2005 Out of Tanganyika: genesis, explosive speciation, key-innovations and phylogeography of the haplochromine cichlid fishes. *BMC Evol. Biol.* **5**, 17. (doi:10.1186/1471-2148-5-17)
- 68 Haberyan, K. A. & Hecky, R. E. 1987 The late Pleistocene and Holocene stratigraphy and paleolimnology of Lakes Kivu and Tanganyika. *Palaeogeogr. Palaeoclimatol. Palaeoecol.* **61**, 169–197. (doi:10.1016/0031-0182(87)90048-4)
- 69 Joyce, D. A., Lunt, D. H., Genner, M. J., Turner, G. F., Bills, R. & Seehausen, O. 2011 Repeated colonization and hybridization in Lake Malawi cichlids. *Curr. Biol.* **21**, 526. (doi:10.1016/j.cub.2011.02.044)
- 70 Seehausen, O. 2004 Hybridization and adaptive radiation. *Trends Ecol. Evol.* **19**, 198–207. (doi:10.1016/j.tree.2004.01.003)

- 71 Verheyen, E., Salzburger, W., Snoeks, J. & Meyer, A. 2003 Origin of the superflock of cichlid fishes from Lake Victoria, East Africa. *Science* **300**, 325–329. (doi:10.1126/science.1080699)
- 72 Barluenga, M. & Meyer, A. 2004 The Midas cichlid species complex: incipient sympatric speciation in Nicaraguan cichlid fishes? *Mol. Ecol.* **13**, 2061–2076. (doi:10.1111/j.1365-294X.2004.02211.x)
- 73 Barlow, G. W. 1976 The Midas cichlid in Nicaragua. In *Investigations of the Ichthyofauna of Nicaraguan lakes* (ed. T. B. Thorson), pp. 333–358. Lincoln, NE: University of Nebraska.
- 74 Barluenga, M. & Meyer, A. 2010 Phylogeography, colonization and population history of the Midas cichlid species complex (*Amphilophus* spp.) in the Nicaraguan crater lakes. *BMC Evol. Biol.* **10**, 326. (doi:10.1186/1471-2148-10-326)
- 75 Elmer, K. R., Fan, S., Gunter, H. M., Jones, J. C., Boekhoff, S., Kuraku, S. & Meyer, A. 2010 Rapid evolution and selection inferred from the transcriptomes of sympatric crater lake cichlid fishes. *Mol. Ecol.* **19**, 197–211. (doi:10.1111/j.1365-294X.2009.04488.x)
- 76 Vivas, R. & McKaye, K. R. 2001 Habitat selection, feeding ecology, and fry survivorship in the *Amphilophus citrinellus* species complex in Lake Xiloa. *J. Aquacult. Aq. Sci.* **IX**, 32–48.
- 77 Apweiler, R. *et al.* 2010 The universal protein resource (Uniprot) in 2010. *Nucleic Acids Res.* **38**, D142–D148. (doi:10.1093/Nar/Gkp846)
- 78 Conesa, A., Gotz, S., Garcia-Gomez, J. M., Terol, J., Talon, M. & Robles, M. 2005 Blast2GO: a universal tool for annotation, visualization and analysis in functional genomics research. *Bioinformatics* **21**, 3674–3676. (doi:10.1093/bioinformatics/bti610)
- 79 Yang, Z. 2007 PAML 4: phylogenetic analysis by maximum likelihood. *Mol. Biol. Evol.* **24**, 1586–1591. (doi:10.1093/molbev/msm088)
- 80 Iba, K., Durkin, M. E., Johnsen, L., Hunziker, E., Damgaard-Pedersen, K., Zhang, H., Engvall, E., Albrechtsen, R. & Wewer, U. M. 2001 Mice with a targeted deletion of the tetranectin gene exhibit a spinal deformity. *Mol. Cell. Biol.* **21**, 7817–7825. (doi:10.1128/MCB.21.22.7817-7825.2001)
- 81 Azam, N., Vairapandi, M., Zhang, W., Hoffman, B. & Liebermann, D. A. 2001 Interaction of CR6 (GADD45 gamma) with proliferating cell nuclear antigen impedes negative growth control. *J. Biol. Chem.* **276**, 2766–2774. (doi:10.1074/jbc.M005626200)
- 82 Ying, J. M., Srivastava, G., Hsieh, W. S., Gao, Z. F., Murray, P., Liao, S. K., Ambinder, R. & Tao, Q. 2005 The stress-responsive gene GADD45G is a functional tumor suppressor, with its response to environmental stresses frequently disrupted epigenetically in multiple tumors. *Clin. Cancer Res.* **11**, 6442–6449. (doi:10.1158/1078-0432.Ccr-05-0267)
- 83 Turner, T. L., Hahn, M. W. & Nuzhdin, S. V. 2005 Genomic islands of speciation in *Anopheles gambiae*. *PLoS Biol.* **3**, e285. (doi:10.1371/journal.pbio.0030285)
- 84 Harr, B. 2006 Genomic islands of differentiation between house mouse subspecies. *Genome Res.* **16**, 730–737. (doi:10.1101/Gr.5045006)
- 85 Nosil, P., Funk, D. J. & Ortiz-Barrientos, D. 2009 Divergent selection and heterogeneous genomic divergence. *Mol. Ecol.* **18**, 375–402. (doi:10.1111/j.1365-294X.2008.03946.x)
- 86 Peterson, G. I. & Masel, J. 2009 Quantitative prediction of molecular clock and Ka/Ks at short timescales. *Mol. Biol. Evol.* **26**, 2595–2603. (doi:10.1093/molbev/msp175)
- 87 Barrett, R. D. H. & Schluter, D. 2008 Adaptation from standing genetic variation. *Trends Ecol. Evol.* **23**, 38–44. (doi:10.1016/j.tree.2007.09.008)
- 88 Nielsen, R., Hellmann, I., Hubisz, M., Bustamante, C. & Clark, A. G. 2007 Recent and ongoing selection in the human genome. *Nat. Rev. Genet.* **8**, 857–868. (doi:10.1038/nrg2187)
- 89 Manceau, M., Domingues, V. S., Linnen, C. R., Rosenblum, E. B. & Hoekstra, H. E. 2010 Convergence in pigmentation at multiple levels: mutations, genes and function. *Phil. Trans. R. Soc. B* **365**, 2439–2450. (doi:10.1098/rstb.2010.0104)