

CADRE: the Central *Aspergillus* Data REpository 2012

Jane Mabey Gilsenan^{1,*}, John Cooley² and Paul Bowyer¹

¹School of Translational Medicine, University of Manchester and ²R&D Department, University IT Services, The University Hospital of South Manchester, Manchester M23 9LT, UK

Received September 15, 2011; Revised October 13, 2011; Accepted October 14, 2011

ABSTRACT

The Central *Aspergillus* Data REpository (CADRE; <http://www.cadre-genomes.org.uk>) is a public resource for genomic data extracted from species of *Aspergillus*. It provides an array of online tools for searching and visualising features of this significant fungal genus. CADRE arose from a need within the medical community to understand the human pathogen *Aspergillus fumigatus*. Due to the paucity of *Aspergillus* genomic resources 10 years ago, the long-term goal of this project was to collate and maintain *Aspergillus* genomes as they became available. Since our first release in 2004, the resource has expanded to encompass annotated sequence for eight other *Aspergilli* and provides much needed support to the international *Aspergillus* research community. Recent developments, however, in sequencing technology are creating a vast amount of genomic data and, as a result, we shortly expect a tidal wave of *Aspergillus* data. In preparation for this, we have upgraded the database and software suite. This not only enables better management of more complex data sets, but also improves annotation by providing access to genome comparison data and the integration of high-throughput data.

INTRODUCTION

Aspergillus is a genus of fungus, which has significant impact on human and animal welfare worldwide. Among this group are potent pathogens (1–3) causing invasive diseases, allergens, mycotoxin producers causing crop spoilage (4), as well as species used to our benefit in the food and drinks industries (5–7). Given the medical and industrial importance of *Aspergillus*, The Central *Aspergillus* Data REpository (CADRE) project was initiated in 2001 to support the international *Aspergillus*

research community by gathering all genomic information for this genus into one public resource.

Our first report in 2004 (8), presented data from a pilot study of clinical isolate *Aspergillus fumigatus* Af293 (9). *A. fumigatus* is the most common mould pathogen of humans, causing both life-threatening invasive diseases of immunocompromised patients and allergic disease in patients with atopic immune systems (3). With few effective antifungal drugs available (10,11), there was a need within the medical community to better understand this organism. CADRE was used to bring together the work of an international collaboration to sequence and annotate a selected region of this clinical isolate. Building on the success of this initial study, the full genome was sequenced (12) and managed within CADRE.

Over the last decade, 11 other genomes have been sequenced, 8 of which are currently available within CADRE. CADRE facilitates visualization and analyses of data using the Ensembl (13) software suite. Much of our data have been extracted from GenBank (14) and augmented using both automated and manual efforts, with support from AspGD (15), specific annotation projects and the general *Aspergillus* community. The expansion of data within CADRE has enabled us to support other projects directly, such as Ensembl Genomes (16) and the European-led *Aspergillus nidulans* reannotation project (17).

As the interest in comparing strains and species increases, we will manage genomes as they arise and aim to become a broad resource, providing data for all sequenced *Aspergilli* strains. CADRE is not the only *Aspergillus* resource currently available. Other resources, however, such as AspGD that provides in-depth annotation using manual efforts and the *Aspergillus* Comparative database (http://www.broadinstitute.org/annotation/genome/aspergillus_group/MultiHome.html) that provides tools for viewing comparative data are narrower in their use of selected strains. In order to offer a wider range of data, we have taken the first steps to improving our initial website: we have focused on the user interface and

*To whom correspondence should be addressed. Tel: + 0161 291 5909; Fax: + 0161 291 5806; Email: jane.gilsenan@manchester.ac.uk

relationships within the data content. We have made a significant jump in the Ensembl software version to provide users with a better page layout and to provide access to comparative data. In our collaboration with the Ensembl Genomes team, we have also established evolutionary relationships and performed genome-wide comparisons across the current genome content. With new data and an improved interface, users now have access to much richer *Aspergillus* information within CADRE.

SOURCE DATA AND CURRENT RELEASE

CADRE 3 has been implemented using Ensembl 59 and Ensembl Genomes 6 software suites. Ensembl is an annotation system and software suite devised for handling annotated eukaryotic genomes, its focus being mainly on higher eukaryotes. Ensembl Genomes complement this system by providing software to handle smaller eukaryotes and prokaryotes. We have used both systems and extended them by implementing specific plugins for CADRE.

The current release (January 2011) contains annotation pertaining to nine genomes initially extracted from GenBank: *A. fumigatus* Af293, *A. fumigatus* A1163 (18), *A. nidulans* FGSC A4 (19), *A. oryzae* RIB 40 (20), *A. niger* CIB 513.88 (21), *A. clavatus* NRRL 1 (18), *Neosartorya fischeri* NRRL 181 (18), *A. flavus* NRRL 3357 and *A. terreus* NIH 2624. The assemblies for *A. niger*,

A. oryzae and *A. nidulans* are based on data extracted from published and unpublished material. *A. nidulans* assembly and revised annotation have since been published (17) and submitted to GenBank (BN001301-BN001308). At the time of writing, eight new records, representing each *A. oryzae* chromosome, have been submitted by RefSeq (BA000049-BA000056). These have arisen from assembly description files (AGP) files recently made available by the Japanese consortium (20). As these new data affect the assembly only, we will seek to update our current *A. oryzae* assembly to reflect the RefSeq records.

SEARCH AND DISPLAY SOFTWARE

The CADRE home page provides links to all the genomes as well as a search box for searching each genome given general text or specific identifiers. For each genome, CADRE provides access to graphical views of assembled sequence and mapped features such as genes and transcripts. As the resource has grown, the predominant view has become the 'GeneView' (Figure 1) that imparts detailed information about a particular gene. The initial page presents a summary with information pertaining to public locus, genome location, related predicted transcripts and proteins, gene description and prediction methods. New features to this page are tabs along the top and a context-dependent menu down the left hand

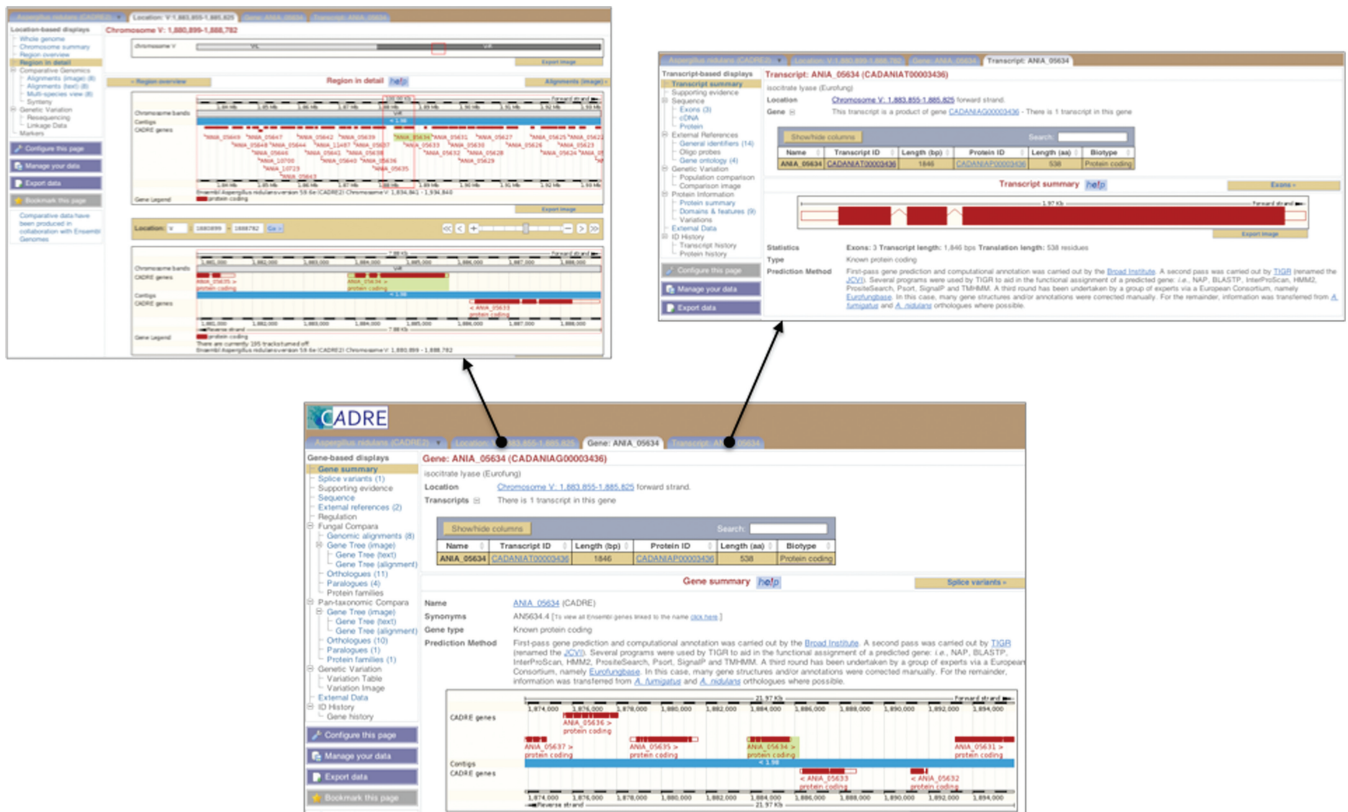


Figure 1. Screenshots of GeneView, TranscriptView and LocationView. The delivery of gene annotation (bottom) has changed within CADRE due to the increasing volume of information and cross-linking. To ease data assimilation, it has been split and managed (i) using tabs along the top to link to pages providing further information on transcripts (top right) and the location within the assembly (top left), and (ii) introducing a new menu on the left hand side, providing links to database cross-references and secondary data resulting from analyses.

side. The tabs link to background information, further information on related transcripts (TranscriptView) and a view of the gene within the assembly (LocationView). The menu down the left hand side provides a set of links to familiar annotations, such as sequence and database cross-references (e.g. AspGD), as well as to new ones that present information regarding comparative analyses. It also includes a link to a pop-up window for data export, which allows the user to extract a region or feature of interest. As this new menu is common to all implementations of Ensembl software, where data or tools are currently unavailable (e.g. this may arise where Ensembl Genomes software is not inline with Ensembl), the appropriate links are disabled.

TranscriptView (Figure 1) displays information about a particular transcript. The centre of the page provides a summary of the transcript structure and a link to protein information where applicable. Protein-related information consists of predicted peptide statistics and cross-references to family- or domain-based signatures [e.g. PRINTS (22) and Pfam (23)] detected by InterProScan (24). Links to protein information are also included in the left hand side menu. Other links provided in this menu provide highlighted exon, cDNA and protein sequences as well as database cross-references. The database cross-references section includes mapped gene ontology (GO) terms (25) and related entries in external protein databases such as UniProt (26).

LocationView (Figure 1) presents a high-level assembly view of the contigs, supercontigs or scaffolds, which constitute a genome as well as the features that have been mapped onto them. Three levels of detail are displayed within the view: the first presents an overview of the best assembled feature (e.g. chromosome), the second focuses on assembly components (e.g. contig) and the third presents features mapped at sequence level (e.g. 55 000 bp of a contig). Predicted genes are displayed parallel to the assembly in accordance with their position and orientation. The position of other features, such as tRNAs, repeats and start/stop codons, can also be shown alongside the genes. As with GeneView and TranscriptView, a new menu is provided to the left. Within this menu, links to summaries of the genome and selected chromosome are provided. Two new links (Alignments and Multi-species view) are also included for viewing the results of whole genome alignments and will be discussed further in the following section.

EXPLORING NEW FEATURES IN CADRE

While GeneView, TranscriptView and LocationView remain central to viewing genomic data within CADRE, several new features have been added to enable the incorporation of comparative data analyses. GeneView now includes fungal and pan-taxonomic comparative data (which can be accessed via the new context-dependant menu at the left hand side), and if no correlating data has been successfully detected, the hyperlinks are disabled. As we have collaborated with the Ensembl Genomes project, the 'Pan-taxonomic compara' section (Figure 2)

draws together data resulting from the analyses of representative genomes from all clades managed within the Ensembl and Ensembl Genomes databases (http://www.cadre-genomes.org.uk/info/docs/compara/homology_method.html#species). It is worth noting that these species are selected by the Ensembl Genomes management team to provide an overview of relationships across the broad taxonomic range, hence, not all *Aspergilli* are included. Data for orthologues, paralogues and gene trees have been calculated using the EnsemblCompara GeneTrees pipeline (27) that handles clustering, multiple sequence alignment and phylogenetic tree generation for translated genes. Protein family information is also available and has been generated by the Putative ORthologues Clusters (PROC) algorithm (<http://www.ebi.ac.uk/integr8>). This algorithm was developed as part of the Integr8 project (28) in order to group genes by the similarity of their longest protein product.

The 'Fungal compara' section (Figure 3) focuses on relationships between more closely related species and draws together the analyses of fungal genomes managed within the Ensembl Genomes database (Table 1). The results for this section differ from pan-taxonomic analyses as the full fungal component is utilized as opposed to a small number of representatives. As with the Pan-taxonomic section, it presents information regarding orthologues, paralogues and gene trees. Although, it does not provide information on protein families, it does include a link to pairwise genomic alignments between *Aspergilli*. Such alignments have been generated using Translated Blat Net, an approach used by Ensembl that combines techniques from Translated Blat (29) and BlastZ-net (30,31) pairwise alignment analyses. Within GeneView, this information is displayed in text format but it is also linked to images within LocationView.

LocationView has been expanded to accommodate the viewing of whole genome alignments in two main forms. The first is the alignment of two genomes: one is defined as the reference sequence to which matching segments of the other are extracted and aligned. This can be viewed within text or image format in the menu to the left (Figure 4). The second view is the alignment of two or more genomes: again one is defined as the reference to which others are aligned. In this case, they are aligned by assembly component (e.g. scaffold or contig) and the significantly similar regions are highlighted (Figure 4).

Another significant development within LocationView is the incorporation of functional genomic data from external sources. New low-cost high-throughput sequencing technology has led to the rise of whole transcriptome shotgun sequencing or RNA-seq, which yields information about the entire mRNA content of an organism under specific experimental conditions. *In silico*, this data can be used to improve gene prediction methods and to improve current annotation. As such information becomes available for *Aspergillus*, we wish to be able to incorporate it into the graphical views within CADRE, overlaying an annotated genome, and to improve annotation for current and future genomes. As a first step towards these goals, we have incorporated a link to an RNA-seq data set for *A. nidulans* (Figure 5), which has been made available

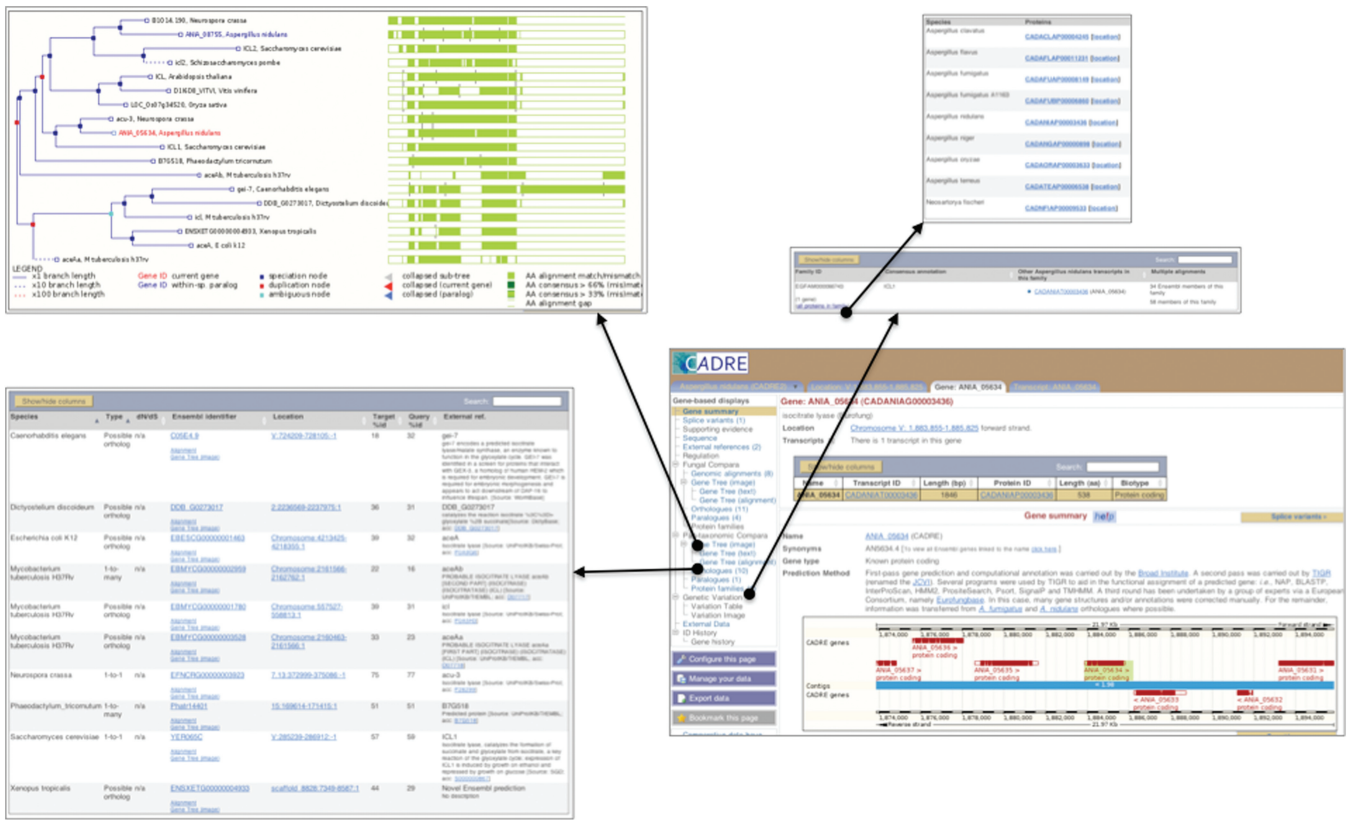


Figure 2. Screenshot of 'Pan-taxonomic Compara' data. CADRE now includes the means of viewing data resulting from comparative analyses for *Aspergillus* and several other representative genomes from the taxonomic range. This information can be accessed from the new context-dependent menu within GeneView and includes images of gene trees (top left) as well as lists of orthologues (bottom left), paralogues and protein families (top right).

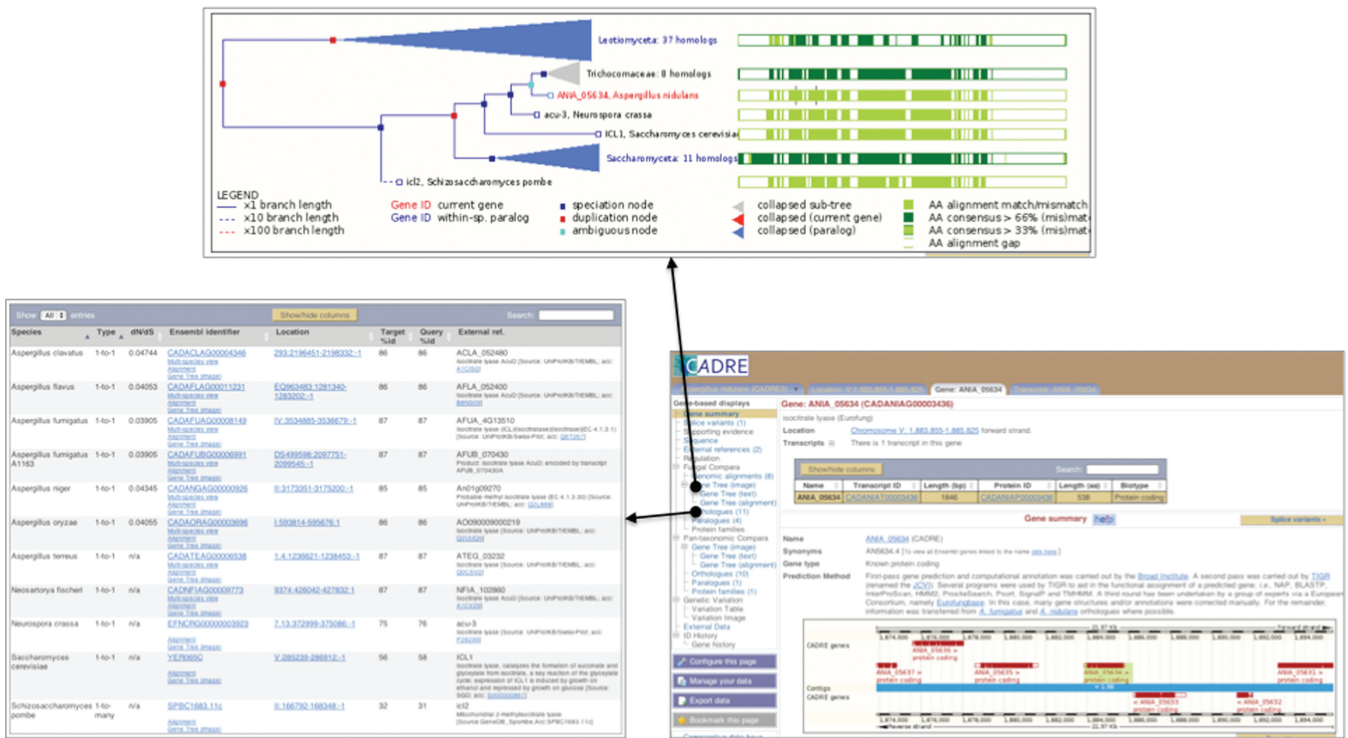


Figure 3. Screenshot of 'Fungal Compara' data. 'Fungal compara' is a new section within GeneView and provides links to data resulting from comparative analyses for all fungal species within Ensembl Genomes v6. This information can be accessed from the context-dependent menu at the left and includes images of genomic alignments, gene trees (top left) as well as list of orthologues (bottom left) and paralogues.

by the University of Liverpool (courtesy of Mark Caddick).

FUTURE DIRECTIONS

As always, our aim is to keep our current genome content as up-to-date as possible as well as adding new genomes as they become available. AspGD has released updated annotation for *A. nidulans* that merges annotation from the current CADRE version (GenBank BN001301-BN001308) with a version made available by the Broad Institute in 2009 (<http://www.broadinstitute.org/>

Table 1. List of species used for fungal comparative analyses

<i>Aspergillus clavatus</i> NRRL 1
<i>Aspergillus flavus</i> NRRL 3357
<i>Aspergillus fumigatus</i> Af293
<i>Aspergillus fumigatus</i> A1163
<i>Aspergillus nidulans</i> FGSC A4
<i>Aspergillus niger</i> CBS 513.88
<i>Aspergillus oryzae</i> RIB40
<i>Aspergillus terreus</i> NIH 2624
<i>Neosartorya fischeri</i> NRRL 181
<i>Neurospora crassa</i> ATCC 24698/74-OR23-1A/CBS 708.71/DSM 1257/FGSC 987
<i>Saccharomyces cerevisiae</i> S288C
<i>Schizosaccharomyces pombe</i> ATCC 38366/972

annotation/genome/aspergillus_group/MultiDownloads.html). We will endeavour to update this annotation as well as the previously mentioned *A. oryzae* assembly. As the participants of two current collaborative projects, SYBARIS (<http://www.sybaris-fp7.eu>) and Community Resources for *A. fumigatus* (gsc.jcvi.org/projects/gsc/a_fumigatus/index.shtml), we also expect to add annotation and RNA-seq data for three new *A. fumigatus* clinical isolates (Af210, Af10 and CEA10) in the coming months. To improve the incorporation of RNA-seq data, we are currently updating the Ensembl/Ensembl Genomes software as later versions compress the data for better viewing.

There are several areas that we aim to improve, one being the inclusion of user data. At present, Ensembl users are able to upload their own data for viewing within LocationView. This facility is provided by a button (Manage your data) under the new menu to the left of this page; however, it is currently disabled, as it requires further underlying database management. Enabling this facility in future versions will allow users to map their own data sets, such as gff or BAM files, to further enrich their view of existing annotated genomes within CADRE. Another service that will be addressed is the BLAST facility. This has been heavily used in previous versions but we are currently directing users to the BLAST service on our mirror site, Ensembl Genomes. There have been substantial changes to the installation of this service

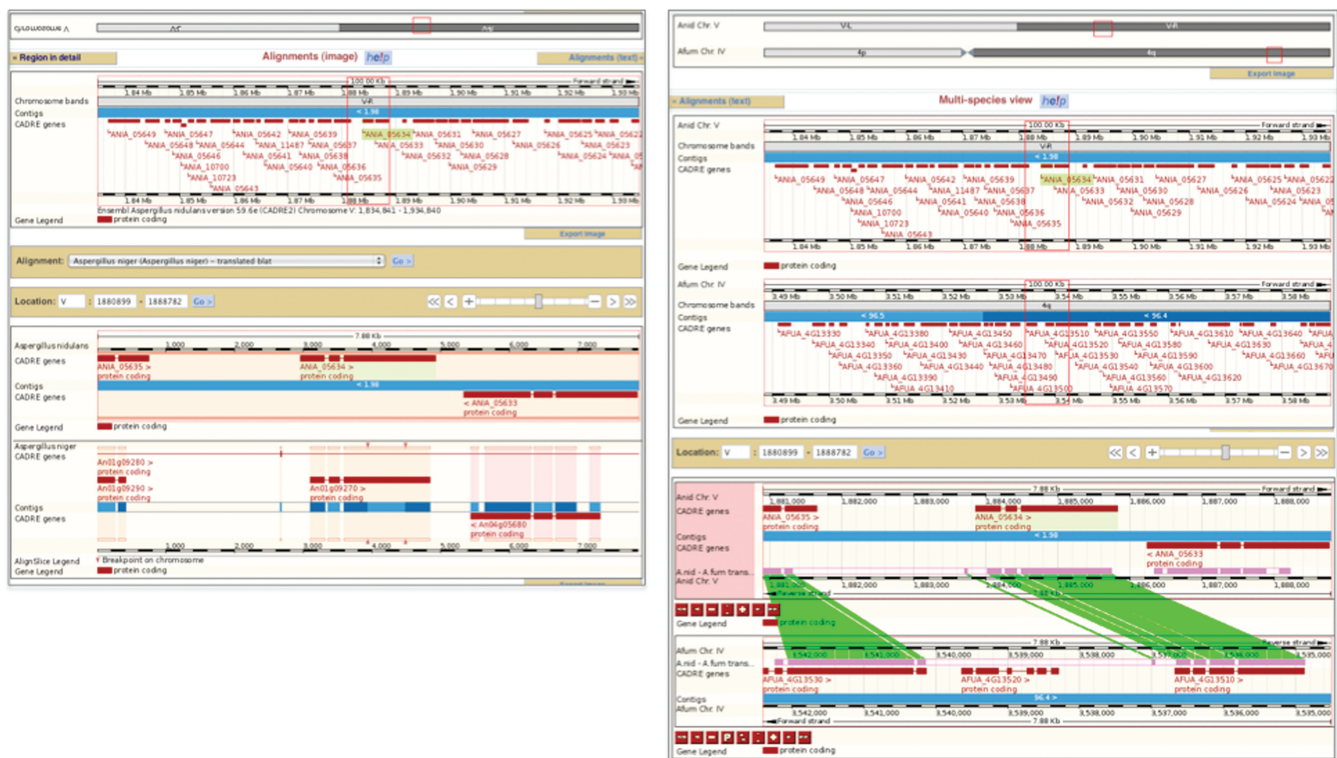


Figure 4. Screenshots of ‘AlignmentsView’ and ‘MultispeciesView’. Genomic alignments are available for *Aspergillus* species maintained within CADRE and can be accessed from either ‘LocationView’ or ‘GeneView’. ‘AlignmentsView’ (left) presents pairwise alignments as aligned segments of a query sequence to a reference sequence. In this example, *A. nidulans* is the reference sequence and *A. niger* is the query. ‘MultispeciesView’ (right) presents pairwise alignments as aligned regions and displays features as they are found in both assemblies. Significantly similar regions are highlighted.

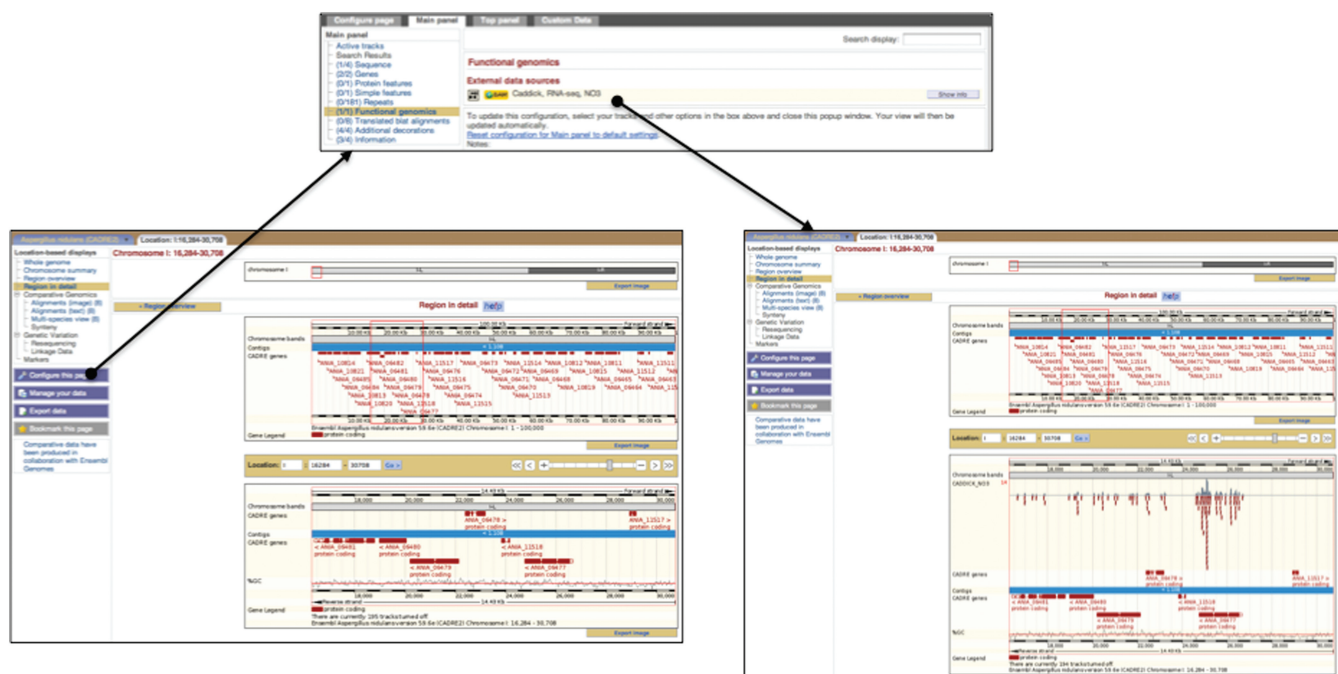


Figure 5. Screenshot of RNA-seq data. Using external data sources, features can be mapped onto existing annotation within 'LocationView' (left). This facility can be accessed via 'Configure this page', a blue button to the left of the page. On clicking this, a pop-up window (top right) appears with a list of configurable tracks. Selecting 'Functional genomics' provides a list of links to data that are provided by external researchers on their own servers and that can be switched on or off (bottom right). Different levels of information can be selected (normal, unlimited or coverage only), but we suggest the use of 'normal' or 'coverage only' due to the amount of data that has to be transferred from an external server.

between versions and we are currently bringing this into line for future release.

Finally, in response to the need for metabolic pathway data, we created AsperCyc (<http://www.aspercyc.org.uk>) (32), a publicly available sister resource containing gene annotation and predicted metabolic pathways. AsperCyc is a stand-alone resource but closely linked with CADRE: i.e. we have used annotated genomes extracted from CADRE and Pathway-tools (v14.5) software (33,34), to predict metabolic pathways for *Aspergilli*. AsperCyc currently contains eight reference *Aspergillus* genomes that we have cross-linked with CADRE, and we aim to bring this full circle by linking from CADRE to AsperCyc. As with CADRE, we will add new genomes to AsperCyc as they become available. Some aspects of our work on metabolic pathways are supported by the *Aspergillus*/Aspergillosis website (<http://www.aspergillus.org.uk>) and our joint efforts to maintain a medically biased genomics website, *Aspergillus* Genomes (<http://www.aspergillus-genomes.org.uk>) (35). It is hoped that, by coupling all these resources, we can greatly enrich and expand the range of data available to the *Aspergillus* research community.

ACKNOWLEDGEMENTS

The authors wish to thank Prof. David Denning (University of Manchester) for his continuing advice and support; the Ensembl Genomes team for their assistance and collaborative work; visiting students, Joose Rautemaa

and Neil Stewart, for their contribution to our work; and Paul Schofield (University IT Services, University Hospital of South Manchester) for his help in maintaining the machines serving CADRE and its sister resource AsperCyc.

FUNDING

SYBARIS project; EU Framework Programme 7 Collaborative Project (grant number 242220). Funding for open access charge: SYBARIS, FP7 project (grant number 242220).

Conflict of interest statement. None declared.

REFERENCES

- Denning, D.W. (1998) Invasive Aspergillosis. *Clin. Infect. Dis.*, **26**, 781–803.
- Latgé, J.-P. (1999) *Aspergillus fumigatus* and Aspergillosis. *Clin. Microbiol. Rev.*, **12**, 310–350.
- Marr, K.A., Patterson, T. and Denning, D. (2002) Aspergillosis. Pathogenesis, clinical manifestations, and therapy. *Infect. Dis. Clin. North Am.*, **16**, 875–894.
- Pitt, J.I. (2000) Toxicogenic fungi: which are important? *Med. Mycol.*, **38**(Suppl. 1), 17–22.
- Bennett, J.W. and Klich, M.A. (1999) In: Flickinger, M.C. and Drew, S.W. (eds), *Encyclopedia of Bioprocess Technology: Fermentation, Biocatalysis, and Bioprocessing*. John Wiley and Sons, Inc., New York, pp. 213–220.
- Nout, M.J. and Aidoo, K.E. (2002) In: Osiewacz, H.D. (ed.), *Industrial Applications*, Vol. X. Springer, Berlin, pp. 23–47.

7. Ruijter,G.J.G., Kubicek,C.P. and Visser,J. (2002)
In: Osiewicz,H.D. (ed.), *Industrial Applications*, Vol. X. Springer, Berlin, pp. 213–230.
8. Mabey,J.E., Anderson,M.J., Giles,P.F., Miller,C.J., Attwood,T.K., Paton,N.W., Bornberg-Bauer,E., Robson,G.D., Oliver,S.G. and Denning,D.W. (2004) CADRE: the Central *Aspergillus* Data Repository. *Nucleic Acids Res.*, **32**, D401–D405.
9. Pain,A., Woodward,J., Quail,M.A., Anderson,M.J., Clark,R., Collins,M., Fosker,N., Fraser,A., Harris,D., Larke,N. *et al.* (2004) Insight into the genome of *Aspergillus fumigatus*: analysis of a 922 kb region encompassing the nitrate assimilation gene cluster. *Fungal Genet. Biol.*, **41**, 443–453.
10. Denning,D.W., Venkateswarlu,K., Oakley,K.L., Anderson,M.J., Manning,N.J., Stevens,D.A., Warnock,D.W. and Kelly,S.L. (1997) Itraconazole resistance in *Aspergillus fumigatus*. *Antimicrob. Agents Chemother.*, **41**, 1364–1368.
11. Moore,C.B., Walls,C.M. and Denning,D.W. (2001) In vitro activities of terbinafine against *Aspergillus* species in comparison with those of itraconazole and amphotericin B. *Antimicrob. Agents Chemother.*, **45**, 1882–1885.
12. Nierman,W.C., Pain,A., Anderson,M.J., Wortman,J.R., Kim,H.S., Arroyo,J., Berriman,M., Abe,K., Archer,D.B., Bermejo,C. *et al.* (2005) Genomic sequence of the pathogenic and allergenic filamentous fungus *Aspergillus fumigatus*. *Nature*, **438**, 1151–1156.
13. Flicek,P., Amode,M.R., Barrell,D., Beal,K., Brent,S., Chen,Y., Clapham,P., Coates,G., Fairley,S., Fitzgerald,S. *et al.* (2011) Ensembl 2011. *Nucleic Acids Res.*, **39**, D800–D806.
14. Benson,D.A., Karsch-Mizrachi,I., Lipman,D.J., Ostell,J. and Sayers,E.W. (2011) GenBank. *Nucleic Acids Res.*, **39**, D32–D37.
15. Arnaud,M.B., Chibucos,M.C., Costanzo,M.C., Crabtree,J., Inglis,D.O., Lotia,A., Orvis,J., Shah,P., Skrzypek,M.S., Binkley,G. *et al.* (2010) The *Aspergillus* Genome Database, a curated comparative genomics resource for gene, protein and sequence information for the *Aspergillus* research community. *Nucleic Acids Res.*, **38**, D420–D427.
16. Kersey,P.J., Lawson,D., Birney,E., Derwent,P.S., Haimel,M., Herrero,J., Keenan,S., Kerhornou,A., Koscielny,G., Kahari,A. *et al.* (2010) Ensembl Genomes: extending Ensembl across the taxonomic space. *Nucleic Acids Res.*, **38**, D563–D569.
17. Wortman,J.R., Gilsonan,J.M., Joardar,V., Deegan,J., Clutterbuck,J., Andersen,M.R., Archer,D., Bencina,M., Braus,G., Coutinho,P. *et al.* (2009) The 2008 update of the *Aspergillus nidulans* genome annotation: a community effort. *Fungal Genet. Biol.*, **46**(Suppl. 1), S2–S13.
18. Fedorova,N.D., Khaldi,N., Joardar,V.S., Maiti,R., Amedeo,P., Anderson,M.J., Crabtree,J., Silva,J.C., Badger,J.H., Albarraq,A. *et al.* (2008) Genomic islands in the pathogenic filamentous fungus *Aspergillus fumigatus*. *PLoS Genet.*, **4**, e1000046.
19. Galagan,J.E., Calvo,S.E., Cuomo,C., Ma,L.J., Wortman,J.R., Batzoglou,S., Lee,S.I., Basturkmen,M., Spevak,C.C., Clutterbuck,J. *et al.* (2005) Sequencing of *Aspergillus nidulans* and comparative analysis with *A. fumigatus* and *A. oryzae*. *Nature*, **438**, 1105–1115.
20. Machida,M., Asai,K., Sano,M., Tanaka,T., Kumagai,T., Terai,G., Kusumoto,K., Arima,T., Akita,O., Kashiwagi,Y. *et al.* (2005) Genome sequencing and analysis of *Aspergillus oryzae*. *Nature*, **438**, 1157–1161.
21. Pel,H.J., de Winde,J.H., Archer,D.B., Dyer,P.S., Hofmann,G., Schaap,P.J., Turner,G., de Vries,R.P., Albang,R., Albermann,K. *et al.* (2007) Genome sequencing and analysis of the versatile cell factory *Aspergillus niger* CBS 513.88. *Nat. Biotechnol.*, **25**, 221–231.
22. Attwood,T.K., Bradley,P., Flower,D.R., Gaulton,A., Maudling,N., Mitchell,A.L., Moulton,G., Nardle,A., Paine,K., Taylor,P. *et al.* (2003) PRINTS and its automatic supplement, prePRINTS. *Nucleic Acids Res.*, **31**, 400–402.
23. Finn,R.D., Mistry,J., Tate,J., Coggill,P., Heger,A., Pollington,J.E., Gavin,O.L., Gunasekaran,P., Ceric,G., Forslund,K. *et al.* (2009) The Pfam protein families database. *Nucleic Acids Res.*, **38**, D211–D222.
24. Hunter,S., Apweiler,R., Attwood,T.K., Bairoch,A., Bateman,A., Binns,D., Bork,P., Das,U., Daugherty,L., Duquenne,L. *et al.* (2009) InterPro: the integrative protein signature database. *Nucleic Acids Res.*, **37**, D211–D215.
25. Barrell,D., Dimmer,E., Huntley,R.P., Binns,D., O'Donovan,C. and Apweiler,R. (2009) The GOA database in 2009—an integrated Gene Ontology Annotation resource. *Nucleic Acids Res.*, **37**, D396–D403.
26. Magrane,M. and Consortium,U. (2011) UniProt Knowledgebase: a hub of integrated protein data. *Database*, **2011**, bar009.
27. Vilella,A.J., Severin,J., Ureta-Vidal,A., Heng,L., Durbin,R. and Birney,E. (2009) EnsemblCompara GeneTrees: complete, duplication-aware phylogenetic trees in vertebrates. *Genome Res.*, **19**, 327–335.
28. Kersey,P., Bower,L., Morris,L., Horne,A., Petryszak,R., Kanz,C., Kanapin,A., Das,U., Michoud,K., Phan,I. *et al.* (2005) Integr8 and Genome Reviews: integrated views of complete genomes and proteomes. *Nucleic Acids Res.*, **33**, D297–D302.
29. Kent,W.J. (2002) BLAT—the BLAST-like alignment tool. *Genome Res.*, **12**, 656–664.
30. Kent,W.J., Baertsch,R., Hinrichs,A., Miller,W. and Haussler,D. (2003) Evolution's cauldron: duplication, deletion, and rearrangement in the mouse and human genomes. *Proc. Natl Acad. Sci. USA*, **100**, 11484–11489.
31. Schwartz,S., Kent,W.J., Smit,A., Zhang,Z., Baertsch,R., Hardison,R.C., Haussler,D. and Miller,W. (2003) Human-mouse alignments with BLASTZ. *Genome Res.*, **13**, 103–107.
32. Tuckwell,D., Denning,D.W. and Bowyer,P. (2011) A public resource for metabolic pathway mapping of *Aspergillus fumigatus* Af293. *Med. Mycol.*, **49**(Suppl. 1), S114–S119.
33. Karp,P.D., Paley,S. and Romero,P. (2002) The Pathway Tools software. *Bioinformatics*, **18**(Suppl. 1), S225–S232.
34. Karp,P.D., Paley,S.M., Krummenacker,M., Latendresse,M., Dale,J.M., Lee,T.J., Kaipa,P., Gilham,F., Spaulding,A., Popescu,L. *et al.* Pathway Tools version 13.0: integrated software for pathway/genome informatics and systems biology. *Brief. Bioinform.*, **11**, 40–79.
35. Mabey Gilsonan,J.E., Atherton,G., Bartholomew,J., Giles,P.F., Attwood,T.K., Denning,D.W. and Bowyer,P. (2009) *Aspergillus* genomes and the *Aspergillus* cloud. *Nucleic Acids Res.*, **37**, D509–D514.