

Aspergillus versicolor, a New Causative Agent of Canine Disseminated Aspergillosis

Shuping Zhang,^a Wayne Corapi,^a Erin Quist,^a Sarah Griffin,^b and Michael Zhang^c

Department of Veterinary Pathobiology^a and Department of Small Animal Clinical Sciences,^b College of Veterinary Medicine and Biomedical Science, and Texas Veterinary Medical Diagnostic Laboratory,^c Texas A&M University, College Station, Texas, USA

Disseminated aspergillosis in dogs has been associated with *Aspergillus terreus* or *A. deflexus* infection. We report a case of disseminated *A. versicolor* infection presenting as diskospondylitis, osteomyelitis, and pyelonephritis. The diagnosis was made based on clinical, radiographic, and pathological findings. The etiologic agent was identified by fungal culture and internal transcribed spacer (ITS) ribosomal DNA (rDNA) sequencing. This is the first description of canine aspergillosis caused by *A. versicolor*.

CASE REPORT

A 31-kg, 2.5-year-old male castrated German shepherd dog was examined at the Texas A&M University Veterinary Medicine Teaching Hospital because of nonambulatory paraparesis, weight loss, and hyporexia for 3 months. At admission, the dog had a body temperature of 104.6°F, heart rate of 160 beats/min, respiratory rate of 80 breaths/min, and blood pressure of 173/99 mm Hg. Neurological examination revealed a hyperreflexive patellar reflex bilaterally. Motor function was absent in the right pelvic limb and questionable in the left. The patient had marked generalized muscle atrophy. A lateral radiograph of the cranial thorax revealed lysis and shortening of the first four sternebrae (Fig. 1A). The second and third sternebrae were most severely affected and had irregular margins with loss of their end plates. Lateral radiographs of the thoracic vertebral column showed lysis and shortening of the 9th (T9) and 10th (T10) thoracic vertebrae with loss of the end plates and spondylosis deformans ventrally (Fig. 1B). Narrowing of the intervertebral space, end plate sclerosis, and ventral spondylosis deformans were also found between the seventh and eighth thoracic vertebrae. The clinical diagnoses were diskospondylitis involving T9-T10, osteomyelitis of the sternum and left humerus, and T3-L3 myelopathy resulting in nonambulatory paraparesis. Suspected causes included disseminated aspergillosis, blastomycosis, coccidioidomycosis, bacterial infection, and neoplasia. Due to the poor prognosis, the dog was subsequently euthanized and a complete necropsy was performed.

The major skeletal changes found at postmortem examination included marked bony proliferation of the cranial end of the sternum, extending from the first to the fourth sternebrae, with loss of the joint space between the second and third sternebrae (Fig. 2A). A soft gray area of necrotizing osteomyelitis was in the center of the collapsed and fused sternebrae. In the thoracic vertebral column, there was loss of the intervertebral disk at T9-T10 with lysis of the associated vertebral end plates (Fig. 2B). The latter changes resulted in joint instability, overriding of the vertebral bodies, and spinal cord compression that was exacerbated with ventroflexion of the vertebral column. In the kidneys, there was dark red to purple mottling of the cortical region with dozens of white to tan areas throughout the cortex and medulla (Fig. 2C). The renal crests were ulcerated, and the pelvises were dilated and contained a small amount of cloudy fluid with clumps of fibrin.

Samples of tissue from all major organs were placed in 10%

formalin and processed in a standard manner, and 4- μ m sections were stained with hematoxylin and eosin or Grocott's methenamine silver. Histologically, the affected sternebrae and vertebrae contained large, locally extensive areas of chronic granulomatous inflammation that replaced the marrow cavity and resulted in extensive areas of bone loss (Fig. 2D). Affected areas contained large numbers of epithelioid macrophages and many Langhans-type multinucleated giant cells that often surrounded clusters of poorly discernible septate fungal hyphae and bulbous spore-like structures (Fig. 2E). Grocott's methenamine silver-stained sections revealed large numbers of regularly septate fungal hyphae with 5- μ m-wide parallel walls; dichotomous branching; bulbous, 10- μ m-diameter terminal conidiophores; and occasional laterally branching spherical aleuriospores, whose morphology was consistent with *Aspergillus* spp. (Fig. 2F). Similar areas of granulomatous inflammation with intralesional fungal hyphae and bulbous structures were found in the kidney, spleen, and liver and sternal, vertebral, and axillary lymph nodes. Additionally, areas of granulomatous and necrotizing vasculitis were found in the kidneys and peristernal soft tissues.

Sternebral and vertebral swabs taken from affected areas of bone and a sample of kidney were cultured on Trypticase soy agar with 5% sheep blood, Sabouraud's dextrose agar, and potato dextrose agars (Remel, Lenexa, KS). After 1 week of incubation at room temperature, pure fungal growth was obtained. The surface of the fungal colonies, which had a downy texture, was initially white but turned to a light tan color after 7 days (Fig. 3A). The reverse side was yellow to brown. Microscopically, the colonies had brush-like and radiate conidial heads, ellipsoidal to round vesicles, biserial phialides, and spherical conidia in short chains (Fig. 3B). The morphological characteristics of the fungus were suggestive of *A. versicolor*. To confirm the identification, PCR amplification was performed on a sample of DNA extracted from the

Received 10 August 2011 Returned for modification 6 September 2011

Accepted 20 October 2011

Published ahead of print 26 October 2011

Address correspondence to Shuping Zhang, shupingzhang@cvm.tamu.edu.

Copyright © 2012, American Society for Microbiology. All Rights Reserved.

doi:10.1128/JCM.05388-11

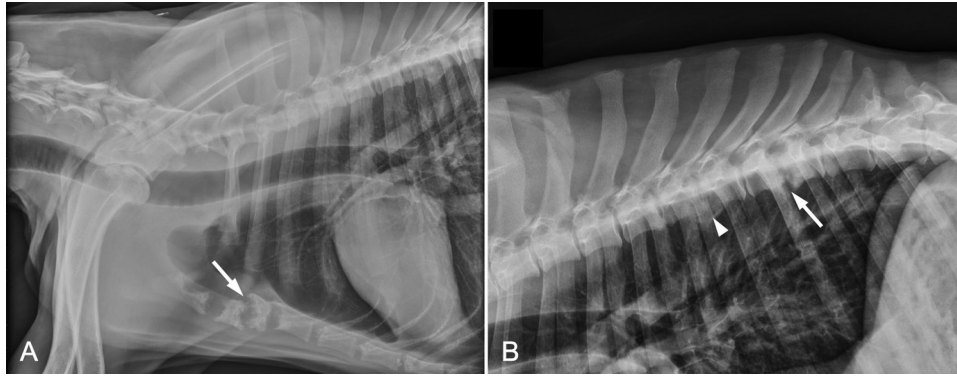


FIG 1 (A) Lateral radiograph of the thorax. There is lysis of the first four sternebrae and marked shortening of the second and third sternebrae, which have irregular margins and loss of the end plates (arrow). (B) Lateral radiograph of the thoracic vertebral column. There is end plate lysis of the 9th (T9) and 10th (T10) thoracic vertebrae that is centered on the intervertebral space (arrow), with spondylitis deformans ventrally. There is also narrowing, end plate sclerosis, and spondylitis deformans between the seventh (T7) and eighth (T8) vertebrae (arrowhead).

fungus to amplify the internal transcribed spacer (ITS) region of rRNA genes, using primers ITS-1 and ITS-4 (27). A BLAST search against the GenBank nr database showed 99.8% and 98.7% identities between the amplicon and the rRNA ITS regions of *A. versicolor* and *A. sydowii*, respectively. The amplicon sequence was then compared with the ITS sequences of *Aspergillus* species commonly associated with canine aspergillosis using the San Diego Supercomputer Center (SDSC) Biology Workbench nucleic acid tools. The results indicated that the isolate shared 97.3%, 88.8%, 87.2%, 85.9%, and 85.7% identities with *A. nidulans*, *A. deflexus*, *A. fumigatus*, *A. flavus*, and *A. terreus*, respectively. According to CLSI interpretive criteria for identification of bacteria and fungi by DNA target sequencing, the fungal isolate was identified as *A. versicolor* (34).

The genus *Aspergillus* has recently been classified into 8 distinct subgenera, including *Aspergillus*, *Fumigati*, *Circumdati*, *Terrei*, *Nidulantes*, *Ornati*, *Warcupi*, and *Candidi* (33). These subgenera are further divided into 22 sections, each of which encompasses a number of related species (33). Although there are more than 200 known species in the genus, only a small percentage are associated with infections. Among them, *A. fumigatus* (subgenus *Fumigati*, section *Fumigati*), *A. flavus* (subgenus *Circumdati*, section *Flavi*), and *A. niger* (subgenus *Circumdati*, section *Nigri*) are the most frequently encountered species (13, 17, 33). Others, such as *A. terreus* (subgenus *Terrei*, section *Terrei*) and *A. versicolor* (subgenus *Nidulantes*, section *Nidulantes*), are occasionally isolated from clinical specimens (3, 29). The disease conditions, ranging from localized skin infection, nail infection, ocular infection, and pulmonary disorder to invasive systemic *Aspergillus* infection causing diskospondylitis, osteomyelitis, and pyelonephritis, are collectively referred to as “aspergillosis,” an umbrella term coined by Hinson, Moon, and Plummer in 1952 (7, 30, 31, 38, 42).

In dogs, the three major forms of aspergillosis are nasal, bronchopulmonary, and disseminated infections. The nasal form, frequently accompanied by invasive sinusitis, occurs most commonly in medium to large, dolichocephalic or mesaticephalic breeds (32). The primary etiologic agent is *A. fumigatus*, followed by *A. flavus* and *A. niger* (39). The clinical signs include sneezing, unilateral or bilateral nasal discharge, rhinalgia, epistaxis, frontal

sinus osteomyelitis, anorexia, and lethargy (28, 32). In advanced cases, ulceration of the nares, facial deformity due to paranasal extension, and ocular involvement may be evident. Radiographs may show turbinate tissue destruction with large radiolucent spaces. Fungal plaques in the nasal cavity may be observed by rhinoscopy (28, 32). Bronchopulmonary aspergillosis is a rare disease in dogs (1, 40, 44). The causative agents and the breeds being affected are similar to those seen in the nasal form of aspergillosis (1, 5, 8, 25). The clinical signs are nonspecific, including depression, fever, and cough (1, 5, 25). Cytologic evaluation of the bronchoalveolar lavage fluid often reveals a mixed inflammatory response dominated by neutrophils and macrophages but rarely reveals the presence of fungal elements (5). Chest radiographs can demonstrate diffuse nodular lesions in the lung. Disseminated aspergillosis is a relatively infrequent but potentially fatal disease in dogs. The two most common etiologic agents are *A. terreus* and *A. deflexus*, followed by *A. fumigatus*, *A. niger*, and *A. flavipes* in order of decreasing frequency (37). Disseminated *A. terreus* infection in a dog was first reported in 1978 (45). This was followed by a description of disseminated *A. deflexus* infection in 4 dogs in 1986 (20). Additional case reports and case series have provided useful information regarding the etiology, clinical course, pathological changes, and prognosis pertaining to this disease (12, 14, 22, 24). In some of these cases, aleuriospores were observed in infected tissues, which led to the hypothesis that the ability of *A. terreus* and *A. deflexus* to produce aleuriospores enhances their ability to effectively disseminate via hematogenous routes (12, 20).

The majority of the reported cases of disseminated aspergillosis in dogs involve young to middle-aged females. A recent study of systemic aspergillosis in 30 dogs reported a mean age of 4.5 years, with a range of 2 to 8 years and a female-to-male ratio of approximately 3.1:1 (37). The German shepherd dog is the most commonly affected breed; however, other breeds, including the Dalmatian, English setter, pug, Rhodesian ridgeback, springer spaniel, and whippet, have occasionally been affected (21, 22, 37). Comparative studies of serum immunoglobulin concentrations in healthy dogs indicate that the IgA level in the German shepherd dog is significantly lower than that in other breeds (11, 18, 43). This IgA deficiency has been suggested as a possible predisposing factor for disseminated aspergillosis (11). German shepherd dogs

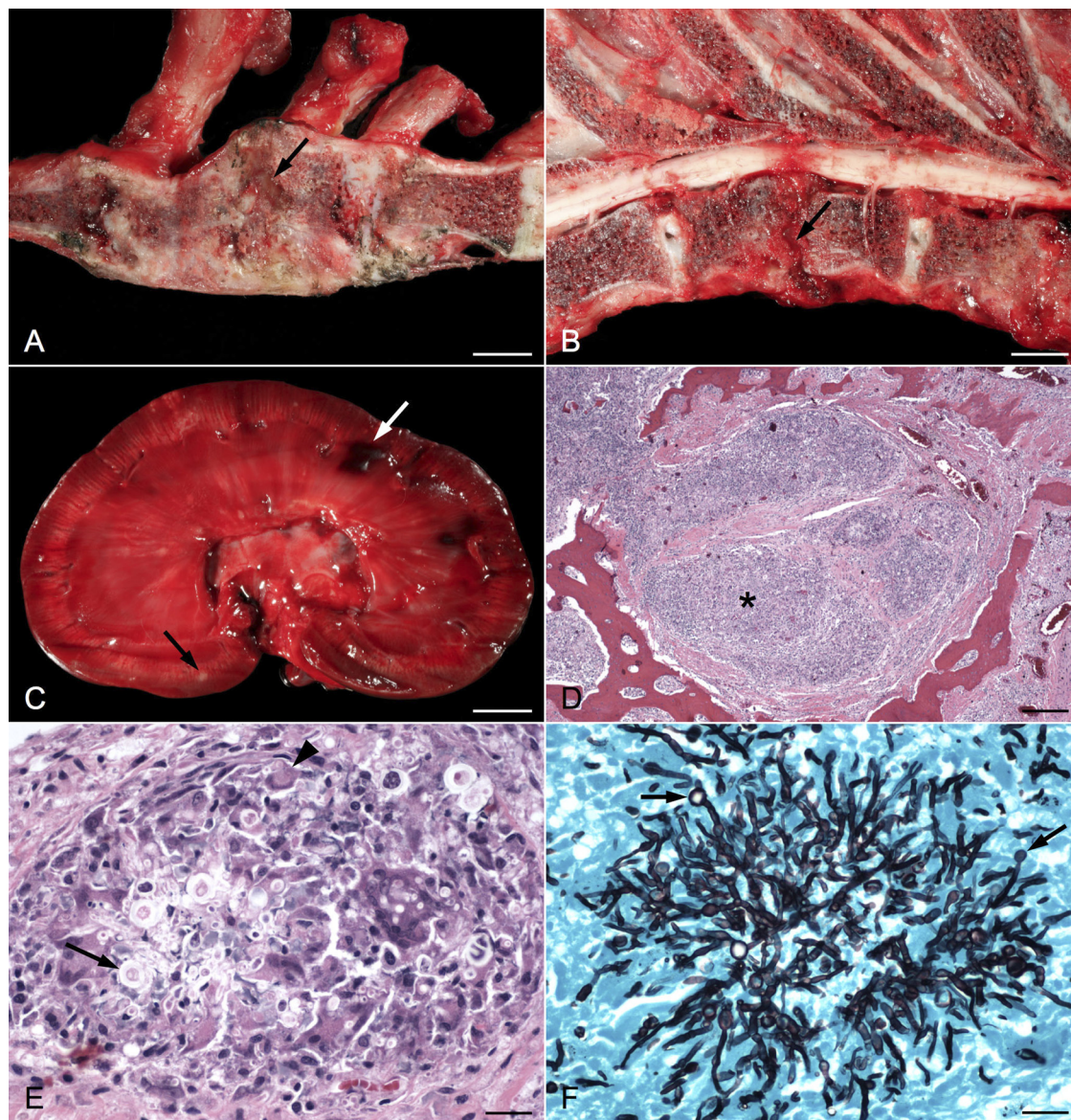


FIG 2 (A) Right sagittal section of sternum; the first sternebra is on the left. The second and third sternebrae are collapsed, and areas of bony proliferation obscure the joint space. An area of necrotizing osteomyelitis partially separates the two sternebrae (arrow). Bar, 1 cm. (B) Left sagittal section of thoracic vertebrae; the cranial end is to the right. The intervertebral disk at T9-T10 is missing (arrow). The end plates are eroded, and a wedge-shaped piece of tissue compresses the spinal cord dorsally. Bar, 1 cm. (C) Sagittal section of left kidney. Small white areas are scattered throughout the cortex and medulla (black arrow). The pelvis is dilated, and the renal crest is ulcerated. Areas of hemorrhage (white arrow) are visible in the cortex. Bar, 1 cm. (D) Photomicrograph of second sternebra showing areas of inflammation (*) and surrounding fibrous tissue invading and replacing the marrow cavity. Bar, 250 μ m. (E) Higher magnification of sternebra showing marked granulomatous inflammation with giant cell formation (arrowhead) surrounding septate fungal hyphae and bulbous spore-like structures (arrow). Bar, 25 μ m. (F) Grocott's methenamine silver-stained section of sternebra taken from same area as previous image, demonstrating prominent fungal hyphae and terminal conidiophores (arrows). Bar, 25 μ m.

with disseminated aspergillosis usually have normal complement activity and increased serum IgG levels. However, *Aspergillus*-specific serum antibody can be detected in only 44% to 69% of infected dogs, depending on the serological test used (10). Some infected German shepherd dogs have depressed IgM responses or impaired mitogen-induced lymphocyte transformation (9). These findings highlight the importance of humoral mucosal immunity and cell-mediated immunity in the prevention and clearance of *Aspergillus* infection (9). In the present case, tests were not performed to determine the immune status of the dog. A review of

medical records showed no history of specific immunosuppression; however, this could not rule out any undiagnosed immunodeficiency.

Clinical signs of disseminated aspergillosis may develop suddenly or slowly over a few months. Clinical presentations of disseminated aspergillosis may include diskospondylitis, osteomyelitis, spinal hyperpathia, vestibular abnormalities, ataxia, paraparesis, weight loss, anorexia, uveitis, lameness, renal failure, and respiratory distress (4, 6, 35, 37). Leukocytosis, hyperglobulinemia, azotemia, and hypercalcemia are common clinicopatho-

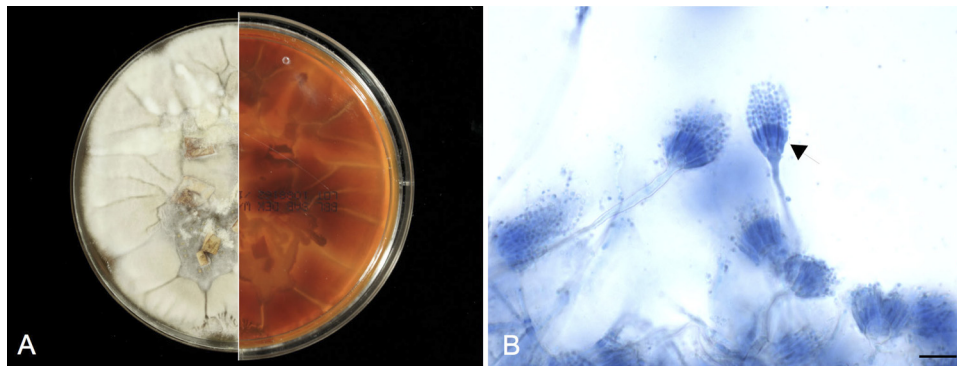


FIG 3 (A) Macroscopic colonial morphology of the *A. versicolor* isolate. The culture was incubated at room temperature for 10 days. The surface of the fungal colonies is white to light tan (left), and the reverse side is yellow to brown (right). (B) Lactophenol blue staining reveals brush-like and radiate conidial heads with round vesicles, biserial phialides (arrow), and spherical conidia in short chains. Bar, 15 μm .

logic features (37). Granulomatous inflammation in multiple organs, including bone, kidney, and spleen, is frequently observed (4, 6, 21, 35), as it was in the current case. The disease can generally be diagnosed based on clinical, radiographic, and pathological findings. Since disseminated mycosis caused by other fungal species, including *Penicillium* spp., may mimic disseminated aspergillosis (37), fungal culture is necessary to confirm the clinical diagnosis and identify the specific organism involved. Treatment of disseminated aspergillosis is difficult, and the prognosis is usually unfavorable. Retrospective studies indicate that the disease is refractory to amphotericin B treatment (37, 45). Long-term treatment of up to 3 years with itraconazole may clear the infection or prolong the survival time (24). Although the causes of therapeutic failure are multifactorial, delayed initiation of treatment is certainly a major reason, as the dogs are usually presented in advanced stages of the infection. In addition, fungal resistance to chemotherapeutic agents is another key contributing factor. Analyses of *in vitro* antifungal susceptibility patterns of various *Aspergillus* isolates suggest that non-*A. fumigatus* *Aspergillus* species are intrinsically resistant to amphotericin B (41).

In the present case, the dog was presented with advanced disease and a portal of entry for *A. versicolor* was not identified by clinical or postmortem examinations. We hypothesized that fungal spores gained entry through inhalation or an open wound that had healed at the time of examination. Subsequent hematogenous dissemination was possible because the fungal species did produce terminal and lateral spores in the infected tissue (Fig. 2F). The clinical and pathological changes of the present case resembled those caused by *A. terreus* and *A. deflexus*. Due to the severity of the disease and the poor prognosis, antifungal therapy was not initiated. Like other species of *Aspergillus*, *A. versicolor* is ubiquitous in nature and can be isolated from soil, water, organic matter, bathrooms, carpets, and mattresses (2, 15, 16). It is commonly found on water-damaged building material such as wallpaper or fiberboard insulation. *A. versicolor* infections in people have been associated with onychomycosis and pulmonary aspergillosis (19, 29, 30). Mycotoxins produced by *A. versicolor* such as sterigmatocystin have been shown to cause DNA damage *in vitro* and are potentially carcinogenic (36). *A. versicolor* has been implicated in a case of equine subcutaneous mycetoma and two cases of equine guttural pouch mycosis (23, 26). The findings from the present case indicate that *A. versicolor* should be considered one of the causative agents of canine disseminated aspergillosis.

ACKNOWLEDGMENTS

We thank Jay Griffin for assistance in interpretation of the radiographs and Amanda Engram for technical assistance.

REFERENCES

- Adamama-Moraitou KK, et al. 2011. *Aspergillus fumigatus* bronchopneumonia in a Hellenic shepherd dog. *J. Am. Anim. Hosp. Assoc.* 47:e13–e18.
- Andersen B, Frisvad JC, Søndergaard I, Rasmussen IS, Larsen LS. 2011. Associations between fungal species and water-damaged building materials. *Appl. Environ. Microbiol.* 77:4180–4188.
- Balajee SA. 2009. *Aspergillus terreus* complex. *Med. Mycol.* 47(Suppl. 1):S42–S46.
- Berry WL, Leisewitz AL. 1996. Multifocal *Aspergillus terreus* discospondylitis in two German shepherd dogs. *J. S. Afr. Vet. Assoc.* 67:222–228.
- Billen F, Clercx C, Le Garerrès A. 2009. Effect of sampling method and incubation temperature on fungal culture in canine sinonasal aspergillosis. *J. Small Anim. Pract.* 50:67–72.
- Bruchim Y, Elad D, Klainbart S. 2006. Disseminated aspergillosis in two dogs in Israel. *Mycoses* 49:130–133.
- Camus M, et al. 2010. Primary cutaneous aspergillosis in an immunocompetent farmworker. *Ann. Dermatol. Venereol.* 137:373–376.
- Clercx C, McEntee K, Snaps F, Jacquinet E, Coignoul F. 1996. Bronchopulmonary and disseminated granulomatous disease associated with *Aspergillus fumigatus* and *Candida* species infection in a golden retriever. *J. Am. Anim. Hosp. Assoc.* 32:139–145.
- Day MJ, Eger CE, Shaw SE, Penhale WJ. 1985. Immunologic study of systemic aspergillosis in German shepherd dogs. *Vet. Immunol. Immunopathol.* 9:335–347.
- Day MJ, Penhale WJ. 1988. Humoral immunity in disseminated *Aspergillus terreus* infection in the dog. *Vet. Microbiol.* 16:283–294.
- Day MJ, Penhale WJ. 1988. Serum immunoglobulin A concentrations in normal and diseased dogs. *Res. Vet. Sci.* 45:360–363.
- Day MJ, et al. 1986. Disseminated aspergillosis in dogs. *Aust. Vet. J.* 63:55–59.
- de Hoog GS, Guarro J, Gene J, Figueras MJ. 2000. Atlas of clinical fungi, 2nd ed. Centraalbureau voor Schimmelcultures/Universitat Rovira i Virgili, Utrecht, The Netherlands.
- Elad D, Lahav DD, Blum S. 2008. Transuterine transmission of *Aspergillus terreus* in a case of disseminated canine aspergillosis. *Med. Mycol.* 46:175–178.
- Engelhart S, et al. 2002. Occurrence of toxigenic *Aspergillus versicolor* isolates and sterigmatocystin in carpet dust from damp indoor environments. *Appl. Environ. Microbiol.* 68:3886–3890.
- Flanning B, Samson RA, Miller DJ (ed). 2001. Microorganisms in home and indoor work environments: diversity, health impacts, investigation and control. Taylor and Francis, New York, NY.
- Greub G, Bille J. 1998. *Aspergillus* species isolated from clinical specimens: suggested clinical and microbiological criteria to determine significance. *Clin. Microbiol. Infect.* 4:710–716.
- Griot-Wenk ME, et al. 1999. Total serum IgE and IgA antibody levels in

- healthy dogs of different breeds and exposed to different environments. *Res. Vet. Sci.* 67:239–243.
19. Hinson KF, Moon AJ, Plummer NS. 1952. Bronchopulmonary aspergillosis; a review and a report of eight new cases. *Thorax* 7:317–333.
 20. Jang SS, Dorr TE, Biberstein EL, Wong A. 1986. *Aspergillus deflexus* infection in four dogs. *J. Med. Vet. Mycol.* 24:95–104.
 21. Kabay MJ, Robinson WF, Huxtable CR, McAleer R. 1985. The pathology of disseminated *Aspergillus terreus* infection in dogs. *Vet. Pathol.* 22: 540–547.
 22. Kahler JS, Leach MW, Jang S, Wong A. 1990. Disseminated aspergillosis attributable to *Aspergillus deflexus* in a springer spaniel. *J. Am. Vet. Med. Assoc.* 197:871–874.
 23. Keegan KG, Dillavou CL, Turnquist SE, Fales WH. 1995. Subcutaneous mycetoma-like granuloma in a horse caused by *Aspergillus versicolor*. *J. Vet. Diagn. Invest.* 7:564–567.
 24. Kelly SE, Shaw SE, Clark WT. 1995. Long-term survival of four dogs with disseminated *Aspergillus terreus* infection treated with itraconazole. *Aust. Vet. J.* 72:311–313.
 25. Kim SH, et al. 2003. *Aspergillus niger* pulmonary infection in a dog. *J. Vet. Med. Sci.* 65:1139–1140.
 26. Ludwig A, Gatineau S, Reynaud MC, Cadoré JL, Bourdoiseau G. 2005. Fungal isolation and identification in 21 cases of guttural pouch mycosis in horses (1998–2002). *Vet. J.* 169:457–461.
 27. Manter DK, Vivanco JM. 2007. Use of the ITS primers, ITS1F and ITS4, to characterize fungal abundance and diversity in mixed-template samples by qPCR and length heterogeneity analysis. *J. Microbiol. Methods* 71: 7–14.
 28. Meler E, Dunn M, Lecuyer M. 2008. A retrospective study of canine persistent nasal disease: 80 cases (1998–2003). *Can. Vet. J.* 49:71–76.
 29. Moreno G, Arenas R. 2010. Other fungi causing onychomycosis. *Clin. Dermatol.* 28:160–163.
 30. Morgan J, et al. 2005. Incidence of invasive aspergillosis following hematopoietic stem cell and solid organ transplantation: interim results of a prospective multicenter surveillance program. *Med. Mycol.* 43(Suppl. 1): S49–S58.
 31. Ozer B, Kalaci A, Duran N, Dogramaci Y, Yanat AN. 2009. Cutaneous infection caused by *Aspergillus terreus*. *J. Med. Microbiol.* 58:968–970.
 32. Peeters D, Clercx C. 2007. Update on canine sinonasal aspergillosis. *Vet. Clin. North Am. Small Anim. Pract.* 37:901–916.
 33. Peterson SW, Varga J, Frisvad JC, Samson RA. 2008. Phylogeny and subgeneric taxonomy of *Aspergillus*, p 33–56. In Varga J, Samson RA (ed), *Aspergillus in the genomics era*. Wageningen Academic Publishers, Wageningen, The Netherlands.
 34. Petti AC, et al. 2008. Interpretive criteria for identification of bacteria and fungi by DNA target sequencing; approved guideline. CLSI document MM18-A. Clinical and Laboratory Standards Institute, Wayne, PA.
 35. Robinson WF, Connole MD, King TJ, Pitt JI, Moss SM. 2000. Systemic mycosis due to *Aspergillus deflexus* in a dog. *Aust. Vet. J.* 78:600–602.
 36. Sakai M, et al. 1992. Genotoxicity of fungi evaluated by SOS microplate assay. *Nat. Toxins* 1:27–34.
 37. Schultz RM, et al. 2008. Clinicopathologic and diagnostic imaging characteristics of systemic aspergillosis in 30 dogs. *J. Vet. Intern. Med.* 22: 851–859.
 38. Shah A. 2010. Concurrent allergic bronchopulmonary aspergillosis and aspergilloma: is it a more severe form of the disease? *Eur. Respir. Rev.* 19:261–263.
 39. Sharp NJH, Mathews KG. 2006. Canine nasal aspergillosis-penicilliosis, p 613–627. In Greene CE (ed), *Infectious diseases of the dog and cat*, 3rd ed. Elsevier Saunders, Edinburgh, United Kingdom.
 40. Southard C. 1987. Bronchopulmonary aspergillosis in a dog. *J. Am. Vet. Med. Assoc.* 190:875–877.
 41. Van Der Linden JW, Warris A, Verweij PE. 2011. *Aspergillus* species intrinsically resistant to antifungal agents. *Med. Mycol.* 49(Suppl. 1): S82–S89.
 42. Veraldi S, Chiaratti A, Harak H. 2010. Onychomycosis caused by *Aspergillus versicolor*. *Mycoses* 53:363–365.
 43. Whitbread TJ, Batt RM, Garthwaite G. 1984. Relative deficiency of serum IgA in the German shepherd dog: a breed abnormality. *Res. Vet. Sci.* 37:350–352.
 44. Whitley NT, et al. 2010. Long term survival in two German shepherd dogs with *Aspergillus*-associated cavitory pulmonary lesions. *J. Small Anim. Pract.* 51:561.
 45. Wood GL, Hirsh DC, Selcer RR, Rinaldi MG, Boorman GA. 1978. Disseminated aspergillosis in a dog. *J. Am. Vet. Med. Assoc.* 172:704–707.