

Comparative analysis of genome-wide association studies signals for lipids, diabetes, and coronary heart disease: Cardiovascular Biomarker Genetics Collaboration

Aspasia Angelakopoulou^{1†}, Tina Shah^{2*†}, Reecha Sofat², Sonia Shah³, Diane J. Berry⁴, Jackie Cooper⁵, Jutta Palmen⁵, Ioanna Tzoulaki^{6,7}, Andrew Wong⁸, Barbara J. Jefferis⁹, Nikolas Maniatis¹⁰, Fotios Drenos⁵, Bruna Gigante¹¹, Rebecca Hardy⁸, Ross C. Laxton¹², Karin Leander¹¹, Anna Motterle¹², Iain A. Simpson¹³, Liam Smeeth¹, Andy Thomson⁹, Claudio Verzilli¹, Diana Kuh⁸, Helen Ireland⁵, John Deanfield¹⁴, Mark Caulfield¹², Chris Wallace^{12,15}, Nilesh Samani^{16,17}, Patricia B. Munroe¹², Mark Lathrop¹⁸, F. Gerry R. Fowkes¹⁹, Michael Marmot²⁰, Peter H. Whincup²¹, John C. Whittaker^{1,22}, Ulf de Faire¹¹, Mika Kivimaki²⁰, Meena Kumari²⁰, Elina Hypponen⁴, Chris Power⁴, Steve E. Humphries⁵, Philippa J. Talmud⁵, Jackie Price¹⁹, Richard W. Morris⁹, Shu Ye¹², Juan P. Casas^{1,20}, and Aroon D. Hingorani^{2,20}

¹Faculty of Epidemiology and Population Health, London School of Hygiene and Tropical Medicine, Keppel Street, London WC1E 7HT, UK; ²Division of Medicine, Centre for Clinical Pharmacology, University College London, Rayne Institute, 5 University Street, London WC1E 6JF, UK; ³Department of Genetics, Evolution and Environment, UCL Genetics Institute, University College London, Darwin Building, Gower Street, London WC1E 6BT, UK; ⁴MRC Centre of Epidemiology for Child Health and Centre for Paediatric Epidemiology and Biostatistics, Institute of Child Health, University College London, 30 Guilford Street, London WC1N 1EH, UK; ⁵Centre for Cardiovascular Genetics, Institute of Cardiovascular Science, University College London, Rayne Institute, 5 University Street, London WC1E 6JF, UK; ⁶Department of Epidemiology and Biostatistics, Imperial College London, Norfolk Place, London W2 1PG, UK; ⁷Department of Hygiene and Epidemiology, University of Ioannina School of Medicine, Ioannina, Greece; ⁸MRC Unit for Lifelong Health and Ageing, 33 Bedford Place, London WC1B 5JU, UK; ⁹Department of Primary Care and Population Health, University College London Medical School, Rowland Hill Street, London NW3 2PF, UK; ¹⁰Division of Biosciences, Department of Genetics, Evolution and Environment, University College London, Gower Street, London WC1E 6BT, UK; ¹¹Division of Cardiovascular Epidemiology, Institute of Environmental Medicine, Karolinska Institutet, Stockholm, Sweden; ¹²William Harvey Research Institute, Barts and the London School of Medicine, Queen Mary University of London, John Vane Science Centre, Charterhouse Square, London EC1M 6BQ, UK; ¹³Wessex Regional Cardiac Unit, Southampton University Hospital, Tremona Road, Southampton SO16 6YD, UK; ¹⁴Institute of Child Health, University College London, 30 Guilford Street, London WC1N 1EH, UK; ¹⁵JDRF/WT Diabetes and Inflammation Laboratory, Cambridge Institute for Medical Research, Addenbrooke's Hospital, University of Cambridge, Wellcome Trust/MRC Building, Cambridge CB2 0XY, UK; ¹⁶Department of Cardiovascular Sciences, University of Leicester, Glenfield Hospital, Groby Road, Leicester LE3 9QP, UK; ¹⁷Leicester NIHR Biomedical Research Unit in Cardiovascular Disease, Glenfield Hospital, Leicester LE3 9QP, UK; ¹⁸Centre National de Genotypage, 2, Rue Gaston Cremieux, Evry, Paris 91057, France; ¹⁹Centre for Population Health Sciences, University of Edinburgh, Medical School, Teviot Place, Edinburgh EH8 9AG, UK; ²⁰Department of Epidemiology and Public Health, Division of Population Health, University College London, Torrington Place, London WC1E 7HB, UK; ²¹Division of Community Health Sciences, Cranmer Terrace, St George's, University of London, London SW17 0RE, UK; and ²²GlaxoSmithKline, Medicines Research Centre, Mailstop 1S101, Gunnels Wood Road, Stevenage, Hertfordshire, SG1 2NY

Received 22 December 2010; revised 18 April 2011; accepted 23 June 2011; online publish-ahead-of-print 30 July 2011

See page 290 for the editorial comment on this article (doi:10.1093/eurheartj/ehr256)

Aims

To evaluate the associations of emergent genome-wide-association study-derived coronary heart disease (CHD)-associated single nucleotide polymorphisms (SNPs) with established and emerging risk factors, and the association of genome-wide-association study-derived lipid-associated SNPs with other risk factors and CHD events.

[†] These authors contributed equally.

* Corresponding author. Tel: +44 02076796301, Fax: +44 02076796612, Email: t.shah@ucl.ac.uk

Published on behalf of the European Society of Cardiology. All rights reserved. © The Author 2011. For permissions please email: journals.permissions@oup.com.

The online version of this article has been published under an open access model. Users are entitled to use, reproduce, disseminate, or display the open access version of this article for non-commercial purposes provided that the original authorship is properly and fully attributed; the Journal, Learned Society and Oxford University Press are attributed as the original place of publication with correct citation details given; if an article is subsequently reproduced or disseminated not in its entirety but only in part or as a derivative work this must be clearly indicated. For commercial re-use, please contact journals.permissions@oup.com

Methods and results

Using two case–control studies, three cross-sectional, and seven prospective studies with up to 25 000 individuals and 5794 CHD events we evaluated associations of 34 genome-wide-association study-identified SNPs with CHD risk and 16 CHD-associated risk factors or biomarkers. The Ch9p21 SNPs rs1333049 (OR 1.17; 95% confidence limits 1.11–1.24) and rs10757274 (OR 1.17; 1.09–1.26), *MIA3* rs17465637 (OR 1.10; 1.04–1.15), Ch2q36 rs2943634 (OR 1.08; 1.03–1.14), *APC* rs383830 (OR 1.10; 1.02, 1.18), *MTHFD1L* rs6922269 (OR 1.10; 1.03, 1.16), *CXCL12* rs501120 (OR 1.12; 1.04, 1.20), and *SMAD3* rs17228212 (OR 1.11; 1.05, 1.17) were all associated with CHD risk, but not with the CHD biomarkers and risk factors measured. Among the 20 blood lipid-related SNPs, *LPL* rs17411031 was associated with a lower risk of CHD (OR 0.91; 0.84–0.97), an increase in Apolipoprotein AI and HDL-cholesterol, and reduced triglycerides. *SORT1* rs599839 was associated with CHD risk (OR 1.20; 1.15–1.26) as well as total- and LDL-cholesterol, and apolipoprotein B. *ANGPTL3* rs12042319 was associated with CHD risk (OR 1.11; 1.03, 1.19), total- and LDL-cholesterol, triglycerides, and interleukin-6.

Conclusion

Several SNPs predicting CHD events appear to involve pathways not currently indexed by the established or emerging risk factors; others involved changes in blood lipids including triglycerides or HDL-cholesterol as well as LDL-cholesterol. The overlapping association of SNPs with multiple risk factors and biomarkers supports the existence of shared points of regulation for these phenotypes.

Keywords

Coronary disease • Lipids • Genes • Risk factors

Introduction

Alterations in a number of intermediate phenotypes or biomarkers (such as blood lipid fractions, inflammation, or coagulation proteins) precede and are associated with a higher risk of coronary heart disease (CHD) events. With the exception of LDL-cholesterol (LDL-C) for which there is additional evidence from interventional trials, inability to exclude bias arising from confounding and reverse causation, precludes firm conclusions being drawn about their causal relevance using observational data alone.¹ Genome wide association studies (GWAS) are less affected by confounding or by reverse association bias because genotype is determined by randomized allocation and fixed from conception.^{2–4} However single nucleotide polymorphisms (SNPs) associated with common diseases including CHD have typically been in non-coding DNA, distant from annotated genes, or in chromosomal regions where associated SNPs span several different equally plausible candidates.^{5–7} This can make it difficult to infer the mechanisms linking genome variation to clinical endpoints simply from genomic location.

Integration of information on genotype, intermediate phenotypes, and disease endpoints could provide insight into the mechanism by which disease-associated SNPs alter cardiovascular risk and help better define the causal relevance of cardiovascular biomarkers. However, the emphasis of most GWAS, thus far, has rightly been on the robust detection of genetic signals with a single phenotype (or narrow range of phenotypes, e.g. blood lipids) or one disease endpoint at a time.⁸

The large number of CHD cases needed to conduct adequately powered genetic association studies is most efficiently assembled using a case–control design,⁷ but preclinical risk factors and disease biomarkers have been best characterized in population-based cohort studies, which individually accrue fewer cases.⁹ Because genotype is determined at conception, and invariant, it becomes possible to undertake large-scale genetic meta-analyses

that include information from both types of study to maximize available information on both biomarkers and disease endpoints.^{10,11}

Using a collaboration of 12 studies, involving ~25 000 individuals, we typed the first SNPs to be identified from GWAS (from 2007 to 2008) that were associated either with myocardial infarction (MI) or with an intermediate phenotype previously associated with MI risk including LDL-C, HDL-cholesterol (HDL-C), triglycerides (TG), body mass index (BMI), or type-2 diabetes mellitus (T2DM).^{5,12–19} We studied the associations of these SNPs with a wider range of intermediate phenotypes, to elucidate shared points of regulation, and with CHD risk to assess if the biomarkers altered are likely to mediate or mark changes in the causal pathway to CHD.

First, we hypothesized that comparative analysis of SNP associations with cardiovascular disease (CVD) risk factors/biomarkers and CVD endpoints would help delineate the mechanisms linking genetic variation to CVD events. Identifying which biomarker-associated SNPs also alter disease risk should help clarify which biomarkers lie in the causal pathway. Conversely, understanding which risk factors/biomarkers are altered by disease-associated SNPs should help elucidate the mechanisms underlying the disease association where these are uncertain. Second, we hypothesized that since non-genetic biomarkers are frequently correlated, SNPs identified for an index association with one CVD risk factor/biomarker would frequently be associated with a diverse array of other risk factors/biomarkers. Studying of the effect of a SNP on many phenotypes (a phenome scan) would define common points of regulation for diverse risk factors and help disentangle the causal from non-causal interconnections between correlated lipid and inflammation and coagulation markers. By helping to evaluate which SNP associations are exclusive to a single risk factor and which are more extensive, these analyses should also inform on the specificity of individual SNPs for Mendelian randomization analyses of biomarkers and risk factors.

Methods

Data sets

Prospective studies

Seven UK prospective studies contributed to the collaboration: Northwick Park Heart Study II (NPHS II),²⁰ British Regional Heart Study (BRHS),²¹ English Longitudinal Study of Ageing (ELSA),²² Edinburgh Artery Study (EAS),²³ the 1958 Birth Cohort (1958BC),²⁴ the MRC 1946 Birth Cohort (MRC 1946),²⁵ and the Whitehall II Study (WHII).²⁶ Six studies (NPHS II, BRHS, ELSA, EAS, 1958BC, and MRC 1946) were population based, while Whitehall II was workplace based. The details of the sampling frame, inclusion criteria, duration of follow-up, and other details are listed in Supplementary material online, Methods 1 and *Table S1*.

Cross-sectional studies

Two cross-sectional studies contributed prevalent cases of CHD: the Southampton Atherosclerosis Study (SAS)²⁷ and the Stockholm Heart Epidemiology Program (SHEEP).²⁸ The SHEEP study included contemporaneous controls, while the representative, population-based cohort study NPHS II, in which participant recruitment overlapped geographically with that for SAS, acted as a control data set for SAS. Details of design, matching criteria, recruitment, main demographic details, definition of outcomes, and other measures are described in Supplementary material online, Methods 1 and *Table S1*. Two cross-sectional studies included individuals without CHD but with a diagnosis of T2DM (based on individuals with a fasting glucose level ≥ 7.0 mmol/L or non-fasting glucose ≥ 11.1 mmol/L, or self-reported use of anti-diabetic medication): the UCL Diabetes and Cardiovascular Disease Study (UDACS)²⁹ and the Ealing Diabetes Study (EDS)³⁰ (Supplementary material online, Methods 1 and *Table S1*). One cross-sectional study, the MRC-BHF British Genetics of Hypertension (BRIGHT) study³¹ included individuals without CHD but with high blood pressure (BP) (*Table 1*).

Measures

Demographic and other variables

Age, gender, BMI, and systolic and diastolic BP were available from all studies (*Table 1*).

Blood biomarkers

The availability of blood lipids and apolipoproteins (ApoBs), indices of glycaemic control, as well as inflammation, coagulation, and metabolic markers are listed in *Table 1*. All measurements were made using validated assays and protocols whose details have been reported previously (Supplementary material online, Methods 1) and all markers were assayed in subjects free from CHD at the time of sampling. For prospective studies, these samples were obtained either from the baseline survey or from a subsequent resurvey closest to the assessment at which the study DNA repository was established.

Clinical outcomes

We defined coronary heart disease as a composite endpoint of non-fatal MI, CHD death, or coronary revascularization procedure using prevalent and incident events. We used a similar approach to that adopted by the CARDIoGRAM consortium for defining CHD endpoints.³² We defined incident events in cohort studies as occurring after establishment of the DNA repository and prevalent events as those non-fatal events preceding the establishment of a DNA repository. Subjects from the SAS study were sampled on the condition of

having coronary stenosis $\geq 50\%$ of the diameter in at least one major coronary artery (defined by coronary angiography rather than clinical CHD event).

Genotyping

We typed 21 SNPs associated with LDL-C, HDL-C, TG, or BMI and a total of 16 SNPs previously shown to exhibit an association with CHD or T2DM from GWAS reported in 2007 and 2008. All SNPs that were significant with a P -value $< 10^{-5}$ identified from GWAS were included for the analysis unless they were in linkage disequilibrium (LD). Where SNPs were in LD, the best proxy was chosen based on feasibility for genotyping to provide the maximum data available for the analysis. Two SNPs from the chromosome 9p21 region were selected as they had both been identified from GWAS. However, since rs10757274 had not been typed in HapMap at the time this analysis was initiated, and the degree of LD with other SNPs on ch9p21 was not known, both SNPs were included. Details are provided in *Table 2*. New genotyping was conducted using validated, high throughput genotyping platforms at the Genome Centre, Queen Mary University of London, using Kaspar technology or the ABI TaqMan platform; Medical Solutions, Nottingham, using the ABI SNPplex platform; or the Centre for Cardiovascular Genetics UCL, using the ABI TaqMan platform (*Table 1*). The Whitehall II study provided genotypes from the ITMAT/Broad Institute CARE consortium (IBC) Human CVD Beadchip (Illumina) while 1958BC and BRIGHT provided genotypes from the Affymetrix 500K whole genome array.

Analysis

We regarded a SNP association in CBGC with the same endpoint as that reported in the discovery GWAS as a replication analysis. Single nucleotide polymorphism associations in CBGC with outcomes distinct from the original discovery GWAS e.g. evaluation of associations of CHD-associated SNPs with risk factors and biomarkers were regarded as a discovery analysis.

Single nucleotide polymorphism associations with coronary heart disease

Seven studies including NPHS II, BRHS, ELSA, EAS, WHII, SAS, and SHEEP contributed to the meta-analysis of the association of genotype with CHD (*Table 1*). The meta-analysis utilized summary data from individual studies using a protocol agreed jointly by a central analysis subgroup in conjunction with principal investigators and statisticians from the participating studies. All analyses were restricted to individuals of Caucasian ethnicity and limited to subjects with complete data for gender, age, and genotype.

For the purposes of quality control and to allow evaluation of any genetic heterogeneity between studies, each study provided details of genotyping platform, call-rate, minor allele frequency (MAF), the exact P -value for a test of departure from Hardy–Weinberg equilibrium (HWE) in subjects without clinical evidence of CHD, and concordance rates for duplicate genotyping. We pre-specified a threshold call rate of 90%, but included SNPs with call rates $> 80\%$ provided the MAF was concordant with other studies, genotype error rates were $< 1\%$, and the P -value for deviation for HWE exceeded 0.001. The pre-specified analysis plan is included as Supplementary material online, Methods 2. Genotypes were coded using a standardized designation for homozygous and heterozygous individuals. Individuals homozygous for the common allele served as the reference group for all the comparisons.

Each contributing study estimated an unadjusted and adjusted OR (and standard error) for CHD, for each additional rare allele carried (i.e. a trend analysis using an additive model on the logarithmic

Table 1 Studies contributing to the Cardiovascular Biomarker Genetics Collaboration (see Appendix 1 for further details)

	NPHS-II	BRHS	ELSA	EAS	WH-II	1958BC	MRC 1946	SAS	SHEEP	UDACS	EDS	BRIGHT-cases	Total
Study design ^a	Prospective cohort	Prospective cohort	Prospective cohort	Prospective cohort	Prospective cohort	Prospective birth cohort	Prospective birth cohort	Cases with angiographic coronary disease	Cases of CHD and controls	Cross-sectional	Cross-sectional	Cases from case-control study of hypertension	
Sampling frame	General practices	General practices	Respondents of HSE	General practices	Workplace	Birth register	Birth register	CHD patients	Swedish citizens	Diabetic patients	Diabetic patients	General practices	
N with DNA	2775	3947	5274	940	5500	1480	2700	1164	2698	575	331	1759	
Genotyping method	TaqMan	SNPlex	SNPlex	TaqMan	IBC 50k CVD chip	Affy 500k	SNPlex	KASPAR	KASPAR	TaqMan	TaqMan	Affy 500k	
% men	100	100	48	50	77	50	50	76	69	59	60	40	
Years follow-up	17	26	10	20	20	51	63	NA	NA	—	—	10	
Mean (SD) age of participants	56.1 (3.4)	48.9 (5.50) from 1978 to 1980; 68.8 (5.49) from 1998 to 2000	64	64.3 (5.63)	60.9 (6.0)	45	53 at year of collection now 63	63.4	59.6 (7.15)	66.7 (11.0)	63.5 (13.8)	54.6 (10.1)	
Baseline year	1989–94	1978–80	1998, 1999, 2001	1987	1985–88	1958	1946	2000–01	1992–94	2001	2001–02	1996	
Cases of CHD	273 ^a	724 ^b	140 ^c	117 ^b	241 ^c	NA	NA	1164 ^c	1213 ^c	NA	NA	NA	3872
Cases of T2D	229 ^b	595 ^b	249 ^c	NA	336 ^c	NA	NA	NA	NA	600	331	NA	2340
BMI	2746	3863	5257	893	4789	1436	2455	NA	1052	554	301	1732	25 078
Systolic BP	2747	3860	5342	892	4803	1431	2439	NA	1055	556	320	1759	25 204
Diastolic BP	2747	3860	5341	890	4803	1431	2439	NA	1050	556	319	1759	25 195
Pulse P	2747	3860	5341	890	4803	1431	2439	NA	NA	556	319	1759	24 145
Total cholesterol	2742	3845	5406	892	4799	1416	2321	NA	1496	556	311	1502	25 286
LDL cholesterol	1735	3732	5264	887	4741	1338	2145	NA	1482	541	269	1502	23 636
HDL cholesterol	1836	3735	5404	887	4799	1413	2155	NA	1487	556	289	1503	24 064
Triglycerides	2742	2745	5406	892	4799	1415	2319	NA	1496	556	289	1502	24 161
ApoA1	2344	NA	NA	NA	4637	NA	NA	NA	1495	NA	NA	NA	8476
ApoB	2344	NA	NA	NA	4637	NA	NA	NA	1495	NA	NA	NA	8476
Homocysteine	1361	3776	NA	NA	NA	NA	NA	NA	1116	NA	NA	NA	6253
HbA1c	NA	3792	5405	NA	4759	1414	2333	NA	NA	553	303	NA	18 559
Glucose	NA	3843	3224	891	4791	NA	NA	NA	1363	556	315	NA	14 983
Insulin	NA	2717	NA	NA	4259	NA	NA	NA	1124	NA	NA	NA	8100
Fibrinogen	2733	3834	5436	874	4357	1416	NA	NA	1403	NA	NA	NA	20 053
IL-6	NA	2258	NA	628	4274	NA	NA	NA	801	546	NA	NA	8507
C-reactive protein	2279	3833	5404	605	4663	1418	NA	NA	1115	545	82	NA	19 944

^aIncident cases only.^bBoth prevalent and incident cases.^cPrevalent cases only; NA: not available.

Table 2 Categories of single nucleotide polymorphisms typed by the Cardiovascular Biomarkers Genetics Collaboration

SNP	Gene	Chr	Allele 1 ^a	Allele 2	Initial discovery study ^b
CHD SNPs					
rs599839	<i>SORT1</i>	1	A	G	Samani (2007)
rs17465637	<i>MIA3</i>	1	C	A	Samani (2007)
rs17672135	<i>FMN2</i>	1	T	C	WTCCC (2007)
rs2943634	intergenic	2	C	A	Samani (2007)
rs383830	<i>APC</i>	5	T	A	WTCCC (2007)
rs6922269	<i>MTHFD1L</i>	6	G	A	Samani (2007)
rs1333049	<i>CDKN2B</i> (d)	9	G	C	WTCCC (2007)
rs10757274	<i>CDKN2B</i> (d)	9	A	G	McPherson (2007)
rs501120	<i>CXCL12</i> (d)	10	C	T	Samani (2007)
rs1994016	<i>ADAMTS7</i>	15	C	T	WTCCC (2007)
rs17228212	<i>SMAD3</i>	15	T	C	Samani (2007)
rs8055236	<i>CDH13</i> (d)	16	T	G	WTCCC (2007)
rs7250581	<i>VSTM2B</i>	19	A	G	WTCCC (2007)
rs688034	<i>SEZ6L</i>	22	C	T	WTCCC (2007)
T2D SNPs					
rs10811661	<i>CDKN2B</i> (d)	9	C	T	Saxena (2007)
rs9939609	<i>FTO</i>	16	T	A	Frayling (2007)
HDL SNPs					
rs17411031	<i>LPL</i>	8	C	G	Wallace (2008)
rs3890182	<i>ABCA1</i>	9	G	A	Kathiresan (2008)
rs261332	<i>LIPC</i>	15	G	A	Wallace (2008)
rs9989419	<i>CETP</i>	16	G	A	Willer (2008)
rs16979595	<i>CLPTM1</i>	19	G	A	Wallace (2008)
LDL SNPs					
rs599839	<i>SORT1</i>	1	A	G	Willer (2008)
rs562338	<i>APOB</i>	2	A	G	Willer (2008)
rs688	<i>LDLR</i>	19	C	T	Wallace (2008)
rs4420638	<i>APOC1/APOE</i>	19	A	G	Willer (2008)
Triglyceride SNPs					
rs12042319	<i>ANGPTL3</i>	1	G	A	Wallace (2008)
rs3917820	<i>SELP</i>	1	G	A	Wallace (2008)
rs12140698	<i>FAM5B</i> (d)	1	C	T	Wallace (2008)
rs780094	<i>GCKR</i>	2	C	T	Willer (2008)
rs1471233	intergenic	4	C	T	Wallace (2008)
rs2074755	<i>BAZ1B</i>	7	T	C	Wallace (2008)
rs17482753	<i>LPL</i>	8	G	T	Wallace (2008)
rs4740635	intergenic	9	G	C	Wallace (2008)
rs7861175	<i>LPAR1</i> (d)	9	T	C	Wallace (2008)
rs6589566	<i>APOA5</i>	11	A	G	Wallace (2008)
rs7229921	<i>CIDEA</i> (d)	18	A	G	Wallace (2008)

(d) refers to the nearest downstream gene.

^aAllele 1 is the reference allele for all comparisons.^bInitial discovery studies are Samani (2007);¹² WTCCC (2007);⁵ McPherson (2007);¹³ Saxena (2007);¹⁹ Frayling (2007);¹⁸ Wallace (2008);¹⁵ Kathiresan (2008);¹⁶ Willer (2008).¹⁴

scale) as well as for subjects heterozygous or homozygous for the rare allele compared with those homozygous for the common allele. Variables used in the adjustment were age (in 5 year bands, e.g. 50–55, etc.), gender (male vs. female), and smoking (ever vs. never). A summary odds ratio (95% confidence interval) for the risk of CHD for each SNP was calculated by fixed effects meta-analysis

using the Mantel–Hanzel method as well as by random effects meta-analysis using the DerSimonian and Laird method. Where available, we included estimates from the Wellcome Trust Case Control Consortium 1 (WTCCC1) study of CHD⁵ in the meta-analysis. A false discovery rate (FDR)-adjusted *P*-value was calculated based on the number of hypotheses tested.³³ Defining FDR as the proportion

of falsely rejected hypotheses, i.e. for which the null was actually true, this new P -value, known as the q -value,³⁴ is the minimum FDR when rejecting a null hypothesis from a list of tested null hypothesis, conditioned on at least one positive finding having occurred.

Single nucleotide polymorphism associations with continuous risk factors and biomarkers

Eleven studies including NPHS II, BRHS, ELSA, EAS, WHII, 1958BC, MRC 1946, SHEEP, UDACS, EDS, and BRIGHT contributed to the analysis of SNP associations with continuous risk factors and biomarkers. The distributions of TG, homocysteine, C-reactive protein, and interleukin-6 (IL-6) were skewed in all studies and these variables were log transformed and analysed on the log-scale. For each SNP, we performed a linear regression analysis within study for each continuous biomarker assuming an additive effect of each variant allele. The per-allele regression coefficient, which is equal to the weighted per-allele mean difference, was then divided by the pooled standard deviation of the trait of interest, derived using information from each of the three genotypes categories; to calculate the standardized mean difference (and its corresponding standard error). Further details are provided in Supplementary material online, Methods 2 with information on the STATA do-files. Separate analyses were conducted unadjusted and adjusted for all of age (in 5 year bands, e.g. 50–55, etc.), gender (male vs. female), and smoking (ever vs. never). We used random and fixed effect meta-analysis to pool the within-study estimates for each trait to generate a summary per-allele standardized mean difference (and 95% confidence interval) to allow comparison of SNP effects across different traits on a common scale. For all traits, the mean of the standardized mean differences is 0 and the standard deviation 1. In the absence of consensus regarding statistical significance level for reporting SNP-associations with multiple traits or disease end-points (pleiotropy), we reported all results as point estimates and 95% confidence limits (although P -values are available in the Supplemental material online). An FDR-adjusted P -value (q -value) was also calculated based on the number of hypotheses tested.³³ Supplementary material online, Methods 3 provides a detailed discussion of sample size and study power in the context of the range of confirmatory and exploratory analyses that we conducted.

Results

Study populations and measures

The age range of the study populations was 44–67 years. Two studies were of men only (NPHS II and BRHS) while in the remainder, the proportion of men was between 48 and 72% of participants. Among the prospective studies with incident events, the length of follow-up was between 10 and 26 years. The two case–control studies (SHEEP and SAS) (2377 cases), and five of the seven prospective studies (1495 cases) contributed to the analysis of CHD outcomes (Table 1). The control subjects from SHEEP, participants with BP but no CHD from BRIGHT, and the participants from all cross-sectional and cohort studies contributed to the analyses of SNP effects on risk factors and biomarkers (Table 1). Information was available on BMI from 25 078 participants, and systolic and diastolic BP from 25 204 and 25 195 participants, respectively. The blood biomarkers measured spanned lipids and lipoproteins, indices of glycaemic control, inflammation, and coagulation including: total cholesterol (TC; n

= 25 286), HDL-C (n = 24 064), LDL-C (n = 23 636), fasting, or non-fasting TGs (n = 24,161), ApoA1 (n = 8476), ApoB (n = 8476), C-reactive protein (n = 19 944), IL-6 (n = 8507), fibrinogen (n = 20 053), fasting glucose (n = 14 983), fasting insulin (n = 8100), glycated haemoglobin (HbA1c; n = 18,559), and homocysteine (n = 6253).

Single nucleotide polymorphisms previously identified for an association with coronary heart disease

There was a strong concordance of MAFs across studies; see Supplementary material online, Tables S1–S3 for call rates, MAF and tests for departure from HWE. Of the 14 SNPs selected through an association with CHD, the following nine SNPs were associated with CHD events in a fixed effects meta-analysis: two at chromosome 9p21 (rs1333049, OR 1.17; 1.11–1.24 and rs10757274, OR 1.17; 1.09–1.26), and one each near *SORT1* rs599839 (OR 1.20; 1.15–1.26), *MIA3* rs17465637 (OR 1.10; 1.04–1.15), Ch2q36 rs2943634 (OR 1.08; 1.03–1.14), *APC* rs383830 (OR 1.10; 1.02–1.18), *MTHFD1L* rs6922269 (OR 1.10; 1.03–1.16), *CXCL12* rs501120 (OR 1.12; 1.04–1.20), and *SMAD3* rs17228212 (OR: 1.11; 1.05–1.17) (Figure 1 and Supplementary material online, Table S4). Supplementary material online, Figure S1 provides estimates from a random effects model. However, aside from rs599839, none of these CHD SNPs was associated with any of the wide range of risk factors and biomarkers analysed, despite available information from 20 000 or more participants for TC, LDL-C, HDL-C, TG, BMI, BP, fibrinogen, and C-reactive protein, over 15 000 for HbA1c, 10 000 for fasting glucose, and just under 10 000 for IL-6 and fasting insulin (Figures 2 and 3).

Single nucleotide polymorphisms previously identified for an association with blood lipids

Seventeen of 20 SNPs selected because of an initial association with a blood lipid component were associated with the same lipid fraction in the CBGC studies (Figure 3 and Supplementary material online, Table S4). The overlap with SNPs identified by the recent Global Lipids Genetics Consortium (GLGC) meta-analysis³⁵ is shown in Supplementary material online, Table S7. However, in all cases the effect of this category of SNPs was found to extend beyond the initial reported lipid fraction. For example, *ANGPTL3* rs12042319 was associated with BMI, TC, LDL-C, and IL-6 in addition to the reported association with TG (Supplementary material online, Figure S2). Another SNP, *LIPC* rs261332 whose initial reported association was with HDL-C, also showed additional associations with ApoAI, TC, fasting insulin, and TG (Supplementary material online, Figure S3).

A summary profile of associations for all the SNPs analysed with all the biomarkers measured is shown in Figure 3. The range and direction of associations was distinctive for each SNP. For example, of the five SNPs associated with HDL-C (*CLPTM1* rs16979595, *LPL* rs17411031, *LIPC* rs261332, *ABCA1* rs3890182, and *CETP* rs9989419), all had a different pattern of association with other risk factors and biomarkers. For some SNPs, the

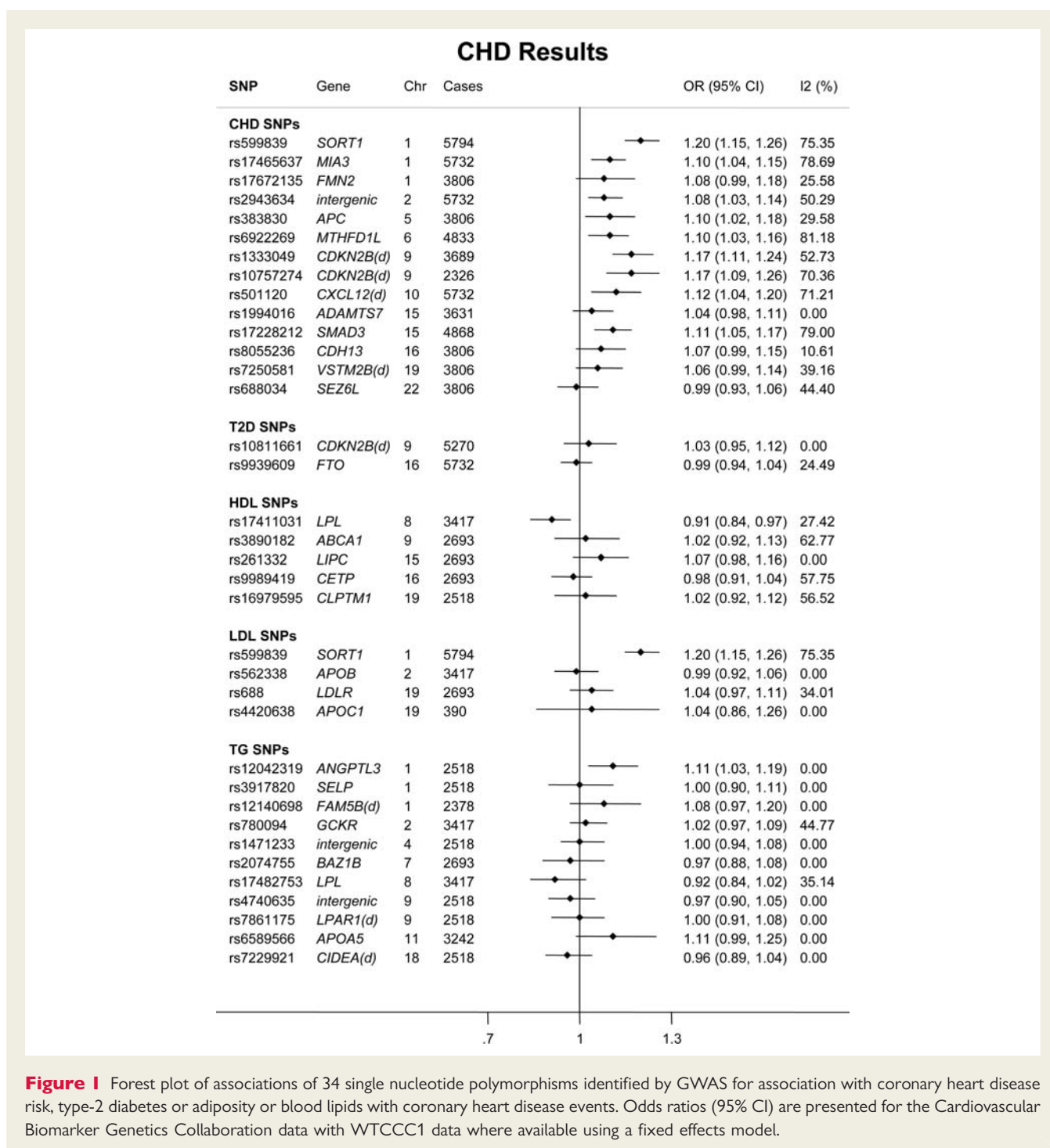


Figure 1 Forest plot of associations of 34 single nucleotide polymorphisms identified by GWAS for association with coronary heart disease risk, type-2 diabetes or adiposity or blood lipids with coronary heart disease events. Odds ratios (95% CI) are presented for the Cardiovascular Biomarker Genetics Collaboration data with WTCCC1 data where available using a fixed effects model.

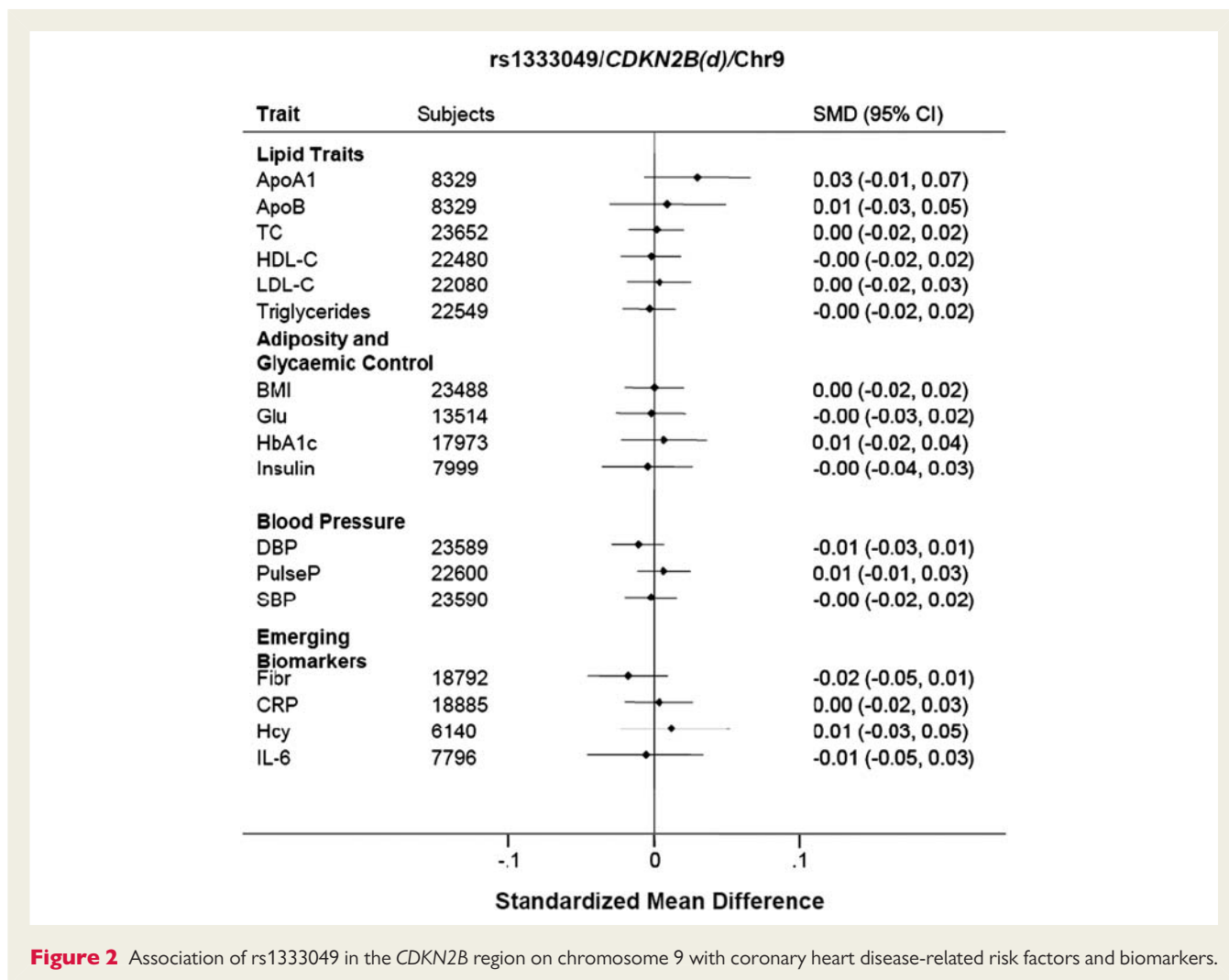
associations extended across a wider range of CHD biomarkers e.g. for *GCKR* rs780094, associations encompassed lipids and ApoB (TC and TG) as well as the inflammation markers C-reactive protein and fibrinogen (Supplementary material online, *Figure S4*).

Of the SNPs in this category, only three were associated with CHD (*Figure 1*); *LPL* rs17411031 whose initial association was with HDL-C (OR 0.91; 0.84–0.97) (*Figure 4*), *SORT1* rs599839 whose initial association was with LDL-C (OR 1.20; 1.15–1.26), and *ANGPTL3* rs12042319 whose initial association was

with TG (OR 1.11; 1.03–1.19) (Supplementary material online, *Figure S2*).

Single nucleotide polymorphisms previously identified for an association with type-2 diabetes or adiposity

Neither of the two SNPs typed whose initial association was with T2DM (Ch9p21 rs10811661 and *FTO* rs9939609) or adiposity (*FTO*



rs9939609) was associated with CHD in the current analysis. However, we observed associations of the *FTO* SNP with variables incorporated in one or more definitions of the metabolic syndrome including systolic BP, TG and HDL-C (but not LDL-C), and C-reactive protein, in addition to fasting insulin and glucose, HbA1c, and BMI (Figures 3 and 5).

Discussion

Genome wide association studies have had resounding success in identifying genetic variants contributing to individual differences in the levels of established and emerging risk factors and CHD events.^{5,6,11,19,35,36} Genome wide association studies thus far have typically been designed to assess associations of many hundreds of thousands of SNPs usually with a single risk factor or disease endpoint at a time. However, many cardiovascular risk factors and biomarkers are correlated, and scores of alleles are thought to contribute to any common disease or traits,³⁷ so it has been hypothesized that overlapping genetic associations with multiple phenotypes are likely to be frequent. For example, SNPs in the *SH2B3* gene has been associated with

celiac disease, rheumatoid arthritis, eosinophil count, high BP, and MI.^{5,6,38–40}

In the current analysis, we systematically tested the extent to which SNPs identified through an initial association with a lipid fraction, diabetes, or CHD risk are related to a wider range of intermediate phenotypes. The aim was to identify common points of regulation among correlated risk factors and biomarkers and to evaluate which intermediate phenotypes are likely to lie in or mark changes in the causal pathways involved in CHD.

Single nucleotide polymorphisms initially identified for an association with coronary heart disease events

The well-studied Ch9p21 SNPs (rs1333049 and rs10757274) were significantly associated with the endpoint of CHD events, defined as prevalent MI (in SHEEP), incident/prevalent CHD events (in the prospective observational studies) or angiographic CAD (in SAS). However, neither of these SNPs nor the lead SNPs in *SMAD3*, *MIA3*, *CXCL12*, *MTHFD1L*, or Ch2q36 were associated with T2DM or any of the CHD biomarkers studied including BMI, BP, blood lipids, and ApoBs, the inflammation markers IL-6, fibrinogen,

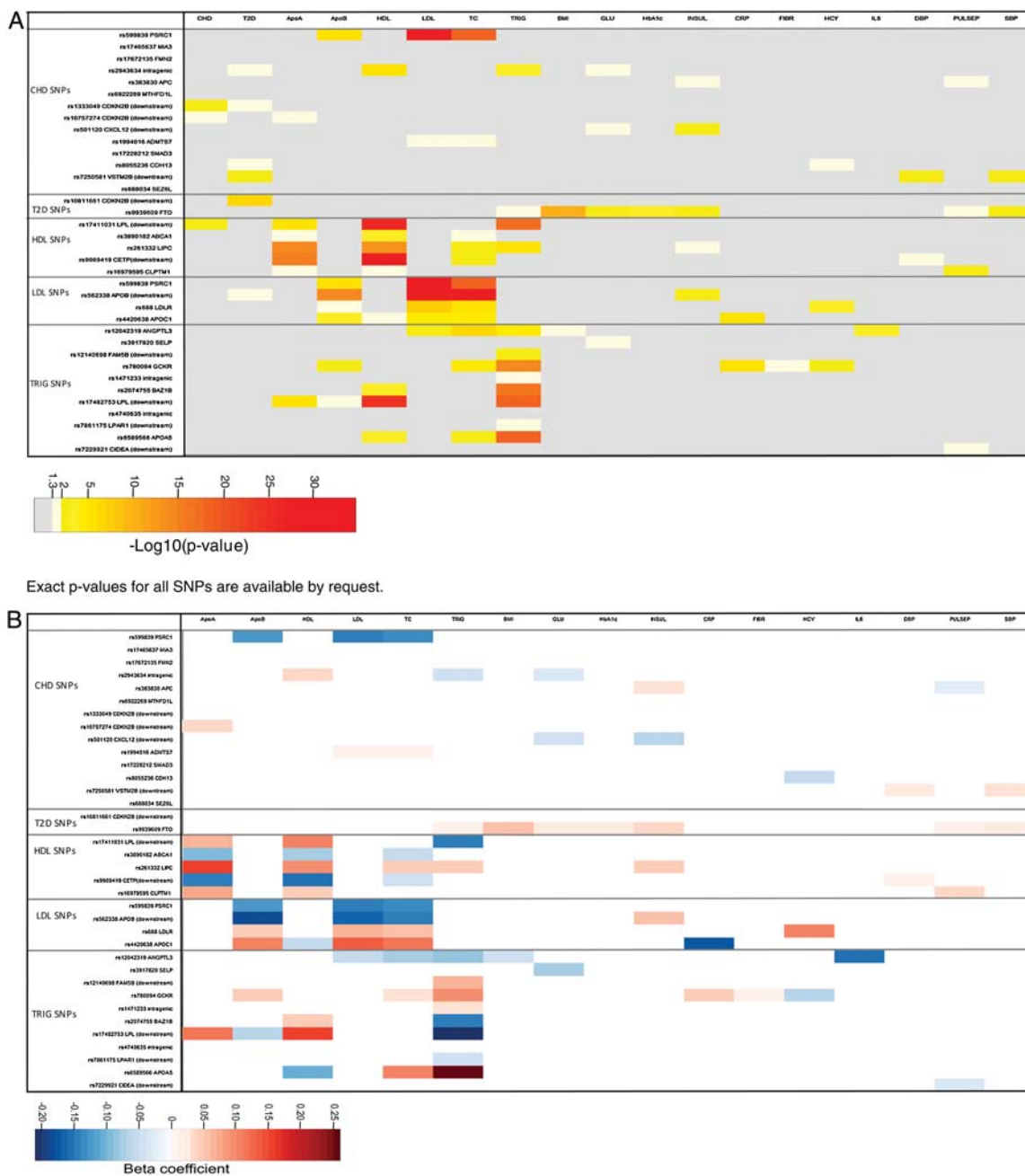


Figure 3 (A) Matrix of associations between the 34 single nucleotide polymorphisms analysed, continuous risk factors and biomarkers, and coronary heart disease events. Each cell is colour coded according to the P -value for the relevant association. (B) Matrix of associations between the 34 single nucleotide polymorphisms analysed, continuous risk factors and biomarkers, and coronary heart disease events. Each cell is colour coded according to the beta-coefficient from the pooled regression analysis (i.e. effect size) for the relevant association.

and C-reactive protein, or a number of markers of glycaemic status including fasting glucose and insulin as well as HbA1c. Given that the combined data set included over 20 000 observations for BMI, BP, TC, HDL-C and LDL-C, TG, C-reactive protein, and fibrinogen and over 10 000 for fasting glucose and HbA1c and the fact that these traits are continuous rather than dichotomous measures, the effect estimates we obtained are likely to be precise and based on adequately powered analysis. The FDR for

many of the identified trait associations have a q -value $< 10^{-5}$, suggesting that the majority of these are likely to be true. However, we could not exclude very minor effects on these or other traits. Prior studies of these CHD-associated SNPs (including the initial GWAS) have reported a lack of association with blood lipids and BP or with clinically defined hypertension or hyperlipidaemia, but the breadth and detail of intermediate phenotypes studied previously has not been as great as in the current

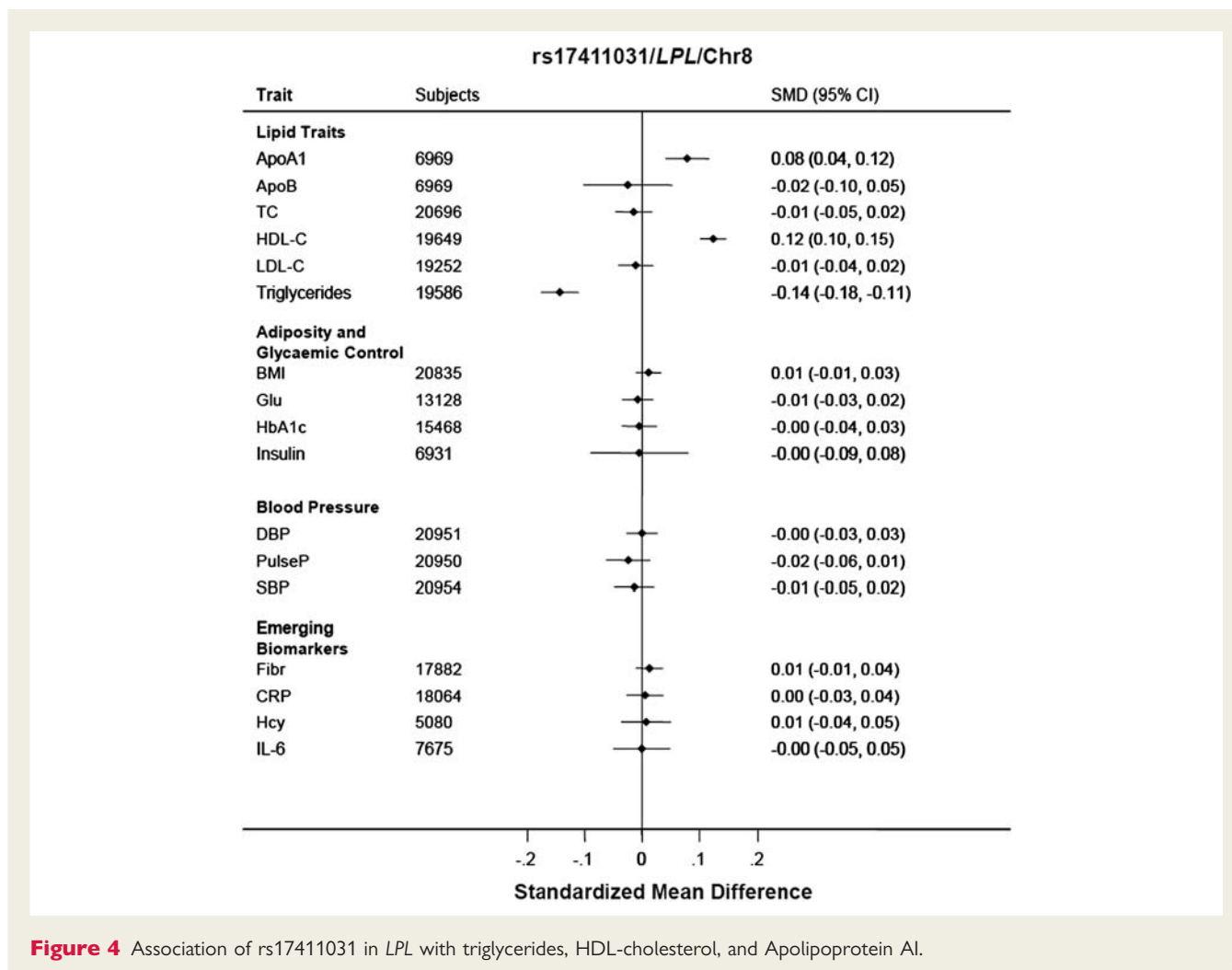


Figure 4 Association of rs17411031 in *LPL* with triglycerides, HDL-cholesterol, and Apolipoprotein AI.

study.^{5,12,13,41,42} The association of these SNPs with clinical events despite the absence of association with a wide range of established and emerging cardiovascular risk factors suggests their effects are mediated through a previously unsuspected disease mechanism. Additional fine mapping analyses will be required to demarcate the likely causal variants and functional studies to help identify the disease mechanisms.

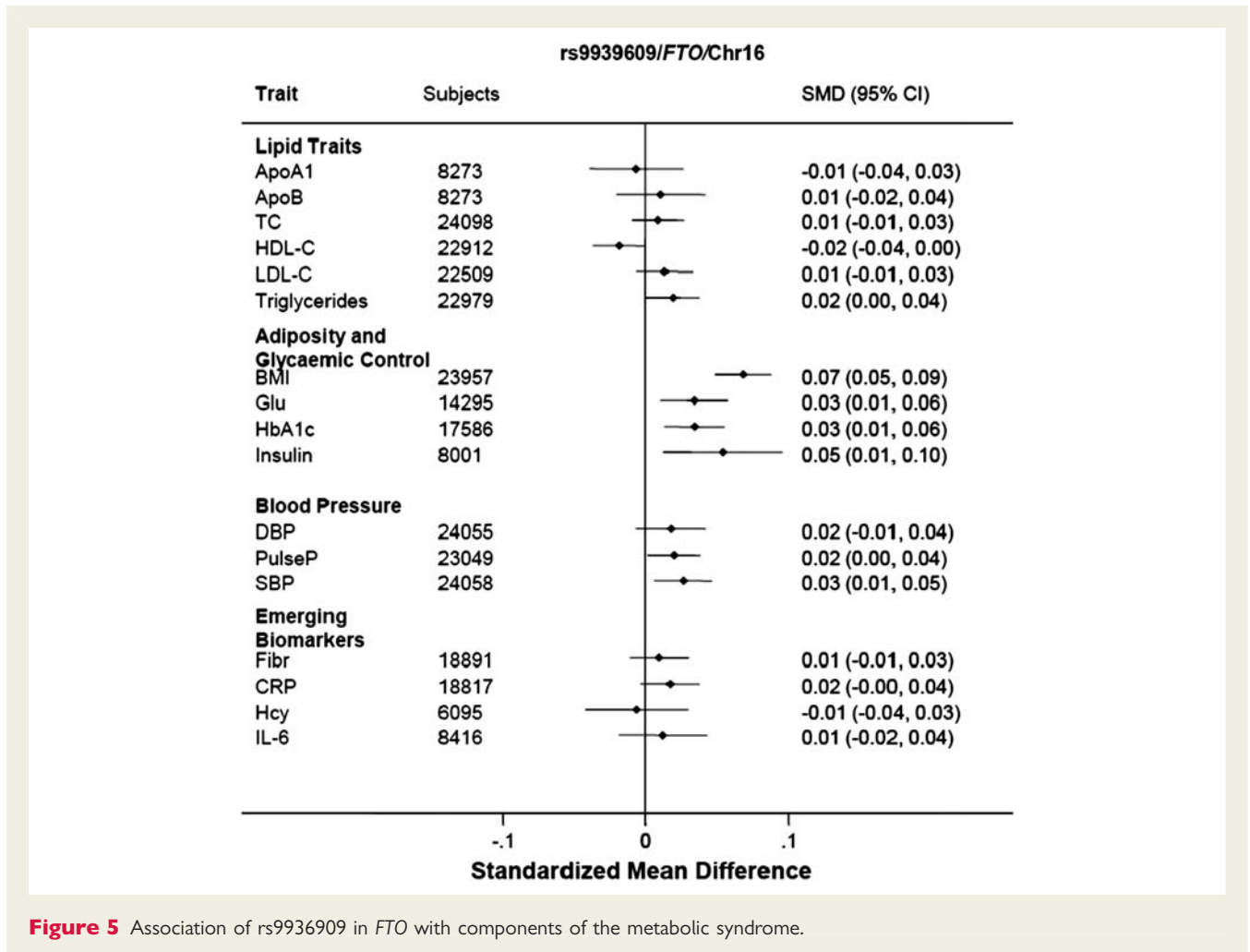
Lead SNPs in genomic regions including *SEZ6L*, *VSTM2B*, *CDH13*, *ADAMTS7*, and *FMN2* that were associated with CHD in initial GWAS,^{5,12} were not associated with CHD events in the current data set, broadly consistent with a recent analysis from the Coronary Artery Disease Consortium which included ~11 000 cases of CHD or MI.⁴¹

Single nucleotide polymorphisms initially identified for an association with lipids

With the exception of three SNPs identified previously to be associated with TG (*SELP* rs3917820, Ch9p24 rs4740635, *CIDEA* rs7229921), we replicated associations of 17 other SNPs with LDL-C, HDL-C, or TG. Each of these 17 variants had additional effects on other lipids or ApoBs, at least equal in

size to the index association, and some also had effects on other phenotypes such as inflammation markers or glycaemic indices.

Although many of these phenotypes are inter-correlated, the profile of associations was distinctive for each SNP (Figure 3), arguing that SNPs associated with several phenotypes have a true biological basis. For example, of the five SNPs associated in the same direction with HDL-C, only two were associated with TG; however, the direction of the effect was different. A similar situation was observed for SNPs originally associated with TG. These marked differences in the patterns of SNP associations contrast with the observed almost invariable association between HDL-C and TG levels.⁴³ Genetic studies in populations have been likened to natural randomized trials and we have previously reported on concordant effects on blood lipids and lipoproteins of *CETP* SNPs and treatment with a *CETP*-inhibitor.⁴⁴ Genome wide association studies have also reported associations of SNPs in the *HMGCR* gene (which encodes the target for statins) with LDL-C and CHD risk.^{16,17} Single nucleotide polymorphisms in the gene *PPARG* that encodes the target for glitazone drugs have also been shown to influence the risk of T2DM.^{19,45} This suggests that the SNPs



associated with blood lipids and other biomarkers could help to profile the likely effects of pharmacological modification of the same targets. The diverse effect profiles of SNPs associated with HDL-C indicate that not all therapeutic approaches for HDL-C elevation with the aim of coronary prevention are likely to be equally effective and that the choice of target may matter as much as the elevation of HDL-C *per se*.

The *ANGPTL3* SNP rs12042319 was associated with increased CHD risk but with lower LDL-C, TG, and IL-6 levels, all of which have themselves been associated with increased risk of CHD.^{46–48} Although *ANGPTL3* has been associated with TG and LDL-C levels,³⁵ it has not been previously associated with CHD risk in GWAS analysis or in the recent pooled analysis.⁴⁹ Therefore, the CHD association we observed should be considered hypothesis generating, and any relevant mechanism is deserving of further investigation. The *LPL* SNP rs17411031 was associated with a lower risk of CHD and with lower TG and higher HDL-C values. Other SNPs in this gene have previously been shown to affect TG, HDL-C, and CHD risk,^{14–17,19,50} and a recent analysis of a common variant in the *APOA5* gene that is functionally linked with *LPL*, is also associated with TG, HDL-C, and CHD risk.^{51,52,47} These findings suggest further studies of the ApoAV/

LPL pathway should be performed to evaluate it as a possible therapeutic target for coronary prevention.

Single nucleotide polymorphisms initially identified for an association with body mass index or diabetes

We studied two SNPs identified with an index association with T2DM, one of which (*FTO* rs9939609) is thought to act through a primary effect on adiposity and BMI. Neither of these SNPs was associated with CHD in this study, however, the *FTO* SNP was associated with higher BMI, systolic BP, fasting insulin and glucose, HbA1c, TG, and C-reactive protein, as well as a lower HDL-C. The International Diabetes Federation (http://www.idf.org/metabolic_syndrome) defines metabolic syndrome as the presence of central obesity (indexed by waist circumference) together with the presence of two of the following: raised BP, raised TGs, raised fasting glucose, and reduced HDL-C. Our findings are also in keeping with those reported previously from a meta-analysis of ~17 000 participants.⁵³ Taken together, the findings suggest that targeting *FTO* itself or *FTO*-mediated effects may be effective

in reducing the risk of metabolic syndrome and, perhaps, its downstream consequences on disease risk as recently suggested.⁵⁴

Limitations

Our analysis was limited to SNPs identified by the first wave of GWAS, and although the list of variants influencing CHD, blood lipids, diabetes, and BMI has since increased substantially, the first SNPs to be identified are likely to represent the largest effect sizes. Our analysis represents one of the first attempts to study the effect of SNPs from GWAS relevant to cardiovascular disease on a wide range of cardiovascular phenotypes as well as CHD. The study is well powered to achieve this, and for example, a sample size of ~7000 subjects would be required to be able to discover SNPs that explain as little as 0.5% of the variance with 80% power, and for the majority of traits we far exceed this number. The approach we have taken could now be extended to incorporate both a wider range of SNPs from subsequent GWAS as well as a wider range of phenotypes, to build a more comprehensive picture of the repertoire of SNPs affecting each of the cardiovascular risk factors and biomarkers as well as the repertoire of traits affected by any given SNP, and to integrate this information with the risk of clinical disease endpoints.

The GLGC analysis was a recent hugely important and successful effort to discover and replicate additional loci for four lipid traits: total-, LDL-, and HDL-C, as well as TGs. For the SNPs that were present in both our study and the GLGC, the directions of effect were concordant as shown in Supplementary material online, *Tables S5–S7*. However, the GLGC did not have the opportunity to study the wide range of inflammation, coagulation, and glycaemic markers that we have been able to report on in the present work. Although the GLGC analysis investigated the association of lipid-associated loci with CHD risk in 24 607 CAD cases compared with 5794 cases in the current analysis (see Supplementary material online, *Table S7*), many of the SNPs we studied were already identified for their association with CHD risk. Nevertheless, our findings should be interpreted within the context of the available power of the study and the potential for false positive association. There may also have been heterogeneity of effect estimates among the different sample collections evidenced by the high I^2 values for many of the pooled analyses, and the reasons for this potential heterogeneity are worthy of further investigation, though some could be attributed to the differences in study design. Ongoing collaborative GWAS in CHD should help to clarify the role of these loci and also unveil additional smaller effect loci underlying susceptibility to CHD.

Conclusions

The unique properties of genotype, which are distinct from other natural differences between individuals, provide new opportunities for evaluating causal links between associated intermediate phenotypes and between phenotypes and disease. Our findings demonstrate that there are likely to be important unsuspected disease mechanisms and therapeutic targets for CHD; and that there may be points of regulation for diverse cardiovascular risk factors and biomarkers. In future, enhancing the level of detail at both genetic and phenotypic level, incorporating transcriptomics,

metabolomics, as well as structural imaging should provide a more comprehensive understanding of the mechanisms linking genome variation with disease. In turn, this should help the development of additional effective therapies for cardiovascular disease prevention.

Supplementary material

Supplementary material is available at *European Heart Journal* online.

Funding

NPHS II was supported by the British Medical Research Council, the US National Institute of Health (grant NHLBI 33014) and Du Pont Pharma, Wilmington, USA. The *British Regional Heart Study* is a British Heart Foundation Research Group and is supported by British Heart Foundation (RG/04/003). The views expressed in this publication are those of the authors and not necessarily those of the funding bodies. Samples from the English Longitudinal Study of Ageing (*ELSA*) DNA Repository (EDNAR), received support under a grant (AG1764406S1) awarded by the National Institute on Ageing (NIA). *ELSA* was developed by a team of researchers based at the National Centre for Social Research, University College London and the Institute of Fiscal Studies. The data were collected by the National Centre for Social Research. The developers and funders of *ELSA* and the Archive do not bear any responsibility for the analyses or interpretations presented here. The Edinburgh Artery Study (*EAS*) was funded by the British Heart Foundation. The *Whitehall II* study has been supported by grants from the Medical Research Council; Economic and Social Research Council; British Heart Foundation; Health and Safety Executive; Department of Health; National Heart Lung and Blood Institute (HL36310), US, NIH: National Institute on Aging (AG13196), US, NIH; Agency for Health Care Policy Research (HS06516); and the John D and Catherine T MacArthur Foundation Research Networks on Successful Midlife Development and Socio-economic Status and Health. Analyses of the *1958 birth cohort* data were funded by the Medical Research Council (G0601653) and undertaken at GOSH/UCL Institute of Child Health, which received a proportion of funding from the Department of Health's NIHR Biomedical Research Centres funding scheme. DNA collection was funded by MRC grant G0000934 and genotyping was funded by Wellcome Trust grant 068545/Z/02. The *1946 British birth cohort* is funded by the UK Medical Research Council. The Southampton Atherosclerosis Study (*SAS*) was funded by the British Heart Foundation PG/98183. This work was facilitated by the Barts and The London National Institute for Health Research Cardiovascular Biomedical Research Unit. The Stockholm Heart Epidemiology Program Study (*SHEEP*) was supported by grants from the Research Council of Sweden (09533), the Swedish Heart and Lung Foundation and Stockholm County Council (ALF). The *BRIGHT study* is supported by the Medical Research Council (G9521010D) and the British Heart Foundation (PG/02/128). The Barts and The London Charity funded the Barts and The London Genome Centre. This work forms part of the research themes contributing to the translational research portfolio of Barts and the London Cardiovascular Biomedical Research Unit which is supported and funded by the National Institute of Health Research. The *BRIGHT study* is also extremely grateful to all the patients who participated in the study and the *BRIGHT* nursing team. The *Wellcome Trust Case Control Consortium* was funded by the Wellcome Trust (grant number: 076113/B/04/Z). A.D.H. holds a British Heart Foundation Senior Fellowship (FS 05/125). L.S. holds a Wellcome Trust Senior Research Fellowship. R.S. is supported by a British Heart Foundation (Schillingford)

Clinical Training Fellowship (FS/07/011). S.E.H. holds a British Heart Foundation Chair in Cardiovascular Genetics, he, P.J.T., J.C. and J.P. are supported by British Heart Foundation RG08/014. E.H. is funded by a Department of Health (UK) Public Health Career Scientist Award. S.Y. is supported by the British Heart Foundation FS/07/021. D.K., R.H. and A.W. are funded by the MRC. C.W. was supported by a British Heart Foundation Intermediate Fellowship (FS/05/061/19501). J.D. holds a British Heart Foundation Chair in Cardiology. M.K. and M.K. are supported by the National Heart, Lung, and Blood Institute, NIH, USA (R01HL036310). M.C. and P.B.M. are funded by the Barts and The London National Institute for Health Research Cardiovascular Biomedical Research Unit and the MRC Programme grant G9521010. Funding to pay the Open Access publication charges for this article will be provided by the British Heart Foundation.

Conflict of interest: A.D.H. is on the editorial board of *Drug and Therapeutics Bulletin*, a BMJ Group Publication; has provided non-remunerated advice to GlaxoSmithKline, and London Genetics; and has received honoraria for speaking at educational meetings relating to risk factor management and primary prevention. J.W. is 90% employed at GlaxoSmithKline while retaining a 10% appointment at London School of Hygiene and Tropical Medicine.

References

- Brotman DJ, Walker E, Lauer MS, O'Brien RG. In search of fewer independent risk factors. *Arch Intern Med* 2005;**165**:138–145.
- Katan M. Apolipoprotein E isoforms, serum cholesterol, and cancer. *Lancet* 1986;**1**:507–508.
- Davey Smith G, Ebrahim S. 'Mendelian randomization': can genetic epidemiology contribute to understanding environmental determinants of disease?. *Int J Epidemiol* 2003;**32**:1–22.
- Hingorani A, Humphries S. Nature's randomised trials. *Lancet* 2005;**366**:1906–1908.
- The Wellcome Trust Case Control Consortium. Genome-wide association study of 14,000 cases of seven common diseases and 3,000 shared controls. *Nature* 2007;**447**:661–678.
- Levy D, Ehret GB, Rice K, Verwoert GC, Launer LJ, Dehghan A, Glazer NL, Morrison AC, Johnson AD, Aspelund T, Aulchenko Y, Lumley T, Kotting A, Vasan RS, Rivadeneira F, Eiriksdottir G, Guo X, Arking DE, Mitchell GF, Mattace-Raso FUS, Smith AV, Taylor K, Scharpf RB, Hwang SJ, Sijbrands EJG, Bis J, Harris TB, Ganesh SK, O'Donnell CJ, Hofman A, Rotter JJ, Coresh J, Benjamin EJ, Uitterlinden AG, Heiss G, Fox CS, Witteman JCM, Boerwinkle E, Wang TJ, Gudnason V, Larson MG, Chakravarti A, Psaty BM, van Duijn CM. Genome-wide association study of blood pressure and hypertension. *Nat Genet* 2009;**41**:677–687.
- Hardy J, Singleton A. Genomewide association studies and human disease. *N Engl J Med* 2009;**360**:1759–1768.
- Hindorf LA, Sethupathy P, Junkins HA, Ramos EM, Mehta JP, Collins FS, Manolio TA. Potential etiologic and functional implications of genome-wide association loci for human diseases and traits. *PNAS* 2009;**106**:9362–9367.
- Manolio TA. Cohort studies and the genetics of complex disease. *Nat Genet* 2009;**41**:5–6.
- Heid IM, Boes E, Muller M, Kollerits B, Lamina C, Coassin S, Gieger C, Doring A, Klopp N, Frikke-Schmidt R, Tybjaerg-Hansen A, Brandstatter A, Luchner A, Meitinger T, Wichmann HE, Kronenberg F. Genome-wide association analysis of high-density lipoprotein cholesterol in the population-based KORA study sheds new light on intergenic regions. *Circ Cardiovasc Genet* 2008;**1**:10–20.
- Kathiresan S, Willer CJ, Peloso GM, Demissie S, Musunuru K, Schadt EE, Kaplan L, Bennett D, Li Y, Tanaka T, Voight BF, Bonnycastle LL, Jackson AU, Crawford G, Surti A, Guiducci C, Burt NP, Parish S, Clarke R, Zelenika D, Kubalanza KA, Morken MA, Scott LJ, Stringham HM, Galan P, Swift AJ, Kuusisto J, Bergman RN, Sundvall J, Laakso M, Ferrucci L, Scheet P, Sanna S, Uda M, Yang Q, Lunetta KL, Dupuis J, de Bakker PIW, O'Donnell CJ, Chambers JC, Koener JS, Hercberg S, Meneton P, Lakatta EG, Scuteri A, Schlessinger D, Tuomilehto J, Collins FS, Groop L, Altshuler D, Collins R, Lathrop GM, Melander O, Salomaa V, Peltonen L, Orho-Melander M, Ordovas JM, Boehnke M, Abecasis GR, Mohlke KL, Cupples LA. Common variants at 30 loci contribute to polygenic dyslipidemia. *Nat Genet* 2009;**41**:56–65.
- Samani NJ, Erdmann J, Hall AS, Hengstenberg C, Mangino M, Mayer B, Dixon RJ, Meitinger T, Braund P, Wichmann HE, Barrett JH, Konig IR, Stevens SE, Szymczak S, Tregouet DA, Iles MM, Pahlke F, Pollard H, Lieb W, Cambien F, Fischer M, Ouwehand W, Blankenberg S, Balmforth AJ, Baessler A, Ball SG, Strom TM, Braenne I, Gieger C, Deloukas P, Tobin MD, Ziegler A, Thompson JR, Schunkert H, the WTCCC and the Cardiogenics Consortium. Genome-wide association analysis of coronary artery disease. *N Engl J Med* 2007;**357**:443–453.
- McPherson R, Pertsemidis A, Kavaslar N, Stewart A, Roberts R, Cox DR, Hinds DA, Pennacchio LA, Tybjaerg-Hansen A, Folsom AR, Boerwinkle E, Hobbs HH, Cohen JC. A common allele on chromosome 9 associated with coronary heart disease. *Science* 2007;**316**:1488–1491.
- Willer CJ, Sanna S, Jackson AU, Scuteri A, Bonnycastle LL, Clarke R, Heath SC, Timpson NJ, Najjar SS, Stringham HM, Strait J, Duren WL, Maschio A, Busonero F, Mulas A, Albai G, Swift AJ, Morken MA, Narisu N, Bennett D, Parish S, Shen H, Galan P, Meneton P, Hercberg S, Zelenika D, Chen WM, Li Y, Scott LJ, Scheet PA, Sundvall J, Watanabe RM, Nagaraja R, Ebrahim S, Lawlor DA, Ben-Shlomo Y, vey-Smith G, Shuldiner AR, Collins R, Bergman RN, Uda M, Tuomilehto J, Cao A, Collins FS, Lakatta E, Lathrop GM, Boehnke M, Schlessinger D, Mohlke KL, Abecasis GR. Newly identified loci that influence lipid concentrations and risk of coronary artery disease. *Nat Genet* 2008;**40**:161–169.
- Wallace C, Newhouse SJ, Braund P, Zhang F, Tobin M, Ahmadi K, Dobson RJ, Marciano AC, Hajat C, Burton P, Deloukas P, Brown N, Connell JM, Dominiczak A, Lathrop GM, Webster J, Farrall M, Spector TD, Samani NJ, Caulfield MJ, Munroe PB. Genome-wide association study identifies genes for biomarkers of cardiovascular disease: serum urate and dyslipidemia. *Am J Hum Genet* 2008;**82**:139–149.
- Kathiresan S, Melander O, Guiducci C, Surti A, Burt NP, Rieder MJ, Cooper GM, Roos C, Voight BF, Havulinna AS, Wahlstrand B, Hedner T, Corella D, Tai ES, Ordovas JM, Berglund G, Vartiainen E, Jousilahti P, Hedblad B, Taskinen MR, Newton-Cheh C, Salomaa V, Peltonen L, Groop L, Altshuler DM, Orho-Melander M. Six new loci associated with blood low-density lipoprotein cholesterol, high-density lipoprotein cholesterol or triglycerides in humans. *Nat Genet* 2008;**40**:189–197.
- Aulchenko YS. Loci influencing lipid levels and coronary heart disease risk in 16 European population cohorts. *Nat Genet* 2009;**41**:47–55.
- Frayling TM, Timpson NJ, Weedon MN, Zeggini E, Freathy RM, Lindgren CM, Perry JRB, Elliott KS, Lango H, Rayner NW, Shields B, Harries LW, Barrett JC, Ellard S, Groves CJ, Knight B, Patch AM, Ness AR, Ebrahim S, Lawlor DA, Ring SM, Ben-Shlomo Y, Jarvelin MR, Sovio U, Bennett AJ, Melzer D, Ferrucci L, Loos RJF, Barroso I, Wareham NJ, Karpe F, Owen KR, Cardon LR, Walker M, Hitman GA, Palmer CNA, Doney ASF, Morris AD, Smith GD, The Wellcome Trust Case Control Consortium, Hattersley AT, McCarthy MI. A common variant in the FTO gene is associated with body mass index and predisposes to childhood and adult obesity. *Science* 2007;**316**:889–894.
- Saxena R, Voight BF, Lyssenko V, Burt NP, de Bakker PIW, Chen H, Roix JJ, Kathiresan S, Hirschhorn JN, Daly MJ, Hughes TE, Groop L, Altshuler D, Almgren P, Florez JC, Meyer J, Ardlie K, Bengtsson Bostrom K, Isomaa B, Lettre G, Lindblad U, Lyon HN, Melander O, Newton-Cheh C, Nilsson P, Orho-Melander M, Rastam L, Speliotes EK, Taskinen MR, Tuomi T, Guiducci C, Berglund A, Carlson J, Gianniny L, Hackett R, Hall L, Holmkvist J, Laurila E, Sjogren M, Sterner M, Surti A, Svensson M, Svensson M, Tewhey R, Blumensiel B, Parkin M, DeFelicis M, Barry R, Brodeur W, Camarata J, Chia N, Fava M, Gibbons J, Handsaker B, Healy C, Nguyen K, Gates C, Sougnez C, Gage D, Nizzari M, Gabriel SB, Chirm GW, Ma Q, Parikh H, Richardson D, Ricke D, Purcell S, Diabetes Genetics Initiative of Broad Institute of Harvard and MIT, Lund University, ovartis Institutes of BioMedical Research. Genome-wide association analysis identifies loci for type 2 diabetes and triglyceride levels. *Science* 2007;**316**:1331–1336.
- Miller GJ, Bauer KA, Barzegar S, Foley AJ, Mitchell JP, Cooper JA, Rosenberg RD. The effects of quality and timing of venepuncture on markers of blood coagulation in healthy middle-aged men. *Thromb Haemost* 1995;**73**:82–86.
- British Regional Heart Study. <http://www.ucl.ac.uk/pcph/research/brhs/index.htm>. 2009. Ref Type: Internet Communication.
- Gardener EA, Huppert FA, Guralnik JM, Melzer D. Middle-aged and mobility-limited: prevalence of disability and symptom attributions in a national survey. *J Gen Intern Med* 2006;**21**:1091–1096.
- Fowkes FG, Housley E, Cawood EHH, MacIntyre CCA, Ruckley CV, Prescott RJ. Edinburgh Artery Study: prevalence of asymptomatic and symptomatic peripheral arterial disease in the general population. *Int J Epidemiol* 1991;**20**:384–392.
- Power C, Elliott J. Cohort profile: 1958 British birth cohort (National Child Development Study). *Int J Epidemiol* 2006;**35**:34–41.
- Wadsworth M, Kuh D, Richards M, Hardy R. Cohort profile: the 1946 National Birth Cohort (MRC National Survey of Health and Development). *Int J Epidemiol* 2006;**35**:49–54.

26. Marmot MG, Stansfeld S, Patel C, North F, Head J, White I, Brunner E, Feeney A, Marmot MG, Smith GD. Health inequalities among British civil servants: the Whitehall II study. *Lancet* 1991;**337**:1387–1393.
27. Ye S, Dunleavy L, Bannister W, Day LB, Tapper W, Collins AR, Day IN, Simpson I. Independent effects of the -219 G > T and epsilon 2/epsilon 3/epsilon 4 polymorphisms in the apolipoprotein E gene on coronary artery disease: the Southampton Atherosclerosis Study. *Eur J Hum Genet* 2003;**11**:437–443.
28. Theorell T, Tsutsumi A, Hallquist J, Reuterwall C, Hogstedt C, Fredlund P, Emlund N, Johnson JV. Decision latitude, job strain, and myocardial infarction: a study of working men in Stockholm. The SHEEP Study Group. Stockholm Heart epidemiology Program. *Am J Public Health* 1998;**88**:382–388.
29. Stephens J, Hurel S, Acharya J, Humphries S. An interaction between the interleukin-6 -174G > C gene variant and urinary protein excretion influences plasma oxidative stress in subjects with type 2 diabetes. *Cardiovas Diabetol* 2004;**3**:2.
30. Ireland H, Konstantoulas CJ, Cooper JA, Hawe E, Humphries SE, Mather H, Goodall AH, Hogwood J, Juhan-Vague I, Yudkin JS, Di Minno G, Margaglione M, Hamsten A, Miller GJ, Bauer KA, Kim YT, Stearns-Kurosawa DJ, Kurosawa S. EPCR Ser219Gly: Elevated sEPCR, prothrombin F1 + 2, risk for coronary heart disease, and increased sEPCR shedding *in vitro*. *Atherosclerosis* 2005;**183**:283–292.
31. Caulfield M, Munroe P, Pembroke J, Samani N, Dominiczak A, Brown M, Benjamin N, Webster J, Ratcliffe P, O'Shea S, Papp J, Taylor E, Dobson R, Knight J, Newhouse S, Hooper J, Lee W, Brain N, Clayton D, Lathrop GM, Farrall M, Connell J. Genome-wide mapping of human loci for essential hypertension. *Lancet* 2003;**361**:2118–2123.
32. Preuss M, König IR, Thompson JR, Erdmann J, Absher D, Assimes TL, Blankenberg S, Boerwinkle E, Chen L, Cupples LA, Hall AS, Halperin E, Hengstenberg C, Holm H, Laaksonen R, Li M, März W, McPherson R, Musunuru K, Nelson CP, Susan Burnett M, Epstein SE, O'Donnell CJ, Quertermous T, Rader DJ, Roberts R, Schillert A, Stefansson K, Stewart AFR, Thorleifsson G, Voight BF, Wells GA, Ziegler A, Kathiresan S, Reilly MP, Samani NJ, Schunkert H. Design of the Coronary ARtery Disease Genome-Wide Replication And Meta-Analysis (CARDIoGRAM) Study/clinical perspective. *Circ Cardiovasc Genet* 2010;**3**:475–483.
33. Benjamini Y, Hochberg Y. Controlling the false discovery rate: a practical and powerful approach to multiple testing. *J R Stat Soc B (Methodological)* 1995;**57**:289–300.
34. Storey JD. A direct approach to false discovery rates. *J R Stat Soc B (Statistical Methodology)* 2002;**64**:479–498.
35. Teslovich TM, Musunuru K, Smith AV, Edmondson AC, Stylianou IM, Koseki M, Pirruccello JP, Ripatti S, Chasman DI, Willer CJ, Johansen CT, Fouchier SW, Isaacs A, Peloso GM, Barbalic M, Ricketts SL, Bis JC, Aulchenko YS, Thorleifsson G, Feitosa MF, Chambers J, Orho-Melander M, Melander O, Johnson T, Li X, Guo X, Li M, Shin Cho Y, Jin Go M, Jin Kim Y, Lee JY, Park T, Kim K, Sim X, Twee-Hee Ong R, Croteau-Chonka DC, Lange LA, Smith JD, Song K, Hua Zhao J, Yuan X, Luan J, Lamina C, Ziegler A, Zhang W, Zee RYL, Wright AF, Witteman JCM, Wilson JF, Willemssen G, Wichmann HE, Whitfield JB, Waterworth DM, Wareham NJ, Waeber G, Vollenweider P, Voight BF, Vitart V, Uitterlinden AG, Uda M, Tuomilehto J, Thompson JR, Tanaka T, Surakka I, Stringham HM, Spector TD, Soranzo N, Smit JH, Sinisalo J, Silander K, Sijbrands EJG, Scuteri A, Scott J, Schlessinger D, Sanna S, Salomaa V, Saharinen J, Sabatti C, Ruokonen A, Rudan I, Rose LM, Roberts R, Rieder M, Psaty BM, Pramstaller PP, Pichler I, Perola M, Penninx BWJH, Pedersen NL, Pattaro C, Parker AN, Pare G, Oostra BA, Donnell CJ, Nieminen MS, Nickerson DA, Montgomery GW, Meitinger T, McPherson R, McCarthy MI, McArdle W, Masson D, Martin NG, Marroni F, Mangino M, Magnusson PKE, Lucas G, Luben R, Loos RJF, Lokki ML, Lettre G, Langenberg C, Launer LJ, Lakatta EG, Laaksonen R, Kyvik KO, Kronenberg F, König IR, Khaw KT, Kaprio J, Kaplan LM, Johansson A, Jarvelin MR, Cecile JWJ, Ingelsson E, Igl W, Kees Hovingh G, Hottenga JJ, Hofman A, Hicks AA, Hengstenberg C, Heid IM, Hayward C, Havulinna AS, Hastie ND, Harris TB, Haritunians T, Hall AS, Gyllenstein U, Guiducci C, Groop LC, Gonzalez E, Gieger C, Freimer NB, Ferrucci L, Erdmann J, Elliott P, Ejebe KG, Doring A, Dominiczak AF, Demissie S, Deloukas P, de Geus EJC, de Faire U, Crawford G, Collins FS, Chen YD, Caulfield MJ, Campbell H, Burt NP, Bonnycastle LL, Boomsma DI, Boekholdt SM, Bergman RN, Barroso I, Bandinelli S, Ballantyne CM, Assimes TL, Quertermous T, Altschuler D, Seielstad M, Wong TY, Tai E-S, Feranil AB, Kuzawa CW, Adair LS, Taylor HA Jr, Borecki IB, Gabriel SB, Wilson JG, Holm H, Thorsteinsdottir U, Gudnason V, Krauss RM, Mohlke KL, Ordovas JM, Munroe PB, Kooner JS, Tall AR, Hegele RA, Kastelein JJP, Schadt EE, Rotter JI, Boerwinkle E, Strachan DP, Mooser V, Stefansson K, Reilly MP, Samani NJ, Schunkert H, Cupples LA, Sandhu MS, Ridker PM, Rader DJ, van Duijn CM, Peltonen L, Abecasis GR, Boehnke M, Kathiresan S. Biological, clinical and population relevance of 95 loci for blood lipids. *Nature* 2010;**466**:707–713.
36. Erdmann J, Groshennig A, Braund PS, König IR, Hengstenberg C, Hall AS, Linsel-Nitschke P, Kathiresan S, Wright B, Tregouet DA, Cambien F, Bruse P, Aherrahrou Z, Wagner AK, Stark K, Schwartz SM, Salomaa V, Elosua R, Melander O, Voight BF, O'Donnell CJ, Peltonen L, Siscovick DS, Altschuler D, Merlini PA, Peyvandi F, Bernardinelli L, Ardissino D, Schillert A, Blankenberg S, Zeller T, Wild P, Schwarz DF, Tiret L, Perret C, Schreiber S, Mokhtari NEE, Schafer A, März W, Renner W, Bugert P, Kluter H, Schrezenmeier J, Rubin D, Ball SG, Balmforth AJ, Wichmann HE, Meitinger T, Fischer M, Meisinger C, Baumert J, Peters A, Ouwehand WH, Deloukas P, Thompson JR, Ziegler A, Samani NJ, Schunkert H. New susceptibility locus for coronary artery disease on chromosome 3q22.3. *Nat Genet* 2009;**41**:280–282.
37. Visscher PM, Montgomery GW. Genome-wide association studies and human disease: from trickle to flood. *JAMA* 2009;**302**:2028–2029.
38. Gudbjartsson DF, Bjornsdottir US, Halapi E, Helgadóttir A, Sulem P, Jonsdóttir GM, Thorleifsson G, Helgadóttir H, Steinthorsdóttir V, Stefansson H, Williams C, Hui J, Beilby J, Warrington NM, James A, Palmer LJ, Koppelman GH, Heinzmann A, Krueger M, Boezen HM, Wheatley A, Altmuller J, Shin HD, Uh ST, Cheong HS, Jonsdóttir B, Gislason D, Park CS, Rasmussen LM, Porsbjerg C, Hansen JW, Backer V, Werge T, Janson C, Jonsson UB, Ng MCY, Chan J, So WY, Ma R, Shah SH, Granger CB, Quyyumi AA, Levey AI, Vaccarino V, Reilly MP, Rader DJ, Williams MJA, van Rij AM, Jones GT, Trabetti E, Malerba G, Pignatti PF, Boner A, Pescollerung L, Girelli D, Olivieri O, Martinelli N, Ludviksson BR, Ludviksdóttir D, Eijolfsson GI, Arnar D, Thorgeirsson G, Deichmann K, Thompson PJ, Wjst M, Hall IP, Postma DS, Gislason T, Gulcher J, Kong A, Jonsdóttir I, Thorsteinsdóttir U, Stefansson K. Sequence variants affecting eosinophil numbers associate with asthma and myocardial infarction. *Nat Genet* 2009;**41**:342–347.
39. Hunt KA, Zernakova A, Turner G, Heap GAR, Franke L, Bruinenberg M, Romanos J, Dinesen LC, Ryan AW, Panesar D, Gwilliam R, Takeuchi F, McLallan WM, Holmes GKT, Howdle HS, Walters JRF, Sanders DS, Playford RJ, Trynka G, Mulder CJJ, Mearin ML, Verbeek WHM, Trimble V, Stevens FM, O'Morain C, Kennedy NP, Kelleher D, Pennington DJ, Strachan DP, McArdle WL, Mein CA, Wapenaar MC, Deloukas P, McGinnis R, McManus R, Wijmenga C, van Heel DA. Newly identified genetic risk variants for celiac disease related to the immune response. *Nat Genet* 2008;**40**:395–402.
40. Stahl EA, Raychaudhuri S, Remmers EF, Xie G, Eyre S, Thomson BP, Li Y, Kurreeman FAS, Zernakova A, Hinks A, Guiducci C, Chen R, Alfredsson L, Amos CI, Ardlie KG, Barton A, Bowes J, Brouwer E, Burt NP, Catanese JJ, Coblyn J, Coenen MJH, Costenbader KH, Criswell LA, Crusius JB, Cui J, de Bakker PIW, De Jager PL, Ding B, Emery P, Flynn E, Harrison P, Hocking LJ, Huizinga TWJ, Kastner DL, Ke X, Lee AT, Liu X, Martin P, Morgan AW, Padyukov L, Posthumus MD, Radstake TRDJ, Reid DM, Seielstad M, Seldin MF, Shadick NA, Steer S, Tak PP, Thomson V, van der Helm-van Mil A, van der Horst-Bruinsma I, van der Schoot CE, van Riel PLCM, Weinblatt ME, Wilson AG, Wolbink GJ, Wordsworth BP, Wijmenga C, Karlson EW, Toes REM, de Vries N, Begovich AB, Worthington J, Siminovitsh KA, Gregersen PK, Klareskog L, Plenge RM. Genome-wide association study meta-analysis identifies seven new rheumatoid arthritis risk loci. *Nat Genet* 2010;**42**:508–514.
41. Coronary Artery Disease Consortium. Large scale association analysis of novel genetic loci for coronary artery disease. *Arterioscler Thromb Vasc Biol* 2009;**29**:774–780.
42. Karvanen J, Silander K, Kee F, Tiret L, Salomaa V, Kuulasmaa K, Wiklund PG, Virtamo J, Saarela O, Perret C, Perola M, Peltonen L, Cambien F, Erdmann J, Samani NJ, Schunkert H, Evans A. The impact of newly identified loci on coronary heart disease, stroke and total mortality in the MORGAM prospective cohorts. *Genet Epidemiol* 2009;**33**:237–246.
43. Sarwar N, Danesh J, Eiriksdóttir G, Sigurdsson G, Wareham N, Bingham S, Boekholdt SM, Khaw KT, Gudnason V. Triglycerides and the risk of coronary heart disease: 10 158 incident cases among 262 525 participants in 29 Western Prospective Studies. *Circulation* 2007;**115**:450–458.
44. Sofat R, Hingorani AD, Smeeth L, Humphries SE, Talmud PJ, Cooper J, Shah T, Sandhu MS, Ricketts SL, Boekholdt SM, Wareham N, Khaw KT, Kumari M, Kivimaki M, Marmot M, Asselbergs FW, van der Harst P, Dullaart RP, Navis G, van Veldhuisen DJ, van Gilst WH, Thompson JF, McCaskie P, Palmer LJ, Arca M, Quagliariini F, Gaudio C, Cambien F, Nicaud V, Poirer O, Gudnason V, Isaacs A, Witteman JC, van Duijn CM, Pencina M, Vasani RS, D'Agostino RBS, Ordovas J, Li TY, Kakko S, Kauma H, Savolainen MJ, Kesäniemi YA, Sandhofer A, Paulweber B, Sorli JV, Goto A, Yokoyama S, Okumura K, Horne BD, Packard C, Freeman D, Ford I, Sattar N, McCormack V, Lawlor DA, Ebrahim S, Smith GD, Kastelein JJ, Deanfield J, Casas JP. Separating

- the mechanism-based and off-target actions of cholesteryl ester transfer protein inhibitors with CETP gene polymorphisms. *Circulation* 2010;**121**:52–62.
45. Scott LJ, Mohlke KL, Bonnycastle LL, Willer CJ, Li Y, Duren WL, Erdos MR, Stringham HM, Chines PS, Jackson AU, Prokunina-Olsson L, Ding CJ, Swift AJ, Narisu N, Hu T, Pruim R, Xiao R, Li XY, Conneely KN, Riebow NL, Sprau AG, Tong M, White PP, Hetrick KN, Barnhart MW, Bark CW, Goldstein JL, Watkins L, Xiang F, Saramies J, Buchanan TA, Watanabe RM, Valle TT, Kinnunen L, Abecasis GR, Pugh EW, Doheny KF, Bergman RN, Tuomilehto J, Collins FS, Boehnke M. A Genome-Wide Association Study of type 2 diabetes in Finns detects multiple susceptibility variants. *Science* 2007;**316**:1341–1345.
 46. Cholesterol Treatment Trialists' (CTT) Collaboration. Efficacy and safety of more intensive lowering of LDL cholesterol: a meta-analysis of data from 170,000 participants in 26 randomised trials. *Lancet* 2010;**376**:1670–1681.
 47. Triglyceride Coronary Disease Genetics Consortium, The Emerging Risk Factors Collaboration. Triglyceride-mediated pathways and coronary disease: collaborative analysis of 101 studies. *Lancet* 2010;**375**:1634–1639.
 48. Danesh J, Kaptoge S, Mann AG, Sarwar N, Wood A, Angleman SB, Wensley F, Higgins JPT, Lennon L, Eiriksdottir G, Rumley A, Whincup PH, Lowe GDO, Gudnason V. Long-term interleukin-6 levels and subsequent risk of coronary heart disease: two new prospective studies and a systematic review. *PLoS Med* 2008;**5**:e78.
 49. Schunkert H, Konig IR, Kathiresan S, Reilly MP, Assimes TL, Holm H, Preuss M, Stewart AFR, Barbalic M, Gieger C, Absher D, Aherrahrou Z, Allayee H, Altshuler D, Anand SS, Andersen K, Anderson JL, Ardisino D, Ball SG, Balmforth AJ, Barnes TA, Becker DM, Becker LC, Berger K, Bis JC, Boekholdt SM, Boerwinkle E, Braund PS, Brown MJ, Burnett MS, Buyschaert I, Carlquist JF, Chen L, Cichon S, Codd V, Davies RW, Dedoussis G, Dehghan A, Demissie S, Devaney JM, Diemert P, Do R, Doering A, Eifert S, Mokhtari NEE, Ellis SG, Elosua R, Engert JC, Epstein SE, de Faire U, Fischer M, Folsom AR, Freyer J, Gigante B, Girelli D, Gretarsdottir S, Gudnason V, Gulcher JR, Halperin E, Hammond N, Hazen SL, Hofman A, Horne BD, Illig T, Iribarren C, Jones GT, Jukema JW, Kaiser MA, Kaplan LM, Kastelein JJP, Khaw KT, Knowles JW, Kolovou G, Kong A, Laaksonen R, Lambrechts D, Leander K, Lettre G, Li M, Lieb W, Loley C, Lotery AJ, Mannucci PM, Maouche S, Martinelli N, McKeown PP, Meisinger C, Meitinger T, Melander O, Merlini PA, Mooser V, Morgan T, Muhleisen TW, Muhlestein JB, Munzel T, Musunuru K, Nahrstaedt J, Nelson CP, Nothen MM, Olivieri O, Patel RS, Patterson CC, Peters A, Peyvandi F, Qu L, Quyyumi AA, Rader DJ, Rallidis LS, Rice C, Rosendaal FR, Rubin D, Salomaa V, Sampietro ML, Sandhu MS, Schadt E, Schafer A, Schillert A, Schreiber S, Schrezenmeier J, Schwartz SM, Siscovick DS, Sivananthan M, Sivapalaratnam S, Smith A, Smith TB, Snoop JD, Soranzo N, Spertus JA, Stark K, Stirrups K, Stoll M, Tang WHW, Tennstedt S, Thorgeirsson G, Thorleifsson G, Tomaszewski M, Uitterlinden AG, van Rij AM, Voight BF, Wareham NJ, Wells GA, Wichmann HE, Wild PS, Willenborg C, Wittteman JCM, Wright BJ, Ye S, Zeller T, Ziegler A, Cambien F, Goodall AH, Cupples LA, Quertermous T, Marz W, Hengstenberg C, Blankenberg S, Ouwehand WH, Hall AS, Deloukas P, Thompson JR, Stefansson K, Roberts R, Thorsteinsdottir U, O'Donnell CJ, McPherson R, Erdmann J. Large-scale association analysis identifies 13 new susceptibility loci for coronary artery disease. *Nat Genet* 2011 March 6; advance online publication.
 50. Sagoo GS, Tatt I, Salanti G, Butterworth AS, Sarwar N, van Maarte M, Jukema JW, Viman B, Kastelein JJP, Bennet AM, de Faire U, Danesh J, Higgins JPT. Seven lipoprotein lipase gene polymorphisms, lipid fractions, and coronary disease: a HuGE association review and meta-analysis. *Am J Epidemiol* 2008;**168**:1233–1246.
 51. Talmud P, Cooper J, Hattori H, Miller I, Miller G, Humphries S. The apolipoprotein A-V genotype and plasma apolipoprotein A-V and triglyceride levels: prospective risk of type 2 diabetes. Results from the Northwick Park Heart Study II. *Diabetologia* 2006;**49**:2337–2340.
 52. Vaessen SFC, Schaap FG, Kuivenhoven JA, Groen AK, Hutten BA, Boekholdt SM, Hattori H, Sandhu MS, Bingham SA, Luben R, Palmen JA, Wareham NJ, Humphries SE, Kastelein JJP, Talmud PJ, Khaw KT. Apolipoprotein A-V, triglycerides and risk of coronary artery disease: the prospective Epic-Norfolk Population Study. *J Lipid Res* 2006;**47**:2064–2070.
 53. Freathy RM, Timpson NJ, Lawlor DA, Pouta A, Ben-Shlomo Y, Ruukonen A, Ebrahim S, Shields B, Zeggini E, Weedon MN, Lindgren CM, Lango H, Melzer D, Ferrucci L, Paolisso G, Neville MJ, Karpe F, Palmer CNA, Morris AD, Elliott P, Jarvelin MR, vey Smith G, McCarthy MI, Hattersley AT, Frayling TM. Common variation in the FTO gene alters diabetes-related metabolic traits to the extent expected given its effect on BMI. *Diabetes* 2008;**57**:1419–1426.
 54. Zimmermann E, Kring SII, Berentzen TL, Holst C, Pers TH, Hansen T, Pedersen O, Sorensen TIA, Jess T. Fatness-associated FTO gene variant increases mortality independent of fatness—in cohorts of Danish men. *PLoS ONE* 2009;**4**:e4428.