

ORIGINAL ARTICLE

Evidence of a neo-sex chromosome in birds

I Pala, S Naurin, M Stervander, D Hasselquist, S Bensch and B Hansson

Neo-sex chromosomes often originate from sex chromosome–autosome fusions and constitute an important basis for the study of gene degeneration and expression in a sex chromosomal context. Neo-sex chromosomes are known from many animal and plant lineages, but have not been reported in birds, a group in which genome organization seems particularly stable. Following indications of sex linkage and unexpected sex-biased gene expression in warblers (Sylvioidea; Passeriformes), we have conducted an extensive marker analysis targeting 31 orthologues of loci on zebra finch chromosome 4a in five species, representative of independent branches of Passerida. We identified a region of sex linkage covering approximately the first half (10 Mb) of chromosome 4a, and associated to both Z and W chromosomes, in three Sylvioidea passerine species. Linkage analysis in an extended pedigree of one species additionally confirmed the association between this part of chromosome 4a and the Z chromosome. Markers located between 10 and 21 Mb of chromosome 4a showed no signs of sex linkage, suggesting that only half of the chromosome was involved in this transition. No sex linkage was observed in non-Sylvioidea passerines, indicating that the neo-sex chromosome arose at the base of the Sylvioidea branch of the avian phylogeny, at 47.4–37.6 millions years ago (MYA), substantially later than the ancestral sex chromosomes (150 MYA). We hypothesize that the gene content of chromosome 4a might be relevant in its transition to a sex chromosome, based on the presence of genes (for example, the *androgen receptor*) that could offer a selective advantage when associated to Z-linked sex determination loci. *Heredity* (2012) **108**, 264–272; doi:10.1038/hdy.2011.70; published online 7 September 2011

Keywords: neo-sex chromosome; avian chromosome evolution; Tgu4a

INTRODUCTION

Newer parts of sex chromosomes, generated by fusion or translocation events with an autosome, offer unique opportunities to study the dynamics of sex chromosome evolution in systems in which degeneration and dosage compensation have not yet been fully established. Neo-sex chromosomes have been extensively studied as models of chromosome evolution in different organismal groups, such as plants (Nicolas *et al.*, 2005), insects (Bachtrog, 2005; Flores *et al.*, 2008) and mammals (Zhou *et al.*, 2008). Sexual antagonistic selection caused by conflicts between the sexes has been proposed as a major agent in the evolution of sex chromosomes (Rice, 1987), and sex-linked genes have in turn been predicted to play an important role in the speciation process, as shown in a recent study of a neo-sex chromosome in sticklebacks (*Gasterosteus aculeatus*) (Kitano *et al.*, 2009).

The occurrence of neo-sex chromosomes implies a certain level of plasticity in the organization of the genome, and is of particular interest in groups such as birds, in which sex chromosomes show a remarkable stability over evolutionary time, and in which overall genomic and chromosomal organizations are highly conserved (Griffin *et al.*, 2007; Nanda *et al.*, 2008). Limited structural variation is apparent in the comparison between the two model avian genomes, with only two major interchromosomal rearrangements distinguishing the chicken (*Gallus gallus*) and the zebra finch (*Taeniopygia guttata*) genome organization (Itoh and Arnold, 2005). First, a fission of chromosome 1 is evident in the zebra finch (as well as in other passerines, for example, Dawson *et al.*, 2007; Stapley *et al.*, 2008). Secondly, chicken chromosome 4 (Gga4) has resulted from a fusion of ancestral chromosomes 4 and 10 (Griffin *et al.*, 2007). In the zebra

finch genome, Gga4 is represented by two different chromosomes: Tgu4 and Tgu4a according to the zebra finch nomenclature (Itoh and Arnold, 2005; Völker *et al.*, 2010).

Recently, we have found indications that parts of the orthologue to Tgu4a could be sex-linked in two species of warblers (family Sylviidae): the common whitethroat (*Sylvia communis*) and the great reed warbler (*Acrocephalus arundinaceus*). A molecular marker (G61) located at the beginning of chromosome 4a (position 0.9 Mb on Tgu4a) is sex-linked in the great reed warbler (Dawson *et al.*, 2007), and a large region of this chromosome (approximately 5 Mb), presenting high levels of sex-biased expression, was identified in the common whitethroat (S Naurin *et al.*, unpublished data). No signs of sex linkage of the orthologous parts of chromosome 4a were found in the chicken or in the zebra finch (Stapley *et al.*, 2008).

The aim of this study was to investigate the hypothesis of occurrence of a neo-sex chromosome in birds and to assess when it would have arisen in evolutionary time. We have gathered extensive molecular data in five bird species that are representative of independent branches of Passerida, according to two alternative phylogenies (Barker *et al.*, 2004; Alström *et al.*, 2006). Within the Sylvioidea (*sensu* Alström *et al.* (2006)), we selected the skylark (*Alauda arvensis*) in addition to the great reed warbler and the common whitethroat, and, as representatives of branches outside Sylvioidea, we selected the goldcrest (*Regulus regulus*) and the blue tit (*Cyanistes caeruleus*).

We designed primers to amplify and sequence a total of 31 loci (introns and exons) distributed over chromosome 4a to determine the extent of sex linkage and the association of these markers to the Z and W chromosomes in the five passerine species. In one species, the great

reed warbler, we evaluated linkage between markers on chromosome 4a and markers located on the Z chromosome, by recombination-based linkage analyses in an extended pedigree (Hansson *et al.*, 2005). The cytochrome *b* and myoglobin intron II sequence data sets of Alström *et al.* (2006) were re-analysed, with the addition of cytochrome *b* sequences of a few species, to date the origin of the neo-sex chromosome in relation to the approximately 150 MY old ancestral sex chromosomes (Handley *et al.*, 2004; Nam and Ellegren, 2008). In addition, we have explored the gene content of chromosome 4a as a putative driver underlying the neo-sex chromosome maintenance.

MATERIALS AND METHODS

Marker selection and primer design

A search for orthologues of annotated genes within Tgu4a of the zebra finch genome (build taeGut3.2.4 at Ensembl; www.ensembl.org) was performed in the chicken genome (build WASHUC2.1). Sequences classified as orthologues by Ensembl were aligned using the Geneious Align and MUSCLE Align options in Geneious 5.0.3 (Drummond *et al.*, 2010). Degenerate primers were designed using the primer design module in Geneious based on Primer3 (Rozen and Skaletsky, 2000) to either amplify introns or coding sequences (Supplementary Tables S1 and S2). A graphical representation of the location of the 31 loci on the zebra finch chromosome 4a (Tgu4a) and on the chicken chromosome 4 (Gga4) was obtained using MapChart 2.2 (Voorrips, 2002).

Phylogenetics

The data sets of Alström *et al.* (2006) were re-analysed with the addition of cytochrome *b* sequences of species present in this study, which were not included in the initial data set (*S. communis* and *C. caeruleus*; Supplementary Table S3). Cytochrome *b* (1038 bp) and myoglobin intron II (653–711 bp) sequences were aligned using the Geneious Align in Geneious 5.0.3 (Drummond *et al.*, 2010), and then concatenated according to taxon. Phylogenies of the concatenated data set were estimated using MrBayes v. 3.1.2 (Huelsenbeck and Ronquist, 2001; Ronquist and Huelsenbeck, 2003), running four Markov chains for 10 million generations in two parallel replicates, with chain heating parameter set to 0.15. Trees were sampled at intervals of 1000 generations, and posterior probabilities were calculated from 7500 trees after excluding 2 500 000 generations as burn-in. Following Alström *et al.* (2006), the cytochrome *b* partition was analysed under a general time-reversible model assuming rate variation across sites following a discrete gamma distribution (G) with four rate categories and an estimated proportion of invariant sites, and the myoglobin intron II partition was analysed under a general time-reversible-G without invariant sites. The average standard deviations of split frequencies were, for the last 5 000 000 generations, stable at <0.01, and in addition Tracer v. 1.5.0 (Rambaut, 2007) was used to manually inspect plots of the likelihood scores, to ensure that they had reached stationarity.

Samples

DNA from individuals from the five species included in this study (see Table 1 for sample size) was obtained from the following sources: the Molecular Ecology and Evolution Lab, Department of Biology, Lund University, Sweden (great reed warbler, common whitethroat and blue tit); P Zehindjiev, Institute of Zoology, Bulgarian Academy of Sciences, Sofia, Bulgaria (skylark); and the Ottenby Bird Observatory, Degerhamn, Sweden (goldcrest). Individual samples were sexed both morphologically and through the amplification of Z and W genes (using either the P2/P8 primer pair according to Griffiths *et al.* (1998) or the TGZ-002 primer pair according to Dawson, University of Sheffield).

Marker and sequence analysis

Amplification of the 31 loci was carried out in 10 µl volume reactions with 25–30 ng DNA, using the Qiagen Multiplex kit (Qiagen, Hilden, Germany). Polymerase chain reaction conditions were as follows: pre-heating at 95 °C for 15 min, 35 cycles at 94 °C for 30 s, annealing temperature (T_a) for 45 s, 72 °C for 1 min and a final extension at 72 °C for 10 min (locus-specific T_a is given in Supplementary Table S2). Amplification was followed by direct sequencing using BigDye Terminator Sequencing Kit (Applied Biosystems, Foster City, CA,

USA) according to the manufacturer's recommendations. Zebra finch samples were used as positive controls for amplification. The identity of the sequences was confirmed through BLAST search. Variation among sequences of male (ZZ) and female (ZW) samples of the five species was identified using Geneious (Drummond *et al.*, 2010).

Sex linkage

The assessment of sex linkage of the selected markers was performed through the comparison of the sequencing products of male and female samples of each species. Although some previous indication of sex linkage had been obtained for two of the species analysed here (the great reed warbler (Dawson *et al.*, 2007) and the common whitethroat (Naurin *et al.*, unpublished)), no indication was obtained regarding the number of chromosome 4a markers involved nor the prevalence of the sex-linked area in the different species. Therefore, two starting hypotheses were considered for the analysis of each locus: either the locus would be autosomal, as in zebra finch, or it would exhibit sex-specific patterns indicating sex linkage. According to the first hypothesis, no sex-specific polymorphism should be found in the comparison of male and female sequences. Males and females could either be homozygous or heterozygous at polymorphic sites, and heterozygous individuals should be identified in both sexes. Conversely, in the case of sex linkage (for example, the physical association to a sex chromosome), two possible scenarios should be taken into account: the exclusive association with one of the sex chromosomes or the amplification of alleles linked to both Z and W chromosomes. In the case of association to both sex chromosomes, females should be 'heterozygous' at distinct positions representing sequence variation between the Z and W chromosomes, whereas the males should be homozygous (ZZ) at these sites. In the case of association to the Z chromosome only, or if only the Z copy was amplified, males should additionally be either homozygous or heterozygous at variable sites, whereas females should be hemizygous at variable positions detected in males (this single sequence corresponding to the single Z associated copy). The specific polymorphic sites that allowed for the assessment of sex linkage and association with either the Z or W chromosome were determined per species and per locus. Absence of informative polymorphic sites was indicated as 'm' (monomorphic; Table 1).

We sequenced a small number of individuals at each of the 31 loci in each of the five species (Table 1). Thus, at each SNP/indel at each locus in each species, the statistical support of sex linkage is weak; however, this is not the case over a chromosome region holding several loci and polymorphisms. The likelihood that a W-linked pattern would appear by chance at a subset of autosomal loci equals the likelihood that all females are heterozygous and all males are homozygous (given that one female is known to be heterozygous, as we only evaluate polymorphic sites) at a subset of loci in the supposed sex-linked region. This likelihood, $L(W)$, is described by the following expression:

$$L(W) = ((2pq)^{N_{\text{♀}}-1} \times (1-2pq)^{N_{\text{♂}}} \times N_{\text{loci}}! / (K_W! (N_{\text{loci}} - K_W)!),$$

where p and q are the allele frequencies, N the sample sizes and K_W the number of loci with W-linked pattern ($K_W=14$ and $N_{\text{loci}}=17$ in great reed warbler, 16 and 18 in common whitethroat, and 16 and 19 in skylark; Table 1). We also calculated the likelihood that a Z-linked pattern would appear by chance over a set of autosomal loci. This equals the likelihood that all females are homozygous (given that at least one male is heterozygous) at all loci (with a Z-linked polymorphism) in the supposed sex-linked region. This likelihood, $L(Z)$, is described by the following expression:

$$L(Z) = ((1-2pq)^{N_{\text{♀}}} \times N_{\text{loci}}!$$

where p and q are the allele frequencies, and N_{loci} the number of loci with Z-linked pattern (and at least one Z-linked polymorphism; that is, the $Z(0)$ cases in Table 1 are not counted; $N_{\text{loci}}=10$ in great reed warbler, 15 in common whitethroat and 12 in skylark; Table 1). These likelihoods ($L(W)$ and $L(Z)$) depend on the minor allele frequency, which is unknown for most loci. Therefore, we estimated these likelihoods using two different minor allele frequencies: a very low value ($P=0.1$) and a more realistic value (that is, $P=0.30$; measured as the mean allele frequency at four loci located on chromosome 4a that were genotyped in a larger number of great reed warblers; see below). The likelihood functions follow standard probability statistics and were designed in Excel (Microsoft, Redmond, WA, USA), which allowed for

Table 1 Pattern of sex linkage of loci on chromosome 4a in great reed warbler, common whitethroat, skylark, goldcrest and blue tit

<i>Locus tag</i> (<i>tTgu4a</i>)	<i>Tgu4a</i> (Mb)	<i>Great reed</i> <i>warbler</i> (N=2♂/3♀)	<i>Seq</i> (bp)	<i>Common</i> <i>whitethroat</i> (N=3♂/3♀)	<i>Seq</i> (bp)	<i>Skylark</i> (N=2♂/3♀)	<i>Seq</i> (bp)	<i>Goldcrest</i> (N=2♂/3♀)	<i>Seq</i> (bp)	<i>Blue tit</i> (N=3♂/3♀)	<i>Seq</i> (bp)
SYTL4	0.9	Z(2)W(7)	300	Z(15)W(26)	304	Z(3)W(11)	163	a (2)	398	a (5)	351
DIAPH2	1.6	Z(5)	484	Z(1)W(5)	73	Z(3)W(2)	342	a (7)	780	a (2)	346
PCDH11X	2.7	Z(m)W(4)	75	Z(2)	570	Z(3)	563	m	564	a (1)	566
DACH2	4	Z(1)W(5)	93	NA		Z(1)W(4)	107	a (5)	557	a (4)	560
ZNF711	4.4	Z(1)W(4)	607	Z(1)W(1)	631	Z(5)W(10)	620	m	617	a (1)	629
RPS6KA6	4.7	Z(m)W(12)	223	Z(1)W(6)	254	Z(m)W(10)	246	a (6)	779	a (8)	766
ITM2A	5.3	NA		Z(1)W(2)	90	Z(1)W(8)	252	a (4)	475	a (5)	794
TAF9B	5.5	*		Z(25)	482	Z(6)	170	NA		a (6)	115
P2RY4	5.6	Z(1)W(18)	481	W(36)	482	Z(4)W(22)	426	a (5)	473	a (2)	291
AR	6.4	Z(5)W(12)	455	Z(m)W(6)	162	Z(m)W(2)	162	a (4)	324	a (1)	457
ZC3H12B	6.8	Z(m)W(8)	619	Z(1)W(5)	619	Z(m)W(11)	583	a (1)	618	m	629
DDX26B	7	Z(1)W(4)	154	Z(1)W(3)	78	Z(1)W(4)	93	a (2)	604	a (8)	320
SLC9A6	7	Z(m)W(1)	29	Z(4)W(7)	437	Z(7)	860	a (6)	487	a (2)	827
XP_002190721.1	7.9	Z(m)W(7)	51	Z(1)W(6)	112	Z(m)W(6)	97	a (1)	605	a (2)	720
PLS3	8.1	Z(1)W(4)	97	Z(2)W(14)	243	Z(5)W(10)	180	a (9)	464	a (8)	655
WDR44	8.4	Z(m)W(2)	50	Z(6)W(18)	204	Z(m)W(5)	50	a (4)	820	a (2)	73
LONRF3	9.2	Z(2)	620	Z(1)W(12)	158	Z(m)W(15)	288	a (4)	668	a (7)	672
CXorf56	9.4	Z(1)	604	Z(m)W(1)	40	Z(5)W(25)	230	a (1)	150	a (3)	586
LAMP2	9.5	Z(m)W(9)	156	Z(1)W(7)	118	Z(1)W(1)	52	a (2)	137	a (12)	664
THOC2	10.2	a (5)	558	a (4)	98	a (10)	580	a (3)	446	a (3)	575
SMARCA1	11.6	a (1)	112	a (8)	192	a (2)	212	a (3)	282	a (1)	220
RAB39B	11.8	m	307	a (1)	302	a (2)	305	a (1)	307	a (1)	307
IRS4	12.1	a (2)	230	a (3)	570	a (7)	580	a (1)	570	NA	
HMGB3	13	a (3)	24	a (5)	192	a (2)	96	a (4)	450	a (5)	393
MAMLD1	13.2	a (1)	426	a (8)	600	a (13)	547	a (2)	549	a (3)	549
XP_002195404.1	16.5	m	553	a (8)	389	a (12)	576	a (1)	142	a (2)	458
MTMR8	16.8	NA		a (7)	180	a (11)	310	a (1)	272	a (4)	645
SOX3	18.8	a (1)	553	a (3)	562	a (3)	549	a (1)	553	m	556
GABRE	19.2	a (7)	382	a (6)	310	a (28)	514	a (1)	334	a (1)	506
TEX11	20.1	a (10)	744	NA		a (11)	746	a (4)	733	a (2)	460
HTR2C	20.6	a (2)	424	a (3)	505	a (1)	419	a (2)	483	a (1)	438

Locus tag (*Tgu4a*) in the zebra finch genome; number of samples (*N*); sequence patterns (a, autosomal; m, monomorphic; NA, no amplification); length of sequence (*Seq*) comparable between males and females, through direct sequencing. In many cases, the analysable sequence corresponds to a subset of the total amplified product, due to the presence of indels. The total number of polymorphisms indicative of Z or W is shown within parentheses, for each locus. At locus TAF9B, we only obtained a readable sequence from a single great reed warbler female, and despite indication of sex linkage to the W chromosome (see main text), we excluded this locus from further analyses (*). The number of polymorphisms used for the positive assessment of autosomal location (a), that is, rejection of sex linkage, is also indicated within parentheses.

simple handling of specific parameters for the different species and allele frequencies.

Genotyping of additional great reed warbler samples

The inheritance patterns at a subsample of the loci isolated in this study were evaluated using families of a Swedish population of the great reed warbler, comprised within a total sample of 373 individuals collected during the breeding seasons between 1987 and 1997 (for example, Hasselquist, 1998; Bensch *et al.*, 1998).

For simplicity of scoring by standard fragment analysis and the possibility of targeting specific within-locus polymorphic sites, primers (Supplementary Table S4) were designed to amplify indel areas in five selected loci (DIAPH2, RPS6KA6, THOC2, SMARCA1 and GABRE), distributed over chromosome 4a (at respectively, 1.6, 4.7, 10.2, 11.6 and 19.2 Mb). At one locus, RPS6KA6, there was indication of amplification of both a Z (holding the target polymorphism) and a W fragment, and primers were designed outside the conserved area between the gametologues to exclude amplification of the W fragment. All reverse primers were fluorescently labelled and products were amplified using the Qiagen Multiplex kit. Polymerase chain reaction conditions were as follows: pre-heating at 95 °C for 15 min, 35 cycles at 94 °C for 30 s, 56 °C for 45 s, 72 °C for 45 s min and a final extension at 72 °C for 10 min. Alleles were detected in an ABI 3730 capillary sequencer (Applied Biosystems) and analyzed with GENEMAPPER 3.0 (Applied Biosystems).

To estimate allelic frequencies at four of these loci (DIAPH2, RPS6KA6, SMARCA1 and GABRE), 27 unrelated great reed warbler individuals (12 males and 15 females) from the above-mentioned Swedish population were genotyped.

Linkage analysis in the great reed warbler

To evaluate the inheritance pattern and linkage to the Z chromosome of 4a markers, 373 great reed warblers (within an extended pedigree of a total of 402 individuals) were genotyped for loci DIAPH2 and RPS6KA6. The same samples had previously been genotyped for several sex-linked markers: Aar1, VLDLR9, BRM12, BRM15, CHD1Z20, Ase50, 304A, 313AI, 051A, 306A, 092A and G61 (Hansson *et al.*, 2005; Åkesson *et al.*, 2007). Of these, VLDLR9, BRM12, BRM15 and CHD1Z20 are intron markers of known Z-linked genes in chicken (Hansson *et al.*, 2005), Aar1 and Ase50 are microsatellites that BLAST to chromosome Z (Dawson *et al.*, 2007), G61 is a microsatellite that BLASTs to chromosome 4a (Dawson *et al.*, 2007), whereas 304A, 313AI, 051A, 306A and 092A are anonymous amplified fragment length polymorphism markers (Åkesson *et al.*, 2007). We also genotyped three other chromosome 4a markers that did not show any signs of sex linkage, THOC2, SMARCA1 and GABRE, and tested linkage between these and the Z-chromosome loci listed above, as well as to other loci (Ase61, Ase15, Aar3 and 292G) located on *Tgu4/4a* and/or *LG7* (that is, the chromosome homologous to chromosome 4/4a in the great reed warbler; Hansson *et al.*, 2005; Åkesson *et al.*, 2007; Dawson *et al.*, 2007).

Two-point recombination analysis was performed to calculate recombination fractions between all pairs of markers using CRI-MAP 2.4 (Green *et al.*, 1996), and a logarithmic odd (LOD) score >3 was used to assess significant linkage (that is, a significantly lower recombination rate than the 0.5 expected for unlinked markers). One of the autosomal chromosome 4a markers, GABRE, could not be assigned to any other marker at this threshold (most likely due to its isolated location in the telomeric end of chromosome 4a, and thus high expected recombination rate to all other loci included in the analysis, see, for example, Stapley *et al.* (2008)), and was included in the linkage analysis at its expected chromosome 4a location. We determined the most parsimonious ordering of markers within each linkage group (the order with the highest likelihood support) with the options FLIPSN and FIXED in CRI-MAP 2.4 (Green *et al.*, 1996).

Neo-sex chromosome age estimation

To date the evolution of the neo-sex chromosome, the cytochrome *b* and myoglobin data sets were extended with more representatives of Picathartidae, core and basal Corvoidea, Old World and New World suboscines and a New Zealand wren of Acanthisittidae (Supplementary Table S3). Assuming that Acanthisittidae split from other passerines when New Zealand rifted from the West Antarctica 85–82 millions years ago (MYA) (Yan, 1993), and using that as a calibration point, the age of the Sylvioidea clade *sensu* Alström *et al.* (2006) was estimated with BEAST v. 1.5.4 (Drummond and Rambaut, 2007). Sylvioidea was constrained as monophyletic, as were oscines and all non-New Zealand taxa. The prior distribution for the calibration point was uniform over 85–82 MYA. Cytochrome *b* and myoglobin were analysed using substitution models as above, unlinked relaxed clock models (uncorrelated log-normal distribution; Drummond *et al.*, 2006) and a tree prior following the Yule process. Trees were sampled every 5000 generations and the runs covered 100 million generations, of which the first 25% were discarded as burn-in. The results were inspected using Tracer v. 1.5.0 (Rambaut, 2007), ensuring stationarity and effective sample sizes of >200 .

In addition, the mean age for Sylvioidea (Alström *et al.*, 2006) was calculated with TreeAnnotator v. 1.5.4 (Rambaut, 2007) in maximum clade credibility trees based on 100 maximum-likelihood trees each from the non-parametric rate smoothing and penalized likelihood analyses of Barker *et al.* (2004), based on molecular dating of genes *RAG-1* and *RAG-2*, and calibrated to a split from Acanthisittidae 83 MYA. This resulted in an estimated mean age of the Sylvioidea of 38.8 MYA for the non-parametric rate smoothing method and 39.5 MYA for the penalized-likelihood method.

RESULTS

Sex linkage

Our results indicated the presence of a neo-sex chromosome and determined the extent of the sex-linked region. The pattern of sex linkage, based on the presence of sex-specific polymorphisms for the 31 loci with orthologues on Tgu4a (Supplementary Tables S1 and S2) in five different bird species, including warblers and closely related passerines, is shown in Figure 1 and Table 1. The 19 markers located on the first part of chromosome 4a (0.9–9.5 Mb) showed evidence of sex linkage in the great reed warbler, the common whitethroat and the skylark (Figure 1 and Table 1), but not in the species outside the Sylvioidea branch (Figure 2).

Sex linkage and support for the presence of a neo-Z chromosome was assessed by the occurrence of both homozygous and heterozygous sequences in males (corresponding to amplification of the two Z-linked alleles) and the presence of a single sequence at male-specific variable positions in females (corresponding to the single Z-linked allele in females). This pattern was seen in 37 of the 54 locus/species combinations analysed (10 in the great reed warbler, 15 in the common whitethroat and 12 in the skylark). Furthermore, in 45 locus/species combinations, all females were heterozygous at positions in which no variability was observed in males (Table 1). The consistency of the female-specific patterns, the sequence identity and

the large number of loci for which the presence of an additional copy was observed, point towards the presence of a neo-W chromosome in the great reed warbler, the common whitethroat and in the skylark, in addition to the neo-Z chromosome (Table 1).

In 16 locus/species combinations, there were no male-specific variable positions over the analysable sequence area for which males and females could be directly compared (despite their presence in other areas along the Z sequence). In those cases (indicated as Z(m) in Table 1), Z linkage could not be directly assessed from direct sequencing, although, in all cases, the Z sequence in males was also identified in females, in addition to the female-specific W sequence.

At locus P2RY4, common whitethroat females exhibited sequences with no heterozygous sites, but with a high number of fixed polymorphisms (36) when compared with the sequences obtained from males for the same locus (Table 1). When directly comparing the male and female sequences, very weak Z-specific peaks were identifiable in parts of the female sequence, but the very low peak intensity did not allow for the assessment of specific polymorphisms. The observed pattern strongly suggest that the W copy of P2RY4 was being preferentially amplified in common whitethroat females, making a total of 46 locus/species combinations supporting the presence of a neo-W chromosome. A similar pattern, suggesting exclusive W amplification, was observed at locus TAF9B, in the great reed warbler. In this case, however, we could only obtain a readable sequence from one female sample. The high level of ambiguities and the impossibility of extracting information from the remaining females prevented further confirmation of this interpretation, so this locus was excluded from the analysis in the great reed warbler (Table 1).

Even with our small sample of individuals per locus and species, the likelihood that a W-linked pattern would appear by chance at a certain number of loci ($K_W=14, 16$ and 16 in great reed warbler, common whitethroat and skylark, respectively; Table 1) among a set of autosomal loci over the first 10 Mb of chromosome 4a ($N_{\text{loci}}=15, 18$ and 19 in the three species; Table 1) was extremely low in all three species and for the two minor allele frequencies evaluated: $2.5 \times 10^{-24} \leq L(W) \leq 4.6 \times 10^{-15}$. This allows for the rejection with a high confidence level of the null hypothesis of an autosomal location. Likewise, the likelihood ($L(Z)$) that a consistent Z-linked pattern over the first 10 Mb of chromosome 4a would appear by chance at a large set of autosomal loci ($N_{\text{loci}}=10, 15$ and 12 in the three species; Table 1) was extremely low. Assuming a low minor allele frequency ($P=0.1$), $L(Z)$ was equal to 2.6×10^{-3} for the great reed warbler, 1.3×10^{-4} for the common whitethroat and 7.9×10^{-4} for the skylark. Considering a more realistic allele frequency, estimated as the mean allele frequency at four loci in the Swedish great reed warbler population ($P=0.30$), $L(Z)$ for the three species was as low as 8.0×10^{-8} , 2.3×10^{-11} and 3.0×10^{-9} , respectively.

Loci located in the distal part of chromosome 4a (10.2–20.6 Mb) exhibited no indication of sex linkage (Figure 1 and Table 1). The same was true for the markers covering the full length of chromosome 4a in the goldcrest and in the blue tit: the complete lack of sex-linked patterns suggests that the neo-sex chromosome is absent in these two species (Table 1).

Sex-linked inheritance and linkage analysis in the great reed warbler

Further support for the presence of the neo-sex chromosome came from the analysis of segregating alleles in the great reed warbler pedigree (Table 2): all the 186 genotyped females showed a single allele for the two loci (DIAPH2 and RPS6KA6) in which Z-linked

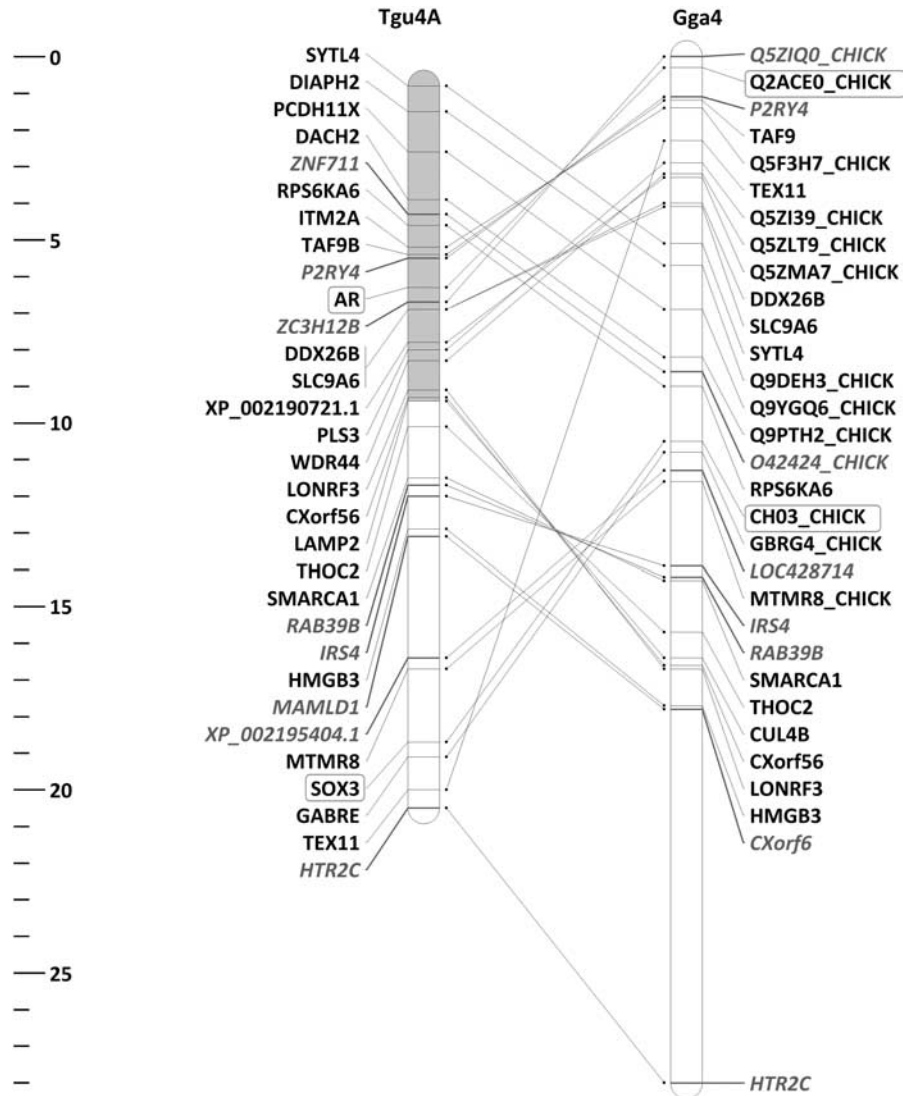


Figure 1 Loci used to evaluate sex linkage and their location on zebra finch chromosome 4a (Tgu4a) and chicken chromosome 4 (Gga4). The area covered by the markers for which sex linkage was observed in the great reed warbler, the common whitethroat and the skylark is highlighted in light grey. Scale bar units in megabases (Mb). Introns are shown in black, and coding sequences in grey. Loci implicated in sex determination are highlighted (rectangles).

indels were targeted, whereas males ($n=187$) were either homozygous or heterozygous (in accordance with the presence of two Z-linked copies). Moreover, the female offspring showed discernible Z-chromosome inheritance patterns for the two loci located within the sex-linked area in all cases where the genotypes of the parents allowed such confirmation (the inheritance pattern of two families is exemplified in Table 2). In contrast, for the three loci (THOC2, SMARCA1 and GABRE) located outside the sex-linked area, heterozygous genotypes were found among both males and females with no clear pattern distinguishing the two sexes, and the expected autosomal inheritance pattern was observed (Table 2).

The two-point recombination analysis, used to assess the rate of recombination between sex-linked 4a markers and Z-chromosome markers, showed a significantly reduced rate of recombination between RPS6KA6 and several marker mapped to the Z linkage group (the recombination fraction, r_f was 0.19 to VLDLR9, 0.17 to BRM12, 0.19 to BRM15, 0.06 to CHD1Z20, 0.10 to 304A, 0.17 to 313AI and 0.13 to 306A; range of LOD: 3.60–8.77). As VLDLR9, BRM12, BRM15 and CHD1Z20 are intron markers of known

Z-linked genes in chicken (Hansson *et al.*, 2005), the tight linkage between these loci and RPS6KA6 provides strong support for the association of our sex-linked 4a marker to the Z chromosome. The other sex-linked 4a marker (DIAPH2) that we genotyped was significantly linked to G61 ($r_f=0.06$; LOD=11.0) and showed a tendency to linkage to marker 092A ($r_f=0.26$; LOD=1.9).

There was no support for linkage between any sex-linked marker (including RPS6KA6 and DIAPH2) and autosomal markers on chromosomes 4 and 4a (including THOC2, SMARCA1 and GABRE) (LOD ≈ 0 in all cases). Furthermore, the autosomal 4a markers (THOC2, SMARCA1 and GABRE) were not significantly linked to loci located on chromosome 4 (Ase61, Ase15, Aar3 and 292G). Finally, the two-point recombination analysis supported linkage between THOC2 and SMARCA1 ($r_f=0.22$; LOD=5.24), but not between GABRE and these two loci ($r_f=0.37$ –0.48; LOD ≤ 0.22 ; most likely due to the isolated location of GABRE at the telomeric end of chromosome 4a (Figure 1 and Supplementary Table S1), and thus high expected recombination rate to the other loci on the linkage group (for example, Stapley *et al.*, 2008).

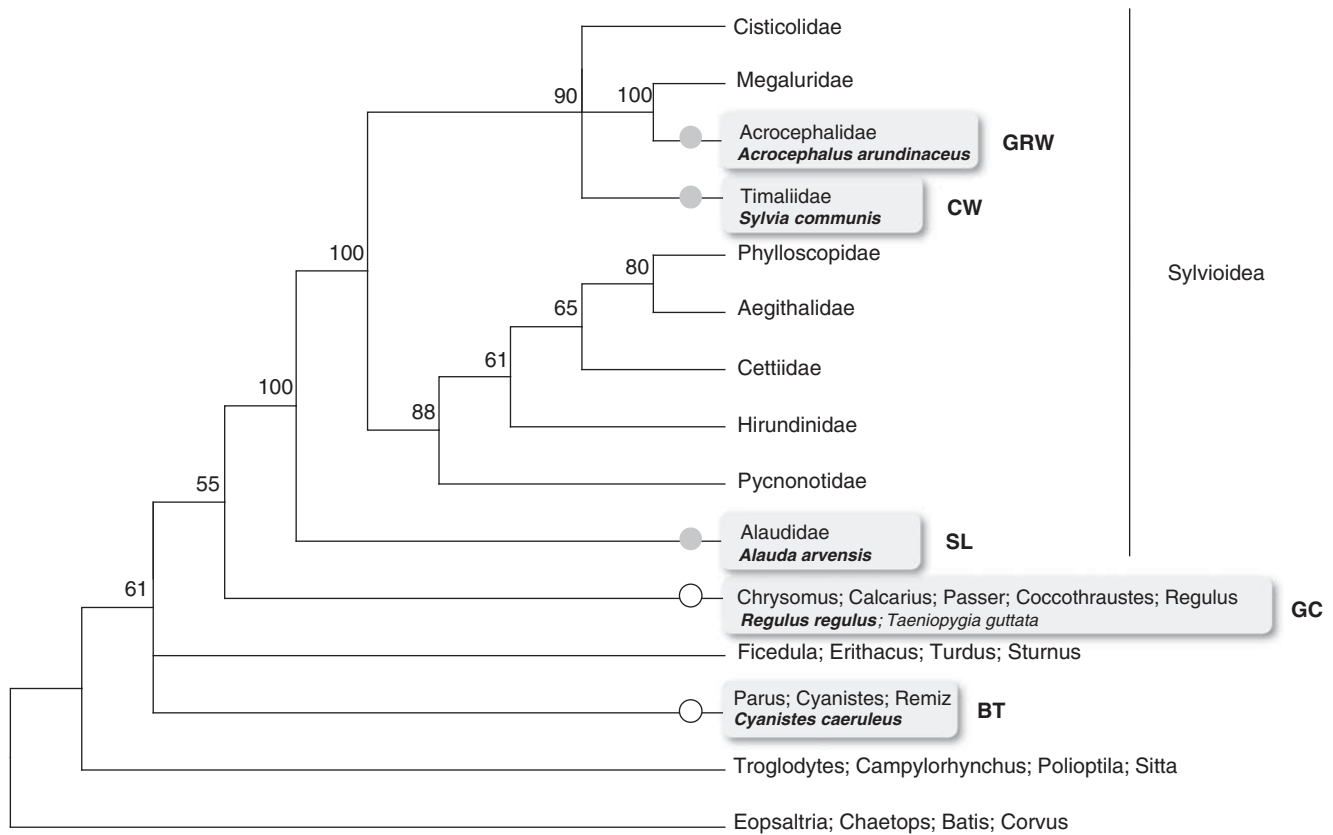


Figure 2 Phylogenetic relationships between passerine lineages based on myoglobin intron II and cytochrome *b* sequences from a total of 84 species (cf. Alström *et al.*, 2006; Supplementary Table S3). Collapsed nodes are shown and numbers are posterior probabilities (for model details, see Materials and Methods). Species included in this study are indicated in bold and common name initials are placed to the right of each respective branch: great reed warbler (GRW), common whitethroat (CW), skylark (SL), goldcrest (GC) and blue tit (BT). Grey circles (in full) highlight branches in which sex linkage of chromosome 4a markers was observed; white circles indicate branches in which representative species showed no sex linkage.

Table 2 Allele screening results for the five selected loci in two great reed warbler families

	Sex	DIAPH2 1.6 Mb	RPS6KA6 4.7 Mb	THOC2 10.2 Mb	SMARCA1 11.6 Mb	GABRE 19.2 Mb					
(a) 1988											
Father	♂	143	159	224	224	212	217	203	207	125	125
Mother	♀	—	159	—	230	217	217	203	207	125	249
Offspring											
	♂	159	159	224	230	217	217	207	207	125	125
	♀	—	143	—	224	212	217	203	207	125	249
	♀	—	143	—	224	217	217	203	207	125	125
	♀	—	159	—	224	217	217	203	203	125	125
	♀	—	143	—	224	217	217	203	207	125	125
(b) 1994											
Father	♂	143	143	224	230	217	217	203	203	125	249
Mother	♀	—	159	—	224	217	219	203	203	125	249
Offspring											
	♂	143	159	224	224	217	219	203	203	125	249
	♂	143	159	224	224	217	217	203	203	249	249
	♀	—	143	—	230	217	217	203	203	125	249
	♀	—	143	—	230	217	219	203	203	249	249

Number, brood year and sex of the offspring are indicated. Position (in Mb) on zebra finch chromosome 4a is indicated under each locus. Female offspring for which allele inheritance patterns indicate sex linkage of DIAPH2 and RPS6KA6 are indicated in bold.

The most parsimonious order of loci on linkage group Z was identical to the order of the published great reed warblers linkage map (Åkesson *et al.*, 2007), with the inclusion of RPS6KA6 between Ase50 and 304A, and DIAPH2 between 092A and G61 (Figure 3). This order of loci suggests a fusion event between the distal end of the ancestral Z chromosome and the distal end of the first part of 4a (the neo-sex chromosome), leading to a new enlarged sex chromosome in great reed warblers with a total size of 156.1 cM (Figure 3). The linkage group of the autosomal part of chromosome 4a, including markers THOC2, SMARCA1 and GABRE, was spanning 91.6 cM (Figure 3).

Neo-sex chromosome age estimation

A large part of chromosome 4a seems to be affected by the transition into a sex chromosome and the extension of the area is apparently the same in all species for which the presence of this neo-sex chromosome was detected (Table 1). The most parsimonious interpretation, according to our observations and the proposed phylogenetic relations within Passerida (Alström *et al.*, 2006), is that the neo-sex chromosome should have arisen at the base of Sylvioidea (Figure 2). According to our dating estimates, this would place the origin of the neo-sex chromosome at 42.2 MYA (47.4–37.6 MYA, 95% highest posterior density).

DISCUSSION

In this study, we report evidence of a neo-sex chromosome in passerines. On the basis of the previous evidence of sex linkage of

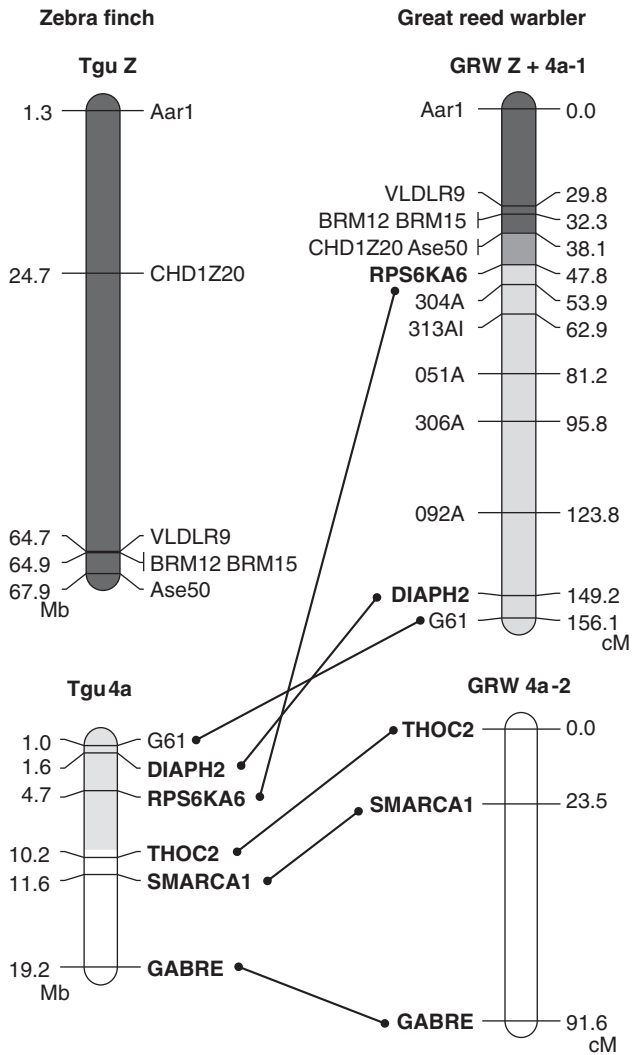


Figure 3 A best-order linkage map of the great reed warbler neo-sex chromosome. Markers included in the analysis are shown in the left panel of chromosomes and their position on zebra finch chromosomes Z and 4a is indicated in megabases (Mb). Z-chromosome markers are highlighted in dark grey and chromosome 4a loci analysed here are shown in bold (the sex-linked area suggested by our marker analysis is highlighted in light grey). The most parsimonious maps for independent linkage groups Z+4a-1 and 4a-2 are indicated for the great reed warbler. Cumulative genetic distances are given in centiMorgans (cM).

an autosomal marker (Dawson *et al.*, 2007) and sex-biased expression (S Naurin *et al.*, unpublished), we targeted markers located on zebra finch autosome 4a as candidates taking part in a newly established association to a sex chromosome. Our evaluation of 31 orthologues of markers located on chromosome 4a revealed that a large area of this chromosome is sex-linked in the great reed warbler, the common whitethroat and the skylark. The linkage patterns are consistent in all Sylvioidea passerines analysed here and the extent of the sex-linked region of chromosome 4a is apparently common to all species. None of the markers was shown to be sex-linked in the goldcrest and the blue tit, and the chromosome is autosomal in the zebra finch (Stapley *et al.*, 2008), thus suggesting that the neo-sex chromosome might have arisen at the base of the Sylvioidea branch of the avian phylogeny, at approximately 47.4–37.6 MYA, making it substantially

younger than the approximately 150 MYA ancestral avian Z and W chromosomes (Nam and Ellegren, 2008).

In this study, we have not used cytogenetic tools to visualize the physical association of the sex-linked part of chromosome 4a to the sex chromosomes. Nevertheless, apart from unequivocally identifying the neo-sex chromosome, our marker-based approach provides strong support for such association. The linkage analysis performed in the great reed warbler pedigree corroborated the sex chromosome location of the sex-linked 4a markers (RPS6KA6 and DIAPH2). In particular, the highly significant linkage between RPS6KA6 and several genes known to be Z linked in chicken (VLDLR9, BRM12, BRM15 and CHD1Z20; Hansson *et al.*, 2005) provides strong support for the association of the sex-linked part of chromosome 4a and the Z chromosome. On the basis of the inverted position of the 4a markers on the linkage group, we propose that the new enlarged sex chromosome was formed by a fusion between the distal end of the ancestral Z chromosome and the distal end of the first part of 4a (the neo-sex chromosome) (see Figure 3).

The sequence patterns observed point towards an association of the sex-linked loci to both Z and W chromosomes in the three Sylvioidea species. The linkage to both ancestral sex chromosomes is an unusual mechanism in neo-sex chromosome formation, with most fusion events occurring in association to only one member of the pair, and resulting in the constitution of additional independent (neo-) sex chromosomes (Bachtrog, 2005; Zhou *et al.*, 2008; Howell *et al.*, 2009). In birds, sex-linked loci have been reported in association to the Z chromosome (Ellegren, 2000) and very rarely exclusively to the W chromosome (Küpper *et al.*, 2007). Besides our own study of chromosome 4a in Sylvioidea, linkage of autosomal markers (mapped to chicken autosomes 3 and 5) to both Z and W chromosomes has been indicated in a recent study of Raso larks (*Alauda razae*; Brooke *et al.*, 2010).

Interestingly, Tgu4a, a microchromosome in the zebra finch genome, results from a number of fusion and fission events involving the ancestral avian chromosome 4 (Griffin *et al.*, 2007). No other chromosome in the avian genome has this pattern of repeated rearrangements (Völker *et al.*, 2010); thus, the gene content of chromosome 4a might provide some insight regarding the presence of the neo-sex chromosome in the Sylvioidea lineage. It has been postulated that genomic rearrangements underlying neo-sex chromosome formation may offer selective advantages in one of the sexes, and thus result in sexual antagonisms, if they physically connect genes with sex-specific functions to sex determination genes harboured on the sex chromosomes (Rice, 1987). Support for the hypothesis of gene content as a driving force for the establishment of sex chromosome/autosome associations comes, for instance, from studies of stickleback sex chromosomes (Ross *et al.*, 2009). In two different stickleback species (*Gasterosteus wheatlandi* and *Pungitius pungitius*), independent chromosomal fusion events have resulted in linkage of the sex determination locus and linkage group 12. This has been interpreted as evidence that certain chromosomes, harbouring sexually antagonistic genes, might be predisposed to becoming a sex chromosome (Ross *et al.*, 2009). In addition, the question of sexual antagonism has been extensively addressed in the perspective of how selection maintains genes with differential benefit to males and females in sex linkage, and how this process contributes to sex chromosome evolution. Among other examples, the recent acquisition of 'male beneficial' genes by the mammalian X (Zhang *et al.*, 2010), the abundance of testis-specific genes on the silkworm Z (Arunkumar *et al.*, 2009), the close linkage of sexually selected colour genes to sex-determination loci in cichlids (Lande *et al.*, 2001) and the presence of loci coding for male courtship

display traits, involved in behavioural isolation, in the stickleback neo-sex chromosome (Kitano *et al.*, 2009), all support sexually antagonistic gene content as an important factor in the evolutionary history of both ancestral and more recently derived sex chromosome systems.

In birds, chromosome 4a contains the *SOX3* gene, considered as a possible ancestral precursor of the male determination gene *SRY*. In mammals, this gene is located on the X chromosome and is involved in both gonad and brain development (Graves, 1998). According to our data, however, this gene is located outside the area of chromosome 4a involved in the neo-sex chromosome formation in Sylvioidea, as evidenced by the absence of sex linkage for *SOX3* (Figure 1 and Table 1). This result seems to argue against the hypothesis of a sexual antagonistic basis driving the observed chromosomal rearrangements. However, *SOX3* is not the only gene that could be influential in this transition. Interestingly, another gene that plays an important role in sexual commitment is also present on chromosome 4a. The *androgen receptor (AR)* gene is located at around 6.4 Mb on Tgu4a and our data show that it is sex-linked in Sylvioidea (Figure 1 and Table 1). This gene has been implicated in sex differentiation in different animal groups (de Waal *et al.*, 2008; Wang *et al.*, 2009) and is particularly involved in male sexual development. An appealing feature of the linkage of *AR* with a sex chromosome in birds is the possibility of an association with *DMRT1*. Although no final consensus has been reached regarding sex determination in birds, it has recently been demonstrated that the expression level of the Z-linked gene *DMRT1* is essential for male sex determination (Smith *et al.*, 2009). In mammals, normal activation of the androgen receptor was shown to require the interaction with *DMRT1* (Kim *et al.*, 2007), and in the medaka (*Oryzias latipes*), androgen receptor binding sites have been identified in the promoter of the master male-determination gene *dmrt1bY* (Herpin *et al.*, 2010). The functional significance of this association will demand further investigation.

The report of a neo-sex chromosome in Sylvioidea constitutes a rare account of an interchromosomal rearrangement involving sex chromosomes in birds, and represents an exciting starting point for studying the role of sexually antagonistic selection on genome evolution in this lineage. The present results open new possibilities for investigating the evolutionary trajectories of newly sex-linked genes in a previously unexplored vertebrate context: a female heterogametic system.

DATA ARCHIVING

Sequence data have been submitted to GenBank accession numbers: HQ415821–HQ415968 (Supplementary Table S5).

CONFLICT OF INTEREST

The authors declare no conflict of interest.

ACKNOWLEDGEMENTS

We thank Keith Barker (University of Minnesota) for making *RAG-1/RAG-2* data available for molecular ageing. Financial support for this study was provided by the Swedish Research Council (SB, DH, BH), the Wenner-Gren Foundation and Helge Ax:son Johnsons Stiftelse (IP).

- Arun Kumar KP, Mita K, Nagaraju J (2009). The silkworm Z chromosome is enriched in testis-specific genes. *Genetics* **182**: 493–501.
- Bachtrog D (2005). Sex chromosome evolution: molecular aspects of Y-chromosome degeneration in *Drosophila*. *Genome Res* **15**: 1393–1401.
- Barker FK, Cibois A, Schikler P, Feinstein J, Cracraft J (2004). Phylogeny and diversification of the largest avian radiation. *Proc Natl Acad Sci USA* **101**: 11040–11045.
- Bensch S, Hasselquist D, Nielsen B, Hansson B (1998). Higher fitness for philopatry than for immigrant males in a semi-isolated population of great reed warblers. *Evolution* **52**: 877–883.
- Brooke MDL, Welbergen JA, Mainwaring MC, van der Velde M, Harts AM, Komdeur J *et al.* (2010). Widespread translocation from autosomes to sex chromosomes preserves genetic variability in an endangered lark. *J Mol Evol* **70**: 242–246.
- Dawson DA, Akesson M, Burke T, Pemberton JM, Slate J, Hansson B (2007). Gene order and recombination rate in homologous chromosome regions of the chicken and a passerine bird. *Mol Biol Evol* **24**: 1537–1552.
- de Waal PP, Wang DS, Nijenhuis WA, Schulz RW, Bogerd J (2008). Functional characterization and expression analysis of the androgen receptor in zebrafish (*Danio rerio*) testis. *Reproduction* **136**: 225–234.
- Drummond AJ, Ashton B, Buxton S, Cheung M, Cooper A, Heled J *et al.* (2010). Geneious v5.1. Available from <http://www.geneious.com>.
- Drummond AJ, Ho SY, Phillips MJ, Rambaut A (2006). Relaxed phylogenetics and dating with confidence. *PLoS Biol* **4**: e88.
- Drummond AJ, Rambaut A (2007). BEAST: Bayesian evolutionary analysis by sampling trees. *BMC Evol Biol* **7**: 214.
- Ellegren H (2000). Evolution of the avian sex chromosomes and their role in sex determination. *Trends Ecol Evol* **15**: 188–192.
- Flores SV, Evans AL, McAllister BF (2008). Independent origins of new sex-linked chromosomes in the melanica and robusta species groups of *Drosophila*. *BMC Evol Biol* **8**: 33.
- Graves JAM (1998). Interactions between *SRY* and *SOX* genes in mammalian sex determination. *BioEssays* **20**: 264–269.
- Green P, Falls K, Crooks (1996). Documentation to CRI-MAP version 2.4. Available from <http://linkage.rockefeller.edu/soft/crimap/>.
- Griffin DK, Robertson LB, Tempest HG, Skinner BM (2007). The evolution of the avian genome as revealed by comparative molecular cytogenetics. *Cytogenet Genome Res* **117**: 64–77.
- Griffiths R, Double MC, Orr K, Dawson RJ (1998). A DNA test to sex most birds. *Mol Ecol* **7**: 1071–1075.
- Handley LJ, Cepitis H, Ellegren H (2004). Evolutionary strata on the chicken Z chromosome: implications for sex chromosome evolution. *Genetics* **167**: 367–376.
- Hansson B, Akesson M, Slate J, Pemberton JM (2005). Linkage mapping reveals sex-dimorphic map distances in a passerine bird. *Proc R Soc Ser B* **272**: 2289–2298.
- Hasselquist D (1998). Polygyny in the great reed warbler: a long term study of factors contributing to male fitness. *Ecology* **79**: 2376–2390.
- Herpin A, Braasch I, Kraussling M, Schmidt C, Thoma EC, Nakamura S *et al.* (2010). Transcriptional rewiring of the sex determining *dmrt1* gene duplicate by transposable elements. *PLoS Genet* **6**: e1000844.
- Howell EC, Armstrong SJ, Filatov DA (2009). Evolution of neo-sex chromosomes in *Silene diclinis*. *Genetics* **182**: 1109–1115.
- Huelsenbeck JP, Ronquist F (2001). MRBAYES: Bayesian inference of phylogenetic trees. *Bioinformatics* **17**: 754–755.
- Itoh Y, Arnold AP (2005). Chromosomal polymorphism and comparative painting analysis in the zebra finch. *Chromosome Res* **13**: 47–56.
- Kim S, Bardwell VJ, Zarkower D (2007). Cell type-autonomous and non-autonomous requirements for *Dmrt1* in postnatal testis differentiation. *Dev Biol* **307**: 314–327.
- Kitano J, Ross JA, Mori S, Kume M, Jones FC, Chan YF *et al.* (2009). A role for a neo-sex chromosome in stickleback speciation. *Nature* **461**: 1079–1083.
- Küpper C, Horsburgh GJ, Dawson DA, French-Constant R, Székely T, Burk T (2007). Characterization of 36 polymorphic microsatellite loci in the Kentish plover *Charadrius alexandrinus* including two sex-linked loci and their amplification in four other *Charadrius* species. *Mol Ecol Notes* **7**: 35–39.
- Lande R, Seehausen O, van Alphen JJ (2001). Mechanisms of rapid sympatric speciation by sex reversal and sexual selection in cichlid fish. *Genetics* **112**: 435–443.
- Nam K, Ellegren H (2008). The chicken (*Gallus gallus*) Z chromosome contains at least three nonlinear evolutionary strata. *Genetics* **180**: 1131–1136.
- Nanda I, Schlegelmilch K, Haaf T, Scharf M, Schmid M (2008). Synteny conservation of the Z chromosome in 14 avian species (11 families) supports a role for Z dosage in avian sex determination. *Cytogenet Genome Res* **122**: 150–156.
- Nicolas M, Marais G, Hykelova V, Janousek B, Laporte V, Vyskot B *et al.* (2005). A gradual process of recombination restriction in the evolutionary history of the sex chromosomes in dioecious plants. *PLoS Biol* **3**: e4.
- Rambaut ADA (2007). Tracer v1.4. Available from <http://beast.bio.ed.ac.uk>.
- Rice WR (1987). The accumulation of sexually antagonistic genes as a selective agent promoting the evolution of reduced recombination between primitive sex chromosomes. *Evolution* **41**: 911–914.
- Ronquist F, Huelsenbeck JP (2003). MrBayes 3: Bayesian phylogenetic inference under mixed models. *Bioinformatics* **19**: 1572–1574.
- Ross JA, Urton JR, Boland J, Shapiro MD, Peichel CL (2009). Turnover of sex chromosomes in the stickleback fishes (Gasterosteidae). *PLoS Genet* **5**: e1000391.
- Rozen S, Skaletsky H (2000). Primer3 on the WWW for general users and for biologist programmers. *Methods Mol Biol* **132**: 365–386.

Åkesson M, Hansson B, Hasselquist D, Bensch S (2007). Linkage mapping of AFLP markers in a wild population of great reed warblers: importance of heterozygosity and number of genotyped individuals. *Mol Ecol* **16**: 2189–2202.

Alström P, Ericson PG, Olsson U, Sundberg P (2006). Phylogeny and classification of the avian superfamily Sylvioidea. *Mol Phylogenet Evol* **38**: 381–397.

- Smith CA, Roeszler KN, Ohnesorg T, Cummins DM, Farlie PG, Doran TJ *et al.* (2009). The avian Z-linked gene DMRT1 is required for male sex determination in the chicken. *Nature* **461**: 267–271.
- Stapley J, Birkhead TR, Burke T, Slate J (2008). A linkage map of the zebra finch *Taeniopygia guttata* provides new insights into avian genome evolution. *Genetics* **179**: 651–667.
- Völker M, Backström N, Skinner BM, Langley EJ, Bunzey SK, Ellegren H *et al.* (2010). Copy number variation, chromosome rearrangement, and their association with recombination during avian evolution. *Genome Res* **20**: 503–511.
- Voorrips RE (2002). MapChart: software for the graphical presentation of linkage maps and QTLs. *J Hered* **93**: 77–78.
- Wang RS, Yeh S, Tzeng CR, Chang C (2009). Androgen receptor roles in spermatogenesis and fertility: lessons from testicular cell-specific androgen receptor knockout mice. *Endocr Rev* **30**: 119–132.
- Yan C, K LW (1993). A plate tectonic reconstruction of the southwest Pacific, 0–100 Ma. *Proc Ocean Drill Prog Sci Res* **130**: 697–709.
- Zhang YE, Vibranovski MD, Landback P, Marais GA, Long M (2010). Chromosomal redistribution of male-biased genes in mammalian evolution with two bursts of gene gain on the X chromosome. *PLoS Biol* **8**: e1000494.
- Zhou Q, Wang J, Huang L, Nie W, Liu Y, Zhao X *et al.* (2008). Neo-sex chromosomes in the black muntjac recapitulate incipient evolution of mammalian sex chromosomes. *Genome Biol* **9**: R98.

Supplementary Information accompanies the paper on Heredity website (<http://www.nature.com/hdy>)