

# Hemodialysis Removes Uremic Toxins That Alter the Biological Actions of Endothelial Cells

Kalliopi Zafeiropoulou<sup>1</sup>, Theodora Biti<sup>2,§</sup>, Apostolos Polykratis<sup>1,§</sup>, Stella Karabina<sup>1</sup>, John Vlachojannis<sup>2,¶</sup>, Panagiotis Katsoris<sup>1\*,¶</sup>

**1** Department of Biology, University of Patras, Patras, Achaia, Greece, **2** Department of Internal Medicine-Nephrology, University Hospital of Patras, Patras, Achaia, Greece

## Abstract

Chronic kidney disease is linked to systemic inflammation and to an increased risk of ischemic heart disease and atherosclerosis. Endothelial dysfunction associates with hypertension and vascular disease in the presence of chronic kidney disease but the mechanisms that regulate the activation of the endothelium at the early stages of the disease, before systemic inflammation is established remain obscure. In the present study we investigated the effect of serum derived from patients with chronic kidney disease either before or after hemodialysis on the activation of human endothelial cells *in vitro*, as an attempt to define the overall effect of uremic toxins at the early stages of endothelial dysfunction. Our results argue that uremic toxins alter the biological actions of endothelial cells and the remodelling of the extracellular matrix before signs of systemic inflammatory responses are observed. This study further elucidates the early events of endothelial dysfunction during toxic uremia conditions allowing more complete understanding of the molecular events as well as their sequence during progressive renal failure.

**Citation:** Zafeiropoulou K, Biti T, Polykratis A, Karabina S, Vlachojannis J, et al. (2012) Hemodialysis Removes Uremic Toxins That Alter the Biological Actions of Endothelial Cells. PLoS ONE 7(2): e30975. doi:10.1371/journal.pone.0030975

**Editor:** Timothy W. Secomb, University of Arizona, United States of America

**Received:** August 1, 2011; **Accepted:** December 29, 2011; **Published:** February 22, 2012

**Copyright:** © 2012 Zafeiropoulou et al. This is an open-access article distributed under the terms of the Creative Commons Attribution License, which permits unrestricted use, distribution, and reproduction in any medium, provided the original author and source are credited.

**Funding:** The authors have no support or funding to report.

**Competing Interests:** The authors have declared that no competing interests exist.

\* E-mail: katsopan@upatras.gr

§ These authors contributed equally to this work.

¶ These authors also contributed equally to this work.

## Introduction

Chronic kidney disease (CKD) is due to a progressive loss of renal function that may lead to complications such as cardiovascular disease or pericarditis. To fully investigate the underlying cause of kidney damage, various forms of medical imaging, blood tests or renal biopsy are employed to find out if there is a reversible cause for the kidney malfunction. Established CKD or chronic renal failure (CRF) are terms that describe the late stage of kidney damage, when the disease is considered irreversible. Current therapy strategies aim the delay of the clinical manifestations to the final stages of the disease. Generally, agents targeting the functional control of the endothelium, such as angiotensin converting enzyme inhibitors (ACEIs) or angiotensin-II receptor antagonists (ARBs) are used, as they have been found to delay the clinical manifestations of the CKD [1,2,3,4]. Nevertheless, even under treatment with ACEIs or ARBs, patients progressively lose proper renal function. For these reasons understanding the primary responses of the endothelium to each stages of the kidney disease is of major importance for the design of efficient therapeutic strategies.

The endothelium is the major site of control of vascular functions [5]. Under physiological conditions the vascular endothelium regulates processes that include vascular tone, vascular permeability to nutrients, macromolecules and leukocytes recruitment (and thus inflammation), platelet adhesion and aggregation, activation of the coagulation cascade and fibrinolysis [6,7,8,9,10,11]. Endothelial dysfunction reflects the combination of altered endothelial properties resulting to improper

preservation of organ function. Endothelial dysfunction might be characterized by altered basement membrane synthesis, increased vascular tone and permeability -which contributes to increased blood pressure and atherogenesis- and loss of antithrombotic and profibrinolytic properties. Such alterations do not necessarily occur simultaneously and may differ according to the nature of the injury and the intrinsic site-specific properties of endothelium.

CKD leads to altered properties and responses of the endothelium [12,13,14]. However, the mechanisms by which increased uremia might influence endothelial cells, and especially the early responses of endothelial cells to the stimuli present in the serum of patients with CKD, are still not well understood. Systemic exposure of the vasculature to uremic toxins may lead to endothelial activation [15] and to features associated with systemic inflammation like hypertension and atherosclerosis. Hemodialysis (HD) or nephrectomy are generally used as approaches for the treatment of the short-term effects of renal disease [16], nevertheless patients under long term HD treatment do not have reduced risk of vascular disease [17,18,19,20].

The present study was designed to investigate the short-term *in vitro* effect of serum from patients with CKD on endothelial cells and the relative effect of HD on endothelial cell activation and function. We focused on the early responses of the endothelial cells to the uremic toxins, before the inflammatory activation of the endothelial cells (expression of adhesion molecules, secretion of chemokines) is established. For this purpose sera from patients either before or after the HD procedure were collected and their relative effect on the activation of human umbilical vein

endothelial cells was investigated. This experimental approach enabled us to clearly use the best internal controls available since the sera from the same patients were used. Our results clearly demonstrate that the initial response of endothelial cells to uremic toxins involves a rearrangement of the local micro-environment and extracellular matrix, a response that was up to date not appreciated.

## Materials and Methods

### Serum samples from CRF patients

Ten adult (men) patients on chronic maintenance HD, middle-aged  $45 \pm 5$  years old, who were clinically stable and free of active infection, autoimmune diseases or other traditional factors implicated to endothelial dysfunction (diabetes mellitus, hypertension, hyperlipidemia, smoking) and had no signs or symptoms of cardiovascular disease, participated in the study. None of the patients received antihypertensive drugs, immunosuppressive treatment, lipid-lowering agents, non-steroidal anti-inflammatory drugs or antioxidants such as vitamin E, C or allopurinol in the preceding 4 weeks. End stage kidney disease was attributed to glomerulonephritis in 3 cases, interstitial nephritis in 2 and polycystic kidney disease in 3 and was undetermined in 2 cases. The patients were routinely haemodialyzed three times weekly for 4.0 h with DCEA polysulfone membranes - surface  $1.7 \text{ mm}^2$ , bicarbonate dialysate and low molecular weight heparin-enoxaparin as anticoagulation. The dialysate was endotoxin-free (Coatest Kabi Vitrum). Dialysis prescription was guided by the goal of achieving a value of  $Kt/V \geq 1.3$ . They were on erythropoietin therapy and the mean dosage was 90.5 (range 30.2–162) U/kg body weight/week. Body mass index (BMI) was calculated by dividing the weight in kilograms by the square of the height in meters.

For this study, we obtained ethics approval from the ethics committee of University of Patras.

### Endothelial cell culture

Primary human umbilical vein endothelial cells (HUVEC) were isolated from umbilical cord vein by collagenase digestion as previously described [21] and used at passages 2–4. The cells were grown as monolayers in M199 medium supplemented with 15% fetal bovine serum (FBS), 150  $\mu\text{g}/\text{ml}$  endothelial cell growth supplement, 5 U/ml heparin sodium, 100 U/ml penicillin-streptomycin and 50  $\mu\text{g}/\text{ml}$  gentamycin. Cultures were maintained at  $37^\circ\text{C}$ , 5%  $\text{CO}_2$  and 100% humidity.

### Migration assay

Migration assays were performed as previously described [22] in 24-well microchemotaxis chambers (Costar, Avon, France), using uncoated polycarbonate membranes with 8  $\mu\text{m}$  pores. Briefly, HUVEC were harvested and resuspended at a concentration of  $10^5$  cells/0.1 ml in medium containing 0.25% BSA. The bottom chamber was filled with 0.6 ml of medium containing 0.25% BSA and pre- or post-HD serum at dilutions ranging from 5% to 20% v/v. The upper chamber was loaded with  $10^5$  cells and incubated for 4 h at  $37^\circ\text{C}$ . After completion of the incubation, the filters were fixed with saline-buffered formalin and stained with 0.33% toluidine blue solution. The cells that migrated through the filter were quantified by counting the entire area of each filter, using a grid and an Optech microscope at a  $20\times$  magnification.

### Cell proliferation assay

Cell number was assessed using the 3-[4,5-dimethylthiazol-2-yl]-2,5-dimethyltetrazolium bromide (MTT) assay [23]. HUVEC

were seeded at  $5 \times 10^4$  cells/well in 24-well tissue culture plates in the corresponding culture medium. Cells were incubated in the absence of serum for 4 h. Pre- or post-HD serum was added to the medium of the cells at dilutions ranging from 5% to 20% v/v and the number of cells was measured after 48 h. MTT stock (5 mg/ml in PBS) at a volume equal to 1/10 of the medium was added and plates were incubated at  $37^\circ\text{C}$  for 2 h. The medium was then removed, the cells were washed with PBS pH 7.4 and 100 ml acidified isopropanol (0.33 ml HCl in 100 ml isopropanol) was added to all wells and agitated thoroughly to solubilize the dark blue formazan crystals. The solution was transferred to a 96-well plate and immediately read on a microplate reader (Biorad) at a wavelength of 490 nm.

Cell number was also determined by crystal violet assay: Adherent cells were fixed with methanol and stained with 0.5% crystal violet in 20% methanol for 20 min. After gentle rinsing with water, the retained dye was extracted with 30% acetic acid and the absorbance was measured at 590 nm.

### Annexin-V Binding Staining

The Annexin V-FITC Detection Kit I (PharMingen, San Diego, CA) was used according to the manufacturer's instructions. Cells were serum-starved for 4 h and pre- or post-HD serum was added to the medium of the cells at 20% v/v dilution. Cells were collected after 12 or 24 h incubation. Samples were analyzed in a FACScan flow cytometer (Becton Dickinson). For each sample, 10,000 ungated events were acquired.

### *In vitro* endothelial cell wound healing assay

HUVEC were grown in 6-well plates as confluent monolayers. The monolayers were incubated in the absence of serum for 4 h and wounded in a line across the well with a 200- $\mu\text{l}$  standard pipette tip. Cells were washed twice with serum-free media and incubated with 20% v/v pre- or post-HD serum for 24 h. The area of the initial wound was photographed using a charge-coupled device camera connected to an inverted microscope (Axiovert 35; Zeiss, Thornwood, NY). The wound healing effect was calculated compared with the area of the initial wound.

### Gelatin Zymography

The activity of MMP-2 and MMP-9 was examined by zymography as previously described [24]. Endothelial cells were cultured in 6-well plates as confluent monolayer. HUVEC were serum-starved for 4 h and then incubated with culture medium supplemented with 20% pre- or post-HD serum. 4 h later the medium was replaced by minimal medium. 8 or 20 h later the media were collected, centrifuged, and aliquots of the supernatants were loaded with a non-reducing sample buffer onto a 10% sodium dodecyl sulfate (SDS)-polyacrylamide gel containing 1 mg/mL gelatin and electrophoresed. Gels were washed twice with 2.5% Triton X-100 solution for 30 min and once with 10 mM Tris-HCl buffer (pH 8.0) for 30 min. Gels were further incubated in 50 mM Tris-HCl (pH 8.0) containing 0.5 mM  $\text{CaCl}_2$  and 0.1 mM  $\text{ZnCl}_2$  at  $37^\circ\text{C}$  for 24 h. The gels were stained with 1% Coomassie Blue R-250 in 10% methanol and 5% acetic acid and subsequently destained with 10% methanol and 5% acetic acid. The relative amounts of MMP-9 and MMP-2 were quantified by NIH Image Analysis software and normalized to the total number of cells of each well (using Crystal violet method).

### Immunoblot analysis

Endothelial cells were cultured in 6-well plates as confluent monolayer. HUVEC were serum-starved for 4 h and then

incubated with culture medium supplemented with 20% pre- or post- HD serum. 4 h later the medium was replaced by minimal medium. 8 or 20 h later the media were collected, centrifuged, and aliquots of the supernatants were analyzed by SDS-PAGE and proteins were blotted onto PVDF membranes (Millipore, Bedford, MA). Blocking was performed in a 5% fat-free dry milk in 0.2% Tween-20 in PBS and membranes were further incubated with primary antibodies for 1 h (1:2000 dilution in TBS containing 0.1% Tween 20 (TBS-T) and 1% BSA), washed with 0.1% Tween- 20 in PBS, and then incubated with anti-mouse peroxidase-conjugated secondary antibody (1:2000 in TBS containing 0.1% Tween 20 (TBS-T) and 3% fat free dry milk). Visualization of immunoreactive proteins was performed with enhanced chemiluminescence reagents (ECL kit; Amersham Pharmacia Biotech). The normalization was based on the number of cells of each well that was estimated using Crystal violet method.

### RNA isolation and reverse transcriptase-polymerase chain reaction analysis of MMP-2,-9 and TIMP-1, -2 mRNA

Total RNA was isolated from HUVEC cultured with 20% pre- or post-HD serum for 6, 12 or 24 h using Nucleospin® RNA II (Macherey-Nagel) according to manufacturer's instructions. Reverse transcriptase-PCRs were performed using the Access Reverse Transcriptase-PCR system (Promega). The sequences of the primers used in our studies are the following: GAPDH: 5'-TCT AGA CGG CAG GTC AGG TCC ACC-3' and 5'-CCA CCC ATG GCA AAT TCC ATG GCA- 3', MMP-2: 5'-ACA GTC CGC CAA ATG AAC C- 3' and 5'-CCT GGG CAA CAA ATA TGA G- 3', **MMP-9**: 5'-GCC TTG GAA GAT GAA TGG AA - 3' and 5'- CAT CGT CAT CCA GTT TGG TG- 3', **TIMP-1**: 5'-TGC AGT TTT CCA GCA ATG AG - 3' and 5'-CTG TTG TTG CTG TGG CTG AT - 3', **TIMP-2**: 5'-TTT GAG TTG CTT GCA GGA TG - 3' and 5'-ATT TGA CCC AGA GTG GAA CG -3', **COLLAGEN IV**: 5'-TTT CCA GGG TAG CCA GAT GCT C - 3' and 5'-GGG GTT ACA AGG TGT CAT TGG G - 3', **ELASTIN**: 5'-CCA TAC TTG GCT GCC TTA GC - 3' and 5'-CAC TGG GGT ATC CCA TCA AG - 3'.

### Statistical analysis

Comparison of mean values among groups was done using ANOVA and the unpaired Student t-test. Homogeneity of variance was tested by Levene's test. Each experiment included at least triplicate measurements for each condition tested. All results are expressed as the mean  $\pm$  SD of at least three independent experiments. Values of p less than 0.05 were taken to be significant (\*p<0.05, \*\*p<0.01, \*\*\*p<0.001).

## Results

### Uremic toxins present in the serum of patients with CKD alter endothelial cell properties *in vitro*

Although CKD is positively associated with dysfunction of the endothelium, the effect of the uremic toxins of patients on the immediate responses of endothelial cells is not clearly demonstrated. To study the above mentioned effect, we isolated sera from patients with CKD right before or after HD, an approach that was not followed or appreciated in previous studies. At first we investigated the role of uremic toxins in the sera of our patients on the proliferation of endothelial cells. We incubated HUVEC with three different concentrations of sera. As shown in Figure 1A, incubation of HUVEC with increased concentrations of pre-HD serum resulted in reduced proliferation of endothelial cells compared to the relative concentrations of post-HD serum.

Increased concentrations of serum resulted in increased proliferation in both pre- and post-HD sera, nevertheless in all the concentrations tested in our experiments the effect on proliferation was enhanced in the samples stimulated with post-HD serum. The stimulatory effect of the uremic toxins-free serum (post-HD serum) on the proliferation of HUVEC reached 30% compared to the pre-HD serum, when a concentration of 20% was used in the medium. These results indicate that the differential concentration mainly of uremic toxins present in the serum of patients with CKD before and after HD affects proliferation of primary endothelial cells *in vitro*.

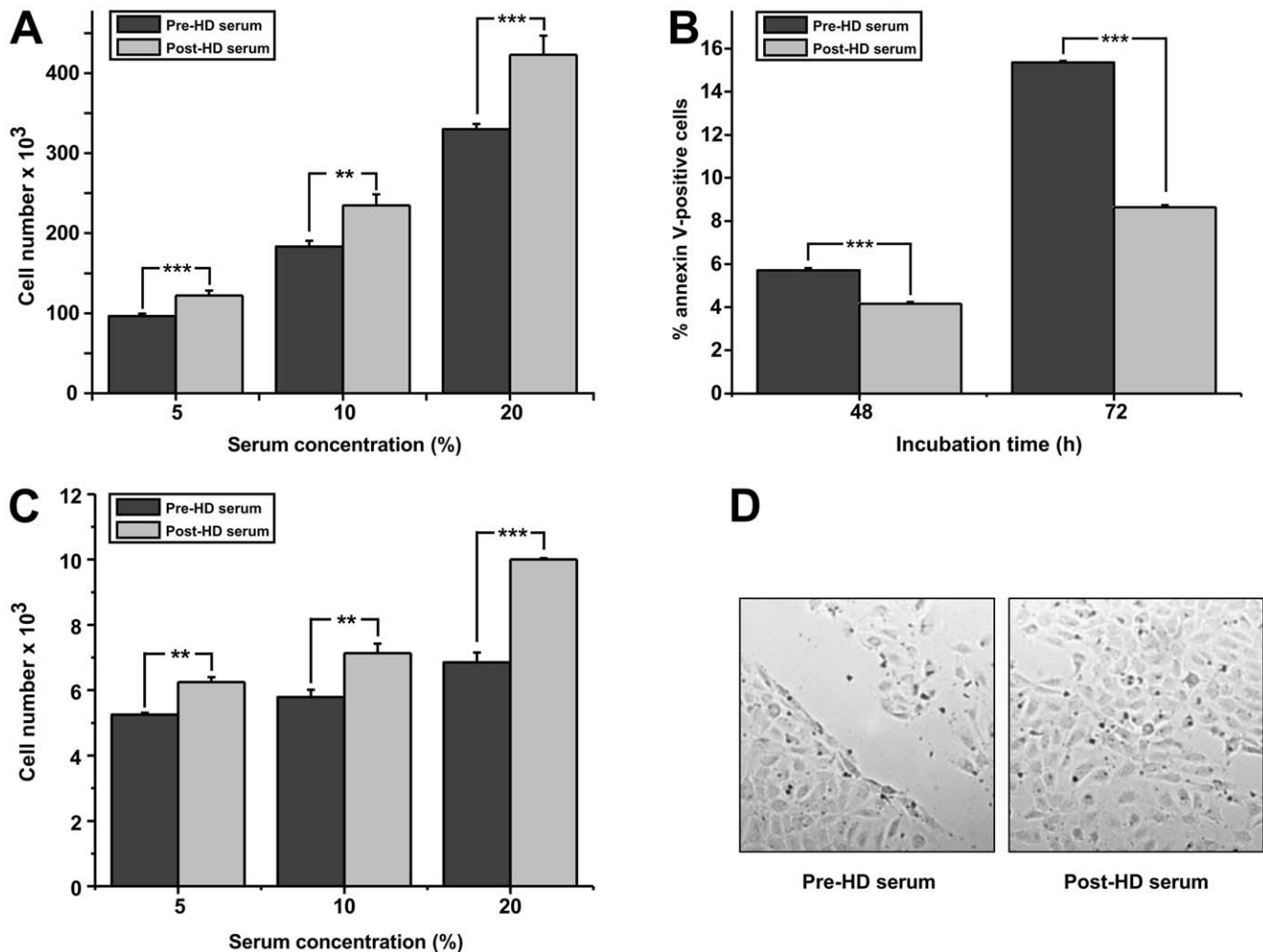
Basal apoptosis can be observed in cultured cells under normal conditions. Furthermore, since post-HD serum is not believed to be completely free of uremic toxins, we investigated the effect of either pre- or post-HD serum on the apoptosis of HUVEC *in vitro*. We used the concentration of 20% of serum in the cultured medium where the effect on HUVEC proliferation was more pronounced. As shown in Figure 1B, incubation of endothelial cells with either pre- or post-HD sera leads to a time dependent increase in the percentage of apoptotic cells. This effect is more pronounced when cells are cultured with pre- HD serum and reaches an 80% increase in the number of apoptotic cells compared to cells cultures with post-HD sera after 72 hours. Nevertheless, the percentage of apoptotic cells in culture even under these conditions cannot be the sole reason for the decreased total number in our proliferation assays (Figure 1A), arguing for a combined effect of uremic-toxins on both the proliferation and cell survival of endothelial cells.

It is known that systemic inflammation affects the migration of endothelial cells, inhibiting the healing processes *in vivo* [25]. To study the effect of uremic toxins on migration, we incubated HUVEC with increasing concentrations of either pre-HD or post-HD serum. As shown in Figure 1C, pre-HD serum has a relatively small positive effect on the migration of endothelial cells in the different concentrations used. On the contrary, when post-HD serum was used, a dose-dependent induction on the migration of endothelial cells was observed that reached almost 70% induction at serum concentration of 20%.

The combination of endothelial cells proliferation/survival and migration *in vivo* might have an impact in wound healing processes. The effect of the concentration of uremic toxins before and after the HD in the healing responses of endothelial cells *in vitro* has not been so far addressed. To investigate this we used the widely used scratch assay. Wound repair was assessed 24 h after incubation with 20% pre- or post-HD serum. As shown in Figure 1D, endothelial wound repair in monolayers exposed to pre-HD serum was significantly lower than in cells exposed to post-HD serum.

### Uremic toxins present in the sera of patients with CKD promote the expression and activity of ECM-degrading proteinases

So far our results indicate that the uremic toxins alter the biological activities of endothelial cells *in vitro*, and are in accordance with previously published data [26,27,28,29,30]. Nevertheless, previous studies have been focused on the response of endothelial cell (*in vitro*) after long term stimulation with inflammatory stimuli or of the endothelium (*in vivo*) under conditions of systemic inflammation. We decided to focus on the early responses of endothelial cells upon stimulation with uremic toxins sera. At first we tested if the serum from the same patients before or after the HD could affect the deposition of extracellular matrix. We stimulated HUVEC with the above-mentioned sera and assessed for the activation of metalloproteinases (MMPs) either at the protein level by zymography on the medium of the



**Figure 1. Effect of pre- or post-HD serum on proliferation, apoptosis, migration and wound healing activities of HUVEC.** (A): HUVEC were incubated in medium supplemented with 5%, 10%, 20% pre- or post-HD serum and 48 h later their number was estimated by crystal violet. (B): HUVEC were incubated in medium supplemented with 20% pre- or post-HD serum and 48 or 72 h later the number of apoptotic cells was measured by FACS. (C): HUVEC were incubated in microchemotaxis chambers in culture medium supplemented with 5%, 10%, 20% pre- or post-HD serum and 4 h later the number of cells that migrated through the filter was quantified. (D) Endothelial monolayers were scratched, incubated in culture medium supplemented with 20% pre- or post-HD serum and 24 h later representative images of the plates were taken. Data are expressed as mean  $\pm$  SEM of three independent experiments. \*, \*\* and \*\*\* represent  $p < 0.05$ ,  $p < 0.01$  and  $p < 0.001$  respectively. doi:10.1371/journal.pone.0030975.g001

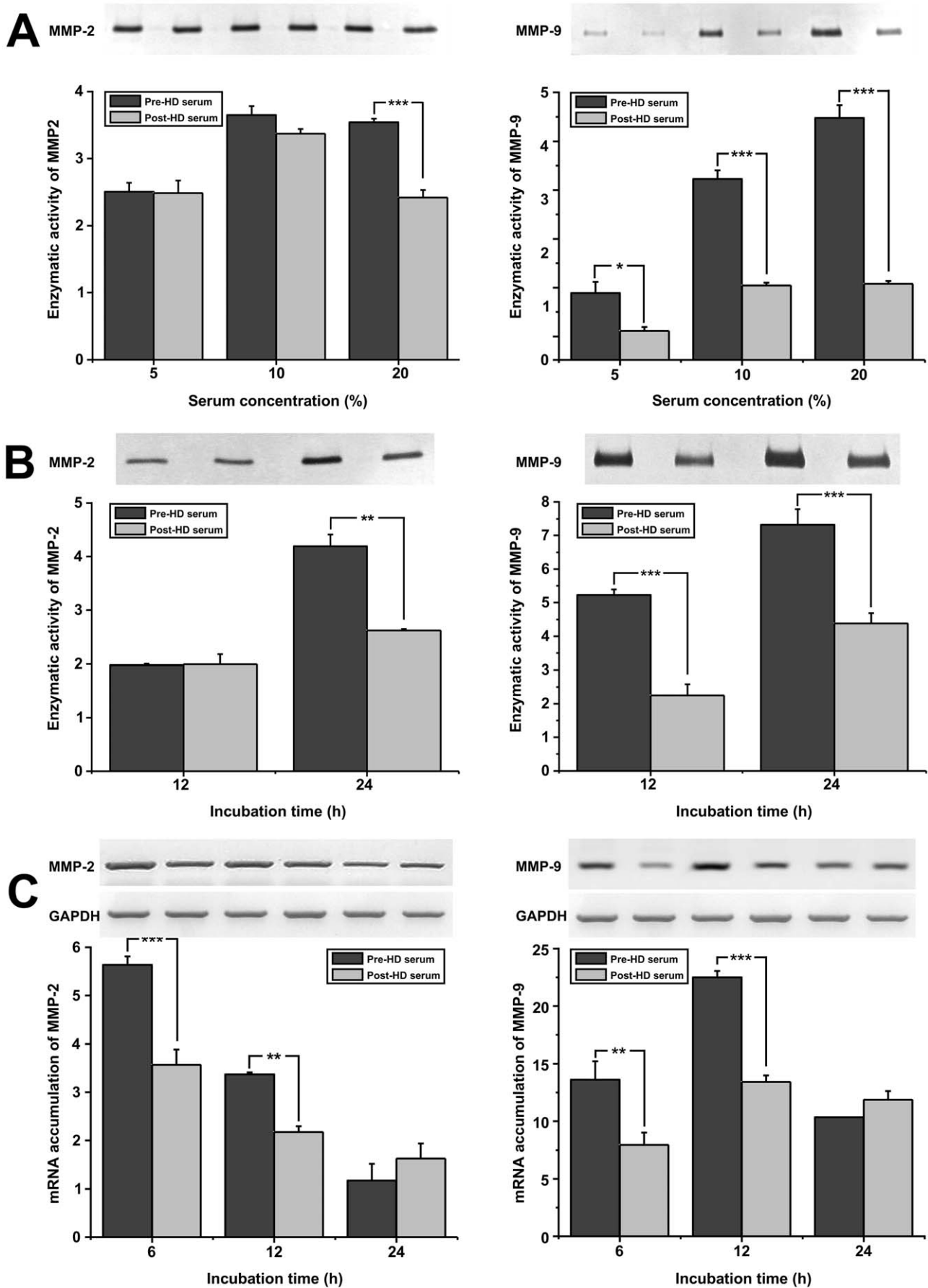
cells or at the mRNA level by RT-PCR. As shown in Figure 2A, the pre-HD serum induces a dose dependent increase in both MMP-2 and MMP-9 protein levels in the medium of HUVEC as compared to the relevant samples where post-HD serum was used. Since the difference was more pronounced when 20% of either pre- or post-HD serum was added to the culture medium, we performed all following experiments using this serum concentration. As shown in Figure 2B, incubation of HUVEC with pre-HD serum led to increased MMP-9 activity in the cell supernatant after 12 and 24 hours, while it also increases MMP-2 protein levels after 24 hours as compared to the effect of the post-HD serum. Furthermore incubation of HUVEC with pre- or post-HD serum at the concentration of 20% induces MMP-2 and MMP-9 expression levels in a statistically significant manner reaching a maximum at 6 and 12 hours respectively (Figure 2C).

Since both *in vitro* and *in vivo*, activity of MMPs is counterbalanced by the expression of naturally expressed inhibitors (tissue inhibitors of metalloproteinases, TIMPs), we assessed the expression levels of TIMP-1 and TIMP-2 protein levels on supernatants

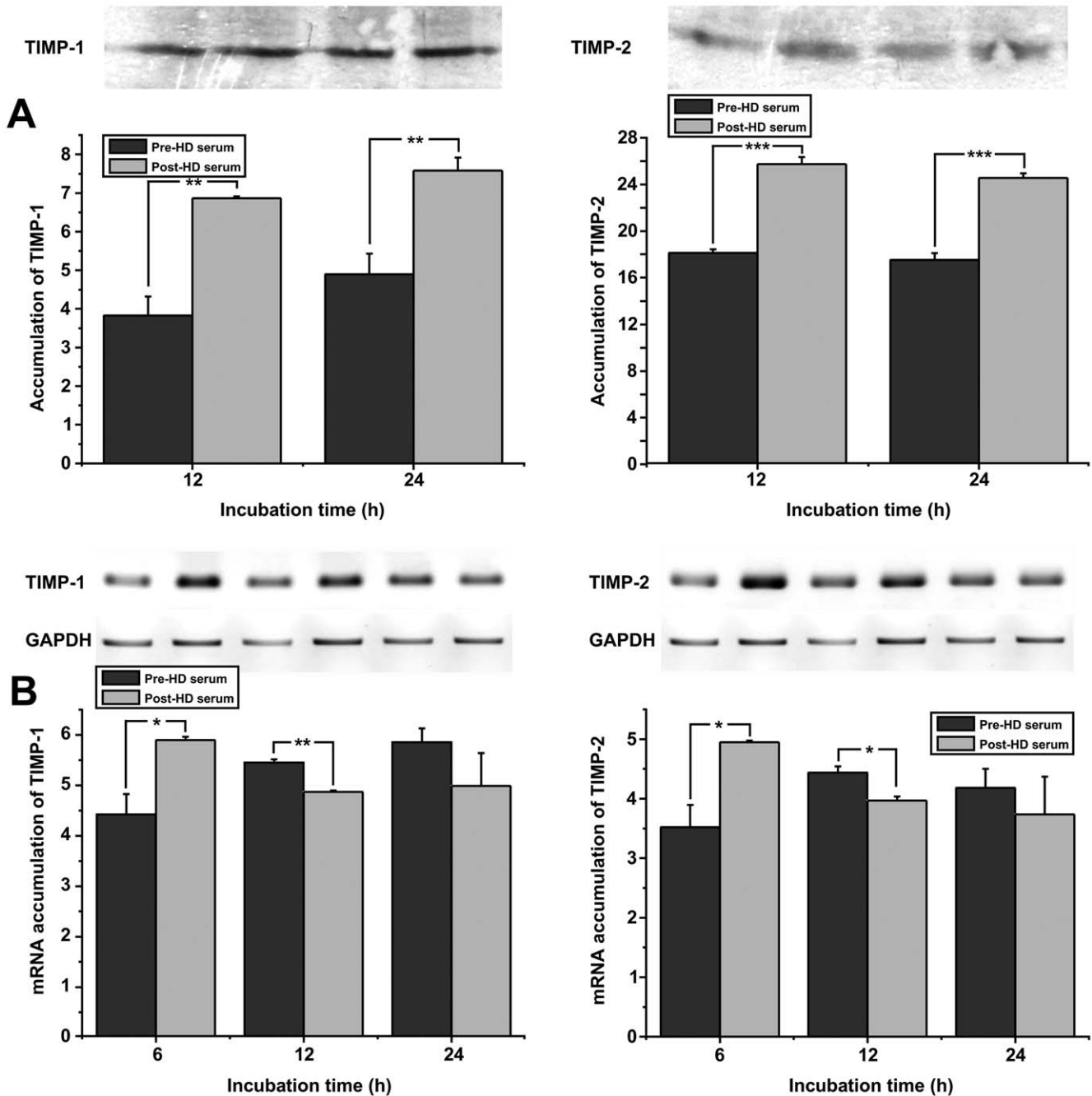
from HUVEC that were stimulated with sera at the concentration of 20%. As shown in Figure 3A, we observed a statistically significant increase of TIMP-1 and TIMP-2 protein levels when HUVEC were incubated with post-HD serum, compared to pre-HD serum. This increased accumulation of TIMP-1 and -2 proteins in the medium of cells cultured with uremic-free sera can be attributed to increased expression of the relative genes, as shown in Figure 3B.

#### Uremic toxins present in the sera of patients with CKD inhibit the expression of extracellular matrix proteins

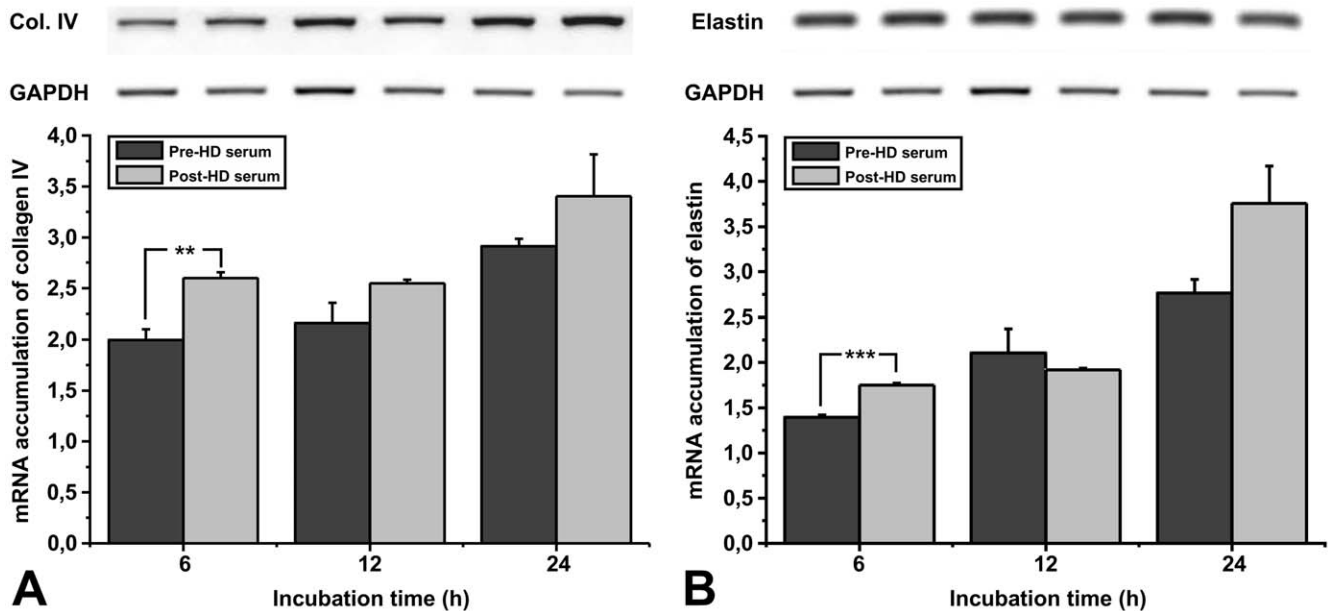
To investigate the effect of uremic toxins in the sera from patients with CKD on the expression of extracellular matrix components by endothelial cells we analyzed the expression levels of collagen IV and elastin. As shown in Figure 4, incubation of endothelial cells with either pre- or post-HD sera induces the expression of both collagen IV and elastin. This increase is more pronounced when endothelial cells are incubated with the post-HD serum. These data suggest that uremic toxins could inhibit the



**Figure 2. Effect of pre- or post-HD serum on MMP-2, -9 expression.** (A): HUVEC were incubated in medium supplemented with 5%, 10%, 20% pre- or post- HD serum. 4 h later the medium was replaced by minimal medium and 20 h later the supernatants were analyzed for MMP-2 and MMP-9 activity by zymography. (B): HUVEC were incubated with culture medium supplemented with 20% pre- or post- HD serum. 4 h later the medium was replaced by minimal medium and 8 or 20 h later the supernatants were analyzed for MMP-2 and MMP-9 activity by zymography. (C): HUVEC were incubated in culture medium supplemented with 20% pre- or post- HD serum. 6, 12, or 24 h later total RNA was extracted from the cells, RT-PCR reactions were performed using specific primers for MMP-2, MMP-9 or GAPDH mRNAs, the PCR products were analyzed in agarose gels and quantified. Data are expressed as mean  $\pm$  SEM of three independent experiments. \*, \*\* and \*\*\* represent  $p < 0.05$ ,  $p < 0.01$  and  $p < 0.001$  respectively. doi:10.1371/journal.pone.0030975.g002



**Figure 3. Effect of pre- or post-HD serum on the expression of TIMP-1 and TIMP-2.** (A): HUVEC were incubated in culture medium supplemented with 20% pre- or post- HD serum. 4 h later the medium was replaced by minimal medium and 8 h or 20 h later the supernatants were analyzed for TIMP-1 and TIMP-2 proteins by SDS-PAGE. (B): HUVEC were incubated with culture medium supplemented with 20% pre- or post- HD serum. 6, 12, or 24 h later total RNA was extracted from the cells, RT-PCR reactions were performed using specific primers for TIMP-1, TIMP-2 or GAPDH mRNAs, the PCR products were analyzed in agarose gels and quantified. Data are expressed as mean  $\pm$  SEM of three independent experiments. \* and \*\* represent  $p < 0.05$  and  $p < 0.01$  respectively. doi:10.1371/journal.pone.0030975.g003



**Figure 4. Effect of pre- or post-HD serum on the expression of collagen-IV and elastin.** HUVEC were incubated with culture medium supplemented with 20% pre- or post- HD serum. 6, 12, or 24 h later total RNA was extracted from the cells, RT-PCR reactions were performed using specific primers for Collagen IV, Elastin or GAPDH mRNAs, the PCR products were analyzed in agarose gels and quantified. Data are expressed as mean  $\pm$  SEM of three independent experiments. \*, \*\* and \*\*\* represent  $p < 0.05$ ,  $p < 0.01$  and  $p < 0.001$  respectively. doi:10.1371/journal.pone.0030975.g004

immediate healing response of endothelial cells *in vivo* after injury or local endothelial loss due to apoptosis.

## Discussion

Uremic toxins contribute to endothelial dysfunction in CKD. In renal failure, endothelial dysfunction and cardiovascular complications are closely linked [14,31–35]. Endothelial cell damage correlates with thrombosis, hypertension and may be also responsible for accelerated atherosclerosis in patients with CKD. Traditional risk factors cannot explain the high incidence of cardiovascular disease in patients with CKD therefore several studies focus on other parameters such as endothelial dysfunction or insulin resistance. In this paper, we focused on the mechanism of endothelial dysfunction induced by uremic toxins, including the remodelling of the extracellular matrix.

Our results demonstrate that uremic toxins modulate primary responses of endothelial cells that correlate with the function of endothelium *in vivo*. Endothelial loss, due to apoptosis leads to vascular complications like thrombosis, increased inflammatory infiltration to the intimal area of the arteries and impaired NO production that lead to hypertension and atherosclerosis. Our results demonstrate that uremic toxins induce apoptosis of endothelial cells *in vitro*. This result is in line with previous reports that link increased endothelial cell apoptosis and renal failure, an effect that was mainly attributed to increased levels of AGEs [34,36]. *In vivo* loss of the endothelial monolayer leads to the formation of a thrombus but it might also be compensated by the increased proliferation of endothelial cells neighboring the damaged area or from direct recruitment of endothelial cell precursors from the bone marrow or circulation [37]. Our results indicate that in parallel to the increased apoptosis that is observed in endothelial cells when they are incubated with media containing uremic toxins, a decreased proliferation and migration capacity of the endothelial cells is observed. These results might also explain the thrombophilia that is observed in patients with renal failure

that often leads to vascular clotting, heart attacks and strokes. The fact that increased apoptosis, reduced proliferation and inhibition of migration were dependent on the concentration of the serum as well as the fact these effects were reversed by HD, indicate that the primary response of endothelial cells to ingredients of the sera in patients with CKD is to the uremic toxins. This result is of particular interest since in a previous study low levels of AGEs were not linked to a better survival rate in HD patients [38]. Our results indicate thought that HD significantly improves endothelial biological functions *in vitro* indicating that the primary endothelial damage is related most probably to uremic toxins.

Several studies indicated the role of disturbed extracellular matrix metabolism in defective myocardial and vascular remodelling [39–52]. Therefore MMPs as well as their tissue inhibitors have been proposed as a group of factors that add to the pathogenesis of atherosclerosis. Animal models and *in vitro* investigations have shown their multifaceted actions, varying from protective and anti-atherogenic in the case of TIMP-2, through neutral of TIMP-1 or ambiguous of MMP-9, to pro-atherogenic of MMP-2 [52–57]. Moreover, gelatinases A and B (MMP-2 and MMP-9) constitute risk factors for myocardial infarction [58] whereas their tissue inhibitors TIMPs have an impact on postmyocardial infarction remodelling [59,60] and correlate positively with left ventricular mass and wall thickness [61]. The role of MMPs in CKD has been studied extensively [62–65], and especially the impact on ischemic acute renal injury and scarring in the course of glomerulopathies [66–68].

Our data demonstrate that uremic toxins modulate the expression of MMP production by endothelial cells *in vitro* as well as their enzymatic activity. Interestingly, our data clearly demonstrate an opposite effect of uremic toxins on the production of MMPs and TIMPs. When the protein levels were evaluated a clear reduction in the production of TIMP-1 and -2 was observed in endothelial cells that were cultured with pre-HD serum. Relative expression levels of TIMP RNA supported these results.

The initial strong induction of TIMP-1 and -2 expression levels when endothelial cells were cultured with post-HD serum were followed by a moderate increased production of TIMPs at prolonged periods of incubation of endothelial cells with pre-HD serum. This response of the cells to uremic sera can only be explained by a time-dependent and well-orchestrated response of endothelial cells in “danger signals” *in vivo* [69–72]. The original response of endothelial cells to uremic toxins leads to the activation of MMPs without affecting the initial levels of TIMPs. Further exposure of the endothelium might initiate the activation of inhibitory pathways that aim the resolution of the inflammation produced by the uremic toxins. In the absence of obvious uremia (like in the case of post-HD serum) the relative production of MMPs versus TIMPs seems to be more balanced which most probably reflects the response of a functional endothelium *in vivo*. Such an endothelial response to uremic toxins *in vivo* might lead to degradation of the extracellular matrix and the basal membrane of the endothelial cells, leading to increased endothelial loss due to anoikis *in vivo*. One could speculate that the expression of MMPs might potentiate the ability of the endothelial cells to modulate the extracellular matrix locally and induce wound healing. Though, this is most probably not the case since our experiments clearly demonstrate a decreased ability of endothelial cells to migrate and cover damaged regions *in vitro*. The increased MMP production seems to correlate more with the increased thrombotic incidence and atherosclerosis observed in patients with kidney disease. Increased MMP activity correlates with atherosclerosis development and plaque rupture. Plaque vulnerability especially is linked to intimal thickening, loss of the collagen fibrous cap surrounding mostly necrotic areas of atherosclerotic lesions, or increased angiogenesis and hemorrhage within the atherosclerotic lesions. Our results suggest that uremic toxins, by modulating the expression and activity of MMPs might be major regulators of the thrombotic incidents observed in patients with CKD.

Our results demonstrate that endothelial cells contribute at the early response to uremic toxins to the overall systemic inflammation observed in patients with CKD. This response resembles the procedure of the activation of the endothelium during atherosclerosis. During the early stages of atherosclerosis progression endothelial cells express adhesion molecules (e.g. VCAM-1,

ICAM-1, E-selectin) as well as chemokines (e.g. MCP-1, MCP-3, Fractalkine) [25,69,73,74] upon activation of the nuclear factor-kappa B [75]. This response leads to the recruitment of immune cells (namely monocytes) into the intima of the large arteries. At latter stages the disease does not depend on the endothelial response but mainly to the cells of the immune system either resolve the initial inflammation or activate an adaptive immune response [76–78]. We would like to propose a similar process during the development and establishment of CKD. At the early stages the accumulation of uremic toxins in the plasma of patients could lead to altered functions of the endothelium, reorganization of the extracellular matrix of the large arteries and an inflammatory response. At latter stages, the presence of uremic toxins might have no effect on the activation of specific molecular response in endothelial cells, though it could contribute to increased apoptosis and reduced wound healing. The practical significance of this hypothesis, and the stage where the progression of the disease is still endothelial-dependent definitely deserves further investigation.

The advantage of this study relies on the fact that we used pre-HD and post-HD sera from the same patients. To our understanding our approach provided the best internal controls to study the direct effect of uremic toxins present in patients with CKD on endothelial cells. This approach prevented us from using sera from healthy patients since HD could not be applied. Nevertheless this was not the aim of this study that aimed on the net effect of uremic toxins on endothelial cells and not the overall effect of sera from patients with CKD compared to normal sera on endothelial cells (an approach that was used extensively in the past). Our results demonstrate that uremic toxins contribute to a great extent to deregulation of endothelial cells, most probably at the early stages of the development of kidney disease. Further studies are ongoing regarding the clinical evaluation and significance of our results.

## Author Contributions

Conceived and designed the experiments: PK JV AP. Performed the experiments: KZ TB SK. Analyzed the data: PK JV AP. Contributed reagents/materials/analysis tools: PK JV. Wrote the paper: PK JV AP.

## References

- Kitagawa S, Yamaguchi Y, Kunitomo M, Sameshima E, Fujiwara M (1994) NG-nitro-L-arginine-resistant endothelium-dependent relaxation induced by acetylcholine in the rabbit renal artery. *Life Sci* 55: 491–498.
- Matsuda H, Hayashi K, Wakino S, Kubota E, Honda M, et al. (2004) Role of endothelium-derived hyperpolarizing factor in ACE inhibitor-induced renal vasodilation *in vivo*. *Hypertension* 43: 603–609.
- Ruilope LM, Redon J, Schmieder R (2007) Cardiovascular risk reduction by reversing endothelial dysfunction: ARBs, ACE inhibitors, or both? Expectations from the ONTARGET Trial Programme. *Vasc Health Risk Manag* 3: 1–9.
- Sahin G, Yalcin AU, Akcar N (2007) Effect of N-acetylcysteine on endothelial dysfunction in dialysis patients. *Blood Purif* 25: 309–315.
- Chappey O, Wautier MP, Wautier JL (1997) Structure and functions of the endothelium. *Rev Prat* 47: 2223–2226.
- Anggard EE (1992) The regulatory functions of the endothelium. *Jpn J Pharmacol* 58 Suppl 2: 200P–206P.
- Fleming I, Bauersachs J, Busse R (1996) Paracrine functions of the coronary vascular endothelium. *Mol Cell Biochem* 157: 137–145.
- Kharbanda RK, Deanfield JE (2001) Functions of the healthy endothelium. *Coron Artery Dis* 12: 485–491.
- Ryan JW, Ryan US (1982) Metabolic functions of the pulmonary vascular endothelium. *Adv Vet Sci Comp Med* 26: 79–98.
- van Hinsbergh VW (1992) Regulatory functions of the coronary endothelium. *Mol Cell Biochem* 116: 163–169.
- Vane JR, Anggard EE, Botting RM (1990) Regulatory functions of the vascular endothelium. *N Engl J Med* 323: 27–36.
- Hayakawa H, Raij L (1999) Relationship between hypercholesterolaemia, endothelial dysfunction and hypertension. *J Hypertens* 17: 611–619.
- Ishikawa M, Namiki A, Kubota T, Fukazawa M, Joki N, et al. (2001) Effect of hyperhomocysteinemia on endothelial activation and dysfunction in patients with end-stage renal disease. *Am J Cardiol* 88: 1203–1205.
- Kunz K, Petitjean P, Lisri M, Chantrel F, Koehl C, et al. (1999) Cardiovascular morbidity and endothelial dysfunction in chronic haemodialysis patients: is homocyst(e)ine the missing link? *Nephrol Dial Transplant* 14: 1934–1942.
- Takagi M, Wada H, Mukai K, Kihira H, Yano S, et al. (1994) Increased vascular endothelial cell markers in patients with chronic renal failure on maintenance haemodialysis. *Blood Coagul Fibrinolysis* 5: 713–717.
- Lazarus JM, Hampers C, Merrill JP (1974) Hypertension in chronic renal failure. Treatment with hemodialysis and nephrectomy. *Arch Intern Med* 133: 1059–1066.
- Baradaran A, Nasri H (2005) Correlation of serum parathormone with hypertension in chronic renal failure patients treated with hemodialysis. *Saudi J Kidney Dis Transpl* 16: 288–292.
- Jacobson SH, Egberg N, Hylander B, Lundahl J (2002) Correlation between soluble markers of endothelial dysfunction in patients with renal failure. *Am J Nephrol* 22: 42–47.
- Kornerup HJ (1976) Hypertension in end-stage renal disease. The relationship between blood pressure, plasma renin, plasma renin substrate and exchangeable sodium in chronic hemodialysis patients. *Acta Med Scand* 200: 257–261.
- Szczepanska M, Szprynger K, Adamczyk P, Trembecka-Dubiel E, Oswiecimska J (2005) Arterial hypertension in children with end-stage renal failure treated with hemodialysis. *Pol Merkuri Lekarski* 18: 17–21.
- Jaffe EA, Nachman RL, Becker CG, Minick CR (1973) Culture of human endothelial cells derived from umbilical veins. Identification by morphologic and immunologic criteria. *J Clin Invest* 52: 2745–2756.



22. Polykratis A, Katsoris P, Courty J, Papadimitriou E (2005) Characterization of heparin affinity regulatory peptide signaling in human endothelial cells. *J Biol Chem* 280: 22454–22461.
23. Mosmann T (1983) Rapid colorimetric assay for cellular growth and survival: application to proliferation and cytotoxicity assays. *J Immunol Methods* 65: 55–63.
24. Chung TW, Kim JR, Suh JI, Lee YC, Chang YC, et al. (2004) Correlation between plasma levels of matrix metalloproteinase (MMP)-9/MMP-2 ratio and alpha-fetoproteins in chronic hepatitis carrying hepatitis B virus. *J Gastroenterol Hepatol* 19: 565–571.
25. Libby P (2002) Inflammation in atherosclerosis. *Nature* 420: 868–874.
26. Brodsky SV, Yamamoto T, Tada T, Kim B, Chen J, et al. (2002) Endothelial dysfunction in ischemic acute renal failure: rescue by transplanted endothelial cells. *Am J Physiol Renal Physiol* 282: F1140–1149.
27. Caramelo C, Espinosa G, Manzarbeitia F, Cernadas MR, Perez Tejerizo G, et al. (1996) Role of endothelium-related mechanisms in the pathophysiology of renal ischemia/reperfusion in normal rabbits. *Circ Res* 79: 1031–1038.
28. Costa-Hong V, Bortolotto LA, Jorgetti V, Consolim-Colombo F, Krieger EM, et al. (2009) Oxidative stress and endothelial dysfunction in chronic kidney disease. *Arq Bras Cardiol* 92: 381–386.
29. Cross J (2002) Endothelial dysfunction in uraemia. *Blood Purif* 20: 459–461.
30. Karbowska A, Boratynska M, Kusztal M, Klinger M (2009) Hyperuricemia is a mediator of endothelial dysfunction and inflammation in renal allograft recipients. *Transplant Proc* 41: 3052–3055.
31. Annuk M, Zilmer M, Fellstrom B (2003) Endothelium-dependent vasodilation and oxidative stress in chronic renal failure: impact on cardiovascular disease. *Kidney Int Suppl*: S50–53.
32. Bolton CH, Downs LG, Victory JG, Dwight JF, Tomson CR, et al. (2001) Endothelial dysfunction in chronic renal failure: roles of lipoprotein oxidation and pro-inflammatory cytokines. *Nephrol Dial Transplant* 16: 1189–1197.
33. Guerra RJ, Brotherton AF, Goodwin PJ, Clark CR, Armstrong ML, et al. (1989) Mechanisms of abnormal endothelium-dependent vascular relaxation in atherosclerosis: implications for altered autocrine and paracrine functions of EDRF. *Blood Vessels* 26: 300–314.
34. Linden E, Cai W, He JC, Xue C, Li Z, et al. (2008) Endothelial dysfunction in patients with chronic kidney disease results from advanced glycation end products (AGE)-mediated inhibition of endothelial nitric oxide synthase through RAGE activation. *Clin J Am Soc Nephrol* 3: 691–698.
35. Zoccali C, Maio R, Tripepi G, Mallamaci F, Peticone F (2006) Inflammation as a mediator of the link between mild to moderate renal insufficiency and endothelial dysfunction in essential hypertension. *J Am Soc Nephrol* 17: S64–68.
36. Nin JW, Ferreira I, Schalkwijk CG, Prins MH, Chaturvedi N, et al. (2009) Levels of soluble receptor for AGE are cross-sectionally associated with cardiovascular disease in type 1 diabetes, and this association is partially mediated by endothelial and renal dysfunction and by low-grade inflammation: the EURODIAB Prospective Complications Study. *Diabetologia* 52: 705–714.
37. Song G, Nguyen DT, Pietramaggiore G, Scherer S, Chen B, et al. (2010) Use of the parabiotic model in studies of cutaneous wound healing to define the participation of circulating cells. *Wound Repair Regen* 18: 426–432.
38. Schwedler SB, Metzger T, Schinzel R, Wanner C (2002) Advanced glycation end products and mortality in hemodialysis patients. *Kidney Int* 62: 301–310.
39. Chen H, Li D, Saldeen T, Mehta JL (2003) TGF-beta 1 attenuates myocardial ischemia-reperfusion injury via inhibition of upregulation of MMP-1. *Am J Physiol Heart Circ Physiol* 284: H1612–1617.
40. Djuric T, Zivkovic M, Radak D, Jekic D, Radak S, et al. (2008) Association of MMP-3 5A/6A gene polymorphism with susceptibility to carotid atherosclerosis. *Clin Biochem* 41: 1326–1329.
41. Hayashidani S, Tsutsui H, Ikeuchi M, Shiomi T, Matsusaka H, et al. (2003) Targeted deletion of MMP-2 attenuates early LV rupture and late remodeling after experimental myocardial infarction. *Am J Physiol Heart Circ Physiol* 285: H1229–1235.
42. Kelly D, Khan S, Cockerill G, Ng LL, Thompson M, et al. (2008) Circulating stromelysin-1 (MMP-3): a novel predictor of LV dysfunction, remodeling and all-cause mortality after acute myocardial infarction. *Eur J Heart Fail* 10: 133–139.
43. Lee WY, Wei HJ, Lin WW, Yeh YC, Hwang SM, et al. (2011) Enhancement of cell retention and functional benefits in myocardial infarction using human amniotic-fluid stem-cell bodies enriched with endogenous ECM. *Biomaterials* 32: 5558–5567.
44. Lehrke M, Greif M, Broedl UC, Leberer C, Laubender RP, et al. (2009) MMP-1 serum levels predict coronary atherosclerosis in humans. *Cardiovasc Diabetol* 8: 50.
45. Lindsey ML (2004) MMP induction and inhibition in myocardial infarction. *Heart Fail Rev* 9: 7–19.
46. Matsumura S, Iwanaga S, Mochizuki S, Okamoto H, Ogawa S, et al. (2005) Targeted deletion or pharmacological inhibition of MMP-2 prevents cardiac rupture after myocardial infarction in mice. *J Clin Invest* 115: 599–609.
47. Matsusaka H, Ikeuchi M, Matsushima S, Ide T, Kubota T, et al. (2005) Selective disruption of MMP-2 gene exacerbates myocardial inflammation and dysfunction in mice with cytokine-induced cardiomyopathy. *Am J Physiol Heart Circ Physiol* 289: H1858–1864.
48. Napoli C (2002) MMP inhibition and the development of cerebrovascular atherosclerosis: The road ahead. *Stroke* 33: 2864–2865.
49. Pradhan-Palikhe P, Vikatmaa P, Lajunen T, Palikhe A, Lepantalo M, et al. (2010) Elevated MMP-8 and decreased myeloperoxidase concentrations associate significantly with the risk for peripheral atherosclerosis disease and abdominal aortic aneurysm. *Scand J Immunol* 72: 150–157.
50. Tarin C, Gomez M, Calvo E, Lopez JA, Zaragoza C (2009) Endothelial nitric oxide deficiency reduces MMP-13-mediated cleavage of ICAM-1 in vascular endothelium: a role in atherosclerosis. *Arterioscler Thromb Vasc Biol* 29: 27–32.
51. Wakatsuki S, Suzuki J, Ogawa M, Masumura M, Muto S, et al. (2008) A novel IKK inhibitor suppresses heart failure and chronic remodeling after myocardial ischemia via MMP alteration. *Expert Opin Ther Targets* 12: 1469–1476.
52. Zureik M, Beaudoux JL, Courbon D, Benetos A, Ducimetiere P (2005) Serum tissue inhibitors of metalloproteinases 1 (TIMP-1) and carotid atherosclerosis and aortic arterial stiffness. *J Hypertens* 23: 2263–2268.
53. de Nooijer R, Verkleij CJ, von der Thusen JH, Jukema JW, van der Wall EE, et al. (2006) Lesional overexpression of matrix metalloproteinase-9 promotes intraplaque hemorrhage in advanced lesions but not at earlier stages of atherogenesis. *Arterioscler Thromb Vasc Biol* 26: 340–346.
54. Florys B, Glowinska B, Urban M, Peczynska J (2006) Metalloproteinases MMP-2 and MMP-9 and their inhibitors TIMP-1 and TIMP-2 levels in children and adolescents with type 1 diabetes. *Endokrynol Diabetol Chor Przemiany Materii Wieku Rozw* 12: 184–189.
55. Ho FM, Liu SH, Lin WW, Liu CS (2007) Opposite effects of high glucose on MMP-2 and TIMP-2 in human endothelial cells. *J Cell Biochem* 101: 442–450.
56. Luttun A, Lutgens E, Manderveld A, Maris K, Collen D, et al. (2004) Loss of matrix metalloproteinase-9 or matrix metalloproteinase-12 protects apolipoprotein E-deficient mice against atherosclerotic media destruction but differentially affects plaque growth. *Circulation* 109: 1408–1414.
57. Wang CQ, Wang S, Tang DM, Lin X, Ding HY, et al. (2005) Effects of TIMP-2 gene transfer on atherosclerotic plaque in rabbits. *Zhonghua Xin Xue Guan Bing Za Zhi* 33: 405–410.
58. Jeffers BJ, Whincup P, Welsh P, Wannamethee G, Rumley A, et al. (2010) Prospective study of matrix metalloproteinase-9 and risk of myocardial infarction and stroke in older men and women. *Atherosclerosis* 208: 557–563.
59. Kandalam V, Basu R, Abraham T, Wang X, Awad A, et al. (2010) Early activation of matrix metalloproteinases underlies the exacerbated systolic and diastolic dysfunction in mice lacking TIMP3 following myocardial infarction. *Am J Physiol Heart Circ Physiol* 299: H1012–1023.
60. Kandalam V, Basu R, Abraham T, Wang X, Soloway PD, et al. (2010) TIMP2 deficiency accelerates adverse post-myocardial infarction remodeling because of enhanced MT1-MMP activity despite lack of MMP2 activation. *Circ Res* 106: 796–808.
61. Hansson J, Lind L, Hulthe J, Sundstrom J (2009) Relations of serum MMP-9 and TIMP-1 levels to left ventricular measures and cardiovascular risk factors: a population-based study. *Eur J Cardiovasc Prev Rehabil* 16: 297–303.
62. Andrews KL, Betsuyaku T, Rogers S, Shipley JM, Senior RM, et al. (2000) Gelatinase B (MMP-9) is not essential in the normal kidney and does not influence progression of renal disease in a mouse model of Alport syndrome. *Am J Pathol* 157: 303–311.
63. Musial K, Zvolinska D (2011) Matrix metalloproteinases (MMP-2,9) and their tissue inhibitors (TIMP-1,2) as novel markers of stress response and atherogenesis in children with chronic kidney disease (CKD) on conservative treatment. *Cell Stress Chaperones* 16: 97–103.
64. Pawlak K, Mysliwiec M, Pawlak D (2011) Peripheral blood level alterations of MMP-2 and MMP-9 in patients with chronic kidney disease on conservative treatment and on hemodialysis. *Clin Biochem* 44: 838–843.
65. Schaefer L, Han X, Gretz N, Hafner C, Meier K, et al. (1996) Tubular gelatinase A (MMP-2) and its tissue inhibitors in polycystic kidney disease in the Han:SPRD rat. *Kidney Int* 49: 75–81.
66. Caron A, Desrosiers RR, Langlois S, Beliveau R (2005) Ischemia-reperfusion injury stimulates gelatinase expression and activity in kidney glomeruli. *Can J Physiol Pharmacol* 83: 287–300.
67. Cheng S, Pollock AS, Mahimkar R, Olson JL, Lovett DH (2006) Matrix metalloproteinase 2 and basement membrane integrity: a unifying mechanism for progressive renal injury. *FASEB J* 20: 1898–1900.
68. Johnson TS, Haylor JL, Thomas GL, Fisher M, El Nahas AM (2002) Matrix metalloproteinases and their inhibitions in experimental renal scarring. *Exp Nephrol* 10: 182–195.
69. Hansson G (1997) Vascular immune reactions in arteritis and atherosclerosis. Receptors for endothelial adhesion. *Lakartidningen* 94: 852–854.
70. Hansson GK, Bondjers G (1987) Endothelial dysfunction and injury in atherosclerosis. *Acta Med Scand Suppl* 715: 11–17.
71. Maier JA, Malpuech-Brugere C, Zimowska W, Rayssiguier Y, Mazur A (2004) Low magnesium promotes endothelial cell dysfunction: implications for atherosclerosis, inflammation and thrombosis. *Biochim Biophys Acta* 1689: 13–21.
72. Mysliwiec M, Borawski J, Naumnik B, Ryzewska-Rosolowska A (2004) Endothelial dysfunction, atherosclerosis and thrombosis in uremia—possibilities of intervention. *Rocz Akad Med Bialymst* 49: 151–156.
73. Hansson GK, Libby P (2006) The immune response in atherosclerosis: a double-edged sword. *Nat Rev Immunol* 6: 508–519.
74. Libby P, Aikawa M, Jain MK (2006) Vascular endothelium and atherosclerosis. *Handb Exp Pharmacol* 176 Pt 2: 285–306.

75. Gareus R, Kotsaki E, Xanthoulea S, van der Made I, Gijbels MJ, et al. (2008) Endothelial cell-specific NF-kappaB inhibition protects mice from atherosclerosis. *Cell Metab* 8: 372–383.
76. Seimon T, Tabas I (2009) Mechanisms and consequences of macrophage apoptosis in atherosclerosis. *J Lipid Res* 50 Suppl: S382–387.
77. Tabas I (2007) Apoptosis and efferocytosis in mouse models of atherosclerosis. *Curr Drug Targets* 8: 1288–1296.
78. Thorp E, Tabas I (2009) Mechanisms and consequences of efferocytosis in advanced atherosclerosis. *J Leukoc Biol* 86: 1089–1095.