

Specificity Protein 1 (Sp1) Oscillation Is Involved in Copper Homeostasis Maintenance by Regulating Human High-Affinity Copper Transporter 1 Expression[§]

Zheng D. Liang, Wen-Bin Tsai, Mei-Yi Lee, Niramol Savaraj, and Macus Tien Kuo

Departments of Molecular Pathology, the University of Texas MD Anderson Cancer Center, Houston, Texas (Z.D.K., W.-B.T., M.-Y.L., M.T.K.); Institute of Basic Medical Sciences, Institute of Clinical Medicine, National Cheng Kung University, Tainan, Taiwan (M.-Y.L.); and Hematology-Oncology Section, VA Medical Center, Miami, Florida (N.S.)

Received October 17, 2011; accepted December 15, 2011

ABSTRACT

Copper is an essential micronutrient for cell growth but is toxic in excess. Copper transporter (Ctr1) plays an important role in regulating adequate copper levels in mammalian cells. We have shown previously that expression of the human high-affinity copper transporter (hCtr1) was transcriptionally up-regulated under copper-depleted conditions and down-regulated under replete conditions; moreover, elevated hCtr1 levels suppress hCtr1 expression. Specificity protein 1 (Sp1) regulates expression of hCtr1 under copper-stressed conditions. In this study, we made the following important observations: 1) Sp1 expression is down-regulated under copper-replete conditions but up-regulated under copper-depleted conditions. These up- and down-regulations of Sp1 in turn regulate hCtr1 expression to control copper homeo-

stasis. 2) Copper-regulated Sp1 expression involved Sp1 binding to its own promoter as demonstrated by the chromatin immunoprecipitation assay; therefore, Sp1 is also transcriptionally self-regulated via hCtr1/copper intermediation. 3) Both zinc finger and glutamine-rich transactivation domains of Sp1 are involved in the Sp1-mediated hCtr1 and Sp1 regulation by copper stresses. 4) Although Sp3 expression is also regulated by copper availability, Sp3 does not regulate hCtr1 homeostasis. Collectively, our results demonstrated that mammalian cells use Sp1 oscillation in response to copper availability to regulate copper homeostasis through hCtr1 expression in a tripartite inter-regulatory relationship. These findings have important implications in mammalian copper physiology regulation.

Introduction

Copper is a micronutrient that plays an essential role in normal human physiology. Copper deficiency in mammals causes embryonic and neonatal abnormalities in many systems including hematopoietic, cardiovascular, central nervous system, and liver functions. Moreover, copper is a redox-active element, existing in both the Cu⁺ and Cu²⁺ states, and excess copper ions cause damages to many vital organs as manifested in Wilson's disease (Collins et al., 2010). An evolutionarily conserved mechanism for maintaining cellular copper homeostasis in response to stresses

induced by copper deficiency or excess in eukaryotic cells relies on the interplay among copper transporters (Ctrs) for absorption and storage, chaperones for delivering copper to various compartments, and exporters (ATP7A and ATP7B) for the elimination of excess copper (for review, see Kim et al., 2008). However, the mechanisms that regulate copper homeostasis in mammalian cells are largely unknown.

Many studies have demonstrated that regulation of the copper homeostasis initial response to copper stresses resides on Ctr1 (for reviews, see Kuo et al., 2007; Kim et al., 2008). The human high-affinity Ctr1 (hCtr1) is a single polypeptide of 190 amino acids consisting of three transmembrane motifs—a methionine-rich N terminus, a cysteine-histidine cluster in the C terminus, and an MXXXM in the second transmembrane domain—that are important for the copper transport function (for reviews, see Kuo et al., 2007; Kim et al., 2008). In addition to its important role

This work was supported by the National Institutes of Health National Cancer Institute [Grants R01-CA149620, CA16672].

Article, publication date, and citation information can be found at <http://molpharm.aspetjournals.org>.

<http://dx.doi.org/10.1124/mol.111.076422>.

[§] The online version of this article (available at <http://molpharm.aspetjournals.org>) contains supplemental material.

ABBREVIATIONS: Ctr, copper transporter; hCtr1, human high-affinity copper transporter 1; DN, dominant negative; Sp1, specificity protein 1; SCLC, small-cell lung cancer; TM, tetrathiomolybdate; DBD, DNA-binding domain; TAD, transactivating domain; PCR, polymerase chain reaction; ChIP, chromatin immunoprecipitation; RPA, RNase protection assay; TM, tetrathiomolybdate; siRNA, small interfering RNA; wt, wild type; endo, endogenous; exo, exogenous; HEK, human embryonic kidney; ZF, zinc finger; KLF, Krüppel-like factor; HA, hemagglutinin.

in regulating copper physiology, hCtr1 is also known as a transporter for platinum drugs (Ishida et al., 2002); reduced expression of hCtr1 is often associated with platinum drug resistance in cultured cells (Kuo et al., 2007; Howell et al., 2010) and in clinical settings (Ishida et al., 2010; Chen et al., 2011).

Soon after cells are treated with excess copper, Ctr1 protein is internalized and degraded after an endocytic process (Ooi et al., 1996; Petris et al., 2003). Upon removal of copper treatment, the internalized copper recycles back to the membrane (Molloy and Kaplan, 2009), supporting a post-translational mechanism of Ctr1 expression in response to copper stress. Post-translational regulation of Ctr1 in response to copper stress was observed in mice fed copper-deficient diets (Nose et al., 2010).

Transcriptional regulation of hCtr1 in response to copper stresses has also been reported. We demonstrated previously that in cultured cells overexpressing the physiological copper chelator GSH, hCtr1 mRNA and protein levels were increased by transfecting the recombinant DNA encoding γ -glutamylcysteine synthetase, the rate-limiting enzyme of GSH synthesis (Chen et al., 2008). We also demonstrated that expression of hCtr1 mRNA can be induced by treating cells with the copper chelator bathophenanthroline disulfonic acid and down-regulated by treating with CuSO_4 (Song et al., 2008). The endogenous hCtr1 (endo-hCtr1) expression levels can be modulated by transfection with recombinant DNA encoding hCtr1 constructs (referred to here as exo-hCtr1). That is, down-regulation of endo-hCtr1 was also observed in cells transfected with the wild-type *hCtr1* (*hCtr1*-wt) plasmid (Song et al., 2008) to increase copper transport activities; up-regulation of endo-hCtr1 mRNA was found in cells overexpressing dominant-negative hCtr1 (*hCtr1*-DN) by interfering with copper transport activities. These *hCtr1*-DN recombinants were constructed by site-directed mutagenesis of several critical M residues located at the ecto- or the transmembrane MXXXM domains that are important for copper transport (Liang et al., 2009). Regulation of hCtr1 expression is mediated by the transcription factor Sp1, which interacts with the three GC boxes located at the *hCtr1* promoter (Song et al., 2008).

The missing piece of this transcriptional regulation mechanism of mammalian copper homeostasis is how Sp1 itself behaves in response to copper stresses. The current study was initiated to fill in this gap. We observed that Sp1 expression is also regulated by copper stresses, either by changing copper concentrations in cultured cells or by manipulating hCtr1 expression levels by transfection. Our results demonstrated that human cells use Sp1 oscillation in response to copper stresses in regulating hCtr1 expression to maintain copper homeostasis. These results, together with our previous findings (Song et al., 2008; Liang et al., 2009), which were further confirmed here, allowed us to construct a tripartite inter-regulatory model consisting of Sp1, hCtr1, and copper to regulate mammalian copper homeostasis. Our findings thus provide important new insights into mammalian copper physiology regulation. They also have translational implications for the use of copper modulators in regulating the treatment efficacy of platinum-based cancer chemotherapy.

Materials and Methods

Cell Lines, Recombinant DNA, and Reagents. Small-cell lung cancer (SCLC) cells were obtained from author N.S., and HEK293 cells were obtained from the American Type Culture Collection (Manassas, VA). Establishment of SCLC-*hCtr1*-wt and SCLC-*hCtr1*-DN stable cell lines has been described previously (Liang et al., 2009). Expression-recombinant DNA for *Sp1*-wt, and *Sp2*, *Sp3*, and *Sp4* were described previously (Tsai et al., 2009). Recombinant LexA-VP16 and reporter pLG-(Gal4)₅-(Lex4)₂-E1B-Luc (LexA-Luc) were obtained from Mark Ptashne (Memorial Sloan-Kettering Cancer Center, New York, NY). Tetrathiomolybdate (TM) was obtained from Sigma-Aldrich (St. Louis, MO).

Recombinant DNA Constructs and Transient Transfection Assays. To construct recombinant DNA encoding different domains of Sp1, double-stranded cDNA fragments were synthesized by polymerase chain reaction (PCR) using appropriate primer sets, each tagged with a NotI recognition sequence (available upon request), and full-length Sp1 cDNA as the template. The synthesized DNA was digested by NotI and cloned into the NotI site of the CIN-HA-pcDNA3 vector (Song et al., 2004), and a neomycin-resistance marker was used for transfection selection.

The *Sp1*-Luc reporter construct was obtained from Dr. C. J. Ciudad (University of Barcelona, Barcelona, Spain) (Nicolás et al., 2001). Site-directed mutations in the *Sp1* promoter sequences in the reporter constructs (Sp1-M1 to Sp1-M10) were performed using the QuikChange site-directed mutagenesis kit (Agilent Technologies, Santa Clara, CA). Mutations in the Q-rich2 domain of the Sp1-M3 recombinant were constructed using the same procedure.

For constructing chimerical recombinants encoding the DNA-binding domain (DBD) of LexA or Sp1 fused to transactivating domain (TAD) from VP16 or Sp1, we used the two-step recombinant PCR method using recombinant LexA(1–102)-VP16(410–490) and Sp1 cDNA as templates and appropriate primer sets (available upon request) in the PCRs. The resulting DNA fragments were cloned into the NotI site of the CIN-HA-pcDNA3 vector. All plasmids were confirmed by DNA sequencing. Transient transfection assays were performed using Lipofectamine (Invitrogen, Carlsbad, CA) according to the manufacturer's protocol. Luciferase expression was measured by illuminometer.

Measurement of Endo-mRNA and Exo-mRNA Levels Using the RNase Protection Assay. Plasmid DNA was transfected into cultured cells using lipofectamine. Expression of exo- and endo-mRNA was determined by the RNA protection assay (RPA) using RNase RPA III Assay Kit (Applied Biosystems/Ambion, Austin, TX). The design of RNA probes that can simultaneously detect both endo- and exo-mRNA transcripts in the transfected cells were described previously (Song et al., 2008; Liang et al., 2009).

Chromatin Immunoprecipitation Assay. The ChIP assay was performed with a kit (Millipore, Billerica, MA) following the manufacturer's instructions. The hCtr1 and Sp1 promoter DNA sequences were determined by PCR using appropriate primer sets (available upon request) according to procedures described previously (Tsai et al., 2009).

Western Blotting and Immunohistochemical Staining. Procedures for Western blotting using anti-hCtr1 (Kuo et al., 2001) and anti-Sp1 antibodies (Santa Cruz Biotechnology, Santa Cruz, CA) (Song et al., 2008; Liang et al., 2009) and immunocytochemical staining after confocal microscopy (Chen et al., 2008) were described previously.

Results

Mammalian Copper Homeostasis Is Regulated within the Copper-hCtr1-Sp1 Inter-Regulatory Loop. Regulation of mammalian copper homeostasis is a complex mechanism involving interplay among copper, hCtr1, and Sp1. For clarity, we will present experimental results in sequential

strated that suppression of *hCtr1* by copper treatment is mediated by down-regulation of Sp1, because replenishment of Sp1 by transfection with *Sp1*-wt expression recombinant up-regulates *hCtr1* (Fig. 1H) instead of down-regulating *hCtr1* as when cells were treated with copper alone (Fig. 1A). These results not only support the inter-regulatory relationships among copper, *hCtr1*, and Sp1 but also demonstrate that each of them is self-regulated within the context of overall mammalian copper homeostasis regulation as depicted in Fig. 1I.

Sp1 Is the Sensor of Copper Stresses. The results shown above strongly suggest that mammalian cells use Sp1 oscillation in response to copper imbalance to drive copper homeostatic regulation. This scenario underscores the role of Sp1 as the sensor of copper stresses. To strengthen these observations, we first determined whether copper-sensing Sp1 expression is mediated through the Sp1-binding sites located at the *Sp1* promoter. We used a reporter construct that contains 1615 nucleotides upstream from the transcription start site of *Sp1* linked to a bacterial luciferase gene. Ten putative Sp1-binding sites are located within this promoter region. We mutated each of these sites (Fig. 2A). These reporter plasmids were then transfected into HEK293 cells followed by treatment of the cells with CuSO_4 or TM. Figure 2B shows that expression of the reporter is down-regulated by copper treatment but up-regulated by TM treatment in the *Sp1*-wt-reporter-transfected cells. Mutations at sites 2, 3, 7, 8, 9, and 10 abolished the responses of reporter expression to both copper and TM treatments, suggesting that these sites are important for copper-mediated Sp1 regulation. These sites contain the consensus 5'-GGGCGG- or 5'-CCCGCC sequence, which can be recognized by Sp1 transcription factor (Wierstra, 2008). These results demonstrate

that regulation of Sp1 by copper stresses, like regulation of *hCtr1* [demonstrated previously (Song et al., 2008)], is mediated by the Sp1 bindings to their respective promoters. The finding that these copper-responsive sites are located in two clusters (sites 2 and 3 in one cluster and sites 7 to 10 in the other) suggests that regulation of Sp1 expression may involve the simultaneous binding of Sp1 to these two clusters via Sp1-Sp1 interactions, resulting in DNA looping at the *Sp1* promoter, as suggested from previous study of modified thymidine kinase promoter (Su et al., 1991).

To demonstrate that regulation of *hCtr1* and endo-Sp1 by Sp1 in response to copper concentration variations is mediated by promoter binding, we next performed a ChIP assay. HEK293 cells transfected with recombinant plasmid DNA were treated with either CuSO_4 or TM. Protein-genomic DNA cross-linking was performed by using formaldehyde. After sonication, the chromatin fragments were precipitated with anti-Sp1 antibody using IgG from nonimmunized rabbit as a control. The *hCtr1* and *Sp1* promoter sequences in the precipitates were determined by PCR using primer sets specific to their promoters. Figure 3A shows that CuSO_4 treatment reduces the bindings of Sp1 to *hCtr1* and *Sp1* promoters in both the empty vector- and the *hCtr1*-DN-transfected cells. These results demonstrated that down-regulation of Sp1 and *hCtr1* expression by copper treatment as shown in Fig. 1A is due to reduced Sp1 interactions with the *hCtr1* and *Sp1* promoters. We used two cell lines instead of one to strengthen the results because regulation of *hCtr1* expression by copper stresses should occur in all cell lines. Given the complexity of the assay system, we could not be certain as whether there are differences of Sp1 binding capacities to the *Sp1* and *hCtr1* promoters between these two cell lines. TM treatment enhanced the bindings of Sp1 to the *hCtr1* and *Sp1*

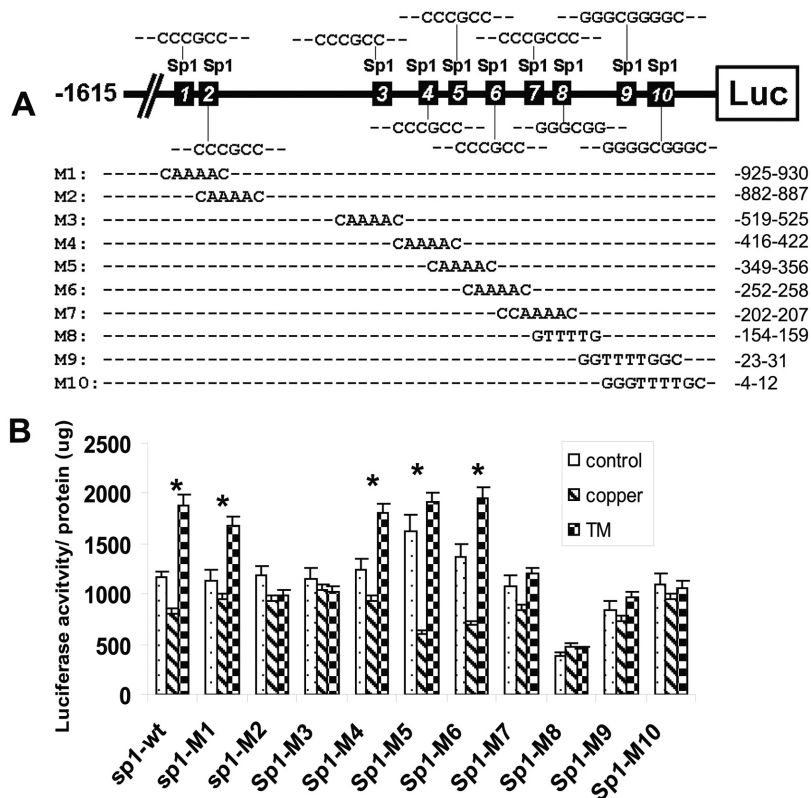


Fig. 2. Identification of copper-responsive elements at the *Sp1* promoter. **A**, schematic diagram showing the locations of ten putative Sp1 binding sites and their sequences. Mutated sequences on these sites (M1–M10) are indicated. Numbers on the right refer to positions of these nucleotides upstream from the transcription start site (not drawn in scale). **B**, transient expression analyses of mutants Sp1 binding sites in response to copper and TM. Each Sp1 mutant was transfected into HEK293 cells and treated with $100 \mu\text{M}$ CuSO_4 or $40 \mu\text{M}$ TM for 16 h. Expression of luciferase reporter was determined by measuring the luciferase activity per microgram of total cellular protein. *, $p < 0.05$, statistically significant, as measured by Student *t* test.

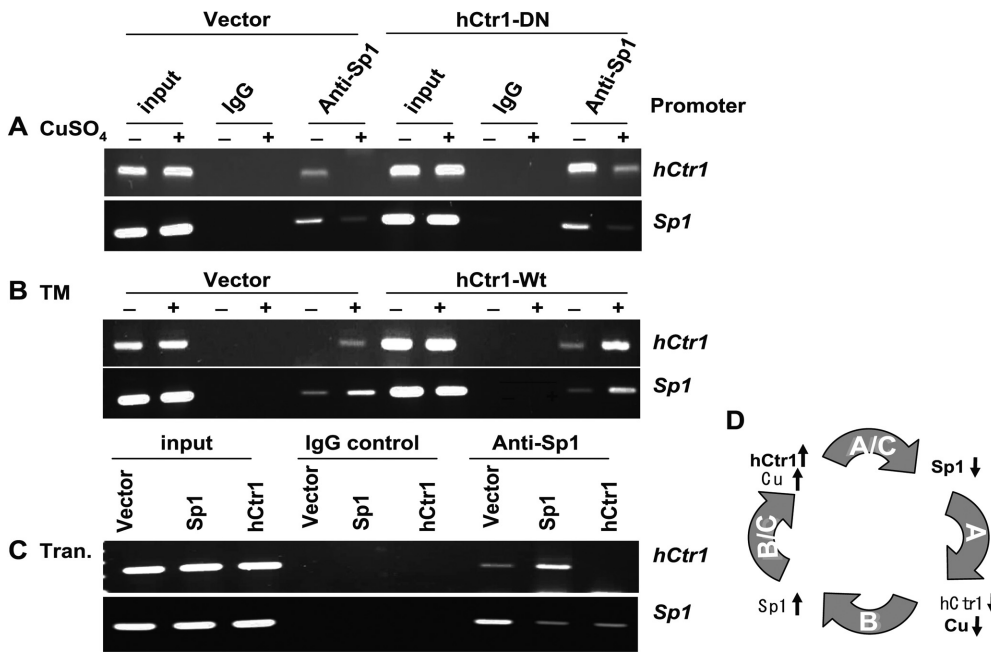


Fig. 3. Determinations of Sp1 Binding to the *hCtr1* and *Sp1* promoters under various treatments by the ChIP assay. A, vector-transferred SCLC or *hCtr1*-DN-transfected cells were treated with 100 μM CuSO_4 for 16 h followed by the ChIP assay of Sp1 binding to *hCtr1* and *Sp1* promoters as indicated. Input refers to total chromatin DNA before immunoprecipitation with anti-Sp1 antibody or nonimmune immunoglobulin IgG. B, the ChIP assay was performed in empty-vector- and *hCtr1*-wt transfected cells treated with or without 40 μM TM for 16 h. C, ChIP assay of Sp1 binding to the *Sp1* and *hCtr1* promoters in HEK293 cells transfected with the empty vector, *Sp1*-encoding, and *hCtr1*-encoding recombinants for 16 h as indicated. D, Schematic diagram showing the summary of results presented in Fig. 1A to C. Details can be found in Fig. 1I.

promoters in the empty vector- and *hCtr1*-wt-transfected cells (Fig. 3B), again demonstrating that up-regulation of *hCtr1* and *Sp1* expression under copper-depleted conditions is transcriptionally regulated.

To substantiate the transcriptional involvement of Sp1 in the regulation of both *Sp1* and *hCtr1*, we next investigated the effects of Sp1 and *hCtr1* overexpression on the binding of Sp1 to their promoters in HEK293 cells grown in the regular medium using a transfection approach. We found that Sp1 preferentially bound to the *hCtr1* promoter compared with the *Sp1* promoter in the *Sp1*-wt-transfected cells (Fig. 3C). These results are consistent with our previous observation that elevated Sp1 expression up-regulated *hCtr1* but down-regulated itself (Fig. 1F). In addition, overexpression of *hCtr1* diminished Sp1 binding to both the *hCtr1* and *Sp1* promoters (Fig. 3C), which is also consistent with the results showing that overexpression of *hCtr1* down-regulates both endo-*hCtr1* and *Sp1* expression (Fig. 1). These results, as summarized in Fig. 3D, not only support the many observations depicted in Fig. 1I but also indicate the transcriptional regulation of copper homeostasis by Sp1 transcriptional regulator.

Both the Zinc Finger Domain and Transactivation Domains of Sp1 Are Important for Sp1 Sensing of Copper Stress. Sp1 consists of a TAD that contains two serine/threonine-rich and glutamine-rich subdomains and a DNA-binding domain that contains three zinc fingers (ZFs). We previously found that the ZF domain in Sp1 is important for Sp1-mediated *hCtr1* expression under copper-depleted conditions (Song et al., 2008). To elucidate whether other domains are also involved in Sp1-mediated *hCtr1* expression and whether these domains are important for the *hCtr1*-mediated Sp1 self-regulation, we constructed several Sp1 deletion mutants encompassing various subdomains (Fig. 4B). These mutants Sp1 were transfected into HEK293 cells, and the transfected cells were treated with CuSO_4 . Alternatively, these mutants were cotransfected with *hCtr1*-wt recombinant. We envisioned that cotransfection with *hCtr1*-wt would increase copper uptake, much like cells treated with CuSO_4 . We used a probe that can

distinguish between exo-Sp1 and endo-Sp1 mRNA signals for the RPA (Fig. 4A).

The following results were obtained from these two sets of experiments: 1) high copper content suppresses the expression of endo-*hCtr1* and endo-Sp1 (Fig. 4, C and D, lanes 3), consistent with the results shown earlier (Song et al., 2008). 2) Overexpression of Sp1-wt up-regulates endo-*hCtr1* but down-regulates endo-Sp1 expression (Fig. 4, C and D, lanes 4), confirming the results shown in Fig. 1F. 3) Deletion of the three ZF in Sp1 (M3 mutant) suppresses the Sp1-mediated increased endo-*hCtr1* expression but decreased endo-Sp1 expression (Fig. 4, C and D, lanes 5). 4) Expression of the intact TAD neutralizes the effects of endo-Sp1 and endo-*hCtr1* expression by copper treatment (i.e., their expression levels are similar to those seen in the untransfected or vector-transfected controls) (Fig. 4, C and D, lanes 6). Thus, Sp1-TAD has a dominant-negative function in copper response. Deleting the Q-rich2 subdomain (mutant M8) abolishes the dominant-negative function of TAD; however, the Q-rich2 domain together with Sp1-DBD (M7) cannot confer the dominant-negative function. These results suggest that other subdomains in the TAD are required for the dominant-negative function. 5) Transfection of other mutants with truncated TAD (i.e., M8, M9, M10 and M13) failed to alter the expression of endo-*hCtr1* and endo-Sp1 (Fig. 4, C and D, lanes 8–11). We found that mutations that affected endo-*hCtr1* expression also affected endo-Sp1 expression, whereas those that did not affect endo-Sp1 expression had no effect on *hCtr1* expression. This striking concordance further confirms the inter-regulatory relationship among Sp1, *hCtr1*, and copper in the maintenance of copper homeostasis and supports the notion that Sp1-regulated *hCtr1* and Sp1 expression may involve the same functional domains.

Previous studies have demonstrated that whereas the ZF domain is involved in promoter recognition and the Q-rich2 subdomain of TAD is involved in Sp1-mediated transcription activation by cross-talk with basal transcription machinery (Gill et al., 1994). This Q-rich2 subdomain is also involved in

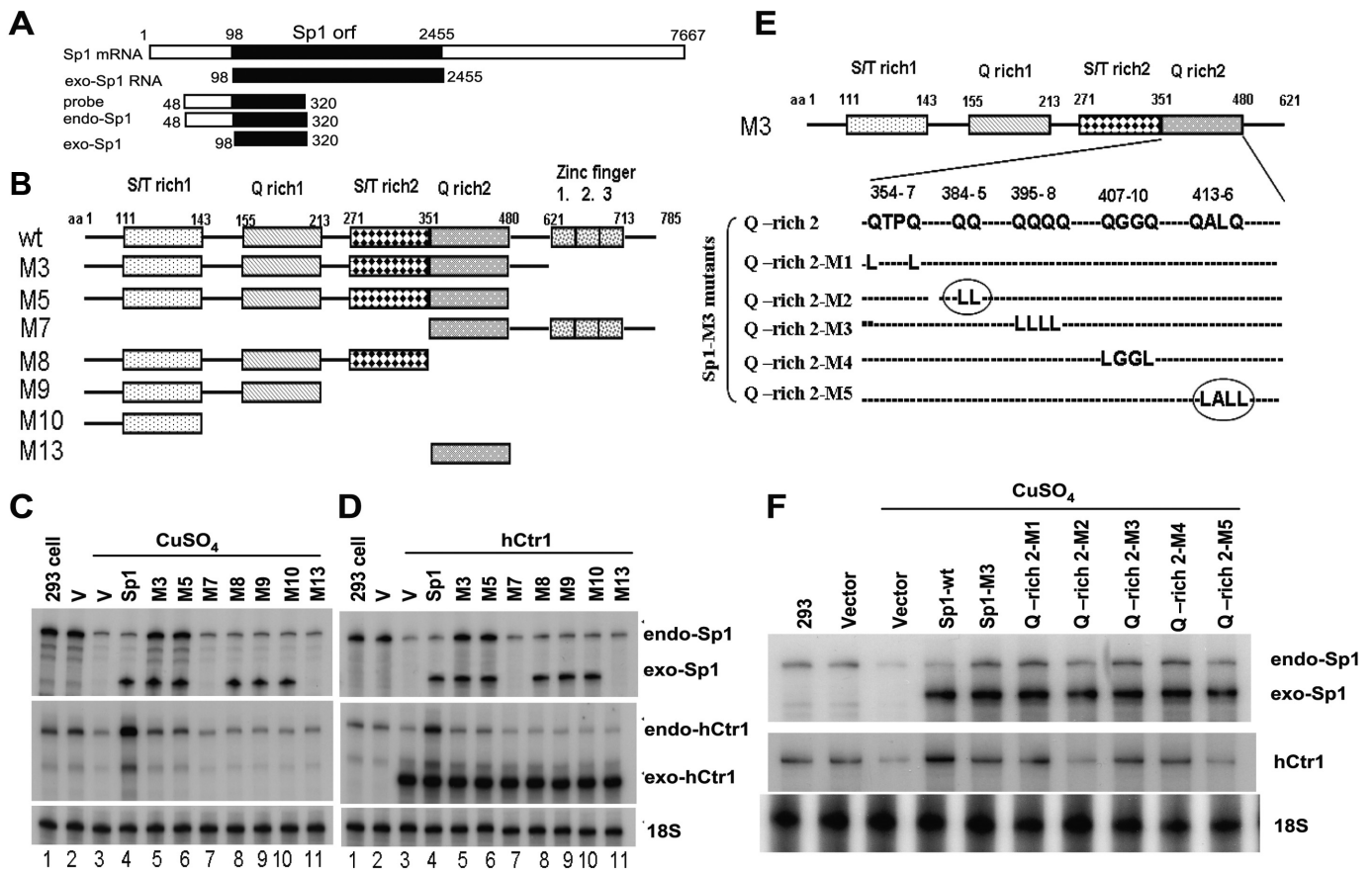


Fig. 4. The effects of various Sp1 domains and nucleotide residues on the copper-mediated expression of endo-hCtr1 and endo-Sp1. **A**, a schematic diagram showing the design of the hybridization probe used in RPA for measuring endo- and exo-Sp1 mRNA in transfection experiments. **B**, a schematic diagram showing the recombinant Sp1 encoding the wild-type (wt) and deleted mutants (M3–M13). Sp1-wt contains two serine/threonine-rich (S/T rich1 and S/T rich2) and two glutamine-rich (Q-rich) domains and three ZF domains. Numbers refer to the amino acid positions from the N terminus. **C**, effects of various truncated Sp1 on endo-Sp1 and endo-hCtr1 mRNA expression under copper-replete conditions. HEK293 cells were transfected with empty vector alone (V), Sp1-wt, or various Sp1 mutants (M3–M13) as indicated. Cells were treated with 100 μ M CuSO₄ for 16 h. Endo-hCtr1 mRNA, exo-Sp1 mRNA, and endo-Sp1 mRNA levels were determined by the RPA, using 18S RNA as the loading control. **D**, effects of various truncated Sp1 on endo-Sp1 and endo-hCtr1 mRNA expression under copper-replete conditions. The experimental design was similar to that shown in (C) except that hCtr1-wt recombinant was used in cotransfection into the cells to increase the copper contents. Note that lanes 7 (M7) and 11 (M13) did not show the exo-Sp1 signals because these mutants Sp1 do not contain the N-terminal sequence and therefore cannot be detected by the RPA probe. Instead, their expression was verified by Western blot analysis using anti-HA antibody (data not shown). **E**, a schematic diagram showing the mutated amino acids (Gln to Leu) in the Q-rich2 subdomain of Sp1-M3 recombinant. Numbers refer to the positions of amino acids. Circles refer to important amino acid residues for the copper-regulated Sp1 effects. **F**, effects of Q-rich2 mutations on the expression of endo-Sp1 and endo-hCtr1 under copper treatment. Recombinant constructs as shown in E were transfected into HEK293 cells. Cells were treated with 100 μ M CuSO₄ for 16 h and the expression levels of endo-Sp1, exo-Sp1, and endo-hCtr1 RNA levels were determined by RPA.

Sp1 oligomerization (Pascal and Tjian, 1991). To further elucidate the amino acid residues in the Q-rich2 subdomain that are involved in copper responsiveness, we introduced several mutations at the Q-rich2 subdomain (Fig. 4E). Transient transfection assay revealed that double-mutations (Gln to Leu) at two amino acid clusters 384/385 (M2 mutant) and 413/416 (M5 mutant) (Fig. 4E, circled) abolished the dominant-negative effects of TAD on the regulation of Sp1 and hCtr1 expression by copper (Fig. 4F). These results identified the roles of the Q-rich2 subdomain in the Sp1-mediated transcriptional regulation of Sp1 and hCtr1 expression by copper.

The Zinc Fingers of Sp1 are the Sensors of Copper Stress. To further characterize the copper-sensing mechanism of Sp1, we performed domain-swapping experiments by constructing fusions composed of the Sp1-ZF and the TAD from herpes simplex virus VP16 (TAD_{VP16}), DNA-binding domain from *Escherichia coli* LexA (DBD_{LexA}), and the TAD from Sp1 (TAD_{Sp1}). We avoided the commonly used GAL4 DBD because it contains a ZF sequence, whereas DBD_{LexA}

contains no metal binding motif. DBD_{LexA}-TAD_{VP16} or DBD_{LexA}-TAD_{Sp1} was cotransfected with the LexA reporter recombinant containing eight copies of LexA-binding sequences (LexA-Luc), whereas Sp1-ZF-TAD_{VP16} recombinants were cotransfected with hCtr1-Luc or Sp1-Luc. Neither copper nor TM treatments altered reporter expression levels when DBD_{LexA}-TAD_{VP16} and DBD_{LexA}-TAD_{Sp1} recombinants were used (Fig. 5). In contrast, CuSO₄ treatment down-regulated reporter expression in cells cotransfecting Sp1-ZF-VP16 with hCtr1-Luc or with Sp1-Luc, and TM treatment up-regulated reporter expression in these similarly transfected cells. These results collectively demonstrated that Sp1-ZF is the sensor of copper stresses in this surrogate assay system.

Copper Stress Does Not Seem to Induce Cytoplasmic Sequestration of Sp1. It has been demonstrated that the ZF domain is involved in nuclear targeting of Sp1 (Ito et al., 2010). Because we found that Sp1-ZF plays an important role in copper sensing that regulates Sp1 and hCtr1 expression, we investigated whether copper stresses may affect nuclear

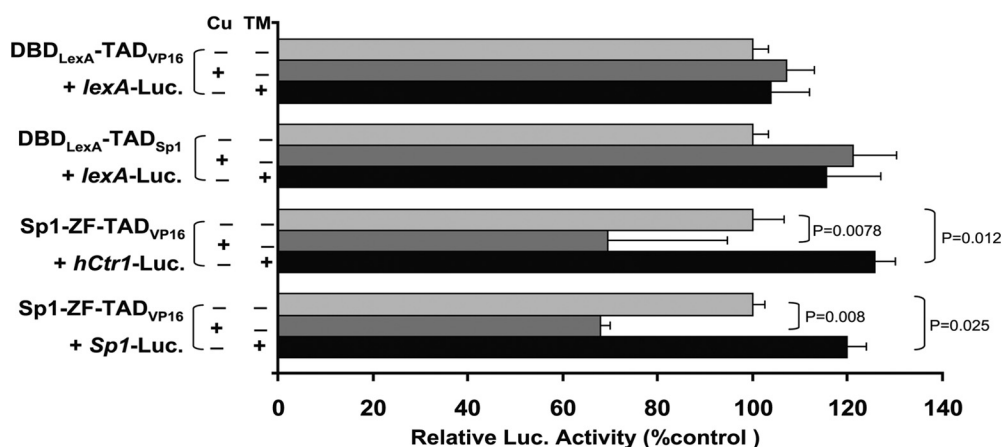


Fig. 5. Dissecting the roles of the Sp1 DBD and TAD in the regulation of copper stress-induced hCtr1 reporter Expression using a chimeric fusion approach. Recombinants encoding the chimeric transcription regulators containing DBD either from LexA (DBD_{LexA}) or from Sp1-ZF were fused with either VP16 (TAD_{VP16}) or TAD of Sp1 (TAD_{Sp1}). These recombinant DNA were cotransfected into HEK293 cells with their cognate luciferase reporters as indicated and treated with either 100 μ M CuSO₄ or 40 μ M TM for 18 h. The luciferase activities were assayed and calculated with reference to that in the reference reporter.

localization of Sp1. SCLC cells were treated with CuSO₄ or TM followed by immunocytochemical stainings with an anti-Sp1 antibody. We found that, although the overall staining intensities showing Sp1 expression levels were reduced in copper-treated cells but increased in TM-treated cells as consistent with the biochemical results shown in Fig. 1, B and E, respectively, no apparent redistribution of Sp1 between cytoplasmic and nuclear compartments was observed (Supplemental Fig. 1).

Sp3 Expression Is Also Regulated by Copper Stresses, but It Does Not Regulate hCtr1 Expression. Sp1 was the first described member of the Sp1/Krüppel-like factor (KLF) family, which currently consists of 8 Sp and 15 KLF members. Among the eight Sp proteins, Sp1 to Sp4 form a subgroup and Sp5 to Sp8 form another on the basis of their structural similarities (Kaczynski et al., 2003). This raises an important question about the roles of other Sp members in the regulation of hCtr1 expression, particularly Sp3, which is most closely related to Sp1 in terms of their structural similarities.

To determine whether Sp3 expression is also regulated by copper and whether its expression also modulates hCtr1 expression, we treated empty vector-, hCtr1-wt-, and hCtr1-DN-transfected cell lines with CuSO₄ or TM. Consistent with our previous report (Song et al., 2008) and those shown in Fig. 1, levels of Sp1 expression were increased in the TM-treated cells (Fig. 6A) but down-regulated in the CuSO₄-treated cells (Fig. 6B). Although the magnitudes of regulation here that reflected experimental variations were small, the results were very reproducible. In contrast to the expression patterns of Sp1, we found that the expression of Sp3 was down-regulated in these cell lines treated with TM (Fig. 6A) but was slightly up-regulated in cells treated with CuSO₄ (Fig. 6B). Again, the magnitudes of Sp3 regulation by copper stresses were not remarkable, but the results were very reproducible in all three cell lines (i.e., vector-, hCtr1-wt-, and hCtr1-DN-transfected cell lines). Moreover, transfections of expression recombinants encoding Sp2, Sp3, and Sp4 failed to up-regulate endo-hCtr1 expression in the hCtr1-wt-transfected cells, whereas transfection with Sp1 recombinant did (Fig. 6C). Transfections of recombinants encoding each of these Sp family members into hCtr1-DN-transfected cells did not alter expression levels of endo-hCtr1 levels, because these cells already express high levels of endo-hCtr1 (Fig. 6D). This is consistent with the interpretation that limited maximal capacity whereby hCtr1 expression can be regulated by copper stresses. Finally, knockdown of Sp3 expression using siRNA did not alter endo-hCtr1 expression in

vector- or hCtr1-wt-transfected cells treated with CuSO₄ (Fig. 6E). These results demonstrated that although Sp3 expression is regulated by copper stresses in a manner opposite that of Sp1, its expression does not affect hCtr1 expression under copper stress conditions. These results highlight the importance of Sp1 in the KLF family in the regulation of copper mammalian physiology.

Discussion

The Sp1-hCtr1-Copper Tripartite Model in Regulating Copper Homeostasis in Mammalian Cells. Extracellular copper exists in the oxidized form (Cu²⁺), which is reduced to Cu⁺ by membrane-associated cupric reductases, similar to ferric reductases 1 and 2 found in yeast (Georgatou et al., 1997), and the reduced Cu⁺ is primarily transported by the high-affinity Ctr1 to regulate cellular copper bioavailability. Mechanisms for regulation of hCtr1 expression in response to copper bioavailability are complex. In the present communication, we have constructed a tripartite regulation model in which the maintenance of copper homeostasis in human cells is regulated by an inter-regulatory loop consisting of copper, hCtr1, and Sp1 elements. Within this loop, these elements are mutually regulated among themselves, but each is also self-regulated. The demonstration that mammalian cells use Sp1 oscillation in mammalian copper homeostasis regulation is consistent with the multi-variant homeostatic regulatory principle: a regulator that regulates a self-regulatory regulator should also be self-regulated. Thus, this study reveals a previously undiscovered homeostatic regulation mechanism for the maintenance of intracellular copper budget in mammalian cells.

Our success in elucidating the inter-regulatory mechanism of mammalian copper homeostasis regulation lies in the use of the RPA, which is sensitive and reliable in measuring the hCtr1 mRNA expression levels. It is noteworthy that by proper probe design, it can simultaneously determine endo-transcript versus exo-transcript levels in the transfection assays. We showed that under copper-adequate conditions, elevated expression of Sp1 by transfection promotes preferential binding of Sp1 to hCtr1 promoter and up-regulates hCtr1 expression. We observed that up-regulation of hCtr1 and Sp1 expression under copper-depleted conditions is mediated by enhanced Sp1 binding to these promoters. The feedback suppression of hCtr1 and Sp1 expression under copper-replete conditions is also mediated by the diminished

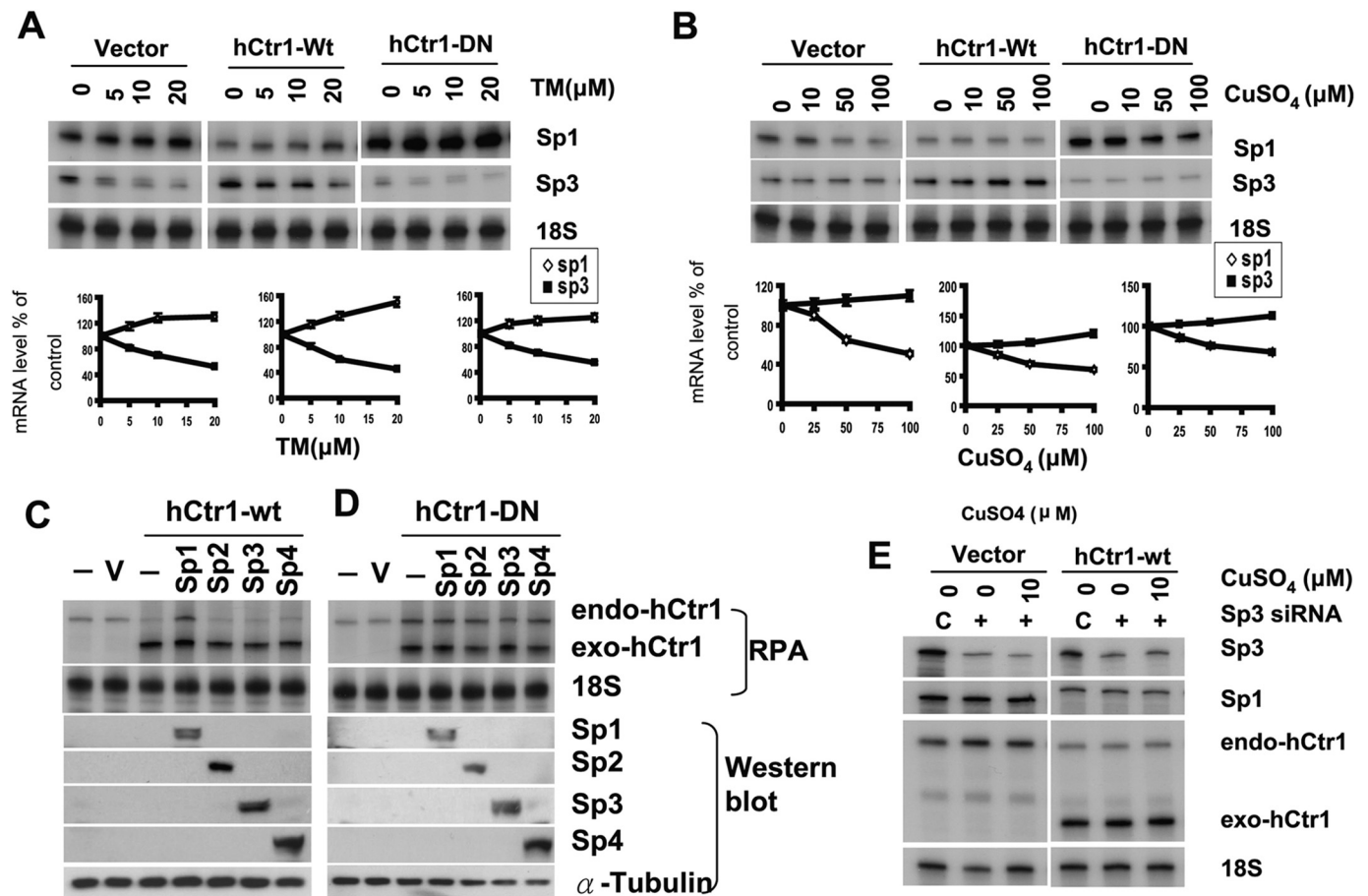


Fig. 6. Regulation of Sp1 family members by copper and TM and the effects of these members on hCtr1 expression. A, regulation of Sp1 and Sp3 expression by the treatments of TM using the concentrations as indicated in the three SCLC cell lines. Densitometric presentations of the levels of expression with reference to the untreated controls (as 100%) are correspondingly below. B, regulation of Sp1 and Sp3 by the treatment of different concentrations of CuSO_4 in the three SCLC cell lines. Corresponding quantitative results are shown below. C, up-regulation of endo-hCtr1 in hCtr1-wt-transfected cells by transfection with recombinant encoding Sp1 but not by those encoding Sp2, Sp3, or Sp4. Expression of endo-hCtr1 and exo-hCtr1 was determined by RPA using 18S RNA as a loading control, whereas expression of Sp1- Sp4 was determined by Western blot analysis. Probe design for differentiating between exo- and endo-hCtr1 mRNA was described previously (Liang et al., 2009) using a strategy similar to that described in Fig. 4A. D, overexpression of Sp1, Sp2, Sp3, and Sp4 by transfection did not alter the expression of endo-hCtr1 mRNA levels in hCtr1-DN-transfected cells. E, no effect on endo-Sp1 and endo-hCtr1 expression by knockdown of Sp3 expression with or without CuSO_4 treatments in the vector- and hCtr1-treated cells.

Sp1 binding to the promoters of these genes. These results strongly suggest that the differential promoter binding of Sp1 between hCtr1 and Sp1 promoters mediates the control mechanism of copper homeostasis in the mammalian system.

Copper homeostasis is evolutionarily conserved from yeasts to humans. Humans have one high-affinity copper transporter (hCtr1), whereas yeast has two (yCtr1 and yCtr3). Like hCtr1, expression of yCtr1 and yCtr3 is transcriptionally up-regulated under copper-depleted conditions but is down-regulated under copper-replete conditions. When copper is deficient, the transcription factor Mac1p binds to the metal-responsive elements located within the promoters of yCtr1 and yCtr3 and turns on the expression of these genes (Labbé et al., 1997; Jensen et al., 1998). Under copper-sufficient conditions, Mac1p dissociates from the promoters, resulting in the shutting down of yCtr1 and yCtr3 expression. The transcription factor Ace1 is then activated to induce the expression of genes encoding copper-chelating proteins (Cup1 and Crs5) and the antioxidant superoxide dismutase (Sod1) (Gralla et al., 1991; Gross et al., 2000) to protect cells from copper toxicities. Moreover, expression of *Drosophila mela-*

nogaster dCtr1B under copper-deficiency conditions is also regulated by promoter binding of transcription factor MTF1 (Selvaraj et al., 2005). Regulation of plant copper transporters *COPT1* and *COPT2* in *Arabidopsis thaliana* under copper-limiting conditions also involves the interactions of the transcription factor *SQUAMOSA*-promoter like binding protein 7 (SPL-7) with the promoters of these genes (Yamasaki et al., 2009; Penarrubia et al., 2010). In all cases, these transcription factors bind to the promoters and up-regulate the expression of their target genes under copper-deficient conditions, whereas under copper-replete conditions, these transcription factors dissociate from their promoters. Thus, the tripartite regulatory model may also apply to the regulation of copper homeostasis in these organisms; however, whether these copper-sensing transcription regulators are also regulated within the context of copper homeostasis has not been investigated.

Sp1 is a ubiquitous transcription factor that was previously considered as a regulator for housekeeping genes. The present study reveals a new role of Sp1 in the regulation of copper homeostasis. Of particular intrigue is the finding that

Sp1 expression is self-regulated through the hCtr1 intermediate. Several studies have demonstrated that Sp1 may enhance its transcriptional activities through post-translational modifications and/or by cross-talk with coregulators (Wierstra, 2008); we cannot rule out the possible involvements of these post-translational mechanisms in fine-tuning of Sp1 activity in regulating copper homeostasis.

Mechanisms for Copper Sensing by Sp1. Many transcription factors regulate the expression of copper transporters through their sensing of copper availability. For Ace1, excess copper promotes its DNA binding (Fürst et al., 1988). By contrast, for Mac1p and SPL-7 (Yamasaki et al., 2009), excess copper inhibits their DNA-binding activities, whereas reduced copper promotes binding activities. All these transcriptional regulators contain ZF modules that function as copper sensors in regulating their target genes. These findings suggest that the sensing mechanisms by ZFs in different transcription regulators are complex. In Sp1, each ZF domain consists of two cysteine and two histidine residues that are coordinated by one zinc molecule in a tetrahedral conformation. The finding that excess copper prevents Sp1 from binding to *Sp1* and *hCtr1* promoters can be readily explained in that excess copper may poison the ZF domain of Sp1 by displacing the bound zinc, resulting in conformational changes that compromise its DNA-binding activities at both promoters, leading to down-regulation of hCtr1 and Sp1 expression. This mechanism is consistent with that describing the effects of cadmium on Sp1's down-regulation of cadmium transporter encoded by *Zip8*, as reported previously (Aiba et al., 2008). Strikingly, we observed that Sp1 and hCtr1 expression is elevated under copper-depleted conditions through enhanced binding of Sp1 to their promoters. Although these results constitute the important part in the tripartite inter-regulatory mechanism of copper homeostasis regulation, given the complexity of the effects of copper on ZF-DNA interactions as mentioned, the underlying mechanism is currently unknown and requires further in-depth investigation. Although it has been reported that copper stress can affect zinc homeostasis and likewise that zinc can affect copper homeostasis (Hoffman et al., 1988), our preliminary results showed that interactions of Sp1 with its recognition of GC box cannot be simply explained by zinc content, because modulation of zinc levels failed to alter Sp1 binding specificity (Z. Liang and M. Kuo, unpublished data). Currently, we favor the hypothesis that conformational change in the ZF may also occur under copper-limiting conditions that enhance the stabilization of interactions between Sp1 and the *Sp1* and *hCtr1* promoters.

We observed that despite the fact that Sp3 also contains three ZFs and a TAD and is also regulated by copper availability, Sp3 expression does not regulate hCtr1 expression. These observations reflect promoter selectivity in gene regulation by the Sp1/KLF transcription factor family. How the bioavailable copper affects the transcriptional selectivity of Sp1/hCtr1/Sp3 remains to be investigated.

Our finding that the Q-rich2 subdomain within the Sp1-TAD is involved in Sp1-regulated *Sp1* and *hCtr1* expression by copper stress has added another aspect of complexity in the Sp1-hCtr1-copper homeostatic regulation. This Q-rich2 domain interacts with TAF_{II}110 in transcription factor IID, a core promoter recognition multiple protein complex in the basal transcriptional machinery of RNA polymerase II (Gill et al., 1994; Liu et al., 2009). How copper concentrations affect interactions between Sp1-TAD and the basal transcrip-

tional assembly, which as a whole contains more than 80 proteins, remains to be investigated. Taken together, our current study provides a new paradigm for the transcriptional regulation of copper homeostasis in the mammalian system.

Implications of Copper Metabolism Regulation by the Sp1-hCtr1-Copper Tripartite Model. The Sp1-hCtr1-copper inter-regulatory model described in this communication suggests that changes of any one component within this loop would result in either feedback or feed-forward to affect the expression of the other two. This model underscores the dynamic regulation mechanism for the maintenance of copper homeostasis. Accordingly, the magnitudes of Sp1 and hCtr1 regulation by copper imbalance depend upon the intrinsic (basal) expression levels of Sp1 and hCtr1 themselves and are not anticipated to be very high (Z. D. Liang, submitted).

Another example of this copper-related inter-regulatory relationship may be found in the human *prion* gene regulation. Prion is a copper-binding protein that is intimately associated with transmissible spongiform encephalopathies. Not only does copper regulate prion expression but also prion expression can affect copper metabolism (Kralovicova et al., 2009). Moreover, Bellingham et al. (2009) reported that Sp1 functions as a copper-sensing transcription factor that regulates *prion* gene expression. Recent bioinformatics from an analysis of 57 different species across the evolutionary tree estimated that the size of the copper proteome is generally less than 1% of the total proteome of an organism in both eukaryotes and prokaryotes (Andreini et al., 2008). It remains to be investigated whether many of these copper-binding proteins, such as prion, Sp1, and hCtr1, may be regulated by copper bioavailability.

Finally, the findings that Sp1 and Sp3 expression are regulated under copper-stressed conditions, although in opposite manners, expand the gene regulation profiling by copper homeostasis beyond the present study, because these transcriptional regulators are known to regulate a vast number of genes involved in cell growth, differentiation, apoptosis, and tumor development (Wierstra, 2008). In the recently developed ChIP-sequencing approach, the entire repertoire of Sp1-regulated genes under various copper stresses can be accessed. These studies eventually should provide a comprehensive picture for the global effect of gene regulation and resulting physiological consequences in mammalian copper physiology.

Acknowledgments

We thank Drs. Yien-Ming Kuo (University of California, San Francisco, CA), C. J. Ciudad, and Mark Ptashne for the reagents. We thank Michael Worley (Department of Scientific Publications, The University of Texas MD Anderson Cancer Center) for editing the manuscript.

Authorship Contributions

Participated in research design: Liang, Tsai, Savaraj, and Kuo.

Conducted experiments: Liang, Tsai, and Lee.

Performed data analysis: Liang, Tsai, and Kuo.

Wrote or contributed to the writing of the manuscript: Liang and Kuo.

References

- Aiba I, Hossain A, and Kuo MT (2008) Elevated GSH level increases cadmium resistance through down-regulation of Sp1-dependent expression of the cadmium transporter ZIP8. *Mol Pharmacol* 74:823–833.

- Andreini C, Banci L, Bertini I, and Rosato A (2008) Occurrence of copper proteins through the three domains of life: a bioinformatic approach. *J Proteome Res* **7**:209–216.
- Bellingham SA, Coleman LA, Masters CL, Camakaris J, and Hill AF (2009) Regulation of prion gene expression by transcription factors SP1 and metal transcription factor-1. *J Biol Chem* **284**:1291–1301.
- Chen HH, Song IS, Hossain A, Choi MK, Yamane Y, Liang ZD, Lu J, Wu LY, Siddik ZH, Klomp LW, et al. (2008) Elevated glutathione levels confer cellular sensitization to cisplatin toxicity by up-regulation of copper transporter hCtr1. *Mol Pharmacol* **74**:697–704.
- Chen HH, Yan JJ, Chen WC, Kuo MT, Lai YH, Lai WW, Liu HS, and Su WC (2011) Predictive and prognostic value of human copper transporter 1 (hCtr1) in patients with stage III non-small-cell lung cancer receiving first-line platinum-based doublet chemotherapy. *Lung Cancer* <http://dx.doi.org/10.1016/j.lungcan.2011.06.011>.
- Collins JF, Prohaska JR, and Knutson MD (2010) Metabolic crossroads of iron and copper. *Nutr Rev* **68**:133–147.
- Fürst P, Hu S, Hackett R, and Hamer D (1988) Copper activates metallothionein gene transcription by altering the conformation of a specific DNA binding protein. *Cell* **55**:705–717.
- Georgatsoou E, Mavrogiannis LA, Fragiadakis GS, and Alexandraki D (1997) The yeast Fre1p/Fre2p cupric reductases facilitate copper uptake and are regulated by the copper-modulated Mac1p activator. *J Biol Chem* **272**:13786–13792.
- Gill G, Pascal E, Tseng ZH, and Tjian R (1994) A glutamine-rich hydrophobic patch in transcription factor Sp1 contacts the dTAFII110 component of the Drosophila TFIID complex and mediates transcriptional activation. *Proc Natl Acad Sci USA* **91**:192–196.
- Gralla EB, Thiele DJ, Silar P, and Valentine JS (1991) ACE1, a copper-dependent transcription factor, activates expression of the yeast copper, zinc superoxide dismutase gene. *Proc Natl Acad Sci USA* **88**:8558–8562.
- Gross C, Kelleher M, Iyer VR, Brown PO, and Winge DR (2000) Identification of the copper regulon in *Saccharomyces cerevisiae* by DNA microarrays. *J Biol Chem* **275**:32310–32316.
- Hoffman HN 2nd, Phyllyk RL, and Fleming CR (1988) Zinc-induced copper deficiency. *Gastroenterology* **94**:508–512.
- Howell SB, Safaei R, Larson CA, and Sailor MJ (2010) Copper transporters and the cellular pharmacology of the platinum-containing cancer drugs. *Mol Pharmacol* **77**:887–894.
- Ishida S, Lee J, Thiele DJ, and Herskowitz I (2002) Uptake of the anticancer drug cisplatin mediated by the copper transporter Ctr1 in yeast and mammals. *Proc Natl Acad Sci USA* **99**:14298–14302.
- Ishida S, McCormick F, Smith-McCune K, and Hanahan D (2010) Enhancing tumor-specific uptake of the anticancer drug cisplatin with a copper chelator. *Cancer Cell* **17**:574–583.
- Ito T, Kitamura H, Uwatoko C, Azumano M, Itoh K, and Kuwahara J (2010) Interaction of Sp1 zinc finger with transport factor in the nuclear localization of transcription factor Sp1. *Biochem Biophys Res Commun* **403**:161–166.
- Jensen LT, Posewitz MC, Srinivasan C, and Winge DR (1998) Mapping of the DNA binding domain of the copper-responsive transcription factor Mac1 from *Saccharomyces cerevisiae*. *J Biol Chem* **273**:23805–23811.
- Kaczynski J, Cook T, and Urrutia R (2003) Sp1- and Krüppel-like transcription factors. *Genome Biol* **4**:206.
- Kim BE, Nevitt T, and Thiele DJ (2008) Mechanisms for copper acquisition, distribution and regulation. *Nat Chem Biol* **4**:176–185.
- Kralovicova S, Fontaine SN, Alderton A, Alderman J, Ragnarsdottir KV, Collins SJ, and Brown DR (2009) The effects of prion protein expression on metal metabolism. *Mol Cell Neurosci* **41**:135–147.
- Kuo MT, Chen HH, Song IS, Savaraj N, and Ishikawa T (2007) The roles of copper transporters in cisplatin resistance. *Cancer Metastasis Rev* **26**:71–83.
- Kuo YM, Zhou B, Cosco D, and Gitschier J (2001) The copper transporter CTR1 provides an essential function in mammalian embryonic development. *Proc Natl Acad Sci USA* **98**:6836–6841.
- Labbé S, Zhu Z, and Thiele DJ (1997) Copper-specific transcriptional repression of yeast genes encoding critical components in the copper transport pathway. *J Biol Chem* **272**:15951–15958.
- Liang ZD, Stockton D, Savaraj N, and Tien Kuo M (2009) Mechanistic comparison of human high-affinity copper transporter 1-mediated transport between copper ion and cisplatin. *Mol Pharmacol* **76**:843–853.
- Liu WL, Coleman RA, Ma E, Grob P, Yang JL, Zhang Y, Dailey G, Nogales E, and Tjian R (2009) Structures of three distinct activator-TFIID complexes. *Genes Dev* **23**:1510–1521.
- Molloy SA and Kaplan JH (2009) Copper-dependent recycling of hCTR1, the human high affinity copper transporter. *J Biol Chem* **284**:29704–29713.
- Nicolás M, Noé V, Jensen KB, and Ciudad CJ (2001) Cloning and characterization of the 5'-flanking region of the human transcription factor Sp1 gene. *J Biol Chem* **276**:22126–22132.
- Nose Y, Wood LK, Kim BE, Prohaska JR, Fry RS, Spears JW, and Thiele DJ (2010) Ctr1 is an apical copper transporter in mammalian intestinal epithelial cells in vivo that is controlled at the level of protein stability. *J Biol Chem* **285**:32385–32392.
- Ooi CE, Rabinovich E, Dancis A, Bonifacino JS, and Klausner RD (1996) Copper-dependent degradation of the *Saccharomyces cerevisiae* plasma membrane copper transporter Ctr1p in the apparent absence of endocytosis. *EMBO J* **15**:3515–3523.
- Pascal E and Tjian R (1991) Different activation domains of Sp1 govern formation of multimers and mediate transcriptional synergism. *Genes Dev* **5**:1646–1656.
- Peñarrubia L, Andrés-Colás N, Moreno J, and Puig S (2010) Regulation of copper transport in Arabidopsis thaliana: a biochemical oscillator? *J Biol Inorg Chem* **15**:29–36.
- Petris MJ, Smith K, Lee J, and Thiele DJ (2003) Copper-stimulated endocytosis and degradation of the human copper transporter, hCtr1. *J Biol Chem* **278**:9639–9646.
- Selvaraj A, Balamurugan K, Yepiskoposyan H, Zhou H, Egli D, Georgiev O, Thiele DJ, and Schaffner W (2005) Metal-responsive transcription factor (MTF-1) handles both extremes, copper load and copper starvation, by activating different genes. *Genes Dev* **19**:891–896.
- Song IS, Chen HH, Aiba I, Hossain A, Liang ZD, Klomp LW, and Kuo MT (2008) Transcription factor Sp1 plays an important role in the regulation of copper homeostasis in mammalian cells. *Mol Pharmacol* **74**:705–713.
- Song IS, Savaraj N, Siddik ZH, Liu P, Wei Y, Wu CJ, and Kuo MT (2004) Role of human copper transporter Ctr1 in the transport of platinum-based antitumor agents in cisplatin-sensitive and cisplatin-resistant cells. *Mol Cancer Ther* **3**:1543–1549.
- Su W, Jackson S, Tjian R, and Echols H (1991) DNA looping between sites for transcriptional activation: self-association of DNA-bound Sp1. *Genes Dev* **5**:820–826.
- Tsai WB, Aiba I, Lee SY, Feun L, Savaraj N, and Kuo MT (2009) Resistance to arginine deiminase treatment in melanoma cells is associated with induced argininosuccinate synthetase expression involving c-Myc/HIF-1 α /Sp4. *Mol Cancer Ther* **8**:3223–3233.
- Wierstra I (2008) Sp1: emerging roles—beyond constitutive activation of TATA-less housekeeping genes. *Biochem Biophys Res Commun* **372**:1–13.
- Yamasaki H, Hayashi M, Fukazawa M, Kobayashi Y, and Shikanai T (2009) SQUAMOSA promoter binding protein-like7 is a central regulator for copper homeostasis in Arabidopsis. *Plant Cell* **21**:347–361.

Address correspondence to: Dr. Macus Tien Kuo, Department of Molecular Pathology, Unit 951, Room 2SCR4.3025, The University of Texas MD Anderson Cancer Center, 7435 Fannin Blvd., Houston, TX 77054. E-mail: tkuo@mdanderson.org
