

# Genetic variation in strigolactone production and tillering in rice and its effect on *Striga hermonthica* infection

Muhammad Jamil · Tatsiana Charnikhova ·  
Benyamin Houshyani · Aad van Ast ·  
Harro J. Bouwmeester

Received: 9 August 2011 / Accepted: 5 September 2011 / Published online: 25 September 2011  
© The Author(s) 2011. This article is published with open access at Springerlink.com

**Abstract** Tillering in cereals is a complex process in the regulation of which also signals from the roots in the form of strigolactones play an important role. The strigolactones are signalling molecules that are secreted into the rhizosphere where they act as germination stimulants for root parasitic plants and hyphal branching factors for arbuscular mycorrhizal fungi. On the other hand, they are also transported from the roots to the shoot where they inhibit tillering or branching. In the present study, the genetic variation in strigolactone production and tillering phenotype was studied in twenty rice varieties collected from all over the world and correlated with *S. hermonthica* infection. Rice cultivars like IAC 165, IAC 1246, Gangweondo and Kinko produced high amounts of the strigolactones orobanchol, 2'-epi-5-deoxystrigol and three methoxy-5-deoxystrigol isomers and displayed low amounts of tillers. These varieties induced high *S. hermonthica* germination,

attachment, emergence as well as dry biomass. In contrast, rice cultivars such as Super Basmati, TN 1, Anakila and Agee displayed high tillering in combination with low production of the aforementioned strigolactones. These varieties induced only low *S. hermonthica* germination, attachment, emergence and dry biomass. Statistical analysis across all the varieties confirmed a positive correlation between strigolactone production and *S. hermonthica* infection and a negative relationship with tillering. These results show that genetic variation in tillering capacity is the result of genetic variation in strigolactone production and hence could be a helpful tool in selecting rice cultivars that are less susceptible to *S. hermonthica* infection.

**Keywords** Rice · Strigolactones · *Striga* · Tillering

## Abbreviations

UPLC	Ultra performance liquid chromatography
MS	Mass spectrometry
MRM	Multiple reaction monitoring
AM	Arbuscular mycorrhizal
M	Molar
MCP	Monte Carlo permutation

**Electronic supplementary material** The online version of this article (doi:10.1007/s00425-011-1520-y) contains supplementary material, which is available to authorized users.

M. Jamil · T. Charnikhova · B. Houshyani  
Laboratory of Plant Physiology, Wageningen University,  
Wageningen, The Netherlands

A. van Ast  
Centre for Crop Systems Analysis (CCSA), Crop and Weed  
Ecology Group, Wageningen University, Wageningen,  
The Netherlands

H. J. Bouwmeester (✉)  
Laboratory of Plant Physiology, Wageningen University,  
Droevendaalsesteeg 1, 6708 PB Wageningen, The Netherlands  
e-mail: harro.bouwmeester@wur.nl

H. J. Bouwmeester  
Centre for Biosystems Genomics, Wageningen, The Netherlands

## Introduction

A tiller is a specialized grain-bearing stem that sprouts from the base of plant species in the *Poaceae*. Tillering is one of the most important agronomic traits in poaceous crops and plays a major role in determining plant architecture and grain yield (Wu et al. 1998). Tillering (and branching in dicotyledonous crops) is a complex process that involves the fine-tuned, coordinated expression of

many genes (Ongaro and Leyser 2007) and is regulated by the interaction of genetic, hormonal and environmental cues (Ward and Leyser 2004; Garba et al. 2007; Kim et al. 2010a, b). Initially, two classes of hormones—auxins and cytokinins—have long been assumed to control tillering and shoot branching (Leyser 2003; Hayward et al. 2009). But recently a novel class of plant hormones, the strigolactones, was identified to also be involved in the regulation of above-ground plant architecture by inhibiting tiller production/shoot branching (Gomez-Roldan et al. 2008; Crawford et al. 2010; Umehara et al. 2010). The production of strigolactones is particularly strongly up-regulated under low-phosphate conditions (Yoenyama et al. 2007; Jamil et al. 2011a). Under phosphorus deficiency, the modification in plant architecture by strigolactones (reduced tillering/shoot branching) is proposed to be an adoptive strategy to these growth-limiting conditions (Umehara et al. 2010; Kohlen et al. 2011a). In addition, there is increasing evidence that under phosphorus limitation, strigolactones also play a role in the adaptation of root architecture to better cope with this nutrient limitation (Koltai et al. 2010; Kapulnik et al. 2011; Ruyter-Spira et al. 2011). Another adaptation to improve uptake of mineral nutrients in which strigolactones play a key role—but now not as plant hormone but as rhizosphere signalling molecule—is the stimulation of the symbiotic interaction with arbuscular mycorrhizal (AM) fungi (Akiyama et al. 2005). The strigolactones act as a hyphal branching factor for AM fungi and hence stimulate the development of a symbiotic relation (Akiyama et al. 2005). The AM fungi play an important role in providing mineral nutrients, especially phosphorus, to more than 80% of land plant species (Harrison 2005; Akiyama and Hayashi 2006; Bouwmeester et al. 2007).

However, the strigolactones have a second rhizosphere signalling role. They also act as germination stimulants for seeds of root parasitic plants of the *Striga*, *Orobanche* and *Phelipanche* genera, resulting in a parasitic interaction between host and parasite (Bouwmeester et al. 2003; Xie et al. 2010). The seeds of these parasitic plants will only germinate after perceiving the germination stimulant from their host (Bouwmeester et al. 2003; Yoneyama et al. 2010). After germination, the parasite attaches and penetrates the host root by a specialized feeding structure, the haustorium (Lynn and Chang 1990; Estabrook and Yoder 1998; Yoder 2001). The parasitic plant grows underground for 4 to 7 weeks prior to emergence and utilizes host water, nutrients and photosynthate. Much of the damage to the host occurs already at this stage. About 20–80% yield losses or even complete crop failure can occur due to this parasitism.

The triple role of strigolactones in underground communication between host plants, AM fungi and parasitic plants, and the regulation of tillering/branching raises a

number of questions. One of these is if the tillering/branching phenotype is indicative of the production of strigolactones and their secretion into the rhizosphere and whether then the tillering phenotype is also an indication of the plant's susceptibility to root parasitic plant infection. If this is the case, screening of cultivars for their tillering/branching phenotype could be an easy tool for breeders to select lines with better parasitic plant resistance. In the present study we applied this question to rice with the aims to correlate rice tillering with strigolactone production and to link this feature with *S. hermonthica* infection in a range of rice cultivars from all over the world.

## Materials and methods

### Plant material

In a first study, about 50 rice cultivars collected from different areas of the world were studied for strigolactone production and tillering capacity. Out of these 50 rice cultivars, 20 rice cultivars were selected for further experiments based on the variation in strigolactone production, tillering and *S. hermonthica* germination, attachment and emergence. The details of the selected 20 rice cultivars are given in Table 1. The rice cultivars represent different origins of the world, especially Africa and Asia and represent *Oryza japonica*, *Oryza indica* and *Oryza javanica* backgrounds. All the experiments were conducted in a completely randomized design with three replicates under controlled greenhouse conditions (28°C/25°C with 10 h (day)/14 h (night) photoperiod and 70% relative humidity) or in a climate chamber (28°C/25°C with 10 h (day)/14 h (night) photoperiod (450  $\mu\text{M m}^{-2} \text{s}^{-1}$ ) and 70% relative humidity) in Wageningen, The Netherlands.

### Strigolactone analysis

Strigolactones were analysed in root exudates as well as in root extracts. The seeds of all cultivars were surface sterilized with 2% sodium hypochlorite and placed to germinate in an incubator at 30°C for 48 h. About 1.5 L silver sand was added to a 3.0 L plastic pot and 15 pre-germinated seeds of each cultivar, in three replicates, were planted in an individual pot and grown in the climate chamber. During the 2nd week, thinning was done to ten plants in each pot. Each pot was supplied with 250 mL half-strength modified Hoagland's nutrient solution with 100% phosphorus (P; 0.4 mM) for 4 weeks (at 48 h interval). In week 5, 3 L phosphorus deficient nutrient solution was added on top of the sand and allowed to drain from each pot. The phosphorus deficiency was maintained for 1 week, after which another 3 L phosphorus-deficient

**Table 1** List of rice cultivars screened for tillering, strigolactones production and *Striga hermonthica* infection

S. No.	Variety name	Rice species	Group	Seed source	Country of origin	Tall/dwarf	Tillering (No. plant <sup>-1</sup> )	Upland/lowland
1	IAC 165	<i>Oryza sativa</i>	Japonica	University of Sheffield	Brazil	Tall	6	Upland
2	IAC 1246	<i>Oryza sativa</i>	Japonica	IRRI Philippines	Brazil	Tall	6	upland
3	Gangweondo	<i>Oryza sativa</i>	Japonica	IRRI Philippines	South Korea	Tall	7	No information
4	Kinko	<i>Oryza sativa</i>	Indica	IRRI Philippines	Guinea	Tall	7	No information
5	Dullo	<i>Oryza sativa</i>	Indica	IRRI Philippines	India	Tall	8	No information
6	Binagimbing	<i>Oryza sativa</i>	Indica	IRRI Philippines	Philippines	Intermediate	8	Upland
7	Sonkanoir	<i>Oryza sativa</i>	Indica	IRRI Philippines	Liberia	Intermediate	8	No information
8	20 D	<i>Oryza sativa</i>	Indica	IRRI Philippines	Liberia	Intermediate	9	Upland
9	TOS 7556	<i>Oryza sativa</i>	Javanica (Tropical japonica)	IRRI Philippines	Ivory Coast	Intermediate	8	Upland
10	Kairyo-HM	<i>Oryza sativa</i>	Japonica	IRRI Philippines	Japan	Intermediate	9	No information
11	PI 160641	<i>Oryza sativa</i>	Indica	IRRI Philippines	China	Intermediate	11	No information
12	Koirao Baleo	<i>Oryza glaberrima</i>	– <sup>a</sup>	IRRI Philippines	Mali	Intermediate	11	Upland
13	Bhasmanik	<i>Oryza sativa</i>	Indica	IRRI Philippines	India	Intermediate	12	No information
14	Shuang-Chiang	<i>Oryza sativa</i>	Indica	IRRI Philippines	Taiwan	Intermediate	12	No information
15	Peh-Kuh	<i>Oryza sativa</i>	Indica	IRRI Philippines	Taiwan	Dwarf	13	No information
16	Tattare	<i>Oryza glaberrima</i>	– <sup>a</sup>	IRRI Philippines	Nigeria	Dwarf	12	No information
17	Agee	<i>Oryza glaberrima</i>	– <sup>a</sup>	IRRI Philippines	Ghana	Dwarf	12	No information
18	Anakila	<i>Oryza glaberrima</i>	– <sup>a</sup>	IRRI Philippines	Mali	Dwarf	14	No information
19	TN 1	<i>Oryza sativa</i>	Indica	IRRI Philippines	Taiwan	Dwarf	16	Intermediate
20	Super Basmati	<i>Oryza sativa</i>	Indica	NARC, Pakistan	Pakistan	Dwarf	18	Lowland

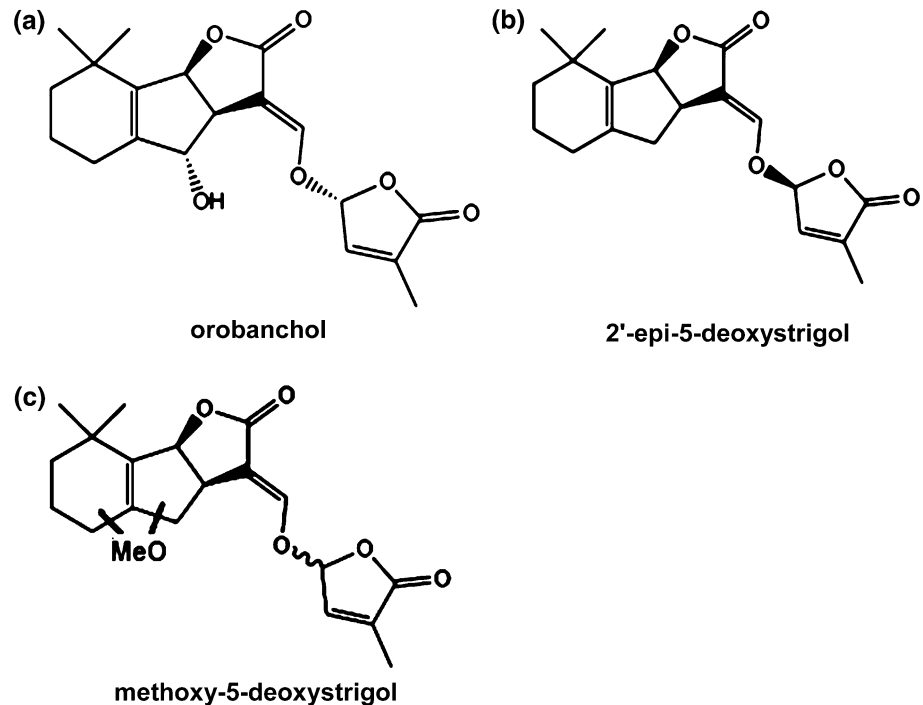
<sup>a</sup> Japonica/Indica/Javanica are different eco-geographic groupings of *Oryza sativa* only, not applied to *Oryza glaberrima*

nutrient solution was applied and drained away freely to remove accumulated strigolactones from the rhizosphere. After 48 h, root exudates were collected from the rhizosphere of each pot by adding and draining 1.5 L phosphorus-deficient nutrient solution through each pot. The collected solutions were passed through SPE C18-Fast columns (500 mg/3 mL) and the strigolactones eluted with 6 mL 100% acetone. Various strigolactones such as orobanchol, 2'-epi-5-deoxystrigol and three methoxy-5-deoxystrigol isomers (Fig. 1) were identified and quantified using ultra performance liquid chromatography tandem mass

spectrometry (UPLC–MS/MS) (Waters, Milford MA USA) as described previously (Jamil et al. 2011a).

Strigolactones were also measured in root extracts of the first four highest strigolactone producing and last four lowest producing rice cultivars. Hereto, root tissues from these cultivars were frozen with liquid nitrogen and ground into powder. About 500 mg of ground powder of each sample was taken in a pre-cooled glass vial. Then 4 mL ethyl acetate and 0.02 nmol of D<sub>6</sub>-2'-epi-5-deoxystrigol (provided by T. Asami, Department of Applied Biological Chemistry, The University of Tokyo, Japan) as internal

**Fig. 1** Chemical structure of orobanchol (a), 2'-epi-5-deoxystrigol (b) and methoxy-5-deoxystrigol isomers 1–3 (position and stereochemistry unknown) (c) in the root exudates and root extracts of rice cultivars. (Adapted from Jamil et al. 2011b)



standard were added and the samples sonicated for 10 min. After sonification and vortexing, the samples were centrifuged at 2,000g for 10 min. The supernatant was collected carefully and added to a new glass vial. The strigolactones collected in this way were identified and quantified through ultra performance liquid chromatography coupled to tandem mass spectrometry (UPLC–MS/MS) using multiple reaction monitoring (MRM) as described by Jamil et al. (2011a). The retention times and mass transitions of strigolactone standards orobanchol and 2'-epi-5-deoxystrigol (provided by Koichi Yoneyama, Weed Science Center, Utsunomiya University, Japan) and 5-deoxystrigol (provided by Kohki Akiyama, Osaka Prefecture University, Japan) were used to identify rice strigolactones. Strigolactones putatively identified as methoxy-5-deoxystrigol isomers 1–3 (Jamil et al. 2011b; C. Cardoso, WUR, personal communication) were also identified by using MRM transitions (channels)  $m/z$  361 > 247 and 361 > 97.

#### Tillering diversity among rice cultivars

To determine the tillering diversity, the seeds of each rice cultivar were surface sterilized with 0.2% sodium hypochlorite and put to germinate in separate sealed Petri dish in an incubator at 30°C for 48 h. One pre-germinated seed of each rice cultivar was planted in the centre of a 1-L plastic pot, filled with 800 mL silver sand. The rice seedlings in this completely randomized design experiment with three replicates were allowed to grow under green house-controlled conditions as

mentioned above. Half strength Hoagland's nutrients solution was applied (250 mL at 48 h interval) with 100% phosphorus (0.4 mM) and then after 1 week the dose of P reduced to 20% (0.08 mM) to induce strigolactone production. To determine number of tillers per plant, the plants were grown for about 8 weeks (58 days). The tillers per plant of each cultivar were counted manually from each pot.

#### *Striga hermonthica* germination bioassays

Root exudates obtained from different rice cultivars were assessed for germination stimulatory activity by germination bioassays with seeds of *Striga hermonthica*. Surface-sterilization of *S. hermonthica* seeds was done using 25 mL of 2% sodium hypochlorite with 0.4% of Tween-20 for 5 min. Subsequently, seeds were thoroughly rinsed three times with 10-min intervals, using sterile demineralized water, through a Buchner funnel. The sterile seeds were air dried for 60 min. Approximately 50–100 seeds were then evenly spread on 9-mm diameter glass fibre filter paper discs (Sartorius, Goettingen Germany). These discs were placed in 9-cm diameter Petri-dishes (12 discs per Petri-dish) on filter paper (Whatman, Maidstone, UK) moistened with 3 mL demineralized water. For preconditioning, the Petri-dishes were sealed with parafilm, wrapped in aluminium foil and placed in an incubator in darkness at 30°C for 10 days.

After 10 days, the discs with preconditioned seeds were allowed to dry for 50 min in a laminar flow cabinet to

evaporate surplus moisture. The discs were then placed in another Petri-dish (six per Petri-dish) containing a filter paper ring (outer diameter 9 cm, inner diameter 8 cm) moistened with 0.9 mL water. The samples to be tested were applied (50  $\mu$ L per disc) in three replicates after replacement of the acetone in the samples by water through vacuum centrifugation. GR24 (3.3  $\mu$ M) was used as a positive control and water as a negative control in each germination assays. Seeds were again incubated at 30°C in darkness for 48 h and germination (seeds with radicle protruding through the seed coat) was scored using a binocular microscope (Matusova et al. 2005).

#### *Striga hermonthica* attachment

The response of high and low tillering cultivars for *S. hermonthica* attachment was assessed in a pot study. All rice cultivars were grown in a completely randomized design with three replicates. A perforated plastic sheet was put in the bottom of 1.5 L plastic pot. After addition of 100 mL *S. hermonthica* free silver sand on the bottom of the pot, a mixture of 500 mL sand with 25 mg of *S. hermonthica* seeds was placed on top of the *Striga*-free layer. One pre-germinated, seed of each rice cultivar was planted in the centre of each pot and covered by another 100 mL of *S. hermonthica* free sand. During the first week, half-strength modified Hoagland's nutrient solution with 100% P was applied (250 mL at 48 h interval). Subsequently, the phosphorus dose was reduced to 20% and 250 mL of this nutrient solution was applied at 48-h intervals. The plants were grown for 8 weeks under greenhouse conditions as mentioned above. After 8 weeks, sand was removed carefully by washing the root systems of the rice plants and *S. hermonthica* attachment counted under a binocular.

#### *Striga hermonthica* emergence

*S. hermonthica* emergence and dry biomass production were assessed in a separate experiment. A mixture of soil (Lentse Potgrond, Katwijk, The Netherland) and silver sand in a ratio of 1:1 (w/w) was prepared. About 200 mL of this medium without *Striga* seed was added in the bottom of a 1.5 L plastic pot and then 500 mL of this medium, mixed with 25 mg *S. hermonthica* seeds was added. Finally, 100 mL of above-mentioned medium without *Striga* seed was added on top. A pre-germinated seed of each cultivar was planted in the centre of each pot. The plants were grown under the greenhouse conditions described above for 12 weeks. After counting *S. hermonthica* emergence the *Striga* plants were up-rooted, oven dried at 70°C for 72 h and then weighed.

#### Statistical analysis

The data on *S. hermonthica* germination, attachment, emergence and dry biomass were analysed statistically by ANOVA in conjunction with LSD Posthoc test using Genstat 9.2 (VSN Int. Ltd., Hemel, Hempstead, UK). The relationship between various strigolactones and *S. hermonthica* germination and tillering was analysed by correlation analysis using R. For a multivariate approach, the average strigolactone peak areas of the rice cultivars were symmetrically scaled by the standard deviation (SD) of the samples and the individual strigolactones. The SD-scaled data were used (without log transformation) in redundancy analysis (RDA), to examine whether the variation in the strigolactones explains the variation in average infection parameters of the rice genotypes. We used a forward selection approach to identify the strigolactones with the highest explanatory power. A Monte Carlo permutation (MCP) test was used to assess the statistical significance of the ordination axes of the canonical analysis and of the environmental variables. All the multivariate data analysis was performed in CANOCO 4.5 for windows (ter Braak 1988).

## Results

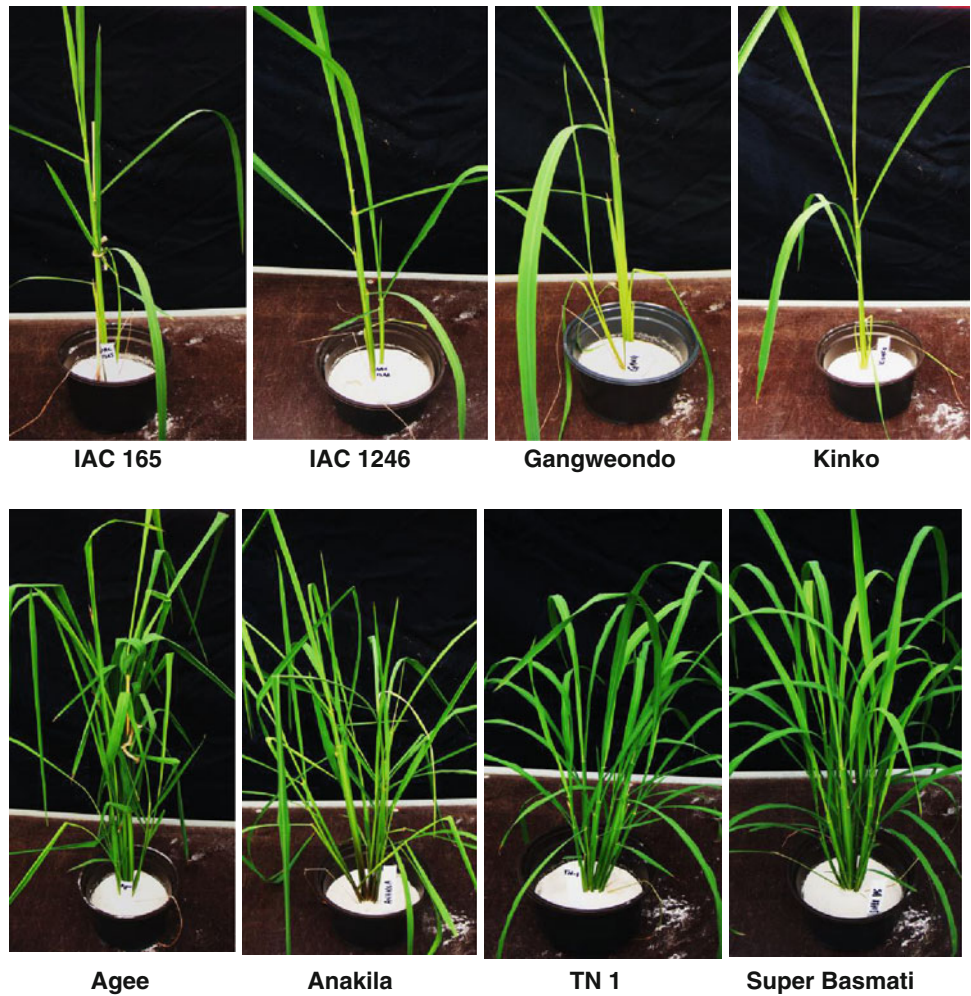
### Tillering

The rice cultivars differed strongly with regard to their tillering phenotype (Fig. 2). The average number of tillers varied from 6 to 18 tillers per plant (Fig. 3; Suppl. Table S1). The rice cultivars Super Basmati, TN 1, Agee, and Anakila showed the highest tillering (13–18 tillers per plant) while rice cultivars such as IAC 165, IAC 1246, Gangweondo and Kinko displayed much lower number of tillers per plant (Figs. 2, 3). The rest of the cultivars were in the range of 8–12 tillers per plant (Suppl. Table S1).

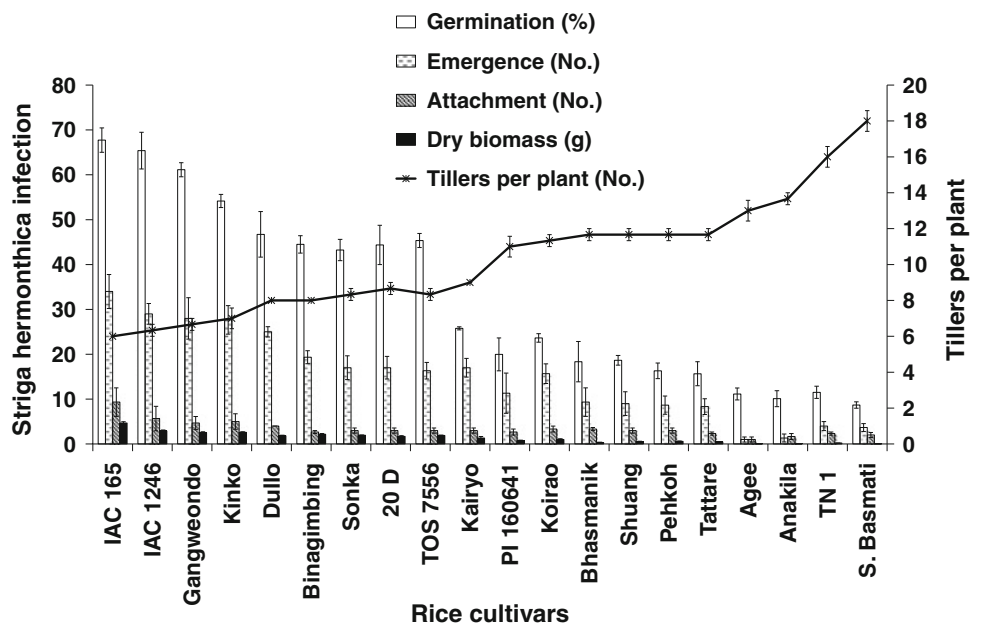
### *Striga hermonthica* infection

The exudates of low tillering rice cultivars IAC 165, IAC 1246, Gangweondo, and Kinko induced the highest *S. hermonthica* germination rate ( $\geq 50\%$ ), while high-tillering rice cultivars like Super Basmati, TN 1, Anakila and Agee induced significantly less germination of *S. hermonthica*. Bhasmanik, Shuang, Pehkuh, Tattare were the other four cultivars inducing less than 25% germination (Fig. 3; Suppl. Table S1). The four lowest tillering rice cultivars with high in vitro germination rates (IAC 165, IAC 1246, Gangweondo and Kinko) also had the highest *S. hermonthica* attachment. In contrast, the high-tillering rice cultivars, with the lowest germination rates (Super

**Fig. 2** Differences in tillering in some representative low and high-tillering rice cultivars. The average number of tillers (between brackets) at 8 weeks after sowing were: IAC 165 (6), IAC 1246 (6), Gangweondo (7), Kinko (7), Agee (12), Anakila (14), TN 1 (16) and Super Basmati (18)



**Fig. 3** Numbers of tillers, *Striga hermonthica* germination (%) induced by root exudate, attachment (No.), emergence (No.) and dry biomass (g) of *S. hermonthica* in a series of rice cultivars. Bars represent mean  $\pm$  SE ( $n = 3$ ). The line represents average number of tillers per plant  $\pm$  SE ( $n = 3$ )



Basmati, TN 1, Anakila and Agee), had the lowest number of *S. hermonthica* attachments (Fig. 3). For most of the other cultivars, *S. hermonthica* attachment was similar to their position based on germination rate (Suppl. Table S1).

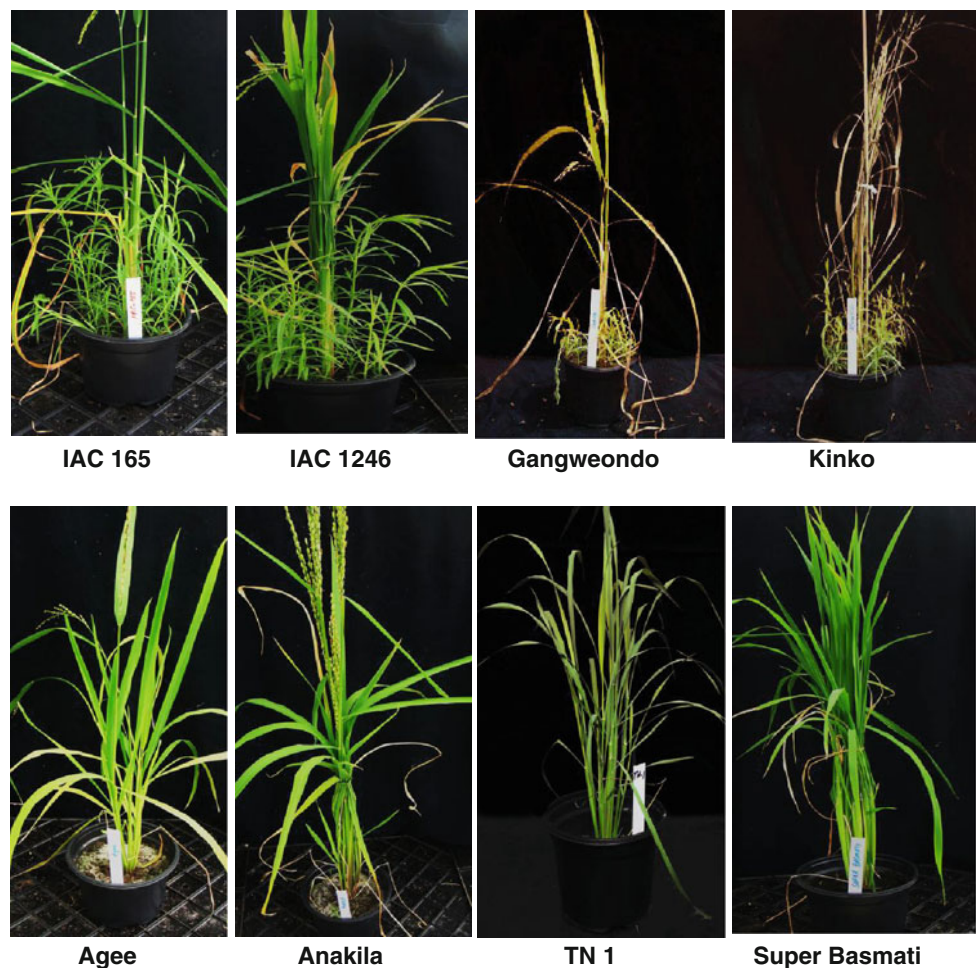
In line with the germination and attachments results, the four low tillering rice cultivars also displayed the highest *S. hermonthica* emergence (>25 plants per pot) while high-tillering cultivars as Agee, Anakila, TN 1 and Super Basmati showed significantly ( $P < 0.01$ ) lower *S. hermonthica* emergence numbers (<4 plants per pot) (Figs. 3, 4). The rest of the rice cultivars showed intermediate *S. hermonthica* emergence (8–25 plants per pot) (Suppl. Table S1). In accordance with the high *S. hermonthica* emergence, the low tillering rice cultivars, IAC 165, IAC 1246, Gangweondo and Kinko supported the highest *S. hermonthica* biomass (Fig. 3), while the lowest *S. hermonthica* biomass was found on the high-tillering rice cultivars Super Basmati, TN 1, Anakila and Agee. The latter varieties supported significantly ( $P < 0.01$ ) lower *S. hermonthica* biomass than 80% of the other cultivars. The other moderate tillering rice cultivars, like Tattare, Pehkuh, Shuang, Bhasmanik, Koirao and PI 160641 showed

significantly lower *S. hermonthica* dry biomass (<600 mg) than 50% of the other cultivars (Suppl. Table S1).

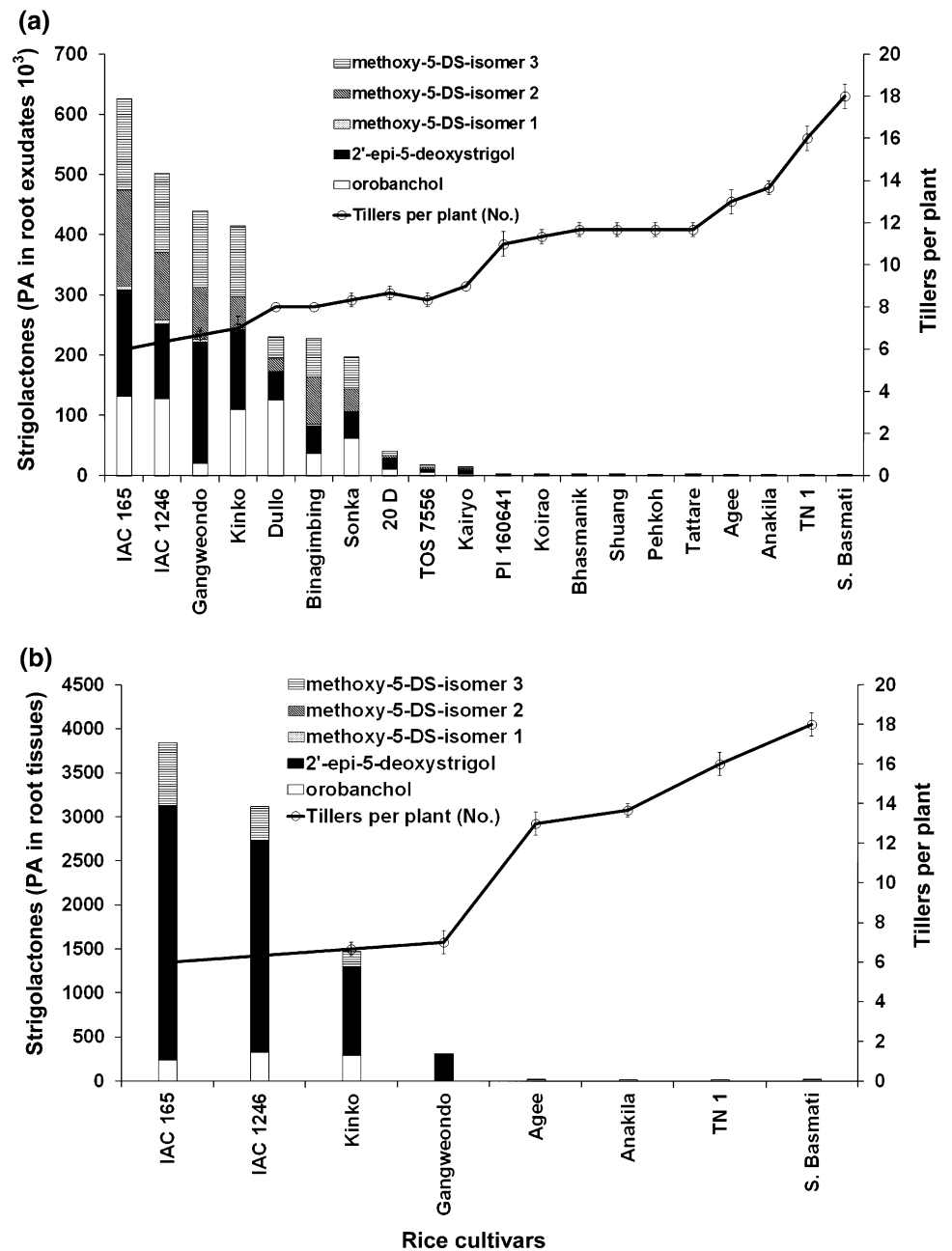
#### Strigolactone production

The concentration of strigolactones in the exudate varied strongly between the rice cultivars (Fig. 5a; Suppl. Table S2). The low tillering cultivars IAC 165, IAC 1246, Gangweondo, and Kinko were found to be top four highest strigolactone producers (Fig. 5a). The cultivars Dullo, Binagimbing, Sonka, 20D, TOS 7556, Kairyo, Tattare, Shuang, Pehkoh and Bhashmanik showed intermediate production levels, while the high-tillering cultivars Super Basmati, TN 1, Anakila and Agee were found as lowest strigolactone producers (Fig. 5a; Suppl. Table S2). Also the endogenous concentration of strigolactones in roots was high in the low tillering cultivars IAC 165, IAC 1246, Gangweondo and Kinko and low in the high-tillering cultivars Super Basmati, TN 1, Anakila and Agee (Fig. 5b). In addition to differences in the total amount of strigolactones, the cultivars also showed differences in the composition of strigolactones (Fig. 5a, b). The four cultivars

**Fig. 4** *Striga hermonthica* emergence in some representative low- and high-tillering rice cultivars as determined 12 weeks after sowing. The average number of *S. hermonthica* shoots emerged (between brackets) were: IAC 165 (34), IAC 1246 (29), Gangweondo (28), Kinko (28), Agee (1), Anakila (1), TN 1 (4) and Super Basmati (4)



**Fig. 5** Strigolactone concentration in the root exudates (a) and root tissues (b) of rice cultivars: 2'-epi-5-deoxystrigol (filled square), orobanchol (open square) and methoxy-5-deoxystrigol isomers 1–3 (horizontal box, diagonal box, dotted box). Bars represent means of peak areas of the individual strigolactones as determined by multiple reaction monitoring liquid chromatography–mass spectrometry in triplicate. The line represents the average number of tillers per plant  $\pm$  SE ( $n = 3$ )



producing the highest amount of 2'-epi-5-deoxystrigol included Gangweondo, IAC 165, Kinko and IAC 1246 (Fig. 5a, b; Suppl. Tables S2 and S3). For orobanchol, the highest producing cultivars were IAC 165, IAC 1246, Dullo and Kinko (Fig. 5a). The cultivars IAC 165, IAC 1246, Gangweondo and Kinko produced high levels of at least two of the three methoxy-5-deoxystrigol isomers 1–3 (Fig. 5a, b). The rice cultivar IAC 165 ranked on top for the amount of orobanchol and methoxy-5-deoxystrigol isomers 1–3 in the root exudate but in the root itself contained the highest amount of 2'-epi-5-deoxystrigol (Fig. 5a, b).

Relationship between tillering, strigolactone production and *S. hermonthica* infection

The above data show that there is an inverse relationship between the number of tillers per plant and *S. hermonthica* parasitism parameters (germination, attachment, emergence, dry biomass) as well as strigolactone production (Figs. 3, 5a, b). Regression analysis (on the basis of peak area) revealed that methoxy-5-deoxystrigol isomer 3 contributes most to the explanation of the variation in *S. hermonthica* germination and emergence in these rice cultivars followed by 2'-epi-5-deoxystrigol (Suppl. Table S4). The



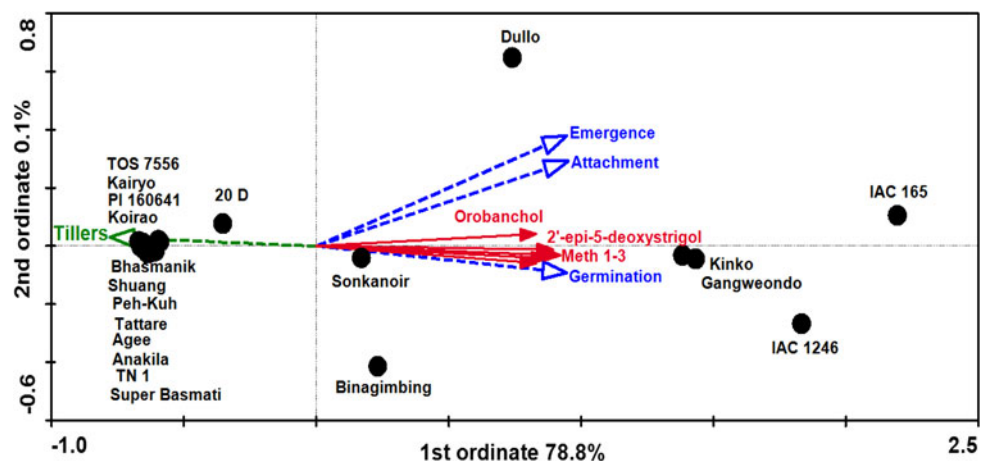
strigolactones did not contribute significantly to the explanation of variation in *S. hermonthica* attachment (Suppl. Table S4). 2'-Epi-5-deoxystrigol also contributes significantly to the explanation of variation in tiller numbers in contrast to the other strigolactones. However, correlation analysis showed that 2'-epi-5-deoxystrigol, orobanchol and the methoxy-5-deoxystrigol isomers 1–3 also closely correlate with each other (and *S. hermonthica* germination, attachment and emergence) (Suppl. Table S6). Interestingly, there was a higher correlation between 2'-epi-5-deoxystrigol and the three methoxy-isomers (0.77–0.81) than between orobanchol and these three isomers (0.60–0.66). The correlation between orobanchol and 2'-epi-5-deoxystrigol was in the same range as between orobanchol and the three isomers (0.63).

Statistical analysis of the variation between rice cultivars

The correlations between explanatory variables (strigolactones) and response variables (infection parameters) were visualized in an RDA triplot. The high strigolactone producing rice cultivars IAC 165, IAC 1246, Gangweondo, Kinko and Dullo clustered together along the first ordinate on the right side of the plot, whereas low producers such as Kairyo, PI 160641, Koirao, Bhasmanik, Peh-Kuh, Shuang, Tattare, Agee, Anakila, TN 1 and Super Basmati clustered tightly together along the first ordinate on the left side of the plot. The remaining rice cultivars Binagimbling, Sonkanoir and 20 D located more or less in between these two clusters forming a group of moderate strigolactone producers. The strigolactones explained 79% of the variance in infection parameters and tillering (MCP, *P* value <0.01) which is close to the explained variance by the first ordinate (78.8%). There is a high correlation between the individual strigolactones as illustrated by the fact that their vectors point in almost the same direction along the first ordinate. Only the vector of orobanchol deviates slightly

from the others. Due to this high correlation, each strigolactone explained a significant and sizeable fraction of the variance in infection parameters and tillering when only one strigolactone was added to the ordination model, with methoxy-5-deoxystrigol isomer 3 (Meth-3) explaining the highest (76%, MCP, *P* value <0.01) and orobanchol explaining the lowest fraction of the variation (61%, MCP, *P* value <0.01). However, forward selection showed that after addition of the most explanatory strigolactone (Meth-3) to the ordination model, orobanchol is the most explanatory strigolactone for the rest of the variation (2% MCP, *P* value = 0.2) (Suppl. Table S6). All the strigolactones correlated negatively with tillering and positively with *S. hermonthica* germination. The strigolactones also correlated positively, with attachment and emergence but less strong than with germination (Fig. 6) suggesting that there are other factors than the strigolactones influencing attachment and emergence of *S. hermonthica* after germination, as for example, in rice cultivar Dullo. Despite the similar total level of strigolactones exuded (and the similar germination), Dullo supported higher *Striga* emergence and attachment than Binagimbling (Fig. 6; Suppl. Tables S1–S2). Both have quite similar total amount of strigolactones but quite different composition (Fig. 5). Also among the other varieties there is strong variation in the strigolactone composition. This is visualized by the ratio's between the individual strigolactones (Suppl. Fig. 1; Suppl. Table 5). For example, PI160641 produces much more orobanchol than 2'-epi-5-deoxystrigol whereas for Gangweondo this is the reverse (Suppl. Fig. 1a), suggesting differential activity of the two branches of the strigolactone pathway in these cultivars. The low tillering rice cultivars IAC 165 and Gangweondo have much lower orobanchol to 2'-epi-5-deoxystrigol ratio both in the root exudate and in the root tissue compared with the high-tillering Agee and Super Basmati (Suppl. Table S5). Intriguingly, there is also variation for the ratio between strigolactone concentration in the exudate and in the root (Figs. 5, 6; Suppl. Table S5).

**Fig. 6** Redundancy analysis plot visualizing the distance between rice cultivars (solid circles) based on a direct gradient analysis and showing patterns in the parasitism and tillering parameters (dotted arrows response variables) that could be explained by the strigolactones (solid arrows explanatory variables). The ordination axes are aggregates of the explanatory variables that best explain the response data



Agee, for example, has a high orobanchol/2'-epi-5-deoxystrigol ratio in the root, whereas in the exudate it is average. For TN1 it is more or less the opposite. Another interesting feature in the graphs is that there seems to be no consistent relation between orobanchol and the methoxy-isomers (Suppl. Fig. 1b, c), and that in Bhasmanik the (putative) conversion of 2'-epi-5-deoxystrigol to both methoxy-isomers is highly active (Suppl. Fig. 1d, e).

## Discussion

In the present study, the LC/MS quantification of strigolactones and the assessment of tillering and *S. hermonthica* infection in a range of rice cultivars collected from all over the world confirms the correlation between the regulation by strigolactones of above-ground plant architecture (tillering) and *S. hermonthica* infection as has been reported before (Gomez-Roldan et al. 2008; Umehara et al. 2008, 2010). We show that there is an extensive genetic variation for strigolactone production among the 20 rice varieties investigated and that this genetic variation is reflected in a strong variation in tillering and *S. hermonthica* infection. Low tillering, high strigolactone producing rice cultivars are more prone to *S. hermonthica* infection, and high-tillering, low strigolactone producing varieties are less prone to *S. hermonthica* infection. This shows that a genetic variation for strigolactone production exists in rice, opening up possibilities to introduce traits with low induction of *S. hermonthica* germination in rice. The results of the present study fit well with the postulated hypothesis that low secretion of strigolactones into the rhizosphere could be used to reduce *S. hermonthica* infection (Bouwmeester et al. 2003; Sun et al. 2008). In addition, our results with rice match with results on sorghum, showing that cultivars that produce low levels of the germination stimulants are resistant to *S. hermonthica* (Ejeta 2007; Mohamed et al. 2010). For rice, our study could imply that the introduction of more-tillering cultivars (with low strigolactone production) may prove to be an inexpensive approach to *S. hermonthica* management in rice, an increasing problem in parts of the African continent (Rodenburg et al. 2006, 2010; Rodenburg and Johnson 2009).

In addition to genetic variation in strigolactone amount, we also found a variation in the strigolactone composition. The strigolactones that we analysed, orobanchol, 2'-epi-5-deoxystrigol and the methoxy-5-deoxystrigol isomers 1–3 (Fig. 1), can be divided into two groups based on their correlation to each other (Suppl. Table S5): orobanchol groups separately from the other four that exhibit a much higher correlation to each other. This is also visualized in Fig. 6 where the vector for orobanchol deviates from those of the other four strigolactones. The exact identity of the

methoxy-5-deoxystrigol isomers has not yet been determined, but the higher correlation with 2'-epi-5-deoxystrigol could suggest that they have a 2'-epi-coupled D-ring which would make them methoxy-2'-epi-5-deoxystrigol isomers. Purification of high enough amounts of these isomers followed by NMR characterization should prove this assumption. The biosynthesis of orobanchol and the methoxy-2'-epi-5-deoxystrigol isomers would diverge from the step in which the D-ring is coupled/formed to produce 5-deoxystrigol—the precursor for orobanchol—and 2'-epi-5-deoxystrigol, the precursor for the methoxy-2'-epi-5-deoxystrigol isomers. Interestingly, we cannot detect 5-deoxystrigol (or only in minute amounts) suggesting that the conversion to orobanchol is very efficient and not rate-limiting. Nevertheless, there is substantial genetic variation in the rice varieties included in the present study in the ratio between orobanchol and 2'-epi-5-deoxystrigol and the methoxy-5-deoxystrigol isomers (Suppl. Table S5; Suppl. Fig. S1). This large variation suggests that there is genetic variation in the stereochemistry of the D-ring coupling/formation. Similarly, the absence of a pattern in the orobanchol/methoxy-5-deoxystrigol isomer ratios is again suggestive that they might be methoxy-2'-epi-5-deoxystrigol isomers (Suppl. Table S5; Suppl. Fig. S1). Intriguing is the variation for the ratio between the strigolactone concentrations in the exudate and in the root (Fig. 5a, b; Suppl. Table S5). This difference in the ratio in root exudates and root tissues is suggestive of selectivity in the transport of strigolactones to the rhizosphere (to attract AM fungi) or to the shoot (for tillering inhibition). It has been demonstrated that different strigolactones exhibit different activities in the biological processes they control (branching inhibition, AM fungi hyphal branching and germination of parasitic plant seeds) (Kohlen et al. 2011b). Thus, differentiation in transport to the shoot or the rhizosphere could be biologically meaningful. Indeed, the presence of orobanchol in the xylem of *Arabidopsis thaliana* and tomato has recently been reported, whereas other strigolactones present in the root exudate were not detectable in the xylem (Kohlen et al. 2011a).

In the RDA analysis, strigolactones explained a considerable fraction of the variation in infection parameters and tillering (79%). In the RDA plot, the strigolactones correlate strongly positively with germination, attachment and emergence of *S. hermonthica* and negatively with tillering of the rice cultivars. Germination significantly correlated positively with 2'-epi-5-deoxystrigol, orobanchol and methoxy-5-deoxystrigol isomer-3 (Suppl. Table S6). In in vitro germination bioassays with standards of orobanchol and 2'-epi-5-deoxystrigol, germination of *S. hermonthica* was induced more efficiently by 2'-epi-5-deoxystrigol than by orobanchol (data not shown). Germination bioassays with fractions of rice root exudate

suggest that the methoxy-5-deoxystrigol isomers are also highly effective in inducing germination of *S. hermonthica* (C Cardoso, WUR, personal communication). The regression analysis in the present study further confirms this tendency. Methoxy-5-deoxystrigol isomer 3 contributed most to the explanation of the variation in *S. hermonthica* germination followed by 2'-epi-5-deoxystrigol while orobanchol did not contribute (Suppl. Table S4). The correlation of attachment and emergence with the amount of strigolactones is lower than for germination but still considerable. Clearly, not all germinated *S. hermonthica* seeds will also emerge. The induction of *S. hermonthica* seed germination by the strigolactones is just the first step in the parasitism process. Subsequently, successful attachment and a compatible interaction are requirements for emergence. The difference in the direction of emergence and germination arrows with attachment points to differences in resistance between the rice varieties in these later stages of the parasitism process (Fig. 6). Differences in resistance in the germination phase as well as in post-attachment resistance were recently also reported for the New Rice for Africa NERICA's (Cissoko et al. 2011; Jamil et al. 2011b).

AM-fungal symbiosis in high-tillering rice cultivars might be affected negatively by the lower production of strigolactones which could cause reduced hyphal branching in the root zone (Garcia-Garrido et al. 2009). However, the strigolactone composition of the exudate may be a crucial factor here as it has been shown that there is a large difference in the capacity of individual strigolactones to induce hyphal branching in AM fungi (Akiyama et al. 2010). Rice varieties producing the right mix of strigolactones could have the desired tillering and AM-fungal phenotype while at the same time not inducing too much *S. hermonthica* germination. Since there is genetic variation for the strigolactone composition in rice, selection could potentially alter the strigolactone composition to a more desired mixture.

In conclusion, the tillering potential of rice turns out to be an important marker for the plant's susceptibility to *S. hermonthica* infection. This phenomenon could be helpful in making decisions about the extent of *S. hermonthica* infection to be expected in germplasm collections and could hence guide breeders in selecting the right materials when breeding for *Striga* resistance. Selection of suitable, high-tillering cultivars (which we have now shown to produce less strigolactones) might be a useful strategy to reduce serious cereal losses by these noxious parasitic weeds.

**Acknowledgments** Funding from Higher Education Commission (HEC to MJ) Pakistan and the Netherlands Organization for Scientific Research (to HJB VICI grant 865.06.002 and Equipment Grant

834.08.001 and to BH: ERGO Grant 838.06.012) is acknowledged. This project is (co) financed by the Centre for Bio Systems Genomics (CBSG) which is part of the Netherlands Genomics Initiative/Netherlands Organization for Scientific Research. We thank Ms. Flora De Guzman (International Rice Research Institute, Philippines), Dr. Julie Scholes (University of Sheffield, United Kingdom) and Dr. Abdul Rehman (National Agricultural Research Center, Pakistan) for providing seeds of various rice cultivars. We are also grateful to Cheickna Diarra and A. G. Babiker for providing *S. hermonthica* seeds and to Binne Zwanenburg (Radboud University, Nijmegen, the Netherlands), Koichi Yoneyama (Weed Science Center, Utsunomiya University, Japan) and Kohki Akiyama (Osaka Prefecture University, Japan) for kind provision of GR24, and standards of orobanchol, 2'-epi-orobanchol, 5-deoxystrigol and 2'-epi-5-deoxystrigol and Tadao Asami for providing D<sub>6</sub>-2'-epi-5-deoxystrigol. Kind help in statistical analysis by Tahira Jamil, (Wageningen University, the Netherlands) is also acknowledged.

**Open Access** This article is distributed under the terms of the Creative Commons Attribution Noncommercial License which permits any noncommercial use, distribution, and reproduction in any medium, provided the original author(s) and source are credited.

## References

- Akiyama K, Hayashi H (2006) Strigolactones: chemical signals for fungal symbionts and parasitic weeds in plant roots. *Ann Bot* 97:925–931
- Akiyama K, Matsuzaki K, Hayashi H (2005) Plant sesquiterpenes induce hyphal branching in arbuscular mycorrhizal fungi. *Nature* 435:824–827
- Akiyama K, Ogasawara S, Ito S, Hayashi H (2010) Structural requirements of strigolactones for hyphal branching in AM fungi. *Plant Cell Physiol* 51:1104–1117
- Bouwmeester HJ, Matusova R, Sun ZK, Beale MH (2003) Secondary metabolite signalling in host parasitic plant interactions. *Curr Opin Plant Biol* 6:358–364
- Bouwmeester HJ, Roux C, Lopez-Raez JA, Becard G (2007) Rhizosphere communication of plants, parasitic plants and AM fungi. *Trends Plant Sci* 12:224–230
- Cissoko M, Boissard A, Rodenburg J, Press MC, Scholes DJ (2011) New Rice for Africa (NERICA) cultivars exhibit different levels of post-attachment resistance against the parasitic weeds *Striga hermonthica* and *Striga asiatica*. *New Phytol*. doi:10.1111/j.1469-8137.2011.03846.x
- Crawford S, Shinohara N, Sieberer T, Williamson L, George G, Hepworth J, Muller D, Domagalska MA, Leyser O (2010) Strigolactones enhance competition between shoot branches by dampening auxin transport. *Development* 137:2905–2913
- Ejeta G (2007) Breeding for *Striga* resistance in sorghum: exploitation of an intricate host-parasite biology. *Crop Sci* 47:S216–S227
- Estabrook EM, Yoder JI (1998) Plant-plant communications: rhizosphere signaling between parasitic angiosperms and their hosts. *Plant Physiol* 116:1–7
- Garba A, Fagam AS, Fushison GG (2007) Contribution of environmental factors to tillering and yield of rice during dry season in Bauchi, Nigeria. *Int J Trop Agric Food Syst* 1:42–47
- Garcia-Garrido JM, Lenzemo V, Castellanos-Morales V, Steinkellner S, Vierheilig H (2009) Strigolactones, signals for parasitic plants and arbuscular mycorrhizal fungi. *Mycorrhiza* 19:449–459

- Gomez-Roldan V, Fermas S, Brewer PB, Puech-Pages V, Dun EA, Pillot JP, Letisse F, Matusova R, Danoun S, Portais JC, Bouwmeester H, Becard G, Beveridge CA, Rameau C, Rochange SF (2008) Strigolactone inhibition of shoot branching. *Nature* 455:189–194
- Harrison JM (2005) Signaling in the arbuscular mycorrhizal symbiosis. *Annu Rev Microbiol* 59:19–42
- Hayward A, Stimberg P, Beveridge C, Leyser O (2009) Interactions between auxin and strigolactone in shoot branching control. *Plant Physiol* 151:400–412
- Jamil M, Charnikhova T, Cardoso C, Jamil T, Verstappen F, Bouwmeester H (2011a) Quantification of the relationship between strigolactones and *Striga hermonthica* in rice under varying levels of nitrogen and phosphorus. *Weed Res* 51:373–385
- Jamil M, Rodenburg J, Charnikhova T, Bouwmeester H (2011b) Pre-attachment *Striga hermonthica* resistance of New Rice for Africa (NERICA) cultivars based on low strigolactone production. *New Phytol*. doi:10.1111/j.1469-8137.2011.03850.x
- Kapulnik Y, Delaux PM, Resnick N, Mayzlish-Gati E, Winger S, Bhattacharya C, Sejalon-Delmas N, Combier JP, Becard G, Belausov E, Beeckman T, Dor E, Hershenhorn J, Koltai H (2011) Strigolactones affect lateral root formation and root-hair elongation in *Arabidopsis*. *Planta* 233:209–216
- Kim HK, Luquet D, van Oosterom E, Dingkuhn M, Hammer G (2010a) Regulation of tillering in sorghum: genotypic effects. *Ann Bot* 106:69–78
- Kim HK, van Oosterom E, Dingkuhn M, Luquet D, Hammer G (2010b) Regulation of tillering in sorghum: environmental effects. *Ann Bot* 106:57–67
- Kohlen W, Charnikhova T, Liu Q, Bours R, Domagalska MA, Beguerie S, Verstappen F, Leyser O, Bouwmeester H, Ruyter-Spira C (2011a) Strigolactones are transported through the xylem and play a key role in shoot architectural response to phosphate deficiency in non arbuscular mycorrhizal host *Arabidopsis*. *Plant Physiol* 155:974–987
- Kohlen W, Ruyter-Spira C, Bouwmeester H (2011b) Strigolactones: a new musician in the orchestra of plant hormones. *Botany* (in press)
- Koltai H, Dor E, Hershenhorn J, Joel DM, Weininger S, Lekalla S, Shealtiel H, Bhattacharya C, Eliahu E, Resnick N, Barg R, Kapulnik Y (2010) Strigolactones effect on root growth and root hair elongation may be mediated by auxin efflux carriers. *J Plant Growth Regul* 29:129–136
- Leyser O (2003) Regulation of shoot branching by auxin. *Trends Plant Sci* 8:541–545
- Lynn DG, Chang M (1990) Phenolic signals in cohabitation—implications for plant development. *Annu Rev Plant Physiol Plant Mol Biol* 41:497–526
- Matusova R, Rani K, Verstappen FWA, Franssen MCR, Beale MH, Bouwmeester HJ (2005) The strigolactone germination stimulants of the plant parasitic *Striga* and *Orobanch* spp. are derived from the carotenoid pathway. *Plant Physiol* 139:920–934
- Mohamed AH, Housley TL, Ejeta G (2010) An in vitro technique for studying specific *Striga* resistance mechanisms in sorghum. *Afr J Agric Res* 5:1868–1875
- Ongaro V, Leyser O (2007) Shoot branching in *Arabidopsis*. *Comp Biochem Physiol A-Mol Integr Physiol* 146:S237–S238
- Rodenburg J, Johnson DE (2009) Weed management in rice based cropping systems in Africa. *Adv Agron* 103:149–218
- Rodenburg J, Bastiaans L, Kropff MJ (2006) Characterization of host tolerance to *Striga hermonthica*. *Euphytica* 147:353–365
- Rodenburg J, Riches CR, Kayeke JM (2010) Addressing current and future problems of parasitic weeds in rice. *Crop Prot* 29:210–221
- Ruyter-Spira C, Kohlen W, Charnikhova T, van Zeijl A, van Bezouwen L, de Ruijter N, Cardoso C, Lopez-Raez JA, Matusova R, Bours R, Verstappen F, Bouwmeester HJ (2011) Physiological effects of the synthetic strigolactone analog GR24 on root system architecture in *Arabidopsis*: another belowground role for strigolactones? *Plant Physiol* 155:721–734
- Sun Z, Hans J, Walter MH, Matusova R, Beekwilder J, Verstappen FWA, Ming Z, van Echtelt E, Strack D, Bisseling T, Bouwmeester HJ (2008) Cloning and characterisation of a maize carotenoid cleavage dioxygenase (ZmCCD1) and its involvement in the biosynthesis of apocarotenoids with various roles in mutualistic and parasitic interactions. *Planta* 228:789–801
- ter Braak CJF (1988) Canoco—an extension of decorana to analyze species environment relationships. *Vegetatio* 75:159–160
- Umehara M, Hanada A, Yoshida S, Akiyama K, Arite T, Takeda-Kamiya N, Magome H, Kamiya Y, Shirasu K, Yoneyama K, Kyozuka J, Yamaguchi S (2008) Inhibition of shoot branching by new terpenoid plant hormones. *Nature* 455:195–200
- Umehara M, Hanada A, Magome H, Takeda-Kamiya N, Yamaguchi S (2010) Contribution of strigolactones to the inhibition of tiller bud outgrowth under phosphate deficiency in rice. *Plant Cell Physiol* 51:1118–1126
- Ward SP, Leyser O (2004) Shoot branching. *Curr Opin Plant Biol* 7:73–78
- Wu GW, Wilson LT, McClung AM (1998) Contribution of rice tillers to dry matter accumulation and yield. *Agron J* 90:317–323
- Xie X, Yoneyama K, Yoneyama K (2010) The strigolactone story. *Annu Rev Phytopathol* 48:93–117
- Yoder JI (2001) Host-plant recognition by parasitic Scrophulariaceae. *Curr Opin Plant Biol* 4:359–365
- Yoneyama K, Yoneyama K, Takeuchi Y, Sekimoto H (2007) Phosphorus deficiency in red clover promotes exudation of orobanchol, the signal for mycorrhizal symbionts and germination stimulant for root parasites. *Planta* 225:1031–1038
- Yoneyama K, Awad AA, Xie XN, Takeuchi Y (2010) Strigolactones as germination stimulants for root parasitic plants. *Plant Cell Physiol* 51:1095–1103