

# Detection of *Mycobacterium tuberculosis* in Sputum by Gas Chromatography-Mass Spectrometry of Methyl Mycocerosates Released by Thermochemolysis

Denise M. O'Sullivan<sup>1\*</sup>, Simona C. Nicoara<sup>2</sup>, Reggie Mutetwa<sup>3</sup>, Stanley Mungofa<sup>3</sup>, Oona Y-C. Lee<sup>4</sup>, David E. Minnikin<sup>4</sup>, Max W. Bardwell<sup>2</sup>, Elizabeth L. Corbett<sup>1,3</sup>, Ruth McNerney<sup>1\*</sup>, Geraint H. Morgan<sup>2</sup>

**1** Department of Pathogen Molecular Biology, London School of Hygiene & Tropical Medicine, London, United Kingdom, **2** Department of Physical Sciences, The Open University, Milton Keynes, United Kingdom, **3** Biomedical Research and Training Institute, Harare, Zimbabwe, **4** School of Biosciences, University of Birmingham, Edgbaston, Birmingham, United Kingdom

## Abstract

Tuberculosis requires rapid diagnosis to prevent further transmission and allow prompt administration of treatment. Current methods for diagnosing pulmonary tuberculosis lack sensitivity or are extremely slow. The identification of lipids using gas chromatography-electron impact mass spectrometry (GC-EI/MS) could provide an alternative solution. We have studied mycocerosic acid components of the phthiocerol dimycocerosate (PDIM) family of lipids using thermochemolysis GC-EI/MS. To facilitate use of the technology in a routine diagnostic laboratory a simple extraction procedure was employed where PDIMs were extracted from sputum using petroleum ether, a solvent of low polarity. We also investigated a method using methanolic tetramethylammonium hydroxide, which facilitates direct transesterification of acidic components to methyl esters in the inlet of the GC-MS system. This eliminates conventional chemical manipulations allowing rapid and convenient analysis of samples. When applied to an initial set of 40 sputum samples, interpretable results were obtained for 35 samples with a sensitivity relative to culture of 94% (95%CI: 69.2,100) and a specificity of 100% (95%CI: 78.1,100). However, blinded testing of a larger set of 395 sputum samples found the assay to have a sensitivity of 61.3% (95%CI: 54.9,67.3) and a specificity of 70.6% (95%CI: 62.3,77.8) when compared to culture. Using the results obtained we developed an improved set of classification criteria, which when applied in a blinded re-analysis increased the sensitivity and specificity of the assay to 64.9% (95%CI: 58.6,70.8) and 76.2% (95%CI: 68.2,82.8) respectively. Highly variable levels of background signal were observed from individual sputum samples that inhibited interpretation of the data. The diagnostic potential of using thermochemolytic GC-EI/MS of PDIM biomarkers for diagnosis of tuberculosis in sputum has been established; however, further refinements in sample processing are required to enhance the sensitivity and robustness of the test.

**Citation:** O'Sullivan DM, Nicoara SC, Mutetwa R, Mungofa S, Lee OY-C, et al. (2012) Detection of *Mycobacterium tuberculosis* in Sputum by Gas Chromatography-Mass Spectrometry of Methyl Mycocerosates Released by Thermochemolysis. PLoS ONE 7(3): e32836. doi:10.1371/journal.pone.0032836

**Editor:** Jérôme Nigou, French National Centre for Scientific Research - Université de Toulouse, France

**Received:** November 2, 2011; **Accepted:** January 31, 2012; **Published:** March 5, 2012

**Copyright:** © 2012 O'Sullivan et al. This is an open-access article distributed under the terms of the Creative Commons Attribution License, which permits unrestricted use, distribution, and reproduction in any medium, provided the original author and source are credited.

**Funding:** This work was supported by the Wellcome Trust project grant 083597 and The Leverhulme Trust through an Emeritus Fellowship to D.E.M. and Project Grant F/00 094/BL (D.E.M., O.Y.-C.L.). RM received salary support from the Department for International Development, UK. The funders had no role in study design, data collection and analysis, decision to publish, or preparation of the manuscript.

**Competing Interests:** The authors have read the journal's policy and have the following conflicts: All authors declare no commercial interests or consultancies. A patent application (No. 110953346) relating to the detection of tuberculosis has been filed by the Open University and the London School of Hygiene & Tropical Medicine. This does not alter the authors' adherence to all the PLoS ONE policies on sharing data and materials.

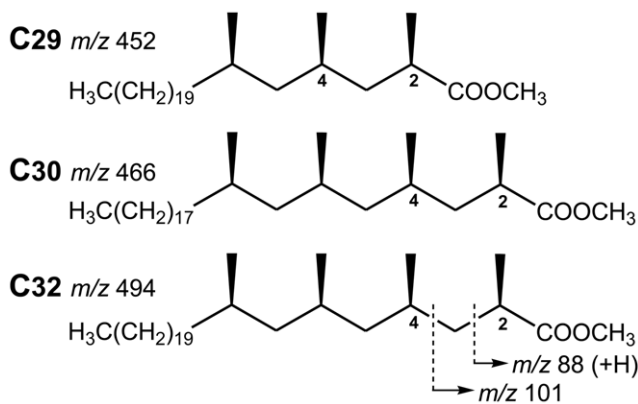
\* E-mail: Ruth.Mcnerney@lshtm.ac.uk

‡ Current address: LGC, Teddington, United Kingdom

## Introduction

Tuberculosis (TB) is a global health problem. The World Health Organization estimated 9.4 million incident cases during 2009 and 1.7 million deaths [1]. The challenge in reducing the global burden of tuberculosis is rapid diagnosis followed by appropriate treatment. Current methods of diagnosing TB are inadequate. The most widely used test, microscopic examination of sputum, lacks sensitivity and global cases detection rates remain low [2]. It is estimated that only 63% of incident cases are detected each year [1]. Definitive diagnosis requires isolation and culture of the bacilli which may take weeks and requires considerable laboratory infrastructure to protect against infection [2,3].

Detection of lipid moieties, which are essential components of the cell envelope of *Mycobacterium tuberculosis*, offers an alternative approach for diagnosis. Chemical analysis has the advantage over culture methods in that it can be rapid and does not require live organisms. The mycocerosic acid components of the phthiocerol dimycocerosate (PDIM) family of complex lipids are established diagnostic markers for tuberculosis [4,5]. Fatty acids of this type are found in *M. tuberculosis*, *Mycobacterium bovis*, *Mycobacterium kansasii*, *Mycobacterium leprae*, *Mycobacterium marinum*, *Mycobacterium gastri*, *Mycobacterium haemophilum* and *Mycobacterium ulcerans* [6,7,8]. Members of the *M. tuberculosis* complex have a characteristic profile composed of trimethyl C<sub>29</sub> and tetramethyl C<sub>30</sub> and C<sub>32</sub> mycocerosates (Figure 1), while the other related mycobacteria



**Figure 1. Structures of the *M. tuberculosis* C<sub>29</sub>, C<sub>30</sub> and C<sub>32</sub> mycocerosic acid methyl esters.** The ions at *m/z* 452, 466 and 494 correspond to the molecular weights of these esters. Ions at *m/z* 88 and 101 are characteristic for 2-methyl branched fatty acid methyl esters, the former resulting from a well-known “McLafferty” rearrangement with transfer of one hydrogen atom.  
 doi:10.1371/journal.pone.0032836.g001

mentioned have distinct profiles [4,9]. Analysis of mycocerosates has previously been performed using gas chromatography (GC) followed by electron capture detection or negative ion chemical ionisation MS [4,5,9,10], including detection in sputum [5,10].

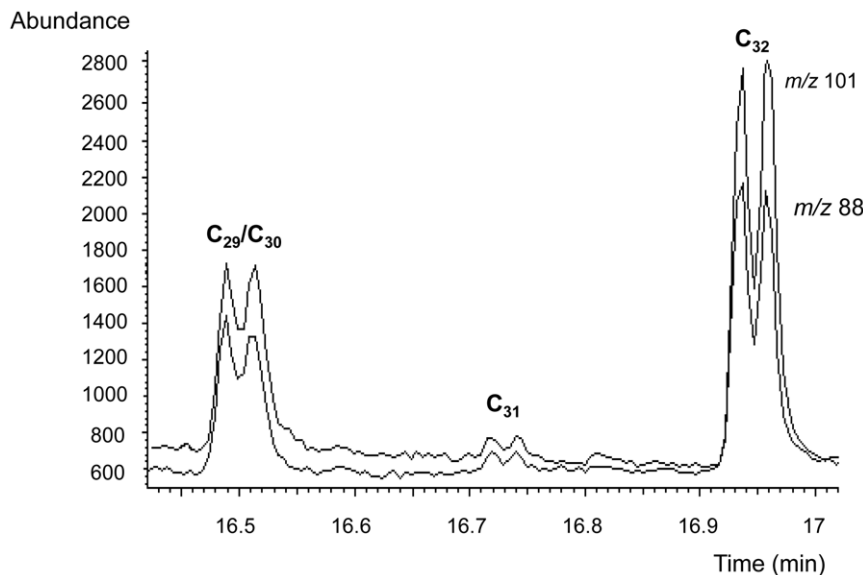
*M. tuberculosis* PDIMs are highly stable waxes, composed of mixtures of long-chain multimethyl-branched mycocerosic acids esterified to C<sub>34</sub> and C<sub>36</sub> long-chain diols, the phthiocerols ([4,8]). Degradation of these extremely hydrophobic waxes requires strong chemical methods. Alkaline hydrolysis requires an overnight non-aqueous potassium hydroxide/methanol/toluene treatment system [4,9]. Alternatively, the PDIMs may be cleaved by reduction [7,11], but such a procedure is complex and lengthy and

unattractive for rapid detection or use in a clinical diagnostic laboratory.

An advantage of the PDIM lipids over other lipid entities is their exceptionally low polarity, which enables them to be preferentially extracted by non-polar solvents [10,12], separating them from the majority of the other mycobacterial and mammalian lipids. We have investigated a simple extraction procedure followed by thermally assisted hydrolysis and methylation (THM), prior to the analysis by gas chromatography (GC) coupled with electron impact mass spectrometry (EI/MS), to ascertain the potential for a rapid diagnostic test for pulmonary tuberculosis based on detection of the mycocerosic acid components of PDIMs. This protocol involves heating samples with methanolic tetramethylammonium hydroxide (TMAH), which facilitates direct transesterification of the acidic components to methyl esters [13]. Performing this transformation in the programmable temperature vaporization (PTV) inlet of a GC-MS eliminates conventional chemical manipulations allowing rapid analysis of clinical samples. The novelty of this work is the application of THM-GC-EI/MS to the analysis of PDIMs extracted from sputum.

## Results

Thermochemolytic-gas chromatography-electron impact mass spectrometry (THM-GC-EI/MS) of standard phthiocerol dimycocerosate (PDIM) waxes generated profiles characteristic of mycocerosic acid methyl esters from *M. tuberculosis*. The diagnostic mycocerosates are trimethyl C<sub>29</sub> and tetramethyl C<sub>30</sub> and C<sub>32</sub> acids [4,9]. As shown in Figure 2, each mycocerosate is represented as a characteristic double peak due to racemisation during the alkaline hydrolysis [4]. As explained in the discussion section, the earlier eluting double peak represents overlapping trimethyl C<sub>29</sub> and tetramethyl C<sub>30</sub> mycocerosates; the additional methyl branch in the larger C<sub>30</sub> mycocerosate increases its volatility so that it co-elutes with the smaller C<sub>29</sub> component. The



**Figure 2. Thermochemolytic-gas chromatography-electron impact/mass spectrometry (THM-GC-EI/MS) of purified phthiocerol dimycocerosate (PDIM) waxes.** The selected ion monitored EI/MS chromatogram shows the target fragment ions *m/z* 101 and *m/z* 88, resulting from the major trimethyl C<sub>29</sub> and tetramethyl C<sub>30</sub>, and C<sub>32</sub> mycocerosates released by thermochemolysis of the PDIMs. A minor proportion of a tetramethyl C<sub>31</sub> mycocerosate is also indicated. The characteristic doublet peaks are due to racemisation during the alkaline hydrolysis. The method relied on recognizing comparable proportions of the combined C<sub>29</sub>/C<sub>30</sub> peak and the C<sub>32</sub> peak, as was the case in all the positive specimens. Some minor variation in the ratios of the individual peaks was observed, but this did not affect the diagnostic ratios.  
 doi:10.1371/journal.pone.0032836.g002

later eluting double peak corresponds to the two diastereoisomers of tetramethyl C<sub>32</sub> mycocerosate.

### Spiking of negative sputum with PDIMs standard

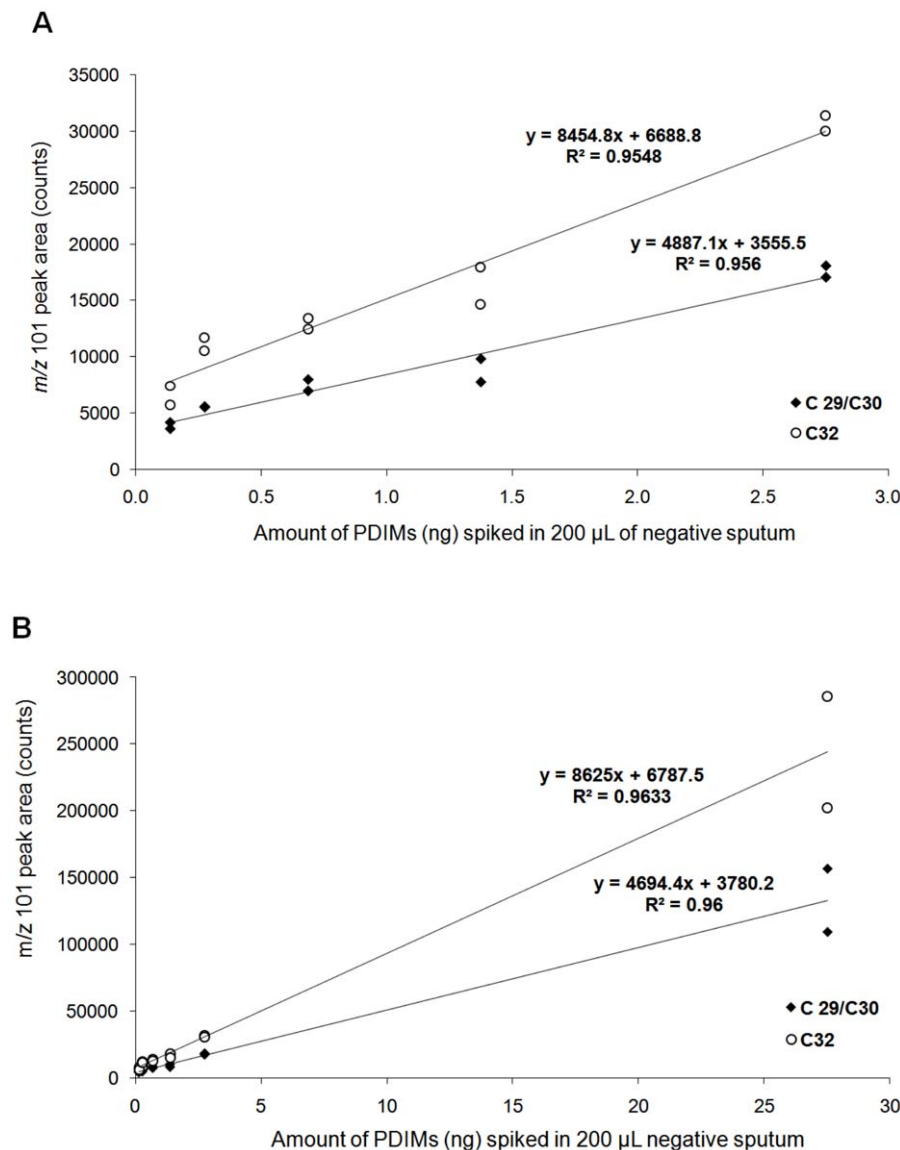
Sputum samples were processed using sodium hydroxide in a standard decontamination procedure routinely applied prior to *M. tuberculosis* culture [14]. Apolar lipids were extracted from samples with petroleum ether 60–80°C (PE) using a modified method from Dobson *et al.*. Duplicate analyses of extracts obtained from negative sputum samples spiked with PDIMs standard (140–27,500 pg/mL) demonstrated that the yield of the mycocerosic acid methyl esters was proportional to the amount of material added, within the range tested (Figure 3). Both the C<sub>29</sub>/C<sub>30</sub> and C<sub>32</sub> peaks were clearly visible in the extract spiked at the lowest level analyzed, 140 pg of PDIMs (equivalent to 7 pg of PDIMs loaded in liner), with an average signal to noise ratio (S/N) of 9.1 for C<sub>29</sub>/C<sub>30</sub>, and of 39.3 for C<sub>32</sub>.

### Spiking of negative sputum with culture

Duplicate analyses of the extracts obtained from pooled negative sputum samples spiked with *M. tuberculosis* culture (140–5,600 CFU per mL) indicated that the areas of the mycocerosic acid methyl esters peaks showed a linear relationship with the number of bacteria in the range tested (Figure 4). As can be seen in Figure 5, both the C<sub>29</sub>/C<sub>30</sub> and C<sub>32</sub> peaks were clearly visible in the extract spiked at the lowest level analyzed 140 CFU per mL, and had an average signal to noise ratio (S/N) of 36.2 for C<sub>29</sub>/C<sub>30</sub>, and 55.3 for C<sub>32</sub>.

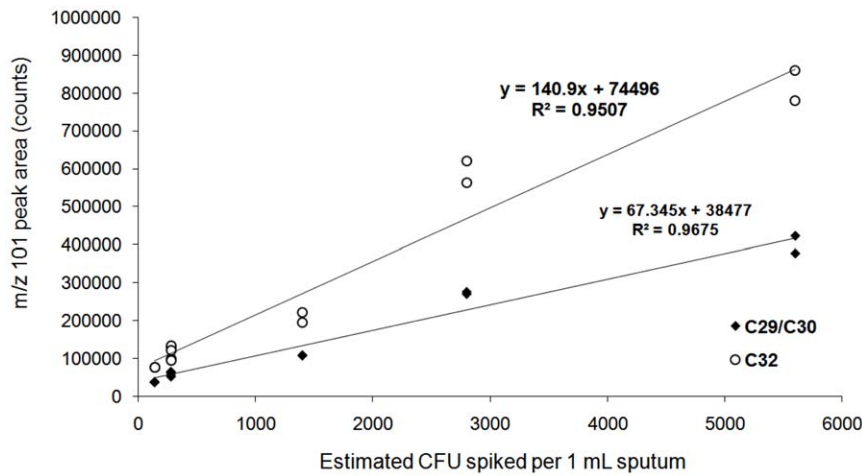
### Identification of mycocerosic acids in clinical isolates

Sputum samples from suspected TB cases were processed in two batches; the first panel (the test batch) consisted of 40 samples (20 smear positive culture positive and 20 smear and culture negative), and the second panel (the evaluation batch) consisted of 395 samples. All samples were subjected to smear microscopy and



**Figure 3. THM-GC-El/MS of sputum spiked with PDIMs.** The graphs show the peak areas obtained for C<sub>29</sub>/C<sub>30</sub> and C<sub>32</sub> mycocerosates generated from spiking 0.2 mL of pooled TB negative sputum samples with PDIM standard, (A) in the range 0.14–2.75 ng, and (B) expanding the range between 0.14–27.5 ng.

doi:10.1371/journal.pone.0032836.g003

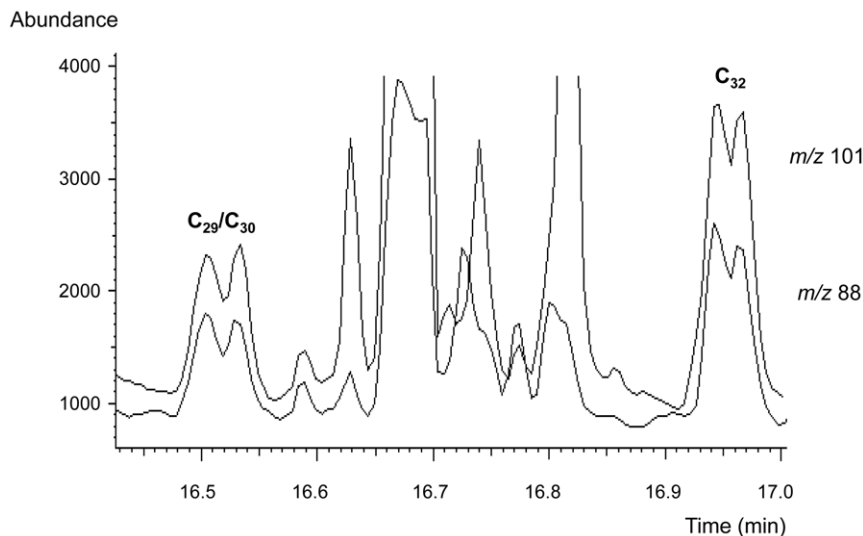


**Figure 4. THM-GC-EI/MS of sputum spiked with *M. tuberculosis* bacilli.** The graph shows the peak areas obtained for C<sub>29</sub>/C<sub>30</sub> and C<sub>32</sub> mycocerosates generated from spiking 1 mL of pooled TB negative sputum sample with *M. tuberculosis* culture (140–5,600 CFU/mL). doi:10.1371/journal.pone.0032836.g004

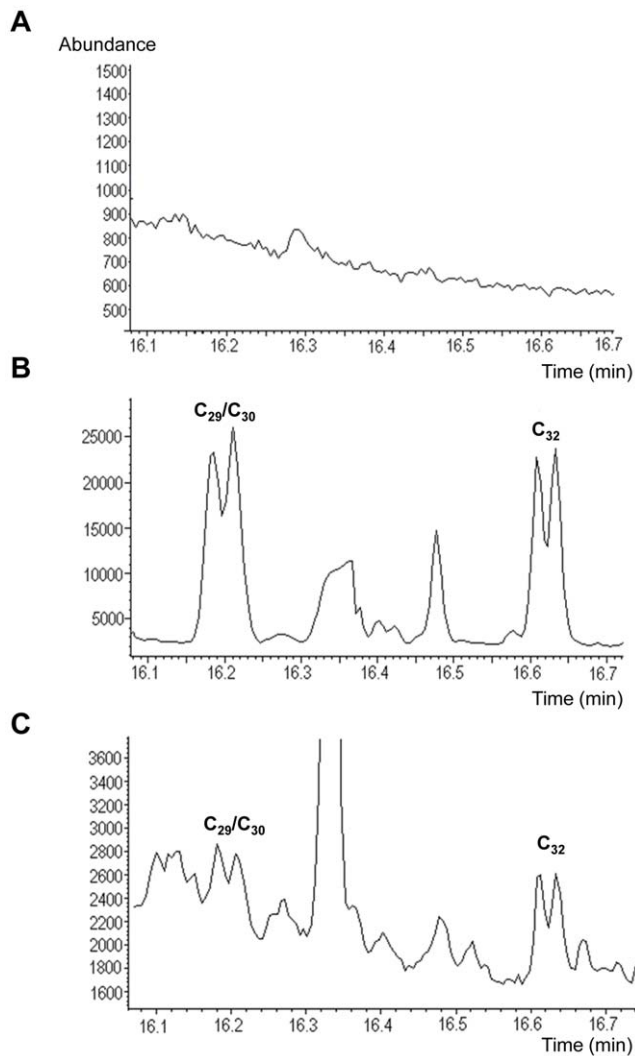
culture for *M. tuberculosis* prior to the THM-GC-EI/MS analysis. On blinded testing the panel of 40 sputum samples, mycocerosic acids were identified in 14/20 smear and culture positive sputum specimens. Three smear and culture positive sputum specimens were incorrectly assigned as negative and the remaining three were assigned as indeterminate. Of the smear and culture negative sputum specimens, 18/20 were assigned as negative and the remaining 2/20 were classified as indeterminate. Following unblinding, the characteristic doublet peaks were identified at the appropriate retention times, in two of the false negatives. They were initially miss-classified owing to their low abundance within a high matrix background. When the 5 undetermined samples were excluded from the analysis, the unblinded results obtained demonstrated a sensitivity of 94% (95%CI: 69.2,100) and a specificity of 100% (95%CI: 78.1,100). Figure 6 shows example chromatograms for (a) a negative sputum sample, and two positive sputum samples with a (b) high and (c) low level of PDIMs. A

further 395 sputum samples were then analyzed in a blinded fashion by THM-GC-EI/MS, based on initial classification criteria, namely the presence of doublets in the *m/z* 101 and *m/z* 88 chromatograms at the expected retention times. Results are presented in Table 1. Four samples were not determined by THM-GC-EI/MS and were excluded from further analysis as their chromatograms were uninterpretable due to overloading of the column. Of the remaining 391 samples THM-GC-EI/MS detected 68.8% (95%CI: 61.9,75) of smear positive culture confirmed cases and 25.6% (95%CI: 13.9,41.5) of smear negative cases. Sensitivity for detection of culture confirmed TB cases was 61.3% (95%CI: 54.9,67.3) and the specificity was 70.6% (95%CI: 62.3,77.8).

Following unblinding, chromatograms were re-studied to evaluate where errors had been made and whether lessons could be learnt about their misclassification. False negatives were identified where small characteristic doublet peaks had been



**Figure 5. THM-GC-EI/MS traces of TB negative sputum spiked with *M. tuberculosis* bacilli.** The chromatograms show the fragment ions *m/z* 101 and *m/z* 88 for the extract from 1 ml sample of TB negative sputum spiked with 140 CFU of *M. tuberculosis* culture. doi:10.1371/journal.pone.0032836.g005



**Figure 6. Examples of THM-GC-EI/MS chromatograms from sputum specimens from suspected TB cases.** Chromatograms show the profile of the fragment ion  $m/z$  101 in (A) negative, and positive sputum samples with (B) high, and (C) low amounts of PDIMs present. Note the characteristic doublets for the mycocerosic acid methyl esters C<sub>29</sub>/C<sub>30</sub> and C<sub>32</sub> in b–c. doi:10.1371/journal.pone.0032836.g006

missed within a high background. False positives were identified where instead of a doublet, two closely eluting peaks had actually been observed at, or close to, the anticipated retention times, or

where doublets appeared but not at the in correct retention times. To provide a more careful assessment of chromatograms, revised classification criteria were drawn up, focusing on a more stringent approach to the chromatographic alignment, and to strictly matching retention times and the doublets profiles with the daily standard runs.

A positive result was assigned to a chromatogram showing the following features:

- (i) the presence of the characteristic doublets in both  $m/z$  101 and  $m/z$  88 traces, at the retention times for both C<sub>29</sub>/C<sub>30</sub> and C<sub>32</sub>, respectively;
- (ii) the time interval between the two characteristic doublets in the sputum sample to rigorously match that in the PDIM standard daily run;
- (iii) the doublet peak at C<sub>29</sub>/C<sub>30</sub> to be comparable in size to the doublet peak at C<sub>32</sub>, in both ion chromatograms  $m/z$  101 and  $m/z$  88;
- (iv) both the  $m/z$  101 and  $m/z$  88 traces closely matching each other in shape and size.

A negative result was assigned to the following features:

- (i) the absence of one or both of the characteristic doublets at the expected retention time in the  $m/z$  101 and  $m/z$  88 ion chromatograms;
- (ii) the presence of a single peak at either of the expected retention times in the  $m/z$  101 and  $m/z$  88 ion chromatograms;
- (iii) the presence of two closely eluting, but distinct peaks, instead of doublets, at either of the expected retention times in the  $m/z$  101 and  $m/z$  88 ion chromatograms;
- (iv) a time interval between the suspected C<sub>29</sub>/C<sub>30</sub> and C<sub>32</sub> signals not matching rigorously that in the daily standard run;
- (v) the doublets at C<sub>29</sub>/C<sub>30</sub> and at C<sub>32</sub> are not comparable in size
- (vi) the traces of  $m/z$  101 and  $m/z$  88 ion chromatograms do not match each other in shape and size.

The chromatograms were then re-blinded and examined by a newly trained analyst, with no prior contact with the data. Data obtained are presented in Table 2. This approach resulted in the detection of 74.1% (95%CI: 67.5,79.9) of smear positive culture confirmed cases and 20.9% of smear negative cases (95%CI: 10.6,36.5). Its overall sensitivity relative to culture was 64.9% (95%CI: 58.6,70.8) and the specificity was 76.2% (95%CI: 68.2,82.8).

**Table 1. Performance of THM-GC-EI/MS compared to smear microscopy and culture on Lowenstein-Jensen for detection *M. tuberculosis* in 395 sputum samples.**

	Culture positive Smear positive	Culture positive Smear negative	Culture negative	Total samples
THM-GC-EI/MS positive	141	11	42	194
THM- GC-EI/MS negative	64	32	101	197
Indeterminate <sup>#</sup>	1	1	2	4
<b>Total samples</b>	<b>206</b>	<b>44</b>	<b>145</b>	<b>395</b>

<sup>#</sup>Four samples were not determined due to overloading of the GC column and were excluded from further analysis.

doi:10.1371/journal.pone.0032836.t001

**Table 2.** Secondary analysis of the performance of THM-GC-EI/MS compared to smear microscopy and culture on Lowenstein Jensen.

	Culture positive Smear positive	Culture positive Smear negative	Culture negative	Total samples
THM-GC-EI/MS positive	152	9	34	195
THM-GC-EI/MS negative	53	34	109	196
Indeterminate <sup>#</sup>	1	1	2	4
<b>Total samples</b>	<b>206</b>	<b>44</b>	<b>145</b>	<b>395</b>

A refined algorithm for interpreting the THM-GC-EI/MS chromatograms, developed by using knowledge from an initial analysis of 395 samples, was applied in a second round of blinded analysis by a newly trained operator.

<sup>#</sup>Four samples were not determined due to overloading of the GC column and were excluded from further analysis.

doi:10.1371/journal.pone.0032836.t002

## Discussion

This study has demonstrated the use of mycocerosic acids as a biomarker for diagnosis of tuberculosis disease from sputum. In principle, the method involves preferential extraction of the apolar PDIM waxes into PE solution and the PDIMs are then heated with methanolic TMAH in the inlet of the GC-MS instrument. This alkaline reagent hydrolyzes the PDIMs to yield tetramethylammonium salts of the mycocerosic acids, which pyrolyse to produce methyl mycocerosates with the molecular formulae shown in Figure 1 [13]. For fatty acids with methyl branches in the 2- and 4-positions the alkaline hydrolysis randomizes the natural configuration at position 2 in a process known as “racemisation”. The configuration at position 4 is not disturbed, so the interaction between the methyl branches at positions 2 and 4 can occur in two ways, producing physically distinct compounds, termed “diastereoisomers”. These components are readily separated on the GC column (Figure 2); for example, the first C<sub>32</sub> mycocerosate peak is the natural acid followed by similar proportions of the racemised acid. Such double peaks are a diagnostic feature for 2,4-dimethyl-branched fatty acids, such as the mycocerosates (Figure 1). The two peaks for the C<sub>29</sub>/C<sub>30</sub> mycocerosate are actually two overlapping doublets for each separate mycocerosate; the additional methyl branch in the larger C<sub>30</sub> mycocerosate increases its volatility so that it co-elutes with the smaller C<sub>29</sub> component.

In the bacteria culture studied, methyl mycocerosates were detected in PE extracts from sputum samples spiked at a level of 140 CFU mL<sup>-1</sup>, suggesting a sensitivity considerably greater than that of smear microscopy which is estimated to require 10<sup>4</sup> CFU mL<sup>-1</sup> [15,16]. When testing the sputum samples it was necessary to concentrate the sputum deposit and extract the samples. We applied the standard decontamination procedures used in diagnostic culture laboratories and heat treated samples to sterilize and allow safe handling in the open laboratory. We then applied a simple extraction of the apolar lipids prior to analysis by THM-GC-EI/MS. Initial analysis of 40 sputum samples taken from TB suspects with well defined clinical and bacteriological outcomes provided interpretable results from 35 (87.5%) samples. Following unblinding of the microbiological data, improved assignment was possible and results were obtained from 92.5% of samples tested with a further 2 samples identified as THM-GC-EI/MS positives, suggesting that high sensitivity was achievable. When the assay was evaluated with a larger set of sputum specimens in a blinded fashion, interpretable THM-GC-EI/MS results were obtained for 391/395 (99%) of samples. However, the initial performance of the assay demonstrated reduced sensitivity of 61.3% and reduced specificity of 70.6%. Examination of unblinded results from the 395 samples made it possible to enhance the classification criteria

for interpreting the THM-GC-EI/MS chromatograms. When mycocerosates are present well above the matrix then a strong pair of doublets signal is generated and the above decision process is straight forward, similarly for negative samples which have a clean chromatogram. However, for samples where results are not visually obvious a more rigorous method of assignment was developed. Training of a new operator using the refined algorithm resulted in an improved sensitivity and specificity of 64.9 and 76.3% respectively. Although a proportion (20.9%) of smear negative culture positive cases were identified the detection rate for smear positive cases of less than 75% is considered suboptimal for the diagnosis of tuberculosis. It should be noted that the smear positivity rate of 82.7% of culture confirmed cases observed in this study is usually high for a sub Saharan African setting where co-infection with HIV is common. In Zimbabwe during 2009, the estimated smear positivity rate in new pulmonary cases was 29% [1]. Following unblinding of the microbiological results, further analysis suggested that the performance of the THM-GC-EI/MS assay was being compromised due to the high background signal in some samples. This was highly variable between samples and may have been due to compounds of bacterial or human origin. High levels of matrix compounds affect the performance of the GC-MS instrument and its ability to separate compounds at trace levels, also causing column overloading and blockages. In addition to overloading the analytical capacity for individual samples, the buildup of contamination within the injector, column and MS may occur, necessitating periodic cleaning if large numbers of samples are to be processed. To improve sensitivity, further optimization of the sample preparation would be required to produce a cleaner sample. Despite this, we have shown that THM-GC-EI/MS can detect mycocerosic acids present in clinical sputum samples. The time of the analysis was approximately two hours per sample and sample handling was minimized by the use of online hydrolysis and methylation. An attempt to use thermochemolysis for the detection of *M. tuberculosis* directly in sputum, has been described previously where the target was tuberculostearic acid (TBSA) [17]. Mycocerosic acids are a more suitable diagnostic biomarker for *M. tuberculosis* than TBSA. Firstly, TBSA is less specific and present in the bacteria belonging to the Actinomycetales which include *Nocardia* and most mycobacteria. Secondly, TBSA is found in several components in the cell membrane, which requires complicated chemical extraction methods to release it, whereas PDIM waxes have the advantage of being selectively extracted from decontaminated sputum samples. Thirdly, TBSA is difficult to identify because its branched C<sub>19</sub> structure makes it hard to separate it from stearic acid (C<sub>18</sub>) and similar acids; techniques, such as column switching multi-dimensional GC, may be necessary [5]. The mycocerosic acid methyl esters separate in an

area of the chromatogram where there are fewer other compounds present and are more easily observed because the C<sub>29</sub>, C<sub>30</sub> and C<sub>32</sub> components appear as two characteristic doublet peaks. An alternative GC-MS method for detecting mycocerosic acids uses negative-ion chemical ionization (NICI) of pentafluorobenzyl esters in sputum [10]. This method requires separate hydrolysis and derivatisation which is slow and laborious. Similarly, another complicated process, involving PDIMs isolation and hydrolysis, permitted detection of sputum mycocerosates by electron capture GC [5].

In order for an assay to be deployable in a routine diagnostic laboratory, the extraction required must be simple, and the analysis rapid and robust. Direct analysis of the sputum may be performed using THM-GC-EI/MS (data not shown) but the heterogeneity of the sample and high levels of background contamination discourages this approach. The application of liquid/liquid extraction of apolar lipids is attractive due to its simplicity and potential for automation but our data suggest that further clean up is necessary. Solid phase extraction (SPE) of the PDIMs may improve sample quality and reduce the burden on the analytical instrument from the matrix compounds. When compared to culture THM-GC-MS methods offer rapid testing with the potential to provide 'same day' analysis. They also reduce the necessity to handle infectious materials. Amplification of nucleic acids offers an alternative rapid test system. The recently launched Xpert MTB/RIF assay (Cepheid, Sunnyvale, USA) allows sensitive detection of *M. tuberculosis* DNA in less than two hours [18,19]. However, the anticipated running costs are substantial: approximately USD 21 per test in the public sector of TB endemic countries [20] and considerably higher in the private sector or industrialized countries. Should it prove sufficiently sensitive and robust, through sample extraction optimization, then THM-GC-EI/MS may provide a cost effective alternative. However, the high cost of the instrumentation and use of organic solvents may limit application in developing country laboratories.

## Materials and Methods

### Ethical approval

The study and collection of samples at the Beatrice Road Infectious Diseases Hospital was reviewed and approved by the National Ethics Committee of the Medical Research Council of Zimbabwe, Harare, Zimbabwe, the Institutional Review Board of Biomedical Research and Training Center, Harare, Zimbabwe, and the Research Ethics Committee of the London School of Hygiene and Tropical Medicine, London, UK. Informed written consent was obtained from all patients who enrolled in the study.

### PDIM standards

The PDIM waxes were extracted and purified from *M. tuberculosis* strain C [11] according to the procedures described by Dobson *et al.* [12]. In essence, non-polar lipids were extracted from freeze-dried biomass using a biphasic mixture of petroleum ether and aqueous methanol. The main component of the PDIMs, based on phthiocerol A [8], was purified from the petroleum ether extract by preparative thin-layer chromatography [7].

### *M. tuberculosis* culture

*M. tuberculosis* H37Rv (laboratory strain) was cultured in 10 mL Middlebrook 7H9 broth, containing 0.2% Tween 80 (BDH Becton Dickinson Diagnostic Systems, Sparks, MD) and 10% albumin dextrose catalase enrichment (Becton Dickinson Diagnostic Systems, Sparks, MD) at 37°C for 10 days. Following this,

cells were harvested and re-suspended in sterile distilled water. A Miles and Misra plate count was performed [21] and the colony forming units (CFU) were estimated.

### Clinical Samples

Sputum samples were collected from TB patients and suspects presenting at Beatrice Road Infectious Diseases Hospital in Harare, Zimbabwe as described by Mutetwa *et al.* [22]. Sputum specimens were homogenized by vortexing with 4 mm beads, and then split into two; one sample was used for smear microscopy and culture. Fluorescent smear microscopy (auramine O) was undertaken with positive samples confirmed by Ziehl-Neelsen (ZN) staining. Positive cultures on Lowenstein Jensen were confirmed as *M. tuberculosis* complex by MPB64 antigen detection (Capillia™, Becton Dickinson, Sparks, MD, USA). The second aliquot of sputum was stored frozen prior to shipment to London where they were stored at -80°C prior to analysis by THM-GC-EI/MS. The allocation of aliquots to either process was randomized to control operator bias. Clinical and microbiological data were not revealed to those undertaking the PDIMs analysis.

Sputum samples were processed in two batches; the first panel (the test batch) consisted of 40 samples (20 smear positive culture positive and 20 smear and culture negative), and the second panel (the evaluation batch) consisted of 395 samples. Samples were processed using a standard protocol routinely applied to sputum prior to culture [14]. In brief, 0.5 mL of 4% sodium hydroxide was added to 0.5 mL of each sample. Following mixing, samples were left to stand for 20 min at room temperature with periodic vortexing, after which an equal volume of neutralization buffer was added (140 g/L potassium phosphate monobasic and 8 mL 1% phenol red). The mixtures were centrifuged at 3000 g for 30 min. The supernatants were decanted and the pellets re-suspended in 10 mL sterile distilled water. Centrifugation was repeated and the supernatants decanted leaving behind deposits (approximately 1 mL). The deposits were heated in a water bath at 100°C for 30 min, in order to sterilize the samples. Deposits were further concentrated by centrifugation at 14,000 g for 15 min, leaving 0.2 mL deposits for subsequent apolar lipid extraction.

### Apolar Lipid Extraction

The apolar lipids from dilutions of *M. tuberculosis* culture and sputum specimens were extracted using a modified method from Dobson *et al.* [12]. To 0.2 mL of deposit, 1.8 mL methanol and 1 mL petroleum ether 60–80°C (PE) were added and mixed on a tube rotator for 15 min. After centrifugation at 1,200 g for 1 min, the upper PE layer, containing the apolar lipids, was removed and stored at 4°C.

Prior to analyzing the sputum samples, the performance of the thermochemolysis and the extraction of PDIMs were evaluated using samples spiked with PDIMs or bacteria harvested from culture. Aliquots of negative pooled sputum (0.2 mL) were spiked with a PDIMs standard (140–27,500 pg of total PDIMs). Each spiked sample was vortexed for 30 seconds and then the apolar lipids were extracted, following the procedure described above. Assuming an extraction efficiency of 100%, then this would be equivalent to a concentration range of PDIMs between 140–27,500 pg/mL of petroleum ether. Hence the total quantity of PDIMs analysed ranged between 7–1,375 pg/liner. *M. tuberculosis* culture (140–5,600 CFU/mL) was spiked into 1 mL aliquots of negative pooled sputum. Each sample was vortexed and centrifuged at 14,000 g for 15 min. The supernatant was discarded, leaving behind 0.2 mL deposit for apolar lipid extraction.

## Thermochemolysis and GC-EI/MS analysis

The equipment used was an Agilent 7890A GC coupled to a 5975C quadrupole MS, with an electron impact (EI) ionization source set at 70 eV impact energy and 35  $\mu$ A emission current. A PAL-CTC autosampler, modified with a LINEX liner exchanger, was used in conjunction with an Optic3 programmable temperature vaporization (PTV) inlet. Testing of sputum extracts was performed blinded with THM-GC-EI/MS operators not aware of the microbiological and clinical data.

Fifty microlitres of the PE extract or of the PDIM solutions were manually applied to a quartz wool plug inside the Optic glass liner and dried at 60–70°C for 10 min. The liners were then loaded into the autosampler. Following automated injection of 50  $\mu$ L methanolic tetramethylammonium hydroxide (TMAH) (12.5%), derivatization of lipids was performed in the Optic3 PTV inlet at 380°C. The GC analysis was carried out on a DB-5MS capillary column (15 m $\times$ 0.25 mm $\times$ 0.25  $\mu$ m) (Agilent Technologies, UK) with a temperature program of 50°C (8 min) to 350°C (1 min) @ 30°C/min, and a carrier gas flow rate of 1.4 mL of helium per min.

The mass spectrometer was operated in selected ion monitoring (SIM) mode. The target compounds were detected by monitoring for the largest fragment ions at  $m/z$  88 and 101, which are characteristic for all derivatised mycocerosates [10], and the molecular ions  $m/z$  452 ( $C_{29}$ ), 466 ( $C_{30}$ ) and 494 ( $C_{32}$ ) (Figure 1).

## References

- World Health Organisation (2010) Global tuberculosis control:WHO Report 2010. Geneva.
- McNerney R, Daley P (2011) Towards a point-of-care test for active tuberculosis: obstacles and opportunities. *Nat Rev Microbiol* 9: 204–213.
- Balabanova Y, Drobniewski F, Nikolayevskyy V, Kruuner A, Malomanova N, et al. (2009) An integrated approach to rapid diagnosis of tuberculosis and multidrug resistance using liquid culture and molecular methods in Russia. *PLoS One* 4: e7129.
- Redman JE, Shaw MJ, Mallet AI, Santos AL, Roberts CA, et al. (2009) Mycocerosic acid biomarkers for the diagnosis of tuberculosis in the Coimbra Skeletal Collection. *Tuberculosis (Edinb)* 89: 267–277.
- Minnikin DE, Bolton RC, Hartmann S, Besra GS, Jenkins PA, et al. (1993) An integrated procedure for the direct detection of characteristic lipids in tuberculosis patients. *Ann Soc Belg Méd Trop* 73 Suppl 1: 13–24.
- Daffé M, Lanéelle MA (1988) Distribution of phthiocerol diester, phenolic mycosides and related compounds in mycobacteria. *J Gen Microbiol* 134: 2049–2055.
- Minnikin DE, Dobson G, Goodfellow M, Magnusson M, Ridell M (1985) Distribution of some mycobacterial waxes based on the phthiocerol family. *J Gen Microbiol* 131: 1375–1381.
- Minnikin DE, Kremer L, Dover LG, Besra GS (2002) The methyl-branched fortifications of *Mycobacterium tuberculosis*. *Chem Biol* 9: 545–553.
- Minnikin DE, Besra GS, Bolton RC, Datta AK, Mallet AI, et al. (1993) Identification of the leprosy bacillus and related mycobacteria by analysis of mycocerosate profiles. *Ann Soc Belg Méd Trop* 73 Suppl 1: 25–34.
- Alugupalli S, Sikka MK, Larsson L, White DC (1998) Gas chromatography mass spectrometry methods for the analysis of mycocerosic acids present in *Mycobacterium tuberculosis*. *J Microbiol Methods* 31: 143–150.
- Mallet AI, Minnikin DE, Dobson G (1984) Gas-Chromatography Mass-Spectrometry of *tert*-Butyldimethylsilyl Ethers of Phthiocerols and Mycocerosic Alcohols from *Mycobacterium tuberculosis*. *Biomed Mass Spectrom* 11: 79–86.
- Dobson G, Minnikin DE, Minnikin SM, Parlett JH, Goodfellow M, et al. (1985) Systematic analysis of complex mycobacterial lipids. In: Goodfellow M, Minnikin D, eds. *Chemical Methods in Bacterial Systematics*. London: Academic Press. pp 237–265.
- Dworzanski JP, Berwald L, Meuzelaar HLC (1990) Pyrolytic Methylation Gas-Chromatography of Whole Bacterial-Cells for Rapid Profiling of Cellular Fatty-Acids. *Appl Environ Microbiol* 56: 1717–1724.
- Petroff SA (1915) A New and Rapid Method for the Isolation and Cultivation of Tubercle Bacilli Directly from the Sputum and Feces. *J Exp Med* 21: 38–42.
- Hobby GL, Holman AP, Iseman MD, Jones JM (1973) Enumeration of tubercle bacilli in sputum of patients with pulmonary tuberculosis. *Antimicrob Agents Chemother* 4: 94–104.
- Yeager H, Jr., Lacy J, Smith LR, LeMaistre CA (1967) Quantitative studies of mycobacterial populations in sputum and saliva. *Am Rev Respir Dis* 95: 998–1004.
- Kaal E, Kolk AH, Kuijper S, Janssen HG (2009) A fast method for the identification of *Mycobacterium tuberculosis* in sputum and cultures based on thermally assisted hydrolysis and methylation followed by gas chromatography-mass spectrometry. *J Chromatogr A* 1216: 6319–6325.
- Helb D, Jones M, Story E, Boehme C, Wallace E, et al. (2010) Rapid detection of *Mycobacterium tuberculosis* and rifampin resistance by use of on-demand, near-patient technology. *J Clin Microbiol* 48: 229–237.
- Boehme CC, Nicol MP, Nabeta P, Michael JS, Gotuzzo E, et al. (2011) Feasibility, diagnostic accuracy, and effectiveness of decentralised use of the Xpert MTB/RIF test for diagnosis of tuberculosis and multidrug resistance: a multicentre implementation study. *Lancet* 377: 1495–1505.
- World Health Organisation (2011) Rapid implementation of the Xpert MTB/RIF diagnostic test. Geneva: WHO.
- Miles AA, Misra SS, Irwin JO (1938) The estimation of the bactericidal power of the blood. *J Hyg (Lond)* 38: 732–749.
- Mutetwa R, Boehme C, Dimairo M, Bandason T, Munyati SS, et al. (2009) Diagnostic accuracy of commercial urinary lipoarabinomannan detection in African tuberculosis suspects and patients. *Int J Tuberc Lung Dis* 13: 1253–1259.

Quantification of the mycocerosic acid methyl esters was performed by measuring the areas of the target peaks in the chromatogram for the  $m/z$  101 fragment ion. The quantitative analyses are with respect to the total amount of PDIMs present which includes the abundance of the  $C_{29}/C_{30}$  and  $C_{32}$  peaks. Throughout this paper, all the data analysis and interpretation were done based on visual examination, and by using the integration facility in Agilent ChemStation. As part of the data interpretation, the sample chromatograms were aligned with the daily run of PDIMs standard, the retention times (RT) were examined for chromatographic drifting, and were corrected if necessary.

## Acknowledgments

We thank the participants and the staff of Beatrice Road Infectious Disease Hospital for their cooperation with the study.

## Author Contributions

Conceived and designed the experiments: R. McNerney ELC GHM DEM. Performed the experiments: DO SCN SM. Analyzed the data: SCN GHM R. McNerney R. Mutetwa MWB. Contributed reagents/materials/analysis tools: OL SM DEM R. Mutetwa. Wrote the paper: R. McNerney DO SCN DEM GHM.