

# Long-term lead elimination from plasma and whole blood after poisoning

Gerda Rentschler · K. Broberg · T. Lundh · S. Skerfving

Received: 29 November 2010 / Accepted: 14 June 2011 / Published online: 24 June 2011  
© The Author(s) 2011. This article is published with open access at Springerlink.com

## Abstract

**Objective** Blood lead (B–Pb), one of the most used toxicological biomarker all kind, has serious limitations. Thus, the objective is to evaluate whether plasma lead (P–Pb) is more adequate.

**Methods** A long-term follow-up study of five cases of lead poisoning. P–Pb was analysed by inductively coupled plasma mass spectrometry. Kinetics after end of exposure was modelled.

**Results** P–Pb at severe poisoning was about 20 µg/L; haematological effects at about 5 µg/L. Biological half-time of P–Pb was about 1 month; B–Pb decay was much slower.

**Conclusion** P–Pb is a valuable biomarker of exposure to and risk, particularly at high exposure.

**Keywords** Human · Urine · Pb · Kinetics · Modelling · Risk

## Introduction

The lead (Pb) concentration in whole blood (B–Pb) is probably—next to ethanol in blood—the most widely used biomarker for assessment of toxic exposure and risk. However, it has clear limitations, in particular because

there is saturation with increasing exposure, in particular at B–Pbs > 700 µg/L (Bergdahl et al. 1999), and because Pb induces anaemia (Skerfving and Bergdahl 2007), which will make the use of B–Pb problematic, because Pb is mainly present in erythrocytes, the volume of which will decrease. Pb in plasma (P–Pb) or serum is an attractive alternative, which would avoid these problems (Schütz et al. 1996; Costa de Almeida et al. 2010; Montenegro et al. 2006; Hirata et al. 1995). The concentrations are very low, but the developments in analytical technique now allow adequate determination. However, P–Pb has up to now been used only occasionally.

There are indications that the toxicokinetics of Pb are affected by genetic polymorphism in the enzyme  $\delta$ -amino-levulinic acid dehydratase (ALAD), which is the main binding site for Pb in erythrocytes, and inhibition of which is at least partly responsible for the anaemic effect of Pb (Skerfving and Bergdahl 2007).

In spite of centuries of preventive attempts, Pb is still a major health problem. It induces clinical poisoning in occupational settings, but sometimes also by other exposures (Skerfving and Bergdahl 2007).

The aim of this study was to scrutinise the usability of P–Pb as a biomarker in cases of clinical Pb poisoning.

## Subjects and methods

### Cases

We evaluated data from five cases of clinical Pb poisoning, four non-occupational and one occupational (Table 1). They had been exposed to Pb for 1 month–12 years. The intakes of Pb were estimated by self-reported consumption of tablets or drink, and the measured contents of Pb in

G. Rentschler (✉) · K. Broberg · T. Lundh · S. Skerfving  
Division of Occupational and Environmental Medicine,  
Lund University, SE-221 85 Lund, Sweden  
e-mail: Gerda.Rentschler@med.lu.se

**Table 1** Histories of five cases of lead poisoning

Case	Sex	Genotype ALAD G379C	Age	Lead exposure		Duration	Estimated daily intake (mg)	Time from end of exposure to sampling/ diagnosis (d)	Blood haemo-globin (g/L)	Symptoms and signs			Follow-up time (mo)
				Source	Lead exposure					Gastro- intestinal	Fatigue	Other	
1	F	GG	47	Ceramic	34 day	48 <sup>a</sup>		1	92 <sup>b</sup>	++	++	–	33
2	M	GG	59	Ceramic	46 day	10 <sup>a</sup>		12	108	+	++	Weakness	34
3	F	GG	57	Ayurvedic prep.	23 month	33		74	111 <sup>b</sup>	++	+++	Insomnia Depression	40
4	M	GG	19	Ceramic	3 month	14 <sup>a</sup>		5	139	++	+	Pain	35
5	M	CG	49	Polyvinyl chloride—and storage battery factories	12 year	Unknown		1	92 <sup>b</sup>	+++	++	Gingival Pb line Weight loss Pain Peripheral neuropathy	316

M Male, F Female. + to +++ denotes severity of clinical symptoms/signs, – lack of such

<sup>a</sup> Based on intake of and level in juice eluted for 8 h. In standard procedure with 2% acetic acid for 24 h were the levels 150–860 mg

<sup>b</sup> Microcytic sideroblastic anaemia in bone marrow biopsy

those media. Four had anaemia. They were followed for 21–316 months. In all subjects, the symptoms and signs disappeared during the initial part of the follow-up.

Blood and urine for Pb and haemoglobin (B-Hb) determinations were sampled daily during the first week(s), later on weekly, monthly or more rarely.

All cases gave written informed consent for the use of their data for this study. Because of uncertainty in the diagnosis, and whether the exposure had ceased, frequent sampling was made initially.

## Analyses

### Lead

Cubital venous blood was collected in evacuated metal-free heparinised tubes. To obtain plasma, the tubes were centrifuged at 2,000g for 10 min. Samples with haemolysis at inspection were deleted. In connection with most blood sampling occasions, spot urine samples were collected in 10 mL polypropylene tubes the same day or the day before.

All samples, but those from case 5, were analysed by inductively coupled plasma–mass spectrometry (ICP-MS; Barany et al. 2002); for the samples from case 5, electro thermal atomic absorption spectrometry (ETA-AAS) was used. All samples were prepared in duplicate.

Quality control was strict, especially at method changes (ETA-AAS vs. ICP-MS,  $r = 0.98$ ,  $n = 29$ ; Strömberg et al. 2008). The analytical accuracy was checked against reference material, (Serorm, SERO AS, Billingstad, Norway) with the recommended values for lead in blood, plasma and urine being 393, 0.9 and 40  $\mu\text{g/L}$ , respectively. Our results for the lead determination in the reference samples during the follow-up time were 98, 106 and 101% for blood, plasma and urine, respectively. Our laboratory is accredited for lead analysis in blood according to the Swedish Board for Accreditation and Conformity Assessment (SWEDAC), and during the period, we also produced good results in the UK National External Quality Assessment Service (Birmingham, UK); our mean accuracy was 96% with coefficient of variation <5%.

### Other

Blood haemoglobin (B-Hb) was analysed by a standard clinical method. Creatinine (crea) was analysed in urine samples by a modified kinetic Jaffé method (Roche Diagnostics, Mannheim, Germany). Both B-Hb and crea were analysed by an accredited clinical laboratory with scrupulous quality control. Detection limit for crea was 0.1 mmol/L and total imprecision 1.6%. For B-Hb measurements, the imprecision within the working range of 1–250 g/L was  $\leq 1.0\%$ .

## Toxicokinetic modelling

Non-linear regression analysis was performed with SPSS version 15.0, according to Eq. (1). The first exponential term describes the fast elimination phase, the second one, the slow elimination of Pb.

$$C_{\text{Pb}}(t) = C_1 * e^{(-R_1 * t)} + C_2 * e^{(-0.000146 * t)} \quad (1)$$

$C_{\text{Pb}}(t)$ , lead concentration at a given time ( $\mu\text{g/L}$ ),  $t$ , time (days),  $C_1$ , constant (concentration of the fast phase at  $t = 0$ ),  $C_2$ , constant (concentration of slow phase at  $t = 0$ ),  $R_1$ , elimination constant of phase 1 ( $\text{days}^{-1}$ ).

The follow-up time was not sufficient to calculate the half-time in the slow phase. Nilsson et al. (1991) found it to be 13 years in a long-term study of Pb workers. Therefore, that value was used. The sum of  $C_1$  and  $C_2$  describes the modelled Pb content at the end of exposure ( $t = 0$ ). The half-time of Pb in the fast phase has been calculated according to Eq. (2).

$$T_{1/2} = \ln 2 / R_1 \quad (2)$$

For three cases, there were sufficient data to describe the relationship between B-Hb and P-Pb after end of exposure. Inspection of the curves (Fig. 4) indicated that one component did not give a satisfactory fit. Regression lines were calculated on the left and right sides of the division line ( $x = 5 \mu\text{g P-Pb/L}$ ), and statistical significance of the difference between the pairs of slopes was examined. After that the threshold between the two components was calculated as the crossing point of the two lines.

## Genotyping

DNA was isolated from whole blood by minicolumn purification (E.Z.N.A DNA extraction kit, Omega Bio-Tek, Norcross, GA, USA) and diluted to a concentration of  $5 \text{ ng}/\mu\text{L}$ . The *ALAD* G379C polymorphism (Asn59Lys, rs1800435) was genotyped by Taqman allelic discrimination assay (ABI 7000 instrument, Applied Biosystems, Foster City, CA, USA), using the following primers and probes for *ALAD*: primers forward: 5'-TGC CTT CCT TCA ACC CCT CTA-3' and reverse: 5'-CCA AGG GCC TCA GCA TCT C-3'; MGB-probes: *ALAD*-G: 5'-Fam-TGT GAA GCG GCT GG-3' and *ALAD*-C: 5'-Vic-TGT GAA CCG GCT GG-3'. The total volume of the PCR was  $25 \mu\text{L}$ . Primers were added to a final concentration of  $0.05 \mu\text{M}$ , probes to  $0.9 \mu\text{M}$  in an 80% concentrated TaqMan Universal PCR Master Mix (Applied Biosystems, Foster City, CA, USA). The PCR samples were incubated at  $50^\circ\text{C}$  for 2 min and at  $95^\circ\text{C}$  for 10 min. The samples underwent 40 cycles of 15 s at  $95^\circ\text{C}$  and 1 min at  $60^\circ\text{C}$ . Controls for each genotype as well as

blanks were included in each run. Samples were analysed in duplicate and concordance rate was 100%.

## Results

The median P-Pb at first sampling (median 5, range 1–74 days after end of exposure) was 17 (range 2–42)  $\mu\text{g/L}$  (Fig. 1a). The modelled median value for P-Pb ( $C_1 + C_2$ ) was 23 (range 3–38)  $\mu\text{g/L}$  at time  $t = 0$ . In Cases 1–4, the median of  $C_2$  was 0.65 (range 0.6–0.8)  $\mu\text{g/L}$ , in Case 5 1.6  $\mu\text{g/L}$ .

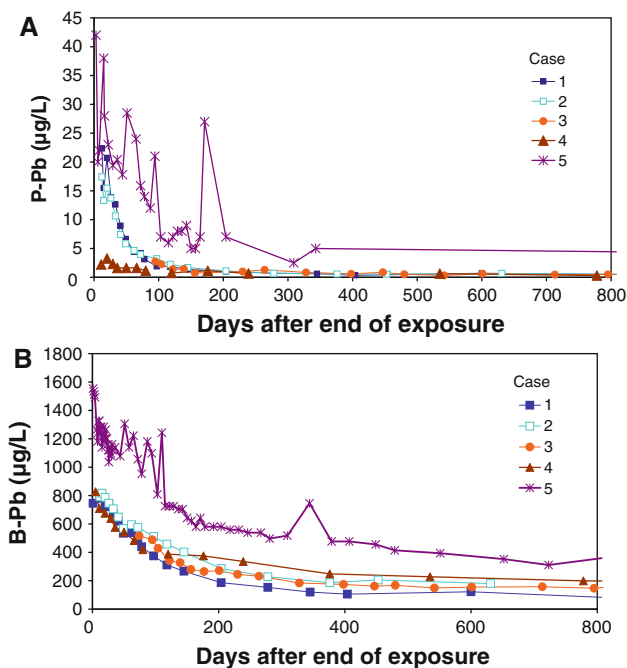
In the two-compartment model, the median biological  $T_{1/2}$  of the fast P-Pb phase was 27 (23–69) days (Table 2).

The median B-Pb at first sampling was 790 (520–1,600)  $\mu\text{g/L}$  (Fig. 1b). The modelled median value for B-Pb ( $C_1 + C_2$ ) was 840 (range 790–1,300)  $\mu\text{g/L}$  at time  $t = 0$ . In Cases 1–4, the median of  $C_2$  was 155 (range 83–230)  $\mu\text{g/L}$  and in Case 5, it was 290  $\mu\text{g/L}$ .

Median  $T_{1/2}$  for the fast B-Pb component was 77 (58–120) days (Table 2).

The relationship between B-Pb and P-Pb was approximately linear at low levels (ratio about 100); at P-Pbs above about  $5 \mu\text{g/L}$ , the B-Pb levelled off (Fig. 2). In Cases 1 and 2, the ratio at the highest P-Pbs was about 40, in Case 5, it was about 60.

There seemed to be a rectilinear relationship between U-Pb and P-Pb; the former expressed as  $\mu\text{g/g}$  crea was

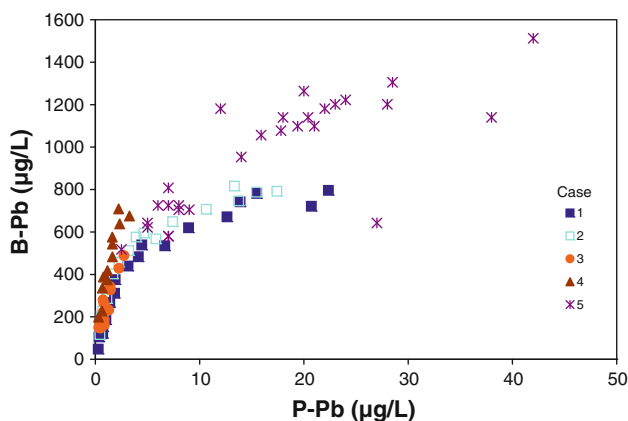
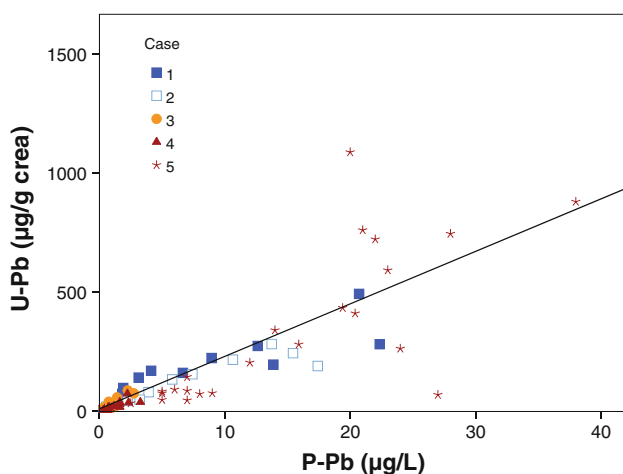


**Fig. 1** Lead elimination from plasma (P-Pb; a) and whole blood (B-Pb; b) during the first 800 days after end of exposure in five cases of poisoning

**Table 2** Two-compartment modelling of lead in plasma and whole blood after end of exposure in five cases of lead poisoning

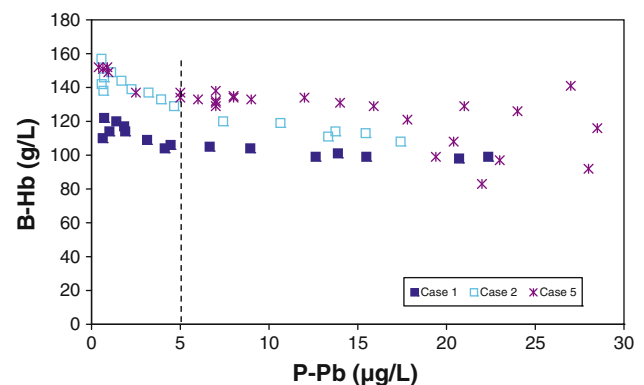
Case	Plasma			Whole blood		
	First component		Second component	First component		Second component
	$C_1$ (CI) ( $\mu\text{g/L}$ )	$T_{1/2}$ (CI) (d)	$C_2$ (CI) ( $\mu\text{g/L}$ )	$C_1$ (CI) ( $\mu\text{g/L}$ )	$T_{1/2}$ (CI) (d)	$C_2$ (CI) ( $\mu\text{g/L}$ )
1	30 (25, 35)	23 (18, 30)	0.6 (0.0, 1.8)	770 (720, 810)	77 (63, 87)	83 (41, 120)
2	22 (19, 25)	27 (22, 35)	0.8 (0.0, 1.6)	700 (660, 750)	87 (77, 120)	140 (120, 190)
3	37 (0, 91)	23 (15, 43)	0.7 (0.5, 0.8)	660 (640, 1,100)	58 (46, 77)	170 (170, 190)
4	3 (2, 4)	46 (24, 350)	0.6 (0.3, 1.1)	560 (500, 620)	63 (46, 87)	230 (190, 270)
5	30 (23, 37)	69 (46, 170)	1.6 (0.0, 7.2)	1,100 (1,000, 1,100)	120 (120, 140)	290 (250, 330)

$C_1$  and  $C_2$  are concentrations at  $t = 0$  for the fast and slow components.  $T_{1/2}$  half-time. CI 95% confidence interval

**Fig. 2** Relationship between lead levels in whole blood (B-Pb) and plasma (P-Pb) in sequential samples from five cases of poisoning**Fig. 3** Relationship between lead levels in urine (U-Pb) and plasma (P-Pb) in sequential samples from five cases of poisoning. The association between U-Pb and P-Pb follows the equation  $U-Pb = 12 + 22 \cdot P-Pb$ 

22 times higher than the latter ( $R^2$  linear = 0.5;  $p < 0.001$ ), expressed as  $\mu\text{g/L}$  (Fig. 3).

The median B-Hb rose after end of exposure, from a median of 108 (range 92–139) g/L (Table 1) at the time of the first blood sampling to 138 (122–155) g/L at end of

**Fig. 4** Relationship between haemoglobin levels in blood (B-Hb) and lead in plasma (P-Pb) in sequential samples from three cases of poisoning

follow-up (not in table). In all patients, B-Hb values recovered to a stable level for each individual within a median time of 176 (range 145–230) days.

In three cases, there was sufficient information for a meaningful study of the relationship between B-Hb and P-Pb (Fig. 4). The association seemed to have two components, an initial fast increase at relatively low P-Pbs, and a slower one at high ones (all Ps for pairs of regression lines  $\leq 0.01$ ). The threshold P-Pb between the two components was calculated at 4.3, 6.6 and 5.0  $\mu\text{g/L}$ , in Cases 1, 2 and 5, respectively.

Case 5, who was the only heterozygote for *ALAD* G379C (earlier denoted as *ALAD* 1–2; Table 1), had the longest  $T_{1/2}$  for B-Pb, as compared to the others, who were homozygotes for the more common G-allele, while he did not differ from the others in P-Pb kinetics (Table 2). Also, he had higher initial both B-Pb and P-Pb (Fig. 1), and a higher B-Pb/P-Pb ratio (Fig. 2).

## Discussion

The most important finding was that P-Pb at poisoning was about 20  $\mu\text{g/L}$ . Biological half-time of P-Pb was about

1 month; decay in B–Pb was much slower. P–Pb displayed a non-linear relationship with B–Pb, but rectilinear with U–Pb.

The number of cases was small; in particular, we had only three cases with valid information on long-term B–Hb, which must be taken into consideration when drawing conclusions.

Since Pb content in red blood cells is much higher than in plasma, there is a risk that even a rather limited haemolysis, which may occur because of the haemolytic tendency at high Pb exposure, may contaminate the P–Pb. We eliminated the few plasma samples with haemolysis. A very slight red colour occurs before there is a serious problem of Pb carryover.

The present determination of P–Pb by ICP-MS was accurate. However, there is still uncertainty, which is reflected in the large confidence intervals in the estimates of kinetic parameters for P–Pb, which is wider than for B–Pb. In particular, Case 5 was studied before development of that method. Hence, ETA-AAS was used for P–Pb analyses, which was less sensitive. This is also obvious from the much greater variation of his data points in the elimination and B–Pb/P–Pb, U–Pb/P–Pb and B–Hb/P–Pb curves. This also explains why his first and third measurements are higher than the modelled  $C_1 + C_2$ . However, it is most unlikely that the analytical method explains his higher P–Pbs in general, which are more likely due to his greater skeletal Pb pool.

The elimination of Pb from both plasma and whole blood displayed at least two phases. The fast one reflects the soft tissues, the slow one the skeleton (Schütz et al. 1987; Nilsson et al. 1991). In spite of the long follow-up times, they did still not allow accurate estimates of the slow phase. Thus, we choose to use the better value obtained in our earlier study. The present P–Pbs are much higher than those in Swedes with no particular exposure (0.1–0.3 µg/L (Schütz et al. 1996; Bergdahl et al. 1999)), and remained so long after end of exposure. Therefore, we did not subtract a level in Swedish subjects without excessive exposure.

The method for determination of P–Pb with ICP-MS has been further developed. Hence, at our laboratory, the limit of detection is now 0.02 µg/L and the precision 6%. Hence, it is possible to use P–Pb as a biomarker in environmental health.

The number of cases is small, in particular we had only three cases with valid information on long-term B–Hb, which must be taken into consideration when drawing conclusions. In addition, the time of exposure and the total amount of Pb absorbed varied between the individuals; in particular, Case 5 differed. Hence, the body burden (mainly the skeletal content) of Pb differed, which will affect the elimination pattern after end of exposure (Nilsson et al. 1991). This was accounted for by the use of a two-component elimination model on an individual basis.

The relationship between the initial levels of the two components will vary depending upon the bone pool versus recent exposure. The pattern of P–Pb fits better with exposure data than B–Pb, which may be because it better reflects uptake and body burden, especially at these high uptakes. Only after careful comparison of the patterns did we merge the information into combined conclusions.

The  $T_{1/2}$  for P–Pb of about 1 month is much longer than that reported after intravenous injection of Pb salt (Campbell et al. 1984).

The present  $T_{1/2}$ s for B–Pb are longer than previously reported (Schütz and Skerfving 1976; Rabinowitz et al. 1976; Schütz et al. 1987). This is certainly because the present cases had B–Pbs much higher than in the earlier studies. Thus, our subjects initially had anaemia, with an attenuation of the rate of B–Pb decline when the effect on the blood cell formation and survival decreases as the body burden decays. Further – and more important – the curvilinear relationship between B–Pb and P–Pb, at the initial decrease of the body burden, will not be reflected in a simultaneous decay of B–Pb. Hence, our  $T_{1/2}$ s of B–Pbs are fully compatible with both the earlier reports on B–Pb and our  $T_{1/2}$ s for P–Pb. Also, the non-linear B–Pb/P–Pb relationship means that the B–Pb/P–Pb ratio will differ between individuals and over time.

In spite of the time to diagnosis being long in some of the cases, the modelling resulted in estimates of both the B–Pb and the P–Pb content at  $t = 0$ , which marked the actual end of exposure.

Poisoning with gastrointestinal, neurological and haematological symptoms and signs occurred at P–Pbs of about 20 µg/L as indicated by extrapolation of the P–Pb curves. In one of the cases (no. 4), the P–Pb at diagnosis was much lower. However, we are less certain of the relevance, since the symptoms and signs were less convincing for intoxication.

The present data clearly show the well-known anaemic effect of Pb exposure (Bergdahl et al. 2006). Previous authors have described the relationship between exposure and B–Hb by use of B–Pb as a biomarker (Gennart et al. 1992). However, this may lead to spurious results, because the effect causes a decrease of the assumed indicator of exposure/risk, caused by the anaemia-induced decrease of binding possibilities for Pb in blood, and the saturation of binding sites. Our data clearly show the usefulness of P–Pb as an indicator of the risk of haematological effects. The shape of the B–Hb/P–Pb seemed to have at least two components. This is probably because, as said above, Pb has several different modes of action: inhibition of haem synthesis, inhibition of nucleotide synthesis and haemolysis. The present data does not allow allocation of these mechanisms to the B–Hb/P–Pb curve, but it is obvious that there is a dramatic effect at a P–Pb of about 5 µg/L.



Interestingly, Case 5, who was the only heterozygote for *ALAD* G379C, had the longest  $T_{1/2}$  for B–Pb, as compared to the others, who were homozygote for the C-allele, while he did not differ from the others in P–Pb kinetics. Also, he had a higher B–Pb/P–Pb ratio and higher initial B–Pb, which is in accordance with earlier findings (Bergdahl et al. 1997; Fleming et al. 1998; Schwartz et al. 2000; Montenegro et al. 2006). However, the high B–Pb observed may be due to a higher exposure, compared to the other cases.

## Conclusions

The present B–Pbs at onset of poisoning are high, well above occupational and other biological exposure limits (Skerfving and Bergdahl 2007). However, the present results are still relevant for evaluation of cases of poisoning. It is then important to consider that B–Pb, despite being one of the most used toxicological biomarkers all kind, has serious limitations because of the saturation at high exposure. Then, P–Pb is a more adequate biomarker of Pb exposure and risk than B–Pb, which is in accordance with a closer association between P–Pb and markers of haem synthesis, as compared to B–Pb, especially at high exposure (Hirata et al. 1995). P–Pb at severe poisoning was about 20 µg/L. Biological half-time of P–Pb was about 1 month; whole blood decay was much slower. The *ALAD* genotype seemed to modify the toxicokinetics (higher level and slower elimination in whole blood), though only one of our cases was a heterozygote.

**Acknowledgments** The authors thank Ms. Anna Akantis for skilful technical assistance, Dr. Anna Oudin, Dr Med Sci and Dr. Ulf Strömberg PhD for statistical advice. This work was supported by the European Union (PHIME, contract no FOOD-CT-2006-016253). This publication reflects only the author's views; the European Community is not liable for any use that may be made of the information contained therein. Further, the work was supported by the Swedish Council for Working Life and Social Research (METALUND project), the County Councils of Southern Sweden and the Medical Faculty, Lund University.

**Conflicts of interest** The authors report no conflicts of interest. The authors alone are responsible for the content and writing of the paper.

**Open Access** This article is distributed under the terms of the Creative Commons Attribution Noncommercial License which permits any noncommercial use, distribution, and reproduction in any medium, provided the original author(s) and source are credited.

## References

Barany E, Bergdahl IA, Bratteby LE, Lundh T, Samuelson G, Schütz A, Skerfving S, Oskarsson A (2002) Relationships between trace element concentrations in human blood and serum. *Toxicol Lett* 134:177–184

- Bergdahl IA, Gerhardsson L, Schütz A, Desnick RJ, Wetmur JG, Skerfving S (1997) Delta-aminolevulinic acid dehydratase polymorphism: influence on lead levels and kidney function in humans. *Arch Environ Health* 52:91–96
- Bergdahl IA, Vahter M, Counter SA, Schütz A, Buchanan LH, Ortega F, Laurell G, Skerfving S (1999) Lead in plasma and whole blood from lead-exposed children. *Environ Res* 80:25–33
- Bergdahl IA, Gerhardsson L, Liljelind IE, Nilsson L, Skerfving S (2006) Plasma-lead concentration: investigations into its usefulness for biological monitoring of occupational lead exposure. *Am J Ind Med* 49:93–101
- Campbell BC, Meredith PA, Moore MR, Watson WS (1984) Kinetics of lead following intravenous administration in man. *Toxicol Lett* 21:231–235
- Costa de Almeida GR, de Freitas Tavares CF, de Souza AM, Sampaio de Sousa T, Rodrigues Funayama CA, Barbosa F Jr, Tanus-Santos JE, Gerlach RF (2010) Whole blood, serum, and saliva lead concentrations in 6- to 8-year-old children. *Sci Total Environ* 408:1551–1556
- Fleming DE, Chettle DR, Wetmur JG, Desnick RJ, Robin JP, Boulay D, Richard NS, Gordon CL, Webber CE (1998) Effect of the delta-aminolevulinic acid dehydratase polymorphism on the accumulation of lead in bone and blood in lead smelter workers. *Environ Res* 77:49–61
- Gennart JP, Bernard A, Lauwerys R (1992) Assessment of thyroid, testes, kidney and autonomic nervous system function in lead-exposed workers. *Int Arch Occup Environ Health* 64:49–57
- Hirata M, Yoshida T, Miyajima K, Kosaka H, Tabuchi T (1995) Correlation between lead in plasma and other indicators of lead exposure among lead-exposed workers. *Int Arch Occup Environ Health* 68(1):58–63
- Montenegro MF, Barbosa F Jr, Sandrim VC, Gerlach RF, Tanus-Santos JE (2006) A polymorphism in the delta-aminolevulinic acid dehydratase gene modifies plasma/whole blood lead ratio. *Arch Toxicol* 80:394–398
- Nilsson U, Attewell R, Christoffersson JO, Schütz A, Ahlgren L, Skerfving S, Mattsson S (1991) Kinetics of lead in bone and blood after end of occupational exposure. *Pharmacol Toxicol* 68:477–484
- Rabinowitz MB, Wetherill GW, Kopple JD (1976) Kinetic analysis of lead metabolism in healthy humans. *J Clin Invest* 58:260–270
- Schütz A, Skerfving S (1976) Effect of a short, heavy exposure to lead dust upon blood lead level, erythrocyte delta-aminolevulinic acid dehydratase activity and urinary excretion of lead delta-aminolevulinic acid coproporphyrin. Results of a 6-month follow-up of two male subjects. *Scand J Work Environ Health* 2:176–184
- Schütz A, Skerfving S, Ranstam J, Christoffersson JO (1987) Kinetics of lead in blood after the end of occupational exposure. *Scand J Work Environ Health* 13:221–231
- Schütz A, Bergdahl IA, Ekholm A, Skerfving S (1996) Measurement by ICP-MS of lead in plasma and whole blood of lead workers and controls. *Occup Environ Med* 53(11):736–740
- Schwartz BS, Lee BK, Lee GS, Stewart WF, Simon D, Kelsey K, Todd AC (2000) Associations of blood lead, dimercaptosuccinic acid-chelatable lead, and tibia lead with polymorphisms in the vitamin D receptor and [delta]-aminolevulinic acid dehydratase genes. *Environ Health Perspect* 108:949–954
- Skerfving S, Bergdahl IA (2007) Lead. In: Nordberg GF, Fowler BA, Nordberg M, Friberg LT (eds) *Handbook on the toxicology of metals*, 3rd edn. Academic Press, London, pp 599–643
- Strömberg U, Lundh T, Skerfving S (2008) Yearly measurements of blood lead in Swedish children since 1978: the declining trend continues in the petrol-lead-free period 1995–2007. *Environ Res* 107:332–335