



NIH Public Access

Author Manuscript

J Nat Prod. Author manuscript; available in PMC 2013 February 24.

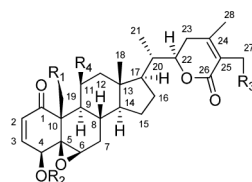
Published in final edited form as:

J Nat Prod. 2012 February 24; 75(2): 306. doi:10.1021/np300061h.

Additions and Corrections

Huaping Zhang, Abbas K. Samadi, Robert J. Gallagher, Juan J. Araya, Xiaoqin Tong, Victor W. Day, Mark S. Cohen, Kelly Kindscher, Rao Gollapudi, and Barbara N. Timmermann*:
Cytotoxic Withanolide Constituents of *Physalis longifolia*.

Page 2533: The structures of compounds **1a**, **1b**, **2a**, **2b**, and **3** (Figure 1) were drawn with incorrect functional groups, and they should be corrected as shown below. The authors apologize for the inconvenience.



- 1a** R₁ = R₃ = OAc R₂ = Ac R₄ = H
1b R₁ = OH R₂ = Ac R₃ = OAc R₄ = H
2a R₁ = OAc R₂ = Ac R₃ = R₄ = H
2b R₁ = OH R₂ = Ac R₃ = R₄ = H
3 R₁ = R₂ = H R₃ = R₄ = OH

Figure 1.