

Practical Application of Methanol-Mediated Mutualistic Symbiosis between *Methylobacterium* Species and a Roof Greening Moss, *Racomitrium japonicum*

Akio Tani^{1*}, Yuichiro Takai², Ikko Suzukawa³, Motomu Akita⁴, Haruhiko Murase⁵, Kazuhide Kimbara^{1,6}

1 Institute of Plant Science and Resources, Okayama University, Okayama, Japan, **2** Research Institute of Environment, Agriculture and Fisheries, Osaka Prefectural Government, Osaka, Japan, **3** Meiho-Construction Incorporation, Shiga, Japan, **4** Faculty of Biological Engineering, Kinki University, Wakayama, Japan, **5** Graduate School of Agriculture and Biological Sciences, Osaka Prefecture University, Osaka, Japan, **6** Faculty of Engineering, Shizuoka University, Shizuoka, Japan

Abstract

Bryophytes, or mosses, are considered the most maintenance-free materials for roof greening. *Racomitrium* species are most often used due to their high tolerance to desiccation. Because they grow slowly, a technology for forcing their growth is desired. We succeeded in the efficient production of *R. japonicum* in liquid culture. The structure of the microbial community is crucial to stabilize the culture. A culture-independent technique revealed that the cultures contain methylotrophic bacteria. Using yeast cells that fluoresce in the presence of methanol, methanol emission from the moss was confirmed, suggesting that it is an important carbon and energy source for the bacteria. We isolated *Methylobacterium* species from the liquid culture and studied their characteristics. The isolates were able to strongly promote the growth of some mosses including *R. japonicum* and seed plants, but the plant-microbe combination was important, since growth promotion was not uniform across species. One of the isolates, strain 22A, was cultivated with *R. japonicum* in liquid culture and in a field experiment, resulting in strong growth promotion. Mutualistic symbiosis can thus be utilized for industrial moss production.

Citation: Tani A, Takai Y, Suzukawa I, Akita M, Murase H, et al. (2012) Practical Application of Methanol-Mediated Mutualistic Symbiosis between *Methylobacterium* Species and a Roof Greening Moss, *Racomitrium japonicum*. PLoS ONE 7(3): e33800. doi:10.1371/journal.pone.0033800

Editor: Paul Jaak Janssen, Belgian Nuclear Research Centre SCK/CEN, Belgium

Received: January 12, 2012; **Accepted:** February 17, 2012; **Published:** March 29, 2012

Copyright: © 2012 Tani et al. This is an open-access article distributed under the terms of the Creative Commons Attribution License, which permits unrestricted use, distribution, and reproduction in any medium, provided the original author and source are credited.

Funding: This work is supported by the Regional New Consortium Projects of the Kansai Bureau of Economy, Trade and Industry (grant number 18S5021) (<http://www.kansai.meti.go.jp/>) and by the Bio-Oriented Technology Research Advancement Institution (2008) (<http://brain.naro.affrc.go.jp/tokyo/>). The funders had no role in study design, data collection and analysis, decision to publish, or preparation of the manuscript.

Competing Interests: The authors have the following interests to declare: Ikko Suzukawa is employed by Meiho-Construction who sell the moss grown by the technique described in the manuscript. A patent application has been submitted on their isolates to grow the moss and is now under review in some countries including Japan. The patent uses part of the data that are used in this manuscript. There are no other patents, products in development or other marketed products to declare. This does not alter the authors' adherence to all the PLoS ONE policies on sharing data and materials.

* E-mail: atani@rib.okayama-u.ac.jp

Introduction

People living in large urban areas in mid- and low latitudes endure high summer temperatures. The temperature in urban areas rises much higher than in surrounding areas, making these areas a so-called heat island. This is largely due to the heat stored in pavement and the concrete of buildings, the heavy use of air conditioners, and the heat emitted by vehicles. Covering buildings with plants is an effective solution to this problem. Besides enhancing aesthetics and improving air quality, green roofs decrease the energy consumption of buildings by reducing the temperature of roof surfaces [1].

Roof greening should be done accordingly, on a case by case basis. For most buildings that are small, have a low load capacity or have low accessibility, maintenance-free roof greening is desired. Roof greening technology using mosses is increasingly attracting attention, because it requires the least amount of soil, water, fertilizer, and maintenance. In addition, it is also applicable for wall greening. However, the production capacity does not meet the demand due to the slow growth of mosses.

Racomitrium species are usually found on sunny, well-drained sand or rocks [2]. As with many mosses, this species is tolerant to extreme desiccation. This trait enables the application of the moss for maintenance-free roof greening. We have succeeded in factory-level production of *R. japonicum*. The moss is grown in a liquid culture (moss dry weight 3.5 kg in a 1000-L tank) that enhances branching of the plant, which is then shaped into carpets and grown in a greenhouse. This results in 2–3 times faster growth than on sand. Since the liquid culture is not sterilized, however, sometimes the culture becomes unstable, apparently resulting from bacterial invasion. Thus understanding the microbial consortium in the liquid culture is a key to stabilize cultivation of the moss.

We isolated various microorganisms from liquid culture samples, and showed that they affect moss growth in vitro [3]. Because we used a cultivation-dependent technique, however, the analysis did not necessarily reflect the true microbial community structure in the liquid culture. In this paper, we applied a cultivation-independent technique to reveal the microbial community structure in the liquid culture samples, and isolated microorganisms able to promote moss growth, which enhances large-scale moss production as well as crop production.

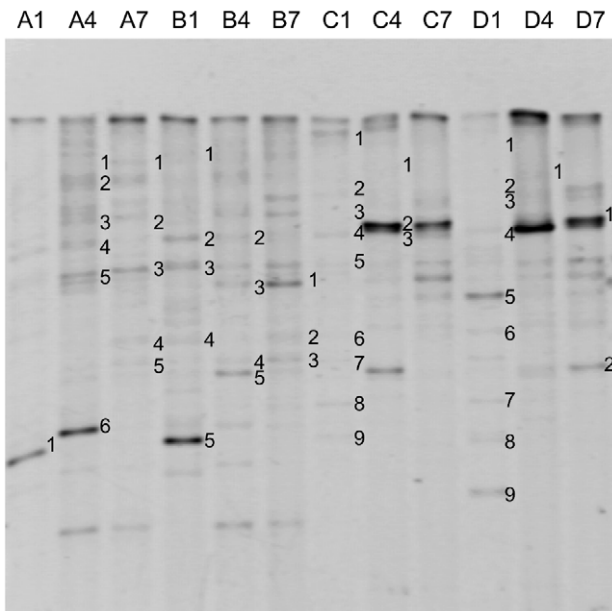


Figure 1. DGGE profiles showing the bacterial communities of *R. japonicum* liquid cultures. A–D indicate the growth conditions (see text) and 1, 4 and 7 refer to the week of sampling. Bands indicated with numbers were purified and sequenced (for results, see Table 1). doi:10.1371/journal.pone.0033800.g001

the protonemata. The protonemata were allowed to grow under the same conditions as *R. japonicum*.

Growth promotion of seed plants

Seeds of *Nicotiana tabacum*, *Nicotiana benthamiana*, *Arabidopsis thaliana* (ecotype Columbia), *Glycine max* cv. Enrei, and *Oryza sativa* ssp. *japonica* cv. Nipponbare were sterilized with 70% ethanol for 1 min, then treated with 1–2% sodium hypochlorite solution containing 0.3% Tween 20 for 5–20 min. The seeds were washed with sterile water 5 times.

Ten *Nicotiana* seeds were placed on filter paper in a Plant box™ (Iwaki, Tokyo, Japan, 5.5-cm square and 9-cm height) and soaked with 5-mL liquid 1/2 Murashige-Skoog (MS) medium (Sigma). Bacterial cells (500 μ L, OD = 1.0) grown in methanol medium and washed with sterile water were added to the solution. The seeds were allowed to grow at 25°C (12 h light/12 h dark) for 15 days. Ten *A. thaliana* seeds were placed on solidified 1/2 MS medium (0.8% agar) prepared in a Petri dish (9-cm diameter); each seed received 5 μ L of bacterial suspension, and was grown at 23°C (12 h light/12 h dark) for 10 days. Seven *G. max* seeds were placed on 40-mL 0.8% agar prepared in a Plant box™; each seed received 10 μ L of the suspension, and was grown at 25°C for 7 days (16 h light/8 h dark). Fifteen *O. sativa* seeds were grown as *G. max* except for 8 days (12 h light/12 h dark). These preparations were made in triplicate. When the plant seedlings reached their maximal sizes allowed by the containers, which typically occurred during growth periods specified above, the length of root and shoot and the fresh weight of the seedlings were measured.

Practical cultivation of *R. japonicum*

Liquid culture system. Adult gametophytes of *R. japonicum* (n = 100, length 1 \pm 0.3 cm) were put in 900-mL tap water. A culture of strain 22A (grown in methanol medium for 7 days,

OD₆₀₀ = 0.71, 25 mL) was added to the *R. japonicum* culture. A control with tap water (25 mL) added instead of the culture and another with uninoculated methanol medium (25 mL) were prepared. The experiment was done in triplicate. The plants were allowed to grow at 25°C at a photon flux density of 100 μ mol/m²/s under a fluorescent lamp with a 16 h light/8 h dark cycle. Air was bubbled in the flask at 3 L/min. After 1, 2, and 3 weeks of cultivation, the number of branches per plant were counted, and apical growth was measured.

Field experiment. Adult gametophytes of *R. japonicum* (30 g, equivalent to 26 g dry weight, with a length of 5.6 \pm 1.4 cm), which had been grown in liquid culture for 4 weeks and then incubated in a greenhouse for 4 weeks, were placed on plastic trays (32 \times 42 \times 3 cm). The trays were prefilled with different support materials, i.e. lime soil, Yamakusari soil (a heavily weathered mountain rock soil, on which native *R. japonicum* preferentially grows in Shiga Prefecture, Japan), Kanuma soil (weathered pumice stone), vermiculite, rock wool, and plastic net. One of the two trays prepared for each support was sprayed with a suspension of strain 22A grown in methanol medium (0.8 \times 10⁸ CFU/mL, 100 mL). The trays were placed in an experimental field belonging to Meiho Construction (Shiga, Japan) for 12 weeks (Oct. 22, 2010 to Jan. 13, 2011). The plants were allowed to grow without any treatment. The length of 50 randomly selected plants was measured before and after growth in the field.

Nucleotide accession numbers

The GenBank/EMBL/DDBJ accession numbers for the 16S rRNA gene sequences reported in this paper are DM377424 (strain 11A), DM377425 (strain 11B), DM377428 (strain 21B), DM377429 (strain 22A), and AB558142 (strain 41A).

Results and Discussion

Predomination of methylophilic bacteria in liquid culture

In a previous study, we isolated bacteria that belonged mainly to *Duganella*, *Pseudomonas*, and *Rhodococcus* species from liquid cultures of *R. japonicum* [3]. Some of these bacteria promoted the growth of moss protonemata, possibly through plant hormone synthesis. Here we used culture-independent techniques to reveal the microbial community structures of the same liquid cultures to obtain more insight into the interaction between *R. japonicum* and the bacteria detected in the cultures.

We examined the microbial community structure in samples of *R. japonicum* liquid cultures by means of DGGE (Fig. 1 and Table 1). The DNA sequences of selected fragments labeled in Fig. 1 were determined after gel-excision and re-amplification by PCR. Several fragments indicated in Fig. 1 yielded mixed sequence data, suggesting that they originated from more than one bacterial species. We therefore excluded them from our analysis and these fragments are not listed in Table 1. We found the predominance of methylophilic species such as *Methylobacterium* species (*M. tardum*, and *M. zatmanii*), *Methylovirgula ligni*, *Methylocella tundrae*, and *Methylocapsa aurea*. Besides them, *Sphingomonas* species [19], *Pseudomonas* and *Achromobacter* species [20], *Bacillus* and *Micrococcus* species [21] were also detected. These genera were recently shown to contain methylophilic strains, although it is unknown whether the detected bacteria are really methylophilic or not only by DGGE analysis. These results suggested that methanol (or other C1-compounds) could be a main carbon source in liquid cultures. Because we used nutrient-poor media for cultivation of the moss, the carbon source for heterotrophic

Table 1. Result of DGGE analysis for *R. japonicum* liquid culture samples.

DGGE band	Closest type strain	Strain	GenBank accession no.	Pairwise similarity (%)
A1-1	<i>Micrococcus terreus</i>	V3M1(T)	FJ423763	98.3
A4-1	<i>Mycoplasma ravigulmonis</i>	Mus musculus	AF001173	89.1
A4-4	<i>Sphingopyxis witflariensis</i>	W-50(T)	AJ416410	92.1
A4-5	<i>Rhizomicrobium electricum</i>	Mfc52(T)	AB365487	94.8
A4-6	<i>Spirosoma linguale</i>	DSM 74(T)	CP001769	97.5
A7-4	<i>Methylobacterium tardum</i>	RB677(T)	AB252208	96.5
B1-3	<i>Micrococcus terreus</i>	V3M1(T)	FJ423763	99.2
B1-5	<i>Micrococcus terreus</i>	V3M1(T)	FJ423763	100
B4-3	<i>Methylovirgula ligni</i>	BW863(T)	FM252034	96.6
B4-4	<i>Methylobacterium zatmanii</i>	DSM 5688(T)	AB175647	96.9
B4-5	<i>Achromobacter marplatensis</i>	B2(T)	EU150134	96.4
B4-6	<i>Sneathiella glossodoripedis</i>	IAM 15419(T)	AB289439	82.9
C1-1	<i>Spirosoma linguale</i>	DSM 74(T)	CP001769	94.1
C1-5	<i>Acinetobacter haemolyticus</i>	DSM 6962(T)	X81662	93.7
C1-6	<i>Achromobacter marplatensis</i>	B2(T)	EU150134	93.2
C1-7	<i>Methylocella tundrae</i>	T4(T)	AJ555244	92.1
C1-8	<i>Sanguibacter keddieii</i>	DSM 10542(T)	CP001819	99.2
C1-9	<i>Streptomyces thermovulgaris</i>	NBRC 16609(T)	AB249975	99.2
C4-1	<i>Cytophaga hutchinsonii</i>	ATCC 33406(T)	CP000383	100
C4-2	<i>Pedobacter koreensis</i>	WPCB189(T)	DQ092871	84.2
C4-5	<i>Giesbergia sinuosa</i>	LMG 4393(T)	AF078754	84.4
C4-6	<i>Reyranella massiliensis</i>	URTM1(T)	EF394922	100
C7-1	<i>Hirschia maritima</i>	GSW-2(T)	FM202386	96.6
C7-2	<i>Methylocella tundrae</i>	T4(T)	AJ555244	96.5
C7-3	<i>Verminephrobacter eiseniae</i>	EF01-2(T)	CP000542	85.2
D1-1	<i>Sphingopyxis witflariensis</i>	W-50(T)	AJ416410	98.3
D1-2	<i>Bacillus pocheonensis</i>	Gsoil 420(T)	AB245377	92.9
D1-3	<i>Methylocapsa aurea</i>	KYG(T)	FN433469	98.6
D1-4	<i>Methylocella tundrae</i>	T4(T)	AJ555244	97.4
D1-5	<i>Salinibacterium xinjiangense</i>	0543(T)	DQ515964	100
D1-6	<i>Dyadobacter psychrophilus</i>	BZ26(T)	GQ131577	96.9
D1-7	<i>Zimmermannella bifida</i>	IAM 14848(T)	AB012595	80.5
D1-9	<i>Dyadobacter psychrophilus</i>	BZ26(T)	GQ131577	97.5
D4-1	<i>Spirosoma linguale</i>	DSM 74(T)	CP001769	95.7
D7-1	<i>Polysiphonia harveyi</i> Chloroplast		AY731510	87
D7-2	<i>Polaromonas aquatica</i>	CCUG 39402(T)	AM039830	97

Identification was done at EZtaxon site (version 2.1). The closest relatives are listed.
doi:10.1371/journal.pone.0033800.t001

bacteria must have been supplied from the plant. Plants can emit various C1-compounds including methanol [22,23], chloromethane [24], and methane [25,26]. We confirmed methanol emission from the moss as described below.

Methanol emission from *R. japonicum*

Using *P. pastoris* PPY12 (pYA005 and pYA006), we detected methanol emission from gametophytes and protonemata of the moss. As shown in the control experiment (Fig. 2A), only methanol (YNM)-grown cells emitted fluorescence in their peroxisomes. Yeast cells applied on Y medium without plants did not emit fluorescence, and those on Y+0.5% methanol emitted fluorescence within 1–5 days. Yeast cells applied onto protonemata exhibited

fluorescence for 5 days, with a weaker intensity than on Y+0.5% methanol, and yeast cells applied to gametophytes exhibited stronger YFP signals (Fig. 2B) than those on protonemata. These results suggested that methanol is emitted from both gametophytes and protonemata of *R. japonicum*. Although methanol is considered to be emitted from plant stomata, since methanol is water-soluble and the cuticular surface of plants is hydrophobic [23,27], detection of methanol was recently reported on epidermal cells of *Arabidopsis* leaves [28]. In many cases, the leaves of bryophytes consist of a single cell layer that is covered with cuticle and these leaves do not contain any stomata. Thus methanol is suspected to be leaking from the moss plant surface, as water can be absorbed through the entire body of the plants.

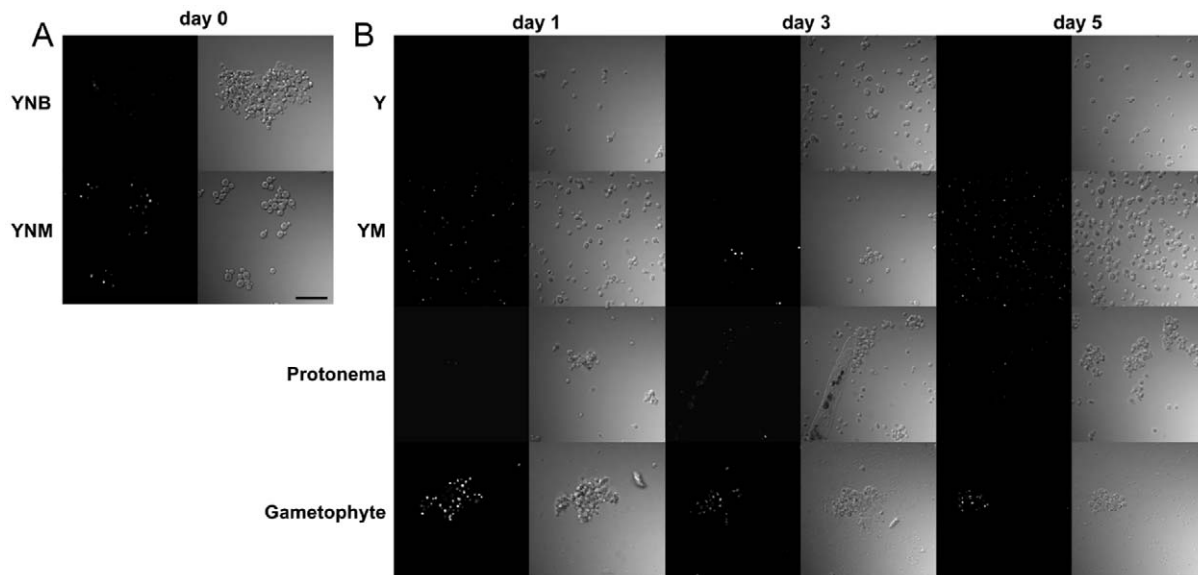


Figure 2. Detection of methanol emitted from *R. japonicum*. A. Control observation with *P. pastoris* PPY12 (pYA005 and pYA006) grown on YNB and YNM for 2 days. B. YNB-grown cells were applied onto Y medium, Y+0.5% methanol (YM); protonemata were grown on Y medium and non-sterile gametophytes were inoculated on Y medium. Left panel, fluorescence; right panel, differential interference contrast images. Bar, 20 μ m. doi:10.1371/journal.pone.0033800.g002

Characterization of *Methylobacterium* species

Most of the colonies that formed on methanol medium using the liquid culture samples were pink, suggesting that they belong to *Methylobacterium* species. Six strains were isolated and identified as *Methylobacterium* species based on their 16S rRNA genes sequences. The strains 11A, 11B, 21B, and 21C had *M. extorquens* (NCIMB9399^T, AB175633) as the closest phylogenetic relative, strain 22A was closest to *M. aquaticum* (CCM7218^T, AJ635303) and strain 41A was closest to *M. oryzae* (DSM18207^T, AY683045) (Fig. S1). Their biochemical characteristics are summarized in Table S1, using *M. extorquens* strain AM1 for comparison. Some of the strains were able to produce indoleacetic acid [29,30], siderophore [31], ACC deaminase [32] and hydrogen cyanate [10]. Solubilization of calcium phosphate was also confirmed [33,34]. PQQ is a key compound produced by rhizobacteria that promotes plant growth [35]. Interestingly, PQQ is the cofactor of MDH in *Methylobacterium* species, and MDH expression in the phyllosphere has been confirmed by proteomic analysis [36]. The PQQ production level was improved by using PQQ medium [16]. All *Methylobacterium* species isolates had ACC deaminase activity, at a level that seemed high for plant-growth promoting rhizobacteria [17]. These characteristics are considered important for beneficial interaction between microbes and plants, although it is not clear which of the traits is crucial for the growth promotion effect described below.

Growth promotion of mosses

The isolated *Methylobacterium* species were applied onto sterile protonemata of *R. japonicum*, and an obvious growth-promotion effect was observed, as shown in Fig. 3A. Among the isolates, strain 22A showed the greatest effect as quantified in Fig. 3B. In addition, as the protonemata grew on solid Y medium, growth of the applied bacterial strains was clearly visible around the protonemata (Fig. 3C). These isolates could not grow in isolation on the medium since Y medium contains no carbon source, and methanol supplementation supported their growth (data not shown). Thus it is likely that the plant supplied a carbon source, possibly including methanol, to the isolates. The protonemata of

R. japonicum rarely develop into gametophytes on agar plate media. Formation of gametophytes was observed when the protonemata were grown on Florialite. The gametophyte development was promoted by inoculation with the isolates, an effect equivalent to that in an experiment with kinetin added instead (Fig. 3D). These results suggest that *Methylobacterium* species not only promoted the growth but also the development of gametophytes, possibly through synthesis of phytohormones, including auxin and cytokinin. It has already been reported that growth and bud formation of a moss (*Funaria hygrometrica*) [37] and growth of liverworts (*Marchantia polymorpha* L. and *Lunularia cruciata* L.) [38] are promoted by *Methylobacterium* species, and the importance of their phytohormone synthesis is suggested [37,39,40]. In this study, we detected auxin production (Table S1) but did not investigate cytokinin production. We are currently trying to quantify the phytohormones produced by *Methylobacterium* species.

Strain 22A was also applied onto protonemata of other bryophytes. Among those tested, the growth promotion of *H. microphyllum* was the most pronounced, as shown in Fig. 4. The growth of *T. microphylla* was stimulated only slightly by strain 22A. The density of the *Bryum* sp. colony was lowered by bacterial application. Thus, although growth conditions have not been optimized for the different bryophytes tested in this study, these results may indicate that growth promotion by *Methylobacterium* species is dependent on the moss-bacterium combination. Cultivation site and plant species are important determinants of *Methylobacterium* community composition in the plant phyllosphere [41], and plant species and soil type shape the structure and function of microbial communities in the rhizosphere [42]. Recently it was shown that an α -proteobacteria subpopulation in soybean is drastically affected by different nodulation phenotypes and amount of nitrogen fertilization [43]. These observations implicate the environment, plant species, and plant nutrient conditions as influencing the microbial community structure on plant surfaces. Thus, in order to promote plant growth, it will be important to use the microorganisms that can best grow under given conditions.

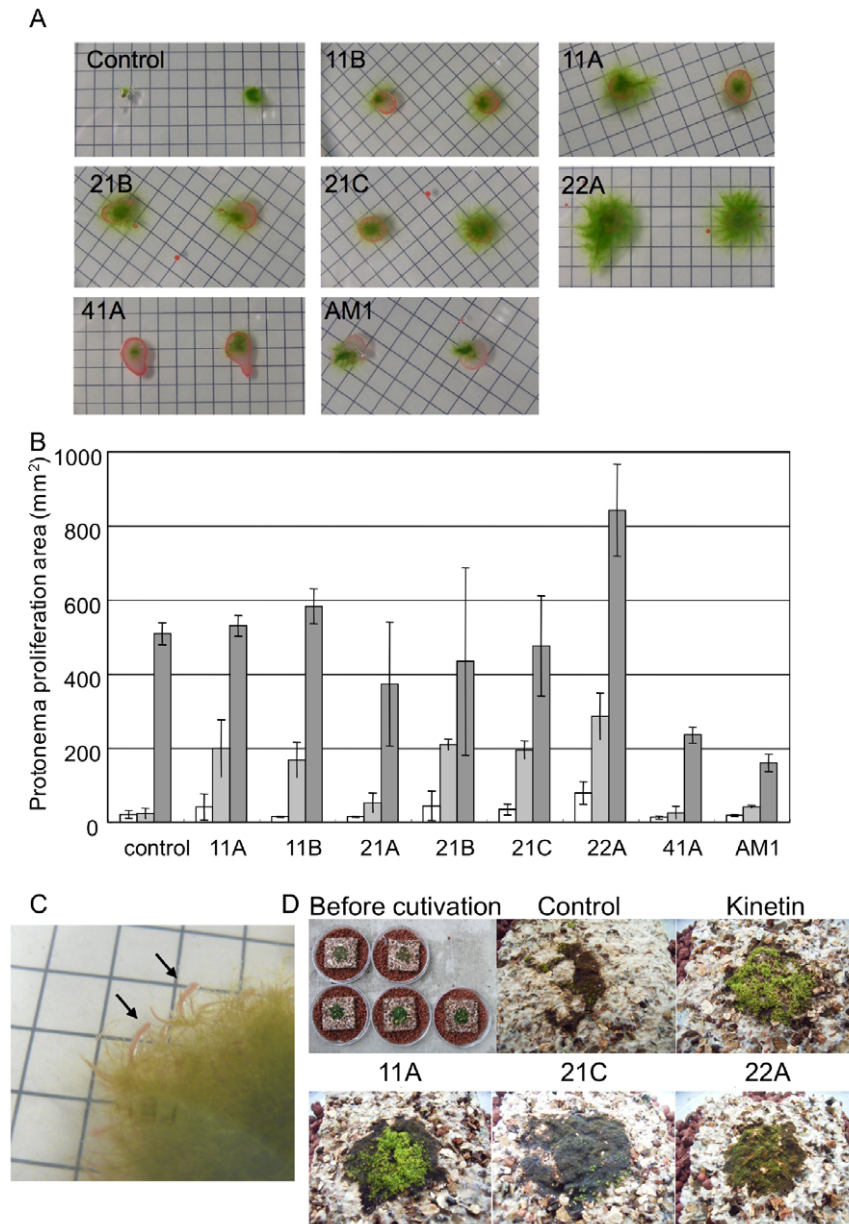


Figure 3. Growth promotion of *R. japonicum* by *Methylobacterium* isolates. A, Protonemata growth on Y medium in the presence of bacterial isolates (35 days of cultivation). Grid, 5 mm. B, Quantification of protonemata growth. White bars, 22 days; light gray bars, 35 days; and gray bars, 63 days. Growth was evaluated by measuring the area of protonemata proliferation, regarded as ellipses. Error bars, standard deviation (n = 8). C, Strain 22A growing with protonemata on Y medium. Grid, 5 mm. D, Induction of gametophyte formation by application of bacterial isolates. A suspension of *R. japonicum* protonemata was inoculated on Florialite, to which 50 μ L of water (control), kinetin (3 mg/L), or a bacterial suspension (11A, 21C and 22A) was applied. Images were taken after 60 days of cultivation. doi:10.1371/journal.pone.0033800.g003

Growth promotion of seed plants

We also tested the ability of the selected isolates to promote the growth of seed plants (Table 2). Strain 22A was effective on *A. thaliana*. The growth of *N. tabacum* was promoted by all tested strains. *N. benthamiana* growth was promoted only by strain 22A, and the application of strains 21B and 21C resulted in decreased seedling weight. Strain 22A promoted *O. sativa* growth. The seedling weight of *G. max* was increased by application of strains 21B and 21C. No statistically significant growth promotion was observed for *H. vulgare* with these three strains (data not shown). These results suggested that *Methylobacterium* species isolated from

the moss culture were also effective in promoting growth of the tested seed plants, although there was again some combination specificity. It has been reported that *M. mesophilicum* can promote the growth of liverworts but not sunflower or maize [38]. On the other hand, isolates of *M. extorquens* were effective in promoting growth of various seed plants [27]. It is unknown whether this non-uniform effectiveness is due to plant-microbe specificity or the different experimental conditions of each study. The first would suggest that for practical application and promotion of growth, more plant species and bacterial strains will have to be examined to develop *Methylobacterium* as a general growth promoting strategy

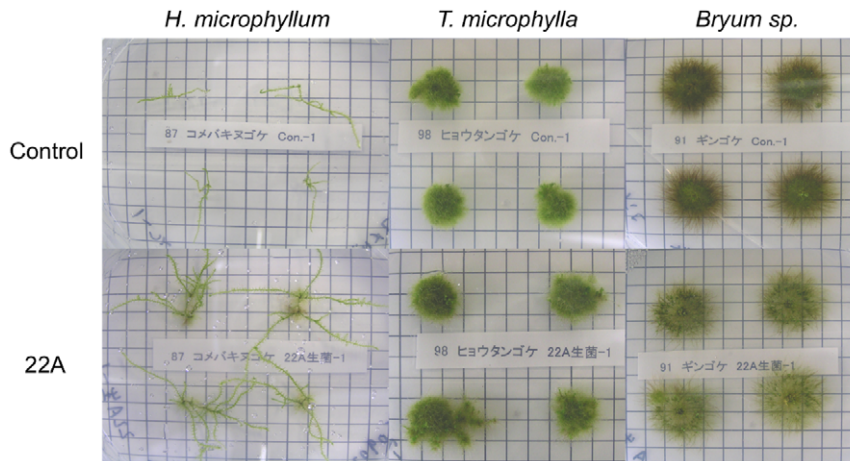


Figure 4. Effect of strain 22A application on other bryophytes. Strain 22A was applied onto protonemata of *H. microphyllum*, *T. microphylla*, and *Bryum* sp., and the plants were grown for 38 days on Y medium. The plants that received no bacterial cells served as controls. Grid, 5 mm. doi:10.1371/journal.pone.0033800.g004

in plants. Field level experiments will also be important for checking the effect and practical application of our isolates in natural conditions.

Practical cultivation of *R. japonicum*

In our process for *R. japonicum* production, branching is first stimulated during cultivation in liquid, and the branched gametophytes are then placed on trays and cultured in a greenhouse. Since the stimulation of branching is a crucial step in the liquid cultivation step, we evaluated the effect of strain 22A application on branch formation. Apical growth also occurs in this step, which is stimulated more in the greenhouse. As shown in

Fig. 5(A), the application of strain 22A clearly stimulated branching in 3 weeks compared to control experiments with either water or methanol medium ($p < 0.00001$). Apical growth was also clearly stimulated by strain 22A application compared to the non-inoculated control (Fig. 5(B)) ($p < 0.00001$). Addition of methanol medium was not effective, although we expected indirect effects due to the predomination of methylotrophs. These results clearly indicated that the application of strain 22A cells in liquid culture stimulates branching and apical growth of the moss.

After stimulation of branching in liquid culture (4 weeks), the plants were allowed to grow in a greenhouse to adapt to the environment (4 weeks). The plants then had to be fixed onto

Table 2. Growth promotion of seed plants by added *Methylobacterium* species.

		Strain name of isolated <i>Methylobacterium</i> species			
		Control (water)	21B	21C	22A
<i>Arabidopsis thaliana</i> (n = 30)	Root length (cm)	1.1±1.3	2.2±1.6*	1.8±1.6	2.1±1.8*
	Fresh mass (mg)	18±9.0	23±13.5	22±11.5	29±13.6**
<i>Nicotiana tabacum</i> (n = 30)	Shoot length (cm)	0.52±0.10	0.55±0.10	0.53±0.05	0.78±0.16**
	Root length (cm)	1.0±0.42	0.90±0.24	1.3±0.28**	1.1±0.34
	Fresh mass (mg)	41±20.3	58±17.6**	75±11.1**	70±19.5**
<i>Nicotiana benthamiana</i> (n = 30)	Shoot length (cm)	0.51±0.36	0.42±0.11	0.53±0.10	0.53±0.13
	Root length (cm)	1.2±0.78	1.1±0.45	1.4±0.32	1.1±0.30
	Fresh mass (mg)	44±28.0	22±8.2**	26±8.4**	66±12.0**
<i>Oryza sativa</i> (n = 45)	Shoot length (cm)	4.1±1.01	nt	3.7±0.98	3.9±0.75
	Root length (cm)	10±3.1	nt	8.8±3.2	9.4±3.4
	Fresh mass (mg)	61±12.4	nt	64±12.6	67±11.5*
<i>Glycine max</i> (n = 21)	Shoot length (cm)	7.7±1.9	8.3±0.9	8.1±1.6	8.1±2.1
	Root length (cm)	9.8±3.3	11±1.4	12±3.4	7.1±3.1*
	Lateral root number	26±9.9	37±6.8**	39±12.3**	28±10.3
	Fresh mass (g)	1.4±1.25	1.5±0.18*	1.6±0.31*	1.4±0.24

Data presented as mean ± SD. Fresh mass indicates that of entire plants.

nt: not tested.

*, $p < 0.05$ and.

***, $p < 0.01$ (Student's T-test).

doi:10.1371/journal.pone.0033800.t002

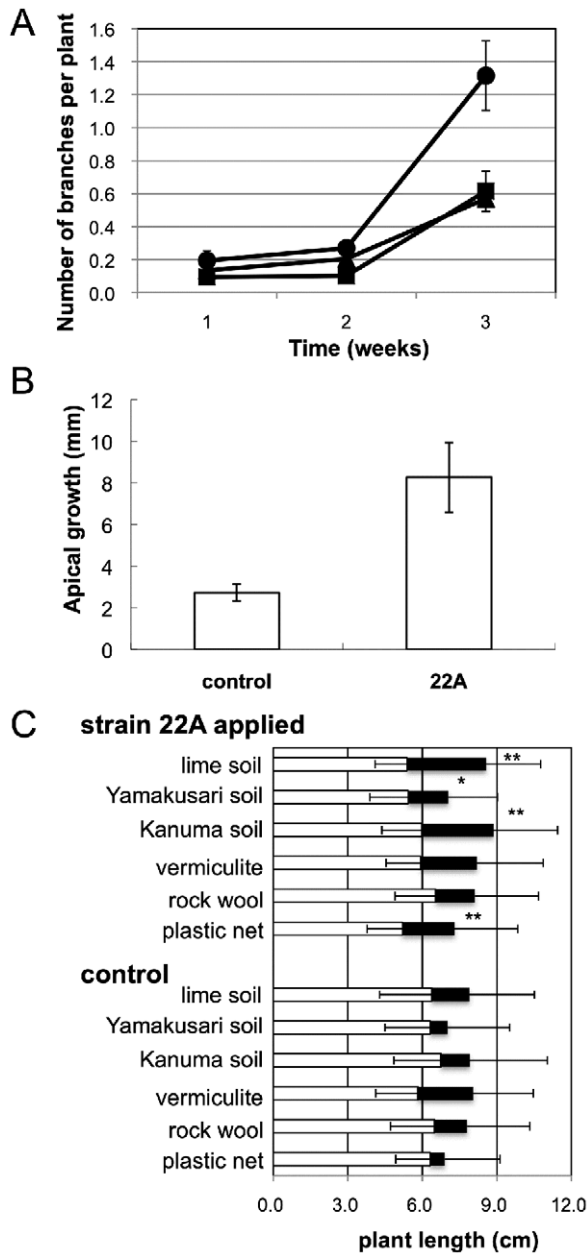


Figure 5. Application of strain 22A to *R. japonicum*. A and B, growth-promotion experiment of *R. japonicum* in hydroponic culture. A, branch number per plant during cultivation. Circle, 22A-applied sample; triangle, methanol medium; and square, control (water). Data are presented as mean \pm SEM (four replicates of $n=100$). B, apical growth at the end of cultivation. Data are presented as mean \pm SEM (four replicates of $n=100$). C, gametophyte growth of *R. japonicum* in a field experiment using different support materials. White bar, average size of the plants before the experiment (bar, standard deviation only to left side); and black bar, increase in size after the experiment (bar, standard deviation only to right side). Statistical significance of the difference between control and 22A-treated samples is shown as * ($p<0.05$) and **($p<0.01$) (Student's t-test, $n=50$). doi:10.1371/journal.pone.0033800.g005

support materials. There are several methods to fix the plants on trays that are later settled on roofs. In this experiment we used vermiculite, Kanuma soil, Yamakusari soil, and lime soil, all of which have good drainage and may have a nutritional effect. We also used plastic net and rock wool, which can fix the plants but have

no nutritional effect. Fig. 5C shows growth stimulation of gametophytes of *R. japonicum* by application of strain 22A in a field experiment. Since it was difficult to make the plant size uniform prior to the test, the average size before the experiment showed some variation (white bar). In the control experiment (in the absence of strain 22A), vermiculite and lime soil showed good performance in increasing plant size (23–38% increase). Although it is claimed that mosses require a little nutrient, support on plastic net and rock wool, with no nutrients, led to poor growth. In the strain 22A-treated samples, an increase in plant length was clear. Among the soils tested except for vermiculite, the application of strain 22A significantly increased the growth of the moss compared to the control. Kanuma soil is considered to be a good support material, because of its light weight, low cost, porousness, stability and ease of handling. By using Kanuma soil, strain 22A doubled the moss growth rate, which resulted in reducing the cultivation time by half. This is quite an advantage in cutting the cost and time to produce a moss carpet. We observed, however, moss grown this way is not resistant to strong wind at roof level, and other plant species disseminated by wind-borne seeds tend to grow on the soil. Support materials that can overcome these problems are still needed.

Here we report a unique methyloph-predominating community structure in liquid cultures of *R. japonicum*. The moss emits methanol, which is considered to be the main carbon source supplied to the microbes in the liquid culture. We also showed strong plant-growth promotion activity of the isolated *Methylobacterium* species, and the growth-promotion effect was specific to the plant-microbe combination. It is not yet known which biochemical ability of the isolates is crucial for growth promotion. The methanol emission from the moss and growth promotion by *Methylobacterium* species are considered to result from their mutualistic symbiosis [40]. Our isolates, especially strain 22A, have great potential for application to industrial production of the moss as a roof greening material and as biofertilizers for crops. Feasibility studies are now in progress in our laboratory.

Supporting Information

Figure S1 Phylogenetic analysis based on 16S rRNA gene sequences constructed after multiple alignment of data (1290 nt) and clustering with neighbor-joining method. Bootstrap values greater than 70% based on 1000 replications are listed as percentages at the branching points. The scale bar indicates the number of substitutions per nucleotide position. The sequence of *Rhodospseudomonas palustris* DSM 123^T was used as an outgroup.

(PPT)

Table S1 Characterization of *Methylobacterium* isolates.

(XLS)

Acknowledgments

We thank N. Nishimura for moss identification and Y. Fujitani, A. Kato, Y. Iwamoto and T. Minami for assistance. We are also obliged to K. Sato, R. Yamamoto, J. F. Ma, and the Japan Tobacco, Leaf Tobacco Research Laboratory, for seeds of barley, soybean, rice, and *Nicotiana*, respectively, and to Y. Sakai for the kind gift of the yeast strain. This paper was edited by a native speaker through Forte Science Communications.

Author Contributions

Conceived and designed the experiments: AT MA HM KK. Performed the experiments: AT YT IS MA. Analyzed the data: AT YT IS. Contributed reagents/materials/analysis tools: AT YT IS MA. Wrote the paper: AT YT IS MA HM KK.

References

1. Saiz S, Kennedy C, Bass B, Pressnail K (2006) Comparative life cycle assessment of standard and green roofs. *Environ Sci Technol* 40: 4312–4316. doi:10.1021/es0517522.
2. Iwatsuki Z (2001) Mosses and liverworts of Japan Iwatsuki Z, ed. Tokyo: Heibonsha Ltd.
3. Tani A, Akita M, Murase H, Kimbara K (2011) Culturable bacteria in hydroponic cultures of moss *Racomitrium japonicum* and their potential as biofertilizers for moss production. *J Biosci Bioeng* 112: 32–39.
4. Muyzer G, de Waal E, Uitterlinden A (1993) Profiling of complex microbial populations by denaturing gradient gel electrophoresis analysis of polymerase chain reaction-amplified genes coding for 16S rRNA. *Appl Environ Microbiol* 59: 695–700.
5. Chun J, Lee J-H, Jung Y, Kim M, Kim S, et al. (2007) EzTaxon: a web-based tool for the identification of prokaryotes based on 16S ribosomal RNA gene sequences. *Int J Syst Evol Microbiol* 57: 2259–2261. doi:10.1099/ijs.0.64915-0.
6. Ano Y, Hattori T, Oku M, Mukaiyama H, Baba M, et al. (2005) A sorting nexin PpAtg24 regulates vacuolar membrane dynamics during pexophagy via binding to phosphatidylinositol-3-phosphate. *Mol Biol Cell* 16: 446–457. doi:10.1091/mbc.E04-09-0842.
7. Tani A, Sahin N, Kimbara K (2011) *Methylobacterium oxalidis* sp. nov. isolated from leaves of *Oxalis corniculata*. *Int J Syst Evol Microbiol* in press. doi:10.1099/ijs.0.033019-0.
8. Nautiyal C (1999) An efficient microbiological growth medium for screening phosphate solubilizing microorganisms. *FEMS Microbiol Lett* 170: 265–270.
9. Schwyn B, Neilands J (1987) Universal chemical assay for the detection and determination of siderophores. *Anal Biochem* 160: 47–56.
10. Ramette A, Frapolli M, Defago G, Moenne-Loccoz Y (2003) Phylogeny of HCN synthase-encoding *hcnBC* genes in biocontrol fluorescent pseudomonads and its relationship with host plant species and HCN synthesis ability. *Mol Plant Microbe Interact* 16: 525–535.
11. Glickmann E, Dessaux Y (1995) A critical examination of the specificity of the Salkowski reagent for indolic compounds produced by phytopathogenic bacteria. *Appl Environ Microbiol* 61: 793–796.
12. Opelt K, Berg G (2004) Diversity and antagonistic potential of bacteria associated with bryophytes from nutrient-poor habitats of the Baltic Sea coast. *Appl Environ Microbiol* 70: 6569–6579.
13. Chernin L, Ismailov Z, Haran S, Chet I (1995) Chitinolytic *Enterobacter agglomerans* antagonistic to fungal plant pathogens. *Appl Environ Microbiol* 61: 1720–1726.
14. Shaw J, Lin F, Chen S, Chen H (1995) Purification and properties of an extracellular α -amylase from *Thermus* sp. *Bot Bull Acad Sin* 36: 195–200.
15. Liu Q, Kirchhoff J, Faehtle C, Viola R, Hudson R (2006) A rapid method for the purification of methanol dehydrogenase from *Methylobacterium extorquens*. *Protein Expr Purif* 46: 316–320.
16. Urakami T, Yashima K, Kobayashi H, Yoshida A, Ito-Yoshida C (1992) Production of pyrroloquinoline quinone by using methanol-utilizing bacteria. *Appl Environ Microbiol* 58: 3970–3976.
17. Penrose D, Glick B (2003) Methods for isolating and characterizing ACC deaminase-containing plant growth-promoting rhizobacteria. *Physiol Plant* 118: 10–15.
18. Abramoff M, Magelhaes P, Ram S (2004) Image processing with ImageJ. *Biophotonics Int* 11: 36–42.
19. Boden R, Thomas E, Savani P, Kelly D, Wood A (2008) Novel methylophilic bacteria isolated from the River Thames (London, UK). *Environ Microbiol* 10: 3225–3236.
20. Hung W-L, Wade WG, Boden R, Kelly DP, Wood AP (2011) Facultative methylophilic bacteria from the human oral cavity and methylophilicity in strains of *Gordonia*, *Leifsonia*, and *Microbacterium*. *Arch Microbiol* 193: 407–417. doi:10.1007/s00203-011-0689-6.
21. Anesti V, McDonald I, Ramaswamy M, Wade W, Kelly D, et al. (2005) Isolation and molecular detection of methylophilic bacteria occurring in the human mouth. *Environ Microbiol* 7: 1227–1238.
22. Fall R, Benson AA (1996) Leaf methanol - the simplest natural product from plants. *Trends Plant Sci* 1: 296–301.
23. Nemecek-Marshall M, MacDonald R, Franzen J, Wojciechowski C, Fall R (1995) Methanol emission from leaves. *Plant Physiol* 108: 1359–1368.
24. Nadalig T, Farhan Ul Haque M, Roselli S, Schaller H, Bringel F, et al. (2011) Detection and isolation of chloromethane-degrading bacteria from the *Arabidopsis thaliana* phyllosphere, and characterization of chloromethane utilisation genes. *FEMS Microbiology Ecology* doi:10.1111/j.1574-6941.2011.01125.x.
25. Keppler F, Hamilton J, Brass M, Rockmann T (2006) Methane emissions from terrestrial plants under aerobic conditions. *Nature* 439: 187–191.
26. Nisbet R, Fisher R, Nimmo R, Bendall D, Crill P, et al. (2009) Emission of methane from plants. *Proc Biol Sci* 276: 1347–1354.
27. Abanda-Nkpwatt D, Musch M, Tschiersch J, Boettner M, Schwab W (2006) Molecular interaction between *Methylobacterium extorquens* and seedlings: growth promotion, methanol consumption, and localization of the methanol emission site. *J Exp Bot* 57: 4025–4032. doi:10.1093/jxb/erl173.
28. Kawaguchi K, Yurimoto H, Oku M, Sakai Y (2011) Yeast methylophilicity and autophagy in a methanol-oscillating environment on growing *Arabidopsis thaliana* leaves. *PLoS ONE* 6: e25257. doi:10.1371/journal.pone.0025257.g005.
29. Ali B, Sabri A, Ljung K, Hasnain S (2009) Auxin production by plant associated bacteria: impact on endogenous IAA content and growth of *Triticum aestivum* L. *Lett Appl Microbiol*. pp 542–547.
30. Fedorov DN, Doronina NV, Trotsenko YA (2010) Cloning and characterization of indolepyruvate decarboxylase from *Methylobacterium extorquens* AM1. *Biochemistry Moscow* 75: 1435–1443. doi:10.1134/S0006297910120035.
31. Anandham R, Gandhi P, Madhaiyan M, Sa T (2008) Potential plant growth promoting traits and bioacidulation of rock phosphate by thiosulfate oxidizing bacteria isolated from crop plants. *J Basic Microbiol* 48: 439–447.
32. Madhaiyan M, Poonguzhali S, Sa T (2007) Characterization of 1-aminocyclopropane-1-carboxylate (ACC) deaminase containing *Methylobacterium oryzae* and interactions with auxins and ACC regulation of ethylene in canola (*Brassica campestris*). *Planta* 226: 867–876.
33. Dey R, Pal K, Bhatt D, Chauhan S (2004) Growth promotion and yield enhancement of peanut (*Arachis hypogaea* L.) by application of plant growth-promoting rhizobacteria. *Microbiol Res* 159: 371–394.
34. Jayashree S, Vadivukkarasi P, Anand K, Kato Y, Seshadri S (2011) Evaluation of pink-pigmented facultative methylophilic bacteria for phosphate solubilization. *Arch Microbiol* 193: 543–552.
35. Choi O, Kim J, Kim J, Jeong Y, Moon J, et al. (2008) Pyrroloquinoline quinone is a plant growth promotion factor produced by *Pseudomonas fluorescens* B16. *Plant Physiol* 146: 657–668.
36. Delmotte N, Knief C, Chaffron S, Innerebner G, Roschitzki B, et al. (2009) Community proteogenomics reveals insights into the physiology of phyllosphere bacteria. *Proc Natl Acad Sci USA* 106: 16428–16433. doi:10.1073/pnas.0905240106.
37. Hornschuh M, Grotha R, Kutschera U (2002) Epiphytic bacteria associated with the bryophyte *Funaria hygrometrica*: effects of *Methylobacterium* strains on protonema development. *Plant Biol* 4: 682–687. doi:10.1055/s-2002-37403.
38. Kutschera U, Koopmann V (2005) Growth in liverworts of the *Marchantiales* is promoted by epiphytic methylobacteria. *Naturwissenschaften* 92: 347–349.
39. Hornschuh M, Grotha R, Kutschera U (2006) Moss-associated methylobacteria as phytosymbionts: an experimental study. *Naturwissenschaften* 93: 480–486.
40. Kutschera U (2007) Plant-associated Methylobacteria as co-evolved phytosymbiosis: a hypothesis. *Plant Signal Behav* 2: 74–78.
41. Knief C, Ramette A, Frances L, Alonso-Blanco C, Vorholt J (2010) Site and plant species are important determinants of the *Methylobacterium* community composition in the plant phyllosphere. *ISME J* 4: 719–728.
42. Berg G, Smalla K (2009) Plant species and soil type cooperatively shape the structure and function of microbial communities in the rhizosphere. *FEMS Microbiol Ecol* 68: 1–13.
43. Ikeda S, Okubo T, Kaneko T, Inaba S, Maekawa T, et al. (2010) Community shifts of soybean stem-associated bacteria responding to different nodulation phenotypes and N levels. *ISME J* 4: 315–326.