

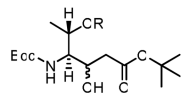
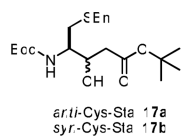
Published in final edited form as:

*J Org Chem.* 2012 ; 77(7): 3686. doi:10.1021/jo300438f.

## Correction

**Correction to A Simple Microscale Method for Determining the Relative Stereochemistry of Statine Units** [*J. Org. Chem.* **2008**, *73*, 9228–9234 DOI: 10.1021/jo8012429] Alejandro Preciado and Philip G. Williams\*

Pages 9232–9233. The configurations of **17a-b** and **21a-c** are incorrectly depicted. Compounds **17a-b**, which are derived from L-cysteine, have the configuration of C-4 incorrectly drawn as *S* rather than *R* in the original publication. The configuration of C-5 in **21a-c**, which was not depicted should be as shown as below for completeness. Finally, **43a** should be depicted as a methyl ester rather than a cyclic depsipeptide. We apologize for any inconvenience or confusion caused by these errors.



*anti*-Thr-Sta **21a** R = En  
*syn*-Thr-Sta **21b** R = En  
*anti*-Thr-Sta **21c** R = H

