

RESEARCH

Open Access

Antibiotics in critically ill patients: a systematic review of the pharmacokinetics of β -lactams

Joao Gonçalves-Pereira^{1,2*} and Pedro Póvoa^{1,2}

Abstract

Introduction: Several reports have shown marked heterogeneity of antibiotic pharmacokinetics (PK) in patients admitted to ICUs, which might potentially affect outcomes. Therefore, the pharmacodynamic (PD) parameter of the efficacy of β -lactam antibiotics, that is, the time that its concentration is above the bacteria minimal inhibitory concentration ($T > MIC$), cannot be safely extrapolated from data derived from the PK of healthy volunteers.

Methods: We performed a full review of published studies addressing the PK of intravenous β -lactam antibiotics given to infected ICU patients. Study selection comprised a comprehensive bibliographic search of the PubMed database and bibliographic references in relevant reviews from January 1966 to December 2010. We selected only English-language articles reporting studies addressing β -lactam antibiotics that had been described in at least five previously published studies. Studies of the PK of patients undergoing renal replacement therapy were excluded.

Results: A total of 57 studies addressing six different β -lactam antibiotics (meropenem, imipenem, piperacillin, cefpirome, cefepime and ceftazidime) were selected. Significant PK heterogeneity was noted, with a broad, more than twofold variation both of volume of distribution and of drug clearance (Cl). The correlation of antibiotic Cl with creatinine clearance was usually reported. Consequently, in ICU patients, β -lactam antibiotic half-life and $T > MIC$ were virtually unpredictable, especially in those patients with normal renal function. A better PD profile was usually obtained by prolonged or even continuous infusion. Tissue penetration was also found to be compromised in critically ill patients with septic shock.

Conclusions: The PK of β -lactam antibiotics are heterogeneous and largely unpredictable in ICU patients. Consequently, the dosing of antibiotics should be supported by PK concepts, including data derived from studies of the PK of ICU patients and therapeutic drug monitoring.

Keywords: administration, dosage, β -lactam antibiotics, microdialysis, pharmacodynamics, pharmacokinetics, ICU

Introduction

Infection and sepsis, whether community- or hospital-acquired, are important causes of morbidity and mortality in ICU patients [1,2]. Despite all of the research, sepsis therapy continues to depend on supportive management of the different organ dysfunctions and failures and on specific therapy for infection with timely and appropriate antibiotics and/or focus control.

The β -lactam antibiotics, because of their large antimicrobial spectrum and low toxicity, are among the first-line therapies for critically ill patients, especially

when a Gram-negative infection is suspected. However, the efficacy of antibiotics is not easily evaluated, since the clinical response is usually unnoticeable before 48 hours of therapy [3]. Moreover, the unavailability of routine therapeutic drug monitoring for the great majority of these drugs makes it difficult to distinguish clinical failure due to underdosing from lack of *in vivo* organism susceptibility.

Considerable evidence demonstrates that free drug time above bacteria minimal inhibitory concentration ($f T > MIC$) is the measure of drug exposure most closely linked to the ability of β -lactam antibiotics to kill the target bacteria [4]. $T > MIC$ is dependent on the half-life ($T_{1/2}$) of β -lactam antibiotics and their serum concentration.

* Correspondence: joagpster@gmail.com

¹Polyvalent Intensive Care Unit, São Francisco Xavier Hospital, Estrada do Forte do Alto do Duque, 1449-005 Lisboa, Portugal

Full list of author information is available at the end of the article

The serum concentration of an antibiotic depends on the dose delivered, its bioavailability and its volume of distribution (V_d). V_d is a mathematical construct and refers to the size of a compartment necessary to account for the total amount of the drug, assuming that its concentration in the whole body is equal to that measured in plasma. Drugs that distribute essentially in the extracellular fluid (mainly hydrophilic) have low V_d , whilst drugs that have rapid cellular uptake (lipophilic) have high V_d [5,6].

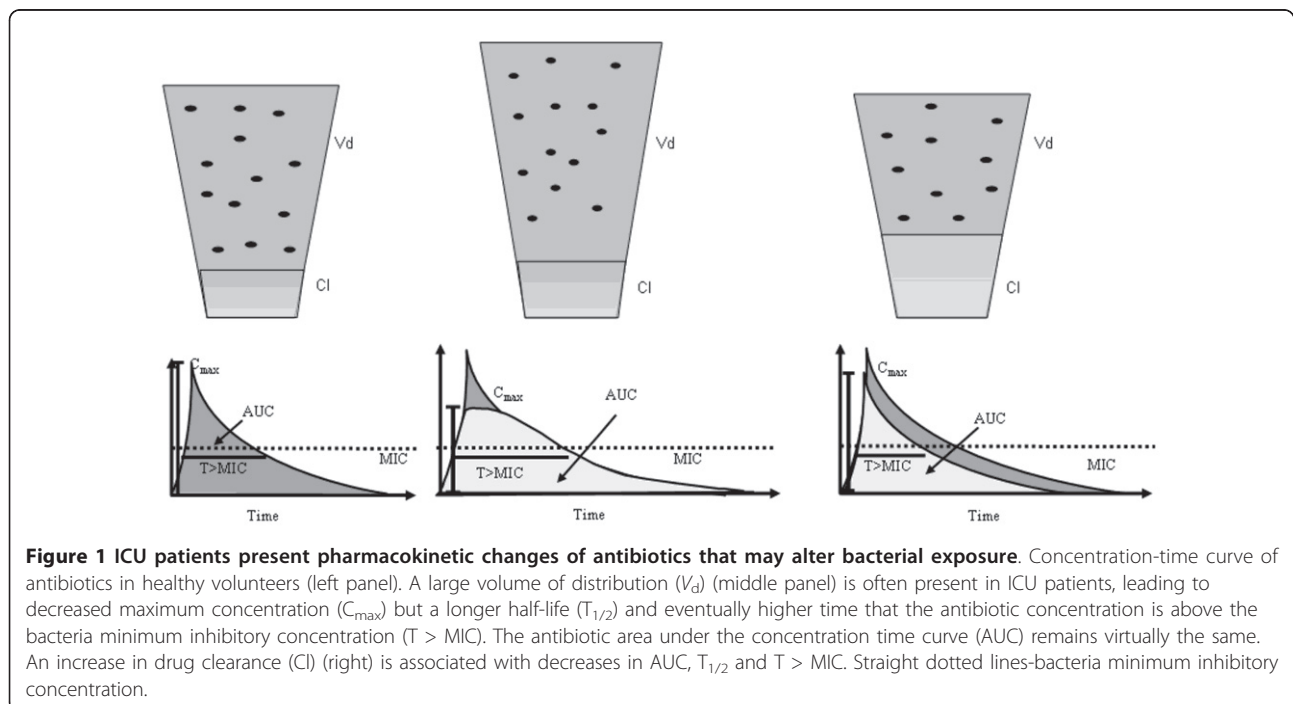
Both V_d and drug clearance (Cl) may be increased in ICU patients [7]. Therapeutic procedures, notably large-volume and blood products infusions, positive pressure ventilation, surgical procedures, capillary leak and reduction in albumin serum concentration all contribute to alter the concentration-time relationship of many drugs. A rise in the V_d , although it reduces drug concentration, might proportionally increase $T_{1/2}$, since $T_{1/2} = V_d / (Cl \times 0.693)$ [7]. On the contrary, a high Cl may reduce the exposure of antibiotics to bacteria (Figure 1).

Renal Cl may be increased in septic patients because of increased renal blood flow. This has recently been shown to be a common finding in ICU patients, particularly surgical and trauma patients [8] but also septic medical patients [9]. Besides, in the study by Baptista *et al.* [9], the authors showed that commonly used formulas used to calculate glomerular filtration rate usually underestimate creatinine (Cr) Cl. Consequently, these authors recommended direct Cr Cl measurement.

Moreover in ICU patients, maldistribution of blood flow in the microcirculation [10], namely, in patients in septic shock, may further decrease the drug concentration in the infected tissue [11]. These pharmacokinetic (PK) changes are sometimes influenced by the clinical course of the infection itself [12]. Consequently, PK parameters measured in healthy volunteers may not correctly predict concentrations in septic ICU patients, particularly early in the course of a severe infection [13,14].

Ideally, individualized dosing strategies should account for the altered PK and pathogen susceptibility in each patient. Despite the fact that some studies addressed this issue, this information had not yet been aggregated. Furthermore, β -lactam antibiotic PK are rarely analysed outside clinical trials. Therefore, we performed a systematic review of studies that addressed the PK parameters of β -lactam antibiotics in ICU patients to assess the relationship between dose and schedule of β -lactam antibiotics and their adequacy according to pharmacodynamic (PD) end points. We also reviewed studies assessing the concentrations of β -lactam antibiotics in different tissues. Our primary intention was to aggregate PK information in this particular population and to contribute to the design of individualized dosing regimens of these drugs.

We also included studies that involved the development of PD models using PK of ICU patients and bacterial MICs. These techniques allow the calculation of the presumed $T > MIC$ and therefore the percentage of patients in which the antibiotic will achieve its PD



target: that is, the antibiotic's probability of target attainment (PTA) [15,16]. The cumulative fraction of response (CFR) is calculated by multiplying the PTA obtained for each MIC by the MIC distribution according to a microbiological database [16].

Materials and methods

The data for this review were identified by a search of PubMed (January 1966 to December 2010) as well as

bibliographic references from relevant articles, including reviews on this subject and all selected studies. The search terms used were 'antibiotic' or 'carbapenem' or 'penicillins' or 'cephalosporins', and 'intensive care' or 'critically ill' or 'critical care' or 'severe sepsis' or 'septic shock', and 'pharmacokinetics' or 'pharmacodynamics'. All relevant studies in the English-language literature that described antibiotic PK in critically ill patients were assessed (Figure 2).

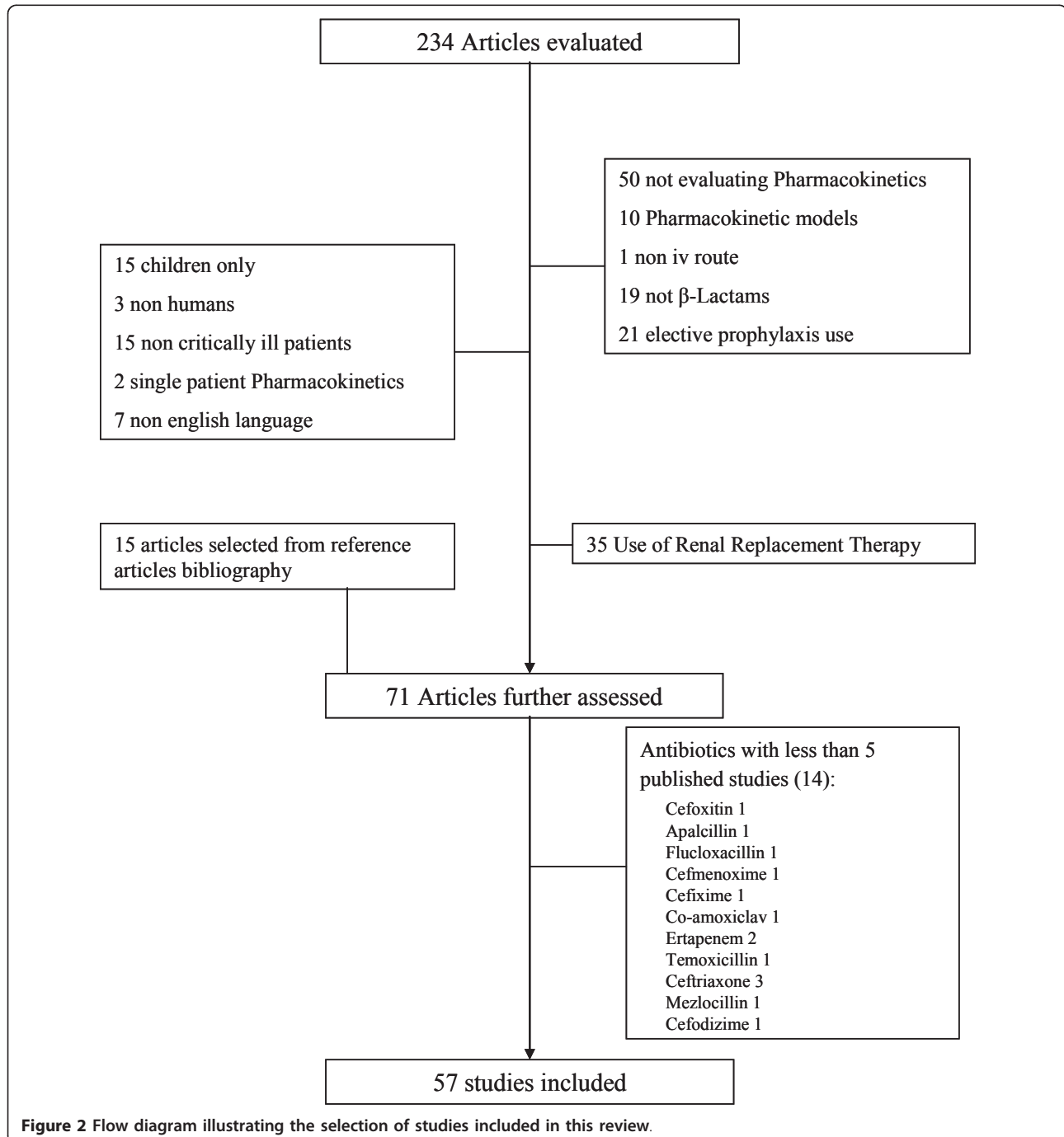


Figure 2 Flow diagram illustrating the selection of studies included in this review.

Only studies that described PK of antibiotics given intravenously to infected patients were selected. Studies referring to prophylactic antibiotics or to PK in patients under any type of renal replacement therapy were excluded. In fact, these studies are mainly directed to the measurement of CI during renal replacement therapy to determine the ideal antibiotic dose and therefore are not easily compared with studies addressing the intrinsic PK of ICU patients. Furthermore, a full revision of those studies has recently been published [17].

For the purpose of our systematic review, we analysed only studies of antibiotics with at least five published references. This threshold of five referenced studies was arbitrarily chosen so that we could derive more representative and consistent data on the PK of each antibiotic. The weighted mean of the V_d was calculated so that we could present a graphic representation of each analysed antibiotic (Figure 3).

Results

A total of 57 studies assessing an aggregate of six different β -lactam antibiotics were selected.

Carbapenem

Meropenem

Several studies have addressed meropenem PK in ICU septic patients. High V_d and CI have usually been reported, as well as a low binding fraction: < 10% [18]. Consequently, a large heterogeneity of PK parameters was found, exceeding a twofold variation (Table 1 and Figure 3). The larger reported V_d , a mean of 34.4 L, was noted on the second day of therapy in eight ventilator-associated pneumonia (VAP) patients [19] with a mean body weight of 73 kg. In a Thai VAP population ($N = 9$) with a lower mean body weight (only 54.2 kg), the mean V_d was 6.0 L despite also being measured after 48 hours of therapy with meropenem [20]. This supports the hypothesis of a potential relationship between body weight and V_d .

Meropenem CI ranged from a mean of 4.7 L/hour to a mean of 15.4 L/hour and was generally found to be closely correlated to Cr Cl. In fact, in patients with severe sepsis, the six patients with the lower Cr Cl (< 50 mL/minute) had the higher $T > MIC$ and area under the concentration time curve (AUC) (230.2 mg \times hour/L vs.

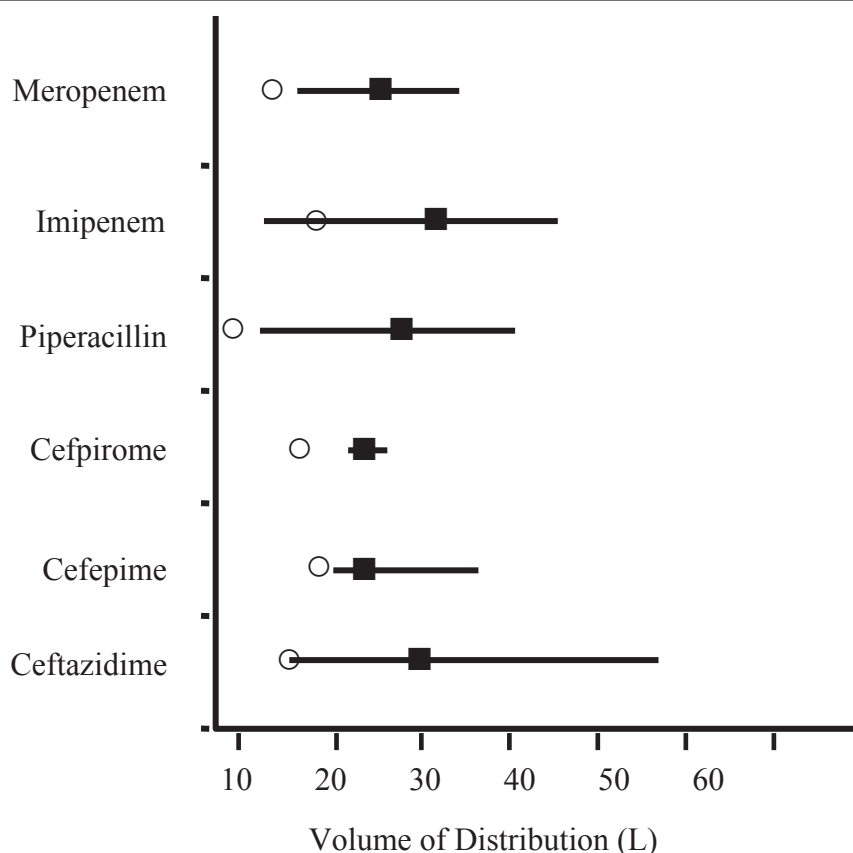


Figure 3 Heterogeneity of volume of distribution in litres of β -lactam antibiotics in ICU patients. Open circles: volume of distribution in healthy volunteers [44,51,89-92]; filled squares: weighted means of volume of distribution in the studies; straight lines: ranges of the means of volume of distribution in the studies.

Table 1 Pharmacokinetic parameters of β -lactam antibiotics^a

Antibiotic drug classes and drugs	PK parameters			Patient demographics	Study	
	V_{dr} , L	Cl, L/hour	$T_{1/2}$, hours		Study types [93]	References
Carbapenems						
Meropenem	21.2 ± 4.7 ^b	11.3 ± 4 ^b	1.4 ± 0.4 ^b	N = 11 Age 63.1 years [23 to 81] Mild to severe intraabdominal sepsis	Descriptive	Lovering <i>et al.</i> , 1995 [22]
Meropenem	26.6 ± 3.2 ^c	9.4 ± 1.2 ^c	2.0	N = 15 Age 55.3 ± 14.3 years Severe sepsis	Randomized, controlled cross-over	Thalhammer <i>et al.</i> , 1999 [27]
Meropenem	34.4 ± 15.9	11 ± 4.3	0.4 ± 0.12	N = 8 Age 55 ± 8 years VAP	Descriptive	de Stoppelaar <i>et al.</i> , 2000 [19]
Meropenem	19.7 ± 5	7.3 ± 3.1	3.1 ± 1.5	N = 14 Age 73.3 ± 8.1 years Severe sepsis	Descriptive	Kitzes-Cohen <i>et al.</i> , 2002 [21]
Meropenem	16.0 ± 3.7 ^d	8.5 ± 3.2 ^d	1.4 ± 0.6 ^d	N = 9 Age 39.6 ± 15.7 years VAP	Not randomized, controlled cross-over	Jaruratanasirikul <i>et al.</i> , 2005 [20]
Imipenem	Imipenem 17.7 ± 4	Imipenem 7.0 ± 2.5	Imipenem 2 ± 0.3	Imipenem N = 10 Age 65 ± 19 years	Randomized, parallel controlled	Novelli <i>et al.</i> , 2005 [29]
Meropenem	Meropenem 27.1 ± 7.7	Meropenem 11.5 ± 3.1	Meropenem 2.1 ± 0.5	Meropenem N = 10 Age 67 ± 19 years Severe sepsis		
Meropenem	23.8 ± 4.9	6.7 ± 4.2	3.7 ± 1.9	N = 6 Age 65.7 ± 11.2 years Peritonitis	Descriptive	Karjagin <i>et al.</i> , 2008 [25]
Meropenem	22.7	13.6 ± 1.3	NR	N = 10 Age range 48 to 63 years Severe sepsis	Randomized, parallel controlled	Roberts <i>et al.</i> , 2009 [24]
Meropenem	Meropenem 30.1 [21.7 to 53.9] ^e	Meropenem 8 [5 to 10.99] ^e	Meropenem 2.1 [1.7 to 3.4]	Meropenem N = 16	Cross-sectional	Taccone <i>et al.</i> , 2010 [23]
Piperacillin	Piperacillin 26.6 [20.3 to 30.1] ^e	Piperacillin 8.4 [5.5 to 18.1] ^e	Piperacillin 2.6 [1.5 to 3.8]	Piperacillin N = 27		
Ceftazidime	Ceftazidime 33.6 [25.2 to 49.7] ^e	Ceftazidime 3.8 [2.5 to 5.5] ^e	Ceftazidime 5.8 [4.1 to 7.4]	Ceftazidime N = 18		
Cefepime	Cefepime 25.2 [23.1 to 30.8] ^e	Cefepime 5.5 [4.6 to 8.4] ^e	Cefepime 3.4 [2.3 to 5.3]	Cefepime N = 19 All patients: median age 63 years Severe sepsis or septic shock		
Imipenem	31.4 ± 11.7	14.4 ± 4.5	1.6 ± 1.3	N = 10 Age 44 ± 12.2 years Severe sepsis	Descriptive	McKindley <i>et al.</i> , 1996 [34]
Imipenem	18.5	6.3 ± 0.8	2.0	N = 6 Age 63.5 ± 16.7 years Severe sepsis	Not randomized, parallel, controlled	Tegeeder <i>et al.</i> , 2002 [32]
Imipenem	45.5 ± 47.2	12.1 ± 12.0	2.9 ± 1.7	N = 50 Age 45.2 ± 17 years Presumed Gram-negative sepsis	Cross-sectional	Belzberg <i>et al.</i> , 2004 [28]

Table 1 Pharmacokinetic parameters of β ? β ?-lactam antibiotics^a (Continued)

Imipenem	12.2 \pm 9.9 ^f	12.3 \pm 4.2	NR	N = 20 Age 60.5 years VAP	Randomized, parallel, controlled	Sakka <i>et al.</i> , 2007 [31]
Imipenem	27.2 \pm 6.5	13.3 \pm 5.2	1.4 \pm 0.2	N = 6 Age 53.3 \pm 19.9 years Severe sepsis	Not randomized, parallel, controlled	Dahyot <i>et al.</i> , 2008 [33]
Imipenem	16.7 \pm 5.3 ^g	8.7 \pm 5.3 ^g	1.5 \pm 0.7 ^g	N = 9 Age 63.3 \pm 14.9 years VAP	Not randomized, controlled, cross-over	Jaruratanasirikul and Sudsai, 2009 [30]
Penicillins						
Piperacillin	25.0 \pm 17.2	23.8 \pm 17.2	1.5 \pm 2.1	N = 11 Age 43.6 \pm 15.9 years Surgical patients	Descriptive	Shikuma <i>et al.</i> , 1990 [36]
Piperacillin	19.5 \pm 3.4 ^b	8.4 \pm 1.4 ^b	1.8 \pm 0.3 ^b	N = 10 Age 37.7 \pm 2.8 years Burn patients	Descriptive	Bourget <i>et al.</i> , 1996 [38]
Piperacillin	40.7 \pm 8.7	8.2 \pm 2	4.1 \pm 1.3	N = 6 Age 64 \pm 7 years Septic shock	Not randomized, parallel, controlled	Joukhadar <i>et al.</i> , 2001 [44]
Piperacillin	34.6 \pm 6.8 ^c	11.8 \pm 4.3 ^c	2.4 \pm 1.2 ^c	N = 7 Age range 45 to 76 years Severe sepsis	Not randomized, controlled, cross-over	Langgartner <i>et al.</i> , 2007 [39]
Piperacillin	11.7 ^f	17.2	0.4	N = 13 Age 37.5 \pm 19.4 years Severe sepsis	Randomized, parallel, controlled	Roberts <i>et al.</i> , 2009 [45]
Cephalosporins						
Cefpirome	23.6 \pm 8.0	8.0 \pm 3.0	2.2 \pm 0.5	N = 9 Age 31 years [19 to 53] Severe sepsis	Not randomized, parallel, controlled	Jacolot <i>et al.</i> , 1999 [47]
Cefpirome	26.4 \pm 7.9	8.8 \pm 3.4	3.1 \pm 1.2	N = 12 Age 41.2 \pm 19 years Severe sepsis	Descriptive	Lipman <i>et al.</i> , 2001 [48]
Cefpirome	25.9 \pm 7.1	4.5 \pm 0.7	3.3 \pm 0.5	N = 12 Age 67.2 \pm 8.1 years Severe sepsis or septic shock	Not randomized, parallel, controlled	Joukhadar <i>et al.</i> , 2002 [52]
Cefpirome	21.9 \pm 4.5	4.8 \pm 1.6	3.1 \pm 0.9	N = 11 Age 66 \pm 8 years Severe sepsis	Not randomized, parallel, controlled	Sauermann <i>et al.</i> , 2005 [51]
Cefepime	32.6 \pm 17.5	7.5 \pm 3.1	3.5 \pm 1.1	N = 7 Age 73.7 \pm 4.9 years Severe sepsis	Descriptive	Kieft <i>et al.</i> , 1993 [53]
Cefepime	21.8 \pm 5.1	7.6 \pm 2.0	3 \pm 1.2	N = 13 Age 55 years Severe sepsis	Descriptive	Lipman <i>et al.</i> , 1999 [56]
Cefepime	36.1 \pm 11.8	8.8 \pm 2.4	2.8 \pm 0.6	N = 12 Age 41 \pm 13 years Burn patients	Descriptive	Bonapace <i>et al.</i> , 1999 [57]
Cefepime	26.0 ^b	9.1 \pm 1.5 ^b	2.5 \pm 0.6 ^b	N = 6 Age 39.8 \pm 11.3 years Burn patients	Descriptive	Sampol <i>et al.</i> , 2000 [61]
Cefepime	Cefepime 19.6 \pm 3.6	Cefepime 7.1 \pm 3.6	Cefepime 2.9 \pm 3.2	Cefepime N = 13 Age 48.2 \pm 21.2 years	Cross-sectional	Conil <i>et al.</i> , 2007 [54]
Ceftazidime	Ceftazidime 28.8	Ceftazidime 7.5 \pm 3.8	Ceftazidime 3.1 \pm 2.1	Ceftazidime N = 17 Age 62.9 \pm 22.4 years Burn patients		
Cefepime	28.7 \pm 13.3 ^d	9.1 \pm 5.6 ^d	4.3 \pm 4.2	N = 21 Age 55.1 years (median) Nosocomial pneumonia	Cross-sectional	Chapuis <i>et al.</i> , 2010 [55]

Table 1 Pharmacokinetic parameters of β ? β -lactam antibiotics^a (Continued)

Ceftazidime	24.5	7.5	2.1	N = 16 Age range 18 to 70 years Pseudomonas infection	Descriptive	Rondanelli <i>et al.</i> , 1986 [64]
Ceftazidime	49.3 ± 18.2 ^e	15.5 ± 2.5 ^e	1.8 ± 0.5 ^e	N = 5 Age 52.3 years [21 to 69] VAP	Not randomized, controlled, cross-over	Langer <i>et al.</i> , 1991 [76]
Ceftazidime	29.5 ± 8.7	4.2 ± 1.9	6.1 ± 2.5	N = 12 Age 60 ± 13 years VAP	Not randomized, controlled, cross-over	Bressolle <i>et al.</i> , 1992 [77]
Ceftazidime	18.9 ± 9 ^c	5.1 ^c	3.5 ± 1.6 ^c	N = 12 Age 57 ± 12 years Suspected Gram-negative sepsis	Not randomized, controlled, cross-over	Benko <i>et al.</i> , 1996 [67]
Ceftazidime	15.0 ± 4.3	5.2 ± 2.2	1.3 ± 1.2	N = 10 Age 48 ± 15.1 years Severe sepsis	Descriptive	Young <i>et al.</i> , 1997 [65]
Ceftazidime	56.9 ± 25.9	9.1 ± 4.8	4.8 ± 1.9	N = 15 Age 59.3 ± 14.6 years Severe sepsis	Descriptive	Gómez <i>et al.</i> , 1999 [66]
Ceftazidime	22.9 [11.8 to 28.1]	2.8 [0.2 to 7.8]	7.7 [2 to 44.7]	N = 21 Age range 27 to 73 years Melioidosis	Not randomized, parallel, controlled	Angus <i>et al.</i> , 2000 [71]
Ceftazidime	25.6 ± 11.2 ^c	11.0 ± 5.3 ^c	1.7 ± 0.7 ^c	N = 14 Age 36.1 ± 12.8 years Gram-negative nosocomial pneumonia	Not randomized, parallel, controlled	Hanes <i>et al.</i> , 2000 [70]
Ceftazidime	19.6 [14 to 28] ^{f, e}	5.1 [2.3 to 8.9] ^f	4.2 [1.3 to 12.3] ^f	N = 6 Age 64 years [42 to 87] Surgical peritonitis	Not randomized, parallel, controlled	Buijk <i>et al.</i> , 2002 [74]

^aCl: clearance; NR: not reported; PK: pharmacokinetics; T_{1/2}: half-life; VAP: ventilator-associated pneumonia; V_d: volume of distribution. ^bfirst-day PK; ^cPK after bolus dosing; ^dPK after 1-g bolus dosing; ^efor 70 kg; ^fcentral compartment; ^gPK after 500-mg bolus dosing. Except where otherwise indicated, data are means, means ± standard deviations or medians [interquartile ranges].

119.4 mg × hour/L; *P* = 0.001), despite a reduction in the dose administered, from 1 g every 8 h (tid) to 1 g every 12 h (bid) [21].

One study addressed the variability of individual meropenem PK between the first and fourth days of therapy in 11 surgical patients [22]. Despite an increase in Cr Cl from a mean of 63.9 to 79.1 mL/minute during the study period, meropenem V_d, Cl and AUC remain unchanged. Nevertheless, in another study, by Taccone *et al.* [23], predefined targets were reached in only 75% of severe sepsis and septic shock patients after the first dose of 1 g of meropenem (Table 2), despite the inclusion of patients with acute renal failure (22%) who did not receive renal replacement therapy. These authors concluded that PK changes induced by sepsis were largely unpredictable and that none of the evaluated clinical parameters were predictive of PK adequacy: namely, age, severity, presence of shock, use of vasopressors and mechanical ventilation. Also, Roberts *et al.* [24] showed that the V_d in patients with severe sepsis had great variability, both in the same patient (especially the central compartment: roughly 45%) and in different patients

(nearly 27%). In their study, despite the fact that all patients had a serum Cr < 1.36 mg/dL, the meropenem Cl variability (in the same patient and between patients) still ranged between 10% and 20%.

The time of infusion of meropenem has also been shown to influence its T > MIC. In a cross-over study of nine Thai VAP patients [20], after 48 hours of therapy, 1 g of meropenem tid in 30-minute infusions provided an adequate T > MIC in 74.7% of the patients, for a MIC of 1 mg/L. However, with a MIC of 16 mg/L, only the meropenem regimen of 2 g tid given in an extended infusion (two hours) led to a T > MIC > 40% [20].

Meropenem tissue PK have been evaluated by microdialysis in several studies (Table 3). The tissue-to-plasma meropenem mean ratio on the first day of antibiotic therapy was found to be 0.74 in the peritoneum [25] and 0.44 in subcutaneous fat [24]. The meropenem CFR was calculated for the 10 patients for whom serum levels were measured in this study according to the Mystic microbiological database [26]. The CFRs were 100% for Enterobacteriaceae and 40.6% for *Pseudomonas*

Table 2 Pharmacodynamic targets of β -lactam antibiotics^a

Antibiotics	PD targets	Percentage of patients achieving targets	References
Meropenem, 1 g tid or 3 g/day CI	40% $f T > MIC$, with f assumed to be 98%. CFR according to Mystic database	PTA for MIC = 2 mg/L: bolus 100%, CI 100% PTA for MIC = 8 mg/L: bolus 70%, CI 100% CFR for EC: bolus 100%, CI 100% CFR for PA: bolus 40.6%, CI 100%	Roberts <i>et al.</i> , 2009 [24]
Ceftazidime, 2 g	70% $T > 4 \times$ EUCAST breakpoint of PA	28%	Taccone <i>et al.</i> , 2010 [23]
Cefepime, 2 g	70% $T > 4 \times$ EUCAST breakpoint of PA	16%	
Meropenem, 1 g	40% $T > 4 \times$ EUCAST breakpoint of PA	75%	
Piperacillin/tazobactam, 4.5 g	50% $T > 4 \times$ EUCAST breakpoint of PA	44%	
Imipenem 1 g tid or 2 g/day CI	40% $f T > MIC$, with f assumed to be 80%	MIC = 2 mg/L bolus dosing 88%, CI 100% MIC = 4 mg/L bolus 75%, CI 86%	Sakka <i>et al.</i> , 2007 [31]
Piperacillin/tazobactam 4.5 g qid or 13.5 g CI	50% $f T > MIC$. CFR according to Mystic database	PTA for MIC = 0.25 mg/L bolus 79.2%, CI 100% PTA for MIC = 1 mg/L bolus 60%, CI 100% CFR for 18 g/day: bolus 53.4%, CI 92.5% CFR for 13.5 g/day: bolus 40%, CI 92.4%	Roberts <i>et al.</i> , 2009 [46]
Cefpirome 2 g bid	60% $T > MIC$	PTA for MIC = 4 mg/L: bolus 60%, CI (4 g/day) 100% PTA for MIC = 16 mg/L: bolus 10%, CI (4 g/day) 50%	Lipman <i>et al.</i> , 2001 [48]
Cefpirome 2 g tid	60% $T > MIC$ plasma and tissue	PTA for MIC = 4 mg/L: plasma 100%, tissue 100% PTA for MIC = 16 mg/L: plasma 87.5%, tissue 75%	Sauermaun <i>et al.</i> , 2005 [51]
Cefpirome 2 g bid	65% $f T > MIC$, with f assumed to be 90%. CFR according to EUCAST database	CFR for EC: bolus 99.9%, CI (4 g/day) 100% CFR for PA: bolus 56.1%, CI (4 g/day) 84.4%	Roos <i>et al.</i> , 2007 [50]
Cefepime 2 g	60% $T > MIC$ MIC = 8 mg/L (NCCLS break point of PA)	PTA with 1 g bid 45% PTA with 2 g bid 68% PTA for MIC = 4 mg/L: 1 g bid 68%, 2 g bid 89%	Bonapace <i>et al.</i> , 1999 [57]
Cefepime 2 g	65% $f T > MIC$, with f assumed to be 90%. CFR according to Queensland Health Pathology Service	CFR for EC: 2 g bid 78.9%, CI (4 g/day) 96.9% CFR for PA: 2 g bid 54%, CI (4 g/day) 91.7%	Roos <i>et al.</i> , 2006 [60]
Ceftazidime 1 g every 4 hours	100% $T > 4 \times MIC$ (isolated pathogens; if negative cultures 100% $T > 16$ mg/L)	Ceftazidime 47.8% PTA with 1 g every 3 hours 88.2%	Conil <i>et al.</i> , 2007 [54]
Cefepime 2 g tid		Cefepime 20% PTA with 1 g every 4 hours 88.2%	
Cefepime 2 g tid	50% $f T > MIC$, with f assumed to be 85%	PTA for MIC = 8 mg/L 91.8% PTA for MIC = 32 mg/L 50.3%	Nicasio <i>et al.</i> , 2009 [59]
Cefepime 2 g (each 12 to 36 hours)	50% $T > MIC$ MIC = 8 mg/L	First dose 67%; steady-state 44%	Chapuis <i>et al.</i> , 2010 [55]
Ceftazidime 2 g tid	100% $T > 5 \times MIC$ MIC = 8 mg/L (PA break point)	10% PTA for CI (6 g/day) 60%	Young <i>et al.</i> , 1997 [65]
Ceftazidime 2 g tid or 6 g/day CI	100% $T > 5 \times MIC$ MIC = 8 mg/L (PA break point)	Bolus 20%	Lipman <i>et al.</i> , 1999 [68]

Table 2 Pharmacodynamic targets of β ? β -lactam antibiotics^a (Continued)

		Percentage of time on target (mean)	
Ceftazidime 1.5 g tid or 4.5 g/day CI	T > 4 × MIC plasma and peritoneum (isolated pathogens)	CI 100% Plasma: bolus dosing 100%, CI 100% Peritoneum: bolus 88%, CI 100%	Buijk <i>et al.</i> , 2002 [74]
Ceftazidime 2 to 6 g/day CI	100% T > 5 × MIC MIC = 8 mg/L (PA break point) Target concentration 40 ± 10 mg/L	35.9%	Aubert <i>et al.</i> , 2010 [72]
Meropenem 2 g tid or 3 g CI	T > MIC (isolated susceptible pathogens)	Bolus T = 100%; CI T = 100%	Thalhammer <i>et al.</i> , 1999 [27]
Meropenem 1 g tid	T > MIC (isolated pathogens)	T = 90.8%	de Stoppelaar <i>et al.</i> , 2000 [19]
Meropenem 1 g bid or 1 g tid	T > MIC (isolated pathogens)	T > 4 × MIC T = 52% T = 80.9% (Cr Cl > 50 mL/minute; 1 g tid) T = 91.7% (Cr Cl < 50 mL/minute; 1 g bid)	Kitzes-Cohen <i>et al.</i> , 2002 [21]
Imipenem 1 g tid	T > MIC (isolated sensitive [MIC ≤ 2 mg/L] pathogens)	T = 100%; T > 4 × MIC T = 87.5%	Novelli <i>et al.</i> , 2005 [29]
Meropenem 1 g tid	T > MIC (isolated sensitive [MIC ≤ 2 mg/L] pathogens)	T = 100%; T > 4 × MIC T = 87.5%	
Meropenem 1 g tid (bolus or 3-hour infusion) or 2 g tid (3-hour infusion)	T > MIC	For MIC = 1 mg/L: 1 g tid bolus T = 74.7%, 1 g tid 3 hours T = 93.6%, 2 g tid 3 hours T = 98.6% For MIC = 16 mg/L: 1 g tid bolus T = 28.3%, 1 g tid 3 hours T = 37.8%, 2 g tid 3 hours T = 57.9%	Jaruratanasirikul <i>et al.</i> , 2005 [20]
Meropenem 1 g tid	T > MIC	For MIC = 4 mg/L: plasma T = 87%, peritoneum T = 87% For MIC = 16 mg/L: plasma T = 55%, peritoneum T = 43%	Karjagin <i>et al.</i> , 2008 [25]
Imipenem 500 mg qid (30 minutes or 2-hour infusion) or 1 g qid (2-hour infusion)	T > MIC	For MIC = 1 mg/L: 500 mg qid 30 minutes T = 64.7%, 500 mg qid 2 hours T = 76.5%, 1 g qid 2 hours T = 93.4% For MIC = 4 mg/L: 500 mg qid 30 minutes T = 20.3%, 500 mg qid 2 hours T = 17.7%, 1 g qid 2 hours T = 60.3%	Jaruratanasirikul and Sudsai, 2009 [30]
Piperacillin 3 g qid or 8 g/day CI	T > MIC	For MIC = 16 mg/L: bolus dosing T = 62%, CI T = 100% For MIC = 32 mg/L: bolus T = 39%, CI T = 65%	Rafati <i>et al.</i> , 2006 [40]
Cefepime 2 g bid	T > MIC MIC = 7 mg/L (MIC ₉₀ of PA)	T = 80%	Kieft <i>et al.</i> , 1993 [53]
Ceftazidime 2 g tid or 3 g/day CI	T > MIC MIC = 4 mg/L (MIC of one isolated PA)	Bolus T = 92%; CI T = 100%	Benko <i>et al.</i> , 1996 [67]
Ceftazidime 2 g tid or 60 mg/kg/day CI	T > MIC (isolated pathogens)	Bolus T = 92.9%; CI T = 100%	Hanes <i>et al.</i> , 2000 [70]

^aAB: *Acinetobacter baumannii*; bid: dose every 12 hours; CFR: cumulative fraction of response; CI: continuous infusion; Cr Cl: creatinine clearance; EC: *Escherichia coli*; EUCAST: European Committee on Antimicrobial Susceptibility Testing; f: free drug fraction; KP: *Klebsiella pneumoniae*; MIC: minimal inhibitory concentration; MIC₉₀: 90th percentile of MIC in a bacteria population; NCCLS: National Committee for Clinical Laboratory Standards; PA: *Pseudomonas aeruginosa*; PD: pharmacodynamics; PTA: probability of target attainment; qid: dose every 6 hours; SA: *Staphylococcus aureus*; T > MIC: time that antibiotic concentration is above bacteria MIC; tid: dose every 8 hours.

aeruginosa after bolus dosing, whilst with continuous infusion they were 100% for both bacteria, despite the use of a small daily dose (2 g/day) [27].

Imipenem

In ICU patients, increased V_d and CI of imipenem have also been reported (Table 1). Therefore, its $T_{1/2}$ and T > MIC may be difficult to predict, depending on the relative changes of these two parameters. This difficulty was

shown by Belzberg *et al.* [28] in a cohort of ICU surgical and trauma patients with presumed Gram-negative sepsis. In this relatively young population (mean age 45.2 ± 17 years and mean body weight 79.7 ± 17.7 kg), 44% of patients presented trough levels lower than the intended 4 mg/L at steady state. A mean Cr Cl of 103.8 mL/minute was found, but with large variability: two patients had renal failure and nineteen patients had a Cr Cl >

Table 3 Tissue penetration of β -lactams^a

Antibiotics	Samples	Patient demographics	Concentration ratios ^b	References
Muscle and subcutaneous tissue				
Meropenem	Microdialysis in subcutaneous tissue	N = 10 severe sepsis, 5 continuous infusion	Bolus 0.44 Continuous infusion 0.57 (day 2)	Roberts <i>et al.</i> , 2009 [24]
Imipenem	Microdialysis in muscle and subcutaneous tissue	N = 11 (6 patients) Severe sepsis	Patients • Muscle 0.1 • Subcutaneous 0.14 Volunteers • Muscle 0.5 • Subcutaneous 0.43	Tegeder <i>et al.</i> , 2002 [32]
Imipenem	Microdialysis in muscle	N = 12 (6 patients) Severe sepsis	Patients 1 Volunteers 0.97	Dahyot <i>et al.</i> , 2008 [33]
Piperacillin	Microdialysis in muscle and subcutaneous tissue	N = 12 (6 patients) Septic shock	Patients • Muscle 0.19 • Subcutaneous 0.1 Volunteers • Muscle 0.55 • Subcutaneous 0.31	Joukhadar <i>et al.</i> , 2001 [44]
Piperacillin	Microdialysis in subcutaneous tissue	N = 13 Severe sepsis	Bolus 0.21 Continuous infusion 0.2	Roberts <i>et al.</i> , 2009 [45]
Cefpirome	Microdialysis in muscle	N = 18 (12 patients) Severe sepsis or septic shock	Patients 0.63 Volunteers 0.83	Joukhadar <i>et al.</i> , 2002 [52]
Cefpirome	Microdialysis in subcutaneous tissue	N = 18 (11 patients) Severe sepsis	Patients 0.43 Volunteers 0.79	Sauermann <i>et al.</i> , 2005 [51]
Burned skin				
Cefepime	Biopsy of burned area	N = 6 Burn patients	Day 3 1.52 (point concentration 3 to 5 hours after dose)	Sampol <i>et al.</i> , 2000 [61]
Peritoneum				
Meropenem	Microdialysis in peritoneum	N = 6 Surgical peritonitis	0.74	Karjagin <i>et al.</i> , 2008 [25]
Ceftazidime	Peritoneal drainage	N = 18 Surgical peritonitis	Day 2 • Continuous infusion 0.56 • Bolus 0.35	Buijk <i>et al.</i> , 2002 [74]
Imipenem	ELF (bronchoscopy)	N = 8 Pneumonia	0.20 (point concentration ratio 2 hours after dose)	Muller-Serieys <i>et al.</i> , 1987 [35]
Imipenem	Bronchial secretions (tracheal aspirate)	N = 10 Trauma patients with VAP	NR	McKindley <i>et al.</i> , 1996 [34]
Piperacillin	ELF (bronchoscopy)	N = 10 VAP	0.57 (point concentration ratio 5 hours after dose)	Boselli <i>et al.</i> , 2004 [41]
Piperacillin	ELF (bronchoscopy)	N = 40 VAP	0.44 (point concentration ratio 4 hours after dose)	Boselli <i>et al.</i> , 2008 [43]
Piperacillin	Bronchial secretions (tracheal aspirate)	N = 8 VAP	0.36	Jehl <i>et al.</i> , 1994 [42]
Cefepime	ELF (bronchoscopy)	N = 20 VAP	1.04 (point concentration ratio)	Boselli <i>et al.</i> , 2003 [63]
Cefepime or ceftazidime	Bronchial secretions (tracheal aspirate)	N = 5 cefepime VAP N = 4 ceftazidime VAP	Cefepime < 0.02 Ceftazidime < 0.05	Klekner <i>et al.</i> , 2006 [62]
Ceftazidime	Bronchial secretions (tracheal aspirate)	N = 5 Pneumonia	0.12	Langer <i>et al.</i> , 1991 [76]
Ceftazidime	Bronchial secretions (tracheal aspirate)	N = 12 Nosocomial pneumonia	0.76	Bressolle <i>et al.</i> , 1992 [77]
Ceftazidime	ELF (bronchoscopy)	N = 15 VAP	0.21 (point concentration ratio at steady state)	Boselli <i>et al.</i> , 2004 [69]

^aELF: epithelial lining fluid; NR: not reported. ^bMean area under the concentration time curve (AUC) tissue-to-plasma ratio unless otherwise stated.

120 mL/minute. Nevertheless, no correlation was found between PK parameters and body weight, severity of disease, blood pressure or renal function [28].

Another study compared meropenem and imipenem first-dose PK in patients with normal renal function (serum Cr < 1.5 mg/dL). Again, both V_d and Cl were significantly elevated, although more so in the meropenem group [29]. However, their $T > MIC$ for sensitive isolated pathogens were similar. Again, there was a relationship between Cr Cl and $T_{1/2}$: Patients with a Cr Cl < 50 mL/minute had a significantly longer $T_{1/2}$ for both antibiotics.

The PD efficacy of imipenem is also influenced by the dose and the time of infusion [30]. Using PK data from a cross-over steady-state study of VAP patients, Jaruratana-sirikul and Sudsai [30] showed by modelling of imipenem PD that, for a MIC of 4 mg/L, a 500-mg dose delivered every 6 hours (qid) for 30 minutes achieved a $T > MIC$ of 64.7% and increased to 76.5% with a 2-hour infusion. However, this study excluded shock and renal failure patients (Cr Cl < 60 mL/minute). With PD modelling of PK data derived from another 20 VAP patients [31], continuous infusion led to improved PTA despite the use of lower dosages (Table 2). In this latter study, all patients had f imipenem $T > MIC$ of 100%, but three patients died.

Tissue microdialysis had been used to assess imipenem PK, but with very dissimilar results (Table 3): namely, the tissue-to-plasma ratio. This has been found to be markedly depressed in a cohort of severe critically ill patients compared to healthy volunteers (subcutaneous tissue-to-plasma 0.14 vs. 0.43 and muscle tissue-to-plasma 0.11 vs. 0.5, respectively) [32]. However, Dahyot *et al.* [33] disputed these results and found f imipenem in plasma and muscle to be virtually superimposed at any time, both in patients and in healthy volunteers. Some differences exist between these two studies. In the Tegeder *et al.* study [32], the patients had lower Cr Cl (medians 32.8 mL/minute vs. 156 mL/minute) and samples were collected at steady state and not after the first dose. Moreover, Dahyot *et al.* [33] accounted only for the f imipenem in plasma and found higher imipenem V_d and Cl. Different methods of calculating *in vivo* microdialysis recovery rates may also explain some of the diverse observed results. Nevertheless, low imipenem penetration ratios, as low as 0.06 [34,35], in bronchial secretions were reported in pneumonia patients (Table 3).

Penicillins

Piperacillin

Similarly to other β -lactams, piperacillin V_d and Cl have generally been found to be increased in ICU patients (Table 1). However, most studies have excluded renal failure patients.

Piperacillin Cl and trough concentrations were strongly related to Cr Cl [36-38]. Taccone *et al.* [23] showed that only 15% of patients with high Cr Cl (> 50 mL/minute) maintained piperacillin concentrations > 50% of $T > 4 \times MIC$ after the first antibiotic dose, as opposed to 71% of patients with lower Cr Cl ($P = 0.03$). In contrast, in 10 young burn patients (mean total burned area $40.8 \pm 3.1\%$) with a mean Cr Cl of 119.8 mL/minute and *Pseudomonas aeruginosa* infection, the authors found a 20% increase in $T_{1/2}$ after the first dose of antibiotic compared to the third day of therapy, which was related to a larger V_d (mean of 19.6 L vs. 16.4 L) [38]. Overall, the piperacillin AUC was similar in the two measurements (mean of $640 \text{ mg} \times \text{hour/L}$ vs. $622 \text{ mg} \times \text{hour/L}$).

Piperacillin is stable for at least 24 hours at room temperature, making it a suitable choice for continuous infusion. With this strategy, higher steady-state concentrations are expected, theoretically providing a higher $T > MIC$ even with the use of a lower daily dose [39]. A study by Rafati *et al.* [40] also supports this strategy. These authors showed that, for a MIC = 16 mg/L, the $T > MIC$ was higher with continuous infusions (8 g/day) than with bolus dosing (3 g tid) (100% vs. 62%, respectively). However, the mortality rate was similar.

In VAP patients, piperacillin showed good penetration in bronchial secretions [41-43]. Nevertheless, its epithelial lining fluid (ELF) steady-state concentration was lower than the MIC for *Pseudomonas aeruginosa* after a 4.5-g tid dose [41]. With continuous infusion, an increase in pulmonary concentration was found, at least in the subset of patients with moderate renal failure (measured Cr Cl < 50 mL/minute), about three times higher than in the patients with normal renal function [43]. However, no relationship was found between ELF piperacillin concentration and clinical success. Similar concentrations were found in the eight patients who died or had persistent infections and in those who experienced therapeutic success [43].

Subcutaneous tissue-to-plasma ratio and PK have been assessed in microdialysis studies. In six septic shock patients (mean norepinephrine dose $0.8 \mu\text{g/kg/minute}$) [44], the subcutaneous tissue-to-plasma AUC ratio was only 0.1, one-third of that measured in healthy volunteers. Peak tissue concentration was also delayed in patients (122 minutes in patients compared with 27 minutes in healthy volunteers), and $T_{1/2}$ in tissues was nearly nine times longer. In 13 younger patients with less severe sepsis [45], the AUC tissue-to-plasma ratio was roughly 0.2. In accordance with their serum PK (as well as PK of another five patients) [46], piperacillin/tazobactam CFR was calculated to be 92.3% with continuous infusion (13.5 g/day) and 53.4% with bolus dosing (4.5 g qid, or 18 g/day). Again, no correlation was found

between tissue concentration and outcomes. Despite the low tissue concentration levels, all patients in both groups survived [45].

Cephalosporins

Cefpirome

Cefpirome PK studies have produced heterogeneous results. A 2-g dose was adequate in young trauma patients (Cr Cl \geq 50 mL/minute) and in similar healthy volunteers. After the first dose, the mean T > MIC were 75% and 80%, respectively (with a MIC of 4 mg/L, $P = 0.76$) [47]. However, in 12 similar patients, a lower T > MIC (60%) was found, which was probably related to higher cefpirome Cl [48]. After four days of therapy, the cefpirome mean PK parameters remained similar (T > MIC 67% and AUC 242 mg \times hour/L vs. 306 mg \times hour/L at steady state). Further analyses [49] showed a strong correlation between Cr Cl and either cefpirome or cefepime Cl ($r^2 = 0.81$). Patients with the lower range of T > MIC had a higher Cr Cl, usually above 144 mL/minute [49]. According to these measured PK data, the authors performed a simulation to demonstrate improved CFR of cefpirome given as a continuous infusion to treat *Pseudomonas aeruginosa* infection, from 56.1% to 84.4% (Table 2) [50].

Cefpirome tissue PK were evaluated on the basis of microdialysis. Sauermann *et al.* [51] found a low subcutaneous tissue concentration in patients with severe sepsis, almost half of healthy volunteers, despite a longer plasma $T_{1/2}$ (183 minutes vs. 95 minutes; $P < 0.05$). Similar results were reported by Joukhadar *et al.* [52], who found muscle-to-plasma ratios of 0.63 in patients and 0.83 in healthy volunteers (Table 3).

Cefepime

Roughly a twofold variation of cefepime V_d has been reported in PK studies (Table 1) of severe sepsis and septic shock patients [23], elderly septic patients [53], young burn patients [54] and nosocomial pneumonia patients [55]. Cefepime Cl has also been found to be closely correlated with Cr Cl in this last listed cohort ($r^2 = 0.77$) [55], in another cohort of septic patients ($r^2 = 0.74$) [56] and in burn patients ($r^2 = 0.58$) [57]. Therefore, patients with renal dysfunction may experience toxicity.

In 21 septic patients receiving cefepime at a dose of 2 g bid, more than twofold peak variations and roughly 40-fold trough variations were observed. Again, the cefepime Cl correlated with Cr Cl ($r^2 = 0.77$). Two patients with low Cr Cl (19 and 12 mL/minute) had trough levels > 20 mg/L despite dosage adjustment. They both had neurologic symptoms (namely, confusion and muscle jerks) that were not identified as toxicity but resolved promptly after drug arrest [55].

A cefepime bolus of 2 g bid was found to be insufficient to reach a high PD target after the first dose (Table 2), both in 80% of young burn patients (burn area 21.8%) with high mean Cr Cl (119.2 mL/minute) [54] and in the Taccone *et al.* study [23], in which only 16% of patients achieved the intended target.

Two other studies have evaluated cefepime PK, one of which addressed the first day of therapy for 55 nosocomial pneumonia or bacteraemia patients (67% trauma) [58] and the other of which described the status of 32 VAP patients on the second day of cefepime treatment [59]. Both studies unveiled a relationship between V_d and total body weight as well as between excretion, either elimination rate constant [59] or Cl [58], and Cr Cl. However, significant interpatient variability was again observed, with regard to both cefepime Cl (58%) and central compartment V_d (67%) [58].

A PD model was developed with this VAP population PK data: despite a 2-g tid dose, PTA > 90% was achieved only with a MIC \leq 8 mg/L [59]. In another cefepime PD model, the CFR of a 2-g bid dose, used to treat both *Escherichia coli* and *Klebsiella pneumoniae*, was 78.9%. However, for *Pseudomonas aeruginosa*, CFR was only 53.6% (Table 2) and increased with either 2 g tid or continuous infusion (4 g/day or 6 g/day) to 84.9%, 91.7% and 94.8% respectively. Nevertheless, the CFR for *Acinetobacter baumannii* [60], even with a continuous infusion of 6 g/day, was only 75%, reemphasizing the importance of appropriate dosing and the potential benefit of continuous infusion against difficult-to-treat bacteria.

Also, the cefepime tissue concentration was assessed in biopsy samples collected from the skin of burn patients three to five hours after a bolus dose on day 3 of antibiotic therapy. A mean biopsy-to-plasma cefepime ratio of 1.5 (range 0.4 to 5.1) was found [61]. Klekner *et al.* [62] were unable to detect cefepime in bronchial secretions from any of the five studied patients six hours after an 80 mg/kg dose. However, using continuous infusion (4 g/day) to treat VAP patients, Boselli *et al.* [63] found, at steady state, higher and similar plasma and ELF concentrations (mean of 13.5 mg/L and 14.1 mg/L, respectively). Although different sampling methods may have influenced these differences, continuous infusion seems to prolong T > MIC in the lungs. Nevertheless, no correlation with therapeutic outcomes was reported.

Ceftazidime

Several studies have shown ceftazidime PK heterogeneity in ICU septic patients with *Pseudomonas* infections (mostly nosocomial pneumonia) [64], severe sepsis [65,66] and burns [54]. Similarly to other β -lactams, the authors noted a large variation of both V_d and Cl (Table 1) and consequently significant interpatient variability in

$T_{1/2}$ and trough concentrations. Also, a correlation between CI and Cr Cl was usually reported [65,66].

Continuous infusion of ceftazidime was compared with bolus dosing in five different studies [67-71]. In all, there was an increase in $T > MIC$ with continuous infusion despite lower daily doses. However, only in severe melioidosis was this strategy associated with lower mortality (3 of 10 patients vs. 9 of 11 patients) [71]. Those patients had low Cr Cl (26.6 mL/minute) and received ceftazidime dosages adjusted to their body weight (4 mg/kg/hour or 40 mg/kg tid, for a mean body weight of 49.4 kg). Ceftazidime steady-state concentration was measured in another cohort of 92 patients receiving continuous infusions [72]. Therapeutic drug monitoring was performed on the second day of therapy. The mean serum concentration was 46.9 mg/L, but again with a very wide range of serum concentrations (7.4 to 162.3 mg/L). Therefore, dosage modification was common because of low serum levels (36.9%) and high serum levels (27.2%), with the latter being associated with lower Cr Cl (mean of 51 mL/minute compared with 103 mL/minute for patients with low serum levels). Similar results were shown in another large ceftazidime PK study assessing a mixed septic population with a higher mean Cr Cl (123 mL/minute) [73]. The lower $T > MIC$ was found in patients with the higher Cr Cl, especially after bolus dosing (Table 2).

Continuous infusion of ceftazidime (4.5 g/day) was also associated with a higher peritoneal AUC at day 2 compared to bolus dosing (1.5 g tid) in surgical patients with peritonitis (522 mg \times hour/L vs. 316 mg \times hour/L; $P = 0.01$) [74], despite similar serum AUC (and Cr Cl > 30 mL/minute). Therefore, although serum $T > 4 \times MIC$ was $> 90\%$ in all patients, peritoneal $T > 4 \times MIC$ was still $> 90\%$ with continuous infusion but only 44% with bolus dosing. Nevertheless, no difference in mortality was noted (25% vs. 33%; $P = 1.0$). A PD model of ceftazidime in ICU patients also showed higher PTA with continuous infusion (100% for $MIC \leq 8$ mg/L) than with bolus dosing [75].

Ceftazidime concentration in bronchial secretions was measured in four studies of VAP patients. Very low concentrations, < 0.5 mg/L and < 0.3 mg/L, were found in two of them [62,76]. Bressole *et al.* [77] found a higher ratio between bronchial secretions and plasma concentration (0.76) in patients infected after abdominal surgery. A longer $T_{1/2}$ (6.1 hours) and a lower CI (4.2 L/hour) may explain some of these differences. With continuous infusion, a ratio of 0.21 between ELF and serum was observed [69].

Discussion

In our systematic review, we have aggregated information from 57 prospective studies related to the PK of β -

lactam antibiotics, which are among the most often agents used to treat sepsis in ICU patients [78]. Overall, an increased V_d of all the studied antibiotics was reported (Figure 3), which was related to total body weight [58,73], but with significant variability. Drug CI was also increased and usually related to Cr Cl. Those changes were largely unpredictable, with important interpatient variability. However, the higher CI values were noted in studies that excluded patients with renal dysfunction, a common strategy, which may limit the interpretation of the data reported.

Therapeutic drug monitoring was rarely performed. In addition, data on the daily variation of PK parameters in ICU patients, as well as the ideal frequency of this monitoring, are currently limited. Nevertheless, two of the reviewed studies [55,72] showed that inadequate dosing may be common in this population and may jeopardize β -lactam antibiotics efficacy or even lead to toxicity [79]. Roberts *et al.* [80] measured piperacillin/tazobactam concentrations and found that 50.4% of patients first measurement were low. The clinical efficacy of using drug levels to achieve adequate concentrations had never been properly evaluated. In a recent study, PD modelling was used to empirically treat 94 VAP in critically ill patients at high risk of infection with antibiotic-resistant *Pseudomonas aeruginosa* [81]. A three-hour infusion regimen of either cefepime or meropenem at a high dosage (2 g tid) was initiated, followed by both antibiotic and dose de-escalation whenever bacteria with a low MIC were identified. The infection-related mortality decreased from 21.6% to 8.5% ($P = 0.029$).

The PD targets of β -lactam antibiotics may be different in patients with severe bacterial infections. McKinnon *et al.* [82] evaluated ceftazidime and cefepime PD by using PK data from previous clinical trials [83]. Maintaining a $T > MIC$ as high as 100% was associated with a significantly greater clinical cure and bacteriologic eradication than a shorter time (ceftazidime: 82% vs. 33%, $P = 0.002$; cefepime: 97% vs. 44%, $P = 0.001$). Also, in a febrile neutropenia population of 60 patients treated with meropenem, a calculated $T > MIC$ of 83% was found in responders, whilst those with a poor clinical response had a $T > MIC$ of only 60% [84]. It has also been suggested that, at least in vivo, maximum killing of bacteria is achieved at higher concentrations, four to five times MIC [85], accounting for antibiotic penetration in infected tissues. As such, concentrations of β -lactam antibiotics may need to be maintained well above the MIC for extended periods, especially in patients with life-threatening infections. Accordingly, different PD targets have been proposed in the different studies addressing ICU patients, which sometimes make their comparison difficult.

An improved PD profile of β -lactams may be obtained by promoting a longer exposure with more frequent dosing, extended infusions or continuous infusions [86,87]. Several of the studies that we reviewed reported PD benefits of continuous infusions (even using small daily doses) (Table 2). Also, PD modelling tends to support this strategy. Nevertheless, almost none of the studies addressed reported a decrease in mortality. In addition, a recently published meta-analysis of 14 prospective studies did not show a significant benefit of using this strategy (odds ratio 1.00, 95% confidence interval 0.48 to 2.06; $P = 1.00$) [88].

An increasing number of studies have addressed β -lactam antibiotic tissue concentration. Despite the theoretical advantage of analysing the drug concentration at the site of infection, there are no data to support a relationship between these concentrations and outcomes. Furthermore, there are still controversial issues involved in interpreting these data, namely, microdialysis [32,33]. Therefore, we think that, at present, no recommendation can be made regarding antibiotic tissue PK.

Conclusions

The PK of β -lactam antibiotics are significantly changed in septic ICU patients. Dosage and schedule regimens based on data from healthy volunteers may be misleading. Therapeutic drug monitoring and PD modelling according to measured PK previously showed promising results. Continuous infusion, although theoretically useful, has not been shown to lead to improved outcomes. The clinical significance of tissue PK monitoring remains to be determined.

Key messages

- Among ICU patients, the PK of β -lactam antibiotics are markedly unpredictable.
- A large volume of distribution is commonly observed in ICU patients and contributes to a lower antibiotic concentration, but also to a greater exposure time.
- An increased glomerular filtration rate is usually associated with a short half-life of β -lactam antibiotics, whilst renal failure is associated with a greater exposure and increased risk of accumulation.
- Continuous infusion of β -lactam antibiotics commonly increases the time that the antibiotic concentration exceeds its MIC and may therefore increase efficacy.
- Therapeutic drug monitoring of β -lactam antibiotic concentration may help to improve its efficacy and prevent toxicity, but currently is unavailable in most clinical settings.

Abbreviations

AUC: area under the concentration time curve; bid: dose every 12 hours; CFR: cumulative fraction of response; Cl: drug clearance; Cr Cl: creatinine clearance; ELF: epithelial lining fluid; f : free drug fraction; K_{el} : elimination rate constant; MIC: minimum inhibitory concentration; MIC₉₀: 90th percentile of MIC in a bacteria population; PD: pharmacodynamics; PK: pharmacokinetics; PTA: probability of target attainment; qid: dose every six hours; $T_{1/2}$: half-life; tid: dose every eight hours; $T > MIC$: antibiotic concentration time over bacteria MIC; VAP: ventilator-associated pneumonia; V_d : volume of distribution.

Author details

¹Polyvalent Intensive Care Unit, São Francisco Xavier Hospital, Estrada do Forte do Alto do Duque, 1449-005 Lisboa, Portugal. ²CEDOC, Faculty of Medical Sciences, New University of Lisbon, Campo dos Mártires da Pátria, 130, 1169-056 Lisboa, Portugal.

Authors' contributions

Both JGP and PP searched the literature, analysed the data and wrote the manuscript. Both authors read and approved the final manuscript for publication.

Competing interests

JGP has received honoraria from and served as an advisor for Pfizer, AstraZeneca, Gilead Sciences Inc., Abbott Laboratories, Wyeth Lederle, Janssen-Cilag and Merck Sharp & Dohme Corp. JGP also has received an unrestricted research grant from AstraZeneca. PP has received honoraria from and served as an advisor for AstraZeneca, Ely Lilly and Co., Gilead Sciences Inc., Janssen-Cilag, Merck Sharp & Dohme Corp., Novartis and Pfizer Inc.

Received: 30 May 2011 Revised: 28 June 2011

Accepted: 13 September 2011 Published: 13 September 2011

References

1. Brun-Buisson C: **The epidemiology of the systemic inflammatory response.** *Intensive Care Med* 2000, **26**(Suppl 1):S64-S74.
2. Vincent JL, Rello J, Marshall J, Silva E, Anzueto A, Martin CD, Moreno R, Lipman J, Gomersall C, Sakr Y, EPIC II Group of Investigators: **International study of the prevalence and outcomes of infection in intensive care units.** *JAMA* 2009, **302**:2323-2329.
3. Póvoa P: **Serum markers in community-acquired pneumonia and ventilator-associated pneumonia.** *Curr Opin Infect Dis* 2008, **21**:157-162.
4. Craig WA: **Basic pharmacodynamics of antibacterials with clinical applications to the use of β -lactams, glycopeptides, and linezolid.** *Infect Dis Clin North Am* 2003, **17**:479-501.
5. Estes L: **Review of pharmacokinetics and pharmacodynamics of antimicrobial agents.** *Mayo Clin Proc* 1998, **73**:1114-1122.
6. Pea F, Viale P, Furlanut M: **Antimicrobial therapy in critically ill patients: a review of pathophysiological conditions responsible for altered disposition and pharmacokinetic variability.** *Clin Pharmacokinet* 2005, **44**:1009-1034.
7. Mehrotra R, De Gaudio R, Palazzo M: **Antibiotic pharmacokinetic and pharmacodynamic considerations in critical illness.** *Intensive Care Med* 2004, **30**:2145-2156.
8. Fuster-Lluch O, Gerónimo-Pardo M, Peyró-García R, Lizán-García M: **Glomerular hyperfiltration and albuminuria in critically ill patients.** *Anaesth Intensive Care* 2008, **36**:674-680.
9. Baptista JP, Udy AA, Sousa E, Pimentel J, Wang L, Roberts JA, Lipman J: **A comparison of estimates of glomerular filtration in critically ill patients with augmented renal clearance.** *Crit Care* 2011, **15**:R139.
10. Verdant C, De Backer D: **How monitoring of the microcirculation may help us at the bedside.** *Curr Opin Crit Care* 2005, **11**:240-244.
11. Levitt DG: **The pharmacokinetics of the interstitial space in humans.** *BMC Clin Pharmacol* 2003, **3**:3.
12. Triginer C, Izquierdo I, Fernandez R, Rello J, Torrent J, Benito S, Net A: **Gentamicin volume of distribution in critically ill septic patients.** *Intensive Care Med* 1990, **16**:303-306.
13. Hansen M, Christrup LL, Jarlov JO, Kampmann JP, Bonde J: **Gentamicin dosing in critically ill patients.** *Acta Anaesthesiol Scand* 2001, **45**:734-740.

14. Roberts JA, Lipman J: **Antibacterial dosing in intensive care: pharmacokinetics, degree of disease and pharmacodynamics of sepsis.** *Clin Pharmacokinet* 2006, **45**:755-773.
15. Drusano GL: **Pharmacokinetics and pharmacodynamics of antimicrobials.** *Clin Infect Dis* 2007, **45**(Suppl 1):S89-S95.
16. Mouton JW: **Impact of pharmacodynamics on breakpoint selection for susceptibility testing.** *Infect Dis Clin North Am* 2003, **17**:579-598.
17. Choi G, Gomersall CD, Tian Q, Joynt GM, Li AM, Lipman J: **Principles of antibacterial dosing in continuous renal replacement therapy.** *Blood Purif* 2010, **30**:195-212.
18. Shah PM: **Parenteral carbapenems.** *Clin Microbiol Infect* 2008, **14**:175-180.
19. de Stoppelaar F, Stolk L, van Tiel F, Beysens A, van der Geest S, de Leeuw P: **Meropenem pharmacokinetics and pharmacodynamics in patients with ventilator-associated pneumonia.** *J Antimicrob Chemother* 2000, **46**:150-151.
20. Jaruratanasirikul S, Sriwiriyan S, Punyo J: **Comparison of the pharmacodynamics of meropenem in patients with ventilator-associated pneumonia following administration by 3-hour infusion or bolus injection.** *Antimicrob Agents Chemother* 2005, **49**:1337-1339.
21. Kitzes-Cohen R, Farin D, Piva G, De Myttenaere-Bursztein SA: **Pharmacokinetics and pharmacodynamics of meropenem in critically ill patients.** *Int J Antimicrob Agents* 2002, **19**:105-110.
22. Lovering AM, Vickery CJ, Watkin DS, Leaper D, McMullin CM, White LO, Reeves DS, MacGowan AP: **The pharmacokinetics of meropenem in surgical patients with moderate or severe infections.** *J Antimicrob Chemother* 1995, **36**:165-172.
23. Taccone FS, Laterre PF, Dugernier T, Spapen H, Delattre I, Witebolle X, De Backer D, Layeux B, Wallemacq P, Vincent JL, Jacobs F: **Insufficient β -lactam concentrations in the early phase of severe sepsis and septic shock.** *Crit Care* 2010, **14**:R126.
24. Roberts JA, Kirkpatrick CM, Roberts MS, Robertson TA, Dalley AJ, Lipman J: **Meropenem dosing in critically ill patients with sepsis and without renal dysfunction: intermittent bolus versus continuous administration? Monte Carlo dosing simulations and subcutaneous tissue distribution.** *J Antimicrob Chemother* 2009, **64**:142-150.
25. Karjagin J, Lefevre S, Oselin K, Kipper K, Marchand S, Tikkerberri A, Starkopf J, Couet W, Sawchuk RJ: **Pharmacokinetics of meropenem determined by microdialysis in the peritoneal fluid of patients with severe peritonitis associated with septic shock.** *Clin Pharmacol Ther* 2008, **83**:452-459.
26. Rhomberg PR, Jones RN: **Contemporary activity of meropenem and comparator broad-spectrum agents: MYSTIC program report from the United States component (2005).** *Diagn Microbiol Infect Dis* 2007, **57**:207-215.
27. Thalhammer F, Traunmüller F, El Menyawi I, Frass M, Hollenstein UM, Locker GJ, Stoiser B, Staudinger T, Thalhammer-Scherer R, Burgmann H: **Continuous infusion versus intermittent administration of meropenem in critically ill patients.** *J Antimicrob Chemother* 1999, **43**:523-527.
28. Belzberg H, Zhu J, Cornwell EE, Murray JA, Sava J, Salim A, Velmahos GC, Gill MA: **Imipenem levels are not predictable in the critically ill patient.** *J Trauma* 2004, **56**:111-117.
29. Novelli A, Adembri C, Livi P, Fallani S, Mazzei T, De Gaudio AR: **Pharmacokinetic evaluation of meropenem and imipenem in critically ill patients with sepsis.** *Clin Pharmacokinet* 2005, **44**:539-549.
30. Jaruratanasirikul S, Sudsai T: **Comparison of the pharmacodynamics of imipenem in patients with ventilator-associated pneumonia following administration by 2 or 0.5 h infusion.** *J Antimicrob Chemother* 2009, **63**:560-563.
31. Sakka SG, Glauner AK, Bulitta JB, Kinzig-Schippers M, Pfister W, Drusano GL, Sörgel F: **Population pharmacokinetics and pharmacodynamics of continuous versus short-term infusion of imipenem-cilastatin in critically ill patients in a randomized, controlled trial.** *Antimicrob Agents Chemother* 2007, **51**:3304-3310.
32. Tegeder I, Schmidtko A, Bräutigam L, Kirschbaum A, Geisslinger G, Lötsch J: **Tissue distribution of imipenem in critically ill patients.** *Clin Pharmacol Ther* 2002, **71**:325-333.
33. Dahyot C, Marchand S, Bodin M, Debeane B, Mimoz O, Couet W: **Application of basic pharmacokinetic concepts to analysis of microdialysis data: illustration with imipenem muscle distribution.** *Clin Pharmacokinet* 2008, **47**:181-189.
34. McKindley DS, Boucher BA, Hess MM, Croce MA, Fabian TC: **Pharmacokinetics of aztreonam and imipenem in critically ill patients with pneumonia.** *Pharmacotherapy* 1996, **16**:924-931.
35. Muller-Seriesys C, Bergogne-Berezin E, Rowan C, Dombret MC: **Imipenem penetration into bronchial secretions.** *J Antimicrob Chemother* 1987, **20**:618-619.
36. Shikuma LR, Ackerman BH, Weaver RH, Solem LD, Strate RG, Cerra FB, Zaske DE: **Effects of treatment and the metabolic response to injury on drug clearance: a prospective study with piperacillin.** *Crit Care Med* 1990, **18**:37-41.
37. Conil JM, Georges B, Mimoz O, Dieye E, Ruiz S, Cougot P, Samii K, Houin G, Saivin S: **Influence of renal function on trough serum concentrations of piperacillin in intensive care unit patients.** *Intensive Care Med* 2006, **32**:2063-2066.
38. Bourget P, Lesne-Hulin A, Le Reveillé R, Le Bever H, Carsin H: **Clinical pharmacokinetics of piperacillin-tazobactam combination in patients with major burns and signs of infection.** *Antimicrob Agents Chemother* 1996, **40**:139-145.
39. Langgartner J, Lehn N, Glück T, Herzog H, Kees F: **Comparison of the pharmacokinetics of piperacillin and sulbactam during intermittent and continuous intravenous infusion.** *Chemotherapy* 2007, **53**:370-377.
40. Rafati MR, Rouini MR, Mojtahedzadeh M, Najafi A, Tavakoli H, Gholami K, Fazeli MR: **Clinical efficacy of continuous infusion of piperacillin compared with intermittent dosing in septic critically ill patients.** *Int J Antimicrob Agents* 2006, **28**:122-127.
41. Boselli E, Breilh D, Cannesson M, Xuereb F, Rimmelé T, Chassard D, Saux MC, Allaouchiche B: **Steady-state plasma and intrapulmonary concentrations of piperacillin/tazobactam 4 g/0.5 g administered to critically ill patients with severe nosocomial pneumonia.** *Intensive Care Med* 2004, **30**:976-979.
42. Jehl F, Muller-Seriesys C, de Larminat V, Monteil H, Bergogne-Berezin E: **Penetration of piperacillin-tazobactam into bronchial secretions after multiple doses to intensive care patients.** *Antimicrob Agents Chemother* 1994, **38**:2780-2784.
43. Boselli E, Breilh D, Rimmelé T, Guillaume C, Xuereb F, Saux MC, Bouvet L, Chassard D, Allaouchiche B: **Alveolar concentrations of piperacillin/tazobactam administered in continuous infusion to patients with ventilator-associated pneumonia.** *Crit Care Med* 2008, **36**:1500-1506.
44. Joukhadar C, Frossard M, Mayer BX, Brunner M, Klein N, Siostrzonek P, Eichler HG, Müller M: **Impaired target site penetration of β -lactams may account for therapeutic failure in patients with septic shock.** *Crit Care Med* 2001, **29**:385-391.
45. Roberts JA, Roberts MS, Robertson TA, Dalley AJ, Lipman J: **Piperacillin penetration into tissue of critically ill patients with sepsis: bolus versus continuous administration?** *Crit Care Med* 2009, **37**:926-933.
46. Roberts JA, Kirkpatrick CM, Roberts MS, Dalley AJ, Lipman J: **First-dose and steady-state population pharmacokinetics and pharmacodynamics of piperacillin by continuous or intermittent dosing in critically ill patients with sepsis.** *Int J Antimicrob Agents* 2009, **35**:156-163.
47. Jacolot A, Incagnoli P, Edouard AR, Tod M, Petitjean O, Samii K, Mimoz O: **Pharmacokinetics of ceftiofime during the posttraumatic systemic inflammatory response syndrome.** *Intensive Care Med* 1999, **25**:486-491.
48. Lipman J, Wallis SC, Rickard CM, Fraenkel D: **Low ceftiofime levels during twice daily dosing in critically ill septic patients: pharmacokinetic modelling calls for more frequent dosing.** *Intensive Care Med* 2001, **27**:363-370.
49. Lipman J, Wallis SC, Boots RJ: **Cefepime versus ceftiofime: the importance of creatinine clearance.** *Anesth Analg* 2003, **97**:1149-1154.
50. Roos JF, Lipman J, Kirkpatrick CM: **Population pharmacokinetics and pharmacodynamics of ceftiofime in critically ill patients against Gram-negative bacteria.** *Intensive Care Med* 2007, **33**:781-788.
51. Sauerermann R, Delle-Karth G, Marsik C, Steiner I, Zeitlinger M, Mayer-Helm BX, Georgopoulos A, Müller M, Joukhadar C: **Pharmacokinetics and pharmacodynamics of ceftiofime in subcutaneous adipose tissue of septic patients.** *Antimicrob Agents Chemother* 2005, **49**:650-655.
52. Joukhadar C, Klein N, Mayer BX, Kreischitz N, Delle-Karth G, Palkovits P, Heinz G, Müller M: **Plasma and tissue pharmacokinetics of ceftiofime in patients with sepsis.** *Crit Care Med* 2002, **30**:1478-1482.
53. Kieft H, Hoepelman AI, Knupp CA, van Dijk A, Branger JM, Struyvenberg A, Verhoef J: **Pharmacokinetics of cefepime in patients with the sepsis syndrome.** *J Antimicrob Chemother* 1993, **32**(Suppl B):117-122.

54. Conil JM, Georges B, Lavit M, Seguin T, Tack I, Samii K, Chabanon G, Houin G, Saivin S: **Pharmacokinetics of ceftazidime and cefepime in burn patients: the importance of age and creatinine clearance.** *Int J Clin Pharmacol Ther* 2007, **45**:529-538.
55. Chapuis TM, Giannoni E, Majcherczyk PA, Chioloro R, Schaller MD, Berger MM, Bolay S, Décosterd LA, Bugnon D, Moreillon P: **Prospective monitoring of cefepime in intensive care unit adult patients.** *Crit Care* 2010, **14**:R51.
56. Lipman J, Wallis SC, Rickard C: **Low plasma cefepime levels in critically ill septic patients: pharmacokinetic modeling indicates improved troughs with revised dosing.** *Antimicrob Agents Chemother* 1999, **43**:2559-2561.
57. Bonapace CR, White RL, Friedrich LV, Norcross ED, Bosso JA: **Pharmacokinetics of cefepime in patients with thermal burn injury.** *Antimicrob Agents Chemother* 1999, **43**:2848-2854.
58. Georges B, Conil JM, Seguin T, Dieye E, Cougot P, Decun JF, Lavit M, Samii K, Houin G, Saivin S: **Cefepime in intensive care unit patients: validation of a population pharmacokinetic approach and influence of covariables.** *Int J Clin Pharmacol Ther* 2008, **46**:157-164.
59. Nicasio AM, Ariano RE, Zelenitsky SA, Kim A, Crandon JL, Kuti JL, Nicolau DP: **Population pharmacokinetics of high-dose, prolonged-infusion cefepime in adult critically ill patients with ventilator-associated pneumonia.** *Antimicrob Agents Chemother* 2009, **53**:1476-1481.
60. Roos JF, Bulitta J, Lipman J, Kirkpatrick CM: **Pharmacokinetic-pharmacodynamic rationale for cefepime dosing regimens in intensive care units.** *J Antimicrob Chemother* 2006, **58**:987-993.
61. Sampol E, Jacquet A, Viggiano M, Bernini V, Manelli JC, Lacarelle B, Durand A: **Plasma, urine and skin pharmacokinetics of cefepime in burns patients.** *J Antimicrob Chemother* 2000, **46**:315-317.
62. Klekner A, Bágyi K, Bognár L, Gáspár A, Andrási M, Szabó J: **Effectiveness of cephalosporins in the sputum of patients with nosocomial bronchopneumonia.** *J Clin Microbiol* 2006, **44**:3418-3421.
63. Boselli E, Breilh D, Duflo F, Saux MC, Debon R, Chassard D, Allaouchiche B: **Steady-state plasma and intrapulmonary concentrations of cefepime administered in continuous infusion in critically ill patients with severe nosocomial pneumonia.** *Crit Care Med* 2003, **31**:2102-2106.
64. Rondanelli R, Dionigi RV, Regazzi MB, Maurelli M, Calvi M, Mapelli A: **Ceftazidime in the treatment of Pseudomonas infections in intensive-care patients.** *Int J Clin Pharmacol Ther Toxicol* 1986, **24**:457-459.
65. Young RJ, Lipman J, Gin T, Gomersall CD, Joynt GM, Oh TE: **Intermittent bolus dosing of ceftazidime in critically ill patients.** *J Antimicrob Chemother* 1997, **40**:269-273.
66. Gómez CM, Cordingley JJ, Palazzo MG: **Altered pharmacokinetics of ceftazidime in critically ill patients.** *Antimicrob Agents Chemother* 1999, **43**:1798-1802.
67. Benko AS, Cappelletty DM, Kruse JA, Rybak MJ: **Continuous infusion versus intermittent administration of ceftazidime in critically ill patients with suspected gram-negative infections.** *Antimicrob Agents Chemother* 1996, **40**:691-695.
68. Lipman J, Gomersall CD, Gin T, Joynt GM, Young RJ: **Continuous infusion ceftazidime in intensive care: a randomized controlled trial.** *J Antimicrob Chemother* 1999, **43**:309-311.
69. Boselli E, Breilh D, Rimmelé T, Poupelin JC, Saux MC, Chassard D, Allaouchiche B: **Plasma and lung concentrations of ceftazidime administered in continuous infusion to critically ill patients with severe nosocomial pneumonia.** *Intensive Care Med* 2004, **30**:989-991.
70. Hanes SD, Wood GC, Herring V, Croce MA, Fabian TC, Pritchard E, Boucher BA: **Intermittent and continuous ceftazidime infusion for critically ill trauma patients.** *Am J Surg* 2000, **179**:436-440.
71. Angus BJ, Smith MD, Suputtamongkol Y, Mattie H, Walsh AL, Wuthiekanun V, Chaowagul W, White NJ: **Pharmacokinetic-pharmacodynamic evaluation of ceftazidime continuous infusion vs intermittent bolus injection in septicaemic melioidosis.** *Br J Clin Pharmacol* 2000, **50**:184-191.
72. Aubert G, Carricajo A, Coudrot M, Guyomarc'h S, Auboyer C, Zeni F: **Prospective determination of serum ceftazidime concentrations in intensive care units.** *Ther Drug Monit* 2010, **32**:517-519.
73. Georges B, Conil JM, Seguin T, Ruiz S, Minville V, Cougot P, Decun JF, Gonzalez H, Houin G, Fourcade O, Saivin S: **Population pharmacokinetics of ceftazidime in intensive care unit patients: influence of glomerular filtration rate, mechanical ventilation, and reason for admission.** *Antimicrob Agents Chemother* 2009, **53**:4483-4489.
74. Buijk SL, Gyssens IC, Mouton JW, Van Vliet A, Verbrugh HA, Bruining HA: **Pharmacokinetics of ceftazidime in serum and peritoneal exudate during continuous versus intermittent administration to patients with severe intra-abdominal infections.** *J Antimicrob Chemother* 2002, **49**:121-128.
75. Mouton JW, Punt N, Vinks AA: **A retrospective analysis using Monte Carlo simulation to evaluate recommended ceftazidime dosing regimens in healthy volunteers, patients with cystic fibrosis, and patients in the intensive care unit.** *Clin Ther* 2005, **27**:762-772.
76. Langer M, Cantoni P, Bellosta C, Boccazzi A: **Penetration of ceftazidime into bronchial secretions in critically ill patients.** *J Antimicrob Chemother* 1991, **28**:925-932.
77. Bressolle F, de La Coussaye JE, Ayoub R, Fabre D, Gomeni R, Saissi G, Eledjam JJ, Galtier M: **Endotracheal and aerosol administrations of ceftazidime in patients with nosocomial pneumonia: pharmacokinetics and absolute bioavailability.** *Antimicrob Agents Chemother* 1992, **36**:1404-1411.
78. Fridkin SK, Steward CD, Edwards JR, Pryor ER, McGowan JE Jr, Archibald LK, Gaynes RP, Tenover FC, Project Intensive Care Antimicrobial Resistance Epidemiology (ICARE) Hospitals: **Surveillance of antimicrobial use and antimicrobial resistance in United States hospitals: Project ICARE Phase 2.** *Clin Infect Dis* 1999, **29**:245-252.
79. Chatellier D, Jourdain M, Mangalaboyi J, Ader F, Chopin C, Derambure P, Fourrier F: **Cefepime-induced neurotoxicity: an underestimated complication of antibiotherapy in patients with acute renal failure.** *Intensive Care Med* 2002, **28**:214-217.
80. Roberts JA, Uildemolins M, Roberts MS, McWhinney B, Ungerer J, Paterson DL, Lipman J: **Therapeutic drug monitoring of β -lactams in critically ill patients: proof of concept.** *Int J Antimicrob Agents* 2010, **36**:332-339.
81. Nicasio AM, Eagye KJ, Nicolau DP, Shore E, Palter M, Pepe J, Kuti JL: **Pharmacodynamic-based clinical pathway for empiric antibiotic choice in patients with ventilator-associated pneumonia.** *J Crit Care* 2010, **25**:69-77.
82. McKinnon PS, Paladino JA, Schentag JJ: **Evaluation of area under the inhibitory curve (AUC) and time above the minimum inhibitory concentration ($T > MIC$) as predictors of outcome for cefepime and ceftazidime in serious bacterial infections.** *Int J Antimicrob Agents* 2008, **31**:345-351.
83. Gentry LO, Rodriguez-Gomez G: **Randomized comparison of cefepime and ceftazidime for treatment of skin, surgical wound, and complicated urinary tract infections in hospitalized subjects.** *Antimicrob Agents Chemother* 1991, **35**:2371-2374.
84. Ariano RE, Nyhlén A, Donnelly JP, Sitar DS, Harding GK, Zelenitsky SA: **Pharmacokinetics and pharmacodynamics of meropenem in febrile neutropenic patients with bacteremia.** *Ann Pharmacother* 2005, **39**:32-38.
85. Mouton JW, Vinks AA, Punt NC: **Pharmacokinetic-pharmacodynamic modeling of activity of ceftazidime during continuous and intermittent infusion.** *Antimicrob Agents Chemother* 1997, **41**:733-738.
86. Nicolau DP: **Pharmacodynamic optimization of β -lactams in the patient care setting.** *Crit Care* 2008, **12**:S2.
87. Kasiakou SK, Sermaidis GJ, Michalopoulos A, Soteriades ES, Falagas ME: **Continuous versus intermittent intravenous administration of antibiotics: a meta-analysis of randomised controlled trials.** *Lancet Infect Dis* 2005, **5**:581-589.
88. Roberts JA, Webb S, Paterson D, Ho KM, Lipman J: **A systematic review on clinical benefits of continuous administration of β -lactam antibiotics.** *Crit Care Med* 2009, **37**:2071-2078.
89. Ljungberg B, Nilsson-Ehle I: **Pharmacokinetics of meropenem and its metabolite in young and elderly healthy men.** *Antimicrob Agents Chemother* 1992, **36**:1437-1440.
90. Drusano GL, Standiford HC, Bustamante C, Forrest A, Rivera G, Leslie J, Tatem B, Delaportas D, MacGregor RR, Schimpff SC: **Multiple-dose pharmacokinetics of imipenem-cilastatin.** *Antimicrob Agents Chemother* 1984, **26**:715-721.
91. Paradis D, Vallée F, Allard S, Bisson C, Daviau N, Drapeau C, Auger F, LeBel M: **Comparative study of pharmacokinetics and serum bactericidal activities of cefpirome, ceftazidime, ceftriaxone, imipenem, and ciprofloxacin.** *Antimicrob Agents Chemother* 1992, **36**:2085-2092.
92. Barbhaiya RH, Fargue ST, Gleason CR, Knupp CA, Pittman KA, Weidler DJ, Movahhed H, Tenney J, Martin RR: **Pharmacokinetics of cefepime after**

single and multiple intravenous administrations in healthy subjects.

Antimicrob Agents Chemother 1992, **36**:552-557.

93. Dawson-Saunders B, Trapp RG: *Basic & Clinical Biostatistics*. 2 edition. Chicago: Appleton & Lange; 1994.

doi:10.1186/cc10441

Cite this article as: Gonçalves-Pereira and Póvoa: Antibiotics in critically ill patients: a systematic review of the pharmacokinetics of β -lactams. *Critical Care* 2011 **15**:R206.

**Submit your next manuscript to BioMed Central
and take full advantage of:**

- Convenient online submission
- Thorough peer review
- No space constraints or color figure charges
- Immediate publication on acceptance
- Inclusion in PubMed, CAS, Scopus and Google Scholar
- Research which is freely available for redistribution

Submit your manuscript at
www.biomedcentral.com/submit

