

# Influence of Primary Care Physician Availability and Socioeconomic Deprivation on Breast Cancer from 1988 to 2008: A Spatio-Temporal Analysis

Lung-Chang Chien\*, Anjali D. Deshpande, Donna B. Jeffe, Mario Schootman

Division of Health Behavior Research, Department of Internal Medicine, Washington University School of Medicine, St. Louis, Missouri, United States of America

## Abstract

**Background:** Breast cancer is the most commonly diagnosed cancer and the second leading cause of cancer death among women in the United States. It is unclear how county-level primary care physician (PCP) availability and socioeconomic deprivation affect the spatial and temporal variation of breast cancer incidence and mortality.

**Methods:** We used the 1988–2008 public-use county-based data from nine Surveillance, Epidemiology, and End Results (SEER) programs to analyze the temporal and spatial disparity of PCP availability and socioeconomic deprivation on early-stage incidence, advanced-stage incidence and breast cancer mortality. The spatio-temporal analysis was implemented by a novel structural additive modeling approach.

**Results:** Greater PCP availability was significantly associated with higher early-stage incidence, advanced-stage incidence and mortality during the entire study period while socioeconomic deprivation was significantly negatively associated with early-stage incidence, advanced-stage incidence, and mortality up to 1992. However, the observed influence of PCP availability and socioeconomic deprivation varied by county.

**Conclusions:** We showed important associations of PCP availability and socioeconomic deprivation with the three breast cancer indicators. However, the effect of these associations varied over time and across counties. The association of PCP availability and socioeconomic deprivation was stronger in selected counties.

**Citation:** Chien L-C, Deshpande AD, Jeffe DB, Schootman M (2012) Influence of Primary Care Physician Availability and Socioeconomic Deprivation on Breast Cancer from 1988 to 2008: A Spatio-Temporal Analysis. PLoS ONE 7(4): e35737. doi:10.1371/journal.pone.0035737

**Editor:** Joseph S. Ross, Yale University School of Medicine, United States of America

**Received:** August 17, 2011; **Accepted:** March 20, 2012; **Published:** April 20, 2012

**Copyright:** © 2012 Chien et al. This is an open-access article distributed under the terms of the Creative Commons Attribution License, which permits unrestricted use, distribution, and reproduction in any medium, provided the original author and source are credited.

**Funding:** This research was supported in part by grants from the National Cancer Institute (CA109675, CA91842). The funders had no role in study design, data collection and analysis, decision to publish, or preparation of the manuscript. No additional external funding received for this study.

**Competing Interests:** The authors have declared that no competing interests exist.

\* E-mail: lchien@dom.wustl.edu

## Introduction

Breast cancer is the most commonly diagnosed cancer and the second leading cause of cancer death among women in the United States. Breast cancer indicators, such as incidence and mortality, vary over time and across geographic areas in the US [1]. Most of the increase in breast cancer incidence in the 1980's has been attributed to increase in mammography use. A subsequent decline in incidence likely reflected the saturation of screening in the 1990's [2] and a reduction in postmenopausal hormone replacement therapy use in the early 2000s [3]. Breast cancer mortality in the U.S. significantly declined 1.9% per year from 1998 to 2006 due to early detection and increased adjuvant therapy use [4]. Temporal trends in breast cancer mortality also varied by state [5]. Studies also have documented local areas where breast cancer risk was elevated [6–10].

Two potential explanations for the temporal change and geographic disparities in breast cancer incidence and mortality are primary care physician (PCP) availability and socioeconomic deprivation at the county level. PCP availability is likely to be an important influence on breast cancer indicators as there is clear evidence that physician recommendation for mammography is a

strong predictor of its use [11–16]. Previous studies showed that women living in areas with fewer PCPs may be less likely to be screened and have higher mortality rates [17,18]. Also, county-level socioeconomic deprivation may be related to breast cancer incidence and mortality because areas with greater deprivation may have fewer primary care physicians, limited mammography facilities, and fewer resources for mammography use [19]. Therefore, it becomes important to determine if PCP availability and socioeconomic deprivation can explain observed longitudinal trends and geographic patterns of breast cancer incidence and mortality.

The purpose of this study was to investigate the spatial and temporal variation of breast cancer incidence and mortality due to county-level PCP availability and socioeconomic deprivation using the 1998–2008 county-based data from 200 counties in nine Surveillance, Epidemiology, and End Result (SEER) registries. Specifically, two questions were addressed: (a) whether change in PCP availability and socioeconomic deprivation over time is associated with an ascending or descending trend in breast cancer incidence and mortality from 1988 to 2008, and (b) whether the effect of county-level PCP availability and socioeconomic

deprivation on breast cancer incidence and mortality is more pronounced in some counties.

## Methods

### Data source and breast cancer indicators

The 1988–2008 county-based data from nine population-based SEER programs were used to derive three breast cancer indicators (early-stage incidence, advanced-stage incidence and mortality), year of diagnosis and county information. The nine SEER areas, including 5 states (Connecticut, Hawaii, Iowa, New Mexico, and Utah) and 4 cities (Atlanta, Detroit, San Francisco, and Seattle), covered 200 counties with about 9% of the United States population. Women age 40 and older were included in the study if they were diagnosed with a first primary breast cancer (ICD-9 codes: 174, 217, 233) and/or if they died from breast cancer (ICD-10 codes: C50, D05, D24) between 1988 and 2008. Subsequent cancers among women with first primary breast cancer were not included. The study period began in 1988, the first year for which detailed data about lymph node involvement was available in order to use the American Joint Commission on Cancer tumor-node-metastasis (TNM) staging system. Early-stage breast cancer consisted of *in situ* breast cancer and invasive breast cancers that were <2 cm at the time of diagnosis. Advanced-stage breast cancer was defined as TNM stage II and stage III tumors, which include tumors >2 cm and/or have spread to nearby lymph nodes, and TNM stage IV cancers which have spread beyond the breast and lymph nodes to other parts of the body. Breast cancer mortality was determined by death certificates. Women with breast cancer who died from other causes were not included in the breast cancer mortality rate. Because the data we used was a public-use dataset, written consent given by the patients for their diagnosis with breast cancer and personal information was not needed. County-level boundary data were obtained from the U.S. Census Bureau.

This study measured the effects of two county-level determinants including a PCP availability index and a socioeconomic deprivation index. PCP availability was defined as the ratio of the number of PCP per 100,000 women age 40 and older in each county, and data were obtained from the Area Resource File for each of the 200 counties in each year during 1988–2008. Included

physicians reported their primary specialty area as general or family practice or reported most of their clinical hours in the practice of obstetrics/gynecology or internal medicine [20].

The socioeconomic deprivation index was constructed from a factor analysis of 46 county-level Census variables from the 1990 and 2000 U.S. Census [21]. We selected the 46 variables for analysis from the 2000 census that were identified from four key studies [22–25] and our own conceptualization of socioeconomic deprivation. Eight different domains were considered: education, employment, occupation, housing, poverty, racial/ethnic composition, residential stability, and other. We excluded 23 census variables that measured the inverse of a census variable already included or were very similar constructs. One 6-item common factor emerged: percentage without high school education, percentage unemployed, percentage living in crowded housing (>1 person/room), percentage without a car, percentage without a telephone, and percentage of population below federal poverty rate. Cronbach's alpha was 0.93, and 73.6% of the overall variance was explained by this factor. Because our study data also spanned the 1990 census, we calculated the correlation between the 2000 county index score and the 1990 county index score, computing each index score using the same six census variables. The correlation was 0.881, suggesting that counties with high levels of socioeconomic deprivation in 1990 also had high levels of socioeconomic deprivation in 2000. The correlation between the county-level PCP availability index and the socioeconomic deprivation index was 0.03 ( $p = 0.14$ ).

### Statistical methodology: structural additive regression model

We examined the spatial distributions in breast cancer incidence and mortality rates and possible nonlinear effects using structural additive regression (STAR) models in order to account for temporal autoregressive correlation and spatial autocorrelation among 200 counties during 1988–2008 [26]. Based on these models, we established a varying-coefficient model (VCM) to investigate the influence of the two determinants on the breast cancer indicators over time and a separate random-effects model (REM) to examine the effect of these determinants on the breast cancer indicators in each of the 200 counties. Each of the two models was fitted for the three breast cancer indicators separately.

**Table 1.** Average frequencies and crude rates for three breast cancer indicators in nine SEER areas, 1988–2008.

Area	# of counties	Early-stage incidence		Advanced-stage incidence		Mortality	
		Frequency	Rate <sup>†</sup>	Frequency	Rate	Frequency	Rate
San Francisco	5	31,003	164.3	23,054	122.1	9,032	47.9
Connecticut	8	30,138	176.0	20,912	122.1	9,357	54.7
Atlanta	5	16,345	142.9	12,975	113.4	4,787	41.9
Hawaii	5	9,231	166.5	5,920	106.8	1,841	33.2
Iowa	99	22,101	153.7	17,182	119.5	7,777	54.1
Detroit	3	29,867	155.9	24,295	126.8	11,144	58.2
New Mexico	33	9,697	123.5	8,190	104.3	3,324	42.4
Utah	29	9,610	128.3	7,964	106.3	2,963	39.5
Seattle	13	31,582	176.4	21,846	122.0	7,458	41.7
Total	200	189,574	155.9	142,338	119.5	57,683	42.4

<sup>†</sup>Median of county-year-age-race specific standardized crude rate (per 100,000 women).  
doi:10.1371/journal.pone.0035737.t001

**Table 2.** Model diagnostics and variance components of structured and unstructured spatial function in three breast cancer indicators.

	Early-stage incidence		Advanced-stage incidence		Mortality	
	VCM	REM	VCM	REM	VCM	REM
D(θ)	4203.80	4201.45	4200.53	4196.55	4201.14	4200.83
p <sub>d</sub>	216.34	222.74	210.89	213.09	211.87	212.61
DIC	4420.14	4424.19	4411.42	4409.64	4413.01	4413.44
σ <sub>s</sub> <sup>2</sup> (95% CI)	2.26 (0.76, 4.62)	3.96 (1.92, 6.29)	3.18 (1.25, 5.64)	1.62 (0.43, 3.86)	0.85 (0.22, 1.84)	2.16 (0.97, 3.94)
σ <sub>u</sub> <sup>2</sup> (95% CI)	0.56 (0.02, 1.02)	0.42 (0.003, 1.03)	0.43 (0.004, 0.94)	0.64 (0.09, 1.09)	0.78 (0.46, 1.11)	0.52 (0.14, 0.96)
p <sub>s(s+u)</sub>	0.80	0.90	0.88	0.72	0.52	0.81

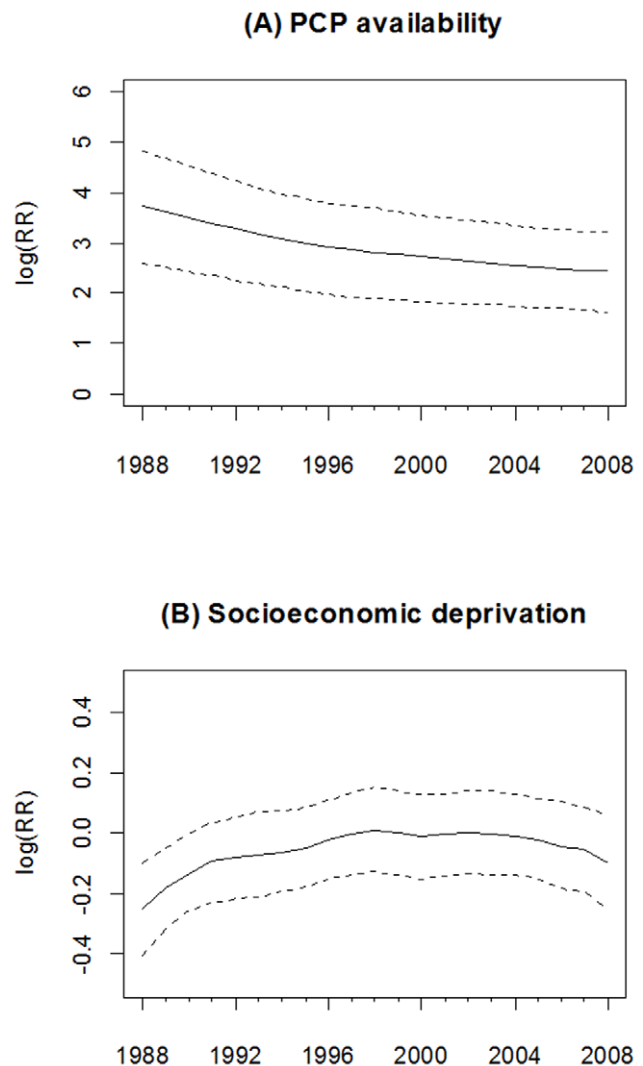
Abbreviation: VCM = varying-coefficient model; REM = random-effects model, D(θ) = posterior mean of the deviance; p<sub>d</sub> = effect number of parameters; σ<sub>s</sub><sup>2</sup> = structured spatial variance; σ<sub>u</sub><sup>2</sup> = unstructured spatial variance; p<sub>s(s+u)</sub> = proportion of the structured spatial variance in total spatial variance.  
doi:10.1371/journal.pone.0035737.t002

Assume  $p_{ct} = (p_{ct}^E, p_{ct}^A, p_{ct}^M)$  is the county-year-age-race adjusted rate for each breast cancer indicator using the 2000 U.S. standard population, respectively, where  $c \in (1, 2, \dots, 200)$  denotes the index of county,  $t \in (1, 2, \dots, 21)$  denotes the year from 1988 to 2008,  $E$  denotes early-stage incidence,  $A$  denotes advanced-stage incidence, and  $M$  denotes mortality. To implement the time-varying coefficient along with the adjustment of temporal autoregressive and spatial correlation, a VCM can be defined by:

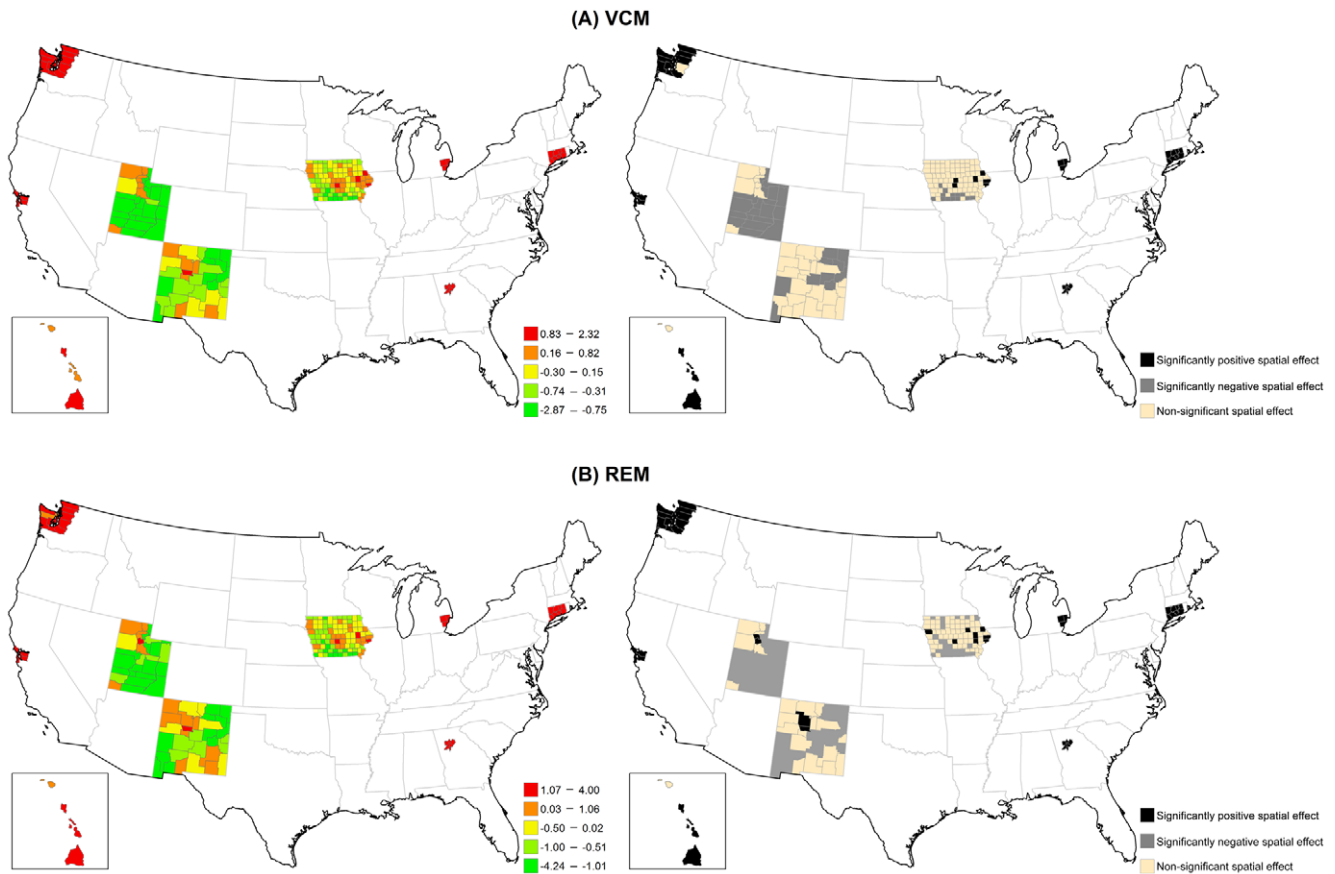
$$\log(p_{ct}) = \alpha + \beta_1 \times g_1(t) \times PCP_{ct} + \beta_2 \times g_2(t) \times SED_{ct} + f(t) + f_{spat}^u(c) + f_{spat}^s(c) \tag{1}$$

where  $\alpha$  is an intercept explained as an overall log relative risk for all counties, and  $g(t)$  is a second order random walk smoothness prior along with linear predictors. The parameters  $\beta_1$  and  $\beta_2$  denote temporal fixed effect vectors with dimension  $1 \times 21$  for the PCP availability variable ( $PCP_{ct}$ ) and the socioeconomic deprivation variable ( $SED_{ct}$ ), respectively. The function  $f(t)$  is a time smoother fitted by a penalized spline based on Bayesian P-spline priors [27]. Its functionality is mainly for controlling autoregressive correlations among our longitudinal data. In eq.(1), we used a second order random walk prior to ensure flexibility of the Gaussian errors and diffuse priors for the initial values of the time smoother.

To account for the heterogeneity due to spatial dependence, the spatial effect was decomposed into two terms: an unstructured spatial term  $f_{spat}^u(c)$  fitted by an exchangeable normal prior  $N(0, \sigma_u^2)$  and a structured spatial function  $f_{spat}^s(c)$  fitted by Markov random fields (MRF). The MRF assumed a conditional autoregressive prior [28] defined as  $c|c', c \neq c', \sigma^2 \sim N(\sum_{c' \in \omega_c} f_{spat}^s(c') / N_c, \sigma_c^2 / N_c)$ . The term  $N_c$  is the number of adjacent counties around county  $c$ , and  $c' \in \omega_c$  means that county  $c'$  is one of the neighboring counties  $\omega_c$  of county  $c$ . The two spatial components include a spatially correlated part (structured term) and a spatially uncorrelated part (unstructured term) to distinguish between two types of spatially unobserved covariates, namely, those covariates that examine a strong geographic heterogeneity and those covariates that are identified locally [28,29]. Two unknown variance components  $\sigma_u^2$  and  $\sigma_s^2$  were assigned an inverse Gamma hyper-prior with known hyper-parameters (a, b) = (0.001, 0.001). The intercept was assumed to have a flat prior [30]. This study mainly used the structured spatial



**Figure 1.** Time-varying estimated coefficient in the VCM for early-stage breast cancer incidence. (A) PCP availability. (B) Socioeconomic deprivation. The dash line is 95% credible interval.  
doi:10.1371/journal.pone.0035737.g001



**Figure 2. Maps for structured spatial function in the VCM and REM for early-stage breast cancer incidence.** (Left) Estimated structured spatial effect, where the range was categorized by 5-quantiles. (Right) 80% posterior probabilities, where black colour means significantly positive spatial effect, grey colour means significantly negative spatial effect, and tan colour means non-significantly spatial effect. doi:10.1371/journal.pone.0035737.g002

effect to show the impact of county location on breast cancer incidence and mortality. The statistical significance of the structured spatial effect relative to the background rate was determined by its 80% posterior probability, with results classified as a statistically significant positive spatial effect, a statistically significant negative spatial effect, or a statistically non-significant spatial effect.

The REM is the same as a generalized linear mixed model with only random effects, but the functionality of the structural additive models makes the spatial heterogeneity estimable along with the estimation of the random effects. It was defined as:

$$\log(p_{ct}) = \alpha + b_{1c} \times PCP_{ct} + b_{2c} \times SED_{ct} + f(t) + f_{spat}^u(c) + f_{spat}^s(c) \quad (2)$$

where two random effects,  $b_{1c}$  and  $b_{2c}$ , can be explained by the log relative risk for each increment of  $PCP_{ct}$  and  $SED_{ct}$  in a specific county  $c$ . The remaining assumptions of unknown parameters and functions are identical to those used in the VCM. To evaluate the change in the breast cancer indicators attributed to PCP availability and to socioeconomic deprivation, a REM without  $PCP_{ct}$ , a REM without  $SED_{ct}$  and a REM without both  $PCP_{ct}$  and  $SED_{ct}$  were fitted to compare the results generated from eq.(2), respectively.

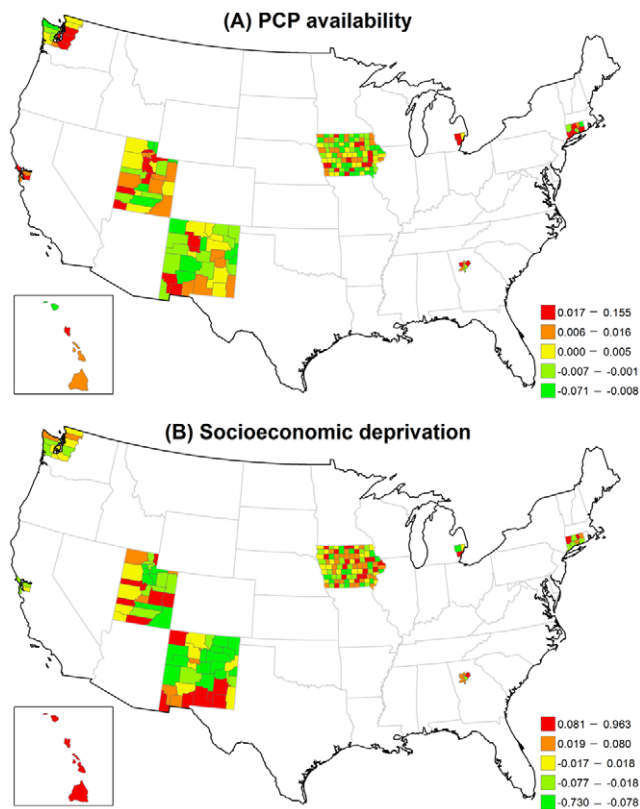
All models were fitted using a fully Bayesian influence approach using Markov Chain Monte Carlo techniques, which is carried out by randomly drawing from the full conditional distributions of

blocks of parameters conditional on the rest of parameters and the data [29]. More details can be found in Brezger’s and Lang’s methodological paper [31]. Briefly, for each model, 22,000 iterations were carried out, with the first 2,000 samples used as burn in. We stored every 20th sample from the remaining 20,000 samples, giving a final sample of 1,000 for estimating the model parameters. The significance of the estimates for  $PCP_{ct}$  and  $SED_{ct}$  was determined by their 95% CIs. Model diagnostics used the deviance information criterion (DIC) is based on the sum of the posterior mean of the deviance and the effective number of parameters [32]. Maps of the county-level structured spatial function and county-level random effects in VCM and REM displayed the geographic distribution of breast cancer incidence and mortality. The data analysis was implemented by the BayesX 2.01 software package [33].

## Results

### Demographics

From 1988 to 2008, 189,574 women were diagnosed with early-stage breast cancers, 142,338 women were diagnosed with advanced-stage breast cancer, and 57,683 women died of breast cancer (Table 1). The crude rates per 100,000 population of early-stage incidence ranged from 123.5 in New Mexico to 176.4 in Seattle. New Mexico also had the lowest crude rate of advanced-stage incidence with 104.3 per 100,000 population and Detroit had the highest crude rate of advanced-stage incidence and



**Figure 3. Maps for estimated county-level random effects in the REM for early-stage breast cancer incidence.** (A) PCP availability. (B) Socioeconomic deprivation. doi:10.1371/journal.pone.0035737.g003

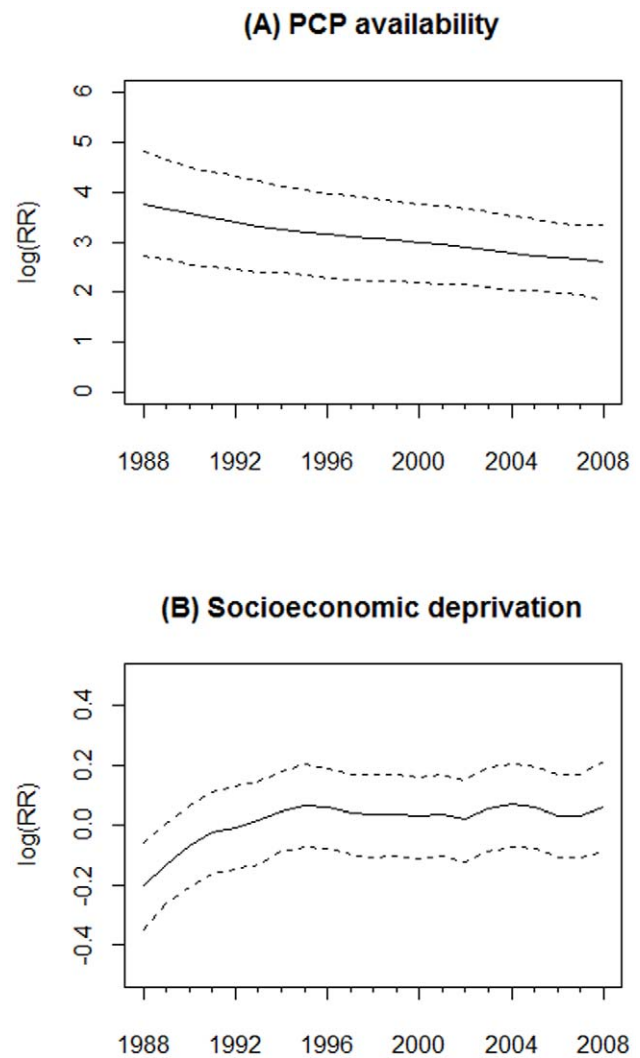
mortality with 126.8 and 58.2 per 100,000 population, respectively. The lowest crude mortality rate was found in Hawaii with 33.2 per 100,000 population.

#### Model diagnostics and spatial variances

Table 2 shows that the two types of models had similar DIC values for the three breast cancer indicators, suggesting that both models fit equally well. Variance components show that for the REM the structured spatial component ( $\sigma_s^2$ ) had a larger variance than unstructured spatial component ( $\sigma_u^2$ ) for each breast cancer indicator, suggesting that the spatial heterogeneity played a more dominant role than the random spatial intercepts. The structured spatial variance also was larger than the unstructured spatial variance in the VCM for early-stage and advanced-stage incidence.

#### Early-stage breast cancer incidence

The association (estimated as the log relative risk [logRR]) of PCP availability with early-stage breast cancer incidence declined over time from 3.72 (95% CI = 2.59, 4.81) in 1988 to 2.45 (95% CI = 1.63, 3.22) in 2008, see Figure 1(A). Thus, the lower bound of the 95% CI for each logRR of PCP availability was above zero, suggesting that during this study period higher PCP availability was associated with higher early-stage breast cancer incidence. However, the magnitude of this association declined 34.1% [(3.72–2.45)/3.72] during the 21 year study period. Significant associations between socioeconomic deprivation and early-stage incidence were observed only from 1988 to 1990, where the



**Figure 4. Time-varying estimated coefficient in the VCM for advanced-stage breast cancer incidence.** (A) PCP availability. (B) Socioeconomic deprivation. The dash line is 95% credible interval. doi:10.1371/journal.pone.0035737.g004

logRR gradually increased from  $-0.25$  (95% CI =  $-0.41, -0.10$ ) in 1988 to  $-0.13$  (95% CI =  $-0.26, -0.001$ ) in 1990, see Figure 1(B).

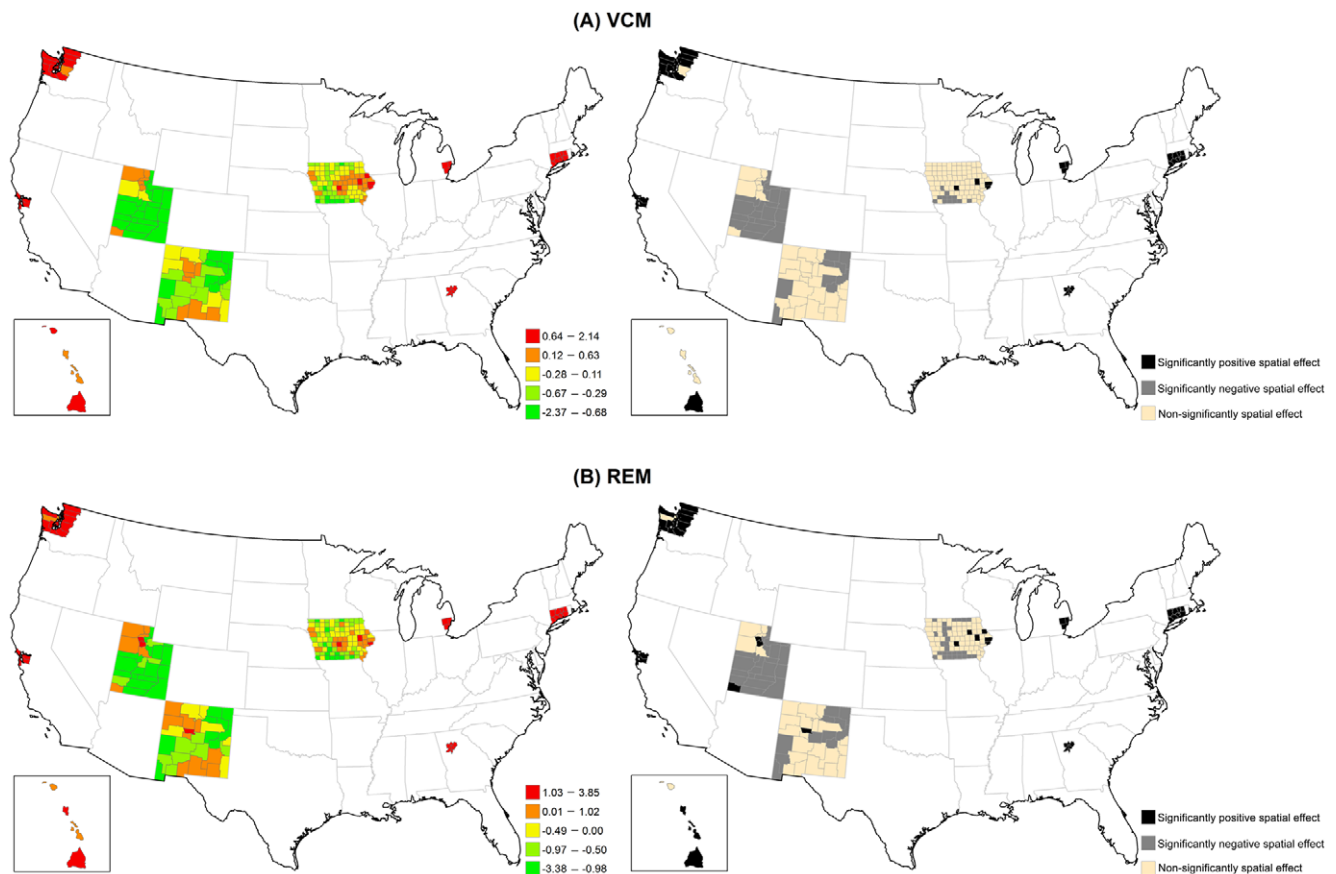
Figure 2 displays the structured spatial variability in early-stage incidence across 200 counties for the VCM and REM approaches. Significantly positive spatial effects, determined by 80% posterior probability of  $\log\text{RR} > 0$ , was present in 41 counties in the VCM and 48 counties in the REM, mostly in metropolitan SEER areas. This finding suggests that at least 20% of counties had significantly elevated early-stage incidence due to their locations after controlling for county-specific PCP availability and socioeconomic deprivation in either model. Figures 3(A) and 3(B) display the county-specific associations of PCP availability and socioeconomic deprivation with early-stage incidence estimated by the REM for all 200 counties. The association of both determinants with early-stage incidence varied by county, where the variances of random effects were 0.13 (95% CI = 0.002, 0.94) for PCP availability and 0.18 (95% CI = 0.06, 0.35) for socioeconomic deprivation.

The county-level influence of PCP availability and socioeconomic deprivation varied across counties in different SEER areas

**Table 3.** Geographic disparity of county-specific relative risk of PCP availability and socioeconomic deprivation on three breast cancer indicators by SEER areas, presented by RR.

Early-stage incidence							
Area	N <sup>†</sup>	PCP availability			Socioeconomic deprivation		
		Range	Mean	Variance	Range	Mean	Variance
San Francisco	5	1.01–1.08	1.03	0.0008	0.90–1.00	0.96	0.0014
Connecticut	8	0.98–1.06	1.02	0.0006	0.95–1.13	1.02	0.0050
Atlanta	5	0.99–1.08	1.02	0.0013	0.95–1.23	1.08	0.0104
Hawaii	5	0.99–1.15	1.04	0.0042	0.82–1.35	1.14	0.0380
Iowa	99	0.98–1.05	1.00	0.0002	0.80–1.27	1.01	0.0083
Detroit	3	1.00–1.03	1.02	0.0003	0.92–1.13	1.02	0.0110
New Mexico	33	0.93–1.09	1.00	0.0005	0.48–2.62	0.96	0.1191
Utah	29	0.97–1.17	1.01	0.0012	0.71–1.81	1.01	0.0435
Seattle	13	0.99–1.05	1.01	0.0004	0.93–1.20	1.01	0.0044
Advanced-stage incidence							
Area	N	PCP availability			Socioeconomic deprivation		
		Range	Mean	Variance	Range	Mean	Variance
San Francisco	5	1.13–1.54	1.24	0.0309	0.99–1.01	1.00	0.0002
Connecticut	8	0.96–1.48	1.10	0.0323	0.98–1.03	1.00	0.0004
Atlanta	5	0.96–1.70	1.27	0.0716	1.01–1.07	1.03	0.0005
Hawaii	5	0.98–2.50	1.35	0.4201	0.90–1.07	1.02	0.0046
Iowa	99	0.92–1.58	1.02	0.0060	0.92–1.11	1.00	0.0007
Detroit	3	1.03–1.37	1.24	0.0337	0.98–1.04	1.01	0.0007
New Mexico	33	0.91–2.14	1.04	0.0407	0.84–1.17	0.99	0.0046
Utah	29	0.95–3.29	1.15	0.2000	0.90–1.08	1.00	0.0016
Seattle	13	0.95–1.46	1.15	0.0274	0.95–1.06	1.00	0.0007
Mortality							
Area	N	PCP availability			Socioeconomic deprivation		
		Range	Mean	Variance	Range	Mean	Variance
San Francisco	5	1.66–3.07	2.24	0.4232	0.98–1.00	0.98	0.0001
Connecticut	8	0.71–3.54	1.63	1.1179	0.96–1.06	1.01	0.0012
Atlanta	5	1.05–3.98	2.59	1.1458	1.02–1.11	1.06	0.0015
Hawaii	5	0.88–11.66	3.46	21.2464	0.69–1.13	1.01	0.0314
Iowa	99	0.82–8.63	1.14	0.6398	0.77–1.22	1.01	0.0037
Detroit	3	2.06–3.11	2.43	0.3451	0.96–1.05	1.00	0.0024
New Mexico	33	0.85–18.03	1.61	8.7430	0.77–1.22	0.98	0.0126
Utah	29	0.85–22.60	2.25	18.3064	0.79–1.25	0.99	0.0094
Seattle	13	0.80–3.96	1.65	0.8257	0.93–1.23	1.01	0.0060

<sup>†</sup>N = number of counties; PCP = primary care physicians.  
doi:10.1371/journal.pone.0035737.t003



**Figure 5. Maps for structured spatial function in the VCM and REM for advanced-stage breast cancer incidence.** (Left) Estimated structured spatial effect, where the range was categorized by 5-quantiles. (Right) 80% posterior probabilities, where black colour means significantly positive spatial effect, grey colour means significantly negative spatial effect, and tan colour means non-significantly spatial effect. doi:10.1371/journal.pone.0035737.g005

(Table 3). Larger variances suggest large geographic disparity for the county-specific association between each of the two risk factors and early-stage breast cancer incidence. The association between PCP availability and early-stage breast cancer incidence varied the most across the five counties in Hawaii (variance = 0.0042) and least across the 99 counties in Iowa (variance = 0.0002). Across all counties, the RR ranged from a low of 0.93 to a high of 1.17. In contrast, the association between socioeconomic deprivation and early-stage breast cancer incidence varied the most across the 33 counties in New Mexico (variance = 0.1191) and the least across the 5 counties in the San Francisco area (variance = 0.0014). In one New Mexico county, increasing socioeconomic deprivation was strongly associated with a lower incidence of early-stage breast cancer (RR = 0.48) while in another New Mexico county increasing socioeconomic deprivation increased the early-stage breast cancer incidence (RR = 2.62).

#### Advanced-stage breast cancer incidence

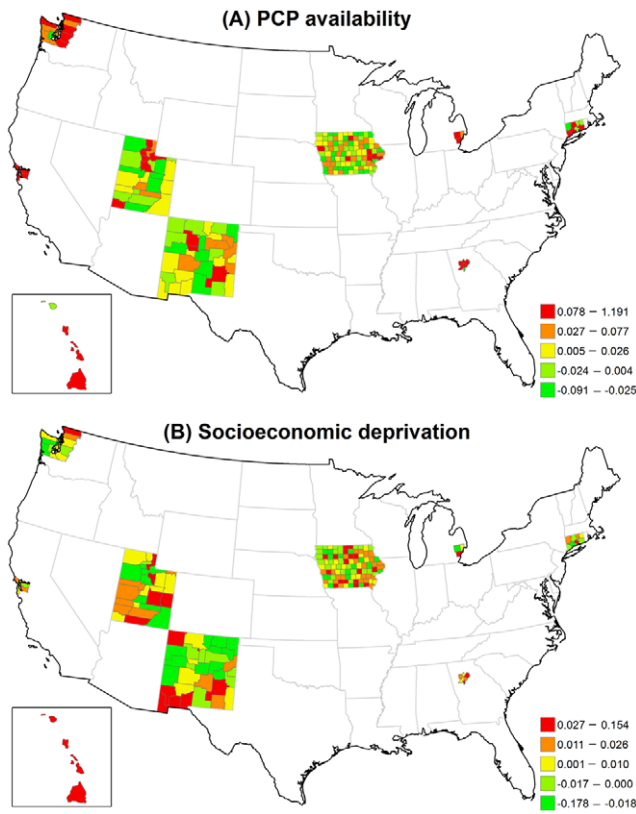
Figure 4(A) shows a strong association between PCP availability and advanced-stage incidence over time since the 95% CI of the time-varying logRR excluded zero in each year. The association declined slightly from 1988 to 2008. Figure 4(B) shows that the socioeconomic deprivation and advanced-stage incidence were only statistically associated in 1988 (logRR = -0.20; 95% CI = -0.35, -0.06), but not after 1988.

Figure 5 illustrates that the structured spatial effect in advanced-stage breast cancer incidence varied across the counties based on the VCM and REM. Among 200 counties, 37 counties in the VCM and 45 counties in the REM had significantly positive spatial estimates. Most of these counties were located in metropolitan SEER areas. Figure 6 indicates that the county-specific logRR varied across counties, where the variances of random effects were 1.22 (95% CI = 0.002, 6.81) for PCP availability and 0.04 (95% CI = 0.001, 0.14) for socioeconomic deprivation.

Table 3 shows that the variance of the association of PCP availability with advanced-stage breast cancer incidence across the counties for each of the SEER areas was generally larger than the variance of the association of socioeconomic deprivation with advanced-stage breast cancer incidence. Hawaii and Utah had the largest variances, indicating that the association between PCP availability and advanced-stage incidence varied the most across counties in these two areas.

#### Breast cancer mortality

As shown in Figure 7(A), PCP availability had a consistently positive and significant association with breast cancer mortality from 1988 to 2008. The logRR of PCP availability declined from 4.35 (95% CI = 3.08, 5.58) in 1988 to 3.08 (95% CI = 2.16, 3.94) in 2008. As shown in Figure 7(B), only during 1988–1992 was socioeconomic deprivation significantly associated with breast



**Figure 6. Maps for estimated county-level random effects in the REM for advanced-stage breast cancer incidence.** (A) PCP availability. (B) Socioeconomic deprivation. doi:10.1371/journal.pone.0035737.g006

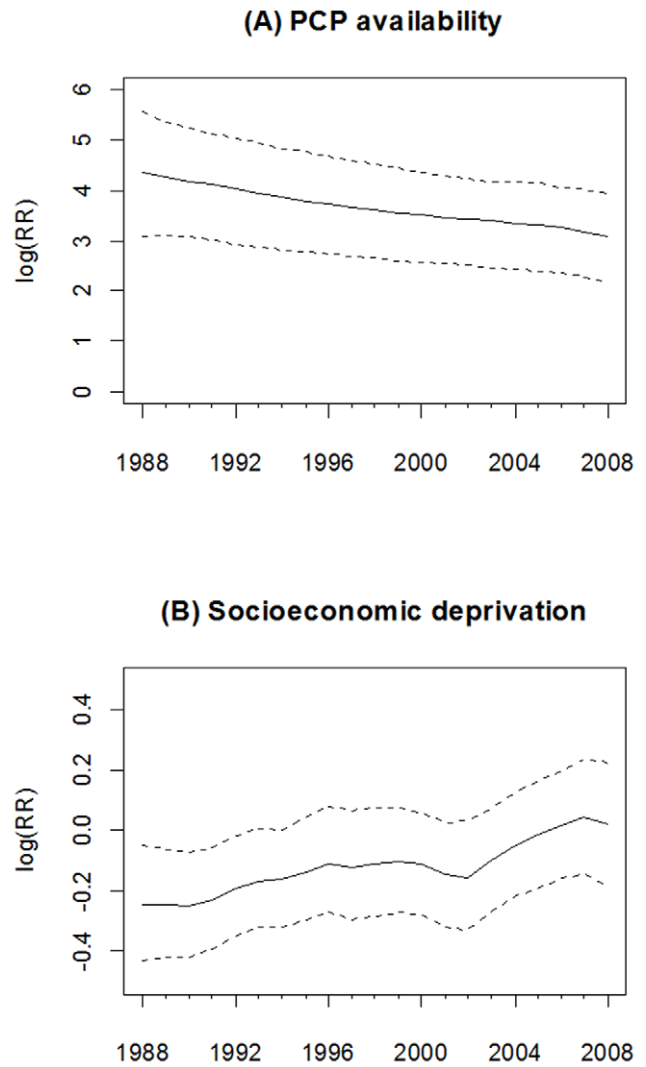
cancer mortality, whereby counties with higher socioeconomic deprivation had lower logRR of breast cancer mortality.

Figure 8 shows the large structured geographic variability in breast cancer mortality across the 200 SEER counties in the VCM and REM, especially in metropolitan SEER areas. Of the 2000 SEER counties, 34 counties in the VCM (17.0%) and 39 counties in the REM (19.5%) had at least an 80% posterior probability of increased breast cancer mortality ( $\log RR > 0$ ). Figure 9 shows that county-specific effects of PCP availability and socioeconomic deprivation varied across counties based on the REM, where the estimated variances of the random effects were 5.76 (95% CI = 0.01, 22.00) for PCP availability and 0.10 (95% CI = 0.004, 0.32) for socioeconomic deprivation.

The county-specific association of PCP availability with the mortality rate showed greater variability than the county-specific association of socioeconomic deprivation with the mortality rate in each SEER area (Table 3). The largest variance of the association between PCP availability and the mortality rate was in Hawaii, although the variability in this association was also large across counties in New Mexico and Utah. For many counties, increasing PCP availability was associated with an increasing mortality rate.

**Discussion**

The purpose of this study was to examine the association and geographic disparity of PCP availability and socioeconomic deprivation over time with three breast cancer indicators using spatio-temporal analysis with structural additive models of county-

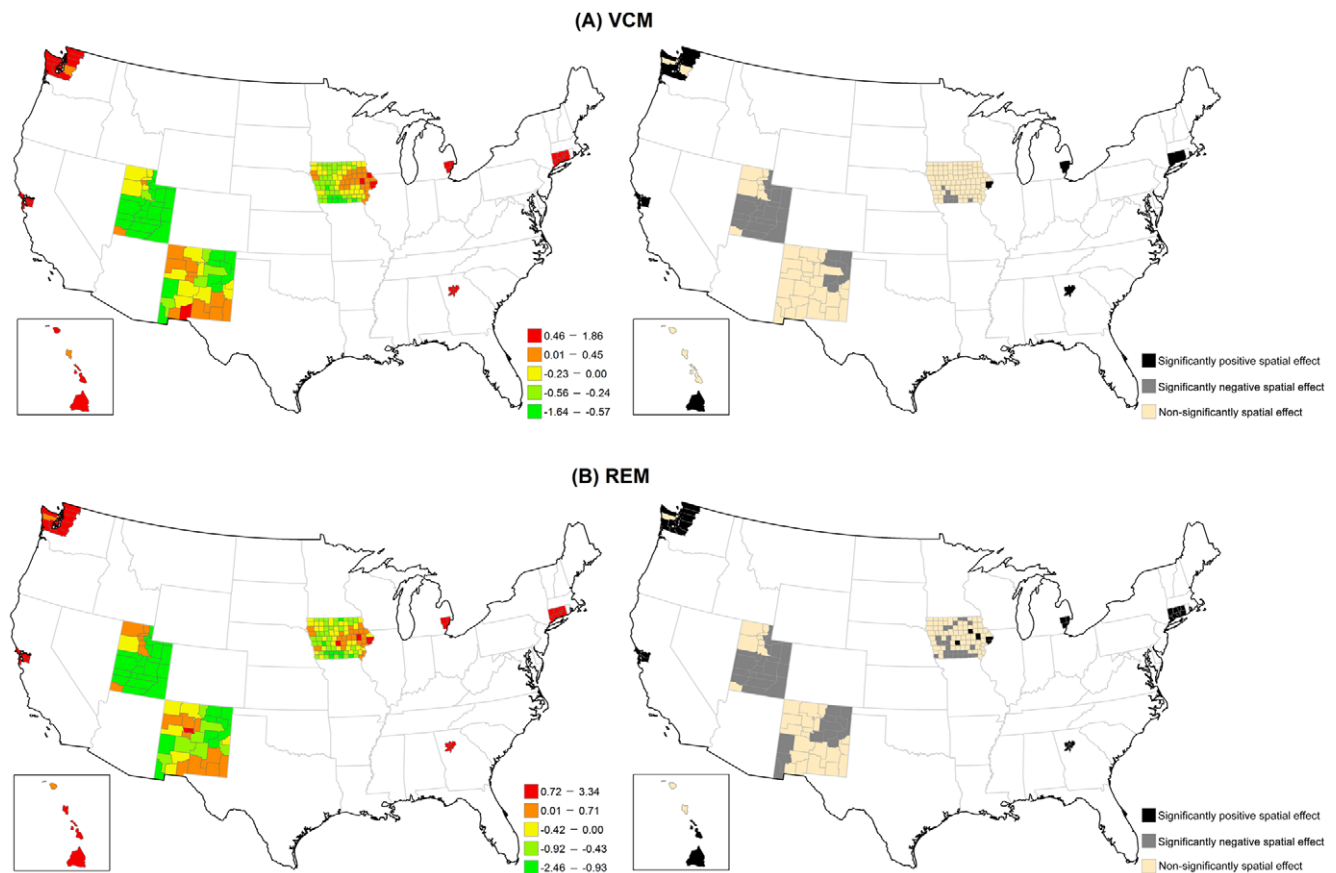


**Figure 7. Time-varying estimated coefficient in the VCM for breast cancer mortality.** (A) PCP availability. (B) Socioeconomic deprivation. The dash line is 95% credible interval. doi:10.1371/journal.pone.0035737.g007

level SEER data from 1988–2008. Our study showed two main findings. First, increasing PCP availability was significantly associated with increasing early-stage breast cancer incidence, advanced-stage incidence, and mortality over the entire study period, but socioeconomic deprivation was only significantly associated with the three breast cancer indicators during the early years of the study period. Second, large geographic disparities across the SEER counties were observed in the associations of PCP availability and socioeconomic deprivation with each of the three breast cancer indicators.

As described, PCP availability increased the likelihood of early-stage breast cancer incidence, but the association declined over time. A likely explanation is the increased prevalence of mammography service and use since the late 1980s. This result is consistent with a previous study of the benefit of screening mammography on early-stage breast cancer diagnoses, which found overall age-adjusted breast cancer incidence rates increased 25% from the early 1980s to 1993, and then dropped by 18% in 2004 [34]. A positive relationship between PCP availability and





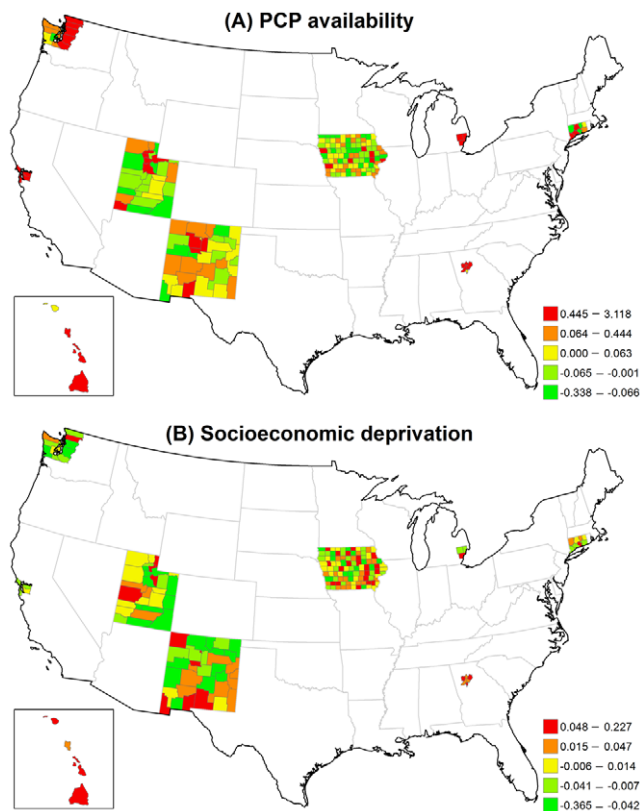
**Figure 8. Maps for structured spatial function in the VCM and REM for breast cancer mortality.** (Left) Estimated structured spatial effect, where the range was categorized by 5-quantiles. (Right) 80% posterior probabilities, where black colour means significantly positive spatial effect, grey colour means significantly negative spatial effect, and tan colour means non-significantly spatial effect. doi:10.1371/journal.pone.0035737.g008

early-stage breast cancer incidence also has been reported in other studies [18,35], and we further illustrated its change over time in Figure 1. Moreover, we also found a positive association of PCP availability with breast cancer mortality over time. Although some studies showed that higher PCP availability was associated with lower mortality for some health conditions [36–38], we observed a positive association, which might have been the result of confounding by rurality, whereby counties considered to be more urban had higher PCP availability and higher mortality (see Figure 8). The time-varying socioeconomic deprivation was significantly negatively associated with early-stage incidence from 1988 to 1990 in our study. Higher socioeconomic deprivation may have led to lower screening mammography use resulting in lower early-stage breast cancer rates [39]. Targeted efforts nationally to increase screening among women living in areas with high socioeconomic deprivation might very well account for the lack of significant associations between socioeconomic deprivation and early-stage incidence after 1990.

Our second finding showed large geographic disparities across the SEER counties in the association of PCP availability and socioeconomic deprivation with each breast cancer indicator; in some counties there were positive associations and in other counties there were negative associations. The geographic disparity of PCP availability can be explained by Medicare beneficiaries only residing in some counties with higher levels of

PCP availability, which have fewer preventable hospitalizations and lower death rates [40]. The posterior probability of the structured spatial effect in the VCM and REM identified specific counties where significant associations between each of PCP availability and socioeconomic deprivation and all three breast cancer indicators were observed (Figures 2, 5 & 8). The positive associations between each of PCP availability and socioeconomic deprivation and the two early- and advanced-stage breast cancer incidence indicators were significant for at least 20% of the 200 SEER counties, but the associations between each of PCP availability and socioeconomic deprivation and breast cancer mortality was significant for less than 20% of these SEER counties. This finding suggests that the spatial function could identify more significantly elevated incidence than mortality for breast cancer in these 200 SEER counties. The observed significance of spatial effects in the study areas confirms that spatial heterogeneity should not be ignored, and was most pronounced in metropolitan SEER areas. More importantly, these results can be used to target breast cancer detection programs or prevention and control activities to counties with elevated breast cancer incidence and mortality rates and showed the importance of the local influence of PCP availability and socioeconomic deprivation on breast cancer indicators.

A major strength of our study was the sophistication of the statistical modeling strategy. The STAR model goes beyond



**Figure 9. Maps for estimated county-level random effects in the REM for breast cancer mortality.** (A) PCP availability. (B) Socioeconomic deprivation.

doi:10.1371/journal.pone.0035737.g009

previously used methods because it provides flexible functions to perform the time- and space-varying influence of determinants on the breast cancer indicators of interest. This modeling approach

## References

- DeSantis C, Siegel R, Bandi P, Jemal A (2011) Breast cancer statistics, 2011. *CA Cancer J Clin* 61: 409–418.
- Jemal A, Ward E, Thun MJ (2007) Recent trends in breast cancer incidence rates by age and tumor characteristics among U.S. women. *Breast Cancer Res* 9: 28.
- Gramling R, Eaton CB, Rothman KJ, Cabral H, Silliman RA, et al. (2009) Hormone replacement therapy, family history, and breast cancer risk among postmenopausal women. *Epidemiol* 20: 752–756.
- Saenz R (2009) Trends in Breast Cancer Mortality in the United States. Available: <http://www.prb.org/Articles/2009/breastcancer.aspx>. Accessed Dec 2009.
- DeSantis C, Jemal A, Ward E, Thun MJ (2008) Temporal trends in breast cancer mortality by state and race. *Cancer Causes Control* 19: 537–545.
- Laden F, Spiegelman D, Neas LM, Colditz GA, Hankinson SE, et al. (1997) Geographic variation in breast cancer incidence rates in a cohort of U.S. women. *J Natl Cancer Inst* 89: 1373–1378.
- Goodwin JS, Freeman JL, Freeman D, Nattinger AB (1998) Geographic variations in breast cancer mortality: do higher rates imply elevated incidence or poorer survival? *Am J Public Health* 88: 458–460.
- Merkin SS, Stevenson L, Powe N (2002) Geographic socioeconomic status, race, and advanced-stage breast cancer in New York City. *Am J Public Health* 92: 64–70.
- Joseph Sheehan T, DeChello LM, Kulldorff M, Gregorio DI, Gershman S, et al. (2004) The geographic distribution of breast cancer incidence in Massachusetts 1988 to 1997, adjusted for covariates. *Int J Health Geogr* 3: 17.
- Vieira VM, Webster TF, Weinberg JM, Aschengrau A (2008) Spatial-temporal analysis of breast cancer in upper Cape Cod, Massachusetts. *Int J Health Geogr* 7: 46.
- Meissner HI, Klabunde CN, Han PK, Benard VB, Breen N (2011) Breast cancer screening beliefs, recommendations and practices: Primary care physicians in the united states. *Cancer* 117: 3101–3111.
- González P, Borrayo EA (2011) The Role of Physician Involvement in Latinas' Mammography Screening Adherence. *Women's Health Issues* 21: 165–170.
- Price M, Butow P, Charles M, Bullen T, Meiser B, et al. (2010) Predictors of breast cancer screening behavior in women with a strong family history of the disease. *Breast Cancer Res Treat* 124: 509–519.
- Yankaskas BC, Dickens P, Bowling JM, Jarman MP, Luken K, et al. (2010) Barriers to adherence to screening mammography among women with disabilities. *Am J Public Health* 100: 947–953.
- Lopez ED, Khoury AJ, Dailey AB, Hall AG, Chisholm LR (2009) Screening mammography: a cross-sectional study to compare characteristics of women aged 40 and older from the deep South who are current, overdue, and never screeners. *Women's health issues* 19: 434–445.
- Cui Y, Peterson NB, Hargreaves M, Wen W, Patel K, et al. (2007) Mammography use in the Southern Community Cohort Study (United States). *J Health Care Poor Underserved* 18: 102–117.
- Shi L, Starfield B (2001) The effect of primary care physician supply and income inequality on mortality among blacks and whites in US metropolitan areas. *Am J Public Health* 91: 1246–1250.
- Ferrante JM, Gonzalez EC, Pal N, Roetzheim RG (2000) Effects of physician supply on early detection of breast cancer. *J Am Board Fam Med* 13: 408–414.
- Baade PD, Turrell G, Aitken JF (2011) Geographic remoteness, area-level socioeconomic disadvantage and advanced breast cancer: a cross-sectional, multilevel study. *J Epidemiol Community Health* 65(11): 1037–1043.
- Gorey KM, Luginaah IN, Hamm C, Balagurusamy M, Holowaty EJ (2011) The supply of physicians and care for breast cancer in Ontario and California, 1998 to 2006. *Can J Rural Med* 16: 47–54.
- Schootman M, Lian M, Deshpande AD, Baker EA, Pruitt SL, et al. (2010) Temporal trends in area socioeconomic disparities in breast-cancer incidence and mortality, 1988–2005. *Breast Cancer Res Treat* 122: 533–543.
- Singh G (2003) Area deprivation and widening inequalities in US mortality, 1969–1998. *Am J Public Health* 93: 1137–1143.

could be used in future investigation of spatio-temporal variations in risk factors for other health conditions. In addition, the STAR model takes into account data from neighboring counties, so our results are less affected by small numbers than traditional frequentist approaches.

Our study also included two limitations. First, our results may be affected by scattered areas with a lack of neighboring counties in metropolitan SEER areas, such as Atlanta, Detroit, Seattle, San Francisco, and Connecticut. Ignoring these neighboring counties that were not part of the SEER program data may have affected the results of models. The influence of the neighboring counties on counties near the outside boundary of each SEER area may have been underestimated because those neighboring counties were ignored. Second, the STAR model does not support the implementation of space-time interaction, which resulted in our inability to examine geographic variation over time, but this was not a purpose of our study.

To sum up, this study showed important influences of PCP availability and socioeconomic deprivation on three breast cancer indicators in both temporal trends and geographic disparities. The time-varying association of PCP availability was stronger than that of socioeconomic deprivation. The SEER area-specific PCP availability also displayed larger geographic disparities than socioeconomic deprivation, especially in advanced-stage incidence and mortality.

## Acknowledgments

We thank the Alvin J. Siteman Cancer Center at Barnes-Jewish Hospital and Washington University School of Medicine in St. Louis, Missouri, for use of the Health Behavior, Communication, and Outreach Core. We also appreciate Dr. Thomas Kneib, who provided methodological and technical supports when we were developing our models.

## Author Contributions

Conceived and designed the experiments: LCC MS. Analyzed the data: LCC. Wrote the paper: LCC ADD DBJ MS.

23. Diez-Roux AV, Kiefe CI, Jacobs DR, Jr., Haan M, Jackson SA, et al. (2001) Area characteristics and individual-level socioeconomic position indicators in three population-based epidemiologic studies. *Ann Epidemiol* 11: 395–405.
24. Messer LC, Laraia BA, Kaufman JS, Eyster J, Holzman C, et al. (2006) The development of a standardized neighborhood deprivation index. *J Urban Health* 83: 1041–1062.
25. Krieger N, Chen J, Waterman P, Soobader M, Subramanian S, et al. (2002) Geocoding and monitoring of socioeconomic inequalities in mortality and cancer incidence: Does the choice of area-based measure and geographic level matter? *American Journal of Epidemiol* 156: 471–482.
26. Brezger A, Kneib T, Lang S (2005) BayesX: Analysing Bayesian structured additive regression models. *J Stat Software* 14(11).
27. Lang S, Brezger A (2004) Bayesian P-Splines. *J Compu Graph Stat* 13: 183–212.
28. Besag J, York J, Mollié A (1991) Bayesian image restoration, with two applications in spatial statistics. *Ann Inst Stat Math* 43: 1–20.
29. Fahrmeir L, Lang S (2001) Bayesian Inference for Generalized Additive Mixed Models Based on Markov Random Field Priors. *J R Stat Soc Ser C Appl Stat* 50: 201–220.
30. Kazembe LN, Appleton CC, Kleinschmidt I (2007) Geographical disparities in core population coverage indicators for roll back malaria in Malawi. *Int J Equity Health* 6: 5.
31. Brezger A, Lang S (2006) Generalized structured additive regression based on Bayesian P-splines. *Comput Stat Data Anal* 50: 967–991.
32. Spiegelhalter DJ, Best NG, Carlin BP, Van Der Linde A (2002) Bayesian measures of model complexity and fit. *J R Stat Soc Series B Stat Methodol* 64: 583–639.
33. Belitz C, Brezger A, Kneib T, Lang S (2009) BayesX - Software for Bayesian inference in structured additive regression models. Version 2.01.
34. Glass AG, Lacey JV, Jr., Carreon JD, Hoover RN (2007) Breast cancer incidence, 1980–2006: combined roles of menopausal hormone therapy, screening mammography, and estrogen receptor status. *J Natl Cancer Inst* 99: 1152–1161.
35. Ballard-Barbash R, Potosky AL, Harlan LC, Nayfield SG, Kessler LG (1996) Factors associated with surgical and radiation therapy for early stage breast cancer in older women. *J Natl Cancer Inst* 88: 716–726.
36. Shi L, Starfield B, Politzer R, Regan J (2002) Primary care, self-rated health, and reductions in social disparities in health. *Health Serv Res* 37: 529–550.
37. Macinko J, Starfield B, Shi L (2007) Quantifying the health benefits of primary care physician supply in the United States. *Int J Health Serv* 37: 111–126.
38. Shi L, Macinko J, Starfield B, Politzer R, Xu J (2005) Primary care, race, and mortality in US states. *Soc Sci Med* 61: 65–75.
39. Vona-Davis L, Rose DP (2009) The influence of socioeconomic disparities on breast cancer tumor biology and prognosis: a review. *J Women's Health* 18: 883–893.
40. Chang C-H, Stukel TA, Flood AB, Goodman DC (2011) Primary Care Physician Workforce and Medicare Beneficiaries' Health Outcomes. *J Am Med Assoc* 305: 2096–2104.