

Colorectal and Other Cancer Risks for Carriers and Noncarriers From Families With a DNA Mismatch Repair Gene Mutation: A Prospective Cohort Study

Aung Ko Win, Joanne P. Young, Noralane M. Lindor, Katherine M. Tucker, Dennis J. Ahnen, Graeme P. Young, Daniel D. Buchanan, Mark Clendenning, Graham G. Giles, Ingrid Winship, Finlay A. Macrae, Jack Goldblatt, Melissa C. Southey, Julie Arnold, Stephen N. Thibodeau, Shanaka R. Gunawardena, Bharati Bapat, John A. Baron, Graham Casey, Steven Gallinger, Loïc Le Marchand, Polly A. Newcomb, Robert W. Haile, John L. Hopper, and Mark A. Jenkins

Author affiliations appear at the end of this article.

Submitted September 25, 2011; accepted November 22, 2011; published online ahead of print at www.jco.org on February 13, 2012.

The content of this article does not necessarily reflect the views or policies of the National Cancer Institute or any of the collaborating centers in the Cancer Family Registries (CFRs); in addition, mention of trade names, commercial products, or organizations does not imply endorsement by the US Government or the CFR. Authors had full responsibility for the design of the study, the collection of the data, the analysis and interpretation of the data, the decision to submit the manuscript for publication, and the writing of the article.

Authors' disclosures of potential conflicts of interest and author contributions are found at the end of this article.

Corresponding author: Mark A. Jenkins, PhD, Centre for Molecular, Environmental, Genetic and Analytic Epidemiology, Melbourne School of Population Health, 207 Bouverie St, Level 3, The University of Melbourne, Victoria 3010, Australia; e-mail: m.jenkins@unimelb.edu.au.

© 2012 by American Society of Clinical Oncology

0732-183X/12/3009-958/\$20.00

DOI: 10.1200/JCO.2011.39.5590

ABSTRACT

Purpose

To determine whether cancer risks for carriers and noncarriers from families with a mismatch repair (MMR) gene mutation are increased above the risks of the general population.

Patients and Methods

We prospectively followed a cohort of 446 unaffected carriers of an MMR gene mutation (*MLH1*, $n = 161$; *MSH2*, $n = 222$; *MSH6*, $n = 47$; and *PMS2*, $n = 16$) and 1,029 their unaffected relatives who did not carry a mutation every 5 years at recruitment centers of the Colon Cancer Family Registry. For comparison of cancer risk with the general population, we estimated country-, age-, and sex-specific standardized incidence ratios (SIRs) of cancer for carriers and noncarriers.

Results

Over a median follow-up of 5 years, mutation carriers had an increased risk of colorectal cancer (CRC; SIR, 20.48; 95% CI, 11.71 to 33.27; $P < .001$), endometrial cancer (SIR, 30.62; 95% CI, 11.24 to 66.64; $P < .001$), ovarian cancer (SIR, 18.81; 95% CI, 3.88 to 54.95; $P < .001$), renal cancer (SIR, 11.22; 95% CI, 2.31 to 32.79; $P < .001$), pancreatic cancer (SIR, 10.68; 95% CI, 2.68 to 47.70; $P = .001$), gastric cancer (SIR, 9.78; 95% CI, 1.18 to 35.30; $P = .009$), urinary bladder cancer (SIR, 9.51; 95% CI, 1.15 to 34.37; $P = .009$), and female breast cancer (SIR, 3.95; 95% CI, 1.59 to 8.13; $P = .001$). We found no evidence of their noncarrier relatives having an increased risk of any cancer, including CRC (SIR, 1.02; 95% CI, 0.33 to 2.39; $P = .97$).

Conclusion

We confirmed that carriers of an MMR gene mutation were at increased risk of a wide variety of cancers, including some cancers not previously recognized as being a result of MMR mutations, and found no evidence of an increased risk of cancer for their noncarrier relatives.

J Clin Oncol 30:958-964. © 2012 by American Society of Clinical Oncology

INTRODUCTION

Lynch syndrome is an autosomal dominant inherited disorder of cancer susceptibility caused by germline mutations in the DNA mismatch repair (MMR) genes *MLH1*, *MSH2*, *MSH6*, and *PMS2*. Estimates of carrier frequency of germline mutations of these genes in the population range widely depending on various assumptions, from approximately one in 3,010 individuals (for *MLH1* and *MSH2* combined¹) to one in 360 individuals (for all four MMR genes combined²). Mutation carriers are at substantially increased risk of cancers of the colon, rectum, endometrium, stomach, ovary, ureter, renal pelvis, brain, small bowel, and hepatobiliary tract,

and the diagnoses of these cancers generally occur at younger ages than for the general population.³ Estimates of site-specific cancer risks for MMR gene mutation carriers inform optimal clinical management. Screening colonoscopy,^{4,5} prophylactic hysterectomy, and bilateral salpingo-oophorectomy⁶ have the potential to decrease the risk of colorectal cancer (CRC), endometrial cancer (EC), and ovarian cancer, respectively, for MMR gene mutation carriers. All studies estimating the risk of cancer for MMR gene mutation carriers have been retrospective and, therefore, may be biased as a result of differential recall of family history of cancer and failure to adjust for ascertainment of subjects recruited because of a family history of cancer.⁷ Risk estimates

using prospective data of mutation carriers with no prior diagnosis of cancer will not be biased but are challenging because they require long-term follow-up to provide sufficient time for cancers to be diagnosed.

Genetic testing of family members of a mutation carrier will identify relatives who have and who have not inherited the family-specific MMR gene mutation. It is not known whether the cancer risk for noncarriers from families with MMR gene mutations is greater than that of the general population. A family history of CRC increases an individual's risk 1.5- to eight-fold, varying with the number and ages of affected relatives and degree of relationship to the proband.⁸ In Lynch syndrome families, it is possible that modifier genes participate in the milieu in which cancer manifests.⁹⁻¹⁶ Noncarriers of MMR gene mutations may share predisposing genetic risk with their mutation-carrying relatives other than that caused by the MMR gene mutation and therefore may be at increased risk compared with the general population. If, however, the MMR mutation accounts for all the excess cancer risks in these families, then noncarriers should be at population risk. In this study, we estimated cancer risks for mutation carriers and noncarriers, who had no prior diagnosis of cancer, from families with MMR gene mutations from the Colon Cancer Family Registry, using a prospective cohort.

PATIENTS AND METHODS

Colon Cancer Family Registry

This study, using the Colon Cancer Family Registry, included carriers of pathogenic MMR gene mutations and their noncarrier relatives. Details of the Colon Cancer Family Registry have been published previously¹⁷ and can be found at the National Cancer Institute Web site (<http://epi.grants.cancer.gov/CFR/>). Families were recruited between 1997 and 2010 and were ascertained via CRC cases identified from population cancer registries in the United States (Washington, California, Arizona, Minnesota, Colorado, New Hampshire, North Carolina, and Hawaii), Australia (Victoria), and Canada (Ontario) or from family cancer clinics in the United States (Mayo Clinic, Rochester, MN, and Cleveland Clinic, Cleveland, OH), Australia (Melbourne, Adelaide, Perth, Brisbane, and Sydney), and New Zealand (Auckland). Written informed consent was obtained from all study participants, and the study protocol was approved at each center.

Data Collection

At recruitment, baseline information on demographics, personal characteristics, personal and family history of cancer, cancer screening history, history of polyps, polypectomy, hysterectomy, and other surgeries was obtained from all participants. This participant information was updated approximately 5 and 10 years after baseline. Reported cancer diagnoses and ages at which these occurred were confirmed, where possible, using pathology reports, medical records, cancer registry reports, and/or death certificates. The location, histology, and behavior of cancer diagnoses were coded using International Classification of Diseases for Oncology (ICD-O).¹⁸ Blood and tumor tissue samples were collected for genetic testing.

MMR Gene Mutation Testing

MMR gene mutation testing was performed by Sanger sequencing or denaturing high-performance liquid chromatography, followed by confirmatory DNA sequencing. Large duplications and deletions were detected by multiplex ligation-dependent probe amplification.^{17,19-21} Mutation classification and nomenclature were determined using the InSiGHT Colon Cancer Gene Variant Database (<http://www.insight-group.org/mutations/>), the MMR genes variant database of the Memorial University of Newfoundland (<http://www.med.mun.ca/MMRvariants/>),²² and the MMR Gene Unclassified Variants Database (<http://www.mmrv.info/>).²³ Pathogenic mutations were defined as variants resulting in a stop codon, frameshift mutation, large dupli-

cation or deletion, or missense mutation previously reported within scientific literature to be pathogenic.

Eligibility Criteria

For this study, we assembled three subcohorts to estimate risk of CRC (CRC risk subcohort), risk of EC (EC risk subcohort), and risk of any other cancer (other cancer risk subcohort; Fig 1). Participants were eligible for all subcohorts if they had undergone genetic testing for their specific family germline MMR gene mutation and were confirmed to be either a carrier or noncarrier of this pathogenic mutation, had been followed up at least once since recruitment, and had no cancer diagnosis before or at the time of recruitment. A total of 81 carriers and 126 noncarriers were excluded from the CRC risk subcohort because they had a polypectomy before or at the time of recruitment. A total of 26 carriers and 46 noncarriers were excluded from the EC risk subcohort because they had a hysterectomy before or at the time of recruitment (Fig 1). For this analysis we did not have information on which participants were aware of their mutation status or when they became aware of their status in part because testing may have been conducted clinically, outside the scope of the study.

Statistical Analysis

Observation time began at completion of the baseline questionnaire and ended at the cancer diagnosis, death, or last follow-up, whichever occurred first. For CRC risk, we censored individuals at the time of polypectomy (except when it occurred within a year before the CRC diagnosis, in which case we assumed polypectomy was for the initial CRC diagnosis), and for EC risk, we censored each woman at the time of hysterectomy.

Observed numbers of cancer diagnoses were divided by the expected numbers of cancer diagnoses to calculate standardized incidence ratios (SIRs). Expected numbers of cancer diagnoses were calculated by multiplying the age-, sex-, and country-specific incidence for the general population by the corresponding observation time in the study cohort. Country-, age-, and sex-specific cancer incidences for the general population were obtained for the period from 1998 to 2002 from *Cancer Incidence in Five Continents*.²⁴ This 5-year period was selected as the closest available data set with respect to the mean calendar year of cancer diagnoses of the sample, and given that it averaged incidence over the 5-year period, it provides more stable estimates of incidence, especially for less common cancers. For cancer cases from the same family, the jackknife method was used to calculate 95% CIs by allowing for any correlation of risk between relatives from the same family²⁵; otherwise, we used exact methods assuming that observed cancer cases followed a Poisson distribution.

We estimated SIRs for the following cancers observed more than once in carriers and noncarriers: colon and/or rectum (ICD-O C18 to C20), pancreas (ICD-O C25), stomach (ICD-O C16), kidney and renal pelvis (ICD-O C64 and C65), urinary bladder (ICD-O C67), and lung (ICD-O C34) for both sexes; endometrium (ICD-O C54 and C55), ovary (ICD-O C56), and breast (ICD-O C50) for females; and prostate (ICD-O C61) for males.

Kaplan-Meier statistics were used to estimate age-dependent cumulative risk (penetrance) at 5 and 10 years. All reported statistical tests were two-sided and $P < .05$ was considered statistically significant. STATA version 11.0 (STATA, College Station, TX)²⁶ was used for all statistical analyses.

RESULTS

Selection of eligible carriers and noncarriers of an MMR gene mutation from the Colon Cancer Family Registry for each cancer-specific analysis to estimate risk of CRC, EC, and other cancers is depicted in Figure 1.

CRC Risk Subcohort

This subcohort included 365 carriers and 903 noncarriers from 284 families with MMR gene mutations (Table 1). Of the 365 carriers, 310 (85%) were first-degree relatives, 50 (14%) were second-degree relatives, and five (1%) were third-degree relatives of patients with

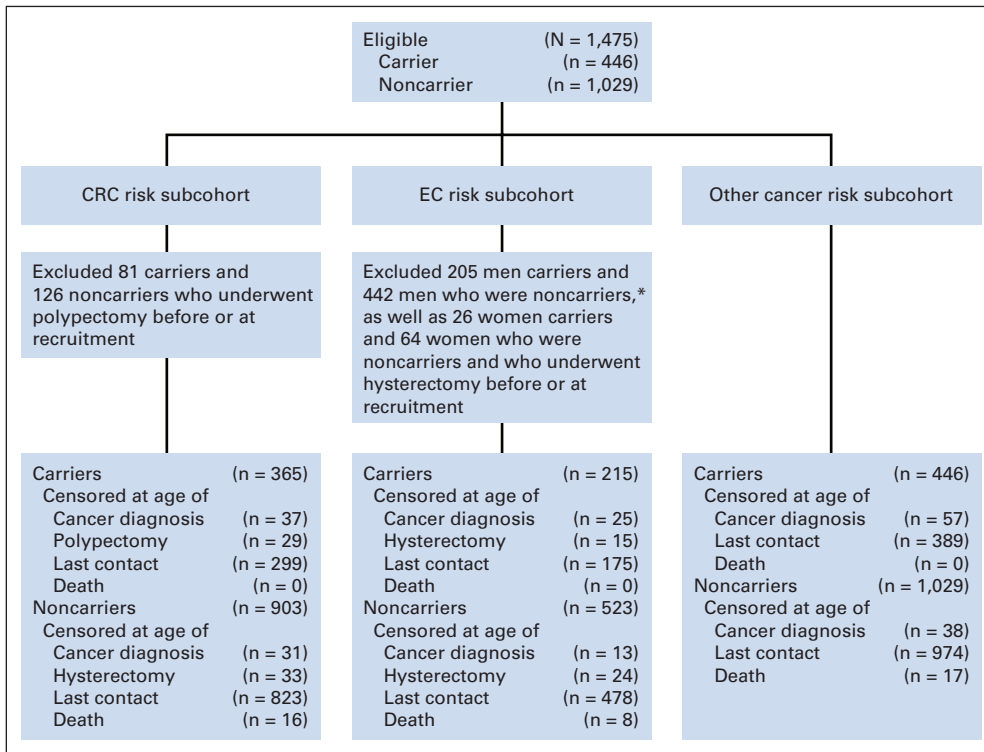


Fig 1. Flow diagram of the selection of carriers and noncarriers of a mismatch repair gene mutation. CRC, colorectal cancer; EC, endometrial cancer. (*) Although the EC risk cohort was composed of women, a note of clarification with respect to the men excluded from this group is provided.

CRC. Of the 903 noncarriers, 583 (64%) were first-degree relatives, 169 (19%) were second-degree relatives, and 151 (17%) were third-degree relatives of patients with CRC.

Over a median follow-up of 5 years, 16 mutation carriers (*MLH1*, n = 9; *MSH2*, n = 4; *MSH6*, n = 2; *PMS2*, n = 1) were diagnosed with CRC at a median age of 49 years (incidence rate, 8.84; 95% CI, 5.42 to 14.43 per 1,000 person-years; SIR, 20.48; 95% CI, 11.71 to 33.27; *P* < .001; Table 2). The CRC SIRs for carriers of specific MMR gene mutations were 39.40 (95% CI, 18.02 to 74.80) for *MLH1*, 10.76 (95% CI, 2.93 to 27.55) for *MSH2*, 17.19 (95% CI, 2.08 to 62.10) for *MSH6*, and 15.47 (95% CI, 0.39 to 86.21) for *PMS2*.

Five noncarriers were diagnosed with CRC at a median age of 60 years (incidence rate, 1.01; 95% CI, 0.42 to 2.44 per 1,000 person-years). The overall SIR for noncarriers was 1.02 (95% CI, 0.33 to 2.39; *P* = .97). All of these CRCs were observed in first-degree relatives of patients with CRC. The SIR was 1.43 (95% CI, 0.46 to 3.34) when analysis was restricted to noncarriers who were first-degree relatives of patients with CRC.

Cumulative risks of CRC were 4.14% (95% CI, 2.35% to 7.24%) at 5 years and 8.05% (95% CI, 4.46% to 14.29%) at 10 years of prospective follow-up for carriers and 0.39% (95% CI, 0.12% to 1.20%) at 5 years and 2.04% (95% CI, 0.49% to 8.30%) at 10 years for noncarriers (Fig 2 and Table 3).

The frequency of colonoscopy screening was not different between individuals without CRC (unaffected) and those with CRC (affected). On average, unaffected carriers were screened once every 2.7 years (95% CI, 2.5 to 3.0 years), whereas affected carriers were screened every 2.5 years (95% CI, 1.4 to 3.5 years; *P* = .63). Unaffected noncarriers were screened every 3.9 years (95% CI, 3.7 to 4.1 years), whereas affected noncarriers were screened every 3.9 years (95% CI, 0

to 8.6 years; *P* = .98). Colonoscopy during the follow-up period for carriers and noncarriers is shown in Appendix Table A1 (online only).

EC Risk Subcohort

This female subcohort included 215 carriers and 523 noncarriers from 229 families with MMR gene mutations (Table 1). Over a median follow-up of 5 years, six carriers were diagnosed with EC at a median age of 53 years (incidence rate, 5.66; 95% CI, 2.54 to 12.59 per 1,000 person-years). The corresponding SIR was 30.62 (95% CI, 11.24 to 66.64; *P* < .001) for carriers of any MMR gene mutation (Table 2). EC was diagnosed in two *MLH1* mutation carriers (SIR, 27.18; 95% CI, 6.80 to 108.66) and four *MSH2* mutation carriers (SIR, 44.92; 95% CI, 16.86 to 119.68). Cumulative risks were estimated to be 2.84 (95% CI, 1.06 to 7.46) at 5 years and 9.84 (95% CI, 3.45 to 26.33) at 10 years of prospective follow-up (Table 3). No EC was observed in noncarriers.

Other Cancer Risk Subcohort

This subcohort included 446 carriers and 1,029 noncarriers from 300 families with MMR gene mutations (Table 1). Over a median follow-up of 5 years, for carriers, we observed three ovarian cancers (SIR, 18.81; 95% CI, 3.88 to 54.95; *P* < .001), three renal cancers (two kidney cancers and one renal pelvis cancer; SIR, 11.22; 95% CI, 2.31 to 32.79; *P* < .001), two pancreatic cancers (SIR, 10.68; 95% CI, 2.68 to 47.70; *P* = .001), two gastric cancers (SIR, 9.78; 95% CI, 1.18 to 35.30; *P* = .009), two urinary bladder cancers (SIR, 9.51; 95% CI, 1.15 to 34.37; *P* = .009), seven female breast cancers (SIR, 3.95; 95% CI, 1.59 to 8.13; *P* = .001), and three prostate cancers (Table 2). Cancers observed in only one carrier each included cancer of the esophagus (ICD-O C15.9), biliary tract (ICD-O C24.0), liver (ICD-O C22.1),

Cancer Risks for MMR Gene Mutation Carriers and Noncarriers

Table 1. Baseline Demographics and Clinical Characteristics of Carriers and Noncarriers of a Mismatch Repair Gene Mutation

Demographic or Clinical Characteristic	CRC Risk Subcohort				EC Risk Subcohort				Other Cancer Risk Subcohort			
	Carriers (n = 365)		Noncarriers (n = 903)		Carriers (n = 215)		Noncarriers (n = 523)		Carriers (n = 446)		Noncarriers (n = 1,029)	
	No.	%	No.	%	No.	%	No.	%	No.	%	No.	%
MMR gene mutated												
<i>MLH1</i>	134	37			87	41			161	36		
<i>MSH2</i>	178	49			105	49			222	50		
<i>MSH6</i>	40	11			18	8			47	11		
<i>PMS2</i>	13	3			5	2			16	3		
Sex												
Female	201	55	523	58	215	100	523	100	241	54	587	57
Male	164	45	380	42	—	—	—	—	205	46	442	43
Race												
White	346	96.4	847	96.3	205	97.2	488	96	423	96.4	965	96
Latino/Hispanic	1	0.3	13	1.5	1	0.5	7	1	4	0.9	17	2
Asian	9	2.5	8	0.9	3	1.4	5	1	9	2.0	9	1
Middle Eastern	2	0.6	5	0.6	2	0.9	4	1	2	0.5	6	1
Other	1	0.3	7	0.8	0	0	5	1	1	0.2	7	1
Unknown	6		23		4		14		7		25	
Country of recruitment												
Canada	24	6	27	3	9	4	23	4	24	5	30	3
United States	50	14	110	12	31	14	69	13	75	17	135	13
Australasia	291	80	766	85	175	81	431	82	347	78	864	84
Source of ascertainment												
Population based	59	16	135	15	35	16	77	15	71	16	154	15
Clinic based	306	84	768	85	180	84	446	85	375	84	875	85
Age at recruitment, years												
Mean		39.9		48.3		39.8		47.3		41.3		48.9
SD		13.8		15.6		13.1		15.9		13.9		15.4
Follow-up												
Total person-years		1,809		4,930		1,061		2,848		2,365		5,880
Mean, years		5.0		5.5		4.9		5.5		5.3		5.7
SD, years		2.5		2.5		2.5		2.5		2.4		2.5
Median, years		4.9		5.4		4.8		5.4		5.2		5.6
Range, years		0.3-11.2		0.1-11.9		0.2-11.2		0.2-11.9		0.4-11.2		0.1-11.9

Abbreviations: CRC, colorectal cancer; EC, endometrial cancer; SD, standard deviation.

adrenal gland (ICD-O C74.9), small intestine (ICD-O C17.9), and ureter (ICD-O C66.9).

For noncarriers, there was no evidence of an increased risk of lung, breast, and prostate cancers. In noncarriers, we also observed one case each of pancreatic (ICD-O C25.9), urinary bladder (ICD-O C67.9), thyroid (ICD-O C73.9), and esophageal (ICD-O C15.9) cancer (Table 2).

DISCUSSION

We confirmed that MMR gene mutation carriers were at increased risk of a wide variety of cancers and found that there was no evidence of an increased risk of cancer for their noncarrier relatives. A major strength of our study is the prospective nature of the design, because observation time for carriers and noncarriers commenced before cancer diagnosis. This design, therefore, avoided ascertainment bias commonly present in retrospective analyses, particularly when estimates of cancer risk are made using relatives who are enrolled in cancer clinics because they have been diagnosed with cancer. A further strength of the prospective analysis is that it provides an estimate, based on em-

pirical data, of future cancer risk at the time they come under clinical care. Our estimated 10-year risk of CRC for carriers with a median age of 49 years (8.05%; 95% CI, 4.46% to 14.29%) is comparable to our previous estimate (using an ascertainment-corrected retrospective analysis) of the 10-year risk for *MSH6* mutation carriers at age 50 years (6% [95% CI, 3% to 9%] for men and 3% [95% CI, 1% to 5%] for women).²⁷ It seems to be lower than a previous retrospective estimate of the 10-year estimates for *MLH1* and *MSH2* carriers (26% for men and 13% for women).²⁸

An unanticipated finding of our study is the confirmation of an increased risk for cancers of the breast and pancreas for MMR gene mutation carriers. Although risk of pancreatic cancer has been investigated in Lynch syndrome,²⁹⁻³³ the evidence was inconsistent. The study showing evidence for an association was that of Kastrinos et al,³⁴ which recently showed an increased risk of pancreatic cancer in Lynch syndrome (hazard ratio, 8.6; 95% CI, 4.5 to 15.7). This result is consistent with our finding (test for difference, *P* = .79). However, given the limited evidence for efficacy of screening for pancreatic cancers,³⁵ expert opinion has not yet advocated pancreatic cancer screening in the context of Lynch syndrome.

Table 2. Age-, Sex-, and Country-Specific SIRs and Corresponding 95% CIs by Cancer Site for Carriers and Noncarriers of a Mismatch Repair Gene Mutation Compared With the General Population

Cancer	Observed No.	Expected No.	Age at Diagnosis (years)		SIR	95% CI	P
			Median	Range			
Carriers							
Colorectal cancer	16	0.78	49	26-75	20.48	11.71 to 33.27	<.001
Endometrial cancer	6	0.20	53	42-66	30.62	11.24 to 66.64	<.001
Ovary cancer	3	0.16	52	45-56	18.81	3.88 to 54.95	<.001
Renal cancer*	3	0.27	71	70-77	11.22	2.31 to 32.79	<.001
Pancreas cancer	2	0.19	64	63-65	10.68	2.68 to 47.70	.001
Gastric cancer	2	0.20	59	31-88	9.78	1.18 to 35.30	.009
Urinary bladder cancer	2	0.21	62	55-68	9.51†	1.15 to 34.37	.009
Breast cancer‡	7	1.77	56	42-62	3.95	1.59 to 8.13	.001
Prostate cancer	3	1.21	54	50-62	2.49	0.51 to 7.27	.18
Noncarriers							
Colorectal cancer	5	4.88	60	55-73	1.02	0.33 to 2.39	.97
Lung cancer	3	4.68	69	46-75	0.64	0.13 to 1.87	.51
Breast cancer‡	5	6.95	59	52-75	0.72	0.23 to 1.68	.52
Prostate cancer	9	5.53	67	57-82	1.63	0.74 to 3.09	.18

Abbreviation: SIR, standardized incidence ratio.
 *Kidney and renal pelvis.
 †Adjusted for family using Jackknife method.
 ‡For females only.

A more controversial association with Lynch syndrome is that of breast cancer. Initially raised by Lynch et al³⁶ several decades ago, the issue of breast cancer risk in Lynch syndrome has been debated with evidence for and against this association. Multiple case reports describing MMR-deficient breast cancers, including cases of male breast cancer, have been published.³⁷⁻⁴¹ Walsh et al⁴⁰ showed that about half of breast cancers observed in MMR gene mutation carriers have loss of expression in the tumor of the gene that is mutated in the germline. However, this and other studies were not able to address whether the MMR deficiency caused breast cancer or was a phenotype of a breast cancer caused by another factor. In this report, we observed an increased risk of breast cancer for MMR gene mutation carriers followed prospectively. Although the numbers are small, the risk was estimated to be increased four-fold above that of the general population, suggest-

ing that MMR mutation carriers may benefit from enhanced screening. Further clarification of age-specific magnitude of risk is needed to determine whether ages at screening or methods such as use of magnetic resonance imaging should be modified in Lynch syndrome.

In addition to defining spectrum and cancer risks for MMR gene mutation carriers, it is important to clarify the risk of CRC and other cancers for noncarrier relatives. Identification of mutation noncarriers is considered to be one of the major benefits of MMR gene testing, providing reassurance that these people are at substantially lower risk than their mutation-carrying relatives and, therefore, not subject to the same costly, frequent, and invasive screening and risk-reduction

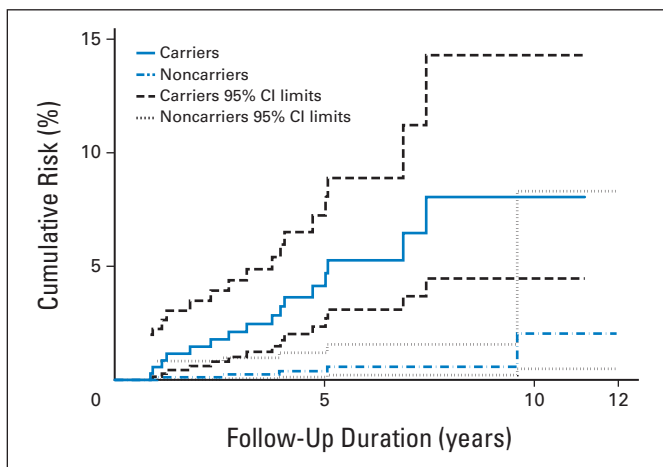


Fig 2. Kaplan-Meier curves for cumulative risks and their corresponding 95% CIs of colorectal cancer at 5 and 10 years.

Table 3. Cumulative Risk of Cancer Over 5 and 10 Years and Corresponding 95% CIs for Carriers and Noncarriers of a Mismatch Repair Gene Mutation Who Had No Previous Diagnosis of Cancer at Baseline

Cancer	5 Years		10 Years	
	Cumulative Risk (%)	95% CI (%)	Cumulative Risk (%)	95% CI (%)
Carriers				
Colorectal cancer	4.14	2.35 to 7.24	8.05	4.46 to 14.29
Endometrial cancer	2.84	1.06 to 7.46	9.84	3.45 to 26.33
Ovary cancer	0.29	0.04 to 20.5	3.11	0.82 to 11.43
Renal cancer*	0.80	0.26 to 2.45	—	—
Pancreas cancer	0.33	0.05 to 2.34	0.95	0.22 to 3.97
Gastric cancer	0.53	0.13 to 2.10	—	—
Urinary bladder cancer	0.28	0.04 to 1.97	2.71	0.47 to 14.93
Breast cancer†	0.85	0.27 to 2.65	4.49	1.78 to 11.08
Noncarriers				
Colorectal cancer	0.39	0.12 to 1.20	2.04	0.49 to 8.30

*Kidney and renal pelvis.
 †For females only.

strategies. Because no cancer arises, to our knowledge, as a result of a single gene mutation, even highly penetrant disorders such as Lynch syndrome might arise on the background of multiple other genetic variants that modify cancer risks. If that is the case, then relatives who do not carry the family-specific pathogenic MMR mutation may still have a cancer risk that is elevated compared with the general population. In this study, we found no evidence of an increased risk of cancers for the noncarrier relatives, whereas carriers of an MMR gene mutation from the same families were at increased risk of a wide variety of cancers. In a similar scenario, it has been observed that there is no evidence of increased risk of breast cancer^{42,43} or ovarian cancer⁴⁴ for noncarriers from families carrying mutations of *BRCA1* or *BRCA2*.

Estimating penetrance for CRC is particularly challenging in the high-risk family setting because surveillance colonoscopy is likely to be offered to those with a strong family history of CRC or if Lynch syndrome has been diagnosed in a relative. The colonoscopy likely changes the natural history of the disease by removing the precursor lesion at least some of the time. We observed that those who were mutation carriers (although they may not have known about their mutation status at the time) were having frequent colonoscopies (approximately once every 3 years) yet still manifested an appreciable high risk for development of CRC. In contrast, those who were not mutation carriers (although they also may not have known of their mutation status) were also having colonoscopies almost as frequently as the carriers (approximately once every 4 years). Therefore, we cannot dismiss the possibility that noncarriers who are relatives of mutation carriers are at increased risk of CRC, but their frequent colonoscopies may have reduced their risk.

We also found no evidence of increased risk of extracolonic cancers for the noncarriers. It is unlikely that this finding can be attributed to increased screening for these cancers because, unlike CRC, screening does not alter the risk for extracolonic cancers. For example, screening for urothelial, endometrial, and ovarian cancers does not reduce the risk of these diseases, because it is done for early detection only and not for removal of precursor lesions, and therefore, screening would not influence the estimates of these cancer risks.

There are some limitations to our study, most notably the small number of events and a short follow-up duration. We do not have

sufficient power to exclude a two-fold increased risk of CRC for the noncarriers. Another possible limitation is that censoring each individual at the age of polypectomy could have resulted in underestimating the true cancer risk.

In conclusion, our prospective analysis provides unbiased estimates of cancer risks for MMR gene mutation carriers, including significantly increased risks of recognized Lynch syndrome-associated cancers (colorectal, endometrial, ovarian, renal, gastric, and urinary bladder) and of breast cancer and pancreatic cancer. For the noncarrier relatives of family-specific MMR gene mutations, we found no evidence that their risks of CRC or other cancers exceed the population risks.

AUTHORS' DISCLOSURES OF POTENTIAL CONFLICTS OF INTEREST

The author(s) indicated no potential conflicts of interest.

AUTHOR CONTRIBUTIONS

Conception and design: Aung Ko Win, Mark A. Jenkins

Provision of study materials or patients: Joanne P. Young, Noralane M. Lindor, Katherine M. Tucker, Dennis J. Ahnen, Graeme P. Young, Daniel D. Buchanan, Graham G. Giles, Ingrid Winship, Finlay A. Macrae, Jack Goldblatt, Melissa C. Southey, Julie Arnold, Stephen N. Thibodeau, Bharati Bapat, John A. Baron, Graham Casey, Steven Gallinger, Loïc Le Marchand, Robert W. Haile, John L. Hopper, Mark A. Jenkins

Collection and assembly of data: Aung Ko Win, Noralane M. Lindor, Katherine M. Tucker, Daniel D. Buchanan, Melissa C. Southey, Shanaka R. Gunawardena, Mark A. Jenkins

Data analysis and interpretation: Aung Ko Win, Joanne P. Young, Noralane M. Lindor, Katherine M. Tucker, Dennis J. Ahnen, Graeme P. Young, Daniel D. Buchanan, Mark Clendenning, Graham G. Giles, Ingrid Winship, Finlay A. Macrae, Jack Goldblatt, Melissa C. Southey, Julie Arnold, Stephen N. Thibodeau, Bharati Bapat, John A. Baron, Graham Casey, Steven Gallinger, Loïc Le Marchand, Polly A. Newcomb, Robert W. Haile, John L. Hopper, Mark A. Jenkins

Manuscript writing: All authors

Final approval of manuscript: All authors

REFERENCES

- Dunlop MG, Farrington SM, Nicholl I, et al: Population carrier frequency of hMSH2 and hMLH1 mutations. *Br J Cancer* 83:1643-1645, 2000
- Hampel H, de la Chapelle A: The search for unaffected individuals with Lynch syndrome: Do the ends justify the means? *Cancer Prev Res* 4:1-5, 2011
- Umar A, Boland CR, Terdiman JP, et al: Revised Bethesda Guidelines for hereditary non-polyposis colorectal cancer (Lynch syndrome) and microsatellite instability. *J Natl Cancer Inst* 96:261-268, 2004
- Järvinen HJ, Aarnio M, Mustonen H, et al: Controlled 15-year trial on screening for colorectal cancer in families with hereditary nonpolyposis colorectal cancer. *Gastroenterology* 118:829-834, 2000
- de Jong AE, Hendriks YM, Kleibeuker JH, et al: Decrease in mortality in Lynch syndrome families because of surveillance. *Gastroenterology* 130:665-671, 2006
- Schmeler KM, Lynch HT, Chen LM, et al: Prophylactic surgery to reduce the risk of gynecologic cancers in the Lynch syndrome. *N Engl J Med* 354:261-269, 2006
- Carayol J, Khat M, Maccario J, et al: Hereditary non-polyposis colorectal cancer: Current risks of colorectal cancer largely overestimated. *J Med Genet* 39:335-339, 2002
- Taylor DP, Burt RW, Williams MS, et al: Population-based family history-specific risks for colorectal cancer: A constellation approach. *Gastroenterology* 138:877-885, 2010
- Pande M, Amos CI, Osterwisch DR, et al: Genetic variation in genes for the xenobiotic-metabolizing enzymes CYP1A1, EPHX1, GSTM1, GSTT1, and GSTP1 and susceptibility to colorectal cancer in Lynch syndrome. *Cancer Epidemiol Biomarkers Prev* 17:2393-2401, 2008
- Campbell PT, Edwards L, McLaughlin JR, et al: Cytochrome P450 17A1 and catechol O-methyltransferase polymorphisms and age at Lynch syndrome colon cancer onset in Newfoundland. *Clin Cancer Res* 13:3783-3788, 2007
- Felix R, Bodmer W, Fearnhead NS, et al: GSTM1 and GSTT1 polymorphisms as modifiers of age at diagnosis of hereditary nonpolyposis colorectal cancer (HNPCC) in a homogeneous cohort of individuals carrying a single predisposing mutation. *Mutat Res* 602:175-181, 2006
- Krüger S, Engel C, Bier A, et al: The additive effect of p53 Arg72Pro and RNASEL Arg462Gln genotypes on age of disease onset in Lynch syndrome patients with pathogenic germline mutations in MSH2 or MLH1. *Cancer Lett* 252:55-64, 2007
- Moisio AL, Sistonen P, Mecklin JP, et al: Genetic polymorphisms in carcinogen metabolism and their association to hereditary nonpolyposis colon cancer. *Gastroenterology* 115:1387-1394, 1998
- Reeves SG, Rich D, Meldrum CJ, et al: IGF1 is a modifier of disease risk in hereditary non-polyposis colorectal cancer. *Int J Cancer* 123:1339-1343, 2008
- Talseth-Palmer BA, Brenne IS, Ashton KA, et al: Colorectal cancer susceptibility loci on chromosome 8q23.3 and 11q23.1 as modifiers for disease expression in Lynch syndrome. *J Med Genet* 48:279-284, 2011

16. Wijnen JT, Brohet RM, van Eijk R, et al: Chromosome 8q23.3 and 11q23.1 variants modify colorectal cancer risk in Lynch syndrome. *Gastroenterology* 136:131-137, 2009
17. Newcomb PA, Baron J, Cotterchio M, et al: Colon Cancer Family Registry: An international resource for studies of the genetic epidemiology of colon cancer. *Cancer Epidemiol Biomarkers Prev* 16:2331-2343, 2007
18. Fritz A, Percy C, Jack A, et al: International Classification of Diseases for Oncology (ICD-O) (ed 3). Geneva, Switzerland, WHO, 2000
19. Senter L, Clendenning M, Sotamaa K, et al: The clinical phenotype of Lynch syndrome due to germ-line PMS2 mutations. *Gastroenterology* 135:419-428, 2008
20. Southey MC, Jenkins MA, Mead L, et al: Use of molecular tumor characteristics to prioritize mismatch repair gene testing in early-onset colorectal cancer. *J Clin Oncol* 23:6524-6532, 2005
21. Smith L, Tesoriero A, Mead L, et al: Large genomic alterations in hMSH2 and hMLH1 in early-onset colorectal cancer: Identification of a large complex de novo hMLH1 alteration. *Clin Genet* 70:250-252, 2006
22. Woods MO, Williams P, Careen A, et al: A new variant database for mismatch repair genes associated with Lynch syndrome. *Hum Mutat* 28:669-673, 2007
23. Ou J, Niessen RC, Vonk J, et al: A database to support the interpretation of human mismatch repair gene variants. *Hum Mutat* 29:1337-1341, 2008
24. Curado MP, Edwards B, Shin HR, et al: Cancer Incidence in Five Continents Vol. IX, IARC Scientific Publications No. 160. Lyon, France, International Agency for Research on Cancer, 2007
25. Gould W: Jackknife estimation. *Stata Technical Bull* 4:25-29, 1995
26. StataCorp: Stata Statistical Software: Release 11. College Station, TX, StataCorp, 2009
27. Baglietto L, Lindor NM, Dowty JG, et al: Risks of Lynch syndrome cancers for MSH6 mutation carriers. *J Natl Cancer Inst* 102:193-201, 2010
28. Chen S, Wang W, Lee S, et al: Prediction of germline mutations and cancer risk in the Lynch syndrome. *JAMA* 296:1479-1487, 2006
29. Aarnio M, Mecklin JP, Aaltonen LA, et al: Life-time risk of different cancers in hereditary non-polyposis colorectal cancer (HNPCC) syndrome. *Int J Cancer* 64:430-433, 1995
30. Watson P, Lynch HT: Extracolonic cancer in hereditary nonpolyposis colorectal cancer. *Cancer* 71:677-685, 1993
31. Aarnio M, Sankila R, Pukkala E, et al: Cancer risk in mutation carriers of DNA-mismatch-repair genes. *Int J Cancer* 81:214-218, 1999
32. Vasen HF, Stormorken A, Menko FH, et al: MSH2 mutation carriers are at higher risk of cancer than MLH1 mutation carriers: A study of hereditary nonpolyposis colorectal cancer families. *J Clin Oncol* 19:4074-4080, 2001
33. Hutter P, Couturier A, Scott RJ, et al: Complex genetic predisposition to cancer in an extended HNPCC family with an ancestral hMLH1 mutation. *J Med Genet* 33:636-640, 1996
34. Kastrinos F, Mukherjee B, Tayob N, et al: Risk of pancreatic cancer in families with Lynch syndrome. *JAMA* 302:1790-1795, 2009
35. Canto MI, Goggins M, Yeo CJ, et al: Screening for pancreatic neoplasia in high-risk individuals: An EUS-based approach. *Clin Gastroenterol Hepatol* 2:606-621, 2004
36. Lynch HT, Watson P, Krieglger M, et al: Differential diagnosis of hereditary nonpolyposis colorectal cancer (Lynch syndrome I and Lynch syndrome II). *Dis Colon Rectum* 31:372-377, 1988
37. Boyd J, Rhei E, Federici MG, et al: Male breast cancer in the hereditary nonpolyposis colorectal cancer syndrome. *Breast Cancer Res Treat* 53:87-91, 1999
38. Jensen UB, Sunde L, Timshel S, et al: Mismatch repair defective breast cancer in the hereditary nonpolyposis colorectal cancer syndrome. *Breast Cancer Res Treat* 120:777-782, 2010
39. Shanley S, Fung C, Milliken J, et al: Breast cancer immunohistochemistry can be useful in triage of some HNPCC families. *Fam Cancer* 8:251-255, 2009
40. Walsh MD, Buchanan DD, Cummings MC, et al: Lynch syndrome-associated breast cancers: Clinicopathologic characteristics of a case series from the colon cancer family registry. *Clin Cancer Res* 16:2214-2224, 2010
41. Scott RJ, McPhillips M, Meldrum CJ, et al: Hereditary nonpolyposis colorectal cancer in 95 families: Differences and similarities between mutation-positive and mutation-negative kindreds. *Am J Hum Genet* 68:118-127, 2001
42. Domchek SM, Gaudet MM, Stopfer JE, et al: Breast cancer risks in individuals testing negative for a known family mutation in BRCA1 or BRCA2. *Breast Cancer Res Treat* 119:409-414, 2010
43. Korde LA, Mueller CM, Loud JT, et al: No evidence of excess breast cancer risk among mutation-negative women from BRCA mutation-positive families. *Breast Cancer Res Treat* 125:169-173, 2011
44. Kauff ND, Mitra N, Robson ME, et al: Risk of ovarian cancer in BRCA1 and BRCA2 mutation-negative hereditary breast cancer families. *J Natl Cancer Inst* 97:1382-1384, 2005

Affiliations

Aung Ko Win, Graham G. Giles, Ingrid Winship, Melissa C. Southey, John L. Hopper, and Mark A. Jenkins, The University of Melbourne; Ingrid Winship and Finlay A. Macrae, The Royal Melbourne Hospital, Parkville; Graham G. Giles, Cancer Epidemiology Centre, Cancer Council Victoria, Carlton, Victoria; Joanne P. Young, Daniel D. Buchanan, and Mark Clendenning, Queensland Institute of Medical Research; Joanne P. Young, School of Medicine, University of Queensland, Herston, Queensland; Katherine M. Tucker, Hereditary Cancer Clinic, Prince of Wales Hospital, Randwick, New South Wales; Graeme P. Young, Flinders Centre for Cancer Prevention and Control, Flinders University, Adelaide, South Australia; Jack Goldblatt, Genetic Services of Western Australia and School of Paediatrics and Child Health, University of Western Australia, Perth, Australia; Julie Arnold, New Zealand Familial Gastrointestinal Cancer Registry, Auckland City Hospital, Auckland, New Zealand; Bharati Bapat and Steven Gallinger, Samuel Lunenfeld Research Institute, Mount Sinai Hospital; Bharati Bapat, University of Toronto; Steven Gallinger, Cancer Care Ontario, Toronto, Ontario, Canada; Noralane M. Lindor, Stephen N. Thibodeau, and Shanaka R. Gunawardena, Mayo Clinic, Rochester, MN; Dennis J. Ahnen, Denver Veterans Affairs Medical Center, School of Medicine, University of Colorado, Denver, CO; John A. Baron, University of North Carolina, Chapel Hill, NC; Graham Casey and Robert W. Haile, University of Southern California, Los Angeles, CA; Loïc Le Marchand, University of Hawaii Cancer Center, Honolulu, HI; and Polly A. Newcomb, Fred Hutchinson Cancer Research Center, Seattle, WA.