

SHORT REPORT

Open Access

# Long term impact of large scale community-directed delivery of doxycycline for the treatment of onchocerciasis

Francesca Tamarozzi<sup>1</sup>, Nicholas Tendongfor<sup>2,3</sup>, Peter A Enyong<sup>3,4</sup>, Mathias Esum<sup>3</sup>, Brian Faragher<sup>5</sup>, Samuel Wanji<sup>2,3</sup> and Mark J Taylor<sup>1\*</sup>

## Abstract

**Background:** Anti-*Wolbachia* treatment with doxycycline is effective in sterilising and killing adult *Onchocerca volvulus* nematodes, proving superior to ivermectin and of great potential as an alternative approach for the treatment and control of onchocerciasis, particularly in areas of *Loa loa* co-endemicity. Nevertheless, the length of the required treatment poses potential logistical problems and risk of poor compliance, raising a barrier to the use of doxycycline in Mass Drug Administration (MDA) strategies. In 2007 and 2008 a feasibility trial of community-directed treatment with doxycycline was carried out in two health districts in Cameroon, co-endemic for *O. volvulus* and *L. loa*. With 17,519 eligible subjects, the therapeutic coverage was 73.8% with 97.5% compliance, encouraging the feasibility of using doxycycline community-directed delivery in restricted populations of this size. The current study evaluated the effectiveness of this community-directed delivery of doxycycline four years after delivery.

**Findings:** Infection with *O. volvulus* was evaluated by skin biopsy and nodule palpation. Of the 507 subjects recruited, 375 had completed the treatment with doxycycline followed by one or two rounds of annual ivermectin MDA and 132 received one or two rounds of annual ivermectin MDA alone. Statistically significant lower microfilarial prevalence (17.0% [doxycycline plus ivermectin group], 27.0% [ivermectin only group],  $p = 0.014$ ) and load ( $p = 0.012$ ) were found in people that had received doxycycline followed by ivermectin compared to those who received ivermectin only.

**Conclusions:** This study demonstrates the long-term effectiveness of doxycycline treatment delivered with a community-directed strategy even when evaluated four years after delivery in an area of ongoing transmission. This finding shows that a multi-week course of treatment is not a barrier to community-delivery of MDA in restricted populations of this size and supports its implementation to compliment existing control strategies for onchocerciasis, where needed.

**Keywords:** *Onchocerca volvulus*, *Wolbachia*, Doxycycline, Community-directed delivery, Effectiveness

## Background

Onchocerciasis or 'river blindness' is a debilitating disease affecting an estimated 37 million people in Sub Saharan Africa and Latin America, with at least 500,000 people visually impaired and 270,000 blinded by the disease [1]. Annual or biannual Mass Drug Administration (MDA) of

ivermectin is the current strategy implemented by the African Programme for Onchocerciasis Control [2]. At the standard dose of 150 µg/kg, it is highly effective at reducing dermal microfilarial loads, but is only marginally active against adult worms [3,4], requiring sustained delivery for at least 15-17 years in order to interrupt transmission in areas of moderate transmission [5]. Moreover, the severe and occasionally fatal adverse reactions following ivermectin intake in people with high loads of *Loa loa* microfilariae (mf) are an obstacle to the implementation of

\* Correspondence: mark.taylor@liv.ac.uk

<sup>1</sup>Molecular and Biochemical Parasitology, Liverpool School of Tropical Medicine, Pembroke Place, Liverpool L3 5QA, UK

Full list of author information is available at the end of the article

onchocerciasis control programmes in areas of co-endemicity [6,7].

Four to six week courses of doxycycline have been proven in clinical trials to be highly effective at blocking embryogenesis of adult worms, and leading to a macrofilaricidal rate of 60-70% [8-10]. This demonstrates superior efficacy of doxycycline compared to ivermectin, and provides an important alternative treatment for onchocerciasis in areas of *L. loa* co-endemicity, in areas where evidence of sub-optimal efficacy of ivermectin occurs [11-13], and in programme endgame situations [14] to achieve elimination of the infection. Doxycycline targets the bacterial endosymbiont *Wolbachia*, and so can be used safely in areas where the *Wolbachia*-free *L. loa* is co-endemic, as it has no microfilaricidal activity against *L. loa* [10].

By virtue of its pronounced macrofilaricidal and embryostatic effects, it is expected that community-wide distribution of doxycycline will lead to long-term reductions in microfilaridermia. Nevertheless, one barrier to the widespread use of doxycycline is the perceived risk of poor compliance due to the length of treatment regimes [15]. In a phase III trial, Wanji and colleagues countered this perception by demonstrating the feasibility and safety of large-scale delivery of doxycycline using a community-directed strategy in areas of *L. loa* co-endemicity in Cameroon, naive to onchocerciasis control programmes [16]. Of 17,519 eligible subjects, 12,936 were treated with doxycycline in 2007 or 2008, giving a therapeutic coverage of 73.83% for the eligible population. Moreover, the 6 week course of treatment was completed by 97.5% of individuals who started it, as assessed by directly observed drug intake. Following community-directed delivery of doxycycline, communities received two rounds of annual ivermectin MDA, which was distributed as part of the national control programme that was extended to these areas. In addition to showing a high level of coverage and compliance to a 6 week course of doxycycline, the feasibility study highlighted the safety of this regime, in which there were no Severe Adverse Events (SAEs) in any of the 17,519 people during treatment with doxycycline, yet when treated with ivermectin two SAEs were reported, as observed in other *L. loa* co-endemic areas [6,7]. The current single-blind evaluation trial was carried out to assess the long-term effectiveness of this community-directed treatment with doxycycline in reducing skin microfilarial prevalence and load four years after implementation in an area of ongoing infection transmission.

## Methods

The study was approved by the Research Ethics Committee of the Liverpool School of Tropical Medicine (UK) and the Institutional Review Board of the Medical

Research Station of Kumba (Cameroon), and registered in the ISRCTN register (ISRCTN95189962). The study was carried out in three health areas of Mbanga health district in the littoral region of Cameroon. Community-directed delivery of doxycycline was implemented in 2007 and 2008 [16], followed by two rounds of ivermectin MDA, as part of the national control programme. Participants of both sexes, aged 19 or above, were recruited from those who completed the 6 week course of doxycycline MDA in 2007 or 2008, plus one or two annual treatments of ivermectin MDA, and those who received ivermectin MDA alone. End-points were microfilarial prevalence (primary outcome) and load in the two treatment groups. Presence and number of palpable nodules was also assessed.

For the sample size calculation, the expected reduction in microfilaridermia prevalence in the two groups was estimated using the Rapid Evidence Assessment of *O. volvulus* prevalence in the investigated areas [16,17] and its expected change after the implemented treatments [10,12]. A sample size of 500 subjects had a 90% power to detect a difference in prevalence of microfilaridermia of 16.0% (expected prevalence in the doxycycline plus ivermectin group) versus 26.8%. This was considered the smallest difference between groups relevant for effectiveness assessment. Moreover, this sample size was considered adequate to obtain an accurate estimate of differences between groups and also in the light of the expected microfilaridermia prevalence after two rounds of ivermectin MDA (58.6%).

Villages in each health area were randomly selected and inhabitants were invited to participate in the study. After a thorough explanation of the study's aim and execution in the local language, all participants gave informed consent prior to examination. For the assessment of microfilarial prevalence and load, two skin biopsies (skin snips) from the iliac crests were taken using a sterile corneoscleral punch and incubated in saline solution in microtitre plates overnight (10-18 h). The number of mf was counted and the skin biopsies weighed to calculate the number of mf per mg of skin (mf/mg). Body palpation was carried out to assess the presence and number of palpable onchocercal nodules. Both mf counting and body palpation were carried out in a blinded manner with regard to the treatment group.

## Statistical analysis

Differences in microfilarial and nodule prevalence between groups were assessed by Fisher's Exact test. Differences in microfilarial and nodule burden between groups were assessed by Mann-Whitney *U* test. A *p*-value  $\leq 0.05$  was considered significant. All analysis was carried out using SPSS Statistics 17.0 (IBM).

**Table 1 Characteristics of the investigated population**

Treatment group	Health district	Males (%)	Females (%)	Total	Mean age years (range)
Doxycycline + ivermectin	All	210 (56%)	165 (44%)	375	43.16 (19-81)
	Matouke	104 (57.14%)	78 (42.86%)	182	43.66 (19-74)
	Mombo	68 (54.84%)	56 (45.16%)	124	42.39 (19-81)
	Kotto	38 (55.07%)	31 (44.93%)	69	43.23 (23-78)
Ivermectin only	All	50 (37.88%)	82 (62.12%)	132	36.86 (19-71)
	Matouke	17 (26.56%)	47 (73.44%)	64	34.78 (19-62)
	Mombo	14 (53.85%)	12 (46.15%)	26	40.54 (20-69)
	Kotto	19 (45.24%)	23 (54.76%)	42	38.00 (20-71)

## Results

Five-hundred and seven people, 260 males and 247 females, were recruited from 17 villages of the three health areas investigated. Of those, 375 had completed the treatment with doxycycline followed by one or two annual rounds of ivermectin MDA and 132 received one or two annual rounds of ivermectin MDA alone (Table 1). There was no difference in the proportion of people who had received one versus two rounds of ivermectin between the groups (53.1% [one round of ivermectin in doxycycline plus ivermectin group], 59.8% [one round of ivermectin in ivermectin only group],  $p = 0.858$ ).

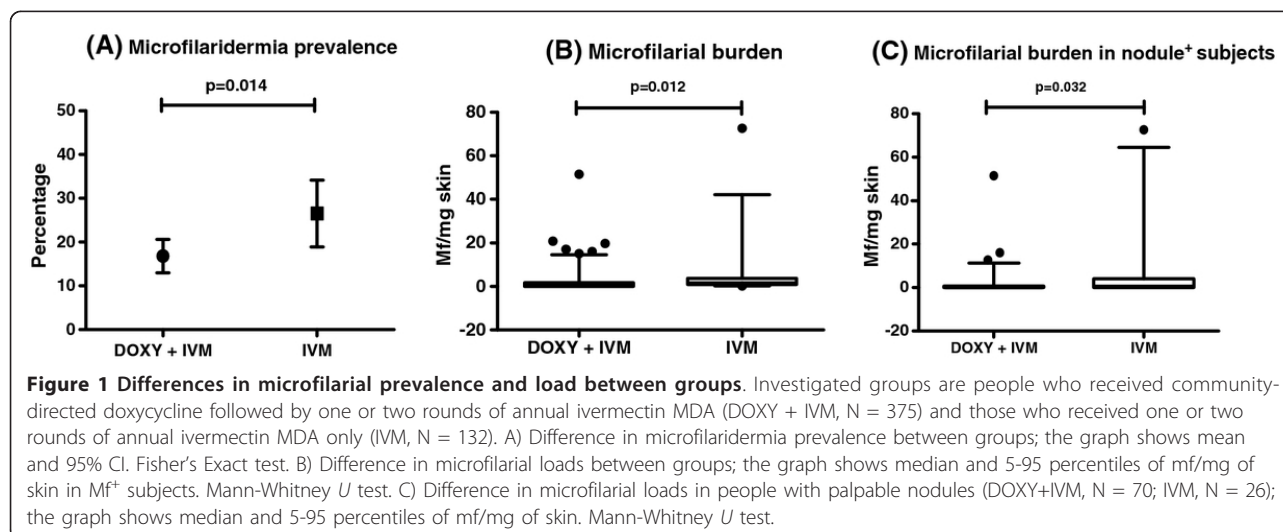
Microfilaridermia prevalence was significantly lower in people who received doxycycline followed by one or two annual rounds of ivermectin MDA compared to those who received ivermectin MDA alone ( $p = 0.014$ , Figure 1A and Table 2). The percentage of amicrofilaridemic people was 83.2% in the group that had received doxycycline followed by ivermectin MDA compared to 73.2% in the group that had received only ivermectin MDA. A significant difference was also found in microfilarial burden ( $p = 0.012$ , Figure 1B and Table 2), with people that had received doxycycline harbouring significantly lower

microfilarial loads. When evaluating those with palpable nodules, we found that microfilarial loads were significantly lower in those who received doxycycline ( $p = 0.032$ , Figure 1C and Table 2). In this subset of people, microfilaridermia prevalence was also lower in the group that had received doxycycline, even though it did not reach statistical significance ( $p = 0.091$ , Table 2). No differences were detected in palpable nodule prevalence and burden between the groups.

## Discussion

Our findings show that delivery of doxycycline with a community-directed approach is not only feasible, but also effective in reducing microfilaridermia prevalence and loads. Importantly, these results were obtained four years after implementation in an area of ongoing transmission and naive to previous control measures, and so demonstrate the long-term efficacy of community-wide doxycycline treatment.

Although this study demonstrates the feasibility and effectiveness of doxycycline treatment, the contraindications of this drug in children < 9 years old and in pregnancy and the desirability for shorter treatment regimes



**Table 2 Parasitological results and statistical differences between groups four years after doxycycline MDA implementation**

	Treatment group		p-value
	Doxycycline + ivermectin	Ivermectin only	
Mf prevalence (%) (95% CI)	17% (13%-21%)	27% (19%-35%)	<b>0.014</b>
Mf/mg skin Median (75-95 percentile)	0 (0-3.5)	0 (0.37-5.37)	<b>0.012</b>
Nodule prevalence (%) (95% CI)	19% (15%-23%)	20% (13%-27%)	0.776
Nodules/person Median (75-95 percentile)	0 (0-2)	0 (0-2)	0.720
Mf prevalence in nodule <sup>+</sup> subjects (%) (95% CI)	34% (23%-46%)	54% (33%-74%)	0.091
Mf/mg skin in nodule <sup>+</sup> subjects Median (75-95 percentile)	0 (0.71-11.33)	0 (4.00-64.53)	<b>0.032</b>

has driven the formation of the A·WOL consortium, which aims to discover and develop alternative anti-wolbachial drugs and regimes that overcome exclusion of these patient groups and reduce treatment timeframes [18].

The lack of difference in nodule prevalence and burden between groups most likely reflects the ongoing transmission of the infection in the area, where new incoming parasites may colonise already existing nodules [19]. Also, although doxycycline has been demonstrated in phase II trials to show a high rate of macrofilaricidal activity (60-70%) [8,10,19], the rate of nodule re-absorption is not known. All these factors, therefore, make the use of palpable nodule prevalence and burden less suitable to assess the effectiveness of doxycycline in an area of ongoing transmission and within the investigated timeframe from distribution.

Our results should encourage the introduction of community-directed distribution of doxycycline and other anti-wolbachial drugs and regimes in onchocerciasis control programmes, such as in restricted populations with high risk of SAEs to ivermectin in *L. loa* co-endemic areas, in populations with evidence of sub-optimal responsiveness to ivermectin and as an endgame tool to meet the goal of elimination (as planned for the North-East focus of onchocerciasis in Venezuela as part of the Onchocerciasis Elimination Programme for the Americas [OEPA]). Moreover, as doxycycline is the first macrofilaricidal drug available for onchocerciasis, knowledge of its long-term impact is of particular importance to address the practical aspects of implementation of macrofilaricides within existing control programmes for onchocerciasis.

#### Abbreviations

MDA: Mass drug administration; Mf: Microfilariae; SAEs: Severe adverse events

#### Acknowledgements

The study was funded as part of the A·WOL consortium through a grant awarded to the Liverpool School of Tropical Medicine by the Bill and Melinda Gates Foundation.

#### Author details

<sup>1</sup>Molecular and Biochemical Parasitology, Liverpool School of Tropical Medicine, Pembroke Place, Liverpool L3 5QA, UK. <sup>2</sup>Department of Microbiology and Parasitology, University of Buea, P.O. Box 63, Buea, Cameroon. <sup>3</sup>Research Foundation for Tropical Diseases and Environment, P. O. Box 474, Buea, Cameroon. <sup>4</sup>Tropical Medicine Research Station, P.O. Box 55, Kumba, Cameroon. <sup>5</sup>Clinical Group, Liverpool School of Tropical Medicine, Pembroke Place, Liverpool L3 5QA, UK.

#### Authors' contributions

FT designed the study, participated in the field activity, analysed and interpreted the results and wrote the manuscript. NT participated in the field activity organization and data collection. PAE participated in the field activity organization and body palpation. ME participated in the field activity organization and data collection. BF participated in the study design and statistical analysis of data. SWJ participated in the study design, organized the field activity and participated in the interpretation of the data and manuscript editing. MJT conceived and designed the study, interpreted the results and wrote the manuscript. All authors agreed with the final edition of the manuscript.

#### Competing interests

The authors declare that they have no competing interests.

Received: 28 January 2012 Accepted: 20 March 2012

Published: 20 March 2012

#### References

- Basanez MG, Pion SD, Churcher TS, Breitling LP, Little MP, Boussinesq M: River blindness: a success story under threat? *PLoS Med* 2006, **3**(9):e371.
- Taylor MJ, Hoerauf A, Bockarie M: Lymphatic filariasis and onchocerciasis. *Lancet* 2010, **376**(9747):1175-1185.
- Basanez MG, Pion SD, Boakes E, Filipe JA, Churcher TS, Boussinesq M: Effect of single-dose ivermectin on *Onchocerca volvulus*: a systematic review and meta-analysis. *Lancet Infect Dis* 2008, **8**(5):310-322.
- Gardon J, Boussinesq M, Kamgno J, Gardon-Wendel N, Demanga N, Duke BO: Effects of standard and high doses of ivermectin on adult worms of *Onchocerca volvulus*: a randomised controlled trial. *Lancet* 2002, **360**(9328):203-210.
- Diawara L, Traore MO, Badji A, Bissan Y, Dombia K, Goita SF, Konate L, Mounkoro K, Sarr MD, Seck AF, *et al*: Feasibility of onchocerciasis elimination with ivermectin treatment in endemic foci in Africa: first evidence from studies in Mali and Senegal. *PLoS NTD* 2009, **3**(7):e497.

6. Chippaux JP, Boussinesq M, Gardon J, Gardon-Wendel N, Ernoult JC: **Severe adverse reaction risks during mass treatment with ivermectin in loiasis-endemic areas.** *Parasitol Today* 1996, **12**(11):448-450.
7. Gardon J, Gardon-Wendel N, Demanga N, Kamgno J, Chippaux JP, Boussinesq M: **Serious reactions after mass treatment of onchocerciasis with ivermectin in an area endemic for Loa loa infection.** *Lancet* 1997, **350**(9070):18-22.
8. Hoerauf A, Specht S, Buttner M, Pfarr K, Mand S, Fimmers R, Marfo-Debrekeyei Y, Konadu P, Debrah AY, Bandi C, *et al*: **Wolbachia endobacteria depletion by doxycycline as antifilarial therapy has macrofilaricidal activity in onchocerciasis: a randomized placebo-controlled study.** *Medical Microbiol Immunol* 2008, **197**(3):295-311.
9. Hoerauf A, Specht S, Marfo-Debrekeyei Y, Buttner M, Debrah AY, Mand S, Batsa L, Brattig N, Konadu P, Bandi C, *et al*: **Efficacy of 5-week doxycycline treatment on adult Onchocerca volvulus.** *Parasitol Res* 2009, **104**(2):437-447.
10. Turner JD, Tendongfor N, Esum M, Johnston KL, Langley RS, Ford L, Faragher B, Specht S, Mand S, Hoerauf A, *et al*: **Macrofilaricidal activity after doxycycline only treatment of Onchocerca volvulus in an area of Loa loa co-endemicity: a randomized controlled trial.** *PLoS NTD* 2010, **4**(4):e660.
11. Bourguinat C, Pion SD, Kamgno J, Gardon J, Duke BO, Boussinesq M, Prichard RK: **Genetic selection of low fertile Onchocerca volvulus by ivermectin treatment.** *PLoS NTD* 2007, **1**(1):e72.
12. Churcher TS, Pion SD, Osei-Atweneboana MY, Prichard RK, Awadzi K, Boussinesq M, Collins RC, Whitworth JA, Basanez MG: **Identifying sub-optimal responses to ivermectin in the treatment of River Blindness.** *Proc Natl Acad Sci USA* 2009, **106**(39):16716-16721.
13. Osei-Atweneboana MY, Eng JK, Boakye DA, Gyapong JO, Prichard RK: **Prevalence and intensity of Onchocerca volvulus infection and efficacy of ivermectin in endemic communities in Ghana: a two-phase epidemiological study.** *Lancet* 2007, **369**(9578):2021-2029.
14. Tamarozzi F, Halliday A, Gentil K, Hoerauf A, Pearlman E, Taylor MJ: **Onchocerciasis: the role of Wolbachia bacterial endosymbionts in parasite biology, disease pathogenesis, and treatment.** *Clin Microbiol Rev* 2011, **24**(3):459-468.
15. Alley WS, van Oortmarssen GJ, Boatman BA, Nagelkerke NJ, Plaisier AP, Remme JH, Lazdins J, Borsboom GJ, Habbema JD: **Macrofilaricides and onchocerciasis control, mathematical modelling of the prospects for elimination.** *BMC Publ Health* 2001, **1**:12.
16. Wanji S, Tendongfor N, Nji T, Esum M, Che JN, Nkwescheu A, Alassa F, Kamnang G, Enyong PA, Taylor MJ, *et al*: **Community-directed delivery of doxycycline for the treatment of onchocerciasis in areas of co-endemicity with loiasis in Cameroon.** *Parasit Vectors* 2009, **2**(1):39.
17. Wanji S, Tendongfor N, Esum M, Yundze SS, Taylor MJ, Enyong P: **Combined Utilisation of Rapid Assessment Procedures for Loiasis (RAPLOA) and Onchocerciasis (REA) in Rain forest Villages of Cameroon.** *Filaria J* 2005, **4**(1):2.
18. **A-WOL - Anti-Wolbachia Consortium.** [<http://www.a-wol.net/>].
19. Specht S, Hoerauf A, Adjei O, Debrah A, Buttner DW: **Newly acquired Onchocerca volvulus filariae after doxycycline treatment.** *Parasitol Res* 2009, **106**(1):23-31.

doi:10.1186/1756-3305-5-53

**Cite this article as:** Tamarozzi *et al.*: Long term impact of large scale community-directed delivery of doxycycline for the treatment of onchocerciasis. *Parasites & Vectors* 2012 **5**:53.

**Submit your next manuscript to BioMed Central and take full advantage of:**

- Convenient online submission
- Thorough peer review
- No space constraints or color figure charges
- Immediate publication on acceptance
- Inclusion in PubMed, CAS, Scopus and Google Scholar
- Research which is freely available for redistribution

Submit your manuscript at  
[www.biomedcentral.com/submit](http://www.biomedcentral.com/submit)

